

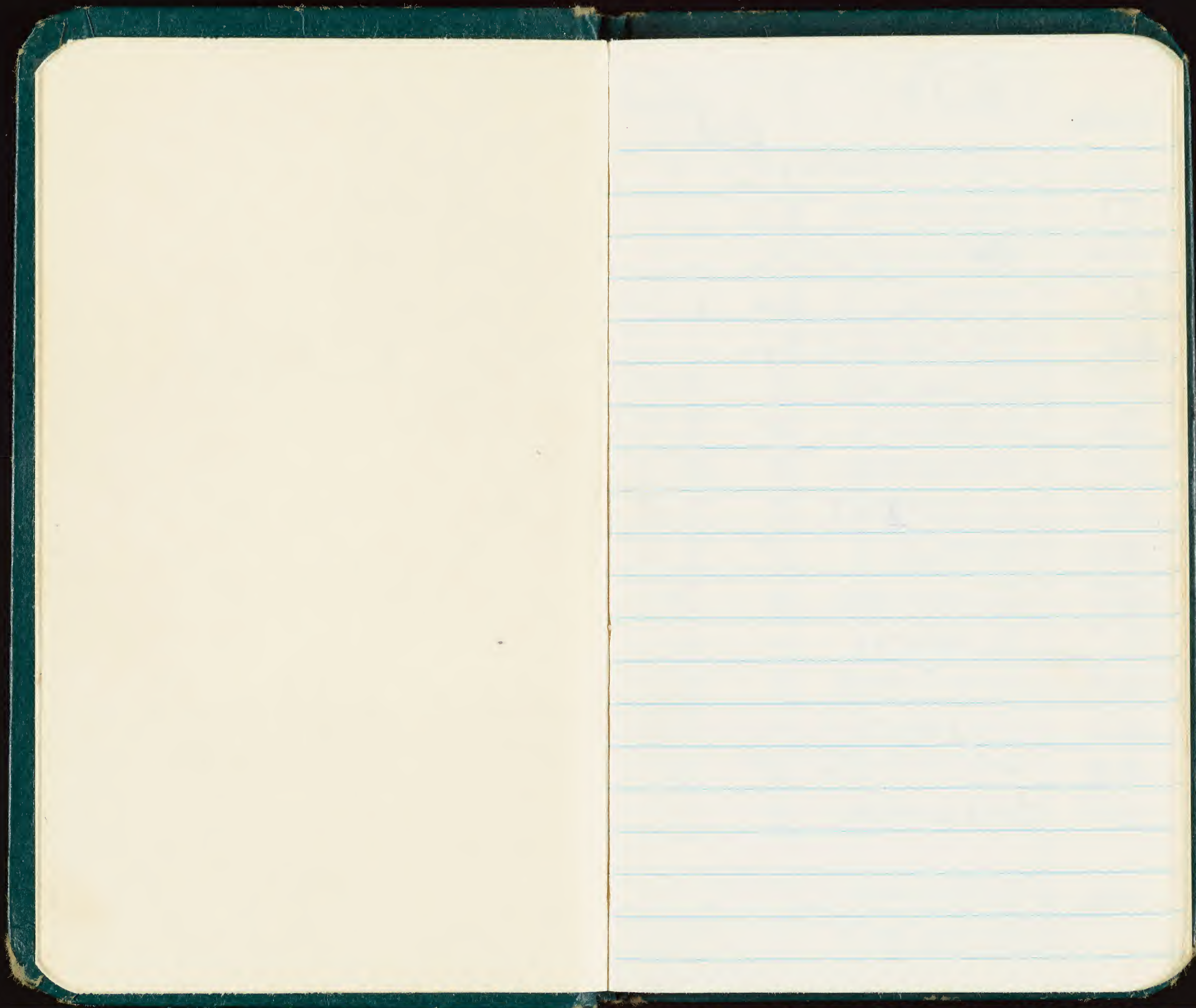
Memoranda

GSA - U. S. GOV'T

22

Kun

November 1968



Nest #	Band #	B. H.	Cubs	
			Surv.	...
50	59784063	♀ ^p 2	1	
51	59784056	♀ ^u e 1	1	
52	59784056 73745501	♀ ^u e 3	2	
53	73792619	♀ ^u e 1	1	
54	73745550	♀ ^u e 1	1	
55	69722956	♀ 3	2	
56	69790039	♂ 3	3	
57	73796946	♀ 2	1	
58	59784143	♀ 3	2	
59	73794809	♂ 3	2	
60	69790046	♀ 3	2	
61	73745271	- 2	1	
62	73745708	♀ 4	3	
63	59784171	- 3	2	
64	69722975	♂ 3	2	
65	69722920	♀ 2	1	
46	{ 58763242 L 76746703		2	1

Dub - North, 21 Nov

66	597-84174	3	1
67	737-45347	3	1
68	697-90161	4	3
69	5697-90168	3	2
70	737-45633	1	1
71	697-90157	3	2
72	737-45623	2	1
73	737-45631	2	1
73	737-45151	5	3
74	737-45625	3	2
75	737-45609	3	2
76	737-92423	3	2
77	697-84186	4	3
78	697-22908	3	2
79	667-35392	2	1
80	737-45531	4	3
81	737-43272	2	1
82	697-22905	2	2
83	697-22903	3	2

A 19 + 2

#	BAND No	SEX	COLOR
1	69724567	♀	
2	73791291	♂	
3	7675179/NB	♀	Smaller
	69790723	♂	Larger
<hr/>			
4	66739772	—	
<hr/>			
22	MOV 6 ♀	Dock - Sou. Pt.	
5	73791342		

21 NOV - N side of Runway

21 Nov

Nth pt. → S. (on E. side)

84	737-90165	1
85	597-84195	3
86	737-45610	3
87	697-90142	3
88	737-45729	1
89	737-45602	-
90	667 35081	3
91	667 39778	3

1	
2	Blue plastic band on ^{right} leg.
3	
2	
1	
	Deep in Bush
2	- Near Wild Sock on E side
1	

22 Nov 0/30 - 11 BIP
✓ Study Area 2

22 Nov

Number	Panel #	Coal batches	top
92	73747229	3	2
93	69722911	3	1
94	69790001	3	2
95	73794583	4	3
50	73745258	4	3
96	73747291	2	1
97	73745523	4	3
98	59784115	2	1
99	69790007	3	1
100	59784120	3	2
101	69790106	3	2
51	59784155	4	3
102	73745567	1	1
103	69790024	3	2
104	69722952	3	1
105	73790153	3	2
106	66739054	2	1
107	69790021	3	3
108	73793047	1	1

NEST NO.	BAND NO.	COLOR		
		Bottom	Top	
109	737 45 539	3	2	
110	737 45 745	5	3	Egg Broken
53	597 83 207	2	4	
111	737 93 770	1	1	
112	737 90 947	1	1	
113	597 84 135	1	1	
114	697 - 22 953	3	2	- on 2 eggs & dry lining
115	737 - 45 520	1	1	
116	737 45 144	3	2	Exposed.
117	737 94 576	2	1	♀ Egg - laid 22 Nov
254	Abandoned			
55	737 - 45 546	5	3	
15	697 - 22 - 955	3	3	
57	737 - 93 760	3	3	
118	737 95 818	5	3	
119	737 45 273	3	2	
120	737 45 587	3	2	
121	737 45 261	3	2	
122	697 900 37	2	1	

123	697 90119	3	2
124	597 84079	2	1
125	737 91339	2	1
126	597 84124	3	3
127	697-31793NB	2	1
128	737-45751	3	2
127 ⁴⁴	697-90122	3	2
129	737-99726	3	1
43	737-4524F	4	3
130	597-f4092	2	1
131	737-91691	1	1
132	737 45149	4	3
133	737 45210	3	1
134	69790126	3	2
135	737945F7	1	1

24 Nov

LA

6	757-92101	-	Dwt. red	at behind	✓
7.	767-51794	-	SA 2	-	Laid 24 Nov ♀ ✓
8	737 47407	-	SA 2	-	♀ 22-23 Nov ✓
9	737 46009	-	SA 2	-	♀ large nest ✓
10	697 90542	-	SA 2	-	♀ ✓
11	737 46091	-	SA-RLB-	-	♀ - 22-23 Nov ✓
12	697 90613	-	SAF	-	♀ - 22-23 ✓
13	737 46083	-	SAF	?	✓
14	667 337276		SAF	?	✓
15	737 46051		SAF	♀ -	22-23 ✓
16	737 93810		SAF	♀ Egg	this late ✓
17-667	35436		SAF	♀	22-23 ✓
18	737 47008		SAF	♀	22-23 ✓
19	737 45660		NAF	—	✓
20	737 90325		NAF	♀	- 22 ✓
21	737 91854		NAF	♀	+ 22 ✓
22	737 91856		NAF	♀	21 ✓
23	737 90677		NAF	♀	22-23 ✓
24-837	90213		NAF	♀	22-23 ✓
25	697 90291		NAF	♀	23 ✓

24 Nov

26 697 90285 - ♀ - 23 - 24

27 737-98021 ♀ - 23 - E Side of NAT

28 737 91666 ♀ 22-23

29 737 96048 ♀ 22-23

North Road

24 Nov - 1730 hrs

Chords 100% - w/d 8-12 @ 070

BF - 41 a Gr.

2 in air

15 imm RFB

164 Ad RFB

1940 56 HF

204 RFB + 7 in air

LA - 11 Dec
S. Ant

198

325

199

197

111 Abandoned

128

200

201

202

203

204

205

206

207 - 282 283

North part field

284 - 225

11 Dec

Berkeley
Point

1740

- 100 ft B

1745

1250 (up)

1755

171

~~230~~
22

How Noddis

BFA

Blod12 Dec

1	737	98553	1-1
2	737	924/13	1-1 D
3	737	90803	(2-3)-1
4	737	45526	4-3 β E β SR
5	737	90604	3-1 (SB)
6	737	90822	3-1
7	737	91288	2-1
8	587	-857 45*	2-1
9		46*	3-1
10	737	90162	1-1
11		47*	1-1
12		48*	1-1
13	737	-45618	2-1
14		49*	1-1
15	587	-27271	1-1
16	737	-92410	3-2
17	627	90043	2-1
18	737	92628	1-1
19		50*	1-1

20		51*	3-2
21	737	95812	4-2
22	737	-77463	1-1
23		52	1-1
24		53	1-1
25			

New Books
21 Dec

855

L.A. Sun

15 Dec

BFA

Nest		
48	109.0	68.0
	107.2	66.1
30	112.8	70.5
	114.2	65.9
	106.0	65.5
80	110.5	68.1
	110.0	66.0
79	107.0	69.4
76	107.6	69.5
75	104.3	72.6
74	109.1	69.4
-	106.8	66.7
93	111.3	71.3
-	105.9	68.7
-	106.5	65.2
-	103.7	69.9
20	103.3	67.1

27	104.6	71.3
66	107.3	71.1
194	108.7	75.2
12-22	114.1	72.1
192	110.7	72.8
=	107.7	70.6
	108.2	67.1
191	103.2	68.0
69	110.2	71.6
70	110.2	73.3
23	104.6	69.4
189	111.6	71.6
188	103.2	70.6
71	108.6	72.5
186	110.5	70.6
74	106.3	73.4
-	115.6	68.0
73	111.1	72.8
185	106.8	68.9

LA

Blue on Rt Leg
667-35020

BFA

-	110.4	72.1
-	108.4	67.8
-	107.3	68.5
-	115.8	63.4
	112.2	65.4

8	104.6	69.7
95	104.2	69.4
184	109.3	73.0
183	105.5	70.0
26	105.0	70.5
7	102.8	72.1
182	106.3	67.2
97	104.1	71.1
181	111.2	71.3
#6	responder	egg
	104.0	71.6

BFA

	105.8	70.9
	110.1	70.8
	109.2	66.6
#116	116.2	68.7
175	116.5	68.9
49	108.2	73.3 ✓
176	109.4	71.4
81	107.8	71.4
197	105.3	70.9
82	110.2	71.8

5	109.8	69.2
-	100.8	65.9
	105.9	65.9
180	responder	
	108.2	68.5
	114.2	67.7
177	108.7	72.9

LA B Side No. 112

109.3 67.3
114.2 66.5

(24)

88	112.0	68.8
165	105.1	72.5
164	104.3	66.9
25	107.2	71.0
26	111.3	72.3
167	106.4	71.5
—	114.5	69.5
162	109.5	71.7

BFA

15 Dec.

Pt.

—	107.9	69.8
—	106.4	70.0
24	112.0	70.8
—	120.0	65.7
—	107.1	72.3
83	108.3	70.1

2 Sunday Spot

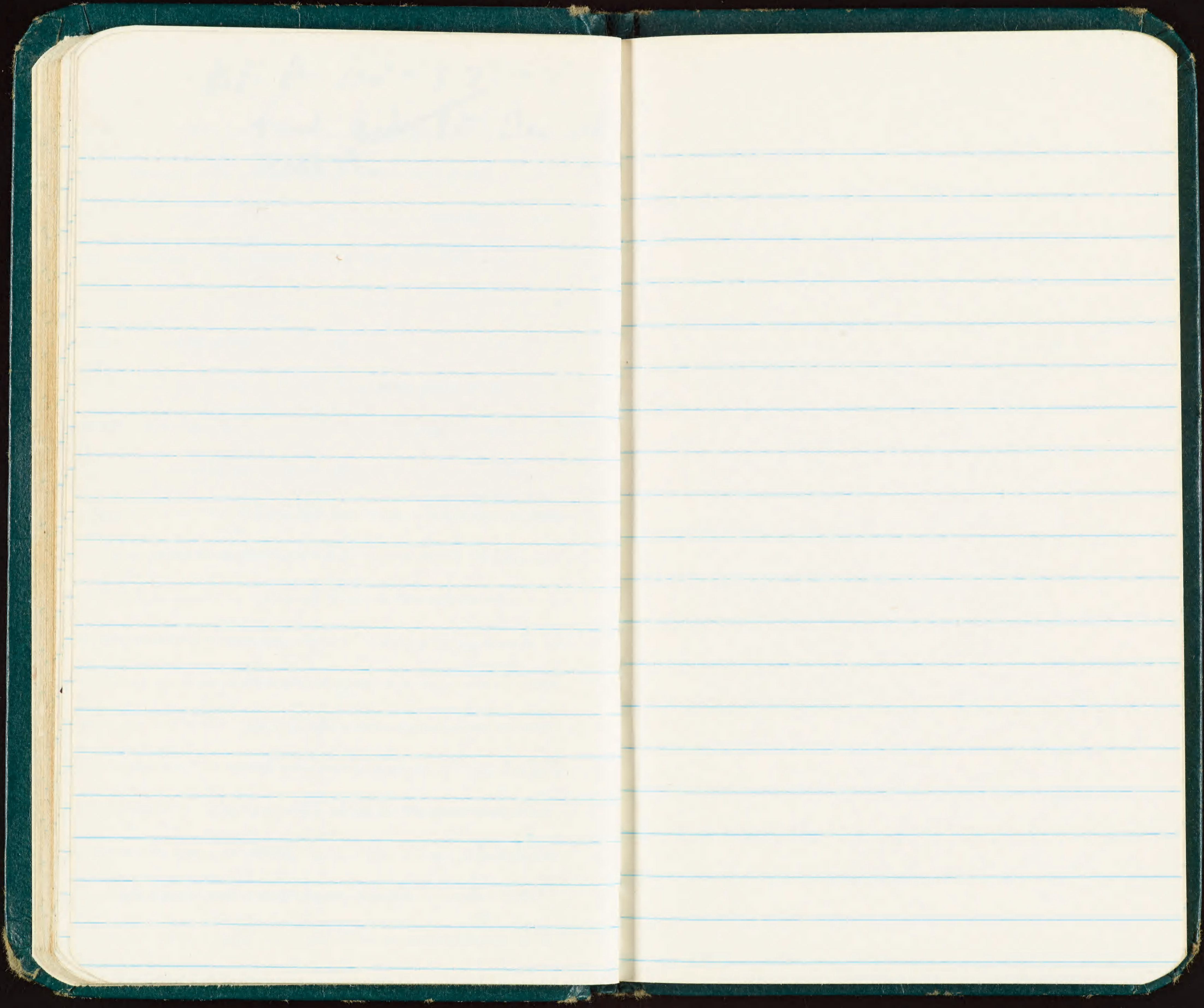
123	109.8	71.2
172	104.8	72.6
84	104.5	71.5
85	Not done	
—	114.8	70.9
—	110.6	74.2
—	114.3	69.1
—	109.7	73.5
86	106.5	70.3
—	109.9	71.4
168	106.8	70.3
167	108.9	70.2
—	110.5	70.8

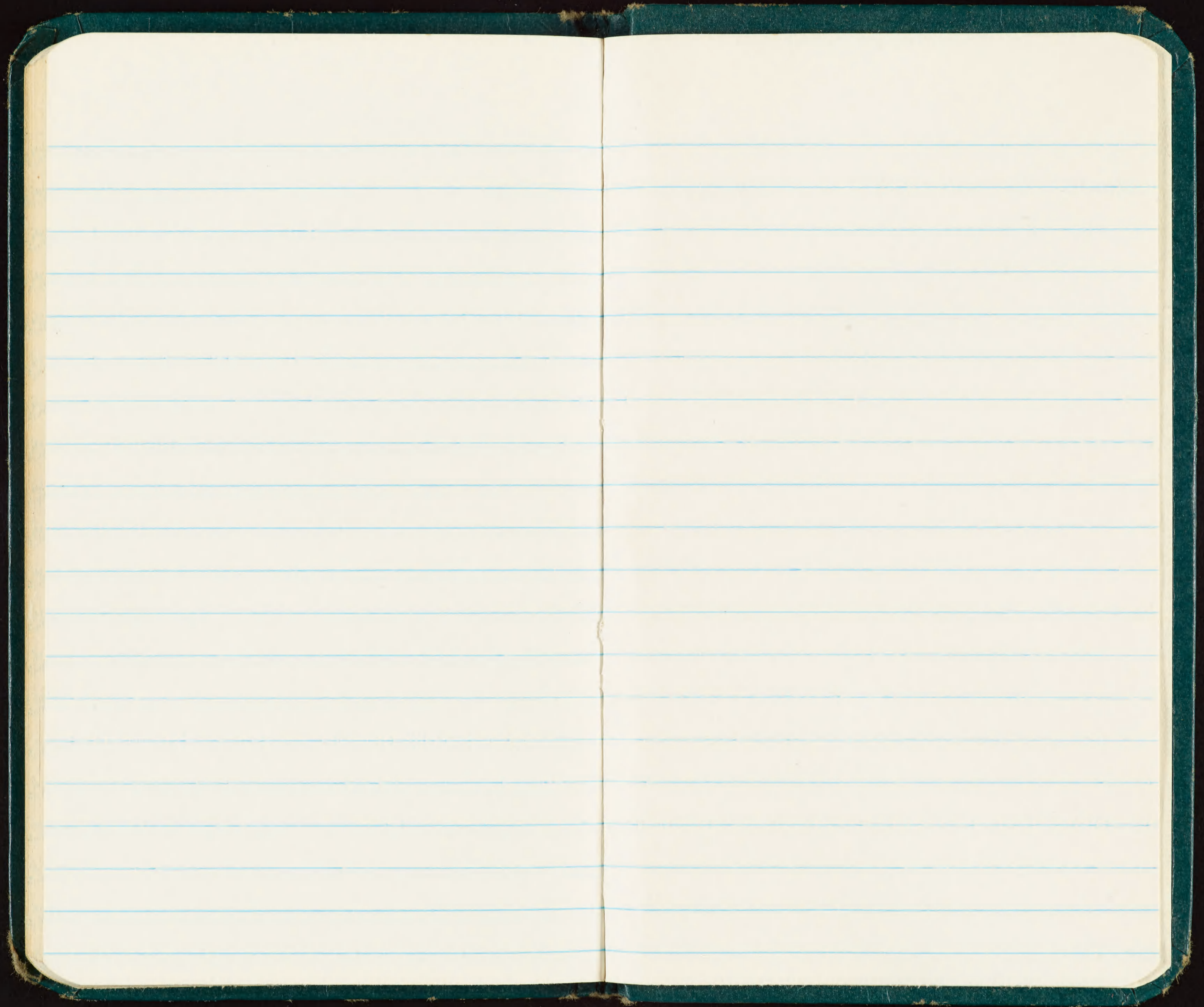
(1)

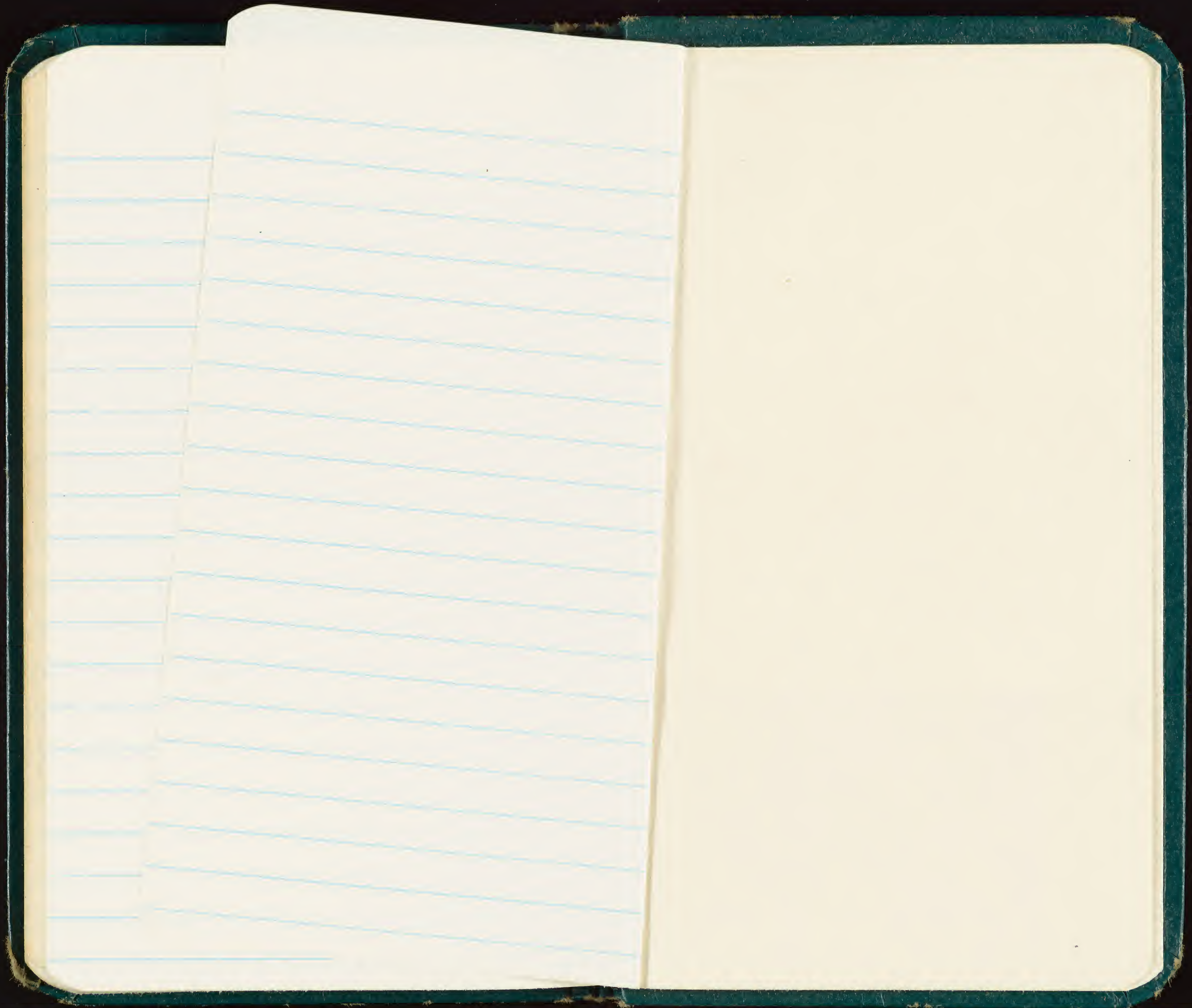
BFA 737-97554

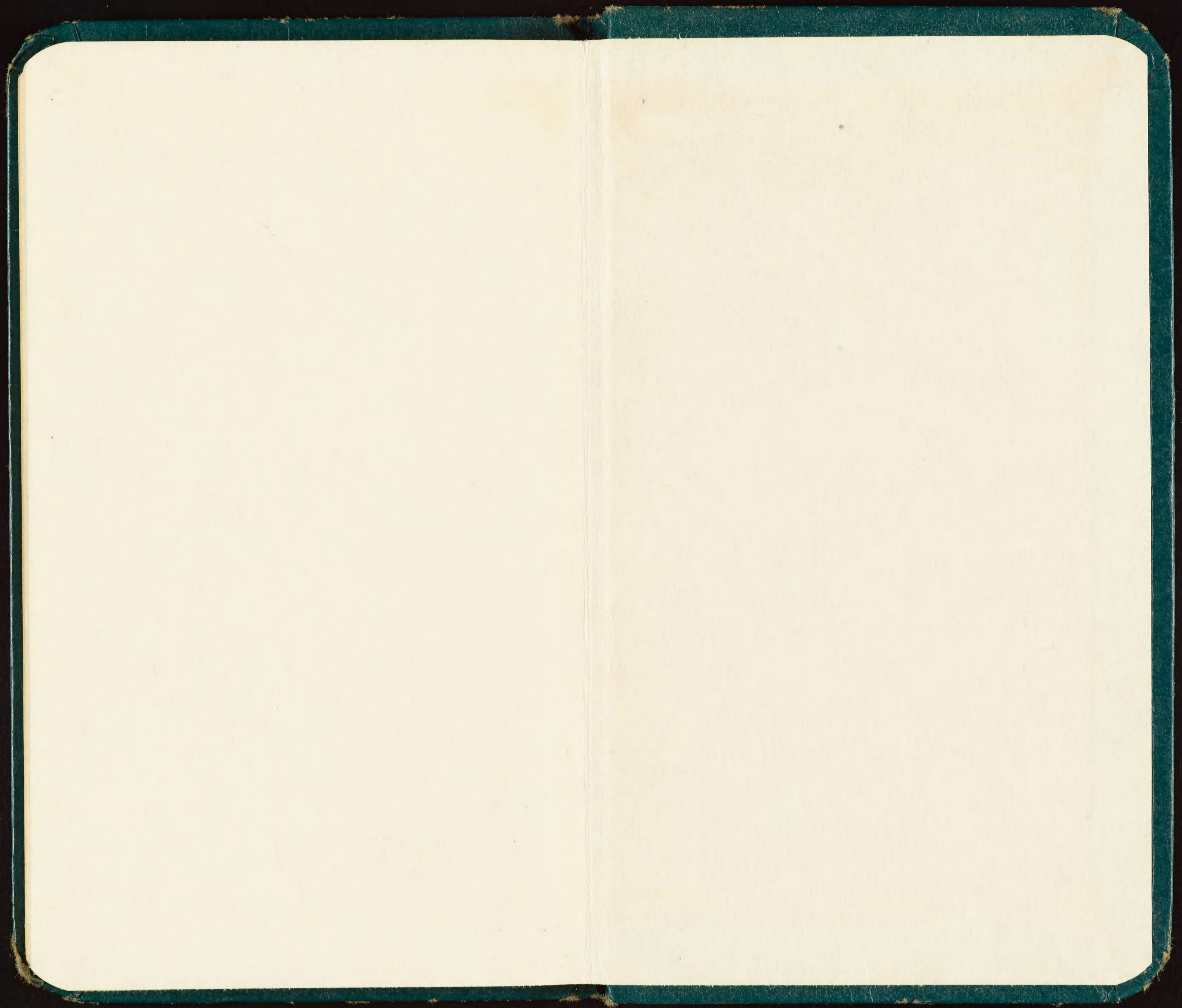
found ~~seed~~ 15 Dec '68

North Pt.









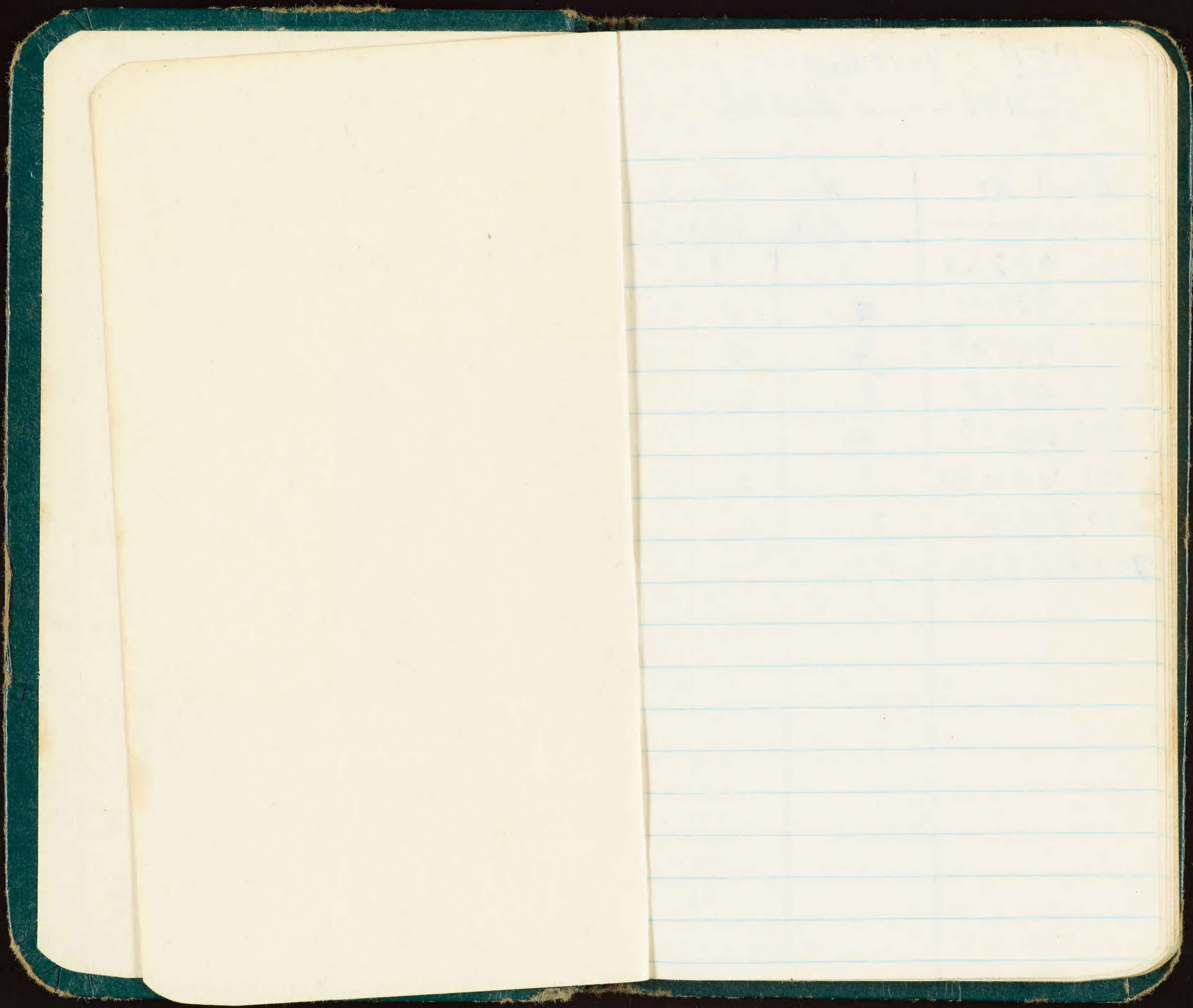
7530-222-0078

FEDERAL SUPPLY SERVICE

Memoranda

Kure Atoll
November 1968

R. L. DeLong



BFA 9-10 Nov

South Pt. - around West Side.

Band No	Rings color	
	Bottom	top
737- 95820	3	1
93904	3	1
94568	3	2
697 90168	3	2
597 84179	2	1
137 45625	3	2
597 84185	3	2
737 45630	3	2

13 Nov

14 00 - 15 30 hrs

visited 4 computer BFA

3 C. Lyson &

Nov 9-10 - 2 Lays Albatross
0130 hrs - moon - 2/3 up - w S @ 20 km
BFB - South Ant field 80%

26 - P 36
27 - P 37
31 - P 41
34 - J 53
28 - P 48
24 - P 35
25 P 49
22 P 46 w / 1 other (P) third floor
23 P 52 w / 2nd

8 Ad field

BB. 00 w / Ad. ✓
NW 17 P
NW 18 P
B# 19 P ✓ B# 18
NW - 29 June w / 2 Ad

North Ant field
9-10 Nov @ 145 hrs
2 Lays L Pll

12 P, 19 P, 20 P, 17 P, 21 P
5-1036 - June
19 - 38 - June
8 037 - P
31 041 - June
14 16 P.

27 32 P, 24 P (w 25)
30 34 P ✓
29 31 June / Ad., 1109 P ✓
12 23 P ✓ 35 P ✓
31 28 June w 41 w 20y
BB. 11/29 - June
20 20 P
10 13 P
NN 43 mdy w Ad. ✓
" 32 June - w ✓

14 Nov
1220

L.A.

Duck to So Pt

|||||

1 [47] (30)

11 Total 38

~~36 (1/2)~~

Sopt

1 Down

Down S. East Side to West Side

|||||

West Side to North Pt.

NP to Duck

|||||

BREP -

~~|||||~~
|||||

|||||

|||||

Sopt

|||||

Down S. East

|||||

11

West Side to North Pt.

|||||

NP to Duck

||||| 1 W/E

65
36
101 Total

36 - 1/2 + ?

Point

to West Side

14 Nov

LA - Rte to Side of Runway

16, 3, 11,

E. Side of Runway

6, 5, 11, 1, 5, 10, 5, 1

W End of Runway

2, 6, 4, 2 (9 BFA)

So. Dr & field.

26

No Am Field

24

SA-21 - 471 | Peak year 2

24 Nov

Wind 310 to 20-24kts.

1758 Sun Down.

1750 Multitargets ✓

125 on ground + 10 in air ✓

RFB - 12 in air - 10000 ft.

Count due to wind

87 Ad.

Laysan Albatross

15 November 2100 hrs

Pock So.

||||| ||| ||| ||| |||

to Hotel Bellman

||||| ||| ||| ||| ||| |||

Sr Pt

Sr Pt. 3, 8

West Side North

10, ||| ||| ||| ||| ||| |||

West Side North

||||| |||

North Pt Snow west Side

||||| ||| |||

B.F.

~~Laysan~~ Albatross

15 November

||||| ||| ||| ||| ||| ||| ~~|||||~~

● To Hotel Bellman

||||| ||| ||| ||| ||| ||| ||| |||

10/e |||, 20, 11, 35, 8, 20

78 (2 w eggs - one worn)

89

35

20

78

222

Sr Pt.

Sr Pt: 9, 7, 6

West Side North

||||| ||| |||

West Side North

||||| ||| ||| ||| |||

North Pt East Side

North Pt Snow west Side

||||| ||| ||| ||| |||

16 November

BFA Nests & Eggs.
Band # 5

5 - laid 16 Nov.

B. # 767-51790*

737-93978

6

737-90154

737-94594

~~# 6~~

~~73-90154~~

7

737-90849

↑ Nest 1
[8]

8

at [6]

1 Band egg - almost hatched
at [6] egg

597-84184

737-90604

2

Egg laid
14 Nov

737 45526

Colors
Boston

top

1

1

✓

2

1

✓

3

- 2

2

- 2

3

2

✓

4

3

✓

2

1

3

3

✓

Dark to Order Reflective
change

#3 8/13 9/16 Nov

597-84002

9
Lind
16 Nov

737-45530

697 90004

10 "

597 84112 w/ Blue
photo
Lid

11 Lind 16 Nov 597 84128

at Order Ref. 697 90104

12 ^{closed}
Lind 15 597 84077

13 L-15th 597 84140

697 90042

14 L-15th 737-45145

732 97673

15 L-15th Brand no. 59784150

behind first Grocery Warehouse So. 10th

Bottom

Top

4

3

✓

3

2

✓

3

2

3

1

4

3

3

2

✓

3

1

3

2

✓

1

1

3

2

✓

See next
Su Pt. page
1 Lind 14 Nov

Docum - Sw Side
4 pt.
4 Lind 5 Nov 73745237

+ 2 more Lind on 16th

Runway
West Side

LA- 17-21-30, 22, 15

East Side

LA 15-9-19-4-26

47
26
23

Lind - Cr 20-25 Km
180°
clouds 50%
16th 1746

19 Frig in Central Area

55 Ad. RFB

Small Imm RFB

1756

20 Frig ✓

64 RFB

1758 Sun Set Area

Small Imm plus

79 RFB Ad 1759

16th Nov

Pine fuel - around branches

at 1300 & 1600 hrs

17 Nov / 300 hr.
Small Pt - Northwind

	Bed No	Class	tops	
		Bottom		
16 - Egg land	16 th - 69790162	3	2	✓
17	" " 16 th - 73745578	3	3	✓
1	" " 14 th - 73794593	2-3	1	✓
18	" " 17 th - 59752962	4	2	✓
19	" " 17 th 73793020	4	2	✓
	" " 17 th 73793007	3	1	✓
20	" " 17 th 69722957	2	1	✓
	" " 17 th 59784139	3	2	✓
21	" " 17 th 73745703	2	1	✓
	" " 17 th 66739094	3	2	✓
22	" " 17 th 73745225	2	1	
23	" " 17 th 69790167	5	3	
24	" " 17 th 69790147	3	2	
	" " 17 th 597284193	1	1	
25	16 th or 17 th 66735087	3	2	
26	on East side - just north of Cassin " " 17 th 73793717	1	1	
	" " 17 th 73797721	2	1	
27	" " 17 th 69722917	2	2	

	egg	land	Bird No.	Bottom	Top	
28	16-17 th		69790060	2	1	
29	16-17 th		69790064	3	2	
30	16-17		76751292NB	3	1	
31	16-17		737-91007	3	1	
So of Wind Sock on first large bank of canal in water						
32	17		737 45594	-	-	
33	17 th		697 90130	4-5	3	
34	17 th		667 35077	3	2	
35	17 th		737 94773	3	2	
36	16-17		697 22973 ♀ me	3+	2	
			737 45591 ♂	3	2	
37	16-17		697 22976	3+	2	in land
38	16-17		597 84169	3+	2	
39	16		737 45236 ♀ me	3+	2	So of Wind Sock
40	18 th		737 91622 ♀ y/e	2	1	So pt
41	18 th		737 92425	2	1	beside #41
42	18 th		597 84099	3+	2	
43	18 th		597 84076	3-	2	

18 - No Steamer -

737 90957 - 3+2

Color

Bottom

top

44 18th 597 84083 ♂ 4/2

3

2

45 18th 697 22961 ♀

3

2

697 22962 ♂

4

3

15

737 47143

2

1

46

767-46702 R³

597 52833 L³

47

737-45747

3

1

697 90033 ♀ 4/2

3

+

48

737 45718

2

45759 ♀ w/e

2

1

49

697 90015 940

47

2

LA So Book Field

Number of full

17 + 10

24

16 LA in SA-2

+ 5

21

BE Petrol

~~19th - 20th~~
2430 hrs.

SA-2

LA

27 WOU

Back to
Docks

- 30 73791801 - By Buoy
- 31 73793872 } Raft to Dock
- 32 66735443 }
- 33 73747297 } IN LAND
- 34 NO TAG } Fm Beer Bott
- 35 73791391 200' Left of RAD Tower
- 36 70790351 "
- 37 ~~73747289~~ 150' "
- 38 73794863 "
- 39 73792750 FRONT of "
- 40 66735456 "
- 41 70791386 "
- 42 73747305 under "
- 43 73745848 "
- 44 73791383 "
- 45 73794854 30' RT. ^{Radar} Tower
- 46 69790351 "
- 47 69722006 "

BFA 27 Nov
 27 Nov

136	737-93718	2-1
137	597 26170	3-2
138	7379 1374	3-2
139	73745529	4-3
140	73794600	3-2
141	73793903	2-1
142	59784106	3-3
143	59784031	3-2
144	59784110	3-2
145	73794559	2-1
146	6979 148	1-1

22 Dec

BF 28 Nov

767	51553	108.0	66-113.0
	54	118.0	67-120.0
	55	104.5	68-125.0
	56	117.0	69-100.0
	57	105.0	70-116.0
	58	107.5	71-108.0
	59	121.0	72 Natural
	60	104.0	
	61	112.0	
	62	117.5	
	63	103.5	
	64	121.6	
	65	103.0	dry.

REB

17-5 Nov

18 -

19 -

20 -

21 -

22 -

CL 21 Dec

LA 29 Nov

48 767 45354 - behind board

49 737 92150 - beyond Peter's Reflection

50 737 93189 1.

51 737 45859

52 737 94843

53 737 93511

54 767 - 51796 *

~~60~~ 767 - 51797 *

55 737 - 94836

56 697 90438

57 - 767 - 51798 *

58 - 737 90989

59 - 737 51799 *

61 737 92791

62 737 96434

63 697 22252

64 737 93254 ♀ e 29

65 737 47121

~~66~~ 737 47118

67 - 737 47120

68 - 737 94675

BFD 29 November

147 597-84054 3-2

148 737 45721 4-4

149 597 84064 4-3

150 767 51795* 1-1

151 697 90019 3-2 Egg 29

152 737 45141 3-2

153 - No #s

154 737-32247 3-1

155 737 94851 3-2

102 - 2 egg adults off nest - N. S. Steward

156 737-92612 - 1-1

157 697 90066 - 3-2

158 697 90025 - 3-2

159 737 92630 3-2

160 737 92618 - 2-1

L A 1 Dec

Wind Creek - Forest Hills - Wash

69) 697 90831 - ♀

70) 737 96012 - White land bird

71 737 94360 -

72 737 90455

73 737 94220 included - by author

74 737 47242

75 737 92727

76 697 22771

77 697 22776

78 697 90937

79 737 91181

80 737 - 47209

Dark South

88 737 94861

81 697 90326

82 697 90327

40) 737 45839 - change

43) 737 45649

Radon Ref.

LA

44) 697-22005 ch

84 667 35459

83) 697 90343

85) 737 93456 ♀ e/1 Dec

86 737 91376

87) 697 90344

89) 697 90347

47) 667 35462 ch

Billham

90 737 96133

E 30 year

91 697 90367

E 2930 year

92 737 97653

E 29-30 year

93 737 96419 E 29-30

94 737 94180 ♀ E 29-30

100 737- 47117 ♀ E-21-30

95 737 45562 E 29-30

96 737 94829 E 29-1

BFA

Number

27 Abandoned

(61) 697 90150 - 2-1

162 737 45139 - 3-1

163 - no Band - 3-2

164 737 90152 - 4-3

(65) 737 45728 - 3-1

166 737 45732 3-2

167) 737 93701 - 3-2 2 years

168) 737 45736 3-2

169) 697 22910 3-2

170 - no Band 1-1

171 no band 1-1

172 ~~697~~ - 22913 2-2

173 737 90155 3-2

174 no Band 3-1 N.P.T.

175 737 97554 4-2

176 697 22914 3-2

177 737 91016 3-2

178 737 91692 3-1

1 Dec 22 Dec

179) 737 45734 - 4-3
 W of 180 ^{side road} 597 84100 3-2
 181 737 45150 3-2
 77 737 45624 - 3-2 ^{2 eggs}
 7 737 - 96948 - 3-2
 182 - no bird 1-1
 183 737 47251 4-3
 184 737 45261 4-4
 8 737 90114 - Dec
 185 737 45723 - 4-3
 74 697 22901 - w/ BS bird
 73 697 90158 w/ BS bird
 186 597 84185 3-2
 2-187 737 45526 3-2 ^{Dec 22?}
 110 72 697 90157
 188 597 84179 3-2
 189 737 97727 - 1-1
 23 597 84177 - 3-2

✓ 22 Dec, Dec

190 737 95820 3-2
 191 737 93730 3-2
 192 737 94568 3-2
 193 737 47211 3-2
 67 737 47210 3-2
 194 597 84032 4-3
 Park Sub (South)
 92 597 84178 4-3
 136 767 51783 -
 795) 737 93055 3-1 ^{2/29-30}
 10) 737 45240 - 4-3 ♀
 96) 597 84113 3-2
 196) 767 - 51800* 1-1 ♀ ³⁰⁻¹
 197 697 - 90006 3-1 ²⁸⁻³⁰
 97) 597 84175 3-2
 98) 737 45525 3-2

begin

Dec

198) 587-85681^{*} Y 28-30

100 767 ~~948~~ 51784? Green St!

150 587-85682^{*}

3 697 90020 chugan ♀

153 737 94566 ch. ♀

155 737 93753 ch

52 737 45252 ch

199 737 90996 3-2

200) 737 45549 3-2

201 737 35298 3-2 ♀ E 29-30

202 737 93794 - ♀ 3-2 E 29-30

110 47 Egg Baked no Bury ←

203 697 - 90115 ♀ 1-1 2e 29-30

204 737 45508 ♀ 3-2 e 29-30

205 697 90116 3-2 e 29-30

206 587-90020 3-2 e 29-30

1 Dec

207) 667 39023 e 28-30

208 737 93006 C "

209 737 92660 C 28-1

210 697 90029 C 28-1

North east beach - mid way

3 Dec

BFA



3 Dec

211 - 697-90156 3-2

212 737-97750 3-2

213 737 45755 3-3

214 587-85684* 3-2

215 767 51780

216 no bond 1-1

217 Bond & Work of Transit No 5 frames

218 697 22963

219 587 85698* 1-1

220 737 97629 3-2

221 587 85688* 1-1

222 737 35732 1-1

224 587 85685* 2-1

225 737 45517 3-2

226 587 85686* 2-1

3 km

LA ← →

Sept

97 - 737 90 969

98 737 90 964

99 737 91 340

101 697 22173

104 587 - 85689*

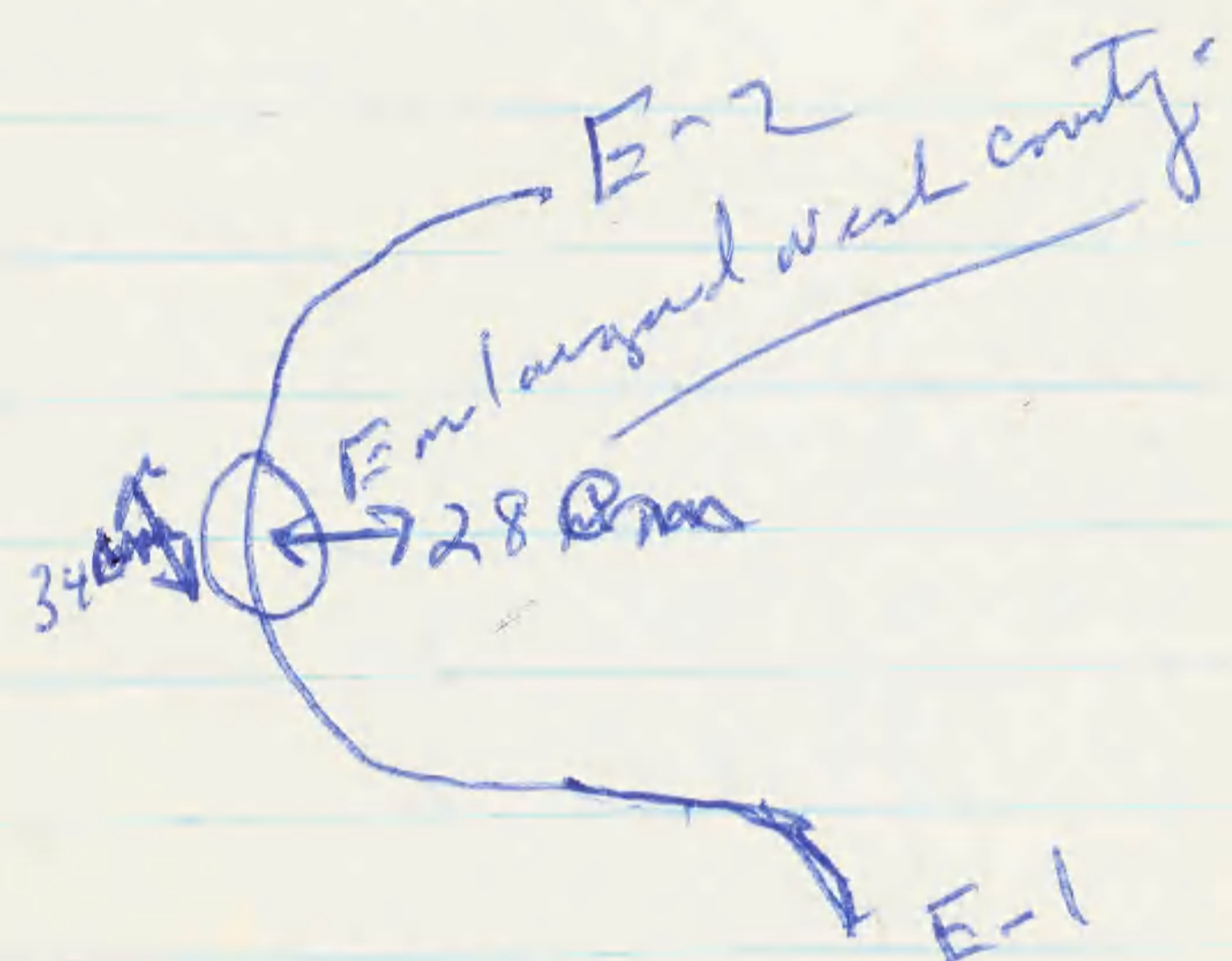
102 737 47162

103 737 90089

105 587 - 85689

North River River
 3 Dec 1750 total area
 31 June 1750 head ca 20km
 9 Ads. → @ 180°
 150 RFB
 June still present

4 December



222 km long from
 entrance to alluvium
 61 cm deep at Nash county

Adult bird 903-15320
 in burrow @ 1530 hrs.

♂ *franklinii* ♂
 burrow in ♂
 z

BTA

5 Dec

F (Horn ^{Northward} going South)

223 737 45615 - 2-1 ♀

227 737- 91623 3-1 ♀

228 Bird seen

229 737 91921 3-1 -

230 587 ⁸⁵ 58698* 2-1 ♀

231 587 ⁸⁵ 58691* 2-1 ♀

232 767 46797 3-1 ♀

233) 697 90132 2-1 -

236 697 30128 1-1 ♀

237) 667 39676 2-1 ♀

238) (587 ⁸⁵ 58697) 3-2 -

239) 737 45758 5-3 -

240) 697 90067 2-1 ✓

241) 737 97683 5-3

242) 737 94806 1-1

243) 737 45730 2-1

244) 737 93066 3-2 ✓

235 (587 - 85715) 2-1 ✓

244) 737 45477 3-2

245) 737 95925 3-2

246) 737 45771 3-2

247) 667 39685 1-1

248) 737 92624 3-2

~~249~~) 737 92682 3-2

250) 737 45148 4-3 EXP

251) 737 31464 -

252 597 84165 EXP

253 737 93795

254) 587- 85782* ✓

255) 587 85722* ✓

256) 757 - 76913 1-1

257) (587 58773) 2-2 ♀

(767 - 46704 + Red Phalarope)

258 767 - 46754 2-1

260 587 85723* 1-1

261 737 45765 3-2

LA

5 Dec

106 737-94952 - ♀

107 667 35270 - ♀

108 587 ~~58692~~⁸⁵* -

109 667 39773

110 737 45813 ♀

111 697 22467 ♀

112 737 96250 -

113 667 39620 -

114 587 - 58693* ♀

115 587 58694* -

116 767 45691 -

117 697 22461 ♀

118 737 96251 -

119 586 95* -

120 667 35220 ♀ Blue Phoebe on R. Leg.

121) 587 58696* -

122 737 45593 -

123 697 22480 ♀

124 737 96810 -

125- 697 22449 -

126) 697 22381 -

127) 697 22384 -

128) 697 90600 ♀

129) 737 91736 -

130) 667 35218 ♀

131) 697 90764 ♀

132) 737 96897 -

133) 587 - 58699* -

134) 737 96899 -

135) 777 49973 ♀

136) 697 90759 -

137) 667 35208 -

138) 697 22377 -

139) 667 35205 -

140) 697 22376 -

141) 697 90757 -

142) 737 94770 ♀

143) 737 45968 -

144) 587-58700* -
145) 697 90755 -
146) 587-85716* ♀ ✓
147) 697 - 90751 -
148) 587-85717* ✓
149) 667 39694 -
150) 697 - 22369 -
151) 737 96224
152) 737 45876
153) 737 97729
154) 587 71816 ~~✗~~
155) 697 22236
156) 587 85718* ✓
157) 587 85719* ✓
158) 667 39713
159) 697 90735
150) 587 36473
161) 767 46686
162) 587 85720* ✓

163) 767 46684

164) 737 97798

165) 697 90722

166) 737 97799

167) 737 97641

168) 737 47184

169) 737 96198

Went 5 P

170) } 737 47182 } on one lid
697 90714 } egg 40m

171) 767-46682

172) 737-47183

173) 737 96123

174) 737 45588

175) 737 94640

176) 697 22260

177) 737-97635

178) 587-85721 ✓

① 697 22254 - Ch

177 737-94429 ♀

180 { 737 94184 ♀

{ 737 96227 - ?

181 737 94636 - ♀

182 737 94955

~~262~~
~~737 91622 - 262~~
~~was snatched~~

262 587-85724 1-1 ✓

263) 737 97676 - 1-1

6 Dec 1800

47 How Nodder

10 Bi " "

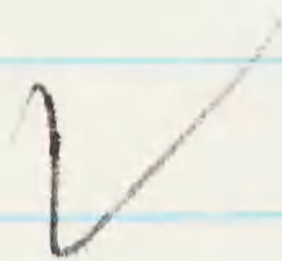
on 50 pt

218 Ad RPB 1815

Central Park 100% Clouds

wt. 48Kms

Ca 25 fuytes



ring

Ca 250 Bonins

in SA-t

@ Dark.

LA 10 Dec

no

- 182 737 90028 —
183 737 - 92092
184 No Band - (H)
185 697-22444 ♀
186 737 - 46050 —
18 697 22779 + long M
187 667 35413
188 737 - 92735 ♀ ♀ 8-10
189 737 - 46080 —
190 737-91204 —
191 No band —
192 737-46078 —
193 737-94901 —
194 667 - ~~35413~~ 235402 ←
195 No Band.
196 667-35410
196 737 - 46077 ♀
197 737 - 46052

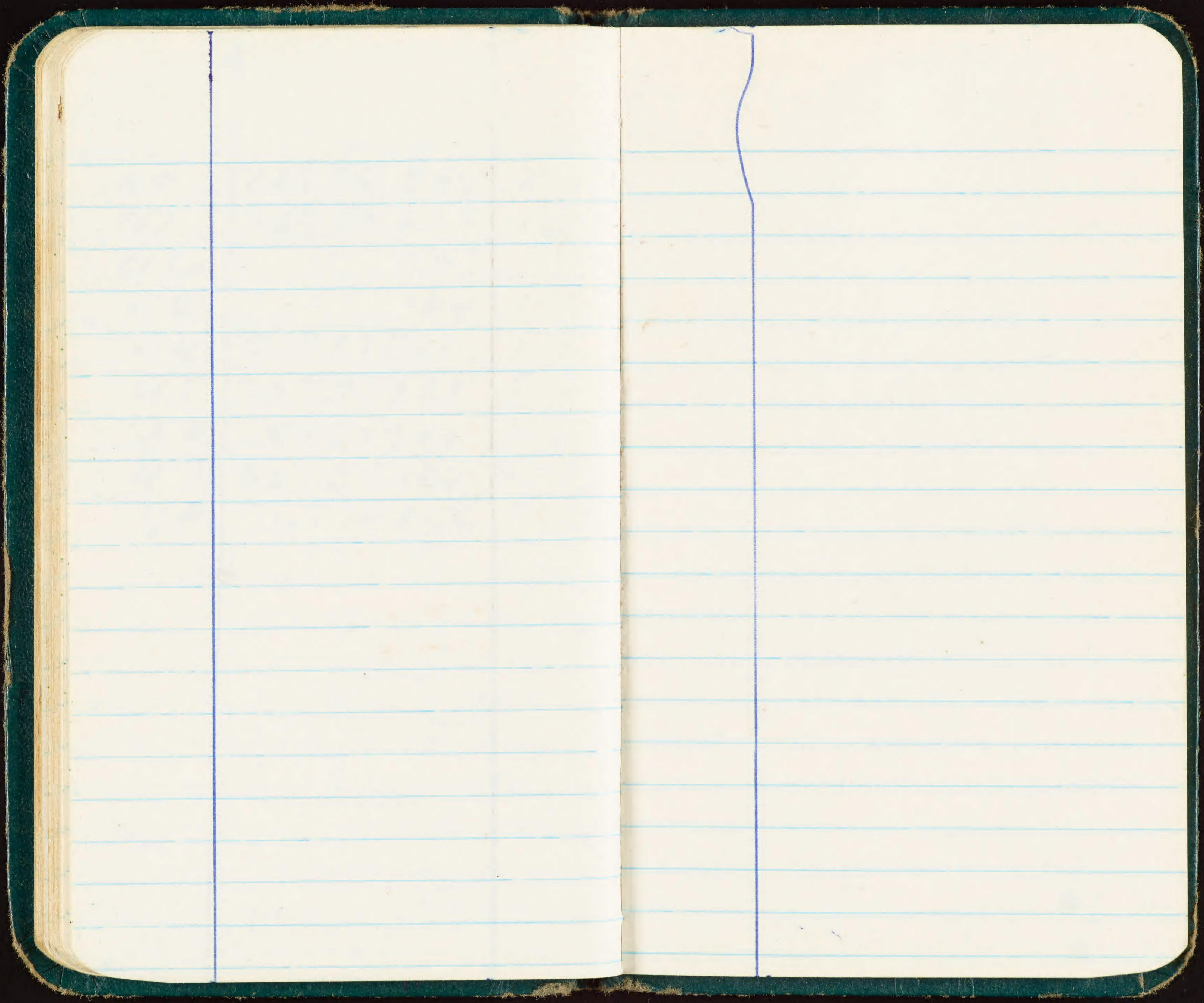
BFA - 10/20

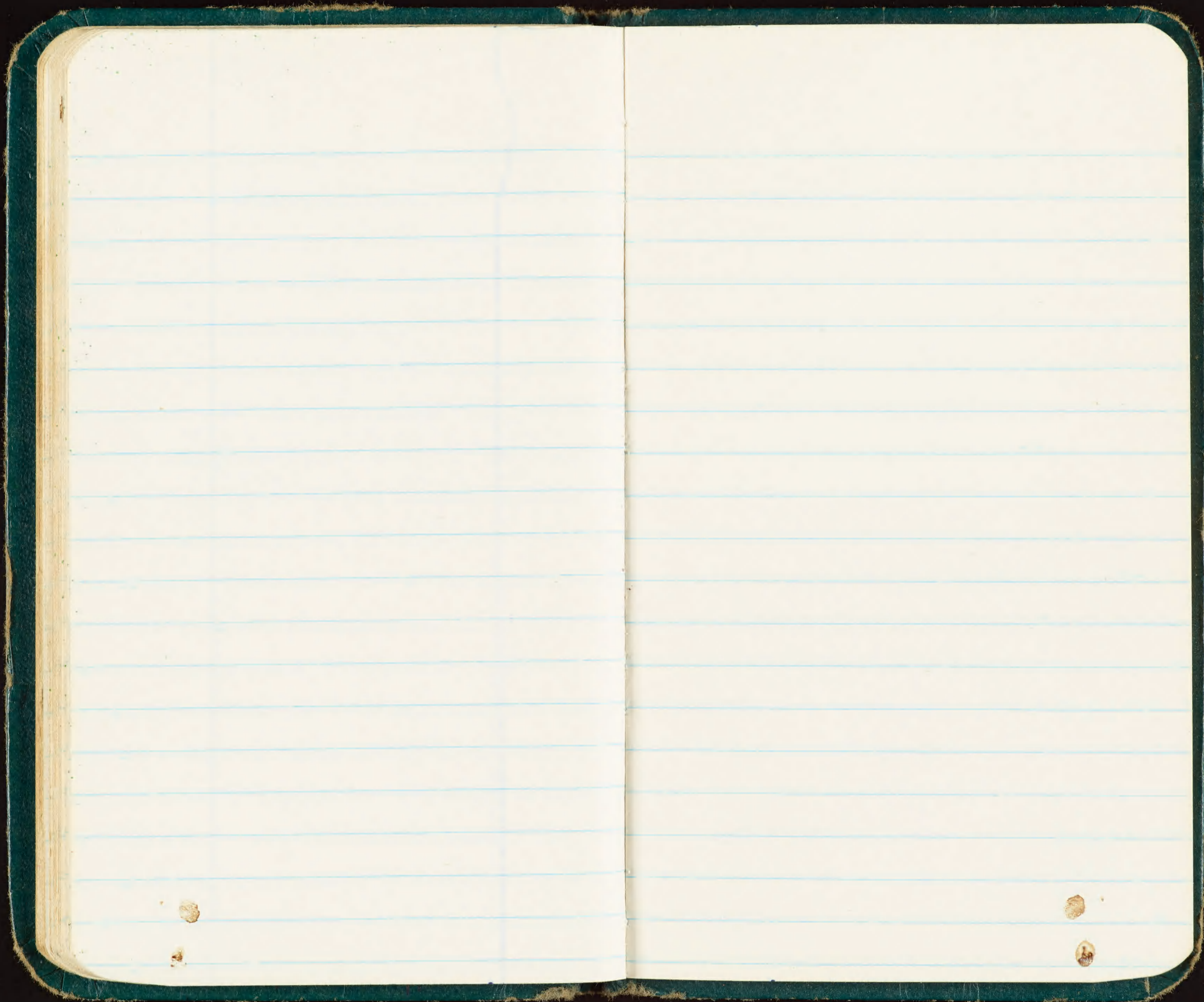
Blood

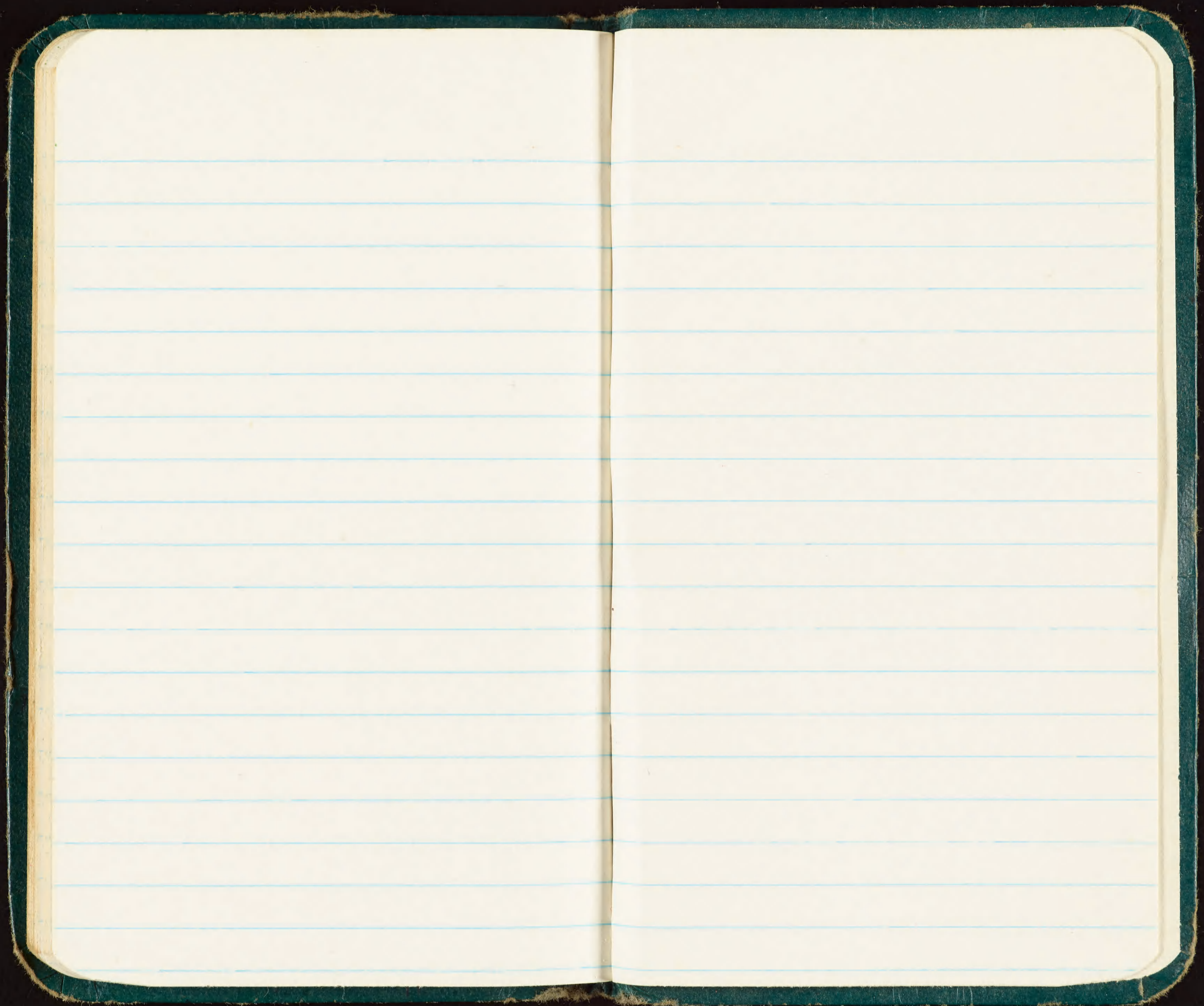
1	587-85725*	(2-1)
2	737-45722	(3-3)
3	737-93758	(1-1)
4	26*	(1-1)
5	737-45480	(2-1)
6	27*	(1-1)
7	28*	(1-1)
8	29	3-2
9	30	2-1
10	31	1-1
11	32	2-1
12	33	1-1
13	34	1-1
14	35	1-1
15	36	1-1
16	37	1-1
17	38	1-1
18	767-51786	1-1
19	737-93968	1-1

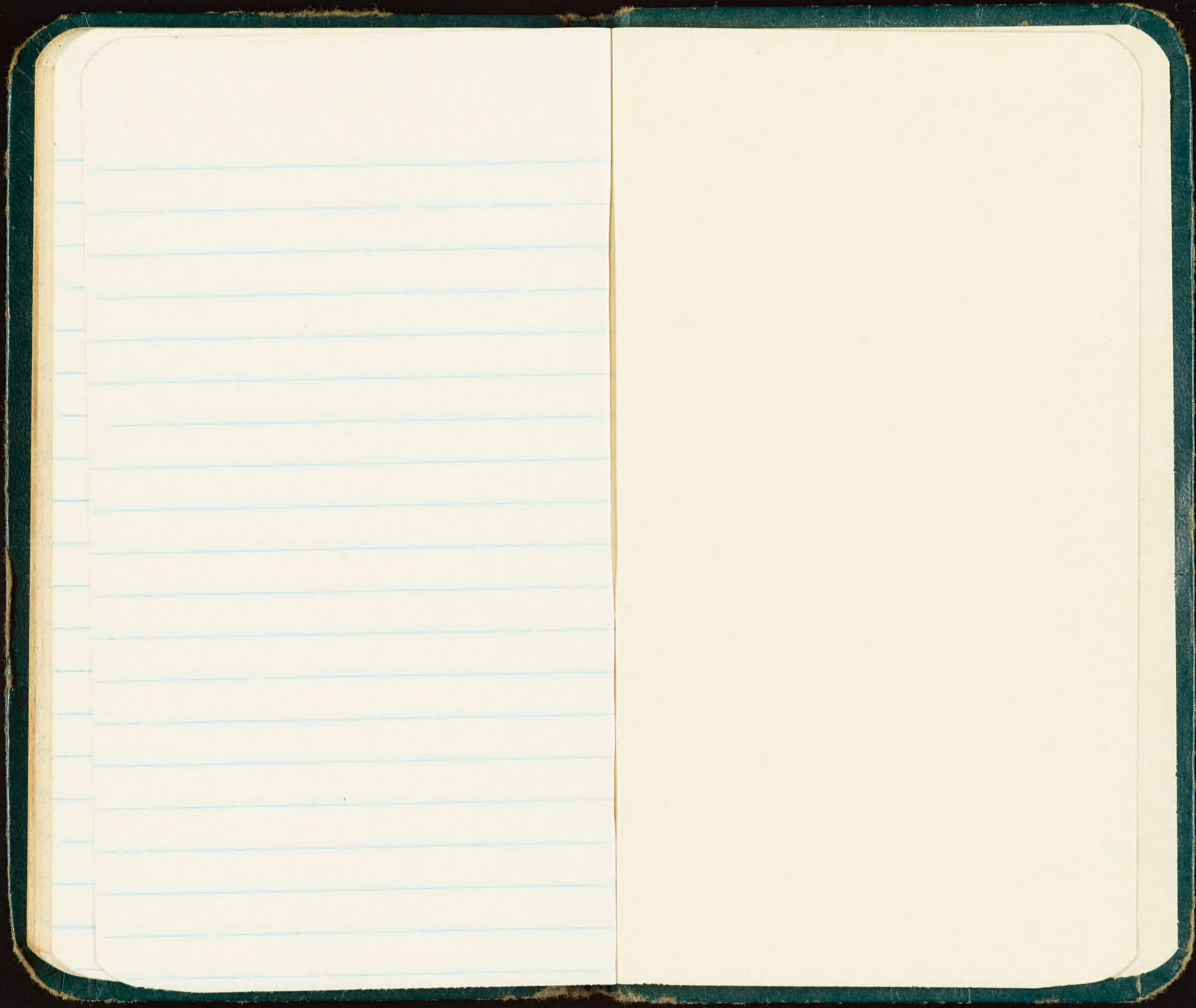
20	767-51781	2-1
21	737-94566 ^{North}	2-2
22	737 45581	2-1
23	697 90138	2-1
24	737 97684	2-1
25	737 39178	1-1
26	737 93047	1-1
27	697 90103	1-1
28	587 58586	2-2
29	737 93902	1-1
30	597 84143	2-1
31		40 1-1
32		39 1-1
33	737 43516	2-2
34	697 22970	1-1
35		41 1-1
36	737 90821	1-1
37	767 78241	1-1
38	767 90052	1-1
39		412 1-1

40	73794564	2-1
41	73792622	1-1
42		43 1-1
43		44 1-1
44	23797241	1-1
45	73793725	2-2
46	69722917	2-1
47	66735084	2-1
48	76778862	1-1









BFA 260

2A - 174

GSA-U.S. GOV'T
22

7530-222-0078
FEDERAL SUPPLY SERVICE

Memoranda



Coordinates

28° 25'

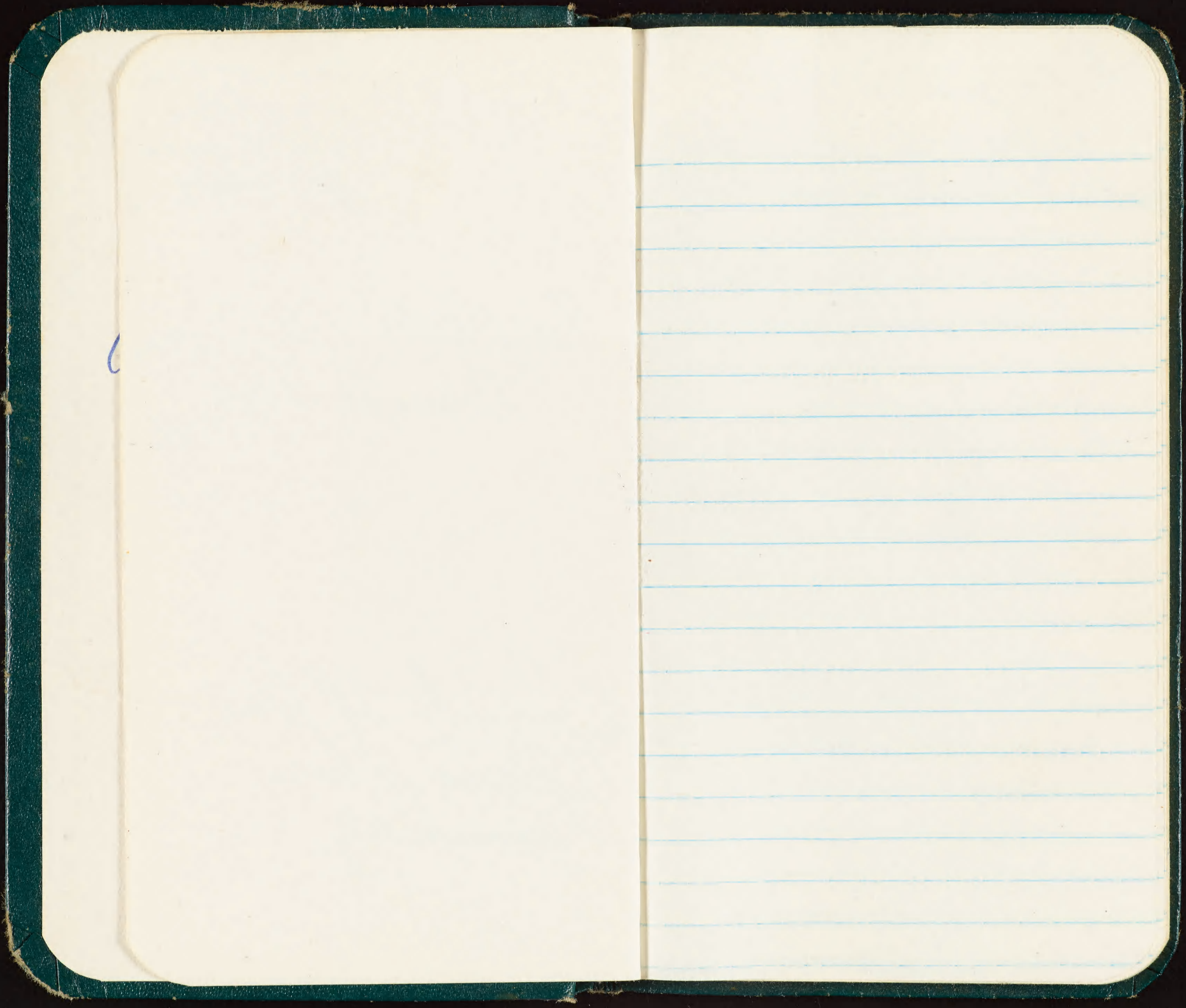
178° 20' W.

Vernon M. Kleen
USCG - Kane
USNS - box 36
APO 96614

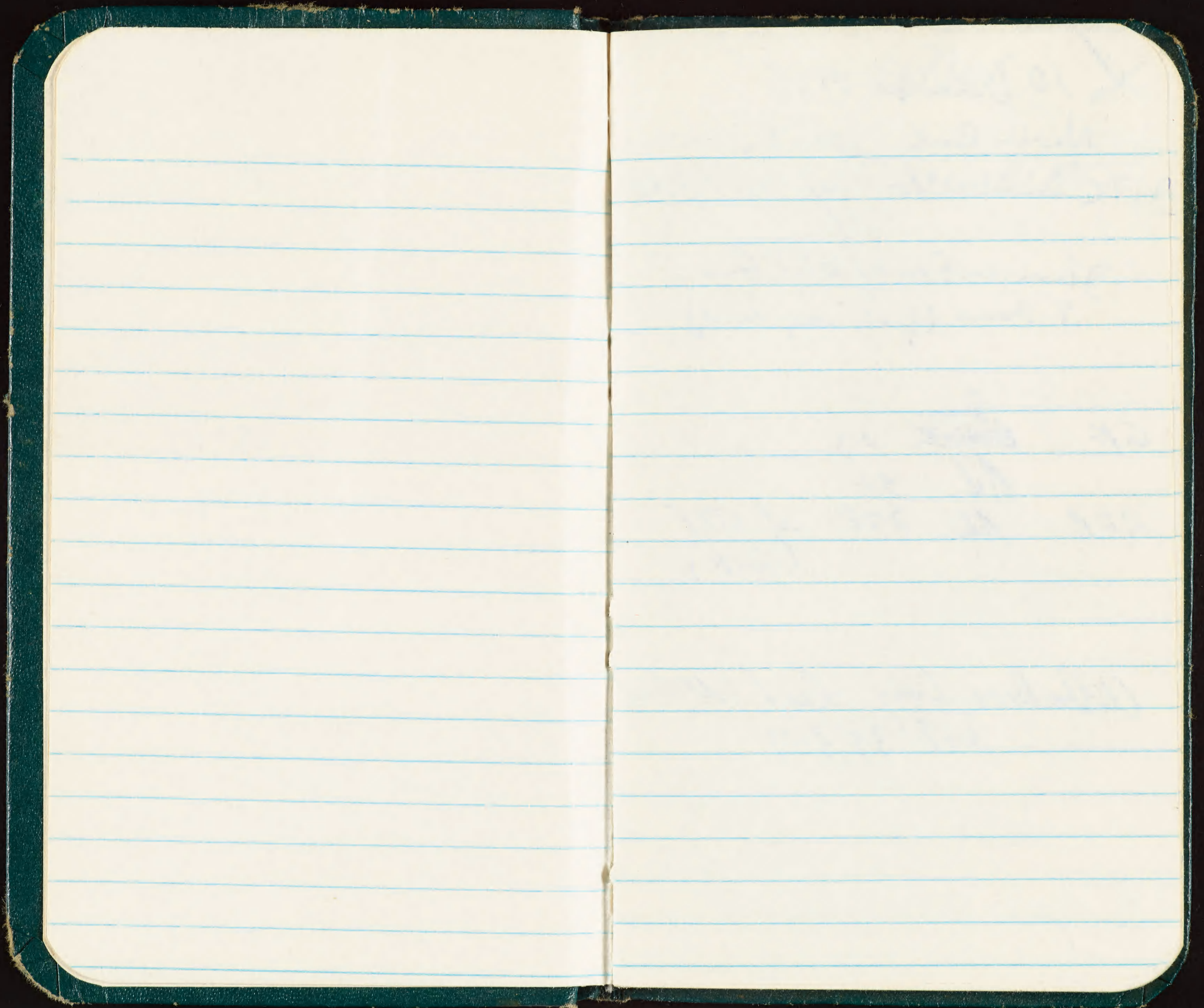
Field Notes -

December 1968

Important If found,
please return
immediately.



6



✓ 10 Decem ber 1968

North Rock 1800 hrs

C count 100% w/ 15-18 @ 070

Imm. in front of Plat Gun
9 Present (full complement)

GP ^{Imm.}
~~locally~~ 23

Ad 32

RFB Ad 278 at 1815
(dark)

Albatross lay dead N beach
667-35339

11 Dec. ✓

773-18401 BIP - Sat.

1 14 Dec

RFB ~~10~~ imm. 10 at
(1745) in N roost.

GF imm. = 89

RFB adults = 7

Fairy Tern - 2 flew over
N end of Island at 1755

BB - 4 adults arriving from
N at 1755 in formation
& @ at @ 400'

1800 Several RF's arriving
high from W.

LA dead 737-96063 ✓

14 Dec

Sunset - 1803

RFB Ad - 85

Sub 6

GF - total 82

Sky 50%
Cloudy
Wind NW
@ 20k

1810 BB - 14 @ N Pt. in
1 group.

1815 - RFB 162 ad.
6 sub.

in colony roosting
@ 20 flying ad.

N Beach
26 RT 1825
4 Sander.

14 Dec

BIP 1 bird in fence
2200 hrs

N. Loon
RFB's 2230

767-45952 Ad ♀?

767-45501 Ad

45815

737-91688 " DeLong

767-46995 " ♂?

46919 "

51309 "

45978 "

737-90630 "

91560 "

91059 "

98412 "

91979 "

767-46999 Ad ♀?

737-99665 "

697-70940 "

767-54912

see below for more

BIP Study area 2

773-18474

RFB's 737-45449

767-45935

737-45320

767-51501

697-70791

757-36478

767-51392

767-51400

737-45277

Brown Booby: 737-45424 ♂

DeLong's
Records

FFS 6/67

(Super?)

✓ 15 Dec →

Count

RFB 737-91794 Ad

767-51336 "

737-95948 "

95997 "

767-45202 "

737 45138 "

767-46911 "

767-51377 Saw (2 yrs)

767-45296 Ad

737-45283 "

767-45204 "

737-47584 "

767-54909 "

→ 157 35413 "

737-98409 "

737-45437 "

697-24595 "

767-45263 "

737-95926 "

767-45809 "

✓
767-50794 Saw (2 yrs)

51341 "

737-98465 Ad

767-51529 Saw (2 yrs)

767-46965 Ad

737 91580 "

91600 -

Found one healthy
Empidon Goose on
East beach at
Boo house.
Caught easily.

16 Dec

BAP 10 in cage
at 2330 hrs.

17 Dec

RTTB 2 ad WEI
2" ~~NAFF~~
BB³ 737-45155 dead WEI

BFA ^{nest}
No 27 abandoned

BFB in NAF at 1350
#6, #8, 20, 19, 31, 1P

SATC #52, 53

BTC NAF 1330

17 Dec

Wind E 10-15
Sky 100%
Cldy

Radar Tower 1800

RFB 111 at 6 am
103 " 9 "

BIP Int seen 1815

Dec 17

Sera

Bot. Top

- | | | |
|-----------------|-----|---|
| 1. BFA #54 | 1-1 | |
| 2. " 737-90820 | 1-1 | |
| 3. " 737-98546 | 1-1 | |
| 4. " 697-90129 | 3-2 | |
| 5. " 697-90060 | 2-2 | |
| 6. " 737-90109 | 2-1 | |
| 7. " #55 | 1-1 | |
| 8. " #56 | 1-1 | |
| 9. " #57 | 1-1 | |
| 10. " #58 | 3-2 | |
| 11. " 757-75520 | 1-1 | |
| 12. " #59 | 2-1 | |
| 13. " 767-77490 | 1-1 | ♂ |
| 14. " 767-93830 | 1-1 | |
| 15. " #60 | 1-1 | |
| 16. " 737-97424 | 1-1 | |

Dec 17
2400

SAP

BFB - 49, 48, 53, 52

NAP # 20, 8, 19, 31, 24
47, 18

BIP 753-33017 NAP 2400

903-13052

753-33367 } pair NBP

753-33319 }

753-32585

Dec 18

PTTB 1 around fuel tanks
1030

BT-A seed at N. Pt.
697-90153

BB battery

19 Dec.

1750 Sky 40% Cldy
Wind N 20-30 K

Sunset = 1802

North Roost from N. Tower

RFB locals 7 present 1755
in front of tower
" adults 156
(at sunset) subadults 4

~~767-51623 beginning of string~~
9700

BIP	903-14730	NBP	Study Area 2
"	793-20664	NBP	"
"	903 14723	"	"
"	{ 903 03845	1 bird	"
	{ 903 15022	"	"
"	903 13184	"	"
"	903 13186	"	"
"	903 03301	"	"
"	903 15355	"	"
"	903 13151	"	"

19 Dec

BIP	903 14734	NBP	inside
"	903-15302	"	Out
"	753-33884	"	"
	903-15460		
	793-20536		
	903-13141		
	753-33726		
	903-13320		repeat
	753-33726		
	903-15262		
	903-15461		repeat
	753-33486		
	903-15461		repeat
	(903 14779		
	03505)		
	903-03329		
	903-15056		
	793-20479		
	903-15202		

last Copulation seen

793-21402 NBP
(793-20666)
903-15200

903-13164

903-13163

793-20670

903-15060

903-15401

903-13074

903-03726

903-15059

(903 15393)
(793 20610)

903-15190

903-03835
903-15096

753 33725

903-13227 ♀

19 Dec

903-03217

903-03373
903-13222

RFB locals banded 767-516
23 → 30

One Short Eared Owl
along runway. 2330

Ad RFB 767 51336 ~~Ad~~
C Roost

" " 737-95996

Sub B-w 767 50959 (y) ~~Ad~~

Ad 767-46968

" 767-51514

" 767-45246

" 737-95939

S B-w 767, 40619 2y ~~Ad~~

BB 767 51101 (y) Ad ♀
~~Ad~~ Roost
cont

20 Dec

WT banded 682-47314
Wg: 161 Vit: 39 mm

CP - first seen w/ belly
starting to turn black.

BFA - 40 birds sitting at
5 pt. along seawall
at 1730

LA 737-47285 had left foot.
I launched it into the air
& it flew off okay.

20 Dec

allatris: possibly
ygs but arrived today.
lots of courtship behavior
that hasn't been seen
recently.

F7 flew by later tower
1750

South Point (from later tower)

RFB - ~~13~~ locals at 1755

~~75~~ adults at 1805
85 + 110 + 20 flying
West East

@ 20 locals at 1805

Sky = 90% cloudy
W = East 15-20
Sunset: 1803
1800

20 Dec

38 RT in 1 feeding
flashed by dock
on NW beach

BIP first seen 1815
75% cloudy W-E
15-20 E

21 Dec

BIP first seen at 1820
100% Clear W-E
10K

Rain heavy from
0730 → ~~10~~ 1730
then cleared rapidly
& again vari at 2200.

22 Dec
attempted
Christmas Count.

54 H. Monk seals
on Sand Island
at 1400

none tagged.

BIP first seen 1818

Intermittent rain
today.

23 Dec.

all tin foil on top
of BIP enclosure blew
away during night

Several albatross nest
abandoned due to blowing
sand from heavy wind
last night & today.

BIP first seen at 1819

24 Dec

Marked all Allakoon
nests along SW beach

Saw 1 banded Jaeger

~~5th first at 1820~~

25 Dec

BIP first at 1820

W = 10K SW

Skyl = 80% cly

26 Dec

0445 -

SWB CA 37 BFA 103

JEB 5 15

W. 48 3

Collected 4 rats from BIP
study area.

BIP first at 1822

W = 15K NW

Skyl 90% cly

12 BIP checked for brood patch,
none yet.

26 Dec

Laysan Albatross
along runway
2130 → 2330

1. L.A. #61 587-857--
- 2 #62
- 3 #63
- 4 64
- 5 737-90878
- 6 05
- 7 737-91301
- 8 66
- 9 67
10. 737-96877
11. 737-92057
12. 68
13. 737-47470
14. 69
15. 737-94765
16. 737-92348

17. L.A. #70
18. 697-90479
19. #71
20. 737-96394
21. 737-92768
22. 72
23. 697-90468
24. 697-22327
25. 737-47342
26. 737-47341
27. 73
28. 74
29. 737-90932
30. 75
31. 737-41786
32. 737-47439
33. 76
34. 77
35. 78
36. 737-94115
37. 737-96943

35A
39, 697-24524
40.
79

27 Dec

0630-

W = 15-25 k NW

Sky = 20% Cldy

SAF LA 44 BB-12

— BFB 34

NAF LA 28 BB 52

BFB 79

Quel sp. 1 West, Hrs, Sl-back
~~Colours - mixed~~

N. Wood 370 RFB 150 flying
GF

RT - 97 along NW-SW beach
0745

RT 76 2 NAF 1218

27 Dec

0910 SWB SEB ¹²³⁰ AFB

GP ~~2~~ 4 14

RT 34 13 13

Sand 1 6 —

WT 3 —

BTC

(1) 0030

BTP 1827

W = 5-10 NW
sky Clear.

27 Dec

Blood samples along SE
side of Runway

1. L.A. #81 #82 lost
2. 697-79573
3. #83
4. 667-35224
5. 84
6. 85
7. 737-93279
8. 86
9. 737-94061
10. 767-45400
11. 737-96895
12. 737-91934
13. 697-90591
14. 737-96241
15. 737-91751
16. 87
17. 88
18. 737-94438
19. 89

20. 737-94443

21. 737-93600

22. 90

23. 597-51175

24. 737-90084

28 Dec

BTP Just 1822
W-S 15-20K
Sky - 90% Cldy

28 Dec

	NW beach	Sun	2245 0045
1.	Laysan	#91	937
2.		667-35307	938
3.		737-90682	939
4.		737-47219	940
5.		737-47220	941
6.		767-45319	942
7.		92	943
8.		93	944
9.		697-90232	945
10.		94	950
11.		697-90910	951 946
12.		697 90895 & 737-47261	
13.	East beach	95	947
14 & 15	BFA	wounded.	949
16.		96	948

29 Dec

Rain all day.

30 Dec

1800 ~~the~~ fuel? eq.
still present

Rained today until

1330 hrs.

F7 1 by Kater Jones
1755

Sunset 1808

W: 5 K from North

Sky: 100% Clear overhead

30% Cloudy overall.

Central roost

RFB locals at 55 = 17

adults South gyp 82

central gyp. 119

BIP Brat seen 1833

Sera 30 Dec

1.	RFB	767-50971	Ad 982
2.	LA <u>sw back</u>	737-99053	952
3.	"	667-39059	3
4.	"	97	4
5.	"	667-35455	5
6.	"	737-96690	6
7.	"	667-35452	7
8.	" <u>dead</u>	697-90355	8
9.	"	737-98039	9
10.	"	697-90346	60
11.	"	98	961
12.	"	697-90358	2
13.	"	99	3
14.	"	→ <u>last band of string</u> 587-85800	4
15.	"	737-91351	5
16.	"	737-91000	6
17.	"	737-96453	7
18.	"	597-57962	8
19.	"	737-92153	9
20.	"	697 757 -90435	970

21.	LA.	737-91298	971
22.	RFB	737-91583	Ad 983
23.	LA.	737-97682	972
24.	LA.	697-22155	3
25.	"	737-90974	4
26.	"	697-22052	5
27.	"	737-97751	6
28.	"	737-92163	7
29.	"	737-94825	8
30.	"	667-39086	9
31.	"	737-91164	980
32.	"	737-45571	1

31 Dec

f Sandstings NW back

1755

~~Old~~ Gull - barracks

area flying 1200

BTC along E. end of RW
at 1630 (heard it)

BIP first at 1738

31 Dec

Summit 1808

W: 25-30 NW

Sky 2 100% clear
overhead 40% city

W Roost

RFB ad = 185

min. directly in front
of tower = 7

GP = 33

31 Dec

SAT band #

BFB leads $\frac{025}{034}$

NAE

check # 8 BFB

31

RD # 017

H47

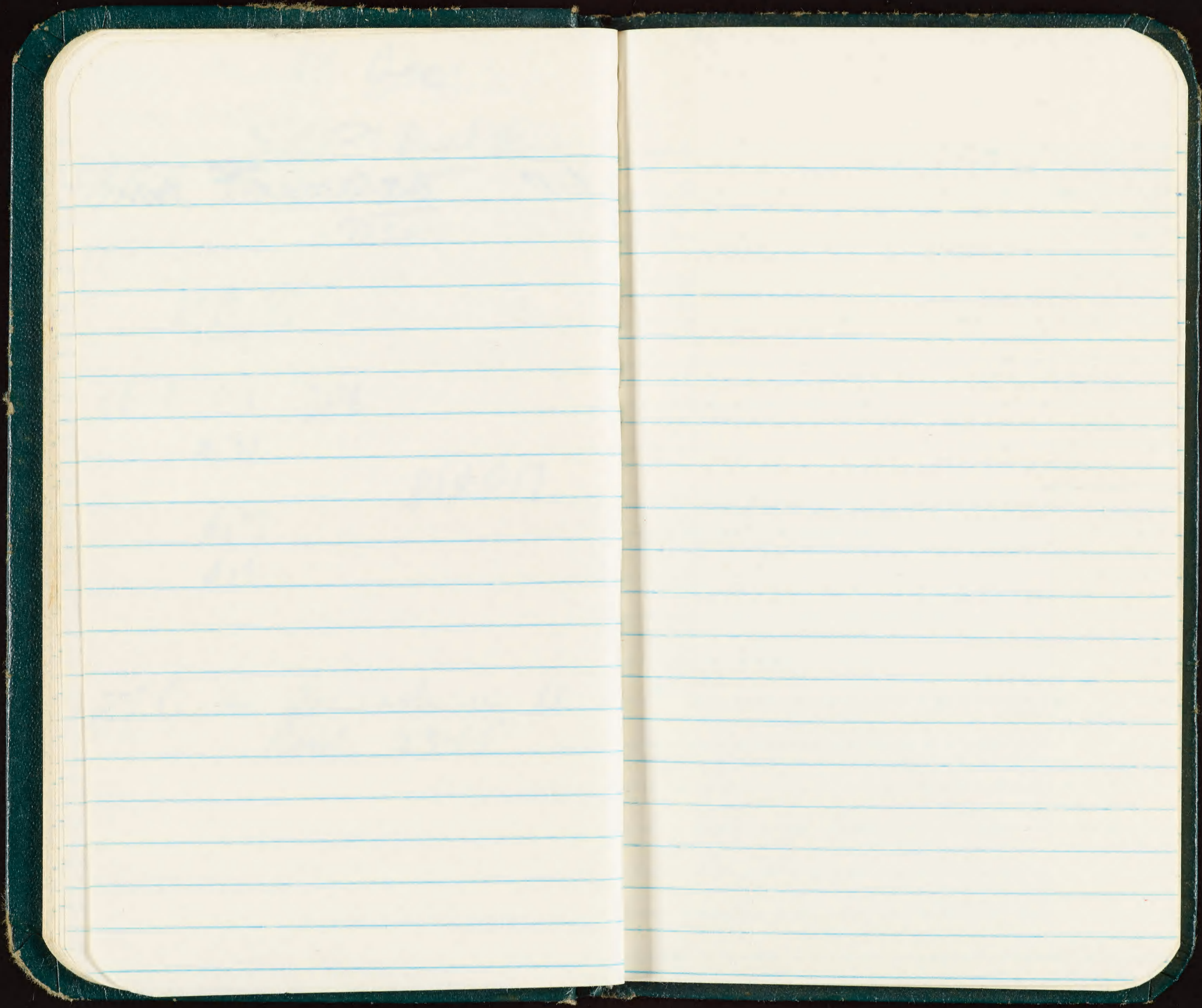
A15

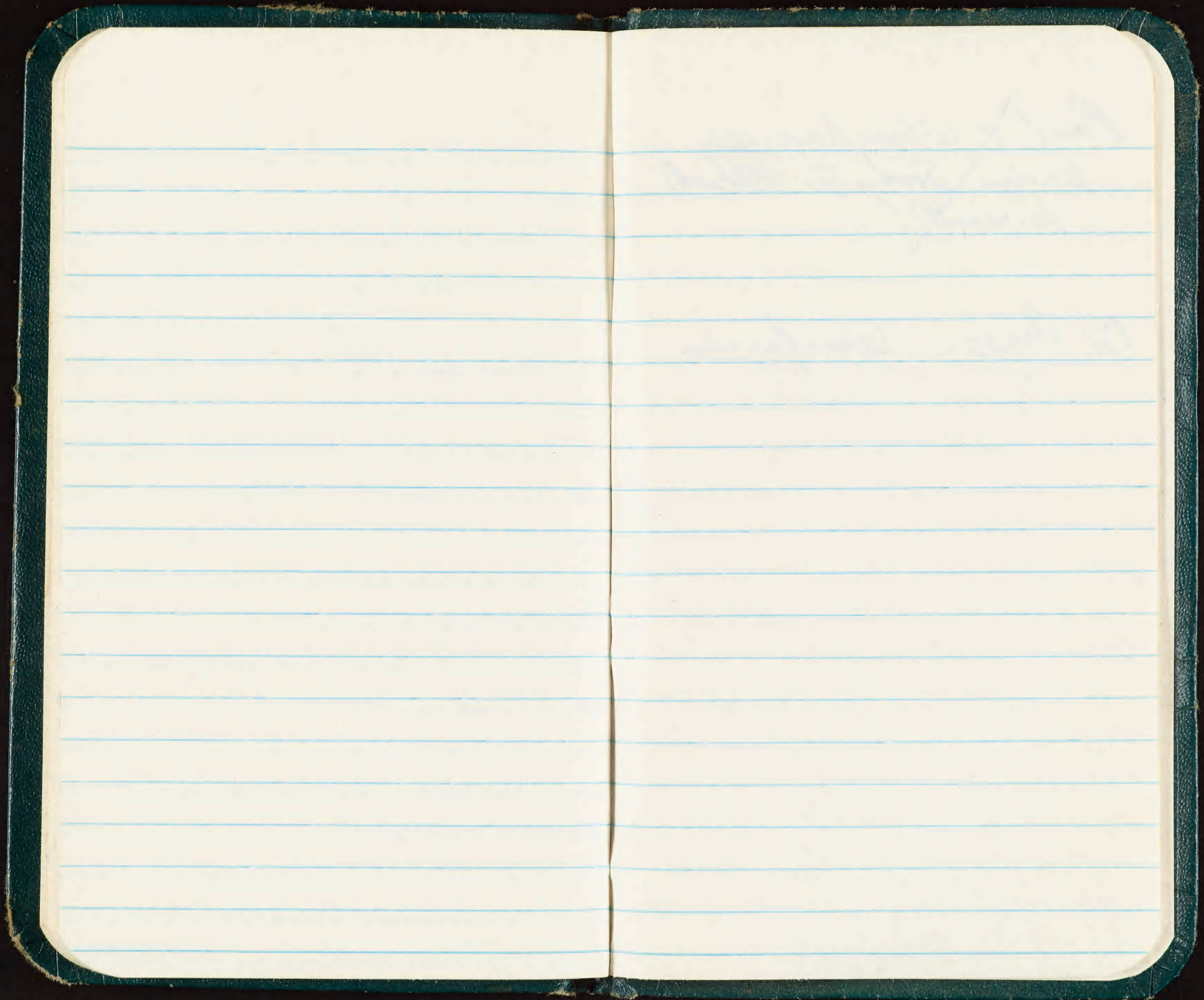
BTC in sewer in N.
Roost. 2345

BIP

903-03067 ^{WSP}

JAT





~~Paul: Where have you
known Sooty Fr. Petrels
to nest?~~

Dr. Pyle Warfarin



7530-222-0078

FEDERAL SUPPLY SERVICE