

Historic, Archive Document

Do not assume content reflects current scientific knowledge, policies, or practices.



THE RED GRAVENSTEIN—7 TO 9 FOOT TREES

Almost an everbearing apple. A new introduction, but thoroughly tested. Ripens over a period of three months. Most delicious for the home table.

THE Red Gravenstein will be a welcome addition to the gardens of our customers, for it possesses all the good qualities of the old Gravenstein in flavor, size and shape, and has the advantage of a long ripening period to which is added a beautiful red color which greatly increases its attractiveness.

The Red Gravenstein is very large and shapely in size and rich red in color with the flesh also slightly tinged. It is crisp, juicy, aromatic, tender, of the most luscious flavor, incomparable with any other variety we know of. Once tasted, never forgotten, is all that we can say. The long period of ripening is its greatest advantage, starting in August and lasting until late fall. This advantage, in addition to being the best in eating apples, should make its planting a necessity in every home garden.

We are fortunate in being able to offer to our patrons this spring, a limited quantity of specimen, early-to-bear trees, 7 to 9 feet in height, \$4.00 each, \$40.00 per dozen.

MAYO NURSERIES, INC.

World's Best Trees and Plants for the Home Grounds

Ellwanger & Barry Bldg.

Rochester, New York



McIntosh Red

A Tree such as this in Your Garden Means Joy to the Kiddies, Pleasure and Satisfaction to Yourself. A Six Year Bearing Apple Tree.

Apples

SPECIMEN EARLY-TO-BEAR TREES

Symmetrical Tops

Beautiful Fibrous Root Systems

Smooth Trunks



THE fear that there will be long years of waiting before one can gather fruit is a "bogy" that is easily overcome by the planting of a few Bearing Age Trees, provided these trees are of the highest type. Each Apple Tree that we offer below is carefully grown, carefully selected, a specimen with a mass of fibrous roots, and heavily branched symmetrical tops. Each tree will run *six to eight feet in height*, and will average nearer the latter than the former. Planting such trees means rich, juicy fruit without years of waiting, and in a quantity that will give it a place on the family bill of fare. If given ordinary care and attention these trees will produce the finest and best type of Apples for you on your home grounds.

Summer Varieties

RED ASTRACHAN—Tree vigorous, upright, hardy and productive. Fruit medium to large; surface smooth, marbled and striped on greenish-yellow; flavor acid.

YELLOW TRANSPARENT—The tree is a hardy, upright grower; regular and early bearer, medium size. Color a rich, transparent yellow; flesh melting, juicy, subacid.

Fall Varieties

DUCHESS—A large, beautiful apple, roundish. Streaked red and yellow; tender, juicy and pleasant. Tree a vigorous, fine grower and abundant bearer. Very hardy. September.

FAMEUSE—Medium size, roundish; crimson. Flesh snowy white; very tender, fine juicy, mild, subacid; one of the finest dessert fruits. October and December.

MAIDEN BLUSH—Large, smooth regular, evenly shaded red cheek; flesh white, tender, sprightly, with a pleasant subacid flavor. Bears large crops. October.

Winter Varieties

McINTOSH—Medium large; smooth, yellow, covered with brilliant crimson; flesh snowy white, very tender, aromatic; subacid; very good quality. Tree vigorous; a good annual bearer—November to February.

GRIMES GOLDEN—This is one of the most popular apples in cultivation. Tree strong; thrifty grower; fruit yellow veined, russeted; flesh yellow, firm, quality rich. November and December.

NORTHERN SPY—Large; roundish; striped with sunny side purplish-red; flesh white and tender; mild, rich, spicy flavor. An old favorite. December.

DELICIOUS—Flourishes well in every state. Bears annually; great yielder. Fruit very large; flesh fine grained, crisp, juicy, melting, delicious.

ROME BEAUTY—Large, yellow, striped with red, flesh juicy, crisp, subacid, tree moderate grower. October and December.

WINESAP—Large, roundish, deep red; medium quality; keeps well; tree is fair grower; good bearer. December to May.

Specimen early-to-bear apple trees of the above varieties, 6 to 8 feet in height, \$1.50 each; \$15.00 per dozen; \$110.00 per hundred.



Rochester Peach — pick them like this next August

June 12, 1923.

Mayo Nurseries, Inc., Rochester, N. Y.

Gentlemen:

Enclosed please find my check for \$20.00 covering twelve special Rochester peach trees shipped on the 25th of May.

I have purchased stock from —, from —, and several others, but wish to go on record here and now as stating that the peach trees received from you were the very finest looking trees which I have ever purchased.

Please quote me a price on two hundred trees similar in size and character to the trees received for probable delivery in the fall.

Very truly yours,

(Signed) Joseph R. Hague,
Columbus, Ohio.

Note how late we can ship Nursery Stock, the above order going forward on the 25th of May

The New Rochester Peach



One-Year Tree—Planted in 1914; bearing 17 peaches in 1915

THE most delicious peach in the world to eat out of hand or canned. Large, yellow and red free-stone; flesh golden-yellow, highly flavored; stone very small. The Rochester ripens in early August when there is no other yellow or red free-stone ripe, and three weeks before the Early Crawford.

The original orchard has borne its tenth annual crop this season, being the finest quality the trees have ever produced, some specimens measuring twelve inches in circumference and weighing over twelve ounces.

The tree is a strong, upright grower, has stood sixteen degrees below zero and produced a full crop; while Elberta and Crawford under the same conditions produced no fruit. The Rochester peach bears when very young.

The accompanying picture is an illustration of one of 500 trees planted at Greece, N. Y., in the Spring of 1914, producing 17 peaches in the month of August, 1915. It is seldom

known to fruit-growers for young peach trees planted a little over a year to bear fruit. The New Rochester Peach solves the problem.

J. H. HALE—Season follows Rochester.

Very large, rich golden yellow with carmine blush. Flesh firm but of delicate texture dripping with rich, sweet juice. Very hardy.

ELBERTA—Season follows J. H. Hale. The best peach of its season, and one of the greatest commercial peaches on the market today on account of its splendid shipping qualities. The fruit is rich yellow with red cheek, juicy and highly flavored. Very hardy.

We have some beautiful large specimen, early-to-bear trees, of the above three varieties, 6 to 8 feet in height. Symmetrically branched, beautifully rooted. Price, \$2.00 each; \$20.00 per dozen; \$125.00 per hundred.



Lamberts — appeal to the youngsters

The Cherry

MADE THE PIE FAMOUS



You remember, of course, the big, fat, rich cherries for which you climbed the tree when a boy. Why deprive your children and yourself of the same pleasure today? You can have all the rich, juicy cherries you want and have them quick if you will plant some of our magnificent bearing age trees which we offer in the following varieties. Each tree has been grown, cultivated, and pruned for a specimen. All the trees run 6 to 8 feet in height symmetrically branched, heavily rooted trees that save you two seasons of waiting and which will repay you richly in satisfaction.

The Super-Cherry — Lambert

THE TREE—In the years following planting the Lambert develops into a very beautiful tree, being a strong, rugged, vigorous grower, with dense healthy foliage; for this reason it is a valuable acquisition as a shade tree.

ITS YIELD—No cherry can equal the Lambert with its tremendous crops of delicious fruit.

THE FRUIT—The Lambert Cherry to eat will give your palate a new sensation. The flesh is firm, crisp, and deliciously rich, with juice that has a delightful tang all its own. When fully ripe it is unusually large and of a dark lustrous purple color.

NAPOLEON—A rich, delicious variety; large red cherry that hangs well on the tree. Very popular. It is tender, and one of those famous varieties that has made Cherry growing popular. Clear red in color. June.

YELLOW SPANISH—A magnificent heart-shaped Cherry of the largest size, pale yellow, richly dotted and spotted with deep red. Flesh very firm, juicy and sweet; a rapid grower and immense bearer; best for canning, preserving and shipping. July.

Sour Cherries for Pies and Canning

EARLY RICHMOND—Everywhere the most popular. Tree strong thrifty grower; fruit medium size, dark red, melting, juicy; sprightly acid flavor; especially valuable for cooking purposes; early and abundant bearer. Season, last of May and first of June.

LARGE MONTMORENCY—An old favorite. Large; bright, clear, shining red; flesh solid, juicy, rich, acid; tree prolific bearer and very hardy.

We have a limited number of fine, healthy, early-to-bear trees, well branched and rooted, of above five varieties, 6 to 8 feet in height, \$3.00 each; \$30.00 per dozen.

Newbark

PLASTIC TREE SAVER

A natural tree salve, an antiseptic plastic preparation quickly applied to protect all wounds of bark or limb. It kills and keeps out insects, fungus disease germs and prevents disfigurement, decay and death of trees. A torn or broken limb, a small patch of bark ripped off by lawn mower, plow or carelessness, may be a place for rot producing fungi to lodge and eventually may mean the death of a valuable tree. With the use of Newbark, injuries and decay may be stopped very economically.

Write for free booklet, "How to Quickly Renew the Life of Wounded and Decayed Trees."

The cost of Newbark is only \$2.00 for a 5-lb. can; 10-lb. can \$3.00; 25-lb. can \$6.00. Delivered anywhere East of Mississippi River. Full instructions for applying on each can.



Seckels—bring back memories of long ago

Pears

LARGE SPECIMEN TREES 6 TO 8 FEET



IF you want fresh, juicy fruit and want it now, and in sufficient quantity to give it a place on the family bill of fare, plant some of these magnificent Bearing Age Fruit Trees which we are offering to our patrons this spring; trees which are really a horticultural achievement. Each tree has been grown, cultivated and pruned for a specimen. All of the trees run from *six to eight feet* in height; symmetrically branched, heavily rooted—trees that will save you seasons of waiting for pears of delicious flavor. *If you want Big Fruit Trees for quick results, Order Today.*

Summer Varieties

BARTLETT—No pear of the same season equals the Bartlett in flavor, either for eating or canning. Has first place in all markets and brings top prices. Fruit large and yellow, fine grained, buttery and juicy. Sweet, rich flavor. Tree is hardy, grows very rapidly and bears young and heavily. Carefully cultivated and sprayed trees will produce enormous crops of perfect fruit. Season September. Origin, Berkshire, England. Introduced in United States by Enoch Bartlett of Boston, Mass.

CLAPP'S FAVORITE — Large, fine; pale lemon-yellow, with red cheek; fine texture, melting, buttery, juicy, with a rich, sweet delicate vinous flavor. Tree hardy and very productive. Thrives where other varieties fail.

Autumn Varieties

ANJOU—This is one of the best known, most popular and profitable late pears. The tree is a vigorous grower, hardy and prolific. The pears are of large size, green in color, but often yellow when thoroughly ripe. They are very juicy and luscious and of the best quality. For late fall and very early winter use, we have no better variety. Oct. to Jan.

DUCHESS D'ANGOULEME—A most dependable cropper, often fruiting the first season after planting. Fruit large, frequently weighing a pound. A dull greenish yellow, spotted russet, flesh white, rich and good quality. An all round profitable market pear. Oct. and Nov.

SECKEL—A beautiful and delicious little Pear that is the standard of excellence in its class. One of the richest and highest flavored Pears known, always in demand for desserts and luncheons and better known than any Pear of its class. The tree makes a somewhat slow but stout and erect growth. Sept. and Oct.

Splendid early-to-bear trees, the choicest in our nurseries, heavily rooted, beautifully branched, \$3.00 each; \$30.00 per dozen.

Le Conte Bearing Pear Trees

We have a limited quantity of some big bearing trees of the Le Conte variety of pear. This is an exceedingly large pear, smooth, pale yellow, quality good, juicy and pleasant. The pear is remarkably vigorous, healthy and free from blight. It is an extremely prolific bearer. These trees have already borne fruit in the Nursery row. These big trees run about 8 to 10 feet in height, beautifully branched, heavily rooted.

Price, \$5.00 each; \$50.00 per dozen.



Bradshaws—the answer to little Jack Horner

Plums

SELECT EARLY-TO-BEAR TREES

*What we've Said about our Pear Trees applies to these
Plums — special trees — every one for those
who desire quick results*



European Plums

BRADSHAW—A very large and fine early plum, dark violet red, juicy and good. Trees erect and vigorous; very productive; valuable for market. The quality is excellent, and it is destined to become one of the most popular of all plums for canning, while its attractive color, good quality and shipping properties will cause it to be sought for as a market variety. It ripens ten days to two weeks later than Abundance.

LOMBARD—Medium to large, roundish, oval, dark red, flesh yellow, juicy and pleasant flavor; hardy, popular, nearly always producing a crop, a valuable commercial sort. August.

SHIPPER'S PRIDE — Large and handsome, dark purple; quality fine, juicy and sweet; excellent for canning. September.

SHROPSHIRE DAMSON — Large, amber color, juicy and sprightly; most desirable of the Damson class; productive and not liable to rot; good commercial sort. September.

IMPERIAL GAGE—Rather large; oval; greenish; flesh juicy, rich and delicious, parts from the stone. Tree a vigorous grower; very productive and one of the best plums. Middle of August.

Japanese Plums

ABUNDANCE—Fruit large, showy, beautiful. Amber, turning to a rich, bright, cherry color, with a decided white bloom, and highly perfumed. Flesh light yellow, exceedingly juicy and tender, of a delicious sweetness impossible to describe. Stone small and parts readily from flesh. For canning it is of greatest excellence. Its season is very early, ripening in advance of other plums, thus adding to its special value.

RED JUNE—The best Japan plum, ripening before Abundance. Medium to large; deep vermilion-red, with handsome bloom; flesh light lemon-yellow, firm, moderately juicy; fine quality. Tree upright, spreading vigorous and hardy; productive.

*Extra Select Specimens — 6 to 8 feet — the finest in our
Nurseries. Beautifully branched, heavily rooted —
\$3.00 each, \$30.00 per dozen.*



Crab Apples—make the most delicious jelly



They look appetizing, don't they?—and "homey." They add a lot to the meal, and somehow they're so much better put up at home, from your own fruit trees—like these.

Bearing Trees Crab Apples

FOR CIDER AND JELLY

FOR making Cider, Jellies and Preserving, the Crab Apple is unequalled among fruits. The Crabs are especially noted for their great hardiness and vigor, growing well and producing heavy annual crops under almost any condition and in practically any location. They come into bearing unusually early—generally the second year. The great beauty

of the Crab Apple tree in blossom is an added advantage, which makes it very attractive for yard planting, the tree being a mass of fragrant flowers in the spring.

We offer two splendid varieties, as follows:
TRANSCENDENT—Bright red, immensely productive, early.
HYSLOP—Large, deep crimson, late variety.

*Price, extra fine five year old trees, 7 to 10 feet,
\$3.00 each, \$30.00 per dozen.*

Quinces

DELICIOUS BAKED QUINCES. Grown in your own yard. A space 10 x 10 is plenty for a quince tree. Absolutely hardy and needs little or no care and attention. There is, therefore, no reason in the world for not growing bushels and bushels of the finest quinces you ever ate. We recommend the Orange variety, which is bright, orange-yellow in color, nearly round in form and of highest quality and is best for the home garden. We heartily recommend it to our patrons.

*Strong, three year trees, symmetrically branched, beautifully rooted, which will bear the second and third year after planting,
\$2.00 each, \$20.00 per dozen.*

The Nectarine

There is a mistaken idea that the Nectarine is a cross between the Peach and something else, while it is really nothing more or less than a smooth-skinned Peach. The trees bear fully as well as the Peach, and for canning, drying and shipping it has so many points in its favor it is difficult indeed to comprehend why planters have not engaged in Nectarine culture more extensively than they have. Professor Bailey, in *Cyclopedia of American Horticulture*, on page 1064, says: "Nectar-

ines thrive wherever Peaches do." As the Nectarine had identically the same habit as the Peach, the cultural directions are the same.

RED ROMAN—This variety is particularly recommended for home planting. The fruit is very firm and keeps as well as a peach. It has a delicious flavor, being rich in sugar, tender and juicy.

Strong, well branched trees, 4 to 6 feet, \$2.00 each, \$20.00 per dozen.

Apricots

Fresh apricots and apricot preserves are a treat to all and a few trees should be included in all home orchards and gardens.

The apricot is also an extremely ornamental tree with its dark green luxuriant heart-shaped leaves and magnificent white blossoms.

We offer the Early Moorpark variety, one of the English sorts and one of the best varieties to grow in the East because of its extreme earliness. The tree is vigorous, hardy, healthy and productive, fruit very early, rather small of lemon yellow color, flecked and dotted with bright reddish orange, fruit juicy, sweet and rich, of the best quality, Stone free from flesh.

*Extra nice two year old trees
\$2.00 each, \$20.00 per dozen.*

Mayo Nurseries, Inc., Rochester, N. Y.

March 12, 1923.

Gentlemen:

Last year I bought some excellent apple trees from you but to date I have received no catalog for your apple trees this year. Please send me your catalog at once.

(Signed) Richard M. Marble,
Woodstock, Vermont.



*Hubbard—a hardy American variety with the
exquisite flavor of the European sorts.*

Bearing Grape Vines



WE are exceedingly fortunate in being able to offer to our patrons this Spring a limited quantity of extra fine Bearing Grape Vines, for immediate results. Planting these vines, with their heavy root systems and fruiting canes three to six feet long, saves you two years of waiting. We offer the above vines in the three following varieties, ideal for the home garden.

LUCILLE—Red. The Lucille is one of the most beautiful of the red or amber grapes, the bunches being very large and the berries double the size of the Delaware. The pulp is sweet and delicious with a tangy flavor all its own.

EMPIRE STATE—White. Empire State, compared with Niagara, is as vigorous, as free from insects and fungi, as productive. In two characteristics, Empire State surpasses Niagara. Far better in quality and may be kept longer; in quality, Empire State ranks among the best native grapes, approaching in flavor

European Muscats rather than the foxiness of native grapes.

HUBBARD—Blue. The quality of the Hubbard is sweet and delicious with that fine rich flavor hitherto exclusive of the Vinifera Grapes. Skin thin and very firm; a very tender pulp. Berries and bunch are large and uniform. Ripens ten days earlier than Concord. We have examined practically every American variety of Grape and found no equal in size, flavor and texture.

The Hubbard Grape is a rich blue in color—a heavy bearer—early to come into bearing—superb for the home table.

Heavy bearing vines with fruiting spurs, heavily rooted, \$3.00 each; \$30.00 per dozen. Order today, as our stock is very limited.

Each vine has its roots balled in moss to insure absolute safety in transportation

Mayo Nurseries, Rochester, N. Y.

Gentlemen:

I herewith enclose bill of \$11.25 together with check for that amount in payment thereof.

The plants arrived in due course and were set out promptly, and with the ideal weather conditions we have had for the few days since then I believe they will all make a good start. I would like to say at this time that I have never received a shipment of plants that were apparently packed as carefully, and received in such perfect condition or which had such a wonderful root growth and which were so entirely satisfactory and beyond expectations in every respect, especially the grape vines, which seem to have the most wonderful roots I had ever seen on plants shipped for transplanting.

I wish to further express my appreciation for your methods of handling so small and unimportant an order as mine and your courtesies in the entire matter.

Very truly yours,

(Signed) R. S. Smith,
Attorney at Law,
Twin Falls, Idaho.

December 22, 1925.

Mayo Nurseries, Inc., Rochester, N. Y.

Gentlemen:

I beg to inform you that the grape vine (Hubbard) that I bought from you about two years ago, produced about thirty pounds of grapes this fall.

(Signed) P. O. Mundt,
Mount Vernon, N. Y.



Tree Currant—a charming solitaire for your garden

Specimen Tree Currants

BEARING TREES—SOMETHING NEW



WHY not plant a charming little tree currant in place of a shrub or dwarf tree and each year pick quarts of delicious juicy fruit for preserves and jelly instead of "just leaves?"

While the tree currant is a new introduction to this country, it is extremely desirable and useful both on account of its great beauty and tremendous crops. As can be seen from the accompanying illustration, each tree bears great clusters of the highest quality of fruit, and, being off the ground, not only makes it easy to pick and handle, but also keeps the fruit clean and fresh.

Furthermore, the tree currant makes a most charming appearance in your garden or about your grounds. These little trees are used

extensively in England and France but the lack of stock has prevented their planting in the United States. We are fortunate in being able to offer to our customers for this spring only a limited quantity of beautiful tree currants. These are all of the Perfection variety which is the best for jelly and preserving. This variety bears enormous crops of the most delicious fruit. We hope that each of our patrons will try out a few of these charming little trees some place about their grounds. Their beauty, charm and utility will return a great deal of pleasure and satisfaction for the effort expended in planting.

If planted this Spring these specimen Tree Currants will produce fruit next Summer.

These trees stand about 3 to 4 feet high, branched and well rooted, \$3.00 each; \$30.00 per dozen.

Each tree has its roots balled in moss to insure absolute safety in transportation.

Specimen Tree Gooseberries

Bearing plants — first time offered — only a limited quantity available this spring — order today

IN connection with our sale of tree currants the last three years, we have had a great many requests for tree gooseberries. Three years ago we started a planting and this Spring we will have some beautiful specimen tree gooseberries to offer for the first time. The tree gooseberry is common in English landscapes, but practically unknown in this country, owing to the lack of stock. We believe this is the first time they have ever been offered for sale. Each tree gooseberry bears great clusters of the highest quality of fruit, and being off the ground not only makes it easy to pick and handle, but also keeps the fruit clean and fresh. The tree gooseberry also makes a charming appearance in the garden or about your grounds, being extremely ornamental and will advantageously take the place of a shrub or dwarf tree so that each year you can pick quarts of delicious, juicy

fruit for preserves and jelly instead of "just leaves." The gooseberries that we are offering are all of the Poorman variety, which is very productive and not susceptible to mildew. The fruit measures over an inch in length and almost one inch through, oval, pinkish-red when ripe, quality excellent, considered the best of the sixty-two varieties grown at the New York State Experimental Station, which in itself is highest recommendation.

We hope that each of our patrons will try out a few of these charming little trees some place about their grounds. Their beauty, charm and utility will return a great deal of pleasure and satisfaction for the effort expended in planting. If planted this Spring, these specimen tree gooseberries, which have already produced fruit in the Nursery row, will produce an abundance of fruit next Summer.

These trees are 3 to 4 feet in height, branched and well rooted, \$3.00 each, \$30.00 per dozen.

Each tree has its roots balled in moss to insure absolute safety in transportation.



Blowers Big Blackberries are all that the name implies

Blowers Big Blackberries

BIGGEST AND BEST OF ALL BLACKBERRIES



RECORD—14 ft. and 1 in. extreme height of bush. 2694 berries on one bush. 2720 quarts from one third acre.

ON SEVEN ACRES—30,206 quarts; 45,307 lbs.; 934 $\frac{1}{8}$ bushels; 22 $\frac{2}{3}$ tons, \$2,121.75.

NET F.O.B. HERE—\$303.10 average per acre. 153 bushels netted \$344.25 from best acre.

THE QUALITY—Its sprightly, yet moderate acid taste, is indicative of the presence of those valuable medicinal properties without which the blackberry is worthless. A large, clean, bright berry. The fruit is exceedingly sweet, with no perceptible core when fully developed. The flavor is pleasant without being peculiar. In fact, it is a blackberry from root to tip. It is a first-class shipper, standing up well for several days. Its marvelous size and splendid flavor have called forth the following comments by those who have observed it. "We are surprised to see the mammoth growth of bush and berry." "Most splendid fruit as to size, color and quantity that ever grew on blackberry bushes." "The berries are large and hand-

some and the flavor good." You can only appreciate the fruit by seeing our "berry orchard" in fruiting.

HARDINESS—Plant Blowers Blackberries anywhere you would grow Concord grapes.

DISTANCE APART TO PLANT—Rows 8 ft. apart, 3 ft. in row. This takes about 1800 plants to the acre.

TRAINING—Some people are successful with no trellis, but for convenience and to insure against damage by high winds, this support is preferable. Posts about 5 ft. long, cross-arms 15 to 20 inches. Grape wire stapled at each end of this cross-arm and running both sides of the row. No tying is necessary. This gives a chance to cultivate thoroughly and often.

SEASON OF FRUITING—The season of ripening is from July 25th until frost; the bulk of the crop matures in the month of August. The yield in September and October depends upon the season; very few in October. We have had blossoms and ripe fruit in November.

We offer extra fine two-year-old transplants, which will produce next summer. Price, \$3.00 per dozen; \$20.00 per hundred; \$150.00 per thousand.

Alfred—The New Coreless Blackberry

MAMMOTH IN SIZE — EXCELLENT IN FLAVOR WONDERFUL IN PRODUCTIVENESS

Here are the five cardinal reasons for planting the Alfred Coreless Blackberry in your garden:

First. Bears the first season. Alfred is such a hardy vigorous grower that it produces fruit the first season planted. It is not at all unusual to pick 40 to 50 berries from one of our plants the same year planted.

Second. Immense size. The berries are twice as large as the Eldorado, many of them 1 $\frac{1}{2}$ to 1 $\frac{3}{4}$ in. long. They are glossy jet black in appearance and hold their color after being picked.

Third. Magnificent quality. The Alfred is the finest flavor of all blackberries. It is an

ideal table berry because it is coreless, sweet and delicious.

Fourth. Extremely hardy. The Alfred can be grown anywhere without winter protection, having withstood thirty degrees below zero and not a single tip of the branches injured while other varieties were frozen to the ground.

Fifth. Early season. This is a big feature of the Alfred. It ripens ten days earlier than the Eldorado and in productiveness is in a class by itself, covering an unusually long season. We have seen ripe berries, green berries and blossoms on the Alfred all at the same time.

Price, heavy transplants for immediate results, \$5.00 per dozen, \$40.00 per hundred.



LaFrance—marvelous in flavor, size and color

La France Giant Everbearing Red Raspberry



BIG, rich, sweet, juicy berries from July until November. Awarded first class certificate of merit by the Massachusetts Horticultural Society, New York Horticultural Society, New York Florist Club, Horticultural Society of Nassau County, Horticultural Society of Westchester County, Tarrytown and many others. This is truly a remarkable record.

The bushes of this remarkable raspberry are rapid, vigorous growers, often reaching a height of nine feet. The canes are strong and erect, frequently an inch or more in diameter with fewer spines or thorns than any other raspberry. This makes berry picking comfortable. The canes branch freely adding greatly to their productivity.

LaFrance is a prodigious bearer throughout the season, from late June until all vegetation is killed by frost.

The berries are firm, twice the size of other raspberries, wonderfully delicious in flavor, the size of the berry and its flavor are the same from first to last. The late crops, when raspberries are scarce and therefore highly priced, are heavier than the earlier ones.

THE FRUIT. The fruit is borne on racemes, one to three feet long in large clusters and the same racemes show the unusual sight of buds, blooms, fruit just setting, green berries and ripened fruit. This condition continues throughout the entire season.

A raspberry is really made up of a bunch of miniature berries, technically called "drupes"; each "drupe" contains a seed. The "drupes" of the LaFrance Red Raspberries are more than three times the size of those in such favorites as the Cuthbert and the berry contains less than half as many "drupes"; therefore, contains fewer seeds than all other berries.

The LaFrance is all "meat"; not all seeds.

LaFrance Red Raspberry fruits early in July the first season planted, continuing throughout the growing season; after being established they will bear as early as June and as late as November last and later, so long as heavy frost has not killed all vegetation.

LaFrance is free from insects and diseases and multiplies rapidly; while in the East and other parts of this country it reproduced itself tenfold in one season, in the State of Washington it has reproduced itself twenty-fold.

LaFrance is perfectly hardy and has been thoroughly and successfully tested in various parts of the country.

In the Northwest, the great berry growing section of America, growers are most enthusiastic over LaFrance and are planting it heavily.

Splendid, well rooted plants, extra fine tops, which will bear berries next summer, if planted this Spring.

Price, \$4.00 per dozen; \$30.00 per hundred.



A Dish of Golden Queen for breakfast—no sugar needed



Mary Washington — A new variety—thoroughly tested

Golden Queen

THE MOST DELICIOUS OF ALL YELLOW RASPBERRIES

Finest for the home garden Give your palate a new sensation



FOR those who have never tasted a Yellow Raspberry, the Golden Queen will be a delightful surprise, with its delicious, melting flesh, full of creamy juice. It is an ideal variety for the home garden.

It is a beautiful berry in appearance, being of the largest size, and a beautiful golden orange color. It is a vigorous growing plant, hardy and extremely productive. This is not a new variety, but one that has been thoroughly tested out, and we cannot say too much in its favor. For a table berry it has no superior. It is a seedling from the splendid Cuthbert, and is to the Yellow Raspberry what the Erskine Park is to the Red.

We have some splendid bearing plants with fine heavy stalks excellently rooted, real specimens, that will produce berries for you next summer.

*Price, \$5.00 per dozen, \$40.00 per hundred. Golden Queen
are extremely scarce this spring*

Pedigreed Mary Washington Asparagus

A NEW VARIETY — THOROUGHLY TESTED

*The best high producing, tender, green
Asparagus for market and home use*

THERE is no variety of asparagus as good as the Washington and no strain of the Washington to be compared with the "Mary." The female "Mary" Washington asparagus like the original male Washington is the greatest find in the history of asparagus breeding. It is earlier, produces more asparagus, has larger and more tender stalks, and possesses higher rust resistance than any other variety. Mary Washington asparagus is recognized as the best and we are pleased to announce that we can now offer you selected roots grown from the seed of this asparagus, produced from a fine field of second generation Mary Washington. Mary is so much better that it will probably displace most of the other varieties now grown in the garden.

*We have a limited quantity of beautiful, two-year-old roots,
pedigreed stock only, which we can offer for this Spring at the
following prices, \$12.00 per hundred,
fifty plants at the hundred rate.*



Neverfail—the heart of the shortcake

Mayo Nurseries, Inc., Rochester, N. Y.

Gentlemen:

My order of peach, apple and cherry trees are in fine shape. The berry bushes were excellent and it seems we ought to get asparagus from such splendid crowns and roots.

Thanking you for your promptness and the splendid condition due to careful packing of order, I am

Cordially yours,

(Signed) Mrs. W. L. Rous,
869 Seventh St., Buffalo, N. Y.

Neverfail

THE NEW FALL OR EVERBEARING STRAWBERRY



THIS famous strawberry offered for the first time to our customers this spring we consider surpasses all other Everbearing Strawberries in every way. It is the Strawberry without a fault combining the best qualities of the two varieties which were formerly best, Progressive and Superb, being a better plant than the Progressive and the berries not only as large but better flavored than the Superb. Furthermore, *it is four times as productive as a fall fruiter.*

No one ever hoped to find a better everbearer than the Superb, but here we have it, and we consider this berry will be the Strawberry of the future, especially for the states north of Maryland, all through the northern part of the country.

The color is medium dark red, juicy, firm, tender, very aromatic, best to very best in quality, a good, vigorous grower, and one of the hardiest. *When you bite into it you know you are eating a strawberry.*

We cannot recommend this berry too highly to customers, and feel that a dozen or a hundred plants would be a great acquisition to absolutely every garden, no matter what varieties are now growing. The plants will be properly packed in moss and shipped by parcel post, prepaid, to any address east of the Rockies, in late April or early May.

To get the best results with Neverfail strawberry, make the soil rich and give frequent cultivatings and hoeings. Trim off all the blossoms until July 1st. Then let them blossom and set fruit and the crop of fruit in August, September and October will be simply marvelous. It fruits on the young runners as well as the old plants.

*Heavy field grown plants, \$5.00 per fifty; \$8.00 per hundred;
\$60.00 per thousand.*

Mayo Nursery, Inc.,
Rochester, N. Y.

New York City, Nov. 6, 1922.

Gentlemen:

Last season you supplied me through your New York City representative a small but satisfactory order of fruit trees.

Will you kindly ship me per express at once two standard apples, bearing age, the best you can supply.

These trees you list at \$5.00 each and judging by the samples are ever so much better and superior to early bearing trees usually offered by others.

Yours very truly,

(Signed) John D. Knickman,
Nurseryman and Florist,
East Northport, L. I., N. Y.



Cultural Directions

Blueberries require an acid soil to produce the best results. This is prevalent in many sections of the country. Where your soil is not acid, we suggest the following method to get the most from your plants. Choose a well-drained location, easily supplied by water during the dry summer months. Blueberries do best with full sun, although they will grow and produce fruit in partial shade. In order to get the proper acid condition to your soil, mix partly rotted leaves with the soil of your garden. A heavy mulch each fall of partly rotted leaves will maintain the acidity of the soil. Do not remove this mulch, but let it remain throughout the year. Another easy method to obtain acidity to the soil is to obtain partly rotted sawdust or wood chips. This makes excellent material and produces an acid condition very beneficial to the plants. Acid fertilizers can be used if the above two methods are not possible. The Department of Agriculture recommends as the best chemical fertilizer aluminum sulphate, which is an effective and inexpensive method of changing neutral soil to acid, half a pound per plant may be advantageously applied. Never use manure or compost near a blueberry plant. No pruning is necessary except as a branch may become damaged or stop bearing. Water your plants well the first year, soaking the ground two or three feet away from the roots. For this, the plants will thank you, we will thank you and finally you will thank yourself.



View showing some of our nursery-grown Blueberries. Insert: One of the plants—Note the root system holding this ball of earth—in the nursery row —and already fruiting!

Old Fashioned Blueberries

YES, old-fashioned blueberries—just like Dad had on his old farm down East. You can't buy berries like these—you must grow them yourself—saving you time, labor and disappointment, if you get the real Nursery-grown blueberry plants.

The blueberry is among the finest of fruits, in fact, the very finest of all berries for pies. It is almost unknown in the average garden. This is due largely to the scarcity of Nursery grown plants, the only kind that transplant easily. Blueberries bear the first or second season after planting, in fact, most of the plants we offer have set fruit in the Nursery row.

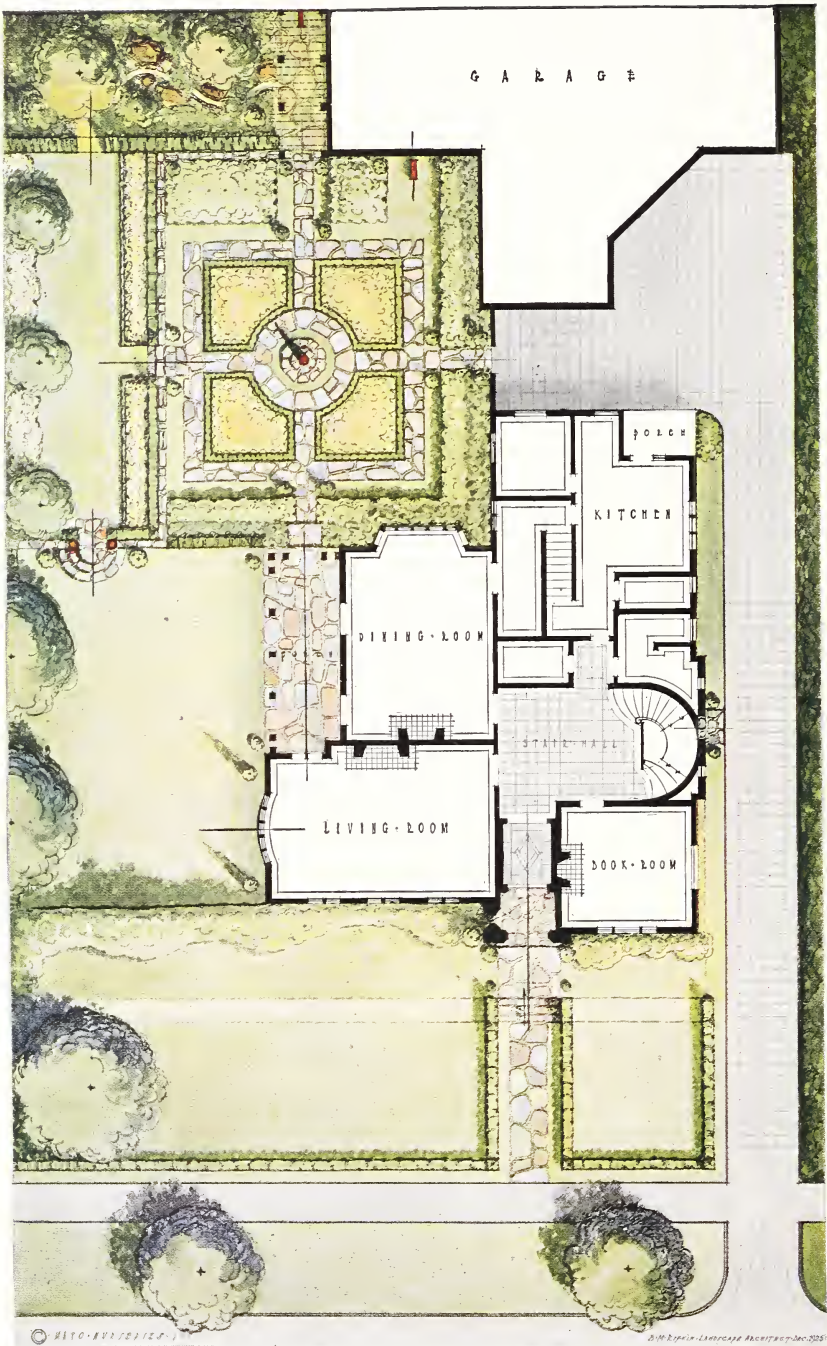
Blueberry pie, blueberries in cream, blueberry preserves. The thought of these makes the mouth water and yet they are within your reach in an ever increasing quantity. It is almost impossible to find a description of the blueberry's flavor. The blueberry is in a class by itself, with its delicious melting flesh, full of rich creamy juice and a delicate wild tang all its own.

In the autumn the blueberry is of great ornamental value, the foliage being more brilliant than practically any other shrub and their red twigs brighten up the winter landscape.

Our blueberries are the famous New England type, grown in the heart of the Berkshire Hills, where winter temperatures of thirty to forty degrees below zero occur, and their hardiness is unquestioned. This is an important point to take into consideration in buying blueberries. We do not sell hybrid blueberries, ours are the New England "just blueberries." producing fruit such as most of our patrons have had an opportunity to taste at some time or other in blueberry pie, once eaten, never forgotten, and leaving a great desire to grow them in your own garden.

All our blueberries have been transplanted and hence have excellent root systems. Each plant is dug with earth attached to roots and a ball of earth sewed in burlap in order to eliminate risk in transplanting. Plant blueberries four feet apart.

We have some extra fine Nursery grown plants; beautifully rooted, balled and burlapped, \$1.50 each; \$15.00 per dozen; \$100.00 per hundred.



Design for a small English garden in a select residential district at 75 Douglas Road, Rochester, New York. Plans, construction, garden architecture, and entire planting executed by the Mayo Landscape Service.

The Mayo Landscape Service



CREATING pictures with evergreens, flowering shrubs and plants is the only adequate description which can be given the highly developed and experienced service of our Landscape Designers. In the creation of such effects, we not only aim to develop that peculiar charm which will best express a natural beauty and make it harmonious with the house, the grounds, and the surroundings—but especially to create those beautiful landscape pictures which will fascinate throughout the entire year.

While builders of new homes are conscious of the need to engage architects in the development of beautiful designs, it is unfortunate to observe the very large number of instances where the possibilities of an exterior setting of an otherwise carefully designed and attractive house have been entirely ignored, or the grounds have been planted in a *Hit and Miss* style. To individuals possessing good taste the sight of a charming English cottage, set in a wealth of crimson cannas, edged with equally crimson scarlet sage, must not only be ludicrous, but painful as well.

To make possible the preparation of a landscape design which would catch the proper spirit of the architectural style of the house, and translate it, together with its surroundings into a charming landscape composition, was the very definite purpose given to the selection and organization of the personnel behind the Mayo Landscape Service.

We offer no stereotyped plans—each problem must express your own desires and your own individuality. Mayo Landscape plans are prepared complete in every detail from surveys, which include the grading plans for lawns and terraces, drainage, location and grouping of buildings, designs for entrance gates, drives, masonry construction, architectural details for pergolas, garden gates, tea houses, and garden furnishings. Special types of gardens such as rock gardens, rose gardens, formal Italian gardens, as well as woodland and bridle paths, artificial lakes, waterfalls, garden pools and grottos, can be made to fit into some appropriate place in the landscape scheme:—whatever you desire we can help you to its fulfillment.

Since we are primarily nurserymen interested in the sale of trees and plants, and not in the sale of landscape designs, we are in a position to offer the services of our Landscape Designers and Engineers without cost to our clients, in the connection with the planting of our plant material.

It is known that some persons become discouraged at the prospect of having complete landscape plans prepared for the entire property, when it is intended to develop only a small portion of the grounds at a time,—but the point is to have the complete plan prepared, then you can carry out as much or as little planting as you wish each season, yet feel fully assured and enjoy the satisfaction that whatever planting you do will be done properly and as a part of an entire scheme. Only in following such a plan can you save yourself the constant disappointments in effect and in outlay, as well as the necessity of continually transplanting trees and shrubs, which is bound to result where no definite plan serves as a guide.

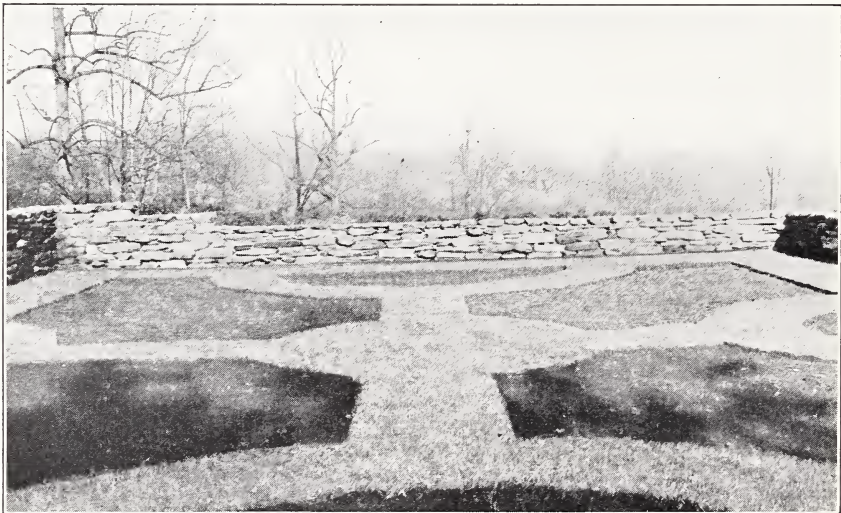


A creative development at Greenwich, Conn., Nov. 1925, executed in its entirety — plans, planting, flagstone walks—by the Mayo Landscape Service.

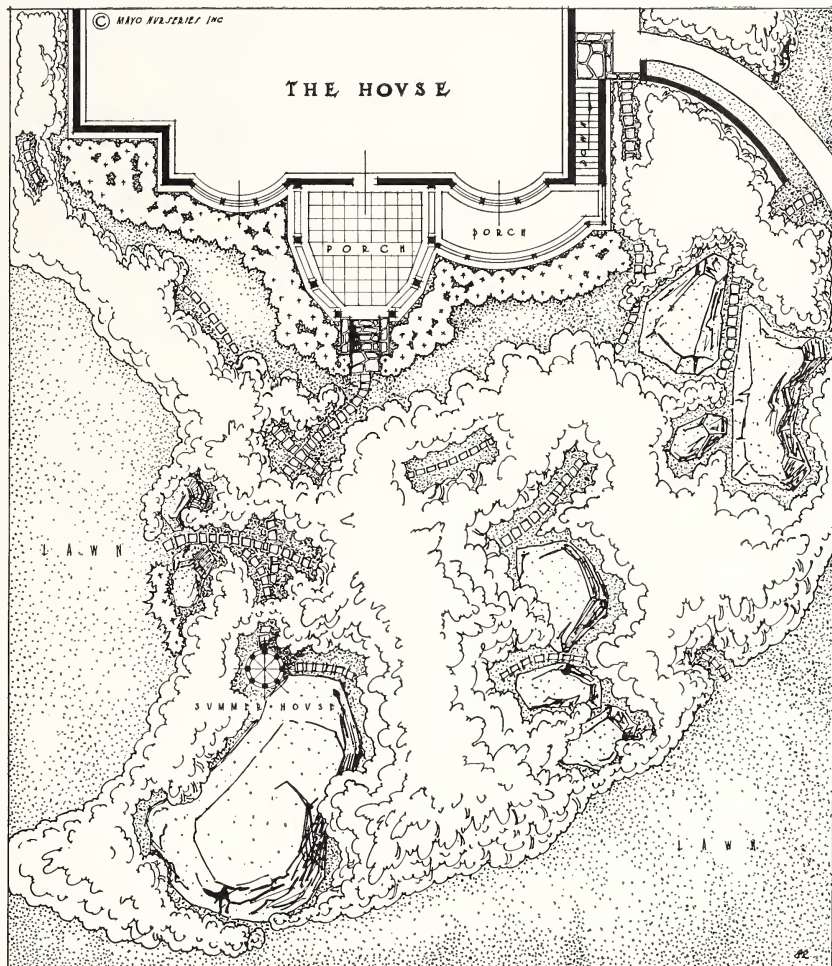
If you are planning to build, or are considering the renovation of your present house, or some property which you have just acquired, we will gladly make it a part of our service to collaborate with your architect in securing the proper location for your house with relation to the sun, to interesting vistas, as well as locating the drives and walks.

Large estates or small country homes—no problem too big, no job too small for our most painstaking service.

We have discontinued the preparation of our usual mail-order catalogue of ornamental plants, since we are confining the growing of all of our trees,



Formal sunken garden on an estate at Media, Penna. Stone walls and garden designed and executed by the Mayo Landscape Service.



Plan of the hillside rock garden, at Belle Haven, Greenwich, Conn. (Photograph of completed planting and walk construction shown on preceding page.) Garden planned and constructed by the Mayo Landscape Service.

shrubs, evergreens and perennials, as specimens for quick results in connection with our LANDSCAPE DEPARTMENT. Our Evergreens, our Rhododendrons, our Ornamental Trees, our Flowering Shrubs, and our Perennials and Roses, are the finest plants that can be grown or secured anywhere, and it is for this reason that we are able to guarantee our stock against loss for one year after planting, where the work is carried out under the supervision of our planting experts.

The accompanying plans and illustrations suggest not only naturalistic plantings, which were designed and executed by us, but show as well the treatment of modest formal gardens in connection with English country houses, in both of which styles we specialize.

An Additional Service

We can also furnish trained labor and equipment under expert supervision, thus relieving clients of every care incident to the planting and execution of any phase of the work. We have found this service very popular with our clients, as we are able to quote on the complete cost of the work from the time the plants leave our Nurseries until every part of the landscape plan has been completely executed. Our Landscape Designers are always very happy to meet with prospective clients at their convenience, preferably on the property which is to be improved. Only through the advantage of such a visit can our Landscape Designers secure the proper estimate of the possibilities of the property, and discuss intelligently and in detail with owners the impressions which have been gotten. Your ideas and your needs are necessary to supplement any impression of the property in order to insure you a pleasing and harmonious plan. Two or three hours spent right on the property will be certain to accomplish more towards an intelligent and expert solution of your problem than pages of correspondence.

Now is the time to arrange an interview for your Spring, Summer, or Fall work. Write, wire or 'phone us. Large or small, your inquiry will have the same courteous and faithful attention which has won for us a host of friends and customers throughout the country.

Orchard Department

In connection with our Landscape Service, we maintain an Orchard Department through which we will plan your orchard, supply the trees, and superintend their planting. If desired, we can furnish the labor in addition to the supervision, so that the planting of an orchard can be given the personal and careful attention of qualified orchard experts.

HOW LATE CAN YOU PLANT NURSERY STOCK?

This is the question that comes up every spring, during the month of April, after the first few warm days have come and made the buds swell. The important rule to remember in transplanting trees, shrubs and plants of all sorts is that the stock should be dormant. Dormant stock can be planted with safety throughout the United States and Canada even late in the spring, although, of course, the later one plants the shorter the growing season, but as long as the results are successful each planter should remember that he is gaining a year's growth over waiting until fall. We keep our stock dormant by special methods, until late in May, and as long as we accept orders, our customers may rely upon our making good any losses that arise in error of judgment on this point. Last year our stock was dormant and we shipped until the 10th of June.

TERMS

All shipments are F. O. B. Rochester and include packing. We are always glad to open accounts with persons or firms who desire to do business with us.

SPECIAL DISCOUNT APPLYING TO ALL PRICES IN THIS CATALOG

While our prices are F. O. B. Rochester, there are a large percentage of our customers who prefer to send cash with order. Where cash does accompany order we will allow you to deduct 10% of the amount of your order. This, in most cases, will cover the cost of transportation.

MAYO NURSERIES, INC.

Rochester, New York

"WORLD'S BEST TREES AND PLANTS FOR HOME GROUNDS"

Nurseries: Rochester, N. Y.

Executive Office: Ellwanger & Barry Bldg., Rochester, N. Y.