

1 2 3 4 5 6 7 8 9 10 11 12 3 4 5

始



秘

# 森林治水試驗地氣象年表

第二十六號

昭和十三年

農林省林業試驗場

METEOROLOGICAL OBSERVATIONS

IN THE

FOREST HYDROLOGICAL STATIONS

FOR

THE YEAR 1938

PUBLISHED BY THE FORESTRY EXPERIMENTAL STATION

MINISTRY OF AGRICULTURE AND FORESTRY

MEGURO TOKYO JAPAN

1939

森林治水試驗地氣象年表  
第二十六號 正誤表

頁	項	目	誤	正
18	三月六日	降水量	0.0	—
21	年	風ノ回數 NNE	37	36
"	"	" NE	15	16
25	十二月	氣溫平均較差	7.9	7.9
26	四月十五日	蒸發量	不明瞭	(0.6)
37	二月	最大一時間量ノ日	18	19
41	五月	降水量 10—10 <sup>b</sup> (自記)	177.8	178.0
"	九月	" "	169.3	169.4
"	年	雜叢日數 雨	17.8	17.9
42	一月四日	日照時數	不明瞭	2.06
49	十二月	降水量 10—10 <sup>b</sup> (自記)	153.1	153.3
"	年	" "	1700.5	1700.7

凡 例

本年表ハ昭和十三年中霧島外十二箇所ノ森林治水試験地ニ於テ施行シタル氣象觀測ノ成績ヲ編纂シタルモノナリ

觀測ノ時刻及方法ハ各地皆一定ノ式ニ據ル其ノ要點ヲ擧クレハ

時刻ハ中央標準時即チ東經百三十五度ノ地ノ平時ニ據リ、夜半ヲ日限トスル二十四時制ヲ用フ

氣象觀測ハ七時、十四時、二十一時ハ三回ヲ觀測定時トス、但シ地温ノ1.2米以上ノ深サノモノハ十四時一回、又蒸發量ハ七時二十一時ノ二回ニ之ヲ行フ

治水試験地ニ於テ使用スル器械中、氣壓ハ山岳用水銀晴雨計、氣温、濕度ハ「フース」型乾濕計及同型最高及最低寒暖計ニ依リ、別ニ「リシャール」製自記器ヲ備ヘ、風速ハ「ロビンソン」型風力計ニ自記器ヲ裝置セルモノ、風向ハ自記風信器ニ據リ、日照時數ハ「ジョルダン」式日照計ヲ用ヒ、地温ハ鐵管式寒暖計ヲ使用ス(但シ積雪期間中ハ鐵管ヲ指定ノ深サニ水平ニ埋メ、之ニ寒暖計ヲ挿入シテ觀測セル所アリ)

氣象表中各要素ノ記載方ニ就キ大要ヲ記スレハ

氣壓ハ耗ヲ以テ示シ、晴雨計示度ニ温度ノ更正ノミヲ施シタルモノヲ掲ケ、其ノ平均值ハ定時三回實測ノ平均值ヲ掲ク

氣温及地温ハ攝氏ノ度ヲ以テ示シ、氷點以下ノ度數ハ之ヲ百ヨリ減シ其ノ餘數ヲ以テ示ス、例ヘハ氷點以下五度ハ九十五度ト記スルカ如シ、氣温ノ平均值ハ氣壓ト同シク定時三回實測ノ平均值、地温ハ0.3米ニ限リ定時三回實測ノ平均值、其ノ他ハ十四時一回實測シタルモノヲ掲ク

氣温ノ最高及最低ハ最高及最低寒暖計ノ示度ニシテ、二十一時ニ讀取リ復度スルモノトス

濕度ハ空氣中ニ水蒸氣ヲ含マサルヲ零トシ、飽和ニ達セルヲ百トシテ比例ヲ以テ示ス、其ノ平均值ハ氣温ト同様定時三回實測ノ平均值ヲ掲ク

水蒸氣張力ハ耗ヲ以テ示シ、其ノ平均值ハ三回實測ノ平均值ヲ掲ク

降水量及蒸發量ハ耗ヲ以テ示シ、毎日ノ量ハ前日二十一時ヨリ當日二十一時ニ至ルモノ、蒸發量月表中露天蒸發量缺測ノ日ハ日陰蒸發量( )ヲ附シテ掲ク

風速度ハ一秒間米ヲ以テ表シ、二十一時限界ニヨル二十四時間全程ノ平均數ヲ示ス、最大風速度ハ實測並臨時觀測ニ據ル但シ風速ハ總テ正時前二十分間ノ平均トス

風ノ方向ハ十六方位ヲ用ヒ、實測ニ依ル一日三回ノ統計數ヲ掲ク

雲量ハ雲全クナキヲ零、全ク天ヲ覆ヘルヲ十トスル比例ヲ以テ示シ、其ノ平均值ハ三回ノ實測ニ依ル平均雲量ニ未滿ナル日ヲ快晴トシ、同8以上ノ日ヲ曇天トス、一日中日照全ク無カリシ日ヲ不照トス

電雷日數ハ電光又ハ微弱ナル雷鳴ノミノモノヲ省キタル日數ヲ掲ク

霧、露日數ハ微弱ナルモノヲ省キタル日數ヲ掲ク

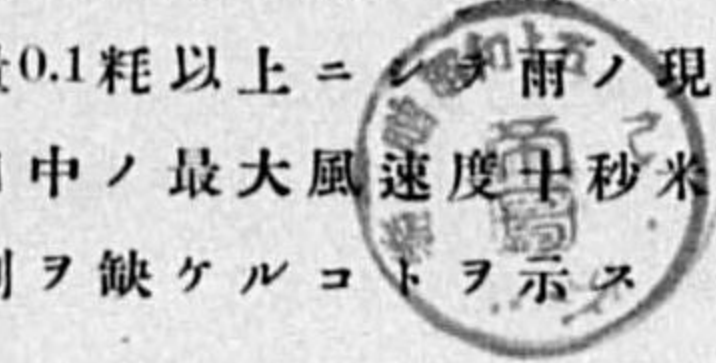
雪、霜、霜柱日數等ハ濃淡ヲ問ハズ現象アリタル日數ヲ掲ク

雨日數ハ降水量0.1耗以上ニシテ雨ノ現象アリタル日數トス

暴風日數ハ一日中ノ最大風速度十秒米以上ニ達シタル日數トス

表中×印ハ觀測ヲ缺ケルコトヲ示ス

發行所寄贈本



Explanation

This meteorological table is the result of the meteorological observations made at the 12 Forest Hydrological Stations for the year 1938.

As to the time and method of observation for these stations, it is summarized as follows:—  
The central standard time of Japanese Empire, i. e., the mean time for the longitude of 135° east of Greenwich is used and it is reckoned to 24 hours from the midnight, omitting the separation of A. M. and P. M., The times for the routine observation are 7<sup>h</sup>, 14<sup>h</sup>, and 21<sup>h</sup>; the earth temperature for the depth of 1.2 metres or more is observed at 14<sup>h</sup> and the evaporation of water at 7<sup>h</sup> and 21<sup>h</sup>.

Besides the direct observations taken thrice daily, the selfrecording instruments are equipped for important elements such as the pressure, temperature, humidity of air, the direction and speed of wind and precipitation.

For the sunshine, Jordan's recorder is used and for the observation of the earth temperature, an iron tube is buried vertically up to the nominated depth and the thermometer is hanged within it. At some places, the earth temperatures are observed for the season of lying snow by the thermometers inserted into the iron tubes buried horizontally at nominated depths.

As to the statistics, the followings are to be remarked:—

*Air Pressure* is given by m.m. of the mercury column and it is reduced only to 0°C; the daily mean is calculated from the direct observations.

*Air Temperature* and *Earth Temperature* are given by the degree of centigrade and readings below freezing point are given by numbers subtracted from 100 to avoid (—) sign; thus 95 stand for —5. The daily mean is calculated from the direct observations.

*Relative Humidity* is expressed by percentage to saturation; the daily mean is also taken from direct observations.

*Tension of Vapour* is given by m.m. of mercury column; the mean is taken from the direct observations.

*Precipitation* and *Evaporation* are expressed by m.m.; the daily amounts of them are those for 24 hours ending 21<sup>h</sup> of the date. And for the missing of observations of free exposure evaporation in the monthly results, the shade evaporation is inserted with ( ).

*Wind velocity* is expressed by metres per second; the mean velocity for a day is calculated from the total course for 24 hours ending at 21<sup>h</sup> and the *Maximum velocity* for a month is taken from the selfrecorder and it is calculated from readings for 20 minutes preceding every exact hour.

The *Direction of Wind* is taken according to the 16 cardinal points and its statistics are made from the direct observations.

The *Amount of Cloud* is given by the scale 0-10; the mean is taken from the tri-daily observations. The day on which the mean amount of cloud is less than 2 exclusive is taken as *Clear* and that on which the mean is greater than 8 inclusive as *Cloudy*.

When the sunshine recorder traces no sunshine, the day is counted to *Sunless*.

For the days with *Thunder*, the lightning only or slight thunder is omitted.

For the days with *Fog* and *Dew*, slight ones are omitted.

For the days with *Snow*, *Hoar frost*, *Ice column*, *e.t.c.* they are counted disregarding the intensities of phenomena.

For the days with *Rain*, such days on which the amount of precipitation exceeds 0.1 m.m. inclusive and the precipitation falls, partially at least, in the form of rain, are taken.

When the velocity of wind exceeds 10<sup>m</sup>/sec, it is counted to *Gale*.

ILLUSTRATION OF SYMBOLS

- ✖ Snow
- ☁ Fog
- + Snow drift
- ⚡ Thunder storm
- ⚡ Ice column in ground
- ⊠ Hoar frost
- ⊠ Hail
- ⊠ Snow lying
- ☃ Ice in water pot
- ⚡ Gale
- △ Graupel
- ☁ Dew

14.0 = 1.38

昭和十三年氣象一覽表  
SUMMARY OF THE YEAR 1938

所名 Stations	氣溫 Air Temperature			風 Wind			降水量 Precipitation		濕度 Relative Humidity		日照時數 Hours with Sunshine		平均 量 Mean Am.	平均 量 Mean Am.
	平均 Mean	高極 Max.	低極 Min.	平均 Mean 21-21h	最大 Max.	方向 Dir.	全年 Annual	最大日量 Max. in 24h	平均 Mean	最小 Min.	總計 Total	百分率 %		
霧島 Kirisima	13.6	31.7	92.8	2.3	21.2	NE	3107.1	177.0	77.1	27	2244.00	51	5.9	2.9
矢嶽 Yatake	13.0	32.4	91.3	1.4	6.9	SSE	2962.0	230.9	79.1	23	1939.18	44	6.5	3.3
小國 Oguni	12.3	33.3	89.1	1.4	8.9	N	2198.7	138.2	81.5	20	1613.96	36	6.4	3.3
本山 Motoyama	13.2	33.6	92.4	1.0	8.1	W	3011.0	261.0	78.1	25	1968.35	45	7.2	2.5
高島 Takasima	13.8	35.3	93.3	2.2	11.4	ENE	1267.1	74.0	80.4	30	2270.96	51	6.0	2.3
智頭 Tizu	12.8	33.6	88.9	1.7	11.7	NNW	2037.7	111.5	78.6	26	1851.67	42	7.2	3.0
勝山 Katuyama	12.8	34.7	89.0	1.2	12.4	SE	2905.6	112.7	80.7	22	1623.70	37	7.4	3.4
十日町 Tōkamati	11.2	33.7	89.7	1.3	11.2	S	2741.4	123.3	82.5	24	1636.45	37	7.9	3.2
白河 Sirakawa	10.9	32.9	86.5	2.2	12.1	N	1791.9	124.7	75.7	28	1766.01	40	7.5	3.0
沼尻 Numajiri	7.9	30.3	83.6	1.8	10.5	WNW	2278.8	229.1	81.4	24	1614.64	36	7.5	2.9
釜淵 Kamabuti	9.6	34.4	83.8	1.3	10.7	SW	2510.2	94.1	81.3	18	1643.12	37	7.7	2.8
好摩 Kōma	8.9	32.6	75.4	2.6	11.5	SW	1368.9	92.9	75.2	16	1920.97	43	7.1	3.1
鷹巢 Takanosu	9.7	33.8	82.7	2.0	15.3	W	1956.5	109.3	80.1	26	1689.35	38	7.8	3.2

所名 Stations	雜象日數 Number of Days With										季節 Season (1937-1938)	
	降水 Precip.	快晴 Clear	曇天 Cloudy	不照 Sunless	暴風 Storm	電雷 Thunder	雹 Hail	霧 Fog	雪 Snow	霜 Frost	初雪日 First Snow	終雪日 Last Snow
霧島 Kirisima	173	64	130	64	16	10	—	47	20	24	年 月 日 1937 Ⅺ 19	月 日 Ⅱ 22
矢嶽 Yatake	175	50	168	54	—	10	1	30	21	65	1937 Ⅺ 4	Ⅱ 22
小國 Oguni	157	41	147	63	—	9	1	61	32	80	1937 Ⅺ 2	Ⅲ 15
本山 Motoyama	164	26	182	38	—	5	1	190	30	47	1937 Ⅺ 3	Ⅲ 15
高島 Takasima	135	45	123	33	2	3	—	10	31	82	1937 Ⅺ 4	Ⅱ 25
智頭 Tizu	213	18	182	35	2	13	—	34	57	73	1937 Ⅺ 3	Ⅲ 15
勝山 Katuyama	218	26	193	74	2	14	2	16	67	61	1937 Ⅺ 26	Ⅲ 15
十日町 Tōkamati	252	22	230	76	1	24	1	12	84	40	1937 Ⅺ 20	Ⅳ 9
白河 Sirakawa	173	20	208	64	2	12	1	33	59	59	1937 Ⅺ 22	Ⅳ 11
沼尻 Numajiri	253	20	210	53	2	11	1	31	115	58	1937 Ⅺ 8	Ⅳ 16
釜淵 Kamabuti	256	21	221	62	1	17	2	14	109	50	—	Ⅳ 16
好摩 Kōma	204	14	171	42	9	8	1	19	87	106	—	Ⅳ 16
鷹巢 Takanosu	233	15	225	60	10	10	—	61	101	55	—	Ⅳ 9



氣象月表 MONTHLY RESULTS OF OBSERVATIONS

昭和十三年 1938

所名 霧島 STATION KIRISIMA

Table with columns for Day, Air Temperature (Mean, Max, Min, Range), Mean Rel. Humidity, Precipitation, Evaporation, Hours with Sunshine, and Mean Wind Velocity. Includes monthly and daily data for January, February, March, and April.

氣象月表 MONTHLY RESULTS OF OBSERVATIONS

昭和十三年 1938

所名 霧島 STATION KIRISIMA

Table with columns for Day, Air Temperature (Mean, Max, Min, Range), Mean Rel. Humidity, Precipitation, Evaporation, Hours with Sunshine, and Mean Wind Velocity. Includes monthly and daily data for May, June, July, and August.

氣象月表 MONTHLY RESULTS OF OBSERVATIONS

昭和十三年 1938

所名 霧島 STATION KIRISIMA

Table with columns for Day, Air Temperature (Mean, Max, Min, Range), Humidity, Precipitation, Evaporation, Sunshine, and Wind. Includes monthly and annual summaries for September, October, and November.

十一月 NOVEMBER

Table for November 1938, showing daily weather observations including temperature, humidity, precipitation, and wind.

十二月 DECEMBER

Table for December 1938, showing daily weather observations including temperature, humidity, precipitation, and wind.

氣象年表 ANNUAL RESULTS OF OBSERVATIONS

昭和十三年 1938

所名 矢野 STATION YATAKE

Summary table for Yatake station 1938, including monthly and annual averages for air temperature, humidity, precipitation, evaporation, and sunshine.

Table for precipitation and evaporation at Yatake station, including frequency of precipitation separated by amount and time of day.

Table for wind at Yatake station, including monthly and annual frequency by direction and velocity.

Table for number of days with various weather conditions at Yatake station, including fog, snow, and rain.

キ有感地震回数 Frequency of felt earthquake

氣象月表 MONTHLY RESULTS OF OBSERVATIONS

昭和十三年 1938

所名 矢 嶽 STATION YATAKE

Table for January and February observations. Columns include Day, Air Temperature (Mean, Max, Min, Range), Mean Relative Humidity, Precipitation, Evaporation, Sunshine, Hours with Sunshine, and Mean Wind Velocity.

Table for March and April observations. Columns include Day, Air Temperature (Mean, Max, Min, Range), Mean Relative Humidity, Precipitation, Evaporation, Sunshine, Hours with Sunshine, and Mean Wind Velocity.

氣象月表 MONTHLY RESULTS OF OBSERVATIONS

昭和十三年 1938

所名 矢 嶽 STATION YATAKE

Table for May and June observations. Columns include Day, Air Temperature (Mean, Max, Min, Range), Mean Relative Humidity, Precipitation, Evaporation, Sunshine, Hours with Sunshine, and Mean Wind Velocity.

Table for July and August observations. Columns include Day, Air Temperature (Mean, Max, Min, Range), Mean Relative Humidity, Precipitation, Evaporation, Sunshine, Hours with Sunshine, and Mean Wind Velocity.



氣象月表

MONTHLY RESULTS OF OBSERVATIONS

昭和十三年 1938

所名 矢 嶽 STATION YATAKE

Table with columns for Day (日), Air Temperature (氣溫), Humidity (濕度), Precipitation (降水), Evaporation (蒸發), Sunshine (日照), and Wind (風). It includes monthly and annual averages for September, October, November, and December.

氣象年表

ANNUAL RESULTS OF OBSERVATIONS

昭和十三年 1938

所名 小 國 STATION OGUNI

Table with columns for Month (月), Air Temperature (氣溫), Humidity (濕度), Earth Temperature (地溫), Sunshine (日照), Wind (風), and Precipitation (降水). It includes monthly and annual averages for various meteorological parameters.

有感地震回数 Frequency of felt earthquake

氣象月表 MONTHLY RESULTS OF OBSERVATIONS

昭和十三年 1938

所名 小 國 STATION OGUNI

Table with columns for Day (日), Air Temperature (氣 溫), Humidity (濕 度), Precipitation (降 水), Evaporation (蒸 發), Sunshine (日 照), and Wind (平 均 風 速). Rows are organized by month: JANUARY, FEBRUARY, MARCH, APRIL, MAY, JUNE, JULY, AUGUST.

氣象月表 MONTHLY RESULTS OF OBSERVATIONS

昭和十三年 1938

所名 小 國 STATION OGUNI

Table with columns for Day (日), Air Temperature (氣 溫), Humidity (濕 度), Precipitation (降 水), Evaporation (蒸 發), Sunshine (日 照), and Wind (平 均 風 速). Rows are organized by month: MAY, JUNE, JULY, AUGUST.

氣象月表 MONTHLY RESULTS OF OBSERVATIONS

昭和十三年 1938

所名小國 STATION OGUNI

Table with columns for Air Temperature, Humidity, Precipitation, Evaporation, Sunshine, and Wind. Includes monthly and annual averages for 1938.

氣象年表 ANNUAL RESULTS OF OBSERVATIONS

昭和十三年 1938

所名木山 STATION MOTOYAMA

Table with columns for Air Temperature, Humidity, Precipitation, Evaporation, Sunshine, Wind, and other meteorological data. Includes monthly and annual averages for 1938.

キ有感地震回数 Frequency of felt earthquake

氣象月表 MONTHLY RESULTS OF OBSERVATIONS

所名 本 山 STATION MOTOYAMA

昭和十三年 1938

Table with columns for Day, Air Temperature (Mean, Max, Min, Range), Mean Rel. Humidity, Precipitation, Evaporation, Hours with Sunshine, and Mean Wind Velocity. Includes monthly and yearly summaries for January, February, March, and April.

Table with columns for Day, Air Temperature (Mean, Max, Min, Range), Mean Rel. Humidity, Precipitation, Evaporation, Hours with Sunshine, and Mean Wind Velocity. Includes monthly and yearly summaries for May, June, July, and August.

氣象月表 MONTHLY RESULTS OF OBSERVATIONS

所名 本 山 STATION MOTOYAMA

昭和十三年 1938

Table with columns for Day, Air Temperature (Mean, Max, Min, Range), Mean Rel. Humidity, Precipitation, Evaporation, Hours with Sunshine, and Mean Wind Velocity. Includes monthly and yearly summaries for May, June, July, and August.

Table with columns for Day, Air Temperature (Mean, Max, Min, Range), Mean Rel. Humidity, Precipitation, Evaporation, Hours with Sunshine, and Mean Wind Velocity. Includes monthly and yearly summaries for May, June, July, and August.

氣象月表 MONTHLY RESULTS OF OBSERVATIONS

昭和十三年 1938

所名 本山 STATION MOTUYAMA

Table with columns for month, day, air temperature (mean, max, min, range), humidity, precipitation, evaporation, sunshine, and wind. Includes sub-sections for September, October, and November.

氣象年表 ANNUAL RESULTS OF OBSERVATIONS

昭和十三年 1938

所名 高島 STATION TAKASIMA

Table with columns for month, air temperature, humidity, precipitation, evaporation, sunshine, wind, and seasonal statistics. Includes sub-sections for precipitation types, wind frequency, and number of days with various weather conditions.

有感地震回数 Frequency of felt earthquake

氣象月表 MONTHLY RESULTS OF OBSERVATIONS

昭和十三年 1938

所名 高島 STATION TAKASIMA

Table with columns for Day, Air Temperature (Mean, Max, Min, Range), Humidity, Precipitation, Evaporation, Sunshine, and Wind. Includes monthly totals for January, February, March, and April.

Table with columns for Day, Air Temperature (Mean, Max, Min, Range), Humidity, Precipitation, Evaporation, Sunshine, and Wind. Includes monthly totals for May, June, July, and August.

氣象月表 MONTHLY RESULTS OF OBSERVATIONS

昭和十三年 1938

所名 高島 STATION TAKASIMA

Table with columns for Day, Air Temperature (Mean, Max, Min, Range), Humidity, Precipitation, Evaporation, Sunshine, and Wind. Includes monthly totals for May, June, July, and August.

Table with columns for Day, Air Temperature (Mean, Max, Min, Range), Humidity, Precipitation, Evaporation, Sunshine, and Wind. Includes monthly totals for May, June, July, and August.

氣象月表 MONTHLY RESULTS OF OBSERVATIONS

昭和十三年 1938

所名 高島 STATION TAKASIMA

Table with columns for Day, Air Temperature (Mean, Max, Min, Range), Humidity, Precipitation, Evaporation, Sunshine, and Wind. Includes monthly and annual summaries for September, October, and November.

十一月 NOVEMBER

Table for November 1938, showing daily observations for air temperature, humidity, precipitation, evaporation, sunshine, and wind.

十二月 DECEMBER

Table for December 1938, showing daily observations for air temperature, humidity, precipitation, evaporation, sunshine, and wind.

氣象年表 ANNUAL RESULTS OF OBSERVATIONS

昭和十三年 1938

所名 智頭 STATION TIZU

Table for TIZU station showing annual and monthly averages for air temperature, earth temperature, humidity, precipitation, evaporation, and sunshine.

Table for TIZU station showing monthly precipitation amounts and frequency of precipitation separated by amount and duration.

Table for TIZU station showing monthly wind velocity and frequency by direction.

Table for TIZU station showing the number of days with various weather phenomena (fog, snow, rain, etc.) and seasonal extremes.

キ有感地震回数 Frequency of felt earthquake

氣象月表 MONTHLY RESULTS OF OBSERVATIONS

昭和十三年 1938

所名 智頭 STATION TIZU

Table for January and February 1938. Columns include Day, Air Temperature (Mean, Max, Min, Range), Humidity, Precipitation, Evaporation, Sunshine, and Wind. Rows are listed for each day from 1 to 31, with monthly totals at the bottom.

Table for March and April 1938. Columns include Day, Air Temperature (Mean, Max, Min, Range), Humidity, Precipitation, Evaporation, Sunshine, and Wind. Rows are listed for each day from 1 to 31, with monthly totals at the bottom.

氣象月表 MONTHLY RESULTS OF OBSERVATIONS

昭和十三年 1938

所名 智頭 STATION TIZU

Table for May and June 1938. Columns include Day, Air Temperature (Mean, Max, Min, Range), Humidity, Precipitation, Evaporation, Sunshine, and Wind. Rows are listed for each day from 1 to 31, with monthly totals at the bottom.

Table for July and August 1938. Columns include Day, Air Temperature (Mean, Max, Min, Range), Humidity, Precipitation, Evaporation, Sunshine, and Wind. Rows are listed for each day from 1 to 31, with monthly totals at the bottom.



氣象月表

MONTHLY RESULTS OF OBSERVATIONS

昭和十三年 1938

所名 智頭 STATION TIZU

Table with columns for Day, Air Temperature (Mean, Max, Min, Range), Humidity, Precipitation, Evaporation, Sunshine, and Wind. Includes monthly and annual summaries for September, October, November, and December.

氣象年表

ANNUAL RESULTS OF OBSERVATIONS

昭和十三年 1938

所名 勝山 STATION KATUYAMA

Annual summary table for Katuyama station, including monthly and yearly data for Air Temperature, Earth Temperature, Sunshine, Precipitation, Evaporation, and Wind. Includes seasonal statistics and a calendar of days with weather conditions.

キ有感地震回数 Frequency of felt earthquake

氣象月表

MONTHLY RESULTS OF OBSERVATIONS

昭和十三年 1938

所名 勝山 STATION KATUYAMA

Table for January and February 1938. Columns include Day, Air Temperature (Mean, Max, Min, Range), Humidity, Precipitation, Evaporation, Sunshine, and Wind. Rows are numbered 1-31 for each month.

三月 MARCH

四月 APRIL

Table for March and April 1938. Columns include Day, Air Temperature (Mean, Max, Min, Range), Humidity, Precipitation, Evaporation, Sunshine, and Wind. Rows are numbered 1-31 for each month.

氣象月表

MONTHLY RESULTS OF OBSERVATIONS

昭和十三年 1938

所名 勝山 STATION KATUYAMA

Table for May and June 1938. Columns include Day, Air Temperature (Mean, Max, Min, Range), Humidity, Precipitation, Evaporation, Sunshine, and Wind. Rows are numbered 1-31 for each month.

七月 JULY

八月 AUGUST

Table for July and August 1938. Columns include Day, Air Temperature (Mean, Max, Min, Range), Humidity, Precipitation, Evaporation, Sunshine, and Wind. Rows are numbered 1-31 for each month.

氣象月表 MONTHLY RESULTS OF OBSERVATIONS

昭和十三年 1938

所名 勝山 STATION KATUYAMA

Table with columns for Air Temperature, Humidity, Precipitation, Sunshine, and Wind. Includes monthly and daily data for September, October, and November.

Table for December (十二月) with columns for Air Temperature, Humidity, Precipitation, Sunshine, and Wind. Includes monthly and daily data.

氣象年表 ANNUAL RESULTS OF OBSERVATIONS

昭和十三年 1938

所名 十日町 STATION TOKAMATI

Summary table for 1938 with columns for Air Temperature, Humidity, Precipitation, Sunshine, and Wind. Includes monthly and annual averages.

Table for Amount of Precipitation (降水量) with columns for Total, Daily Max, and Frequency of Precipitation.

Table for Wind (風) with columns for Velocity and Frequency by direction.

Table for Number of Days with various weather conditions (雜象日數) and seasonal data.

キ有感地震回数 地震ノ( )ヲ附セルハ横式鐵管ヲ使用セルモノナリ

氣象月表 MONTHLY RESULTS OF OBSERVATIONS

昭和十三年 1938

所名 十日町 STATION TOKAMATI

Table with columns for Day (日), Air Temperature (氣溫), Humidity (濕度), Precipitation (降水量), Evaporation (蒸發量), Sunshine (日照時數), and Wind (平均風速). It is divided into four months: JANUARY, FEBRUARY, MARCH, and APRIL.

氣象月表 MONTHLY RESULTS OF OBSERVATIONS

昭和十三年 1938

所名 十日町 STATION TOKAMATI

Table with columns for Day (日), Air Temperature (氣溫), Humidity (濕度), Precipitation (降水量), Evaporation (蒸發量), Sunshine (日照時數), and Wind (平均風速). It is divided into four months: MAY, JUNE, JULY, and AUGUST.

氣象月表 MONTHLY RESULTS OF OBSERVATIONS

昭和十三年 1938

所名 十日町 STATION TOKAMATI

Table with columns for Day (日), Air Temperature (氣溫), Humidity (濕度), Precipitation (降水量), Evaporation (蒸發量), Sunshine (日照時數), and Wind (平均風速). It includes monthly data for September and October.

Table with columns for Day (日), Air Temperature (氣溫), Humidity (濕度), Precipitation (降水量), Evaporation (蒸發量), Sunshine (日照時數), and Wind (平均風速). It includes monthly data for November and December.

氣象年表 ANNUAL RESULTS OF OBSERVATIONS

昭和十三年 1938

所名 白河 STATION SIRAKAWA

Summary table for the year 1938, showing annual averages for Air Temperature, Earth Temperature (at 0.3m, 1.2m, 3.0m depths), Humidity, Precipitation, Evaporation, Sunshine, and Wind.

Table detailing precipitation (降水量) and frequency of precipitation (降水回數) by month, including categories like total amount, daily maximum, and frequency of different durations.

Table detailing wind (風) characteristics by month, including average velocity, frequency of wind from various directions (N, NNE, NE, etc.), and frequency of calm days.

Table detailing the number of days with various weather conditions (雜象日數) by month, including snow, rain, fog, and other atmospheric phenomena.

有感地震回數 Frequency of felt earthquake

氣象月表 MONTHLY RESULTS OF OBSERVATIONS

昭和十三年 1938

所名 白河 STATION SIRAKAWA

Table for January and February 1938. Columns include Day, Air Temperature (Mean, Max, Min, Range), Humidity, Precipitation, Evaporation, Sunshine, and Wind. Rows are numbered 1-31 for each month.

Table for March and April 1938. Columns include Day, Air Temperature (Mean, Max, Min, Range), Humidity, Precipitation, Evaporation, Sunshine, and Wind. Rows are numbered 1-31 for each month.

氣象月表 MONTHLY RESULTS OF OBSERVATIONS

昭和十三年 1938

所名 白河 STATION SIRAKAWA

Table for May and June 1938. Columns include Day, Air Temperature (Mean, Max, Min, Range), Humidity, Precipitation, Evaporation, Sunshine, and Wind. Rows are numbered 1-31 for each month.

Table for July and August 1938. Columns include Day, Air Temperature (Mean, Max, Min, Range), Humidity, Precipitation, Evaporation, Sunshine, and Wind. Rows are numbered 1-31 for each month.



氣象月表 MONTHLY RESULTS OF OBSERVATIONS

昭和十三年 1938

所名 白河 STATION SIRAKAWA

Table with columns for Day, Air Temperature (Mean, Max, Min, Range), Humidity, Wind, Sunshine, and Evaporation for September and October.

十一月 NOVEMBER

Table with columns for Day, Air Temperature, Humidity, Wind, Sunshine, and Evaporation for November.

十二月 DECEMBER

Table with columns for Day, Air Temperature, Humidity, Wind, Sunshine, and Evaporation for December.

氣象年表 ANNUAL RESULTS OF OBSERVATIONS

昭和十三年 1938

所名 沼尻 STATION NUMAJIRI

Table with columns for Month, Air Temperature, Humidity, Wind, Sunshine, and Evaporation for the year 1938.

Table with columns for Month, Amount of Precipitation, Frequency of Precip. Separated by Am., and Mean Am. of Evaporation.

Table with columns for Month, Wind Velocity, and Frequency for various directions.

Table with columns for Month, Number of Days with various weather conditions, and Seasonal data.

キ有感地震回数 Frequency of felt earthquake 地温ノ( )ヲ附セルハ横式観管ヲ使用セルモノナリ In the earth temperatures, figures with ( ) contain those obtained by the horizontal thermometers.

氣象月表 MONTHLY RESULTS OF OBSERVATIONS

昭和十三年 1938

所名 沼尻 STATION NUMAJIRI

Table for months January, February, and March. Columns include Day, Air Temperature (Mean, Max, Min, Range), Humidity, Precipitation, Evaporation, Sunshine, and Wind. Summary row for the month is provided at the bottom of each section.

三月 MARCH

四月 APRIL

Table for months April, May, and June. Columns include Day, Air Temperature (Mean, Max, Min, Range), Humidity, Precipitation, Evaporation, Sunshine, and Wind. Summary row for the month is provided at the bottom of each section.

五月 MAY

六月 JUNE

Table for months July and August. Columns include Day, Air Temperature (Mean, Max, Min, Range), Humidity, Precipitation, Evaporation, Sunshine, and Wind. Summary row for the month is provided at the bottom of each section.

氣象月表 MONTHLY RESULTS OF OBSERVATIONS

昭和十三年 1938

所名 沼尻 STATION NUMAJIRI

Table for months July and August. Columns include Day, Air Temperature (Mean, Max, Min, Range), Humidity, Precipitation, Evaporation, Sunshine, and Wind. Summary row for the month is provided at the bottom of each section.

七月 JULY

八月 AUGUST

Table for months July and August. Columns include Day, Air Temperature (Mean, Max, Min, Range), Humidity, Precipitation, Evaporation, Sunshine, and Wind. Summary row for the month is provided at the bottom of each section.

九月 SEPTEMBER

十月 OCTOBER

Table for months September and October. Columns include Day, Air Temperature (Mean, Max, Min, Range), Humidity, Precipitation, Evaporation, Sunshine, and Wind. Summary row for the month is provided at the bottom of each section.



氣象月表

MONTHLY RESULTS OF OBSERVATIONS

昭和十三年 1938

所名 沼尻 STATION NUMAJIRI

Table with columns for Day, Air Temperature (Mean, Max, Min, Range), Humidity, Precipitation, Evaporation, Sunshine, and Wind. Includes monthly and annual averages for 1938.

十一月 NOVEMBER

Table for November 1938, showing daily and monthly weather data for various parameters.

十二月 DECEMBER

Table for December 1938, showing daily and monthly weather data for various parameters.

氣象年表

ANNUAL RESULTS OF OBSERVATIONS

昭和十三年 1938

所名 釜淵 STATION KAMABUTI

Table with columns for Month, Air Temperature, Humidity, Earth Temperature (Depth), Sunshine, and Clouds. Includes monthly and annual averages for 1938.

Table with columns for Month, Amount of Precipitation, Frequency of Precip. Separated by AM., and Mean AM. of Evaporation. Includes monthly and annual averages for 1938.

Table with columns for Month, Wind Velocity, and Frequency. Includes monthly and annual averages for 1938.

Table with columns for Month, Number of Days with various weather conditions (Snow, Fog, etc.), and Seasonal data. Includes monthly and annual averages for 1938.

有感地震回数 Frequency of felt earthquake

氣象月表 MONTHLY RESULTS OF OBSERVATIONS

昭和十三年 1938

所名 釜淵 STATION KAMABUTI

Table with columns for Day, Air Temperature (Mean, Max, Min, Range), Humidity, Precipitation, Evaporation, Sunshine, and Wind. Includes monthly and yearly summaries for January, February, March, and April.

氣象月表 MONTHLY RESULTS OF OBSERVATIONS

昭和十三年 1938

所名 釜淵 STATION KAMABUTI

Table with columns for Day, Air Temperature (Mean, Max, Min, Range), Humidity, Precipitation, Evaporation, Sunshine, and Wind. Includes monthly and yearly summaries for May, June, July, and August.

氣象月表 MONTHLY RESULTS OF OBSERVATIONS

昭和十三年 1938

所名 釜淵 STATION KAMABUTI

Table with columns for Day, Air Temperature (Mean, Max, Min, Range), Mean Relative Humidity, Precipitation, Evaporation, Sunshine (Hours, Number of Days), and Wind (Mean Velocity, Hours with Gales). Includes monthly and annual summaries for September, October, November, and December.

Table with columns for Day, Air Temperature (Mean, Max, Min, Range), Mean Relative Humidity, Precipitation, Evaporation, Sunshine (Hours, Number of Days), and Wind (Mean Velocity, Hours with Gales). Includes monthly and annual summaries for November and December.

氣象年表 ANNUAL RESULTS OF OBSERVATIONS

昭和十三年 1938

所名 好摩 STATION KŌMA

Table with columns for Month, Air Temperature (Mean, Max, Min, Range), Mean Relative Humidity, Earth Temperature (Depth: 0.3m, 1.2m, 3.0m), Mean Am. of Cloud, Sunshine (Hours, Number of Days), and Wind (Mean Velocity, Hours with Gales). Includes monthly and annual summaries.

Table with columns for Month, Amount of Precipitation (Total, Daily Max, Hourly Max), Frequency of Precip. Separated by Am., Mean Am. of Evaporation (Free exposure, In shade), and Wind (Mean Velocity, Frequency). Includes monthly and annual summaries.

Table with columns for Month, Wind (Mean Velocity, Frequency by Direction: N, NNE, NE, ENE, E, ESE, SE, SSE, S, SSW, SW, WSW, W, WNW, NW, NNW, Calm). Includes monthly and annual summaries.

Table with columns for Month, Number of Days with various weather conditions (Snow, Fog, Rain, etc.), and Seasonal Summary (Season: 1937-1938). Includes monthly and annual summaries.

キ有感地震回数 Frequency of felt earthquake

氣象月表 MONTHLY RESULTS OF OBSERVATIONS

昭和十三年 1938

所名 好摩 STATION KŌMA

Table with columns for Day, Air Temperature (Mean, Max, Min, Range), Humidity, Precipitation, Evaporation, Sunshine, and Wind. Includes monthly and yearly summaries for January, February, and March.

三月 MARCH

四月 APRIL

Table with columns for Day, Air Temperature (Mean, Max, Min, Range), Humidity, Precipitation, Evaporation, Sunshine, and Wind. Includes monthly and yearly summaries for March, April, and May.

氣象月表 MONTHLY RESULTS OF OBSERVATIONS

昭和十三年 1938

所名 好摩 STATION KŌMA

Table with columns for Day, Air Temperature (Mean, Max, Min, Range), Humidity, Precipitation, Evaporation, Sunshine, and Wind. Includes monthly and yearly summaries for June, July, and August.

七月 JULY

八月 AUGUST

Table with columns for Day, Air Temperature (Mean, Max, Min, Range), Humidity, Precipitation, Evaporation, Sunshine, and Wind. Includes monthly and yearly summaries for July, August, and September.

氣象月表 MONTHLY RESULTS OF OBSERVATIONS

昭和十三年 1938

所名 好摩 STATION KOMA

Table with columns for Day (日), Air Temperature (氣溫), Humidity (濕度), Precipitation (降水量), Evaporation (蒸發量), Sunshine (日照), and Wind (風速). It includes monthly data for September, October, November, and December.

十一月 NOVEMBER

十二月 DECEMBER

Continuation of the monthly observation table for November and December, showing daily and monthly averages for various meteorological parameters.

氣象年表 ANNUAL RESULTS OF OBSERVATIONS

昭和十三年 1938

所名 鹿嶋 STATION TAKANOSU

Summary table for Takanosu station showing annual averages for Air Temperature, Earth Temperature, Humidity, Precipitation, Sunshine, and Wind.

Table detailing precipitation (降水量) and evaporation (蒸發量) data, including monthly totals and frequency of precipitation events.

Table detailing wind (風) data, including monthly frequency of winds from various directions and average velocities.

Table detailing the number of days with various weather phenomena (雜象日數), including fog, snow, and rain, along with seasonal statistics.

有感地震回数 Frequency of felt earthquake

氣象月表 MONTHLY RESULTS OF OBSERVATIONS

昭和十三年 1938

所名 鹿 巢 STATION TAKANOSU

Table for January and February 1938. Columns include Day, Air Temperature (Mean, Max, Min, Range), Humidity, Precipitation, Evaporation, Sunshine, and Wind Speed. Rows are numbered 1-31 for each month, followed by a monthly summary row.

三月 MARCH

四月 APRIL

Table for March and April 1938. Columns include Day, Air Temperature (Mean, Max, Min, Range), Humidity, Precipitation, Evaporation, Sunshine, and Wind Speed. Rows are numbered 1-31 for each month, followed by a monthly summary row.

氣象月表 MONTHLY RESULTS OF OBSERVATIONS

昭和十三年 1938

所名 鹿 巢 STATION TAKANOSU

Table for May and June 1938. Columns include Day, Air Temperature (Mean, Max, Min, Range), Humidity, Precipitation, Evaporation, Sunshine, and Wind Speed. Rows are numbered 1-31 for each month, followed by a monthly summary row.

七月 JULY

八月 AUGUST

Table for July and August 1938. Columns include Day, Air Temperature (Mean, Max, Min, Range), Humidity, Precipitation, Evaporation, Sunshine, and Wind Speed. Rows are numbered 1-31 for each month, followed by a monthly summary row.

氣象月表 MONTHLY RESULTS OF OBSERVATIONS

昭和十三年 1938

所名 鹿 巢 STATION TAKANOSU

Table with columns for Day, Air Temperature (Mean, Max, Min, Range), Humidity, Precipitation, Evaporation, Sunshine, and Wind. Rows are organized by month: 九月 (SEPTEMBER), 十月 (OCTOBER), 十一月 (NOVEMBER), and 十二月 (DECEMBER).

昭和十四年十一月二十八日印刷
昭和十四年十一月三十日發行

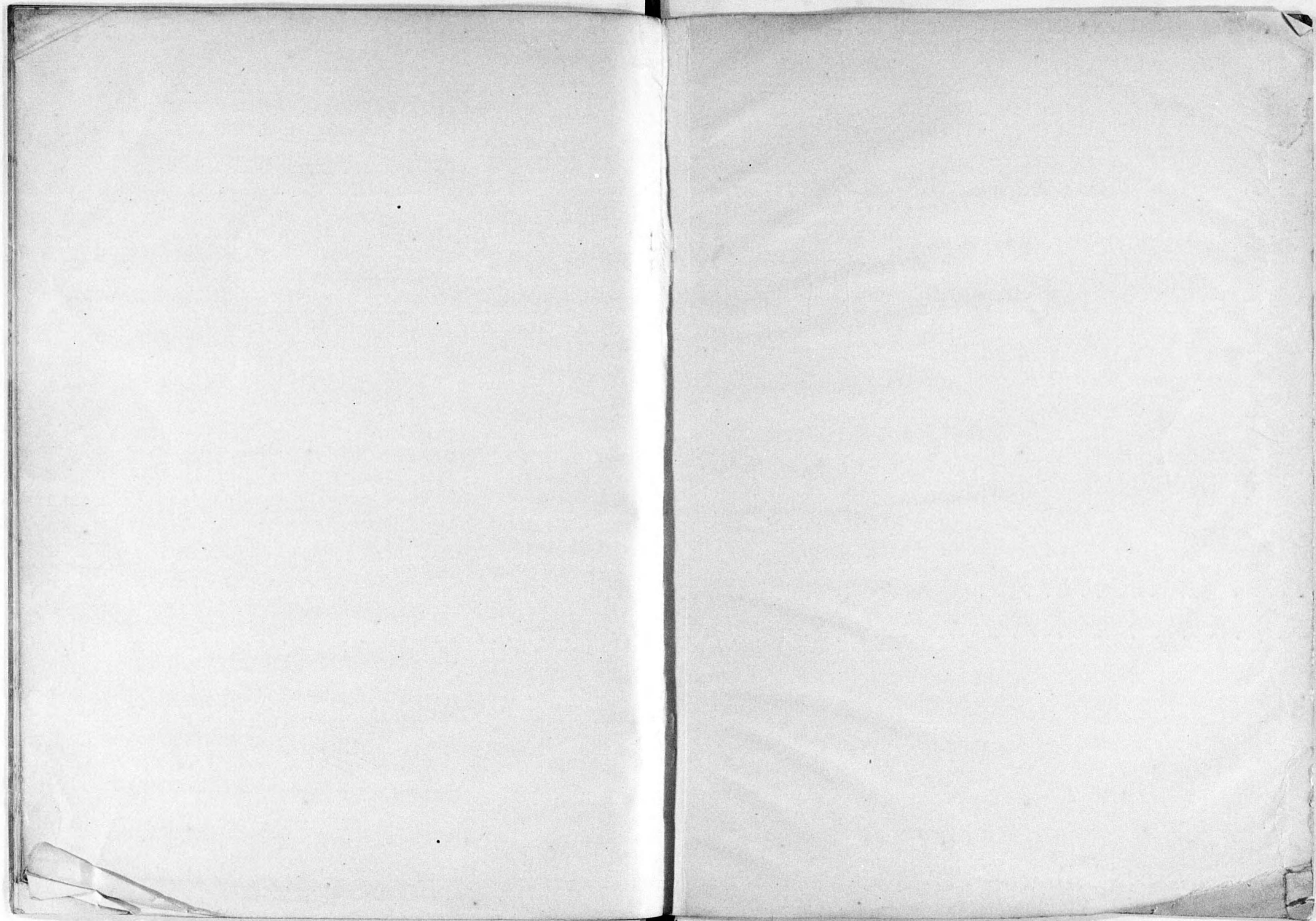
農 林 省 林 業 試 驗 場

印刷者 米 田 眞 二

印刷所 改 洋 社

東京市豊島區巢鴨一丁目三番地

東京市豊島區巢鴨一丁目三番地





14. 6二-138  
120050122562

14.6二  
138

終