

(Budget and Settlement)

Article 11. The budget for annual income and expenditure of this council shall be fixed prior to the starting of each fiscal year through resolution of the board of counsellors; the accounting settlement of annual income and expenditure shall be presented through review of inspectors, after the termination of the fiscal year, for confirmation of the board of counsellors, with the property inventory as of the end of the fiscal year.

(Special Account)

Article 12. This council may establish a special account through resolution of the board of counsellors.

(Fiscal Year)

Article 13. The fiscal year of this council shall commence, each year, on the first of April and end on the thirty-first of March.

Chapter 4: Organization

(Organization)

Article 14. This council shall be comprised of the following;

1. Public and private social welfare work institution and organization.
2. Social welfare volunteer such as minsei-iin (Jido-iin) or representative.
3. Gun, City Social Welfare Council.
4. Official concerned with the social welfare, and the learned and experienced.

Chapter 5: Staff

(Classification and Quorum of Staff)

Article 15. The following staff members shall be established in this council:

Chairman	1
Vice-chairman	Within 3
Standing Director	1
Director	Several
Inspector	Several
Counsellor	Several

(Nomination of Staff)

Article 16. The chairman, the vice-chairman shall be chosen from among directors by the board of counsellors.

2. The director and the insepctor shall be chosen from among members through resolution of the board of counsellors; provided that he shall not serve both as the director and inspector.

3. The chairman, if deemed necessary, may select the director and inspector from among those not coming under the preceding item within limitation of one-third of the fixed No. of directors, through resolution of the board of counsellors.

4. The ratio of diractors to be nominated from among members shall be as follows:

- (1)  $\frac{1}{4}$  ..... Those to be nominated from among members according to the qualification prescribed in Article 14, Item 2, No. 1.
- (2)  $\frac{1}{4}$  ..... Those to be nominated from among members according to the qualification prescribed in Article 14, Item 2, No. 2.
- (3)  $\frac{1}{4}$  ..... Those to be nominated from among members according to the qualification prescribed in Article 14, Item 2, No. 3.
- (4)  $\frac{1}{4}$  ..... Those to be nominated from among members according to the qualification prescribed in Article 14, Item 2, No. 4.

5. The standing director shall be chosen by mutual vote of directors; the chairman shall entrust him.

6. The counsellors shall be chosen from among members by the board of directors.

(Function of Staff)

Article 17. The chairman shall represent this council and control the council business.

2. The vice-chairman shall assist the chairman; and under an unavoidable circumstance, he shall delegate the chairman's function.

3. The standing director shall discharge the council business.

4. The directors shall organize the board of directors and execute the programs.

5. The insepctor shall execute the following functions;

- (1) To inspect the status of property belonging to this council.

- (2) To inspect the condition of business execution of directors.
- (3) To report to the board of counsellors or appropriate governmental agency when maladministration has been found in respect to the status of property or business execution.
- (4) To request the chairman to convoke the board of counsellors meeting when necessitated in order to make reports according to the preceding item.

6. The counsellors shall organize the board of counsellors and deliberate the other important matters.

(Tenure and Supplementation)

Article 18. The tenure of the staff member shall be two years, provided that he may be renominated.

2. The tenure of the staff member nominated to supplement a predecessor shall be the rest of the predecessor's tenure.

3. The staff member shall, even after the expiration of his tenure, continue his function until a successor takes his post.

(Advisor)

Article 19. The advisor may be placed in this council.

2. The advisor shall be entrusted by the chairman upon recommendation of the board of directors.

3. The advisor shall respond the chairman's inquiries in respect to the important matters.

#### Chapter 6: Meeting

(Classification of Meeting)

Article 20. Meetings shall be classified into two categories; the board of directors meeting and the board of counsellors meeting.

(Convokation)

Article 21. The chairman shall convoke and chair a meeting.

2. The chairman shall convoke a meeting when required by more than one-fifth of the staff members, counsellors or directors under joint signature with indication of the purport of the meeting.

(Session)

Article 22. The board of counsellors shall hold its regular meeting once a year, provided that the board may have a meeting upon necessary occasions.

2. The board of directors meeting shall be held upon necessary occasions.

(Quorum)

Article 23. The meeting shall not be held unless more than one-half of the composing members in present, provided that this provision shall not be applicable when the meeting is convoked for resumption.

(Manner of Resolution)

Article 23. The resolution of the meeting shall be made upon consent of the majority; in the event pros and cons are equal, the chairman shall make decision.

(Written Vote)

Article 25. The staff member who is unable to attend the meeting owing to unavoidable circumstances may vote for decision in writing in respect to the matter previously notified, or may have a proxy delegate for him, which shall be regarded that he has attended the meeting.

(Authority of the Board of Directors)

Article 26. The board of directors shall decide the following matters in addition to those prescribed in this "Contribution Action";

1. Planning of program
2. Matters pertaining to the board of counsellors
3. Matters delegated though resolution of the board of counsellors
4. Establishment, revision, and abolishment of regulations
5. Other matter the chairman regards necessary

(Authority of the Board of Counsellors)

Article 27. The board of counsellors shall decide the following matters in addition to those prescribed in this "Contribution Action";

1. Approval on the operational projects
2. Approval on establishment, revision and abolishment of the important regulations
3. Decision on the matters borne by the members
4. Other matters the chairman regards necessary

#### Chapter 7: Staff Meeting and Committee Meeting

(Staff Meeting and Committee Meeting)

Article 28. In order to operate the programs of this council there shall be set up the staff meeting, and, upon necessity, the committee meeting.

Provisions for the staff meeting and committee meeting shall be made by the chairman through resolution of the board of counsellors.

Chapter 8: Administration Office

(Administration Office)

Article 29. Administration office shall be established in order to execute the council business. Provisions for administration office shall be made by the chairman through resolution of the board of directors.

Chapter 9: Change of Contribution Action and Disbanding

(Change of Contribution Action)

Article 30. When any change on this contribution action is made, approval of the appropriate governmental agency, through consent from more than three-fourth of the counsellors shall be obtained.

(Disbanding)

Article 31. In order to disband this council, approval of the appropriate governmental agency, through consent from more than three-fourth of the counsellors shall be obtained.

(Disposition of Residuary Property)

Article 32. The residuary property, in the event of disbanding of this council, shall be contributed, through resolution of the board of counsellors with approval of organizations possessing similar purport as this council.

Chapter 9: Appendixes

(Enforcement of Detailed Provisions)

Article 33. The detailed provisions necessary for enforcement of this "Contribution Action" shall be made by the chairman through resolution of the board of directors.

(Date of Enforcement)

Article 34. This contribution action shall be enforced as from (date),

(Staff at the Time of Establishment)

Article 35. The below-named shall act the director until the staff members shall be nominated according to Article 16, Item No. 2.

Director - So and So.

Director - So and So.

Nakayama/es

List of Sponsors for Establishment of  
Juridical Person, Saitama Prefecture Social Welfare Council

1. Persons concerned with Social Welfare Organization or Institution (No special order is observed).

- o Standing-in for preparation
- o In for preparation

Job Title	Name	Address
Chief, Saitama Pref. Community Chest Committee	E. Ishikawa	Shinkai-mura, Osato-gun
Chief, Imperial Gift Foundation, Saitama Pref. Doho-Engokai	o H. Sekine	Kaneya-mura, Kodama-gun
Chief, Juridical Person, Saitama Pref. Welfare Association	K. Fukunaga	Omiya City
Vice-chief, Saitama Pref. Social Work Association	o K. Matsumoto	Matsuyama-machi, Hiki-gun
Chief, Saitama Pref. Child Welfare Deliberating Council		
Managing Director, Saitama Pref. Repatriates Welfare Association	E. Maruyama	Urawa City
Director, Juridical Person, Saitama Welfare Association	o S. Tamura	Kasukabe-machi, Minami-saitama-gun
Chief, Corporate Juridical Person, Jidan-Kai	H. Kuramochi	Ibara-machi, Kitaadachi-gun
Chief, Administration Office, Saitama Pref. Community Chest Committee	o T. Mabuchi	Urawa City
Standing Director, Corporate Juridical Person, Saitama Pref. Doho Engokai	o R. Hoshi	Urawa City
Chief, Kawagoe Maternity Hospital, Living-in-Agency	M. Sato	Kawagoe City
Chief, Juridical Person, Ikushinkai, Institution for Feeble-minded children	o K. Maruki	Moroyama-machi, Iruma-gun
Chief, Kubiaien, Institution for Feeble Minded children	F. Kasai	Urawa City
Chief, Tamayodokai sponsored by Juridical Person Infant's Home, Yasuko-Kai	o S. Endo	Yorii-machi, Osato-gun
Chief, Aisen-Ryo (Yogo-Shisetsu)		
Chief, Aisen-Nyujiin (Home for Infant)	o S. Okayasu	Reiba-mura, Kita-saitama-gun
Chief, Aisen Day Nursery		
Vice-chief, Corporate Juridical Person, Saitama Ikui-In (Yogo-Sheetsu)	o K. Matsumoto	Kasumigaseki-mura, Iruma-gun

(over)

Chief, Yoshimien (Yogo-Shisetsu)	o Y. Ueoka	Nakahongi-mura, Kodama-gun
Chief, Dojin-Gakuin (Yogo-Shisetsu)	K. Sekine	Koragawa-mura, Iruma-gun
Chief, Juridical Person, Children's Town (Yogo-Shisetsu)	M. Yamazaki	Minami-sakurai-mura, Kitakatsushika-gun
Chief, Hozona-En (Yogo-Shisetsu)	H. Yokoyama	Urawa City
Standing Director, Juridical Person, Saitama Pref. Saisei-kai	o M. Yamakawa	Kawaguchi City
Chief, Kawaguchi Hospital	K. Kizawa	Kawaguchi City
Director, Juridical Person, Saitama Kosei-kai	o T. Maruyama	Urawa City
Secretary, Saitama Pref. Minsei-in Federation	o S. Takaoka	Urawa City
Secretary, Saitama Pref. Social Work Association	o Y. Muramatsu	Urawa City
Chief, Warabi Boshi-Ryo, Juridical Person, Saitama Pref. Doho Engo Kai	S. Kuroki	Warabi-machi, Kitadachi-gun
Managing Director, Women's Town Juridical Person, Suiko-kai	T. Sawada	Fukuoka-mura, Iruma-gun
Chief, Shiragiku Day Nursery	Y. Matsumoto	Fukiage-machi, Kitadachi-gun
Vice-chief, Toyooka Day Nursery	T. Shigeta	Toyooka-machi, Iruma-gun
Chief, Shirayuri Day Nursery	M. Fujiwara	Hanno-machi, Iruma-gun
Chief, Moroyama Day Nursery	S. Ichikawa	Moroyama-machi, Iruma-gun
Chief, Wakaba Day Nursery	F. Ono	Agano-mura, Iruma-gun
Chief, Ogawa Day Nursery	T. Ojima	Ogawa-machi, Hiki-gun
Chief, Chichibu Aritsune-En	S. Horiguchi	Chichibu City
Chief, Myojo Day Nursery	M. Kuramochi	Kaino-machi, Chichibu-gun
Chief, Yorii Day Nursery	B. Kashihara	Yorii-machi, Osato-gun
Chief, Airin Day Nursery	K. Yuki	Kumagaya City
Chief, Mikuni Day Nursery	Y. Amata	Kumagaya City
Chief, Matsuiwaji Day Nursery	T. Takakuwa	Kumagaya City
Chief, Wakaba Day Nursery	K. Hoizumi	Gyoda City
Chief, Wako Day Nursery	K. Iwasa	Gyoda City

Chief, Izumi Day Nursery	T. Kuse	Kawaguchi City
Chief, Showa-En, Juridical Person, Saitama Kosei-kai	Z. Takegasa	Urawa City
Managing Director, Saitama Pref. Kaitakuminjikyō-kai	K. Akaishi	Urawa City
Chief, Urawa City Guidance Association	S. Koyama	Urawa City
Chief, Saitama Pref. Blind Association	S. Nakamura	Kumagaya City
Chief, Kamaba Children's Play Ground (Child Welfare Institution)	Y. Nakajima	Urawa City
Chief, Saitama Juvenile Protection Association	E. Iimura	Urawa City
Secretary, Japan Red Cross Saitama Branch	Z. Shinno	Urawa City
Chief, Japan Red Cross Omiya Hospital	S. Shima	Omiya City
Chief, Japan Red Cross Ogawa Hospital	R. Sotoda	Ogawa-machi, Hiki-gun
Chief, Kawagoe Shujitsu-En, Juridical Protection Organization	S. Nishi	Kawagoe City
Chief, Chichibu Gaku-En, Tama Shonenin Branch	M. Shibazaki	Yorii-machi, Osato-gun
Chief, Urawa Gakuen	Y. Ushigome	Harayamanitta, Urawa City

2. Minsei-iin and Other Volunteers

Job-Title	Name	Address
Vice-chairman, Pref. Minsei-iin Federation	K. Oishi	#74, 6-chome, Urawa City
Standing-iin Minsei-iin Federation	T. Yamazaki	#33, 5-chome, Nakamachi, Urawa City
Counsellor, Pref. Minsei-iin Federation	K. Yamada	#121, 1-chome, Takasago-machi, Urawa City
Inspector, Pref. Minsei-iin Federation	K. Kubota	#68, 2-chome, Takasago-machi, Urawa City
Standing Minsei-iin	K. Masuda	#1659, Negishi, Urawa City
Director, Pref. Minsei-iin Federation	Y. Miyahara	#609, Kawagoe, Oaza Kawagoe City
Standing Minsei-iin	S. Ishikawa	#58, Sennaminitta, Kawagoe City
Standing Minsei-iin	T. Matsukura	#1000, Kawagoe Oaza, Kawagoe City
Director, Pref. Minsei-iin Federation	E. Yanouchi	#113, Gyoda, Aza, Gyoda City



Standing Minsei-iin	M. Matsumoto	#167, Gyoda Aza, Gyoda City
Standing Minsei-iin	M. Suzuki	#102 Gyoda
Director, Pref. Minsei-iin Federation	T. Kaneda	#389, 3-chome, Oaza Omiya, Omiya City
Standing, Minsei-iin	K. Matsumoto	#290, Nishiuchino Oaza, Omiya City
Standing Minsei-iin	M. Matsuzaki	#109, 1-chome, Onari Oaza, Omiya City
Standing Minsei-iin	T. Oda	#162, Takahana-cho, Omiya City
Director, Pref. Minsei-iin Federation	M. Ishii	#70, 1-chome, Shimizu- cho, Kawaguchi City
Councillor Pref. Minsei-iin Federation	C. Yamazaki	#146, 3-chome, Sakae- machi, Kawaguchi City
Director, Pref. Minsei-iin Federation	A. Aoki	#187, Kumagaya, Kumagaya City
Inspector, Pref. Minsei-iin Federation	M. Nebashi	#252, 2-chome, Hirato Oaza, Kumagaya City
Director, Pref. Minsei-iin Federation	K. Asami	#678, Omiya Aza, Chichibu City
Director, Pref. Minsei-iin Federation	K. Hosoi	#608, Tokorozawa, Aza, Tokorozawa City
Director, Pref. Minsei-iin Federation	M. Unno	#989, 3-chome, Warabi- machi, Kitaadachi-gun
Councillor, Pref. Minsei-iin Federation	S. Kawano	#754, 2-chome, Konosu- machi, Kitaadachi-gun
Standing Minsei-iin	I. Takagi	Soka-machi, Kitaadachi-gun
Standing Minsei-iin	K. Muto	Shigi-machi, Kitaadachi-gun
Standing Minsei-iin	Y. Hosoda	Toyooka-machi, Hosoda
Standing Minsei-iin	Y. Hattori	Hanno-machi, Iruma-gun
Director, Pref. Minsei-iin Federation	K. Matsumoto	Ogawa-machi, Hiki-gun
Standing Minsei-iin	Y. Masuda	Nakamura-machi, Hiki-gun
Councillor, Pref. Minsei-iin Federation	J. Kudo	Matsuyama City
Standing Minsei-iin	T. Masaki	Meikaku-mura, Hiki-gun
Standing Minsei- iin	H. Sekiguchi	Yoshioka-mura, Osato-gun
Standing Minsei-iin	M. Shimada	Yorii-machi, Osato-gun

Director, Pref. Minsei-iin Federation	S. Nakamura	Fukaya-machi, Osato-gun
Standing Minsei-iin	S. Hasuitsu	Tsumanuma-cho, Osato-gun
Councillor, Pref. Minsei-iin Federation	F. Kanzawa	#856, Kasu-machi, Kita-Saitama-gun
Standing Minsei-iin	G. Saito	Reiba-mura, Kita-Saitama-gun
Standing Minsei-iin	S. Arai	Shimoshibu-mura, Kita-Saitama-gun
Standing Minsei-iin	H. Fujita	Shitami-mura, Kita-Saitama-gun
Director, Pref. Minsei-iin Federation	E. Kobayashi	Kuki-machi, Minami-Saitama-gun
Standing Minsei-iin	Y. Takei	Kuki-machi, Minami-Saitama-gun
Standing Minsei-iin	T. Kawamo	Hikatsu-mura, Minami-Saitama-gun
Councillor, Pref. Minsei-iin Federation	M. Horikiri	Hiramuma, Aza Yoshi- kawa-machi, Kitakatsushika
Standing Minsei-iin	G. Ono	#622, Nagami, Aza Kage- mori-mura, Chichibu-gun
Councillor, Pref. Minsei-iin Federation	B. Oshima	Nogami-machi, Chichibu-gun
Director, Pref. Minsei-iin Federation	I. Tateishi	#2874, Honjo-machi, Kodama-gun
Councillor, Pref. Minsei-iin Federation	Z. Kimura	#2498, Kodama-cho, Kodama-gun
Standing Minsei-iin	M. Takagi	Kumagaya City
Standing Minsei-iin	R. Nakajima	Kumagaya City

3. Persons Concerned with Gun, City Social Welfare Council (No special order is observed)

Job-Title	Name	Address
Mayor, Urawa City	K. Matsui	Urawa City
Mayor, Omiya City	T. Tsugawa	Omiya City
Mayor, Kawaguchi City	T. Tanaka	Kawaguchi City
Mayor, Kawagoe City	Y. Ito	Kawagoe City

Mayor, Kumagaya City	M. Kamoda	Kumagaya City
Mayor, Gyoda City	K. Okuyuki	Gyoda City
Mayor, Chichibu City	S. Morotake	Chichibu City
Mayor, Tokorozawa City	M. Arai	Tokorozawa City
Chairman, Urawa City Assembly	K. Akada	Urawa City
Chairman, Omiya City Assembly	K. Suda	Omiya City
Chairman, Kawaguchi City Assembly	J. Inagawa	Kawaguchi City
Chairman, Kawagoe City Assembly	H. Kongo	Kawagoe City
Chairman, Kumagaya City Assembly	S. Yamazaki	Kumagaya City
Chairman, Gyoda City Assembly	T. Nishizawa	Gyoda City
Chairman, Chichibu City Assembly	R. Takano	Chichibu City
Chairman, Tokorozawa City Assembly	N. Kishi	Tokorozawa City
Vice-chairman, Saitama Pref. Towns & Villages Mayors Meeting	F. Ogawa	Minami Sakurai-mura, Kitakatsushika-gun
Chairman, Iruma-gun, Towns and Villages Mayors Meeting	Y. Yoshikawa	Oya-mura, Iruma-gun
Chairman, Hiki-gun, Towns and Villages Mayors Meeting	K. Arai	Matsuyama-machi, Hiki-gun
Chairman, Chichibu-gun, Towns & Villages Mayors Meeting	B. Kadohira	Kaino-machi, Chichibu-gun
Chairman, Kodama-gun, Towns & Villages Mayors Meeting	I. Nakajima	Honjo-machi, Kodama-gun
Chairman, Osato-gun, Towns & Villages Mayors Meeting	E. Baba	Gosho-mura, Osato-gun
Chairman, Minami Saitama-gun, Towns and Villages Mayors Meeting	K. Shimamura	Dewa-mura, Minami-Saitama-gun
Chairman, Kitakatsushika-gun, Towns and Villages Mayors Meeting	Y. Ikeda	Shizuka-mura, Katakatsushika-gun
Chief, Kitaadachi-gun, Towns & Villages Chairmen	T. Okada	Warabi-machi, Kitaadachi-gun
Chief, Iruma-gun, Towns & Villages Chairmen	S. Kobayashi	Hanno-machi, Iruma-gun
Chairman, Saitama Pref. Towns & Villages Mayors Meeting		
Chairman, Kita Saitama-gun Towns and Villages Mayors Meeting	R. Manaka	Toyono-mura, Kita Saitama-gun
Chairman, Saitama Pref. Welfare Protection Inspection Association		

Chief, Saitama Pref. NHI Association Federation Chairman, Kitaadachi-gun, Towns and Villages Mayors Meeting	Y. Saito	Mamiya-mura, Kitaadachi-gun
Chief, Hiki-gun, Towns & Villages Chairmen	S. Noguchi	Nomoto-mura, Hiki-gun
Chief, Chichibu-gun, Towns and Villages Chairmen	S. Otsuka	Kaino-machi, Chichibu-gun
Chief, Kodama-gun, Towns and Villages Chairmen	N. Nakagawa	Honjo-machi, Kodama-gun
Chief, Osato-gun, Towns & Villages Chairmen	Y. Shiraishi	Teumanuma-machi, Osato-gun
Chief, Kita-Saitama-gun Towns and Villages Chairmen	K. Sato	Kasu-machi, Kita-Saitama-gun
Chief, Minami-Saitama-gun, and Kita-Katsushika-gun, Towns and Villages Chairmen	K. Imai	Sugito-cho, Kitakatsushika-gun
Chief, Welfare Department Urawa City	o T. Osawa	Urawa City
Chief, Social Affairs Section Omiya City	K. Inoue	Omiya City
Chief, Welfare Section Kawaguchi City	o G. Seki	Kawaguchi City
Chief, Welfare Section Kawagoe City	I. Fusegawa	Kawagoe City
Chief, Welfare Section Kumagaya City	S. Nakajima	Kumagaya City
Chief, Welfare Section Gyoda City	J. Kaneko	Gyoda City
Chief, Welfare Section Chichibu City	J. Matsuyoshi	Chichibu City
Chief, Welfare Section Tokorozawa City	I. Kurihara	Tokorozawa City
Chief, Welfare Section, Kitaadachi District Office	o K. Kurita	Urawa City
Chief, Welfare Section, Iruma District Office	o Z. Nakamura	Kawagoe City
Chief, Welfare Section, Hiki District Office	J. Harigaya	Matsuyama-machi, Hiki-gun
Chief, Welfare Section, Chichibu District Office	K. Taira	Chichibu City
Chief, Welfare Section, Kodama District Office	F. Tsuchida	Honjo-machi, Kodama-gun
Chief, Welfare Section, Osato District Office	M. Kayama	Kumagaya City
Chief, Welfare Section, Kita-Saitama District Office	R. Fukushima	Gyoda City
Chief, Welfare Section, Saikatsu District Office	S. Nakamura	Kasukaba-machi, Minami-Saitama-gun

4. Officials Concerned with Social Welfare and the Learned and Experienced Persons. (No special order is observed.)

Job-Title	Name	Address
Member of the House of Councillor	E. Kobayashi	Kawaguchi City
Member of the House of Councillor	Y. Hiramura	Hanno-machi, Iruma-gun
Member of the House of Councillor	Y. Matsunaga	Warabi-machi, Kitaadachi-gun
Member of the House of Councillor	M. Uehara	Sugito-machi Kitakatsushika-gun
Member of the House of Representative	K. Fukunaga	Omiya City
Member of the House of Representative	K. Kawajima	Omiya City
Member of the House of Representative	K. Oizumi	Kawaguchi City
Member of the House of Representative	R. Yamaguchi	Matsuyama-machi, Hiki-gun
Member of the House of Representative	E. Hosoda	Hanno-machi, Iruma-gun
Member of the House of Representative	I. Shimizu	Iruma-machi, Iruma-gun
Member of the House of Representative	K. Asami	Yokose-mura, Chichibu-gun
Member of the House of Representative	M. Takama	Yorii-machi, Osato-gun
Member of the House of Representative	M. Aoki	Kyowa-mura, Kita-Saitama-gun
Member of the House of Representative	Y. Furujima	Koshigaya-machi, Minami-Saitama-gun
Member of the House of Representative	M. Sase	Gamo-mura, Minami-Saitama-gun
Chairman, Pref. Assembly	Y. Todoroki	Obusuma-mura, Osato-gun
Vice-chairman, Pref. Assembly	M. Arai	Koshigaya-cho, Minami-Saitama-gun
Chairman, General Affairs Standing-iins. Pref. Assembly	S. Mogi	Kojikano-machi, Chichibu-gun
Chairman, Health Standing-iins. Pref. Assembly	Y. Ishii	Kurihashi-machi, Kitakatsushika-gun
Chairman, Agriculture Standing-iins. Pref. Assembly	T. Yamada	Yorii-machi, Osato-gun
Chairman, Education Standing-iins. Pref. Assembly	T. Koyano	Kozu-machi, Kitaadachi-gun
Chairman, Labor Standing-iins. Pref. Assembly	K. Takahashi	Omiya City

Chairman, Labor, Standing-iins, Pref. Assembly Chairman, Saitama Pref. Livelihood Cooperative Management Council	S. Yamamoto	Waseda-mura, Kitakatsushika-gun
Chairman, Agriculture Standing-iins, Pref. Assembly	K. Uehara	Sugido-machi, Kitakatsushika-gun
Chairman, Economic Standing-iins, Pref. Assembly	S. Sekiguchi	Urawa City
Chairman, Guard Standing-iins, Pref. Assembly	H. Matsuoka	Yoshino-mura, Iruma-gun
Pref. Assembly Welfare Standing-iin	K. Kobe	Kawaguchi City
Pref. Assembly Welfare Standing-iin	T. Sekine	Chichibu City
Pref. Assembly Welfare Standing-iin	Y. Kaneko	Kaino-machi, Chichibu City
Pref. Assembly Welfare Standing-iin	K. Ofuji	Hanyu-machi, Kita-Saitama-Gun
Pref. Assembly Welfare Standing-iin	I. Saito	Kamio-machi, Kitaadachi-gun
Pref. Assembly Welfare Standing-iin	S. Takei	Tamiya-mura, Kitakatsushika-gun
Pref. Assembly Welfare Standing-iin	S. Kimizuka	Kasukabe-machi, Minami-Saitama-gun
Chief, Saitama Public Information Association	R. Murakami	Urawa City
Chief, Asahi Press Urawa Branch	K. Umeno	Urawa City
Chief, Mainichi Press Urawa Branch	Y. Hirakani	Urawa City
Chief, Yomiuri Press Urawa Branch	F. Watanabe	Urawa City
Chief, Tokyo Press Urawa Branch	T. Tsukigata	Urawa City
Chief, Nihon Keizai Press Urawa Branch	S. Daidoji	Urawa City
Chief, Kyodo Press Urawa Branch	M. Takahashi	Urawa City
Chief, Saitama Pref. Culture Hall	K. Shimoji	Omiya City
Chairman, Saitama Pref. Board of Education	Z. Mizumura	Kawagoe City
Chairman, High School Association	A. Isori	Urawa City
Chairman, Middle School Association	K. Tanaka	Omiya City
Chairman, Saitama Pref. Mothers and Children Welfare Deliberating Council President, the Saitama Press	K. Sakatani	Urawa City

Chairman, Primary School Association	K. Kurazawa	Yono-machi, Kitaadachi-gun
Chairman, Private School Council	K. Komatsubara	Urawa City
Mayor, Toyooka Town Chairman, Saitama Pref. Home-Work Referral Management Comm.	N. Igeta	Toyooka City
Chief, Japan Midwife, Nurse, & Health Nurse Association Saitama Branch	S. Takehasa	Urawa City
Chairman, Saitama Pref. Doctor's Association (Chief, Disabled Persons Welfare Council)	M. Hagiwara	Omiya City
Vice-Chairman Saitama Pref. Dentists Association	I. Mori	#1189, Yawatayama, Kodama-machi, Kodama
Chairman, Saitama Pref. Pharmacist Association	K. Tsuboi	Urawa City
Chairman, Saitama Pref. Juvenile Organization Liaison Council	S. Tsubahashi	Warabi-machi, Kitaadachi-gun
Chairman, Saitama Pref. Women Organization Liaison Council	C. Matsui	Urawa City
Chairman, Saitama Pref. Widow's Federation	Y. Horiuchi	Urawa City
Chief, Kodama-gun, Woman's Club	K. Asami	Kanpobara-mura, Kodama-gun
Doctor	S. Yoshino	Urawa City
Chairman, Saitama Pref. Lawyer's Association	S. Furuyama	Urawa City
Lawyer	A. Matsunaga	Urawa City
Lawyer	S. Kimifumi	Urawa City
Member of Human Right Guarantee Committee	S. Aida	Urawa City
Chief, Musashino Gakuen	N. Aoki	Okado-mura, Kitaadachi-gun
Personnel of Yogo Shisetsu	Gertrude A. Kuklid	Raiba-mura, Kita-Saitama-gun
Director, Juridical Person, Saitama Pref. Saisei-Kai	Civil Maximo	Urawa City
Director, Juridical Person, Saitama Pref. Saisei-Kai	K. Osawa	Urawa City
Director, Juridical Person, Saitama Pref. Saisei-Kai	C. Iizuka	Urawa City
Director, Juridical Person, Saitama Pref. Saisei-Kai	C. Matsuyama	Urawa City
Director, Juridical Person, Saitama Pref. Saisei-Kai	T. Tanaka	Kawaguchi City
Director, Juridical Person, Saitama Pref. Saisei-Kai	M. Kobayashi	Urawa City

Representative, YWCA	M. Shiraishi	Urawa City
Representative, YWCA	A. Ichikawa	Urawa City
Representative, YWCA	T. Kawajima	Omiya City
Vice-chairman, Saitama Pref. Community Chest Committee	S. Imai	Dewa-mura, Minami-Saitama-gun
Chairman, Saitama Pref. Social Welfare Council	Y. Hasegawa	Yonomachi, Kitaadachi-gun
Vice-chairman, Saitama Pref. Juvenile Problem Counter-Measure Council	S. Otomo	Harayamanitta, Urawa City
Chairman, Saitama Pref. P.T.A. Council	K. Yaginuma	Omiya City
Chief, Saitama Public Security Commission	K. Nagashima	Omiya City
Chief, Urawa Juvenile Observation Office	K. Aoyama	Urawa City
Chief, Urawa Adult Observation Office	H. Kamata	Urawa City
Chief, Urawa Family Court	T. Kajimura	Urawa City
Chief, Saitama Labor Standard Office	I. Matsumoto	Urawa City
President Saitama University	R. Nizeki	Urawa City
Professor, Saitama University	Y. Kuriya	Urawa City
Vice-President, Saitama Bank	Y. Akimoto	Urawa City
Standing Director, Saitama Pref. Credit Guarantee Association	M. Ishikawa	Urawa City
Chief, Credit Union	Y. Murakami	Sama, Gyoda City
	F. Ono	Saka-machi, Kitaadachi-gun
President, Chuki Railway Company Ltd.	M. Kakiyama	Kumagaya City
President, Tobu Railway Company Ltd.	K. Nezu	#2, 1-chome, Koume-machi, Sumida-ku
President, Chichibu Cement Company Ltd.	K. Moroi	c/o Kogyo Club, Marunouchi, Tokyo-To
Governor	Y. Osawa	Pref. Office
1st Vice-Governor	E. Iizuka	Pref. Office
2nd Vice-Governor	Y. Matsuyama	Pref. Office
Chief, Governor's Room	K. Kirihara	Pref. Office



Chief, General Affairs Department	M. Moriya	Pref. Office
Chief, Welfare Department	o R. Mizuno	Pref. Office
Chief, Health Department	S. Kanai	Pref. Office
Chief, Education	K. Hosoya	Pref. Office
Chief, National Police Team	T. Sakai	Pref. Office
Chief, Kitaadachi District Office	J. Hirooka	Urawa City
Chief, Iruma District Office	Y. Matsuba	Kawagoe City
Chief, Hiki District Office	C. Tonegi	Matsuyama-cho, Hiki-gun
Chief, Chichibu District Office	K. Kubokawa	Chichibu City
Chief, Kodama District Office	K. Mogi	Honjo-machi, Kodama-gun
Chief, Osato District Office	J. Hisazawa	Kumagaya City
Chief, Kitasaitama District Office	R. Takatsu	Gyoda City
Chief, Saikatsu District Office	K. Ito	Kasukabe-machi, Minami-saitama-gun
Chief, Pref. Protection Section	o M. Osawa	Pref. Office
Chief, Pref. Social Affairs	o k. Takeda	Pref. Office
Chief, Pref. Children Section	o T. Orihara	Pref. Office
Chief, G.A. Division, Protection Sec.	o T. Yazawa	Pref. Office
Chief, In-Service Training Div.	o S. Takahashi	Pref. Office
Chief, G.A. Div. Protection Sec.	o M. Ebihara	Pref. Office
Chief, Protection Div. Protect. Sec.	o J. Okubo	Pref. Office
Chief, G.A. Div. Children Section	o T. Shinto	Pref. Office
Chief, Wel. Div. Children Section	o M. Kanamori	Urawa City
Chief, Saitama Pref. C.W. Center	J. Itsumi	Urawa City
Chief, Kumagaya C.W. Center	M. Kawajima	Kumagaya City
Chief, Pref. Operated, Saitama Gakuen	M. Hikima	Kamio-machi, Kitaadachi-gun

Nakayama/es

Planning of Program and Budget of Annual  
Income and Expenditure for the Year of 1951 and 1952

Saitama Prefecture Social Welfare Council

o Planning of Program

1. Liaison and Comprehensive Projecting of Social Welfare Work

(1) Keeping the close contact with the governmental offices and also the central organizations, it aims at contributing to the organized activities of the social welfare organ being comprised of Gun, City council, organization, institution and volunteer as the leader.

(2) With close contact and mutual cooperation between the Gun, City council, organization, institution and volunteer, it is expected to strengthen development of various organs and their activities.

(3) Working out the comprehensive project regarding the prefectural social welfare program, an attempt shall be made in order to promote the welfare of people through accelerating every conceivable means necessary for execution of the project. For the accomplishment of this purpose, the comprehensive projecting committee shall be established.

2. Research and Study of the Social Welfare Work

(1) Based upon the research on the public opinion in reference to the actual condition of the prefectural people and the social welfare work, propriety of the current activities by the public and private social welfare work shall be examined.

(2) The contents of program and operational condition of social welfare institutions and organizations being survived, the method of their improvement and development shall be studied.

(3) The library necessary for promoting the social welfare work and other requisite materials shall be prepared.

3. In-Service Training and Development of Qualification of Leaders and Those Engaging in the Social Welfare Work

(1) The study meeting and other in-service training shall be given to the leader, the institution operator and its personnel and other private volunteer in order to develop their qualification.

(2) In order to train the well qualified and professionalized personnel, the properly qualified person shall be dispatched to the Social Work University and the Central Training School.

(3) In response to the request from Gun, City council, organization or institution, the social welfare work professionalized lecturer shall be referred or dispatched.

#### 4. Enlightenment and Publicity of the Social Welfare Work

(1) To carry out the purpose of enlightenment and publicity of the social welfare work, the bulletin (4000 copies) shall be published every month.

(2) In the event the comprehensive project and its enforcement regarding various social welfare functions such as "Children Protection Week" or "Year-End Campaign" are made, sponsorship or co-operation shall be taken.

(3) As to various programs for enlightenment and publicity of the social welfare work such as "Children Culture Exhibition," or "Work-Shop Products Exhibition," sponsorship or co-operation shall be taken.

(4) Through such means as a price essay, radio and newspaper the enlightenment and publicity of the social welfare work shall be done.

(5) An attempt for enlightenment and publicity of Community Chest program shall be made, and its Thanksgiving Party shall be held.

(6) The positive co-operation shall be taken in respect to the execution of enlightenment and publicity program of the social welfare carried by the governmental offices and Gun, City Council.

#### 5. Opening and Participation of the Social Welfare Conference

(1) Social Welfare Work Conference in the prefecture  
Commemorate Lecture Meeting

Official Commendation of Meritorious Person for the Social Welfare Work

(2) The prefectural representatives shall be dispatched to the National Social Welfare Work Conference, National Child Welfare Work Conference, and National Minsei-iiin (Jido-iiin) Conference. The positive attitude such as to present and deliberate on the subject shall be taken.

#### 6. Promotion of Social Welfare Organizations and Development of Programs

(1) Development of Social Worker Association, and other various social welfare organization and promotion of the programs shall be done.

(2) Committee activities, study meetings and other programs necessary for development of the social welfare shall be enforced.

\*\*\*\*\*

Budget of Annual Income and Expenditure of Juridical Person, Saitama Prefecture Social Welfare Council for the Year of 1950 & 1951.

Annual Income

Item		Budget	Remark
1. Share		¥1,850,000	
	1. Share	1,850,000	
	1. Share of Gun, City Council	200,000	5/100 of C. S. Allotment
	2. Share of Organization and Institution	250,000	
2. Subsidy	3. Share of Community Chest Committee	1,400,000	
		3,000,000	
	1. Subsidy	3,000,000	
3. Project Income	1. Subsidy	3,000,000	
		420,000	
	1. Project Income	420,000	
4. Contribution	1. Project Income	420,000	
		410,000	
	1. Contribution	410,000	
	1. Contribution	410,000	

5. Miscella-			¥30,000	
	1. Miscella-		30,000	
	neous	1. Miscellaneous Income	30,000	
	Income			
6. Amount			5,000	
Trans-	Amount			
ferred	1. Transferred		5,000	
		1. Amount Transferred	5,000	
Total			¥5,715,000	

Expenditure

Item		Budget	Remark
L. Administra-		¥1,995,000	
tive Cost			
		80,000	
1. Conference			Board of Directors
Expense			¥4,000 per time
	1. Conference Expense	80,000	(5 times)
			Board of Counselors
			¥20,000 per time
			(3 times)
		1,430,000	
2. Various			¥15,000 per person
Payment			monthly (12 months)
	1. Salary	900,000	¥10,000 for 5 persons
			monthly (12 months)
			¥5,000 for 2 persons
			monthly (12 months)
	2. Allowances	53,000	Family Allowance
			Residence Allowance
			Over Time Allowance
			¥198,000 ¥220,000
			¥112,000
3. Travel		150,000	
Allowance			
	1. Travel Allowance	150,000	

			¥168,000		
1. Administrative Cost		1. Printing Expense	60,000		
		2. Communication Expense	48,000	Telephone ¥12,000 Mail ¥36,000	
		3. Wear & Tear Cost	24,000		
		4. Light & Heat Expense	12,000		
		5. Furniture Expense	24,000		
	5. Miscellaneous Expense		167,000		
		1. Room-rental	12,000		
		2. Welfare Expense	45,000		
		3. Miscellaneous Expense	110,000	Advertisement ¥50,000 Transportation 24,000 Miscellaneous 36,000	
			3,060,000		
2. Administrative Cost	1. Liaison & Guidance Expense		222,000		
		1. Liaison Expense to Governmental Offices & Central Bodies	30,000		
		2. Gun, City Social Welfare Work Management Council Expense	36,000		
		3. Liaison Council Expense	12,000		
		4. Child Welfare Work Management Council Expense	24,000		
		5. Liaison Meeting Expense of Organization receiving Community Chest	10,000		
		6. Social Welfare Work Volunteer Liaison Meeting Expense	50,000		
		7. Projecting expense such as Liaison, Guidance & Issue of News	60,000		
				450,000	
		1. Social Welfare Work Guidance Office Study Meeting Expense	100,000		
		2. Social Work Institution Personnel Study Meeting Expense	100,000		
		3. Expense for In-service Training of Minsei-in (Jido-in)	50,000		
		4. Expense for Dispatching Lecturers	200,000		
			5		

			¥260,000
3. Expense used for Conference	1. Pref. Social Welfare Conference		200,000
	2. National Social Welfare Child Welfare, Woman Minsei-in Conference		60,000
4. Comprehensive Projecting Expense			100,000
	1. Comprehensive Projecting Committee Expense		100,000
5. Research and Study Expense			324,000
	1. Research on Actual Living Condition in the Prefecture		50,000
	2. Survey on Public Opinion on Social Welfare Work		50,000
	3. Survey on Actual Condition of Social Welfare Work		50,000
	4. Survey on Actual Condition of Social Welfare Institution		50,000
	5. Study on District Social Welfare Work		36,000
	6. Study on Institution Operation		6,000
	7. Various kinds of Study Committee		6,000
	8. Library of Social Welfare		6,000
	9. Survey on Study of Child Welfare Materials		20,000
	10. Preparation of Social Welfare Work Outline		50,000
			1,064,000
6. Expense used for Enlightenment & Publicity	1. Issue of Bulletin		400,000
	2. Exhibition of Workshop Products		50,000
	3. Referral of Good Library		30,000
	4. Radio, Newspaper		60,000
	5. Children Culture Exhibition		150,000
	6. Preparation of Various Social Welfare Reference Material		100,000
	7. Various Movement Weekly Function		100,000
	8. Publicity of Community Chest Work		20,000
	9. Thanksgiving Party of Community Chest Work		50,000
	10. Price Essay of Social Welfare		50,000
	11. Co-operation Expense of Gun, City Council Enlightenment		54,000

			¥150,000	
		1. Promotion of Social Worker Association	50,000	
		2. Promotion of Disabled Person's Organization	30,000	
		3. Co-operation of Widows Association Work	10,000	
		4. Co-operation of Bereaved Association Work	10,000	
		5. Development of Other Organization	50,000	
			220,000	
	9. Expense used for Various Committee Meeting Management	1. District Social Welfare Committee Meeting Management	60,000	
		2. Minsei-in Committee Meeting Management	50,000	
		3. Child Welfare Work Committee Meeting Management	30,000	
		4. Public Social Work Committee Meeting Management	20,000	
		5. Work-Shop Committee Meeting Management	10,000	
		6. Other Committee Meeting Activities	50,000	
			400,000	
4. Expense used for Formation	1. Formation	1. Formation	400,000	Formation Preparation ¥250,000 Inaquate Meeting ¥150,000
			200,000	
5. Miscellaneous Expenditure	1. Miscellaneous Expenditure	1. Share of National Social Welfare Councils	100,000	
		2. Share of Bloc Liaison Conference	50,000	
		3. Share of National Conferences by type of work	50,000	
6. Reserve Funds			60,000	
	1. Reserve Funds		60,000	
		1. Reserve Funds	60,000	
Total			5,715,000	



Committee For Preparation of Establishing  
Kanagawa Pref Social Welfare Council  
Regulations (draft)

神奈川県社会福祉協会設立準備委員会要綱(案)

一、社会福祉事業の能率の運営と組織的活動を促進し、もって地域社会福祉の増進を図ることを目的とする。

神奈川県社会福祉協会を設立するに、神奈川県社会福祉協  
議会設立準備委員会(以下準備委員会と云ふ)を置く、  
二、本会事務局を置く。

神奈川県民生部社会課

三、準備委員(以下委員と云ふ)は左の如く以て構成する。

- 一、公私社会福祉施設を団体代表 二一名
- 二、民生委員(児童委員)会 表 二四名
- 三、各郡市民生 **事業** 協会代表 表 一五名
- 四、地方行政庁社会福祉関係部課代表 二〇名
- 五、社会福祉に関係する団体代表 一〇名
- 六、学識経験者 二名

九〇名

四 本会に左の役員を置く

委員長 一名

副委員長 若干名 (四名)

常任準備委員 以下常任委員と云ふ。若干名 (二十六名)

五 委員長 副委員長 常任委員は委員總會に於て委員の中より選任す

六 委員長は本会を代表す

七 副委員長は委員長を補佐し委員長事務あるときは委員長の指名す

八 副委員長は職務を代理す

九 本会と事務を処理せしむるため事務局長を職員を置く

十 委員長はこれを任命す

十一 會議日總會常任委員会の二種とする

十二 會議は委員長が招集しその議長となる

十三 會議は構成員二分の一以上の出席があるときは開議することとし、出席二分の一以上の議決は過半数により可否同数なるときは議長これを決す

二、總會は神奈川県社会福祉協議会（以下協議会と云う）設立に必要な事項を

審議決定する。

三、常任委員会は協議会設立に必要な諸準備を行う。

三、本会に要する各丑寅は附金ほか収入を以て之れを支弁する。

四、本会は第一項の目的達成し終るときは必然的に解散する。

Saitama Pref.

## Status of Community Welfare Council (Preparation for formation)

As of 20 Mar. 1951

Name	Location	Name of President	Date of Formation	Prospective Date of Formation	Remarks
Saitama Pref. Community Welfare Council	42,3 Naka-cho, Urawa-shi	Eiichi Ishikawa	17 Jan. 1951		
Hiki-gun Community Welfare Council	4,240 Matsuyama-machi, Hiki-gun	Chikao Tonegi	27 Dec. 1950		
Kitaadachi-gun Community Welfare Council	91-2 Naka-cho, Urawa-shi	Kojun Ishikawa	7 Feb. 1951		
Kawagoe-shi Community Welfare Council	38, Kawagoe, Oaza, Kawagoe	Torima Sunaga	3 Mar. 1951		
Saikatsu Community Welfare Council	1,855, Kasukabe Kasukabe-machi, Minamisaitama-gun	Kanzaburo Ito	10 Mar. 1951		
Kumagaya-shi Community Welfare Council	1,080, Kumagaya-Oaza, Kumagaya-shi	Kenju Aoki	15 Mar. 1951		
Iruma-gun Community Welfare Council	38, Kawagoe, Oaza, Kawagoe-shi	Yoichi Yoshikawa	17 Mar. 1951		
Kodama-gun Community Welfare Council	2,757, Honjo-machi, Kodama-gun	Ichijuro Nakajima	20 Mar. 1951		
Gyoda-shi Community Welfare Council	192, Oshi, Oaza, Gyoda-shi	Chotaro Masuda	20 Mar. 1951		
Chichibu-gun Community Welfare Council	1,141, Azuma-machi, Chichibu-shi	Katsuo Kubokawa	20 Mar. 1951		
Osato-gun Community Welfare Council	Kumagaya-shi	Jitsun Hisazawa	26 Mar. 1951	26 Mar. 1951	
Kitasaitama-gun Community Welfare Council	Gyoda-shi	Chotaro Masuda	29 Mar. 1951		Scheduled at the end of March
Chichibu-shi Community Welfare Council	Chichibu-shi				"
Urawa-shi Community Welfare Council	Urawa-shi	Katsuzi Oishi	25 Mar. 1951		"
Tokorozawa-shi Community Welfare Council	Tokorozawa-shi		30 Mar. 1951		"
Kawaguchi-shi Community Welfare Council					

- 2 -

<u>Name</u>	<u>Location</u>	<u>Name of President</u>	<u>Date of Formation</u>	<u>Prospective Date of Formation</u>	<u>Remarks</u>
Kawaguchi-shi Community Welfare Council	Kawaguchi-shi				Scheduled at the beginning of April
Omiya-shi Community Welfare Council	Omiya-shi				"

Obana/es

National Council of Social WelfareFormation of National Council of Social Welfare

The National Council of Social Welfare held an inaugural meeting on January 12, and established the office in Harajuku Central Social Hall from February 1, 1951.

The Social Work Organization up to now has been the unit of social welfare institutions and expert social workers, but this Social Welfare Council is private organization voluntarily formed by the persons in general, and also the persons concerned with the organizations of politics, economic, culture, education, labor and public information, and representatives of various levels, for the general advancement of welfare activities. And the preparation has been in progress since last summer.

The Council is being organized at the Central, To, Do, Fu and Pref. and C.T.V. throughout the country.

The dissolution of Japan Social Work Assn. National Relief Assn. and All Japan Minsei-iin Federation are anticipated in the near future, as these organizations were primarily concerned with the liaison - coordination work with the Central Government and this work shall be handled by the National Council of Social Welfare hereafter, as a matter of course.

National Council of Social Welfare

The National Council of Social Welfare is composed by the representatives of the To, Do, Fu or Pref. Social Welfare Council, the representatives of the offices in concern with the social welfare at the Central Government, and also the persons of learned and experienced. And the purpose of the Council is to promote the advancement of social welfare and efficient operation and organizational activities of the social welfare work throughout the country.

List of the Officers and Staff of National Council of Social WelfareOfficers

President	Tago, Kazutami
Vice President	Nakagawa, Yoshihisa
Vice President	Aoki, Hideo
Adviser	Kasai, Yoshinori
Adviser	Nakagawa, Nozomi
Adviser	Tokugawa, Iemasa

Director	Kimura, Chujiro
"	Takada, Masaki
"	Ogawa, Seikai
"	Maki, Kenichi
"	Nakagawa, Yuho
"	Masuike, Seisuke
"	Dazai, Hirokuni
General Secretary	Aoki, Hideo
o General Affairs Division	
Chief	Nakagawa, Yuho
Secretary	Kumagaya, Mitsuyoshi
"	Nakamura, Yoshibumi
"	Nakamura, Kunio
"	Nishiuchi, Kiyoshi
"	Ebina, Akira
Clerk	Uemura, Nao
"	Yokoyama, Sadako
Temporary	Oda, Kyoko
o Social Agencies Division	
Chief	Sano, Keisaku
Secretary	Inoue, Tetsuo
"	Honma, Shinichi
"	Toyoda, Koichiro
"	Isomura, Mitsuo
Clerk	Inoue, Yoshio
o Volunteer Service Division	
Chief	Osada, Koichi
Secretary	Ito, Jugo
"	Karino, Mikao
"	Kurachi, Shunji
Clerk	Sakai, Sakari
Temporary	Hosoi, Setsuko
o Children's Welfare Division	
Chief	Makino, Shuji
Secretary	Okuma, Nobuyuki
"	Shimomura, Fusataka
"	Hoshino, Hiroshi
"	Yoshino, Yuko
Temporary	Motsuka, Tsuyoko

## o Public Relations Division

Chief	Sato, Shinichi
Secretary	Negishi, Shintaro
"	Kawamura, Sadaharu
"	Saeki, Nisaburo
Clerk	Imano, Fuminobu
"	Kobayashi, Yoshiyuki
Temporary	Suita, Michiko

## o Research and Planning Division

Chief	Maki, Kenichi
Secretary	Shigeta, Shinichi
"	Nagata, Mikio
Temporary	Kuwata, Keiichiro

## o Social Work Library

Secretary	Kobe, Junkichi
Clerk	Mura, Hanako

## o Social Work Institute

Secretary	Nishiuchi, Kiyoshi
"	Shigeta, Shinichi
Clerk	Sato, Setsuko

Brief History of Chairman Mr. Tago:

Born in Iwate Prefecture  
 Graduate of Tokyo University  
 Held position of Welfare Ministry Social Affairs Bureau Chief  
 Governor of Mie Prefecture  
 During above period he was sent abroad twice on official duty  
 Member of the House of Representative for seven terms  
 Chairman of the House of Representative

Meeting with SCAP, PHW

The meeting was held on February 2, 1950 with SCAP, PHW personnel Mr. Markuson and Mr. Mosher, and the Council President and the Chiefs of various Department of the National Council of Social Welfare.



First the representatives of SCAP gave hearty approval for the establishment of the Council and the statement of the cooperation on its development was given, and the strong emphasis was made on the following to clarify the whole management policy.

1. Relation of the Council and the Community Chest should be closer. Especially during the period of Community Chest campaign, all the members of the Council other than those working on emergency should work to cooperate fully with the Community Chest.
2. The Council should not utilize the Business Category Committee, or rely on the government officials and others, by the force of volunteer activities.
3. Relation of the central and local council must be kept intact and prevent from becoming controlled organizations, and develop it as the strictly democratic council.

Terms used by National Council of Social Welfare National Council of Social Wel.

President  
Vice-President  
Adviser  
General Secretary  
General Affairs Division  
Social Agencies Division  
Volunteer Service Division  
Children's Welfare Division  
Research and Planning Division  
Public Relations Division  
Social Work Institute

#### Secretariat News

Division Chiefs of Secretariat meets each day to keep close contacts between the divisions in effort for the democratic operation.

The principle functions are as follows:

1. Standing meeting of the Board of Directors  
11,00 hurs. 4th Friday of each month.
2. The business plans of each division must be submitted to the General Affairs Division by February 10.
3. The works transferred from Japan Social Work Assn. and Minsei-iin Federation to this Council.

Central Council for Love Campaign

Volunteer Service Division

Central Council for Mothers Day

Children's Welfare Division

Central Council for Children's Day

Children's Welfare Division

Child Welfare Official Study Council

Children's Welfare Division

National Child Institution Council

Children's Welfare Division

Training Course for Child Recreation Leaders

Children's Welfare Division

Training Course for Child Welfare Consultation Center Disernment Workers

Children's Welfare Division

Japanese Committee of International Social Wrok Conference

Reserch & Planning Division

Secretariat of Social Work Conference

Social Agencies Division

Secretariat of Child Welfare Conference

Children's Welfare Division

Minsei-iin Conference

Volunteer Service Division

Establishment of Social Welfare Council at Prefectures

Prefecture	Date	President	Location
Miyagi	1 Dec. 1950	Zennosuke Nakagawa	4-1 Atotsuke cho, Sendai City
Saitama	7 Jan. 1951		42-3 Nakacho, Urawa City
Toyama	23 Dec. 1950	Yoshiaki Fukuda	Social Welfare Sect. of Prefectural Office
Tottori	25 Jan. 1951	Ryoitsu Kurashige	Japan Red Cross, Tottori City
Shimane	17 Dec. 1950	Yasuo Tsunematsu	Japan Red Cross, Matsue City
Kagoshima	8 Dec. 1950	Yuzuru Shiokawa	National Relief Assn. Kagoshima City
Ishikawa	11 Feb. 1951		
Kochi	12 Feb. 1951		

Director Maki's Trip to United States

Kenichi Maki, Chief of Reserch and Planning Division of this council will leave on February 13 from Haneda Air Base on 3 months schedule trip to study Social Welfare Council and Community Chest campaign in United States.

Plans for Committee Organization

The functions of the committees, which are the center of the activities of the Social Welfare Council are being studied at the Division Chiefs meetings at present time, and the decisions will be made in the near future.

The Principle Committees are as follows:

- Welfare Committee
- Child Welfare Committee
- Social Work Education Committee
- Welfare Work Committee
- Educational Protection Committee
- Public Relations Committee
- Social Work Investigation Committee
- Social Work Financial Committee
- Liaison Committee
- Community Chest Liaison Committee

Concept of 5th National Child Welfare Conference

1. Purpose:

Concerning the technical operations of the Child Welfare Law, the various activities are taken by the persons concerned with the child welfare and also at the social districts. And the fulfillment of the child welfare must come from the mutual effort of these two. But at this time, the National Children's Welfare Conference is to be held with "How the children's living environments can be adjusted" as the object of the conference.

2. Title

The 5th National Child Welfare Conference

3. Period

May 17, 1951 for 3 days

4. Place

Tokyo-To

5. Sponsor

Welfare Ministry, Tokyo-To, National Council of Social Welfare, Tokyo-To Social Welfare Council

6. Supported by

Education Ministry, Attorney Generals Office, Labor Ministry, National Rural Police Headquarters

7. Organization & Structures

This conference shall be organized by the members and the officers of the council and its structure will be as follows:

- a. Local Nomination Council members
- b. Central Nomination Council members

8. Attendants

2000 persons (aver age of 15 persons from Local Nomination Committee)

The National Council of Social Welfare held its 1st preparatory Committee meeting on 10 February from 10:00 hours to confer on the conferences for this fiscal year. It was attended by Welfare Ministry, Education Ministry, Labor Ministry, Tokyo-To and the persons connected with the private child welfare work.

Nakayama

National Council of Social Welfare News

No. 2

2 March 1951

List of To, Do, Fu, Pref. Social Welfare Council (Interim)

(o mark indicates the council organized)

To, Do, Fu, or Pref.	Name	Representative	Location	Remarks
Hokkaido				
Aomori	Gun (City) Social Welfare Council Establishment Propelling Meeting	Kaichiro Onodera	c/o K. Onodera Shinmachi, Aomori City	To be established on 1 April
Iwate				
o Miyagi	Foundation, Miyagi Pref. Social Welfare Council	Zennosuke Nakagawa	#4, 1 chome, Sekifumachi, Sendai City	Established on 1 Nov. 50
Akita	Akita Pref. Social Welfare Work Federation	Kinnosuke Hamma	#11, Koyagami-cho, Nishine, Akita City	
Yamagata	Yamagata Pref. Social Welfare Council Establishment Preparatory Committee	Tsuyoshi Watari	c/o Pref. Welf. Relief Association. #284 Hatakago-cho, Yamagata	
o Fukushima	Foundation, Fukushima Pref. Social Welfare Council	Eisaku Fujimaki	Fukushima Pref. Office Welf. Dept. S.A. Sec.	
Ibaraki	Ibaraki Pref. Social Welfare Council Establishment Preparatory Committee	Shunkichi Suzuki	Ibaraki Pref. Office Welfare Department Social Affairs Section	Administration Bureau Organized on 19 Dec.
Tochigi				
Gumma	Gumma Pref. Social Welfare Council Establishment Preparatory Committee	Zentaro Abe	c/o Gumma Pref. Office #66, Kyokuwa-machi	Preparatory Council organized on 12 Dec.
o Saitama	Juridical person, Saitama Pref. Social Welfare Council		#42, 3 chome, Nakamachi, Urawa City	Established 17 Jan. 51
Chiba	Chiba Pref. Social Welfare Council Establishment Preparatory Committee	Hiroshi Kamata		
			c/o Chamber of Tokyo	

	Council Establishment Preparatory Committee	Shunkichi Suzuki	Welfare Department Social Affairs Section	tion Bureau Organized on 19 Dec.
Tochigi				
Gumma	Gumma Pref. Social Welfare Council Establishment Preparatory Committee	Zentaro Abe	c/o Gumma Pref. Office #66, Kyokuwa-machi	Preparatory Council organized on 12 Dec.
o Saitama	Juridical person, Saitama Pref. Social Welfare Council		#42, 3 chome, Nakamachi, Urawa City	Established 17 Jan. 51
Chiba	Chiba Pref. Social Welfare Council Establishment Preparatory Committee	Hiroshi Kamata		
o Tokyo	Tokyo-To Social Welfare Council	Anken Yamaguchi	c/o Chamber of Tokyo Industry and Commerce #14, 3 chome, Marunouchi, Chiyoda-ku, Tokyo	Established on 8 Jan. 51
Kanagawa				
o Niigata	Niigata Pref. Social Welfare Council Establishment Preparatory Committee	Saburo Murata	c/o Niigata Pref. Welf. Work Hall. #1 Higashi-Nakadori, Niigata City	Established on 2 March 1951
o Toyama	Juridical Person, Toyama Pref. Social Welfare Council	Yoshiaki Fukuda	c/o Toyama Pref. Office Social Welfare Section #1 Magarina, Niifusa, Toyama City	Established 23 Dec. 50
o Ishikawa		Okiji Naoyama	Pref. Social Work Hall Kakinokibatake, Kanagawa City	
Fukui				
Yamanashi	Yamanashi Pref. Social Welfare Council Preparatory Committee	Hideichi Okabe	Yamanashi Pref. Welfare Dept., Welf. Section	To be established by the juridical person
Nagano				
Gifu				To be put into action during Mar.
o Shizuoka	Shizuoka Pref. Social Welfare Council	Magohachi Oshio	#76, Higashi-Takasho Shizuoka City	Established on 20 Feb. 51
o Aichi	Aichi Pref. Social Welfare Council	Koichi Ishiguro	c/o Social Welfare Hall #1, 1 chome, Kajimachi, Chushozeki, Nagoya City	Established on 1 Feb. 51
Mie	Mie Pref. Social Welfare Council Establishment Committee	Shigeo Suzuki	Mie Pref. Office, Welf. Dept. Welfare Section	
Shiga	Shiga Pref. Social Welfare Council Preparatory Committee	Kokuzaemon Takeuchi	c/o Shiga Pref. Social Work Association (To be moved soon)	Administration office organized on 1 Jan.
	Kyoto-Fu Social Welfare Council			

DECLASSIFIED E.O. 12065 SECTION 3-402/NNDG NO. 775013

Gifu				To be put into action during Mar.
○ Shizuoka	Shizuoka Pref. Social Welfare Council	Magohachi Oshio	#76, Higashi-Takasho Shizuoka City	Established on 20Feb. 51
○ Aichi	Aichi Pref. Social Welfare Council	Koichi Ishiguro	c/o Social Welfare Hall #1, 1 chome, Kajimachi, Chushozeki, Nagoya City	Established on 1Feb. 51
Mie	Mie Pref. Social Welfare Council Establishment Committee	Shigeo Suzuki	Mie Pref. Office, Welf. Dept. Welfare Section	
Shiga	Shiga Pref. Social Welfare Council Preparatory Committee	Kokuzaemon Takeuchi	c/o Shiga Pref. Social Work Association (To be moved soon)	Administration office organized on 1 Jan.
Kyoto	Kyoto-Fu Social Welfare Council Establishment Preparatory Committee	Toraji Makino	Doho Engo Kai Office	
Osaka	Osaka Social Welfare Council Establishment Preparatory Committee		#1, Hozono-sakamachi Higashi-ku, Osaka City	
Hyogo	Hyogo Pref. Social Welfare Council Establishment Preparatory Administration Office	Nagataro Kobayashi	c/o Hyogo Pref. Social Work Association Hall #23, 2 chome, Nakayamatedori, Iketa-ku, Kobe City	
Nara				
Wakayama	Wakayama Pref. Social Welfare Council Establishment Preparatory Committee	Masachika Ishii	c/o Wakayama Pref. Welfare Federation Office	
○ Tottori	Tottori Pref. Social Welfare Council	Yoshiitsu Kuroshige	c/o Red Cross Tottori Branch, #1 Kuruma-cho Tottori City	Established 25 Jan. 51
Okayama	Okayama Pref. Social Welfare Council Establishment Preparatory Committee	Kozu Kawana	c/o Prefectural Office #946 Kamifuku, Okayama City	
Hiroshima				
Yamaguchi				
Tokushima	Tokushima Pref. Social Welfare Association	Yasaburo Ota	#11, 1 chome, Minami-uchi-machi, Tokushima	
Kagawa				
Ehime	Ehime Pref. Social Welfare Group	Sadatake Hisamatsu	#128, Katsuyama-cho Matsuyama City	
○ Kochi		Yoshitaka Yamamoto	c/o Kochi Pref. Minsei Kan #96, Obiya-machi Kochi City	Established on 12Feb. 51
Fukuoka				
Saga				

Wakayama	Wakayama Pref. Social Welfare Council Establishment Preparatory Committee	Masachika Ishii	c/o Wakayama Pref. Welfare Federation Office	
○ Tottori	Tottori Pref. Social Welfare Council	Yoshiitsu Kuroshige	c/o Red Cross Tottori Branch, #1 Kuruma-cho Tottori City	Established 25 Jan. 51
Okayama	Okayama Pref. Social Welfare Council Establishment Preparatory Committee	Kozu Kawana	c/o Prefectural Office #946 Kamifuku, Okayama City	
Hiroshima				
Yamaguchi				
Tokushima	Tokushima Pref. Social Welfare Association	Yasaburo Ota	#11, 1 chome, Minami-uchi-machi, Tokushima	
Kagawa				
Ehime	Ehime Pref. Social Welfare Group	Sadatake Hisamatsu	#128, Katsuyama-cho Matsuyama City	
○ Kochi		Yoshitaka Yamamoto	c/o Kochi Pref. Minsei Kan #96, Obiya-machi Kochi City	Established on 12 Feb. 51
Fukuoka				
Saga				
Nagasaki				
Kumamoto				
Oita	Oita Pref. Social Welfare Work Association Preparatory Comm.	Keiji Aragame	Pref. Social Work Association Office	
Miyazaki	Miyazaki Pref. Social Welfare Meeting	Fukuo Satoyama	#3, 10 chome, Beppu-cho, Miyazaki City	
○ Kagoshima	Corporate Juridical Person, Kagoshima Pref. Social Welfare Council	Josuke Shironagawa	c/o Doho Engokai. #1 Sakae-machi, Kagoshima City	Established on 8 Dec. 50



Nakayama/es

Local News of Social Welfare CouncilTokyo-To

Tokyo-To Social Welfare Council established its administration office in To Community Chest belonging to the Tokyo Chamber of Commerce and Industry, located at #2 Marunouchi, Chiyoda Ward, and Mr. Yasunori Yamaguchi was designated as the chairman. Further, Tokyo-To Community Chest decided to distribute ¥2,000,000 for the year of 1950 to To Social Welfare Council for the time being.

Aichi Prefecture

Aichi Prefecture Social Welfare Council Administration Office was put into action on 1 February under chairman, Mr. Koichi Ishiguro, vice chairman, Mr. Kohei Shimogo, and staff members, Messrs Akiharu Suzuki, Katsuro Kato and Tokujiro Kanda.

Shizuoka Prefecture

Shizuoka Prefecture Social Welfare Council had the inaugural meeting on 20 February designating Mr. Magohachi Oshio as the first chairman; with approximately 700 members' presence and Mr. Nakagawa, the vice-chairman of the national council, and Mr. Katsusai, vice-minister of Welfare Ministry participated there to offer congratulations.

Niigata Prefecture

Niigata Prefecture Social Welfare Council had the inaugural meeting on 2 March at Niigata City Koshisa Autonomy Hall. From the national council, Mr. Aoki, chief of Administration Office, was present. Accordingly, Prefectural Doho Engo Kai, Minsei-iin Federation, Social Work Federation, Welfare Work Association, Federation of Day Nursery Workshop Association, and Gun, City Welfare Relief Federation came to disband.

Yamagata Prefecture

Yamagata Prefecture Social Welfare Council is supposed to be put into action on 31 March.

Kinki Region

Social Welfare Councils of Shiga, Kyoto, Osaka, and Hyogo are now under preparation aiming at the actual activity taken during March.

Estimated Amount to be Distributed by To, Do, Fu, Pref.  
Community Chest to To, Do, Fu, Pref. Social Welfare Councils

As of 22 February 1951

Name of To, Do, Fu, Pref.	Estimate	Allotment by C.C.	Remarks
Aomori Pref. S.W.C.			
Akita Pref. S.W.C.	¥2,576,500	¥2,500,000	
Miyagi Pref. S.W.C.	5,846,250	5,726,250	
Fukushima Pref. S.W.C.	1,745,000	undecided	
Iwate Pref. S.W.C.	undecided	within ¥1,180,000	
Hyogo Pref. S.W.C.	undecided	within 300,000	
Tottori Pref. S.W.C.	undecided	undecided	
Saitama Pref. S.W.C.	¥5,715,000	¥1,500,000	
Chiba Pref. S.W.C.	8,000,000	3,000,000	¥700,000 from prefecture
Kanagawa Pref. S.W.C.	undecided		
Kochi Pref. S.W.C.	¥3,200,000	500,000	
Toyama Pref. S.W.C.	143,500	100,000	
Ishikawa Pref. S.W.C.	1,494,000	300,000	
Wakayama Pref. S.W.C.	undecided		
Niigata Pref. S.W.C.	3,700,000	2,500,000	¥400,000 from prefecture

o Round-table Conference with Representatives of Minsei-iin

The round-table conference with representatives of minsei-iin numbering 50 was opened on 22 March from 10 a.m. at conference room of National Council of Social Welfare; with participation of chairman, Mr. Tashi, vice-chairman, Messrs. Nakagawa and Aoki, and each department chief from National Council of Social Welfare, deliberating on the following points:

1. To approve as proposed the regulation of Welfare Work Committee which is regarded as the main committee of National Council of Social Welfare.
2. On managing this committee, conferences participated by those engaged in welfare work business in To, Do, Fu, Pref., in addition to council members should be held on demand.
3. To approve the planning of program contemplated by minsei-iin department.

o Regular Meeting of Directors

On 22 February from 10 a.m., under participation of chairman, Mr. Tashi, advisors, Messrs. Kasai, Nakagawa (nozomu) and Tokugawa, vice-chairmen, Messrs. Nakagawa and Aoki, directors, Messrs. Kimura, Shimada, Masuike, Nakagawa (sumi) and Ogawa, the regular meeting of directors was held; whereby the regulation of National Council Member of Social Welfare and also the regulation of Welfare Work Committee which had been already approved at department chief meeting the other day were deliberated and approved. The regulations are supposed to be delivered to To, Do, Fu and Prefectures.

o The Fifth National Woman Minsei (Jido) - Iin Conference

Under the auspices of National Council of Social Welfare, the said conference had been decided to open on 29, 30, 31 March at Central Social Hall located in Harajuku, Tokyo-To.

o Badge of Social Welfare Council

With strengthening of the activity of social welfare council, the request to set up the badge has been expressed from various concerns.

From the stand of this council the badges as the separate sheet have been designed, however, as it deems the best way to decide it formally taking your opinion, please deliver your opinions according to the following;

1. What is the best one among six designs inserted in the attached sheet No. 1.
2. What is your suggestion on making the partial changes of the design you choose?

中央社会福祉協議会会章案 NATIONAL COUNCIL OF SOCIAL WELFARE



ソシアル・ウエルフェア  
の縮字 S.W.を社会に  
照る光に見立てる  
The mark, consisting of S and W  
(social work) symbolizes a fire  
that gleams over the society.

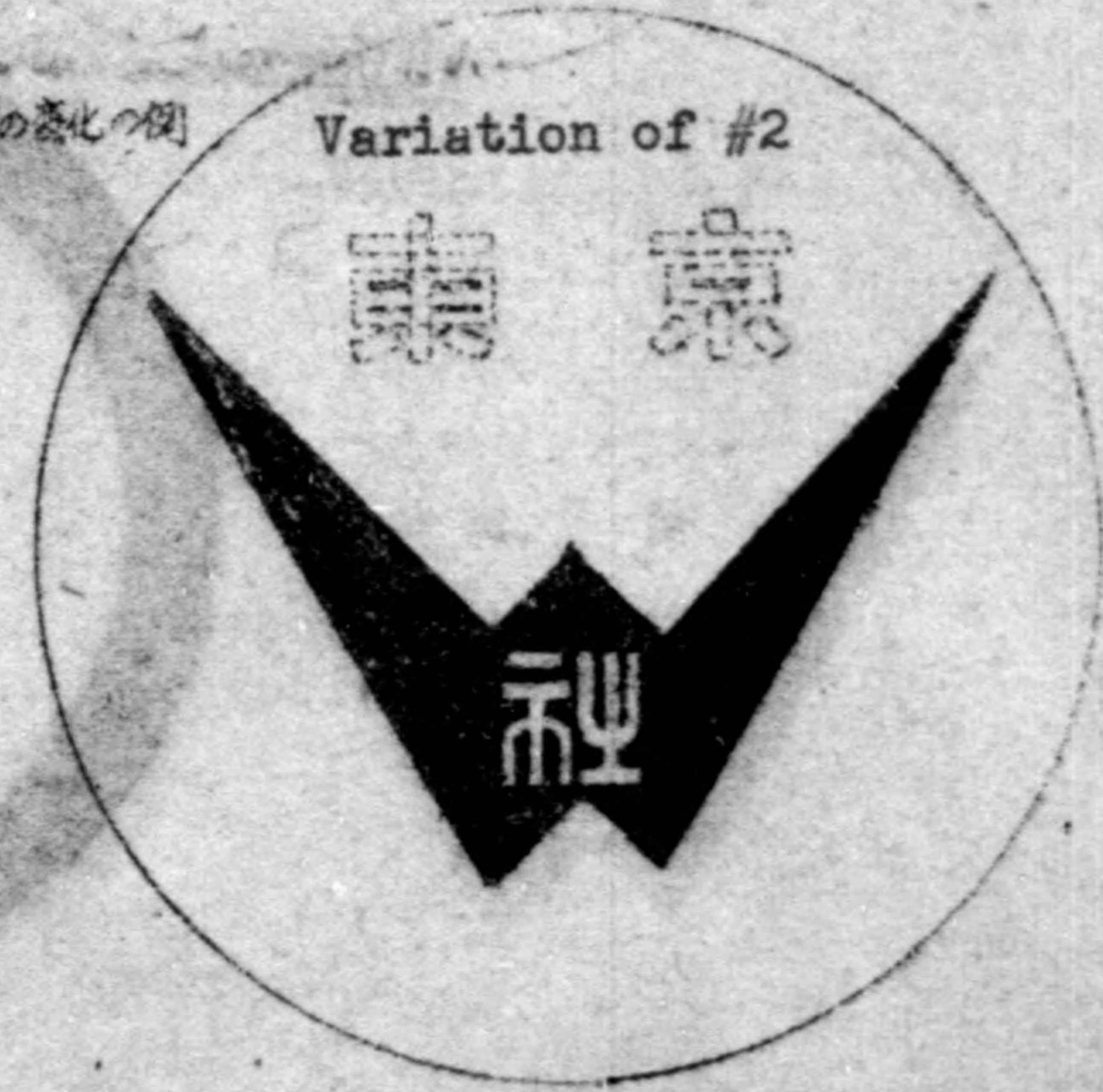


N.C.S.Wの組合せ  
希望と表はす  
The mark, consisting of NCSW  
symbolizes hope.

In case of 地方地区の場合は  
local area, 中央社会福祉協議会とする  
it shall be  
XXXXX Social Welfare  
Council

1の变化の例(会章、スタンプ、一般用) 対外  
Variation of No. 1 関係用  
(for flag or stamp) For foreign  
relation

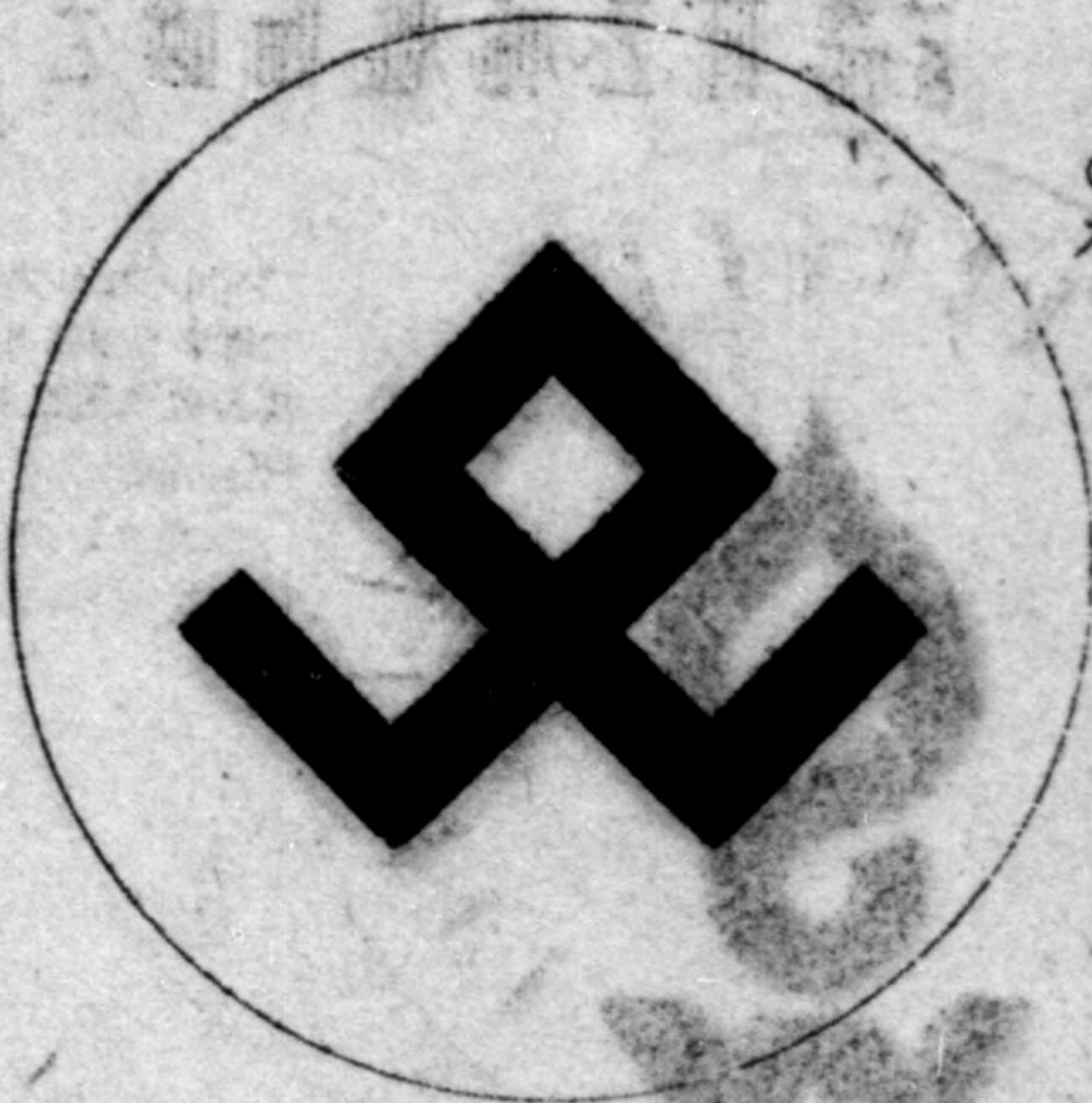
3  
2の变化の例  
Variation of #2





聖なるN.C.S.W.

Holly NCSW



C.S.W.の組合せ  
不屈の精神

The mark, consisting  
of CSW symbolizes  
dauntless spirit.

W.Sの組合せ



NCSWの組合せ  
相互扶助  
The mark, consist  
NCSW symbolizes  
mutual aid.



NATIONAL COUNCIL  
OF SOCIAL WELFARE  
JAPAN

Notify to:

#266, 3-chome, Harajuku, Shibuya-ku, Tokyo-To  
Public Relation Department of National Council of Social Welfare

o Study Meeting in Reference to Social Work Bank

In reference to realizing the social work bank to be established in the conference room of National Council of Social Welfare, the study meeting was held with Mr. Fujisawa, professor of Commercial University, as a leader in order to set up "Social Work Bank Establishment Essentials", on 24 February from 10 a.m. From the part of the persons concerned with social work, Messrs. Shimomatsu, Tamba, and Satake, and also Mr. Aoki, Bureau Chief, Mr. Sano, Institution Department Chief and other represented from National Council attended there.

The pivotal points deliberated were the following;

1. To make the bank independent
2. Relationship to the constitution of Japan, Art. 89
3. Problem of this bank, utilizing "Private School Encouragement Fund Law" as the reference
4. Problem of permanency with development of private social work and also the facing problem as to establishment of bank including the endowment fund would be proposed to the national subsidy through the political means.

o Bloc-Meeting

Dividing the whole country into seven blocs General Affairs Department of National Council of Social Welfare is now under consideration to have the bloc-meeting in very near future.

Tohoku, Hokkaido, Kanto, Chubu, Kinki, Chugoku, Shikoku and Kyushu.

o Report Meeting of Mr. Takada, Bureau Chief

Having attended to the Over-all United States Child Welfare Conference, Mr. Takada, Children Bureau chief gave a lecture on impression of America at a welcome party sponsored by National Council of Social Welfare and Community Chest Central Committee.

o Children's Day and Mothers' Day Managers Meeting

Children's Day managers meeting on 28 February and also Mothers' Day managers meeting on 2 March were supposed to be held respectively at the conference room of National Council of Social Welfare, in order to review the planning of program for this year.

o Favor of Mr. Willson

Mr. Willson who took an active part in PHW right after the war still has a great interest in social welfare in Japan while he is now working at American Disabled Persons Association; he sent a letter to Mr. Aoki, General Secretary.

Dear Mr. Aoki,

Recently I had a chance to talk with Mrs. T.M. Small, General Affairs vice-president of International Child Welfare Federation located in Ave. 16, Mont Blanc Geneva, Switzerland.

International Child Welfare Federation is a famous agency <sup>from the viewpoint of</sup> among various spheres. Mrs. Small asked me whether or not there is any Child Welfare Agency in Japan which shows an interest in joining International Child Welfare Federation. Telling her your name I gave the suggestion on making contact with you. As I know a little about the splendid achievements done by International Child Welfare Federation I finally believe that this Federation will certainly contribute to Child Welfare Work in Japan.

Disabled Persons Association

WILLSON

o Study Meeting of Child Welfare Officials

The regular meeting of Central Child Welfare Study for February was held on 22 February at Mothers & Children Care-Taking Meeting (Boshiaiiku-Kai) which is the synthetic study organ of mothers and children hygiene.

o Publication

"Social Welfare Bulletin" (January issue) and its supplement, "Handbook for Social Welfare Secretary" were delivered on 19 February and 17 February respectively to various concerns.

"Handbook of Disabled Persons Welfare Law" compiled by Rehabilitation Section, Social Affairs Bureau, Welfare Ministry, was decided to publish.

o Communication from Mr. Maki, Director

Mr. Maki, Director, now in U.S.A. sent us a letter stating that he landed on San Francisco, visited Community Chest Committee and also Social



Welfare Council on 15, in the said location on 18, arrived at Washington, and that both Mr. Yoshimi, Welfare Ministry, Nursing Section Chief, and Mr. Iwase, Aichi Pref. Welfare Department Chief, accompanied with him are fine.

o Problem of Bengendcin

The request on taking some strong measures regarding prohibition of Bengendcin manufacture or to put a limitation on its manufacture and sale, had been earnestly expressed. This council, therefore, securing the joint references with co-operation of child welfare center, reformatory and juvenile detention home, submitted a petition to the Diet on 28 February.

o Social Welfare Work Law

Social Work Basic Law had been deliberated by the joint meeting of public and private social welfare quite a while; on 28 February, decided its final draft, on 2 March, approved by a Cabinet Council, and supposed to be submitted to the tenth Diet.

This draft was revised to call "Social Welfare Work Law" and composed of 9 chapter and 89 articles.

- 1 chapter            General Provision
- 2 chapter            Social Welfare Council
- 3 chapter            Offices Regarding Welfare
- 4 chapter            Social Welfare Secretary
- 5 chapter            Guidance, Supervision and Training
- 6 chapter            Social Welfare Juridical Person
- 7 chapter            Social Welfare Work
- 8 chapter            Community Chest and Social Welfare Council
- 9 chapter            Miscellaneous Provision

\*\*\*\*\*

1. 600 copies of this report are delivered to the following:

- o To, Do, Fu Pref. governor, vice governor, Welfare Department Chief, Social Affairs Section Chief and Children's Section Chief.
- o Over-all Community Chest Committees, Social Welfare Councils or S.W.C. preparatory offices.
- o Main newspaper offices
- o Welfare Ministry, Social Affairs Bureau, Children's Bureau and each section chief, PHW, and Regional Civil Affairs.

2. Please send a manuscript in reference to the organized condition of local councils and other news in order to notify to whole the country.

3. Please notify on budget of each council, allocation from Community Chest, income from prefecture or others, to Public Relation Department as soon as possible.

4. Please let us know your opinion concerning this report without any hesitation.

5. In case the problem of council is appeared in the press or communication magazine please send it to Research and Planning Department.

Public Relation Department

NEGISHI

Shioiri/es

From Tokyo-To Welfare NewsThe Formation of Preparatory Council for  
Establishment of Social Welfare Council

As to the establishment of Tokyo-To Social Welfare Council, the first consultation meeting was held on November 7 calling the representatives of civil bodies by chief of Welfare Bureau, after that conferences have been carried out by the concerned, and the opportunity of formation of the council has reached within the possibility. At least, the preparatory council for the establishment of social welfare council was formed with the approval of all attendants at Kanda-Minsei-Kan on December 5.

This preparatory council contained 7 standing committees and secretaries by which the business of preparation for the establishment of council will be done. Since the time, having been made the preparation subsequently by this organ, draft of the articles will be completed during December, so the formation of council will be seen by the beginning of new year.

If this council is established, the organized relation on both public and private social welfare work and welfare committee's work will be maintained and the propulsion of welfare work individualized will be anticipated.

Nakayama/tn

REGULATION OF TOKYO-TO SOCIAL WELFARE COUNCIL

Tokyo-To

CHAPTER 1: Name and Office

(Name)

Article 1: This council shall be named Tokyo-To Social Welfare Council.

(Office)

Article 2: This council shall be established its office at No.14, 3-chome, Marunouchi, Chiyoda-ku.

CHAPTER 2: Purport and Program

(Purport)

Article 3: The purport of this council shall be to promote the social welfare through accelerating efficient operation and organized activities of the social welfare program in Tokyo.

(Program)

Article 4: For the accomplishment of the above purport, this council shall execute the following programs:

1. Liaison and comprehensive projecting in reference to the social welfare program.
2. Research, study and guidance in reference to the social welfare program.
3. Liaison and encouragement to the administrative organ, social welfare work institution and social welfare volunteers' organization.
4. Liaison to local social welfare councils.
5. Enlightenment and publicity of the social welfare work.
6. Development and in-service training of those engaging in the social welfare program.
7. Raise and adjustment of the social welfare work funds.
8. Other necessary work to achieve the purpose of this council.

CHAPTER 3: Membership

(Qualification of the Membership)

Article 5: The membership of this council shall be comprised of the following two kinds:

1. Those coming under the following items with the approval of the board of directors.
  - a) Private social welfare work agencies
  - b) Tokyo-To Community Chest Committee
  - c) Persons concerned with the social welfare work in Tokyo-To Government
  - d) District social welfare council
  - e) Organization concerned with the social welfare
2. The learned and experienced persons recommended by the board of directors.

(Membership Fee)

Article 6: A member coming under No.1 of the preceding article shall pay the fee in the manner prescribed separately.

(Retirement)

Article 7: A member shall be regarded as retired in the following events:

1. In case the person has asked for such.
2. Dissolution or death.

(Expulsion)

Article 8: If a member has defamed this council or has acted against its policy and purport, he may be dismissed upon resolution of the board of directors.

CHAPTER 4: Staff

(Classification and Quorum of Staff)

Article 9: The following staff members shall be established in this council:

Managing Director	1
Vice-managing Director	Within 3
Standing Director	1
Director	Several
Inspector	2

(Nomination of Staff)

Article 10: The chairman, the vice-chairman, and the standing director shall be chosen by mutual vote of the board of directors.

2. The directors and the inspector shall be chosen from among the members.

(Function of Staff)

Article 11: The chairman shall represent this council and control the council business.

2. The vice-chairman shall assist the chairman; and in an unavoidable circumstance, he delegates the chairman's functions.
3. The standing director shall discharge the council business.
4. The directors shall organize the board of directors and execute the program.
5. The inspector shall execute the following functions:
  1. To inspect the status of property.
  2. To inspect the status of business execution of the directors.
  3. To report to the staff meeting or the administration office in respect to the status of the property or business execution, upon necessity.
  4. To convoke the staff meeting when necessitated in order to make reports according to the preceding item.

(Tenure and Supplementation)

Article 12: The tenure of the staff member shall be two years, provided that he may be renominated.

2. The tenure of the staff member nominated to supplement a predecessor shall be the rest of the predecessor's tenure.
3. The staff member shall, even after the expiration of his tenure, continue his function until a successor takes his post.
4. The staff member nominated under Article 5, No.1, 3, shall continue his function until he terminates his tenure.

(Advisor)

Article 13: The advisor may be placed in this council.

2. The advisor shall be entrusted by the chairman upon recommendation of the board of directors.
3. The advisor shall respond the chairman's inquiries in respect to the important matters.

CHAPTER 5: Meeting

(Classification of Meeting)

Article 14: Meetings shall be classified into two categories, the staff meeting and the board of directors meeting.

(Convokation)

Article 15: The Managing Director shall convoke a meeting.

2. The Managing Director shall convoke a meeting when requested by more than one-fifth of the directors or the staff members under joint signature with indication of the purport of the meeting.

(Chairman of Staff Meeting)

Article 16: The chairman shall be established in the staff meeting.

2. The chairman shall be chosen from among members in the staff meeting.
3. The chairman's tenure shall be one year, provided that he may be renominated.
4. The chairman of the staff meeting may express his opinion attending to the board of directors meeting.

(Session)

Article 17: The staff meeting shall be held twice a year, provided that it may be held upon necessary occasions.

2. The board of directors meeting shall be held whenever the necessary occasions happen.

(Quorum)

Article 18: The meeting shall not be held unless more than one-half of the composing members is present, provided that this provision shall not be applicable when the meeting is convoked for resumption.

(Manner of Resolution)

Article 19: The resolution of the meeting shall be made upon consent of the majority; in the event pros and cons are equal, the chairman shall make decision.

(Authority of the Board of Directors)

Article 20: The board of directors shall decide the following matters

in addition to those prescribed in this regulation:

1. To set up the planning of project
2. Matters to be presented to the staff meeting
3. Execution of the matters decided by the staff meeting

(Function of the Staff Meeting)

Article 21: The staff meeting shall decide the following matters:

1. Planning of project
2. Revision of the regulation and resolution
3. Disposition of property
4. Budget and settlement
5. Other necessary matters

#### CHAPTER 6: Committee Meeting

(Classification of Committee Meeting)

Article 22: In order to research and study the social welfare work there shall be set up the committee meeting according to the type of work.

2. The members shall belong to the committee meeting
3. There shall be established the chairman who shall be chosen from among the members
4. In the committee meeting those other than members may attend, upon necessity.
5. The detailed regulation of the committee meeting shall be decided by the staff meeting.

#### CHAPTER 7: Administration Office

(Administration Office)

Article 23: Administration Office shall be established in order to execute the council business.

2. The regulation of the administration office shall be decided through the approval of the staff meeting.

#### CHAPTER 8: Asset and Account

(Classification of Asset)

Article 24: The asset of this council shall be comprised of the following:

1. Membership's fee



2. Money and articles contributed.
3. Income derived from the entrusted work.
4. Income derived from other means.

(Payment of Expenditure)  
Article 25: The expenditure of this council shall be paid out of the asset.

(Budget and Settlement)  
Article 26: The budget for annual income and expenditure of this council shall be fixed prior to the starting of each fiscal year; the accounting settlement of annual income and expenditure shall be presented, through review of inspectors, to the staff meeting with the catalogue of property as of the termination of the fiscal year.

(Fiscal Year)  
Article 27: The fiscal year of this council shall commence, each year, on the first of April and end on the thirty-first of March.

List of Council Members

## Tokyo-To Social Welfare Council

Managing Director	Chief, Tokyo-To Social Work Association	Yasunori Yamaguchi
Vice-Managing Director	Chief, Tokyo-To Minsei-iin Federation	Kiyosuke Masuike
"	Former Vice-Governor	Fumio Yamada
"	Vice-Chief, Tokyo-To Saisei-Kai	Seiji Uehira
Standing Director	Chief, Tokyo-To Minsei-iin Federation	Kiyosuke Masuike
Director	Chief, Tokyo-To Welfare Bureau	Hideichi Isomura
"	Chief, General Affairs Section, To Welfare Bureau	Kazunori Miki
"	Chief, Tokyo-To Home for Aged	Yoshio Kurokawa
"	Chief, Administration Office, Japan Red Cross Tokyo Branch	Shigeru Tokuda
"	Chief, Administration Office, Tokyo-To Community Chest Committee	Torao Murata
Inspector	Standing Director, Tokyo-To Social Work Association	Kanzo Kawaguchi
"	Vice-Chief, Tokyo-To Minsei-iin Federation	Kakuzo Tanaka
Chairman & Representative of the Council	Chief, Tokyo-To Doho Engo-Kai	Seiichi Kiyose
Advisor	Tokyo-To Governor	Seiichiro Yasui
"	Chief, Tokyo-To Community Chest Committee	Ryutaro Takahashi

Nakayama/tn

Tokyo-To Social Welfare Council #7

Date: 15 March 1951

To: Chief, Public Welfare Section, KaCAR

From: Yasunori Yamaguchi, Managing Director  
Tokyo-To Social Welfare Council

Re: Commemorate Meeting for Formation of Tokyo-To Social Welfare Council

Aiming at development of social welfare through promoting the effective management and organizational function of social welfare work in Tokyo-To, the Tokyo-To Social Welfare Council has been established. In order to commemorate its establishment, with expectation of enlightenment and publicity in reference to local social welfare in addition to the accomplishment of the purpose of this council, the commemorate meeting for formation is desired to be held according to the outline of the attached sheet.

I hereby cordially ask for your presence and your speech for encouragement, with full understanding of the purport of this meeting.

Nakayama/tn

Outline of Commemorate Meeting for Formation of Tokyo-To Social Welfare Council

1. Purpose: In addition to the announcement of the formation of the Tokyo-To Social Welfare Council, it aims at the promotion of the district social welfare which is the ultimate object of this council through enlightenment and publicity regarding the district social welfare work.
2. Date of Opening: 29 March 1950 - 1 p.m. - 4 p.m.
3. Place: Chuo University Auditorium located at #9, 3-chome Kanda, Surugadai, Chuo-Ku, Tokyo
4. Sponsored by: Tokyo-To and Tokyo-To Social Welfare Council
5. Participator:
 

Chief of Public and Private Social Work Organization (Institution) in Tokyo-To	1000 persons
Minsei-iin, Standing-iin & Vice-standing-iin	700 "
Official concerned with the council members and other invited guest	300 "
	Total 2000 persons

6. ProgramPart 1

Opening Address	Administration Office Chief
Greeting	Governor, Managing Director & Wel Bureau Chief
Report on Progress	Standing Director
Declaration	Chairman of Staff Meeting
Congratulation Address by Invited Guest	Chief, Public Welfare Section, KaCAR Minister of Welfare Chief, National Council of Social Welfare Chief, Tokyo-To Social Welfare Council
Closing Address	General Affairs Department Chief

Recess

Part 2

Movie

Produced by Tokyo-To  
Produced by Shintocho

"Tokyo News" No. 14  
"Children at Hachinosu Since then"

*Shizuoka Pref.*

Nakayama/rn

PREPARATION OF ESTABLISHING SOCIAL WELFARE COUNCILSHIZUOKA PREFECTURE

The movement of three bodies in the center, such as Japan Social Work Association, All Japan Minsei-iin Federation, and Doho Engo Kai, has immediately influenced upon the local movement; in our prefecture, Shizuoka Prefectural Social Work Association, Shizuoka Prefectural Minsei-iin Federation, Shizuoka Prefectural Doho Engo Kai and Shizuoka Prefectural Workshop Operation Federation took initiative, with support of the prefecture, to study the organizing of social welfare activities, and, last October, decided to establish Shizuoka Prefectural Social Welfare Council. Seven preparatory meetings have been held; and on 25 December 1950, held was a meeting of sponsorers, to sanction:

Statement on Purport of Establishing Shizuoka Prefectural Social Welfare Council.

Regulations of Shizuoka Prefectural Social Welfare Council.

Draft of Principles of Activities of Shizuoka Prefectural Social Welfare Council.

Draft of Membership Fee Collection District of Shizuoka Prefectural Social Welfare Council.

As separate papers; and invitations were sent to possible members notifying the schedule to have an inauguration meeting at Shizuoka City Auditorium, 1.p.m., 20 February, and it is ready to accept applications for memberships.

Nakayama/rn

Shizuoka Prefecture Social Welfare Council Membership Fee Collection District (Draft)

1. Individual (Minsei-in, Jido-in, Prevention Officer, Social Welfare Volunteer, Official in charge of Social Welfare, and learned and qualified person)  
(Annual amount) ¥100 per person.
2. Organization concerned with social welfare.  
(Annual amount) ¥300
3. Public or Private Social Welfare Work Institution.
  - a. Concerning Day-nursery.
 

Inmates	Monthly average	Under 50	(Annual amount)	¥300
"	"	51 - 100	"	¥500
"	"	101 - 150	"	¥700
"	"	Over 151	"	¥1,000
4. Gun and City Social Welfare Council.
  - a. Gun Council
 

Komo, Ihara, Abe, Haibara and Shuchi (Annual amount) ¥300  
Nishito, Iwata and Shida (Annual amount) ¥1,000  
Takata, Sunto, Fuji and Ogasa (Annual amount) ¥500
  - b. City Council
 

Atami, Ito, Mishima, Yoshiwara, Fujinomiya, Shimata and Iwata.  
(Annual amount) ¥500

Shizuoka, Hamamatsu, Numazu, and Shimizu (Annual amount) ¥1,000

Obana/es

Shizuoka Pref. Social Welfare Council RegulationCHAPTER 7.

## Property and Accounts

## (Types of property)

1. Properties which were the contributions received at the time of establishment and entered in separate sheet property list.
2. Membership fee and other funds obtained.
3. Money and material contributions.
4. Income from the properties.
5. Income from the business.
6. Other incomes.

## (Payment of expenditures)

Expenditure of this council is paid with the properties.

## (Supervision of property)

The properties are supervised by the chairman, and its method will be decided by the resolution of the deligated committee.

## (Custody of cash)

The cash properties of this council will be put in savings account at the post office or finance trust company. Or kept in national bonds or securities. The real estate can be purchased or sold, provided, it has the deligated committee's resolution.

## (Surplus fund)

If there is any surplus fund at the end of fiscal year, the whole amount or a part of it can be carried forward to the next fiscal year or lay aside as reserve fund, with the resolution of the deligated committee.

## (Budget and account settlement)

The income and expenditure budget of each financial fiscal year of this council will be submitted to the general meeting after the resolution of the deligated committee. The income and expenditure account settlement will receive inspection of the suprintendent;

at the same time with the property list of the fiscal year ending, after the completion of its fiscal year. And submitted to the general meeting for its recognition, after the approval by the deligated committee.

(Special Account)

With the resolution of the deligated committee the special account can be established in this council.

(Financial Fiscal Year)

The financial fiscal year of this council will begin from April 1 and end at March 31.

The receipts and disbursements will be closed at May 31 of next fiscal year.



Kamimura/rn

Picked up from Nagano  
Prefectural Gazette (Dec.)THE FIRST SOCIAL GENERAL MEETING CLOSED

- o All Power Concentrated in Livelihood Stabilization for the Promotion of Social Welfare.

Nagano-Ken Social Work General Meeting was held at the Ueda Municipal Public Hall on November 1st and 2nd under the joint sponsorship of the prefecture, the Prefectural Social Welfare Work Association and Ueda Municipal Office.

- o More than one Thousand People Attended Negotiation and Deliberation Done by each Assembly.

More than one thousand people, including the people concerned with public and private social work agencies, Minsei-iin the people concerned with welfare work in city, town and village, personnel of Chiho-Jimusho, etc.

- o As for attendants from central offices are as follows:

Mr. Kimura, Social Affairs Bureau Chief (Acting for Minister of Welfare)  
Mr. Maki, Standing director of the Japan Social Work Association and others.

- o From the Prefecture:

Mr. Katagiri, Chairman of the Prefectural Assembly.  
Mr. Aoki, Chairman of the Social Affairs Committee of the Prefectural Assembly and others.  
Accidentally a bust of late Dr. Shigejiro Ogawa was completed just before the event. Dr. Ogawa born in this prefecture was a founder of Homen-iin system. So it was impressional matter that open ceremony of his bust was held on the same day of the meeting.

Before getting into the proceedings, a congratulatory address of Chairman Matsubashi, greetings of Governor Hayashi and of Minister of Welfare were announced, the official commendations for the meritorious persons were rendered and the congratulatory addresses of the guests and the addresses of thanks of the recommended persons were presented.  
Mr. Matsubashi Chief Director of the Prefectural Social Welfare Council for chairman of the General Assembly and Mr. Miyazawa, Welfare Dept. Chief of the prefecture and Mr. Koide, Assistant Chief Director of the Prefectural Social Welfare Council, for the Vice-Chairmen were unanimously elected respectively.

Then Chairman Matsubashi took his seat and the proceedings were carried on. "Address of thanks to LARA" and "address of thanks to UNICEF" were decided after deliberation and other matters were decided to be discussed at each assembly and chairman and vice-chairman of each assembly were elected.

Every assembly had a meeting at each assembly's meeting place from 1 o'clock of November 1.

<u>Name of assembly</u>	<u>Chairman</u>	<u>Vice-Chairman</u>
The First Assembly (Subject: Problem of duties and activities of the social welfare secretaries)	Kennosuke Kiyono	Ryohei Kakegawa
The Second Assembly (Subject: Concerning the various problems of legal assistance)	Matora Shimizu	Hideo Hashizume
The Third Assembly (Subject: Problem of socialization of social work and of consolidation of Social work bodies)	Jho-on Yokouchi	Otosaburo Wakabayashi
The Fourth Assembly (Subject: The various problems concerning finance of social work)	Yuei Nagaiwa	Ryusei Washimori

Attitude of discussion at every assembly is very serious: Someone revealed real situation, someone cried improvement in the government agencies, someone called for the counter measures, someone made a motion to submit opinion to the Government, etc., etc.,

Thus the various urgent problems were discussed in every detail. Those opinions were gathered by each assembly and reported to the general assembly session on the 2nd, and the measures of proposal or decision were taken according to the nature of each opinion.

On the second day, we had a lecture called "Concerning Social Security System" by Dr. Suetaka and all the audience had very deep impressions. Then Vice-Chairman Koide took the chairman's seat and the proceedings were carried on. Proceedings at each assembly were reported by chairman of each assembly and decided to be discussed at general assembly for decision.

The assembly closed the session at noon, with the persons concerned obtaining future principles.

The matters discussed and the matters decided are as follows:

o The First Assembly

Matters discussed

Problem concerning duties and activities of social welfare secretaries.

Matters decided

1. In order to expect smooth achievement of the duties of social welfare secretaries, it is necessary to have cooperation of the private social workers needless to speak that of Minsei-iin.
2. Basic idea of Minsei-iin system should have strong influence to the Social Welfare Work Fundamental Law.
3. Adequate remuneration should be considered for the social welfare secretaries, so that proper persons can be obtained for the positions.
4. In order to let them achieve the duties of the social welfare secretaries,

personal and administrative expenses for them should be paid out of national treasury, needless to say that they must be full time officials.

*What brought about such consideration originally?*

5. The problem to consolidate child welfare officials and physically handicapped persons welfare officials into single welfare secretaries and to increase the number is under examination. But as it seems necessary to make further study, we want the Government as well as prefecture to make thorough study on the problem.
6. To establish autonomous studying organ of social welfare secretaries in every Gun and city and gradually make it be prefectural organization.

*Just Don't heard of this combination. Can't see the advantage.*

ANTI-POVERTY PROGRAM TO BE REALIZED IMMEDIATELY

- o Advice and Recommendation System Called For
- o The Second Assembly  
Matters discussed  
Various problems concerning legal assistance.
- o Matters decided
- 1. Matters concerning livelihood assistance

1. (1) Immediate realization of anti-poverty program towards #2 type card people.
- (2) Simplification of administrative work in city, town and village office.
- (3) Prompt approval of rehabilitation fund loan and increasing of the fund.
- (4) As for granting of artificial nutrition expenses under DLSP, an assistance classification shall be established as an artificial nutrition assistance.
- (5) Raising of limitation of education assistance and timely grant.

*what's this?*

- o Collateral matters decided.
- (6) Establishment of commissioners' systems which should give necessary advice and recommendation to the enforcement organs of DLSP, child Welfare Law and Physically Disabled Persons Welfare Law.
- (7) Immediate realization of social security system.
- (8) Legal punishment should be conflicted upon the husbands who wish throw their wives and children, for such deeds should not be allowed from the view point of morality.

*what's this? Mention again?*

2. Matters concerning child welfare
  - (1) Child welfare institutions  
More establishment of welfare institutions for special children and enlargement and repairing of the facilities.
  - (2) As for mid night work of the minors, surveillance under the Labor Standard Law and the Child Welfare Law should be strengthened.

*No mention of improving standards of care.*

1. No mention of segregation of those in institutions such as feeble-minded from normal & delinquent from sub-normal as exists in several institutions.
2. No mention of emphasis on foster home placement & less institutionalization.

3. Matters concerning the Physically Disabled Persons Welfare Law

*Why not more emphasis on occupational training for disabled?*

- (1) Increasing of manufacturing plants of artificial legs and arms for the physically disabled.
- (2) Discount of the Government Railway's fare for the physically disabled should be given even if they have no company.

*Why? Why?*

EDUCATION FOR SOCIAL WORK ALSO NEEDED

- o The Third Assembly  
Matters discussed  
Problem of socialization of social work.
- o Matters decided

Social work should not be the work for the special persons but should be carried on under the responsibility and the realization of the people at large, so that the prefectural authorities and the Social Welfare Work Ass'n should endeavour to propagate the above mentioned idea to the people of the prefecture. The following matters should be realized for the purpose of the above mentioned propagation.

*Probably included in regular curriculum*

(1) To take contact with primary, middle and high schools and let them adopt the problem of social work for the lessons of the social affairs for the enlightenment of the students. — *Junior Mensai-in again?*

(2) To let municipal, town or village "Komin-Kan" adopt the problems of social work for the various events so that the idea of social work will be propagated to the people at large.

(3) To publish an organ devoted to the social work.

(4) Propagation and publicity through the means of radio broadcast, motion picture, stereopticon slides, paper show and others.

*Good if courses practical.*

(5) To submit a proposal of new establishment of social work dept. or social work lecture course in Shinshu University to the competent offices so that the abilities of persons engaged in social work will be raised and social work will be developed.

*Yes!*

(6) To separate the private social work from the public social work so that the primary functions of the private social work will be able to be fully displayed. *Good, but lines of distinction between public & private should be clearly defined*

(7) The Prefectural Social Work Ass'n should assist the private social work bodies so that they will be able to get full time workers easily.

- o The Fourth Assembly  
Matters discussed  
Various problems concerning the finance of the social work.
- o Matters decided

*Why?*

1. Expenses for welfare measures under the Child Welfare Law should be given as special subsidy separately from the "equalization subsidy".
2. Scope of shows managed by social work bodies and remission of taxation for donation should be enlarged.
3. Form of community chest should be fixed according to each provincial situation.
4. As for distribution of collected money by community chest, the opinion of municipal, town and village community chest committee should have priority.

*no*

Shizuoka Pref. Welfare News (Nov. 1950)

Obana/es

The Aim of Social Welfare Council

At the International Social Work Conference in Paris, in July of this year (1950), the Japanese representative submitted the definition of social work as reflected in Japan, by the request of this conference. (This was not as a definition, but as the current of opinion.) It stated "The social work is socially organized activity to promote the protection, or to deal individually or by groups for the purpose of assisting the individuals or families whose living have or is falling lower than the normal standards to recover or to preserve by the national, public or private organizations, supplementing or representing the social insurance, public health, education and others which are for the promotion of social welfare for the people in general." It is in very wide comprehensive term, but would like to call attention to the term "socially organized activity."

The kind of social work primarily giving charitable relief to the people is now in the past. As in the Art. 25 of the Constitution the minimum living standard of the citizens are guaranteed by the nation, along with the various social security systems. On the other hand, as the citizens living in same society as human beings, we must make effort to contribute to the welfare of the society in its districts, whether it be large or small. It is the responsibility and duty of the social being in the democratic society.

For this reason it is an excellent method and also necessary to plan for the welfare of the people of community in the districts they live, under the well organized and planned activities in each districts, rather than individuals working in their own methods, or for the certain limited objects. And this must be the characteristic of the present social welfare work, stated at the beginning.

As the result of the emphasis placed on the public assistances, the trend toward officialism and centralization is being considered. But organization of a sound council, inclusive of the representatives of various grades and classes of its districts, to contribute for the democratic operation of public assistances shall be well worth expecting from the organization of its district society.

At present time the central government have established "Social Welfare Council Preparatory Office" in various preparation for the establishment of "Central Social Welfare Council." And at this prefecture level, the representatives of the Social Work Council, Minsei-iin Federation and National Relief Ass'n and other organizations concerned have been making progress toward organization of "Shizuoka Prefectural Social Welfare Council," and the materialization of it shall be in the near future.

At the National Social Work Conference, held other day, the special group meeting was held to discuss "Organizational problems of social districts," as it did last year. Therefore it is evident the future of the work in this field will show marked progress in this advancing Japan. And we hope to see the establishment of the council in every towns and villages of this prefecture, for the promotion of the welfare of social districts.

Nomura/es/rn

Materials Relative to Social Welfare Council

1. Fundamentals in Organizing Social Welfare Councils
2. Plan of Central Social Welfare Council
3. Plan of To, Do, Fu and Prefectural Social Welfare Councils
4. Plan of Gun (and Large City) Social Welfare Councils
5. Plan of City, Town and Village Social Welfare Councils
6. Organizational Chart of Central, and To, Do, Fu and Prefectural, Social Welfare Councils
7. Articles of To, Do, Fu or Prefectural Social Welfare Council (Draft)
8. Concerning Social Welfare Council Preparatory Business Bureau

\* \* \* \* \*

1. Fundamentals in Organizing Social Welfare CouncilsPlanned by Social Welfare Council  
Preparatory Business Bureau

a. The social welfare council is a voluntary, civil organization formed in a local community by those, publicly or privately, who are concerned in social welfare work with the view of assisting in the development of social welfare work and improving the welfare of the local community by means of investigations, conferences and plannings over imminent problems of social welfare and by trying every possible means necessary for their practice.

b. The social welfare council shall be organized both in the Centre and in each To, Do, Fu and prefecture, and it is desirable that the council should, as occasion calls, be organized in each city, ward, town, village and Gun (district under the jurisdiction of Chiho Jimusho, or, in future, social welfare district) and the like. In that case, it is to be hoped that a close cooperation should be kept between the council of a lower district and the council of an upper district.

c. The social welfare council should by no means be organized all together in every district mechanically and perfunctorily. Since the council is to be voluntarily organized with full understanding and willingness on the part of those who are concerned, it is to be organized one by one only in districts where the time is ripe for its organization. The first requisite is, therefore, to create an atmosphere favourable to it.

- learned and experienced persons*
- d. The social welfare council must be composed of professionals and non-professionals from all quarters, such as representatives for public and private social welfare work agencies and organizations, representatives for government and public offices concerned, Minsei-iin, protection officers, representatives for organizations and agencies concerned in social welfare, as political, economic, educational, cultural, labour and journalistic ones, persons interested, ~~learned, and experienced~~ in the social welfare, <sup>etc.</sup>
- e. It is natural that the predominant constituent of the council should differ with districts: For example, in districts of prefectural size the chief component of the council will be experts, as representatives for social welfare work institutions and organizations and those of Minsei-iin; while, in councils of smaller cities, towns and villages the members will be composed of as many non-experts as possible from various quarters, <sup>beside</sup> ~~as well as of Minsei-iin~~ <sup>as their</sup> "body."
- f. In view of its objective, ~~of~~ "improvement of social welfare" and its character ~~of~~ citizens' organization, the social welfare council naturally should have close, or rather direct, connection with the community chest. Accordingly, it is to be hoped that an organization like liaison committee should be formed between the two for their collaboration in such fields of activity as investigation, propagation and enlightenment.
- g. It is to be hoped that the social welfare council should be joined at least by recipient agencies and organizations of the community chest without <sup>without</sup> omission and coercion.
- h. While the social welfare council is, as mentioned above, to be joined by representatives for government and public institutions and administrative organs, the government and public authorities concerned must avoid being installed in important positions of the board in command of the council.
- i. In the same sense, it is desirable that the office of a social welfare council should be kept away from government and public office buildings.
- j. The social welfare council should not directly manage service agencies concerning social welfare work. In smaller districts, however, as towns and villages, it may be natural that the council should take the responsibility of guidance in practical activities, as outside-law relief work, betterment of living, health and sanitation, improvement of facilities for recreation, etc.
- k. The social welfare council of a smaller district shall act as <sup>a</sup> cooperative organization in the community chest movement, ~~in addition to~~ <sup>as well as the</sup> the above-mentioned activities.
- l. In organizing the council of smaller district, Minsei-iin and their organizations should be its sponsors and the Minsei-iin are expected to vigorously propel their voluntary service activities through the social welfare council thereafter.



m. The expenses of the social welfare council shall be met with membership fees, charges for entrusted government and public works, aids from the community chest, subscriptions and other incomes.

n. The unification of the existing liaison organizations, as the Japan Red Cross, the Minsei-iin Federation, the National Relief Association, etc., is not the same question as that of organization of the social welfare council, and so they must not be confounded. It is not always an indispensable requisite to organizing the council to unify the existing organizations. Accordingly, they may join the council without dissolution or reorganization, when independence is necessary and suitable for them; or, there can be a social welfare council in the form of a federation of various organizations concerned.

o. In organizing the social welfare council, it is necessary at first to set up a preparatory committee consisting of interested persons by which full consultations are held and necessary procedures are taken.

## 2. Plan of Central Social Welfare Council

Planned by Social Welfare Council  
Preparatory Business Bureau

### a. Title and Organization

This council shall be called the Central Social Welfare Council, and it shall be a juridical person.

### b. Object

This council aims at improving the social welfare by means of keeping contact among To, Do, Fu and prefectural social welfare councils and promoting the efficient management and systematic activity of social welfare work throughout the country.

### c. Activity

This council shall in general be engaged in the following activities:

- (1) Liaison and coordination among To, Do, Fu and prefectural social welfare councils.
- (2) Liaison and comprehensive planning concerning social welfare work.
- (3) Investigation, study and guidance concerning social welfare work.
- (4) Liaison with, and fosterage of, social welfare work agencies.
- (5) Liaison with, and fosterage of, social welfare workers, as Minsei-iin, Jido-iin, etc.

- (6) Bringing up, and in-service training, of social welfare work workers.
- (7) Enlightenment and propagation concerning social welfare work.
- (8) Liaison with the Central Community Chest Committee.
- (9) Liaison with central government offices, organizations, etc.
- (10) Liaison with social welfare work organizations and workers abroad.
- (11) Improvement of the well-being of social welfare work workers.
- (12) Other activities in accordance with the object of this council.

d. Membership

This council shall be formed of the following members:

- (1) To, Do, Fu and prefectural social welfare councils.
- (2) Representatives for the bureaus and sections concerned in social welfare belonging to central administrative organs.
- (3) Learned and experienced persons.

e. Organization

(1) Board

- (a) The board of this council shall consist of the president, the vice-president, the chief of the board of directors, standing directors, directors, auditors and trustees.
- (b) This council may place advisers in the board.
- (c) The trustees shall consist of the following members:
  - 1 Delegates from To, Do, Fu and prefectural social welfare councils.
  - 2 Representatives for the bureaus and <sup>departments</sup> concerned in social welfare work, <sup>and</sup> belonging to central administrative organs, and learned and experienced persons commissioned by the president. The trustees commissioned by the president must not exceed one-third of those in accordance with the preceding item in number.

Note: Government and public officials in position of command and supervision must avoid being installed as president, vice-president, chief director or managing directors.

- (6) Bringing up, and in-service training, of social welfare work workers.
- (7) Enlightenment and propagation concerning social welfare work.
- (8) Liaison with the Central Community Chest Committee.
- (9) Liaison with central government offices, organizations, etc.
- (10) Liaison with social welfare work organizations and workers abroad.
- (11) Improvement of the well-being of social welfare work workers.
- (12) Other activities in accordance with the object of this council.

d. Membership

This council shall be formed of the following members:

- (1) To, Do, Fu and prefectural social welfare councils.
- (2) Representatives for the bureaus and sections concerned in social welfare belonging to central administrative organs.
- (3) Learned and experienced persons.

e. Organization

(1) Board

(a) The board of this council shall consist of the president, the vice-president, the chief of the board of directors, standing directors, directors, auditors and trustees.

(b) This council may place advisers in the board.

(c) The trustees shall consist of the following members:

1 Delegates from To, Do, Fu and prefectural social welfare councils.

2 Representatives for the bureaus and <sup>departments</sup> concerned in social welfare work <sup>and</sup> belonging to central administrative organs, and learned and experienced persons commissioned by the president. The trustees commissioned by the president must not exceed one-third of those in accordance with the preceding item in number.

Note: Government and public officials in position of command and supervision must avoid being installed as president, vice-president, chief director or managing directors.

(2) Technical committee

To establish a technical committee of experts in each section of the business bureau to effectively administer this council. Each technical committee shall take charge of investigation, study, consultation and planning concerning various problems in its own field, and it may set up sub-committees when necessary.

(3) Special committee

If especially necessary for the administration of this council, a special committee may be established.

(4) Liaison Committee

To establish a liaison committee to keep contact with central organizations concerned in social welfare work, such as the community chest committee, etc.

(5) Executive Bureau

To establish an executive bureau consisting of the following six departments for the execution of the business of this council.

(a) General Affairs Department

Matters concerning general affairs, accounting, conferences, committees, liaison with GHQ offices, etc.

(b) Institutions department

Matters concerning contact with, and guidance of, institutions, education and well-being of the workers, etc.

(c) Minsei-iin department

Matters concerning contact with, and guidance of, Minsei-iin and Jido-iin, and promotion of the general social welfare service activities.

(d) Children's department

Matters concerning improvement of children's general welfare, counter-measures for mothers and children, etc.

(e) Education department

Matters concerning enlightenment, propagation, publication, etc.

(f) Research department

Matters concerning investigation, study, etc.

Note: 1 In organizing departments and sections of the executive bureau, matters concerning the central community chest committee, such as the <sup>problem of</sup> ~~accompanying~~ personnel and expenditure, should preferably be consulted upon with the committee so that their respective fields of jurisdiction may be clearly distinguished and, at the same time, they can effectively cooperate with each other in the business.

2 Men of ability should be chosen as personnel of the executive bureau preferably from among persons qualified as social welfare secretaries or those experienced in social welfare work.

(6) Expenditure

To defray the expenses of this council mainly with the following incomes.

- (a) Charges on To, Do, Fu and prefectural social welfare councils.
- (b) Incomes from activities entrusted by government offices, the central community chest committee, etc.
- (c) Subscriptions and other incomes.

3. Plan of To, Do, Fu and Prefectural Social Welfare Councils

Planned by Social Welfare Council  
Preparatory Business Bureau

a. Title and Organization

This council shall be called the — To, Do, Fu or Prefectural Social Welfare Council, and it shall be a juridical person organized by the consensus of opinion on the part of those who are concerned or interested in social welfare work.

b. Object

This council aims at improving the social welfare by means of promoting the efficient management and systematic activity of social welfare work in the To, Do, Fu or prefecture.

c. Activity

This council shall in general be engaged in the following activities:

- (1) Liaison and comprehensive planning concerning social welfare work.
- (2) Investigation, study and guidance concerning social welfare work.
- (3) Liaison with, and fosterage of, social welfare work agencies.

- (4) Liaison with, and fosterage of, social welfare workers, as Minsei-iin, Jido-iin, etc.
- (5) Liaison and coordination among Gun, city, town and village social welfare councils.
- (6) Bringing up and in-service training of social welfare work workers.
- (7) Enlightenment and propagation concerning social welfare work.
- (8) Liaison with the Central Community Chest Committee.
- (9) Liaison with the prefectural government office, various organizations, etc.
- (10) Improvement of the well-being of social welfare work workers.
- (11) Other activities necessary for the achievement of the purpose of this council.

Note: This council shall not <sup>run</sup> ~~conduct~~ any general ~~social~~ welfare work agencies.

d. Membership

- (1) This council shall be formed generally of the following members:
  - (a) Public and private social welfare work institutions and organizations.
  - (b) Social welfare workers as Minsei-iin, Jido-iin, etc., or their representatives.
  - (c) Gun and city social welfare councils (or town and village social welfare councils.)
  - (d) Representatives for the departments and sections concerned in social welfare of the prefectural government office.
  - (e) Organizations concerned in social welfare.
  - (f) Learned and experienced persons.
- (2) Admission to membership can be attained after examination and recognition on the part of the board of directors or an organization commissioned by the board.
- (3) Charges on the members shall be graded according to their status.

e. Organization

## (1) Board

To place the president, the vice-president, standing directors, directors and auditors in the board of this council.

The president and the vice-president shall be recommended in the general meeting of members.

Directors shall be elected from among the members in the general meeting of members.

- (a) The number and ratio of directors shall be fixed in accordance with categories of members given under Membership.  
(e.g., one-fourth by institutions and organizations, one-fourth by Minsei-iin, etc., one-fourth by social welfare councils, and one-fourth by others.)
- (b) The president shall have his choice to place less than a third of the directors from among the members without election.
- (c) One of the directors shall be the managing director.

The managing director shall be elected from among themselves and then commissioned by the president. The managing director shall be installed as chief of the executive bureau.

Auditors shall be elected in the general meeting of members and then commissioned by the president. However, inspectors cannot hold the office of directors or personnel of this council.

Note: Government and public officials in position of command and supervision must avoid being installed as president, vice-president, chief director or managing directors.

## (2) Sectional meeting

To set up sectional meetings according to specialities in the executive bureau, to effectively administer this council.

- (a) Each member of this council shall belong to ~~either~~ one of the sectional meetings in accordance with his specialty.
- (b) Preferably, each sectional meeting should have its chairman. It is preferable that the office of chairman should be held by one of the directors of this council.
- (c) When the membership of a sectional meeting is too large, or if it is necessary by some other reason, sub-committees

may, as occasion calls, be set up in the sectional meeting.

(3) Special committee

If necessary for the administration of this council, a special committee may be established.

(4) Executive bureau

To establish an executive bureau consisting of the following departments for the execution of the business of this council.

(a) General affairs department

Matters concerning general affairs, accounting, conferences, committees, liaison, etc.

(b) Institutions department

Matters concerning contact with, and guidance of, institutions, education and well-being of the workers, etc.

(c) Minsei-iin department

Matters concerning contact with, and guidance of, Minsei-iin and Jido-iin, and promotion of the general ~~social~~ welfare service activities.

(d) Children's department.

Matters concerning children's general welfare, counter-measures for mothers and children, various child welfare meeting, etc.

(e) Education department

Matters concerning propagation, enlightenment, research, publication, etc.

- Note: 1 In organization of the executive bureau; its scale must be determined by the actual condition of the To, Do, Fu and prefecture.
- 2 Men of ability should be chosen as staff of the executive bureau preferably from among persons qualified as social welfare secretaries or those having experience in social welfare work.
- 3 In view of the purport of this council, the office of the executive bureau should be placed outside of government offices.

f. Expenditure

The expenses shall be defrayed mainly with the following incomes:



- (1) Membership fees.
- (2) Incomes from activities entrusted by the local government, the local community chest committee, etc.
- (3) Subscriptions and other incomes

g. Relation between this council and the local community chest committee

The liaison committee (provisional name) shall be formed between the community chest committee and this council so as to be consulted upon ~~about~~ the disposition of problems in which both are concerned.

In organizing departments and sections of the executive bureau concerned in the community chest movement, the two must cooperate with each other in attaining agreement concerning their personnel and expenditure to distinguish matters under each jurisdiction for the efficient management of the work.

4. Plan of Gun (and Large City) Social Welfare Councils

Planned by Social Welfare Council  
Preparatory Business Bureau

a. Title and Organization

This council shall be called the — Gun (or City) Social Welfare Council, and it shall, if necessary, be organized as a juridical person.

b. Object

This council aims at improving the general welfare within the district under its jurisdiction by means of close contact and cooperation among town and village (school ward and ward) social welfare councils.

c. Activity

- (1) Liaison and coordination concerning social welfare work.
- (2) Investigations concerning social welfare work.
- (3) Enlightenment and propagation concerning social welfare work.
- (4) Liaison among social welfare workers, including Minsei-iin and Jido-iin.
- (5) Cooperation in community chest movement.
- (6) Others

d. Membership

This council shall be formed of the following members.

- (1) Town and village (school ward and ward) social welfare councils.
- (2) Public and private social welfare work institutions and organizations.
- (3) Social welfare workers, including Minsei-iin and Jido-iin, or their representatives.
- (4) Representatives for the departments and sections concerned in social welfare of government and public offices.
- (5) Organizations concerned in social welfare.
- (6) Learned and experienced persons.

e. Organization

- (1) The board of this council shall be composed of President, Vice-President, directors and auditors. The officers shall be elected from among the members in the general meeting of members.
- (2) Clerks shall preferably be <sup>placed</sup> in this council.

f. Expenditure

The expenses shall be defrayed with membership fees, allotment of the community chest, and other incomes.

- Remarks:
- (1) To make good use of the existing Gun (or Large City) Standing Minsei-iin Council.
  - (2) The district under the jurisdiction of the Gun council shall be the same with the welfare district to be established in future. The said plan of the Gun council leaves much to be re-considered.

5. Plan of City, Ward, Town and Village Social Welfare Councils

Planned by Social Welfare Council  
Preparatory Business Bureau

a. Title

This council shall be called the — City, Ward, Town or Village Social Welfare Council.

b. Object

This council aims at improving the public welfare within the district under its jurisdiction by means of mutual cooperation of the parties concerned in social welfare work and the inhabitants concerned in social welfare.

## c. Activity

- (1) To make investigations and collect information on various problems concerning social welfare within the district, ~~and consult~~ <sup>and be consulted</sup> about what should be done and make practicable plans according to the information.
- (2) To urge the organizations concerned to carry out the plans, or put them into practice for itself.

For example, improvement of child welfare, advancement of public health and sanitation, betterment of living, bringing up recreational and other cultural institutions, establishment of day nurseries and other social welfare agencies, etc.

- (3) To be engaged in various activities to promote the inhabitants' understanding of, ~~an~~ <sup>and</sup> interest in, social welfare work.
- (4) To cooperate in the community chest movement.

## d. Membership

This council shall be formed of the following members.

- (1) Minsei-iin and Jido-iin.
- (2) Representative for the city, ward, town or village.
- (3) Representatives for the organizations concerned in social welfare.
- (4) Individuals concerned in social welfare work.
- (5) Representatives for public and private social welfare work institutions and organizations.

## e. Organization

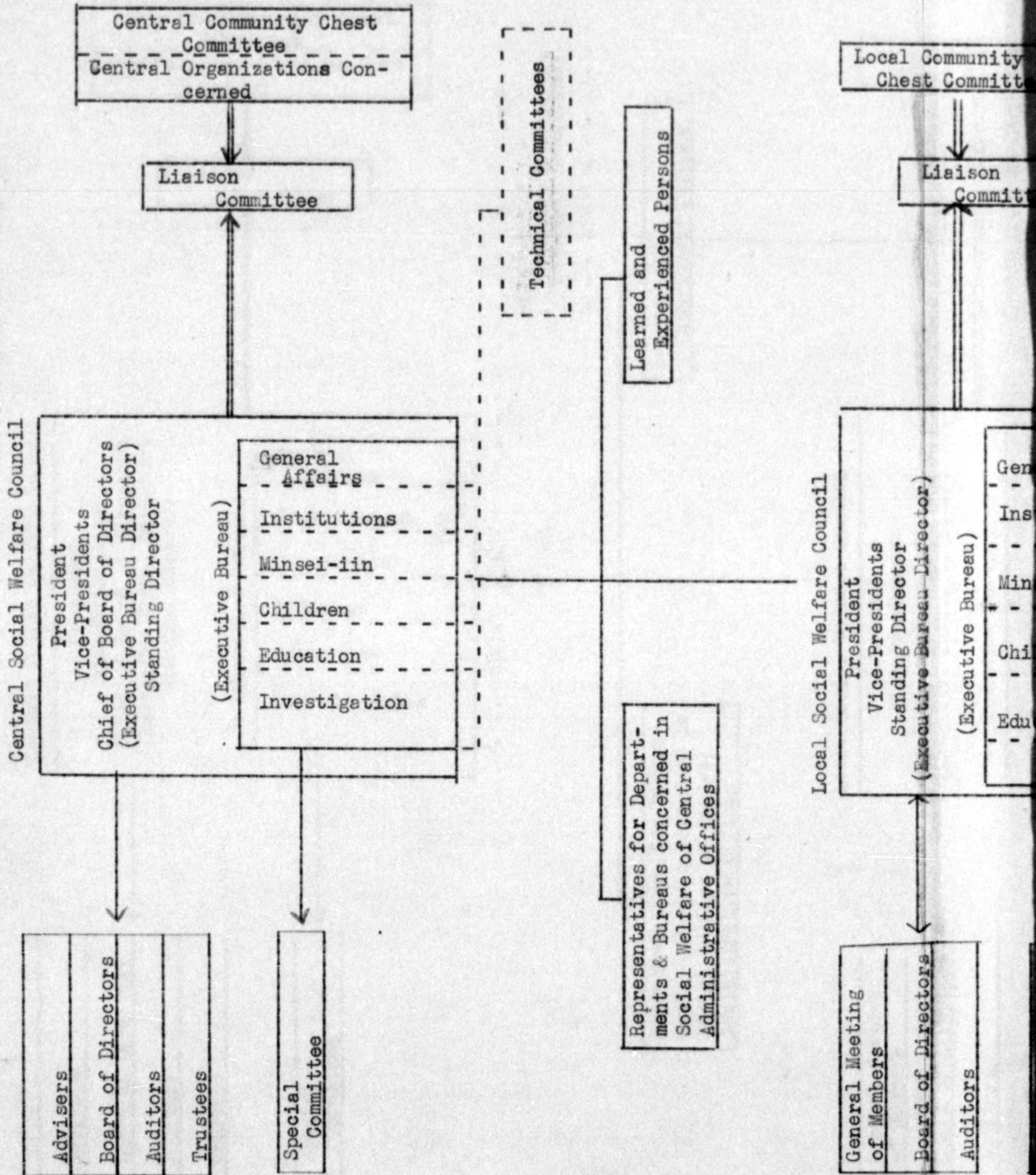
- (1) The board of this council shall be composed of President, Vice-President, directors and auditors. The officers shall be elected from among the members in the general meeting of members.
- (2) It is advisable that this council should have clerks.

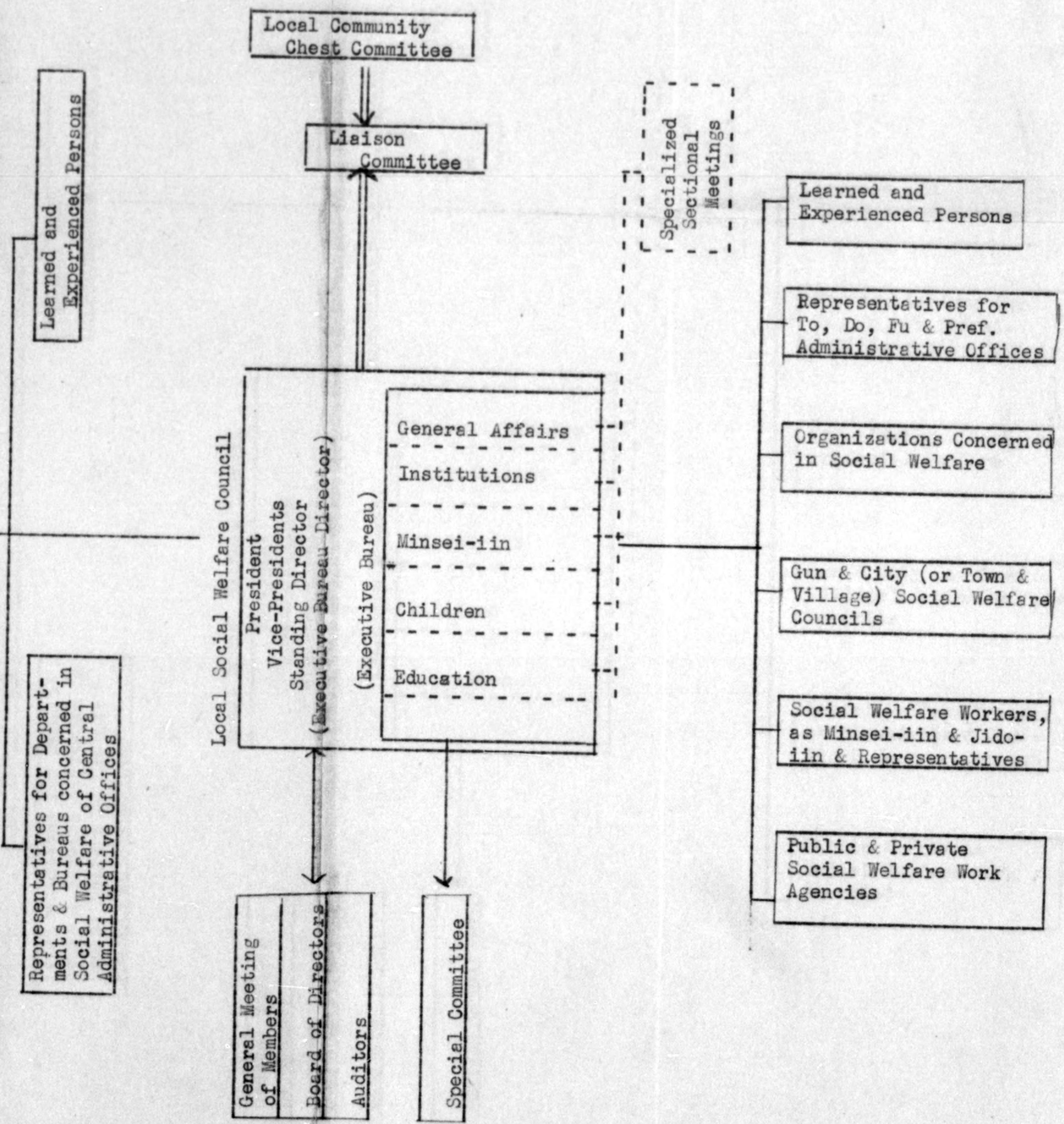
Remark: To make good use of the existing Minsei-iin council.

## f. Expenditure

The expenses shall be defrayed with membership fees, allotment of the community chest, and other incomes.

6. Organizational Chart of Central, and To, Do, Fu and Prefectural, Social Welfare Councils  
 Planned by Social Welfare Council  
 Preparatory Business Bureau





## 7. Articles of To, Do, Fu or Prefectural Social Welfare Council

(Draft)

Planned by Social Welfare Council Preparatory Business Bureau  
 (Use of the draft: This draft was made for your information on the assumption that the council will be a corporate juridical person (Shadan-Hojin). Though, considering that it is a membership system, the council is very likely to be "Shadan-Hojin", it is far from being our intention that it should be so. So it will be all right for you to choose "Zaidan-Hojin", juridical person with fund, for your procedural and practical convenience ~~in accordance with~~ <sup>to meet</sup> the circumstances of the district. In that case, too, this draft will, we hope, be a valuable material for the preparation of the constitution.)

Chapter 1. Title and Office

(Title)

Article 1. This association shall be called So-and-so To, Do, Fu or Prefectural Social Welfare Council.

(Office)

Article 2. The association shall have its office at such-and-such a place.

Chapter 2. Purpose and Activities.

(Purpose)

Article 3. The purpose of the association is to promote the efficient management and systematic activities of social welfare works in So-and-so To, Do, Fu or prefecture and thereby improve the social welfare of the district.

(Activities)

Article 4. The association shall conduct the following businesses for fulfilling the purpose prescribed in the preceding article.

1. Liaison and comprehensive planning concerning social welfare work.
2. Investigation, study and guidance concerning social welfare work.
3. Liaison with, and bringing up of, social welfare ~~work~~ institutions.
4. Liaison with, and bringing up of, social welfare workers, as Minsei-iin, Jido-iin, etc.
5. Liaison and coordination among Gun, City Town and Village social welfare councils.
6. Bringing up and education of social welfare workers.
7. Enlightenment and propagation concerning social welfare work.
8. Liaison with the community chest committee.
9. Promotion of the well-being of social welfare workers.
10. Other businesses necessary for the fulfilment of the purpose.

Chapter 3. Assets and Accounts

(Classification of Assets)

Article 5. The assets of this association shall be classified into the following items.

1. Assets entered in the inventory of the separate sheet which were donated upon foundation of the association.
2. Membership fees and other contributions.
3. Donated money and articles.
4. Fruits ~~produced~~ from its assets.
5. Incomes in connection with its activities.
6. Other incomes.

(Expenditure)

Article 6. The expenses of the association shall be defrayed with its assets.

(Administration of Assets)

Article 7. The assets of the association shall be administered by the president, and the method of administration shall be determined by the decision of the board of trustees.

(Custody of cash)

Article 8. Of the assets of the association, cash shall be deposited in the post-office or a bank, held in trust with a trust company, or kept in custody in the form of Government bond or sound securities.

However, the association may purchase, and dispose of, real estate through the decision of the board of trustees.

(Surplus Fund)

Article 9. In case there is a surplus fund at the end of the fiscal-year, all or a part of it shall be carried forward to next fiscal-year, or placed to reserve and carried forward, through the decision of the board of trustees.

(Budget and Settlement of Accounts)

Article 10. The budget of the association for each fiscal-year shall be submitted to ~~for its approval~~ the general meeting of members for its approval through the decision of the board of trustees before the commencement of the fiscal year, and the settlement of accounts shall, with the inventory, be inspected by the auditors and submitted to the general meeting of members for its recognition through the approval of the board of trustees after the end of the fiscal-year.

(Special Account)

Article 11. The association may establish a special account through the decision of the board of trustees.

(Fiscal year)

Article 12. The fiscal-year of the association begins on April 1 ~~each year~~ and ends on March 31 of the following year.

Chapter 4. Membership

(Qualification)

Article 13. Those who approve of the purport of the association and join it shall be called members of the association. Only those who come under one of the following categories shall be qualified for membership.

1. Public and private social welfare work institutions and organizations.
2. Social Welfare workers, such as Minsei-iin, Jido-iin, etc., or their representatives.
3. Gun and City social welfare councils (or town and village social welfare councils).
4. Government and public officials concerned in social welfare.
5. Organizations concerned in social welfare.
6. Learned and experienced persons.

(Membership Fee)

Article 14. Members shall pay their membership fee as provided separately.

(Admission to Membership)

Article 15. To join the association, approval by the board of directors shall be necessary, beside application with forms entered in as provided separately.

(Representatives)

Article 16. In case a member is a juridical person or the like, ~~he~~ <sup>it</sup> must designate a representative to exercise ~~his~~ right of membership and report it to the association. Alteration of the representative must be reported as well.

Article 17. The status of an officer cannot be succeeded as ~~the~~ <sup>the</sup> result of ~~a~~ change of the representative exercising the right of membership of a juridical person or the like.

(Withdrawal from Membership)

Article 18. Members are supposed to have left the association in the following cases.

1. In case the person in question reported to the effect.
2. Death of the member of resolution of the association.
3. Dismissal from membership.

(Dismissal from Membership)

Article 19. In case a member's action stains the honour of the association or is contrary to the purport of the association, the association may dismiss him from membership through the decision of the board of directors.

Chapter 5. Board of Officers



## (Classification and Fixed Number of Board)

Article 20. The board of the association shall consist of the following members:

President	1
Vice-Presidents	some
Standing Director	1
Directors	some
Auditors	"
Trustees	"

## (Appointment of Board)

Article 21. The president and vice-presidents shall be chosen and appointed in the general meeting of members.

2. Directors and auditors shall be chosen and appointed from among the members through the decision of the board of trustees. However, they cannot hold the office of others either way.

3. In case the president deems it necessary, he may select and appoint not more than a third of the fixed number of directors from among the members who do not come under the preceding items, through the decision of the board of trustees.

4. The <sup>classification,</sup> ~~ratio~~ by qualification for membership, <sup>of</sup> ~~among~~ directors chosen and appointed from among the members shall be as follows:

- a. Those who are chosen and appointed from among member qualified in accordance with Article 13, paragraph 2, Item 1.--- a fourth.
- b. Those who are chosen and appointed from among members qualified in accordance with Article 13, paragraph 2, Item 2.--- a fourth.
- c. Those who are chosen and appointed from among members qualified in accordance with Article 13, paragraph 2, Item 3.--- a fourth.
- d. Those who are chosen and appointed from among members qualified in accordance with Article 13, paragraph 2, Items 4 - 6.

5. Managing directors shall be elected from among the directors and commissioned by the president.

6. Trustees shall be chosen and appointed from among the members in a general meeting of members.

7. <sup>election</sup> The <sup>ratio</sup> ~~in the election~~ of directors shall correspondingly apply to ~~the ratio by qualification for membership~~ <sup>that</sup> of trustees.

## (Official Duties of Board)

Article 22. The president shall represent the association and supervise the affairs of the association.

2. Vice-presidents shall assist the president and act for him in case he is under circumstances ~~unable~~ <sup>unable</sup> to carry out his duties.

3. The standing director shall conduct the routine work.
4. Directors shall organize the board of directors, and administer the affairs of the association.
5. Auditors shall conduct the following duties.
  - a. They shall audit accounts of the association.
  - b. They shall inspect how the affairs of the association are administered by the directors.
  - c. In case they discover a dishonest act in connection with accounts, or administration of the affairs, of the association, they must report it to the general meeting of members or to the competent authorities.
  - d. They shall call for the general meeting of members, in case it is necessary for making a report in accordance with the preceding item.
  - e. Trustees shall organize the board of trustees, and deliberate on matters within their powers and other important matters.

## (Term of Office and Replacement)

Article 23. The term of office of the board shall be — years. However, it shall not disturb re-appointment.

2. The term of office of an officer installed to fill a vacancy, shall be the rest of the term of his predecessor.

3. The board shall, after completion of the term of office, conduct its duties <sup>in the same way as before</sup> ~~as well~~ till its successors are installed.

## (Advisers)

Article 24. The association may have advisers <sup>in the board.</sup>

2. Advisers shall be commissioned by the president through the recommendation of the board of directors.

3. Advisers shall be consulted by the president upon important matters.

Chapter 6. Conference

## (Categories)

Article 25. Conferences shall be held either by the general meeting of members, the board of trustees, or the board of directors.

## (Call)

Article 26. Conferences shall be called, and presided over, by the president.

2. In case a conference is requested with a petition indicating the subject for discussion and signed by more than a fifth of the members, trustees, or the directors, the president must call the conference.

(Opening)  
 Article 27. The general meeting of members shall be opened once a year. However, extraordinary general meetings may be opened as occasion demands.

2. The meeting of the board of trustees and that of the board of directors shall be opened at any time on demand.

(Quorum)  
 Article 28. Unless more than a half of the constituent elements are present, a conference could not be held. However, this regulation shall not disturb the reopening of a conference.

(Method of Decision)  
 Article 29. The decision of a conference shall be made by the majority; it shall be made by the president, in case ayes and noes are equal in number.

(Letters and Decision)  
~~who is by~~ <sup>whom</sup> Article 30. A member, or member of the board, of the association may, only on matters given notice of in advance, vote, or nominate his proxy in voting, by letter. In this case, he is regarded as having attended the meeting.

(Power of Board of Directors)  
 Article 31. The following matters, beside those prescribed by the preceding articles of association, shall be referred to the board of directors.

1. Planning of works.
2. Matters to be referred to the general meeting of members and the board of trustees.
3. Matters commissioned to the board by the decision of the general meeting of members and the board of trustees.
4. Enactment, revision and abolition of regulations.
5. Other matters referred to the board by the president.

(Power of Board of Trustees)  
 Article 32. The following matters, beside those prescribed by the preceding articles of association, shall be referred to the board of trustees.

1. Approval of plans concerning works.
2. Matters to be referred to the general meeting of members.
3. Approval of the enactment, revision and abolition of important regulations.
4. Decision on membership fee and other matters imposing a burden on the members.
5. Matters commissioned to the board by the decision of the general meeting of members.
6. Other matters referred to the board by the president.

(Power of General Meeting of Members)

## (Classification and Fixed Number of Board)

Article 20. The board of the association shall consist of the following members:

President	1
Vice-Presidents	some
Standing Director	1
Directors	some
Auditors	"
Trustees	"

## (Appointment of Board)

Article 21. The president and vice-presidents shall be chosen and appointed in the general meeting of members.

2. Directors and auditors shall be chosen and appointed from among the members through the decision of the board of trustees. However, they cannot hold the office of others either way.

3. In case the president deems it necessary, he may select and appoint not more than a third of the fixed number of directors from among the members who do not come under the preceding items, through the decision of the board of trustees.

4. The <sup>classification,</sup> ~~ratio~~ by qualification for membership, <sup>of</sup> ~~among~~ directors chosen and appointed from among the members shall be as follows:

- a. Those who are chosen and appointed from among member qualified in accordance with Article 13, paragraph 2, Item 1.--- a fourth.
- b. Those who are chosen and appointed from among members qualified in accordance with Article 13, paragraph 2, Item 2.--- a fourth.
- c. Those who are chosen and appointed from among members qualified in accordance with Article 13, paragraph 2, Item 3.--- a fourth.
- d. Those who are chosen and appointed from among members qualified in accordance with Article 13, paragraph 2, Items 4 - 6.

5. Managing directors shall be elected from among the directors and commissioned by the president.

6. Trustees shall be chosen and appointed from among the members in a general meeting of members.

7. The <sup>election</sup> ~~ratio in the election~~ of directors shall correspondingly apply to ~~the ratio by qualification for membership~~ <sup>that</sup> of trustees.

## (Official Duties of Board)

Article 22. The president shall represent the association and supervise the affairs of the association.

2. Vice-presidents shall assist the president and act for him in case he is under circumstances ~~unable~~ <sup>unable</sup> to carry out his duties.

3. The standing director shall conduct the routine work.

4. Directors shall organize the board of directors, and administer the affairs of the association.

5. Auditors shall conduct the following duties.

a. They shall audit accounts of the association.

b. They shall inspect how the affairs of the association are administered by the directors.

c. In case they discover a dishonest act in connection with accounts, or administration of the affairs, of the association, they must report it to the general meeting of members or to the competent authorities.

d. They shall call for the general meeting of members, in case it is necessary for making a report in accordance with the preceding item.

e. Trustees shall organize the board of trustees, and deliberate on matters within their powers and other important matters.

(Term of Office and Replacement)

Article 23. The term of office of the board shall be — years. However, it shall not disturb re-appointment.

2. The term of office of an officer installed to fill a vacancy, shall be the rest of the term of his predecessor.

3. The board shall, after completion of the term of office, conduct its duties ~~as well~~ <sup>in the same way as before</sup> till its successors are installed.

(Advisers)

Article 24. The association may have advisers <sup>in the board.</sup>

2. Advisers shall be commissioned by the president through the recommendation of the board of directors.

3. Advisers shall be consulted by the president upon important matters.

#### Chapter 6. Conference

(Categories)

Article 25. Conferences shall be held either by the general meeting of members, the board of trustees, or the board of directors.

(Call)

Article 26. Conferences shall be called, and presided over, by the president.

2. In case a conference is requested with a petition indicating the subject for discussion and signed by more than a fifth of the members, trustees, or the directors, the president must call the conference.

## (Opening)

Article 27. The general meeting of members shall be opened once a year. However, extraordinary general meetings may be opened as occasion demands.

2. The meeting of the board of trustees and that of the board of directors shall be opened at any time on demand.

## (Quorum)

Article 28. Unless more than a half of the constituent elements are present, a conference could not be held. However, this regulation shall not disturb the reopening of a conference.

## (Method of Decision)

Article 29. The decision of a conference shall be made by the majority; it shall be made by the president, in case ayes and noes are equal in number.

## (Letters and Decision)

Article 30. A member, or member of the board, of the association <sup>whom</sup> ~~who is~~ by unavoidable circumstances prevented from attending the meeting may, only on matters given notice of in advance, vote, or nominate his proxy in voting, by letter. In this case, he is regarded as having attended the meeting.

## (Power of Board of Directors)

Article 31. The following matters, beside those prescribed by the preceding articles of association, shall be referred to the board of directors.

1. Planning of works.
2. Matters to be referred to the general meeting of members and the board of trustees.
3. Matters commissioned to the board by the decision of the general meeting of members and the board of trustees.
4. Enactment, revision and abolition of regulations.
5. Other matters referred to the board by the president.

## (Power of Board of Trustees)

Article 32. The following matters, beside those prescribed by the preceding articles of association, shall be referred to the board of trustees.

1. Approval of plans concerning works.
2. Matters to be referred to the general meeting of members.
3. Approval of the enactment, revision and abolition of important regulations.
4. Decision on membership fee and other matters imposing a burden on the members.
5. Matters commissioned to the board by the decision of the general meeting of members.
6. Other matters referred to the board by the president.

## (Power of General Meeting of Members)

Article 33. The following matters shall be referred to the general meeting of members.

1. Alteration of the articles of association.
2. Disposition of properties.
3. Dissolution of the juridical person.
4. Other matters of importance, except those commissioned to the board of directors and the board of trustees.

Chapter 7. Sectional Meetings and Committees.

(Sectional Meetings and Committees)

Article 34. The association may, to control its activities, establish sectional meetings and, if necessary, committees. Detailed regulations for the sectional meetings and committees shall be provided for separately.

Chapter 8. Executive Bureau

(Executive Bureau)

Article 35. The executive bureau shall be established to administer the affairs of the association. Rules concerning the executive bureau shall be determined by the president through the decision of the board of directors.

Chapter 9. Alteration of Articles and Dissolution of Association

(Alteration of Articles)

Article 36. An alteration of the articles of association must receive the consent of more than three-fourths of the members and the sanction of the competent authorities.

(Dissolution)

Article 37. The dissolution of the association must receive the consent of more than three-fourths of the members and the sanction of the competent authorities.

(Disposition of Residue)

Article 38. In case of the dissolution of the association the residue shall be donated to organizations similar to the association in character through the decision of the general meeting of members with the sanction of the competent authorities.

Chapter 10. Supplementary Rules.

(Detailed Regulations for Enforcement of Articles)

Article 39. Detailed regulations necessary for the enforcement of the articles of association shall be determined by the president through the decision of the board of directors.

(Temporary Board of Officers)

Article 40. The following persons shall act as directors till directors are installed in the board in accordance with the provision of Article 21, paragraph 2.

Director So-and-so,  
Director So-and-so,

8. Concerning Social Welfare Council Preparatory Business Bureau.

a. The above named bureau was established to take charge of various preparatory businesses concerning the organization of the central social welfare council during the period till a regular preparatory committee is formed.

b. The address of the bureau is:

Chūō-Shakai-Kan  
c/o (Central Social Work Office),  
266, 3-chome, Harajuku, Shibuya-Ku, Tokyo.

c. The supreme committee system is now adopted by the bureau; the committee consists of the following members and it is to decide on the general principles of preparation.

Mr. Nakagawa, president of Japan Social Work Association; Mr. Aoki, Chief, Board of Directors, Japan Social Work Association; Mr. Tokugawa, President of National Relief Association; Mr. Sakurai, Chief, Board of Directors, National Relief Association; Mr. Nakagawa, Chief, Board of Directors, All-Japan Minsei-iin Federation; Mr. Ogawa, Assistant Chief, Board of Directors, All-Japan Minsei-iin Federation; Mr. Sano, Assistant Chief, Board of Directors, All-Japan Minsei-iin Federation.

d. The bureau is now controlled by mutual consent of the following persons.

Mr. Sano, Chief, Executive Bureau of All-Japan Minsei-iin Federation, Mr. Nakagawa, Chief, Executive Department, National Relief Association; Mr. Maki, Standing Director of Japan Social Work Association; Mr. Kuroki, Chief, General Affairs Section, Social Affairs Bureau, Welfare Ministry.

e. Two members of the staff have been dispatched from each of the three organizations concerned to the bureau to take charge of the preparatory business for the present.

f. Members of the staff of the Executive Bureau, Central Community Chest Committee are going to join the bureau to participate in discussion and liaison there.



Kanto

DRAFT ORGANIZATION OF  
THE CENTRAL SOCIAL WELFARE COUNCILS

1. **TITLE AND ORGANIZATION:** The organization shall be known as the Central Social Welfare Councils, incorporated as a juridical person.
2. **OBJECTS:** The objects of the Councils shall be to promote efficient execution of social welfare work, organized actions and advancement of social work through close interrelationship among Prefectural Social Welfare Councils.
3. **ACTIVITIES:** The Councils shall undertake the following activities:
  - a. Public relations and coordination of Prefectural councils
  - b. Cooperation and general planning of social work
  - c. Research and guidance in social work
  - d. Coordination and encouragement of social agencies
  - e. Coordination and encouragement of volunteer social service workers like Minsei-Iins and child welfare workers
  - f. Training and in-service training of social workers
  - g. Development and dissemination of social work
  - h. Cooperation with Community Chest Committees
  - i. Liaison with government and national organizations
  - j. Public relations with foreign welfare work organs
  - k. Welfare activities for social workers
  - l. Other activities deemed pertinent with objects of the Councils
4. **MEMBERSHIP:** The membership constituents of the Councils will be as follows:
  - a. Prefectural Social Welfare Councils
  - b. Representatives of the central government welfare offices
  - c. Scholars and persons of experience
5. **ORGANIZATION:**
  - a. The Councils shall have the following officers:

- (1) President, Vice-President, Board Chairman, Executive Director, Directors, Auditors and Councillors.
- (2) The Councils may have Advisors
- (3) Councillors shall be comprised of the following:
  - (a) Representatives of Prefectural Councils
  - (b) Representatives of central government welfare offices, and scholars and persons of experience appointed by the President

The Councillors appointed by the President shall not exceed in number  $1/3$  of the total Councillors.

NOTE: No government officials in position of control shall be chosen for offices of the President, Vice-President, and Executive Director.

b. Expert Committees. Committees of experts may be formed to facilitate smooth execution of activities. These special committees shall deal with pertinent issues in their specialized fields, conducting researches and planning. Sub-committees may be formed by the Committees when they are deemed necessary.

c. Special Committees. Special Committee(s) may be formed when deemed necessary to promote proper execution of business of the Councils.

d. Joint Committees. Joint Committee(s) shall be formed as a liaison agency to deal with Community Chest organization and other central organizations connected with social work.

e. Office. The Central Council shall have its office with the following 6 divisions:

- (1) Administration - General affairs, treasury, meetings, membership, and liaison departments.
- (2) Agencies Division - Public relations and guidance of member agencies, training and welfare activities for social workers, etc.
- (3) Minsei-Iin Division - Public relations and guidance of Minsei-Iins (child welfare workers), and promotion of other voluntary service work.
- (4) Children Division - Child welfare and measures dealing with mothers with dependent children.
- (5) Promotion Division - Promotion, intelligence and publicity.

- (1) President, Vice-President, Board Chairman, Executive Director, Directors, Auditors and Councillors.
- (2) The Councils may have Advisors
- (3) Councillors shall be comprised of the following:
  - (a) Representatives of Prefectural Councils
  - (b) Representatives of central government welfare offices, and scholars and persons of experience appointed by the President

The Councillors appointed by the President shall not exceed in number  $1/3$  of the total Councillors.

NOTE: No government officials in position of control shall be chosen for offices of the President, Vice-President, and Executive Director.

b. Expert Committees. Committees of experts may be formed to facilitate smooth execution of activities. These special committees shall deal with pertinent issues in their specialized fields, conducting researches and planning. Sub-committees may be formed by the Committees when they are deemed necessary.

c. Special Committees. Special Committee(s) may be formed when deemed necessary to promote proper execution of business of the Councils.

d. Joint Committees. Joint Committee(s) shall be formed as a liaison agency to deal with Community Chest organization and other central organizations connected with social work.

e. Office. The Central Council shall have its office with the following 6 divisions:

- (1) Administration - General affairs, treasury, meetings, membership, and liaison departments.
- (2) Agencies Division - Public relations and guidance of member agencies, training and welfare activities for social workers, etc.
- (3) Minsei-Iin Division - Public relations and guidance of Minsei-Iins (child welfare workers), and promotion of other voluntary service work.
- (4) Children Division - Child welfare and measures dealing with mothers with dependent children.
- (5) Promotion Division - Promotion, intelligence and publicity.

(6) Research Division - Studies and research work.

NOTE: a. In dealing with the Central Community Chest Committee appropriate actions will be pursued by the Divisions concerned, including matters of financial outlays. b. In filling posts persons qualified for social work shall, and otherwise qualified with experience in their respective fields shall have preferential choice as much as practicable.

6. FINANCE: Sources of revenue of the Councils shall be as follows:
- a. Quotas payable by Prefectural Social Work Councils.
  - b. Service charges from the government and Community Chest allowances.
  - c. Contributions and others.