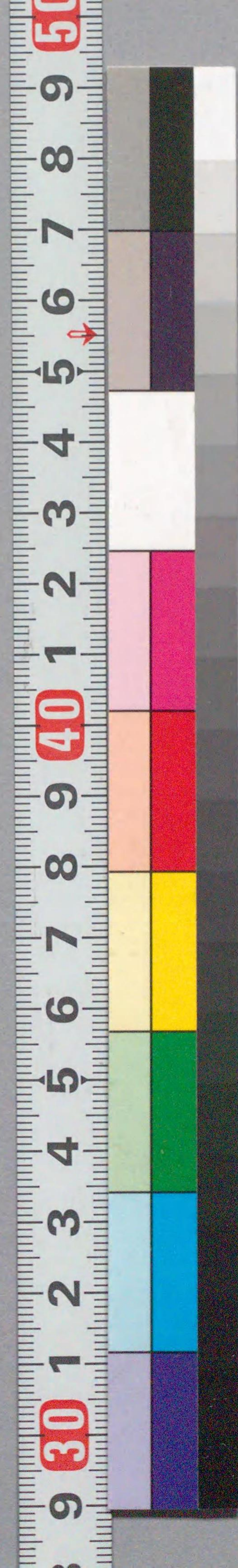


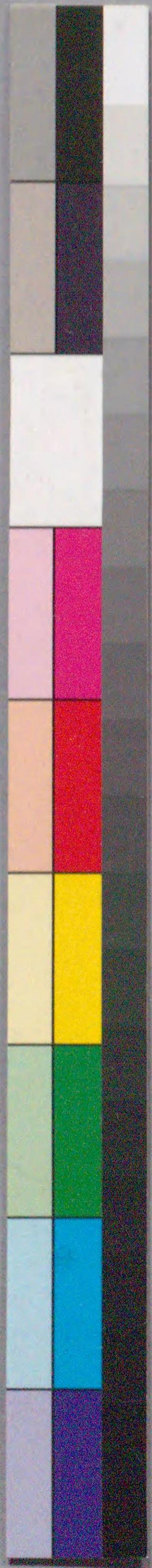
笑増厄災除講談

207  
248



ガラス使用





笑増厄災除

207  
248

笑増厄災除





寛政三・三〇

自序

厄拂の日ヤアラ且那の古厄をよまば

ふ年々愚の方をばたひすあゆむ乃ちあ方

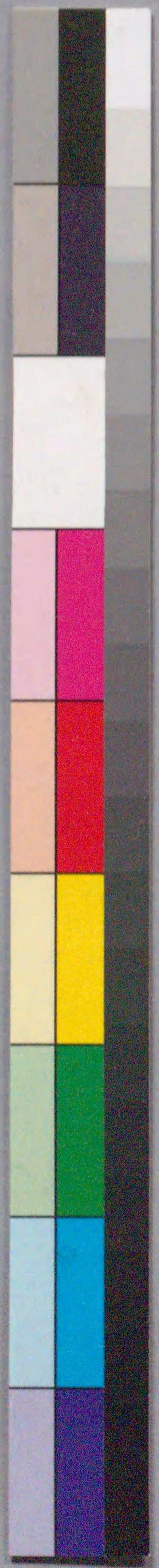
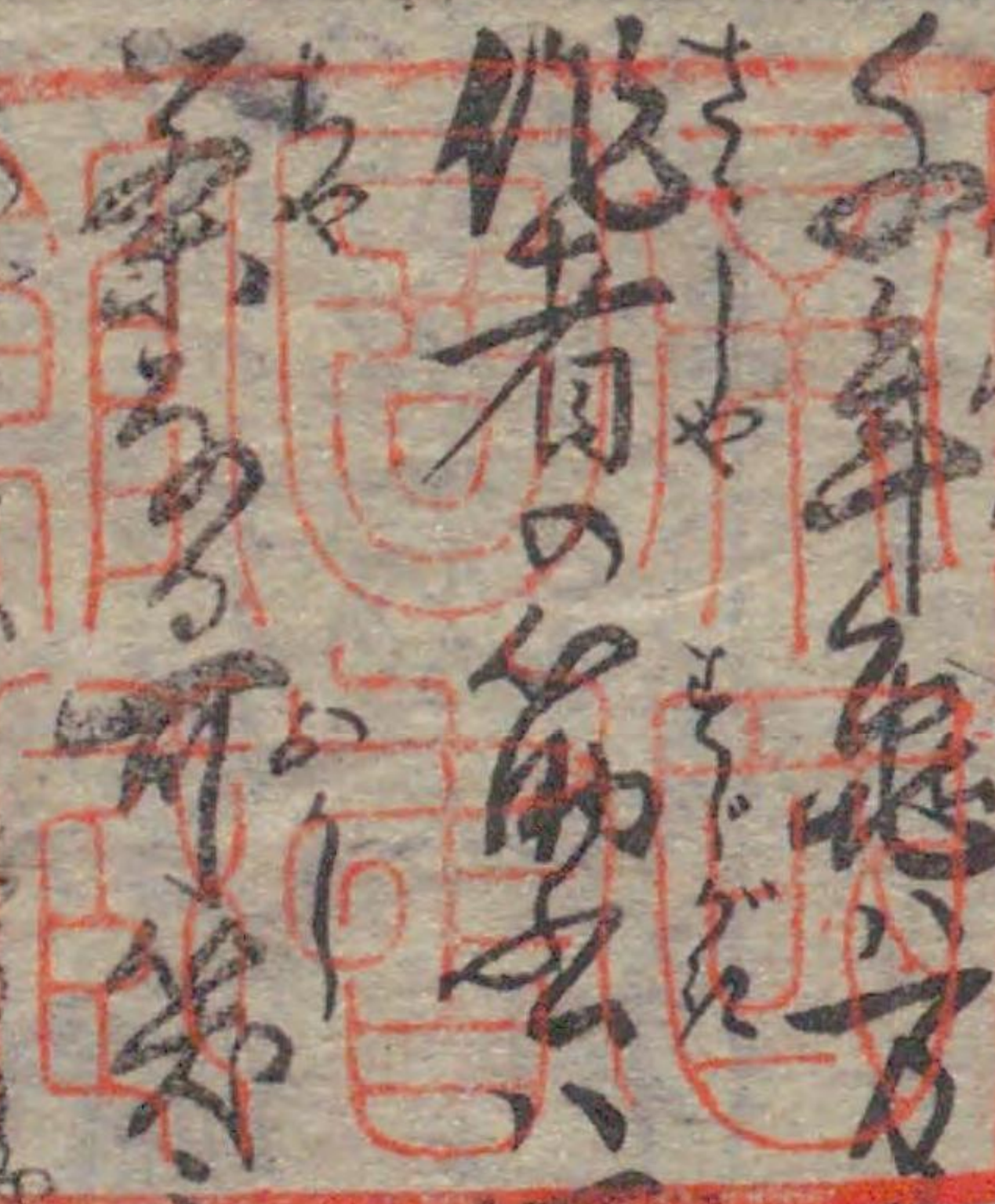
作者の前を酒落のうら酒太命を酒落の

茶の可第を皆様みづらよ清淨判

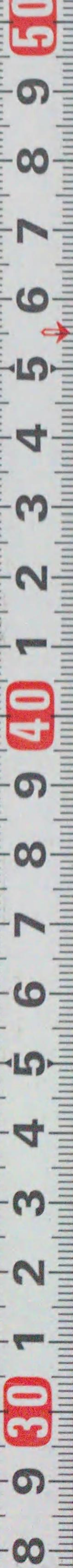
は厄払の御釋よ州紙のおまをどあきり

伊勢治の目せく〇ざらるゝ萬宝達

は客あひ











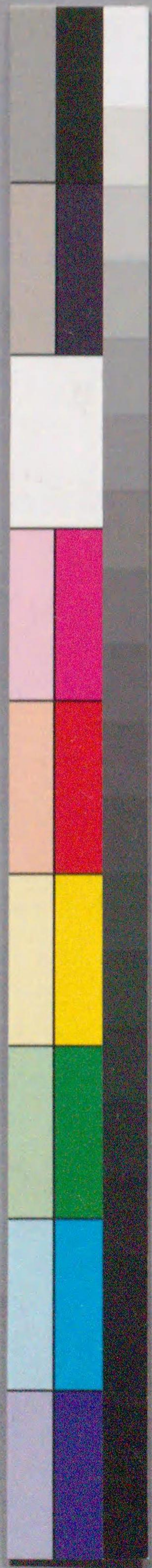




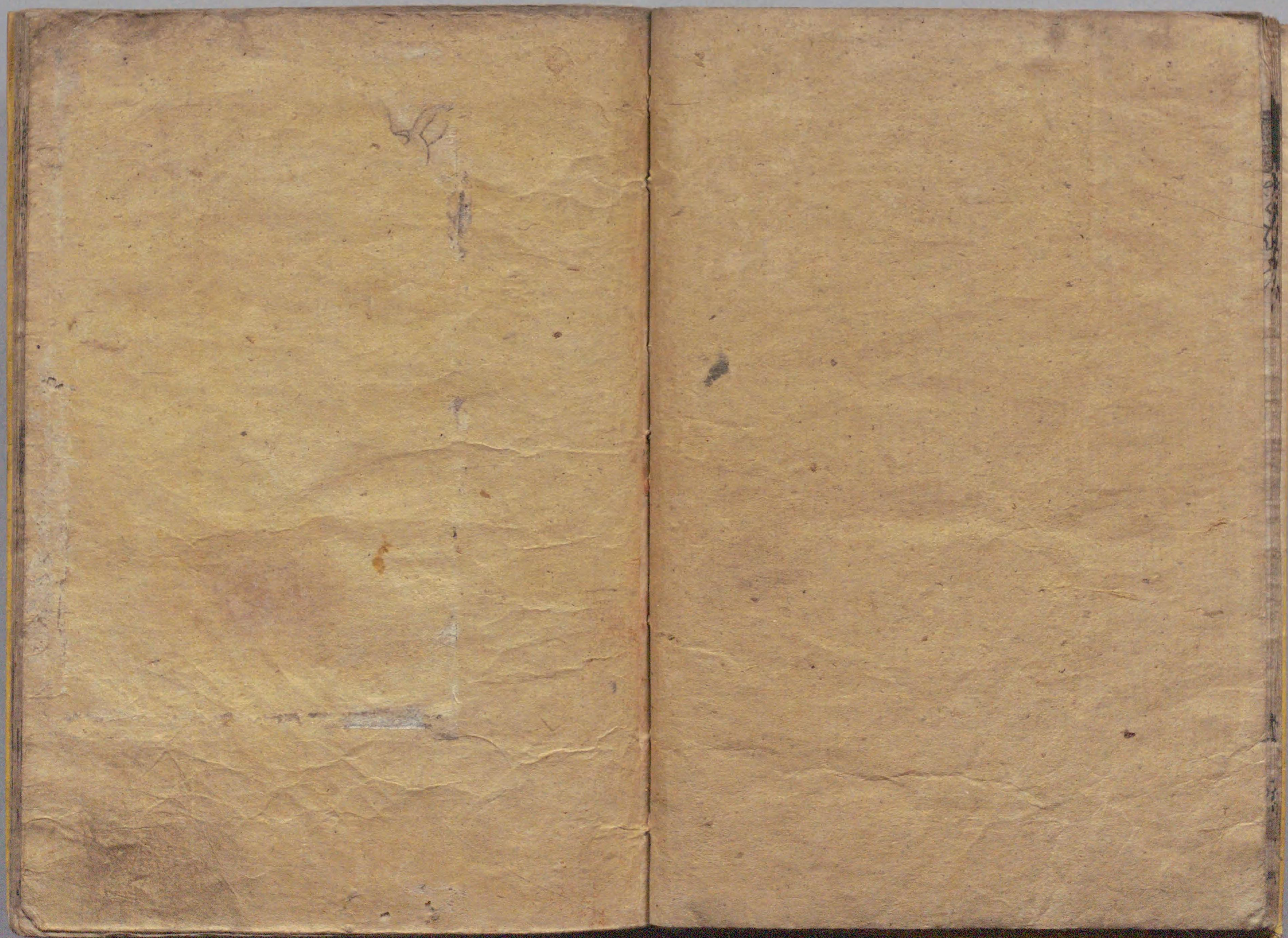
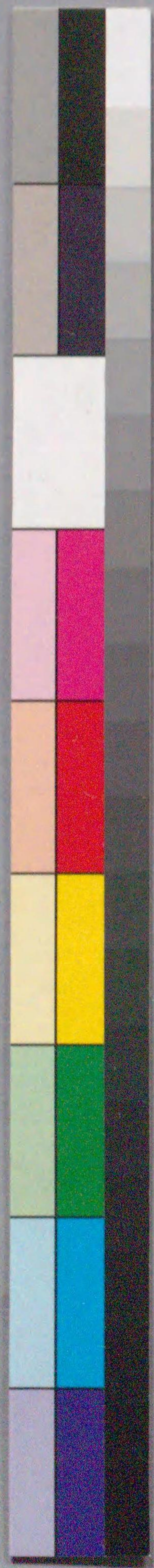












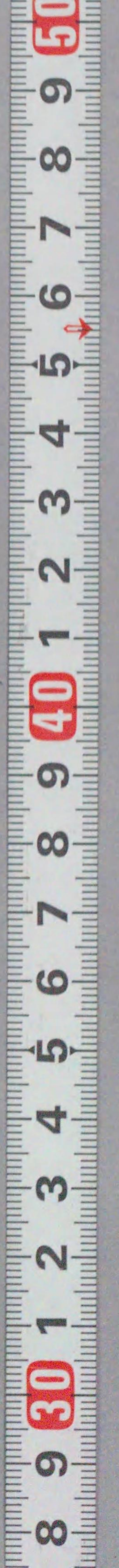


東海道

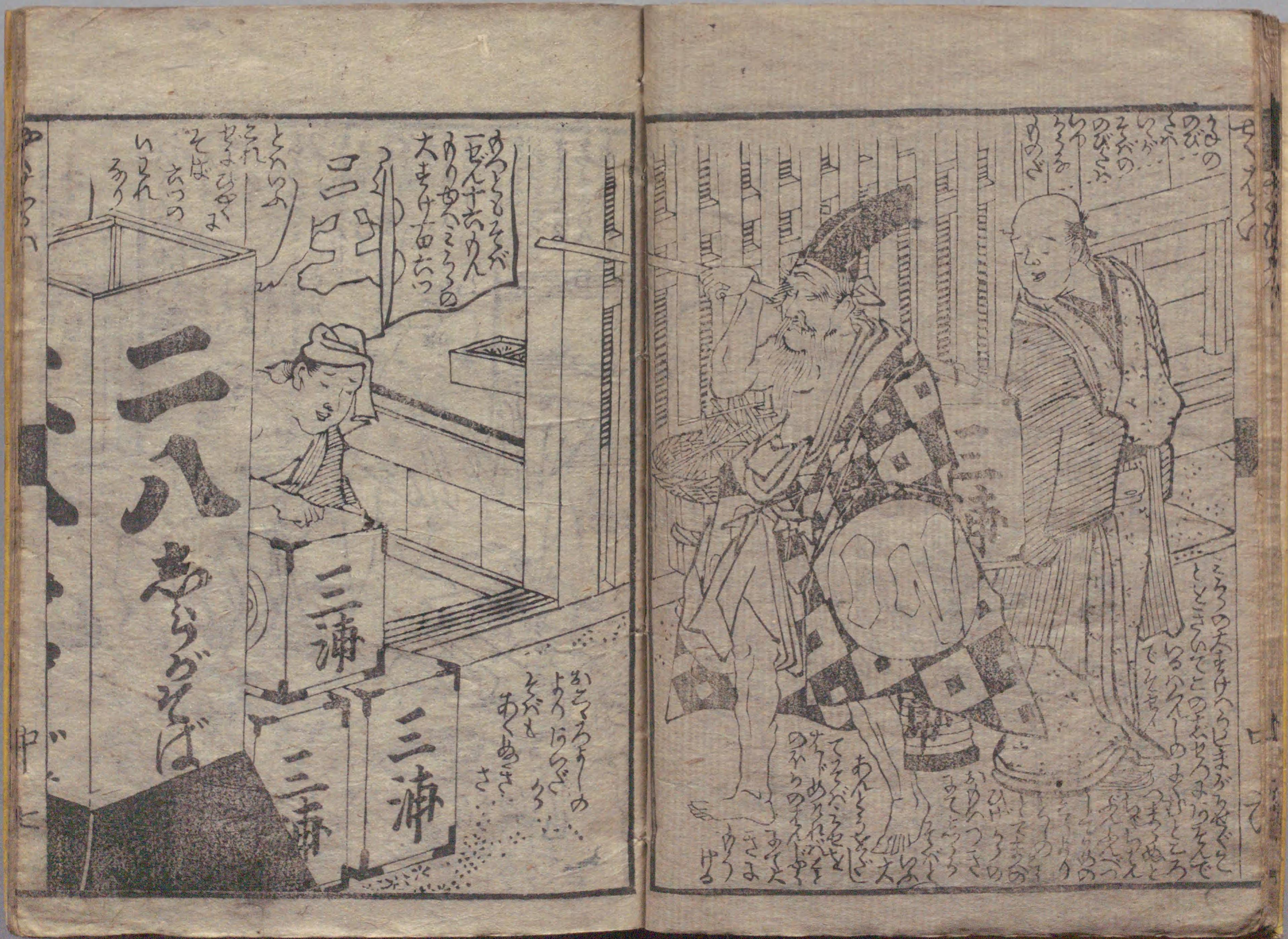


ろう徳ちんはひ  
 ぶらまいても  
 しんもあなれはあま  
 ぞひとちをばさるま  
 あれをもさしわて  
 かめいのももあな  
 ちあしあめとちり  
 なるかちせろが  
 さいあんてや  
 まさつりり  
 うめつを二の  
 まいりめしひあ  
 あれあいし  
 これとあやろ  
 ちやとまは  
 りりあまの  
 ちんま

うめつて利  
 くらも  
 けのちび  
 ちび



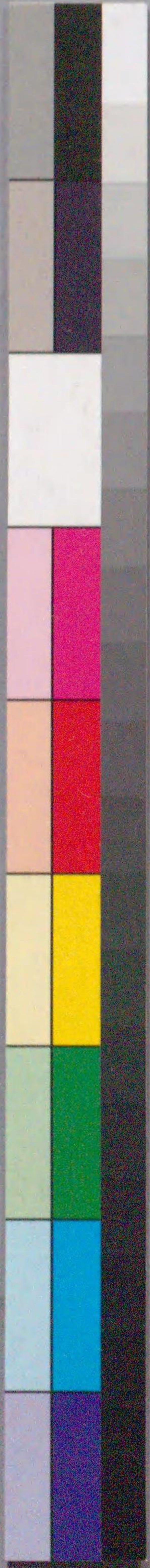








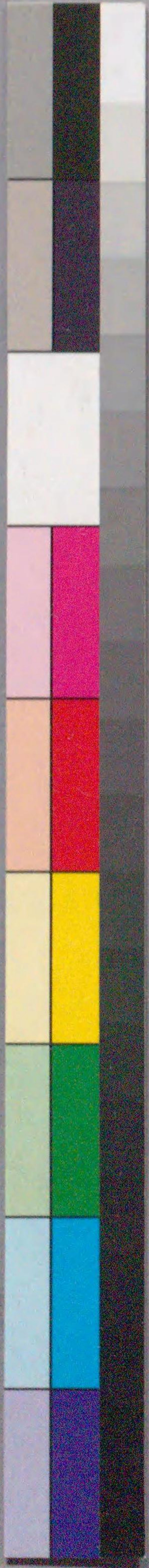




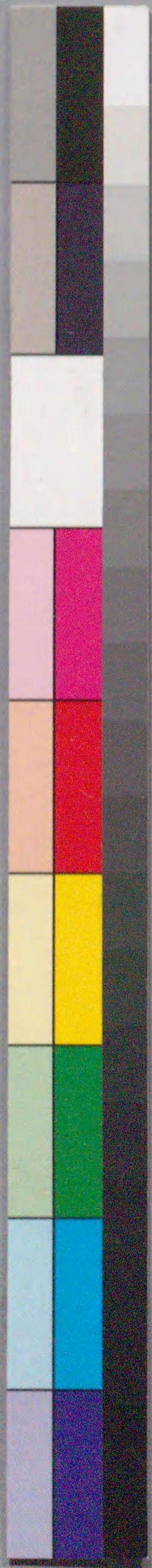








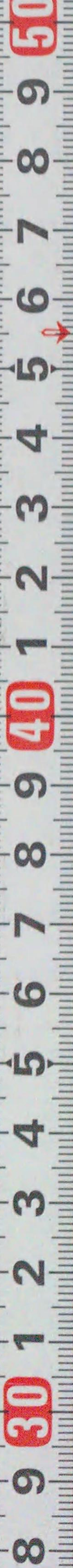




















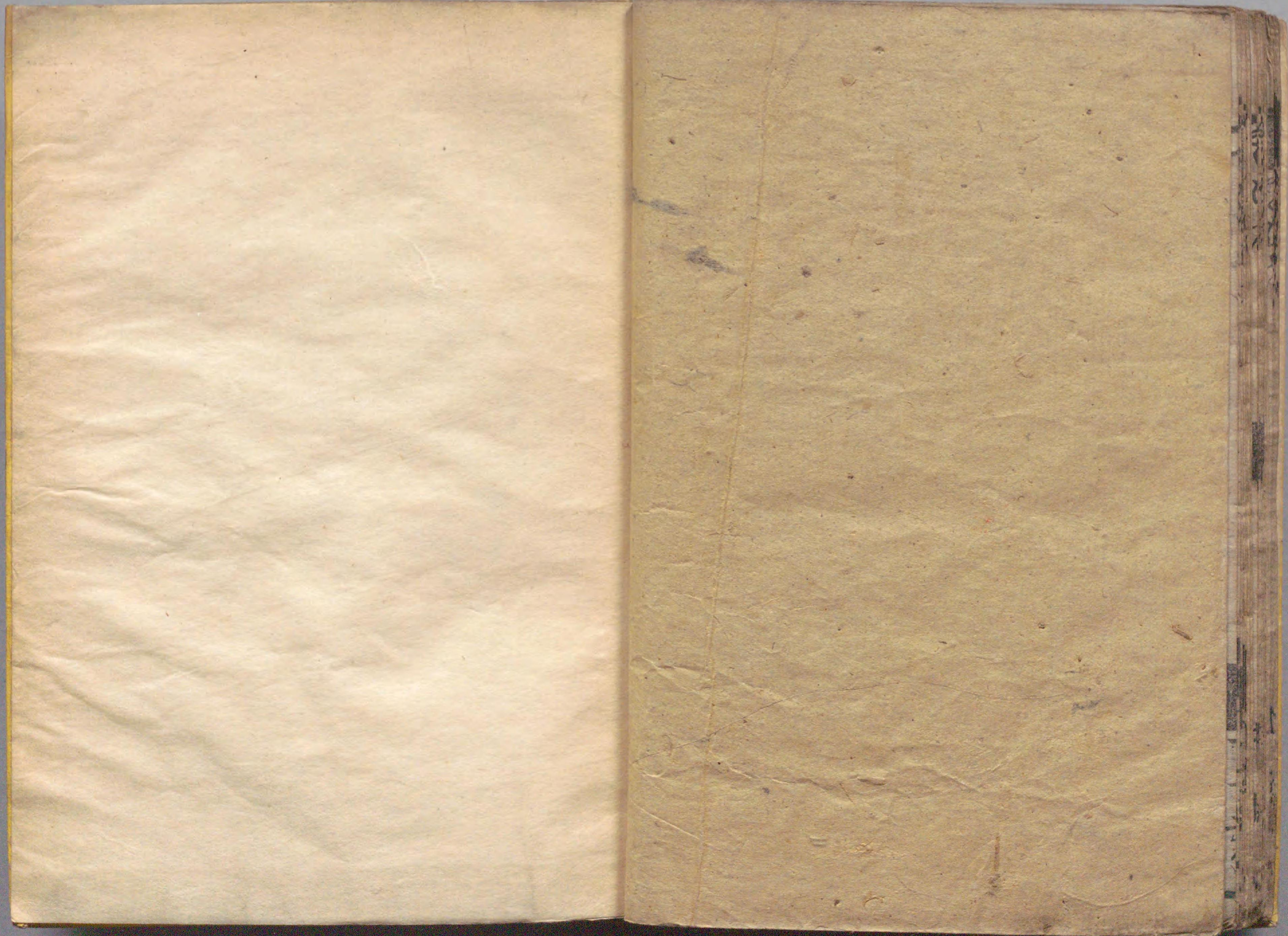
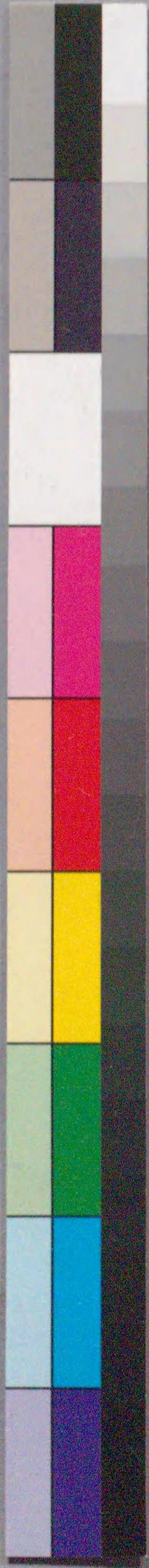




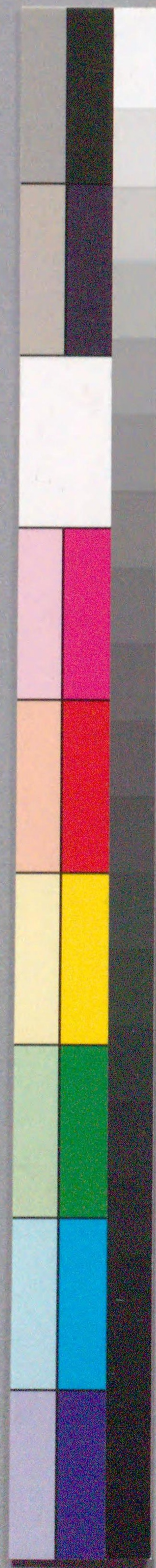












国立国会図書館 笑増厄災除講談：3巻 207-248



ガラス使用

