

207
288

唯心鬼打豆

缺本合冊



国立国会図書館 唯心鬼打豆 : 3巻 207-288

ガラス使用

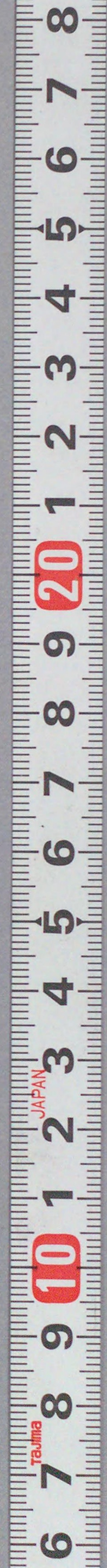


207
288

京傳作宛ら目
おふのくちう之豆
三冊集

国立国会図書館 唯心鬼打豆 : 3巻 207-288

ガラス使用





目録

Handwritten text in vertical columns, likely a table of contents or index, with several red square seals interspersed.

あめくさるひ
あめくさるひ

山東京傳題











Handwritten Japanese text in the upper left corner of the left page, written in a cursive style.

Handwritten Japanese text in the upper right corner of the right page, written in a cursive style.



Small handwritten Japanese text located near the bottom of the right page illustration.













Handwritten text at the top of the left page, including the characters 唯心鬼打豆 (Uishin Oni Uchi Mame).



Handwritten text at the bottom of the left page.

Handwritten text at the top of the right page.



Handwritten text at the bottom of the right page.







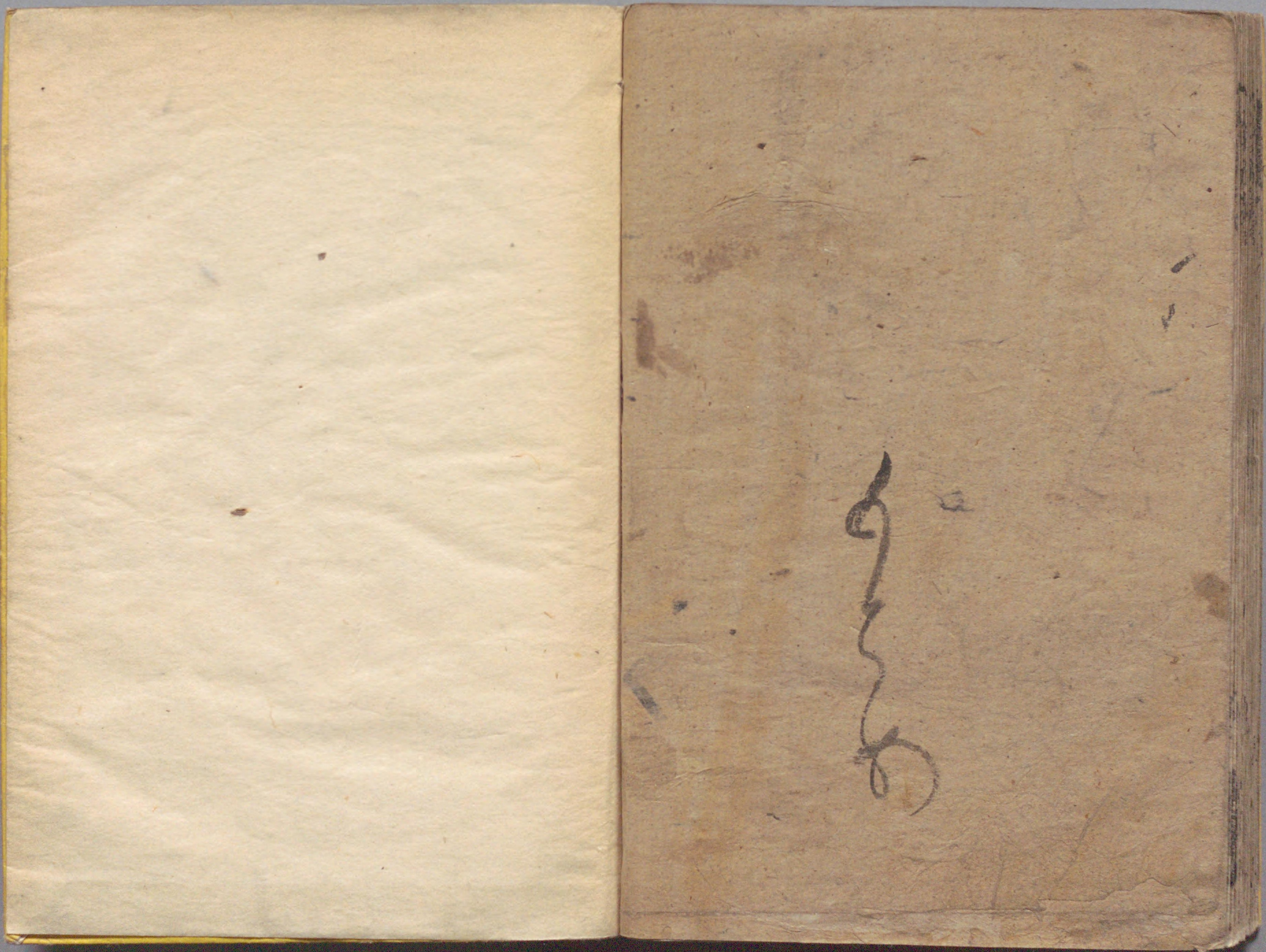
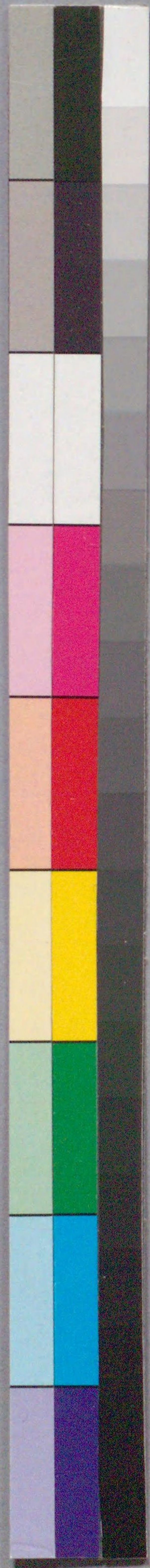






207
288

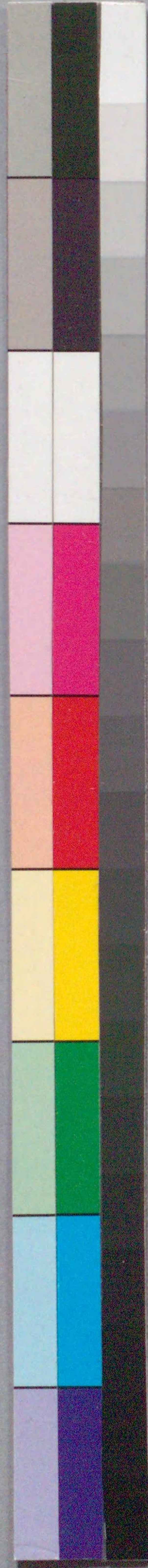




国立国会図書館 唯心鬼打豆 : 3巻 207-288

ガラス使用





国立国会図書館 唯心鬼打豆：3巻 207-288



ガラス使用

