



# Wikipassport

## The «Grand Tour» of the 21<sup>st</sup> century



### Why?

As local organizers of wikievents, we were recursively facing some challenges that we learned to be common to other wikimedians groups. Main ones included:

“How to improve the retention rate of newcomers returning to other wikievents?”  
 “How to *stimulate* wiki contributors to edit off-home?”

“How to give some distinctive feature to GLAM institutions willing to collaborate with Wiki project?”

Last but not least:

“How to oppose the common bias of non-contributors about Wiki world as non-reliable information?”

### The portal on Metawiki



• العربية • dansk • Deutsch • English • español • français  
 • italiano • 日本語 • Nederlands • shqip • Türkçe • 中文  
 (on July 4<sup>th</sup> 2018)

### How does it work?

#### The wikipassport

It's a paper booklet where wikipedians can collect stamps from institutions visited to contribute to wikiprojects.

Wikipassport is not issued by any central authority. Everyone can print it from a file in Commons.

The design of the wikipassport is based on icons to avoid any language being dominant.

#### The wikistation

It's an area in a GLAM institution where wikicontributors are technically facilitated in contributing using information sources from the institution.

Additionally, permanent material describing wikiprojects is available for non-contributors.

After contributing from a wikistation, the wikipassport holder can get a stamp.

### Pictures



The foldable booklet

### How can the wikipassport project help you?

#### The wikipassport

It's a memorabilia from a wikievent that can help newcomers to reconnect to the Wiki world and participate in other events.

It's an appealing small-talks subject that may attract other newcomers to wikievents.

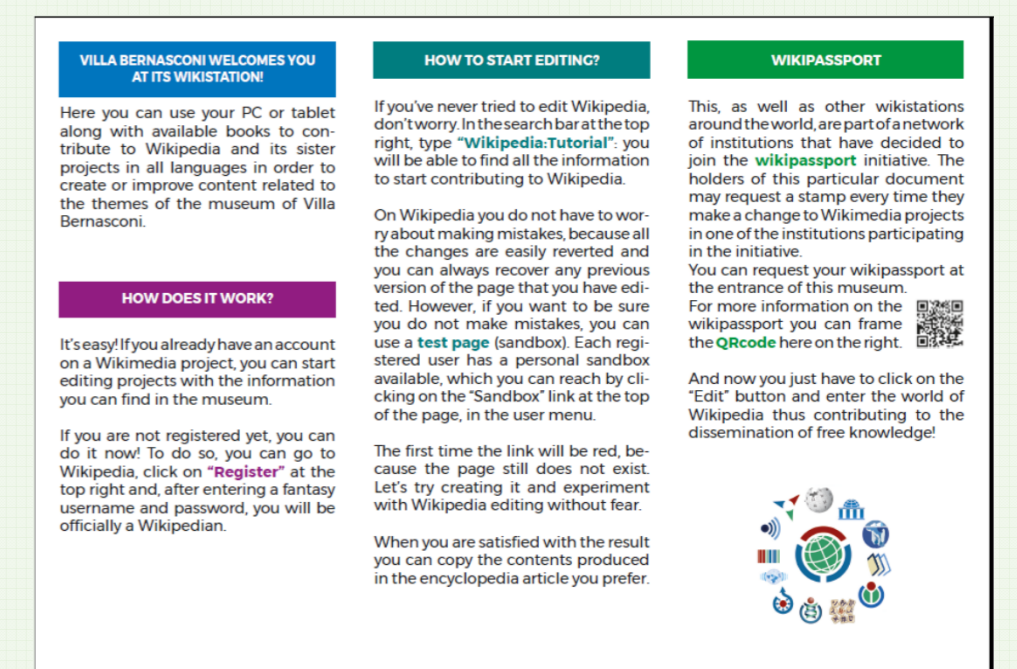
For long-term contributors it's a self-gratification object.

#### The wikistation

It “advertises” about Wiki projects even when you are not in the GLAM institution.

It's a low-cost feature that is affordable also for GLAM institutions with limited budget.

It creates opportunities for additional visitors that are willing to touch all stations to complete the collection of stamps.



The illustrative panel in the first Wikistation in Cernobbio

### The current network



The first 3 stations in northern Italy

### How can you help the wikipassport project ?

**Translating** pages of the Wikipassport portal on Meta into your own language

**Identifying** institutions in your own country to join the network of the wikistations

**Using** wikipassport during your wiki-events as «hook» for new and old contributors



For any questions or additional information you can contact:  
 user:Ysogo, user:Yiyi, user:Tremej

