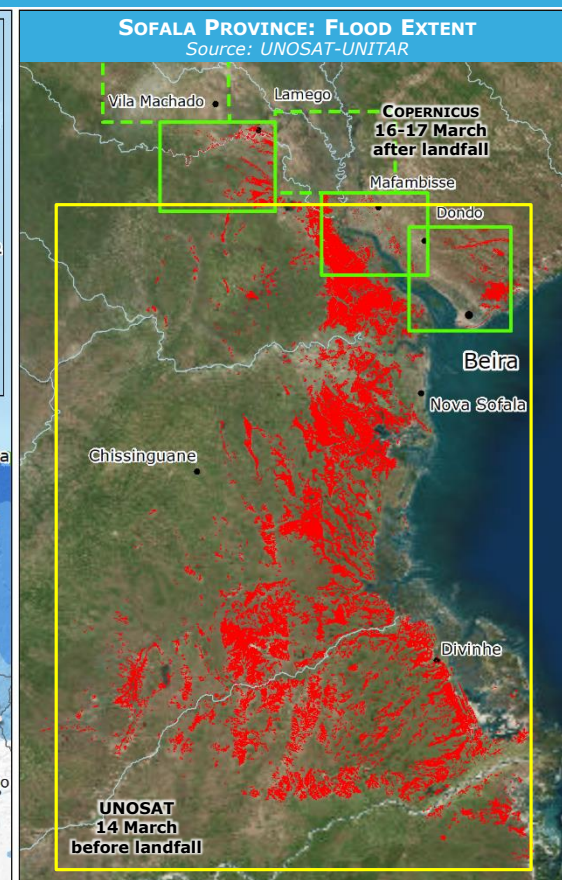
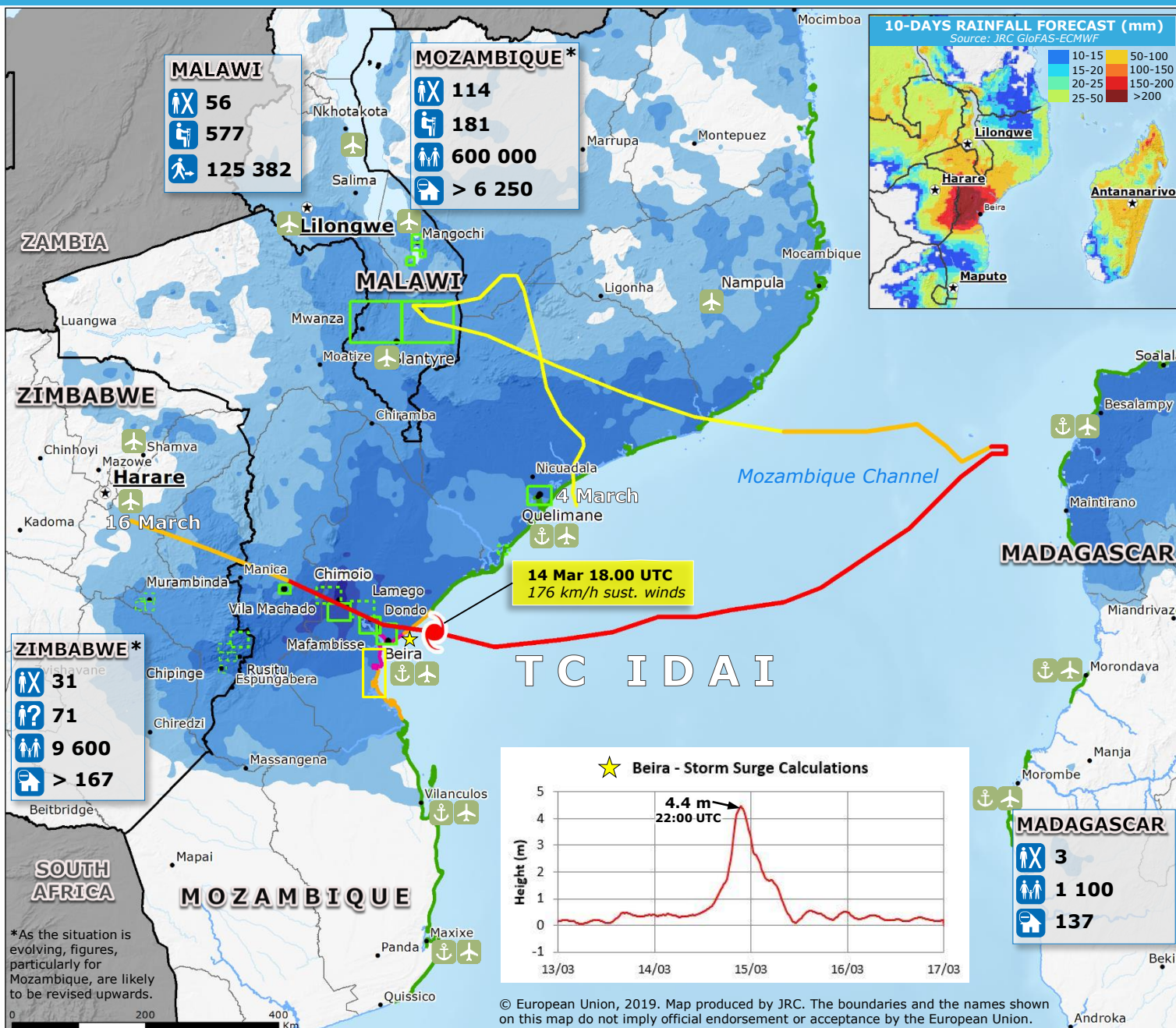


Tropical Cyclone IDAI Impact Overview



TROPICAL CYCLONES (TC) TRACK

- > 118 km/h
- 63 - 118 km/h
- < 63 km/h

STORM SURGE
Source: JRC, Atmospheric HWRF

- 0.2 - 1 m
- 1 - 3 m
- 3 - 4.5 m

PAST 2-WEEKS RAINFALL ACCUMULATION
Source: NASA-GPM

- 50-100
- 100-200
- 200-400
- 400-600
- > 600

FLOOD EXTENT SATELLITE DETECTION

COPERNICUS Activation
EMSR347 Malawi, EMSR348 Mozambique, EMSR349 Zimbabwe

- Flooded area
- Area of interest
- Completed
- Planned

UNOSAT-UNITAR Activation Mozambique

- Flooded area
- Area of interest

Legend:

- Fatalities
- Injuries
- Missing people
- Affected people
- Displaced people
- Damaged houses
- Port
- Airport
- Administrative division boundary

*As the situation is evolving, figures, particularly for Mozambique, are likely to be revised upwards.