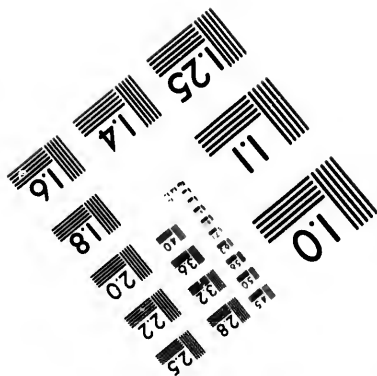
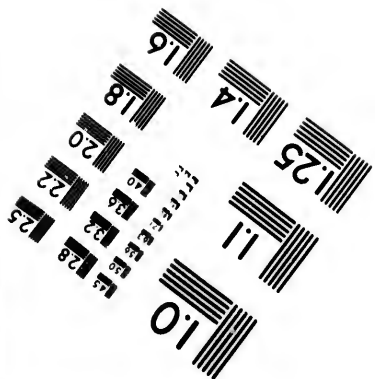
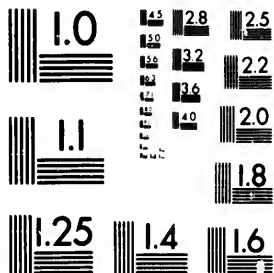


**IMAGE EVALUATION
TEST TARGET (MT-3)**



**CIHM/ICMH
Microfiche
Series.**

**CIHM/ICMH
Collection de
microfiches.**



Canadian Institute for Historical Microreproductions

Institut canadien de microreproductions historiques

1980

Technical and Bibliographic Notes/Notes techniques et bibliographiques

The Institute has attempted to obtain the best original copy available for filming. Features of this copy which may be bibliographically unique, which may alter any of the images in the reproduction, or which may significantly change the usual method of filming, are checked below.

L'Institut a microfilmé le meilleur exemplaire qu'il lui a été possible de se procurer. Les détails de cet exemplaire qui sont peut-être uniques du point de vue bibliographique, qui peuvent modifier une image reproduite, ou qui peuvent exiger une modification dans la méthode normale de filmage sont indiqués ci-dessous.

- Coloured covers/
Couverture de couleur
- Covers damaged/
Couverture endommagée
- Covers restored and/or laminated/
Couverture restaurée et/ou pelliculée
- Cover title missing/
Le titre de couverture manque
- Coloured maps/
Cartes géographiques en couleur
- Coloured ink (i.e. other than blue or black)/
Encre de couleur (i.e. autre que bleue ou noire)
- Coloured plates and/or illustrations/
Planches et/ou illustrations en couleur
- Bound with other material/
Relié avec d'autres documents
- Tight binding may cause shadows or distortion
along interior margin/
La reliure serrée peut causer de l'ombre ou de la
distortion le long de la marge intérieure
- Blank leaves added during restoration may
appear within the text. Whenever possible, these
have been omitted from filming/
Il se peut que certaines pages blanches ajoutées
lors d'une restauration apparaissent dans le texte,
mais, lorsque cela était possible, ces pages n'ont
pas été filmées.
- Additional comments:/
Commentaires supplémentaires:

- Coloured pages/
Pages de couleur
- Pages damaged/
Pages endommagées
- Pages restored and/or laminated/
Pages restaurées et/ou pelliculées
- Pages discoloured, stained or foxed/
Pages décolorées, tachetées ou piquées
- Pages detached/
Pages détachées
- Showthrough/
Transparence
- Quality of print varies/
Qualité inégale de l'impression
- Includes supplementary material/
Comprend du matériel supplémentaire
- Only edition available/
Seule édition disponible
- Pages wholly or partially obscured by errata
slips, tissues, etc., have been refilmed to
ensure the best possible image/
Les pages totalement ou partiellement
obscurcies par un feuillet d'errata, une pelure,
etc., ont été filmées à nouveau de façon à
obtenir la meilleure image possible.

This item is filmed at the reduction ratio checked below/
Ce document est filmé au taux de réduction indiqué ci-dessous.

10X	14X	18X	22X	26X	30X
<input type="checkbox"/>	<input type="checkbox"/>	<input type="checkbox"/>	<input type="checkbox"/>	<input checked="" type="checkbox"/>	<input type="checkbox"/>
12X	16X	20X	24X	28X	32X

The copy filmed here has been reproduced thanks to the generosity of:

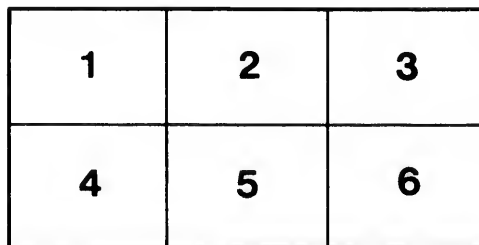
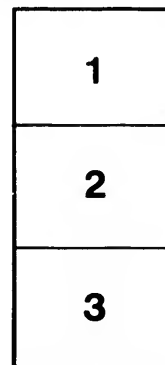
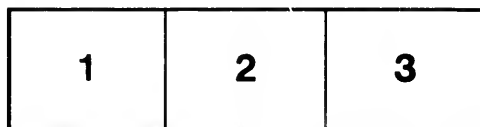
Harold Campbell Vaughan Memorial Library
Acadia University

The images appearing here are the best quality possible considering the condition and legibility of the original copy and in keeping with the filming contract specifications.

Original copies in printed paper covers are filmed beginning with the front cover and ending on the last page with a printed or illustrated impression, or the back cover when appropriate. All other original copies are filmed beginning on the first page with a printed or illustrated impression, and ending on the last page with a printed or illustrated impression.

The last recorded frame on each microfiche shall contain the symbol \rightarrow (meaning "CONTINUED"), or the symbol ∇ (meaning "END"), whichever applies.

Maps, plates, charts, etc., may be filmed at different reduction ratios. Those too large to be entirely included in one exposure are filmed beginning in the upper left hand corner, left to right and top to bottom, as many frames as required. The following diagrams illustrate the method:



L'exemplaire filmé fut reproduit grâce à la générosité de:

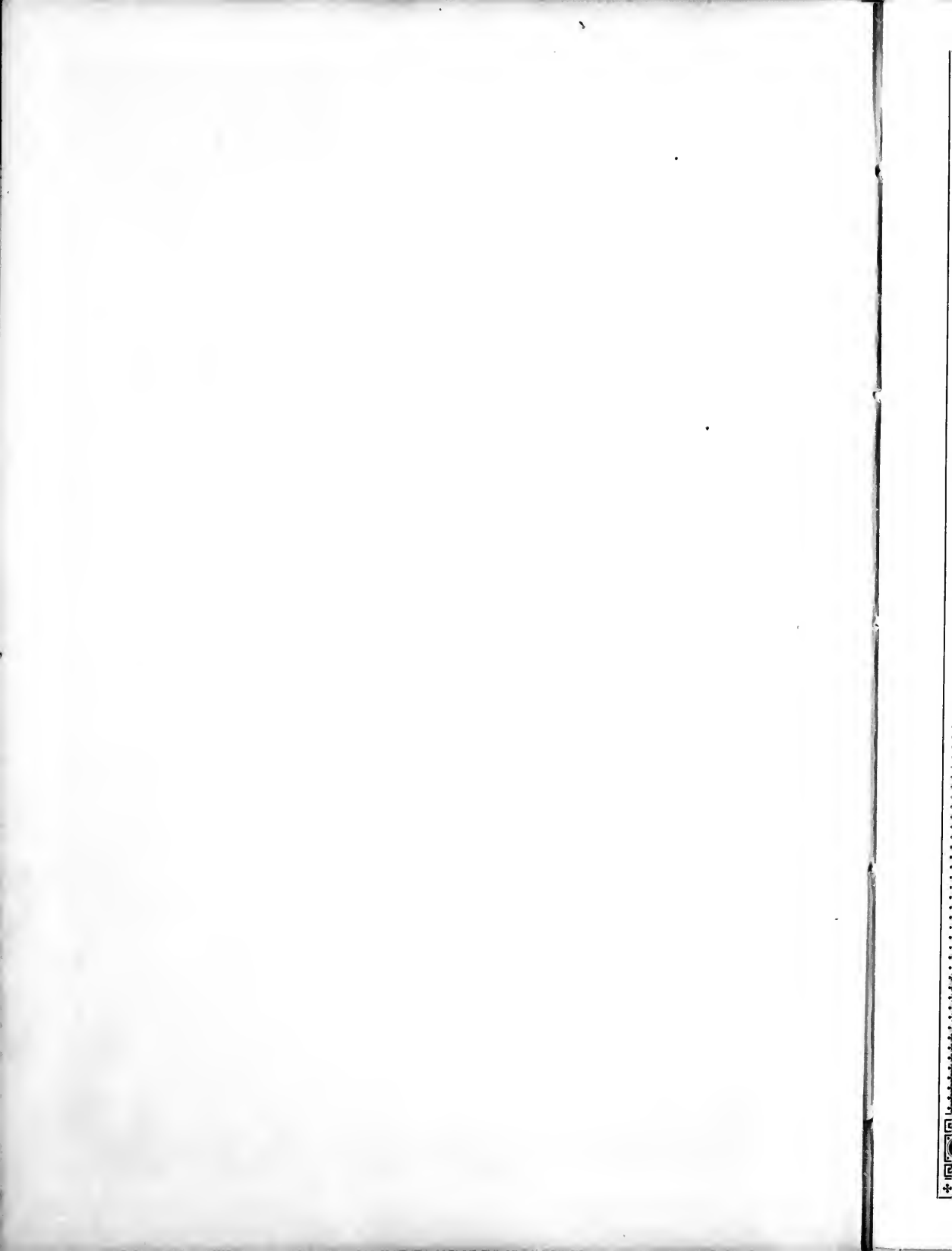
Harold Campbell Vaughan Memorial Library
Acadia University

Les images suivantes ont été reproduites avec le plus grand soin, compte tenu de la condition et de la netteté de l'exemplaire filmé, et en conformité avec les conditions du contrat de filmage.

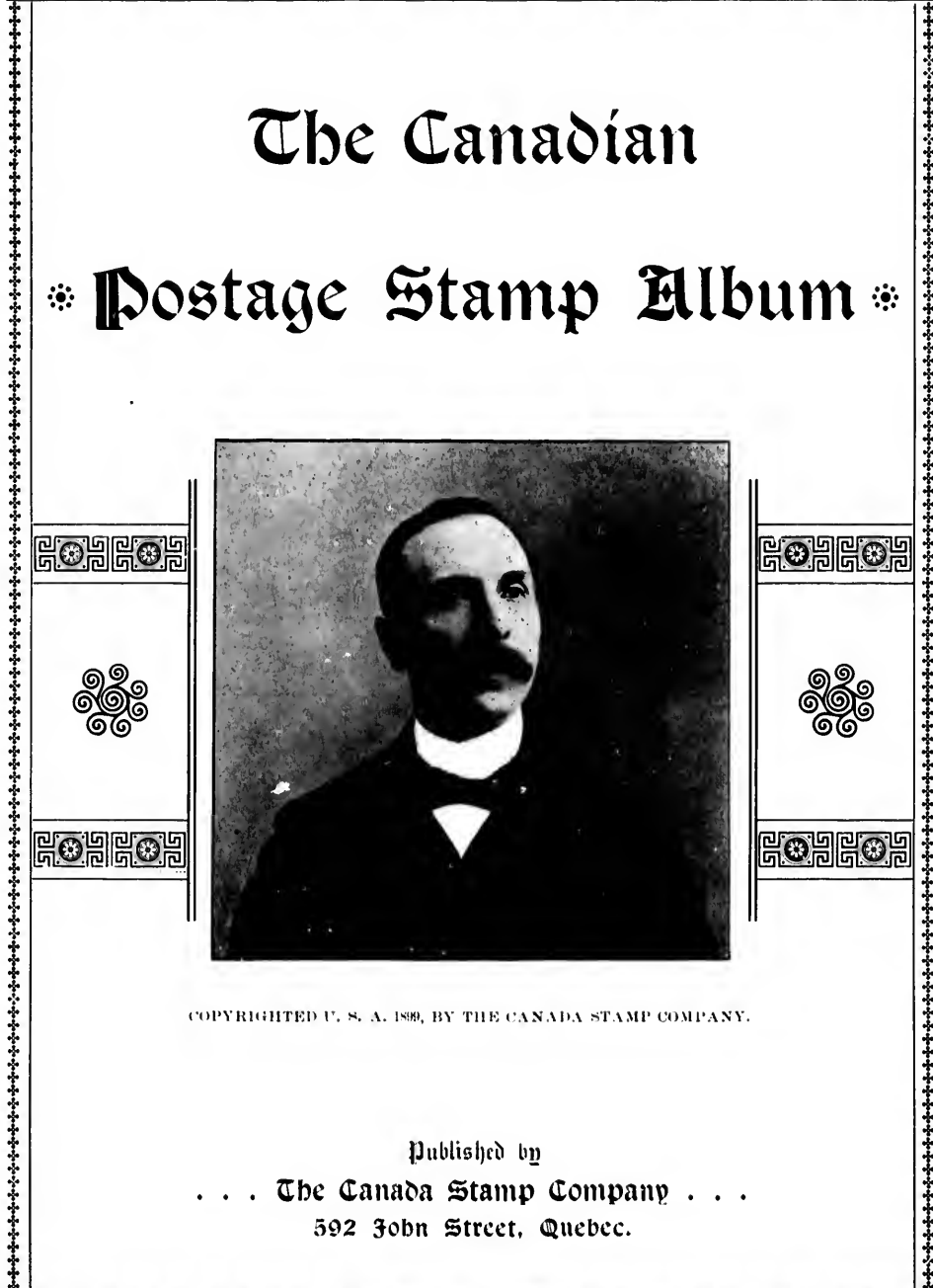
Les exemplaires originaux dont la couverture en papier est imprimée sont filmés en commençant par le premier plat et en terminant soit par la dernière page qui comporte une empreinte d'impression ou d'illustration, soit par le second plat, selon le cas. Tous les autres exemplaires originaux sont filmés en commençant par la première page qui comporte une empreinte d'impression ou d'illustration et en terminant par la dernière page qui comporte une telle empreinte.

Un des symboles suivants apparaîtra sur la dernière image de chaque microfiche, selon le cas: le symbole \rightarrow signifie "A SUIVRE", le symbole ∇ signifie "FIN".

Les cartes, planches, tableaux, etc., peuvent être filmés à des taux de réduction différents. Lorsque le document est trop grand pour être reproduit en un seul cliché, il est filmé à partir de l'angle supérieur gauche, de gauche à droite, et de haut en bas, en prenant le nombre d'images nécessaire. Les diagrammes suivants illustrent la méthode.



A 383
C16



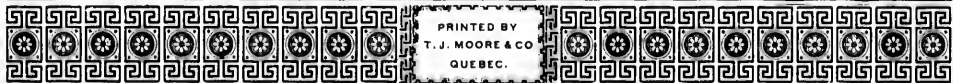
The Canadian

• Postage Stamp Album •



COPYRIGHTED U. S. A. 1899, BY THE CANADA STAMP COMPANY.

Published by
... The Canada Stamp Company ...
592 John Street, Quebec.



PRINTED BY
T. J. MOORE & CO
QUEBEC.

Entered according to Act of Parliament, A.D., 1899, in the Office of the Minister of Agriculture,
Ottawa, by THE CANADA STAMP COMPANY, QUEBEC.



STAMP POSTAGE.

First Came Into Use in 1653, When Paris
Set the Fashion.

Though the use of postage stamps dates back 250 years, only a few collectors can show specimens made earlier than the present century. The custom of attaching postage stamps to letters did not become general until after 1840, and no one tried to collect the few varieties in existence before that. Some of them now would have a value thousands of times greater than their original selling price.

What probably were the first postage stamps were brought into use by the first postal collection and delivery system, which was introduced in Paris in 1653. In that year King Louis XIV. granted a privilege to a municipal dignitary, M. de Valayer, to establish letter boxes in various sections of Paris, he to collect the letters deposited therein and to charge a given fee for their delivery. The deal applied to local letters only. All mail for the outer world had to be handled in the primitive way then existing.

Valayer put up a series of boxes and organized a force of collectors and messengers in short order. But right at the start he encountered a difficulty which threatened to land him in bankruptcy. He had made no provision for the advance payment of the fees for his service, and soon found that most of the recipients of the letters refused to pay for them. He was in a serious quandary, and for a time discontinued the service. He could not afford to station a man at each letter-box to collect the tolls, and no solution to his problem came to him. Finally one day when he was discussing his hard luck in the garden of the royal court he announced his determination to give up the privilege. The Countess de Longueville had been interested in the conversation, and, with that vehemence that always distinguished her noble family, she protested against the amateur postmaster's decision.

"No, no, my dear Chevalier," she said, "you must not think of abandoning so important an innovation. The service will soon become indispensable to all who cannot for one reason or another get about to communicate with others in person. Consider the lame and the sick, think of those who are detained in cloisters and convents and places for punishment, and more particularly have some regard for the lords and ladies of the court, who are on their feet all day in the service of the Crown, but have no opportunity to carry on their little amours. You have found no way to gather in your recompense in advance, but I will give you the recipe. Attention. You print a lot of little certificates with a special design. Each one you will sell for the price you charge for one letter. Pay a small consideration to a shopkeeper near every letter-box for selling the certificates for you, deliver only such letters

to which one of the certificates is attached, and your fortune is made."

Valayer's eyes snapped with joy. He jumped to his feet and, stooping gallantly, kissed the bejeweled hand of the lady. The stamps which he soon had out, he called "Billets de Ports Payé." They were like little labels, and were attached to the letters by means of wafers, one of which was supplied with each stamp sold. Blank spaces were left in the printing for the date of mailing, which served for a cancellation mark, and had to be filled in by the sender. The scheme met immediate success. How long it lasted and what caused its downfall is not recorded. Possibly the whim of a ruler was responsible for its discontinuance. At all events the system fell into oblivion one hundred years later, and with it the use of postage stamps.

The first serious attempt to introduce postage stamps in general was made by the little Kingdom of Sardinia in the year 1819. The certificates were thin sheets of paper to cover letters, which invariably were folded in a uniform way and size. There were no envelopes in those days. The edges of the paper bore the water-mark "Dirizione Generale delle Regie Post." The emblem was a rampant warrior on horseback and the respective values of the stamps were indicated at 10, 25 and 50 centissime, 10 centissime equaling 2 cents in American money. These were replaced by vari-colored wafer stamps the following year, which remained in use until 1836. The first to follow the example of the Sardinians was Great Britain, which established its postage stamp industry in 1840. Concurrently with its adoption of penny postage in that year the British Post Office issued stamped letter wrappers for the first time. The penny wrappers were printed in black ink and those for two pence in blue. The square section of the wrappers intended for the address was decorated with an allegorical design by Macready, emblematic of Britain's world-wide commerce. Under this appeared "Postage One Penny," or two pence respectively. The first regular postage were issued in the year following, the values being the same—one penny and two pence.

Zurich, Brazil and Geneva adopted postage stamps in 1843. Basle followed in 1845. The United States went into the business in 1846, and the specimens still extant of that first issue are all but priceless. Russia fell in line in 1848 with stamped envelopes and France resumed her interest in the subject in 1849, almost 200 years after her first experience with it. Belgium and Bavaria followed suit that year, and Austria, Prussia and Saxony began printing and selling stamps in 1850.

—*Youth's Realm.*



DATES.

CANADA'S	first issue postage stamps, April, 1851.
“	“ “ stamped envelopes, February, 1860.
“	“ “ postcards, June, 1871.
“	“ “ stamped wrappers, May, 1875.
“	“ “ letter sheets, February, 1893.
NOVA SCOTIA'S	first issue postage stamps, September, 1851.
NEW BRUNSWICK'S	first issue postage stamps, September, 1851.
NEWFOUNDLAND'S	first issue postage stamps, January, 1857.
“	“ “ postcards, April, 1873.
“	“ “ stamped envelopes, 1889.
“	“ “ stamped wrappers, 1889.
PRINCE EDWARD ISLAND'S	first issue postage stamps, January, 1861.
VANCOUVER ISLAND'S	first issue postage stamps, July, 1865.
BRITISH COLUMBIA'S	first issue postage stamps, November, 1865.

CANADA'S STAMPS.

The 6 pence, 1851, was used for postage on letters to the United States, except Oregon and California.

The 12 pence, of the same issue, the rarest of Canadian stamps, only about 1500 of which were issued, was used for postage on letters to Great Britain, via Quebec and Halifax. (Sec. 62 Postal Regulations, Canadian Almanac, 1853, page 33.)

The 10 pence, 1855, was used for postage on letters to Great Britain via Cunard packet from New York and Boston.

The 7½ penny, 1857, was also used for postage on letters to Great Britain but via Canadian packet from Quebec.

The ½ penny of the same issue was used for postage on drop letters.

The 5 cent beaver was used for postage on ordinary provincial letters.

The 10 cent, 1859, was used for postage on letters to the United States, except California and Oregon.

The 2 cent, 1860, was used on soldiers' letters to Great Britain.

The 12½ cent of the same year was used on letters to Great Britain via Canadian packet from Quebec.

The 17 cent of the same issue was also used on letters to Great Britain but via Cunard packet from New York and Boston.

The 1868 12½ cent was used for postage on letters to Great Britain via Canadian packet.

The 15 cent of the same issue was used for postage on letters to Great Britain, also, but via Cunard packet.

EXPLANATORY.

RIBBED PAPER is a variety of wove, having lines running up, down, or across, and showing on the back of the stamp.

WOVE PAPER has an even texture, like the paper in books or newspapers.

LAI D PAPER shows parallel lines close together, while vertically laid paper shows the same lines running up and down, instead of across.

IMPERFORATE.—Stamps having no holes or other device to aid in separating them. Stamps with smooth edges.

ROULETTED.—Stamps having a number of straight indentations between them to make them easy of separation without tearing; the common perforation being a series of small holes, as in our present issues.

PROVISIONAL.—Stamps used for a short time until more of the regular issue can be secured. At times it consists of a new value surcharged, sometimes a stamp is cut in two parts, such as a two cent value, and half of it used as a one cent stamp.

SURCHARGED.—A new value, device, or wording of any kind printed on the face of stamps, usually in a different color from the stamps.

WATERMARKED.—Containing letters, figures, or device of some kind in the paper, and done while manufacturing. Watermarks may generally be seen by holding the stamps to the light, but in the case of used stamps it is necessary first to slightly soak them, afterwards drying between blotters.

REPRINTS.—Stamps printed from the original plates after the series has gone out of use.



DOMINION OF CANADA.

Including the former stamp issuing provinces of British Columbia and Vancouver Island, New Brunswick, Nova Scotia and Prince Edward Island.

Also Newfoundland.

Population, including Newfoundland, over 5,000,000.

Issues of Upper and Lower Canada.

SERIES OF 1851.

SERIES OF 1852.

QUEEN VICTORIA

PRINCE ALBERT



12 P.
BLACK.



6 P.
VIOLET.



Laid Paper
3 P.
RED.

Same designs,
Wove paper.
12 P.
BLACK.

6 P.
PURPLE BLACK.

SERIES OF 1855-57.

CARTIER

QUEEN VICTORIA

6 P.
VIOLET.

Wove paper.
3 P.
RED.



10 P.
BLUE.



4 P.
PINK.



7 1/2 P.
GREEN.

CARTIER

6 P.
VIOLET BLACK

10 P.
BLUE.

Thin wove.
3 P.
RED.

6 P.
VIOLET.

SERIES OF 1858.

Wove paper.
3 P.
RED.

Ribbed paper
3 P.
RED.

Ribbed paper.
3 P.
RED.

3 P.
RED.

Ribbed paper
1/2 P.
PINK.

Wove paper
1/2 P.
PINK.

6 P.
VIOLET.

CANADA.

SERIES OF 1859-64. (Wove)



1 C.
PINK.



10 C.
VIOLET BLACK



5 C.
VERMILION.



12 1/2 C.
YELLOW GREEN



17 C.
BLUE.

10 C.
VIOLET.



2 C.
PINK.

Ribbed paper.
5 C.
VERMILION.

12 1/2 C.
BLUE GREEN.

SERIES OF 1868.

10 C.
RED LILAC.

Ribbed paper
1 C.
PINK.



1/2 C.
BLACK.



1 C.
BROWN RED

2 C.
PALE GREEN.

2 C.
DEEP GREEN



3 C.
RED.

3 C.
DEEP RED.



6 C.
DARK BROWN



12 1/2 C.
BLUE.

6 C.
YELLOW BROWN

15 C.
RED LILAC.

12 1/2 C.
DARK BLUE.



15 C.
LILAC.

SERIES OF 1868-69.

1/2 C.
BLACK.

1 C.
BROWN RED.

1 C.
YELLOW.

2 C.
GREEN.



CANADA.

SERIES OF 1868-69. - *Continued.*

3 C. RED.	6 C. BROWN.	12 C. BLUE.	15 C. LILAC.
--------------	----------------	----------------	-----------------

SERIES OF 1870. (Laid paper)

SERIES OF 1869-72. (Wove)


1 C. BROWN RED.	3 C. BRIGHT RED.	15 C. LILAC.	 1 C. YELLOW.	1 C. YELLOW.
1 C. Orange Yellow.	 2 C. GREEN	 3 C. ROSE.	3 C. ORANGE.	3 C. PINK.

SERIES OF 1872-73.

SERIES OF 1875-77.

 6 C. BROWN.	 10 C. ROSE LILAC.	 5 C. SLATE GREEN.	 5 C. OLIVE GREEN	15 C. GREY.
--	--	--	---	----------------

SERIES OF 1882-90.

 4 C. BLACK.	2 C. BLUE GREEN.	3 C. CARMINE RED	3 C. BRIGHT ORANGE	5 C. GREY.
6 C. RICH BROWN	10 C. CARMINE RED.	15 C. BLUE GREY.	3 C. RED.	2 C. YELLOW GREEN



CANADA.


SERIES OF 1888. (Ribbed paper)

1 C. YELLOW.	2 C. BLUE GREEN.	3 C. CARMINE RED.	5 C. GREY.	6 C. BROWN.	10 C. CARMINE RED.
-----------------	---------------------	----------------------	---------------	----------------	-----------------------

SERIES OF 1892-96. (Wove paper)

15 C. GREY LILAC.	 20 C. VERMILION	50 C. DEEP BLUE.	 8 C. SLATE.	8 C. LILAC GREY.	8 C. PURPLE.
----------------------	---	---------------------	---	---------------------	-----------------

JUBILEE SERIES OF 1897.

 1 C. BLACK.	1 C. ORANGE.	2 C. GREEN.	3 C. BRIGHT ROSE.
---	-----------------	----------------	----------------------

5 C. DEEP BLUE	6 C. RICH BROWN.	8 C. VIOLET.	10 C. BROWN VIOLET.
-------------------	---------------------	-----------------	------------------------

15 C. STEEL BLUE.	20 C. VERMILION.	50 C. ULTRAMARINE.	\$ 1. RED.
----------------------	---------------------	-----------------------	---------------



\$ 2. DARK PURPLE.	\$ 3. YELLOW-BROWN.	\$ 4. VIOLET.	\$ 5. OLIVE.
-----------------------	------------------------	------------------	-----------------



[Faint, illegible text or markings, possibly bleed-through from the reverse side of the page]


CANADA.

SERIES OF 1897-98.

 <p>½ C. BLACK.</p>	<p>1 C. BLUE GREEN.</p>	<p>2 C. PURPLE.</p>	<p>2 C. LIGHT PURPLE.</p>	<p>3 C. CARMINE RED.</p>
<p>3 C. RED.</p>	<p>5 C. DARK BLUE.</p>	<p>6 C. CHOCOLATE.</p>	<p>8 C. ORANGE.</p>	<p>10 C. BROWN VIOLET</p>
	<p>2 C. LIGHT GREEN.</p>	<p>2 C. DARK GREEN.</p>	<p>2 C. DEEP MAUVE.</p>	

MAUVE.

SERIES OF 1898-99.

<p>½ C. BLACK.</p>	 <p>1 C. GREY GREEN.</p>	<p>2 C. PURPLE.</p>	<p>2 C. DARK PURPLE.</p>	<p>2 C. LIGHT PURPLE.</p>
<p>3 C. CARMINE.</p>	<p>3 C. CARMINE. Surcharged 2 C.</p>	<p>4 C.</p>	<p>5 C. BLUE.</p>	<p>6 C. BROWN.</p>
<p>7 C.</p>	<p>8 C. ORANGE.</p>	<p>10 C. VIOLET.</p>	<p>15 C.</p>	<p>20 C.</p>



CANADA.

SERIES OF 1898-99—Continued.

50 C.	\$1.	\$2.	\$3.	\$4.	\$5.
-------	------	------	------	------	------

OFFICIALLY SEALED.
BROWN.

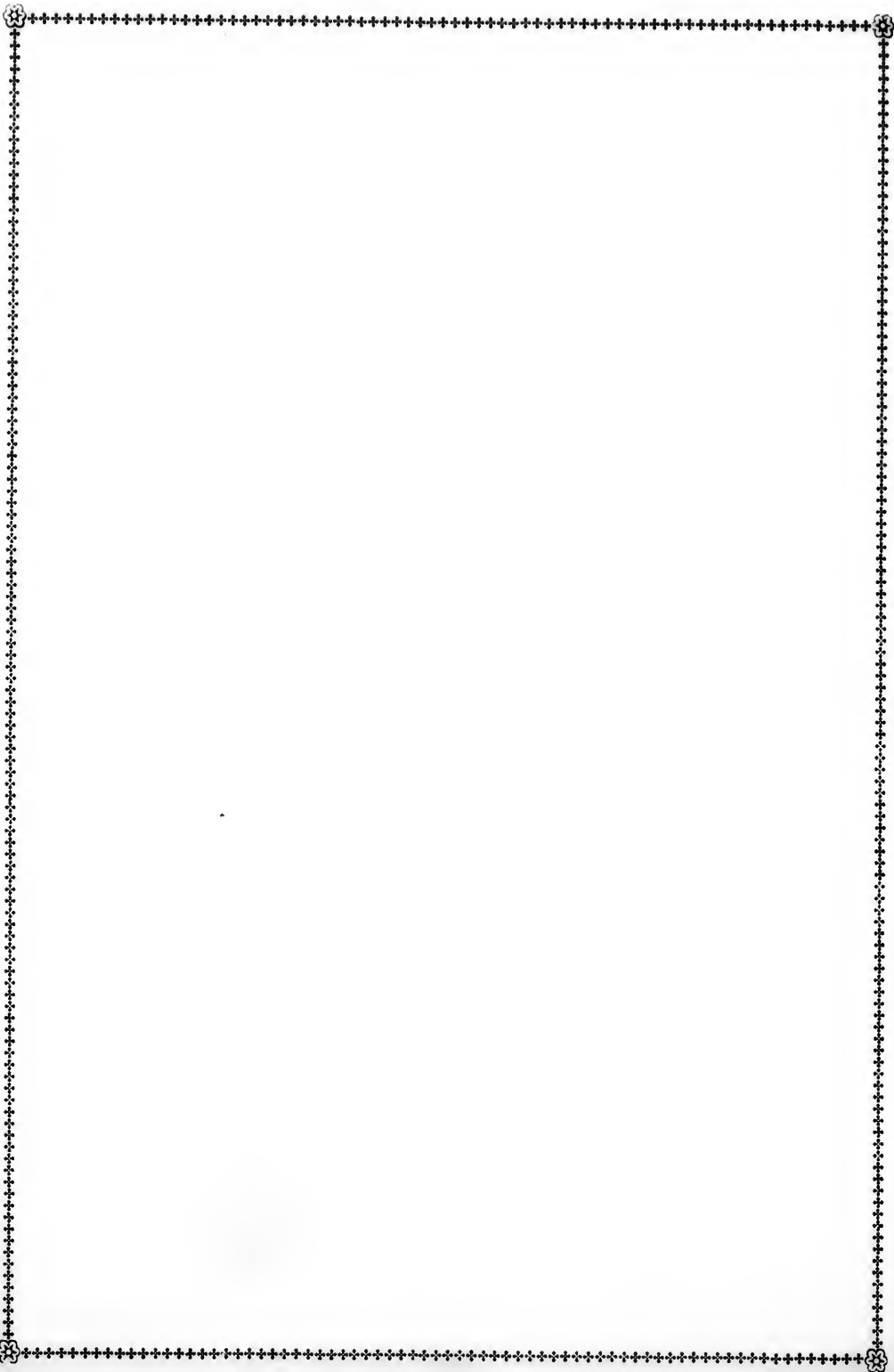


REGISTRATION STAMPS.

2 C. ORANGE.	<p>VERMILION.</p>	2 C. SCARLET.
-----------------	-------------------	------------------

5 C. YELLOW GREEN.	5 C. BLUE GREEN.	8 C. BLUE.
-----------------------	---------------------	---------------







CANADA. ENVELOPE STAMPS.

Yellowish white laid paper

SERIES OF 1860.

Bluish white laid paper.

5 C. VERMILION.	 10 C. BROWN.	10 C. VERMILION.	5 C. VERMILION.	10 C. BROWN.
--------------------	--	---------------------	--------------------	-----------------

SERIES OF 1877.

1895

SERIES OF 1898-99.

 1 C. BLUE.	3 C. RED	 BLUE GREEN	 1 C. DARK GREEN.
---	-------------	---	---

3 C. RED. Surcharged 2 C.	2 C. PURPLE.	2 C. RED	 3 C. RED.	3 C. RED. Surcharged 2 C.
------------------------------------	-----------------	-------------	--	------------------------------------

NEWSPAPER WRAPPERS.

SERIES OF 1875-81.

SERIES OF 1882-85.

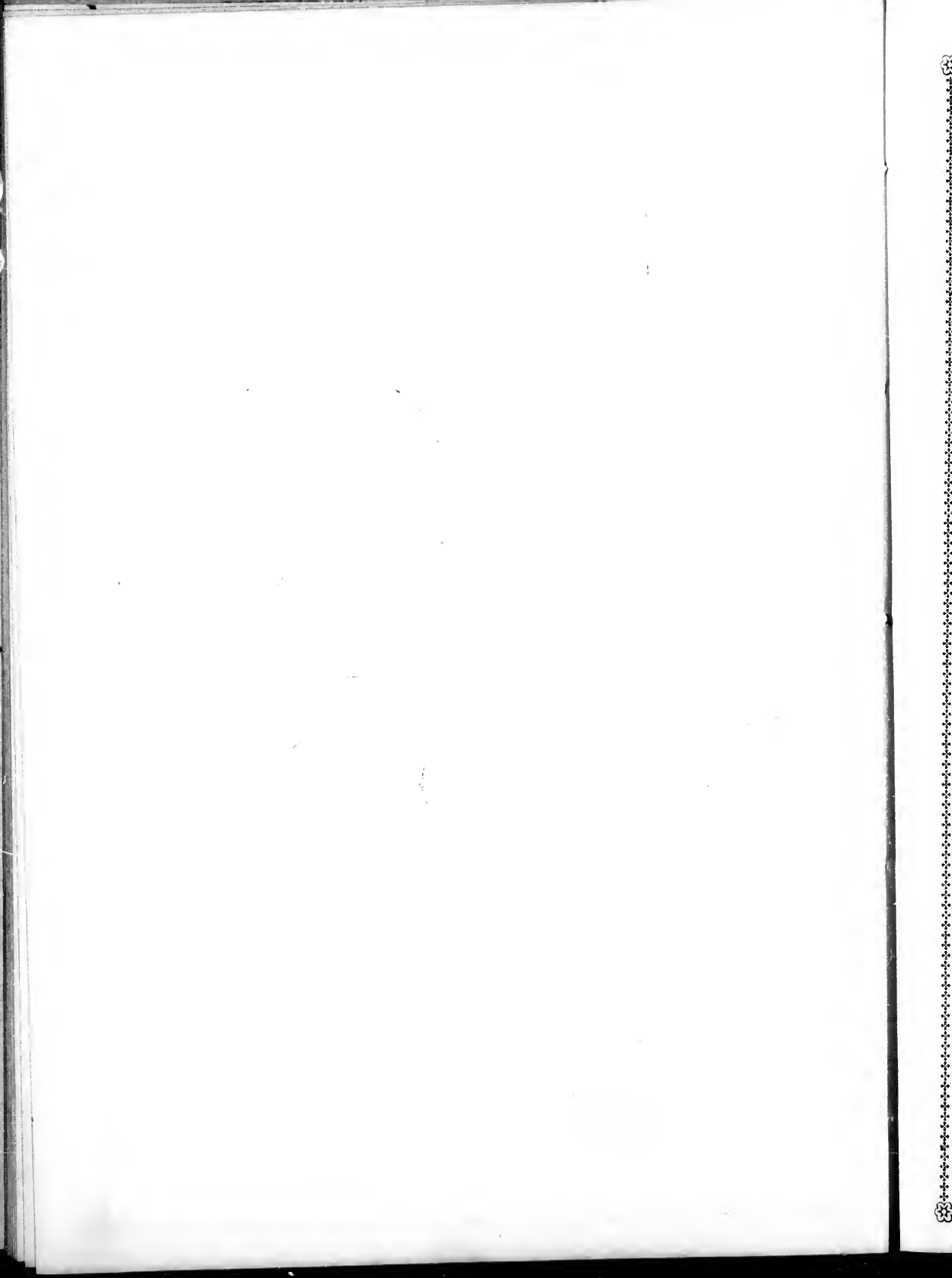
 1 C. BLUE and BUFF	1 C. BLUE. and PALE BUFF.	 PALE YELLOW	 BLUE PALE BUFF.	1 C. BLUE CREAM.
---	------------------------------------	---	--	---------------------

SERIES OF 1887-95.

1 C. BLUE LIGHT BUFF.	1 C. BLUE YELLOW BUFF.	1 C. BLUE BUFF.	1 C. DARK BLUE BUFF.	1 C. BLACK STRAW.
-----------------------------	------------------------------	--------------------	----------------------------	----------------------

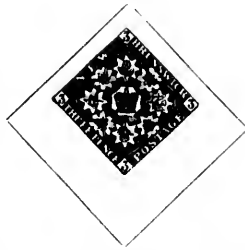
1898

 BLACK YELLOW.	OFFICIAL 1 C. BLUE BUFF.	1 C. GREEN BUFF.
--	--------------------------------	---------------------



NEW BRUNSWICK.

SERIES OF 1851.



6 P. YELLOW.

1 Sh. BRIGHT VIOLET.

SERIES OF 1860-63.



5 C.
OLIVE GREEN.



10 C.
VERMILION.

1 Sh. DULL VIOLET.

SERIES OF 1860-63.

2 C.
ORANGE.



17 C.
BLACK.

5 C.
BLUE GREEN.



1 C. BROWN.

1 C.
RED LILAC.



12½ C. BLUE.



5 C.
BROWN.

NOVA SCOTIA.

SERIES OF 1851-53.



1 P. RED BROWN



3 P. DARK BLUE.

6 P.
YELLOW GREEN.

6 P. DARK GREEN.





1 Sh. DULL VIOLET.

1 Sh. RED VIOLET.



NOVA SCOTIA.

SERIES OF 1860-64. (White Paper.)

		5 C. BLUE.		10 C. VERMILION.	
1 C. BLACK.	2 C. MAUVE.		8 1/2 C. GREEN.		12 1/2 C. BLACK.

(Yellowish Paper)



1 C. BLACK.	2 C. MAUVE.	5 C. BLUE.	8 1/2 C. GREEN.	10 C. VERMILION.	12 1/2 C. BLACK.
----------------	----------------	---------------	--------------------	---------------------	---------------------

PRINCE EDWARD ISLAND.



SERIES OF 1861.

		
2 P. ROSE.	3 P. BLUE.	6 P. GREEN.

SERIES OF 1865. (Yellowish paper.)

	1 P. BROWN ORANGE.	2 P. ROSE.	3 P. BLUE.	6 P. GREEN.	
1 P. Yellow Orange.					9 P. LILAC.

SERIES OF 1868. (White paper.)



	2 P. ROSE.	3 P. BLUE.	4 P. BLACK.	6 P. GREEN.	
4 P. BLACK.					4 P. BROWN.

1870



PRINCE EDWARD ISLAND.

SERIES OF 1872.

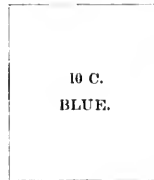
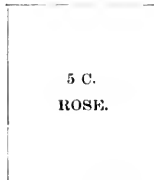
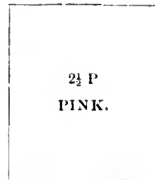
					
1 C. ORANGE.	2 C. BLUE.	3 C. ROSE.	4 C. GREEN.	6 C. BLACK.	12 C. MAUVE.

BRITISH COLUMBIA AND VANCOUVER ISLAND.

ISSUE OF 1861.



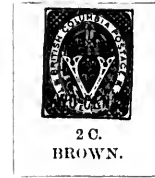
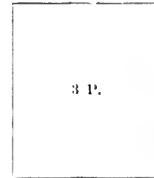
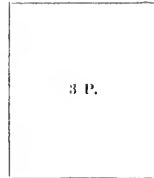
1865



ISSUE OF 1865.



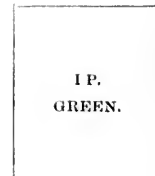
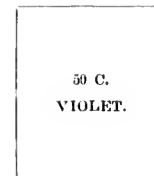
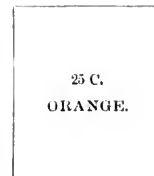
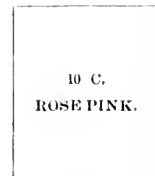
1866



ISSUE OF 1868.



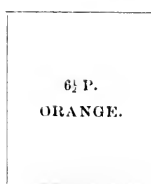
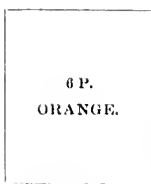
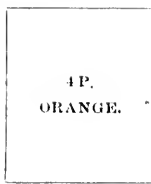
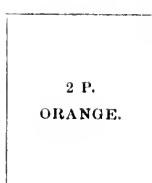
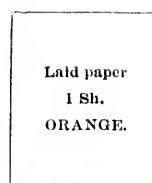
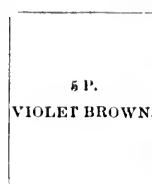
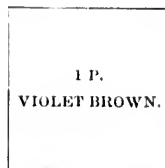
ISSUE OF 1868.



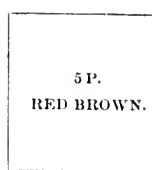
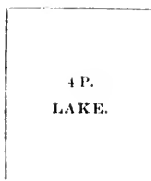
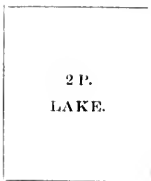
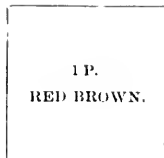


NEWFOUNDLAND.

SERIES OF 1857. (Wove)



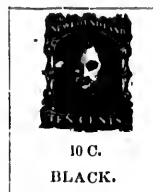
SERIES OF 1863.



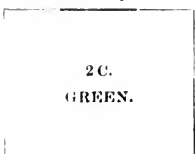


NEWFOUNDLAND.

SERIES OF 1866. (Yellowish paper.)



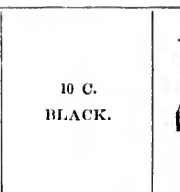
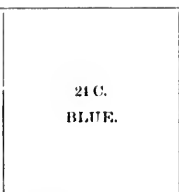
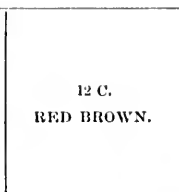
(White Paper.)



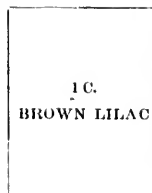
1867-73.

(White Paper.)

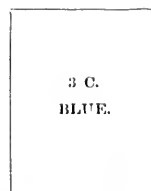
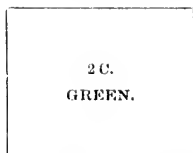
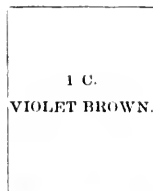
1867-73.



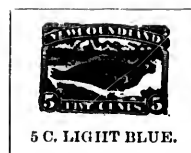
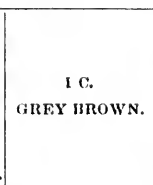
SERIES OF 1867-73.



SERIES OF 1876. (Rouletted.)



SERIES OF 1880.





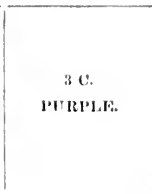
NEWFOUNDLAND.

SERIES OF 1887.

1 C. GREY GREEN.	1 C. DEEP GREEN.	3 C. BROWN.
---------------------	---------------------	----------------

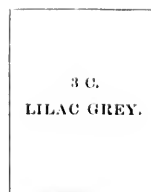
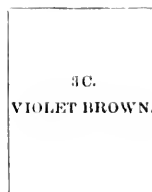
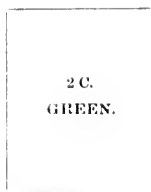
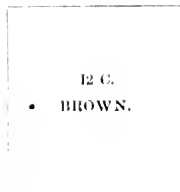


SERIES OF 1890-95.



1890-95

SERIES OF 1896. (Reissue)





NEWFOUNDLAND.

SERIES OF 1897. (Jubilee.)



1 C.
GREEN.

00 C.
BLACK.



2 C.
CLARET.



3 C.
ULTRAMARINE.



5 C.
RED PURPLE.



6 C.
RED BROWN.

8 C.
BROWN ORANGE.

12 C.
DARK BLUE



1 C.
OLIVE.

30 C.
SLATE.

10 C.
SLATE BROWN.

15 C.
RED.

24 C.
BLUE PURPLE.

35 C.
SALMON.

1897. (Surcharged.)

1 C. on 3 C.
LILAC GREY.

1 C. on 3 C.

1 C. on 3 C.

1 C.
ROSE.

2 C.
ORANGE.

SERIES OF 1898.



½ C.
OLIVE.



1 C.
GREEN.



2 C.
CARMINE.



3 C.
ORANGE.

5 C.
BLUE.



NEWFOUNDLAND.
ENVELOPE STAMPS.

SERIES OF 1889.



NEWSPAPER WRAPPERS.



