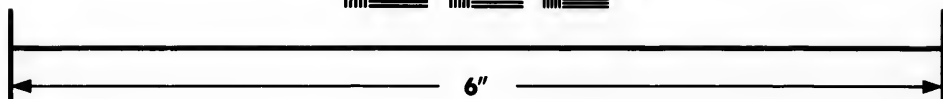
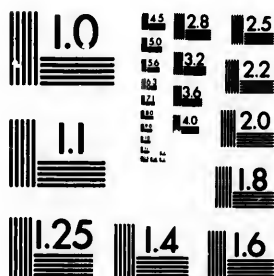


**IMAGE EVALUATION
TEST TARGET (MT-3)**



**Photographic
Sciences
Corporation**

23 WEST MAIN STREET
WEBSTER, N.Y. 14580
(716) 872-4503

0
16
18
20
22
25
28
32
36

**CIHM/ICMH
Microfiche
Series.**

**CIHM/ICMH
Collection de
microfiches.**



Canadian Institute for Historical Microreproductions / Institut canadien de microreproductions historiques

ii
oi
16
18
20
22
25
28
32
36

© 1983

Technical and Bibliographic Notes/Notes techniques et bibliographiques

The Institute has attempted to obtain the best original copy available for filming. Features of this copy which may be bibliographically unique, which may alter any of the images in the reproduction, or which may significantly change the usual method of filming, are checked below.

L'Institut a microfilmé le meilleur exemplaire qu'il lui a été possible de se procurer. Les détails de cet exemplaire qui sont peut-être uniques du point de vue bibliographique, qui peuvent modifier une image reproduite, ou qui peuvent exiger une modification dans la méthode normale de filmage sont indiqués ci-dessous.

- Coloured covers/
Couverture de couleur
- Covers damaged/
Couverture endommagée
- Covers restored and/or laminated/
Couverture restaurée et/ou pelliculée
- Cover title missing/
Le titre de couverture manque
- Coloured maps/
Cartes géographiques en couleur
- Coloured ink (i.e. other than blue or black)/
Encre de couleur (i.e. autre que bleue ou noire)
- Coloured plates and/or illustrations/
Planches et/ou illustrations en couleur
- Bound with other material/
Relié avec d'autres documents
- Tight binding may cause shadows or distortion along interior margin/
La reliure serrée peut causer de l'ombre ou de la distortion le long de la marge intérieure
- Blank leaves added during restoration may appear within the text. Whenever possible, these have been omitted from filming/
Il se peut que certaines pages blanches ajoutées lors d'une restauration apparaissent dans le texte, mais, lorsque cela était possible, ces pages n'ont pas été filmées.
- Additional comments:/
Commentaires supplémentaires:

- Coloured pages/
Pages de couleur
- Pages damaged/
Pages endommagées
- Pages restored and/or laminated/
Pages restaurées et/ou pelliculées
- Pages discoloured, stained or foxed/
Pages décolorées, tachetées ou piquées
- Pages detached/
Pages détachées
- Showthrough/
Transparence
- Quality of print varies/
Qualité inégale de l'impression
- Includes supplementary material/
Comprend du matériel supplémentaire
- Only edition available/
Seule édition disponible
- Pages wholly or partially obscured by errata slips, tissues, etc., have been refilmed to ensure the best possible image/
Les pages totalement ou partiellement obscurcies par un feuillet d'errata, une pelure, etc., ont été filmées à nouveau de façon à obtenir la meilleure image possible.

This item is filmed at the reduction ratio checked below/
Ce document est filmé au taux de réduction indiqué ci-dessous.

10X	14X	18X	22X	26X	30X
<input type="checkbox"/>	<input type="checkbox"/>	<input type="checkbox"/>	<input checked="" type="checkbox"/>	<input type="checkbox"/>	<input type="checkbox"/>
12X	16X	20X	24X	28X	32X

The copy filmed here has been reproduced thanks to the generosity of:

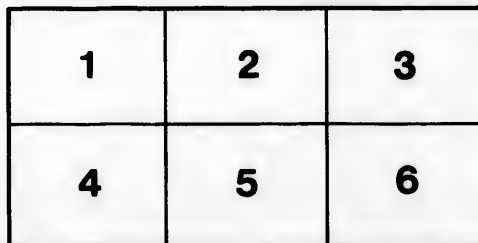
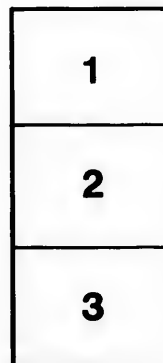
Library of the Public
Archives of Canada

The images appearing here are the best quality possible considering the condition and legibility of the original copy and in keeping with the filming contract specifications.

Original copies in printed paper covers are filmed beginning with the front cover and ending on the last page with a printed or illustrated impression, or the back cover when appropriate. All other original copies are filmed beginning on the first page with a printed or illustrated impression, and ending on the last page with a printed or illustrated impression.

The last recorded frame on each microfiche shall contain the symbol \rightarrow (meaning "CONTINUED"), or the symbol ∇ (meaning "END"), whichever applies.

Maps, plates, charts, etc., may be filmed at different reduction ratios. Those too large to be entirely included in one exposure are filmed beginning in the upper left hand corner, left to right and top to bottom, as many frames as required. The following diagrams illustrate the method:



L'exemplaire filmé fut reproduit grâce à la générosité de:

La bibliothèque des Archives
publiques du Canada

Les images suivantes ont été reproduites avec le plus grand soin, compte tenu de la condition et de la netteté de l'exemplaire filmé, et en conformité avec les conditions du contrat de filmage.

Les exemplaires originaux dont la couverture en papier est imprimée sont filmés en commençant par le premier plat et en terminant soit par la dernière page qui comporte une empreinte d'impression ou d'illustration, soit par le second plat, selon le cas. Tous les autres exemplaires originaux sont filmés en commençant par la première page qui comporte une empreinte d'impression ou d'illustration et en terminant par la dernière page qui comporte une telle empreinte.

Un des symboles suivants apparaîtra sur la dernière image de chaque microfiche, selon le cas: le symbole \rightarrow signifie "A SUIVRE", le symbole ∇ signifie "FIN".

Les cartes, planches, tableaux, etc., peuvent être filmés à des taux de réduction différents. Lorsque le document est trop grand pour être reproduit en un seul cliché, il est filmé à partir de l'angle supérieur gauche, de gauche à droite, et de haut en bas, en prenant le nombre d'images nécessaire. Les diagrammes suivants illustrent la méthode.

re
détails
es du
modifier
er une
filmage

es

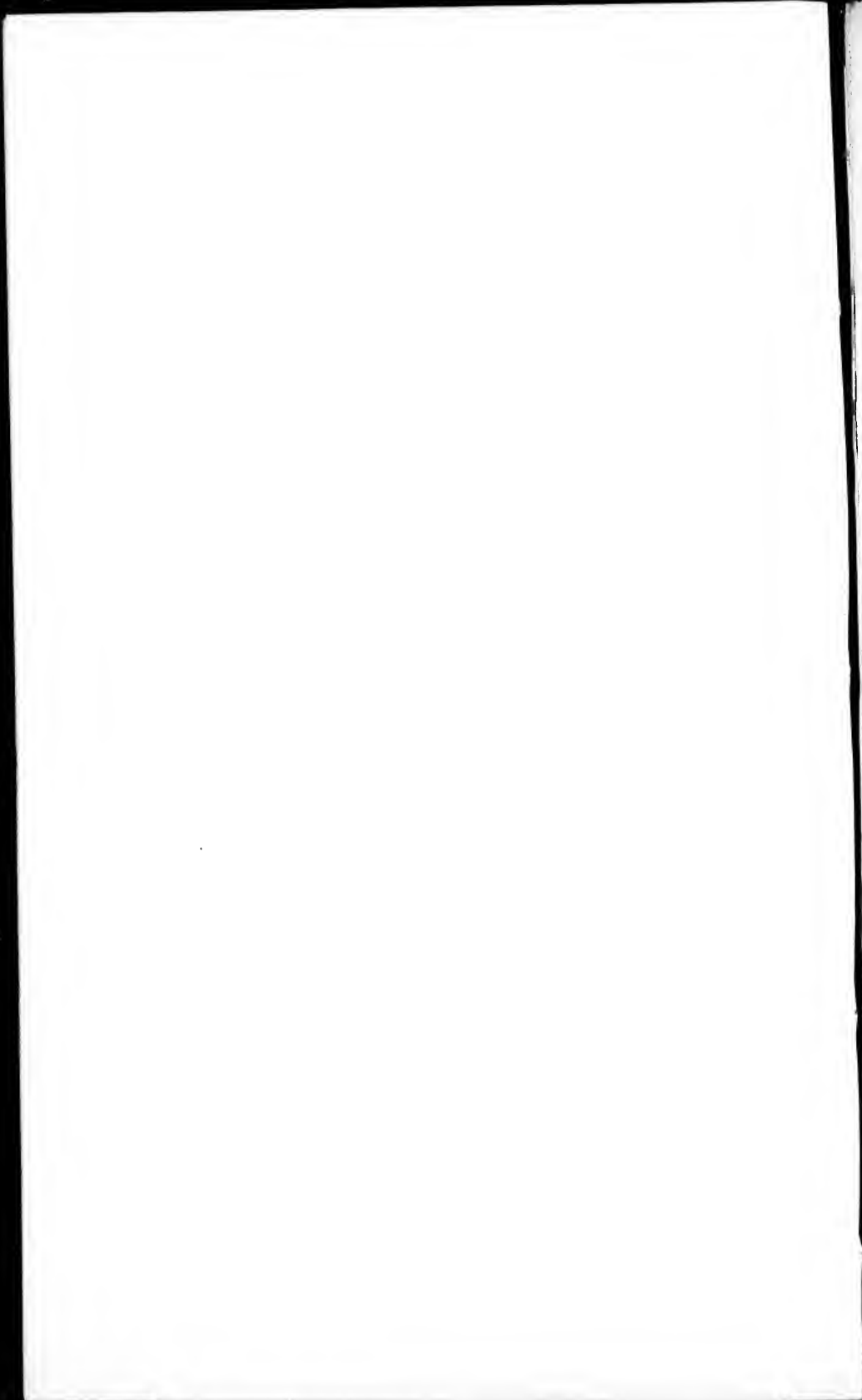
re

y errata
nd to

nt
ne pelure,
çon à



32X



BE
A
G

THE
NEWFOUNDLAND
ALMANAC,

FOR THE YEAR OF OUR LORD

1861,

(BEING THE FIRST AFTER BISSEXTILE, OR LEAP YEAR, AND THE
LATTER PART OF THE TWENTY-FOURTH AND THE BEGINNING
OF THE TWENTY-FIFTH YEAR OF THE REIGN OF
HER MAJESTY QUEEN VICTORIA)

CONTAINING

ASTRONOMICAL, STATISTICAL, COMMERCIAL, LOCAL

AND

General Information

DERIVED FROM THE MOST AUTHENTIC SOURCES.

COMPILED, PRINTED AND PUBLISHED BY

JOSEPH WOODS.

ST. JOHN'S, NEWFOUNDLAND.

MDCCLX.

RARE
 AY
 420
 N49N4
 1861

ASTRONOMICAL PHENOMENA.

ECLIPSES, 1861.

There will be *Four* Eclipses this year; three of the **SUN** and one of the **MOON**; two only of which are visible in this Island, namely, one of the Sun and one of the Moon.

I.—*An annular Eclipse of the Sun*, January 10, invisible in Newfoundland.

II.—*An annular Eclipse of the Sun*, July 7, invisible in Newfoundland.

These two Solar Eclipses are visible in the North and South Pacific Oceans and in the Indian and Great Southern Oceans.

III.—*A partial Eclipse of the Moon*, December 17, visible in Newfoundland:—

	h. m.	
First contact with Penumbra (Dec.17)	2 12m.	}
First contact with Shadow	3 55m.	
Middle of Eclipse	4 46m.	
Last contact with Shadow	5 37m.	
Last contact with Penumbra	7 20m.	

Magnitude of Eclipse (Moon's diameter=1) 0.185

IV.—*A Total Eclipse of the Sun*, December 31, visible as a partial one in Newfoundland.

This eclipse will commence on the Earth generally near the southern part of the Isthmus of Darien, on the 31st December at sun-rise, and after traversing the more northern portions of the American Continent, passing rapidly over the Atlantic Ocean, visiting Newfoundland, Greenland, the British Islands, &c., will terminate on the earth generally in Africa, at longitude $12^{\circ} 38' E.$, near the shores of the Mediterranean Sea, at sun-set.

ELEMENTS :

	d.	h.	m.	s.
Greenwich Mean Time of Conjunction in R.A.	31	1	58	22.3
Sun's and Moon's Right Ascension		18	43	19.65
	deg.	min.	sec.	
Moon's Declination	S.	22	33	24.5*
Sun's Declination	S.	23	5	1.4
Moon's hourly motions in R.A.			38	55.7
Sun's hourly motion in R.A.			2	45.8
Moon's hourly motion in Declination	N.		6	3.2
Sun's hourly motion in Declination	N.			11.4
Moon's Equatorial Horizontal Parallax		59		56.1
Sun's Equatorial Horizontal Parallax				8.7
Moon's true Semidiameter		16		22.1
Sun's true Semidiameter		16		18.2

PLANETARY MOVEMENTS.

TRANSIT.—There will be a transit of *Mercury* over the Sun's disc November 12, invisible in this Island

OCCULTATION.—*Mars* will be occulted by the Moon on the evening of May 12, visible in this Island.

MORNING AND EVENING STARS.—*Venus* will be Morning Star until May 11, then Evening Star the rest of the year.

Mars will be Evening Star until August 27, then Morning Star the rest of the year.

Jupiter will be Morning Star till February 10, then Evening Star till August 30, then Morning Star the rest of the year.

Saturn will be Morning Star until February 24, then Evening Star until September 5.

EQUINOXES, &c.

		d.	h.	m.
Vernal Equinox	March	20	10	52 m.
Summer Solstice	June	21	7	39 m.
Autumnal Equinox	Sept.	22	9	52 e.
Winter Solstice	Dec.	21	3	39 e.

LENGTH OF SEASONS, &c.

		d.	h.	m.
Sun in Winter signs	89	1	9
Sun in Spring signs	92	20	35
Sun in Summer signs	93	14	13
Sun in Autumnal signs	89	17	47
Tropical Year	365	5	44
Sun North of the Equator	186	10	48
Sun South of the Equator	178	18	56
Difference	7	15	52

CALENDAR.

Golden Number	19	Dominical Letter	F.
Epaet	18	Roman Indiction	4
Solar Cycle	22	Julian Period	6574

CHRONOLOGICAL ERAS.

The Year 5622 of the Jewish Era, commences September 5, 1861.

Ramadân (Month of Abstinence observed by the Turks) commences on March 13, 1861.

The Year 1278 of the Mohammedan Era commences July 9, 1861.

FIXED AND MOVEABLE FESTIVALS, ANNIVERSARIES, &c.

Epiphany	Jan. 6	Pentecost—WhitSunday	May 19
Septuagesima Sunday	27	Birth of Q. Victoria	24
Shrove Sunday	Feb. 10	Trinity Sunday	26
Ash Wednesday	13	Corpus Christi	30
1st Sunday in Lent	17	Accession of Q. Victoria	June 20
St. David	March 1	Proclamation	21
St. Patrick	17	St. John Baptist—Midsummer	24
Palm Sunday	24	Birth of Prince Albert	Aug. 26
Annunciation—Lady Day	25	St. Michael	Sept. 29
Good Friday	29	Birth of Prince of Wales	Nov. 9
Easter Sunday	31	St. Andrew	30
Low Sunday	April 7	1st Sunday in Advent	Dec. 1
St. George	23	St. Thomas	21
Rogation Sunday	May 5	Christmas Day	25
Ascension Day—Holy Thursday	9		

NOTE.—The Tide Tables (in the Calendar pages) may be rendered applicable to various other places on the coast, by simply adding or subtracting as the case may be, the difference between the times of High Water on the Full and Change of the Moon at St. John's, and the times of the full tide at any other harbor; for example, to find the time of High Water at any of the principal harbors of Conception Bay, add 45 minutes to the time at which it will be High Water at St. John's; for Placentia Bay, add 2 hours; for St. Peter's, 1h. 50m.; for Ferrolle, on the French Shore, 4 hours, &c.—See Table LVII. of Norie's Epitome.

ST. JOHN'S.

True Latitude of Church Hill	47° 34' 30 North.
Longitude (West of Greenwich)	52 44 0 West

THE WEATHER.

Result of Meteorological Observations for the Years 1857, 1858, 1859, taken from the Colonial Building, St. John's, Newfoundland, by E. M. J. DELANEY, Observer.—Lat. N. 47° 34' 30"—Long. W. 52° 39' 45"—170 feet above sea level.

EIGHTEEN HUNDRED AND FIFTY-SEVEN.

	Inches.	Date.
Max. height of Barometer corrected to sea level	30.85	Jan. 23rd
Min. height of Barometer corrected to sea level	28.78	Jan. 9th
Mean for year do. do.	29.31	
Max. height of Thermometer	89°	July 27th
Min. do. do.	-5°	Feb. 13th
Mean temperature for year	42°	
Quantity of Rain including melted Snow in inches	47.00	the year
Prevailing Winds	WNW.	
Rained 129 day.		

EIGHTEEN HUNDRED AND FIFTY-EIGHT.

Max, height of Bar. corrected to sea level	30.33	Jan. 16th
Min. do. do.	28.70	Mar. 26th
Mean do. do.	29.51	
Max. height of Thermometer	84°	Aug. 12th
Min. do. do.	-2°	Feb. 11th
Mean temp. for year	41°	
Quantity of Rain including melted Snow in inches	50.860	the year
Prevailing Winds	NW.	
Rain fell on 98 days; Fog 66 days.		

EIGHTEEN HUNDRED AND FIFTY-NINE.

Max. height of Bar. corrected to sea level	30.56	Jan. 25th
Min. do. do.	28.72	Dec. 5th
Mean do. do.	29.79	
Max. height of Ther.	96°	July 13th
Min. do. do.	-8°	Mar. 3rd
Mean temp. for year	44°	
Quantity of Rain including melted Snow in inches	64.220	the year
Prevailing Winds	NNW. & SSW.	
Rain fell on 110 days; Snow on 54; Fog 88; Thunder and Lightuign on 6		

JANUARY, 31 DAYS.

MOON'S PHASES.

LAST QUARTER 3rd day, 10h, 21m, Evening.
 NEW MOON 10th day, 11h, 55m, Evening.
 FIRST QUARTER 19th day, 0h, 28m, Morning.
 FULL MOON 26th day, 1h, 34m, Evening.

Day of W.	Day of M.	Sun		G. app. time.		High Water at St. John's,		Memoranda.
		rises at St. John's.	Sun sets	Sun's Declination.	Equation of time.	p. m.	a. m.	
T	1	H. M. 7 55	H. M. 4 13	O 23 00	M. S. 3 58	H. M. 10 49	H. M. 10 27	First Local Legislature met, 1833.
W	2	7 54	4 14	22 54	4 26	11 34	11 11	
Th.	3	7 54	4 15	22 49	4 54		11 56	Quebec founded, 1608.
F	4	7 54	4 16	22 42	5 21	0 45	0 21	Epiphany.
S	5	7 54	4 17	22 36	5 48	1 43	1 13	
Su.	6	7 54	4 19	22 28	6 15	2 55	2 18	Catholic Cathedral opened, 1850.
M	7	7 53	4 20	22 21	6 41	4 16	3 34	
T	8	7 53	4 21	22 13	7 6	5 38	4 56	1st Sun. after Epiphany
W	9	7 53	4 22	22 5	7 31	6 27	5 55	
Th.	10	7 52	4 24	21 56	7 55	7 23	6 56	Amalgam'd. Assembly closed, 1847.
F	11	7 52	4 25	21 46	8 19	8 10	7 48	
S	12	7 51	4 26	21 37	8 42	8 53	8 32	Franklin born, 1706.
Su.	13	7 51	4 27	21 26	9 5	9 31	9 12	
M	14	7 50	4 29	21 16	9 27	10 6	9 48	Watt born, 1736.
T	15	7 50	4 30	21 5	9 48	10 40	10 23	
W	16	7 49	4 31	20 54	10 8	11 13	10 58	2d Sun. after Epiphany
Th.	17	7 48	4 33	20 42	10 28	11 46	11 30	
F	18	7 47	4 34	20 30	10 47	0 20		Amer'n. Independence acknowledged, 1783
S	19	7 46	4 36	20 17	11 6	0 59	0 39	
Su.	20	7 45	4 37	20 4	11 24	1 47	1 25	Duke of Kent died, 1820.
M	21	7 44	4 38	19 51	11 41	2 57	2 19	
T	22	7 44	4 40	19 37	11 57	4 15	3 35	Princess Royal married, 1858.
W	23	7 43	4 42	19 23	12 12	5 33	4 56	
Th.	24	7 42	4 43	19 9	12 27	6 7	5 50	Septuagesima. [1850
F	25	7 41	4 45	18 54	12 41	6 51	6 35	
S	26	7 40	4 46	18 39	12 54	7 48	7 26	[opened, 1860.
Su.	27	7 38	4 48	18 24	13 6	8 32	8 10	
M	28	7 37	4 49	18 8	13 18	9 12	8 52	1st Sess. 7th Gen. As.
T	29	7 36	4 51	17 52	13 29	9 51	9 33	
W	30	7 35	4 52	17 35	13 38	10 33	10 12	
Th.	31	7 33	4 54	17 19	13 47	11 12	10 54	

JANUARY.—January (Latin, *Januarius*) was so called by the Romans from Janus, one of their superior deities, to whom the first day of the year was sacred, and through whom they offered their prayers to the gods: hence the name is used to signify gate of the year. Janus was represented with two faces: one old and wrinkled, and looking backward; the other face young and smiling, and looking forward.

FEBRUARY, 28 DAYS.

MOON'S PHASES.

LAST QUARTER 2nd day, 6h, 27m, Morning.
 NEW MOON 9th day, 4h, 32m, Evening.
 FIRST QUARTER 17th day, 8h, 47m, Evening.
 FULL MOON 25th day, 1h, 10m, Morning.

Day of W.	Day of M.	Sun		G. app. time.		High		Memoranda.
		rises	Sun sets	Sun's Declination.	Equa. of time add.	Water at St. John's,		
		H. M.	H. M.	O	M. S.	H. M.	H. M.	
F	1	7 32	4 55	S 17 2	13 55	11 56	11 33	Sebas. docks des. 1856.
S	2	7 31	4 57	16 44	14 3	0 41		Candlemas Day.
SU.	3	7 29	4 59	16 27	14 9	1 34	1 6	Sexagesima.
M	4	7 28	5 0	16 9	14 15	2 49	2 8	French War declared, 1793.
T	5	7 27	5 2	15 50	14 19	4 19	3 33	Fishery Conven. laid before Legis. 1857.
W	6	7 25	5 3	15 32	14 23	5 55	5 7	Mary Queen of Scots beheaded, 1587.
Th.	7	7 24	5 5	15 13	14 27	6 22	6 8	Shrove Sunday. Qn. Victoria mar. 1840.
F	8	7 22	5 7	14 54	14 29	7 17	6 52	Ash Wednesday.
S	9	7 20	5 8	14 35	14 30	8 2	7 42	Valentine's Day.
SU.	10	7 19	5 10	14 16	14 31	8 38	8 20	Capt. Cook killed, 1779
M	11	7 17	5 11	13 56	14 31	9 12	8 56	1st Sun. in Lent. B.I. Soc'y. founded, 1806
T	12	7 16	5 13	13 36	14 30	9 42	9 28	18—Luther died, 1546.
W	13	7 14	5 15	13 16	14 29	10 13	9 57	Washington born, 1732
Th.	14	7 13	5 16	12 56	14 27	10 41	10 27	2nd Sunday in Lent.
F	15	7 11	5 18	12 35	14 24	11 10	10 55	24—Napoleon escaped from Elba, 1815.
S	16	7 9	5 19	12 14	14 20	11 40	11 24	
SU.	17	7 7	5 21	11 53	14 16	11 56		
M	18	7 6	5 22	11 32	14 10	0 56	0 34	
T	19	7 4	5 24	11 11	14 5	1 56	1 23	
W	20	7 2	5 26	10 49	13 58	3 26	2 39	
Th.	21	7 0	5 27	10 28	13 51	4 57	4 11	
F	22	6 59	5 29	10 6	13 44	6 8	5 39	
S	23	6 57	5 30	9 44	13 35	6 41	6 22	
SU.	24	6 55	5 32	9 22	13 26	7 28	7 5	
M	25	6 52	5 34	8 59	13 17	8 8	7 48	
T	26	6 51	5 35	8 37	13 7	8 49	8 29	
W	27	6 49	5 36	8 15	12 56	9 29	9 9	
Th.	28	6 48	5 38	S 7 52	12 45	10 10	9 49	

FEBRUARY.—February (Latin, *Februarius*) received its name from Februalia, a feast of sacrifices and purifications held by the Romans in this month, in the vain hope of being cleansed from the sins of the whole year. It corresponds to ADAR (Ezra vi. 15), the sixth civil, and twelfth sacred month of the Jews. By the Saxons it was called *Sproutkele*, as cabbages begin to sprout now; and also *Sol-monath*, the month when pancakes were offered to Sol, or the Sun.

MARCH, 31 DAYS.

MOON'S PHASES.

LAST QUARTER 3rd day, 3h, 43m, Evening.
 NEW MOON 11th day, 10h, 5m, Morning.
 FIRST QUARTER 19th day, 1h, 59m, Evening.
 FULL MOON 26th day, 10h, 42m, Morning.

Day of W.	Day of M.	Sun		G. app. time.		High Water at St. John's,		Memoranda.
		rises at St. John's.	Sun sets at St. John's.	Sun's Declination.	Equa. of time. add.	p. m.	a. m.	
		H. M.	H. M.	o	M. s.	H. M.	H. M.	
F	1	6 45	5 39	S 7 29	12 33	10 50	10 30	St. David.
S	2	6 44	5 41	7 6	12 21	11 31	11 10	J. Wesley died, 1791.
Su.	3	6 42	5 42	6 43	12 8	11 53	11 53	3rd Sunday in Lent.
M	4	6 40	5 44	6 20	11 55	1 11	0 43	B. and F. Bible Society established, 1804.
T	5	6 38	5 45	5 57	11 41	2 30	1 45	
W	6	6 36	5 47	5 34	11 27	4 7	3 19	
Th.	7	6 34	5 48	5 10	11 13	5 36	4 55	
F	8	6 32	5 50	4 47	10 57	6 10	5 53	Bernadotte died, 1844
S	9	6 30	5 51	4 24	10 42	6 59	6 36	
Su.	10	6 28	5 53	4 0	10 26	7 40	7 20	4th Sunday in Lent.
M	11	6 26	5 54	3 37	10 10	8 14	7 57	
T	12	6 24	5 56	3 13	9 54	8 44	8 29	
W	13	6 22	5 57	2 49	9 37	9 12	8 57	
Th.	14	6 20	5 58	2 26	9 20	9 41	9 27	Admiral Byng shot, 1757.
F	15	6 18	5 59	2 2	9 3	10 10	9 55	
S	16	6 16	6 1	1 38	8 46	10 38	10 24	
Su.	17	6 14	6 3	1 15	8 28	11 9	10 53	St. Patrick. [1848
M	18	6 12	6 4	0 51	8 11	11 45	11 26	Princess Louisa born, Sir L. Newton died, 1727
T	19	6 10	6 6	0 27	7 53	0 28		
W	20	6 8	6 7	S 0 4	7 35	1 22	0 52	
Th.	21	6 6	6 8	N 0 20	7 17	2 52	2 5	
F	22	6 4	6 10	0 44	6 58	4 23	3 37	
S	23	6 2	6 11	1 7	6 40	5 40	5 5	[Elizabeth died, 1603
Su.	24	6 0	6 13	1 31	6 22	6 10	5 55	Palm Sunday. Queen
M	25	5 58	6 14	1 54	6 3	6 57	6 35	Annunciation.
T	26	5 56	6 16	2 18	5 45	7 40	7 19	
W	27	5 54	6 17	2 42	5 26	8 20	8 0	[Russia, 1854:
Th.	28	5 52	6 18	3 5	5 8	9 3	8 41	Allies declare war agt.
F	29	5 50	6 20	3 28	4 50	9 44	9 24	GOOD FRIDAY.
S	30	5 48	6 21	3 52	4 31	10 28	10 6	Peace with Russia 1856
Su.	31	5 46	6 23	N 4 15	4 13	11 14	10 51	EASTER SUNDAY.

MARCH.—March (Latin, *Martius*) was so named by the Romans in honor of Mars, their god of war. In this month the Gothic tribes went out on warlike expeditions. It answers to NISAN, or ABIB (Neh. ii. 1; Deut. xvi. 1), the seventh of the civil, and the first of the sacred year of the Jews. By the Saxons it was named *Hlyd-monath*, the loud or windy month.

APRIL, 30 DAYS.

MOON'S PHASES.

LAST QUARTER 2nd day, 2h, 51m, Morning.
 NEW MOON 10th day, 3h, 24m, Morning.
 FIRST QUARTER 18th day, 3h, 13m, Morning.
 FULL MOON 24th day, 6h, 51m, Evening.

Day of W.	Day of M.	Sun		G. app. time.		High		Memoranda.
		rises	sets	Sun's Declination.	Equation of time.	Water at St. John's, p. m.	a. m.	
		H. M.	H. M.	O	M. s.	H. M.	H. M.	
M	1	5 44	6 24	N 4 38	3 55		11 38	
T	2	5 42	6 25	5 1	3 37	0 59	0 30	Mutiny at Meerut, 1857
W	3	5 40	6 27	5 24	3 19	2 13	1 34	
Th.	4	5 38	6 28	5 47	3 1	3 47	3 1	
F	5	5 36	6 30	6 10	2 43	5 7	4 28	
S	6	5 34	6 31	6 33	2 25	5 57	5 40	
Su.	7	5 32	6 32	6 55	2 8	6 27	6 6	Low Sunday. Prince Leopold born, 1853.
M	8	5 31	6 33	7 18	1 51	7 7	6 49	
T	9	5 28	6 35	7 40	1 34	7 41	7 25	
W	10	5 26	6 36	8 2	1 17	8 11	7 56	
Th.	11	5 24	6 38	8 24	1 1	8 42	8 27	London Bridge burnt, [1759.
F	12	5 22	6 39	8 46	0 45	9 12	8 57	[1829.
S	13	5 20	6 41	9 8	0 29	9 42	9 26	Catholic Emancipation
Su.	14	5 18	6 42	9 29	0 14	10 13	9 57	2d Sunday after Easter
M	15	5 16	6 44	9 51	0 1	10 45	10 28	[1856.
T	16	5 15	6 45	10 12	0 16	11 24	11 4	Nap. III. visited Eng.
W	17	5 13	6 46	10 33	0 30		11 45	Franklin died, 1790.
Th.	18	5 11	6 48	10 54	0 44	1 8	0 36	Byron died, 1824.
F	19	5 9	6 49	11 15	0 58	2 28	1 45	[feated, 1757.
S	20	5 7	6 50	11 36	1 11	3 48	3 10	Spanish Armada de-
Su.	21	5 5	6 52	11 58	1 23	5 1	4 26	3rd Sunday after Easter
M	22	5 4	6 53	12 18	1 35	5 46	5 32	
T	23	5 2	6 54	12 37	1 47	6 22	5 57	St. George. [1857.
W	24	5 0	6 56	12 56	1 58	7 1	6 46	Dep. of Gov. Darling,
Th.	25	4 58	6 57	13 16	2 9	7 54	7 31	Prin. Alice born, 1843
F	26	4 56	6 59	13 35	2 19	8 40	8 16	[1856.
S	27	4 55	7 0	13 54	2 29	9 26	9 3	Peace ratified at Paris,
Su.	28	4 53	7 2	14 13	2 38	10 13	9 49	4th Sunday after Easter
M	29	4 51	7 3	14 32	2 47	11 10	10 36	
T	30	4 50	7 4	N 14 51	2 55	11 50	11 24	Gov. Darling arrd. 1855

Equation of time to be added to apparent time to the 14th, and to be subtracted the remainder of the month.

APRIL.—April (Latin, *Aprilis*) is so called from *aperire*, 'to open,' in allusion to the opening of the young buds of trees and flowers, and the general development of vegetation at this season.

MAY, 31 DAYS.

MOON'S PHASES.

LAST QUARTER 1st day, 3h, 59m, Evening.
 NEW MOON 9th day, 7h, 35m, Evening.
 FIRST QUARTER 17th day, 0h, 4m, Evening.
 FULL MOON 24th day, 2h, 33m, Morning.
 LAST QUARTER 31st day, 6h, 53m, Morning.

Day of W.	Day of M.	Sun		G. app. time.		High Water at St. John's,		Memoranda.
		rises at St. John's.	Sun sets	Sun's Declination.	Equa. of time. subt.	p. m.	a. m.	
		H. M.	H. M.	O	M. S.	H. M.	H. M.	
W	1	4 48	7 6	N 15 9	3 3	0 45	0 17	S. S. Philip and James
Th.	2	4 47	7 7	15 27	3 11	1 51	1 17	
F	3	4 45	7 8	15 44	3 17	3 7	2 30	Gov Darling sworn into office, 1855.
S	4	4 43	7 10	16 2	3 24	4 16	3 41	Rogation Sunday.
Su.	5	4 42	7 11	16 19	3 29	5 18	4 49	Peace proclaimed, 1856
M	6	4 40	7 12	16 36	3 34	5 45	5 31	
T	7	4 39	7 14	16 53	3 39	6 27	6 8	
W	8	4 38	7 15	17 9	3 43	7 6	6 47	
Th.	9	4 36	7 16	17 25	3 46	7 41	7 24	Ascension Day.
F	10	4 35	7 18	17 41	3 49	8 15	7 59	
S	11	4 33	7 19	17 56	3 51	8 47	8 32	
Su.	12	4 32	7 20	18 12	3 53	9 20	9 4	Sunday after Ascension
M	13	4 31	7 21	18 27	3 54	9 54	9 37	
T	14	4 29	7 23	18 41	3 54	10 30	10 12	
W	15	4 28	7 24	18 55	3 54	11 12	10 51	
Th.	16	4 27	7 25	19 9	3 53		11 35	[stituted, 1270.
F	17	4 26	7 27	19 23	3 52	0 55	0 27	18—Trial by Jury in-
S	18	4 24	7 28	19 36	3 50	2 0	1 26	Nap. I. proc'd Emperor,
Su.	19	4 23	7 29	19 49	3 48	3 14	2 39	Pentecost. [1804.
M	20	4 22	7 30	20 2	3 45	4 19	3 46	Found. stone Catholic
T	21	4 21	7 31	20 14	3 41	5 10	4 50	Cathedral laid, 1841
W	22	4 21	7 32	20 26	3 37	5 47	5 33	
Th.	23	4 19	7 33	20 38	3 32	6 42	6 14	
F	24	4 18	7 34	20 49	3 27	7 35	7 9	Q. Victoria born, 1819
S	25	4 17	7 35	21 0	3 22	8 25	8 0	Prin. Helena born 1846
Su.	26	4 16	7 36	21 10	3 15	9 13	8 48	Trinity Sunday.
M	27	4 15	7 38	21 20	3 9	10 1	9 37	
T	28	4 14	7 40	21 30	3 2	10 47	10 25	
W	29	4 13	7 41	21 40	2 54	11 34	11 10	
Th.	30	4 13	7 41	21 49	2 46		11 59	Corpus Christi.
F	31	4 12	7 42	N 21 57	2 38	0 49	0 24	Dr Chalmers died, 1847

MAY.—May (Latin, *Maius*) is so denominated from Maia, the most beautiful of the constellation Pleiades, and the fabled mother of Mercury, one of the false deities. The corresponding Jewish month was SIVAN (Ezth. viii. 9), the ninth of the civil, and third of the sacred year.

JUNE, 30 DAYS.

MOON'S PHASES.

NEW MOON 8th day, 10h, 6m, Morning.
 FIRST QUARTER 15th day, 6h, 43m, Evening.
 FULL MOON 22nd day, 10h, 50m, Morning.
 LAST QUARTER 29th day, 11h, 8m, Evening.

Day of W.	Day of M.	Sun		G. app. time.		High		Memoranda.
		rises at St. John's.	sets at St. John's.	Sun's Decli- nation.	Equa- tion of time.	Water at St. John's, p. m.	a. m.	
		H. M.	H. M.	o	M. S.	H. M.	H. M.	
S	1	4 12	7 43	N 22 6	2 29	2 12	1 42	
SU.	2	4 12	7 44	22 14	2 20	3 17	2 46	1st Sunday after Trinity
M	3	4 11	7 45	22 21	2 11	4 13	3 45	
T	4	4 10	7 45	22 28	2 1	5 3	4 43	George III. born, 1738
W	5	4 10	7 46	22 35	1 50	5 55	5 32	4—Battle of Magenta,
Th.	6	4 10	7 47	22 41	1 40	6 29	6 7	1859.
F	7	4 9	7 48	22 47	1 29	7 11	6 50	[arrived, 1857.
S	8	4 9	7 48	22 53	1 18	7 50	7 32	Governor Bannerman
SU.	9	4 9	7 49	22 58	1 6	8 28	8 8	2d Sunday after Trinity
M	10	4 8	7 50	23 2	0 55	9 5	8 47	
T	11	4 8	7 51	23 7	0 43	9 42	9 23	St. Barnabas.
W	12	4 8	7 51	23 11	0 31	10 20	10 1	11—Sir John Franklin
Th.	13	4 7	7 52	23 14	0 18	11 2	10 41	died, 1847.
F	14	4 7	7 52	23 17	0 6	11 47	11 24	
S	15	4 6	7 53	23 20	0 6	0 37		Magna Charta sig. 1215
SU.	16	4 6	7 53	23 22	0 19	1 33	1 6	3d Sunday after Trinity
M	17	4 6	7 54	23 24	0 32	2 38	2 4	J. Wesley born, 1703.
T	18	4 5	7 54	23 26	0 45	3 41	3 10	Battle Waterloo, 1815
W	19	4 6	7 55	23 27	0 58	4 50	4 15	
Th.	20	4 7	7 55	23 27	1 11	5 39	5 23	Acc. Q. Victoria, 1837
F	21	4 7	7 55	23 27	1 25	6 27	5 56	Proclamation.
S	22	4 8	7 56	23 27	1 38	7 24	6 56	Cawnpore mass. 1857.
SU.	23	4 8	7 56	23 27	1 51	8 17	7 50	4th Sunday aft. Trinity.
M	24	4 9	7 56	23 26	2 4	9 6	8 43	St. John—Midsummer
T	25	4 9	7 56	23 24	2 16	9 49	9 28	24—Battle Solferino,
W	26	4 10	7 56	23 23	2 29	10 31	10 10	1859. [1857.
Th.	27	4 10	7 56	23 20	2 42	11 12	10 52	Massacre at Cawnpore,
F	28	4 10	7 56	23 18	2 54	11 53	11 33	Cor. Q. Victoria, 1838
S	29	4 11	7 56	23 14	3 6	0 22		St. Peter.
SU.	30	4 11	7 56	N 23 11	3 18	1 18	0 55	5th Sunday aft. Trinity

Equation of time to be subtracted from apparent time to the 14th, and to be added the remainder of the month.

JUNE.—June (Latin, *Junius*), was so named from Juno, one of the fabled Goddesses of the Romans. It answers to the Jewish TAMMUZ, the tenth of their civil, and fourth of their sacred year.

JULY, 31 DAYS.

MOON'S PHASES.

NEW MOON 7th day, 10h, 40m, Evening.
 FIRST QUARTER 14th day, 11h, 15m, Evening.
 FULL MOON 21st day, 8h, 33m, Evening.
 LAST QUARTER 29th day, 4h, 19m, Evening.

Day of W.	Day of M.	Sun		G. app. time.		High Water at St. John's,		Memoranda.
		rises at St. John's.	Sun sets at St. John's.	Sun's Declination.	Equa. of time.	p. m.	a. m.	
		H. M.	H. M.	O	M. S.	H. M.	H. M.	
M	1	4 12	7 55	N 23 7	3 30	2 9	1 42	4—Declaration of independence of U.S., 1776.
T	2	4 13	7 55	23 3	3 41	3 13	2 40	
W	3	4 13	7 54	22 58	3 52	4 16	3 45	Sir H. Lawrence killed at Lucknow, 1857.
Th.	4	4 14	7 54	22 53	4 3	5 22	4 48	
F	5	4 15	7 54	22 47	4 14	5 53	5 34	6th Sunday aft. Trinity —Free Trade Act passed, 1855.
S	6	4 15	7 53	22 42	4 24	6 43	6 21	
Su.	7	4 16	7 53	22 35	4 34	7 27	7 4	Elec. cable bet. C. Ray and C. Breton, 1856
M	8	4 17	7 53	22 29	4 43	8 10	7 49	
T	9	4 18	7 52	22 21	4 52	8 52	8 31	[Futtehpoore, 1857.
W	10	4 19	7 51	22 14	5 0	9 29	9 10	
Th.	11	4 19	7 51	22 6	5 9	10 8	9 49	Havelock's victory at 7th Sunday aft. Trinity
F	12	4 21	7 50	21 58	5 16	10 48	10 29	
S	13	4 21	7 50	21 49	5 24	11 30	11 8	St. Swithin. [1789
Su.	14	4 22	7 49	21 40	5 31	11 52	11 52	
M	15	4 23	7 48	21 31	5 37	1 6	0 41	1st French Revolution, Havelock retakes Caunpore, 1857.
T	16	4 24	7 47	21 21	5 43	2 3	1 33	
W	17	4 25	7 46	21 11	5 48	3 16	2 39	8th Sunday aft. Trinity [at St. John's, 1860
Th.	18	4 26	7 45	21 1	5 53	4 32	3 53	
F	19	4 27	7 44	20 50	5 58	5 29	5 13	Arrival of Prince Wales
S	20	4 28	7 43	20 39	6 1	6 23	5 49	
Su.	21	4 29	7 42	20 28	6 5	7 22	6 53	Gibraltar taken, 1804.
M	22	4 30	7 41	20 16	6 8	8 10	7 47	
T	23	4 32	7 40	20 4	6 10	8 54	8 33	St. James.
W	24	4 33	7 39	19 51	6 11	9 33	9 15	
Th.	25	4 34	7 38	19 38	6 12	10 8	9 50	Depart. of Prince Wales for Sydney, 1860
F	26	4 35	7 37	19 25	6 13	10 42	10 25	
S	27	4 36	7 36	19 12	6 13	11 16	10 59	9th Sunday aft. Trinity
Su.	28	4 37	7 35	18 58	6 12	11 52	11 34	
M	29	4 38	7 34	18 44	6 10	0 28		French Revolu. 1830.
T	30	4 39	7 32	18 29	6 8	1 10	0 48	
W	31	4 41	7 31	N 18 15	6 5	2 5	1 35	Cook's 1st voyage, 1768

JULY.—July (Latin, *Julius*), was originally called Quintilis, being the fifth month of the Roman calendar. Mare Antony designated it *Julius*, in honor of Caius Julius Cæsar, dictator of Rome, who was born in it, and who reformed the calendar. It answers to AB, the eleventh month of the Jewish civil year, and the fifth of their sacred year.

AUGUST, 31 DAYS.

MOON'S PHASES.

NEW MOON 6th day, 9h, 21m, Morning.
 FIRST QUARTER 13th day, 3h, 43m, Morning.
 FULL MOON 20th day, 8h, 18m, Morning.
 LAST QUARTER 28th day, 9h, 51m, Morning.

Day of W.	Day of M.	Sun		G. app. time.		High Water at St. John's,		Memoranda:
		rises at St. John's.	Sun sets	Sun's Declination.	Equa. of time. add.	p. m.	a. m.	
		H. M.	H. M.	O	M. S.	H. M.	H. M.	[1834.
Th.	1	4 42	7 29	N 17 59	6 2	3 19	2 40	Negro emancipation,
F.	2	4 44	7 28	17 44	5 58	4 36	3 58	Battle of Nile, 1798
S.	3	4 45	7 27	17 29	5 54	5 37	5 15	
Su.	4	4 46	7 25	17 13	5 49	6 20	5 51	10th Sun. aft. Trinity
M.	5	4 48	7 24	16 57	5 43	7 9	6 46	
T.	6	4 49	7 22	16 40	5 36	7 53	7 31	Prin. Alfred born, 1844
W.	7	4 50	7 21	16 24	5 29	8 33	8 13	5—Atlantic Elec. Cable laid, 1858.
Th.	8	4 51	7 19	16 7	5 22	9 10	8 52	Prin. Henry of Netherlands arrived, 1845
F.	9	4 53	7 18	15 49	5 14	9 48	9 29	11th Sun. aft. Trinity
S.	10	4 54	7 16	15 32	5 5	10 27	10 6	
Su.	11	4 55	7 15	15 14	4 56	11 7	10 47	
M.	12	4 57	7 13	14 56	4 46	11 49	11 28	
T.	13	4 58	7 11	14 38	4 36	0 25		
W.	14	4 59	7 9	14 20	4 25	1 36	1 6	Printing invented 1437
Th.	15	5 1	7 8	14 1	4 14	2 57	2 14	
F.	16	5 2	7 6	13 42	4 2	4 25	3 40	Battle Tchernaya, 1855
S.	17	5 3	7 4	13 23	3 49	5 31	5 10	
Su.	18	5 5	7 3	13 4	3 37	6 22	5 50	12th Sun. aft. Trinity
M.	19	5 6	7 1	12 44	3 23	7 15	6 49	
T.	20	5 7	6 59	12 24	3 9	7 57	7 37	Canada discov. 1508.
W.	21	5 9	6 57	12 4	2 55	8 35	8 16	Founda. Stone Wea. Church laid, 1856.
Th.	22	5 10	6 55	11 44	2 40	9 9	8 52	
F.	23	5 11	6 54	11 24	2 25	9 41	9 25	
S.	24	5 13	6 52	11 3	2 9	10 11	9 56	St. Bartholomew.
Su.	25	5 14	6 50	10 43	1 53	10 40	10 26	13th Sun. aft. Trinity
M.	26	5 15	6 48	10 22	1 37	11 1	10 55	Prin. Albert born, 1819
T.	27	5 17	6 46	10 1	1 20	11 45	11 27	25—Sir Wm. Herschell died, 1822.
W.	28	5 18	6 44	9 40	1 3	0 23		
Th.	29	5 19	6 42	9 18	0 44	1 13	0 46	
F.	30	5 21	6 40	8 57	0 27	2 29	1 47	Bomarsund des. 1854.
S.	31	5 22	6 38	N 8 35	0 8	3 57	3 12	J. Bunyan died, 1688.

AUGUST.—August was originally called by the Romans *Sextilis*, or the sixth month; which was afterwards, by the senate, changed to *Augustus*, in honor of the Emperor. It corresponds to the Jewish *ELUL* (Neh. vi. 15), their twelfth civil, or sixth sacred month.

OCTOBER, 31 DAYS.

MOON'S PHASES.

NEW MOON 4th day, 3h, 24m, Morning.
 FIRST QUARTER 10th day, 6h, 36m, Evening.
 FULL MOON 16th day, 3h, 5m, Evening.
 LAST QUARTER 26th day, 6h, 22m, Evening.

Day of W.	Day of M.	Sun		G. app. time.		High Water at St. John's,		Memoranda.
		rises at St. John's.	Sun sets at St. John's.	Sun's Declination.	Equa. of time. subt.	p. m.	a. m.	
T	1	H. M. 6 4	H. M. 5 36	° O 3 16	M. s. 10 22	H. M. 5 28	H. M. 5 14	
W	2	6 5	5 33	3 40	10 41	6 12	5 47	Army encamp'd before
Th.	3	6 6	5 31	4 3	11 0	6 55	6 34	Sebastopol, 1854.
F	4	6 8	5 29	4 26	11 18	7 35	7 15	
S	5	6 9	5 27	4 49	11 36	8 15	7 54	
Su.	6	6 11	5 25	5 12	11 54	8 58	8 36	19th Sun. aft. Trinity
M	7	6 12	5 23	5 35	12 11	9 40	9 19	1st telegraph message
T	8	6 14	5 22	5 58	12 28	10 26	10 2	from C. Breton, 1856
W	9	6 15	5 20	6 21	12 44	11 14	10 50	
Th.	10	6 17	5 18	6 44	13 0		11 39	
F	11	6 18	5 16	7 7	13 15	1 11	0 37	Steam Com. estab. in
S	12	6 20	5 14	7 29	13 30	2 33	1 49	Conception Bay, 1852
Su.	13	6 21	5 12	7 52	13 44	4 0	3 17	20th Sun. aft. Trinity
M	14	6 22	5 10	8 14	13 58	5 13	4 39	W. Penn born, 1644.
T	15	6 24	5 8	8 37	14 11	5 43	5 28	
W	16	6 25	5 6	8 59	14 24	6 27	6 6	[126 guns, 1854.
Th.	17	6 27	5 4	9 21	14 36	7 3	6 46	Sebastopol bomb'd by
F	18	6 28	5 2	9 43	14 47	7 36	7 20	[Royal assent, 1855
S	19	6 30	5 0	10 5	14 58	8 8	7 51	Free Trade Act receiv'd
Su.	20	6 31	4 58	10 26	15 8	8 40	8 24	21st Sun. aft. Trinity
M	21	6 33	4 57	10 48	15 18	9 11	8 56	
T	22	6 34	4 55	11 9	15 27	9 42	9 27	Battle Trafalgar, 1805
W	23	6 36	4 53	11 30	15 35	10 15	9 58	
Th.	24	6 37	4 51	11 51	15 43	10 50	10 32	Canton bomb'd, 1857.
F	25	6 39	4 50	12 12	15 49	11 29	11 8	Battle Balaclava, 1854
S	26	6 40	4 48	12 32	15 56		11 52	1st bat. Inkerman, 1854
Su.	27	6 42	4 46	12 53	16 1	1 21	0 46	22nd Sun. aft. Trinity
M	28	6 43	4 45	13 13	16 6	2 41	1 59	
T	29	6 45	4 43	13 33	16 10	4 0	3 21	
W	30	6 46	4 41	13 53	16 13	5 6	4 35	
Th.	31	6 48	4 40	S 14 12	16 15	5 57	5 33	Hallow Eve.

OCTOBER.—October derives its name from the Latin word *octo*, "eight," indicating the place it held in the Roman calendar, and *imber*, or "shower." To the Jews it was known as BUL, signifying decay, as in the fall of the leaf (1 Kings vi: 38), or MARCHESEVAN, as it was called after the captivity.

NOVEMBER, 30 DAYS.

MOON'S PHASES.

NEW MOON 2nd day, 0h, 31m, Evening.
 FIRST QUARTER 9th day, 5h, 12m, Morning.
 FULL MOON 17th day, 9h, 34m, Morning.
 LAST QUARTER 25th day, 7h, 34m, Morning.

Day of W.	M.	Sun rises at St. John's.	Sun sets	G. app. time.		High Water at St. John's,		Memoranda.
				Sun's Declination.	Equa. of time subt.	p. m.	a. m.	
		H. M.	H. M.	O	M. S.	H. M.	H. M.	
F	1	6 49	4 38	S 14 31	16 17	6 21	6 4	All Saints.
S	2	6 51	4 36	14 51	16 18	7 6	6 44	All Souls.
Su.	3	6 53	4 35	15 9	16 18	7 53	7 29	23rd Sun. aft. Trinity
M	4	6 54	4 33	15 28	16 17	8 39	8 15	
T	5	6 56	4 32	15 46	16 15	9 26	9 3	2d bat. Inkerman, 1854
W	6	6 57	4 30	16 4	16 13	10 13	9 50	[Constitution, 1859.
Th.	7	6 59	4 29	16 22	16 10	11 3	10 37	2d Gen. Elec. under new
F	8	7 0	4 27	16 40	16 5	11 54	11 29	Milton died, 1674.
S	9	7 2	4 26	16 57	16 0	0 21		Pr. of Wales born, 1841
Su.	10	7 3	4 25	17 14	15 54	1 25	0 51	24th Sun. aft. Trinity
M	11	7 5	4 24	17 31	15 48	2 41	2 2	10—Nfld. and N. York
T	12	7 6	4 22	17 47	15 40	3 52	3 18	teleg. opened, 1856
W	13	7 8	4 21	18 3	15 32	4 58	4 26	
Th.	14	7 10	4 20	18 19	15 22	5 57	5 28	Free trade procl. 1855
F	15	7 11	4 19	18 34	15 12	6 33	6 13	[and 1852.
S	16	7 12	4 18	18 49	15 1	7 10	6 51	General Elections, 1848
Su.	17	7 14	4 16	19 4	14 49	7 45	7 29	25th Sun. aft. Trinity
M	18	7 15	4 15	19 18	14 36	8 19	8 2	[funeral, 1852.
T	19	7 17	4 14	19 32	14 23	8 52	8 35	Duke of Wellington's
W	20	7 18	4 13	19 46	14 8	9 24	9 9	
Th.	21	7 20	4 12	20 0	13 53	9 58	9 41	Princess Royal born,
F	22	7 21	4 11	20 13	13 37	10 34	10 15	1840.
S	23	7 23	4 11	20 25	13 21	11 15	10 54	St. Clement.
Su.	24	7 24	4 10	20 37	13 3	11 37	10 37	26th Sun. aft. Trinity
M	25	7 26	4 9	20 49	12 45	0 54	0 26	
T	26	7 27	4 8	21 1	12 26	1 58	1 25	Kars capitulated, 1855
W	27	7 28	4 7	21 12	12 6	3 11	2 36	
Th.	28	7 30	4 7	21 22	11 46	4 19	3 45	[opened, 1857.
F	29	7 31	4 6	21 33	11 25	5 21	4 50	St. John's Wes. Church
S	30	7 32	4 6	S 21 43	11 3	5 48	5 34	St. Andrew.

NOVEMBER.—November is so named from the Latin *novem*, "nine," it being the ninth month of the Roman calendar: It corresponds to the Jewish CHISLEU (Neh. i. 1), which signifies *chilled*, the third month of their civil, and ninth of their sacred year.

DECEMBER, 31 DAYS.

MOON'S PHASES.

NEW MOON 1st day, 10h, 44m, Evening.
 FIRST QUARTER 8th day, 11h, 37m, Evening.
 FULL MOON 17th day, 4h, 35m, Morning.
 LAST QUARTER 24th day, 6h, 19m, Evening.
 NEW MOON 31st day, 10h, 22m, Morning.

Day of W.	Day of M.	Sun		G. app. time.		High		Memoranda.
		rises at St. John's.	Sun sets	Sun's Declination.	Equa tion of time.	Water at St. John's, p. m.	a. m.	
		H. M.	H. M.	O	M. S.	H. M.	H. M.	
SU.	1	7 33	4 5	S 21 52	10 41	6 43	6 15	1st Sunday in Advent
M	2	7 35	4 5	22 1	10 18	7 36	7 10	[opened, 1843.
T	3	7 36	4 4	22 9	9 54	8 26	8 1	St. Andrew's Kirk
W	4	7 37	4 4	22 18	9 30	9 15	8 50	[proclamation, 1854
Th.	5	7 38	4 3	22 25	9 5	10 3	9 35	5th Gen. Ass. dis'd. by
F	6	7 39	4 3	22 33	8 40	10 50	10 27	Rebellion in Canada,
S	7	7 40	4 3	22 40	8 14	11 38	11 14	1837.
SU.	8	7 42	4 3	22 46	7 48	0 26		2d Sunday in Advent.
M	9	7 43	4 3	22 52	7 21	1 16	0 50	Order of Sons of Tem-
T	10	7 44	4 3	22 57	6 53	2 16	1 44	perance orgz., 1850.
W	11	7 44	4 3	23 2	6 26	3 20	2 49	Plymouth burnt by
Th.	12	7 45	4 3	23 7	5 57	4 26	3 53	French, 1377:
F	13	7 46	4 3	23 11	5 29	5 28	4 58	
S	14	7 47	4 3	23 15	5 0	5 58	5 49	Gen. Elections, 1842.
SU.	15	7 48	4 3	23 18	4 31	6 40	6 20	
M	16	7 49	4 3	23 21	4 2	7 21	7 0	C. Wesley born, 1708.
T	17	7 49	4 4	23 23	3 32	7 59	7 41	
W	18	7 50	4 4	23 25	3 2	8 37	8 18	
Th.	19	7 51	4 4	23 26	2 33	9 13	8 54	Napoleon III. pro-
F	20	7 51	4 5	23 27	2 3	9 48	9 31	claimed, 1848.
S	21	7 52	4 5	23 28	1 33	10 24	10 6	St. Thomas.
SU.	22	7 52	4 6	23 28	1 3	11 2	10 42	4th Sunday in Advent
M	23	7 53	4 6	23 27	0 33	11 44	11 23	
T	24	7 53	4 7	23 26	0 3	0 7		
W	25	7 53	4 7	23 25	0 27	0 55	0 31	CHRISTMAS DAY.
Th.	26	7 54	4 8	23 23	0 57	1 51	1 21	St. Stephen.
F	27	7 54	4 9	23 20	1 27	2 58	2 23	St. John.
S	28	7 54	4 9	23 17	1 56	4 11	3 33	Innocents' Day.
SU.	29	7 54	4 10	23 14	2 25	5 26	4 51	
M	30	7 55	4 11	23 10	2 54	6 30	5 59	
T	31	7 55	4 12	S 23 6	3 23	7 27	6 59	

Equation of time to be subtracted from apparent time to the 23rd, and added to it during the remainder of the month.

DECEMBER.—December derives its name from the Latin *decem*, "ten;" as, in the Roman year, instituted by Romulus, beginning with March, it was the tenth month.



COLONY OF NEWFOUNDLAND.

Governor, Commander-in-Chief, and Vice-Admiral—
HIS EXCELLENCY SIR ALEXANDER BANNERMAN, KNIGHT.
*Private Secretary—*Lieut. W. J. Coen, R.N.C.
*Colonial Aide-de-Camp—*Lieutenant-Colonel Edward L. Jarvis.

THE EXECUTIVE COUNCIL.

Hon. John Kent—*Colonial Secretary.*
 Hon. Laurence O'Brien—*President in the absence of the Governor.*
 Hon. Thomas Glen—*Receiver General.*
 Hon. Edmund Hanrahan—*Surveyor General.*
 Hon. James J. Rogerson.
 Hon. Edward D. Shea.
 Hon. George J. Hogsett—*Attorney General.*
*Clerk of the Council—*Hon. John Kent.

THE LEGISLATIVE COUNCIL.

Hon. Laurence O'Brien, <i>President,</i>	St. John's:
Hon. James Tobin,	do.
Hon. John Rochfort, M.D.,	do.
Hon. Philip Duggan,	do.
Hon. Edward Morris,	do.
Hon. Nicholas Stabb,	do.
Hon. Robert J. Pinsent,	do.
Hon. Patrick Kough,	do.
Hon. John Hogsett,	do.
Hon. Robert Kent,	do.

*Master-in-Chancery and Clerk—*Hon. George H. Emerson, holding, by Her Majesty's patent, the rank and precedence of an Executive Councillor; *Usher of the Black Rod—*William F. Rennie; *Door Keeper—*James Walsh; *Assistant Door Keepers and Messengers—*James Cochran and — — —.

HOUSE OF ASSEMBLY.

*District of St. John's East—*Hon. John Kent, Robert John Parsons, and John Kavanagh, Esqrs.

*District of St. John's West—*Pierce M. Barron, John Casey, and Thomas S. Dwyer, Esqrs.

*District of Harbor Grace—*John Hayward, Esq., and — — —.

*District of Carbonear—*Hon. Edmund Hanrahan.

District of Harbor Maine—Patrick Nowlan, and Charles Furey, Esqrs.

District of Port-de-Grave—John Leamon, Esq.

District of Bay-de-Verds—John Bemister, Esq.

District of Trinity—Stephen Rendell, John Winter, and Frederick B. T. Carter, Esqrs.

District of Bonavista—John H. Warren, Matthew W. Walbank, and Stephen March, Esqrs.

District of Twillingate and Fogo—Thomas Knight, and William V. Whiteway, Esqrs.

District of Ferryland—Hon. Thomas Glen, and Hon. Edward D. Shea.

District of Placentia and St. Mary's—Hon. George J. Hogsett, John W. English, Esq., and ———.

District of Burin—Ambrose Shea, Esq., and Hon. James J. Rogerson.

District of Fortune Bay—Robert Carter, Esq.

District of Burgeo and LaPoile— ———.

Clerk—John Stuart; Clerk Assistant—Richard Holden; Solicitor—John Little; Sergeant-at-Arms—Elias Rendell; Librarian— ———; Door Keeper—William Dalton; Messenger—Edward Kennedy; Under Door Keepers—Philip Brown, William Doyle; Assistant Messenger—Richard Cooney; Fireman—John Higgins.

COLONIAL SECRETARY'S OFFICE:

Colonial Secretary—Hon. John Kent; Clerks—Joseph Crowdy, and Michael A. Kent; Messenger—John Howson; Office Keeper—James Dunphy.

SURVEYOR GENERAL'S OFFICE.

Surveyor General—Hon. Edmund Hanrahan; Deputy Surveyor—Edward M. J. Delaney, C.E.; Chainman—Richard Ryan.

DEPUTY SURVEYORS IN OUTPORTS.

Northern District—Alexander O'Donovan, Carbonear; Patrick Brine, Brigus; Benjamin Sweetland, Trinity; John T. Oakley, Greenspond; William Sweetland, Bonavista; Eugene Hamilton, King's Cove.

Southern District—Thomas Mockler, Bay Bulls; Michael Kelly, Ferryland; John Simms, Trepassey; John W. English, St. Mary's and Placentia; Henry Camp, Burin and Fortune Bay; Thomas Winter, Fortune Bay.

REVENUE ESTABLISHMENT.

BOARD OF REVENUE.

President—Hon. Thomas Glen; Hon. John Kent, Hon. Laurence O'Brien, Walter Grieve, John Fox, Thomas Row, Esqrs. Secretary—George Bennett.

REVENUE DEPARTMENT.

Receiver General—Hon. Thomas Glen. Assistant Collector—George Bennett, Esq. Landing Surveyor—John Canning. Landing Waiters—Edward L. Moore, James S. Hayward. First Clerk and Warehouse Keeper—William Doutney. Second Clerk—James Winter. Third Clerk—William Gill. Fourth Clerk and Locker—William Reddin. Locker—Richard Furneaux.

Authorised Broker—Joseph R. Mullings.

OUTPORT SUB-COLLECTORS.

Fogo, James M. Winter. Greenspond, William Lang. Trinity, Robert Bayly. Carbonear, John McCarthy. Harbour Grace, Edward E. Brown; Clerk and Landing Waiter—Johnstone F. Burrows. Brigus, John C. Nuttall. Placentia, William Bradshaw. Burin, Thomas Birkett. Lamaline, Henry Benning. Harbour Briton, Thomas E. Gaden. Gaultois, Thomas Winter. LaPoile, Thomas Read.

PREVENTIVE OFFICERS.

Green Bay, (North Side,) Patrick Power. Bonavista, William Sweetland. Bay Bulls, John L. McKic. Ferryland, Luke Brown. St. Mary's, James Murphy. Trepassey, John Devereux. Grand Bank, Josiah Blackburn. Oderin, James Bradshaw. Fortune, Thomas Rogers. Burgeo, Richard Bradshaw. LaManche, Richard McGrath. Twillingate, Joseph J. Pearce. Little Placentia, Thomas Freeman. Channel (Port-aux-Basque), Marmaduke H. Clow. St. Lawrence, Hugh Vavasor. Belloram, John G. Lucas. Bay Roberts, George R. Hierlihy. Pushthrough, (Fortune Bay,) Henry Camp.—Bay-de-North, John Burfitt.

CUSTOMS' DEPARTMENT.

Comptroller—Hon. Thomas Glen. Surveyors of Shipping—James S. Hayward; Thomas E. Gaden, Harbor Briton.

Shipping Master and Emigrant Agent—William J. Henderson.

TREASURY DEPARTMENT.

Receiver General—Hon. Thomas Glen. Clerk—George F. Hayward.

FINANCIAL SECRETARY'S OFFICE.

Financial Secretary—Richard Howley, Esq., (Acting). Clerk—

BOARD OF WORKS.

For the management and superintendence of Government House, Colonial Building, Court Houses, Gaols, Custom Houses, Hospital, Lunatic Asylum, and all other Buildings and Property belonging to the Colony; Light Houses, Buoys, and Beacons erected or to be erected within the Colony and its dependencies; supervision of Commissioners of Roads, Highways, Bridges, &c., &c.

Chairman—Hon. Edmund Hanrahan; Hon. George J. Hogsett, Ambrose Shea, John Kavanagh, Hon. Thomas Glen, Thomas S. Dwyer, and Terence Hallern, Esquires.

Secretary—John Stuart. Superintendent of Public Buildings—Hon. Patrick Kough. Road Surveyors and Inspectors—Thomas Byrne, John Maher, and William Coady.

OUTPORT BOARDS OF ROAD COMMISSIONERS.

Brigus to Port-de-Grave, (both places inclusive).—John Leamon, Richard Mandeville, Rev. E. O'Keefe, John Wilcox, Philip Bennett, Thomas Butler, and John Bartlett.

Port-de-Grave, (Northern side of Northern Gut Bridge).—John Wilcox, Thomas Butler, Thomas Marten, jr., — Kenny, James Keeping.

Bay Roberts.—William S. Green, Richard Cormack, Isaac Bartlett, John MacStravic, and Robert Daw.

Harbor Grace, (from Spaniard's Bay Long Bridge to Barrett's Road).—Andrew Drysdale, William Donnelly, Hugh W. Trapnell, Thomas Higgins, Patrick Devereux, Robert Walsh, and James Crane.

Carbonear, (Electoral District).—William W. Bemister, Joseph Ryan, John Rorke, Edward Dwyer, James Forward, Michael Bulger, and William Brown.

Bay-de-Verds, (Upper Division, from Fresh Water to Northern Bay, exclusive).—Rev. John S. Peach, and Joseph H. Parsons, William Butt, Henry G. Addy, John Curtis, James P. King, John Fitzgerald.

Bay-de-Verds, (Lower Division, from Northern Bay, inclusive, to Grates Cove).—Rev. James Dove, Rev. Bernard Duffy, Rev. Oliver Rowse, and John Lewis, Thomas Neil, John Wright, Josiah Garland.

Trinity, (North Side) to Ragged Harbour.—Benjamin Sweetland, Robert Bayly, Alexander W. Bremner, Patrick Murphy.

Trinity, (South Side) from Grates Cove to Hants Harbour.—Robert Reader, John Sheehan, James L. Mews, Thomas Cooper, Jabez Tilly, William Meadows, and William March.

New Harbour.—Charles Newhook, William Miller, Joseph Pretty, and Edgar March.

Hants Harbour to Head of the Bay.—Robert Ollerhead, Michael Howley, James Wiseman, John Walker, and Rueben Bemister.

Ragged Harbour to Bird Island.—Alexander Bremner, William Ashford, William Walsh, Robert Tilly, and John Cameron.

Bonavista.—William Sweetland, John Lawrence, Peter Ward, James Saint, Patrick Kough, John G. Skelton, M.D.

King's Cove.—Rev. Matthew Scanlan, Michael Murphy, James Egan, David Candow, jr., and William Hancock, jr.

Salvage.—Henry Wills, William Dyke, jr., James Pike, William Sanson, Samuel Thurman, and Thomas Oldford.

Greenspond.—William Tough, Michael Curren, George Skelton, M.D., James Noonan, John T. Oakley, William Lang, and James Carter.

Keels and Tickle Cove.—David Candow, and Andrew Mullooney, (Tickle Cove) John Murphy, and William Penny (Keels.)

Twillingate.—John Peyton, Joseph J. Pearce, Charles Edmonds, Joseph Minty, Thomas Manuel.

Fogo.—Joseph B. Highmore, George E. Ridout, Henry Findlater, M.D., Richard Power, and Thomas Humphrey.

Tilton Harbor.—The Rev. Patrick Ward, and William Burke, John Brien, John Dwyer, and William Greene.

Moreton's Harbor and Tizzard's Harbor.—Rev. John Kingwell, William Osmond, John Forward, (Tizzard's Harbor); Henry Knight, and John Taylor, (Moreton's Harbor.)

Burnt Island, Exploits.—William Minchington, Edward Downton, Thomas Butt, William Sevin, Andrew Pearce, and Josiah Manuel.

Fortune Harbor.—James Hamilton, Michael Bryan, and Michael Byrne.

Jacket's Arm to Head of the Bay.—John Knight, J. Campbell, and John Rowsell.

Shoe Cove to Nipper's Harbor.—James Gray, John Stark, William Noble, and John Welshman.

Leading Tickle.—James Alcock, Edward Butler, and William Rowsell.

Ferryland and Fermews.—Rev. James Murphy, and Richard Cashin, William Prendergast, Simon Gregory, Patrick Finn, Michael Foley, and George Jackman.

Bay Bulls to the Goulds.—Martin Williams, Martin Driscoll, Thomas Mockler, Cornelius O'Brien, and Doctor McKie.

Placentia and St. Mary's.—Francis L. Bradshaw, and the Rev. Edward Condon, Michael J. Kelly, Thomas Freeman, and Thomas Keites.

Burin.—Edward Morris, William Hooper, Clement Benning, and Rev. John Cullen.

Lamaline.—James Healy, John Collins, and Clement Benning.

Grand Bank.—Edward Evans, Jonathan Snook, George Lake, and William Burfitt.

Harbor Breton.—Thomas E. Gaden, Samuel Howe, Philip Hubert, Clement Mallet, and James Hardy.

Belloram.—Rev. John Marshall, John Cluett, John Grandy, Patrick Rose, and Thomas Rose.

English Harbor.—T. R. Bennett, — Hall, — Fiander, T. Evans, and John Lucas.

From Garnish to Burin.—Henry Camp, Thomas Grandy, John Parsons, Joseph Grandy, George Moulton.

Gaultois.—Rev. Mr. Colley, and John Lee, Thomas Winter, H. Sheppard, and William F. Gallop.

Burgeo.—Rev. John Cunningham, and Robert H. Dawe, William Anderson, Stephen Vatcher, Richard Bradshaw.

LaPoile.—Thomas Reed, Rev. George Hooper, and Philip Clements, William Thomas, and Frederick Cox.

Channel (Port-aux-Basque).—Rev. W. W. LeGallais, Alexander Waddell, and Francis A. Read, John Gillam, John Brag, and the Rev. Joseph Gaetz.

GAOLS.

St. John's (Penitentiary).—Keeper, Richard Brace ; Turnkey, Joseph Score ; Surgeon, Charles Crowdy, M. D.

Harbour Grace.—Gaoler, David Rogers ; Surgeon, William Dow, M. D.

Trinity.—Gaoler, Charles Granger.

Ferryland.—Gaoler, Francis Geary.

Placentia.—Gaoler, Samuel Collins.

Burin.—Gaoler, John Murphy.

Bonavista.—Gaoler, Michael Fennell.

Twillingate and Fogo.—Gaoler, James Rice.

Harbor Briton.—Gaoler, John Garvey.

Brigus and Port-de-Grave.—Gaoler, James Butler.

COURT HOUSES.

St. John's.—Keeper, John R. Jeans.

Harbour Grace.—Keeper, David Rogers.

Ferryland.—Keeper, Francis Geary.

ST. JOHN'S HOSPITAL.

Medical Attendants—Hon. John Rochfort, M.D., and Thomas McKen, M.D. ; Matron—Mrs. Dooley ; Keeper—John Prowse.

LUNATIC ASYLUM, (ST. JOHN'S.)

Physician—Henry H. Stabb, M.D.

Visiting Physicians—Hon. John Rochfort, M.D., and Charles Crowdy, M.D.

DISTRICT SURGEONS.

St. John's (Eastern Ward)—Charles Crowdy, M.D., Charles H. Renouf, M.D. (*Western Ward*)—Frederick, Bunting, M.D., James N. Fraser, M.D.

Conception Bay.—William Dow, M.D.

COLONIAL BUILDING AND GROUNDS.

Keeper— — — —.

COMMISSIONERS OF STREETS.

Harbour Grace.—Robert John Pinsent, J.P., John Munn, Thomas H. Ridley.

Carbonear.—Joseph Ryan, J.P., John Rorke, John McCarthy.

COMMISSIONERS FOR ERECTION OF PUBLIC WHARF.

Catalina.—Alexander Bremner, William Walsh, John Cameron, James Murphy, John Diamond.

LIGHT HOUSES.

Keepers of Lights.—Fort Amherst, John Sheppard. Cape Spear, James Cantwell ; Assistant, Denis Cantwell. Harbor Grace Island, Edward L. Oke ; Assistant, Austin Oke. Cape Bonavista, Jeremiah White ; Assistant, Nicholas White. Cape Pine, Henry Herder ; Assistant, Samuel Austin. Harbor Grace Beach (Beacon and Light)

George Brown. Cape Race, William Hally; Assistant, George Hewett. Green Island, Patrick Houlahan; Assistant, William Houlahan. Dodding Head, Martin Sparrow; Assistant, Thomas Doran. Offer Wadham, Thomas Hennessey; Assistant, William Hennessey. Baccalieu, James Ryan; Assistant, John Ryan. Cape St. Mary's, John Reiley; Assistant, William J. Collins. General Inspector—Robert Oke.

Light Dues.—One Shilling per ton on all vessels entering any Port or Harbor of the Colony, except Coasting, Sealing or Fishing Vessels; but not to be levied more than once in any one year.—Sealing and Coasting Vessels—Sixpence per ton on registered vessels of 40 tons and upwards; Fifteen Shillings per annum on all vessels less than 40 tons.

The 19th of Vic., Cap. 5, Sec. 5, enacts—“That no greater sum than £25 sterling shall be in any year levied for Light Dues on any Steamer or Vessel entering any port of this Colony; and no Steamer plying between Europe and any port of North America, and entering any port of this Colony as a Port of Call, shall be liable to pay any Light Dues or other port charges except Pilotage.”

DESCRIPTION OF LIGHTS.

Fort Amherst Light, at the entrance of St. John's—A Light was first established at this station in 1813, and until the granting of a Legislature to this Island the expenses consequent on its maintenance were defrayed by voluntary contributions; in 1850 a new House, Lantern and Apparatus were erected. The Light burns at an elevation of 110 feet, is produced by a treble argand burner placed in the focus of an annular lens of the fourth order, and in favourable weather can be seen 12 miles. When Cape Spear is enveloped in fog a heavy piece of ordnance is also discharged at this Fort every hour during day light, to assist vessels in making the harbor.

Cape Spear Light—This Light was first exhibited on the 1st September, 1836; it is produced by seven argand burners and silvered reflectors burning at an elevation of 275 feet—it revolves, shewing a bright Light every minute, and in favourable weather can be seen 36 miles. It is situated in 47.31' N. lat. and 52.33' W. longitude.

Harbor Grace Island Light—First exhibited on the 21st November, 1837; it is a Fixed Light, has fifteen argand burners and reflectors, shewing a steady bright Light from N. to S.W. and by W. seaward, elevated above the level of the sea 151 feet, and can be seen in fair weather in rounding Cape St. Francis or crossing Conception Bay, on the intervening space between N. and S.W. and by W.; on the land side the Light is more feeble. It is situated in lat. 47.42 N., and in long. 53.05 W.

Cape Bonavista Light—Situated in lat. 48.42 N., lon. 52.59 W., is a Revolving Light, shewing alternately every 90 seconds a White and a Red Light. It is produced by sixteen argand burners and reflectors, burns at an elevation above the sea of 150 feet, and in favourable weather can be seen 30 miles. For some years the Light apparatus was in use at the Bell Rock, East coast of Scotland. By keeping this Light open with Cape Largent, it will carry you clear of the Flowers Rocks; first exhibited 11th September, 1843.

Cape Pine Light—This Tower is of iron, built by the Imperial Government in 1849-50, and first put in requisition on the 1st January, 1851. It is revolving, and shews a bright flash every thirty seconds—has 12 argand burners and reflectors—elevated above the level of the sea 314 feet—situated in lat. 46.37 N., and in lon. 53.30 W. In a favourable state of the atmosphere it can be seen 36 miles.

Harbour Grace Beach Beacon and Light—First exhibited 11th September, 1854; stands on the Point of Beach at the entrance of Harbour Grace. It is a double Light, as a distinction from Harbour Grace Island Light, one being placed above the other, preserving that appearance for six miles; exceeding this distance up to ten miles, the two Lights appear blended into one. In sailing into Harbour Grace with a fair or leading wind, bring the Beach Beacon to bear W. or W. by S., and by keeping the Light or building a little on the starboard bow it will carry you clear of the Bar, on which at low water there is not more than 8 feet of water.

Green Island Light, at the entrance of Catalina Harbour, Trinity Bay—Situated in lat. 48.30 N., lon. 53.03 W. This is a Fixed White Light, burns at an elevation of 92 feet above high water, exhibited every night from sun-set to sun-rise, and in favorable weather will be seen from E.N.E., seaward, to S.W., 12 miles. Vessels bound Northward by keeping this Light open with the North Head of Catalina until Bonavista Light opens with Cape LeJean, will give the Flowers Rocks an ample berth—or when coming from the Northward and bound for Catalina, by giving the N. Head a moderate berth, you will clear the Brandies Rocks by steering for Green Island Light.

Cape Race Light—Exhibits a Fixed White Light, from sunset to sunrise. The Light will be visible to seaward from N.E. by E. round by the S.E. and South to West. The Light is elevated 180 feet above the mean water level of the sea, and may be seen in clear weather 17 miles from a ship's deck. The tower is striped red and white vertically. It stands close to the old Beacon, which has been cut down. The Light-house is in lat. 46° 39' 12" N., lon. 53° 2' 38" W. All bearings are Magnetic. Var. 24° W. N.B.—A Toll will be levied upon all vessels benefitting by this Light.

Dodding Head, Great Burin Island, Light—This Light was put in requisition on the 3rd August, 1858, and is exhibited every night from sun-set to sun-rise. It is revolving, catoptrical, of the second order, producing a brilliant White Light every minute, with intermediate flashes at intervals of twenty seconds, burning at an elevation of 410 feet above the level of the sea, and in favourable weather can be seen 30 miles—situated in 47° 0' 0" North Latitude, 55° 0' 5" West Longitude.

Offer Wadham Island Light—Was first exhibited on the 4th October, 1858, and will continue to be lighted every night from sun-set to sun-rise. The Light is a steady, fixed lens-light, burning on a circular Brick Tower 96 feet above the level of the sea, and can be seen in a favourable state of the atmosphere 12 miles. Situated in Latitude 49.36 North—Longitude 53.46 West.

Baccalieu Island Light—This Light is exhibited every night from the going away of daylight in the evening to the return of daylight in the morning. The position and characteristics of this Light are as follows:—Baccalieu Light House is situated on the Northern end of that Island—Latitude 48.09 North, Longitude 52.50 West,—the Tower is of Brick, the Keeper's Dwelling a Square Building, detached from the Tower, painted white, with the roof red.

The Light is a Catadioptric first class Holophotal Revolving White Light, shewing a flash every twenty seconds. It is elevated 380 feet above high water, and can be seen in clear weather forty nautical miles, and a lesser distance according to the state of the atmosphere. When the Southern end of the Island bears N.N.E., the Light will not be visible when nearer the Island than eight miles.

Cape St. Mary's Light—Was put in requisition on the 20th September, 1860; it is a Revolving Catadioptric Light of the first order, producing alternately every minute a brilliant Red and a White Light, burning at an elevation of 325 feet above the level of the sea, and will be seen in a favourable state of the atmosphere 30 miles from a vessel's deck; situated in 46.49.25 N. lat., 54.8.45 lon. West. The Tower is of Brick, and on each side of which stand the dwellings of the Keeper and Assistant, the sides of which are painted White, roofs Red.

POST OFFICE DEPARTMENT.

Post Master General—John Delaney, Esq. Chief Clerk and Accountant—James Healy. Second Clerk—John Freeman. Assorters—E. Solomon, and James Furlong. Messenger—Patrick Burke.

Office hours, from 9 o'clock, a.m., to 4 p.m., Sundays excepted.

POST MASTERS.

Harbour Grace, Andrew Drysdale; Carbonear, Mary Casey, (Post Mistress); Brigus, Sarah Stentafor, (Post Mistress); Trinity, Anne Cross, (Post Mistress); Bonavista, John Lawrence; Greenspond, William Lang; Fogo, John Fitzgerald; Twillingate, Joseph J. Pearce; Bay Bulls, Martin Williams; Ferryland, John Morry; Trepassey, John Devereux; Placentia, Mary Morris, (Post Mistress); Burin, Thomas Birkett; Harbor Briton, Thomas E. Gaden; Burgeo, Richard Bradshaw.

WAY OFFICERS.

Port-de-Grave, Matthew O'Rielly; Bay Roberts, James Fitzgerald; Blackhead, John Curtis; King's Cove, Michael Murphy; New Perlican, Francis Howel; Old Perlican, William Christian; St. Mary's, Philip Breen; Oderin, Andrew Murphy; Salmonier, Patrick Hurley; Little Placentia, Alexander Burke; Harbor Maine, Patrick Brick.

POSTAL ROUTES.

Summer—Between St. John's and Portugal Cove, every day, except Sunday and Friday, by Waggon.

Between Portugal Cove, Brigus, Harbor Grace, and Carbonear, by Steamer, tri-weekly.

Overland, by Waggon, every Monday and Friday, for Carbonear, via Topsail, Kelligrews, Holyrood, Harbor Maine, Brigus, Port-de-Grave, Bay Roberts, Spaniard's Bay, and Harbor Grace, (except the Mondays on which the Halifax Steamer is due, when the Mails will then be dispatched Six Hours after her arrival in Port.

Winter—Overland Mondays and Fridays, between St. John's and Carbonear, calling at all the intermediate places.

Between Carbonear and New Perlican, (calling at Heart's Content) weekly, by Messenger.

Between Carbonear and Bay-de-Verds, weekly, by Messenger, calling at intermediate places.

Between New Perlican and Bay-de-Verds and Grates, calling at Old Perlican, weekly, by Messenger.

Between New Perlican and Trinity, weekly, by Boat.

Between Trinity and Bonavista, weekly, by Messenger.

Between Trinity and King's Cove, weekly, by Messenger.

Between Bonavista and Greenspond, fortnightly, during summer months, touching at King's Cove or Tickle Cove.

Between St. John's, Fogo and Twillingate, leaving St. John's every second Wednesday after the arrival of the Mail Packet from Halifax, or on such other days as the Post Master General may appoint.

* Between St. John's and Ferryland, weekly, by Waggon, during summer months, and fortnightly in winter.

* Between Ferryland and Trepassey, by Messenger.

* Between St. John's and Placentia, by Waggon, in six hours after the arrival of Halifax Steamer.

* Between Placentia and St. John's, by Waggon, in one hour after the arrival of Packet Boat from Burin.

* Between Salmonier and St. Mary's, by Messenger.

* Between Great and Little Placentia, by Messenger.

* Between Little Placentia, LaManche, Sound Island, Harbour Buffett, Red Island, Merasheen and Burgeo, by Boat.

* Between Great Placentia and Burin, by Boat, touching at Paradise and Oderin.

* Between Burin and Garnish, by Messenger.

* Between Garnish, Grand Bank and Fortune, by Messenger.

* Between Garnish and Harbor Briton, calling at English Harbor, by Boat.

* Between Harbor Briton, Burgeo and LaPoile, by Boat.

Newspapers posted in this country, when addressed to any place in Nova Scotia, Canada, P. E. Island, Bermuda, the United States, or elsewhere, must in all cases be prepaid, by Mail, otherwise they

cannot be forwarded, except deposited in the Government Agent's bag as merchandise.

All Correspondence addressed to the United States, must be prepaid, or it cannot be forwarded.

Routes marked thus * are fortnightly during summer, and monthly during winter months.

INLAND POSTAGE.

For Letters—Under $\frac{1}{2}$ oz. 0 0 3d.
 Under 1 oz. 0 0 6
 3d for every additional $\frac{1}{2}$ oz.

For Books—Packet not exceeding 4 oz. 0 0 3
 Above 4 oz., not exceeding 8 oz. 0 0 6
 Above 8 oz., not exceeding 1 lb. 0 1 0
 Above 1 lb., not exceeding $1\frac{1}{2}$ lb. 0 1 6
 Above $1\frac{1}{2}$ lb., not exceeding 2 lb. 0 2 0

Postage Stamps may be had at the General Post Office every day during Office hours.

Table of Single Rates of Postage to be taken upon Letters, Newspapers and Book Packets posted in Newfoundland addressed to other British Colonies, Foreign Countries, &c.

† Denotes that prepayment is voluntary, in all other cases prepayment is compulsory.

In those cases where a † is affixed, Book Packets can only be forwarded through France, and the Postage set down in this Table covers Conveyance only as far as the extreme Frontier of France.

N.B.—Newspapers and Book Packets must in all cases be prepaid.

	Letters.		Newspapers	Book Packets.	
	Not exceeding $\frac{1}{2}$ ounce stg.	Not exceeding $\frac{1}{2}$ ounce stg.		Not exceeding 2 ounces stg.	Not exceeding 4 ounces stg.
	s. d.	s. d.		s. d.	s. d.
Aden	0 11	0 11	2d	0 7	0 7
Africa, West Coast of	0 11	0 11	Letter rate	Letter rate	
† Algeria	0 8	1 4	Book rate	0 2	0 4
Ascension	0 11	0 11	1d	0 6	0 6
Australia, South	0 11	0 11	2d	0 7	0 7
Australia, Western	0 11	0 11	2d	0 7	0 7
† Austria	1 2	1 2		0 2†	0 4
Azores	0 9	1 1	2d	0 5	0 7
Bermuda		0 4	1d		0 3
British West Indies } via Bermuda }		0 4	1d		0 3
† Baden	0 9	1 6	Book rate	0 2†	0 4
† Bavaria	0 9	1 6	ditto	0 2†	0 4
† Belgium	0 9	0 9	ditto	0 2	0 4
Belize (Honduras)	0 11	0 11	1d	0 6	0 6

ent's
pre-
thly
day
News-
pre-
for-
able
e.
paid.
kets.
Not
ceed
g 4
nces
tg.
d.
7
e
4
6
7
7
4
7
3
3
4
4
4
6

	Letters.		Newspapers.	Book Packets:	
Borneo	0 11	0 11	Letter rate	Letter rate	
Bourbon	0 11	0 11	ditto	ditto	ditto
Brazil	1 5	1 5	ditto	ditto	ditto
† Bremen	1 2	1 2		0 2½	0 4
† Brunswick	1 2	1 2		0 2½	0 4
Buenos Ayres	0 11	0 11	Letter rate	Letter rate	
Canada		0 10	1d		0 3
Cape de Verds	0 9	1 1	2d	0 5	0 7
† Cape of Good Hope	0 11	0 11	1d	0 6	0 6
† Canary Islands	0 11	1 5	Book rate	0 3	0 6
Ceylon	0 11	0 11	2d	0 7	0 7
Chili	2 5	2 5	Letter rate	Letter rate	
China	0 11	0 11	ditto	ditto	ditto
† Constantinople	0 10	1 8	Book rate	0 2	0 4
Costa Rica	2 7	2 7	Letter rate	Letter rate	
Cuba	1 11	1 11	ditto	ditto	ditto
† Dardanelles	0 10	1 8	Book rate	0 2	0 4
† Denmark	1 4½	1 4½		0 2½	0 4
Ecuador	2 5	2 5	Letter rate	Letter rate	
Egypt	0 11	0 11	ditto	ditto	ditto
Falkland Islands	0 11	0 11	1d	0 6	0 6
Fernando Po	0 11	0 11	Letter rate	Letter rate	
† France	0 8	1 4	Book rate	0 2	0 4
† Frankfort	1 2	1 2		0 2½	0 4
† Galatz	0 10	1 8	Book rate	0 2	0 4
† Gallipoli	0 10	1 8	ditto	0 2	0 4
Gambia	0 11	0 11	1d	0 6	0 6
Gibraltar	0 11	0 11	1d	0 6	0 6
† Gold Coast	0 11	0 11	1d	0 6	0 6
† Greece	1 2	2 4	Book rate	0 2½	0 4
Grey Town	0 11	0 11	Letter rate	Letter rate	
Guatemala	0 11	0 11	ditto	ditto	ditto
Halifax		0 4	1d		0 3
† Hamburg	1 2	1 2		0 2½	0 4
† Hanover	1 2	1 2		0 2½	0 4
Hayti	0 11	0 11	Letter rate	Letter rate	
† Hesse	1 2	1 2		0 2½	0 4
† Hesse Homburg	1 2	1 2		0 2½	0 4
† Holland	0 9	0 9	1d	0 2½	0 4
Hong Kong	0 11	0 11	2d	0 7	0 7
India	0 11	0 11	2d	0 7	0 7
† Ionian Islands	1 6	1 6	1d	0 6	0 6
† Larnaca	1 7	1 7		0 2½	0 4
† Lauenburg	1 4	1 4		0 2½	0 4
Liberia	0 11	0 11	Letter rate	Letter rate	
† Lippe Detmold	1 2	1 2		0 2½	0 4
† Lubeck	1 2	1 2		0 2½	0 4
Madeira	0 9	1 1	2d	0 5	0 7
Malta	0 11	0 11	1d	0 6	0 6
† Mauritius	0 11	0 11	2d	0 7	0 7
† Mecklenburg	1 2	1 2		0 2½	0 4
Mexico	2 7	2 7	Letter rate	Letter rate	

	Letters.		Newspapers.	Book Packets.	
† Moldavia	1 5	1 5		0 2½	0 4
Mytelene	0 10	1 8	Book rate	0 2	0 4
Monte Video	0 11	0 11	Letter rate	letter	rate
N.Scotia (beyondHalifax)		0 6½	1d		0 3
New Brunswick		0 6½	1d		0 3
Nassau, Duchy of	1 2	1 2		0 2½	0 4
† Natal	0 11	0 11	1d	0 6	0 6
New Granada	1 5	1 5	Letter rate	letter	rate
New South Wales	0 11	0 11	2d	0 7	0 7
New Zealand	0 11	0 11	2d	0 7	0 7
† Norway	1 10	1 10		0 2½	0 4
† Oldenburg	1 2	1 2		0 2½	0 4
Prince Edward Island		0 4	1d		0 3
† Papal States	1 2	2 4	Book rate	0 2½	0 4
Penang	0 11	0 11	2d	0 7	0 7
Peru	2 5	2 5	Letter rate	letter	rate
† Poland	1 5½	1 5½		0 2½	0 4
Porto Rico	1 9	1 9	Letter rate	letter	rate
Portugal	0 9	1 1	2d	0 5	0 7
† Prussia	1 2	1 2		0 2½	0 4
Reuss	1 2	1 2		0 2½	0 4
† Rhodes	0 10	1 8	Book rate	0 2	0 4
† Russia	1 5½	1 5½		0 2½	0 4
St. Helena	0 11	0 11	1d	0 6	0 6
† Samsoun	0 10	1 8	Book rate	0 2	0 4
† Salonica	0 10	1 8	ditto	0 2	0 4
† Sardinia	0 10	1 3	ditto	0 3	0 6
† Saxe Altenburg	1 2	1 2		0 2	0 4
† Saxe Coburg Gotha	1 2	1 2		0 2½	0 4
† Saxe Meiningen	1 2	1 2		0 2½	0 4
† Saxe Weimar	1 2	1 2		0 2½	0 4
† Saxony	1 2	1 2		0 2½	0 4
† Schaumburg Lippe	1 2	1 2		0 2½	0 4
† SchwartzburgRudolstat	1 2	1 2		0 2½	0 4
† SchwartzburgSonder- hausen }	1 2	1 2		0 2½	0 4
Scutari	1 2	1 2		0 2½	0 4
Seres	1 2	1 2		0 2½	0 4
Sicilies, Two	1 2	2 4	Book rate	0 2½	0 4
Singapore	0 11	0 11	2d	0 7	0 7
† Sierre Leone	0 11	0 11	1d	0 6	0 6
† Smyrna	0 10	1 8	Book rate	0 2	0 4
† Spain	0 11	1 5	ditto	0 3	0 6
Surinam	0 11	0 11	Letter rate	letter	rate
† Sweden	1 8	1 8		0 2½	0 4
† Switzerland	0 9	1 6	Book rate	0 2½	0 4
Syria	0 10	1 8	ditto	0 2	0 4
Tasmania	0 11	0 11	2d	0 7	0 7
† Tchesme	1 7	1 7		0 2½	0 4
† Tenedos	1 7	1 7		0 2½	0 4
† Trebizond	0 10	1 8	Book rate	0 2	0 4

	Letters.		Newspapers.	Book Packets.	
† Tultcha	0 10	1 8	Book rate	0 2	0 4
Tunis	0 9	1 6	ditto	0 2	0 4
Turkey in Europe (except places specified) }	1 2	1 2		0 2	0 4
United Kingdom		0 6	Free		0 3
Do. via U. States		0 8	2d		5d 1oz.
United States		0 4	2d		0 3
† Varna	0 10	1 8	Book rate	0 2	0 4
Venezuela	1 5	1 5	Letter rate	Letter	at
Victoria	0 11	0 11	2d	0 7	0 7
Wallachia	1 7	1 7		0 2	0 4
West Indies, British	0 11	0 11	1d	0 6	0 6
West Indies, Foreign (except places specified) }	0 11	0 11	Letter rate	Letter rate	

SAVINGS' BANK.

Governors—Three members of the Legislative Council, and five members of the House of Assembly, viz. :—Hon. John Hogsett, Hon. Robert Kent, and Hon. ———, of the Council; and Hon. John Kent, Hon. the Speaker of the House of Assembly, Hon. Thomas Glen, Hon. James J. Rogerson, and Hon. George J. Hogsett, of the House of Assembly.

Directors—A. Shea, Esq., Hon. John Kent, and Hon. James J. Rogerson.

Cashier—Hon. Edward Morris.

Assets and Liabilities, 31st December, 1859, (as audited).

Assets	£192,888	16	1
Liabilities	171,926	13	0
Surplus of Assets	£20,962	3	1

The Bank is open every Monday between the Hours of 12 and 2 o'clock, for Depositors' business; and on Wednesdays for Discount business, from 11 to 3 o'clock.

RULE WITH RESPECT TO DEPOSITORS.

Deposits—All Deposits of not less than One Shilling made by any person, shall as soon as they amount to Twenty Shillings, be considered as a Deposit to the amount of the aggregate sum deposited, from the period when the last sum constituting such aggregate was deposited. The Deposits to bear interest at three per cent., but no interest will be allowed on sums less than a Pound, nor for Deposits under six months, the six months to commence from the first day of the month ensuing the receipt. The interest due on deposits on the last day of December in each year, to be carried to the credit of the Depositor, and the balance carried to a new account, and to be regarded as a deposit made on that day. The Bank is at liberty to return or reject the deposits of any person or persons, and to decline receiving any deposits exceeding One Hundred and Fifty Pounds, subject to the payment of interest thereon, when it shall be deemed

expedient so to do. And no sum exceeding £100 shall be received from any depositor, but on condition that the same shall not be withdrawn, except upon a notice ending at two months from the date thereof, or upon forfeiture of two months' interest thereon, if at the request of such Depositor the Directors consent to pay the same without requiring such notice.—*Third Rule of Newfoundland Savings' Bank.*

BRANCH BANK, HARBOR GRACE.

Cashier and Clerk—Robert J. Pinsent, Esq.

POOR COMMISSIONERS.

Joseph Shea, Esq., M.D., (Stipendiary,) Honorables John Kent, Thomas Glen, and James J. Rogerson.

COMMISSIONERS FOR REDUCTION OF PUBLIC DEBT.

Hon. J. Kent, Hon. L. O'Brien, and Hon. the Receiver General.

COMMISSIONERS OF PILOTS.

Chairman—John B. Bulley, Esq.; Hon. Laurencé O'Brien, Hon. Nicholas Stabb, and Nicholas Cusack, Esquire.

Table of Rates of Pilotage of Vessels in and out of the Harbor of St. John's.

	Currency.
On Vessels under Eighty Tons New Measurement	£2 0 0
On Vessels from Eighty Tons to One Hundred Tons New Measurement	2 10 0
On Vessels from One Hundred Tons to One Hundred and Twenty Tons New Measurement	2 15 0
On Vessels from One Hundred and Twenty Tons to One Hundred and Sixty Tons New Measurement	3 0 0
On Vessels from One Hundred and Sixty Tons to Two Hundred Tons New Measurement	3 5 0
On Vessels from Two Hundred Tons to Two Hundred and Forty Tons New Measurement	3 10 0
On Vessels from Two Hundred and Forty Tons to Two Hundred and Eighty Tons New Measurement	3 15 0
On Vessels from Two Hundred and Eighty Tons to Three Hundred Tons New Measurement	4 0 0
On Vessels from Three Hundred Tons to Three Hundred and Fifty Tons New Measurement	5 0 0
On Vessels from Three Hundred and Fifty Tons to Four Hundred Tons New Measurement	6 0 0
On Vessels from Four Hundred Tons to Five Hundred Tons New Measurement	7 0 0
On Vessels from Five Hundred Tons to Six Hundred Tons New Measurement	8 0 0
On Vessels from Six Hundred Tons to Seven Hundred Tons New Measurement	9 0 0

On
Oy
An
AU

T
nag

Her
D
D
A
and
tain

H
M.D
Mor

Jo

Su
sistan
Atton
—Jo
Hon.
and H
Chief
Chief
Crier

Bar
ordin
and Q
W. L
Willia
Rober
O. Ha

Atto
Stuc
O'Mar

Bar
Anders

On Vessels from Seven Hundred Tons to Eight Hundred Tons New Measurement £10 0 0
 Over that size—for every One Hundred Tons additional 0 10 0
 And on no one Vessel is the Pilotage to exceed 12 0 0
 All Coasting Vessels which may take Pilots to pay one half of the above Rates of Pilotage, in proportion to their tonnage.

The above Scale of Pilotage shall be payable on the Register Tonnage of all such Vessels, as ascertained before going out of the Harbor.

Her Majesty's Ships under Sixth-Rate Currency.
 £3 10 0
 Do. do. of Fourth, Fifth, and Sixth-Rate 6 10 0
 Do. do. of First, Second, and Third-Rate 8 10 0

All Merchant or Mail Steamers to pay 6d. for each Horse Power, and on no one Ship to exceed Twelve Pounds currency, to be ascertained either by Ship's Register, or if necessary, by Captain's Affidavit.

BOARD OF HEALTH.

Health Officers—Joseph Shea, M.D., St. John's. William Dow, M.D., Harbor Grace. Richard Berny, M.D., Carbonear. Francis Moran, M.D., Burin.

QUEEN'S PRINTER.

John Collier Withers, Esq.

JUDICIAL DEPARTMENT.

Supreme Court—Chief Justice—Sir Francis Brady, Knight. Assistant Judges—Honourables Philip Francis Little and Bryan Robinson. Attorney General—Honorable George J. Hogsett. Solicitor General—John Hayward, Esquire. Queen's Counsel—Hugh W. Hoyles, Hon. George H. Emerson, and Frederick B. T. Carter. Chief Clerk and Registrar Supreme and Central Circuit Courts—Charles Simms. Chief Clerk and Registrar Northern Circuit Court—John Stark. Chief Clerk and Registrar Southern Circuit Court—George Simms. Crier of the Supreme Court and Tipstaff—William Howlin.

Barristers and Attornies of the Supreme Court at St. John's, according to seniority, exclusive of the Attorney and Solicitor Generals and Queen's Counsel—Charles Simms, John S. Stevens, Robert R. W. Lilly, John Little, Thomas J. Kough, Matthew W. Walbank, William V. Whiteway, Henry A. Clift, William G. Flood, Hon. Robert J. Pinsent, Archibald Emerson, Charles H. Simms, Augustus O. Hayward, Daniel W. Prowse, Joseph I. Little.

Attornies at Law—Robert R. Holden, William B. Kielly.

Students admitted Members of the Law Society—Michael J. O'Mara, Robert Joseph Kent, William O. Wood.

Barristers and Attornies, Harbor Grace—John Hayward, Richard Anderson, Henry C. Watts.

Law Society Benchers—Frederick B. T. Carter, Treasurer; Hon. Attorney General, Solicitor General, Charles Simms, Hugh W. Hoyles, John Little, W. V. Whiteway. Secretary and Librarian—W. V. Whiteway.

Sheriffs—Central District—John V. Nugent. Northern District—Garland C. Gaden. Southern District—John Stephenson.

Masters-in-Chancery—Hon. George H. Emerson, Charles Simms, Thomas J. Kough, Hon. Robert J. Pinsent.

Vice-Admiralty Court—Judge—The Chief Justice for the time being. Registrar—Peter W. Carter. Marshal—James Bayly.

TERMS OF COURTS.

Supreme Court—Spring Term commences 20th May, to continue three weeks. Autumn Term, 20th November, and to continue three weeks, with power to the Judges to prolong the Term from day to day, not exceeding six days in all.

Sessions after Term—The first Monday in February, March, April, and July, and to continue for a period not exceeding six days.

Central Circuit Court—Spring Term, 20th April, and to continue three weeks. Autumn Term, 20th October, and to continue three weeks, with power to the presiding Judge to prolong the Term from day to day, not exceeding six days in all.

Sessions after Term—The second Monday in February, March, and July, and to continue for a period not exceeding six days.

STIPENDIARY MAGISTRATES.

St. John's—Peter W. Carter, and Thomas Bennett.

Conception Bay—Robert J. Pinsent, Harbor Grace. Joseph Ryan, Carbonear. Charles Cozens, Brigus.

Trinity Bay—Benjamin Sweetland, Trinity. Robert Reader, Old Perlican.

Bonavista—William Sweetland.

Twillingate—John Peyton.

Ferryland—John L. McKie, Bay Bulls. Peter Winsler, Ferryland.

Placentia and St. Mary's—Francis L. Bradshaw, Placentia. James Murphy, St. Mary's.

Burin—William Hooper, Burin. Josiah Blackburn, Grand Bank. Clement Benning, Lamaline.

Fortune Bay—Thomas E. Gaden, Harbor Briton.

JUSTICES OF THE PEACE.

St. John's—Robert Carter, R. N., Walter Grieve, Charles Simms, Hon. James Tobin.

Conception Bay—Thomas Hutchings, John Stark, John Munn, William S. Green, James Cormack, William Donnelly, William W. Bemister, George Forward, John Rorke, James L. Prendergast, John Wilcox, John Keeping, John Leamon, Richard Mandeville, Patrick Strapp, Richard Berney, M.D., Israel McNeil.

Trinity Bay—William Kelson, James Quintz, John Tilly, James Mews, Robert Ollerhead, Alexander Bremner, Charles Newhook, Stephen March, Philip Levesconte, John Bemister, Michael Howley.

Bonavista Bay—John T. Oakley, George Skelton, Joseph Shears, Michael Murphy, David Candow, James Saint, Peter Ward.

Twillingate and Fogo—George E. Ridout, James Fitzgerald, William Minchington, Joseph B. Highmore, James Alcock, William Stirling, M.D., Joseph J. Pearce, Charles Edmonds.

Ferryland—Alan Goodridge, Luke Brown.

Placentia and St. Mary's—George Simms, Patrick Furlong, George LeMessurier, Hon. Philip Duggan, John Walsh, Thomas E. Collett.

Burin—Clement Benning, James Moran, Edward Evans, Isaac Collins, John O'Nelle.

Fortune Bay—Thomas Read, Thomas Renouf, Robert H. Dawe, Clement Mallett, Samuel Howe, William F. Gallop, Thomas Winter.

LaPoile—Philip Sarsoleil (Petites).

St. George's Bay—Horatio H. Forrest, Elwin Alexander.

Labrador—Nathan Norman, Thomas Row Crockwell, Donald A. Smith, William B. Bendall, Sampson Daw, Henry Warren, Thomas G. Larmore, George Goodridge.

From Cape John to Bay of Islands and the Coast of Labrador—James L. Prendergast.

For the Island of Newfoundland—Major J. J. Grant, R. N. C., Commandant.

The Members of Her Majesty's Executive Council, and the Judges of the Supreme Court, are in the Commission of the Peace for the Central, Northern and Southern Districts of the Island.

CLERKS OF THE PEACE.

St. John's (for Central District)—Robert R. W. Lilly. Harbour Grace—Lewis W. Emerson. Carbonear—John Mackay. Brigus—John C. Nuttall. Trinity—Robert Bayly. Bonavista—John Lawrence. Twillingate—Aaron A. Pearce. Burin—Patrick Morris. Harbor Breton—Samuel Howe.

CORONERS.

St. John's—Joseph Shea, M. D. Harbour Grace—Robert J. Pinson. Brigus—Charles Cozens. Western Bay—John Curtis. Trinity—Benjamin Sweetland. Greenspond—Dr. Skelton. Ferryland—John Stephenson. Harbor Breton—Thomas E. Gaden. Bay Bulls—Martin Williams. South Shore, Trinity Bay—Michael Howley. Bonavista—John Lawrence. Harbor Maine—Patrick Strapp. Hermitage Bay—Thomas Winter.

POLICE.

St. John's—Inspector, Timothy Mitchell. Sergeants—William Ferguson and James Kenna.

Harbour Grace—High Constable, John Connell.

Assayer of Weights and Measures—Timothy Mitchell, St. John's.

EDUCATIONAL INSTITUTIONS.

ST. JOHN'S ACADEMY.

Directors—Church of England Board—Right Rev. Dr. Field, Thomas Bennett, Robert Carter, Hugh W. Hoyles, Hon. Judge Robinson. Head Master—Rev. George P. Harris, M. A.; Second Master, Charles F. Jagy.

Roman Catholic Board—Right Rev. Dr. Mullock, Hon. John Kent, Hon. John Rochfort, M.D., Hon. Laurence O'Brien, Hon. Judge Little. Masters—Rev. Henry Casfagnini, D.D., E. C. Mc-Lauren, M.A., Mr. Fenlon.

General Protestant Board—Patrick Tasker, Walter Grieve, John MacGregor, John B. Bulley, James O. Fraser, Peter G. Tessier. Head Master—Adam Scott.

ST. JOHN'S WESLEYAN ACADEMY.

Directors—Rev. Edmund Botterell, Hon. James J. Rogerson, Hon. Nicholas Stabb, John Bemister, Joseph Woods. Head Master—Alexander Simpson Reid.

GRAMMAR SCHOOLS.

Directors—Harbour Grace—John Munn, Thomas H. Ridley, William Donnelly, John Hayward, Hugh W. Trapnell, John Ryan, D. Greene. Master—John I. Roddick.

Carbonear—Joseph Ryan, William W. Bemister, Richard Berny, John McCarthy, Edward T. Pike, Michael Bulger, Moses Wiltshire. Master—Alexander O'Donovan, B.A.

COMMERCIAL SCHOOLS.

Commissioners—Brigus—Charles Cozens, James N. Leamon, John C. Nuttall, Richard Mandeville, Thomas Kelly. Teacher—John W. Nightingale.

Broad Cove (Bay-de-Verds).—Rev. J. S. Peach, Rev. James Dove, John Lewis, Henry G. Addy, William Butt, Jr.

Trinity—G. P. Lockyer, A. W. Bremner, Edward Egan. Teacher—Richard Ash.

Old Perlican—Rev. Thomas Gaetz, Jabez Tilly, and Stephen K. March. Teacher—William Christian.

Bonavista—William Sweetland, Peter Ward, James Saint, John Lawrence. Teacher—Samuel Rowsell.

King's Cove—Rev. M. Scanlan, Michael Murphy. Teacher—Eugene Hamilton.

Ferryland—Rev. James Murphy, Robert Carter, Luke Brown, Michael Devereux. Teacher—Michael Kelly.

Burin—Episcopal Branch, ———, Teacher; Roman Catholic, James Harney, Teacher; Wesleyan, ———, Teacher.

Harbor Briton—Thomas E. Gaden, Rev. W. K. White, Rev. Edward Colley, Clement Mallett, Samuel Howe. Teacher—J. J. Blackburn.

Twillingate—Rev. Thomas Boone, Rev. Thomas Harris, and Edwin Duder, ——— Owens, John Roberts.

COLONIAL CHURCH AND SCHOOL SOCIETY.

Patron—Her Most Gracious Majesty the Queen. Vice-Patrons—His Grace the Archbishop of Canterbury; His Grace the Archbishop of York. President—The Most Hon. the Marquis of Cholmondeley, and 50 Vice-Presidents, consisting of Peers of the United Kingdom, English and Colonial Bishops, Colonial Governors, Members of Parliament, &c., &c.

General Superintendent of B. N. America—Rev. Dr. Hellmuth.

Corresponding Committee in Newfoundland—Charles Simms, Chairman; James Bayly, Secretary; Doctor Winter, Treasurer; Edward L. Jarvis, Hugh W. Hoyles, Rev. T. M. Wood, F. B. T. Carter. J. W. Marriott, Inspector and Organizing Master.

Teachers—St. John's—Mr. C. J. Major. Infants' School—Miss Marrett, Mrs. Burke and Miss Donaldson; Mr. and Mrs. Crosby (South Side). Petty Harbor—Mr. and Mrs. Bishop. Torbay—Miss Anderson. Portugal Cove—Mr. Ward. Brigus—Mr. and Mrs. Mills. Salmon Cove—Mr. Kellegrew. Port-de-Grave—Mr. and Mrs. Maddock. Harbor Grace—Mr. and Mrs. Gardner. Spaniard's Bay—Mr. and Mrs. Earle. Bishop's Cove—Mr. Dobie. Heart's Content—Mr. Thompson. Trinity—Mr. Collis and Miss Lockyer. English Harbor—Mr. Moore. Bonavista—Mr. Lawrence. Salvage—Mr. and Mrs. Thurman. Greenspond—Mr. R. Wills and Miss Wills. Swain's Island—Mr. E. Bishop. Change Island—Mr. Jeans. Twillingate—Mr. H. Wills and sister. Belloram—Rev. J. and Mrs. Marshall. Fogo—Miss Winter.

WESLEYAN METHODIST SCHOOL AND AGENCY SOCIETY.

Committee—Rev. E. Botterell, Chairman and Treasurer; Rev. J. S. Peach, Secretary; Rev. W. E. Shenstone, Rev. T. Smith, Rev. E. Brettle, Rev. C. Lockhart, John Munn, Hon. J. J. Rogerson, John Bulley, sr., Joseph Woods, Israel M'Neil.

St. John's Day School Committee—Rev. E. Botterell, Chairman; Peter MacPherson, Treasurer; Joseph Woods, Secretary; Rev. John Waterhouse, Hon. J. J. Rogerson, Stephen Rendell, John Woods, James A. Whiteford, William Knight, George Gear, Charles R. Ayre, Edward White, Andrew Blackwood.

Teachers—St. John's— — — —. Carbonear—Joseph Peters. Blackhead—John Curtis. Old Perlican—William Christian. Port-de-Grave— — — —. Pouch Cove—Joseph Baggs. Cupids—Thomas Smith. Catalina—Benjamin Cole. Green Bay—Mrs. Gynn. Flat Island—William Harding. Sound Island—Charles Downs. Burin Bay—Mrs. Follett. Spoon Cove—Mrs. Beasely.

PRESBYTERIAN (ST. ANDREW'S) SCHOOL, ST. JOHN'S.

Committee—George G. Geddes, Gilbert Browning, John B. McLea. Teacher—James N. Neilson.

BOARDS UNDER EDUCATION ACT.

St. John's—The Ven. Archdeacon Lower, or the Senior Clergyman of the Church of England; the Rev. Edmund Botterell, or the Senior Wesleyan Minister; the Rev. Charles Pedley, the Rev. Moses Harvey, the Rev. George M. Johnson, and the Hon. Nicholas Stabb, Eugenius Harvey, F. C. K. Hepburn, William Rendell, and William H. Mare.

Harbor Grace—The Rev. Bertram Jones, Rev. Christopher Lockhart, and Richard Anderson, John Munn, William H. Ridley, John Hayward.

Carbonear—The Rev. Elias Brettle, Rev. William J. Hoyles, and William W. Bemister, John Rorke, Edward Pike, James Forward, jr., and Israel McNeil.

Bay Roberts—The Rev. Martin Blackmore, William S. Green, Rev. James C. Harvey, Rev. William E. Shenstone, and Thomas Martin, jr., John Wilcox, Isaac Bartlett.

Brigus—The Rev. Thomas Smith, Rev. William Shannon, and John Leamon, William S. Mills, Christopher Norman, James Wilcox and Jonathan Percy.

Bay-de-Verds—The Rev. John S. Peach, Rev. Oliver Rouse, Rev. James Dove, Henry G. Addy, and John Lewis.

Trinity Bay North—The Rev. Benjamin Smith, the Rev. Alfred W. Turner, and William Kelson, Benjamin Sweetland, Robert Bayly, Alexander Bremner, jr.

Trinity Bay West—The Rev. Henry Petley, and Robert Ollerhead, James Moore, Robert Rockwood, Heart's Content; Charles Newhook, New Harbor; James Wiseman, Heart's Delight; Rueben Bemister, New Perlican.

Trinity Bay South—The Rev. Charles Comben, Rev. Thomas Gaetz, Rev. O. Rouse, and James Mews, Jabez Tilly, and John Snelgrove.

Trinity Bay East—The Rev. Thomas Fox, Rev. William Netten, and Alexander Bremner, William Norman, John Daymond, and Robert Tilly, junr.

Bonavista Bay North—The Rev. William J. Milner, and John T. Oakley, George Skelton, M. D., James Noonan, William Lang, Darius Blandford, and R. Wills.

Bonavista Bay South—The Rev. Earnest A. Sall, Rev. Paul Prestwood, and William Sweetland, James Saint, John G. Skelton, William Brown, and Stephen Abbott.

Bonavista Bay West—The Rev. John Moreton, David Candow, Tickle Cove; John Sheares, Open Hall; and Samuel Coffin, William Hancock, jr., and David Candow, jr.

Fogo—The Rev. Reginald M. Johnson, and James M. Winter, George E. Ridout, Henry Simons, Joseph Highmore, Thomas Taylor, and James Rolls, (Barr'd Island Harbor).

Twillingate—The Rev. Thomas Boone, Rev. Thomas Harris, and John Peyton, Charles Edmonds, Charles Duder, and Rev. Josiah Darrell (Herring Neck).

Moreton's Harbor—The Rev. John Kingwell, Rev. Thomas Harris, Twillingate; and Robert Small, Josiah Manuel, Exploits; Job Stuckless, and William Barnes.

Ferryland—The Rev. Augustus E. C. Bayly, Robert Carter, James H. Carter, and James Carter.

Placentia—The Rev. W. F. Meek, James Butler, Thomas E. Collett, George H. Bennett, Thomas Collins, (Odcrin), James Hollett, and James Chambers.

Burin—The Rev. John S. Phinney, Rev. William Rozier, Thomas Birkett, Owen Pine, Richard Willie, George Goddard, and William Paul.

Lamaline—The Rev. A. E. Gabriel, George H. Evans, George Cake, James Pitman, George Butt, and Thomas Laskey.

Grand Bank—The Rev. John Winterbotham, Edward Evans, Josiah Blackburn, James Hickman, and Jonathan Snook.

Fortune Bay—The Rev. William K. White, Rev. E. Colley, Rev. John Marshall, Thomas E. Gaden, Samuel Howe, Arthur Drevar, Clement Mallet, and W. J. Gallop.

Burgeo—The Rev. John Cunningham, Rev. Edward Colley, Robert H. Daw, William Scott, Stephen Vatcher, and John Anderson.

LaPoile—The Rev. George Hooper, Rev. Joseph Gaetz, Thomas Reid, William Thomas, and Thomas Anderson.

Channel—The Rev. W. W. LeGallais, Rev. Joseph Gaetz, Francis Read, John Gilman, John Pike, and Edward Yenge.

Inspector of Schools under Protestant Colonial Boards—John Haddon.

ROMAN CATHOLIC SCHOOLS.

St. John's—Orphan Asylum, (Boys). Teachers—Thomas McGrath, Francis Grace; Industrial Department, Bartholomew Connors.

Harbor Grace—Free School, (Boys). Teacher— — — —.

BOARDS UNDER EDUCATION ACT.

St. John's—The Right Rev. John T. Mullock, D.D.; Honorables John Kent, Laurence O'Brien, and Patrick Kough; and Richard Howley.

Harbor Grace, Carbonear, Bay-de-Verds, and Trinity South and West—The Right Rev. Dr. Dalton; Joseph Ryan, John McCarthy, William Brown, William Dounelly, Patrick Devereux, and James L. Prendergast.

Brigus—The Rev. E. O'Keefe, Richard Mandeville, and James Cormack.

Harbor Maine—Very Rev. Kyran Walsh, V.G., and Patrick Strapp, William Holden, and Richard Woodford.

Trinity Bay North—The Right Rev. Dr. Dalton, Rev. J. Scanlan, and M. Brine, John Murphy, P. Murphy, John Egan, and John Power.

Bonavista Bay South—The Right Rev. Dr. Dalton, Rev. M. Scanlan, and William Hartery, James Connors, Michael Murphy, John Ryan, and John Murphy.

Fogo—The Right Rev. Dr. Dalton, Rev. P. Ward, and John Brine, John Burke, Patrick Burke, Patrick Dwyer, and J. Fitzgerald.

Ferryland—Rev. James Murphy, Rev. William Forristall, and Michael Devereux, J. Doyle, J. Cashin, Henry O'Neil, and Philip Jackman.

Bay Bulls—The Rev. P. Cleary, and Martin Williams, Martin Driscoll, Michael Driscoll, J. Blackler, Michael Carey (Witless Bay), and Thomas Gatherall (Balline).

Great Placentia—The Rev. E. Condon, and M. J. Kelly, F. L. Bradshaw, John Riley, jr., and Thomas Riley, sr.

Little Placentia—The Rev. Pelagius Nolan, and Thomas Freeman, Alexander Burke, John Riley, and Thomas Keits,

Placentia West—The Rev. James Walsh, and Thomas Sullivan, Timothy Connors, Daniel Ryan, and Denis Ryan.

St Mary's—The Rev. J. Ryan, and J. Walsh, Thomas Phelan, John Grace, William Burke, Michael Fagan, and James Murphy.

Trepassey—The Rev. Jeremiah O'Neill, and James Waddleton. John Tobin, James Devereux, John Neill, jr., and John Hewett.

Burin—The Rev. John Cullen, Patrick Morris, Richard Marshall, John Power, Matthew Marshall, Edward Morris, and William Fitzpatrick.

Fortune Bay—The Rev. E. Brennan, Rev. John Cullen, Rev. J. Fripps, and P. Burke, W. Burke, P. Burke, jr., T. Kinshela, and T. Hearn.

Inspector of Schools under Roman Catholic Colonial Boards—Michael J. Kelly.

ECCLESIASTICAL DEPARTMENT.

CHURCH OF ENGLAND.

The Right Reverend EDWARD FEILD, D.D., Lord Bishop of Newfoundland. The Venerable Henry Martyn Lower, M.A., Archdeacon and Ecclesiastical Commissary.

Deanery of Avalon—Rev. Aug. E. C. Bayly, Ferryland. Rev. George M. Johnson, Petty Harbor. Rev. Benjamin Fleet, Fox Trap. Rev. Algernon Gifford, Portugal Cove. Ven. H. M. Lower, M.A., Rev. J. F. Phelps, St. John's; Rev. John Pearson, South Side; Rev. Thomas M. Wood, (Rural Dean) St. Thomas's. Rev. C. Palairat, M.A., Topsail.

Deanery of Conception Bay—Rev. M. Blackmore, (Rural Dean) Bay Roberts. Rev. James C. Harvey, Port-de-Grave. Rev. W. J. Hoyles, Carbonear. Rev. Bertram Jones, Harbor Grace. Rev. Oliver Rouse, Bay-de-Verd. Rev. William Shannon, Brigus. Rev. Julian Moreton, Island Cove.

Deanery of Trinity Bay—Rev. Henry Petley, M.A., Heart's Content. Rev. W. Kirby, King's Cove. Rev. W. J. Milner, Greenspond. Rev. William Netten, Catalina. Rev. Earnest A. Sall, Bonavista. Rev. Benjamin Smith, (Rural Dean) Trinity.

Deanery of Notre Dame Bay—Rev. Thomas Boone, (Rural Dean) Twillingate. Rev. Josiah Darrell, Herring Neck. Rev. R. M. Johnson, Fogo. Rev. John Kingwell, jr., Moreton's Harbor.

Deanery of Placentia Bay—Rev. William Rozier, Burin. Rev. William F. Meek, Harbor Buffett. Rev. A. E. Gabriel, Lamaline.

Deanery of Fortune Bay—Rev. George H. Hooper, LaPoile. Rev. Henry Lind, St. George's Bay. Rev. Edward Colley, Hermitage Bay. Rev. John Cunningham, Burgeo. Rev. W. W. LeGallais, Channel. Rev. John Marshall, Belleoram. Rev. William K. White, (Rural Dean) Harbor Briton.

Labrador—Rev. E. Botwood, Forteau. Rev. George Hutchinson, M.A., Battle Harbor.

Theological Institution—Principal—Ven. H. M. Lower, M.A. Vice-Principal—Rev. Joseph F. Phelps. Students—Charles Edwards, A. Hatherly, George Gardner, John Noel, W. Shears.

Newfoundland Church Society—Patron—His Excellency the Govern-
 or. President—The Right Rev. the Lord Bishop of Newfound-
 land. Vice-Presidents—The Rural Deans. Treasurer—F. C. K.
 Hepburn. Secretary—Rev. John Pearson. Committee—Eugenius
 Harvey, John Tunbridge, F. B. T. Carter, J. C. Withers, C. Crowdy,
 M.D., W. Rendell, H. W. Hoyles, J. B. Wood, K. McLea, jr., John
 Winter, M. D., John H. Warren, Henry K. Dickinson, T. Bennett,
 J.P., George J. Hayward, Hon. Judge Robinson.

ROMAN CATHOLIC CHURCH.

Diocese of St. John's—Right Rev. JOHN THOMAS MULLOCK, D.D.,
 Lord Bishop of St. John's.

Very Rev. P. Cleary, Dean.

Very Rev. K. Walsh, Vicar General.

Very Rev. A. Belanger, Vicar General.

St. John's Cathedral—Right Rev. J. T. Mullock, D. D., Rev.
 Jeremiah O'Donnell, Rev. John Vereker, Rev. Thomas Byrne.

St. Patrick's, River Head—Rev. Michael Walsh, Rev. Thomas
 Cody.

St. John's College—Very Rev. Henry Carfagnini, D.D., O.S.F.,
 Rev. Richard O'Donnell.

Portugal Cove—Rev. Thomas O'Connor.

Torbay—Rev. Edward Troy.

Harbor Maine—Very Rev. Kyran Walsh, V.G.

Witless Bay—Very Rev. Dean Cleary, Rev. Richard Dunphy.

Ferryland—Rev. James Murphy.

Fermeuse—Rev. William Forristall.

Trepassey—Rev. Jeremiah O'Neill.

St. Mary's—Rev. John Ryan, Rev. M. Hannebury.

Placentia—Rev. E. Condon.

Little Placentia—Rev. Pelagius Nowlan.

Oliver's Cove, St. Kyran's—Rev. James Walsh.

Burin—Rev. John Cullen, Rev. M. Berny.

Harbor Briton—Rev. E. Brennan.

St. Lawrence—Rev. J. Fripps.

Brigus—Rev. E. O'Keefe.

St. George's Bay—Very Rev. Alexander Belanger, V.G.

French Shore—Served annually by two Priests from France.

College of St. Bonaventure, St. John's—Very Rev. H. Carfagnini,
 O.S.F., D.D., President; Rev. Richard O'Donnell, Director and
 Professor; E. C. Maclauren, M.A., Professor of Classics, Science,
 and Belles Lettres; Mr. Fenlon, Professor of Science.

Convents in the Diocese of St. John's, 4—St. John's Presentation
 Convents, 2; Sisters of Mercy, 2.

Presentation Convents in Harbor Maine, St. Mary's, Witless
 Bay, Ferryland, Fermeuse.

St. Michael's Female Orphanage, Belveder, St. John's—Or-
 phans, 51.

Diocese of Harbor Grace—The Right Rev. JOHN DALTON, D.D.,
Lord Bishop of Harbor Grace; Rev. J. Walsh.

Carbonear—Rev. John O'Connor.

Northern Bay—Very Rev. Bernard Duffy, V.G.

King's Cove—Rev. Matthew Scanlan.

Bonavista—Rev. J. Brown.

Tilton Harbor—Rev. Patrick Ward.

Bay-de-Verds—Rev. Mr. Mackay.

Presentation Convents in the Diocese of Harbor Grace, two; one
at Harbor Grace and one at Carbonear.

CONGREGATIONAL CHURCH.

The Rev. CHARLES PEDLEY, Queen's-road Chapel, St. John's.

WESLEYAN METHODIST CHURCH.

The Rev. EDMUND BOTTERELL, Chairman of the District. The
Rev. John S. Peach, Financial Secretary.

St. John's—Rev. Edmund Botterell, Rev. John Waterhouse; Rev.
Adam Nightingale, Supernumerary.

Harbour Grace—Rev. Christopher Lockhart.

Carbonear—Rev. Elias Brettle, Rev. William S. Shenstone.

Brigus—Rev. Thomas Smith.

Port-de-Grave—Rev. William E. Shenstone.

Blackhead—Rev. John S. Peach.

Island Cove—Rev. James Dove.

Old Perlican—Rev. _____.

Hant's Harbour—Rev. Charles Comben.

Trinity—Rev. Alfred W. Turner.

Bonavista—Rev. Paul Prestwood, Rev. Thomas Fox.

Twillingate—Rev. Thomas Harris.

Burin—Rev. John S. Phinney.

Grand Bank—Rev. John Winterbotham.

Missions of Conference.

Labrador—Supplied during Summer by Rev. Thomas Fox.

Petites and Western Shore—Rev. Joseph Gaetz.

Exploits and Little Bay Islands—Rev. James A. Duke.

CHURCH OF SCOTLAND.

The Rev. DONALD McRAE, St. Andrew's Church, St. John's.

FREE PRESBYTERIAN CHURCH.

The Rev. MOSES HARVEY, St. John's.

The Rev. ALEXANDER ROSS, Harbor Grace.

LAYMEN LICENSED TO CELEBRATE MARRIAGE.

Charles Harris, Muddy Hole, George Goodridge, Labrador.

ST.

H

side

Step

Tho

Bull

Chap

Mud

Fras

Jam

Ney

Clerg

Ja

riott,

Harv

Hoyl

Seat

G. E

Re

Dona

Presi

tary.

St.

John

and

Dick

McL

Di

Presi

Job

Pins

Dic

Ho

Di

ring,

Ro

B. D

Dis

Ho

ST. JOHN'S AND NEWFOUNDLAND AUXILIARY BIBLE SOCIETY.

His Excellency the Governor, Patron. Hon. Nicholas Stabb, President. Hugh W. Hoyles, William Freeman, Patrick Tasker, and Stephen Rendell, Vice-Presidents. Robert Brown, Treasurer.—Thomas McConnan, Depository. Rev. Moses Harvey and John B. Bulley, Secretaries. Committee—Rev. Edmund Botterell, Rev. Charles Pedley, Rev. Donald McRae, Rev. John Waterhouse, N. Mudge, J. Winter, W. Boyd, J. S. Rutherford, J. MacGregor, J. O. Fraser, J. Murray, J. Seaton, J. Pitts, A. Whiteford, R. L. Nuir, James Bayly, Joseph Woods, Peter G. Tessier, E. L. Jarvis, Richard Neyle, John Woods, J. B. McLea, G. Browning, R. Biace, and all Clergymen being members of the Society.

RELIGIOUS TRACT AND BOOK SOCIETY.

James Bayly, President. Robert Brown, Treasurer. J. W. Marriott, Secretary. Committee—Rev. Donald McRae, Rev. Moses Harvey, Rev. Charles Pedley, Rev. Edmund Botterell, Hugh W. Hoyles, John B. Bulley, Stephen Rendell, John MacGregor, James Seaton, James S. Rutherford, James A. Whiteford, D. W. Prowse, G. Ehlers, Hon. J. J. Rogerson. Depository—Mrs. Treunar.

YOUNG MEN'S CHRISTIAN ASSOCIATION.

Rev. Moses Harvey, President. Rev. Charles Pedley, Rev. Donald McRae, and all Ministers members of the Society, Vice-Presidents. Robert Blackwood, Treasurer. John E. Peters, Secretary. David Patterson, Librarian.

CHAMBER OF COMMERCE.

St. John's—Walter Grieve, President. Stephen Rendell and John MacGregor, Vice-Presidents. Hon. Nicholas Stabb, Treasurer and Secretary. Hon. L. O'Brien, F. C. K. Hepburn, Henry K. Dickinson, Patrick Tasker, Peter G. Tessier, John Fox, Kenneth McLea, John Bowring, Gustav Ehlers.

BANKS.

UNION BANK OF NEWFOUNDLAND.

Directors—Walter Grieve, President. Hon. L. O'Brien, Vice-President. John MacGregor, Henry K. Dickinson, John Fox.

John W. Smith, Manager. Randal Green, Teller. Charles S. Pinsent and John Noon, Clerks. Hugh W. Hoyles, Q.C., Solicitor.

Discount Days—Mondays and Thursdays, from 4 past 12 o'clock.

Hours of Business—From 10 a.m., to 3 p.m.

COMMERCIAL BANK OF NEWFOUNDLAND.

Directors—Francis C. K. Hepburn, Stephen Rendell, John Bowring, Gustav Ehlers, Kenneth McLea.

Robert Brown, Manager. Peter P. LeMessurier, Teller. William B. Dryer, Clerk and Messenger. F. B. T. Carter, Q.C., Solicitor.

Discount Days—Tuesdays and Fridays, from 12 to 1 o'clock.

Hours of Business—From 10 a.m., to 3 p.m.

NOTARIES PUBLIC.

St. John's—Charles Simms, Hon. George H. Emerson, Hugh W. Hoyles, Robert Prowse, George F. Bown, Henry Devereux, Frederick B. T. Carter, William J. Ward, Robert R. W. Lilly, Hon. Edward Morris, Hon. George J. Hogsett, William H. Mare, John Little, Samuel G. Archibald, Matthew W. Walbank, Thomas J. Kough, William V. Whiteway, John B. Cormack, Hon. Nicholas Stabb, Matthew H. Warren, Charles S. Warren, Hon. Robert J. Pinsent, Alexander Stuart, Richard B. Holden.

Outports—Harbour Grace—John Hayward, Andrew Drysdale, Henry A. Clift, Lewis W. Emerson. Carbonear—Henry C. Watts. Twillingate—John Peyton. Burin—William Hooper. Brigus—William S. Mills. Bay Roberts—George W. R. Hierlihy. Laminé—Clement Benning.

FOREIGN CONSULATES.

United States of America—William S. H. Newman, Consul for Newfoundland.

Kingdom of Spain—Don Hipolito de Uriarte, Consul for Newfoundland; Vice-Consuls—St. John's—Charles F. Ancell; Harbour Grace—T. Harrison Ridley; Consular Agents—Twillingate—John Peyton; Greenspond—James L. Noonan; Cape Charles—Israel McNeil; Dead Island—Nicholas Payne; Long Island—William Junott.

Empire of Brazil—Stephen Rendell, Vice-Consul for Newfoundland. Commercial Agents—John Munn, Harbour Grace; William Kelson, Trinity.

Kingdom of Portugal—Charles F. Bennett, Consul General for Newfoundland. Vice-Consuls—Charles T. Bennett, St. John's; John Munn, Harbour Grace; William Hooper, Burin; R. F. Sweetland, Placentia; Charles Edmonds, Twillingate.

Kingdom of Prussia—Robert Prowse, Consul for St. John's; D. W. Prowse, Consular Agent.

Hamburgh—Robert Prowse, Consul; D. W. Prowse, Consular Agent.

Empire of France—J. C. Toussaint, Vice-Consul for Newfoundland

MILITARY ESTABLISHMENT.

Officer Commanding the Troops—Major J. J. Grant, Royal Newfoundland Companies. Garrison Staff—Acting Staff Officer, Lieut. and Adjutant, A. S. Quill, RNC. Acting Garrison Chaplain—Rev. T. M. Wood. Garrison Staff Clerk—Sergeant M. Gilligan.

Military Store Department—Assistant Military Store-keeper and Acting Barrack Master, J. Tunbridge. Established Clerk, N. Hammer. Barrack Sergeants, H. Hawkins, P. O'Connor. Store-houseman, F. Scott. Warder, W. Hammond. Wharfinger, (Queen's Wharf,) W. Francis.* Office Messenger, A. Devanna.

* See Wharfinger's printed Instructions posted at the Gate for general information.

Commissariat Department—Deputy Assistant Commissary General, J. H. Tubby. Temporary Clerk, C. P. Withell. Assistant Store-keeper and Issuer, J. Devlin. Office Messenger, ———

Royal Engineer Department—Commanding Royal Engineers, Capt. T. A. L. Murray. Attached to Engineer Office and Department—Clerk of Works, Wm. Pearse. Engineer Clerk, (temporary) L. Hanmer. Office Messenger, G. Clarke.

Royal Newfoundland Companies—Major J. J. Grant. Captains, W. S. Bold, Thomas Hanrahan. Lieutenants, A. S. Quill, D. E. Daly, W. J. Coen. Ensigns, W. Gilmor, William Cavanagh. Adjutant and Acting Quarter Master, A. S. Quill, Lieut. Acting Pay Master, W. J. Coen, Lieut. Assistant Surgeon (Regimental Hospital), Leslie O. Patterson, in Medical charge. School Master, 2nd Class, W. Gell; School Mistress, Mrs. Gell.

Posts and Works—St. John's, (North Side)—Fort Townshend, Fort William; Signal Hill, Storehouses, Magazine and Armoury; Queen's, Waldegrave, Chain Rock, Wallace's, and Quidi Vidi Batteries; Military Store Yard, Commissariat House, Office, Fuel Yard and Garrison Bakery, Queen's Wharf, Commissariat and Military Store Houses there inclusive; Engineer House, Office, Workshops and Yard. South Side—Fort Amherst and Magazine.

N.B.—Morning, Noon, and Evening, Guns are fired daily from Queen's Battery, as also an Alarm Gun on occasion of Fire in Town; Fort Amherst fires Fog Guns every hour, when necessary, as also two Guns for Vessels when in Distress at Sea.

NOMINAL LIST OF OFFICERS OF THE VOLUNTEER RIFLE COMPANIES IN NEWFOUNDLAND.

ST. JOHN'S.

No. 1 Company—Captain, Patrick Tasker. Lieutenant, John Fox. Ensign, Henry K. Dickinson. Surgeon, James N. Fraser, M. D. Secretary, Edward L. Moore.

No. 2 Company—Captain, Gustav Ehlers. Lieutenant, Matthew W. Walbank. Ensign, N. Shannon. Surgeon, W. C. Simms, M. D.

No. 3 Company—Captain, James S. Clift. Lieutenant, Robert Thorburn. Ensign, Robert Dicks.

No. 4 Company—Captain, Henry Renouf. Lieutenant, Michael E. Phelan. Ensign, John T. Barron.

No. 5. Company—Captain, John Kavanagh. Lieutenant, Hon. G. J. Hogsett. Ensign, Robert J. Kent.

DISTRICT OF CONCEPTION BAY.

No. 1 Harbor Grace Volunteer Rifle Company.—Captain, John Hayward. Lieutenant, Henry T. Moore. Ensign, Robert Munn.

NAVAL.

Commander-in-Chief on the West India and North American Station—Rear Admiral Sir Alexander Milne, K.C.B.

Royal Naval Dock Yard, South Side, St. John's.

REVENUE AND EXPENDITURE

Of the Colony of Newfoundland, for the Year ending 31st Dec., 1859

REVENUE.		
Customs Revenue	£112,689 19 9
Light Dues	5,946 17 10
Rents of Crown Lands, &c	939 19 0
License Fund, Fines and Forfeitures, ..		1,001 19 6
Fees from Public Officers	556 14 3
North American Clergy Estimate	300 0 0
Raised under Consolidated Stock Act ..		8,212 10 0
Premium on Consolidated Stock	520 19 7
Postal Revenue	500 0 6
Patents	10 0 0
Duties on Spirits distilled in the Island	913 2 0
Duties under Copyright Act	1 3 1
Board of Works—Hospital Act	208 8 2
Board of Trade—Cape Race Light House	453 2 4
Harbor Grace Streets—21st Vic, Cap 3 ..		1,259 16 6
Miscellaneous	220 2 7
	Total	£133,734 15 1

EXPENDITURE.		
Civil Department	6,396 7 9
Customs Department	6,342 6 5
Judicial Department—Salaries and Contingencies	6,648 1 3
Police and Magistracy	6,167 1 11
Ecclesiastical Establishment	300 0 0
Legislative Department	7,018 19 4
Pensions and Gratuities	2,167 0 0
Printing and Stationery	1,137 2 9
Gaol Expenses	1,015 12 1
Coroners	258 8 3
Repairs of Court Houses and Gaols	797 9 6
Relief of the Poor	12,701 4 2
Postages and Incidentals	18 9 4
Roads and Bridges	14,999 0 0
Light Houses	9,303 3 6
Fuel and Light	911 0 1
Education	14,579 12 0
Interest on Loans	9,632 11 2
Public Institutions	650 0 0
St. John's Rebuilding Act	1,164 1 0
Registration and Election Expenses	758 1 4
Crown Lands Act	742 6 5
Loans Paid off	10,025 0 0
Sinking Fund	3,163 11 1
Ferries and Packets	303 17 6
Shipwrecked Crews	500 6 4
Steam Communication	10,097 18 10
Public Buildings	3,126 18 8
Breakwaters and Public Wharves	342 5 5
Postal Act	2,963 16 10

359
9
10
0
6
3
0
0
7
6
0
0
2
0
3
1
3
2
2
4
3
6
2
7
5
1

New Gaol Erection	2,269	16	1
Pumps, Tanks, &c	397	17	1
Protection of Fisheries	767	3	4
St. John's Hospital and Repairs	2,203	15	6
Insurance on Public Buildings	263	10	1
Jury Act	15	8	4
Harbour Grace Streets	1,259	16	6
Emigration	60	13	4
Addresses of Assembly	802	5	11
Carbonear Streets	43	6	8
General Survey of Island	185	2	1
Placentia Gut	250	0	0
Quidi Vidi Gut	504	4	6
Miscellaneous	2,055	7	7
Total		£145,310	9	11

NEWFOUNDLAND TARIFF OF DUTIES.

7
6
1
1
1
0
9
9
0
0
2
2
1
8
3
9
6
4
2
9
4
9
4
0
0
3
6
0
1
2
0
0
1
0
1
4
6
5
0
0
1
1
7
6
6
4
8
10
8
8
5
5
6
10

Articles.	Duty in stg.
	£ s d
Ale, Porter, Cider, and Perry, viz :—	
In Bottles, the Dozen, of 2 Gallons	0 0 9
In Casks—the Gallon	0 0 3
Bacon, Hams, Smoked Beef and Sausages—the Cwt	0 7 6
Beef, salted and cured—the brl. of 200 lbs	0 2 0
Biscuit or Bread—the cwt	0 0 3
Butter—the cwt	0 3 0
Cheese—the cwt	0 5 0
Chocolate and Cocoa—the lb	0 0 1
Cigars—the M	0 10 0
Coffee—the lb	0 0 1
Feathers and Feather Beds—the lb	0 0 1
Flour—the brl	0 1 6
Fruits, dried—the lb	0 0 1
Fruits, other descriptions—the £100	10 0 0
Molasses—the gallon	0 0 2½
Oatmeal and Indian Meal—the brl	0 0 6
Pork—the barrel of 200 lbs	0 3 0
Salt—the ton	0 0 6
Shooks and Staves, manufactured or dressed—the £100	10 0 0
Spirits—Brandy, Gin, Whiskey, or other Spirits not herein defined or enumerated, not exceeding the strength of proof by Sykes's Hydrometer, and so in proportion for any greater strength than the strength of proof—the gallon	0 4 0
Rum ditto ditto—the gallon	0 1 6
Cordials, Shrub, and other Spirits being sweetened or mixed so that the degree of strength cannot be ascertained as aforesaid—the gallon	0 2 0
Sugar—Loaf and refined—the cwt	0 12 0
Unrefined	0 7 6
Bastard	0 7 6

Tea—the lb	0	0	4
Tobacco, manufactured and leaf—the lb	0	0	3
Tobacco Stems—the cwt	0	2	0
Vinegar—the gallon	0	0	3
Wines of all kinds—In Bottles (except Claret)—the gal	0	5	0
Wines in wood and other vessels, not being bottles, viz :—Port, Madeira, Hock, Burgundy—the gallon	0	4	0
Sherry—12½ per cent. ad valorem—and the gallon	0	2	6
Claret—In wood or bottles—the gallon	0	2	0
All other Wines—the gallon	0	2	0
Anchors, Barley and Oats, Canvass, Cordage and Cables, Copper and Composition Metal for Ships, viz :—Sheathing, Bar, Bolt, and Nails; Corks and Corkwood, Fishing Tackle, Indian Corn; Iron, viz., Bar, Bolt, Sheathing and Sheet, Wrought Nails; Medicines. Oakum, Peas, Pitch, Tar, Turpentine and Rosin, Poultry and Fresh Meat—the £100	5	0	0
Goods, Wares and Merchandize not otherwise enu- merated, described, or charged with duty in this Act, and not otherwise exempt—the £100	10	0	0
Fish—salted, dried, or pickled, for every cwt imported	0	5	0

LOCAL DISTILLATION.

Rum, not exceeding the strength of proof by Sykes's Hydrometer, and so in proportion for any greater strength than the strength of proof—the gallon	0	0	8
Brandy, Gin, or other Spirits not herein defined or enumerated, not exceeding the strength of proof by Sykes's Hydrometer, and so in proportion for any greater strength than the strength of proof— the gallon	0	1	0

TABLE OF EXEMPTIONS.

Printing Presses, Printing Paper, (Royal and Demy) Types, and all other Printing Materials
Printed Books, Pamphlets, Maps and Charts
Coin and Bullion
Hemp, Flax, Tow
Plants, Trees and Shrubs
Specimens illustrative of Natural History
Works of Art, viz :—Engravings, Paintings, Statuary, and all arti- cles imported for religious purposes and not intended for sale
Manures of all kinds
Arms, Clothing, and Provisions for Her Majesty's Land and Sea Forces
Passengers' Baggage, Household Furniture, and Working Tools and Implements used and in the use of Persons arriving in this Island
Refuse of Rice
Seeds for Agricultural purposes
Vegetables of all sorts
Animals of all kinds
Articles of any description imported for the use of the Governor
Donations of Clothing specially imported for distribution gratuit- ously by any charitable Society
Cotton Yarn, Pig Iron, Coke.

TABLE OF EXEMPTIONS UNDER TREATY WITH THE UNITED STATES.

- Grain, Flour and Breadstuffs, of all kinds
- Animals of all kinds
- Fresh, Smoked, and Salted Meats
- Cotton, Wool, Seeds and Vegetables
- Undried Fruits, Dried Fruits
- Fish of all kinds
- Products of Fish and all other creatures living in the water
- Poultry, Eggs
- Hides, Furs, Skins or Tails—undressed
- Stone or Marble, in its crude or unwrought state
- Slate
- Butter, Cheese, Tallow, Lard
- Horns, Manures
- Ores of Metals of all kinds; Coal
- Pitch, Tar, Turpentine; Ashes
- Timber and Lumber, of all kinds, round, hewed and sawed—manufactured in whole or in part
- Firewood, Plants, Shrubs and Trees
- Pelts, Wool; Fish Oil
- Rice, Broom Corn and Bark
- Gypsum—ground or unground
- Hewn or wrought or unwrought Burr or Grindstones
- Dye Stuffs
- Flax, Hemp, Tow—unmanufactured
- Unmanufactured Tobacco; Rags

—So long as the said Treaty between Great Britain and the United States of America, in the recited Act mentioned, shall remain in force in this Island; and similar Articles, being the growth, produce, and manufacture of the United Kingdom, British North American Provinces, or of the Island of Prince Edward, or the Channel Islands, shall be admitted Duty Free, notwithstanding any law to the contrary.

All Yachts sailing under Warrant of the Lords of the Admiralty, or belonging to the Royal Yacht Club, shall be exempted, on view of the said Warrant, from payment of all Local Duties whatsoever.

SHIPS OWNED AND REGISTERED IN NEWFOUNDLAND.

Number of Vessels	1,342
Tonnage	84,050

VALUE OF IMPORTS AND EXPORTS IN '55, '56, '57, '58, '59.

	1855	1856	1857 .	1858	1859
Imports	£1,152,804	£1,271,604	£1,418,432	£1,172,862	£1,324,136
Exports	1,142,212	1,338,797	1,651,171	1,318,636	1,357,113

A CONSOLIDATED ACCOUNT

Of Dutiable Goods imported in the Year ended 31st December, 1859, showing the aggregate Quantities of the various Articles, and amount of Duty collected thereon.

ARTICLES IMPORTED.	QUANTITY.		DUTY.
Ale, Porter, Cider, and Perry, viz :			
In bottles	3214	doz.	£120 10 6
In casks	101134	gals.	1264 3 6
Animal, viz. :			
Sheep, Swine, and Calves			
Apples	3½	brls.	0 4 11
Bacon, Hams, Tongues, Smoked			
Beef and Sausages	280 2 7	cwt.	108 11 0
Beef (salted and cured)	24	brls.	2 8 0
Biscuit	81384½	cwt.	1017 6 2
Butter	4254 3 0	"	638 4 4
Cheese	18 1 21	"	4 12 2
Chocolate and Cocoa	21454	lb.	80 7 10
Cigars	533375		260 13 9
Coals	66	tons	3 6 0
Coffee	236211	lbs.	984 4 3
Feathers	126087	"	525 7 3
Flour	4774½	brls.	358 1 9
Fruit (dried)	119106	lbs.	496 5 6
Lumber	1100	feet	0 2 9
Molasses	840032	gals.	8750 6 8
Oatmeal and Indian Meal	189½	brls.	4 14 9
Pork	677	"	101 11 0
Salt	38161	tons	954 0 6
Spirits, viz. :			
Brandy, Gin and Cordials	28791½	gals.	5758 5 0
Rum	160498½	"	12037 7 2
Sugar, viz. :—Refined	2007 1 22	cwt.	1204 9 3
Unrefined	19380 3 27	"	7267 17 5
Tea	695915	lbs.	11598 11 8
Tobacco (manufactured)	475699	"	5946 4 9
Vinegar	5149	gals.	64 7 3
Wines, viz. :			
In bottles	368½	"	92 1 11
Not in bottles, viz. :			
Port, Madeira, Hock, Burgundy and Claret	5527	"	1105 8 0
Sherry, at value £768 17 7	2541½	"	413 16 0
Other Wines	6480	"	648 0 0
Goods, Wares, and Merchandize, enumerated, to pay duty at the rate of 5 per cent. at value £96,763			4838 3 0
Good not otherwise enumerated or described, at value £400,279 17			40027 19 8
Totals			£106692 14 5

TOTAL VALUE,

In Sterling, of the Imports and Exports of the Colony of Newfoundland, from and to each Country, in the Year 1859.

COUNTRIES.	IMPORTS THEREFROM	EXPORTS THERETO
United Kingdom	£529596	£376440
British Colonies, viz.:		
Jersey	13946	11673
Canada	53302	9299
Nova Scotia	133291	43919
New Brunswick	9553	2097
P. E. Island	15589	1165
British Guiana		13884
British W. Indies ...	34935	76550
Gibraltar		1022
Mauritius		3607
Foreign Countries, viz.:		
Hanse Towns	89736	
France	2481	3157
Spain	10973	180653
Portugal	7541	85555
Italy		42407
Sicily	88	
Elba	77	
United States	361438	106969
Foreign W. Indies	59062	58241
Brazils	333	340875
St. Peters	1347	
Total	£1,323,288	£1,357,113

A RETURN

Of the Number, Tonnage and Crews of Vessels of each Nation Entered and Cleared at Ports in Colony of Newfoundland, in 1859.

NATIONALITY OF VESSELS.	ENTERED.			CLEARED.		
	NO.	TONS.	MEN.	NO.	TONS.	MEN.
United Kingdom	298	82519	5085	282	80035	4928
British Possessions	970	104830	6430	862	100365	6094
Hanse Towns	7	1167	57	3	650	26
Denmark	6	751	40	10	1332	70
Hanover	2	229	11	1	105	5
Spain	80	10511	769	72	9718	703
Portugal	4	587	35	4	582	35
Holland	2	289	14	2	289	14
Prussia	2	435	18	1	148	8
Russia	1	404	14	1	404	11
United States	51	7691	330	40	6545	256
Total	1423	209413	12863	1278	200173	12150

A RETURN

Of the Number, Tonnage, and Crews of Vessels Entered and Cleared at each Port in the Colony of Newfoundland, in the Year 1859.

NAMES OF PORTS.	ENTERED.			CLEARED.		
	NO.	TONS.	MEN.	NO.	TONS.	MEN.
St. John's	992	158157	9305	859	153984	9133
Twillingate	5	516	36	7	870	56
Fogo	14	1665	87	12	1398	69
Greenspond	7	797	43	10	1044	74
Trinity	11	1811	82	13	1471	92
Panavista	5	515	34	7	760	49
Carbonear	18	1884	114	18	2341	136
Harbor Grace	262	22579	1436	144	20276	1255
Edges	10	979	60	11	1141	70
St. Mary's				1	93	7
Placentia	4	246	20	4	246	20
Little Placentia	5	310	25	6	506	37
Oderin	4	126	17	5	338	27
Burin	36	2662	173	36	2878	191
St. Lawrence	9	470	43	2	98	9
Lanalinie	8	267	35	4	194	18
English Harbor	50	3568	266	19	1561	106
Harbor Briton	40	4416	306	29	4677	287
Gaultois	21	1409	96	10	1263	79
Burgeo	25	1916	143	7	823	59
LaPoile	87	5321	482	74	1298	376
Total	1423	209413	12803	1278	197173	12150

A RETURN

Of the Number, Tonnage, and Crews of Vessels Entered from and Cleared for each Country, at Ports in the Colony of Newfoundland, in the Year 1859.

COUNTRIES.	ENTERED.			CLEARED.		
	NO.	TONS.	MEN.	NO.	TONS.	MEN.
United Kingdom	174	47423	2782	129	34150	2194
British Possessions	712	72239	4653	725	88799	5133
Hamburg	43	6921	337			
France				1	46	10
Spain	111	15557	942	84	10956	767
Portugal	47	5911	375	51	6610	426
Italy	2	332	24	23	2990	173
United States	215	46947	2743	84	28336	1781
Spanish West Indies	45	6737	408	34	4682	263
Danish Possessions				2	452	17
Portuguese Possessions	1	83	5			
French Possessions	36	1062	126	2	49	6
Venezuela				2	237	13
Havti				1	150	6
Brazil	37	7211	493	120	24616	1351
Total	1423	209413	12803	1278	206173	12150

ABSTRACT FROM NEWFOUNDLAND CENSUS, OF 1857.

Names of Districts.	Number of Inhabitants.	No. of Males.	No. of Females.	No. of Various Religious Denominations.								
				Church of England.	Catholics.	Wesleyans.	Kirk of Scotland.	Free Kirk.	Congregationalists.	Other Denominations.		
St. John's East	17352	8757	3395	3493	11867	1303	208	256				
St. John's West	13124	6701	6423	2162	10033	579	82	169				7
Harbor/Maine (Conception Bay)	5386	2789	2397	1160	4153	71	2					
Port-de-Grave ditto	6489	3349	3140	2726	1637	2112	1				13	
Harbor Grace ditto	10067	5285	4782	5490	3390	1112	2			73		
Carbonear ditto	5233	2675	2558	791	2582	1859				1		
Bay-de-Verds ditto	6221	3274	2947	446	1583	4191				1		
Trinity Bay	10736	5618	5118	6016	1253	3460				4		1
Bonavista	8850	4705	4145	5714	2030	1083				9		
Twillingate and Fogo	9717	5167	4550	6232	1442	2036				7		
Ferryland	5228	2776	2452	127	5093	8						
Placentia and St. Mary's	8334	4434	3900	966	7156	208	4					
Burin	5529	3005	2524	1356	2354	1810	1				1	
Fortune Bay	3492	1994	1499	2787	647	30						29
Burgeo and LaPoile	3545	1961	1584	3172	89	282	2					
Totals	119304	62490	56814	42638	55309	20144	302	520	347		44	
French Shore	3334	1778	1556	1647	1586	85						16

The Census of the Labrador was cursorily taken by the Superintendent of Fisheries (James L. Prendergast, Esquire,) in 1856 and 1857, but it is not sufficiently correct or full to form a part of the foregoing Returns. The number of permanent residents, as given by that gentleman, from L'Anse Sablon to Sandwich Bay, both inclusive, including Belle Isle, is 1650, of whom 1331 are Protestants and 319 Catholics.

TARIFF OF WHARFAGE CHARGES

(Adopted at a Meeting of the Commercial Society, at St. John's,
12th October, 1860.)

On Salt and Coals	per hhd.	2d.
Ballast and Stones	per ton	3d.
Bricks	per M.	6d.
Firewood	per 100 sticks	3d.
Staves	per M.	1s.
Lumber	per M.	6d.
Shingles	per M.	1d.
Scantling	per ton	4d.
Grain	per bushel	½d.
Hay	per ton	2s. 6d.
Barrel Hoops	per 100 bdls.	1s.
Hogshead ditto	per ditto	2s.
Puncheon ditto	per ditto	3s.
Barrels (empty)	each	½d.
Hogsheads ditto	do.	2d.
Puncheons ditto	do.	4d.
Barrels containing all description of goods			1d.
Hogsheads containing all description of goods (except Sugar)			3d.
Puncheons containing all description of goods			6d.
Hogsheads of Sugar	each	6d.
Bread	per bag	1d.
Drums	each	½d.
Cod Fish	per qtl.	½d.
Oil	per tun	2s.
Tea	per chest	1d.
Measurement Goods	per ton	2s.
All goods not enumerated above, at the rate of per brl. cap'cy. 1d.			

AND, ON VESSELS

Under 75 tons	per day	5s.
From 75 tons to 150 tons	do.	10s.
From 150 to 250 tons	do.	12s. 6d.
Over 250 tons	do.	15s.

FIRE, LIFE AND MARINE INSURANCE COMPANIES.

Phoenix Fire Insurance Company of London—Agents for Newfoundland, W. & G. Rendell, St. John's.

Agents for Lloyds—Brooking, Son & Co., St. John's. Thomas Ridley & Sons, Harbor Grace. Philip DeQuintville, Labrador.—John P. Frecker, St. Pierre.

Colonial Life Assurance Company—Registered and Empowered under Act of Parliament 7 and 8 Vict. Cap. 110. Capital, £500,000. St. John's Branch, W. Grieve and Hon. L. O'Brien, Directors; George T. Brooking, Agent.

Alliance British and Foreign Life and Fire Assurance Company, London. Capital, £5,000,000 sterling. Brooking, Son & Co., Agents for Newfoundland.

The Royal Insurance Company, for Fire, Life and Annuities.—Royal Insurance Buildings, Liverpool; and 29 Lombard Street, London. Capital, £2,000,000 sterling. Job, Brothers & Co, Agents, Newfoundland Branch.

Liverpool and London Fire and Life Insurance Company—Established 1836. Capital, £2,000,000 sterling. Invested fund, £1,200,000. Income, £450,000. Bowring, Brothers, Agents for Newfoundland.

Britannia Life Assurance Office, London—St. John's Branch, D. W. Prowse, Agent.

Queen Insurance Company, for Fire and Life—General Agent for Newfoundland, D. W. Prowse.

St. John's Marine Insurance Company—Incorporated by Act of Local Legislature, 1853. Committee—Charles F. Bennett, John Bowring, C. K. Hepburn, Stephen Rendell, Patrick Tasker, Hon. Nicholas Stabb, Gustav Ehlers, Peter G. Tessier, Henry K. Dickinson. John B. Bulley, Agent. John Bemister, Surveyor.

Newfoundland Marine Assurance Company—Capital, £25,000.—Directors—Patrick Tasker, President; Hon. L. O'Brien, Henry K. Dickinson, James S. Clift, Peter G. Tessier, Alan Goodridge, Walter Grieve, John MacGregor, William Kelligrew. Edward L. Jarvis, Secretary. James Pitts, Surveyor.

Newfoundland Fire Insurance Company—Capital, £100,000. Directors—Walter Grieve, President; John MacGregor, Peter G. Tessier, Henry K. Dickinson, Hugh W. Hoyles, John Fox, Hon. Edward Morris, Hon. Nicholas Stabb, Gustav Ehlers. Secretary—Edward L. Jarvis.

International Life Assurance Society, of London—Capital, £500,000 sterling, in addition to about £100,000 currency, of reserved profits. Directors—Hugh W. Hoyles, Chairman; Charles F. Bennett, Ewen Stabb, Ambrose Shea, Patrick Tasker. Frederick B. T. Carter, Q.C., Solicitor. Hon. Nicholas Stabb, General Agent for Newfoundland.

Imperial Fire Insurance Company, of London—Established 1803. Capital subscribed and invested, £1,600,000. Agent for St. John's, Thomas G. Morry.

Star Life Assurance Society, Chief Office, 48, Moorgate Street, London. St. John's—W. C. Simms, M.D., Medical Referee. Agent for Newfoundland, Joseph Woods.

Baltimore Underwriters, Boston Underwriters—Twelve Offices. Attorney and Agent for Newfoundland, W. H. Newman.

Boards of Underwriters of the Cities of New York and Philadelphia. Attorney and Agent for Newfoundland, W. H. Newman.

Canada Life Assurance Company—Office in St. John's. Matthew W. Walbank, Agent for Newfoundland.

Albert Life Assurance and Guarantee Company—7, Waterloo Place, Pall Mall, S. W., London. Established, 1838—William J. Ward, Agent at St. John's for the Islands of Newfoundland, Cape Breton and Prince Edward. Medical Referee, at St. John's, ———. F. B. T. Carter, Q.C., Solicitor. Commercial Bank of Newfoundland, Bankers.

Mutual Marine Insurance Club of Conception Bay—John Fitzgerald, Secretary.

Mutual Insurance Society of Brigus, Conception Bay—Jonathan Percy, Secretary.

JOINT STOCK COMPANIES, PUBLIC SOCIETIES, &c.

New York, Newfoundland, and London Telegraph Company—Directors in New York—Peter Cooper, Moses Taylor, Cyrus W. Field, Marshal O. Roberts, Wilson G. Hunt.

Peter Cooper, President. Cyrus W. Field, Vice-President. Moses Taylor, Treasurer. David D. Field, Counsel. Ambrose Shea, Local Manager, St. John's, Newfoundland. Alexander M. McKay, Superintendent.

St. John's Gas Light Company—Directors—John Bowring, President; Stephen Rendell, Vice-President; Hon. Laurence O'Brien, Richard O'Dwyer, Gustav Ehlers, Walter Grieve, Hugh W. Hoyles. William F. Rennie, Secretary.

St. John's Water Company—Directors—John Bowring, President, Thomas R. Smith, Vice-President; C. F. Bennett, Stephen Rendell, Walter Grieve, Gustav Ehlers, F. C. K. Hepburn. Hugh W. Hoyles, Q. C., Solicitor. William J. Ward, Secretary.

General Water Company—Incorporated 1859. Directors, Ambrose Shea, President; F. C. K. Hepburn, Walter Grieve, Stephen Rendell, Hon. Robert Kent, John MacGregor, William H. Mare. Hugh W. Hoyles, Q. C., Solicitor. William J. Ward, Secretary.

St. John's Library and Reading Room—Peter G. Tessier, President. John Bowring, Frederick R. Page, Vice-Presidents. William F. Rennie, Acting Secretary and Librarian. Committee—Hon. Robert Kent, George Lash, Hon. John Hogsett, Lewis Tessier, Robert Matthew, John Mortimore, John W. M'Coubrey.

Mechanics' Institute—John Fox, President. Adam Scott, D. Woodley Prowse, Vice-Presidents. Edward L. Moore, Treasurer. A. H. Thomson, Curator of Museum. E. M. J. Delaney, Curator of Apparatus. William F. Rennie, Secretary. Committee—Edward Meehan, Christopher Brown, Gilbert Browning, George Rendell, William T. Parsons, Stephen Rendell, James M'Kinlay, Thomas Horwood, Horatio Canning. Bankers—Commercial Bank of Newfoundland.

St. John's Athenæum—Charles F. Bennett, President. John Fox, Vice-President. Directors—James S. Clift, P. G. Tessier, T. McCannan, Hon. John Kent, Dr. Winter, Hugh W. Hoyles, Gustav Ehlers, John Bowring. James Seaton, Secretary and Treasurer. Commercial Bank of Newfoundland, Bankers.

Permanent Loan and Investment Society of St. John's, Nfld.—Established, June, 1854. Directors—Patrick Tasker, President; G. Ehlers, Hon. Laurence O'Brien, Francis C. K. Hepburn, James J. Graham. Trustees—Charles F. Bennett and Hon. Laurence O'Brien. Commercial Bank of Newfoundland, Bankers. Hugh W. Hoyles, Q. C., Solicitor. William J. Ward, Secretary.

Masonic—P. Tasker, D. P. G. Master. John G. James, P. G. Secretary. Officers of St. John's Lodge, No. 844—J. S. Clift, W. M. J. S. Hayward, S. W. Thomas Gillespie, J. W. G. Lash, Treasurer. John G. James, Secretary. G. Browning, S. D. N. S. Stabb, J. D. J. Hellyer, I. G. J. Wilkinson, Tyler. J. Adam and R. T. Rankin, Stewards. G. F. Bown, G. G. Geddes, and R. Dicks, Committee of Charity.

Officers of Avalon Lodge, No. 1078—James N. Fraser, W. M. Robert Grieve, S. W. Theodore Clift, J. W. Frederick C. Jagg, S. D. Frederick G. Bunting, J. D. William Knowling, Secretary. Thomas Soper, I. G. J. Wilkinson, Tyler. George Elmsly and John Waddell, Stewards.

St. John's Young Men's Literary and Scientific Institute—Instituted March, 1858—Hon. N. Stabb, President. Hon. Robert J. Pinsent, William Boyd, Vice-Presidents. John B. McLea, Treasurer: D. W. Prowse, Secretary.

Agricultural Society—His Excellency the Governor, Patron.—Hon. Patrick Kough, President. Matthew M. Walbank, Charles Simms, William V. Whiteway, George F. Bown, Vice-Presidents.—Joseph Crowdy, Treasurer. W. F. Rennie, Secretary.

Coopers' Society—George Geary, President. Denis Byrne, Vice-President. Michael Murphy, First Treasurer. Peter Lawlor, Second Treasurer. Lawrence Comerford, First Assistant. John Power, Second Assistant. John Kenney, Secretary.

Newfoundland Fishermen's Association—Capt. C. Power, President. Capt. W. Coady, Vice-President. Capt. A. Graham, Assistant Vice-President. Capt. J. McLaughlin, First Treasurer. Capt. W. Cole, Sr., Second Treasurer. John J. Geran, Secretary.

St. John's Phoenix Volunteer Fire Company—Francis Roggin, First Director. William O'Grady, Second Director. Patrick Reardon, Treasurer. Philip Hally, Secretary.

Cathedral Fire Brigade—Patrick O'Sullivan, First Director.—William McGrath, Second Director. Treasurer and Secretary, John Donnelly.

Manufactories, Mills, Works, &c—St. John's—2 Corn Mills, 2 Saw Mills, 1 Bone Mill, 1 Gas Manufactory, 1 Iron Foundry, 1 Brewery, 1 Water Works, 2 Seal Oil Manufactories, (by machinery) 2 Bakeries, (by machinery), 1 Patent Slip. Brigus—1 Corn Mill.—Harbor Grace—1 Corn Mill, 1 Gas Manufactory. Exploits Bay—2

Saw Mills. Middle Arm of Green Bay—1 Saw Mill. Exploits (Burnt Island)—2 Saw Mills. Hall's Bay—2 Saw Mills. Trinity Bay—5 Saw Mills.

BENEVOLENT AND CHARITABLE SOCIETIES, &c.

Benevolent Irish Society—Founded in 1806. The Right Rev. Dr. Mullock, Patron. Hon. L. O'Brien, Vice-Patron. Hon. Edward Morris, President. Hon. Robert Kent, Vice-President. Thomas S. Dwyer, First Assistant. John Kitchin, Second Assistant. John Kavanagh, Treasurer. James Healy, Secretary. John Power, Chairman Orphan Asylum. John O'Donnell, Chairman of Charity. John Rawlins, Chairman of Review and Correspondence. Robert J. Kent, Secretary Orphan Asylum School.

Church of England Asylum for Widows and Orphans—His Excellency the Governor, Patron. The Right Rev. Dr. Feild, Visitor and President. The Venerable Archdeacon Lower, M.A., Rev. T. M. Wood, Vice-presidents. The Right Rev. the Visitor and President (*ex-officio*), Henry K. Dickinson, John Winter, M.D., Trustees. Francis C. K. Hepburn, Treasurer. John Tunbridge, Honorary Secretary. Charles Crowdy, M. D., Physician. Committee—Judge Robinson, Eugenius Harvey, Hugh W. Hoyles, Q.C., Philip Hutchins, John W. Smith, Kenneth McLea, jr., Rev. G. M. Johnson, James Hayward, William H. Mare, Hon. John Hogsett.

St. John's Factory—Honorable Laurence O'Brien, Thomas Glen, James J. Rogerson, Edmund Hanrahan, Trustees.

Newfoundland Natives' Society—Hon. Philip Duggan, President. Thomas G. Morry, First Vice-President. Frederick B. T. Carter, Second Vice-President. James S. Clift, Treasurer. Dr. Dearin, Chairman of Review and Correspondence. William Freeman, Chairman of Relief. William Pitts, Secretary. Randal Green, Assistant Secretary.

St. George's Society—Thomas R. Smith, President. George F. Bown and George T. Rendell, Vice-Presidents. Henry Wood, Treasurer. John C. Withers, Secretary. Committee of Charity—The above-named officers and the Venerable Archdeacon Lower, Revs J. F. Phelps, T. M. Wood, and J. Pearson; John Bowring, H. K. Dickinson, P. G. Tessier, F. C. K. Hepburn, C. S. Warren, G. J. Hayward, W. Rendell. Medical Adviser, H. H. Stabb, M. D.

St. Andrew's Society—George G. Geddes, President. John B. McLea, Vice-President. James Baird, Treasurer. James N. Neilson, Secretary. Committee of Charity—Charles Rankin, Robert Blackwood, and Robert Peace.

Newfoundland British Society—Charles Rankin, President.—Nathaniel Hill, Vice-President. Joseph Gribble, Treasurer. Edward Knight, Secretary.

Society of St. Vincent de Paul—John Little, President. Edward Power, Vice-President. John Rawlins, Assistant Vice-President.—William Kitchin, Treasurer. William Doutney, Secretary.

Grand Division of the Sons of Temperance—William D. Morison, G.W.P. Robert Peace, G.W.A. Ebenezer, Brace, G.S. Lionel T. Chancey, G.T. John English, G. Chaplain. J. N. Carter, G.C. John Smith, G.S.

Mechanics' Society—John Maher, President. John Power, Vice-President. Patrick Dealy, First Assistant. Edward Ryan, Second Assistant. John Coady, First Treasurer. James Keough, Second Treasurer. Thomas Whelan, Third Treasurer. Charles O'Brien, Secretary.

Dorcas Society—Mrs. J. B. Bulley, President and Treasurer.—Mrs. Christopher Brown, Secretary. Mrs. Botterell, Mrs. Brown, Mrs. Stabb, Dispensers.

Dorcas Society, Harbour Grace—Mrs. Drysdale, President and Treasurer.

Dorcas Society, Carbonear—Mrs. Brettle, President and Treasurer.

Benevolent Irish Society, Conception Bay—John Fitzgerald, President. Patrick Devereux, Vice-President. Andrew T. Drysdale, First Assistant. William Howlett, Second Assistant. Robert Walsh, Treasurer. Edward Dwyer, Secretary. Pierce Maher, Chairman of Charity. James H. Drysdale, Chairman of Review and Correspondence.

Trinity Benefit Club—Instituted in 1838. William Kelson, Treasurer.

THE ROYAL FAMILY OF GREAT BRITAIN.

QUEEN ALEXANDRINA VICTORIA. (only child of Edward Duke of Kent, who died January 23, 1820), born May 24, 1819; proclaimed June 21, 1837; crowned June 28, 1838; married February 10, 1840, to her cousin, Albert Francis Augustus Charles Emanuel, of Saxe-Coburg and Gotha, born August 26, 1819. *Children:—*

Victoria Adelaide Maria Louisa, Princess Royal, born November 21, 1840.

Albert Edward, Prince of Wales, and Earl of Dublin, born November 9, 1841.

Alice Maud Mary, born April 25, 1843.

Alfred Ernest Albert, born August 6, 1844.

Helena Augusta Victoria, born May 25, 1846.

Louisa Carolina Alberta, born March 18, 1848.

Arthur William Patrick Albert, born May 1, 1850.

Leopold George Duncan Frederick, born April 7, 1853.

Beatrice Mary Victoria Feodore, born April 14, 1857.

Her Majesty's Mother—Victoria Maria Louisa (Princess Dowager of Leiningen), Duchess of Kent, widow of Edward Duke of Kent, sister of the King of the Belgians, born August 17, 1786.

HER MAJESTY'S CHIEF OFFICERS OF STATE.

THE CABINET.

First Lord of Treasury—Viscount Palmerston, K.G.

Chancellor of the Exchequer—Right Hon. W. E. Gladstone.

Secretary of State for Foreign Department—Lord John Russell.

Secretary of State for the Home Department—Sir G. Cornwall Lewis.

Secretary of State for the Colonies—The Duke of Newcastle.
 War Secretary—Right Hon. Sydney Herbert.
 President of the Indian Board—Sir C. Wood, G.C.B.
 First Lord of the Admiralty—The Duke of Somerset.
 Lord Chancellor—Lord Campbell.
 President of the Council—The Earl of Granville, K.G.
 Privy Seal—The Duke of Argyll, K.T.
 President of the Board of Trade—Right Hon. T. Milner Gibson.
 Chancellor of the Duchy of Lancaster—Sir G. Grey.

IRELAND.

Lord Lieutenant—Earl of Carlisle.
 Chief Secretary—Right Hon. Edward Cardwell.
 Lord Chancellor—Right Hon. M. Brady.

COLONIAL GOVERNORS.

CANADA—Governor-General, His Excellency Sir Edmund Walker Head, &c., &c.

NEW BRUNSWICK—Lieut.-Governor, His Excellency, John Henry Thomas Manners Sutton, &c., &c.

NOVA SCOTIA—Lieut.-Governor, His Excellency, The Earl of Mulgrave, &c., &c.

PRINCE EDWARD ISLAND—Lieut.-Governor, His Excellency, George Dundas, &c., &c.

BERMUDA—Lieut.-Governor, His Excellency, Colonel Freeman Murray, &c., &c.

NEWFOUNDLAND—Governor, His Excellency, Sir Alexander Bannerman, &c., &c.

The following Official Notifications have been made since the foregoing sheets went to Press:—

James Rolls, of Bar'd Islands, to be a Member of the Board of Road Commissioners for Fogo.

Frederick J. Wyatt, to be a Member of the Protestant Board of Education for the Educational District of Trinity.

John Cantwell, to be a Member of the Board of Road Commissioners for Moreton's Harbor.

James Hamilton, Michael Bryan, Michael Byrne, Matthias Glaveen, Patrick Carroll, William Carroll, (Indian Cove) and James Lyver, (Waldon's Cove) to be a Board of Road Commissioners for Fortune Harbor.

George Lake, Sr., Elias Major, John Lake, John Spence, Sr., Thomas Rogers, Sr., John Forsay, Sr., and Edward Bennett, to be a Board of Commissioners for the Construction of a Breakwater at Fortune.

Member returned to serve in the House of Assembly for the Harbour Grace Division of the Electoral District of Conception Bay, James L. Prendergast, Esq.

PHENIX

FIRE ASSURANCE COMPANY,**Lombard Street and Charing Cross, London.**

ESTABLISHED IN 1782,

For Insuring every kind of PROPERTY in every part of the World, from Loss or Damage by Fire.

TRUSTEES AND DIRECTORS.

Decimus Burton, Esq
 Travers Buxton, Esq
 Octavius Edward Cope, Esq
 William Cotton, Esq
 John Davis, Esq
 George Arthur Fuller, Esq
 Charles Emanuel Goodhart, Esq
 James Alexander Gordon, Esq
 Edward Hawkins, Jr., Esq

Kirman D. Hodgson, Esq
 William James Lancaster, Esq
 John Dorian Magens, Esq
 I Masterman, Esq, M P.
 John Timothy Oxley, Esq
 Benjamin Shaw, Esq
 William James Thompson, Esq
 Henry Heyman Toulmin, Esq
 Matthew Whiting, Esq

Auditors—John Hodgson, Esq.; Peter Martineau, Esq.;
 Joseph Samuel Lescher, Esq.

Secretary—George William Lovell, Esq.

Assistant Secretary—J. J. Broomfield, Esq.

Architect and Surveyor—John Shaw, Esq.

Solicitors—Messrs. Dawes and Sons, Angel Court.

THE PHENIX FIRE OFFICE

Is confidently recommended to the notice of the Public, for the liberality and promptitude with which all claims upon it are adjusted and paid—as well as for the almost unlimited security which it affords, comprising, in addition to the large invested Capital of the Company, the whole fortunes of a numerous Proprietary composed of some of the most opulent gentlemen and merchants in the United Kingdom.

The “Phoenix Office” has carried on an extensive and successful business for upwards of “Seventy-five Years.” The duty paid by it to Government for Insurances in Great Britain and Ireland alone (exclusive of Farming stock) exceeds *One Hundred and Twenty-five Thousand Pounds sterling per annum.*

Annual and short time Insurances are undertaken by the “Phoenix Company,” on almost every description of risk in Newfoundland at moderate rates of premium, which may be known on application to the Agents at their Office in St. John’s, where Policies are issued free of charge.

W. & G. RENDELL,*Agents for Newfoundland.*

THE
LIVERPOOL and LONDON
FIRE. AND LIFE INSURANCE COMPANY.

Established in 1836.

LIBILITY OF PROPRIETORS UNLIMITED.

Invested Funds—£1,213,317.

Progress of the Company since 1848.

Year.	Fire Premiums.	Life Premiums.	Invested Funds.
1848	35,472	19,840	388,990
1853	113,612	49,128	620,898
1858	276,056	121,411	1,156,035
1859	295,414	127,415	1,213,317

THE ANNUAL INCOME EXCEEDS £450,000.

FIRE INSURANCE

On all descriptions of PROPERTY. Rates as low as is consistent with proper security.

LIVERPOOL BOARD,

HEAD OFFICE, 1, DALE STREET.

CHAIRMAN,

George Grant, Esquire.

DEPUTY-CHAIRMEN,

Charles S. Parker, Esq., James Aspinall Tobin, Esq.

John B. Brancker, Esq
 A. H. Campbell, Esq
 Thomas Haigh, Esq
 George Holt, Esq
 Joseph Hubback, Esq
 Harold Littledale, Esq
 John Marriott, Esq
 Francis Shand, Esq
 Samuel Ashton, Esq

Thomas Brocklebank, Esq
 William Earle, Esq
 Robert Higgin, Esq
 Hugh Hornby, Esq
 George Hall Laurence, Esq
 Edward Moon, Esq
 Charles Saunders, Esq
 John Swainson, Esq
 J. C. Ewart, Esq., M.P.

SECRETARY,

Swinton Boulton, Esquire.

Prospectuses and all information can be had of the undersigned, *Agents for Newfoundland,*

BOWRING, BROTHERS,

St. John's.

ROYAL INSURANCE COMPANY,

Royal Insurance Buildings, North John Street, and Dale Street, Liverpool; and 29, Lombard Street, Corner of Clement's Lane, London.

**CAPITAL—£2,000,000,
In 100,000 Shares of £20 Each.**

Extracts from the Report of the Actuary at the Annual General Meeting, held 10th August, 1860.

I have to report that the Bonus which may be safely apportioned to the Participating Policies is £2 per Cent. per Annum, to be added to the original Sum Assured of every Participating Policy effected previously to the 1st January, 1858, for each entire year that it had been in existence on the 31st December, 1859, since the last appropriation of Bonus thereon.

THE LIFE FUNDS

In hand have progressed to a most gratifying extent in the interval since the last valuation. At the period of that valuation (1854) the Balance in hand—exclusive of Debts on Policies, and after appropriating the sum of £7,819 15s. 6d., being one-third of the Profits declared to the Shareholders—was £56,793 1s. 2d. The Balance in hand is now raised to the sum of £207,061 19s, exclusive of an amount of £7,248 2s 1d, present Debts on Policies. These amounts have grown in magnitude every year since the last valuation. During the first Ten years the amount added annually averaged less than £7,000. From 1854 to 1859 (inclusive) the average annual addition was upwards of £30,000, while the total sum was made up of *successive amounts of a rapidly increasing ratio*, beginning by an item of only £12,014 7s 1d in 1855, and ending with a sum of £45,229 7s 2d in 1859.

THE INVESTMENTS

Have not only been made at a most favourable rate of interest, but no loss from them has been incurred—they are in fact strictly available, and might at any time be realised.

Indeed the “Royal Insurance Company” having, in addition to the Investments on the Life Account, large resources of Capital paid up and Reserves on other Branches of business,

all of which are liable for claims on the Life Accounts, could within a short time realise not *alone* the amount of its Life Liabilities, but that sum far more than doubled, if it were required to do so.

POLICIES WITHOUT PAYMENT OF PREMIUM AND PRESENT VALUES.

The following statement will make clear the increasing value which will attach to the Policies of the Company, when in existence for some years:—

Policy, dated 2nd September, 1845; Sum Assured	£2,000	0	0
Amount of Policy, with Bonuses, at the present moment, and subject to future additions at subsequent valuations	2,560	0	0
<i>Or</i> , a Policy would be issued in lieu, without the payment of any further Premiums, for	1,172	6	0
The Total Premiums already paid being only	910	0	0
Policy, dated 1st December, 1845; Sum Assured	£999	0	0
Amount of Policy, with Bonuses, at the present moment, and subject to future additions at subsequent valuations	1,279	0	0
<i>Or</i> , a Policy would be issued in lieu, without the payment of any further Premiums, for	546	10	0
The Total Premiums already paid being	364	7	6
Policy, dated 23rd November, 1848; Sum Assured	£300	0	0
Amount of Policy, with Bonuses, at the present moment, and subject to future additions at subsequent valuations	366	0	0
<i>Or</i> , a Policy would be issued in lieu, without the payment of any further Premiums, for	149	9	10
The Total Premiums already paid being	241	16	0

PROGRESS OF THE FIRE BRANCH OF THE ROYAL INSURANCE COMPANY.

The following extract from the Report of the present year will show the rapid growth of its Fire Revenue:—

	Total Premiums Received.	Increase of each Year above the Preceding one.
1850	£44,027 10 0	£9,557 19 8
1851	52,673 5 11	8,645 15 0
1852	76,925 4 2	24,251 18 3
1853	112,564 4 4	35,639 0 2
1854	128,459 11 4	15,895 7 0
1855	130,060 11 11	1,601 0 7
1856	151,733 9 6	21,672 17 7
1857	175,049 4 8	23,315 15 2
1858	196,148 2 6	21,098 17 10
1859	228,314 7 3	32,166 4 9

Perhaps the following statement of the Periodical Additions made to its Fire Reserved Fund, will more clearly exhibit its high position and vast resources. It should be observed that these sums reserved are in addition to its large Capital in hand of £283,065, and are quite irrespective of the Life and Annuity Accumulations :—

In the year 1849 the Reserved Fund amounted only to	£24,731 12 0
In the three following years, £27,046 3s was added to that amount	27,046 3 0
In the next three years, £29,206 12s 9d was added	29,206 12 9
And in the past three years the sum added was	66,158 2 3
Making a Total now at the credit of that Account of	£147,142 10 0

(1859 not yet determined.)

The Total Funds in hand are, therefore—

Capital paid up	£283,035 0 0
Fire Reserved Fund	147,132 10 0
Life Fund	207,001 19 0
Annuity Funds	43,308 13 10
Endowment do.	5,285 16 8
	<hr/>
	£685,803 19 6

Besides a considerable amount to Profit and Loss, not yet disposed of.

Division of Profits every Five Years.

PERCY M. DOVE, *Actuary and Manager.*

JOB, BROTHERS & Co.

Agents for Newfoundland.

ABSTRACT

CENSUS & RETURN

OF THE

Population, &c., of Newfoundland,

TAKEN IN 1857.

Printed on good paper, royal quarto, and substantially half-bound, for Sale at the Office of the *Courier*, Duckworth Street, third door West of Prescott Street, and at the Shop of Mr. T. McCONNAN, Water Street.

THE
Colonial Life Assurance Company,

*Registered and Empowered under Act of Parliament, 7 and 8
 Victoria, Cap. 110.*

CAPITAL—£500,000.

GOVERNOR.

The Right Honorable the Earl of Elgin and Kincardine.

LONDON—4 A LOTHBURY.

EDINBURGH, 1 GEORGE-ST. GLASGOW, 35, ST VINCENT PLACE.

Board of Directors in Edinburgh.

GEORGE MOIR, Esquire—Chairman.

George Mercer, Esq
 James M. Melville, Esq
 Peter Ramsay, Esq
 George Patten, Esq
 James Duncan, Esq
 Archibald Horne, Esq

Henry David Hill, Esq
 James Hay, Esq.
 Alexander J. Russell, Esq
 William Stewart Walker, Esq
 John Robert Todd, Esq

*Medical Adviser—Henry Marshall, Esq
 Actuary—William Thomas Thompson, Esq
 Secretary—Henry Jones Williams, Esq
 Auditor—Charles Pearson, Esq*

Board of Directors in London.

The Right Honorable the EARL OF MINTO.

Alexander Gillespie, Esq
 Thos. Holdsworth Brooking, Esq
 John Scott, Esq

David Laing Burn, Esq
 Alexander McGregor, Esq

*Medical Adviser—Dr. John W. Woodfall.
 Secretary—Sydney Crocker, Esq.*

Board of Directors in Glasgow.

Mungo Campbell, jr., Esq
 William Eccles, Esq
 Alexander Glasgow, Esq

George Gillespie, Esq
 Malcolm M'Caul, Esq
 Donald Smith, Esq

*Medical Adviser—Dr. A. D. Anderson.
 Secretary—William Hunter, Esq.*

Board of Directors in Newfoundland.

Head Office—St. John's.

G. T. Brooking, Esq. Hon. Laur. O'Brien. Walter Grieve, Esq.

*Medical Adviser—Henry Hunt Stabb, Esq., M.D.
 Agent—George T. Brooking.*

GEO. T. BROOKING,

Agent for Newfoundland.

ALLIANCE
BRITISH AND FOREIGN
Life and Fire Assurance Company.
Bartholomew Lane, London.

Established by Act of Parliament.

CAPITAL—£5,000,000 Sterling.

Board of Direction :

Samuel Guernsey, Esq. | Sir Moses Montefiore, F.R.S.

Directors.

James Alexander, jr., Esq
G. H. Barnett, Esq
Sir E. N. Boston, Bart
Sir R. Campbell, Bart
Benjamin Cohen, Esq
Edward Fletcher, Esq
Charles Gibbes, Esq
William Gladstone, Esq

James P. Howard, Esq
John Irving, Esq
Louis Lucas, Esq
Thomas Masterman, Esq
Thomas Richardson, Esq
Lionel N. D. Rothschild, Esq
Oswald Smith, Esq
H. M. Thornton, Esq

Auditors.

Sir Geo. Carrol, Samuel Guernsey, jr., Esq., Andrew Johnston, Esq.

Bankers—Messrs. Barnett, Hoares & Co.

Actuary—Benjamin Gompertz, Esq., F.R.S.

Secretary—Andrew Hamilton, Esq.

Physician—John R. Hume, M.D., Curzon Street

Solicitor—John M. Pearce, Esq.

Surveyor—Thomas Allason, Esq.

Established March, 1824.

The Rates of the Premiums of Assurance for the greater part of *Life*, will be found lower than those in use in many of the older and most respectable Offices.

The Premiums of Assurance on *Fire*, are the same as those which are demanded by the first class of Assurance Companies.

Parties Insured participate in Profits every Five Years.

Losses by Lightning made good.

BROCKING, SON & Co.

Agents.

IMPERIAL
FIRE INSURANCE COMPANY,
LONDON.

Instituted 1803.

Subscribed and Invested Capital,
ONE MILLION SIX HUNDRED THOU-
SAND POUNDS.

Directors :

Sir CHARLES RUGGE PRICE, Bart., Chairman.

EDWARD HENRY CHAPMAN, Esq., Deputy-Chairman.

Thomas G. Barclay, Esq.
 James Christian C. Bell, Esq.
 R. Cooper Lee Bevan, Esq.
 James Brand, Esq.
 George H. Cutler, Esq.
 Henry Davidson, Esq.
 Duncan Dunbar, Esq.
 Samuel Hibbert, Esq.
 Sir John Kirkland, Esq.
 William Lyall, Esq.

James Malcolmson, Esq.
 Claude Neilson, Esq.
 Frederick Patison, Esq.
 John Sanderson Rigge, Esq.
 William R. Robinson, Esq.
 John Scott, Esq.
 M. T. Smith, Esq., M. P.
 Newman Smith, Esq.
 Richard Twining, Esq.

Ex-Directors :

Augustus H. Bosanquet, Esq.
 Charles Cave, Esq.
 George Field, Esq.

George Hibbert, Esq.
 Samuel Hyde, Esq.
 James G. Murdoch, Esq.

Auditors :

Paul Butler, Esq.
 Isaac Carr, Esq.
 George William Cottam, Esq.

Thomas A. Gibb, Esq.
 Charles Marryat, Esq.

Ex-Auditor :

James Scott, Esquire.

Agent, St. John's, Newfoundland,

THOMAS G. MORRY.

THE QUEEN
Insurance Company,
FOR FIRE AND LIFE.

CHIEF OFFICE.

LIVERPOOL—Queen Insurance Buildings.

BRANCH OFFICES.

LONDON—2, Royal Exchange Buildings.

MANCHESTER—30, St. Ann Street.

GLASGOW—146, Buchanan Street.

Trustees :

T. Edwards Moss, Esq. Christopher Bushell, Esq.
Edward Heath, Esq.

Board of Direction.

Chairman—Edward Heath, Esq.

Deputy-Chairman—Thomas B. Forwood, Esq.

Francis A. Clint, Esq.

George W. Erving, Esq.

C. R. Hall, Esq.

Alexander Hastie, Esq.

Joseph Kitchen, Esq.

John L. Newall, Esq.

James A. Picton, Esq.

Bernard Hall, Esq.

Bankers—Messrs. Moss & Co.

Auditors—Messrs. Banner & Son.

Solicitors—Messrs. Haigh & Thompson.

Physician—J. Turnbull, Esq., M. D.

Manager and Actuary—W. P. Clirehugh, Esq.

Directors in Glasgow.

Chairman—Alexander Hastie, Esq.

Robert Bryson, Jun., Esq. Alexander Dicks, Esq.

Robert Kerr, Esq.

AGENT—D. W. PROWSE,

St. John's, Newfoundland.

THOMAS HIGGINS,

Sub-Agent Harbor Grace.

ALBERT
LIFE ASSURANCE & GUARANTEE COMPANY,
Established 1838.

Including the **MEDICAL, INVALID and GENERAL LIFE ASSURANCE COMPANY.**

CHIEF OFFICE:

7, Waterloo Place, Pall Mall, London.

Annual Income from Life Premiums, £220,000.

MARITIME PASSENGERS DEPARTMENT.

Risks taken assuring Passengers against the dangers and accidental loss of Life from *Maritime travel to all parts of the world.*

A Bonus every three years. Four Bonuses have already been declared, ranging from *Twenty-five to Fifty per cent.* on the premiums paid.

NEWFOUNDLAND AGENCY:

Medical Referees—Drs. Crowdy and Simms.

Particulars may be known and Insurance effected on application to

WILLIAM J. WARD,

Agent for Newfoundland, Cape Breton, and Prince Edward's Island.

Duckworth Street, St. John's.

STAR
Life Assurance Society,

(Founded 1843.)

Capital—£100,000 Sterling.

Offers all the benefits which have been developed during the progress of the system of LIFE ASSURANCE. The Premiums are charged at the lowest rates consistent with safety to the Assured.

Nine-tenths or ninety per cent. of the Profits, ascertained every five years, are divided among Policy-holders having paid Three Annual Premiums.

NEWFOUNDLAND AGENCY.

Medical Referee:

W. C. SIMMS, Esq., M.D., *Member of the Royal College of Surgeons, Edinburgh.*

JOSEPH WOODS,

Agent for Newfoundland.

**TIN WARE and STOVE
ESTABLISHMENT.**

George Gear,

Wholesale and Retail Dealer in

Parlor, Hall, Office & Cook Stoves,

RANGES,

FURNACES

GRATES,

SUMMER PIECES, &c:

A Large Assortment of

TINWARE

Constantly on Hand.

WATER-STREET, Two Doors West of W. & H. Thomas & Co's.
ST. JOHN'S, N. F.

Particular attention given to Job Work.

Book and Job Printing,

OF EVERY DESCRIPTION

Neatly executed at the shortest notice the nature of the Work
will admit of,

At the Office of the "Courier," Duckworth Street, three doors
West of Prescott Street.

FISH, OIL, CASH RECEIPT, AND ORDER

BOOKS

ALWAYS ON HAND.



ELMSLY & SHAW,
GENERAL GROCERS,

AND

WINE and SPIRIT MERCHANTS,
ST. JOHN'S,
Newfoundland.

ROBERT PEACE,

DEALER IN

COOKING STOVES and RANGES,

Parlour, Office, Hall

STOVES.

Gothic Grates, &c.,

From Manufacturers in Albany, Troy, Taunton, New York
 and Boston.

STOVE-PIPES,

TIN, COPPER, and BRASS WORK.

Adjoining Messrs. Baine, Johnston & Co's.,
 Water Street.

HEBER BUDDEN,

AUCTIONEER AND
GENERAL COMMISSION AGENT,
 STORE and OFFICE Opposite the Galway Steamer Wharf,
St. John's, Newfoundland.

N.B.—Particular attention paid to Out-door Sales of Furni-
 ture, &c., &c. Sales made in any of the Outports at *shortest*
Notice and Charge reasonable.

Cummings, Rich & Co.,

Nos. 82, 84, and 86, UNION STREET,

Boston, Mass.,

Manufacturers of all kinds of

TRUNKS, VALISES

Carpet, Leather, and Enameled-cloth

BAGS,

Umbrellas, Patent Leather Belts,

HORSE BLANKETS,

SADDLES, HARNESS, &c., &c.

COMMON TRUNKS

For Shipping, made to Nest Seven together, at
 Prices that will *defy competition.*

Parties in want of any of the above Goods will find
 it to their advantage to give us a call.

ALEXANDER MITCHELL,

AUCTIONEER

AND GENERAL COMMISSION AGENT,

Opposite Job, Brothers & Co.,

Water Street,

ST. JOHN'S, NEWFOUNDLAND.

RICHARD B. HOLDEN,

Notary Public and Conveyancer,

ST. JOHN'S, NEWFOUNDLAND.

E. A. TEULON,

CARD ENGRAVER,

NO. 149½ WASHINGTON STREET, BOSTON, U. S. A.

Directly Opposite the Old South Church.

CARDS

Engraved on Copper Plate, in the most fashionable styles, at the following low prices. The sum at the extreme right is that charged at all other places in Boston for precisely the same articles.

	Stores Charge	
1 Engraved Plate and 50 Cards, for Visiting	\$1.75....	\$3.00
1 Engraved Plate and 100 Cards, for Weddings	2.75....	4.50
1 Engraved Plate, with Residence, for Weddings, and 100 Cards	3.00....	5.00
1 Invitation Plate and 100 Cards, for Weddings	4.50....	7.00
100 Cards, and Printing from an old Plate	1.50....	2.00

The above shall be Engraved in the neatest styles, and Printed on the best Cards used.

Also, constantly on hand a choice assortment of Wedding Envelopes, Cake-Boxes, Colored, Fancy, and Mourning Cards, Mourning Note Paper, and Wedding Stationery generally.

B. W. DUNKLEE & CO.,

MANUFACTURERS AND DEALERS IN

Furnaces, Ranges, Stoves, Mantels, Grates, &c.,

111 and 113 Blackstone Street, Boston, U. S.

Have always on hand a Large Assortment of

STOVES,

Among which are the following, viz. :

GOOD SAMARITAN—(Cooking Stove)

BOSTON BEAUTY—(Cooking Stove)

HOME TREASURE—(Cooking Stove)

WELCOME—(Cooking Stove)

PARLOR BEAUTY—(Parlor Stove)

METEOR GASS-BURNER—(Parlor Stove)

With an endless variety of GRATES, FURNACES, &c.

BOSTON, 1861.

**HENRY S. HILLS,
CHAIR DEALER,**

IN EVERY VARIETY,

Nos. 81, 83, 85, and 87,

(ENTRANCE 85,)

**FULTON STREET,
*Boston, United States.***

Cotton Lines, Nets and Seines.

THE Undersigned respectfully ask the Newfoundland Fishermen to give their Fabrics a fair trial, and it is believed that they will be found *durable, light* and of AMPLE STRENGTH. They are universally used in the United States.

American Net and Twine Manufacturing Company,

ADDISON, GILBERT & Co.

Agents.

43, Commercial Street, Boston.

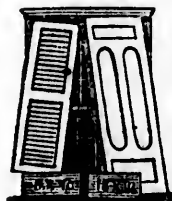
E. K. ROBINSON & CO.,

MANUFACTURERS AND DEALERS IN

Doors, Sash, Blinds, Window Frames, &c.

SALES-ROOM:

**24 Charlestown, Cor. Stillman St.,
BOSTON.**

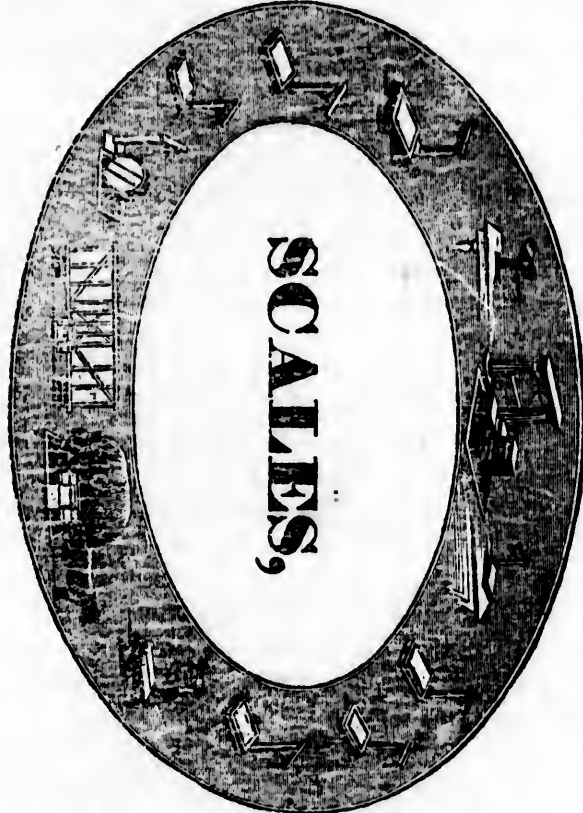


MANUFACTORY at AUGUSTA, ME.,

Messrs. DAVENPORT and WYMAN.

O. WILLIAMSON,

E. K. ROBINSON.

FAIRBANKS' PREMIUM STANDARD

The Best in the World.

MADE in the MOST THOROUGH manner, of the BEST MATERIALS by SKILFUL WORKMEN, and upon SCIENTIFIC PRINCIPLES, PROVED by experience of 30 years to be CORRECT.

They have received scores of premiums; gold, silver, and bronze medals; diplomas and honorary awards, in various exhibitions throughout the Country; and are constantly receiving the higher praise of the hundreds of thousands throughout the World, who have them in constant use.

At our Warehouses may be constantly found a complete assortment of Weighing Apparatus of every description, as RAIL ROAD, HAY, COAL, ICE, and STONE SCALES, WHEELBARROW, ROLLING MILL, PLATFORM SCALES, with and without wheels. COUNTER SCALES, APOTHECARIES, CONFECTIONERS, DRUGGISTS, BUTCHERS and GOLD SCALES, BEAMS, SPRING BALANCES, &c., &c. All of the best quality and at the lowest prices.

FAIRBANKS & BROWN,

118 MILK STREET, BOSTON.

RD

TO THE PUBLIC.

THE Compiler submits to the patronage of the Public THE NEW-FOUNDLAND ALMANACK *for the Year of Our Lord One Thousand Eight Hundred and Sixty-one.* Doubtless there are inaccuracies, nevertheless the undersigned flatters himself that the information contained in the foregoing pages may be depended upon for general correctness.

The undersigned is again indebted to his friend W. C. ST. JOHN, Esq., of Boston, for the valuable Astronomical information; he is also indebted to E. M. J. DELANEY, Esq., C. E., Meteorological Observer to the Smithsonian Institution, Washington, U.S.A., for the interesting "Meteorological Observations for the years 1857, '58, and '59, taken from the Colonial Building, St. John's, Newfoundland;" and to JAMES CAMPBELL, Esq., Master of the St. John's Nautical Academy, for the Tide Tables embraced in the Monthly Calendar; to the Heads of Departments and other gentlemen, he also tenders his acknowledgments for the facilities afforded in obtaining information:

THE Compiler is thankful for the patronage accorded to previous publications of THE ALMANACK, and he trusts that the present work will be regarded with still greater public favour and consideration; of his Boston patrons, whose advertising favours will be found in their proper places, he would also make suitable recognition.

JOSEPH WOODS.

St. John's, Nov., 1860.

RIALS
PLES,
ronze
itions
igher
who
ssort-
ROAD,
LLING
UNTER
CHERS
of the
OSTON.

CONTENTS.

Astronomical Phenomena for the year 1861	2
Attornies at Law	33
Abstract from Newfoundland Census of 1857	53
Advertisements	61
Board of Revenue	19
Board of Works	20
Boards of Road Commissioners	21
Board of Health	33
Barristers and Attornies of Supreme Court	33
Barristers and Attornies, Harbor Grace	33
Banks—Savings' Bank	31
Union Bank of Newfoundland	43
Commercial Bank of Newfoundland	43
Benevolent Institutions, Charitable Societies, &c.	58
Calendar	4
Chronological Eras	4
Calendar Pages—Moon's Phases, Sun's Rising and Setting at St. John's every day in the year, Sun's Declination, Equation of Time, High Water at St. John's every Morning and Afternoon, Memoranda, &c.	6—17
Colonial Secretary's Office	19
Customs Department	20
Court Houses and Keepers	23
Commissioners of Streets (Conception Bay)	23
Commissioners of the Poor	32
Commissioners for Reduction of Public Debt	32
Commissioners of Pilots and Rates of Pilotage	32
Clerks of the Peace	35
Coroners	35
Commercial Schools	36
Colonial Church and School Society and Schools	36
Convents	41
Clergy of different Denominations	40
Chamber of Commerce	43
Consolidated Account of Goods Imported in the year 1859 showing the quantities and duty	50
Colonial Governors	60
District Surgeons	23
Eclipses	2
Equinoxes	3
Executive Council	18

Fi
 Fi
 Fo
 Gc
 Ga
 Gr
 Ho
 Ha
 He
 Ins
 Jud
 Jus
 Joi
 Len
 Lat
 Leg
 Lig
 Law
 Lay
 Met
 Mas
 Mil
 Not
 Nav
 Not
 New
 New
 Plan
 Priv
 Post
 Polic
 Prot
 Quee
 Reve
 Rom
 Relig
 Reve
 Retu
 Retu
 Retu
 Roy
 Surve
 St. Jo
 St. Jo
 Supre

	Fixed and Moveable Festivals, Anniversaries, &c.	4
	Financial Secretary's Office	20
	Foreign Consuls	44
	Governor, Commander-in-Chief, and Vice-Admiral of	
	Newfoundland	18
	Gaols and Gaolers	23
	Grammar Schools	36
	House of Assembly	18
	Harbor Grace Free School	39
	Her Majesty's Chief Officers of State	59
	Insurance Companies—Fire, Life, and Marine	55
	Judicial Department	33
	Justices of the Peace	34
	Joint Stock Companies, Public Societies, &c.,	56
	Length of Seasons, &c.	3
	Latitude and Longitude of St. John's	4
	Legislative Council	18
	Light Houses and Lights	23
	Law Society Benchers	34
	Laymen Licensed to Celebrate Marriage	42
	Meteorological Observations for the years 1857, '58, and '59	5
	Masters-in-Chancery	34
	Military Establishment	44
	Note to Tide Tables	4
	Naval Establishment	45
	Notaries Public	44
	Newfoundland Church Society	41
	Newfoundland Tariff of Duties	47
	Planetary Movements	3
	Private Secretary to the Governor	18
	Post Office Department, Postal Routes and Rates of Postage	26
	Police	35
	Protestant Boards of Education	37
	Queen's Printer	33
	Revenue Department	20
	Roman Catholic Boards of Education	39
	Religious Tract and Book Society	43
	Revenue and Expenditure, 1859	46
	Return of Vessels of each Nation Entered and Cleared at	
	Ports in the Colony, 1859	51
	Return of Vessels Entered and Cleared at each Port in the	
	Colony, 1859	52
	Return of Vessels Entered from and Cleared for each	
	Country, at Ports in the Colony, 1859	52
	Royal Family of England	59
	Surveyor General's Office	19
	St. John's Hospital	23
	St. John's Lunatic Asylum	23
	Supreme Court	33

2
33
53
61
19
20
21
33
33
33
31
43
43
58
4
4

17
19
20
23
23
32
32
32
35
35
36
36
41
40
43

50
60
23

2
3
18

Students Members of the Law Society	33
Sheriffs	34
Stipendiary Magistrates	34
St. John's Academy	35
St. John's Wesleyan Academy	36
St. John's Presbyterian School	37
St. John's Orphan Asylum	39
St. John's Catholic College of St. Bonaventure	41
St. John's and Newfoundland Bible Society	43
Ships Owned and Registered in Newfoundland	49
Sterling value of Imports and Exports from and to each Country in 1859	51
Treasury Department	20
Terms of Supreme and Central Circuit Courts	34
Theological Institution (Church of England)	40
Tariff of Wharfage Charges at St. John's	54
Vice Admiralty Court	34
Volunteer Rifle Companies	45
Value of Imports and Exports for 1855, '56, '57, '58, '59	49
Wesleyan Methodist School and Agency Society and Schools	37
Young Men's Christian Association	43

33
34
34
35
36
37
39
41
43
49

51
20
34
40
54
34
45
49

37
43

