

1905

BOOK  
OF DESIGNS

FRANK P.  
MILBURN  
ARCHITECT

COLUMBIA S.C.

720  
163b

F. P. VENABLE



Library of  
The University of North Carolina

---

COLLECTION OF  
ART AND ARCHITECTURE

---

ENDOWED BY  
FRANK P. MILBURN

C 1 0 b

UNIVERSITY OF N C AT CHAPEL HILL



00030733270

**This book must not  
be taken from the  
Library building.**

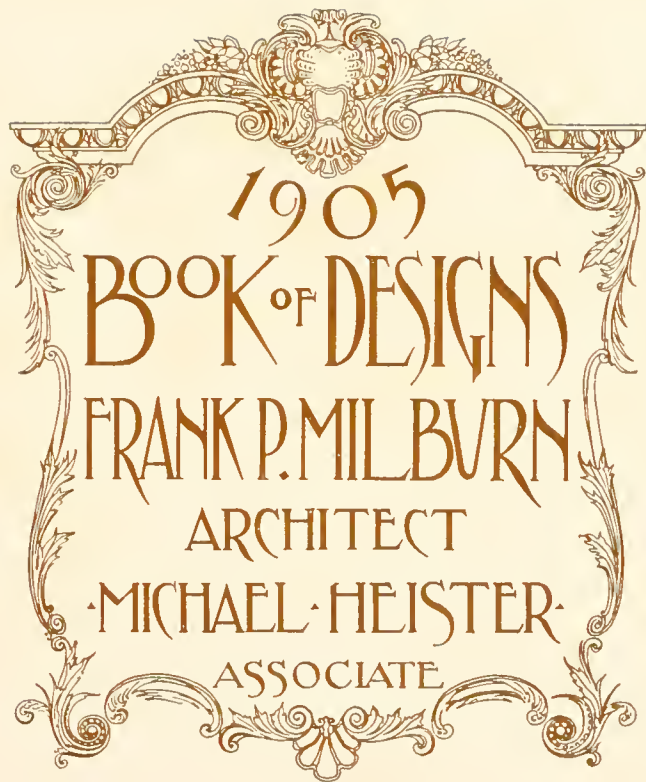
OCT 16 1970

SIVAS  
- OCT 16  
- 1970









1905

BOOK OF DESIGNS

FRANK P. MILBURN

ARCHITECT

MICHAEL HEISTER

ASSOCIATE

PRESSES OF  
THE STATE COMPANY  
COLUMBIA, S. C.





*Yours truly*  
*Frank G. Milburn*

## INTRODUCTION.

USEFUL information for those interested in the erection of artistic as well as durable buildings. Much money has been spent on large buildings, without considering progressive ideas of construction, or good architectural designing. One of the greatest points to be considered is the scientific, as well as the practical, manipulation of all raw material entering into these structures.

Long experience has taught me that in preparing the plans and specifications, and superintending the construction of buildings, nothing is too good in the way of material, and I spare no time or expense to secure the best results obtainable. You may have an elegant set of plans, and if the builder does not follow them, the owner is the loser, and the architect has to shoulder the blame. So many of our profession understand the theory but are unable to put the same into practical execution.

On the following pages of this brochure will be found suggestions and cuts of a few buildings executed in my office.

The charges of all reputable Architects are the same.

Yours respectfully,

FRANK P. MILBURN.

REFERENCES—Carolina National Bank, Columbia, S. C.  
Merchants and Farmers National Bank, Charlotte, N. C.  
First National Bank, Charlotte, N. C.  
Savannah Trust Company, Savannah, Ga.  
Palmetto Bank and Trust Company, Columbia, S. C.  
Southern Railway Company; Seaboard Air Line; Atlantic Coast Line; Georgia Railway Company.  
Bradstreet Mercantile Agency.  
R. G. Dun & Co., Mercantile Agency.



FRANK P. MILBURN,  
Architect.

DESIGN FOR KENTUCKY STATE HOUSE.



FRANK P. MILBURN,  
Architect.

GIBBES MEMORIAL ART GALLERY,  
During Construction.

Charleston, S. C.



FRANK P. MILBURN. ALTERNATE DESIGN FOR THE GIBBES MEMORIAL ART GALLERY.  
Architect.

Charleston, S. C.



FRANK P. MILBURN,  
Architect.

LOWNDES COUNTY COURT HOUSE.

Valdosta, Ga.



FRANK P. MILBURN,  
Architect.

COMMERCIAL BANK BUILDING.

Macon, Ga.



FRANK P. MILBURN,  
Architect.

BYNUM GYMNASIUM.  
University of North Carolina.

Chapel Hill, N. C.





FRANK P. MILBURN,  
Architect.

PROPOSED UNION STATION  
For the Atlantic Coast Line and Southern Railways.

Charleston, S. C.



FRANK P. MILBURN,  
Architect.

CLUB AND OFFICE BUILDING.



FRANK P. MILBURN,  
Architect

BOURBON COUNTY COURT HOUSE.  
During Construction.

Paris, Ky.



FRANK P. MILBURN,  
Architect.

DESIGN FOR UNION STATION  
For the Vicksburg, Shreveport and Pacific Railway.



FRANK P. MILBURN,  
Architect.

PIEDMONT SAVINGS BANK AND OFFICE BUILDING.

Winston, N. C.



FRANK P. MILBURN,  
Architect.

PROPOSED COUNTY COURT HOUSE.

La Follette, Tenn.



FRANK P. MILBURN,  
Architect

DESIGN FOR SAVANNAH CITY HALL.

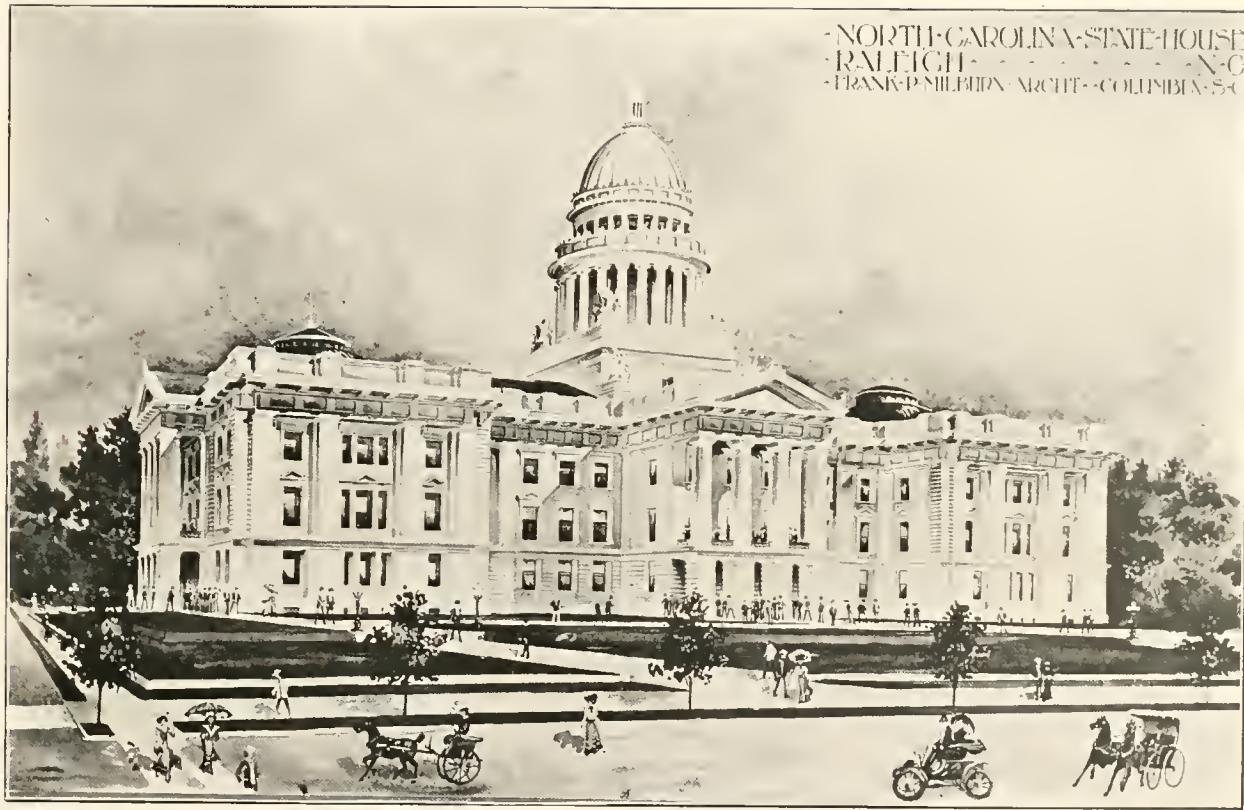


FRANK P. MILBURN,  
Architect.

DESIGN FOR UNION STATION.

Atlanta, Ga.





FRANK P. MILBURN,  
Architect.

NORTH CAROLINA STATE HOUSE  
As Remodeled.

Raleigh, N. C.



FRANK P. MILBURN,  
Architect.

OFFICE BUFFALO COTTON MILLS.

Union, S. C.



FRANK P. MILBURN,  
Architect.

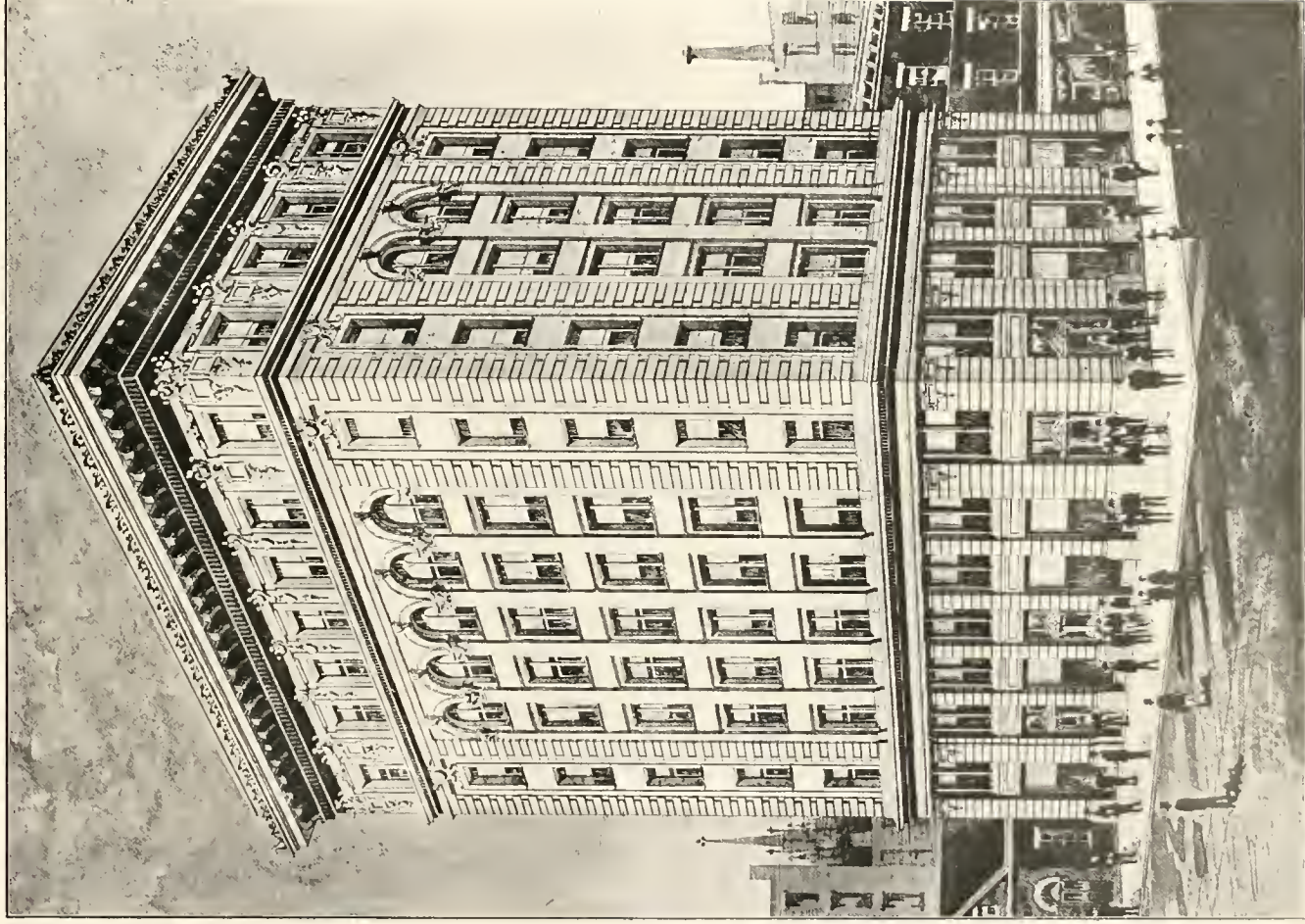
COTTON EXCHANGE AND BANK BUILDING.



FRANK P. MILBURN,  
Architect.

WILCOX COUNTY COURT HOUSE.

Abbeville, Ga.



FRANK P. MILBURN, ARCHITECT. A CONTEMPLATED OFFICE BUILDING.



FRANK P. MILBURN,  
Architect.

HOTEL BLANCHE.

Lake City, Fla.



FRANK P. MILBURN,  
Architect.

ALUMNI HALL,  
University of North Carolina.

Chapel Hill, N. C.



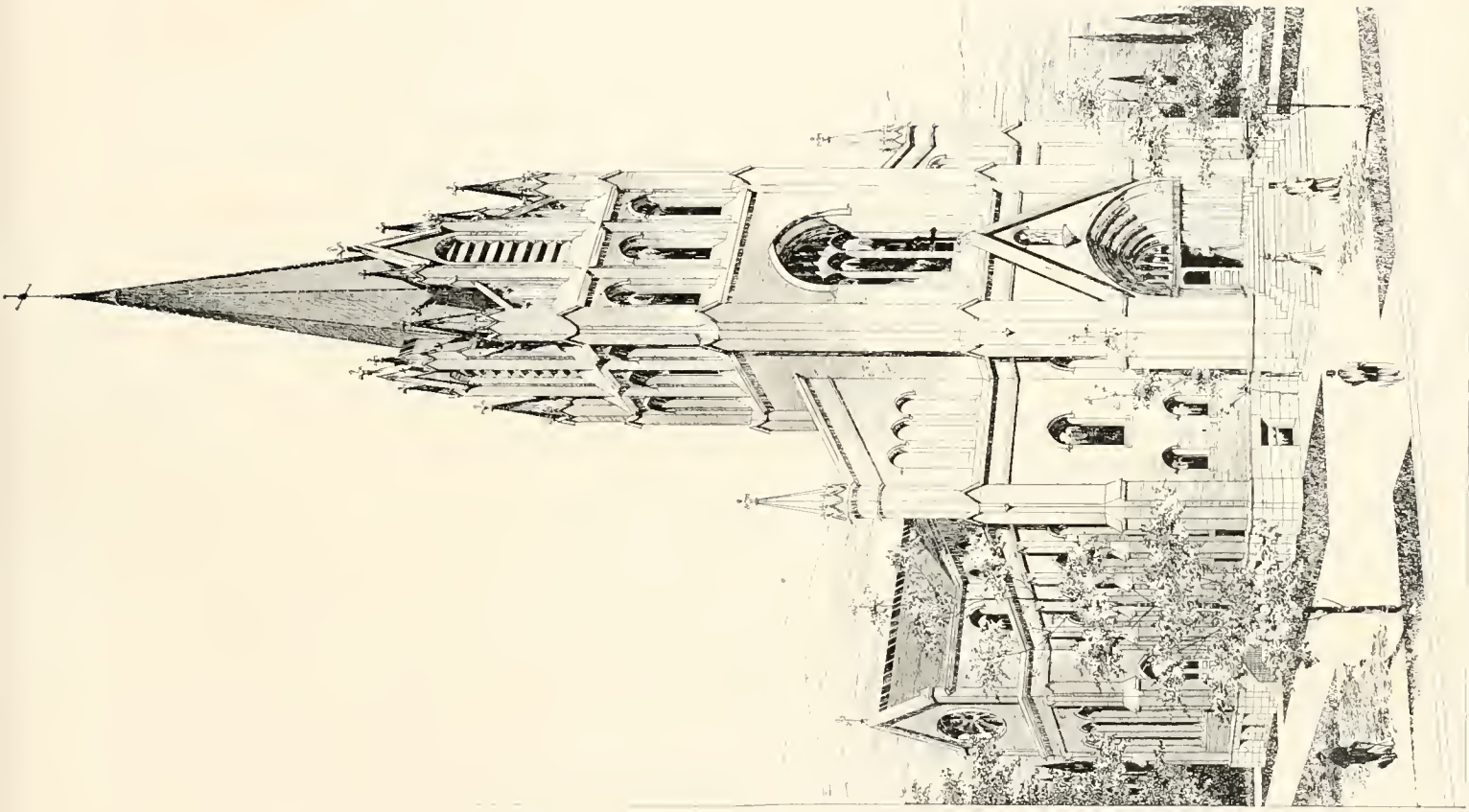
FRANK P. MILBURN,  
Architect.

### UNION STATION.

For Mobile and Ohio; New Orleans and Northeastern; Vicksburg, Shreveport and Pacific; and  
Alabama Great Southern Railways.

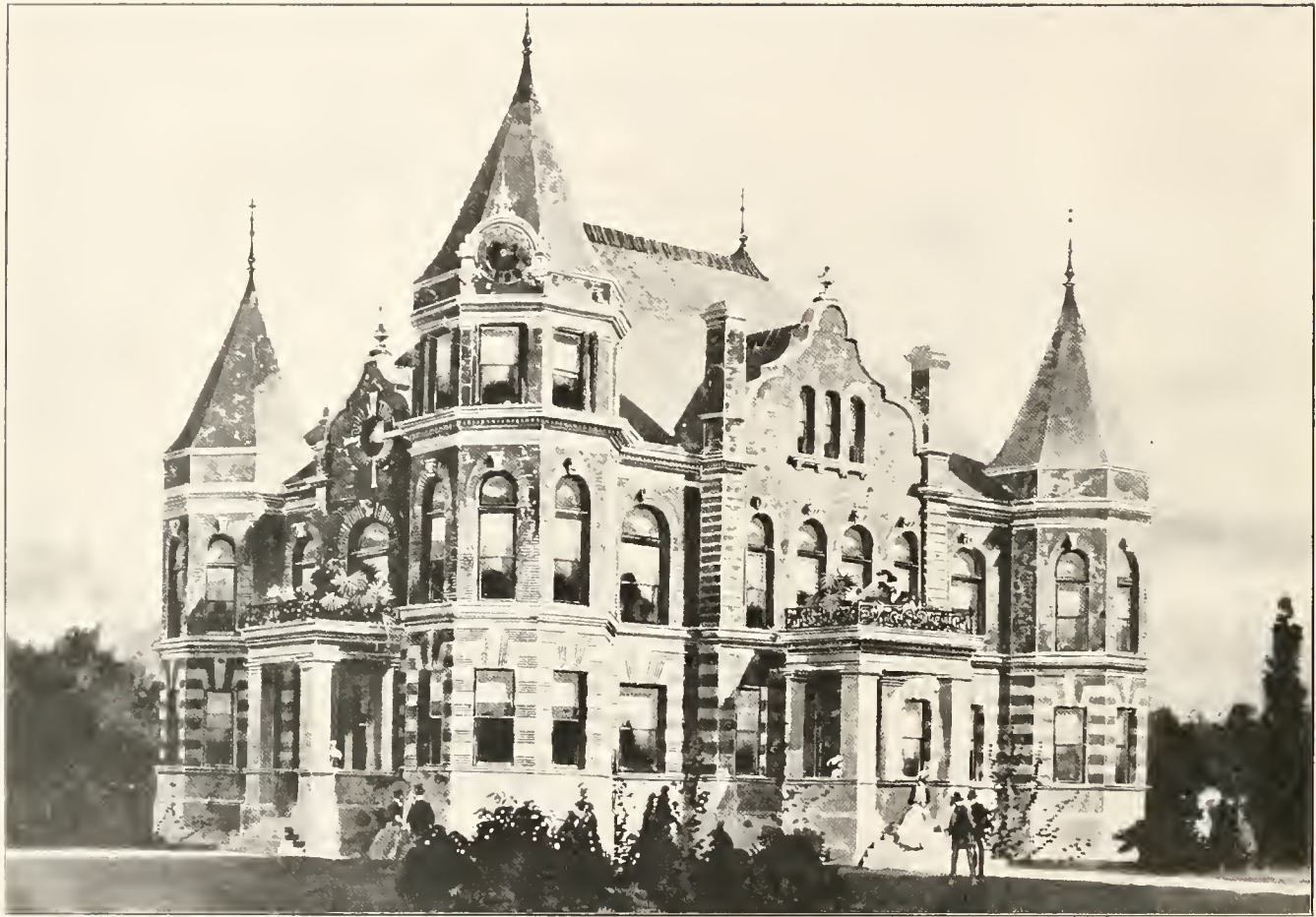
Meridian, Miss.





FRANK P. MILBURN. ST. PETER'S R. C. CHURCH.  
Architect.

Columbia, S. C.



FRANK P. MILBURN,  
Architect.

FULTON COUNTY COURT HOUSE.

Also built at Monticello, Ky.; Cadiz, Ky.; Salyersville, Ky.; Hinton, W. Va.;  
Winfield, W. Va. Cost \$15,000 to \$20,000.

Hickman, Ky.



FRANK P. MILBURN,  
Architect.

SOUTH CAROLINA STATE HOUSE.

Columbia, S. C.



FRANK P. MILBURN,  
Architect.

RESIDENCE FOR MR. B. P. WHITE JR.

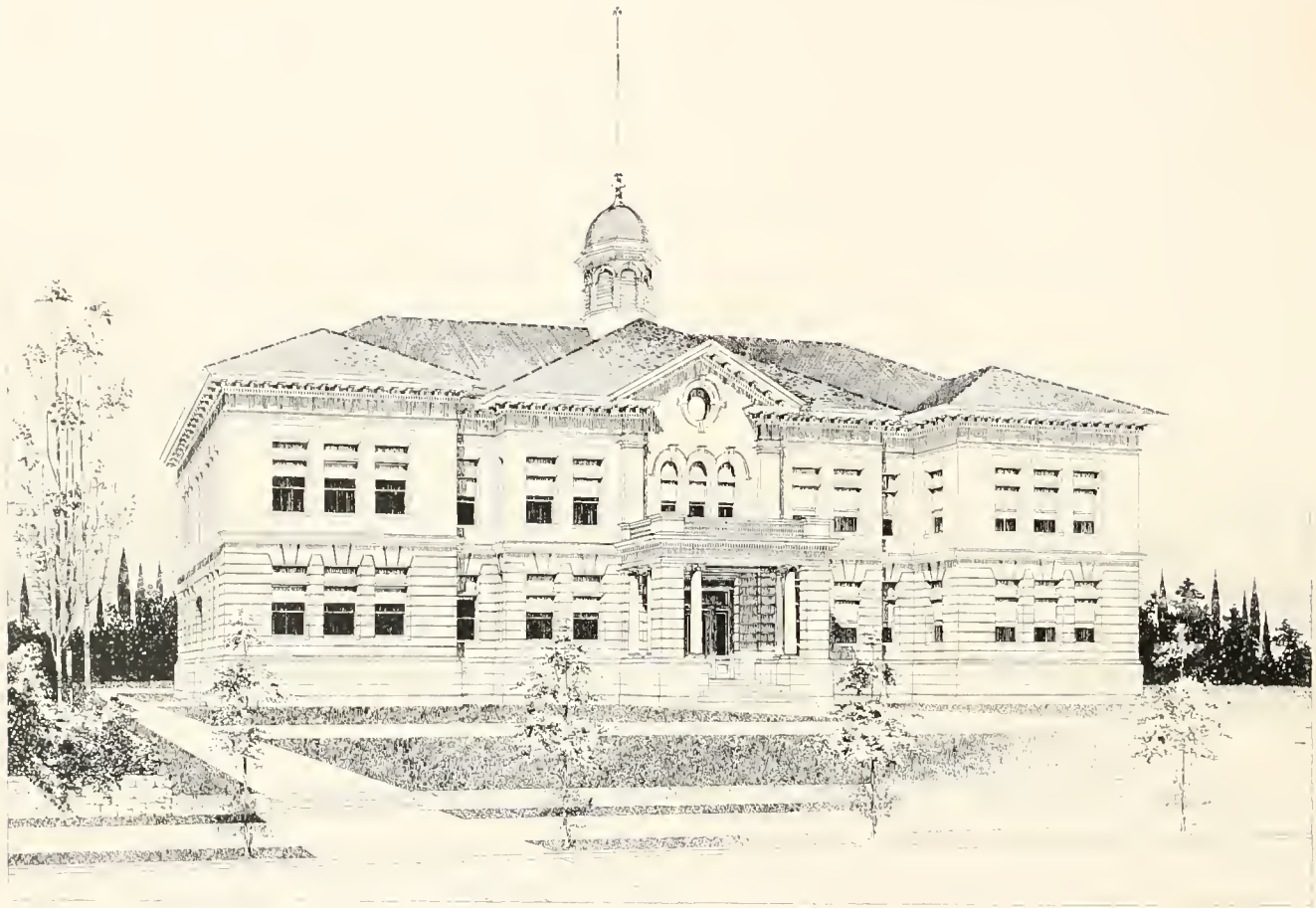
Winchester, Ky.



FRANK P. MILBURN,  
Architect.

UNION STATION  
For Seaboard Air Line, Norfolk and Western, and Southern Railways.

Durham, N. C.



FRANK P. MILBURN,  
Architect.

DESIGN FOR A SCHOOL BUILDING.



FRANK P. MILBURN,  
Architect.

UNION STATION  
For Southern Railway.

Asheville, N. C.



FRANK P. MILBURN,  
Architect.

MAIN BUILDING, NEWBERRY COLLEGE.

Newberry, S. C.





FRANK P. MILBURN,  
Architect.

UNION STATION  
For New Orleans and Northeastern, and Gulf and Ship Island Railways.

Hattiesburg, Miss.



FRANK P. MILBURN,  
Architect.

MARY ANN SMITH BUILDING,  
University of North Carolina,

Chapel Hill, N. C.



FRANK P. MILBURN,  
Architect.

CITY HALL AND THEATER.

Darlington, S. C.



FRANK P. MILBURN,  
Architect.

UNION STATION  
For the Atlantic Coast Line, Southern, and Georgia Railways.

Augusta, Ga.



FRANK P. MILBURN,  
Architect.

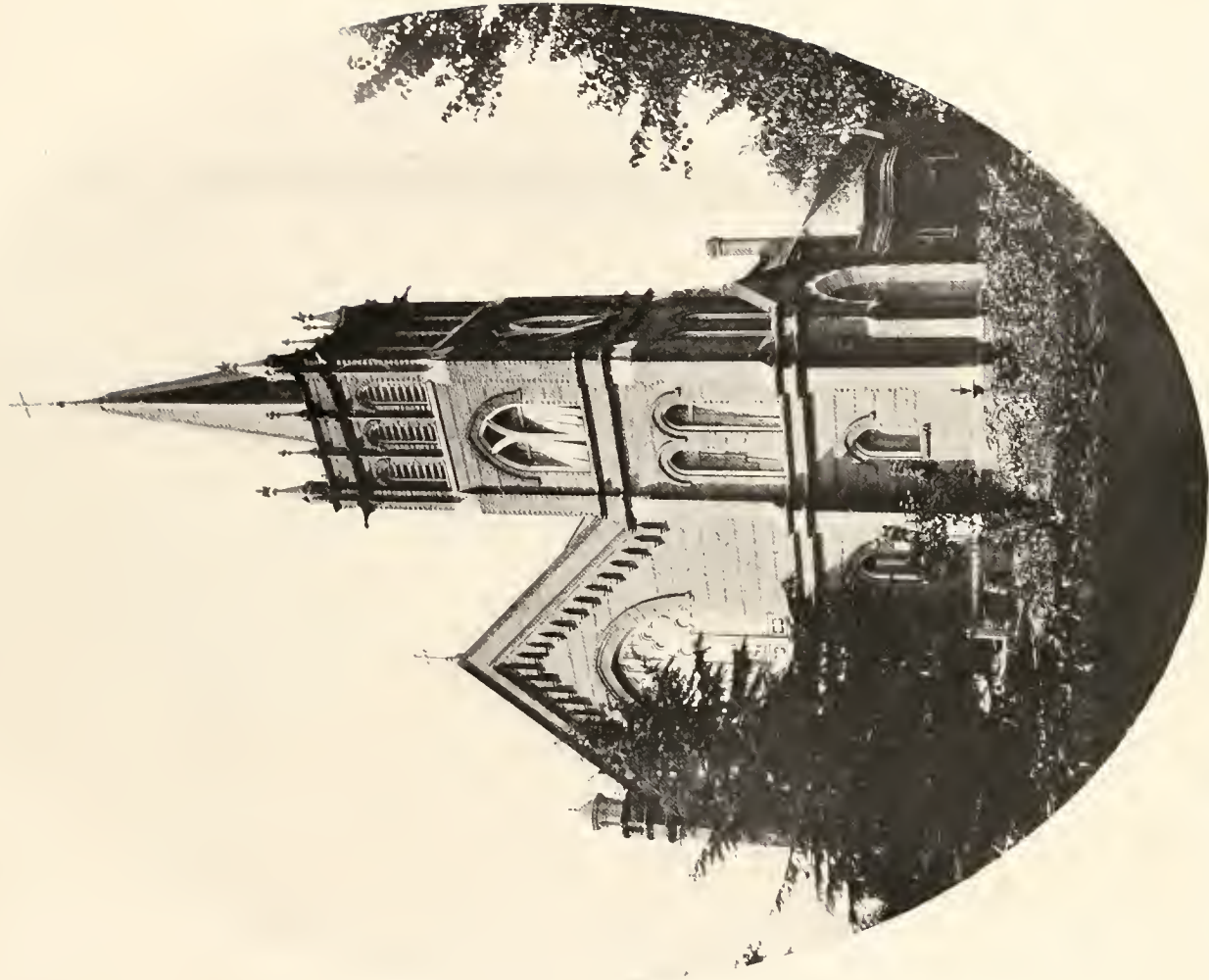
FLORIDA STATE HOUSE.

Tallahassee, Fla.



FRANK P. MILBURN,  
Architect.

A PUBLIC LIBRARY.



FRANK P. MILBURN,  
Architect.

ST. MARY'S R. C. CHURCH  
During Construction.

Greenville, S. C.



FRANK P. MILBURN,  
Architect.

RESIDENCE FOR MR. JAMES A. BENSON.

Washington, Ga.

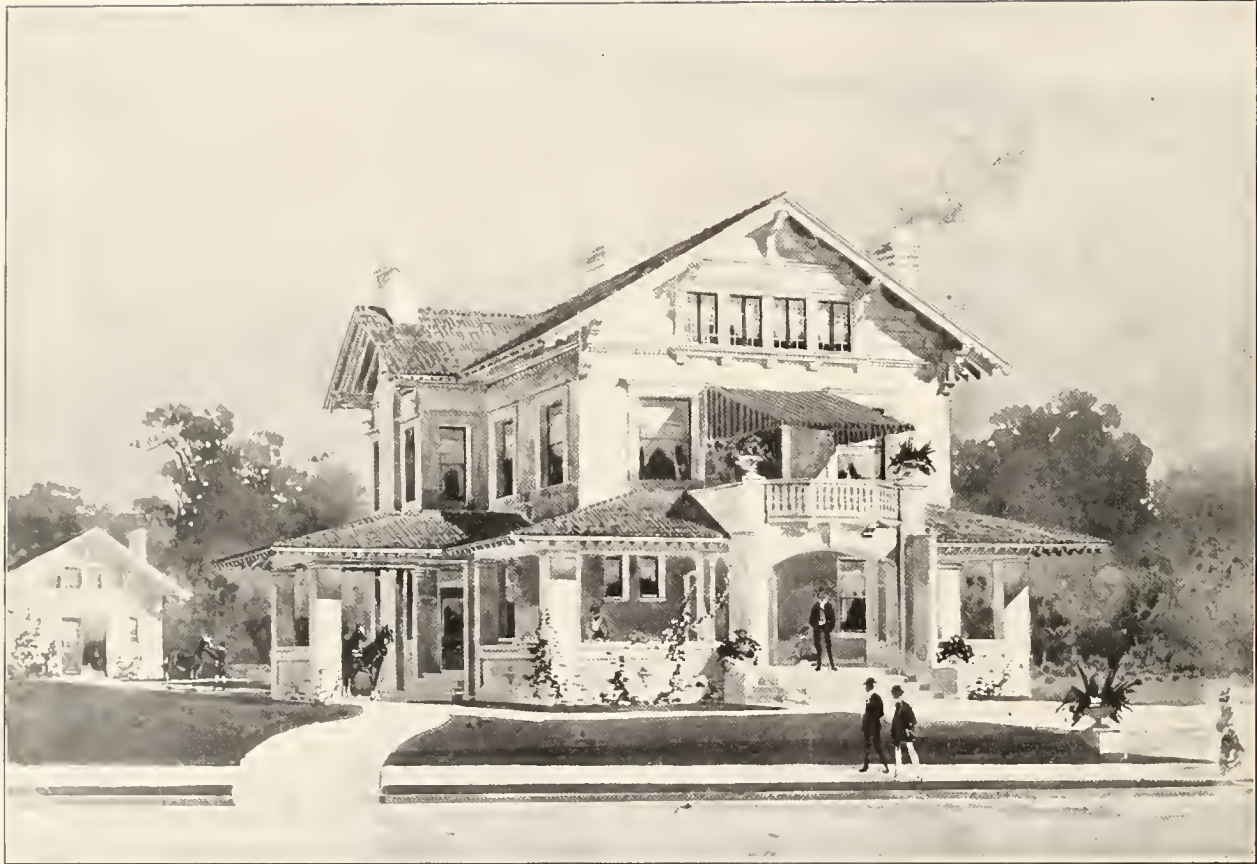




FRANK P. MILBURN,  
Architect.

Y. M. C. A. BUILDING,  
University of North Carolina.

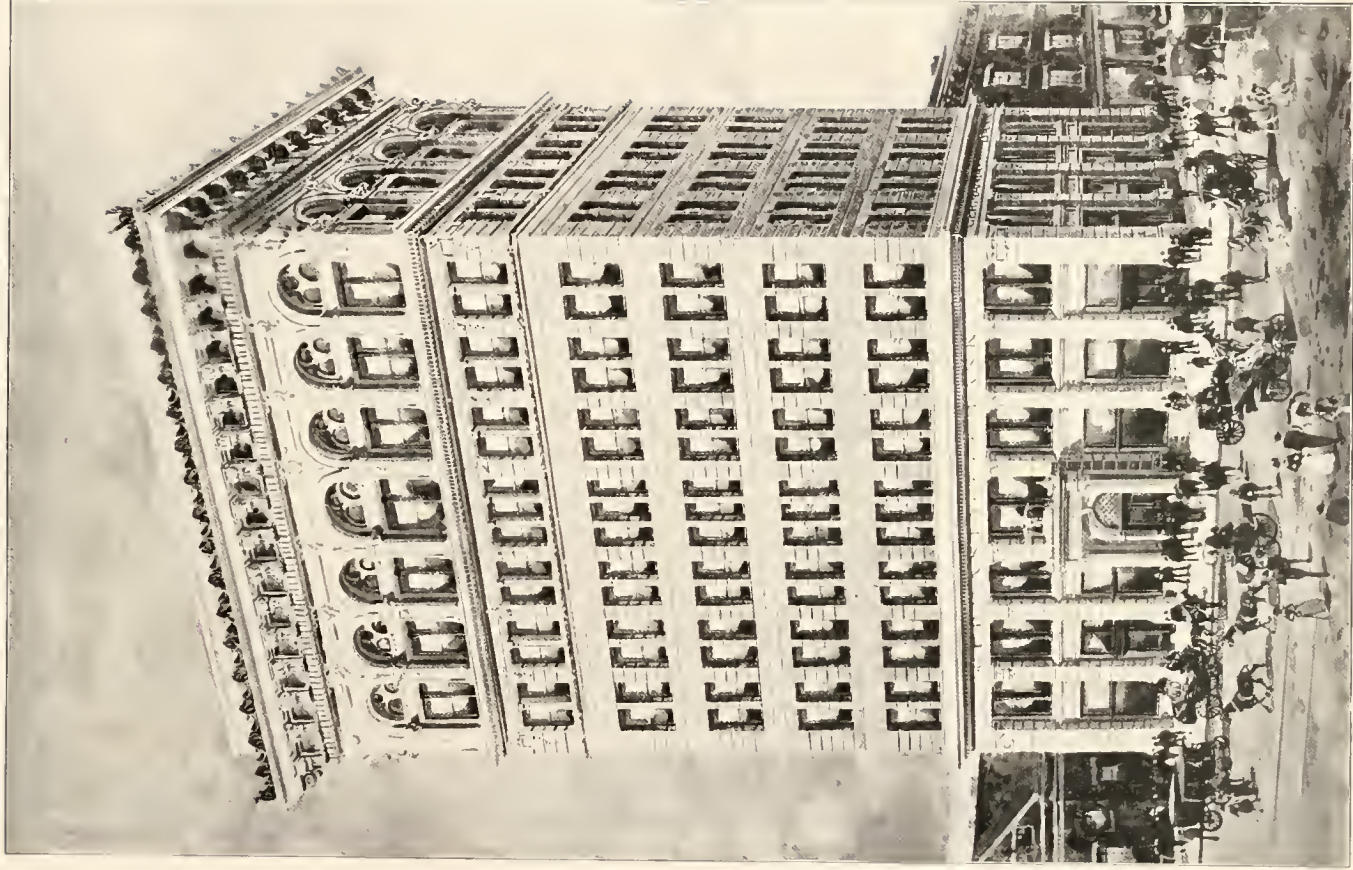
Chapel Hill, N. C.



FRANK P. MILBURN,  
Architect

RESIDENCE FOR MR. FRANK P. MILBURN.

Columbia, S. C.



DESIGN FOR GERMANIA BANK BUILDING.

FRANK P. MILBURN,  
Architect.

Savannah, Ga.



FRANK P. MILBURN,  
Architect.

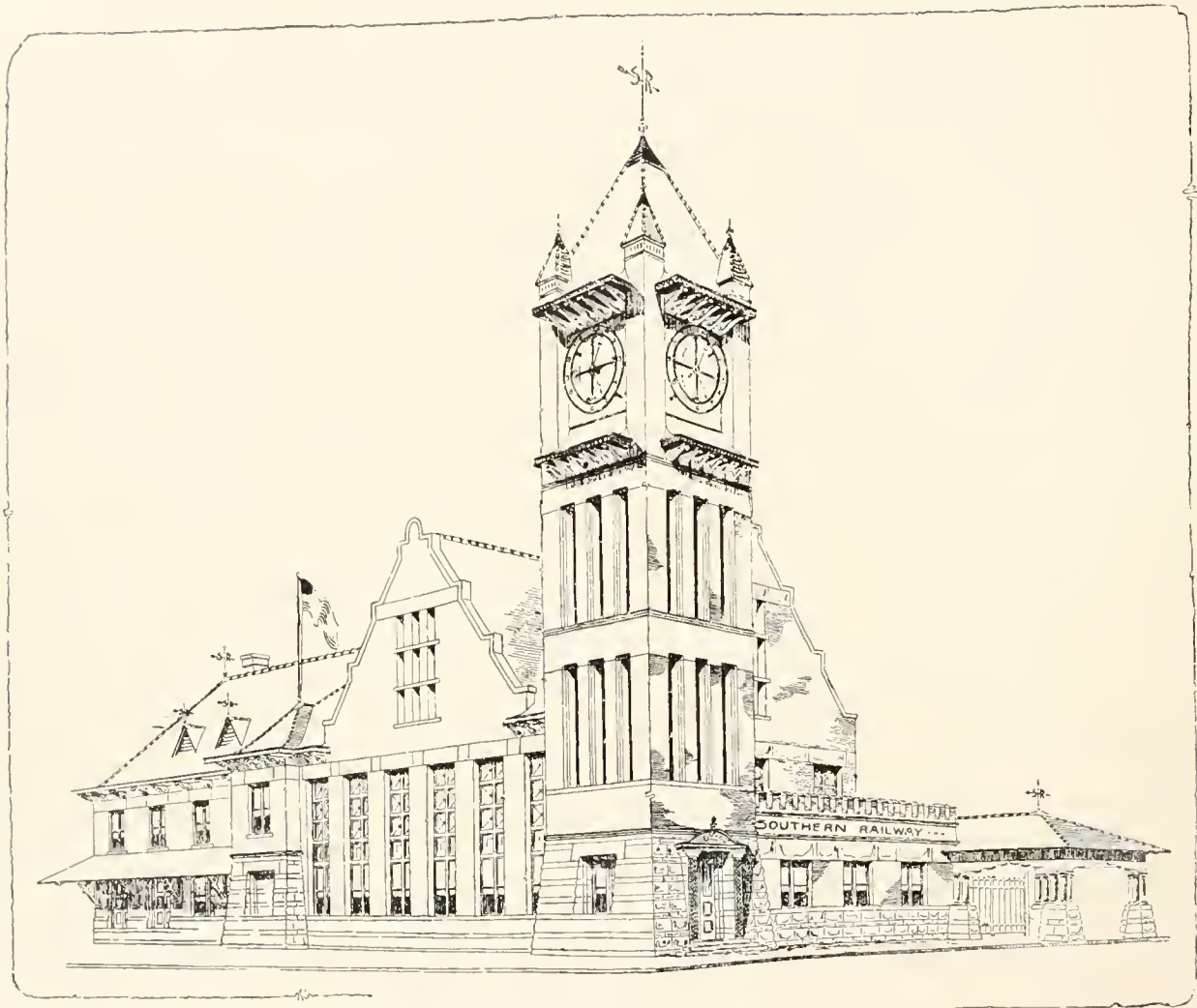
A CARNEGIE LIBRARY.



FRANK P. MILBURN,  
Architect.

UNION STATION  
For Southern Railway.

Greenville, S. C.



FRANK P. MILBURN,  
Architect.

STATION FOR SOUTHERN RAILWAY.

Richmond, Va.



FRANK P. MILBURN,  
Architect.

COUNTY COURT HOUSE.

Abbeville, Ga.

Frank P. Milburn, ARCHITECT.  
COLUMBIA, S. C.



FRANK P. MILBURN,  
Architect.

COLUMBIA COUNTY COURT HOUSE.

Lake City, Fla.





FRANK P. MILBURN,  
Architect.

DESIGN FOR MOTHER HOUSE  
For the Sisters of Mercy.

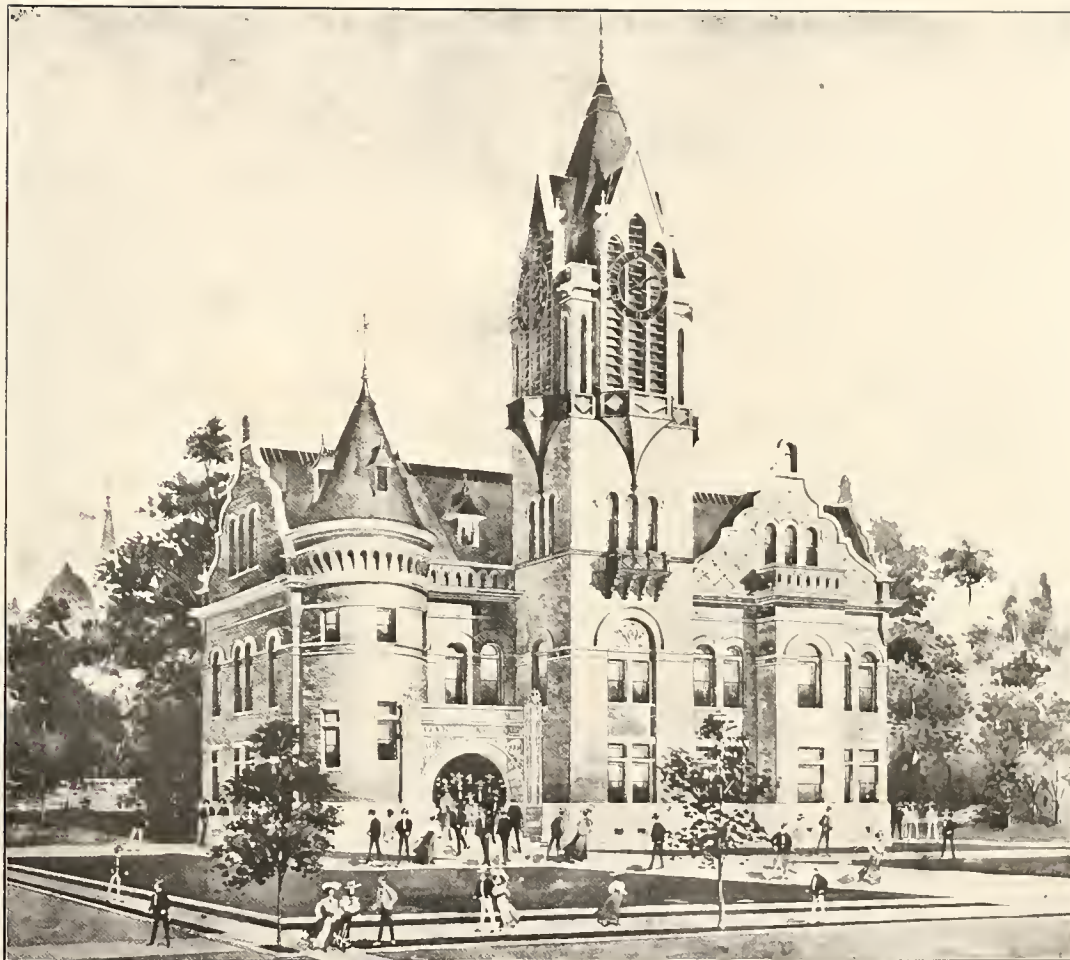
Charleston, S. C.



FRANK P. MILBURN,  
Architect.

RESIDENCE FOR MR. H. H. EVANS.

Newberry, S. C.



FRANK P. MILBURN,  
Architect.

WILKES COUNTY COURT HOUSE.

Washington, Ga.



FRANK P. MILPURN,  
Architect.

M. E. CHURCH.

Washington, Ga.



FRANK P. MILBURN,  
Architect.

DESIGN FOR TERMINAL STATION.

New Orleans, La.



FRANK P. MILBURN,  
Architect.

A JAILER'S RESIDENCE AND JAIL.



FRANK P. MILBURN,  
Architect.

UNION STATION  
For the Norfolk and Western and Southern Railways.

Winston, N. C.



FRANK P. MILBURN,  
Architect.

GOOD SAMARITAN HOME.

Columbia, S. C.





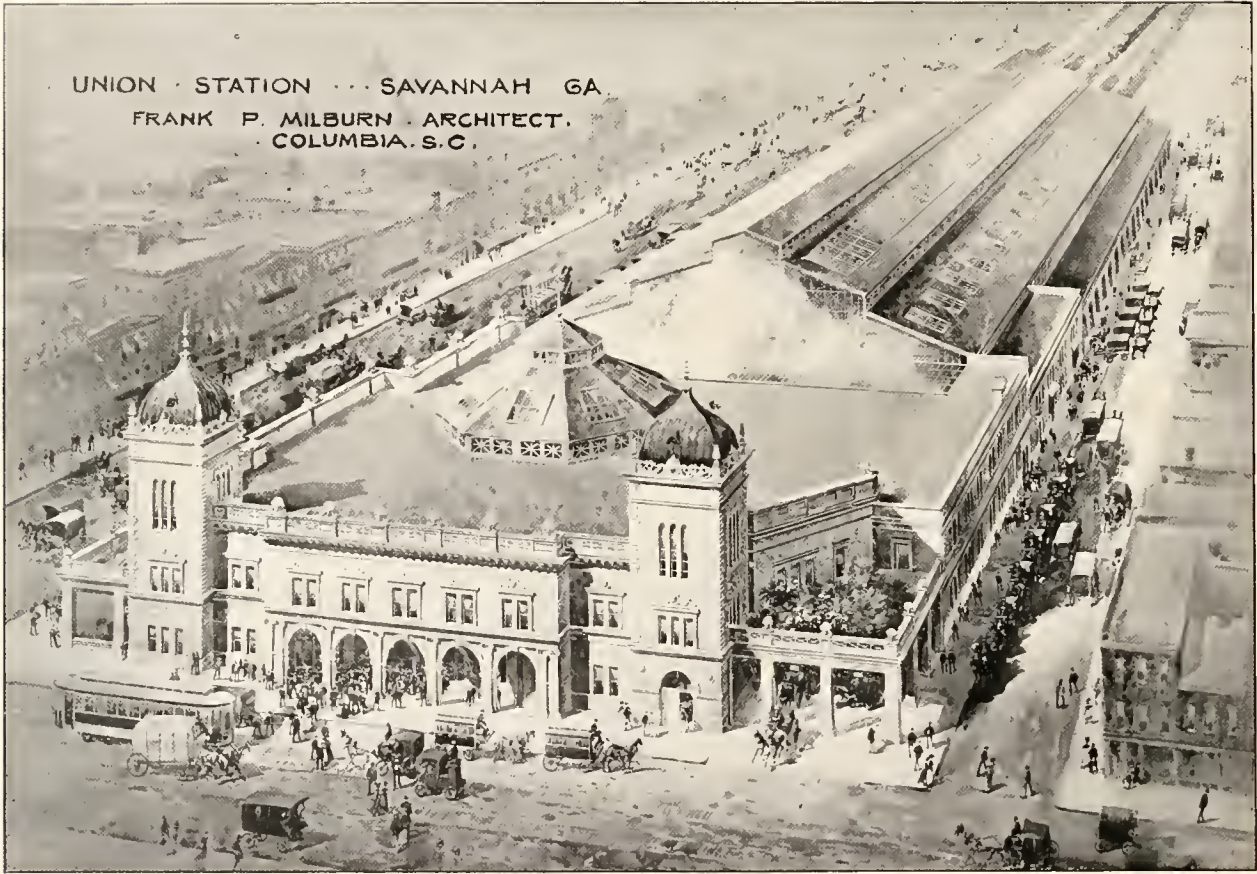
FRANK P. MILBURN,  
Architect.

MECKLENBURG COUNTY COURT HOUSE.

Charlotte, N. C.

UNION STATION ··· SAVANNAH GA.

FRANK P. MILBURN · ARCHITECT.  
· COLUMBIA, S. C.



FRANK P. MILBURN,  
Architect.

UNION STATION  
For the Atlantic Coast Line, Seaboard Air Line, and Southern Railways.

Savannah, Ga.



FRANK P. MILBURN,  
Architect.

STEEL TRAIN SHED, UNION STATION.

Savannah, Ga.



ANDERSON COUNTY COURT HOUSE.

FRANK P. MILBURN,  
Architect.

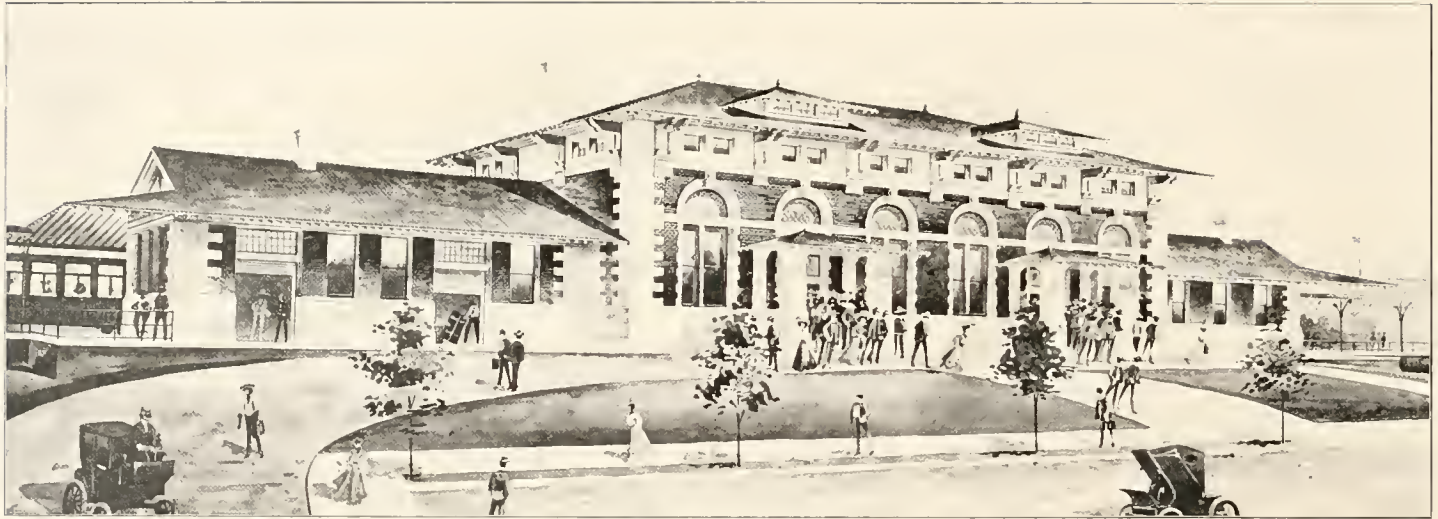
Anderson, S. C.



FRANK P. MILBURN,  
Architect.

A. R. P. CHURCH.

Newberry, S. C.



FRANK P. MILBURN,  
Architect

UNION STATION  
For the Vicksburg, Shreveport and Pacific Railway.

Monroe, La.



FRANK P. MILBURN,  
Architect.

A PRIVATE TRAINING SCHOOL.



FRANK P. MILBURN,  
Architect.

WISE COUNTY COURT HOUSE.

Wise, Va.



Union Station --  
Knoxville -- Tenn --

FRANK P. MILBURN, ARCHITECT,  
COLUMBIA -- S.C.



FRANK P. MILBURN,  
Architect.

UNION STATION  
For the Southern Railway.

Knoxville, Tenn.



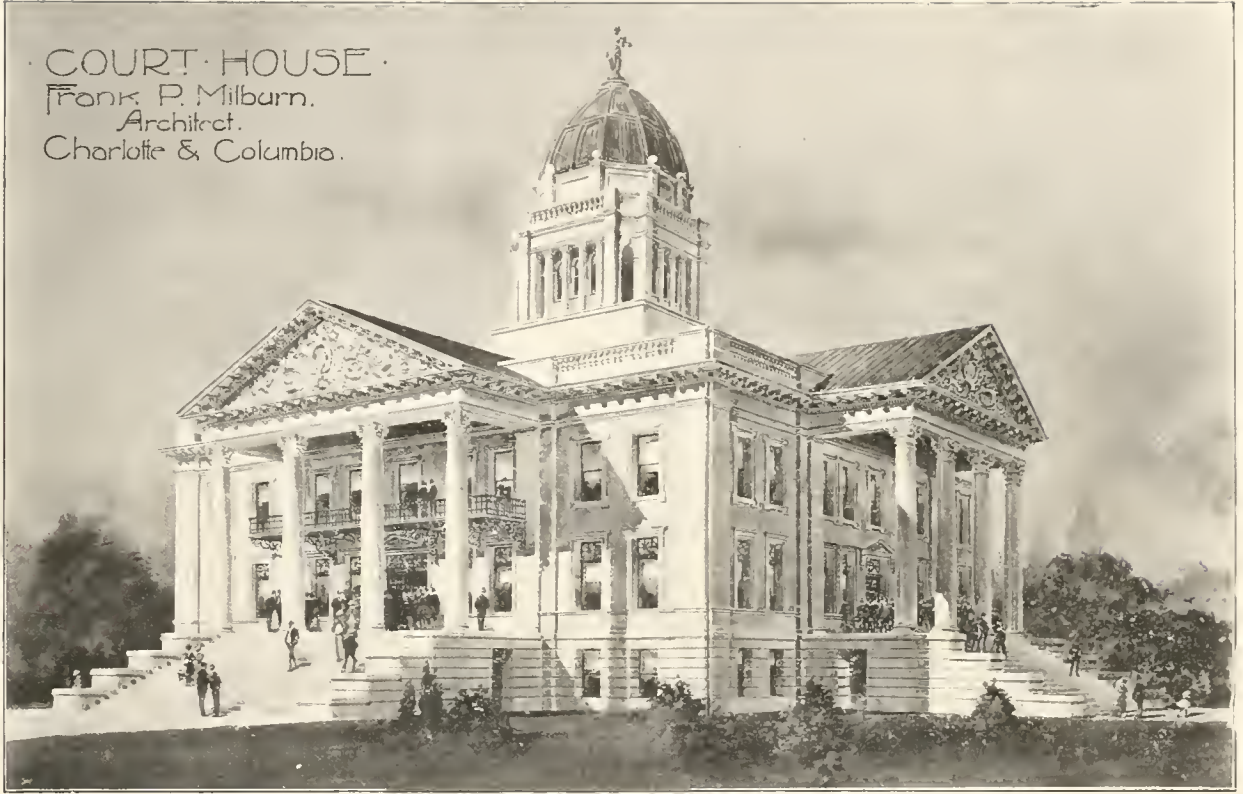
FRANK P. MILBURN,  
Architect.

STATION FOR THE SOUTHERN RAILWAY.

Rome, Ga.

COURT HOUSE

Frank P. Milburn,  
Architect.  
Charlotte & Columbia.



FRANK P. MILBURN,  
Architect.

WYTHE COUNTY COURT HOUSE.

Wytheville, Va.

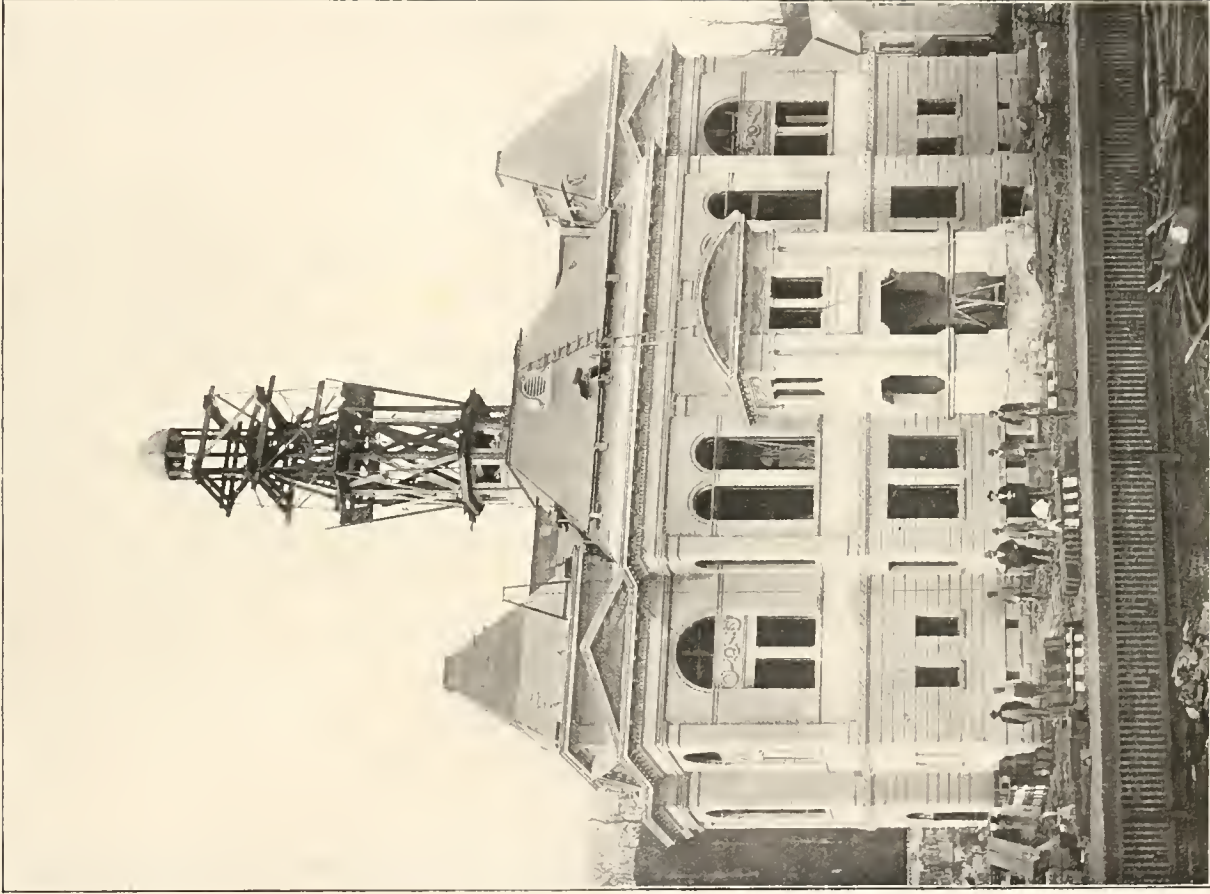


THOMSON AUDITORIUM.

FRANK P. MILBURN,  
Architect.

Built by the City for the Confederate Veterans' Reunion, 1899. Erected in  
ninety days. Seating capacity, 10,000.

Charleston, S. C.



FRANK P. MILBURN,  
Architect.

MINGO COUNTY COURT HOUSE.  
During Construction.

Williamson, W. Va.



FRANK P. MILBURN,  
Architect.

FORSYTHE COUNTY COURT HOUSE.

Winston, N. C.



FRANK P. MILBURN,  
Architect.

UNION STATION  
For the Louisville and Nashville and Southern Railways.

Decatur, Ala.



FRANK P. MILBURN,  
Architect.

FITTING SCHOOL, WOFFORD COLLEGE.

Spartanburg, S. C.





FRANK P. MILBURN,  
Architect.

UNION STATION  
For the Atlantic Coast Line and Southern Railways.

Columbia, S. C.



FRANK P. MILBURN,  
Architect

FIRST BAPTIST CHURCH.

Winston, N. C.



OFFICE BUILDING FOR THE SOUTHERN LOAN AND TRUST CO.  
FRANK P. MILBURN,  
Architect

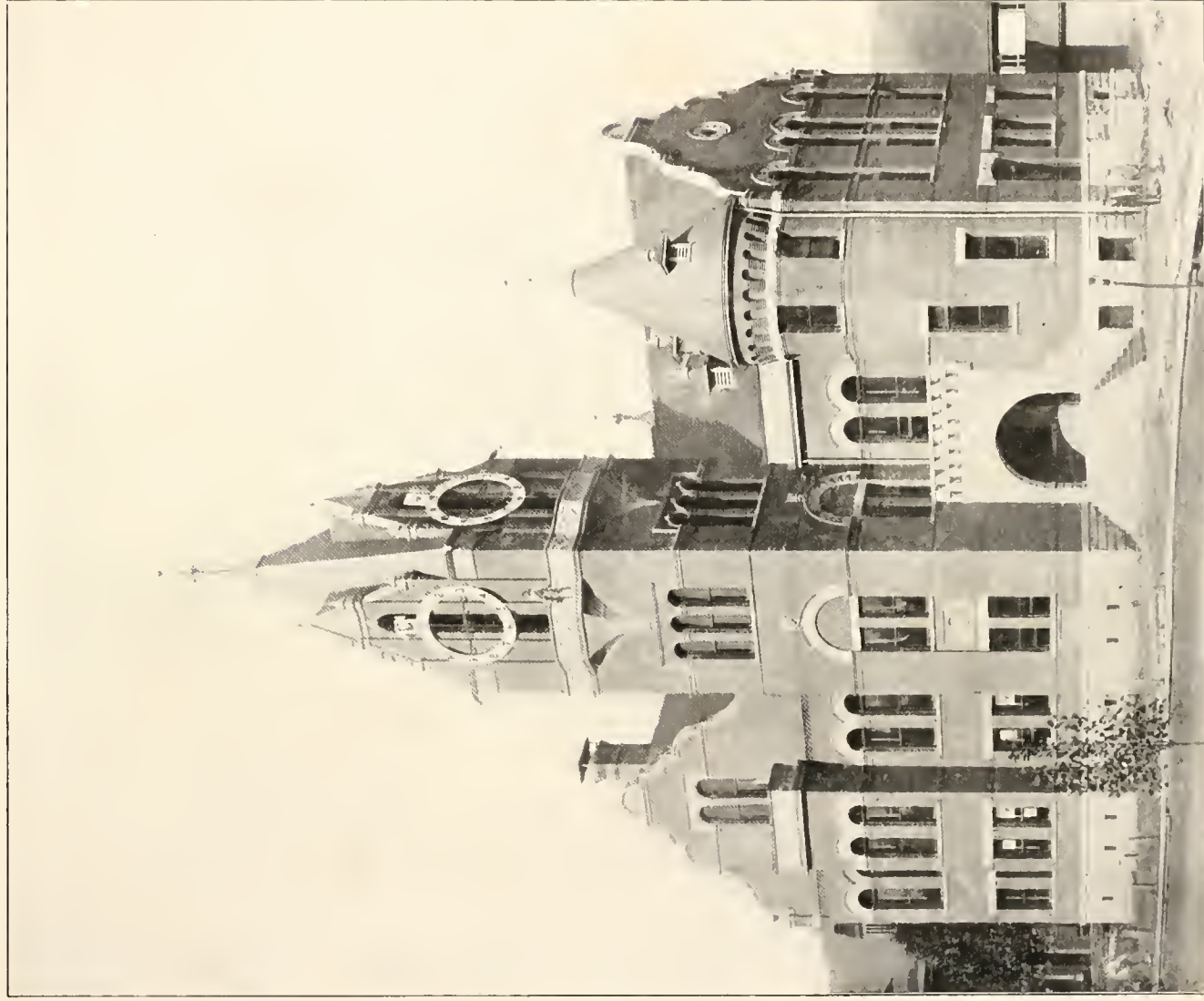
Greensboro, N. C.



FRANK P. MILBURN,  
Architect.

PIEDMONT OFFICE BUILDING.

Charlotte, N. C.



FRANK P. MILBURN,  
Architect

TUCKER COUNTY COURT HOUSE.

Parsons, W. Va.



FRANK P. MILBURN,  
Architect.

SOUTHERN RAILWAY STATION.

Danville, Va.



PLEASANTS COUNTY COURT HOUSE.

FRANK P. MILBURN,  
Architect.

St. Marys, W. Va.



FRANK P. MILBURN,  
Architect.

CAPITAL CLUB.

Raleigh, N. C.





FRANK P. MILBURN,  
Architect.

DORMITORY, BLIND SCHOOL.

Raleigh, N. C.

STATE OF SOUTH CAROLINA,  
EXECUTIVE CHAMBER.

COLUMBIA, S. C., December 29, 1902.

MR. FRANK P. MILBURN,  
Columbia, S. C.

Dear Sir:

It gives me a great deal of pleasure to recommend you to anyone who desires the services of an Architect. Your work at Winthrop College, the City Hall and the State Capitol shows that you are master of your profession.

Yours very truly,

M. B. McSWEENEY, Governor.

COUNTY JUDGE,  
FULTON COUNTY, KENTUCKY.

HICKMAN, KY., January 28, 1904.

To Whom it May Concern:

The Fulton County Court appointed Frank P. Milburn as Architect for the new Court House, recently completed. His plans were satisfactory and our people feel that he has done his duty as Superintendent of the work. We have the best arranged and constructed building in Western Kentucky. All our people are well pleased and there are no complaints from any source. I take pleasure in recommending Mr. Milburn to anyone in need of an Architect, as a first-class man—knowing that they will not be disappointed should they secure his services.

Yours very truly,

H. M. KEARBY,

Judge of Fulton County Court.

COMMISSIONERS OF ROADS AND REVENUES,  
WILCOX COUNTY, GA.

ABBEVILLE, GA., July 5, 1904.

To Whom it May Concern:

This is to certify that the County Commissioners of Wilcox County, Georgia, have accepted the plans and specifications for the new \$52,000 Court House as submitted by Architect Frank P. Milburn. The plans are complete and the building is now finished to the entire satisfaction of our people. We found Mr. Milburn honest, upright, and prompt in all our dealings with him, and we recommend him to anyone in need of the services of an Architect.

GEORGE F. McLEOD, Chairman.

J. B. MITCHELL.

T. M. PARSONS.

## FLORIDA CAPITOL COMMISSION.

At a meeting of the Capitol Commission held in the Executive Office, Tallahassee, Fla., December 18, 1902, the following resolutions were passed:

*Resolved*, That the Capitol Commission of the State of Florida extend its thanks to Mr. Frank P. Milburn and express its appreciation of his efficient services in the making of plans and specifications and supervision of the work of improving the Capitol. His work has been of inestimable value in connection with the building, and he is heartily commended to the public for work of a similar nature."

W. S. JENNINGS,  
Governor of Florida and Chairman of the Capitol Commission.

## COUNTY COMMISSIONERS, COLUMBIA COUNTY, FLORIDA.

LAKE CITY, FLA., September 1, 1902.

MR. FRANK P. MILBURN, Architect,  
Columbia, S. C.

Dear Sir:

Believing that true merit should have its reward, we, the County Commissioners of Columbia County, Florida, desire to say to you that our new Court House, just completed and accepted, is the pride of our entire people. It has been remarked by many, among whom were our Governor and State Comptroller, that our building, in architectural design, attractiveness, comfort and convenience, has no equal in Florida. We are *perfectly satisfied*. And you, as the Architect of this building, have the gratitude of our whole people, and you should feel proud of your handiwork.

With the best of wishes for your future continued success, we are,

Yours very truly,

COUNTY COMMISSIONERS of Columbia County, Florida.  
By R. T. BEZZER, Chairman.

## BOARD OF SUPERVISORS, WYTHE COUNTY.

WYTHEVILLE, VA., November 28, 1901.  
*Resolved*, That the thanks of the Board of Commissioners of Wythe County be tendered to Mr. Frank P. Milburn, Architect, of Columbia, S. C., for his untiring interest in securing for Wythe County a creditable Court House, both in plan and construction, of which the County may be justly proud."  
(Signed) A. L. PORTER, Chairman.

## COMMISSIONERS OF ROADS AND REVENUES, WILKES COUNTY, GA.

WASHINGTON, GA., July 11, 1904.

To Whom it May Concern, Greeting:

I, the undersigned, Commissioner for Wilkes County, Georgia, certify that Frank P. Milburn was the Architect for our new Court House, which cost \$45,000. He has rendered valuable services to this County in protecting their interests. I found his plans complete, and did not have one cent of extras, above the contract price. I found him to be fair, honest, and prompt in the discharge of his duties.

I do not give this recommendation as a matter of form, but I believe true merit warrants it.

C. E. SMITH, Commissioner.

As Ordinary of Wilkes County, I fully indorse the above.  
W. S. LANE, Ordinary Wilkes Co., Ga.

## BOARD OF COUNTY COMMISSIONERS.

CHARLOTTE, N. C., October 16, 1898.

To Whom it May Concern:

This is to certify that the Building Committee of the new Court House of Charlotte, N. C., adopted plans submitted by Frank P. Milburn, Architect, for our new Court House, the same being in their judgment the best design submitted, from more than twenty Architects.

During the construction of our building, we found Mr. Milburn a practical man, and his plans have given us entire satisfaction.  
Yours truly,  
(Signed) JNO. R. ERWIN, Chairman.

## OFFICE W. P. SNELGROVE, COUNTY SUPERVISOR.

MR. FRANK P. MILBURN,  
Charlotte, N. C.

ANDERSON, S. C., August 1, 1893.

Dear Sir:

At a meeting of our Building Committee today, which perhaps will be the last held, it was unanimously agreed that we should not adjourn without expressing our entire satisfaction with you as a man who will carry out to the letter his contracts. You have intelligently and conscientiously discharged every duty and obligation imposed upon you by reason of being the Architect of the new Court House and Jail for Anderson County.

The Court House is given up to be the handsomest County building in the State, and our people all laud their praises of both the Jail and Court House.

There has not been a hitch between the Building Committee and the Contractors, and both buildings have been completed according to the plans and specifications furnished by you, and this speaks worlds for the Architect.

In addition, we want to say that you have made friends of this entire committee, and that you are at liberty to refer at any and all times to either of us. Respectfully,

(Signed) W. P. SNELGROVE, Chairman.

" J. D. MAXWELL, Secretary.

" JOHN H. JONES.

" J. F. CLARDY.

I hereby certify that the signatures to the above instrument of writing are genuine. Witness my hand and official seal this August 12, 1898.  
(Signed) JNO. C. WATKINS, Clerk Court, C. P. & G. S.

# BAILEY BROS., TOBACCO MANUFACTURERS.

WINSTON, N. C., December 4, 1896.

To Whom Concerned:

Mr. Frank P. Milburn was our Architect for the new Court House in this County, which cost \$60,000. His plans have worked out nicely, and we found him to be a practical superintendent in every respect. Our building is considered one of the best in the State and our people are well pleased. We with pleasure recommend Mr. Milburn to anyone in need of an Architect, as an honest, capable man, worthy of the confidence of anyone.

[SEAL.]

J. F. MILLER, C. B. B.

M. D. BAILEY, Chairman,  
R. S. LINVILLE,  
E. W. HAUSER,  
Com. of Forsythe Co., N. C.

## G. B. BINGHAM,

JUDGE OF THE TRIGG COUNTY COURT.

CADIZ, KY., November 11, 1895.

To Whom it may Concern:

We, the undersigned Commissioners of Trigg County, in the matter of erecting a new Court House for said County, do hereby certify that Mr. Frank P. Milburn was our Architect (having selected his plans from quite a number submitted to us), and as such was highly satisfactory. We cheerfully commend him as worthy of the consideration of any who may desire the services of a good man, a good Architect, and everything the term implies. We have a first-class building, and the best one we ever saw for the cost.

(Signed)

G. B. BINGHAM,  
JNO. D. SHAW,  
J. M. TAYLOR,  
R. A. BURNETT,  
Committee.

[SEAL.]

T. K. GRASTY, Trigg County Clerk.

## COUNTY CLERK'S OFFICE.

WELCH, W. VA., May 4, 1895.

Know all Men by these Presents:

That we selected Frank P. Milburn as the Architect of our new Court House and Jail, having had plans from twelve different Architects to select from. Both buildings are now complete, at a cost to our County of \$54,000. They are a monument to our County, and a credit to the Architect. We are well pleased and satisfied with same, and do not hesitate to recommend Mr. Milburn to County officers in need of his services as a man worthy and well qualified in his profession.

(Signed)

T. K. FOTEN,  
W. C. DANIEL,  
H. C. FLESEER.

[SEAL.]

W. BURBRIDGE PAYNE, C. C. C. C.











