

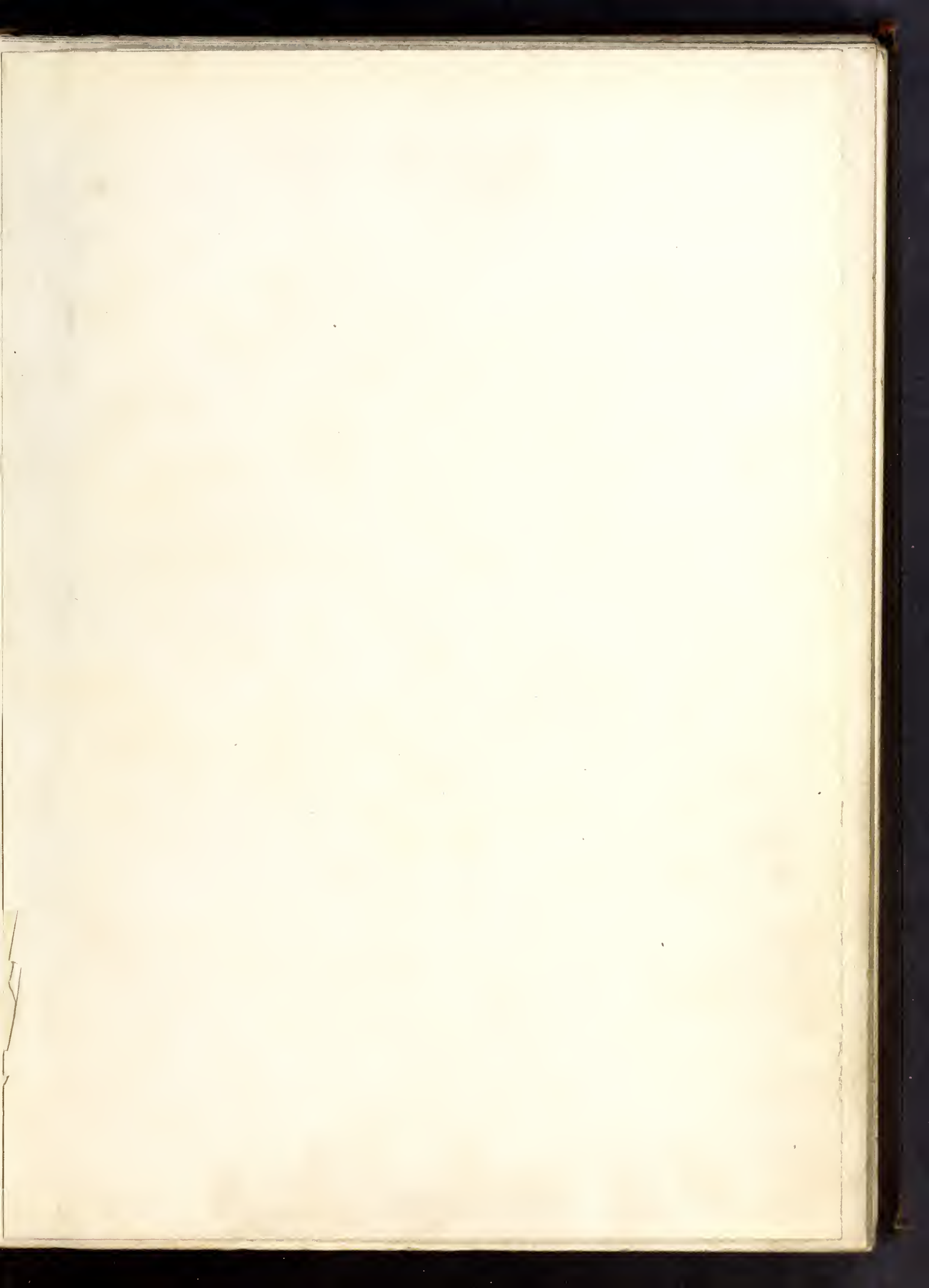
PUBLIC LIBRARY
of Charlotte and Mecklenburg County





(2)









The EDELWEISS

Published by the
SENIOR CLASS of
Queens College
CHARLOTTE, N. C.



VOL. 12
Nineteen Hundred and Twenty-one

(3)



UNIVERSITY LIBRARY
CHARLOTTE, N. C.



THE
BEGINNING.





The Edelweiss 1921

The Edelweiss

*“Upon the Alpine Mountains
Half buried in the snow,
In wonderful profusion
This flower is seen to grow—
The Edelweiss.*

*“As white as are the snow flakes,
And shining like a star;
The emblem of the noblest,
Most pure and true you are—
The Edelweiss.*

*“And you, our little year book,
In story, rhyme, and jest,
Express our hardest efforts,
Our truest and our best—
Our Edelweiss.”*





The Edelweiss 1921

Our Mother and Our Queen

Words by Dr. Clara L. Nicolay
Music by Elsie L. Stokes

*Oh time of happiness and youth,
Of joyful consecration,
Of holy zeal for faith and truth,
And love-born inspiration
When earth is clad in vernal hue,
The skies in golden sheen—
We raise our hymn of joy to you,
Our Mother and our Queen.*

*You lead from life's uncertain dawn
To glorious day your daughters;
In golden pictures you have drawn
The floods of living waters.
And round thy banner, blue and blue,
A faithful host is seen,
True to their honor, true to you,
Our Mother and our Queen.*

*Though roseclad hope may open wide
The future's golden portal;
And love shall crown—a happy bride—
Our brows with wreaths immortal;
Though all our dreams were coming true
Yet naught our hearts can wean,
Nor turn our grateful thoughts from you,
Our Mother and our Queen.*

*To grief and joy—as years go past—
Points fate's unerring finger;
But changeless shall, while life will last,
Your blessings with us linger,
Unfaltering love, like morning dew,
Shall keep your mem'ry green—
Our lodestar bright, we gaze on you—
Our Mother and our Queen.*



Foreword

WE, the Editors, present to you this volume of the *Edelweiss*, in which we have endeavored to portray life as it is at Queens, with the sincere hope that in years to come it will lead our thoughts back again to our happy College days.





D E D I C A T I O N

To

DR. J. R. NINNISS

OUR TEACHER AND
FRIEND

WE DEDICATE THIS VOLUME
IN APPRECIATION OF THE
SERVICE WHICH HE HAS
RENDERED TO OUR
ALMA MATER



The Edelweiss 1921



DR. J. R. NINNISS



The Edelweiss 1921



CAPTAIN WILLIAM ANDERSON
Registrar





The Edelweiss 1921



MRS. LENA M. RAGSDALE
Our Dean





Faculty

WM. ANDERSON.....	<i>Registrar</i>
MRS. LENA M. RAGSDALE.....	<i>Dean</i>
MISS FLORENCE CHUBBUCK.....	<i>English</i>
MISS NANCY T. MOOREFIELD.....	<i>Mathematics</i>
MADAME E. DE CHABOULON.....	<i>French and Spanish</i>
MISS SUSAN A. DUNN.....	<i>Latin</i>
MRS. LENA M. RAGSDALE.....	<i>Bible</i>
MISS ETHEL M. ABERNETHY.....	<i>Philosophy and Education</i>
MISS FLORENCE M. STONE.....	<i>Science</i>
MISS MARY E. FRIERSON.....	<i>Economics and History</i>
MISS RENA C. HARRELL.....	<i>English and Mathematics</i>
MISS LUCIE NAIVE.....	<i>Principal of Fitting School</i>
MISS M. LILLIAN BREMER.....	<i>Art</i>
MISS CARLOTTA P. MITCHELL.....	<i>Expression and Physical Culture</i>
MRS. BOOKER.....	<i>Domestic Science and Art</i>
DR. J. R. NINNISS.....	<i>Director of Music</i>
MRS. JEAN PETERS WELKER.....	<i>Piano</i>
MISS MARTIN.....	<i>Piano</i>
MISS HELEN KELSO.....	<i>Voice Culture</i>
A. D. LAJOIE.....	<i>Violin</i>
MISS ESSIE JOHNSTON.....	<i>Librarian, Social Secretary and Hostess</i>
MISS DORCAS DAVENPORT.....	<i>Secretary of College</i>
MRS. KATE MILLER.....	<i>Nurse</i>
MRS. LENA DAVIES.....	<i>Housekeeper</i>
J. B. MORRISS.....	<i>Chief Engineer</i>





The Edelweiss Staff

- HELEN JOHNSON.....*Editor-in-Chief*
KIZZIE DUKES OEHLER.....*Assistant Editor*
ELIZABETH KATRINE WIGGINS.....*Literary Editor*
HESSIE BOGER.....*Business Manager*
FRANCES PITTS.....*Business Manager*
MARGARET ELIZABETH CLARK.....*Photographic Editor*
AGNES LYNN BUCHANAN.....*Art Editor*
VIRGINIA HOLMES ATKINS.....*Athletic Editor*
LAURIE VIRGINIA DOWLING.....*Humor Editor*
FRANCES RUTH HERRON.....*Social Editor*



The Edelweiss 1921~

Annual Staff



KIZZIE OEHLER
ASSISTANT EDITOR



KATRINE WIGGINS
LITERARY EDITOR



HELEN
JOHNSON
EDITOR
IN
CHIEF



HESSIE BOBER
BUSINESS MGR.



FRANCIS PITTS
BUSINESS MGR.





The Edelweiss 1921

Annual Staff



RUTH HERRON
SOCIAL EDITOR



LAURIE DOWLING
HUMOR EDITOR



MARGARET
CLARK
PHOTOGRAPHIC
EDITOR



VIRGINIA ATKINS
ATHLETIC EDITOR



AGNES LYN BUCHANON
ART EDITOR





The Edelweiss 1921

Alma Mater

*Deep within the waving forest,
Far from bustling town,
Stands our noble Alma Mater;
Proudly looks she down.*

CHORUS:

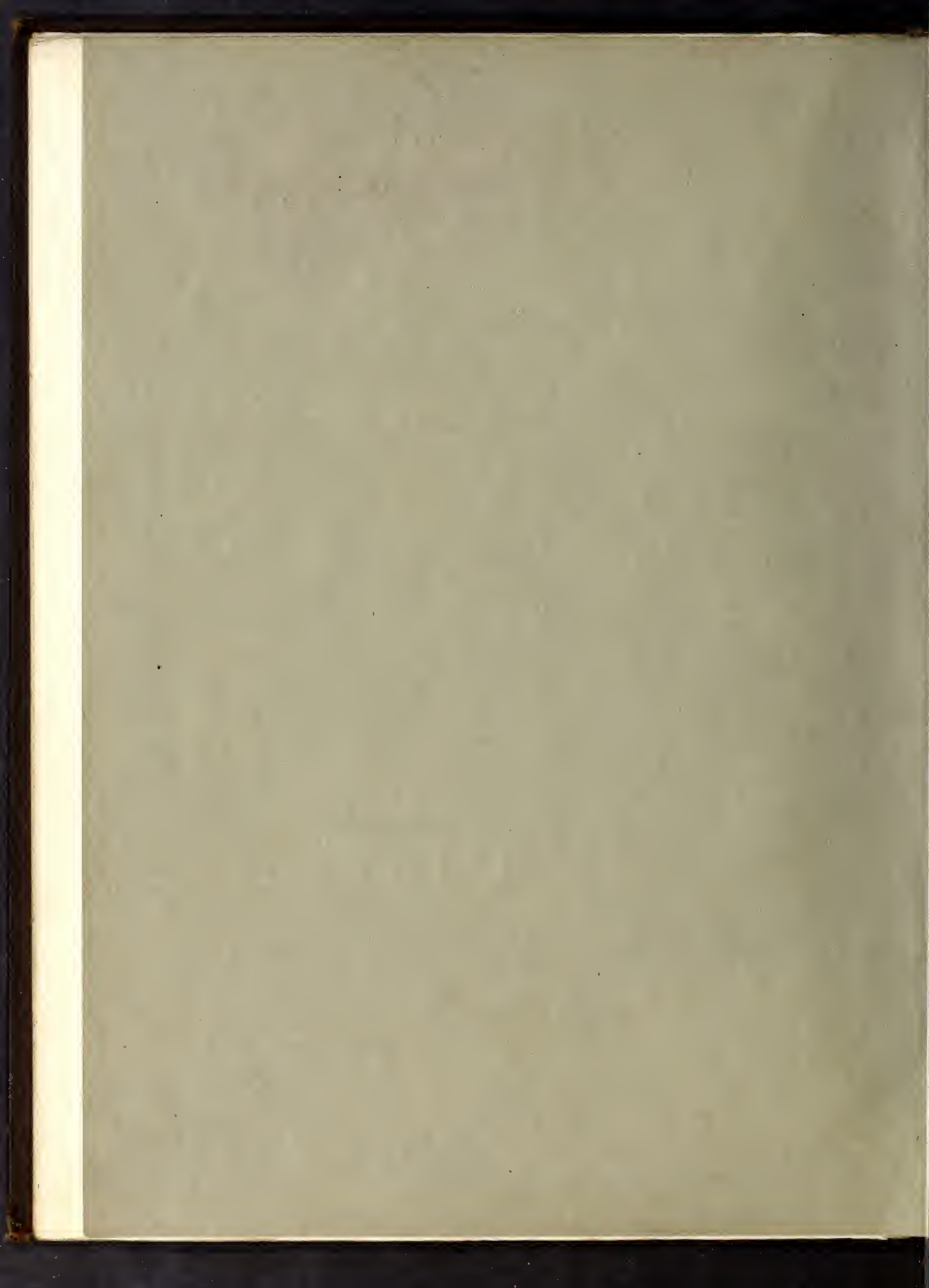
*Sing her praises, lift her chorus
Over hill and dale!
Hail to thee, our Alma Mater!
Hail to Queens! All Hail!*

*Deep among the fragrant pine trees
Is our college true.
There our noble Alma Mater
Proudly stands in view.*





C l a s s e s





Senior Class

MOTTO: "Laudandae Simus"

COLORS: Red and White

FLOWER: Red Rose

OFFICERS

- KATRINE WIGGINS.....President
- KIZZIE OEHLER.....Vice-President
- ANNIE THOMAS.....Secretary
- RUTH HERRON.....Treasurer
- HESSIE BOGER.....Historian
- FRANCES PITTS.....Prophet
- KATHRYN SHUTE.....Poet
- LAURIE DOWLING.....Testator
- LOUISE MORRIS.....Mascot



The Edelweiss 1921



MISS NANCY MOOREFIELD
Sponsor for Senior Class



LOUISE MORRIS
Mascot, 1921





The Edelweiss 1921

VIRGINIA HOLMES ATKINS

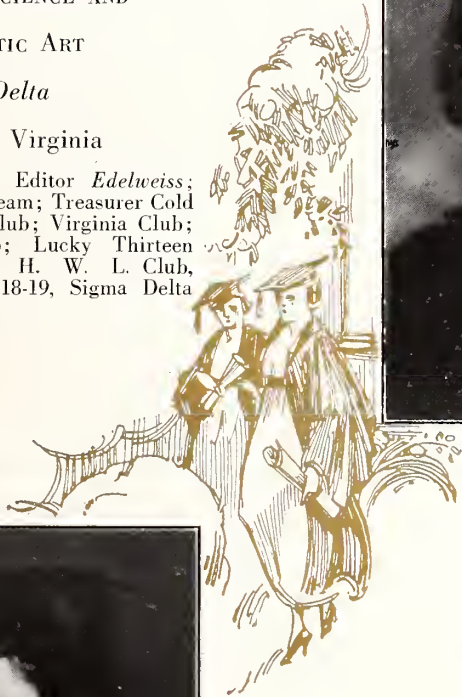
DOMESTIC SCIENCE AND

DOMESTIC ART

Pi Delta

Boydton, Virginia

1920-21, Athletic Editor *Edelweiss*; Senior Basketball Team; Treasurer Cold 8 Club; Cotillion Club; Virginia Club; Cosmopolitan Club; Lucky Thirteen Club. 1919-20, T. H. W. L. Club, Cotillion Club. 1918-19, Sigma Delta Club; Tennis Club.



MARGIE BENOY

EXPRESSION

Pi Delta

Selma, North Carolina

1920-21, President Expression Class; Glee Club; Captain Varsity Basketball Team; Senior Basketball Team; Tennis Club; Cotillion Club; Dramatic Club; Lucky Thirteen Club; State College Club.



The Edelweiss 1921

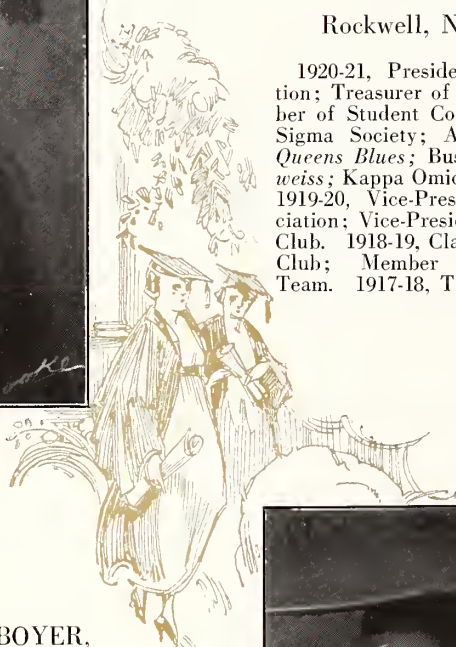


HESSIE BOGER, B.A.

Gamma Sigma

Rockwell, North Carolina

1920-21, President Athletic Association; Treasurer of Student Body; Member of Student Council; Critic Gamma Sigma Society; Athletic Reporter for *Queens Blues*; Business Manager *Edelweiss*; Kappa Omicron; Class Historian. 1919-20, Vice-President Athletic Association; Vice-President of Class; Tennis Club. 1918-19, Class Treasurer; Tennis Club; Member Varsity Basketball Team. 1917-18, Tennis Club.



LAVINIA ELIZABETH BOYER,

B.A.

Pi Delta

Charlotte, North Carolina

1920-21, Phi Beta Chi; Order of Olympus. 1919-20 Glee Club; Treasurer Dramatic Club; Tadpole Hater's Club. 1918-19, Class Basketball; Choral Club. 1917-18, Treasurer of Class of '19; Treasurer Pi Delta Society; Assistant Business Manager Year Book; Literary Editor *Princess*.





The Edelweiss 1921

AGNES LYNN BUCHANAN

B.M.

Gamma Sigma

Laurinburg, North Carolina

1920-21, Art Editor *Edelweiss*; Publicity Chairman Y. W. C. A.; Kappa Omicron. 1919-20, Religious Meetings Chairman Y. W. C. A.



ADA BUICE

DOMESTIC SCIENCE AND
DOMESTIC ART

Pi Delta

Pineville, North Carolina

1920-21, Phi Beta Chi Club.





The Edelweiss 1921~



MARGARET ELIZABETH CLARK

VOICE

Pi Delta

Clarkton, North Carolina

1920-21, President Glee Club; Vice-President Pi Delta Literary Society; Photographic Editor *Edelweiss*; Lucky Thirteen; Kama Club; Vice-President Cold 8 Club; Cotillion Club.

1919-20, Jazz Band; President K2 M2 T. W. H. L. Club; Glee Club; Cotillion Club. 1918-19, Glee Club; Cotillion Club.



LAURIE VIRGINIA DOWLING

DOMESTIC SCIENCE AND

DOMESTIC ART

Gamma Sigma

Charlotte, North Carolina

1920-21, Humor Editor *Edelweiss*; Gamma Sigma Reporter *Queens Blues*; Kappa Omicron; Member Student Council; Social Chairman Y. W. C. A.; Cheer Leader. 1918-19, Secretary Class; Secretary Gamma Sigma Society; Member Dramatic Club; Joke Editor Year Book; South Carolina Club; Only Child's Club. 1917-18, Secretary Athletic Association; Only Child's Club; South Carolina Club.





The Edelweiss 1921~

GEORGIA KEENE EDWARDS

DOMESTIC SCIENCE AND

DOMESTIC ART

Gamma Sigma

Charlotte, North Carolina

1920-21, Phi Beta Chi; Kappa Omicron.



ELIZABETH COWLES FINLEY

EXPRESSION

Gamma Sigma

North Wilkesboro, North Carolina

1920-21, Vice-President Dramatic Club; Class Basketball; Glee Club; Kappa Omicron. 1919-20, Glee Club; Class Tennis Team. 1918-19, Vice-President Expression Class; Class Tennis Team; Glee Club.





The Edelweiss 1921



FRANCES RUTH HERRON

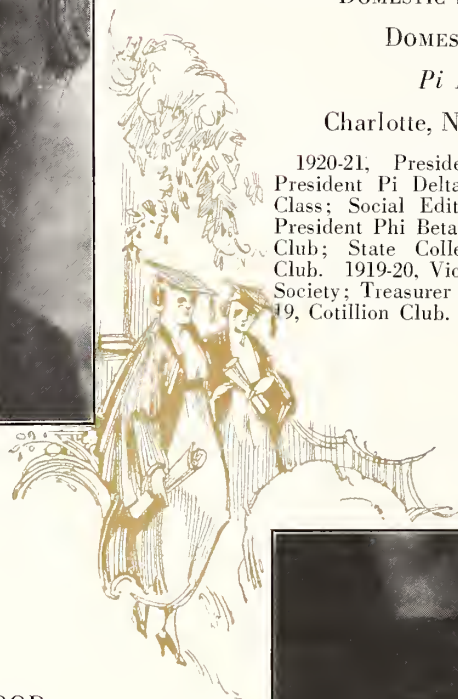
DOMESTIC SCIENCE AND

DOMESTIC ART

Pi Delta

Charlotte, North Carolina

1920-21, President Student Body; President Pi Delta Society; Treasurer Class; Social Editor *Edelweiss*; Vice-President Phi Beta Chi Club; D. D. D. Club; State College Club; Cotillion Club. 1919-20, Vice-President Pi Delta Society; Treasurer Special Class. 1918-19, Cotillion Club.



SARAH LOUISE HOOD

DOMESTIC SCIENCE AND

DOMESTIC ART

Gamma Sigma

Charlotte, North Carolina

1920-21, Cheer Leader Phi Beta Chi Club; State College Club.





The Edelweiss 1921

HELEN JOHNSON, B.A.

Gamma Sigma

Charlotte, North Carolina

1920-21, Editor-in-Chief *Edelweiss*; President Kappa Omicron; Secretary Gamma Sigma Society; Senior Editor *Queens Blues*. 1919-20, Secretary Gamma Sigma Society; Class Treasurer. 1918-19, Class Secretary; Monitor Gamma Sigma Society. 1917-18, Vice-President of Class.



MARGARET MAY

ART

Pi Delta

Morven, North Carolina

1920-21, Circulation Manager *Queens Blues*; Secretary and Treasurer D. D. D. Club; Kappa Omicron; Tennis Club; Cotillion Club; Glee Club. 1919-20, Secretary and Treasurer D. D. D. Club. 1918-19, President K 3 Club.



The Edelweiss 1921

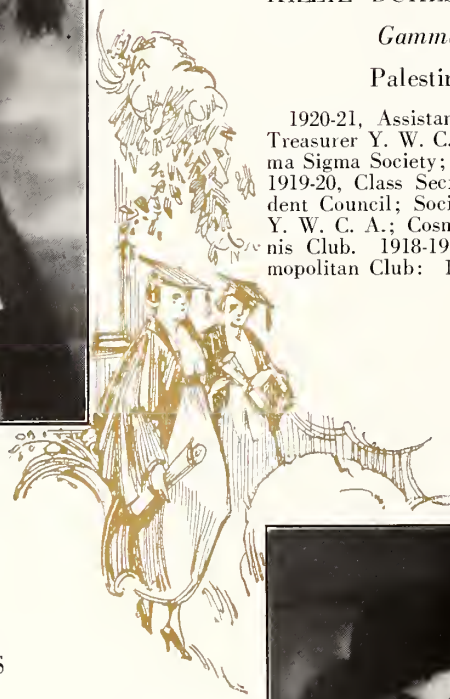


KIZZIE DUKES OEHLER, B.A.

Gamma Sigma

Palestine, Texas

1920-21, Assistant Editor *Edelweiss*; Treasurer Y. W. C. A.; Treasurer Gamma Sigma Society; Vice-President Class. 1919-20, Class Secretary; Member Student Council; Social Service Chairman Y. W. C. A.; Cosmopolitan Club; Tennis Club. 1918-19, Tennis Club; Cosmopolitan Club. 1917-18, Tennis Club.



FRANCES PITTS

EXPRESSION

Pi Delta

Elberton, Georgia

1920-21, Business Manager *Edelweiss*; Critic Pi Delta Society; President Dramatic Club; President Cold 8 Club; Cotillion Club; Sigma Delta Club; Lucky 13 Club. 1919-20, Cotillion Club; T. W. H. L. Club; Sigma Delta Club. 1918-19, Cotillion Club; Sigma Delta Club.





The Edelweiss 1921

KATHRYN SHUTE

DOMESTIC SCIENCE AND

DOMESTIC ART

Pi Delta

Monroe, North Carolina

1920-21, Class Poet; Secretary and Treasurer Phi Beta Chi Club; Kappa Omicron; Tennis Club; Jazz Band; Secretary Cold 8 Club; *Queens Blues* Staff; Lucky 13 Club; Kama Club. 1919-20, Jazz Band; Devil's Den; Vice-President K 2 M 2. 1918-19, Cotillion Club; Jazz Band.



ANNIE REMBERT THOMAS

DOMESTIC SCIENCE AND

DOMESTIC ART

Pi Delta

Ridgeway, South Carolina

1920-21; Phi Beta Chi; Class Secretary; Secretary Athletic Association; Monitor Pi Delta Society; Cotillion Club; South Carolina Club; D. D. D. Club. 1919-20, D. D. D. Club; K 3 Club; South Carolina Club. 1918-19, D. D. D. Club; South Carolina Club.





The Edelweiss 1921



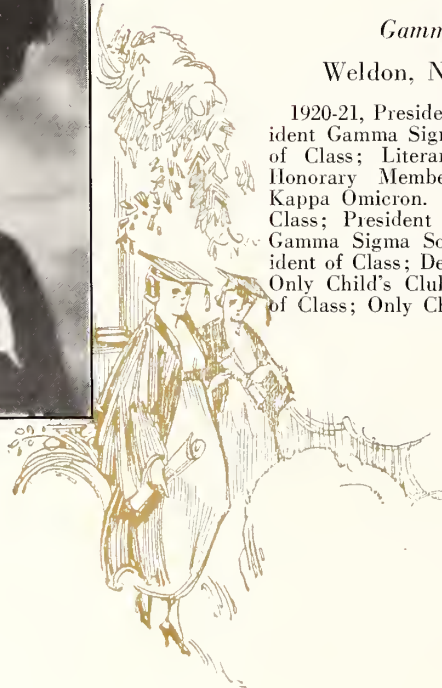
ELIZABETH KATRINE WIGGINS

B.A.

Gamma Sigma

Weldon, North Carolina

1920-21, President Y. W. C. A.; President Gamma Sigma Society; President of Class; Literary Editor *Edelweiss*; Honorary Member Student Council; Kappa Omicron. 1919-20, President of Class; President Y. W. C. A.; Critic Gamma Sigma Society. 1918-19, President of Class; Delegate to Blue Ridge; Only Child's Club. 1917-18, President of Class; Only Child's Club.





The Edelweiss 1921



FLORA DEBORAH BRASINGTON
Post Graduate in Piano
CHARLOTTE, N. C.



The Edelweiss 1921~

Senior Statistics

VIRGINIA
PRETTIEST~

ATKINS
MOST STYLISH

FRANCIS PITTS
MOST ATTRACTIVE
BIGGEST BLUFFER

RUTH HERRON
TIE - BEST-ALL-ROUND
BEST SPORT~

KIZZIE OEHLER
MOST POPULAR

SWEETEST
FACULTYS PICK



The Edelweiss 1921

KATRINE WIGGINS
FACULTIES' MOST DIGNIFIED
PET

HELEN JOHNSON -
71E - BEST-ALL-ROUND
MOST VERSATILE
MOST SINCERE
MOST INTELLECTUAL

GEORGIA EDWARDS
CUTEST
NEATEST

MARGARET
CLARK HANDSOMEST
MOST TALENTED



The Edelweiss 1921~

Laurie Dowling
MOST ORIGINAL

Elizabeth Finley
LAZIEST~

Hessie Boger
MOST STUDIOUS

Ada Buice
QUIETEST~



The Edelweiss 1921

KATHRYN SHUTE TIE-WITTIEST

MARGIE BENOY BEST ATHLETE

SARA HOOD MOST TALKATIVE

AGNES LYN BUCHANON

TIE-WITTIEST





The Edelweiss 1921

Senior Class Poem

*Sweet graduate you are admired
With your diploma and your gown.
Twice the consenting years have showered
Their utmost bounty on your head.
You leave your Alma Mater dear
To seek your fortune everywhere;
You leave behind your happy youth
And enter womanhood today.
Do you feel sad or do you smile,
That all is o'er, new life begins?
A life to grasp of unknown joy,
Of tasks and pleasant memories.
Courageous, strong, undaunted be
To face the unseen new.*

KATHRYN SHUTE, CLASS POET '21.





Senior History



HISTORY is not written by the makers of that history but by future historians who deem certain persons and events important enough to be recorded and handed down to future generations. Just to aid these future historians we, the Class of '21, wish to leave behind us a written account of our four years at Q. C.—the four years through which we have striven to reach the goal of graduation and to obtain the priceless treasure, education.

In the fall of 1917 Class '21 made its debut into the activities of college life at Queens and has ever since held its own. Ignorant on many subjects, such as Freshman English and Mathematics, when we entered this institution of learning, we through arduous work soon mastered them and felt at the end of the year that we were well able to sit on the throne of Sophdom.

When we returned in the fall of '18 our number had greatly decreased, but the few "wise Sophomores" who were faithful were able to defend our throne throughout the year. In doing this we were luckier than the Kaiser who found it fitting to desert his throne that same year. Taken altogether this year meant more to us than any other because many burdens were taken off of our minds by the close of the war, and we were again able to expend most of our energy on our books.

Our Junior year seemed very short, even though we did not become heir to the long-looked-for "Junior privileges." The monotony of our work was broken occasionally by entertainments and receptions for various Glee Clubs.

At last our reach obtained its grasp and we became dignified Seniors in the strictest sense of the word. Our Senior year was one of the best; it was full of many social events which together with the thought of our "dips" made our burdens light and our hearts happy.

As we separate and go out into the world to put into practice that which we have learned here let us keep the same standard of goodness, truth, and efficiency that we have kept for the past four years. Let us give to the world the best we have and the best will come back to us.

HESSIE BOGER, HISTORIAN.





Class Prophecy 1921

Ting-a-ling-ling — — — —

I WAS ALL ALONE and entirely too tired to answer the telephone. The day had been an unusually hard one and I was becoming more and more convinced that the life led by a busy housewife with twins two years old, was the most tiresome and nerve-racking as well as the most blissful life a young woman could lead. I had just succeeded in getting the twins to sleep—thank goodness the nurse has only one day off—and was trying to get a few minutes' rest before they would awake again; but the 'phone kept persistently ringing and refused to be ignored.

The voice that asked if it were I speaking at first sounded entirely unknown, but when she said, "Why, don't you remember the girl who roomed across the hall from you at Queens College—the truth meetings and fusses we used to have daily?" it suddenly dawned on me that it was no other than Margaret Clark—our old Peggy—talking to me.

"Why, Peggy, what *are* you doing here? Never did I think I'd run across you in this little Georgia town!"

"O yes," said Peggy. "I'm with the Metropolitan Opera now. Am having a vacation and trying to do something terribly original, so am traveling all over the country by myself—with my three maids of course! Haven't time really to stop over here, but found that I could stop for twenty-five minutes and then catch a train out, and wanted to hear about all the old girls so much, I just couldn't resist. You see, I haven't time to run out, so do tell me all about everybody!"

"Well, Peggy," I answered, "I've tried to keep track of all the girls, but haven't quite succeeded. Of course you knew that Helen Johnson was head of the Charlotte Observer! Yes, indeed, we always tho't she would be a newspaper woman, she was so interested in going thru printing houses, and discussing matters concerning the Annual. And, my dear, she hasn't become interested in men yet! I just can't understand it!"

And have you heard about Kizzie Oehler?—she who was always the life of the Class '21. Why she married the fall after we finished and she still adores her husband. And the children are perfectly darling! I saw her in Texas last summer—I think. She seemed supremely happy and had three children of her own and they had adopted two more. Really, I would never have known her, she was as thin as a rail—but looked quite well, and then er—let me see—"





"But—er—have you heard about Elizabeth Finley?" Peggy interrupted—"Why, she's the head of *Finley School of Dancing*—has made the biggest hit of any New York dancer for years! And when I saw her last summer Laura Dowling was with her! Yes, Laura was just roaming around. She had four men with her that day—all were quite frankly and openly in love with her. She still scorns the sterner sex, and has only 'men friends.' And what else do you think she had with her? A newly published Psychology book that she was asked to criticize! I felt awfully important and hated to leave such celebrity, but had an appointment to meet Margaret May at her studio in *Greenwich Villiage!* Her pictures have been displayed and admired everywhere, and she really is a success, but she likes the atmosphere at Greenwich Villiage and so persists in living there. But do go on about the other girls. What has become of our old Student Body President, Ruth Herron, and her room-mate, Annie Thomas?"

"Let me see—Oh, yes, Ruth has been admitted to the *Bar* and is tho't by some to be the greatest lawyer in West Virginia! She handles only divorce cases and the men tremble when they come in her presence. She actually *hates* men. And Annie is living in a beautiful little cabin, secluded from all men—publishing quaint little books called 'Receipts for the Bride'—she sent me Volume 49. She is quite happy at her work, however. And then there's little old Agnes Lyn—the last I heard of her was two years ago. She was then giving piano concerts. She always was ambitious to appear in public, you remember. And her cures for stage-fright are sought by all amateurs. Hessie Boger was visiting her. Hessie has received her Master's Degree and is head of Logic in Wellesly Collegenow. She is completely wrapped up in her work, but I have a feeling that she will get married soon. Peggy, have you heard anything from Kathryn Shute, Sarah Hood and Georgia Edwards lately?"

"Why, yes," said Peggy. "Little Sara Hood is still vamping all the mere boys and calling them *her men*. I think she too would marry if she only could decide which man she'd rather have. Kathryn has an enormous laboratory in Cleveland and is trying to find a chemical that will cure all pains. She is without a doubt the scientist of the age and has perfected a remedy for homesickness that has proved invaluable for school girls. Georgia also is in Cleveland. She holds the English chair at the University but spends most of her time with Kathryn in the lab. Georgia's knowledge of Shakespeare won her great laurels the past year, and were it not for her love for him I fear she would quite outrival him."

"Well, we know about most of the girls now—but oh! there's Virginia Atkins—have you heard about her? Why, she married the year after school was out. They almost came to blows over where they should live—North Carolina or Virginia—but as usual Virginia won out. I was more than surprised at her because we always

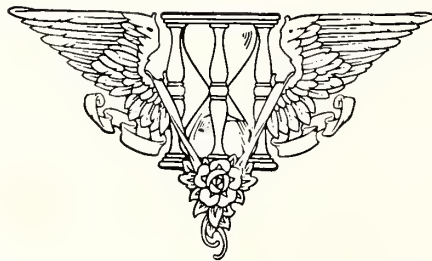




thought that she could never marry a mere man! Wonders never cease! Oh! and there's Ada Buice—she's costume designer for one of the largest houses in Baltimore! Designs mostly men's vests and neckties. And, my dear, Margie Benoy made worlds of money over her clever scheme of how to reduce overnight. You know she hit upon it quite by accident as she was never stout enough to think of reducing herself. Oh yes! Lavinia Boyer is getting her Master's Degree from Smith this year. And have you heard from Katrine? I haven't heard much from her, she's been so terribly busy—has been preparing for a wonderful position, I heard."

"Oh, yes," said Peggy, "there's my train and I must hurry. Katrine has been made dean of Queens College! She succeeds Mrs. Ragsdale, who wanted to retire years ago, but did not want the school to fall in lax hands while she upheld it for Katrine! The future looks very bright for all the girls, doesn't it? Well, good bye—just must leave."

Peggy rang off, and I settled down to thoughts of that immemorial year of '20-'21 at Queens.





Last Will and Testament

STATE OF NORTH CAROLINA }
COUNTY OF MECKLENBURG } CITY OF CHARLOTTE

We, the Members of the Senior Class, 1920-21, of Queens College, of the aforesaid State and County, being of sound mind and considering the certainty of our soon departure of these sacred halls, do make and declare this our Last Will and Testament.

FIRST: We will and bequeath to the college all scratched and damaged furniture, all holes in the walls to hold our pennants and pictures, assured of the fact that the said scratches and cracks made by us will, to coming generations, prove useful and inspiring.

SECOND: To the Juniors, realizing from sad and limited experience the need of a "privilege," we do hereby give and bequeath our treasured "privilege" to be used with care lest they be deprived of it.

THIRD: To the Freshmen, we leave all the delicate attitude bestowed upon us by the rats and mice, being assured that they will prove themselves "Friends that stick closer than a brother."

FOURTH: To our Sponsor, Miss Moorefield, we leave our love for the Senior Class, feeling that she needs some tie to bind her to us.

FIFTH: The President of the Senior Class, Katrine Wiggins, wills her great dignity and ability to call class meetings to Lois Rogers, President of the Freshman Class.

SIXTH: Hessie Boger leaves her table to Ida Bertha Bauersfeld, trusting that she will keep good order.

SEVENTH: Kizzie Oehler gives to Lucia Beason her privilege to laugh on all occasions.

EIGHTH: To Dorothy Powell, realizing her great need, Helen Johnson bequeaths her great intellect and ability to study.

NINTH: Laurie Dowling wills her "ground grippers" to her beloved room-mate, Eloise Brady.

TENTH: Agnes Lynn Buchannan wishes to give to Faye Sloan her steady nerves and love of playing in public.





The Edelweiss 1921

ELEVENTH: Kathryn Shute leaves to Rosebud Crump the privilege of having a crush on Miss Chubbuck.

TWELFTH: To Edna Deaton, Margaret Clark leaves her position as Soprano at the First Baptist Church.

THIRTEENTH: Margie Benoy, realizing Frances Boyd's need of a gentle voice, wills her her melodious one.

FOURTEENTH: Sarah Hood wills her pride of being a Senior and joy of using the "privilege" to Katherine Shuford, who, we think, will use and enjoy it equally as well.

FIFTEENTH: Ada Buice leaves her boisterous voice, which we all know so well, to Margaret Morgan.

SIXTEENTH: Elizabeth Finley wills her facial expression to Katherine Shuford.

SEVENTEENTH: Frances Pitts gives her success in captivating men to Myrtle Williamson.

EIGHTEENTH: To the future President of the Student Body, Ruth Herron wills her ability to call Student Body Meetings.

We hereby constitute and appoint our Sisters, The Sophomores, our lawful executors to all intents and purposes, to execute this our Last Will and Testament, according to the true intent and meaning of the same, and every part and clause thereof, hereby revoking and declaring utterly void all other Wills and Testaments by us heretofore made.

In Witness Whereof, we, The Senior Class, do hereunto set our hands and seals this the 18th day of May, 1921.

CLASS OF NINETEEN HUNDRED AND TWENTY-ONE.

Signed, Sealed and Declared by the said members of the Senior Class to be their Last Will and Testament in the presence of us, who at their request and in their presence, and in the presence of each other, do describe our names as witness hereto.

MARY WALLACE (Maid).
ALFRED BOYD (Chef).
BILL NINNISS (Doc's Boy).



The Edelweiss 1921



MOTTO: Do Ye the Next Thing

COLORS: Orange and Black

FLOWER: Black-eyed Susan

OFFICERS

MYRTLE WILLIAMSON.....*President*
 EDNA DEATON.....*Vice-President*
 MARGARET ANDERSON.....*Secretary and Treasurer*

CLASS ENROLLMENT

Regular Juniors

ELIZABETH ABERNATHY
 RENA BLANTON
 THELMA CORBETT

MARY LYNN CURRIE
 ROSEBUD CRUMP
 EDNA DEATON

GRAHAM MCCALL
 MILDRED MORSE
 MYRTLE WILLIAMSON

Irregular Juniors

MARGARET ANDERSON

LUCIA BEASON

IDA BERTHA BAUERSFELD

Special Juniors

KATHRYN SHUFORD

ALBERTA BROWN





The Edelweiss 1921



ELIZABETH
ABERNETHY

THELMA
CORBITT

ROSEBUD
CRUMP

GRAHAM
McCALL

MYRTLE
WILLIAMSON



RENA
BLANTON

MARY
LYNN
CURRY

EDNA
DEATON

MILDRED
MORSE

MARGARET
ANDERSON





The Edelweiss 1921



LUCIA
BEASON

IDA
BERTHA
BAUERSFELD

SPECIALS

KATHYRN
SHUFORD

ALBERTA
BROWN



Miss ETHEL ABERNETHY
Sponsor

(43)





Junior Poem

*There's a pause in our life just now
At the close of our Junior year,
And our joy seems hushed
From its riotous mirth
To the seriousness of good cheer.*

*There's love in our class for each girl,
And a comradeship that is true.
It's not in the mass
'Tis the spirit of each lass
Makes the Class of Twenty-two.*

*There's union in this class of ours
And love for our college true.
Of respect there's no lack
For the Orange and Black
Or of love for the Blue and Blue.*

*There's a pause in our life just now
As our course is almost through;
But we'll sing the praise
Throughout endless days
Of the Class of Twenty-two.*





The Edelweiss 1921



The Sophomore Class

MOTTO: "Faire Sans Dire"
COLORS: Green and Gold

OFFICERS

- | | |
|----------------------|-------------------------|
| FRANCES BOYD..... | President |
| MAY BELLE BROWN..... | Vice-President |
| MARIE SMITH..... | Secretary and Treasurer |





The Edelweiss 1921~



FRANCES
BOYD

MARIE
SMITH

KATHERINE
ELIZABETH
ANDERSON

VIRGINIA
HOOVER

MAY
BELLE
BROWN

RUTH
ANTHONY

HELEN
HICKSON

PAULINE
CORBITT





The Edelweiss 1921



KATHRYN
FREEMAN

MARGARET
SMART



SARA
McKINNON

HENRY
BELK



MISS FLORENCE M. STONE
Sponsor of Class

(47)





The Edelweiss 1921

Psalm of Sophomore Year

*If you think, my cheerful reader,
Sophomore year is free from care!
That it's way is strewn with roses
And no thorns are hidden there;*

*To the tales of Geoffrey Chaucer
I would first your thoughts invite;
Let's recall his worthy heroes,
Palemon and Good Arcite.*

*Could we, in the course of Latin,
Find a smooth and pleasant road,
When we read of wars in Livy
Or of heartaches in an ode?*

*In the date-filled History's pages,
Where great heroes' names we see,
Where the "Monroe Doctrine" shows us
What our limitations be.*

*Would the "Law of Gravitation"
Draw me from the way of life;
Or would any strong reaction
End for me this mental strife?*

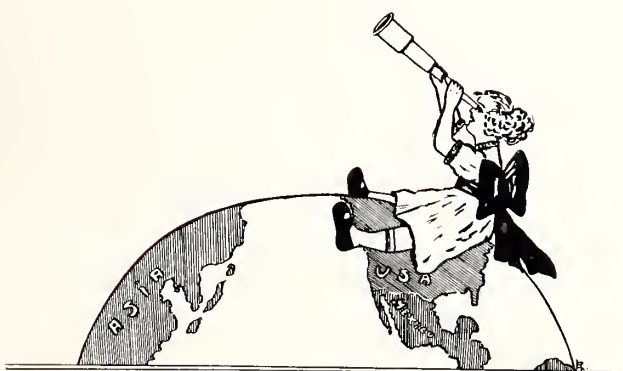
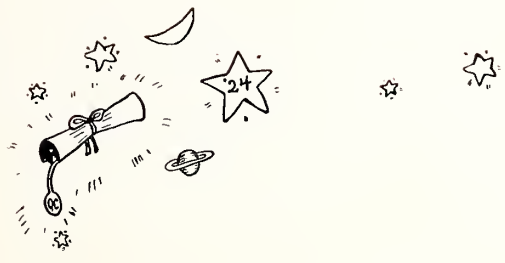
*No! comes ringing back the answer,
From ambition's loft on high,
Take the goods the gods provide you,
Make the club "Phi Beta Chi."*

*Now the course is all before you,
And developed is my theme,
You'll admit, if you are honest,
Sophomore year is not a dream.*





The Edelweiss 1921



FRESHMEN

MOTTO: "Conare esse Primus"
COLORS: Dark Blue and Gold
FLOWERS: Violets and Jonquils

OFFICERS

- LOIS ROGERS.....*President*
- MARGUERITE WILSON.....*Vice-President*
- ROSA MOYE MERCER.....*Secretary*
- CLARA KING.....*Treasurer*

(49)





Freshman Class Roll

ROBINSON, MARY
ROGERS, LOIS
MERCER, ROSA MOYE
TOMLINSON, MINNIE
DEARMAND, JENNIE SUE
ALEXANDER, SARAH
COLLINS, HATTIE RUTH
FREEMAN, KATE
MCCORMACK, ZULA
KNIGHT, ISABEL
FRY, HANNAH
HENDERSON, RUTH
ELLIOTT, MARIAN
BROWN, LORENE
HOOD, SARAH
BERRYHILL, ETHLEEN
MONTGOMERY, JANICE
BROWN, EDITH
HOWE, MARY

DOUGLASS, ELIZABETH
LACKEY, LOUISE
ROBINSON, ANNIE
LEELE, VELMA
BRADY, ELOISE
MORROW, MARGUERITE
JOHNSON, MARY
MCCALL, BENNIE
PORTER, MINNIE BLAIR
BELL, PERRY LEE
BRACY, ALETHIA
BETHUNE, MARIE
PEGRAM, FERIBA
FEEVES, MILDRED
DILES, HELEN
STEWART, WILLIE
BRADFORD, MARGARET
BROWN, SUSIE MAY
KRAUSS, NELL

HINSON, JULIA





The Edelweiss 1921




FRESHMAN CLASS





Freshman Class History

N SEPTEMBER 8TH there arrived in Charlotte the most brilliant and the largest Freshman Class Queens College has ever known. After a seemingly endless ride on the trolley from the Seaboard Station, we reached our destination described in the illustrated catalog as being situated in the beautiful Myers Park, but in our minds seemed more to be located in the midst of "No Man's Land."

On our first night in this forsaken place we were kept awake by the incessant croaking of frogs. But in the morning we were informed that "tad poles" were to be more dreaded than any other reptiles known to these parts.

About the second week we assumed a new and brighter outlook towards college life. The "old girls" gave an informal reception to welcome the new-comers, and this was just the beginning of a number of original and entertaining parties given throughout the year.

The Class of '24 showed unusual enthusiasm along athletic as well as literary lines. Special interest was taken in basketball. The "green little Fresh" were very proud of their victory over the sedate Seniors on October 15th. Later in the year three of our members made the Varsity team.

It is a certainty that no other class in college enjoyed the two weeks' vacation at Christmas time more than did the Freshman. Almost every member of the class returned after the holidays, only a few being ensnared in the web of matrimony.

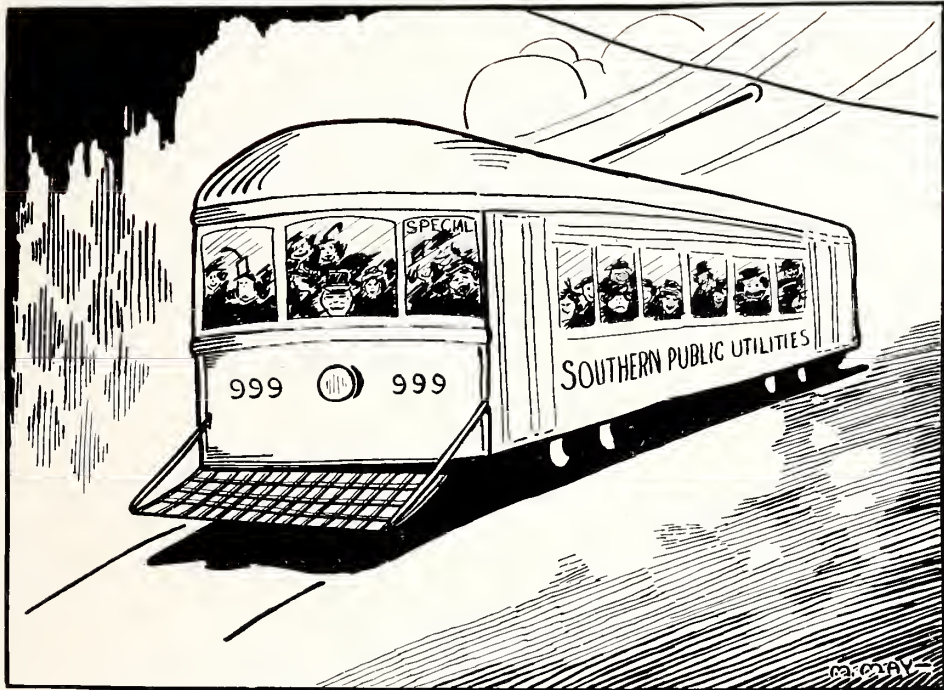
The quiet serenity of our voyage was broken by mid-term examinations. However, all of us survived without any dangerous after-effects.

On January 29th, under the direction of the Y. W. C. A., "Stunt Night" was held in the auditorium; and we Freshmen were the only class who showed enough courage and spunk to present before both the faculty and students a mock faculty meeting. This was a great success.

And now as our first college year draws to a close, we hope to return next year with the largest, wisest Sophomore class ever!



The Edelweiss 1921



Special Class

OFFICERS

- MARGARET CLARK.....*President*
RUTH HERRON.....*Vice-President*
FLORA BRAZINGTON.....*Treasurer*
KATHRYN SHUFORD.....*Reporter to Blues*






Special Class Roll

ABBOTT, VIRGINIA
BLUM, LAURA
BANKHEAD, MARY
BUIE, MARY
CHANDLER, LAURA
CAIN, RUBY
CROSS, ADELE
CROWELL, MARY LEE
CASHION, MARGUERITE
DELANEY, WILHEMINA
DUNN, MARGARET
DENDY, ELIZABETH
DAVENPORT, RUTH
ENSOR, RUTH
ELLIOTT, MARIAN
FREEMAN, BLANCHE
GOOD, FRANCIS
GAELLARD, CORNELIA
HENDERSON, ANNIE
HENDERSON, RUTH
HALL, ETHEL
HOLMES, BEULAH
JENNINGS, LOUISE
JONES, ANNIE BELLE

JORDAN, VIOLA
LYNCH, WILLIE
MCBRAYER, FRANCES
MORGAN, MARGARET
MCKINNON, SARAH
MCKAY, JANE
MCGINN, ALICE
MANSON, SUSIE
MONROE, NANCY
PATTERSON, DOROTHY
REEVES, MILDRED
ROBINSON, MARY
SLOAN, FAYE
STEELE, MARY
SHUFORD, KATHRYN
SHAW, MARY
SWITZER, EUNICE
WALLACE, RUTH
WALKER, KATE
WILKIE, LOUISE
WALL, EFFIE
WATKINS, ANNIE BELLE
WELLMAN, MARGARET
WILKINS, VIRGINIA

WHITLEY, EULA

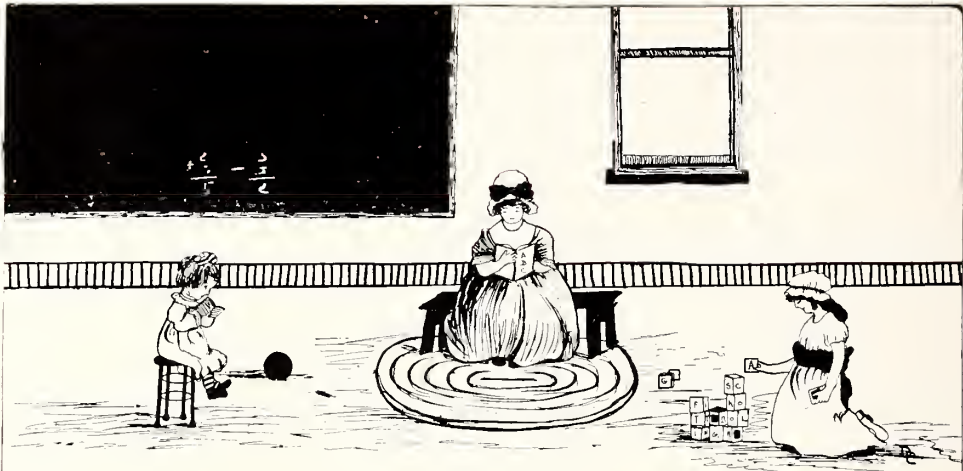




The Edelweiss 1921



SPECIAL CLASS



FITTING SCHOOL

Fitting School

MOTTO: B2
 COLORS: Black and Green

OFFICERS

- ANNIE PARKS MOORE.....President
 RUBY CAIN.....Secretary and Treasurer





The Edelweiss 1921

Fitting School Roll

ALLISON, NETTIE
ABBOTT, VIRGINIA
BELL, VIRGINIA
BANKHEAD, MARY
CAIN, RUBY
CROWELL, HELEN
FLOYD, KATHLEEN
GOOD, FRANCES
GARRISON, MARY
GREGORY, ROSALIE
GREGORY, NELL
HARDIE, ANN
HOOD, KALISTA

HINSON, RUBY
HODGE, HELEN
HENDERSON, MILDRED
IVEY, KATHERINE
JAMISON, WILMA
MOORE, ANNIE PARKS
MCMURRAY, ELIZABETH
MOBLY, MARY
RHYNE, MABEL
WINGATE, MYRTLE
WASHBURN, ALBERTA
WILLIAMS, MARY
WEARN, MARGARET

The Edelweiss 1921

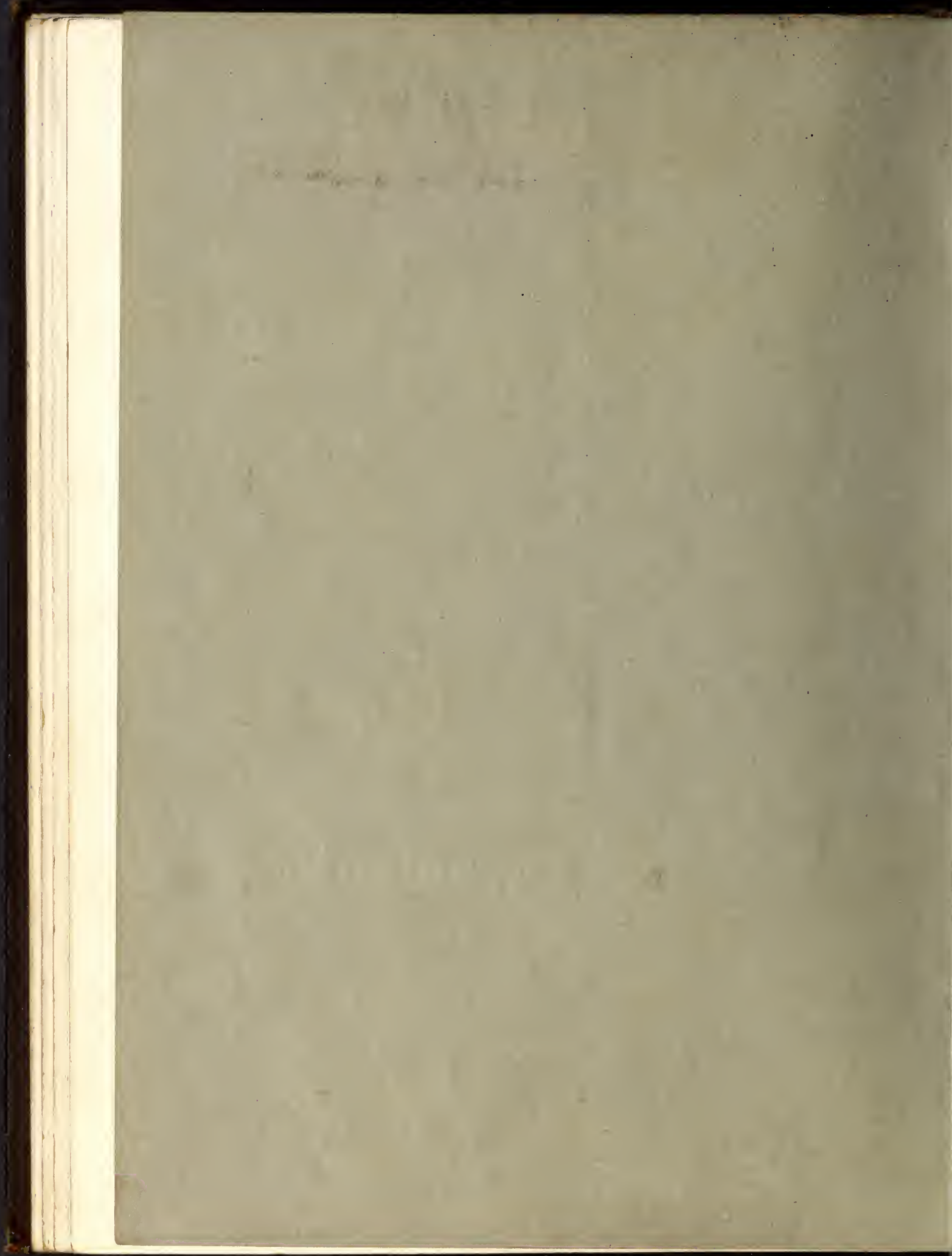


FITTING SCHOOL





Organizations



The Edelweiss 1921

BODY

STUDENT OFFICERS



FRANCIS RUTH HERRON
PRESIDENT.



MYRTLE WILLIAMSON
VICE-PRESIDENT.



HESSIE BOGER
TREASURER.



MARGARET ANDERSON
Town TREASURER.



STUDENT COUNCIL



HESSIE

BOGER



LAURIE DOWLING

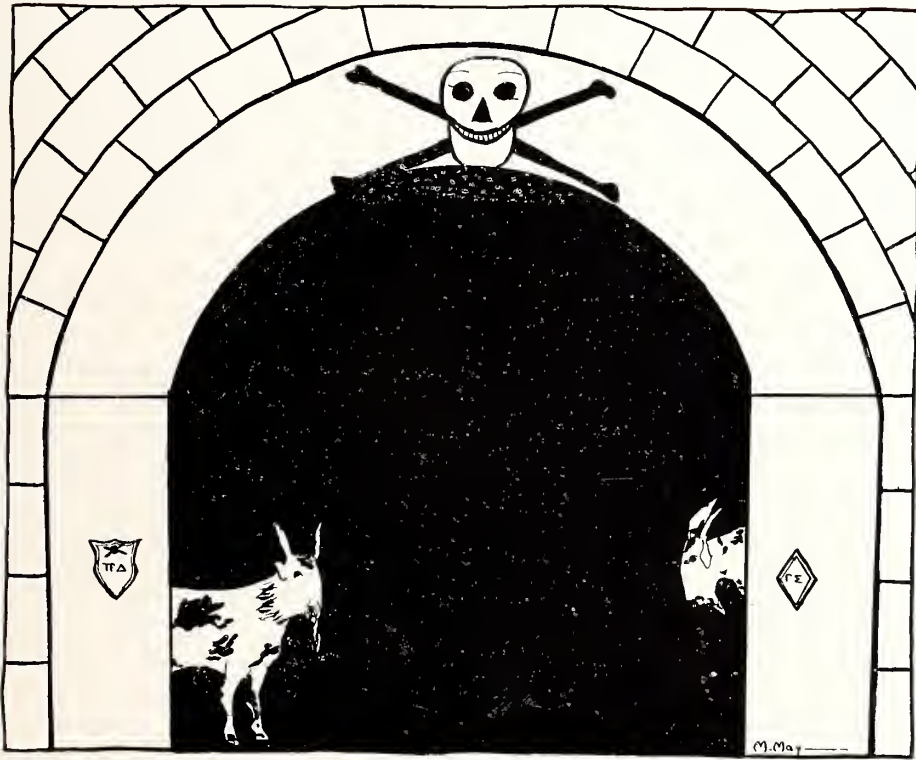


FLORA BRASINGTON





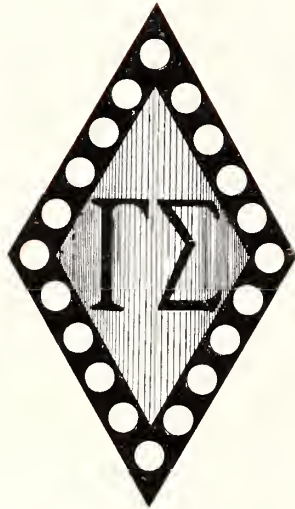
The Edelweiss 1921



SOCIETIES

(61)





(62)





The Edelweiss 1921

Love Her

*Love her! Yes, indeed, I do;
Hold her in all honor;
Come to see her every day;
Lavish gifts upon her.*

*Love her! True she is as gold;
Thoughtful, earnest, tender;
Gladly to her loving care
I my heart surrender.*

*Love her! High she holds her name—
Name without a stigma.
'Course I love her! Now don't you?
SHE is Gamma Sigma!*

M. L. P.





The Edelweiss 1921~



GAMMA SIGMA

SOCIETY OFFICERS

GRAHAM McCALL
VICE-PRESIDENT

KIZZIE OEHLER
TREASURER

KATRINE WIGGINS
PRESIDENT

HELEN JOHNSON
SECRETARY

HESSIE BOGER
CRITIC

ΓΣ





Gamma Sigma Roll

ELIZABETH ABERNETHY
 RUTH ANTHONY
 KATHERINE E. ANDERSON
 SARA ALEXANDER
 SARA ARDREY
 LUCIA BEASON
 HESSIE BOGER
 AGNES L. BUCHANAN
 ALBERTA BROWN
 FRANCES BOYD
 MARIE BETHUNE
 LORENE BROWN
 EDITH BROWN
 SUSIE MAE BROWN
 MARGARET BRADFORD
 ETHLEEN BERRYHILL
 MARGUERITE CASHION
 DORCAS DAVENPORT
 RUTH DAVENPORT
 LAURIE DOWLING

WELHEMINA DELANEY
 GEORGIA EDWARDS
 ELIZABETH FINLEY
 KATHARINE FREEMAN
 KATE FREEMAN
 BLANCHE FREEMAN
 SARA HOOD
 JULIA HINSON
 BONNIE HAIGLER
 ETHEL HELMS
 CARRIE DOBBIE HARRISON
 HELEN JOHNSON
 ANNIE BELLE JONES
 NELL KRAUSS
 LOUISE LACKEY
 SARA MURRAY
 CLARA MEDLIN
 JANICE MONTGOMERY

GRAHAM MCCALL
 BENNIE MCCALL
 SALLIE MAE McLAURIN
 KIZZIE OEHLER
 LESSIE PUSSEY
 BESSIE PUSSEY
 FERIBA PEGRAM
 MINNIE BLAIR PORTER
 ZELMA PAXTON
 FRANCES REID
 CAROLYN ROGERS
 MARIE SMITH
 MARGARET SMART
 VELMA TEAL
 CORNELIA WEARN
 HELEN WALLACE
 EFFIE WALL
 MYRTLE WILLIAMSON
 EULA WHITLY
 KATRINE WIGGINS

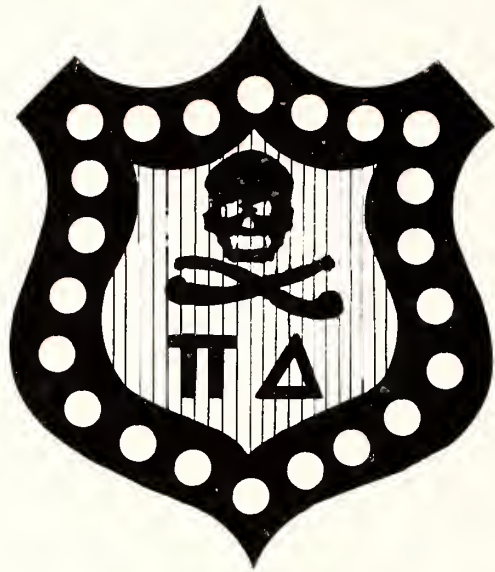


MARGARET UNA NINNISS
Mascot





The Edelweiss 1921



(66)





For Dear Old Pi

*For dear old Pi we lift on high
Our glasses sparkling clear;
Of her we boast,
To her we toast
Our society so dear.*

*Whether far or near, there is no fear
But that we will be true;
We'll speak your name
With naught but fame,
For honor is your due.*





The Edelweiss 1921~



RUTH HERRON
PRESIDENT~

MARGARET CLARK
VICE-PRESIDENT~

FRANCIS PITTS
CRITIC~

FLORA BRASINGTON
TREASURER~

IDA BERTHA
BAUERSFELD~
SECRETARY~





The Edelweiss 1921

Members Pi Delta

MARGARET ANDERSON
 VIRGINIA ATKINS
 HELEN BILES
 RENA BLANTON
 ADA BUICE
 PERRY LEE BELL
 KATHLEEN BACON
 MARY BUIE
 MARGIE BENOY
 ELOISE BRADY
 ALETHIA BRACY
 SARA BROWN
 FRANCES BACON
 LAVINIA BOYER
 MAY BELL BROWN
 IDA BERTHA BAUERSFELD
 FLORA BRASINGTON
 ANNIE BURNS
 ROSEBUD CRUMP
 LUCILE CONNLEY
 HATTIE RUTH COLLINS
 MARY LEE CROWELL
 MARY LYNN CURRIE
 MARGARET E. CLARK
 ADELE CROSS
 LAURA CHANDLER
 THELMA CORBETT
 PAULINE CORBETT
 ELIZABETH DENDY
 ELIZABETH DOUGLAS
 EDNA DEATON
 MARION ELLIOTT
 HANNAH FRYE
 PEARLE FLANAGAN
 CORNELIA GAILLARD

JESSIE HAYWOOD
 RUTH HENDERSON
 KATHERINE HUNTER
 BEULAH HOLMES
 MARY HOWE
 RUTH HERRON
 CORDELIA HENDERSON
 VIRGINIA HOOVER
 ANNIE H. HENDERSON
 HELEN ANN HICKSON
 LOUISE JENNINGS
 MARY JOHNSTON
 VIOLA JORDAN
 ISABELL KNIGHT
 MELVA KIRKWOOD
 FRANCES LOVE
 MARGARET MORGAN
 SUSIE MANSON
 MARGUERITE MORROW

ROSA MOYE MERCER
 NANCY MONROE
 LUCY GAILLARD
 MARGARET MAY
 MILDRED MORSE
 ZULA MCCORMAC
 GENEVIVE MCCORMAC
 FERRIS PATTERSON
 NORA PEACOCK
 MARGARET PORTER
 CAROLYNE POE
 FRANCES PITTS
 DOROTHY POWELL
 LOIS ROGERS
 ANNIE ROBINSON
 MILDRED REEVES
 MARY ROBINSON
 FAY SLOAN
 MARTHA SMITH
 FLORA SIMMONS
 MARY STEELE
 MARY SHAW
 KATHRYN SHUTE
 KATHRYN SHUFORD
 ANNIE THOMAS
 ALICE TODD
 MINNIE THOMPSON
 GLADYS WIGGINS
 MARGARET WELMAN
 VIRGINIA WILKINS
 MARGUERITE WILSON
 RUTH WALLACE
 ANNIE BELL WATKINS
 KATE WALKER
 LOUISE WILKIE



VINCENT PAUL ROUSSEAU, JR.
Mascot





Pi Sigma Literary Society

MOTTO: Ever onward; ever upward.

COLORS: Burnt Orange and Black.

FLOWER: Black-eyed Susan.





The Edelweiss 1921

OFFICERS

ANNIE PARKS MOORE.....*President*
MILDRED HENDERSON.....*Vice-President*
VIRGINIA ABBOTT.....*Treasurer*
FRANCES GOOD.....*Critic*

ENROLLMENT

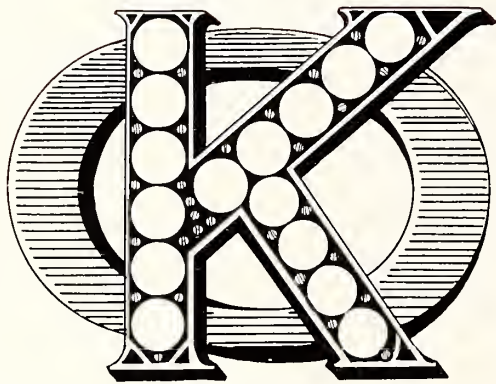
VIRGINIA ABBOTT
MARY BANKHEAD
VIRGINIA BELL
RUBY CAIN
HELEN CROWELL
ANNETTE FARWELL
MARY
MARY GARRISON
FRANCES GOOD
NELL GREGORY
ANN HARDIE
HELEN HARDIE

MILDRED HENDERSON
KALISTA HOOD
LUCY HEATH
KATHERINE IVEY
WILMA JAMISON
MARGARET MCGILLIVRAE
ELIZABETH McMURRAY
ANNIE PARKS MOORE
MABLE RHYNE
MYRTLE WINGATE
ALBERTA WASHBURN
NANNIE TAYLOR





The Edelweiss 1921~



(72)



The Edelweiss 1921

KAPPA OMICRON SOCIETY OFFICERS



HELEN JOHNSON
PRESIDENT



GRAHAM McCALL
TREASURER



MILDRED MORSE
SECRETARY



MYRTLE WILLIAMSON
VICE-PRESIDENT



MISS FLORENCE CHUBBUCK
Honorary Member





Members Kappa Omicron

HONORARY SOCIETY

ELIZABETH ABERNATHY, '22.	EDNA DEATON, '22.
MARGARET ANDERSON, '22.	GEORGIA EDWARDS, '21.
LUCIA BEASON, '22.	ELIZABETH FINLEY, '21.
AGNES LYNN BUCHANON, '21.	HELEN JOHNSON, '21.
HESSIE BOGER, '21.	GRAHAM MCCALL, '22.
MAY BELLE BROWN, '23.	MILDRED MORSE, '22.
ROSEBUD CRUMP, '22.	MARGARET MAY, '21.
THELMA CORBETT, '22.	KATHRYNE SHUTE, '21.
MARY LYNN CURRY, '22.	MARIE SMITH, '23.
LAURIE DOWLING, '21.	MYRTLE WILLIAMSON, '22.

KATRINE WIGGINS, '21.



The Edelweiss 1921



OFFICERS

KATRINE WIGGINS.....*President*
 MYRTLE WILLIAMSON.....*Vice-President*
 LUCIA BEASON.....*Secretary*
 KIZZIE OEHLER.....*Treasurer*

CHAIRMAN OF COMMITTEES

MARIE SMITH.....*Religious Meetings*
 EDNA DEATON.....*Missionary*
 AGNES L. BUCHANAN.....*Publicity*
 LAURIE DOWLING.....*Social*
 FLORA BRASINGTON.....*Social Service*
 MARGARET SMART.....*N. F. R.*





The Young Woman's Christian Association

The Y. W. C. A. is an inter-denominational working union of college girls who are striving to live up to the highest standards of womanhood, and who believe that in Christ is found the inspiration to achieve those standards.

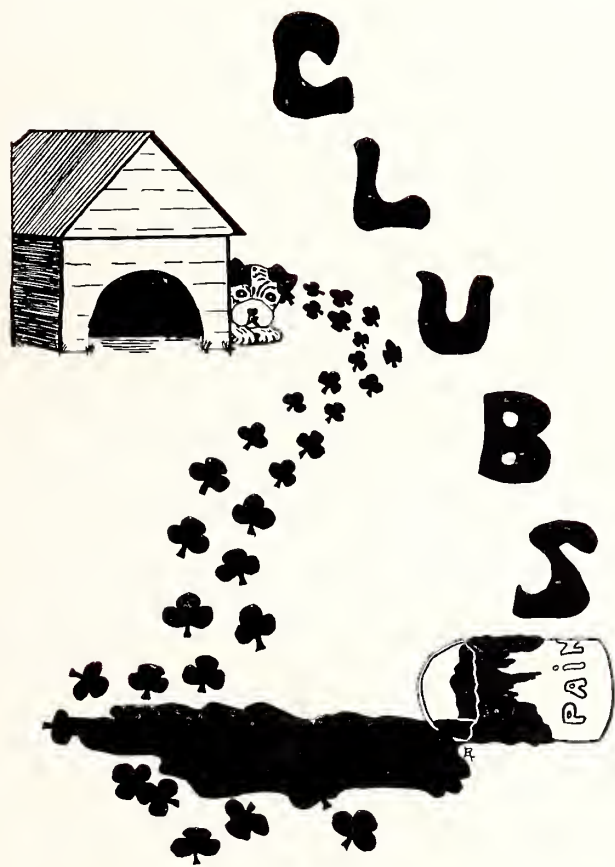
In September, 1920, our new Y. W. C. A. Cabinet took up its work for the coming year with buoyant hope. On every hand we met with loyal support and hearty co-operation. The new girls were unusually enthusiastic and by October 1st every girl was a member of the Y. W. C. A. This was the first time we had had a one hundred per cent membership in our Association and we felt greatly encouraged. However, we accredit our successful year not to the Cabinet but to our faculty advisors and to the loyal co-operation of every member of the Association.

Our hope now is that the Y. W. C. A. of next year may be blessed and that they may have the most successful year in the history of Queens' Y. W. C. A.

—E. K. W. '21.



The Edelweiss 1921



The Edelweiss 1921~

Ø BX



SCIENCE CLUB

(78)





The Edelweiss 1921



Phi Beta Chi Club

Organized 1920

MOTTO: "The fates will find a way"

COLORS: Burnt Orange and Green

HONORARY MEMBERS

MRS. LENA RAGSDALE

MISS HELEN KELSO

MISS CARLOTTA MITCHELL

(79)





Members of Phi Beta Chi Club

KATHRYN ANDERSON
 RUTH ANTHONY
 ELOISE BRADY
 HELEN BILES
 LUCIA BEASON
 FRANCES BOYD
 IDA B. BAUERSFELD
 LAVINIA BOYER
 ETHELENE BERRYHILL
 MAY BELL BROWN
 SUSIE MAY BROWN
 EDITH BROWN
 MARY BUIE
 ADA BUICE
 ALETHIA BRACY
 LORENE BROWN
 SARAH BROWN

MARGARET BRADFORD
 LUCILE CONNELLY
 HATTIE RUTH COLLINS
 ROSEBUD CRUMP
 PAULINE CORBITT
 JENNIE SUE DE ARMON
 WILHEMINA DELANEY
 GEORGIA EDWARDS
 KATHERINE FREEMAN
 KATE FREEMAN
 LUCY GILLIARD
 JULIA HINSON
 ETHEL HELMS
 MARY HOWE
 RUTH HERRON
 HELEN HICKSON

SARAH HOOD
 MARY JOHNSON
 MILDRED MORSE
 JANICE MONTGOMERY
 ROSA MOYE MERCER
 MARGUERITE MORROW
 ZULA MCCORMAC
 DOROTHY POWELL
 FERBLIA PEGRAM
 ZELMA PAXTON
 ANNIE ROBINSON
 MINNIE B. PORTER
 MARIE SMITH
 KATHRYN SHUTE
 ANNIE THOMAS
 MARGUERITE WILSON
 VIRGINIA WILKINS

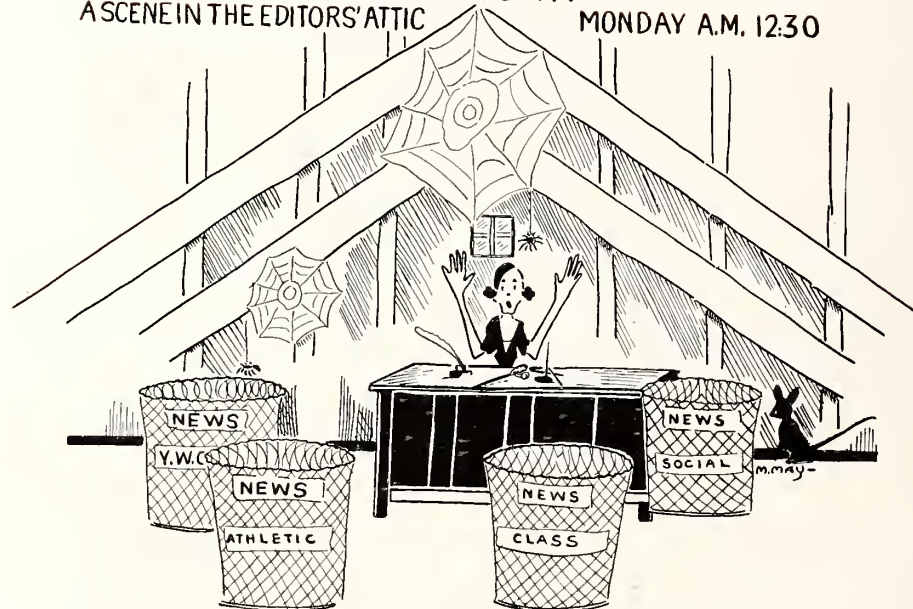




The Edelweiss 1921



NO NEWS IN
A SCENE IN THE EDITORS' ATTIC MONDAY A.M. 12:30



Editorial Staff of Queens Blues

MYRTLE WILLIAMSON.....*Editor-in-Chief*
MISS FLORENCE CHUBBUCK.....*Faculty Advisor*

ASSOCIATE EDITORS

HELEN JOHNSON MILDRED MORSE RUTH ANTHONY ROSA MOYE MERCER

REPORTERS

HESSIE BOGER.....*Athletic* ROSEBUD CRUMP.....*Feature*
MARIE SMITH.....*Y. W. C. A.* THELMA CORBETT.....*Jester*

SOCIETY

EDNA DEATON.....*Pi Delta* LAURIE DOWLING.....*Gamma Sigma*

AROUND THE CAMPUS

LUCIA BEASON KATHRYN SHUTE KATIE BESS ANDERSON

BUSINESS STAFF

GRAHAM McCALL.....*Business Manager*

CIRCULATION MANAGERS

IDA B. BAUERSFELD ELIZABETH ABERNATHY MARGARET MAY

ADVERTISING MANAGERS

MARGARET ANDERSON FRANCES BOYD CORDELIA HENDERSON RUTH WALLACE



The Edelweiss 1921





Scotland County Club

AGNES LYNN BUCHANAN.....*President*
 NANCY MONROE.....*Vice-President*
 MARY BUIE.....*Secretary-Treasurer*

MEMBERS

MARY BUIE	MARY SHAW
JANE MCKAY	NANCY MONROE
ANNIE BELL JONES	AGNES LYNN BUCHANAN



The Edelweiss 1921~



Cosmopolitan Club

MISS MARTIN.....	Canada
MISS HELEN KELSO.....	Indiana
MISS FLORENCE STONE.....	Florida
MISS CHARLOTTA MITCHELL.....	Alabama
MISS FLORENCE CHUBBUCK.....	Ohio
ANNIE THOMAS.....	South Carolina
KATHERINE ELIZABETH ANDERSON.....	Missouri
MINNIE TOMLINSON.....	Louisiana
ANNIE HARDIE.....	Louisiana
CORNELIA GALLIARD.....	Alabama
MARY ROBINSON.....	Alabama
VELMA TEELE.....	Alabama
EDNA DEATON.....	Virginia
VIRGINIA WILKINS.....	Virginia
KATHRYN SHUTE.....	North Carolina
MARCIE BENOY.....	North Carolina
LOIS ROGERS.....	Texas
MILDRED REEVES.....	Georgia
ADELE CROSS.....	Tennessee



The Edelweiss 1921



South Carolina Club

MEMBERS

MARY BANKHEAD
 ADA BUICE
 LAURA BLUM
 LUCIA BEASON
 KATHLEEN FLOYD
 PEARL FLANAGAN
 ROSALIE GREGORY
 NELL GREGORY
 FRANCES GOODE
 CARRIE DARBIE HARRISON

JULIA HINSON
 RUBY HINSON
 FRANCES LOVE
 ELIZABETH McMURRAY
 LESSIE PURSER
 BESSIE PURSER
 CAROLYN ROGERS
 MARIE SMITH
 EUNICE SWITZER
 ANNIE THOMAS



The Edelweiss 1921



N. C. State Club

MEMBERS

MARGIE BENOY

HELEN BILES

ELOISE BRADY

LELIA CANNON

ELIZABETH DENDY

ELIZABETH DOUGLAS

MILDRED HENDERSON

RUTH HERRON

MARY JOHNSTON

SUSIE MANSON

MARGARET MORGAN

ROSA MAY MERCER

RUTH WALLACE

EFFIE WALL

BEULAH HOLMES





The Edelweiss 1921



Steele Creek Club

OFFICERS

"JIGGS" WILLIAMSON.....*President*
 DORSAS DAVENPORT.....*Vice-President*
 SUSIE MAE BROWN.....*Secretary and Treasurer*
 "MAGGIE" BRASINGTON.....*Mascot*

MEMBERS

ETHLEEN BERRYHILL
 LORENE BROWN
 SUSIE MAE BROWN
 DORGAS DAVENPORT
 RUTH DAVENPORT
 BLANCHE FREEMAN

JANICE MONTGOMERY
 FERIBA PEGRAM
 MINNIE BLAIR PORTER
 FAY SLOAN
 MYRTLE WINGATE
 MYRTLE WILLIAMSON

KATE FREEMAN





The Edelweiss 1921



Virginia Club

MEMBERS

MISS NANCY MOOREFIELD
LAVINIA BOYER
LOUISE JENNINGS

DOROTHY PATTERSON
VIRGINIA WILKINS
EDNA DEATON

(89)





The Edelweiss 1921



Jazz Band

- | | |
|----------------------|----------------------|
| KATHRYN SHUTE..... | <i>Guitar</i> |
| RUTH HENDERSON..... | <i>Guitar</i> |
| LOIS ROGERS..... | <i>Guitar</i> |
| RUBY CAIN..... | <i>Violin</i> |
| ELOISE BRADY..... | <i>Mandolin</i> |
| MARGARET CLARK..... | <i>Mandolin</i> |
| MARION ELLIOT..... | <i>Ukelele</i> |
| KATHRYN SHUFORD..... | <i>Ukelele</i> |
| KATHRYN IVEY..... | <i>"Bell Tapper"</i> |



The Edelweiss 1921



Glee Club

MISS HELEN KELSO.....*Director*

OFFICERS

MARGARET CLARK.....*President*

BEULAH HOLMES.....*Vice-President*

MARGARET MACKEY.....*Secretary-Treasurer*

FLORA BRASINGTON.....*Pianist*

MEMBERS

MARY BANKHEAD
 LAURA ALEXANDER
 LAURA BLUM
 MARGIE BENOY
 MARY LYNN CURRIE
 MARGUERITE CASHION
 MARGARET CLARK
 RUTH DAVENPORT
 ELIZABETH FINLEY
 FRANCES GOOD
 MARY GARRISON

BEULAH HOLMES
 KALISTA GOOD
 MARY HOWIE
 LOUISE JENNINGS
 MARGARET MAY
 SUSIE MANSON
 MARY STEELE
 MINNIE TOMLINSON
 LOUISE WILKIE
 MARGUERITE WILSON
 EFFIE WALL



The Edelweiss 1921



The Its

MEMBERS

ANNE HARDIE
HELEN CROWELL
VIRGINIA BELL

MILDRED HENDERSON
VIRGINIA ABBOTT
RUBY CAIN



The Edelweiss 1921



W. W. W.

MEMBERS

VIRGINIA ABBOTT
MARY BANKHEAD

RUBY CAIN
FRANCES GOOD

MILDRED HENDERSON



The Edelweiss 1921~



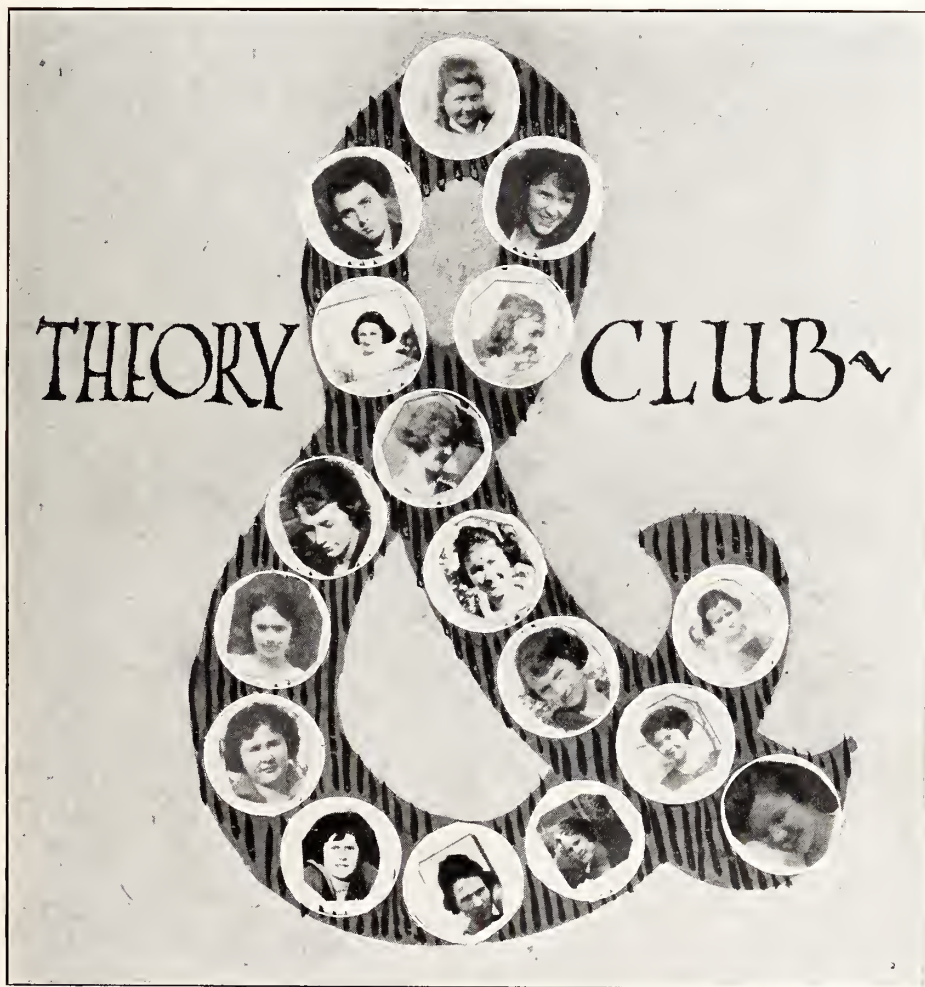
The VOLUNTEER BAND~



The ALABAMA CLUB~



The Edelweiss 1921





Cold Eight

MOTTO: Freeze Never.

COLOR: Blind.

FLOWER: Self-rising.

OFFICERS

FRANCES PITTS.....	<i>President</i>
MARGARET CLARK	<i>Vice-President</i>
KATHRYN SHUTE	<i>Secretary</i>
MARY LEE CROWELL.....	<i>Treasurer</i>

MEMBERS

HELEN BILES
 MARY LEE CROWELL
 ADELE CROSS
 MARGARET CLARK

FRANCES PITTS
 LOIS ROGERS
 KATHRYN SHUTE
 KATHRYN SHUFORD





The Edelweiss 1921



Lucky 13

MEMBERS

HELEN BILES
IDA BERTHA BAUERSFELDT
MARGIE BENOY
MARGARET CLARK
MARY LEE CROWELL
ADELE CROSS

BEULAH HOLMES
RUTH HENDERSON
KATHRYN IVEY
LOIS ROGERS
KATHRYN SHUTE
KATHRYN SHUFORD

FRANCES PITTS

(97)



The Edelweiss 1921



Kama Klub

MEMBERS

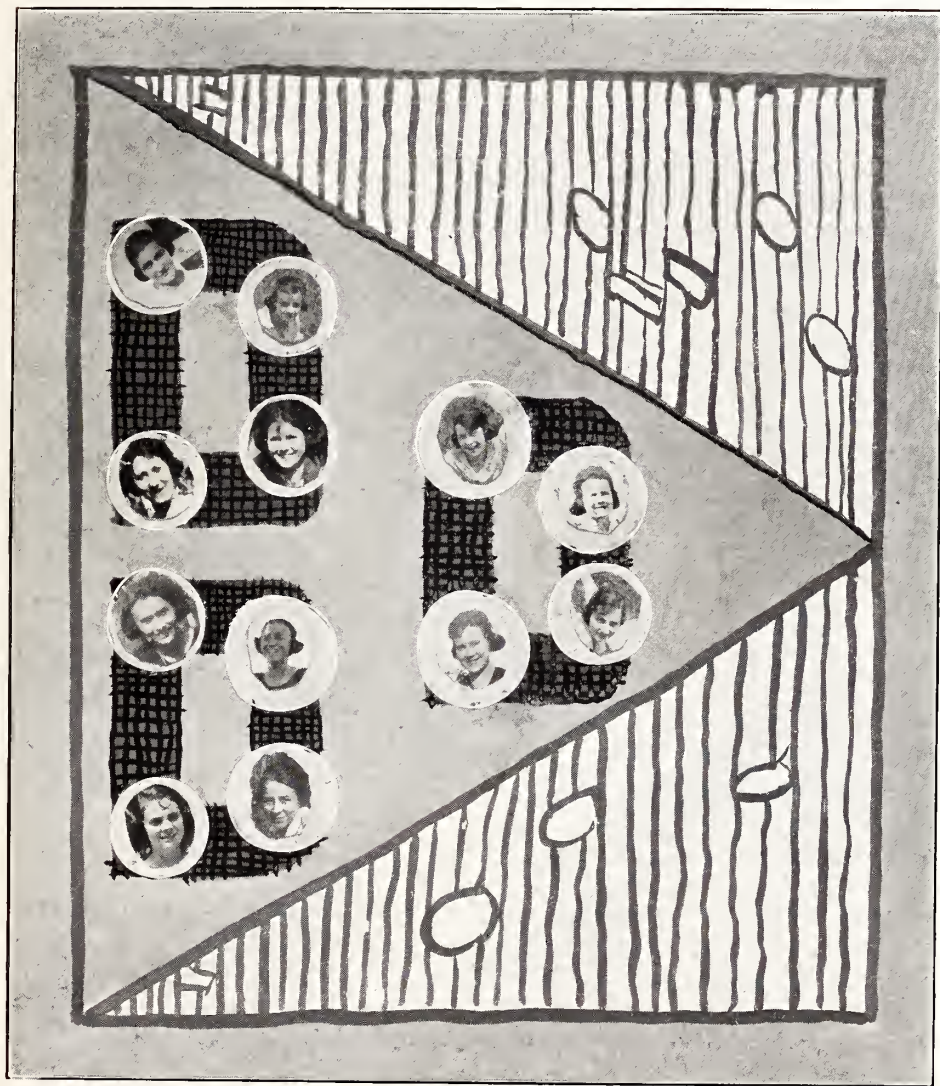
"PEGGY" CLARK
"KAT" SHUFORD

"KATTIE" SHUTE
"SMILEY" CROWELL





The Edelweiss 1921





(100)





Athletics



The Edelweiss 1921~



(101)





Athletic Association Officers

HESSIE BOGER, PRESIDENT

ANNIE THOMAS, SECRETARY

MYRTLE WILLIAMSON, VICE-PRESIDENT

IDA BERTHA BAUERSFELD, TREASURER





Varsity 1920-21

BENOY	<i>Captain</i>
BACON	<i>Jumping Center</i>
BROWN	<i>Side Center</i>
MONTGOMERY	<i>Side Center</i>
E. BROWN	<i>Guard</i>
ANDERSON	<i>Guard</i>
BERRYHILL	<i>Guard</i>
BENOY	<i>Forward</i>
DAVENPORT	<i>Forward</i>
BAUERSFELD	<i>Forward</i>

SCHEDULE

April 18	Field Day
May 16	Awarding of Cup

BASKET BALL

November 8.....	Score: Queens 5, Lenoir 4
November 17.....	Score: Seniors 18, Jazz 29
November 29.....	Score: Queens 20, Y. W. C. A. 22
December 6.....	Score: Queens 10, Lenoir 16

TENNIS

March 3.....	Seniors vs. Juniors
March 6.....	Juniors vs. Sophomores
March 18.....	Sophomores vs. Freshmen
March 27.....	Freshmen vs. Fitting School





Varsity Basketball Team

MARGIE BENOY.....Forward
 RUTH DAVENPORT.....Forward
 JANICE MONTGOMERY.....Jumping Center
 SUSIE MAE BROWN.....Side Center
 IDA BERTHA BAUERSFELD.....Side Center
 ETHLEEN BERRYHILL.....Guard
 MARGARET ANDERSON.....Guard
 EDITH BROWN.....Guard





Senior Basketball Team

- MARGIE BENOY.....Forward
- FLORA BRASINGTON.....Forward
- RUTH HERRON.....Center
- ANNIE THOMAS.....Guard
- ELIZABETH FINLEY.....Forward



The Edelweiss 1921



“Jazz” Basketball Team

- EULA WHITLEYForward
- MARIE SMITH.....Forward
- MARGARET SMART.....Center
- MARGARET ANDERSON.....Guard
- IDA BERTHA BAUERSFELD.....Guard



The Edelweiss 1921



Freshman Basketball Team

RUTH DAVENPORT.....	<i>Forward</i>
MINNIE BLAIR PORTER.....	<i>Forward</i>
JANICE MONTGOMERY.....	<i>Jumping Center</i>
SUSIE MAE BROWN.....	<i>Side Center</i>
ETHLEEN BERRYHILL.....	<i>Guard</i>
MAY BELLE BROWN.....	<i>Guard</i>
JENNIE SUE DE ARMON.....	<i>Substitute</i>
EDITH BROWN.....	<i>Substitute</i>
MINNIE TOMLINSON.....	<i>Substitute</i>





Special Basketball Team

SUSIE MANSON.....	<i>Forward</i>
KATHRYN SHUFORD.....	<i>Forward</i>
MARION ELLIOT.....	<i>Center</i>
RUTH HENDERSON.....	<i>Center</i>
LAURA CHANDLER.....	<i>Guard</i>
ELIZABETH DENDY.....	<i>Guard</i>



The Edelweiss 1921



Fitting School Basketball Team

ANNIE PARKS MOORE.....Forward
ANN HARDIE.....Forward
ELIZABETH McMURRAY.....Jumping Center
VIRGINIA ABBOTT.....Side Center
VIRGINIA BELL.....Guard
RUBY CAIN.....Guard





The Edelweiss 1921



Tennis Club

SENIORS

ELIZABETH FINLEY

KATHRYN SHUTE

JUNIORS

MARGARET ANDERSON

IDA BERTHA BAUERSFELD

SOPHOMORES

MARGARET SMART

HENRY BELK

FRESHMEN

ROSA MOYE MERCER

LOIS ROGERS

SPECIALS

ADELE CROSS

KATHRYN SHUFORD

FITTING SCHOOL

RUBY CAIN

VIRGINIA ABBOTT



Field Day

SWEDISH DRILL

The Swedish Drill was done by the Gymnasium Class and a prize given to the front squad for being the best drilled

DUMB BELL RELAY
College vs. Fitting School

THREE LEGGED RACE
Contest between Classes

CHARIOT RACE
College vs. Fitting School

SPOON AND EGG RACE
College vs. Fitting School

DUMB BELL HUSTLE
College vs. Fitting School

TUG O' WAR
Contest between Classes

CRAB RACE
Contest between Classes





The Edelweiss 1921

College Yells

Q. C. girls can sure play ball,
'N' everything!
Q. C. girls can beat 'em all
In everything;
And when they start into a game,
They live up to their name—
You just can't down 'em,
You can't get 'round 'em.
They make the rest look tame.

Q. C. girls got lots of pep,
'N' everything;
That's the way they won their rep
'N' everything;
And we'll agree without a fuss
Blue and Blue are the colors for us.
They've got the rep,
They've got the pep,
They've got the team,
'N' everything.

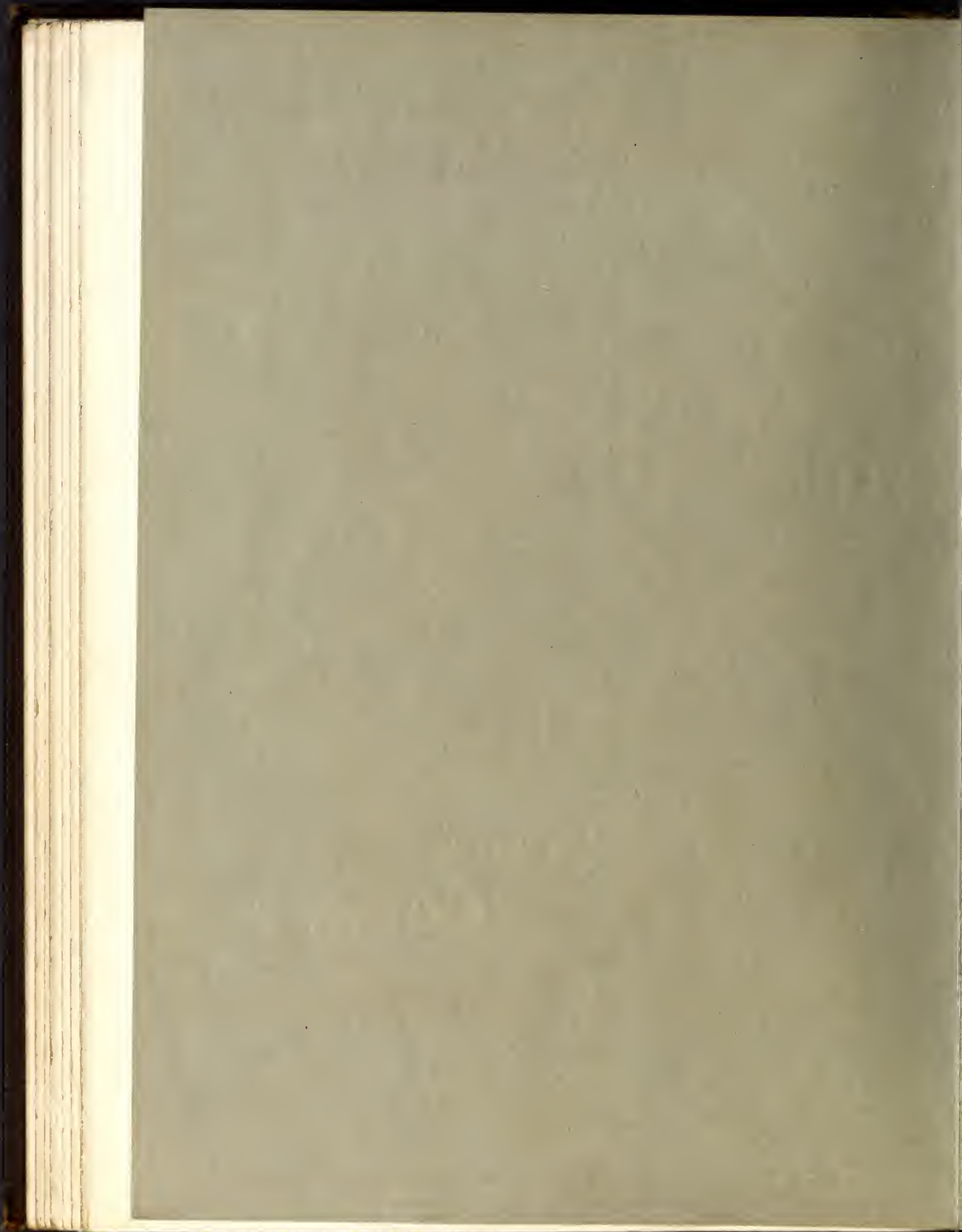
Queens Girls, you sure can play.
You'd win in every fray.
You've got the bestest team that we ever saw.
We'll always root for you,
We'll back the blue and blue.
Queens College girls can sure play ball.

Hail, Queens, Hail!
Hail, Queens, Hail!
O College best of all the rest—
Her praises never fail.





Wise &
Otherwise



The Edelweiss 1921
College Statistics

"O, wad some power, the giftie gie us,
To see ourselves as ithers see us."

"Of surpassing beauty and in
the bloom of youth"

"Here's to the one we love
best"



Margaret
Anderson
Preblist

Ruth
Heron
Most
Popular



Francis
Pitts

Most
Attractive
Biggest
Mix

"For contemplation some are formed;
For coyness she, and sweet attractive grace"





The Edelweiss 1921



"The glass of fashion and the mould of form"

Henry Belk
Most-stylish

"Divinely tall and most divinely tall"

Margaret Mackey
Handsomest

In thy face I see
The map of honor, truth and loyalty"

Mary Lee Crowell
Most-loveable
Most-sincere



The Edelweiss 1921~

"A merry heart goes all the way,
A sad tires in a mile"

Kizzie Oehler
Jolliest



"A thought is original though
you have said it a thou-
sand times"

Laurie Dowling
most-
original



"Wit is born with a man"

Faye Sloan
wittiest



The Edelweiss 1921~



"Of me you may write in the
blackest of ink.
I say what I mean, and I
know what I think"

Peggy Clarke
Most
Independ-
ent.
⊗

"Studios let her see
And hold communion with
the mighty dead"

Edna Deaton
Most
Studios
⊗

"She is a tiny thing;
She is a winsome thing;
She is a bonnie thing"

Adele Cross
Most Winsome
Daintiest
⊗



The Edelweiss 1921

"There is a dignity to be
observed in the perform-
ance of every act
of life"

Katherine Wiggins
Most Typical Senior
Most
Dignified



"Who mixed reason with
pleasure
And wisdom with mirth"

Helen Johnson
Most Typical
College
Girl



"She is the day star of our
hearts,
Consoling, guiding, gladden-
ing all"

Myrtle Williamson
Most Typical Junior
Most Influential
Best
Allround





The Edelweiss 1921



"O, so light a foot
 Will ne'er wear out the ever-
 lasting flint"

Lois Rogers
Most Typical Freshman
Best Dancer
Cutest

"Childhood shows the woman
 As morning shows the day"

Annie Parks Moore
Most Typical
Fitting School
Student

"Be wisely worldly but not
 worldly wise"

Helen Hickson
Most Typical
Sophomore



The Edelweiss 1921



Miss Essie Johnston ~ most popular member of the faculty ~





Social Calendar

SEPTEMBER 8, 1920-MAY 17, 1921

SEPTEMBER—

- 8th—Students begin to arrive
- 10th—Formal opening
- 16th—Y. W. C. A. gave a “get-together party” in Gym for new girls
- 22d—“Masquerade Ball” given by old girls to new girls
- 28th—Y. W. C. A. entertained with a marshmallow roast on back campus

OCTOBER—

- 3d—Y. W. C. A. Recognition Service
- 9th—Literary Societies’ Initiation
- 16th—Davidson-Wake Forest football game
- 25th—Enrico Caruso Concert
- 29th—Queens Alumnae Association presented Geraldine Farrar in concert at Auditorium
- 30th—Davidson Band Concert
- 30th—Davidson-Citadel football game

NOVEMBER—

- 1st—Queens-Lenoir basketball game
- 8th—Memorial Service for Our Boys, who made the supreme sacrifice for their country
- 11th—Armistice Day—Holiday
- 16th—Carolina Glee Club and Reception
- 17th—Recital—Miss Carlotta Mitchell, Reader; Miss Margery Martin, Pianist
- 20th—Basketball game—Y. W. C. A.-Queens
- 25th—Thanksgiving—Holiday—Big dinner





The Edelweiss 1921

DECEMBER—

- 3d—Trinity Glee Club and Reception
- 12th—Christmas Carol Service by Queens Glee Club
- 14th—Carolina Day—Program by Glee Club and Dramatic Club
- 16th—Christmas Dinner and Party in Gym
- 17th—Christmas Holidays Commence

JANUARY—

- 4th—Work begins for New Year
- 18th-24th—Mid-term Exams
- 25th—Second Term begins
- 29th—“Stunt Night”
- 29th—Davidson vs. N. C. State—Basketball game

FEBRUARY—

- 14th—Sophs entertain Seniors—Luncheon at “Rose Garden”
- 14th—Davidson Glee Club and Reception
- 28th—Plays by Dramatic Club

MARCH—

- 10th—Seniors entertained by their Sponsor
- 14th—Juniors give Dinner in honor of Seniors
- 17th—St. Patrick’s Day Dinner
- 22d—Operetta—Given by Queens Glee Club
- 24th—Senior Tea given by Senior Domestic Science Class
- 25th-28th—Easter Holidays
- 28th—Davidson’s Field Day
- 30th—Queens Field Day
- 31st—Breakfast for Faculty given by Senior Domestic Science Class



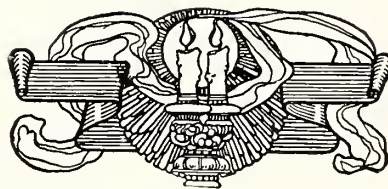


APRIL—

- 1st—General Celebration
- 4th—Plays by Dramatic Club
- 8th—Graduation Recital of Miss Agnes Lynn Buchannan
- 12th—Luncheon for Faculty, given by Senior Domestic Science Club
- 18th—Miss Margaret Clark's Graduate Recital
- 22d—Senior Domestic Science Class entertain the Trustees with a dinner
- 25th—Senior Expression Recital—Misses Pitts, Benoy, Finley
- 28th—Picnic for Sophomores by the Seniors

MAY—

- 1st—May Day
- 1st-7th—Senior Exams
- 6th-7th—Musical Festival
- 10th-14th—Final Exams
- 10th-14th—Tennis Tournament
- 14th—Open meeting of Pi Delta and Gamma Sigma Societies
- 15th—Baccalaureate Sermon
- 16th—Class Day Exercises
- Grand Concert
- 17th—Graduating Exercises
- Alumnae Luncheon



The Edelweiss 1921

Campus Views



(123)





The Edelweiss 1921~



MAY
DAY

MARGARET ANDERSON
QUEEN OF MAY

ROSEBUD CRUMP
MAID ~

MARGARET MACKEY
MAID ~

CORDELIA
HENDERSON
MAID

HENRY BELK
MAID ~





The Edelweiss 1921~



MAY
DAY

MARION ELLIOT
MAID ~

FRANCIS PITTS
MAID ~

ADELE
CROSS
MAID of
HONOR

DOROTHY POWELL
MAID ~

IDA BERTHA BAUERFELD
MAID ~



The Edelweiss 1921

Characteristic Pictures of Seniors



VIRGINIA ATKINS

*"I'm sure care is an enemy to life"
"A fair exterior is a silent
recommendation"*



HESSIE BOGER

*"A child of knowledge, but by her
unspoiled"
"It doesn't pay to worry; things are
bound to happen anyway"*





The Edelweiss 1921



MARCIE BENOY

*"Nothing great was ever accomplished
without enthusiasm"*

*"She is an example all complete
of modest friend and brave Ath-
lete.*

*A laurel wreath on her brow we
would place
For in basketball she leads the race"*



LAVINIA BOYER

*"For if she will, she will, you may
depend on't,*

*And if she won't, she won't, so there's
an end on't"*

*"Even though vanquished, she could
argue still"*





The Edelweiss 1921~



AGNES L. BUCHANNAN

*"Full well they laughed with counter-
feited glee
At all her jokes, for many jokes had
she"
"If music be the food of love—
play on"*



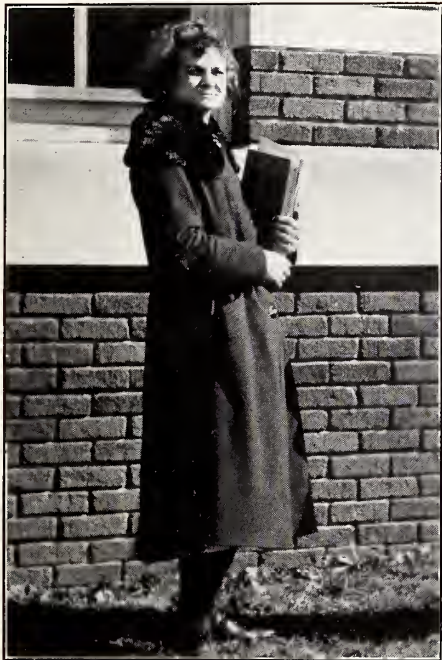
ADA BUICE

*"Her voice was ever sweet and low
An excellent thing in woman"
"A handful of common sense is worth
a bushel of learning"*



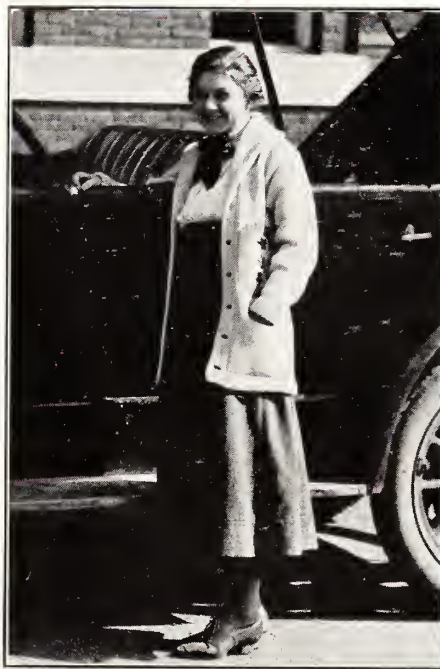


The Edelweiss 1921



MARGARET CLARK

*"Wilt thou have music? Hark! Apollo
plays,
And twenty caged nightingales do
sing"
"Give me true friends and music, and
life will be a pleasure"*



LAURIE DOWLING

*"Well versed in books and pleasant in
herself"
"And I have felt a presence that dis-
turbs me with the joy of
elevated thoughts"*



The Edelweiss 1921



GEORGIA EDWARDS

*"Act well thy part, there all the
honor lies"
"I probably never will grow up"*



ELIZABETH FINLEY

*"Impulsive, earnest, quick to act
And make her generous thought a
fact"
"To be good rather than conspicuous"*





The Edelweiss 1921



RUTH HERRON

*"She knows the science of cooking
Just like an open book.
She's handy in the kitchen and she'll
Make him a good cook"
"And when a man's in the case,
You know, all other things give place"*



SARAH HOOD

*"Worry never made men great
Why should I worry?"
"Hail, fellow, well met"*



The Edelweiss 1921



HELEN JOHNSON
*"Do you seek her equal?
None is, except herself"
"Education and independence go
hand in hand"*



MARGARET MAY
*"Smooth runs the water
Where the brook is deep"
"Angels are blest with artistic
temperaments"*





The Edelweiss 1921



KIZZIE OEHLER

*"She had the genius to be loved"
"A smile is the trade-mark of a
happy soul"*



FRANCES PITTS

*"She is pretty to walk with,
Witty to talk with,
And pleasant to think on"
"All compliments to her are trite.
She has adorers right and left"*

The Edelweiss 1921



KATHRYN SHUTE

*"She takes most delight
In music instruments and poetry"
"One who could beguile the time
With many a good and tripping
rhyme"*



ANNIE THOMAS

*"Discretion of speech is more than
eloquence"
"Cookery is become an art, a noble
science,
Cooks are ladies"*





The Edelweiss 1921



KATRINE WIGGINS

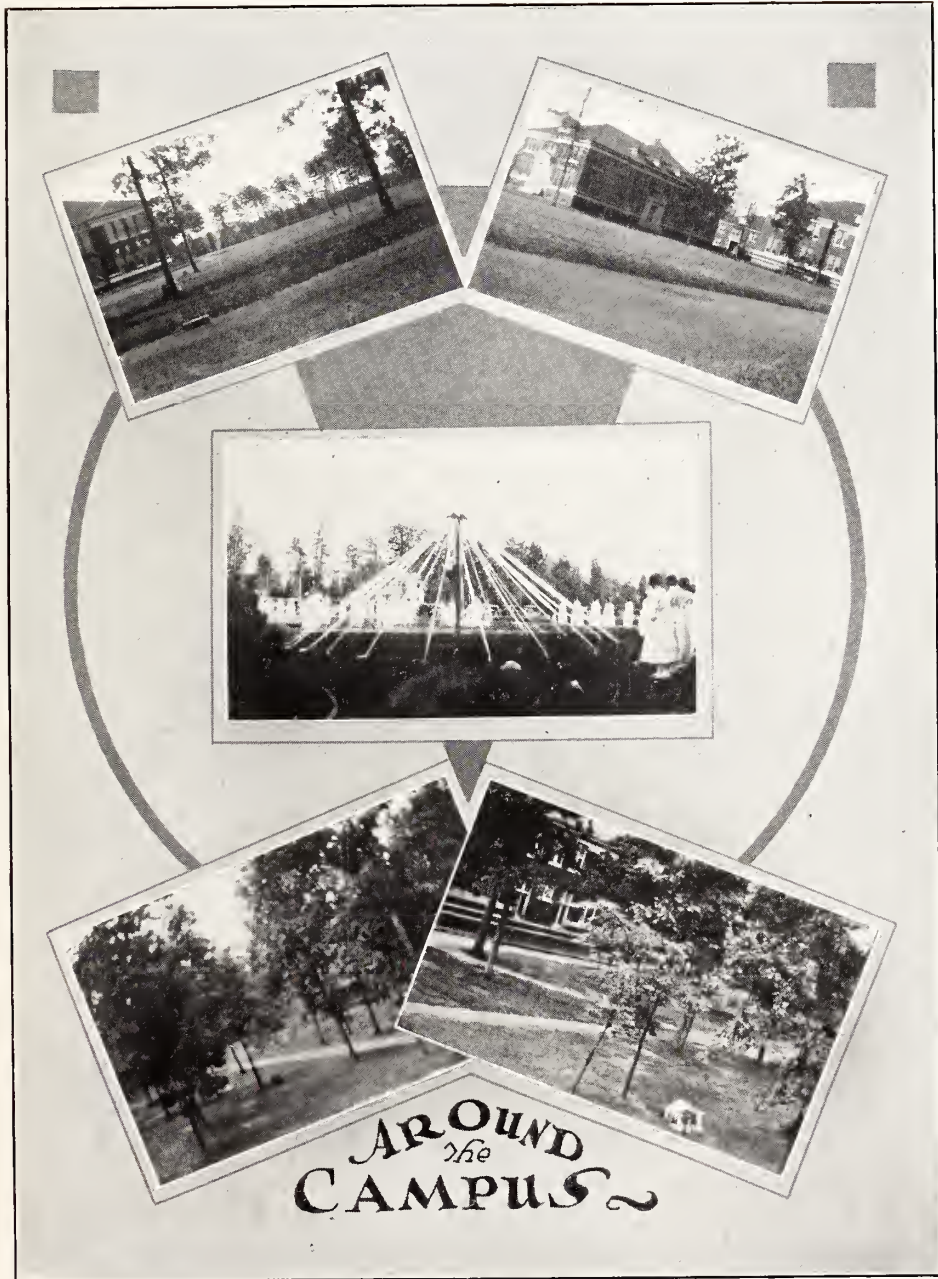
*"And still the wonder grew
That one small head could carry
All she knew"
"God bless the man who first invented
sleep"*



The Edelweiss 1921



The Edelweiss 1921



(137)



The Edelweiss 1921~



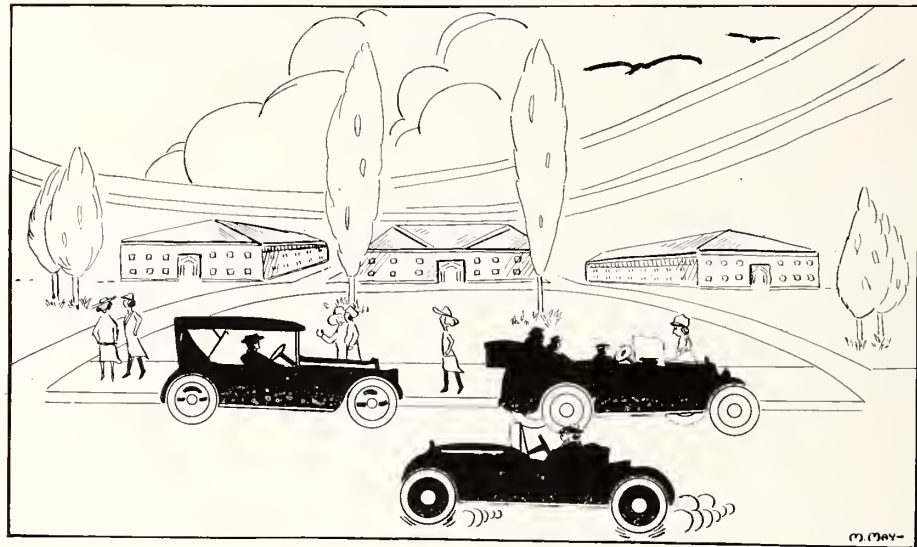


The Edelweiss 1921~





The Edelweiss 1921



“Tadpoles” Appeal

*Backward turn backward oh time in your flight
And show us a maiden dressed proper and
right.*

*We are so weary of the switch and the rat,
Huge puffs and Marcells and such things as
that,*

*Wads of jet hair in a horrible pile
Stacked on the head to the height of a mile.
Something is wrong with the girlies, we fear,
Oh, show us the maids as they used to appear.*

*Give us the girls that we once knew of yore
Whose curls did not come from a hair-dressing
store,*

*Maidens who dressed with a sensible view,
Just as your mothers intended them to,
Give me a girl with a will of her own
Who does not fall for each fad that is known;
Feminine styles getting fiercer each year,
Oh, show us the girls as they used to appear.*

*Hours in classes all remind us
We can make our lives sublime,
And by asking foolish questions
Take up all the teacher's time.*

Dot Lee (on English class): Miss Chubbuck, did Marlowe copy his Faustus after Goethe's Dr. Faust?

Ruth Herron (looking for Hydroidic Acid in Chemistry Laboratory): Miss Stone, where is the Idiotic Acid?

Annie Robinson (discussing earthworms in Biology Class): Has a human being a crop and a gizzard?

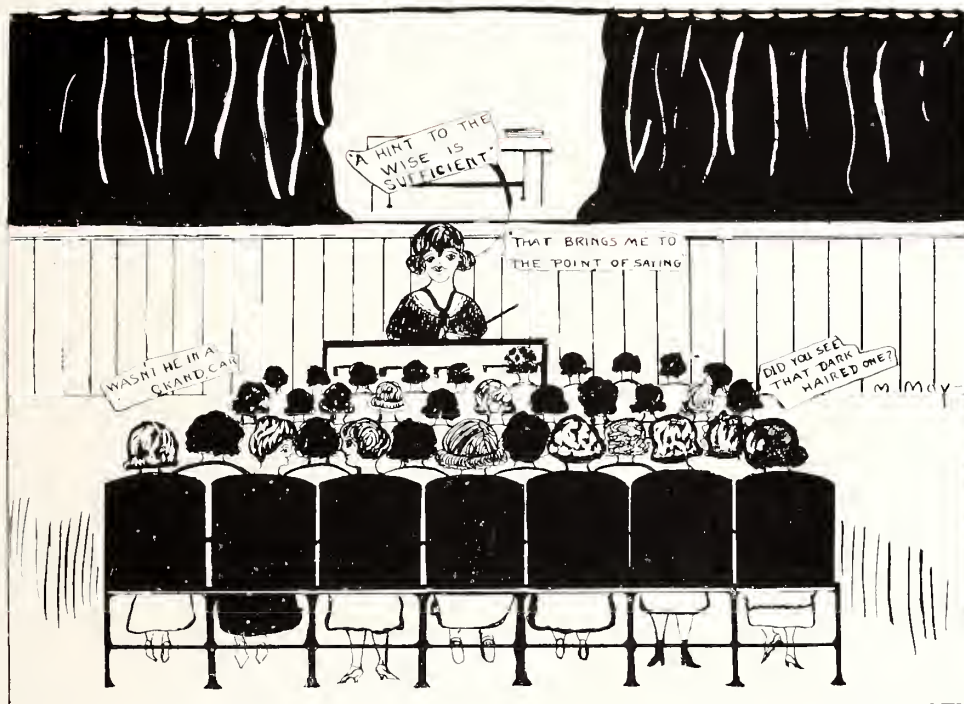
Myrtle Williamson (in Psychology Class): Is love at first sight an Instinct?

Jennie Sue De Armon: Are cannibals parasites?

Dorothy Powell: Is the craw of a chicken on the same plan as the place where the camel carries his water?



The Edelweiss 1921



Come all together
Who want to hear
The Monday Morning Conference
In our College career.

"Go not to the little store,
Walk not on the front,
Live up to the standard, girls,
And avoid the 'tad-pole' junk."

Miss Naive (in hall after light bell): "Sh—sh."

Mary Welker (spending night with Faye Sloan): "Faye, does that teacher snore like that all night? I don't see how you sleep."

Mrs. Miller: Where is your lip stick (red or white) you bought at Liggett's the other day?

Mildred Morse: "Madame, have a heart when you make out our examination questions."

Madame (in indignant tone): "How do you expect me to make out examination questions if I didn't have a heart?"

Junior: Why don't "tadpoles" thrive in Queens Aquarim?

Soph: Because of the cold temperature.

Junior: No, because they're always kept in hot water!

Miss Morefield (drawing and stating a proposition): Two lines to same straight line are and can never meet.

Student: Anybody that had any sense could see that.

English Teacher: Who was Bacon's wife?

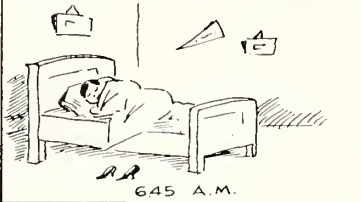
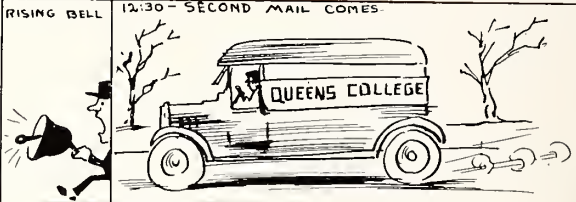
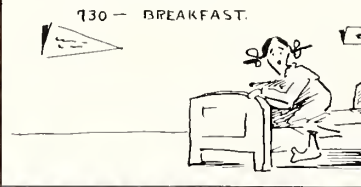





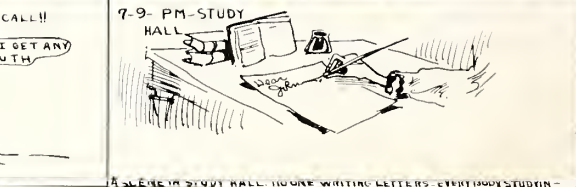
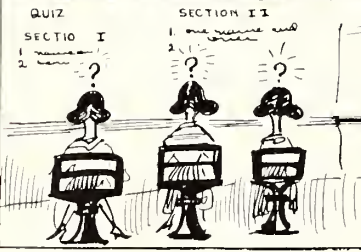
Helen Hickson: Ann Hathaway.

Elizabeth Abernathy (on English paper): The principal dates in George Eliot's life are: Born 1819, published first novel 1857, died 1800.





The Edelweiss 1921

 <p style="text-align: center;">6:45 A.M.</p>	<p style="text-align: center;">RISING BELL</p> 
<p style="text-align: center;">7:30 - BREAKFAST</p> 	<p style="text-align: center;">10 O'CLOCK LUNCH</p> <p style="text-align: center; font-size: 2em;">SOUP</p> 
<p style="text-align: center;">7:40 - EVERY BODY LATE TO GRITS</p> <p style="text-align: center;">GRITS</p> 	<p style="text-align: center;">3:30 P.M. - GYM</p> <p style="text-align: center;">ATTENTION EVERY BODY</p> <p style="text-align: center;">USE YOUR BRAINS IF YOU HAVE ANY</p> 
<p style="text-align: center;">MRS MILLER INSPECTS</p> <p style="text-align: center;">GIRLS YOU NEED MUST WASH THIS BATH TUB</p> 	<p style="text-align: center;">11 O'CLOCK</p> <p style="text-align: center;">FORBIDDEN DISTRICT</p> <p style="text-align: center;">MRS. MILLER'S HOUSE</p> 
<p style="text-align: center;">8:30 MAIL CALL!!</p> <p style="text-align: center;">DID I GET A PAPER?</p> <p style="text-align: center;">DID I GET ANY RUTH?</p> 	<p style="text-align: center;">7-9 P.M. - STUDY HALL</p> 
<p style="text-align: center;">ENGLISH CLASS ROOM 10 O'CLOCK A.M.</p> <p style="text-align: center;">QUIZ SECTION II</p> <p style="text-align: center;">SECTION I</p> <p style="text-align: center;">1. _____</p> <p style="text-align: center;">2. _____</p> 	<p style="text-align: center;">10 O'CLOCK P.M.</p> 





The Edelweiss 1921

Hints To Students

If things don't go our way, we must go the way of things.

If you are afraid of revealing your ignorance on exams, hand in blank papers.
(Ask Faye Sloan how this works).

Don't appear too wise in class room, the teacher may discover that you know more than she does.

Don't get up at 6:00 a. m. to study, just think the teachers may not meet their classes.

If you don't know the question asked, answer the one you do know.

Keep on parallel lines with the one directly in front of you. By doing so you may chew your gum unnoticed.

They tell of the old-fashioned gentleman
Who bowed when a lady he'd meet.
But give me the up-to-date tadpole
With a Ford to ride 'round the street.

A few more weeks, then we'll be free
From this old life of misery.
No more flirting with tadpole trash,
No more listening for the bells,
No more "rags"—to give us —!!!

We have coffee black as black can be,
Soup without a single pea,
Bread—as stale as stale can be,
Sugar (?) there is none to see,
Cheese—old enough to talk,
Butter—strong enough to walk,
Beef—too tough for carving,
And the "Queens" girls still are starving.
J. P. & M. B.

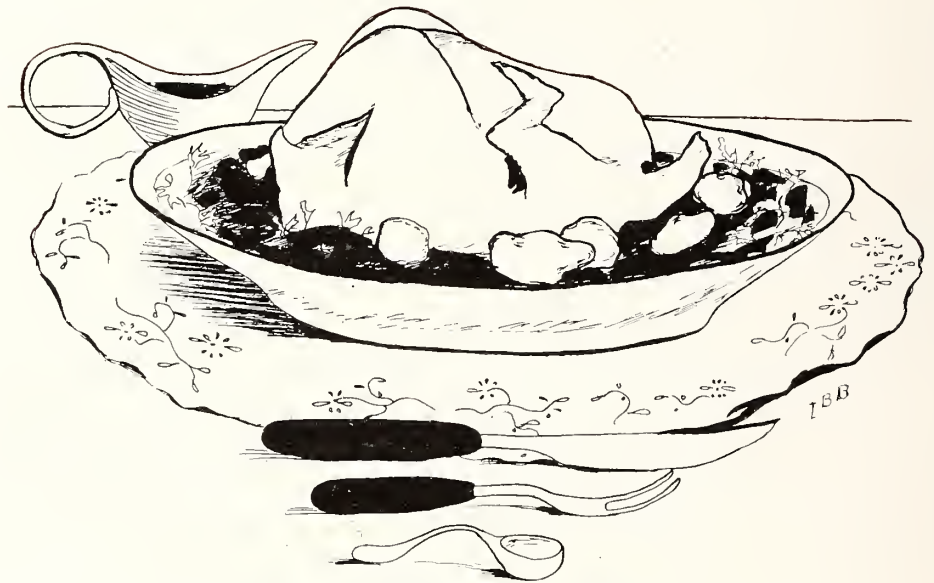
You can always tell a Senior,
For she walks so dignified;
You can always tell a Freshman
By the way she struts and strides.

You can always tell a Junior
By her worried looks and such;
You can always tell a Sophomore,
But you cannot tell her much.



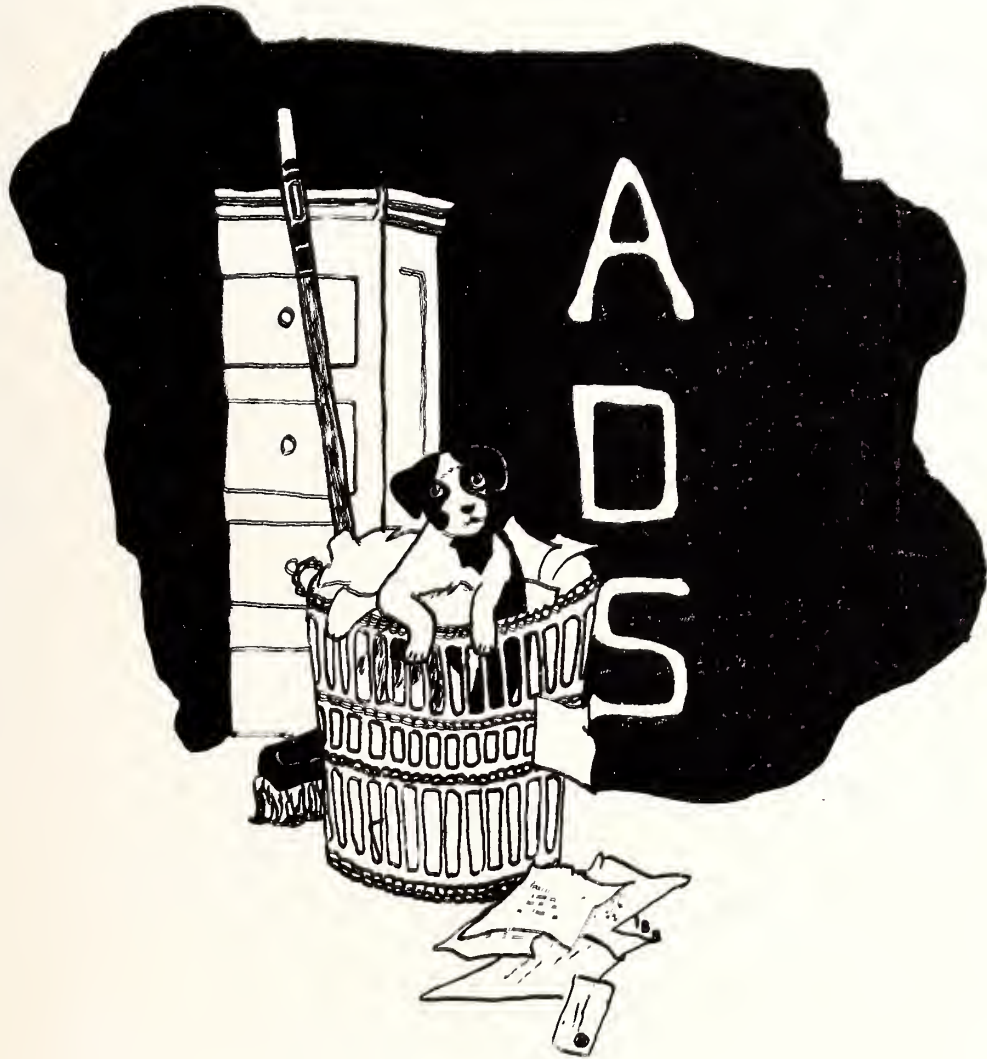
(143)

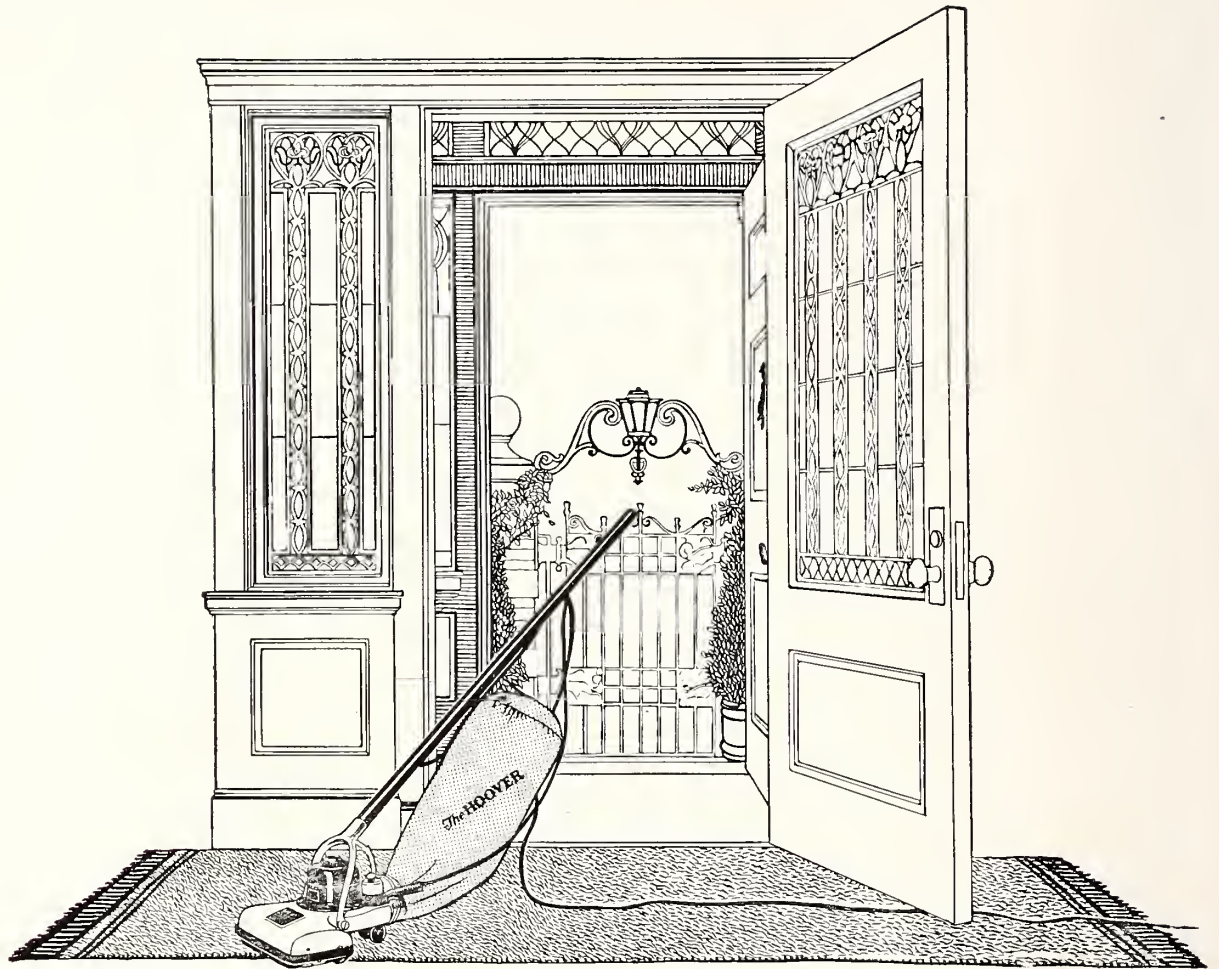




**THE
END**







The HOOVER

IT BEATS... As It Sweeps As It Cleans

The Hoover Suction Sweeper Co.

229 So. Tryon St. Charlotte, N. C.

J. B. IVEY & CO.

LOCAL DEALER

Independence Trust Company

Total Resources, \$6,000,000.00

Your Checking Account Solicited, Whether Large or Small

4%

On Savings or Certificates of Deposit

*Make Our Ladies' Department Your
Headquarters While in Town*

.....

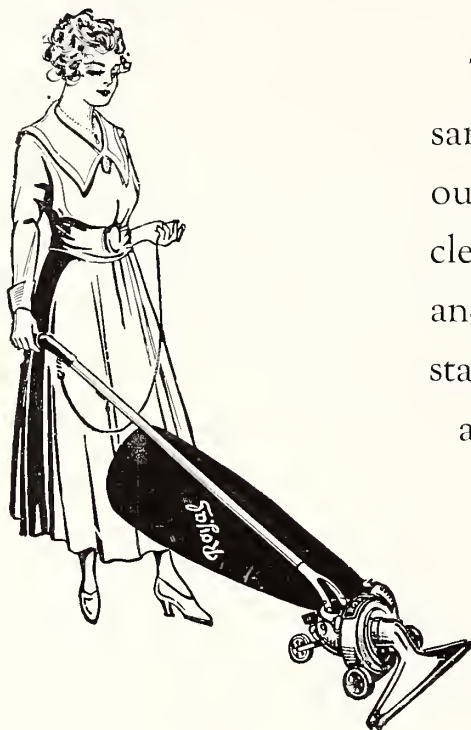
OFFICERS

J. H. WEARN, Chmn. of the Board
W. M. LONG, Vice-President
W. A. WATSON, Vice-President

R. S. SMITH, Ass't Cashier
THOS. P. MOORE, Ass't Cashier
A. R. SARRATT, Ass't Cashier

J. H. LITTLE, President
E. O. ANLERSON, Vice-President
E. E. Jones, Cashier

CLEANS BY AIR ALONE



The easiest, most
sanitary, and thor-
ough method of
cleaning the home
and keeping it con-
stantly sweet, clean,
and germ-free is
with a

ROYAL

QUALITY SERVICE

ELECTRIC CLEANER

CLEANS WITHOUT PULLING THE NAP

For Sale by

Southern Public Utilities Company

Phone 2700

426-430 S. Church Street

HOME REAL ESTATE & GUARANTY COMPANY

J. ARTHUR HENDERSON, President



Real Estate, Rents

Mortgage Loans

Insurance, Investments

Building



219 N. TRYON ST.

CHARLOTTE, N. C.

QUEENS COLLEGE

. . . CHARLOTTE, NORTH CAROLINA

Five splendid buildings. One of the best equipped school plants in the South. Buildings only two stories high, obviating all danger of fire.
Bath room to every four pupils.

Teachers selected for personal fitness as well as scholarship.
Four-year College course, leading to A. B. and B. S. degrees.
Three years Fitting School, preparing for College.
Special course in methods and principles of teaching offered to those who wish to teach.

LARGE MUSIC SCHOOL

DR. J. R. NINNISS, Director

Royal Academy, London. Pupil of and assistant to Herr Louis Dietl, Conservatory of Music, Vienna

A HOME SCHOOL

Motto: "Christian Women for Christian Homes"

The School, therefore, emphasizes every influence that refines, cultivates and sweetens womanly character

SEND FOR CATALOGUE

WM. ANDERSON, Registrar

Designing & Printing College Annuals

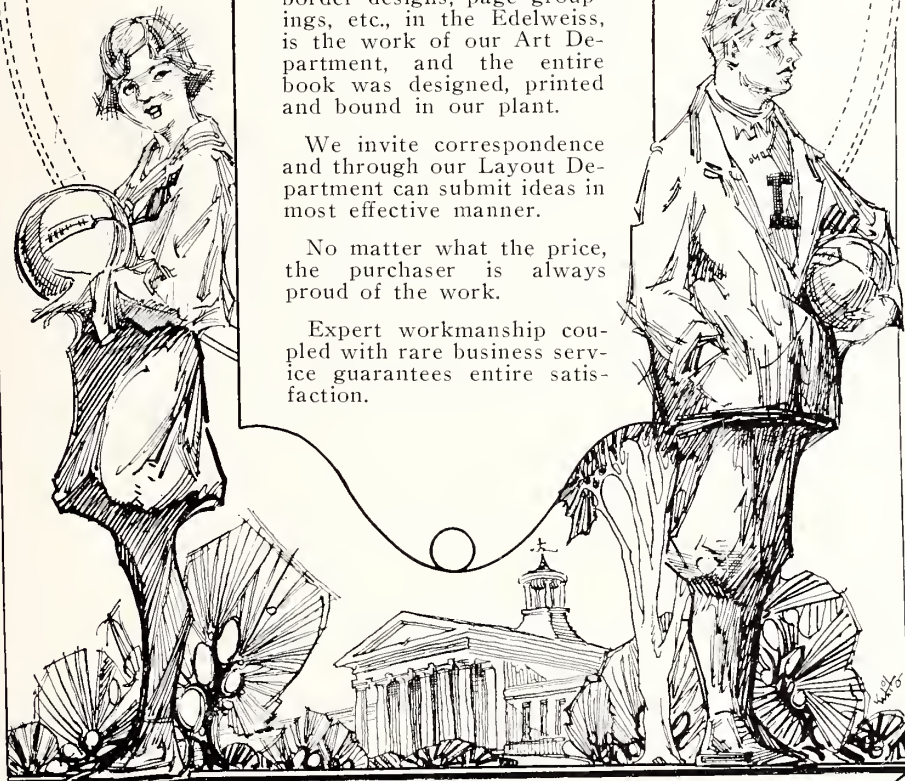
WITH our Art Service, equipment and facilities we are prepared to produce the Best in College Annuals.

The art work, including border designs, page groupings, etc., in the Edelweiss, is the work of our Art Department, and the entire book was designed, printed and bound in our plant.

We invite correspondence and through our Layout Department can submit ideas in most effective manner.

No matter what the price, the purchaser is always proud of the work.

Expert workmanship coupled with rare business service guarantees entire satisfaction.



PRESBYTERIAN
STANDARD
PUBLISHING
CO.

CHARLOTTE, N. CAROLINA

Phone 1511

Corner N. Tryon & 7th Sts.

Cooke's Studio

L. C. COOKE, Proprietor

Specialists in

Art Portraiture by Photography

Photographs Made

Night or Day



Office Hours: 8:30 to 6 P. M. Daily

Sundays by Appointment Only

CHARLOTTE, N. C.

AN APPRECIATION

¶We want to take this opportunity to say "Thank you very much" to the Queens girls for all the times they have been to see us at our store.

¶Every person connected with Ivey's is always delighted to be of any possible service to the faculty and students of Charlotte's admirable woman's college.

J. B. IVEY & COMPANY

W. H. BELK
Pres.

J. R. WINCHESTER, Jr.
Sec'y & Treas.

H. WINCHESTER
V.-Pres.

Winchester Electric Co.

FIXTURES

ANYTHING ELECTRIC

OLDEST QUICKEST BEST

ELECTRIC

Boudoir Irons
Boudoir Lamps
Reading Lamps
Floor Lamps

ELECTRIC

Curling Irons
Vibrators
Heating Pads
Violet Ray Machines

Everything Electrical

MAIL ORDERS APPRECIATED

11 East Trade St.

Phone No. 3026

Mattresses at Factory Prices

To meet the increasing demand for Fine Mattresses, we have added these three numbers to our line of "Slumbergood" Products:

"QUEEN CHARLOTTE" FELT MATTRESSES

This is an unusually splendid mattress of brown felt; deeply tufted, roll edge, covered in beautiful art ticking. Designed for comfort, warmth, attractiveness and durability. For the equal of this 45-pound mattress you would be compelled to pay at least \$15.00 in any retail store. You can buy it direct from us for only-----\$7.50

"PRIDE OF CHARLOTTE" FELT MATTRESS

Combining highest quality of materials and workmanship with unexcelled durability and beauty, we claim that this 50-pound Brown Felt Mattress has no equal on the market and is a regular \$25.00 value. You can secure it with rolled edge or full imperial finish direct from us for---\$12.50

SILK FLOSS (Kapoc) MATTRESSES

This is the most wonderfully fine and luxurious mattress of modern times. Pure, vegetable, odorless kapoc is made into SILK FLOSS mattresses by our process, in a way that leaves it always soft and restful to the body. Our high grade fancy art tick is used on this mattress, and we guarantee it to please the most exacting. Weighs 40 pounds, and retails at \$35.00. Our price, only-----\$17.50

Sanitary Bedding Co.

Manufacturers of High Grade Bedding

411-425 South College, Corner First

Charlotte, N. C.

Phones: 441 and 442

Night Call: 1146-W

SCHOLTZ

The FLORIST

INCORPORATED



8 North Tryon Street

Charlotte, North Carolina

Charlotte Hardware Company

Before making your spring and summer purchases call and see our stock and get prices. We carry a full line of

**Oil Cook Stoves, Freezers, and
Everything for Home Canning**

Charlotte Hardware Company

Phones 1505-1506

30 E. Trade St., Charlotte, N. C.

Merchants & Farmers National Bank

5 West Trade Street
Charlotte, N. C.



We respectfully invite your Banking
Business and assure you in advance of
every accommodation consistent with
prudent banking

W. C. Wilkinson, President

J. A. Stokes, Cashier



Capital \$200,000.00

Surplus & Profits \$400,000.00

The Princess Grand

The increasing popularity of the small grand has paralleled the development of the *Princess*. In tone, quality, design and finish, it has set a standard for its type. You should know this delightful grand. Our new catalogue describes it and all our grands, uprights, and players. *Write for it*

Ivers & Pond PIANOS

are of but one quality,---the best. They are used in 400 leading American Educational Institutions and 60,000 homes.



FOR FURTHER INFORMATION WRITE

PARKER-GARDNER COMPANY

Charlotte, N. C.

WE WISH TO THANK OUR VARIOUS FRIENDS OF
QUEENS COLLEGE

for their patronage during the past session, and
extend to those returning next year a most cordial
invitation to use the facilities offered by this Bank
at any time the occasion arises.

AMERICAN TRUST COMPANY

MEMBER FEDERAL RESERVE SYSTEM

14 and 206 South Tryon St.

Charlotte, N. C.

Capital, Surplus and Profits \$1,850,000.00

W. H. BELK
Charlotte, N. C.

BELK BROS.
Department Stores
Charlotte, N. C.

DR. J. M. BELK
Monroe, N. C.

We solicit your patronage on all kinds of "Women's and Misses' Wearing Apparel," We handle more Standard High Class "Women's Ready-to-Wear," both outer and under garments, than any store in the Carolinas. Buying for 28 stores we get better values, therefore give better values. We specially invite you to visit our various departments: "Ready to-Wear," including all kinds of party or reception frocks, Select Hats for any occasion' Separate skirt or pretty waist. Hosiery, Gloves, we receive by express nearly every day. Silk Underwear; we handle the high class "Keyser" and "Niagara Maid" Crepe De Chine Underwear, also the very dainty hand embroidered "Philipino" Nainsook Underwear. Phoenix Silk Hose. "Warner's Rust Proof Corsets." We carry a complete stock of "Queen Quality" Shoes, Slippers and Pumps. Special courtesies will be gladly extended Queens College girls and faculty.

We Have 28 Other Stores



**The
Merriest Place
In Town**

To the Ladies of Queens College....

Under the present management, the Piedmont Theatre is presenting the best of Musical Comedy offerings. In each instance the productions are clean and wholesome and strictly censored by the management.

An air of refinement and distinction now prevails at the Piedmont at all times and the theatre is being operated in a most pleasing manner.

EFIRD'S DEPARTMENT STORE



THE store noted for the magnitude of its assortment and extraordinary values extends thanks to Queens College girls for past patronage with a hearty future welcome from the store that sells it for less.

STORES AT

Charlotte, N. C.
 Concord, N. C.
 Gastonia, N. C.
 Winston-Salem, N. C.
 Rock Hill, S. C.
 Durham, N. C.
 Columbia, S. C.
 Rocky Mount, N. C.
 Salisbury, N. C.
 High Point, N. C.
 Anderson, S. C.

Raleigh, N. C.
 Greenville, S. C.
 Monroe, N. C.
 Greer, S. C.
 Spartanburg, S. C.
 Laurinburg, N. C.
 Lumberton, N. C.
 Greenwood, S. C.
 Burlington, N. C.

Lexington, N. C.
 Lincolnton, N. C.
 Cherryville, N. C.
 Lenoir, N. C.
 Forest City, N. C.
 Shelby, N. C.
 Wilson, N. C.
 Statesville, N. C.
 Danville, Va.
 Sumter, S. C.
 Wilmington, N. C.

THE IMPROVED VAPOR TREATMENT

for Spasmodic Croup, Influenza, and all Cold Troubles

THE new mode of treating Croup and Pneumonia by the application of Brame's Vapomentha Salve fills a long felt need in the treatment of infants, children and adults. When applied externally to the chest and throat it immediately commences to penetrate into the pores of the skin and at the same time produces a stimulating and antiseptic vapor which reaches the affected parts, breaking up the congestion and relieving the inflammation, in the meantime not interfering with the required supply of fresh air. We recommend that you test the superior penetrating qualities of Brame's Vapomentha Salve by rubbing a small quantity on a piece of white letter paper and see how quickly it will go through. It will penetrate into the body much quicker than it will through paper because it is assisted by the heat of the body.

Keep a bottle of Brame's Vapomentha Salve on hand always because in an emergency it may mean the saving of the life of your child or some other member of your family. Price, 30 cents, 60 cents and \$1.20 per jar, at all Drug and General Stores. If your dealer cannot supply you with this preparation, it will be sent to you postpaid upon receipt of price.

Manufactured by

BRAME DRUG COMPANY, Inc., North Wilkesboro, N. C.



The greatest stars in the world are shown here in their latest successes. The Imperial is the only moving picture theatre in Charlotte showing Paramount pictures, which means only the best.

The Coolest Spot in Charlotte in Summer
Always Clean, Comfortable

If You Attend the Imperial
Once, You Will
Be a Regular Patron

“The Velvet Kind”

CREAM OF ICE CREAMS

Sold by all leading ice cream dealers
of North Carolina

CHAPIN-SACKS CORPORATION

Charlotte, N. C. Salisbury, N. C. Wilson, N. C.



In Your Home

THERE is a perfection of action, a refinement of design and a warm beauty of tone that places the Knabe supreme among pianos ---that has made it the choice of discriminating musicians.

*The Ideal Piano for
Your Home*

Mignonette Grand, in Dull Mahogany

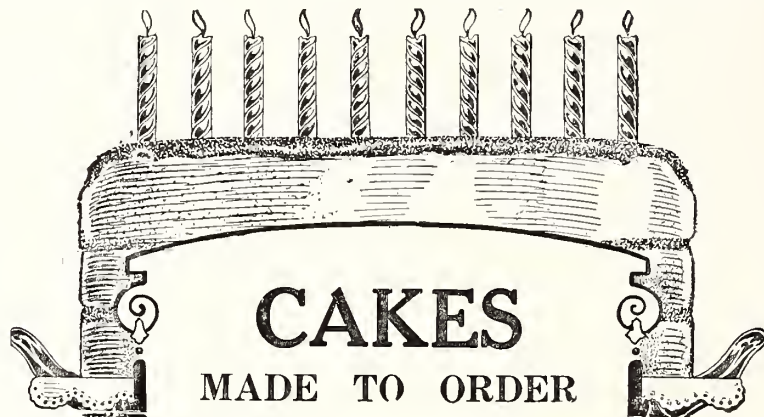
Catalog free on request

JOHN W. POST & CO.

"The House of Service"

209-211 W. Trade St.

Charlotte, N. C.



The unsurpassed deliciousness and elegant appearance of our specially made birthday and wedding cakes has won for us a large volume of business, of which we are very proud, for it is an evidence of public appreciation of the very highest quality.

Not How Cheap But How GOOD

**BARKER
BAKERY**

Three Doors from Kress

Charlotte, N. C.



MUSICAL INSTRUMENTS

For folks capable of making an intelligent choice

VICTOR RECORDS

J. B. IVEY & CO.

Banking for Women

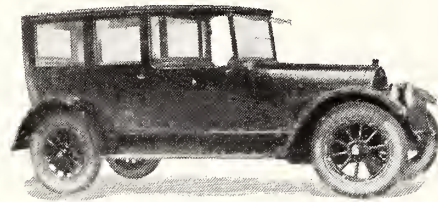
WE maintain a special department for the exclusive use of our women customers which furnishes every possible facility for the prompt and efficient transaction of banking in all its branches.

We cordially welcome household checking accounts, small as well as large, and on Savings deposits from \$1.00 upwards we pay 4% interest compounded QUARTERLY.

MAKE THIS BANK YOUR BANK

The Charlotte National Bank

Hello 1177 - - Taxi!



That's the call---when you want to get
there on time---in comfort and safety

Blake's Auto Service

The Myers Park Community Store Co.

James B. Vogler, Manager

.... Dealers in

Staple and Fancy Groceries

Cold Meats, Country Produce, Household
Necessities, Dairy Products, Ice Cream
and Confectioneries

Myers Park

North Carolina

Charlotte Transfer Company

BAGGAGE and FREIGHT
SERVICE

Office: Southern Depot
Phones 298-1919

JAKE MARTIN, Proprietor

Charlotte, N. C.

CRAVER'S Broadway Theatre



Exclusive Franchise Holders
First National Attractions
and Other Big Attractions

A Slogan at Queens: "Meet Me at the Broadway"

*Rose Garden
Tea Room*

211 N. Tryon Street

Have You Tried Our
Lunches?

We also have afternoon teas
and five course dinners

Entertain your friends
here

Phone 3579

The South's Superior Service

The
Ben-Vonde Co.

Cleaners and Dyers

18, 20, 22, 24, 26 W. 5th St.
Charlotte, N. C.

**CUSHMAN'S
STUDIO**

W. M. Morse, Proprietor

*Photographs of Quality
and Service Kodak Work*

3 W. Fifth St. Phone 2636

Charlotte, N. C.

**F. C. Abbott &
Company**



*Southern Mill Stocks
Bank Stocks
Bonds
Real Estate*



First Floor Trust Building
212 South Tryon Street
Charlotte, North Carolina

W. I. Van Ness &
Company



Picture Frames
Kodaks
Kodak Supplies
Art Novelties



23 North Tryon Street
Charlotte North Carolina



Brown's

The Sensible Place to Eat

Open All Night

17 South Tryon Street
Charlotte, N. C.

Sheppard Drug
Company

Prescriptions
Drugs
Toilet Articles



The Exclusive Ladies' Store



7 W. Trade St.
Charlotte North Carolina

Sehorn & Hipp

Successors to Hutchison, Sehorn & Hipp

Chandler, Chevrolet and
Cleveland Automobiles
Trucks, Tractors
Agricultural Implements
Buggies, Wagons
Rubber Tires
Harness, Bicycles, Etc.

"Everything for the Farm"

Phones 4050 and 4051
211-213 N. College St.

The Three Best Candies

Whitman's Sampler

\$1.50 a pound

New Orleans Stuffed Fruits

\$2.00 a pound

Jacksonville Log Cabin Roll

\$1.50 a pound

If you don't know them you
should. Always fresh

Always on Ice

at

Jno. S. Blake Drug
Company

On the Square Phones 41, 300

Raleigh Cafe

J. T. MATTHEWS, Proprietor

.....
Noted for
Quick Service

.....
Best food at most reasonable
prices

Phone 3486

.....
Try Us

This is not a business ad.
---only an expression of
gratitude to the young
ladies of Queens
College



Zindel's
Hygienic Bakery

506, 508, 510 S. Tryon St.

J. W. Zindel, Proprietor

Gilmer-Moore Company

Exclusive Boot Shop

FINE SHOES
EVENING SLIPPERS
TRUNKS AND BAGS



16 South Tryon Street
Charlotte, North Carolina

THIES-SMITH REALTY CO.

Real Estate
Rents Insurance

Builders of
Characteristic Homes

O. J. Thies, Pres. F. B. Smith, Treas.

Charlotte, N. C.

Sarratt Grocery Store

When looking for the
best in

Fancy and Staple
Groceries

Sarratt's is the place

North Tryon St.

Shu-Fixery

Charlotte's Leading Shoe
Repair Shop

313 West Trade St.

When in a hurry wear
those shoes to our repair
shop and see how quick
we can fix them while
you wait. ∴ ∴ ∴

Shoes called for and de-
livered when promised

Phone 2622

The Commercial National Bank

of Charlotte, N. C.

Solicits your business and
promises every accommoda-
tion and courtesy consistent
with sound banking

Capital and Surplus Over
A Million Dollars

OFFICERS

R. A. Dunn	President
D. H. Anderson	V.-President
C. W. Johnston	V.-President
A. T. Summey	Cashier
I. W. Stewart	Ass't Cashier
T. S. McPheeters	Ass't Cashier

Visit Our Fountain

All the latest drinks
served by expert dis-
pensers

Agents

Nunnally, Hollings-
worth and Mary Gar-
den Candies.

Tryon Drug Co.

Phones 21 and 22

Mutual Building & Loan Association

Education is not complete
without some lessons in
Thrift and Savings

This is the place for such
instruction and experience

E. L. KEESLER
Sec. & Treas.

Arcade Pharmacy Inc.

L A T T A A R C A D E

"Something different in
Soda Service. Give us
a trial"

Norris Block's
Candies

Smith-Wadsworth Hardware Co.

29 East Trade Street

Hardware and
Sporting Goods

Wholesale and Retail

"Our Service MUST Satisfy"

EXCELSIOR Shoe Repairing

W. E. Overstreet, Prop.

There is such a thing as
Exquisite Shoe Repairing
and we do that kind
Please try us, girls

16 1-2 South Tryon Street

DeLane Shoe Company

Women's Fine Shoes
Evening Slippers
and Hosiery

36 East Trade St.

Charlotte North Carolina

THE WORLD FAMOUS CHICKERING PIANO

"OLDEST IN AMERICA
BEST IN THE WORLD"

VICTROLAS and
RECORDS

SHEET MUSIC and
BOOKS

GUITARS, VIOLINS and
UKULELES, Etc.

Andrews Music Store
Inc.
Charlotte, N. C.



Her Musical Education

Will be materially aided if she has for
practice use

A STIEFF

Its pure, sweet, lasting tone is considered
indispensable by many teachers
of Pianoforte

CHAS. M. STIEFF, Inc.

J. O. Smith, Mgr.

Charlotte's Musical Headquarters
Charlotte, N. C. 215 S. Tryon

DR. E. D. PUETT

Optometrist



I make a specialty in
the examination of
EYES and fitting of
glasses.



Office Hours

9 to 1 A. M. 2:30 to 5 P. M.

Service Store Phone 185

Our Delivery Service is at
Your Service. Use It

Ask Your Doctor

Walker's
Drug Store

Cor. 7th and Tryon Sts.
Automobile Delivery

Norris Candy Parker Pens
Agents for Klim

Blanton-Sparrow
Company

Wholesale
Grocers

Phone 3854

35 South College St.

BILL OF FARE

Queen Ginger Ale, pts. and half pts.
Catawba Grape Cal-Ora
Cheerwine Mint Cola Root Beer
Lemon Lemon Sour
Strawberry Peach
Carbonated water in siphons
Apple Vinegar and
Malt Vinegar in bottles and barrels
Liquid Carbonic Gas
Lily Drinking Cups
Pure Drinking Water
Distilled Tripure Water
Ozonated Water
(Purified by electricity)
Sold in five gallon demijohns and
gallons and half gallon bottles

All our drinks are made from Ozonated water

**C. VALAER BOTTLING
WORKS**

317 South College Street
Phone No. 5 Charlotte, N. C.

The
Charlotte Laundry

OLDEST
LARGEST
BEST

Faultless Dry Cleaning
Dyeing

444 Phones 445

If it's *Quality* you want

ASK FOR



FRESH AT YOUR GROCER'S
EVERY DAY

Carolina Baking Company

S. & W.
CAFETERIA

20 W. Trade St.



Breakfast 7 to 9
Dinner 11 to 2:30
Supper 5 to 8



"The Argument is the Food"

FELIX HAYMAN

Market of *Quality*

SPECIALTIES:

Calf Sweetbreads, Brains and
Liver, Ox Tongue, Tripe,
Pickled Pig Feet, Game in
season, Choice Western
Meats. Fish and Oysters,
Dressed Poultry, All Kinds
of Sausage

Full Line of Delicatessen

Phones 151-152
33-35 N. TRYON STREET

*Caters Especially to Commercial
Travelers*

The Selwyn

EUROPEAN PLAN

A. D. Brabble, Manager

Modern and Luxurious

150 Rooms---75 with bath
Fire Proof

Charlotte, N. C.

Dodge Brothers Motor Cars

Parts - - Sales
Service

Charlotte, N. C.
8 West First St.

Caldwell, Tredenick
& Lambeth, Inc.

Sanders-Orr Co.

C
O
T
T
O
N

Of Course You Want Good Bread



Fasnacht

has been in business in Charlotte
since 1881. The desire of this
bakery is to give good service
and good bread.

Phone 328

L. S. SLOOP &
COMPANY

Wholesale

GROCERIES, FRUITS
and PRODUCE

CIGARS, CIGARETTES
and TOBACCO

FEED OF ALL KINDS

PHONES 192-193

43-45 SOUTH COLLEGE STREET
CHARLOTTE, N. C.

Charlotte Drug Co.

200 East Trade St.

Drugs and
Garden
Seed



T. N. Edwards, Proprietor
Phone 2663

TRANQUIL PARK SANITARIUM, situated three miles from the City of Charlotte, N. C., on an Asphalt Boulevard passing through Beautiful Myers Park, is a step towards more modern methods of treating sickness, where Nature has an opportunity to assist the Physician and medicines used.

Beautiful scenery, luxurious apartments, modern equipment and the beautiful environs, combined with medical skill, and the restful atmosphere of a natural Park, where there are many forms of recreation, is a step from the HOSPITAL and is the result of deep study of the question of HOW TO ASSIST NATURE in restoring health. Tranquil Park has solved this deep question.

IT HAS FOR ITS SPECIAL OBJECT THE TREATMENT OF ALL CASES WHERE REST AND RECREATION ARE ESSENTIAL FACTORS.

Special facilities are provided for the treatment of Diseases of Digestion, Nervous Affections, Neurasthenia, Exhaustion Psychoses, Simple States of Depression due to business or other stress, and all forms of Chronic Invalidism. A HOME FOR THE AGED AND INFIRM. A GOOD PLACE TO REST AND BUILD UP ENERGY. NO INSANE PERSON TAKEN FOR TREATMENT.

Tranquil Park is in its infancy; in the near future there will be cottages, walks and many other features that for the convalescent will be ideal.

A training school for nurses is conducted. Any girl between the ages of 18 and 30, who has a high school education, or its equivalent, may enter any time upon application.

DR. JOHN Q. MYERS,

DR. JOHN P. MUNROE,
Medical Directors

DR. ALONZO MYERS, Orthopedics

DR. M. L. TOWNSEND, Resident Physician

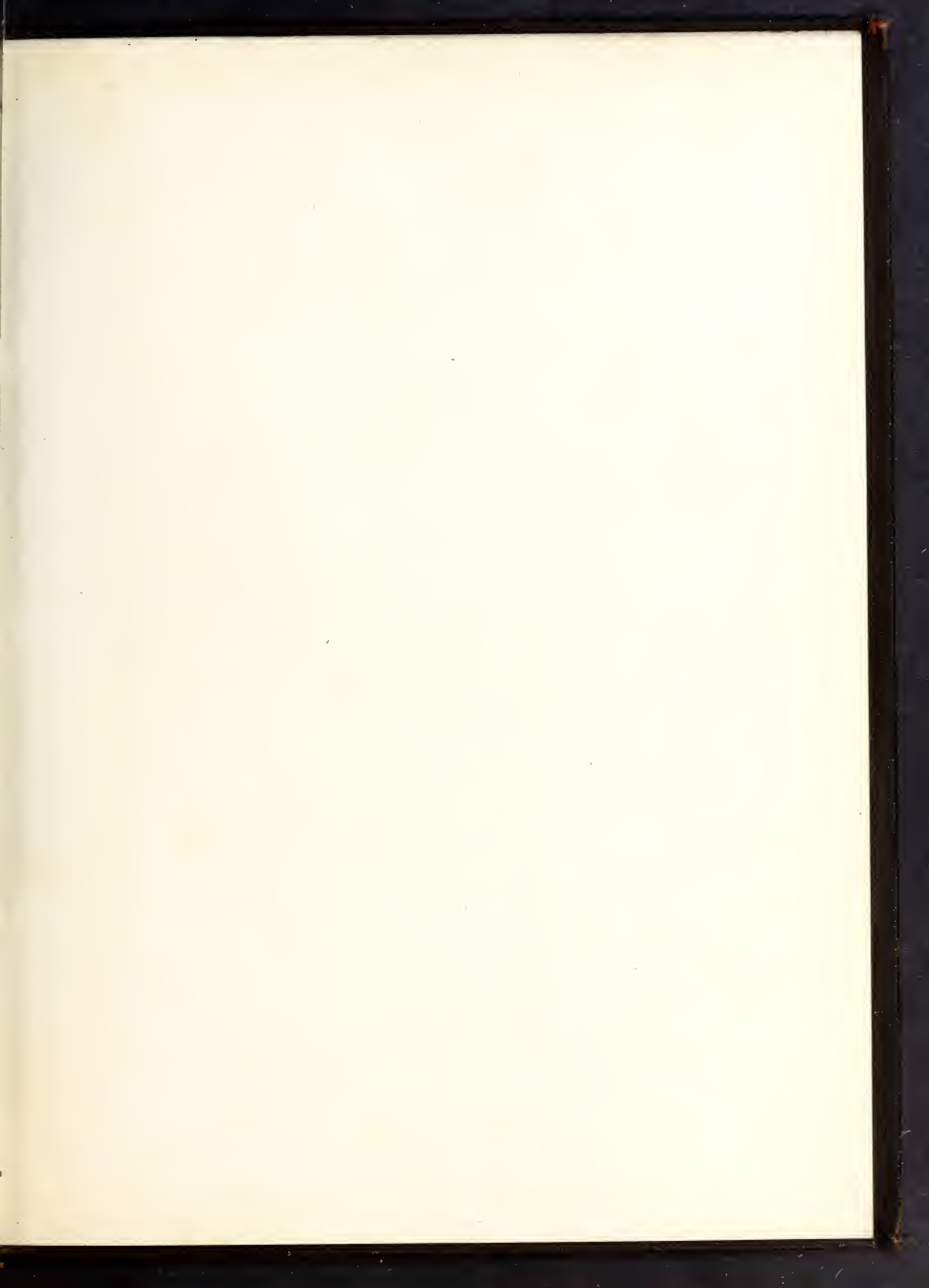
MISS JENNIE PAGE CLARK, Physical Directress

The engravings used in this
annual were furnished by

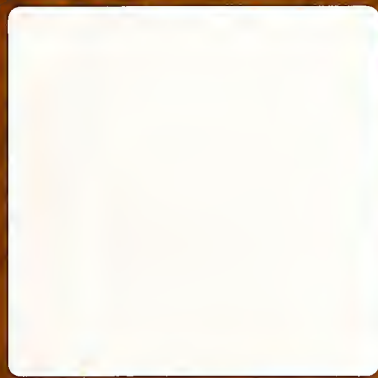
THE
BALTIMORE
MARYLAND
ENGRAVING
CO.

28 S. CHARLES ST. BALTIMORE, MD.

We make a specialty of college
annual engravings







CHARLOTTE MECKLENBURG PUBLIC LIBRARY



3 3114 03945 1034