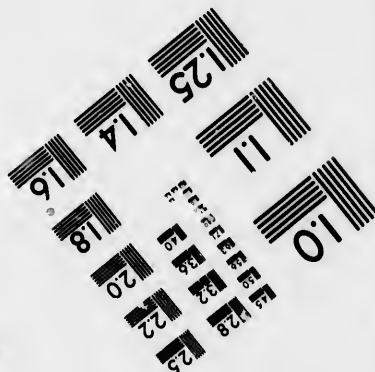
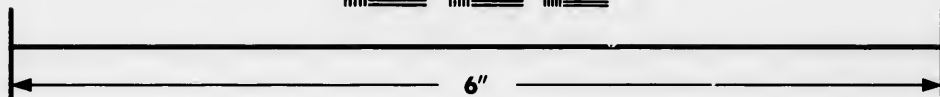
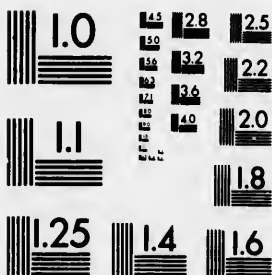


**IMAGE EVALUATION
TEST TARGET (MT-3)**



**Photographic
Sciences
Corporation**

23 WEST MAIN STREET
WEBSTER, N.Y. 14580
(716) 872-4503

Can

**CIHM/ICMH
Microfiche
Series.**

**CIHM/ICMH
Collection de
microfiches.**



Canadian Institute for Historical Microreproductions / Institut canadien de microreproductions historiques

© 1982

Technical and Bibliographic Notes/Notes techniques at bibliographiques

The Institute has attempted to obtain the best original copy available for filming. Features of this copy which may be bibliographically unique, which may alter any of the images in the reproduction, or which may significantly change the usual method of filming, are checked below.

L'Institut a microfilmé le meilleur exemplaire qu'il lui a été possible de se procurer. Les détails de cet exemplaire qui sont peut-être uniques du point de vue bibliographique, qui peuvent modifier une image reproduite, ou qui peuvent exiger une modification dans la méthode normale de filmage sont indiqués ci-dessous.

- Coloured covers/
Couverture de couleur
- Covers damaged/
Couverture endommagée
- Covers restored and/or laminated/
Couverture restaurée et/ou pelliculée
- Cover title missing/
Le titre de couverture manque
- Coloured maps/
Cartes géographiques en couleur
- Coloured ink (i.e. other than blue or black)/
Encre de couleur (i.e. autre que bleue ou noire)
- Coloured plates and/or illustrations/
Planches et/ou illustrations en couleur
- Bound with other material/
Relié avec d'autres documents
- Tight binding may cause shadows or distortion along interior margin/
La reliure serrée peut causer de l'ombre ou de la distortion le long de la marge intérieure
- Blank leaves added during restoration may appear within the text. Whenever possible, these have been omitted from filming/
Il se peut que certaines pages blanches ajoutées lors d'une restauration apparaissent dans le texte, mais, lorsque cela était possible, ces pages n'ont pas été filmées.
- Additional comments:/
Commentaires supplémentaires:

- Coloured pages/
Pages de couleur
- Pages damaged/
Pages endommagées
- Pages restored and/or laminated/
Pages restaurées et/ou pelliculées
- Pages discoloured, stained or foxed/
Pages décolorées, tachetées ou piquées
- Pages detached/
Pages détachées
- Showthrough/
Transparence
- Quality of print varies/
Qualité inégale de l'impression
- Includes supplementary material/
Comprend du matériel supplémentaire
- Only edition available/
Seule édition disponible
- Pages wholly or partially obscured by errata slips, tissues, etc., have been refilmed to ensure the best possible image/
Les pages totalement ou partiellement obscurcies par un feuillet d'errata, une pelure, etc., ont été filmées à nouveau de façon à obtenir la meilleure image possible.

This item is filmed at the reduction ratio checked below/
Ce document est filmé au taux de réduction indiqué ci-dessous.

10X	14X	18X	22X	26X	30X
<input type="checkbox"/>	<input type="checkbox"/>	<input checked="" type="checkbox"/>	<input type="checkbox"/>	<input type="checkbox"/>	<input type="checkbox"/>
12X	16X	20X	24X	28X	32X

The co
to the p

The im
possibl
of the
filming

Original
beginni
the last
sion, or
other o
first pa
sion, an
or illustr

The las
shall co
TINUED
whiche

Maps, p
differen
entirely
beginni
right an
require
method

The copy filmed here has been reproduced thanks to the generosity of:

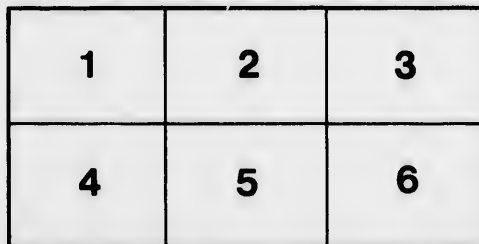
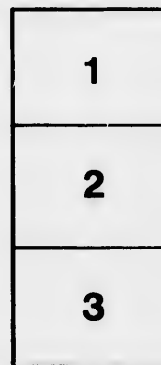
Library of the Public
Archives of Canada

The images appearing here are the best quality possible considering the condition and legibility of the original copy and in keeping with the filming contract specifications.

Original copies in printed paper covers are filmed beginning with the front cover and ending on the last page with a printed or illustrated impression, or the back cover when appropriate. All other original copies are filmed beginning on the first page with a printed or illustrated impression, and ending on the last page with a printed or illustrated impression.

The last recorded frame on each microfiche shall contain the symbol \rightarrow (meaning "CONTINUED"), or the symbol ∇ (meaning "END"), whichever applies.

Maps, plates, charts, etc., may be filmed at different reduction ratios. Those too large to be entirely included in one exposure are filmed beginning in the upper left hand corner, left to right and top to bottom, as many frames as required. The following diagrams illustrate the method:



L'exemplaire filmé fut reproduit grâce à la générosité de:

La bibliothèque des Archives
publiques du Canada

Les images suivantes ont été reproduites avec le plus grand soin, compte tenu de la condition et de la netteté de l'exemplaire filmé, et en conformité avec les conditions du contrat de filmage.

Les exemplaires originaux dont la couverture en papier est imprimée sont filmés en commençant par le premier plat et en terminant soit par la dernière page qui comporte une empreinte d'impression ou d'illustration, soit par le second plat, selon le cas. Tous les autres exemplaires originaux sont filmés en commençant par la première page qui comporte une empreinte d'impression ou d'illustration et en terminant par la dernière page qui comporte une telle empreinte.

Un des symboles suivants apparaîtra sur la dernière image de chaque microfiche, selon le cas: le symbole \rightarrow signifie "A SUIVRE", le symbole ∇ signifie "FIN".

Les cartes, planches, tableaux, etc., peuvent être filmés à des taux de réduction différents. Lorsque le document est trop grand pour être reproduit en un seul cliché, il est filmé à partir de l'angle supérieur gauche, de gauche à droite, et de haut en bas, en prenant le nombre d'images nécessaire. Les diagrammes suivants illustrent la méthode.

laire
s détails
ques du
t modifier
iger une
e filmage

1/
uées

aire

by errata
ned to

ent
une pelure,
façon à



32X

THE

Lucas Miller

FARMER'S ALMANACK, RARE

FOR THE YEAR OF OUR LORD

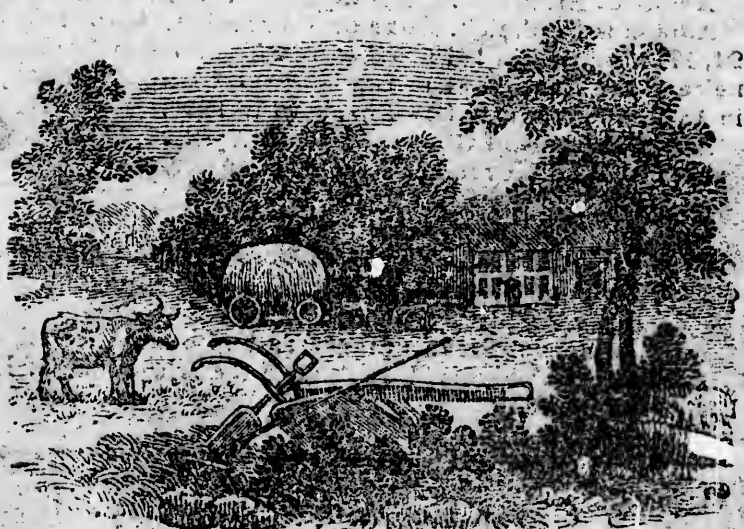
1833.

CALCULATED FOR THE MERIDIAN OF

HALIFAX, NOVA SCOTIA.

BUT WILL SERVE FOR ANY PART OF THE PROVINCE

AY
420
NLF3
1833



CONTAINING,

Calculations of the weather, Tides, Directions for entering
• Halifax and other principal Harbours, and a variety
of Astronomical, Nautical, Agricultural and

• OTHER USEFUL AND NECESSARY INFORMATION.

HALIFAX.

Printed and Published by EDMUND WARD, and for sale

At The Free Press Printing Office,

And at the Bookstore of A. & W. MACKINLAY.

THE ROYAL FAMILY.

His Majesty WILLIAM IV. born August 21, 1764, succeeded his brother George IV. June 26, 1830 ;—married in 1818 to the sister of the Duke of Saxe Weiningen.

Her Majesty, Queen Adelaide, born 16th August, 1792.

Princess Augusta Sophia, born November 8, 1768.

Earnest Augustus Duke of Cumberland, born June 5 1771, married in 1815, the daughter of the Duke of Mecklenburgh Strelitz, then widow—issue George Frederic, born 1819.

Augustus Frederick, Duke of Sussex, born Jan. 27, 1778.

Adolphus Frederick, Duke of Cambridge, born February 24, 1774, married in 1818 to Augusta Wilhelmina Louisa, the niece of the Landgrave of Hesse—issue George William, brn in 1819, and Augusta Caroline, born in 1822.

Mary, Duchess of Gloucester, born April 25, 1779.

Sophia, born November 3, 1779.

COUSINS TO HIS MAJESTY.

Sophia Matilda, Duchess of Gloucester, and William Frederick, Duke of Gloucester.

PRESUMPTIVE HEIRESS TO THE CROWN.

Alexandrina Victoria, Daughter of the late Duke of Kent, born May 24, 1819.

Cheap Books and Stationary.

A. & W. MACKINLAY,

Wholesale and Retail Booksellers and Stationers, Cochran's Buildings near the Exchange,

An extensive Supply of BOOKS and STATIONARY.

OF EVERY DESCRIPTION.

Received from London, Liverpool and Glasgow: all of which will be sold on very low terms,—viz. Writing Paper of every kind, Day Books, Journals and Ledgers, with Blank Books of every description; Drawing Materials, Bibles, Testaments, Psalm Books, and School Books of all kinds, &c. &c. &c.

AN INDEX,

Of the principal matters contained in this Almanack, will be found on the last page.

Shew
No
on
M
oth
as
F
Nov
Halif
Mang
Samb
Shut-
Jedon
Tang
Oeter
Green
Berry
Whit
Canso
Eddy
Cape
Pictor
Pictor
Pictor
Cape
Point
Cape
Lehav
Indian
Metw
Liverp
West
Little
Easte
Long
Isle
Shelb
Sandy
Cape
South
Ditto
Sable
Ditto
Jusq-
Port I
Ship I
Cape
the
Green
Cape
Louis
Cape
Scatte

A TABLE,

Shewing the Latitudes and Longitudes of Headlands, &c. on the Coasts of North America, Newfoundland and Bermuda, from a series of observations made on the spot, in the years 1828, '29 and '30, by Mr. John Jones, Master; and Mr. Horatio Jamney, Mate, of H. M. Ship Hussar, and other Officers of the North American Squadron:—Halifax being considered as the Meridian.

PLACE OF OBSERVATION.	Latitude. North.	Longitude West of Greenwich	Variation westerly
NOVA-SCOTIA GULF ST. LAWRENCE			
Halifax, N. Yard, (meridian)	44 29 26 2	63 37 48	17 19 30
Maugher's Beach, (Light House)	44 36 2		
Sambro Light House	44 26 17	63 35 16 2	16 45
Shut-in-Island, S. W. end	44 36 25	63 17 48	
Jedore Head,	44 40 5	63 5 10 5	
Tangier Island, off (Tangier Harbour)	44 44 28	62 41 7 5	
Outer Beaver Island.—S. E. Point	44 48 24	62 21 43	
Green Island, (Country Harbr. S. Pat.	45 4 55	61 34 49 5	
Berry Head, near Torbay	45 10 44 3	61 21 9	
White Head, off Whitehaven	45 10 17	61 9 42 5	
Canso Light House	45 19 33	60 58 30	
Eddy Point (Gut of Canso)	45 30 25	61 16 54	
Cape St. George, ditto	45 51 22	61 55 12	
Pictou Island, South side	45 47 52	62 37 33	19 35
Pictou Harbour	45 41 56 7	62 42 0	19 0
Pictou Academy	45 40 20	62 44 28	19 0
Capo Prospect, extreme point	44 26 38	63 46 39	16 10
Point Rose, Malaguash Bay	44 18 7	64 15 33	16 15 W
Cape Lehave, South point	44 11 8	64 23 43 8	15 9
Lehave Rock	44 10 50	64 22 24 8	
Indian Island, South point	44 9 40	64 26 51	15 15
Metway Head, Metway Harbour	44 6 24	64 35 9	14 59
Liverpool, Light House,	44 1 52	64 40 49 8	14 43
Western Head, Liverpool Bay	43 59 13	64 42 34 8	14 43
Little Hope Island	43 48 34	64 49 48	14 1
Easternmost Rugged Island, S. E. Point	43 41 14	65 3 43 6	
Long projecting point between Rugged Island Harbour and Green Harbour	43 39 40	65 11 28 6	13 41
Shelburne Light House	43 37 31	65 18 40 5	
Sandy point, Shelburne Harbour	43 41 57	65 22 11	12 58
Cape Sable, South Point	43 23 57	65 38 3	12 24
South Sea Island, South point	43 23 51	65 59 42	14 0
Ditto North Point	43 26 22	66 1 38	14 0
Sable Island, East end	43 59 15 7	59 48 17	
Ditto West end,	43 56 20	60 13 34	
Jusq-aux Corp Island, S. point	45 58 10	61 37 51	20 40
Port Hood, Cape Linzee	45 59 31	61 36 15	21 14
Ship Harbour, Gut of Canso	45 36 25	61 21 43	19 16
Cape Minchenbroke, a small Island off the Cape	45 34 29	60 42 36	20 11
Green Island, off Isle Madame	45 27 47	60 57 48	18 30
Cape Portland	45 47 57	60 7 26	
Louisburg, ruins of the old Light	45 53 31 5	59 59 48	
Cape Breton, extreme point	55 56 26	59 59 15	
Scattery Island, East point	46 1 19	59 43 29	

ceeded
1818

1792.

5 1771,
burgh
9.
, 1778.
February
isa, the
am, brn

m Fre-

f Kent,

chran's

CARY.

which
every
books of
ments,
c.

will be

Cape Granby extreme point	46	9	13	59	53	0	22	27
Cape North, N. E. point, Breton Island	47	2	13	60	26	53	23	30
Bona Venture Island, N. W. point	48	29	30	61	13	37	3	
Douglas Town, south end of the Beach	48	46	33	64	25	18	20	40
Cape Gaspe south east point	48	45	14	61	13	38	21	33
Cape Tormentine, N. E. point	46	7	38	63	51	41	7	
Point Escuminac, N. E. point	47	5	1	61	53	30	3	
Point Miscou, N. E. point	48	1	27	61	35	49	5	
Cape Traverso	46	13	37	63	42	47		
Prince Edward Island, W. point	46	37	48	61	21	21	8	
Ditto, east point	46	27	36	62	0	8	21	0
Ditto, Cape North, N. E. point	47	4	20	61	4	15	6	
Ditto, Cape Bear	46	0	2	62	29	57		
Paspébiac, S. point of Beach	48	0	54	65	18	16	7	9 40
Anticosti, west point	49	52	29	61	36	51	9	22 55
Ditto, north point	49	57	33	61	15	1	4	
Ditto, east point	49	8	30	61	41	56	9	24 38
Mingan Harbour	50	17	35	64	5	32	7	
Ditto, Island, east side	50	13	7	61	12	11		
Cape Rosier	48	50	41	61	15	21		
Point Des Monts, Light House	49	19	32	67	21	49	5	
Ditto, extreme point	49	18	33	67	26	19	5	
Magdalen Island, N. E. point	17	37	37	61	26	51		
Brion's Island, N. E. point	17	48	8					
Entry Island, W. S. W. point	17	16	7	61	47	26	22	25
Bird Island, northernmost	17	50	28	61	12	53		
City of Quebec				71	16	25	5	12 54
St. Paul's Island	47	12	38	60	11	21	23	45

BAY OF FUNDY.

St. John, N. B.	45	15	0	66	6	19		
Patridge Island Light House	45	13	36					
Beaver Harbour, S. W. point of entrance	15	3	12	63	47	28		
Navy Island, south east point	15	2	21	67	5	47		
Bliss Island, south west pt. Etang harbr.	15	0	15	66	51	27		
Head Harbour, Light House Campo Bello	44	56	50	66	56	58		
Grand Manan, north point	44	46	49	66	49	7		
Ditto, swallow tail point	44	44	51	66	47	21		
Ditto, White Head Island	44	36	59	66	45	4		
Brier's Island, Light House	44	13	51	66	26	54		
Digby Light House	44	40	25	65	50	15		

NEWFOUNDLAND.

St. John's Fort Townshend	7	33	33	8	52	45	10	7
Maple Broyle, south point	7	2	19	8	52	55	33	
Cape Race	6	0	27	53	8	6		
Virgin-Rocks	16	26	15	3	50	56	35	
Trespassy, Point Powles	6	43	11	8	53	27	0	
Placentia, Point Verde	7	13	51	1	54	6	16	7
Blue Beach Point, Cape Chapeau Rouge								
south 22, east 1 1-4 miles	6	54	16		55	28	40	7
Cape Raye, extreme point	7	36	40		59	21	0	
Port aux Basque, Road Island.	7	31	11		59	10	39	21 9

BERMUDA.

St. Catharine's Point	32	23	43	61	41	25	8	
Dock Yard	32	19	1	61	54	18		
Wreck Hill,	32	16	1	61	57	21		
Cibb's Hill, Flag Staff	32	14	18	31	55	2		
North Rock	32	29	36	31	50	18		

Signals

One Ball
ged vess
One ball
Two do
Two do se
A pendant
do.
A do. unde

[The abo
ording to
dition of a
be seen, wh
lours will be

An Union
Do. with
Do. with
Do. with
A red flag
A blue pen
A red do.
A white d
A blue and
A white a
A blue flag
A red, whi
A red flag,
An Union
detained or p
A white fla
A ball at
should immedi

Made on the
which Vesse
A red flag fr
A red and w
A red penda
A white & r
A blue flag,
A blue pend

Signals made at Fort George when Vessels are coming up the Harbour.

One Ball close for a square rigged vessel.	A do over a do. half hoisted for 7 do.
One ball half hoisted for 2 do.	A do under 2 do close for 8 do.
Two do close for 3 do.	A do between 2 do separated for 9 do.
Two do separated for 4 do.	A flag of any colour for 10 or more do.
A pendant of any colour for 5 do.	
A do. under a Ball for 6 do.	

[The above are hoisted at the east or west yard arm, according to the quarter the vessel first appears in, with the addition of a ball at the centre of the yard, until the vessel can be seen, when one or more of the following descriptive colours will be hoisted at the mast head.]

- An Union for a flag ship, with or without a squadron.
- Do. with a red pendant over it, for a two decker.
- Do. with a blue pendant over it for a frigate.
- Do. with a white pendant over it, for a small armed vessel.
- A red flag pierced with white for a packet.
- A blue pendant for a merchant ship.
- A red do. for a merchant brig.
- A white do for a topsail schooner or sloop.
- A blue and white flag horizontally divided, neutral fleet.
- A white and blue pendant, neutral man of war.
- A blue flag, neutral merchant ship.
- A red, white and blue flag, an enemy's fleet.
- A red flag, an enemy's merchantman.
- An Union Jack over neutral or enemy's signals, vessel is detained or prize.
- A white flag over any signal, vessel bears a flag of truce.
- A ball at the mast head, vessel is on shore in distress—should immediate aid be necessary, guns are to be fired.

EXPLANATION OF SIGNALS.

- Made on the Ensign Staff at Fort George, to denote the port which Vessels entering the Harbour have arrived from.
- A red flag from Great Britain.
- A red and white do the Mediterranean.
- A red pendant, the Continent of Europe.
- A white & red pendant, Madeira, Canary or Western Isles.
- A blue flag, West Indies.
- A blue pendant, Bermudas, Bahamas, or Turk's Island.

- A blue and white flag, United States.
 A white flag, Newfoundland.
 A red and white flag horizontally divided, Quebec or Gulf of St. Lawrence.
 A blue and white flag horizontally divided, New Brunswick or Bay of Fundy.
 A white and blue pendant, vessel has an English Mail on board.
 A white pendant, coasts of Nova Scotia and Cape Breton.

Repeat from Outposts at Fort George.

- For a square rigged vessel—Two balls of one size.
 A Ship—A large ball at the end of the yard, with a small ball in the centre.
 A Sloop or Schooner—A lozenge in the centre close up.
 Two or more Schooners—A lozenge half hoisted.

Merchant's Private Signals—Port of Halifax.

- BLUE, &c.—J. H. Tidmarsh, a blue flag.
 Joseph Allison & Co. a blue burgee.
 A. Belcher & Co. a blue flag crossed white.
 James Forman, junr do crossed white diagonally.
 S. Cunard & Co. do centre a white star.
 Wm. Pryor & Co. a blue and white flag, blue uppermost.
 L'Epousie & Hall, blue and yellow chequered flag.
 M. Richardson, a blue and red flag, blue next the mast.
 Wm. Story, a blue flag, centre a white square.
 John Clark, do. crossed white diagonally.
 George P. Lawson, a blue and white quartered flag.
 G. & A. Mitchell, a blue and white burgee, blue uppermost.
 Conrad West, a blue burgee, centre a white star.
 M. B. Almon, blue and red flag, crossed white.
 J. G. Ritchie, blue and white flag, striped horizontally.
 W. B. Hamilton, blue, white and blue flag, horizontally.
 Dubord, blue, white and red flag, blue next the mast.

- RED, &c.—D. & E. Starr, a red flag.
 J. & M. Tobin, a red flag, crossed white.
 Creighton & Grassie, do. crossed white diagonally.
 Jas. Leishman, red burgee, with a white cross.
 E. Collins & Co. red and yellow flag, sriped horizontally.
 Deblois & Mitchell, do. centre a white square,
 Frasers & Co. red and white, white next the mast,
 John Brown a red Burgee, centre letter B.
 Boggs & Hartshorne, a red and white chequered flag.
 C. & W. Roche, a red flag, centre a white diamond,

Thos. Tobin, red and white triangular flag,
 Thos. Laidlaw, a red, white and red flag, red uppermost.
 Hamilton & Co. blue, white and blue, do blue uppermost.
 James Oswald, blue, white and red flag, blue uppermost.
 Fiddes & Robinson, red and white flag, red uppermost.
 R. Noble, red flag, letter N in the centre.
 B. Zwicker, red flag, with letter Z in the centre.

WHITE, &c.—J. & T. Williamson, a white flag.
 W. J. Starr, do centre a blue star.
 Fairbanks & M'Nab, do crossed blue.
 Halifax Packet Company, a white, blue, white and red burgee, white next the mast.
 Wm. & Rt. Lawson, blue & white triangular flag,
 Francis Stevens, blue, white & blue, blue next the mast.
 Wm. Strachan, white, red and white do. white next the mast.
 Reynolds & Co. a white burgee, crossed red.
 Fiddes & Robertson, white and red flag, red uppermost.
 J. & H. Grant, a white flag, centre G. S.
 William Stairs, a white flag pierced blue.
 John A. Barry, a white flag crossed red.
 T. M. Morris, white flag with blue border, centre a blue Ball.
 E. Pryor & Co. white, red and white flag, horizontal.

YELLOW, &c.—Temple & Lewis Piers, a yellow flag, centre a blue ball.

The foregoing Signals are worn at the main. Upon a Vessel arriving in sight from the Light House so wearing a signal, a similar one is hoisted on the Telegraph Staff, or at the yard arms of the Signal Staff at Fort George, with a pendant under it, descriptive of the class of vessels to which she belongs.

PILOTAGE.

TABLE of Rates of Pilotage of Vessels into and out of, the Harbour of Halifax, established by "An Act to regulate the Pilotage of Vessels at the Port of Halifax"—9th Geo. Chap. IV. 7.

On Vessels of 200 Tons and under.....	£2	0	0
Do. 200 Tons to 300	2	10	0
Do. 300 Tons and upwards	3	0	0
His Majesty's Ships under 4th Rates	2	0	0
Do. 4th, 5th, and 6th Rates	2	10	0
Ships of the Line	3	0	0

On Vessels entering the Port, if boarded to the Northward of Herring Cove and Thrum Cap Island, one fourth less than the above rates,

ROADS.

To the Principal Towns in the Province, with the Names of Inkeepers and distances, and the Roads to St. John and Fredericton, N. B.

<i>Halifax to Digby</i>	Read's Digby	9	Whitter's } Truro
Donaldson's } 5	Everet's Wey- }	13	Blanchards } (64) 7
Birchrove hotel }	mouth road }	6	Gourley's Onslow 5
Rockingham,	1 Cosman's wey- }	6	Yewill's Lower } 14
Fultz's 5 1-2	mouth church }	4	Village }
Hamilton's 1-2	Journie's Sissiboo,	4	Clark's, foot of }
Hiltz's 9	Cosman's, Clare	4	Cob mountains }
Fitzmaurice's 1 1-2	Terrian's Monta-	15	Purdy's, top of do 6
Pence's 3 1-2	gan cove	15	Hewson's, Riv- }
McLellan's 4	Corking's Bear }	14	er Philip }
Trefry's Newport	River }	10	Stewart's }
Road (35)	5 Parry's Yarmouth	8	Bent's, Amherst, 10
Wallace's 1	Lakes	8	Fort Cumberland 7
Northrup's 4	Smith's—Richan's	---	---
Mrs. Wilcox, Wind-	Yarmouth church 5	131	---
sor, (47)	5 Blanvelts, Tuskett 10	---	---
Songster's Falmouth	Nickerson's, a }	8	<i>Halifax to Shelburne</i>
Bridge 4	public river }	8	<i>via Lunenburg and</i>
Smith's 1	Spinney's a pub-	5	<i>Liverpool,</i>
Northrup's 5	lic Bay	5	Johnson's Ham-
Martin's 4	Larkin's Pubnico 10	12 1-2	mond's plains 12 1-2
Graham's } Hor-	Kendrick's Bar-	13	Phillipps' Ingra-
Fowler's } ton,	ington	13	ham River 13
Watt's } Kent-	Powell's, riv. Clyde 5	7	Herbert's Cove 7
Hotel } ville 72	Hargraves, Shel-	12	Lovett's Chester 12
Sharp's 7	borne	16	Go'd river 6
Crane's 8	---	---	Blackhouses 4
Harris's 1	---	162	Martin's river 3
Gibbon's 12	<i>Halifax to Cumber-</i>	---	Ernst's musha- }
Leonard's 10	<i>land.</i>	---	mush river }
Bridgetown 5	Fultz's 11 1-2	---	Mrs. Zwicker's }
Annapolis town 15	Fletcher's 6	---	Mahone Bay }
Ditmars 8	Shultz's 5	---	Heckman's Lunen-
Winchester's }	Hall's 3	---	burg (70 1-2) 6
Bear River }	Keys' 6	---	To the ferry at La-
Digby, Ruggles 7	McKeen's 3 1-2	---	have river 7
---	Corbett's } Gay's	---	across the ferry 3-4
149	Miller's } river	---	Mrs. Manning's }
<i>Annapolis to Shel-</i>	Pollock's 9	---	Petite Riviere }
<i>burne.</i>	Polly's 3	---	Teals, Broad Cove 4
Clement's Church 6	Clark's 7	---	Macks mill village 9
Bear River Bridge 3	---	---	---

Liverpool to
Port Mouton
Port Jolly
Sable River
Jordan Riv
Shelburne

To Cumber
Parrboro
Windsor
Parrsboro's
Randall's
Fullerton's
Jenks
Furlong's M
Bridge
Pugsley's N
Bent's Amb
Fort Cumber

Halifax to
To Truro
Lyons'
Archibald's,
mon River
Stewart's, I
Tom
Blanchard's
River
Pictou

Halifax to I
Musquod
Dartmth. F
Preston, Br

* The Parr
week, from the
(wind and wea
sail from thenc
8 o'clock in th
Horton on Fri
water after 8 o
for twice a we

Liverpool town	83-4	Putnam's farm	5	Bass ' London ' Fa-	
		Hart's	5	vern,' Sackville	9
	107	M'Keen's	11	Morrison's ' Dor-	
Port Monton	10	Leckie's	13	chester Arms,'	
Port Jolly	5	Archibald's	4	Dorchester	9
Sable River	10	Geddes'	4	Joseph Black's	3
Jordan River	8	Heney's	4	Ben Charters'	5
Shelburne	7	Dunbar's W. branch		Harper's & Kelly's,	
		E. River, Pictou	26	bend of the Pettico-	
	147	M'Kay's	8	diac River	15
To Cumberland	via	Fraser's	7	Jacques'	15
Parrsboro,		Across the harbour		Major Scott's	3
Windsor	45	to Walmsley Court		Blakeney's	7 1-2
Parrsboro' by water		House	1	Pittsfield's	10
Randall's	30			Cogle's Sussex	
Fullerton's	11		95 1-4	Vale	13 1-2
Jenks	1-2	Halifax to Antigo-		Baxter's Finger	
Furlong's Macan		nishe.		Board	12
Bridge	6 1-2	Blanchard's West		Gilles, head of	
Pugsley's Napan	9	River, Pictou	92	Bellisle	5
Bent's Amherst,	9	Chisholm's New		Cromwell's	5
Fort Cumberland	7	Glasgow	10	Watson's Washa-	
		Sutherlands, Meri-		domoak	1
	118	gomish	7	Never's & Oakley's	
		Murray's	10	Gimseg	7
Halifax to Pictou.		McDonald's Gulf		Tilly's	10
To Truro	64	Shore	10	Widow Purley's	10
Lyons'	7	Mrs. Simmond's and		Fredericton	10
Archibald's, Sal-		Wolmesley's	16		
mon River	8				292
Stewart's, Mount			145	To St. John, N. B.	
Tom	10	The road over the		Baxter's at the Fin-	
Blanchard's West		Antigonish moun-		ger Board	287
River	3	tains shortens the a-		From Baxter's to	
Pictou	10	bove distance about		De Forrest's	
		10 miles.		Hampton Ferry	12
	102	To Fredericton, NB.		Beatie's, Hammond	
Halifax to Pictou via		Bent's Amheist	125	River	10
Musquodoboit.		Wells, Hewson's,		St. John, N.B.	14
Dartmth. Ferry	1 1-2	Tantramare			
Preston, Bradley's	6	Marsh	10		273

* The Parrsboro' Packet sails regularly to Windsor and Horton every week, from the 1st April to Christmas; leaves Parrsborough on Monday, (wind and weather permitting) so as to be at Windsor on Tuesday, and will sail from thence for Parrsborough, the first high water that happens at or after 8 o'clock in the morning—leaves Parrsborough on Thursday, so as to be at Horton on Friday, and will sail from thence for Parrsborough the first high water after 8 o'clock in the morning. The packet frequently goes to Windsor twice a week.

AGRICULTURAL.

FROM THE FARMERS MANUEL.

HARVEST.

For this important business you have had a whole season or I may say nearly a whole year to prepare. I presume, not one single farmer has left this employment to be attended to collaterally, when some other jobs may be finished; but has had his eyes open upon it as a work of the first moment, and is now ready with hands, and tools, and teams, provided.— Your rye harvest first claims your attention; is the straw all turned, excepting all the joints? and is your kernel become so hard that you cannot mash it between your thumb and finger? or is the straw below the ear become so dry, that no juice can be forced out by twisting it? You may put in the sickle, if the weather is fine, and cut and bind, and stack as you go, generally. But if your stalk is very stout and your ear full and heavy, let your gavils lie, until the after part of the day, (thundergusts excepted.) You may then bind and shock, stack or cart, with safety, provided you house your grain where it can have free air, or your mows do not become too large; in this case, your grain will need more curing. The advantage of beginning early upon your harvest are several.

1. Your grain will yield more and whiter flour; will waste less by shelling. Your harvesting will be expedited, so as to prevent the waste of shelling, by having your last cuttings become too ripe, as is common when the first cuttings become fully ripe, at the commencement of harvest. You will have more time to attend to your turnip crops upon stubble lands, before the wheat harvest or after the wheat harvest. You will also be in readiness for your wheat harvest, which you may cut and manage as in your rye harvest. If you take the same precautions against heat in your grain, as in your clover, by having your mows ventilated underneath with proper openings up through the mow, for the circulation of air, the trouble will be trifling compared with the safety and benefit. When your harvest is housed, you have secured the prime object of your farm—bread, this is truly the staff of life, the basis of good husbandry and good living.

If you discover a rust upon the straw of your rye or wheat, as is common upon lands highly manured with rich compost or yard dung, you may conclude vegetation is checked, and that your grain either begins or will soon begin to shrink.

Lose no time with your sickle; cut down your grain if the kernel is formed into a consistence; the juices in the stalk will afford more nutriment to the kernel in the gavil, than

when
meth
your
or tw
state
for s
are f
savin
stubb

SA
zine
man
hend
work
from
gard
hom
also
the c
be ta
edge
also
I fou
pits,
asit
thing
tidol
won
ston
ed t
pain
secc
not
earth

It
earth
duce
pose
new
new
whe

when standing, and your crop will be saved from ruin. This method is always safe and must never be omitted. When your straw is cured, shock stack, or house it as before. One or two days in good weather, will cure your grain in this state; but if the weather proves foul, bind and stack, or shock for security, and open your stacks in fair weather, until they are fit to house. Every consideration must give place to the saving of your crop.—Ridge-in with one-bout ridges, such stubble lands as you design to winter-fallow for spring crops.

ITEMS IN RURAL ECONOMY.

SALT IN AGRICULTURE.—A writer for the Gardener's Magazine, with the signature 'Agronome,' in treating of salt as manure, &c. says in substance, that its use may be comprehended under two general heads, viz. destroying weeds and worms. I find I can keep a large coach yard perfectly free from moss and weeds, for less than a shilling a year. This to gardeners must be very acceptable. When families go from home, the weeding of pavements is often a tedious job. I can also keep my gravel walks clear of moss and weeds at a tenth the expence of breaking up, raking, rolling &c. Care should be taken in salting the walks, not to let any drop on the box edges, as it kills that also and makes it very unsightly: it has also been found to discolor some of the skirts of ladies dresses. I found it very effectual in destroying worms &c. in the tan pits, but the cure proved a great deal worse than the disease, as it chilled the whole surface of the tan for a way down. Nothing checks fermentation so much as salt; it is the chief antidote to putrefaction, and yet it acts on certain bodies in a wonderful manner. I commenced operations against the curb-stones of the tan-pit at this place, and would soon have reduced them to a heap of sand, if I had not scraped them well and painted them also. And here, I believe, I have let out the secret why salt has been supposed to be a sort of manure, as it not only kills worms and weeds, but even acts upon certain earth and stones, in a similar manner that severe frosts do.

EQUIVOCAL PRODUCTION OF PLANTS.

It is undoubtedly a very remarkable phenomenon, that the earth when dug to the depth of eight or ten feet, or more, produces many sorts of plants, provided it is advantageously exposed to the sun; but what is more extraordinary, is that this new vegetation frequently affords plants of kinds which have never been remarked in the country. It is natural to ask, whence came these plants? Can it be admitted that the seeds

of those new plants were contained in the several kinds of earth?—But could all these seeds, which had been perhaps above 3000 years under ground, without having ever been exposed to the action of the sun, have preserved the power of germinating? If we strew ashes on high and arid heaths, we shall see, some time afterwards, clover and vetches growing there, though these two plants had never before been seen on those places.—Shall we believe that the seed of the clover and the vetches were previously in the ground, and only waited for a stimulus to germinate? But how did the seeds come there? We know that high and arid heaths never produce clover; it cannot therefore be considered as proceeding from a plant which formerly grew there. But even did we admit the possibility that these kinds of earth may contain clover seed, this opinion cannot be maintained in some parts of East Friesland, where wild clover is made to grow strewing pearl ashes on peat marshes.

CHEAP AND EFFICACIOUS MANURE.

Raise a platform of earth on the headland of a field, eight feet wide, one foot high, and of any length according to the quantity wanted. On this first stratum of earth, lay a thin stratum of lime, fresh from the kiln; dissolve or slack this with salt brine from the nose of a watering pot; add immediately another layer of earth, then lime and brine as before, carrying it to any convenient height. In a week it should be turned over, carefully broken and mixed, so that the whole mass may be thoroughly incorporated. This compost has been used in Ireland, has doubled the crops of potatoes and cabbages and is said to be superior to stable dung.—[*Gardener's Magazine*.

Holidays at the Public Offices.

1st January, New Year's Day.	25th June, King William IV's accession.
17th March, St. Patrick.	5th April, Good Friday.
5th April, Good Friday.	19th August, Queen Adelaides Birth Day.
7th April, Easter Sunday.	21st August King's Birth Day.
8th April, Easter Monday.	5th November, Powder Plot.
9th April, Easter Tuesday.	23d April, St. George.
23d April, St. George.	30th November, St. Andrews.
Whit Monday.	Christmas Day.
Whit Tuesday.	

Commissioners of Light Houses.
Hon. S. Cunard and Thos. Maynard Esq.

T
E
B
R
F
H
F
P
M
T
V
N
M
S
S
M
G
R
V
S
C
H
G
L
B
A
E
V
L
C
I

Th
T
the
ing
may
but
or F
born
the
of F
with
the
pass
north
black
there
part
nel y
of the
Point
be ob
Island
very
for N
land,
the n
follow
middl
until
sens t
zier's
the S.
branch
W. br
up the
southe
are se
the na
ways l
riding.
quentl
The

SAILING DIRECTIONS.

The following are copied from Norie's Piloting Directions for North America, published in 1827.

MIRAMICHI BAY.

This is a spacious bay, having at its entrance several islands: the northern shore is fronted by some small sand islands, having channels between them and the main, into which boats may enter; behind these is an Indian village called Negowak, but the chief passage into the harbour is between Waltham or Portage Island and Fox Island: to enter this you must borrow towards the southern point of Escuminac, and pass to the southward of a long narrow shoal which stretches in front of Fox's Island, and forms the channel of 1-4 mile wide, with 4 and 5 fathoms water in it; having advanced to the northward of Fox Island, you must turn westerly, and pass between the southern point of Waltham Island and the northern point of Fox Island; on your starboard hand lies 3 black buoys which mark the edge of the Horseshoe Sand; there is also a red buoy on the larboard side of the western part of the Bay de Vin Island; through this part of the channel you will have 3-2 fathoms, and having arrived abreast of the Red Buoy de Vin, you may steer W. N. W. for Oak Point, in 3, 3-2, and 4 fathoms; here the greatest care must be observed, in order to take the passage between Sheldrake Island and the sandy spit which runs off Point Cheval; run very near the N. E. point of that island, steer S. Westerly for Nappan Bay, and round the south part of Sheldrake Island, you will then see the Old Custom House situated upon the northern shore; from whence by keeping midchannel, and following the sinuosities of the river, you will safely pass Middle Island, and have 7 and 6 fathoms without any danger, until you reach the Town of Newcastle, here the water lessens to 3 fathoms, ahead you will perceive Beaubac or Frazier's Island, dividing the channel into two passages, that to the S. Eastward is the better one, and runs into the S. W. branch of the river; that to the northward leads into the N. W. branch, both these have their rise a considerable distance up the country. The New Custom House stands on the southern shore, about 2 miles beyond Middle Island: there are several places of good anchorage about this harbour, but the navigation is in general so intricate that a Pilot will always be necessary, and he will point out the best places for riding. Spring tides rise 5 and 6 feet, and the buoys are frequently shifted.

There is good anchorage with off shore winds in the Outer

Bay, but you must not go into less than 7 fathoms water.— The Pilots' houses are four or five miles to the westward of Escuminac Point, and Pilots for this place are sometimes obtained from the Gut of Canso. Considerable quantities of timber have recently been shipped from this harbour for Europe, but a late tremendous and extensive fire having made great devastation in the adjacent woods, destroying the dwellings and property of most of the inhabitants, and reducing them to the greatest distress, it will take some considerable time before they can recover their losses, or resume their former occupations.

From the northern part of Miscou Island to Escuminac Point, the soundings are regular; and, in thick weather, the shore may be approached by the lead to the depth of 12 or 10 fathoms. In passing Escuminac Point you must give it a good berth, for a sandy spit runs off it a full league.

PICTOU.

The Harbour or river of Pictou has a bar across its entrance, having over it only 15 feet at low water; and without this is a shoal, called the Middle Ground, having the smaller depth of 7 feet. The entrance lies S. W. 1-2 S. 5 miles from the west end of Pictou Island. The windmill near the town, in a line with the beach that forms the left or south side of the entrance, is the mark to clear the Middle Ground, and for the deepest water. Within the bar and the beach the water deepens to 5, 6, and 7 fathoms, muddy bottom. This depth continues up to the town, opposite to which a mud flat extends outward so far as to leave the channel midway between the two shores. Above the town, the river divides into three branches; of these the eastern one is winding, but navigable to vessels drawing 15 feet, about 4 miles upward; at which distance the river becomes impeded by a bar, although above that the water increases. At 9 miles above the town of Pictou are the well known coal-pits, the produce of which is brought down to the bar in large flat boats. The Middle and West Rivers are navigable upward to a considerable distance. The lands hereabout being good, the population is rapidly increasing. The town of Walmisly on the north side of the harbour, is the residence of the principal merchants who load timber in these parts.

MERISOMISHE, which is an excellent bar-harbour, lies 7 miles to the E. S. E. of the entrance of Pictou: the merchants of which place have ponds here, for the reception of timber, with which a number of ships are annually laden. To sail in for this place, bring the east end of Pictou Island nearly North, and keep it so until off the harbour's mouth, where you may either obtain a pilot, or anchor in 4 fathoms. A

T
H
B
R
E
H
H
P
M
T
V
N
N
S
S
N
M
G
E
V
S
C
E
G
L
E
A
L
V
I

str
pil
de
of
the
M
Pi
tra
Fr
an
of
is
E
Bre
oth
pas
and
sho
tran
and
side
part
The
are
whi
abo
Shi
He
thir
the
Cre
Hol
cell
stre
war
win
dur
rene
war
con
C
mor
war
sout

stranger should not venture to enter the harbour without a pilot, as a ledge stretches off from either side. There is a depth of 14 feet on the bar at low water, and the vertical rise of tide is about 8 feet. The depth within is from 4 to 7 fathoms, soft mud.

PICTOU ISLAND, which lies off the entrance of Pictou and Merigomische, is cultivated, and contains about 300 acres.— Fine quarries of free-stone have been opened here, and strong traces of coal are visible in several places about the cliffs. From the east end a spit of rocks extends about half a mile; and at the E. N. E. from it, one league and a half, is a shoal of 21 feet. Between the island and Merigomische the bottom is muddy, and the depth from 11 to 7 fathoms.

THE GUT OF CANSO TO INHABITANT BAY.

REMARKS.—The Gut of Canso is formed by the Island of Breton on one side, and by the land of Nova Scotia on the other, and may be considered the best and most frequented passage for ships bound to and from Prince Edward Island and other places in the Gulf of St. Lawrence, because it is shorter, and has the advantage of anchorage in case of contrary winds or bad weather. Its length is about 5 leagues, and breadth more than three-quarters of a mile. The east side is low, with beaches but the west shore is for the most part high and rocky; Cape Porcupine being remarkably so. The deepest water is on the western shore; but both shores are bold-to and sound, excepting some sunken rocks, one of which lies near a cable's length from the eastern shore, and about midway between the southern entrance of the Gut and Ship Harbour; a second is between Ship Harbour and Bears Head, running out nearly a cable's length from shore; and a third lies off Bears Island, about 100 fathoms from the land; the depth of water over these rocks is about 6 or 8 feet. Mill Creek, Gypsum or Plaster Cove, Venus Creek, Ship Harbour, Holland Cove or Pilot Harbour, and Eddy Cove, afford excellent anchorages, with a moderate depth, and out of the stream of the tide, which generally sets in from the southward, but is very irregular, being much influenced by the winds. After strong N. W. winds, which happen daily, during the fall of the year, the water in the Gulf of St. Lawrence is rendered low, which causes the current to run northward through the Gut, at the rate of 4 or 5 knots, and the contrary happens after southerly winds.

CAPE ST. GEORGE, as before observed, is a remarkable promontory, lying at the distance of 10 1-2 leagues to the eastward of Pictou Harbour; a course of 6 leagues, thence to the south-eastward, will lead to the entrance of the Gut, whence

you may run along the Breton shore. It is to be observed that there is a ledge of rocks, in the offing, near Aubushee, already noticed; some of these are nearly dry at low water, and nearly in the direct course for the Gut; they must, of course, be carefully avoided.

Opposite Mill Creek, at the upper end of the Gut, on the Nova Scotia side, you may stop a tide, or lie wind-bound, if it does not overblow. Keep the creek open, and come to anchor in 8 or 10 fathoms, within a cable's length of the steep rocks, on the south side of the creek. The best water is with the creek's mouth open. It will be necessary to carry a hawser on shore to the rocks, to steady the ship, as the tide here runs in eddies. You may obtain fresh water from the creek at low water.

Upon entering the Gut, there will be seen, on the larboard hand, a red house, on a point, called Belle Ashe's Point, off which, at nearly a cable's length from shore, there is a sunken rock, which may be readily distinguished by the eddy of the tide. Within this point, on the S. E. is Gypsum or Plaster Cove, where shipping frequently anchor. When abreast of Gypsum or Plaster Cove, the remarkable headland, on the western side, named Cape Porcupine, will bear nearly S. W. To sail into the cove, keep nearly in the middle; and, when in 10 fathoms, let go your anchor. You will find sufficient room for swinging round, in 7 fathoms, here, off the western side of the cove is the sunken rock said to have been discovered lately, having only 6 and 8 feet over it, and lying about 60 fathoms off the shore; if this information be correct, the greatest care must be taken to avoid it.

ST. JOHN'S, OR PRINCE EDWARD ISLAND.

This Island is a distinct government, though subordinate to the British Commander in Chief in North America. It is well settled, and possesses a good soil, fit for all general purposes. The climate is commonly healthy and temperate, and not subject to such frequent and heavy fogs as Newfoundland, and the adjacent Coasts of Breton and New Brunswick generally are, nor yet to the sudden changes of weather experienced in England. The winter here sets in about the middle of December, and continues until April; during which period it is colder than in England; usually a steady frost, with frequent snow falls, but not so severe as to prevent the exertions of the inhabitants in their various employments. The weather is commonly serene, and the sky clear. In April, the ice breaks up, the spring opens, the trees blossom, and vegetation is in great forwardness. In May, the face of the country presents a delightful aspect, and affords a striking contrast to the

T
H
B
R
E
H
H
F
P
A
T
V
N
S
S
N
G
R
V
S
C
F
G
L
E
A
I
N
I

su
th
wh
ed
the
cee
sov
ye
wh
gro
fish
rou
gov
tha
hov
load
or t
Hill
side
The
for t
vale
in 2
mer
by th
C
D
Scot
sent
ed w
rell's
or St
ler o
by a
Ca
drew
coast
try is
stone
ing a
to Lis
ches;
(exce

surrounding shores. The first appearance of the Island is like that of a forest emerging from the sea ; the various red cliffs, which are not very high, then appear ; the lands are covered with lofty trees, and the sand hills on the northern side of the island are covered with verdure. Vegetation is so exceedingly quick, that in July, peas are gathered which were sown in the preceding month. The country is generally level, and abounds with springs of fine water, groves of trees, which produce great quantities of excellent timber. The greater part of the inhabitants are employed in farming and fishing. Charlotte Town, situate between York and Hillsborough Rivers, on the southern side of the Island, is the seat of government. The island contains a population of not less than 10,000 souls.

The coast forms numerous harbours, many of which are, however, fit for small vessels only. The principal loading ports at present are on the eastern side, Cardigan Bay, or the Three Rivers, and Murray Harbour ; on the S. E. Hillsborough Bay and River ; Bedeque Bay on the southern side ; and Richmond Bay and Holland Harbour on the north. The months of March or April is the best time for embarking for the colony, as in that season easterly winds are most prevalent, and a passage from England will commonly be made in 3 or 4 weeks. The post proceeds twice a month in summer, and once a month during winter, to Pictou, and thence by the packet to England.

CHEDABUCTO BAY TO HALIFAX HARBOUR.

VARIATION ALLOWED ONE POINT AND A HALF.

DESCRIPTION OF THE LAND.—The Eastern part of Nova Scotia is broken into several islands and passages as represented on the Charts. Of the islands which are low and covered with stunted fir-trees, the first on the N. E. is called Durrell's Island, the second George's Island, and the third Canso or St. Andrew's Island ; outside this latter Ireland is the smaller one, called Cranberry Island, which is now distinguished by a lighthouse.

CAPE CANSO is the outer, or easternmost point of St. Andrew's Island. From this Cape, westward, to Torbay, the coast makes in several white heads or points ; here the country is much broken ; and near the S. E. extremity many white stones appear from the offing like sheep in the woods. During a southerly gale the sea is dreadful here. From Torbay to Liscombe Harbour there are banks of red earth and beaches ; and from Liscombe Harbour to the Rugged Islands, (excepting the White Isles, which are white rocks,) the Capes

and Outer Islands are bound with black slatey rocks, generally stretching out in spits from east to west; and from the Rugged Islands to Devil's Island, at the entrance of the Harbour of Halifax, there are several remarkably steep red cliffs, linked with beach.

HALIFAX TO CAPE SABLE.

GENERAL REMARKS.—Vessels coming from the eastward, and bound for the Harbour of Halifax, should pay particular attention to their soundings, especially when they consider themselves in the neighbourhood of Sable Island; it will therefore be necessary at present to remark, that the island is low, and appears like small sand hillocks; that, in summer, it frequently is enveloped in a fog, but you may always discover your proximity to it, by your soundings; and that on its N. E. and N. W. sides are dangerous bars: you will have, except on these sides, 2 fathoms, 2 cables' length off and your depth will increase in proportion to the distance you are from it, at a general rate of about 2 fathoms for every mile, until you are more than 20 miles from it. Signals are placed on the island, and also a gun to answer such as may be heard from vessels in distress.

In making land more to the southwestward, and about Cape Sable, you must be particularly careful to avoid Seal Island Rocks and the Brazil Rock. To the westward of Great Seal Island the soundings are very irregular for upwards of 20 miles, at which distance are 45 fathoms gravel and stones. Indeed the soundings along Nova Scotia, from Cape Canso to Cape Sable, partake of the same irregularity, from 25 to 50 fathoms, therefore you should not come nearer the land than 35 fathoms, unless you are well assured of the exact part you are in, for otherwise, endeavouring to enter Halifax you may be driven into Mahone or Mecklenburgh Bays, and be caught by S. E. winds. The weather is generally foggy 4 or 6 leagues off shore, both in spring and summer; but it becomes clearer as you get nearer the coast, and with the wind off the land, it will be perfectly clear.

From 1 to 3 leagues out to seaward, mackarel, halibot, rays, haddock, and cod are found in plenty; and at the entrance to the harbours and rivers, salmon is taken from April to August; the bays abound with herrings in June and July, and with tom cod all the year round.

Mariners may always know their approach to, and arrival into, soundings by the increasing coldness of the water.

HALIFAX, the capital of Nova Scotia, is situated in $44^{\circ} 40'$ N. and longitude $63^{\circ} 40'$ W. its harbour being large enough to accommodate any quantity of shipping in perfect safety.

Its
leng
sive
The
west
and
pital
H
you
the s
there
gene
deck
excep
gan
and y
you t
and is
above
the is
men;
bute n
jacent
W. si
26' N
from
water
crey,
know
The
Weste
W. or
the lar
of a
bearin
south
distan
Ledge
mile a
quisite
nel bet
and the
16 fath
Horses
The
lie nea
a mile.

Its direction lies nearly N. and S. being about 16 miles in length, and terminates in Bedford Basin, which is an extensive sheet of water, containing 10 miles of safe anchorage.— The town is situated on the declivity of a peninsula at the western side of the harbour, about 10 miles from its entrance, and is said to have 15,000 inhabitants, a naval yard and hospital, together with a citadel.

HALIFAX HARBOUR.—In approaching the harbour of Halifax you will perceive the coast about its environs, particularly to the southward, to be rugged and rocky, with patches of withered wood scattered about, but the land is rather low in general, and not visible 20 miles off, except from the quarter deck of a 74; the high mountains of La Have and Aspotogan excepted, which may be seen 9 leagues off. When Aspotogan Hills, which have a long level appearance, bear north, and you are 6 leagues distant, an E. N. E. course will carry you to Sambro Lighthouse; this stands on Sambro Island, and is rendered remarkable by being a high tower, elevated above the sea 210 feet; there are two 24 pounders placed on the island, under the direction of a small party of artillery men; these are fired on the approach of vessels, and contribute much to the mariner's safety by warning him off the adjacent breakers. Sambro Island and Lighthouse lies on the S. W. side of the entrance to the harbour. It is in latitude $44^{\circ} 26'$ N. and longitude $63^{\circ} 35'$ W. S. by E. distant 2 full miles from the light house lies the Henery Rock, with only 8 feet water over it; and E. N. E. distant one mile from the Henery, lies the Lockwood, of 12 feet; these appear to be little known, although they are both so very dangerous.

THE LEDGES.—About two miles to the westward are the Western Ledges; these are the Bull, the Horses, and the S. W. or Outer Rock; the Bull is the westernmost and nearest to the land; this is a rock above water, lying about two thirds of a mile S. E. by E. from Pendant Point, the lighthouse bearing from it E. 7° S. The Horses are about a mile to the south eastward of the Bull, the lighthouse bearing E. by N. distant one mile and three quarters; and the S. W. Rock or Ledge, lies with the light house bearing N. E. distant one mile and a half; to avoid these, constant caution will be requisite, though they are surrounded by deep water; the channel between the Bull and the main having 10 fathoms water, and the passage clear; between the horses and the Bull are 16 fathoms, and no intermediate danger; and between the Horses and the S. W. Rock, there are 20 fathoms.

The Eastern Ledges are the Sisters or Black Rocks; these lie nearly E. by S. from the lighthouse, distant two thirds of a mile. There is also the Bell Rock, lying further in; and

about a quarter of a mile from the land, the extremity of Chebucto Head bearing N. by E. 1 2 E. distant three quarters of a mile. In advancing up the harbour you will meet with several other rocks, as the Rock Head, which lies with the Chebucto Head S. W. by W. distant 2 1-4 miles, and the Devil's Island, N. E. 1 2 E. at the same distance; the Thrum Cap, which extends from the south end of Mac Nab's or Cornwallis's Island; the Litchfield on the western side of the harbour, having only 18 feet water over it; and the Mars Rock, lying also on the western side, Point Sandwich bearing north distant half a mile, and nearly in a line with it and the west side of George's Island; all these are distinguished by buoys and flags being placed upon them. There is also a reef, called the Horse Shoe, which runs out from Manger's beach on the west side of Mac Nab's Island; this is dangerous and must carefully be avoided.

Half way between Manger's Beach and George's Island, is a shoal, on the opposite side, extending to the S. E. from Point Pleasant, nearly one third of the channel over, and having a buoy at its extremity; the thwart mark for this buoy is a little islet at the entrance of the N. W. arm, on with a remarkable stone upon the hill, appearing like a coach-box, and bearing W. S. W. Between Point Pleasant Shoal and Manger's Beach, is a middle ground of 4 1-2 and 5 fathoms, sometimes pointed out by a buoy: this middle ground extends north and south a cable's length, and is about 30 fathoms broad: as you fall off to the eastward of it there will be found from 7 to 13 fathoms water, muddy bottom; while on the west side there are from 10 to 14 fathoms, coarse rocky soundings.

Reid's Rock has 12 feet water over it, and lies in shore, about mid-way between Point Pleasant and Halifax; the thwart mark for this danger is a farm house in the wood, over a black rock on the shore, bearing W. by S.; and opposite to Reid's Rock is a buoy on the spit extending from the N. W. end of Mac Nab's Island.

TO SAIL FOR HALIFAX HARBOUR.—Having made the lighthouse, and coming from the westward, at night, with a westerly wind, the light being 7 or 8 miles off; steer E. N. E. or E. by N. until you have passed the S. W. Ledges, and the lighthouse bears north, then run on N. E. or N. E. by N. until you bring it to bear N. W. which being done, take a N. N. E. or N. E. by N. course, until you bring it W. N. W. you will then, agreeable to the wind, haul up N. or N. by E. for Chebucto Head, avoiding the Bell Rock. Chebucto Head, is bold to within half a mile from the shore; run on north, along the west shore for Sandwich Point, which also is bold;

(thus
your
ern d
whos
most
Point
posit
stretc
betwe
passe
way l
extrem
mile f
is also
the lar
red bu
land;
having
land, v
abreast
age in
east of
throw y
tween
sometim
yet bee
Obser
the Thr
buoy, a
go clear
sight, a
E. N. E.
the dista
and situa
W. W.
sail's bre
stand up
Steeple i
on, and
Shoals an
The fo
are given
ward rou
To avoid
the light
staves on
considerab

T
H
B
R
F
H
H
F
P
M
T
V
N
M
S
S
N
G
R
V
S
C
F
G
I
E
A
I
V
I

thus you will safely pass the Lichfield Rock, leaving it on your larboard side; this rock has a buoy placed on its eastern end. A mile northward of which, is the Mars Rock, whose situation is pointed out by another buoy, which also must be left to the larbord. When abreast of Sandwich Point get as near Middle Channel as you can, for on the opposite side is the Horse Shoe, a dangerous shelf, which stretches out from Mauger's Beach; steer on Mid-channel between Sandwich Point and the Horse Shoe, and having passed the latter, edge over towards MacNab's Island. Mid-way between the Island and Point Pleasant Shoals, on the extremity of which is a buoy, and rather more than half a mile further on the same side is Ried's Rock, whose position is also denoted by another buoy; these are all to be left on the larboard side. On the starboard, or opposite side, is a red buoy placed upon the Spit, which runs off Mac Nab's Island; you will sail on between these two latter buoys, and having passed the Reef, steer directly north for George's Island, which you may pass on either side and run up for, and abreast of, the town of Halifax, where you will find anchorage in 9 and 10 fathoms, muddy ground, two cables' length east of the mooring buoys, or near enough to the wharves to throw your hawser on shore. There is a middle ground between Mauger's Beach and Point Pleasant Shoal, which sometimes has a buoy upon it, but no less than 5 fathoms has yet been found upon it.

Observe in coming from the eastward with an easterly wind, the Thrum Cap shoals must be particularly avoided; a red buoy, as before noticed, now marks their extremity, and to go clear of them you should bring the easternmost land in sight, a ship's length to the southward of Devil's Island, bearing E. N. E. nearly, and steer in W. or W. by S. as best suits the distance you are from the island and according to the wind and situation; with respect to the shoals, you may pursue a N. W. W. or W. N. W. course, until George's Island comes a sail's breadth open to the westward of Mac Nab's Island; then stand up for Sandwich Point, or the fort, until St. Paul's Steeple in Halifax is open of Brenton House; keep this mark on, and you will go in the fair way, clearing Point Pleasant Shoals and Mauger's Beach; then steer on as before directed.

The following directions for sailing into Halifax Harbour, are given by Mr. Lockwood.—“In approaching from the westward round the lighthouse, at the distance of a short league. To avoid the sunken rocks which lie to the southward, when the light bears N. W. by N. haul in N. by W. The flag staves on Citadel Hill above the town are distinguishable at a considerable distance; by keeping them open of Sandwich

point, you are led clear of the Bell, Litchfield, and Mars Rocks on the west side; and the Rock Head and Thrum Cap to the east. When arrived at Sandwich Point, keep Chebucto Head in sight, by not allowing it to be shut in; this plain mark will lead in the fair way home to George's Island; leaving Point Pleasant shoals on the left, and Mac Nab's on the right, round George's Island on either side, and anchor any where in 6, 10, or 13 fathoms, muddy ground; from George's Island to the entrance of Sackville River there is not a single obstruction." Men of war commonly anchor off the naval yard, which a stranger will distinguish by the masting sheers; merchant vessels discharge their cargoes and load along side the wharves.

CATCH HARBOUR fit only for small vessels, lies to the westward of Chebucto Head, it has a bar across, with breakers, and only 9 feet water, within it are 3, and 3 1-2 fathoms; several families of fishermen are its inhabitants, who chiefly subsist by supplying Halifax markets with fish.

REMARKS.—Leaving Halifax, and sailing Westward, you will find the shores to be steep, and appear from seaward broken and rocky, with whitish cliffs; the high lands of Aspotagon and Le Have, before mentioned, are conspicuous and remarkable; to the westward the rocks about the land appear black, with reddish banks of earth. Le Have appears bald or barren at the top with red earthy hillocks under it, and between Cape Le Have and Port Medway or Jackson, are some hummocks in land, the coast to the seaward being level and low, and the shores marked with white rocks, with low barren points; from thence to Shelburne and Roseway it is woody. Near Port Latour are several barren places, and thence to Cape Sable the land is low, with white sandy cliffs particularly visible at sea.

SAMBRO HARBOUR is a mile and three quarters N.N.W. from the lighthouse: off its entrance is the Bull Rock, there are also 2 other rocks between; the best channel into the harbour is between Pennant Point and the Bull, but vessels from the eastward may run up between Sambro Island and the Inner Rock; you are to leave the Isle of Man to the larboard in entering; the anchorage is within the island, on a muddy bottom, with 3 fathoms water. The strait which connects the harbour with Londy basin is exceeding narrow, and has only 2 fathoms water. This place is generally the resort of coasters in bad weather.

NOTE—On Seal Island is a lighthouse which may be seen upwards of 20 miles in clear weather, and when the land is not visible from the deck. The lantern is 101 feet above the level of the sea; and the lighthouse is so spacious, that in case of

ship
date
B
a dis
passa
vesse
a larg
pass
rock
sever
Blond
carefu
by dir
The
will be
ber a l
of Syc

Hond
Scotia;
N. Bin
cott, S
Tobin
Clerk
and Joh
Willis,

COUN
George
Wm. H
Stewart
and Joh
Samuel
R. DeW
Poole, E
Cape Ber
Town
W. Deb
—Rober
Annapol
Digby—

T
H
B
R
E
H
H
F
P
M
T
V
N
S
S
N
A
G
E
V
S
C
H
G
L
E
A
V

shipwreck one hundred men can be comfortably accommodated.

Between the Blond Rock and the south end of Seal Island, a distance of four miles, it is generally supposed there is a good passage, which is frequently attempted; and which in small vessels may be accomplished with safety. Last year however, a large ship struck on a rock about midway in attempting to pass through, was materially injured, and nearly lost. This rock not laid down in any chart in common use, and there are several other dangerous ledges in the neighbourhood of the Blond Rock, which are not designated, and which ought to be carefully surveyed; and their bearings and distances reported, by direction of the Naval Commander in Chief on the station.

There is a new lighthouse building on Brier Island, which will be lit upon the 1st of October; and on the 1st of November a lighthouse will be erected on Low Point, at the entrance of Sydney Harbour.—EDITOR.

Province of Nova-Scotia.

HIS MAJESTY'S COUNCIL.

Honourable Samson Salter Blowers, *President*.

Honourable and Right Rev. John, Lord Bishop of Nova-Scotia; Thomas N. Jeffery, Brenton Halliburton, Hibbert, N. Binney, Enos Collins, Simon B. Robie Charles R. Prescott, Samuel Cunard, H. H. Cogswell, Peter McNab, James Tobin and Joseph Alison.

Clerk, Sir R. D. George, Bart.; Assist. clerks, Wm. Hill and John C. Halliburton, Esqrs. Chaplain, Reverend Robert Willis, D. D.

HOUSE OF ASSEMBLY.

S. G. W. Archibald, Esquire, *Speaker*.

COUNTIES—Halifax—S. G. W. Archibald, Wm. Lawson, George Smith and Jotham Blanchard, Esqrs. Annapolis—Wm. H. Roach and Jno. Johnson, Esqrs. Cumberland—Alex. Stewart and Joseph Oxley, Esqrs. Lunenburg—Wm. Rudolf and John Creighton, Esqrs. Kings—Elisha DeWolf, jr. and Samuel Chipman, Esqrs. Queens—Joseph Freeman and Jas. R. DeWolf, Esqrs. Shelburne—John Forman and Samuel S. Poole, Esqrs. Sydney—John Young and Thos. Dickson, Esqrs. Cape Berton—Jas. B. Uniacke and Lawrence Kavanagh, Esqrs. TOWNSHIPS—Halifax—Charles R. Fairbanks and Stephen W. Deblois, Esqrs. Truro—Alex. Archibald, Esq. Onslow—Robert Dickson, Esq. Londonderry—John Wier, Esq.—Annapolis—Jas. R. Lovett Esq. Granville—Jar. Delap, Esq. Digby—Charles Budd, Esq. Lunenburg—Jno. Heckman, Esq.

Amherst—Jas. S. Morse, Esq. *Horton*—Jas. Harris, Esq.
Cornwallis—John Morton, Esq. *Windsor*—
Palmouth—Wm. Shey, Esq. *Barrington*—Jno. Hower, Esq.
Liverpool—Jas. Baras, Esq. *Newport*—Felix Cochran, Esq.
Shelburn—Chas. Roche, Esq. *Yarmouth*—Clements, Esq.

Rev. R. Fitz. Uniacke, A. M. Chaplain; John Whidden,
 Esq. Clerk, J. F. Gray, Assist. Clerk—Mr. Mathew Forrester,
 Sergt. at Arms, Jno. Gibbs, Messenger and Door Keeper.

* The Members of his Majesty's Council and the Speaker
 of the House of Assembly are Justices of the Peace throughout
 the Province.

PROVINCIAL OFFICERS.—Treasurer, Charles W. Wallace,
 Esq. Secretary, Sir R. D. George, Bt.; Surveyor Genl. of
 Lands, John Spry Morris, Esq.; Comr. of Crown Lands, John
 Spry Morris, Esq.; Register of Deeds, &c. Sir R. D. George,
 Bt.; Deputy Register, Wm. Hill, Esq.; Surrogate General,
 John Spry Morris, Esq.; Principal Inspector of Pickled Fish
 for the Province, Jonathan Tremain, Esq. Postmaster Gene-
 ral for Nova-Scotia and New Brunswick, John Howe, Esq.

COURT OF CHANCERY—Chancellor, His Excellency Sir P.
 Maitland; Master of the Rolls, Hon. S. B. Robie, LL.D.
 Masters in Chancery, Hon. B. Halliburton; Lewis M. Wil-
 kins, Peleg Wiswell, and J. G. Marshall, Esqrs. Registrar,
 Nat. White Esq.; Counsellors and Solicitors, the Barristers
 and Attornies of the Supreme Court.

CLERGY OF THE ESTABLISHED CHURCH IN N. S.

The Hon. and Right Rev. John, Lord Bishop of Nova Sco-
 tia New Brunswick and their Dependencies.

Halifax—Ven. Robt. Willis. DD. Archdeacon and Rector
 of St. Paul's; Rev. Curate; Rev. Fitz. R. Uniacke, A. M. Rector of St. Georges; Rev. J. T.
 Twining, D. D. Garrison Chaplm. Windsor, Revd. Chas.
 Porter, D. D. Pres. of K. C. and Rector of Newport, Revd.
 Wm. Cochran, D. D. Rector of Falmouth, Revd. Wm. B.
 King, A. M. Vice Pres. and Tutor and visiting Missionary;
 Rev. Wm. C. King, A. M. Rector of University Church; Rev.
 J. H. Clinch, A. M. Prinsep. Collegiate School. Digby. Rev.
 Roger Viets, A. B. Annapolis, Rev. Edwin Gilpin, Rector.
 Aylesford, Revd. Mr. Trimmingham, Rector. Granville, Rev.
 Fras. Whalley. Weymouth. Rev. Alfred Galpin, A. B. Yar-
 mouth, T. A. Grantham, A. M. Horton, Revd. Jno. Clarke,
 A. M. Cornwallis, Rev. J. Moore Campbell, A. M. and Rev.
 Robt Norris, A. M. (retired.) Rawdon, Rev. Geo W. Morris,
 A. B. Sackville, Rev. John Connolly, A. M. Dartmouth,
 Rev M B Desbrisay, A B. Chester, Rev Jas Shreve, A B.

Lun
W.
burn
yeat

In
Matt
Rev.
M.
Corn
Rev
Upp
Ken
so, H
Rev.
Rev.
M'A

Pr
Rev
Rev.
J Sm
Pre
Rev J
Rev
Milla
(East
Tatar
Pre
wood
Pre
J Kei
M Gr
H Da
Rev
Robso
Syn

Rig
of No
Rev
Rev J
Bay.

Lunenburg, Rev J C Cochran, A B. New Dublin, Rev. J. W. Weeks, A B. Liverpool, Rev J T T Moody, A B. Shelburne, Rev. Thos B Rowland, LLD. Truro, Rev Jno Burnyeat, Visit Miss. Amherst, Rev R B Wiggins, A B.

Ministers of the Established Church of Scotland.

In Nova-Scotia and Prince Edward's Island. Halifax, St. Matthew's Church, Rev. John Scott. St. Andrew's Church, Rev. John Martin. Dalhousie College, Rev. T. Aitken, A. M. Dartmouth, Rev Jas Morrison. Shelburne, Cornwallis, Rev Wm Forsyth. Horton, Pictou Town, Rev Ken. J M'Kenzie. East River, Rev Don. A Fraser, Upper Settlement, Rev Jno M'Rae. Wallace, Rev Hugh M'Kenzie. Merigomish, Rev Alex Gillivray, Cape Breton, Canso, Rev Dugald M'Keichan. Lake Ainslie and Broad Ceve, Rev. A. M'Lean. Prince Edward's Island, Charlotte Town, Rev. Jas. McIntosh. Belfast, Rev Jno McLenan, Rev. R. M'Aulay.

Presbyterian Church of Nova-Scotia,

Presbytery of Truro—Londonderry, Rev J Brown. Truro, Rev J Waddell. Douglas, Rev J S Crowe. Musquodochit, Rev. John Sprott. Economy, Rev A Kerr. Sewiacke, Revd J Smith.

Presbytery of Pictou—West River, Rev D Ross. River John, Rev J Mitchell. Merigomish, Rev. W Patrick. Antigonish, Rev T Trotter. St. Mary's, Rev A Lewis, Mabou, Rev W Millar. Pictou Town, Rev J M'Kinley, A M. Upper Settlement (East River), Rev A M'Gilavrey. Richibucto, Rev J M'Lean. Tatamagouche, Rev H Ross.

Presbytery of Halifax.—Upper Shubenacadie, Rev R Blackwood. Windsor, Rev J Murdoch.

Presbytery of Prince Edward Island—Prince Town, Revd J Keir. St Peters, Rev R Douglas. Richmond Bay, Rev W M'Gregor. Bedeque, Rev R S Paterson. New London, Rev H Dunbar.

Rev Thos M'Culloch, D D. Professor of Divinity ; Rev Jas Robson, Synod Clerk ; Rev D Ray, Preacher.

Synod meets annually at Pictou.

Clergy of the Roman Catholic Church..

Right Rev Dr Fraser, Bishop of Tanen, and Vicar Apostolic of Nova Scotia, Antigonish.

Rev J Laughlin, Halifax. Rev Dennis Geary, Chezetcooks Bay. Rev James Dunphey, Prospect. Rev Mr Sygogne, St Mary's Bay. Rev John Morin, Argyle. Rev James Grant, Manchester.

ter. Rev Pere Vincent, Tracadie. Rev Henry M'Kageney Sydney. Rev Mr. M'Leod, St Margaret's. Rev Mr. Roye, Arichat. Rev Simon Lawler, St Peters.

Baptist Ministers.

Halifax—1st Baptist Church, Rev John Burton. 2d Baptist Church, vacant. 3d Baptist Church, Rev E A Crawley, A M Cornwallis, Revd Edw Manning, Rev D Harris, Revd Wm Chipman. Horton, Rev Theodore S Harding, Rev John Pryor A M. Rev James Stephens. Aylesford, Rev Ezekiel Marsters. Parrsboro', ; Annapolis, Rev Wm Elder Granville, Rev N Viditor, Nictau, Rev J E Bil. Digby, Rev Peter Crandall. Clements, Rev Israel Potter. Brier Island, Rev Samuel Bancraft. Newport, Rev Geo Dimock. Rawdon and Windsor, Rev Richard M'Learn. Falmouth, Rev R B Dickie. Yarmouth, Rev Harris Harding and Rev Wm Burton. Sissiboo, Rev Ragged Islands, Rev John Craig. Hammond's Plains, Rev Geo Richardson. Chester, Rev Jos Dimock. Wilmot, Rev Richard Cunningham. Onslow, Rev Jas Munro. Amherst, Charles Tupper. Guysboro' Rev Jas Brown. Lunenburg, Rev M Parker. Liverpool, Rev Anthony Dimock. Sydney, Rev. Henry Hull. Little Forks, Rev Chas Tupper. Windsor Road. Rev John Doyle.

Wesleyan Missionaries in the Nova-Scotia District.

Halifax—Rev Wm Dowson, Rev. Matthew Richey ; Rev. Wm. Black, supernumerary. Lunenburg, Rev Henry Pope. Liverpool, Rev George Miller. Barrington, &c. Horton, Rev John Snowball. Windsor, Rev W Crocombe, Chairman of the District. Newport, Rev W Temple, Secretary ; Rev. W Bennett, supernumerary. Parrsboro' &c. Rev. Jas G Hennigar. Wallace, Rev Thos H Davis. Yarmouth, Rev Wm M'Donald. Guysborough, Rev Wm Smith. River John, Rev Thos Taylor. Shubenacadie, Rev Thos Crosswaite. Sydney, Cape Breton Rev John Marshall. Ship Harbour, Rev Matthew Cranswick. Charlotte Town and Murray Harbour, P E I--Rev S Bamford, Rev Robt Cooney. Be-deque, &c. Rev Wm Webb.

MAILS.

MALÉ DAYS—The Eastern and St John, N B Mails, arrive in Halifax on Saturday, at 3 o'clock, p. m. and are made up every Wednesday at 1 o'clock p. m.

The western Mails are made up at the office on Mondays and Fridays at 4 p. m. and forwarded by the mail coach next morning, they arrive in Halifax every Monday and Friday at 7 p. m.

This

Chie

Shou
aft
fouTh
and t
day o
Inf

the 3d

Ass

den, A

on the

sistan

Dep.

ner E.

Just

Tuppe

Nath

ward

therfor

bald, &

der K

Willia

Just

Denoc

Jas Sk

Willia

McKa

Georg

mes, K

Smith,

Surr

Georg

Province of Nova Scotia.—Eastern Division.

This includes the Counties of Cumberland and Sidney and District of Pictou and Colchester.

Chief Justice of the Inferior Court of Common Pleas, and President of the Courts of Session in this Division,

W. L. SAWERS, Esquire.

COUNTY OF HALIFAX.

District of Halifax.

Should any alteration take place in the Commission of the Peace after the sheet which contains it has been printed; it will be found corrected in a subsequent part of the Almanack.

Districts of Colchester and Pictou.

The Supreme Court sits Pictou on the last Tuesday in May and third Tuesday in September.—At Truro on the first Tuesday of June, and fourth Tuesday of September.

Inferior Court and Sessions of the Peace, held at Pictou on the 3d Tuesday of July and 4th Tuesday in January.

Assistant Judges, Hugh Denoon, George Smith, Robt. Lowden, A. M'Carra, and Wm. Mortimer Esqrs. And at Truro on the 2d Tuesday of July and 3d Tuesday of January. Assistant Judges, Thos. I. Brown and Robt. Dickson Esqrs.; Dep. Prothonotaries George Dill Esq. Colchester; Jas. Skinner Esq. Pictou.

Justices of the Peace residing in the Dist. of Colchester, Saml. Tupper (Custos Rotulorum) John Dickson, Robt. Dickson, Nathaniel Marsters, Thomas J. Brown, James Flemming, Edward Blanchard, David V. Crowe, John Wier, William Rutherford, Alexander Campbell, John S. Fulton, Samuel Archibald, 3d, Silas Crane, James Mahan, Duncan Black, Alexander Kent, James Moore, Joseph Fulton, David B. Lynds, William Cullen jun, Charles D. Curdy, Esquires.

Justices of the Peace residing in the Dist. of Pictou, Hugh Denoon (Custos Rotulorum) Robt. Lowden, George Roy, Jas Skinner, George Smith, John Fraser, Abraham Patterson, William Mattheson, Andrew McCaig, David McLean, Robt. McKay, James Carmichael, John Olding, William Mortimer, George McLeod, Henry Hatton, David Crichton, John Holmes, Kenneth McLean, Adam Kerr, James Fraser, Richard Smith, Esqrs.

Surrogate Judges—Colchester, S G W Archibald; Pictou, George Smith Esq.

T
H
B
R
E
H
H
F
P
M
T
V
N
M
S
S
N
M
G
V
I
S
C
H
G
L
E
A
U
N

Comiss'rs for taking Special Bail on Actions pending in the Supreme Court—Colchester—G. Dill, Esq. : Pictou, Jas Skinner and H. Denoon Esquires.

Registrar of Deeds—Colchester—George Dill, Esq : Pictou, Hugh Denoon Esq.

Pictou—Col. of Light Duties, R. Corbett—Col. of Impost and Excise and Col. of Customs, H Denoon Esq. : Warehouse Keeper, Oliver Cotton Esq. Col. Imp. &c. for Colchester R. B. Dickson, Esq. Col. of Light Duties Robt. Dickson.

Dep. Sheriffs—Colchester J. Henderson : Pictou J W Harris Esqrs : Coroner J. M'Kay.

Postmasters— Pictou Alex P. Ross :—Truro John Graves :—Gay's River Saml Moore Esquires.

Comms. of Streets Robt. M'Kay, John Patterson and Geo. Campbell Esqrs.

County of Sydney,

High Sheriff, Kenneth McDonald, Esq—Dep for the Lower District, Wm Heffernan. Coroners, J H Weeks, and J G Peabody.

Supreme Court sits at Dorchester, on the 2d Tuesday of September—dep. prothy, Alexander McDonald M D.

Inferior Courts and Sessions of the Peace for the Upper District, held at Dorchester on the last Tuesday of May and third Tuesday of Oct. Assistant Judges John Cunningham and Benjn Ogden Esqrs.

Justices of the Peace residing in the Upper Districts of the County of Sydney.—John Cunningham, (Custos Rotulorum) Alexander McDonald, John Mc Donald, Robert N Henry Benjamin Ogden, James Randall, Hugh Mc Donald, William Edge, Joseph Symonds, William C Hierlihy, — Brennan, William James Corbett, Esquires. Mr W. O Heffernan C P,

Surrogate Judge Alex M'Donald, M D : Registrar Keneth M'Donald Esq : Dep Registrar of Deeds John Cunningham Esq. Dep Postmaster R N Henry Esq Antigonishe.

Inferior Court and Sessions of the Peace—for the Lower District—held at Guysboro on the first Tuesday of May and third Tuesday of October. Asst Judges Joseph Marshal and Robt Hartshorne Esqrs. Dep Prothy Wentworth Taylor Esq.

Commsrs for taking Special Bail on actions pending in the Supreme Court—Upper Dist Alexander M'Donald : Lower District Wentworth Taylor Esq.

Justices of the Peace residing in the Lower District of the County of Sydney.—Thos. Cutler (Custos Rotulorum) Joseph

Mar
Wen
liam
bell
Edw
Esq
D
W H
R N
ry's.
M'C

H
and
Su
In
on th
Asst
M'G
Co
prem
McFa
Jus
Thon
Purdy
Gaius
Robe
Micha
S C M
Sur
of Pro
Baker
Chan
Postm
wash
Joshu

This i
Chief

Marshall William Atwater, Christian Miller, Robert M Cutler
Wentworth Taylor, Patrick Lanigan, Charles Archibald, Wil-
liam McKeen, Robert Hartshorne, John Newton David Camp-
bell, Hugh McDonald, Joshua Maxwell, Thomas Glencross,
Edward Langly, John Smith, Donald Sinclair, Chas. Beodie,
Esquires. R N Henry Esq C P.

Dep Registrar of Deeds Thomas Cutler Esq Surrog Judge
W F Des Barres Esq. Post Master Robt M Cutler Guysboro
R N Henry Esq Antigonishe; Hugh McDonald Esq St Ma-
ry's. Col of Customs and Col of Impost and Excise Duncan
McColl Esq.

County of Cumberland.

High Sheriff, Joshua Chandler, Esq. Coroners, John Morse
and W Bent, Esqrs.

Supreme Court sits at Amherst on the 2d Tuesday of June.

Inferior Court and Sessions of the Peace, held at Amherst
on the 1st Tuesday of January and last Tuesday of June.
Asst Judges, Thos Roach, D McFarlan, R M G Dickey, Robt
McGowan & Wm Baker, Esqs. S H Morse Esq. Dey not'y.

Comm'rs for taking Special Bail on actions pending the Su-
preme Court—Chas Baker, Thomas Roach, S H Morse & D
McFarlan, Esqrs.

Justices of the Peace residing in the County of Cumberland.

Thomas Roach, (Custos Rotulorum) Edward Baker, Gabriel
Purdy, Daniel McFarlan, William Baker, William White,
Gaius-Lewis, John Morse, James Mc Nab, Stephen Oxley,
Robert McGowen, Dickey, John Johnston, William Smith
Michael Gordon, Luther Lusby, Thomas Watson, Esquires.
S C Morse Esq C P.

Surrogate Judge Alexander Stewart Esq. Registrar Court
of Probates, A Stewart Esq. Dep Registrar of Deeds Charles
Baker Esq. Col of Imp and Excise. Thos Chapman and Josh
Chandler Esqrs. Col of Customs Michael Gordon Esq. Dep
Postmaster S H Morse Esq Amherst: Geo Bergman Esq Pug-
wash: Jose Hustis Esq. Wallace Collector of Light Duties—
Joshua Chandler Esq

Middle Division

This includes the Counties of Hants, King's Queen's and
Lunenburg

Chief Justice of the Inferior Courts Common Please, and Pre-
sident of the Court of Session in this Division,

THOMAS C. HALIBURTON, Esquire.

County of Hants.

High Sheriff, Charles J Wilkins, Esquire.

Supreme Court sits at Windsor, on the last Tuesday of May and 4th Tuesday of September.

Inferior Courts and Sessions of the Peace held at Windsor on the 1st Tuesday of January and 1st Tuesday of July. Assist Judges, Wm Shey, John Elder, and Benj Shillitto Esqrs Dep Prothy H Jenkins Esquire.

Commissrs for taking Special Bail on actions pending in the Supreme Court, H Jenkins and Patrick Wright Esqrs.

Justices of the Peace residing in the County of Hants — Shubael Dimock, William H Shey, John Smith, Benjamin Dewolf, Joseph Sentell, Jacob Withrow, John Dimock, John Elder, Richard Smith, Daniel Wier, William O'Brien, John Allison, Patrick Wright, Thomas King, Benjamin Casey, Benjamin Shillitto, John Cochran, Benjamin Smith, William Dennison, John Otis King, Richard McHeffy, (son of Robert) Francis Parker, William Mumford, John N Grant, Esquires.

Sur Judge L M Wilkins Esq. Dep Reg of Deeds, Col. of Impost and Excise, and Dep Postmaster, Esquire, Collector of customs Windsor P Wright : Douglas R B Dickson, Esqrs. Commissrs Streets F Wright and D Dill Esqrs.

County of Kings.

High Sheriff George Chipman Esq. Coroners W. C. Moor D. Dewolfe and Jas. Allison Esqrs.

Supreme Court sets at Kentville on the 1st Tuesday of June and 3d Tuesday of September. Inferior Court and Sessions of the Peace, held on the 3d Tuesday of May and 2d Tuesday of November. Assist Judges John Chipman, William Campbell, Wm. A Chipman and James D Harris Esquires. Dep. Prothy and Commissr for taking Special Bail on actions pending in the Supreme Court, S. L. Allison Esq.

Justices of the Peace residing in the County of King's. —

John Chipman (Custos Rotulorum) William Campbell, James Ratchford, Daniel Dewolf, Samuel Bishop, Henry V. Buskirk, John Wells, Sherman Dennison, James Allison, Daniel Lockart, James Fullerton, James D Harris, William Chipman, Harris Harrington, James N. Crane, J W Maynard, Caleb H Rand, Jesse Lewis, Samuel Beckwith, David Whidden, John Morton, Elisha Dewolf, junr, William Campbell, junr. Samuel Chipman, James Harris, Junr. Simon Fitch, Thomas Tupper, Abraham Gesner, Esquires. H. Chipman c. p.

Sur. Judge and Dep Regist of Deeds for Horton, Aylesford and Cornwallis, W Campbell Esq. Ditto for Parrsboro James Ratchford Esq. Col of Imp and excise and of customs David

T
H
B
R
F
H
H
F
P
E
T
V
N
M
S
S
N
M
G
F
V
I
S
C
H
G
L
E
A
L
V
E

Whi
Moo

Hig
Sup
—Inf
the 4t
Justic
Creeb
bail or
Just
Joshua
man, S
R. De
B. Tay
Sur
Newto
Comm
Esq
Collins
Barss,
and Th

High
Rudolf
Supre
Inferior
of April
Pernett
commiss
Sup Co
Justic
Edward
Walker
Alexand
John H
Morris,
Surrop
lomon, F
tor of In
S Bruce
Streets—
Esquires

Whidden Esq. Postmasters. Elisha Dewolfe Wolfville Danl Moore Kentville, Jas Ratchford Parrisboro, Esqrs.

Queen's County.

High Sheriff Benjn Knaut, Esq : Coroner J. Whitman Esq. Supreme Court sits at Liverpool on the 1st Tuesday of July —Inferior Court and Sessions of the Peace held at Liverpool on the 4th Tuesday of April and 4th Tuesday of October. Assist. Justices Joshua Newton, Joseph Freeman, James Dewolf and Cteeb Seely Esqrs. Dep prothy and comistr for taking special bail on actions pending in the supreme court, J. Rogers Esqr.

Justices of the Peace residing in the County of Queen's — Joshua Newton (Custos Rotulorum) Isaac Dexter, Joseph Freeman, Snow Parker, Benjamin Knaut, James Goreham, James R. Dewolf, John Barss, James Dewolf, James Barss, William B. Taylor, Nathnl Smith, Esqrs. J Rogers Esq c p.

Sur Judge, Col of Imp and excise and col of Customs Joshua Newton Esq Dep Reg of Deeds and Postmr B Knaut Esqr. Commissrs of streets J R Dewolf, Jno Roberts and W Sterns Esq Firewards Jas Rogers, John H Dewolf, Benj Knaut, P. Collins, and Wm B Taylor Esqrs. Fire Engine men, James Barss, Wm M'Gill, John Dewolfe, Wm Johnson, Wm Gold and Thos Freeman.

County of Lunenburg.

High Sheriff, John Henry Kaulback Esq Coroner : J C Rudolf Esq

Supreme Court sits at Lunenburg on the last Tuesday June Inferior Courts and Sessions of the Peace on the 2nd Tuesday of April and 2nd Tuesday of October. Assistant Judges J Pernette, G Miller, and E James, Esqrs. Dep prothy and commiss'r, for taking Special Bail on actions pending in the Sup Court—D Owen, Esq.

Justices of the Peace residing in the County of Lunenburg.— Edward James (Custos Rotulorum) John Pernette, James Walker, John C Rudolf, John Evans, Garret Miller, William Alexander, John Heckman, James S Wells, Thomas Godfrey, John Hunt, William Rudolf, George Mitchell, William S. Morris, Esquires.

Surrogate Judge, J Pernette, Esq. Registrar, Geo T Solomon, Esq. Dep Registr. of Deeds, P Rudolf, Esq. Collector of Impost and Excise, T Godfrey, Esq. Prev. Officer, A S Bruce, Esq. Postmaster, J C Rudolf, Esq. Commissrs. of Streets—Wm Rudolf, John Creighton and John Heckman, Esquires.

Western Division.

This includes the counties of Annapolis and Shelburne,
 Chief Justice of the Inferior courts of common Pleas and Pre-
 sident of the courts of Session in this District.

THOMAS RITCHIE, Esq.

County of Shelburne.

High Sheriff, John Bingay, Esq. Coroner, G. Bingay, Esq.
 Supreme Court sits at Shelburne on the 2d Tuesday of July.
 Inferior Court and Sessions of the Peace for the district of Yar-
 mouth and Argyle, held at Tusket Village on the 1st Tuesday
 of May, and at Yarmouth on the 4th Tuesday of September,
 Asst. Judges, Samuel S. Poole, Henry G. Farish, Gidn White,
 Ebenr. Crowell, Jacob Van Buskirk, T. Crowell and W. Sar-
 gent Esqrs. Dep. prothy M. H. Huntington Esq. Ditto Distr.
 Shelburne, held at Shelburne on the 2d Tuesday May and 2d
 Tuesday Sept.

*Justices of the Peace residing in the District of Yarmouth and
 Argyle.*—Samuel S. Poole—Custos Rotulorum; Henry G. Far-
 ish, John Bingay, Gabriel Van Norden, Joseph Kelly, Benja-
 min Bingay, John McKinnon, David Van Norden, Abraham
 Lent, James Bond, A. V. S. Forbes, Esqrs. and Revd. John
 B. Robin.

Justices of the Peace residing in the District of Shelburne.—
 Gideon White (Custos Rotulorum) Jacob Van Buskirk, Jas.
 Lent, Ebenezer Crowell, Obadiah Wilson, Thomas Crowell,
 James Barclay, Robert Currie, John Homer, Wm. Sargent,
 Esquires.

Surrogate Judge Gideon White Esq. Dep Reg of Deeds,
 western dist H. G. Farish Esq. Collectors of Imp. and Exc.
 Yarmouth H G. Farish Esq—Shelburne Jacob V Buskirk Esq.
 —Weymouth R Hankisson Esq. Collectors of Customs Shel-
 burne—J V Buskirk—Weymouth R Hankinson—Barrington,
 J Homer—Argyle I M'Kinnon—Yarmouth A V S Forbes Esq.
 Collector light duties Dist Yarmouth, C N Bond Esq. Postmr.
 Joseph Weiser Shelburne.

County of Annapolis.

High Sheriff, E H Cutler, Esq.—coroners, Sil Snow. Wm.
 Young, J R Lovett, and David Hall, Esquires;

Supreme court sits at Annapolis on the 2d Tuesday of June
 and 2d Tuesday of September. Inferior courts and Sessions of
 the Peace held at Annapolis on the 3d Tuesday of April, and
 1st Tuesday of November, and at Digby on the 1st Tuesday
 of July and 3d Tuesday of December, Asst. Judges, E Mor-
 ton, C U Jones and W F Bonnell, Esqrs. Dep prothy and

com
 Cou
 Ju
 Elka
 Mor
 drew
 Cere
 Lanc
 thony
 rande
 Charl
 Colin
 son (C
 Sur
 Dist.
 Light
 Golds
 polis;

Chief J

High
 seph N
 Supr
 and at
 courts
 at Syd
 Octobe
 of Apri
 dist. at
 Novem
 northern
 teret, so
 western
 Sydney
 bou, J I

Justic
 Archibal
 E Leona
 fus, Nor
 M'Kinn
 C Barrir
 Justice

com taking Special Bail on Actions pending in the Supreme Court— E Cutler, Esq.

Justices of the Peace residing in the County of Annapolis.— Elkanah Morton, Samuel V Bayard, John Whitman, John Morehouse, John M, Sigogne, Thomas Ritchie, (son of Andrew) Joshua Quereaux, John Wiswall, William F Bonnell, Cereno U Jones, Charles Jones, William Bent, William De Lancey, Samuel Campbell, Samuel Chesley, Samuel Hall, Anthony Hannan, Samuel Doucette, John Ditmars, Joseph Fitzrandolf, Thomas James, Charles McCarthy, George Robinson, Charles Budd, James Hall, James R Lovett, Thomas Parker, Colin Campbell, David Nichols, Benjamin Potter, John Robinson (of Digby) William Spur, Esqrs.

Surrogate Judge ———. Dep Reg's Deeds, East. Dist. Wm Winniett, Esq. Western, S. Jones Esqr, Col. of Light Duty, of Imp. and Excise and collector. of Customs, H Goldsmith, Esq. Dep Postmasters, S Cowling, Esq Annapolis; W F Bonnell, Esq, Digby.

County of Cape Breton.

Chief Justices of the Inferior courts of Common Pleas, and President of the courts of Sessions in this County.

JOHN G. MARSHALL, Esquire.

High Sheriff, John Fuller, Esq. Coroners—John Smith, Joseph Noad, and John McDonald Esqrs.

Supreme Court sits at Sydney on the last Tuesday of August and at Arichat on the 1st Tuesday of September. Inferior courts and Sessions of the Peace for the northern district, held at Sydney on the 2d Tuesday of March, and 4th Tuesday of October; for the Southern dist. at Arichat on the 2d Tuesday of April and 2d Tuesday of November; and for the western dist. at Port Hood on the 3d Tuesday of April and 3d Tuesday November. Asst. Judges, Thomas Crawley and John Leaver northern dist. Clement Hubert, John Jean and Peter De Carteret, southern dist. John Watts and William M'Keen, Esqrs western dist. Proth'y for the county, C E Leonard, Esq. Sydney. Dep prothon'ys—at Arichat, A Madden, Esq. at Mabou, J L Tremain, Esq.

Justices of the Peace residing in the North Eastern District. Archibald C Dodd, Thomas Crawley, Richard Gibbons, Chas E Leonard, Peter Hall Clarke, William Gammell, James Duffus, Norman M'Leod, Robt Gammell, Jacob S Ingraham, John M'Kinnon, Richard Smith, John Meloney, Alexander Munro, C Barrington, senr, Charles M'Alpine, W R Bown, Esquires.

Justices of the Peace residing in the Southern District.— Cle-

ment Hubert, Charles McNab, Andrew Maddan, Thomas E Chandler, Nicholas H Martin, John Jean, John Janvrine, Peter De Carteret, William Crichton, Morgan Doyle, Dougald, B McNab, John Luce Esquires.

Justices of the Peace residing in the North Western District, William Watts, John Campbell William McKeen, Hugh McMullan, Nicholas Paint, John Lewis Tremain, Izad Hart, Jas Hawley, Henry Taylor, Nathaniel Clough, Kenneth Chisholm, Murdoe McPeakill, Andrew McDonald, H Skinner Esquires.

Registrars of Deeds—western district, J L Tremain—*southern* J Turnbull—*northern,* C R Ward, Esqrs. *Collector,* J W Benn, Esq. *Comptroller,* C E Leonard, Esq. *Surveyor and waiter,* J Jean, Esq. *Collectors of Impost, Excise, & Light Duty—*Chas E Leonard, Sydney; J L Tremain, west district; J Turnbull, Arichat. *Dep Postmasters.* Jos Noad, Sydney; John Fuller, Arichat; J McKeen, Port Hood; N Clough Ship Harbour. *Surveyor General of Lands and Sur. Judge* Thomas Crawley, Esq. *Judge Probates.* Wm Delaney, Arichat, J L Tremain, Port Hood. *Health Officer for the Port of Sydney,* Doctor Thomas E Jean.

BARRISTERS AND ATTORNIES AT LAW OF THE SUPREME COURT RESIDING IN THE PROVINCE.

Halifax—Hon. H. Cogswell, D. S. Clarke, S. G. W. Archibald, J. W. Nutting, Wm. Hill, C. R. Fairbanks, Jas. W. Johnson, Wm. Q. Sawers, N. W. White, W. B. Bliss, Beamish Murdock, Alex. Primrose, Jas. Tremain, Charles Twinings, Jas. B. Uniacke, J. J. Sawyer, J. F. Gray, William Fleigher, Jas. Stewart Clarke, Wm. Young, C. W. H. Harris, Hugh Hartshorne, E. H. Harrington, Lawrence O'C. Doyle, John C. Halliburton, W. Bowman, Wm. Sutherland, and Thomas B. Aitken, J. W. Ritchie, E M Archibald, Henry Pryor, M H Perley, Silas L. Morse, Bryan Robinson, Nepean Clarke, Archibald M McQueen, Esqrs

Pictou—Thos. Dickson, Jotham Blanchard, Henry Blackadar, Martin Wilkins, and Edward Roach, Esqrs. Truro—Jona. Marsters, John D. Archibald, and Jas. S. Clarke, Esqrs Annapolis—H. Goldsmith, John Johnson, W. H. Lee, Jas A. Dennison, C. T. MacColla, Esqrs. Digby—G. K. Nicholls' Esq. Bridgetown—Stephen Bromley, Esq. Amherst—J. S. Morse, Alex. Stewart, Charles D. Roach, and Silas C. Morse' Esqrs. Kentville—John Whidden, Jno. C. Hall, Stephen H. Morse, and Wm. E. Smith, Esqrs. Windsor—H. A. Emerson, L. M. Wilkins, Harry King, Esqrs. Newport—D. D. Stewart, Esq. Antigonish, John Thos. Hill, and Alex. Mc Dougall, Esqrs. Yarmouth—W H Keating Esq. Guysbo. rough—W. F. Des Barros, Esq. Liverpool—Wm. Sterns, S.

T
H
B
R
E
H
H
F
P
M
T
V
N
M
S
S
N
M
G
E
V
S
C
H
G
L
E
A
I
V

P. F
Jno.
Bolu
(Aric
—R.
No
and
Su
Blow
Wilk
Wisw
L. L.
sel, V
throug
Nuttin
Cox
Cogsw
Walla
Cou
Counc
nies of
Cou
vocate
Chas.
Regist
Advo
Suprem
Cour
Dep. G
Hon
Patron,
Gove
Right
Chief J
Speake
Solicito
Preside

P. Fairbanks, Snow Parker, Freeman, Esqrs. Lunenburg,
Jno. Creighton, G. F. Solomon, Charles B. Owen, and Chas.
Bolman, Esqrs. Chester—Wm. Greaves Esq. Cape Breton.
(Arichat) Wm. C. Delany, and Jas. Turnbull, Esqrs. Sydney
—R. Gibbons and E. M. Dodd, Esqrs.

Non-residents practising in Cumberland, E. B. Chandler
and James Stewart, Esqrs.

SUPREME COURT—Chief Justice, Hon. Sampson Salter
Blowers; Puisne Judges, Hon. B. Halliburton, Lewis M.
Wilkins, and R. J. Uniacke, Esqrs.; Associate Judge, P.
Wiswell, Esq. Attorney General S. G. W. Archibald, Esq.
L. L. D. Sol. Gen. Charles R. Fairbanks, Esq. King's Coun-
sel, William Hill, Clerk of the Crown and Prothonotary
throughout the Province, Wm Thompson, Esq; Deputy W.
Nutting, Esq.

COMMISSIONERS OF THE REVENUE—Hon. S B Robie, H H
Cogswell, William Lawson, Lawrence Hartshorne, and C W
Wallace, Esqrs. Wm Newton, Esq. Clerk.

COURT OF ERROR, MARRIAGE AND DIVORCE.—His Majesty's
Council; Advocates and Proctors, the Barristers and Attor-
nie's of the Supreme Court.

COURT OF VICE ADMIRALTY.—Judge Hon S S Blowers; Ad-
vocate Genl. S G W Archibald, Esq. L.L. D Solicitor Genl.
Chas. R Fairbanks, Esq; Registrar, L Pennell, Esq. Dep
Registrar, J S Tremain, Esq. Marshall, S W Deblois, Esq.
Advocates and Proctors, the Barristers and Attornies of the
Supreme Court.

COURT OF ESCHEATS AND FORFEITURES.—Commissioner
Registrar, Sir R. D. George, Et
Dep. Reg. William Hill, Esq.

Commissioners for Light Houses.

Hon Saml Cunard, and Thos Maynard, Esqr.

King's College Windsor.

Patron, His Grace the Lord Archbishop of Canterbury, Visitor,
the Lord Bishop of Nova Scotia.

Governors, His Excellency the Lieutenant Governor, the
Right Rev'd the Lord Bishop of Nova-Scotia, the Hon. the
Chief Justice, the Judge of the Court of Vice Admiralty, the
Speaker of the House of Assembly, the Attorney General, the
Solicitor General, the Secretary of the Province, the Revd the
President of the College and the Rev Dr Cochran.

President and Professors of Divinity and Hebrew the Rev Chas Porter D D. Vice President, Professor of Grammar, Rhetoric and Logic, and acting Professor of the moral Sciences and Metaphysics, Rev W. B. King A M. Fellow and Bursar.

Acting Professor of Mathematics, Natural Philosophy and Astronomy, John Stevenson, A M. Sec'y and Treasurer. ———— Esq. Librarian ———— ; Academy under the direction of the Governors of King's College, Principal, Rev J H Clinch, A M.

County of Halifax.

Town and district of Halifax Proper—High Sheriff of the County, John James Sawyer, Esq. Coroner, James F Gray, Esq.

High court of Chancery held before the Master of the Rolls, every Monday.

Supreme Court sits at Halifax on the 2d Tuesday of Jan 3d Tuesday, April, 2d Tuesday of July, and 3d Tuesday of October.

Inferior Court sits on the 2d Tuesday, of March, June, Sept. and Dec.—Jas Forman, senr Jno Howe. sen. and Wm Lawson Esqrs.

Commissioners' Court sits the 1st Monday of every month, Comrs James Forman, Senr Jas Tobin, Richd Tremain, Jno Liddell, and D S Clarke, Esqrs clerk, Napean Clarke, Esq.

Police Office open every day throughout the year, (Holidays excepted.)—Justices, John Liddell, H Yeomans, Mat. Richardson, Esqrs.—D S Clarke, Esq. clerk.

Sessions of the Peace held on the 1st Tuesday of March, June, Sept and Dec.

Justices of the Peace of and for the County Residing in the District of Halifax.

Jas. Forman, senr. [Custos Rotulurum]; John Howe, senr. Rufus Fairbanks, Samuel Head, M D, Jno. Liddell, Rich Tremain, H Yeomans, P McNab, Wm Lawson, S Albro, J Albro, M Tobin, M Richardson, Thos. Holland, Isaac Rayne, H Y Mott, Jno. Allen, G. N. Russel, John Leander Starr, Wm. H Roah, H A Gladwin, Jno S. Morris, J H Tidmarsh, J N Shannon, John Howe, John A. Barry, James Benvie, William Anand, William Stewart, William K. Reynolds and H Lowe, Esquires. D. S. Clarke, C. P.

Commissioners for Visiting the Poor-House.

Hon T. N. Jeffery, Jas Forman, H. Yeomans, Richd. Tremain, M. Tobin, G. N. Russell, Thos. Pyke, Mathew Richardson, Jos Allison, John S Morris, and J N Shannon Esqrs.

Hon.
Richard
Hodges
W. M.
sen. coll

Hon T
troller, I
searchers
mett. Lo
F. W. A
Errol Bo
boatmen.

Comrs.
under An
lotage of
W. Pryor

Rich. T
and Treas
banks and
J. E. Fair
L. Hartsh
N. Russel
Ward, Joh
J. Liddell
Ward, M.
Hon. S. C
Committe
direct at F
or, and J C
rect the Ax

Fire

First Div
Thomas Ma
well; Donal
Mahony, F
Liswell, W

Officers of the Provincial Revenue.

Hon. H. N. Binney, collector of impost and excise ; Andrew Richardson, Esq. gauger and weigher. James Barrett, Robert Hodges, and Geo. Sherlock, waiters and shipping officers. W. M. Deblois, collector of the licence duty. Edw. Duckett, sen. collector of light duty.

Officers of His Majesty's Customs.

Hon Thos. N. Jeffery, collector, John Wallace, Esq. comptroller, D. H. Watson and Jos. Dean, Esqrs. waiters and searchers. Wm. Isea, Esq. Warehouse Keeper, R. Dimmett. Locker. Edw. Duckett sen. survey, officer of shipping. F. W. Acheson and T. Holden, tide surveyors, R. B. Young, Errol Boyd, Alex. Hays, tidesmen. J. Wall and W. Hays, boatmen.

Comrs. to examine and Select Pilots for the Port of Halifax, under An Act passed in 1830 Entitled "an act to regulate Pilotage of vessels at the Port of Halifax"—Michael Head R. N. W. Pryor, Jas. H. Tidmarsh and Ewd. Cunard, Esqrs.

Fire Wardens of the Town of Halifax.

Rich. Tremain, Esq. Chairman.—John Albro, Esq. Sec'y and Treasurer. South Suburbs, Edw Pryor jr. C. R. Fairbanks and Jas. Tremain, Esqrs.—St. Peter's Ward, J. Albro, J. E. Fairbanks and Jas. Bain, Esqrs.—St. Matthew's Ward, L. Hartshorne and J. A. Barry, Esqrs.—St. Paul's Ward, G. N. Russell and W. A. Black, Esqrs.—County Court House Ward, John Dupuy and Thos. Boggs, Esqrs. St. John's Ward, J. Liddell, J. Clark Esqrs. and Hon. Jos. Allison,—Barrack Ward, M. Tobin and S. W. Deblois, Esqrs.—North Suburbs, Hon. S. Cunard, J. N. Shannon, and J. Dempster, Esqrs.

Committee of the Fire Wardens appointed to manage and direct at Fires—Rich Tremain, Thos Boggs, Jno Albro, E Pryor, and J Clarke, Esqrs—E Pryor and J Clarke Esqrs, to direct the Axe-men.

Fire Engine Company for the Town of Halifax.

James Dechman, Captain.

First Division—David Hutton, Lieutenant. ; Henry Hill, Thomas Mackie, Thos. Pallister, Wm. J. Rodgers, Wm. Caldwell; Donald McLennan, Timothy Conners, Wilm. Murray, Mahony, H St. Andrews, Joseph Bennett, F Sturmy, Wm. Liswell, Wm. Flynn, H. Langley, H. G. Hill, and H. Morse

Second Division—Thomas Cassedy, Lieut. ; Jas Carmichael, Edward Sturmy, J. Drillio, Andrew Crawford, Daniel McLean, Thos Wilson, Charles Hunter, Jeremiah Muhlig, John Richardson, Benj Smithers, Jas Malcolm, John Johnson, Joseph Scriven, William Miller, Thos Sutton, Ths Lownds, W G Anderson and John Anderson.

Third Division—Geo Little, Lieut ; Henry Spike, Jas Thomson, R Haverstock, Saml. Carten, Peter Manson, James Thomson, 2d, Israel Thomas, R A Bigby, Secretary, William Dillon and George Marlin.

Fourth Division—Michael Byren, Lieut. ; Elias Cabot, John West, Robt Norris, Alex. Boyle, Robert Woodill, Philip Sparling, John Winters ; James Smith, Honorary member and Treasurer.

Axe Fire Men.

Robert Richardson, Captain ; Michael Creamer, Lieut. Thos. McKie, sec'y ; George Jost, Peter Hall, Jn McNeil, Errol Boyd, Wm. Marvin, Jas. Grant, Henry Miller, Wm. Strickland, William Rose, Matthew Lownds, Wm. Johnston, James McNut, Patrick Mahony, John McPherson, Wm. Fenerly, Samuel George, Archibald Layng, James Lownds, truckman.

Halifax Banking Company.

Hon. H. H. Cogswell, President, Wm Pryor, Esq. Vice President, Hon. Enos Collins, Hon S. Cunard ; Hon Jas. Tobin, Jno. Clark, Esq. Hon. Joseph Allison, and Martin Black, Esq. N. T. Hall, Esq. cashier. Mr. J. C. Wilkie, Mr. A Fraser and Mr. Charles Wilkie, clerks. Mr. Jos. Keefer, messenger.

Discount Days—Tuesdays and Fridays. Notes to be left with the Cashier, the day previous before 12 o'clock.

Bank of Nova Scotia.

William Lawson, Esq. President, M B Almon, S N Binney, W F Black, Lewis Bliss, W B Bliss, John Brown, James Donaldson, J W Johnston, James Leishman, Wm Murdock Alexr. Murison and James B Umacke, Esqrs. Directors. Jas Forman, Esq. cashier ; Mr. Benjamin Carlisle, and Mr. Henry Mundell, Tellers ; and Mr. James Maxwell, Messenger.

Days of Discount, Tuesdays and Fridays. Notes to be left with the cashier, the day previous before one o'clock.

In Nov
Genl

Aides
Boyle,
ft. ; De
Q. M.
John B
Cols R
Genl A
Oliver C
Inglis,
Colin
Pitcairn
Stewart

Garris
MacColl
Windsor
M Cha
Rev.

Comm
Ordnan

J W
keeper.
Clerk, M
son, and

Major

Mr Cr
Goudge

Vice A
mander i
land Sta
The Hon
WING

STAFF OF THE ARMY.

In Nova-Scotia under the command of His Excellency *Lieut. Genl. Sir PEREGRINE MAITLAND, K. C. B.

Lieut. Colonel HARRIS, Commandant.

Aides-de-camp Capt. Deedes, 34th ft. and Lt. Hon. Robt. Boyle, 79th ft. ; Military Secretary. Capt. P. Maitland, 74th ft. ; Dep. Adj. Gen. Lt. Col. H. B. Harris, h p 86 ft. ; Dept. Q. M. G. Lt. Col. H. G. Broke ; Major of Brigade. Major John Bazalgette, h p Unatt ; Insp field officers of Militia Lt Cols R R Loring, *W Marshall and P Grieve ; Asst Com Genl A. S. Robinson, Esq ; Dep Asst Com Genls Jas Slade, Oliver Goldsmith, Wm. Low, Chas Williams, and Richard Inglis, Esqrs.

Colin Allen, M D Surg to the Forces ; Asst Surgs David Pitcairn, J Y Skelton, A. T. Jackson, Saml M Hadaway, Jno Stewart ; Jno Carter, Apothecary to the Forces.

Garrison of Halifax ; Col Harris, Commandant. Lt. J. MacColla, Town Major—Rev J T Twinning, D D Chaplain. Windsor, A McDougal, Esq Barrack Master, Rev W C King M Chaplain. Annapolis, J Norman, Esq Barrack Master Rev. , Chaplain.

Respective Officers of the Ordnance.

Commanding officers of Engineers, Do of Royal Artillery, Ordnance Storekeeper, Deputy Ordnance Storekeeper.

Officers of the Ordnance Department.

J W Tapp Esq. Storekeeper, Henry Ince Esq Dy Storekeeper. Mr C H Fife, 1st Clerk, Mr James Forrester 2d Clerk, Mr J W Tapp 3d Clerk ; Mr Isaac Rigby, Mr J Barton, and Mr H P Dixon, Clerks.

Barrack Branch.

Major Blair, Barrack Master.

Royal Engineer Department

Mr Creed, Clerk of Works, Mr Rogers Senior Clerk, Mr Goudge 2d and Mr Creed 3d Clerks.

THE NAVY.

Vice Admiral Sir Edward Griffith Colpoys, K. C. B. Commander in Chief on the West India, Halifax and Newfoundland Station, &c. &c. &c. Edward Lawes, Esq. Secretary The Hon. A. W. Monckton, Flag Lieutenant.

WINCHESTER, 52 Guns—Flag Ship—Captain the Hon

William Wellesley ; Commander ; Henry Griffith Colpoys ; Supr. Commander, H. W. Bayfield, Lieuts, Arthur Wakefield, Charles Botton, John Stoll ; Supernumry Lieuts P. E. Collins, Thomas Smyth, Captain Marines, John Hewes, Master, James Napier ; Purser, Thomas Gliddon ; Chaplain, Rev John M. Edwards ; Surgeon, Arthur Savage ; Asst. Surgeons, R. H. Brown, Robert Fairservis, James Jackson.

BLANCHE, 46 Guns—Commodore A. Farquhar, C. B & K. H. Commander, William Burnett ; Lieuts. Henry Stroud, Edward Lake, S. H. Ussher ; 1st Lieut Marines, R. W. Pascoe ; 2d Lt Marines, A. S. J. Walsh ; Master W. C. Middlemist ; Purser, R. M. Read ; Chaplain, J. H. Malet, Surgeon. John Armstrong ; Asst. Surgeon, J. J. Lancaster.

PALLAS, 42 Guns—Captain William Walpole, Lieuts. J. W. Noble, Horatio Blair, W. C. Nowell, Geo. St V. King ; 1st Lieut. Marines, John Collins ; 2d Lieut. Marines, E. Foker ; Master, Edward Rose ; Purser, John Porter ; Chaplain Revd N. T. Royse ; Surgeon, John Hately ; Asst. Surgeon, Henry Holmes.

NORTH STAR, 28 Guns—Captain, the Right Hon. Lord William Paget ; Lieuts John Parsons, R. G. Welch, C. H. M. Buckle ; Master, George Parsons ; Purser, E. F. Heaslop, Surgeon, Robt Espie ; Asst. Surgeon, James C. McWilliam,

ARIADNE, 28 Guns—Captain, Charles Phillips, Lieuts. W. S. Blount, Augs. Lavie, John Russell ; 1st Lieut Marines F. S. Hamilton, Master, J. R. Fittock, Purser, C. H. Osmer-Surgeon, Edward Hilditch, Asst. Surgeon, William Hobbs,

SAPPHIRE, 28 Guns—Captain the Hon G. R. W. Trefusis, Lieuts Thomas Gregory, Fred. Gilly, Lionell Halliday, 2d Lieut Marines, P. T. M. Payne, Master James Tonkin ; Purser, William Krane, Surgeon, Harry Goldney, Assist Surgeons, David Grant, C. K. Nutt.

COLUMBINE, 18 Guns—Commander, H. O. Love, Leut. R. R. Metherell, R. E. Bullen, Master John Pyke, Purser, John Tindall, Surgeon, Alex. Smith ; Asst Surgeon, T. H. Nation.

GANNET, 18 Guns - Commander, M. H. Sweny, Lieuts, Thomas Lyel, Henry Wright, Master, John Halcrow ; Purser, John Tayler ; Surgeon, Robert Holden ; Asst. Surgeon, John Andrews.

RACEHORSE, 18 Guns—Commander Francis V. Cotton, Lieuts. Thomas Hope, George M. Hunter, Master, James Cooper, Purser, James Halse ; Surgeon, Joseph Stevenson ; Asst. Surgeon, Alex. Sanderson.

SPA
Currie
B. Co
AR
Lieuts
Maple
Coats.
TW
George
Tucke
well ;
FLY
Charles
Purser
William
VIC
Charles
ser. Ho
Brown
PEA
George
ser Fra
Munro.
MAC
Lieut.
John B
Kittle.
NIM
Surgeo
FIR
Surgeo
SPE
Asst. S
SKII
Surgeo
PICE
geon, V
PIN
Surgeo
MIN
Surgeo
KAN
Surgeo
MO

SPARROWHAWK, 18 Guns—Commander, Thomas M. Currie ; Lieuts. Edward Stopford ; Master, T. B. Codnor ; Purser, John Lord ; Surgeon, R. C. Nutt.

ARACHNE, 18 Guns—Commander, William G. Agar ; Lieuts. John B. Woodthorpe. A. J. Bulman ; Master Henry Mapleton ; Purser, John Warwick ; Asst. Surgeon, Andrew Coats.

TWEED, 20 Guns - Commander; Allan Bertram ; Lieuts. George Kennedy, Francis W. Austen ; Master, James B. Tucker ; Purser, Thomas McKnight ; Surgeon, William Bothwell ; Asst. Surgeon William Orr ;

FLY, 18 Guns—Commander, Peter McQuhae ; Lieuts. Charles Serjeantson, D. C. Cumby ; Master, John Rogers ; Purser, E. M. Denby ; Surgeon, Charles McArthur, Asst Surg. William Bayne.

VICTOR, 18 Guns—Commander, Robert Russell ; Lieuts. Charles F. Brown J A. Abbott ; Master, H. J. Strutt ; Purser. Henry South, Surg. John West ; Asst Surgeon, Samuel Browne.

PEARL, 20 Guns - Commander, Robert Gordon ; Lieuts. George Beaufoy, Jas. Heysham ; Master, F. S. Fraser, Purser Francis Lean ; Surgeon, Alex. Lane ; Asst Surgeon, G. A. Munro.

MAGNIFICENT—*Convalescent Ship at Jamaica.* 4 Guns. Lieut. Commr. John Paget ; Master, W. E. A. King ; Purser, John Bryan ; Surgeon, Jerh. Riordan ; Asst. Surgeon, James Kittle.

NIMBLE, 5 Guns—Lieut. Commr. J. M. Potbury ; Asst. Surgeon, James Lowry.

FIREFLY, 5 Guns - Lieut, Commr. J. J. McDonnell, Asst. Surgeon, John McRae.

SPEEDWELL, 5 Guns—Lieut Commr. James Hookey, Asst. Surgeon, R. W. Campbell.

SKIPJACK, 5 Guns— Lieut. Commr. W. Shortland ; Asst. Surgeon, Thomas E. Ring.

PICKLE, 5 Guns—Lieut Commr. Chris. Bagot ; Asst. Surgeon, William Martin (c).

PINCHER, 5 Guns - Lieut Commr. William Croke ; Asst. Surgeon. John Mellroy,

MINX, 3 Guns—Lieut. Commr. John Simpson(c) ; Asst. Surgeon. G. E. Oughton.

KANGAROO, 3 Guns—Lieut Commr. Asst. Surgeon, William Pennycook.

MONKEY, Tender to Flag Ship—Lieut. Comr.

ECLIPSES IN 1833.

There will this year be eclipses of the Sun on the 20th Jan. and 17th of July; neither of which will be visible in this Province; the former will be central and annular in South America, Australia, and the South Pacific; the latter will be central and total in the north of Europe and Asia.

Of the Moon there will be eclipses on the 6th of January, the 1st of July, and the 2ith of December, all of which will be wholly or partly visible, as follows.

ECLIPSE OF JANUARY 6TH.

	h.	m.
Beginning of the Eclipse,	1	35, 6 M.
Ecliptic Opposition,	2	38, 7 "
Greatest Obscuration,	2	50, 1 "
End of the Eclipse,	3	59, 4 "

Digits eclipsed 5 deg. 43 min. on the northern limb of the Moon.

ECLIPSE OF JULY 1st.

	h.	m.
Moon rises after the beginning of the Eclipse,	7	5, A.
Ecliptic Opposition,	7	23, "
Greatest Obscuration,	7	29, "
End of the Eclipse,	8	37, "

Digits Eclipsed 10°, 19' on the northern limb of the Moon.

TOTAL ECLIPSE OF DECEMBER 26TH.

	h.	m.
Moon rises, <i>totally</i> eclipsed, at	4	0, 0 A.
Nearest approach of Centre,	4	10, 1 "
End of the Total Eclipse,	5	8, 9 "
End of the Eclipse,	6	7, 8 "

THE PLANETS AND THEIR RELATIONS.

☉ The Sun	♁ Vesta	♄ Saturn
♁ The Earth	♃ Juno	♅ Uranus
☾ The Moon	♀ Pallas	
☿ Mercury	♁ Ceres	♄ Conj. with same long.
♂ Mars.	♃ Jupiter	☐ Quad. with dif 90°
♀ Venus		♁ Oppo with dif 180°

SIGNS OF THE ZODIAC.

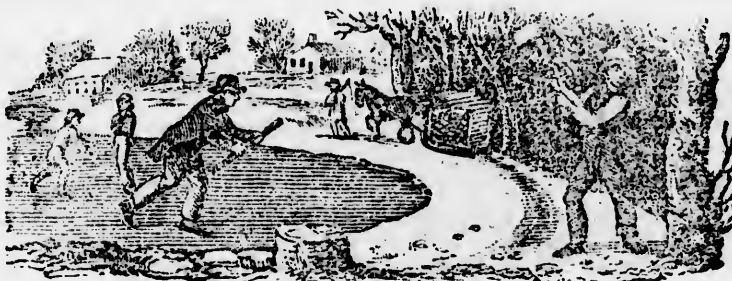
♈ Aries	♌ Leo	♐ Sagittarius
♉ Taurus	♍ Virgo	♑ Capricornus
♊ Gemini	♎ Libra	♒ Aquarius
♋ Cancer	♏ Scorpio	♓ Pisces

CHRONOLOGICAL CYCLES FOR 1833.

Dominical Letter	F	Solar Cycle	22
Lunar Cycle or Golden Number	10	Roman Indiction	6
Epact	9	Julian Period	6545

●	F	Full
☾	L	Last
M.	W.	Monday
T.	T.	Tuesday
W.	W.	Wednesday
Th.	Th.	Thursday
F.	F.	Friday
S.	S.	Saturday
S.	S.	Sunday
M.	M.	Monday
T.	T.	Tuesday
W.	W.	Wednesday
Th.	Th.	Thursday
F.	F.	Friday
S.	S.	Saturday
S.	S.	Sunday
M.	M.	Monday
T.	T.	Tuesday
W.	W.	Wednesday
Th.	Th.	Thursday
F.	F.	Friday
S.	S.	Saturday
S.	S.	Sunday
M.	M.	Monday
T.	T.	Tuesday
W.	W.	Wednesday
Th.	Th.	Thursday
F.	F.	Friday
S.	S.	Saturday
S.	S.	Sunday

JANUARY hath XXXI Days.



MOON'S PHASES.

- Full Moon 6d 2h 32m A. ○ New Moon 20d 4h 40 m. A
- ☾ Last Qr. 1d 6h 14m A. ☽ First Quar. 23d 7h 11 m. A

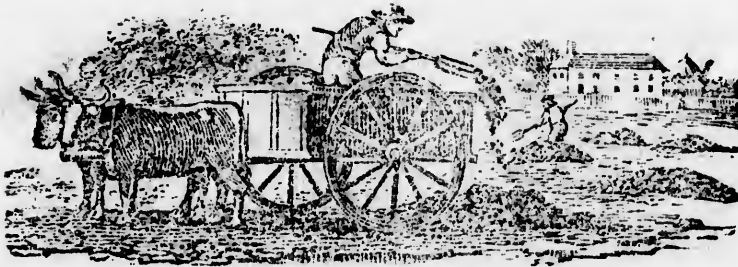
D.	W.	CALENDAR	Sun		Moon		High	
			rises	sets	Slow	Slow	R	S
1	T	Circumcis.	7 34	4 33	8 56	7 33	5	3 08
2	W	<i>Rather Coolish.</i>	7 34	4 34	4 24	8 24	1	3 24 09
3	T		7 34	4 35	4 52	9 20	2	12 5 18
4	F	♀ Stationary.	7 34	4 35	5 19	10 20	3	3 36 19
5	S	☽ Eclipsed.	7 34	4 36	5 46	11 22	4	1 17 04
6	S	Epiphany	7 34	4 37	6 13	Morn	Rise	7 30
6	M	♄ Stationary.	7 34	4 38	6 39	25	7	4 6 30
8	T		7 34	4 39	7 04	1 26	8	3 38 41
9	W	<i>High Tides.</i>	7 34	4 40	7 29	2 24	9	5 16 9 19
10	T	<i>Thick Mist.</i>	7 34	4 41	7 53	3 19	9	5 56 10 04
11	F		7 34	4 42	8 17	4 20	10	23 10 42
12	S	<i>Clear with Rain</i>	7 33	4 43	8 41	4 59	11	3 11 25
13	S	1st Sun aft Epiph	7 33	4 44	9 03	5 49	Morn	Morn
14	M	☽ ♃ ♄	7 33	4 45	9 25	6 33	1	6 1 33
15	T	♄ ♄ G. W. Elo.	7 33	4 46	9 47	7 20	2	2 2 35
16	W		7 32	4 48	10 03	8 7	3	11 3 46
17	T		7 31	4 49	10 28	8 55	4	7 4 53
18	F	<i>Hot ☽ ♄</i>	7 31	4 49	10 47	9 44	5	5 5 43
19	S	<i>and stormy.</i>	7 30	4 50	11 06	10 32	5	5 6 21
20	S	2d aft Ephany ☽ Ec	7 29	4 53	11 24	11 22	sets	7 30
21	M	☽ In Apogee.	7 28	4 54	11 41	Ev 8	4	5 3 00
22	T	☽ ☿	7 28	4 55	11 57	54	5	5 3 12
23	W	Pitt. d. 1806.	7 27	4 57	12 13	1 39	6	4 7 3 40
24	T	<i>Snow Drifts</i>	7 26	4 58	12 28	2 21	7	4 8 9 16
25	F	<i>Very much ☽ r *</i>	7 25	4 59	12 42	3 3	8	4 5 9 48
26	S	<i>Cool for the season</i>	7 25	5 00	12 55	3 46	9	4 2 10 18
27	S	3d Sun aft Epiphany	7 24	5 1 13	07	4 29	10	16 11 04
28	M	<i>Squalls</i>	7 23	5 3 13	19	5 15	10	5 6 11 33
29	F	Sexagesima.	7 22	5 4 13	29	6 1	11	27 Ev 33
30	W	<i>Low Tides</i>	7 21	5 5 13	39	6 55	Morn	1 55
31	T	☽ 1 ✕ Orion.	7 20	5 7 13	48	7 52	40	3 29

Jan.
Pro-
merica,
l and
y, the
ill be

Moon.
m.
5, A.
23, "
29, "
37, "
Moon.

22
on 6
6545

FEBRUARY hath XXVIII. Days.



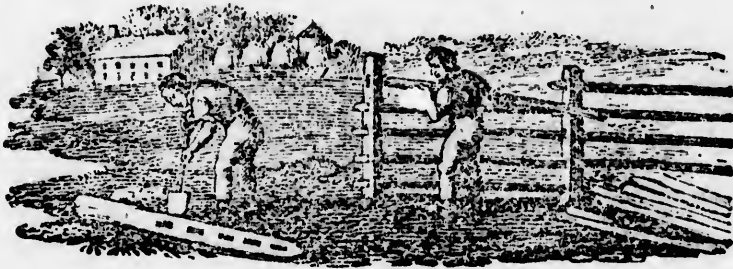
MOON'S PHASES.

- Full Moon 4h 1d9 1m A. ○ New Moon 19d 0h 7m A
 ☾ Last Quar 11h 8d 1m A ☽ First Quar 23d 7h 53m A

D.	M.	D. W.	CALENDAR.	Sun		Moon		M. on		High
				rise	sets	Shov	Set	R	S	
1			<i>Varuote</i>	7 15	5 8 13	56	8 51	1 30	4	49
2	S		B. V. Mary.	7 13	5 10	14	4	9 53	2 33	5 52
3	S		Septuagesimi Sunday	7 16	5 11	14	10	56	3 39	6 45
4	M		☽ In Peri tee.	7 15	5 13	14	16	11 31	Rises	7 06
5	F		<i>Snow Squall.</i>	7 14	5 14	14	21	Morn	7 1 3	
6	W			7 14	5 15	14	25	56	7 44	3 14
7	F		☿ ☽ ☉ <i>H^h tides.</i>	7 12	5 17	14	23	1 52	8 17	3 53
8	F			7 11	5 13	14	30	2 44	8 51	9 29
9	S		<i>Hail</i>	7 10	5 20	14	32	3 34	9 45	10 06
10	S		Sexagesima Sunday.	7 9	5 21	14	33	4 14	10 43	10 40
11	M			7 8	5 22	14	33	5 11	11 35	11 37
12	F		<i>Warmer.</i>	7 6	5 23	14	32	6 00	Morn	Mo 32
13	W		☽ s 2 h. 47 A.	7 5	5 25	14	01	6 49	2 1 1	49
14	F		C. Cook k. 79.	7 3	5 26	14	29	7 33	2 59	3 15
15	F			7 2	5 27	14	26	8 27	3 43	4 15
16	S		☽ In Apogee.	7 0	5 23	14	23	9 15	4 36	5 13
17	S		Quagesima ☽ ♀ ♃	6 59	5 29	14	18	10 3	5 20	6 02
18	M		♂ Sou. 6 h 4 m. A.	6 57	5 30	14	18	10 49	☽ sets	6 33
19	F		Shrove Tuesday.	6 56	5 32	14	8	11 36	4 44	7 11
20	W		Ash Wednesday.	6 55	5 33	14	2A	19 5	5 39	7 54
21	F		<i>Thunder Show.</i>	6 53	5 34	13	55	1 2	6 37	8 20
22	F			6 52	5 36	13	47	1 45	7 33	3 50
23	S		<i>Sap Runs.</i>	6 50	5 37	13	39	2 23	8 21	9 13
24	S		1st. Sunday in Lent.	6 49	5 39	13	30	3 12	8 50	9 57
25	M		<i>E. Cooler, with</i>	6 47	5 40	13	20	3 58	9 13	10 31
26	F		<i>Sunshine.</i>	6 46	5 41	13	10	4 43	9 52	11 03
27	W		Eq th . Lisbon, 96.	6 44	5 42	13	0	5 41	10 33	ev. 14
28	F		<i>Low Tides.</i>	6 43	5 42	12	43	6 37	11 16	5 37

D.	M.	D. W.
1	F	
2	S	
3	S	
4	M	
5	F	
6	W	
7	T	
8	F	
9	S	
10	S	
11	M	
12	T	
13	W	
14	F	
15	F	
16	S	
17	S	
18	M	
19	T	
20	W	
21	T	
22	F	
23	S	
24	S	
25	M	
26	T	
27	W	
28	T	
29	F	
30	S	
31	S	

MARCH hath XXXI Days.



MOON'S PHASES.

● Full Moon 5d 11h 33m A ○ New Moon 21d 5h 46m M
 ☾ Last Quar 13d 0h 34m M ☽ First Quar 23d 5h 31m M

High watr	D.	W.	CALENDAR.	Sun		Moon		High
				rises	sets	Slow	Soon	R S
1	P			6 39	5 40	12 37	7 38	3 15
4 49	2	A	<i>Squalls.</i>	6 39	5 40	12 24	8 31	Morn 4 37
5 52	3	S	2d Sunday in Lent	6 37	5 47	12 12	9 41	1 18 5 50
6 45	4	M	☽ in Perigee.	6 36	5 49	11 58	10 40	2 29 6 20
7 06	5	T		6 34	5 50	11 45	11 31	3 44 7 30
3 14	6	W	☽ qr. E. elong.	6 33	5 51	11 30	mo 37	4 35 7 53
3 53	7	T	<i>Hurricanes.</i>	6 31	5 52	11 16	31	☽ rise 8 0.
9 29	8	F	☽ soh. 34 <small>IN. A.</small>	6 30	5 54	11 1	1 2	6 49 8 39
10 06	9	S	<i>Slippery, with</i>	6 28	5 55	10 45	2 10	7 28 9 11
10 40	10	S	3d Sunday in Lent	6 26	5 56	10 30	3 0	8 36 9 51
11 37	11	M	<i>Skating.</i>	6 24	5 57	10 14	3 56	9 48 10 23
1 49	12	T	☽ in Perigee.	6 22	5 58	9 51	4 46	10 52 11 22
3 15	13	W	Disc. Her. '81.	6 20	5 59	9 41	5 37	11 40 Morn
4 15	14	T	☽ in ♀	6 19	6 4	9 24	6 24	1 45 1 20
5 13	15	F		6 17	6 2	9 7	7 15	2 36 2 25
6 02	16	S	5th Sunday <i>Foggy.</i>	6 15	6 3	8 50	8 4	3 21 3 41
6 33	17	S	☽ Apo 4th Sn in L	6 14	6 4	8 32	8 52	4 4 50
7 11	18	M		6 12	6 5	8 15	9 35	4 38 5 37
7 54	19	T	<i>Variable.</i>	6 10	6 6	7 57	10 2	5 0 6 11
8 20	20	W	w ☉ enters ♀	6 8	6 7	7 39	11 1	5 34 6 54
8 50	21	T	<i>Very high tides.</i>	6 7	6 9	7 21	11 5	☾ sets 7 26
9 13	22	F	Newton d. '27.	6 6	6 10	7 2	ev 2	6 28 3 14
9 57	23	S	<i>Showery.</i>	6 5	6 11	6 44	1 17	6 59 3 31
10 31	24	S	Palm Sunday	6 3	6 12	6 26	2 1	7 20 0 04
11 03	25	M	<i>Windy.</i>	6 1	6 13	6 7	2 51	3 1 0 33
5 37	26	T	☽ o. ♂	5 59	6 14	5 49	3 42	8 30 10 18
	27	W	<i>Dry.</i>	5 58	6 15	5 30	4 27	9 2 11 05
	28	T	☽ qr. E. elong.	5 57	6 16	5 12	5 27	10 10 11 05
	29	F	<i>Squalls.</i>	5 55	6 17	4 53	6 31	11 1 1 35
	30	S	<i>Squalls.</i>	5 53	6 18	4 35	7 36	11 3 11
	31	S		5 51	6 19	4 16	8 32	1 57 4 30

APRIL bath XXX Days.



MOON'S PHASES.

● Full Moon, 4d 9h 27m M. ○ New Moon 19d 8h 35m A
 ☾ Last Quar 11d 6h 4m A ☽ First Quar 27d 0h 20m M.

D.	M.	CALENDAR.	Sun		Moon		High		
			rises	sets	Slow	Slow	R	S	wa
1	M	☽ in P 11 6 ☉	5 43	6 21	3	58	9 2'	2 41	5 27
2	T		5 43	6 21	3	40	10 2'	4 36	13
3	W	Shower	5 46	6 24	3	21	11 17	5 24	7 6
4	T	High Tide	5 44	6 23	3	3 M.	31	☾ rise	7 44
5	F	Good Friday	5 42	6 24	2	46	9	6 20	8 00
6	S	Dirty Weather	5 40	6 25	2	28	1	7 29	8 18
7	S	Easter day	5 38	6 26	2	10	1 52	8 40	8 53
8	M	East Mon Very fair	5 37	6 27	1	53	2 44	9 48	9 28
9	T	Easter Tuesd Chilly	5 35	6 28	1	36	3 35	10 52	10 07
10	W		5 33	6 29	1	20	4 27	Morn	10 57
11	T	Canning bn '70	5 32	6 30	1	03	5 17	42	11 45
12	F	Raw Weather	5 30	6 31	0	47	6 7	1 23	M 39
13	S	in Apogee	5 29	6 33	0	31	6 54	2 21	1 54
14	S	Low Sunday	5 27	6 34	0	16	7 41	2 45	3 18
15	M		5 25	6 35	0	1	8 26	3 13	4 21
16	T	☽ inf 6 ☉	5 24	6 36	Fast	9	9 10	3 47	5 08
17	W	Low Tide	5 20	6 37		27	9 53	4 11	5 52
18	T	Cutting Wind	5 20	6 33		41	10 37	4 41	6 26
19	F		5 19	6 39		55	11 11	☾ sets	7 01
20	S	Squally	5 17	6 40	1	68	ev 7	5 46	7 31
21	S	2d Sunday aft East	5 16	6 42	1	21	56	6 28	8 14
22	M	White Frost	5 14	6 43	1	33	1 47	6 43	8 43
23	T	St. George	5 12	6 4	1	45	2 42	7 25	9 27
24	W	Clear	5 11	6 40	1	56	3 33	8 17	10 10
25	T	☽ sta. near 6 8	5 9	6 47	2	67	4 37	9 12	11 03
26	F	Cowper d 1 00	5 8	6 43	2	1	5 35	10 13	ev 07
27	S	Foul Weather	5 7	6 49	2	5	38	11 27	1 33
28	S	3d Sund aft Easter	5 5	6 50	2	37	7 23	☽ in	2 28
29	M	☽ sta. ☽ in Peri	5 3	6 51	2	4	3 22	2 45	3 49
30	T	Moon stands still	5 2	6 52	2	50	9 14	3 05	4 12

● F
 ☾ L
 W. D.
 1 W
 2 T
 3 F
 4 S
 5 S
 6 M
 7 T
 8 W
 9 T
 10 F
 11 S
 12 S
 13 M
 14 T
 15 W
 16 T
 17 F
 18 S
 19 S
 20 M
 21 F
 22 W
 23 F
 24 S
 25 S
 26 S
 27 M
 28 T
 29 W
 30 F
 31 F

MAY hath XXXI Days.



MOON'S PHASES.

☉ Full Moon 31 7h 33m A. ☽ New Moon 19d 8h 6m M
 ☾ Last Quar 11d 4h 31m A. ☽ First Quar 23d 5h 27m A

5m A
 20m M.
 High
 watr

5 27
 6 13
 7 6
 7 44
 8 00
 8 18
 8 53
 9 28
 10 07
 10 57
 11 45
 Mc 39
 1 54
 3 18
 4 21
 5 08
 5 52
 6 26
 7 01
 7 31
 8 14
 8 43
 9 27
 10 10
 11 03
 v 07
 1 33
 2 28
 3 49
 5 12

CALENDAR.		Sun	Sun	Moon	Moon	High
		rises	sets	East	Sou	Watr
1	W Addison, b 1672.	4 59	6 54	3 10	4 44	6 03
2	F	4 59	6 54	3 10	4 44	6 03
3	F ♀ in Aphelion	4 53	6 55	3 17	4 45	6 07
4	S E. Go a Maying	4 57	6 57	3 24	4 46	6 10
5	S 4th Sund aft East	4 56	6 53	3 29	4 48	6 13
6	M Pleasant Mists	4 55	6 59	3 35	4 49	6 16
7	T About this time	4 54	7 03	3 39	4 50	6 19
8	W Thund. Showers	4 53	7 13	3 43	4 51	6 22
9	T	4 51	7 23	3 47	4 52	6 25
10	F Clear	4 50	7 33	3 50	4 53	6 28
11	S ☽ in Apogee	4 49	7 43	3 52	4 54	6 31
12	S Rogation Sunday	4 43	7 53	3 54	4 57	6 34
13	M ♀ gr w elou	4 47	7 63	3 55	4 57	6 37
14	T Very Ho	4 46	7 73	3 56	4 58	6 40
15	W Low Tides	4 45	7 83	3 56	4 59	6 43
16	F Ascension day	4 44	7 93	3 55	4 59	6 46
17	F	4 43	7 103	3 54	4 59	6 49
18	S Clear	4 42	7 113	3 52	4 59	6 52
19	S Sun after Ascension	4 41	7 113	3 50	4 59	6 55
20	M Very Dusty	4 40	7 123	3 47	4 59	6 58
21	F Slight Snow	4 39	7 133	3 43	4 59	7 01
22	W Cooler	4 38	7 143	3 39	4 59	7 04
23	F h Stationary	4 37	7 153	3 35	4 59	7 07
24	F ☽ in Perigee	4 36	7 163	3 30	4 59	7 10
25	S White Squall	4 36	7 173	3 24	4 59	7 13
26	S Whit Sunday	4 35	7 183	3 18	4 59	7 16
27	M W Mond Hurricane	4 34	7 193	3 12	4 59	7 19
28	T Whit Tu High Tides	4 34	7 203	3 07	4 59	7 22
29	W ♀ in ♀	4 33	7 212	3 03	4 59	7 25
30	T Warm	4 32	7 222	3 00	4 59	7 28
31	F Wind.	4 31	7 232	2 54	4 59	7 31

JUNE hath XXX Days.



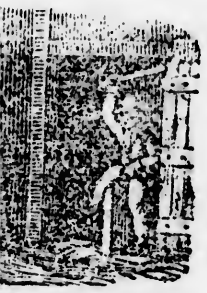
MOON'S PHASES.

● Full Moon 2d 6h 59m M ○ New Moon 17d 7h 57m A
 ☾ Last Quar 10d 7h 8m M ☽ First Quar 24d 10h 15m M

D.	W.	CALENDAR.	Sun		Moon		High	
			rises	sets	Fast	Sou		R
1	S		4 30	7 23 2	23 11	17 4	13 7	06
2	S	Trinity Sunday	4 30	7 25 2	24	Mo 9	☾ rses	8
3	M	Cool Mornings	4 29	7 26 2	15 1	3 3	20 8	13
4	F	for meditation	4 29	7 27 2	5 1	53 9	19 8	52
5	W	Boniface	4 29	7 28 1	55 2	42 10	7 9	27
6	F	Cloudy	4 28	7 29 1	45 3	39 10	51 10	05
7	F	☽ stationary	4 28	7 29 1	34 4	17 11	23 10	49
8	S		4 28	7 30 1	23 5	1	Mo 5 11	27
9	S	1st Sund aft Trin	4 28	7 30 1	11 5	43	31	Mo 15
10	M	Showery	4 28	7 31 1	0 6	25	53 1	25
11	F	St. Barnabas	4 28	7 31 0	43 7	8 1	26 2	08
12	W	With Hail	4 28	7 31 0	36 7	52 1	56 3	29
13	T	Storms	4 28	7 32 0	23 8	37 2	51 4	25
14	F		4 28	7 32 0	11 9	26 3	59 5	24
15	S	Very Hot	4 28	7 33 0	Slow	10 19	5 7	13
16	S	2d Sund aft Trin	4 28	7 33 0	1 11	16 6	20 7	05
17	M	☽ Sup 6 ☽	4 28	7 33 0	14	Even	☾ s ts	7 30
18	F		4 28	7 34 0	27	16 4	51 3	
19	W	Stormy Evenings	4 28	7 34 0	40 1	17 5	52 8	32
20	F	☽ in Perigee	4 28	7 34 0	53 2	16 6	31 9	17
21	F	☽ ent ☽	4 28	7 34 1	6 3	15 7	11 10	00
22	S	3d Sund aft Trin	4 28	7 34 1	19 4	10 8	22 10	42
23	S	Good Weather	4 29	7 35 1	32 5	2 9	41 11	23
24	M	Squally	4 29	7 35 1	45 5	52 11	30 12	24
25	F	Dry	4 29	7 35 1	53 6	49	Mo 33 1	40
26	W	and dusty	4 30	7 35 2	11 7	23 1	33 03	
27	F		4 30	7 35 2	23 8	17 1	33 4	07
28	F	Wm. IV. d. king	4 31	7 35 2	36 9	7 2	7 5	05
29	S	☽ II St. Peter.	4 31	7 35 2	48 9	57 2	45 5	56
30	S	4th Sund aft Trin	4 31	7 36 3	00 10	48 4	37 6	37

● Fu
 ☾ La
 1 M
 2 T
 3 W
 4 T
 5 F
 6 S
 7 S
 8 M
 9 T
 10 W
 11 T
 12 F
 13 S
 14 S
 15 M
 16 T
 17 W
 18 T
 19 F
 20 S
 21 S
 22 M
 23 F
 24 W
 25 T
 26 F
 27 S
 28 S
 29 M
 30 T
 31 W

JULY bath XXXI Days.



on 17d 7h 57m ▲
r 24d 10h 15m M

- Full Moon 1d 7h 20m ▲ ○ New Moon 6d 13h 57▲
- ☾ Last Quar 9d 10h 51m ▲ ☽ First Quar 23d 4h 21m ▲
- Full Moon, 31d 9h 49m M

Hour	R	S	High
17	4	13	7 06
18	9	18	8 13
19	3	20	8 13
20	5	18	8 52
21	10	7	9 27
22	10	51	10 05
23	11	23	10 49
24	1	5	11 27
25	3	31	15 25
26	1	53	1 25
27	8	26	2 08
28	1	56	3 29
29	7	51	4 25
30	3	59	5 24
31	5	7	6 19
1	6	20	7 05
2	1	18	7 30
3	4	51	8 32
4	7	52	8 32
5	6	31	9 17
6	7	11	10 00
7	8	22	10 42
8	9	41	11 23
9	11	30	12 24
10	1	33	1 40
11	1	33	3 03
12	1	33	4 07
13	2	7	5 05
14	2	45	5 56
15	4	27	6 37

D.	W.	M.	CALENDAR.	Sun rises	Sun sets	Moon Slow	Moon Sou	Moon R	Moon S	High
1	M	☽	Eclipsed	4 32	7 34	3	24	11	31	☾ rse 7 04
2	T	♀	In Aphelion	4 33	7 34	3	35	40	7	5 7 39
3	W		High Tides	4 33	7 34	3	46	28	7	54 8 19
4	T			4 33	7 34	3	57	1	18	8 35 8 28
5	F		Algiers t. 1830	4 34	7 34	4	7	2	6	9 14 9 07
6	S	☽	In Apogee	4 35	7 34	4	18	2	50	9 46 9 35
7	S		Sultry with	4 36	7 34	4	28	3	33	10 13 10 05
8	M		Chain Lightning	4 36	7 33	4	37	4	15	10 40 10 47
9	T		and showers	4 37	7 33	4	46	4	57	11 4 11 23
10	W			4 38	7 33	4	55	5	40	11 47 12 12
11	T		Low Tides	4 38	7 32	5	6	24	49	1 29
12	F		Grows Pleas	4 39	7 32	5	11	7	10	1 50 2 10
13	S		Very Hot	4 39	7 31	5	19	8	0	3 37
14	S		Cap Bas 1789	4 40	7 30	5	26	8	54	4 6 4 59
15	M		St. Swithin	4 41	7 30	5	32	9	53	5 14 5 52
16	T	☽	eclipsed	4 42	7 29	5	39	10	52	☾ sets 6 41
17	W		and dusty	4 43	7 29	5	44	11	54	4 33 7 55
18	T	☽	In Perigee	4 44	7 28	5	49	1	56	5 44 8 14
19	F	♁	in ♀	4 44	7 27	5	54	1	55	6 59 9 1
20	S		High Tides	4 45	7 27	5	58	2	51	8 11 9 36
21	S		Cooler	4 46	7 26	6	1	3	44	9 26 10 16
22	M		Magdalen	4 47	7 25	9	4	4	33	10 29 10 50
23	F		Dog days begin	4 48	7 24	6	6	5	22	11 11 48
24	W		with storms	4 49	7 23	6	8	6	11	11 34 Af 33
25	T			4 50	7 22	6	9	7	01	Morn 2 01
26	F	♄	elong	4 51	7 21	6	9	7	51	43 3 39
27	S		Worth berries	4 52	7 20	6	9	8	41	1 20 4 39
28	S	♁	in Aphelion	4 53	7 19	6	8	9	32	2 7 5 31
29	M		Penn di 1718	4 54	7 18	6	7	10	23	2 58 6 12
30	T		and Milk about	4 55	7 17	6	5	11	12	3 51 7 01
31	W		this time	4 56	7 16	6	2	11	31	☾ rse 7 40

AUGUST hath XXXI Days.



MOON'S PHASES:

☾ Last Quar. 1d 0h 43m ▲ ☽ First Quar. 22d 1h.16m M
 ● New Moon 15d 9h 22m M ○ Full Moon 29d 1h 42m ▲

M.	W.	CALENDAR.	Sun	Sun	Moon	Moon	High
D	D		rises	sets	Slow	Sou	R S watr
1	T	Lammas Day	4 58 7 14	5 59	Morn	7 22 3	0
2	F	☽ in Apogee	4 58 7 14	5 55		46 7 46 8	10
3	S	Arkwright d 92	4 59 7 13	5 51	1 20	8 18 8	31
4	S	9th Sund aft Trinity	5 0 7 12	5 46	2 12	8 41 9	13
5	M	<i>Delightful weather</i>	5 1 7 11	5 40	2 53	9 22 9	38
6	T	<i>Cooler, with</i>	5 2 7 10	5 34	3 35	9 39 10	07
7	W	<i>smoke</i>	5 3 7 9	5 27	4 18	10 36 10	50
8	T	♀ stationary	5 4 7 7	5 20	5 2	11 39 11	28
9	F	<i>Hail</i>	5 5 7 6	5 12	5 50		42 Morn
10	S	St Lawrence	5 6 7 5	5 04	6 41	1 45 1	41
11	S	10th Sund aft Trinity	5 7 7 4	5 57	7 36	2 53 3	13
12	M	Louis VI deth '92	5 8 7 3	4 45	3 35	4 4	33
13	T	♁ ♀ ○	5 9 7 1	4 35	9 37	5 2 5	36
14	W	<i>Whirlwinds</i>	5 10 7 0	4 24	10 39	5 56 6	28
15	T	☽ in Perigee	5 11 6 58	4 18	11 31	☾sets 7 30	
16	F		5 12 6 57	4 2	Ev 39	5 51 8	21
17	S	<i>Storms and</i>	5 13 6 55	3 49	1 34	7 9 8	38
18	S	11th Sund aft Trinity	5 14 6 54	3 37	2 28	8 24 9	18
19	M	<i>High Tides</i>	5 15 6 52	3 28	3 19	9 5 9	54
20	T	<i>Biting Frosts</i>	5 16 6 50	3 10	4 10	9 37 10	42
21	W	Wm IV b '65	5 17 6 49	2 55	5 00	10 5 11	26
22	T	<i>Sticky weather</i>	5 19 6 48	2 41	5 51	10 41	23
23	F	<i>Rain</i>	5 20 6 46	2 26	6 42	11 25 1	42
24		St Bart	5 21 6 44	2 10	7 33		8 3 10
25	M	12th Sund aft Trinity	5 22 6 42	1 54	8 24	1 4 19	
26	M	<i>Low Tides</i>	5 23 6 41	0 37	9 13	1 52 5	11
27	T	<i>Thunder Showers</i>	5 24 6 39	1 21	10 2	2 45 6	01
28	W	G Moreau k 1813	5 25 6 37	1 03	10 48	3 44 7	37
29	T	☽ in Apogee	5 26 6 36		46 11 31	☽rise 3	
30	F	<i>Hot and Sutory</i>	5 38 6 35		28 11 2	6 35 8	2
31	S	<i>Muggy Weather</i>	5 29 6 33		9 11 18	7 55 8	33

☾ Last
 ○ New

W. M.
 D. D.

1 S 13
 2 M
 3 T Cr
 4 W
 5 T
 6 F ♀
 7 S ♀
 8 S 14
 9 M
 10 T Lo
 11 W ♀
 12 T
 13 F
 14 S Mc
 15 S 15t
 16 M
 17 F D
 18 W
 19 T
 20 F
 21 S
 22 S 16t
 23 M
 24 T
 25 W
 26 T
 27 F D
 28 S
 29 S 17t
 30 M

SEPTEMBER hath XXX Days.



MOON'S PHASES.

☾ Last Quar 7d 0h 42m M ☽ First Quar 20d 2h 21m A
 ○ New Moon 13d 5h 4m A ● Full Moon, 28d 6h 18m A

1h.16m M
 2m A
 Moon High
 S watr
 22 9 0
 46 8 10
 18 8 31
 41 9 13
 22 9 38
 39 10 07
 36 10 50
 39 11 28
 42 Morn
 45 1 41
 53 3 13
 4 33
 2 5 36
 56 6 28
 sets 7 30
 51 8 21
 9 8 38
 24 9 18
 5 9 54
 37 10 42
 5 11 26
 41 23
 25 1 42
 8 3 10
 4 19
 52 5 11
 45 6 01
 44 7 37
 rise 8
 35 8 2
 55 8 33

W. D.	M. D.	CALENDAR	Sun rises	Sun sets	Sun Fast	Moon Sou	Moon R	High S	High watr
1	S	13th Sund aft Trinity	5 31	6 32	8	0 58	7 16	8	16
2	M	♂ ♀ Hot	5 31	6 30	27	1 40	7 44	8	41
3	T	Crom d 1653	5 31	6 29	46	2 23	8 37	9	13
4	W	A Dry Fog	5 33	6 26	1	6 3 8	9 37	9	53
5	T	Very Sultry	5 34	6 25	1	25 3 51	10 35	10	28
6	F	♀ in ☉	5 35	6 23	1	45 4 41	11 45	10	07
7	S		5 36	6 21	2	5 5 31	48		03
8	S	14th Sund aft Trinity	5 37	6 20	2	26 6 27	1 52	1	22
9	M	Damp	5 38	6 18	2	46 7 28	2 53	3	23
10	T	Low tides	5 39	6 16	3	7 8 28	3 49	4	23
11	W	♀ in Perihel	5 40	6 14	3	27 9 59	4 41	5	27
12	T	Stormy	5 41	6 12	3	28 10 28	5 24	6	23
13	F		5 42	6 11	4	9 11 27	☾ sets	7	16
14	S	Moscow bt 1812	5 43	6 9	4	30 ev 10	5 33	8	00
15	S	15th Sund aft Trinity	5 44	6 7	4	51 1 14	7 12	8	35
16	M	High Tides	5 45	6 5	5	12 2 7	7 45	9	08
17	F	♂ ♀	5 46	6 4	5	53 2 57	8 13	9	42
18	W	Windy with dust	5 47	6 2	5	54 3 51	8 51	10	23
19	T		5 48	6 0	6	15 4 44	9 17	11	10
20	F	Clear Mornings	5 49	5 59	6	36 5 37	10 20	ev	09
21	S		5 50	5 57	6	57 6 29	11 4	1	34
22	S	16th Sund aft Trinity	5 51	5 55	7	17 7 19	11 54	2	24
23	M	Low Tides	5 52	5 53	7	38 8 9	51	3	45
24	T	Pleasant	5 53	5 51	7	59 8 55	1 47	4	50
25	W	Dog Days and	5 54	5 49	8	19 9 41	2 45	5	36
26	T	in Apogee	5 55	5 47	8	40 10 24	3 44	6	19
27	F	☽ Cloudy Aftersnoon	5 56	5 45	9	0 11 6	4 41	6	55
28	S	about this time	5 58	5 44	9	20 11 31	☾ rse	7	37
29	S	17th Sund aft Trinity	5 59	5 42	9	40 11 48	5 55	7	47
30	M	Very Pleas	6 0	5 40	9	50 Mo 30	6 14	8	5

OCTOBER hath XXXI Days.



MOON'S PHASES.

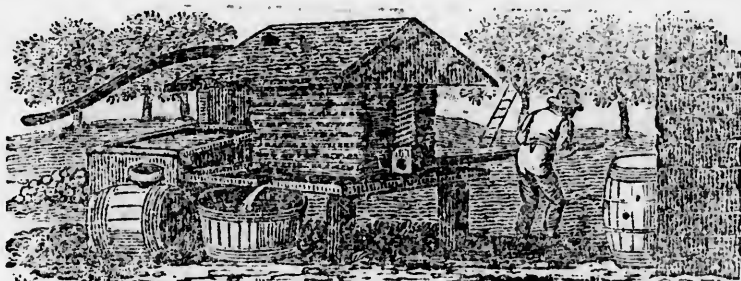
☾ Last Qr. 6d 10h 56m m ☽ First Quar. 20d 6h 51 m. m
 ○ New Moon 13^o 1h 54 m m ● Full Moon 6d 10h 35m m

P. M.	D. W.	CALENDAR	Sun		Sun	Mo	Mo	High
			rises	sets	Fast	Sou	R	S
1	T		6 2	5 28	10 19	1 14	7 32	8 24
2	W	<i>Warm</i>	6 2	5 37	10 38	1 59	8 39	9 00
3	T	Bat Jena 1806	6 3	5 35	10 56	2 47	9 47	9 32
4	F	♀ sup ♂ ○	6 4	5 34	11 14	3 37	10 49	10 09
5	S	☽ H II	6 5	5 32	11 32	4 30	11 51	10 56
6	S	18th Sund aft Trinity	6 6	5 31	11 50	5 26		56 01
7	M	<i>Squirrels</i>	6 7	5 29	12 7	6 25	1 50	1 20
8	T	<i>Gales</i>	6 8	5 28	12 24	7 24	2 44	2 39
9	W	<i>Low Tides</i>	6 9	5 26	12 40	8 21	3 25	3 58
10			6 10	5 24	12 56	9 18	4 65	16
11		☽ in Perigee	6 11	5 22	13 11	10 13	4 38	6 12
12		<i>Warm Rain</i>	6 12	5 20	13 26	11 4	5 11	6 52
13	M	19th Sund aft Trinity	6 13	5 18	13 40	11 59	Sets. 7	24
14	W	Penn, b 1644	6 14	5 16	13 54	Ev 53	6 20	8 11
15		☽ ♀ and ♂ in Ω	6 15	5 15	14 7	1 46	6 54	8 47
16	W	<i>High tides</i>	6 16	5 13	14 20	2 40	7 32	9 25
17	T		6 18	5 12	14 32	3 34	8 13	10 06
18	F	St Luke	6 19	5 11	14 48	4 18	9 3	11 00
19	S	<i>Cooler</i>	6 21	5 10	14 54	5 20	9 50	11 46
20	S	20th Sund aft Trinity	6 22	5 8	15 5	6 10	10 50	42
21	M	Bat Trafalgar, 05	6 23	5 6	15 14	6 58	11 46	1 56
22	T	♀ In Perihel	6 25	5 5	15 24	7 44	44	3 21
23	W	☽ in Apogee	6 26	5 3	15 32	8 28	1 44	4 33
24	F	♂ ♂ ○	6 27	5 2	15 40	9 10	2 41	5 08
25	F		6 28	5 0	15 47	9 52	3 38	6 01
26	S	21st Sund aft Trinity	6 29	4 58	15 53	10 34	4 30	6 23
27	S	☽ Stationary	6 30	4 57	15 59	11 17	4 59	6 52
28	M	<i>Pleasant</i>	6 32	4 56	16 3	11 31	Rises 7	30
29	T	<i>With cool</i>	6 33	4 54	16 7	Me 3	6 40	8
30	W	<i>Evenings</i>	6 35	4 53	16 11	39	7 41	9 20
31	T		6 36	4 52	16 13	1 39	8 47	10 21

☾ Last
 ○ New

M.	D.	W.
1	F	♂
2	S	A
3	S	22
4	M	
5	T	P
6	W	
7	T	
8	F	D
9	S	
10	S	23
11	M	
12	T	
13	W	
14	T	
15	F	Lo
16	S	J
17	S	24
18	M	
19	T	♂
20	W	D
21	T	♂
22	F	
23	S	St
24	S	25
25	M	
26	F	
27	W	
28	T	
29	F	♂
30	S	D

NOVEMBER bath XXX Days.



MOON'S PHASES.

☾ Last Quar 4d 7h 37m M ☽ First Quar 19d 2h 50m M
 ○ New Moon 11d 0h 41m A ● Full Moon 27d 2h 7m M

M.	D.	CALENDAR.	Sun		Sun	Moon	Moon	High	
			rises	sets	Fast	Sou	R	S	watr
1	F	♂ ♀ ○ & ♀ H II	6 39	4 48	16 16	2 31	9	9	16
2	S	All Souls	6 39	4 49	16 16	3 26	10 56	10	01
3	S	22d Sund aft Trinity	6 40	4 48	16 16	4 24	10 54	10	51
4	M	Good Sleighing	6 41	4 46	16 15	5 20	Mo 41	11	52
5	T	Powder Plot 1605	6 43	4 45	16 14	6 16	1 28	Mo 48	
6	W		6 44	4 43	16 11	7 12	2 8	2	17
7	T	Violent Slippery	6 45	4 42	16 8	8 5	2 42	3	42
8	F	♂ in Perigee	6 47	4 41	16 4	8 57	3 11	4	55
9	S		6 48	4 40	15 59	9 49	3 53	5	48
10	S	23d Sund aft Trinity	6 49	4 39	15 53	10 50	5 12	6	39
11	M	Weath St Mart	6 51	4 38	15 46	11 33	☾ sets	7	32
12	T	Good Night's	6 52	4 37	15 39	Ev 26	5 22	8	1
13	W	to sleep sound	6 53	4 36	15 30	1 21	6 4	8	25
14	T	High Tides	6 55	4 35	15 21	2 15	6 50	9	16
15	F	Lord Chat d '80	6 56	4 34	15 11	3 7	7 37	9	52
16	S	J Fergu d '76	6 57	4 33	15 0	4 2	8 37	10	34
17	S	24th Sund aft Trinity	6 58	4 32	14 48	4 51	9 34	11	17
18	M		6 59	4 31	14 36	5 38	10 30	Ev 10	
19	T	♀ Gr E elo	7 0	4 30	14 22	6 22	11 30		56
20	W	♂ in Apogee	7 2	4 30	14 8	7 04	Ev 27	2	04
21	T	♂ in ♀	7 3	4 29	13 55	7 46	1 28	3	23
22	F	Low tides	7 4	4 28	13 38	8 27	2 23	4	22
23	S	St Clement	7 5	4 27	13 21	9 10	2 59	5	08
24	S	25th Sund aft Trinity	7 7	4 26	13 4	9 51	3 23	5	48
25	M	Smokey for a	7 8	4 26	12 46	10 39	3 55	6	21
26	F	few days	7 9	4 25	12 27	11 38	4 23	7	17
27	W		7 10	4 25	12 7	11 31	☾ rises	7	35
28	T	High tides	7 11	4 24	11 47	Mo 10	7 45	8	19
29	F	♀ Stationary	7 13	4 24	11 26	1 16	8 26	8	33
30	S	♂ ♀ II St An	7 14	4 24	11 5	2 13	9 39	9	14

DECEMBER bath XXXI Days.



MOON'S PHASES.

☾ Last Quar 4h 5d 17m M ☽ First Quar 19d 0h 17m M
 ○ New Moon 11d 1h 57m M ● Full Moon 26d 4h 17m M

No.	D.	CALENDAR.	Suu		Sun	Moon		Moon		High
			rises	sets	Fast	Sou	R	S	watr	
1	S	Advent Sunday	7 16	4 22	10 42	2 11	10 36	9	56	
2	M	Buo Cr 1804	7 16	4 22	10 19	4 7	11 11	10	39	
3	T		7 17	4 23	9 56	5 2	11 42	11	28	
4	W	☽ in Perigee	7 18	4 23	9 32	5 55		17	27	
5	T	<i>Sincerely cold</i>	7 19	4 23	9 7	6 46		50	1	
6	F	<i>Great Squall</i>	7 20	4 23	8 41	7 36	1 40	3	13	
7	S		7 21	4 23	8 15	8 25	2 43	4	20	
8	S	2d Sunday in advnt	7 22	4 22	7 49	9 15	3 52	5	14	
9	M	♀ Inf 6 ○	7 23	4 22	7 22	10 6	5 02	6	05	
10	T	<i>High snow</i>	7 24	5 22	6 55	10 59	6 7	6	48	
11	W	<i>Drifts</i>	7 24	4 22	6 27	11 53	☽ sts	7	40	
12	T	Gay d 1782	7 25	4 23	5 59	Ev 47	5 17	8	16	
13	F	<i>Very Airy</i>	7 26	4 23	5 30	1 40	6 10	8	31	
14	S	Washing d '99	7 27	4 23	3 2	2 31	7 6	9	16	
15	S	3d Sund in Advent	7 27	4 23	4 33	3 20	8 24	10	05	
16	M		7 28	4 24	4 3	4 5	9 5	10	37	
17	T		7 29	4 24	3 34	4 38	10 4	11	14	
18	W	☽ in Apogee	7 30	4 24	3 4	5 30	11 1	11	49	
19	T	w. ♀ Stat n ☿	7 30	4 24	2 34	6 11		0	43	
20	F		7 31	4 25	2 4	6 51		47	1	
21	S	♃ stat near ○ ♃	7 32	4 26	1 34	7 34	1 12	3	11	
22	S	4th Sund in Advent	7 32	4 26	1 5	8 18	1 38	4	13	
23	M	<i>Fine nights</i>	7 33	4 27	35	9 5	2 9	5	06	
24	T	<i>for courting</i>	7 34	4 28	Slow	8 55	2 45	5	54	
25	W	Christmas Day	7 34	4 29	34	10 51	3 30	6	40	
26	T	☽ eclipsed	7 34	4 29	54	11 51	Rises	7	20	
27	F	<i>Very warm</i>	7 34	4 30	1 24	Mo 49	7 19	7	48	
28	S	<i>for the season</i>	7 35	4 31	1 53	48	8 9	8	30	
29	S	♀ gr w elong	7 35	4 31	2 22	1 47	8 55	8	48	
30	M		7 35	4 31	2 52	2 44	9 32	8	20	
31	T	○ in Perigee	7 35	4 32	3 20	3 48	10 17	10	21	

M
 8th R
 White
 Egypt
 ique, N
 Colo
 Henry
 Lt. Co
 HonGC
 Major
 T. Ger.
 John S
 Capt:
 J. Fitzg
 D. V. M
 Simcoe
 J. H. Ma
 J. Hart
 Alex. D
 Chas. S.
 Chas. Co
 H. W H
 Thos. K
 Lieuts
 Abr. Bo
 T. Thor
 Wm. Ca
 D. Gard
 James B
 Wm. Sen
 John Lo
 Hud. Cla
 J. Moles
 Wm. R
 W Chea
 Jno. S. V
 Thos. E
 Rlph Ch
 Ensign
 Edw. O
 H. W. H
 Walter
 Walter
 Henry L
 E. H Gr

Military and Militia Force in Nova Scotia.

	8th REGT.	J Terry Liston	John Lee	John Fry
	White Horse	Paymr. H Hill	P W Taylor	J S Cameron
	Egypt Marti-	Q. M. S. Brod-	W PriceLewes	Wm Sullivan
	ique, Niagara.	ribb	Adj J. Telford	J A Henderson
	Colonel,	Sur. J. H Car-	Q. M. J Mur-	1st Lieuts.
	Henry Bayly	diffe M. D.	chison	A McLachlan
	Lt. Colonel	Facings Blue.	Surjt. J Shore-	W SR Norcott
	HonGCathcart	96th REGT.	land	J R Groyes
	Majors.	Colonel.	Ast. S A Mur-	Robt Walpole
	T. Ger. Ball	Sir Liol. Smith	ray	Ho Shirley
	John S Powell	Lt. Colonel	Mich. Nugent	Chas F Napier
	Captains	Jas. Fullarton	Facings yellow	W SFollemach
	J. Fitzgerald	Majors	Rifle Brigade	Roynin Jones
	D. V. Machen	H. White.	Copenhagen.	John Rooper
	Simcoe Baynes	A. Cairncross	Monte Video	R S Smith
	J. H. Maitland	Captains	Roleia Vimirea	E Holt Glegg
	J. Hart Davies	Wm. Hulme	Corrunna Busa	2d Lieuts
	Alex. Dirom	Rich. Gethon	co, Berroso.	RHFitzherbert
	Chas. S. Malet	E. East Hill	Fuentes d'onor	R W D Flam-
	Chas. Corkran	C Cumberland	Ciudad d'onor	stead
	H. W Hartley	John Auldjo	dirego Badajo,	R W Wilbraham
	Thos. Kenyon	T. M. Wilson	Salamanca Vit-	Alex Munro
	Lieuts.	Robt. Bush	torria, Nivelle.	K W Young
	Abr. Bourke	Jas. Stewart	Nine. Orthes,	R Petley
	T. Thompson	Lieuts.	Toulouse Pe-	A Stewart
	Wm. Calder	L. T. Jones	ninsula Water-	G K Kerr
	D. Gardiner	Wm Kidman	loo.	G P Malcolm
	James Byron	E. Sutherland	Colonel in chief	WHFrankland
	Wm. Seahouse	A. Robertson	Arthur Duke of	Paymr W Hol-
	John Longfield	A Mac Kenzie	Wellington	den
	Hud. Clarke	Jos. Telford.	Colonel Commr	Q. M. W Hill
	J. Molesworth	Thos Abbott	Sir AFBurrard	Sur. T H Ridg-
	Wm. R Lucas	P. F de Meurin	Lt Colonel	way
	W Chearnley	J W A Wray	W Eeles	Ast. Sur. E G
	Jno. S. Whitty	Heury Nixon	majors	Lloyd
	Thos. Egan	R McKenzie	A Stewart	Regimentals
	Rlph Cheeney	Jas. Clyde	J C Hope	green,
	Ensigns	R H Burnely	Captains	black facing
	Edw. Orme	Ensigns	Tho E Kelly	Royal Engineers
	H. W. Roper	R S Murray	W Warren	Lt Col Boteler
	Walter Lay	Edw. Barclay	G Simmons	Capt. Marshall
	Walter Ogilvy	E Hathaway	H Stewart	Lieuts
	Henry Lomax	G Anderson	Jas Maister	M Kenzie
	E. H Greathed	M R Campbell	J StV Saumaser	SH Wentworth

7m M
m MHigh
watr

9 56

10 39

11 28

27

1 46

3 13

4 20

5 14

6 05

6 48

7 40

8 16

8 31

9 16

10 05

10 37

11 14

11 49

43

71 51

23 11

34 13

95 06

55 54

06 40

7 20

97 48

98 30

58 48

28 20

710 21

W H Ford	W G Fife	<i>5d Halifax Rg.</i>	J Moren
<i>Royal Artillery</i>	A Sinclair	<i>ment</i>	Jno Gammon
Captains	W G Anderson	Lieut Col.	Martin Niforth
S Kirby	A McKinlay	Jno L Starr	J T Bishop
H Stanway	A Uniacke	Majors	J E Miller
Lieuts	S T Smith	J E Fairbanks	How. Blades
B O Lyster	J Slayter, Capt	H A Gladwin	Hen Gorham
F A Griffiths	2 M. GT Fillis	Edw Cunard	Chas Brereton
Robt Robinson	Surg A Wallace	Captains	Wm Murr
R Pigot	Asst. Sur. W.	H Y Mott	Rich G White
T G Morlay	Gregor.	S W Albro	Aj E G Green-
Dr Parker Ord-		A Taylor	wood, capt.
nance Surgeon	<i>2d Halifax Re-</i>	B Ogilvie	Pm E Duckett
	<i>giment</i>	Ths R Grassie	Q M C H Bel-
<i>1st Halifax regt</i>		A Dunbrack	cher
<i>of Militia.</i>	Hon S Cunard	Edw H Low	Sg S Head MD
	Majors	Jas Allen	As R L Gray
Lieut. Col	Chas J Hill	J Chamberlain	
G N Russell	W M Deblois	E G W Green-	<i>Officers 4th Ha-</i>
Major	captains	wood, adj	<i>lifax Regiment</i>
A Richardson	J A Barry, adj	Daniel Starr	Lieut Col Jn
J McNab	G B Creighton	Jon Watson,	Albro.
J Slayter, Adj.	A G Fraser	W J Starr	Majors Wm A
Captains	M Tobin, jr.	G R Grassie	Black
W Pryor	Thos Tobin	John Harvie	Edward Pryor
J Black	John H Clarke	W Hall	Captains.
J G Boggs	John E Starr	G Glawson	F Dauphiny
T Lydiard	John E Starr	C Marks	John Parker
C Dewolf	Henry Pryor	S Breedin	John M. Allen
T Adams	H Mignowitz	Wm Albro	Thomas Pyke
L O C Doyle	Edw Cunard jr	R D Clarke	James Hearn
S Binney	1st Lieuts.	1st Lieuts	Peter Power.
A Fleiger	Jas A Moody	John Leslie	W Donaldson
1st Lieuts.	Geo H Starr	W Anderson	Azor Stevens
A B Richardson	Thos A Baur	J Brown	Henry Yeoman's
F Stevens	Thos Bartlett	A Kent	Archibld Scott
R Romans	Joseph Sentell	R A Logan	Adjt.
S Lydiard	Edw Scaife	G VanBuskirk	Jno Dauphiny
T Kinnear,	Frs Le Cain	2d Lieuts	Edwrd Allison
E Dewolf	C W B Wilkie	T Kennedy	1st Lieuts.
W Emmerson	Geo Deblois	W Guild	Napean Clarke
Ed Binney	Jno A Bauer	John Linsie	P J Holland
J Romans	Q m Jn Dupuy	Alex Taylor jr	W B Hamilton
E Lawson	Qm s CKeeffer	E Duckett, jr	B E Black
2d Lieuts	Bilby, Sjt Maj	T Kenney	Chas Gray
T Jeffery	Sr W B Almon	H Leslie	Arch Mc Donld
S Campbell	Paym	J H DeWolf	B C Brehin

Angus
John
H J C
Th Vi
2d L
John M
John B
P Purs
Ed Ry
Jas Sa
Chs Ha
Geo. L
George
Chs Cl
Chs La
Wm J
Edward
George
Jas Rich
Chas G
Adjutan
Archibld
Capt
Qr M T
termar
Sur J St
Asst W

Colchest-
gimen
1st B
Lt Col J
Major
Alex Ar
Jas D B
Capt
Jas Phil
Jos Fult
John Ga
Jas Yuil
W Eato
Geo Co
Wm Bla
1st Lie
Wm Phi
Jas Ruth
S Archib

Angus Fraser	Wm Logan	Jno Mc Grath	Abm Patterson
John Adams	Jas Donlap	Wm Vance	Anthony Smith
H J Creighton	Andw Yuill	Jac March	Geo Campbell
Th Vickers	F Parker	Geo Ross	Saml Archibald
2d Lieuts.	Jno L Fisher	J Archibald	Michl M'Culloch
John Martin	M T Smith	Jas Wilson	1st Lieuts
John Buchanan	2d Lieuts	Robt Spencer	Wm Clarke
P Pursett	Wm M'Culley	2d Lieuts	R McDonald
Ed Ryan	J Gammill 2d	D V Crow	Dav Davidson
Jas Saul	Jas Pollock	Alex Blair	Jas Dawson
Chs Hamilton	G S Flemming	Sam Waugh	Mat Langille
Geo. Leppart	Jno Tupper	M Waugh	John Taylor
George Grono	Jno Johnston	Edw Langille	Chs Patterson
Chs Cleary	David Page	D V Crow	Donald Fraser
Chs Lawson	Geo S Rutherford	C McCurdy	Col M'Kenzie
Wm J Carritt	ford	Jon McKay	2d Lieuts.
Edward Albro	Adj W Eaton	J M L Dickson	H Douglas
George Munro	capt	Robt Corbet	F McDonald
Jas Richardson	Sg W B Lynds	Jas M Spencer	Jams Crichton
Chas Gray Jr	Q M A Knight	Wm Fletcher	David Ross
Adjutant		Robt Murray	H M'Laughlan
Archibld Scott	2d BATT	H M'Laughlan	Thos M'Cabe
Capt	Lt colonel.	Pat Marsh	James Perin
Qr M Th Hos-	R Dickson	Wm Cutten	George Grant
terman	majors	Jno Blair 2d	James McGill
Sur J Stirling	Thos I Brown	Steph Linten	John Graham
Asst W Owen	A Campbell	Jas Barnhill	Jas Robertson
	Jas Flemming	Wm Fleming	John Campbell
<i>Colchester Re-</i>	captains	Adj E De W	Mat Patterson
<i>giments</i>	Jas Dickson	Dickson, cap	Wm Campbell
1st BATT.	J Wier	Qr mr W Cut-	John Lorrin
Lt Col J Kent	John Crow	ten	Thos Taylor
Majors	R M'Lelland	Surg C Head	John M'Leod
Alex Archibald	R Spencer		adj Geo M'Don-
Jas D Blair	A Thompson	<i>Pistol Regi-</i>	ald, capt
Captains	E Dickson, abj	<i>ments.</i>	Q mr H Hatton
Jas Phillips	Robt Dickson	1st. BATT.	Sg.
Jos Fulton	Jas D Blair	LCol Geo Smith	
John Gammill	Alex Vance	Major	2d BATT
Jas Yuill	1st Lieuts	Robrt McKay	Lt Col
W Eaton, adj	Rufus McNutt	Captains	J Carmichael
Geo Corbett	D Dewar	Geo M'Donald	Majors
Wm Blair	Wm Baxter	John Patterson	D Murray
1st Lieuts	Alex Conkey	Wm Corbett	John Olding
Wm Phillips	Thos Corbett	John Gordon	Captains
Jas Rutherford	J Urquhart	Wm mortimer	T McPherson
S Archibald	H Munro	D Cameron	Simon McKay

D McDonald	Captains	Wm McKeen	Elisha Randall
Thos Munro	JDCunningham	Robert Boles	Don M'Donald
Simon Fraser	Aug M'Donald	John Archibald	Don M'Phee
D McLennan	H M'Lennan	Wm Lynch	Alln Cameron
Don McDonald	Wm Hierlihy	1st Lieuts	1st Lieuts.
John Smith	James Wilkie	James Tory, jr	Luke Terroir
A McDonald	A D Harrington	Wm Bedford	H M'Donald
Rodek McKay		Josh Maxwell	W Johnston
Jno Finlayson	1st Lieuts	M Taylor	Dld M'Donald
1st Lieuts.	Aix M'Donald	Hug M'Donald	Dld M'Donald
W Jas Corbett	Alln M'Donald	Wm Sinclair	Alex Cameron
Hugh Fraser	James A Ogden	Thomas Peart	Don M'Kenzie
Alex Frases	G A Forrestall	Wm Stropel	2d Lieuts.
Donald Munro	Jas Thompson	Alex Martin	John Fraser
Alex M'Donald	Geo Brennan	John Hudson	Cel Doitont
Don McDonald	Wm J Corbet	2d Lieuts.	Richd Connors
Jacob Olding	2d Lieuts.	Wm Hart	Ang Kennedy
Don Robertson	Alex Campbell	Jno Newton jr	Benj Hemis
Wm Chrisholm	Zeph Williams	John Stewart	H M'Gregor
Wilm Fraser	Alex Thomp-	Spin Whitman	Adjt Hugh M'
Robt Walker	son	John Kenealy	Donald
2d Lieuts	Colln Chisholm	Chas Bromley	
Paul Foster	James Ross	E J Cunning-	<i>Cumberland</i>
Mur M'Kenzie	Hug M'Donald	ham	<i>Regiment.</i>
Wm Fraser	John Corbett	Wm Simpson	Lieut Col.
John Fraser	Ach M'Donald	Wm Hadley	Thomas Roach
Peter Ross	Adjt A M Chis-	Ed Frenchville	Major.
Hector M'Lean	holm	James Marshal	R M G Dickey
Peter Grant	Q M R J For-	Hall Foster	Captains
James Fraser	restall	Iry Pride	Wm Chaman
Aug M'Donald	Sg A M'Don-	Aron M'Kinlap	T Chapman
Tho Copeland	ald	Da Mariin	Geo King
Don M'Dougal		John Jamiesen	Henry Purdy 2
Dn Sutherland	2d BATT	John Mitchell	Dan King
Alex Grant	Lt Cl R MCut	Adj Rob Bolce	Jas Roberts
Adj J Holmes	ler	Qmr Jno Jost	Jos. Black
Qmr A Fraser	major	Sg W. Cantrill	Thos Logan
Sg D Finlay-	Isaac Wyde		Wm Fowler
son	captains	3d BATT.	1st Lieuts
	J K McKeen	Lt. Colonel.	John Hunter
<i>County of Syd-</i>	Wm Heffernan	Rbt N. Henry	Gains Lewis
<i>Regiments.</i>	D Atwater	Major	G Lawrence
1st BATT	John Soutir	Jos Symonds	Saml Purdy
Lt Col Jn Mun-	John Grant	Captains,	R Cormo
ro	C Archibald	John Terroir	W M'Nab
Major	James Lyle	Jas Randall	B Chapman
Jno G Peabody	Edward Morris	Jn M'Millan	Jos Morse

Bro
Ant
B S
Amc
John
H C
2d
Josh
John
T Cl
Ezra
Jame
T W
J G
Dan
Gilbr
Mart
Thos
Aj T
cap
Surj

Camm
Reg
1st
Lie
W H
m
T Co
N Jer
Dan
Ca
John
E San
Di Lo
Wm S
John
R A M
F Par
Son
Elias
J M S
Ich D
1st I
M W
D Mo
Jacob

Brown Pipes	John Cochran	Evan M'Phee	Saml Sharpe
Anth Taylor	C Cormo	Arch Cox	John Prescott
B Steveus	T McLatchy	Caleb Burges	J H Allisou
Amos Eaton	R McHaffey	W Withrow 2	Jer Tupper
John Rushton	Edwd Carver	Henry Miller	E Burbridge
H Chapman	2d Lieuts	Jn M'Dougall	2d Lieuts.
2d Lieuts.	F Cochran	Jas C Nelsou	Wm Starr
Josh Pedee	Jos Northrup	Mich Terhune	Bej Donaldson
John Dotlen	G Brightman	Robt Wilson	T B Campbell
T Chapman	James Sterling	Ad J Withrow	Hen Gisner jnr
Ezra Bent	A Harvie	capt.	J Hutchison
James Cotes	P Walker	Q m M Casey	Richrd Starr
T Weatherby	Thos Alline	Surg F C Pike	Wm Miller jnr
J G Purdy	S C Palmer		Danl Huntley
Dan Pugsley	H Goudge	<i>King's County</i>	Saml Lowden
Gilbrt Seamans	Adj J Songster	<i>Regiments.</i>	Danl C Moore
Martin Bent jr	Qm T O'Brien	1st BATT.	Charles Finch
Thos Smith	Sg Jos Wiley	Lieut. Col	Aj E Beckwith
Aj T Chapman		Henry Gisner	Q mr G Lock-
capt.	2d BATT	majors,	wood
Surj E Purdy	LColRd Smith	W C Moore	Sg W Baxter
	Major	Sohh Wells	
<i>Cauntly Hants'</i>	Benjn Smith	Captains.	2d BATT
<i>Regiments.</i>	Captains	D. Cogswell	Lieut Co
1st BATT.	Thomas Ellis	John Morton	S Dennison
Lieut Col.	Michael Casey	Jos Crane	major
W H Shey	JWithrow, adj	A Beckwith aj	J N Crane
majors.	C Putnam	T Barnaby	captains
T Cochran	Alex McPhee	John Crane	Charles Brown
N Jenkins	Donald Grant	J H Gisner	Eben Bishop
Danl Wier	Jas Densmore	N Woodworth	Enoch Forsyth
Captains	John Grant	J Newcomb	John Fuller
John Elder	Edwd Murphy	LjVan Buskirk	E Forsytn
E Sandford	John Withrow	J H Chipman	J Johnston
Dl Lockhart	1st Lieuts	Saml Chipman	D Rathburne
Wm S Church	J Woodworth	1st Lieuts.	1st Lieuts
John Manning	John Sterling	H M Terry	C Randall
R A McHaffey	Alex Ferguson	J T Allison	S Avery junr
F Parker	Win Knowles	John Belcher	C H Rand
Songster & dj	Henry Blois	Elias Calkin	P M Benjamin
Elias Payzant	J Blackburn	WCCampbell	Ilijah Fowler
J M Smith	D Ettingen	G Cogsweli	2d Lieuts.
Ich Dimmock	Jno Densmore	Thos Welton	S Parminter
1st Lieuts	W Withrow	Judah Wells	O Hamilton
M Wright	2d Lieuts.	J C Magee	James Bragg
D Mosher	Saml Meek	Wm Pearce	George Terry
Jacob Anthony	John M'Phee	D Burbidge.	A Bishop

Dnl S Denisou	w m Davis	Seth Leonard	Henry Stewart
Jas Woodman	G Robinson	Chris Banks	Chas C Moody
Eliiph Fuller	S Cowling	1st Lieuts	Israel L Bent
Adj J M Terry	E Whitman	Jahn Dodge	Jos Bancroft
Qm J D Harrsi	Abner Troop	Zeb Poinney	2d Lientents
Sg W Webster	w m Saunders	John Fertizs	Alpheus Jones
	Step Thorne	James Gates	M Hutchiusion
<i>Parrsborough</i>	Robert Sparr	Wm Banks	Jon Morehouse
<i>Corps.</i>	Sm M'Cornack	Geo Fitch	J H Fitz Ran-
Lieut Col	1st Lieuts	C Marshall	dolph
Jas Ratchford	Jacob Borge	2d Lieuts	R Journeay
captains	Wm Harris	John Smith	Isac Morehouse
Jesse Lewis	S Parker	James Hall	Jonas Keen
Oman Lewis	S Chipman	H McGee	Israel Outhouse
A Thompson	Henry Gates	John Banks	John Waynes
Ales Fullerton	A Fowler	John Shaffner	Holland E Pay
W E Crane	Edw Hinkle	Saml Langley	son
C E Ratchford	Isaac Ditmars	Jas Dharlton	Adj E Morton
adj	Henry Gisner	Geo Brown	Q Wm Taylor
1st Lieuts	2d Lieuts.	Phin Bent	Sg J W Light-
B Fullerton	Jn Woodberry	S B Chipman	foot
Eden Kerr	J H Ditmars	Felix M'Neil	2d BATT
W Spratt	Weston Hall	Alfred Parker	Lient Col
Wm Marsh	Geo Bacteux	Samuel Starritt	S Doucett
Robert Dewis	James LeCain	Minard Parker	major
2d Lieuts.	John Hicks	Sl Maoie jun	Sam Campbell
Edw Morrison	John Kennedy	P Delancey	captains.
John Petis	Constant Morse	Aj R Stone cpt	H Barr
J Fulmore jur	James Wade	Q m Jno Ross	Sam White
q m.	Adj Geo Ro-	Sg J Va Burin	Jos Terrio
Dan Dickson	bertson, capt		F A Robichau
Jos Cox	Q mr Jas Gray	<i>West Annapols</i>	Josiah Porter
Adj CE Ratch-		<i>Clouny Regt</i>	John Holden
ford, capt.	2d BATT	1st BATT.	1st Lieuts
Q m J Fulmore	Lieut col	Lt Col.	Jos White
jun	BR Beardsley	W F Bonell	Jos Commo
Sg. A Gisner	Majors	major	George Taylor
	Ezl Cleveland	Wm Muir	J Parry
<i>East Annapolis</i>	John Delaney	captains	John Terrio
<i>County Regts.</i>	captains	J Timpany	Fras Bburnuf
1st BATT	C Shafner	T H Ruggles	2d Lieuts.
Lieut Col	Foster Bolsor	D Rutherford	Benj White
T Ritchie	E Phinney	Edw Morgan	Caprean Mar-
Major	Arch Hacks	J E Morton 2d	tin
Tim Ruggles	H Parker	B M'Connell	B Robichau
Captains	J Armstrong	1st Lieuts	Sel Robichau
E Thorne	Robt Stone, aj	Chs Budd	Ciriac Belive

Benon
Adj H
Q m H

Shelbu
gim

1st L

Lieut

J V Bu

cap

I G En

Benj Pe

Wm H

James

P Spear

John Lo

William

1st Li

Saml Lo

Wm Me

Thos Jo

Eben M

Wm Sta

2d Lie

Richard

D Matth

James G

Geo Bool

Josh Sno

Gilbert F

A Vernou

Adj I GE

capt

Q mr J T

2d BATT

Lieut

Abraham

major

JMcKinne

captain

D V Nord

James Ha

W Whitek

JJD'enter

J Servan

M Amero

Stewart	Benonie White	D Bodreau	M Shaw	Jos Freeman
Moody	Adj H Barr	Theo K Frost	A Raymond	majors
L Bent	Q m H Barr, jr	1st Lieuts.	2d Lieuts	J R Dewolf
ncroft		John Williams	J Cann	J Whitman
entents	<i>Shelburne Re-</i>	John Hatfield	J Hilton	
as Jones	<i>giments.</i>	S D'entremont	D Gowen	captains
chiuson	1st BATT.	P D'entremont	J Crosby	J Roberts
rehouse	Lieut Col	Ceril Porter	C Lewis	Jon Dewolf
tz Ran-	J V Buskirk	Sil Porter	Stayley Brown	Wm B. Taylor
h	captains	M Jeffy	Jos Stoneman	John Campbell
rneay	I G Enslow, aj	John Rider	H Chipman	W Freeman aj
orehouse	Benj Perry	2d Lieuts.	H Huntingdon	James Morton
Keen	Wm Holden	C Blanvelt	Edwd Huestis	Tat Parks
outhouse	James Barclay	G V Buskirk	J Ultey	1st Lieuts
Waynes	P Spearwater	W Larkin	Adj G Bingay,	F Tupper
ndE Pay	John Lock	J B Bodreau	capt	T Freeman
	William muir	Jos J Porter	Q m J Tooker	N Freeman
	1st Lieuts.	H Nickerson	Sg H G Farish	Wm Irwin
E Morton	Saml Lock	Chas McLarrin	AS Jos B Bond	J L Darrow
m Taylor	Wm McMillan	R D'entromont		John McVicker
W Light-	Thos Johnston	Aj D V Norden	4th BATT	Saml Freeman
t	Eben Martin	capt	Lieut Col.	Thos P Calkin
dBATT	Wm Stalker	Q m Jas Lent	W C Sargeant	Wm McGill
nt Col	2d Lieuts.		captains,	Z Freeman
ucett	Richard King	Sd BATT	J P Doane	S Freeman
major	D Matthews	Lieut Col	James Smith	Stephen Mack
Campbell	James Griffin	John Bingay	J Sargeant, aj	Geo Pearson
ptains.	Geo Boole	major	J Osborne	John Fraser
rr	Josh Snow	G B V Norden	K Reynolds	
White	Gilbert Kenua	captains.	1st Lieuts.	2d Lieuts
errio	A Vernou	James Dane	S Benny	John Cobb
Robichau	Adj I G Enslow	D Pattin	Jethro Coville	Jos Ford
Porter	capt	Israel Kelly	E Knowles	Geo Preeman
Holden	Q mr J Tottle	John Cook	Josh Attwood	Jno McDonald
Lieuts		Benjamin Lewis	John Lyle	A McDonald
White	2d BATT.	M Killum	2d Lieuts.	Geo Freeman
ommo	Lieut Col	A Huntingdon	Thomas Coffin	E Knowles
e Taylor	Abraham Lent	Geo Bingay ajt	James Kenny	Jno H Freeman
y	major.	Thos B Tooker	J C Crowell	Jas A Taylor
Terrio	J McKinnon	1st Lieuts	Wm Paterson	John Kempton
Burnuf	captains.	Jos Shaw	Adj J Sargeant	Robt Roberts
Lieuts.	D V Nordon ajt	John Pattin	capt	Adj W Freeman
White	James Hatfield	Z Churchill	Q m S ODoane	capt
an Mar-	W Whitehouse	James Allen		Q m. John H.
	JJD'entermont	R Robins	<i>Queen's Only</i>	Dewaal
ichau	J Servan	G Bond	<i>Regiment</i>	Sg A Webster
obichau	M Amero	E W Moody	Lieut Col	As do D Grieve
Belivo				

County Lunenburg Regts		CAPE BRETON,	
	majors	1st Regt.	major
	John Evans	1st Battalion	Jas Duffus
	J Creighton		
1st BATT	J S Thompson	Lieut Colonel	captains
Lieut Col	captains	Chs E Leonard	Jno James
J C Rudolf	Geo Burgoyne	majors	G McKay
majors	Hen Ernst, adj	W H Crawley	Don McLeod
Wm Rudolf	G Ernst	captains	J McKay
Hen Oxner	John Hiltz	Saml Plant	Don Logan
captains	Jas Walker	Sam Rigby, adj	Wm Jones
C Oxner	P Strum	Rich Brown	Jo Munro
H Kaulback	Jno Hunt	Wm R Bell	1st Lieuts
John Anderson	Geo Langille	Chas M Dodd	P Hume
C J Rudolf	Thos Zwicker	Edm Dodd	Alx McKinnon
F W James	Alex Johnston	C Barrington	A Munro
Geo Anderson	Jn G Thomson	John Ferris	Wm Munro
Geo Creighton	Jno Zwicker	1st Lieuts	Ken McLeod
F Oxford	Geo Ernst	Luke Hall	Dn Carmichael
Fras Rudolf	Geo Zwicker	Lewis Brown	J Brown, adj
Wm Drew	Rob Mooney	Geo Rigby	Jno McNeil
Thos Boehner	G Metzler	Josh Weeks	2d Lieuts
1st Lieuts	Jno Crandle	Wm Gammill	Saml Peters
Fras Boehner	1st Lieuts	Chs Dunaresq	Jno Fraser
Mat Ernst	John Nans	Arnold Holmes	Jas Sparling
Nich Oxner	J Comingo, qm	Jno Hill	Rbt Sutherland
John Harley	Leo Hierlihy	Peter Moore	Alex Anderson
Philip Mason	Jos Gates	Syd Barrington	Jno Sparling
Geo Faney	Chas Evans	2d Lieuts	H Ingrahan
John Frederick	Jos Thomson	Wm Cook	Jno McLeod, 1
2d Lieuts	A Zwicker	Rd Gibbons, jr	Jno McLeod, 2
P Kaulback	H Hiltz	R Campbell	Jas Fraser
Chas J Rudolf	Jos Lordly	H Ross	Thos Joice
Chas Bolman	Leon Gilbert	J Ross	adj J Brown, lt
John Ernst	M Publicover	Edw Brown	
Chas Pernette	Jos Dimmock	Jno Despard	1st Regt
Joseph Miller	Adam Lantz	Niel McKay	2d Battallion
Garret Miller	Wm Light	J French	Lieut Colonel
Wm Mosher	Edw Zwicker	J Woods	P H Clark
Jas Dauphine	Fred Ernst	A Hartell	major
M Smith	Jno Kedy	A Grant	Wm Gammill
A J G T Solomon	Dan Dimmock		captains
Q m D S Grant	Wm Heckman	adj S Rigby, cpt	C McAlpine
Sug G Jacobs		Q m Jno Ball	Jno Scott
	adj H Ernst cpt	Sg Wm Haire	1st Lieuts
2d BATT	Q m J Comingo		Jno martin
Lieut Col	Sg Jno Harley	1st Regt	Dun Currie
Jno Heckman		2d Battallion	Alex Cambell

Ths
Neil
Don
Gibb
Aug
Jno M
adj G
2
1st
Li
Clom
major
ca
m Do
T Cha
Ptr de
Jno F
John I
E F I
Wm C
Thos
John I
L
Desz I
Jno B
A Bry
J F W
B G G
Victor
Isaac F
Thos d
Sim B
Benj T
Chas w
Is print
Country
chiefly c
ing as e
encoura
found ra
misrule.
an illeg
the Con
Free Pr
as appea
Printers
this imp

Ths Pembroke	Chas Terriot	J Morrison	Dun Campbell
Neil McNeil	Hen martell	Jno Proctor	Den Campbell
Don McDonald	Peter Terriot	Ad McPherson	D Cameron
GibbsGisner ad	Peter Forest	adjD Pelier hpc	A McIntyre
Aug McGilvery	adj E Thomas		Jno McKay
Jno McEacran	Chandler, capt	3d Regt.	Adj J L Tre
adj G Gisner It	Q m Jn walsh	1st Battalion	main, capt
	Sg A madden	Lieut Col	
	2d Regt	Wm McKeen	3d Regt
	1st Battalion	captains	2d Battalion
	Lieut Col	T Tremain, ajt	maj H Taylor
Clemt Hubert	Lieut Colonel	w watts	captains
major J Janvrin	L Kavanagh	Jno murray	McLellan
captains	majors	Jno Campbell	N McLellan
M Doyle	Chas M McNab	Alex McDonald	A McDonald
T Chandler d	captains	Jno Mc Keen	A McDonald
Ptr de Carteret	Jno Cameron	H Mcmillan	Jno Campbell
Jno Ferrier	Doug McNab	Nath Clough	R McKinnon
John Fuller	DI Pellier, adj	Law O'Byrne	Lieuts
E F Lemontais	Jno B McNeil	Robt Petterson	Jno Ross
Wm Crichton	Jno Walsh	Robt Gray	Jno McKinnon
Thos LeNoir	Thos Simons	Lieuts	Jno McFarlan
John R Smith	M Kavanagh	Alex Mcmuir	Jas McLennan
Lieuts	AndLeBrocque	C Mcmuir	A Smith
Desz Boudroit	Robt McNab	P Le Brocque	HO Quin
Jno Ballaine	Lieuts	H McDonald	Chas Boudroit
A Brymer	Justen munbor-	T McDonald	Dun McRea
J F Wilson	gatte	A Chisholm	M McDonaldl
B G G Potts	Juo matheson	A McDonald	vm Campbell
Victor Terriot	Alex murchison	D Gronoy	A McLennan
Isaac Paon	F McPherson	Jas McDonald	A Mc Innis
Thos duBois	N McMullen	Jas Harley	Jno McLellan
Sim Babin	Don Campbell	Alex Beaton	A Chisholm
Benj Terriot	Jno McDougall	Jas Doyle	R McDonald
Chas wood	Jno Smith	A McDonald	adj DCampbel

THE HALIFAX FREE PRESS.

Is printed every Tuesday, by EDMUND WARD, and sent to the Country free of postage for Fifteen Shillings per annum. It is chiefly devoted to literature and politics, contains as much reading as either of the other Halifax papers; and while it does not encourage a factious opposition to Government, will always be found ranged on the side of rational freedom and opposed to misrule. The Proprietor has refused to pay Postage, it being an illegal exaction, and unfairly levied; as it was proven before the Committee of the Assembly last winter, that in town. The Free Press and Recorder alone, are called upon to pay; while as appears from a certificate filed in the Secretary's Office, the Printers of the Journal, Nova Scotian and Acadian, all charge this imposition upon their subscribers.

FROM THE FARMER'S GUIDE.

WEEDS.

A very respected friend wishes to obtain from us some information relative to the best means of destroying a certain troublesome weed, called skunk cabbage, which infests water meadows, &c. Now, it so happens that during the time of our officiating as a practical farmer in our early days, we never came in contact with this particular annoyance to cultivators, and must request patriotic correspondents to aid us in subduing it. We will also be on the look out for weapons for assailing this vegetable pest.

We will however, say a word or two respecting weeds in general; and except in so doing to utter some truisms applicable to the above mentioned as well as to other *green serpents*, which rob our soil, and thereby pick our pockets and take the bread from our mouths, to an extent not realized by superficial thinkers.

No plant can be naturally propagated at any distance from its location unless by seeds; at least, if you never permit it to ripen its seeds it will not spread very rapidly. Therefore if thistle, skunk cabbage or any other vegetable nuisance should make its unwelcome appearance on any part of your farm, and you cannot conveniently extirpate root and branch for lack of time or help, you must guillotine the intruder with a scythe or a sickle as often as he shows his hateful head.

"Any plant," says the *Farmer's Assistant* "when long divested of its leaves or of its stalks if it bear no leaves, must eventually perish. The roots alone cannot long exist. All therefore that is necessary for extirpating any weed, is to keep all that grows above ground constantly cut or pulled off, and the more frequently this is repeated, the sooner will the roots lose all further vegetable power."

This observation may be useful though we think the author is incorrect in part. Some plants will bear to be shorn of their tops, and that very closely for a long time without destroying their roots.—The roots of grasses on a common are not destroyed by close feeding, and you may shave a lawn or bowling green for years and not injure its turf nor tarnish its verdure. Yet grasses in improper places are weeds not however to be destroyed by cropping. But by decapitating weeds you prevent their semination, and of course they will be almost if not entirely confined to their native beds.—Aquatic weeds such as flags, rushes, and perhaps skunk cabbage are only subdued by draining the land in which they grow.

A good preventive of the increase of weeds is burning the stubble, as it stands after reaping. This will destroy the seeds

of m
warm
subst
or la
most
nured
hold i

In
fested
most
Era
farne
few y
lived
contin

It
do no
ther
being
by cu
been
ing th

It is
them
hard;
than

Bus
ditiou
subdu

Ald
other
said w

So
most
ing w
it nat
by it
After
cheap

In t
lay be
subjec
time w

of many weeds, as well as the eggs larvæ of insects, and will warm the ground and fertile it by the ashes of the the burnt substances. A succession of hoed crops will eradicate weeds or laying down land to grass seed will stifle and destroy almost any weeds especially if the land be previously well manured and mellowed, so that the grass may obtain a strong hold in the soil.

• BUSHES. •

In many parts of our country, the pasture grounds are infested, and often overrun with noxious shrubs; this is the most slovenly part of our husbandry, and ought to be cured.

Eradicating them, says *Deane*, requires so much labor, that farmers are most commonly content with cutting them in a few years. But the more cuttings they survive the longer lived they are apt to be; and the harder to kill as the roots continually gain strength.

It is certainly true, that cutting bushes in the summer will do no more towards destroying them, than doing it in any other season, particularly in August.—Other circumstances being equal, the wettest weather is best for destroying shrubs by cutting. Spreading plaster on ground where bushes have been cut, may tend to check their resprouting, by encouraging the growth of grass.

It is said to be a good method of destroying bushes, to cut them with hoes close to the surface, when the ground is frozen hard; and that more may be destroyed in a day, in this way than the usual method of cutting with a bush sythe.

Bushes which grow in clusters, as alder, &c. may be expeditiously pulled up by oxen; and this is an effectual way to subdue them.

Alder is considerably harder to subdue, than almost any other kind of bush; mowing them five times in a season, it is said will not kill them. The roots of the shrub oak also.

To destroy bushes in swamps, flooding 2 or 3 summers is the most approved method. But if this is not convenient, draining will so alter the manure of the soil, that the shrubs which it naturally produced before, will not be any longer nourished by it; and one cutting may be sufficient.

After all extirpation, by dragging them out, and by fire, is cheapest and most effectual.

OLD WHEAT.

In the course of the present season we expect to be able to lay before our readers, one of the most interesting facts on the subject of wheat that has ever been published. At the present time we can only say generally, that there is at present grow-

ng in France a field of wheat, the seed of which was upward of two thousand years old. It was obtained we believe directly from one who was an inhabitant of Egypt somewhere about the year 418 before Christ, by some gentlemen in France!—In other words, it was taken from a mummy. At this time we only know that the wheat was in every particular the same as that of the present time, and that it was planted and growing finely at the last accounts we had of it. Arrangements have been made to obtain all the particulars in relation to it, and intend to say them before our readers.

This is a most interesting circumstance, and adds one of the most important items to the history of agriculture ever before recorded. It proves conclusively, that wheat is not a factitious vegetable, as has been so often and so authoritatively asserted; and farther, that it was not originally an inferior grain and improved by cultivation to its present quality. But, on the contrary that it has been at least two thousand two hundred and fifty years, exactly the same as it is now. A great deal might be said on this interesting subject, but we forbear until more detailed statements arrive from Europe, it completely annihilates for instance, one of the principal grounds of the theory of the degeneracy of wheat to cheat; which is,—that wheat was cheat originally, but by cultivation has been made wheat, and hence is liable to return to cheat again.

FATTENING PIGS ON POTATOES.—In the “report of the London Society for bettering the poor,” is a paper published by the Rev Thomas Wilson, giving an account of an experiment of fattening a pig on potatos only. The pig was forrowed in August and continued in the straw-yarn till march succeeding, when it was kept entirely on potatos thoroughly baked, but not burned on the outside. Water was provided in another trough, but the pig drank but little. The potatos were given whole, dry, and unmixed with other food; the quantity consumed being about two bushels a week. On the 8th of march the pig weighed about fifty-six pounds; when it was killed, on the 3d of may the weight was one hundred and one pounds. It was fat on the inside, “proved well, and was a complete cottager’s pig.”

ON SCRAPING THE BARK OFF TREES.—MR. THOMAS THOMPSON in the gardner’s magazine, thinks that trees do not decay so much for want of fibrous roots to imbibe nourishment, as from the compression of the alburnum by the indurated outer bark; hence the advantage of scraping it off in old trees, while removing it in young trees does harm. Mr Thompson has scraped off the bark of old trees for upwards of thirty years. The best season is in the spring and autumn; and after the operation the

was upward-
believe direct-
ewhere about
in France!—

this time we
r the same as
and growing
gements have
to it, and in-

ds one of the
ever before
ot a factitious
ely asserted ;
grain and im-
on the con-
hundred and
t deal might
r until more
etely annihil-
the theory of
t. wheat was
e wheat, and

t of the Lon-
olished by the
experiment of
rowed in Au-
ceding, when
but not burn-
er trough, but
whole, dry,
med being a-
e pig weigh
he 3d of May
It was fat on
tager's pig."

as Thompson
not decay so
ment, as from
outer bark ;
, while remo-
as scraped off
rs. The best
operation the

