

Historic, archived document

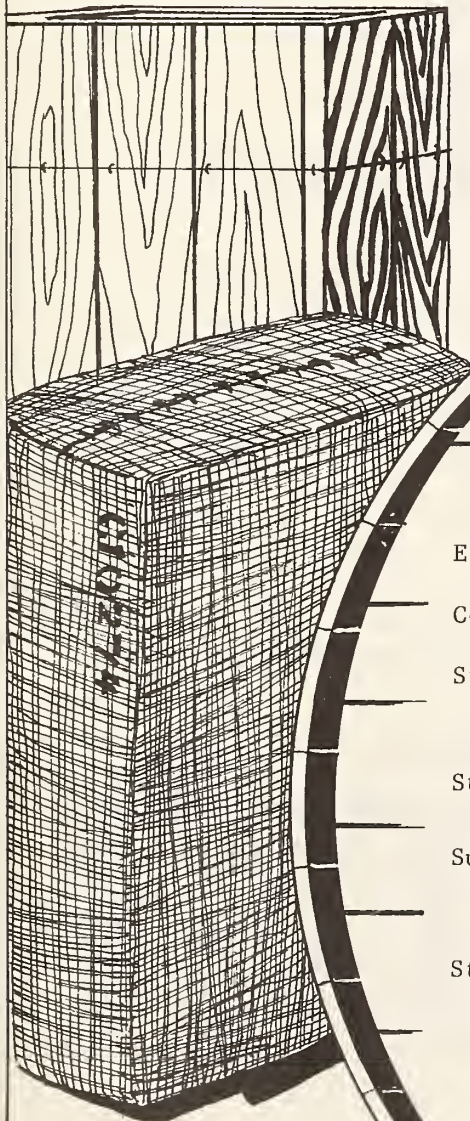
Do not assume content reflects current scientific knowledge, policies, or practices.

Reserve
1.9
Ec 714

TOBACCO STOCKS

as of APRIL 1, 1975

U.S. DEPT. OF AGRICULTURE
NAT'L. AGRIC. LIBRARY
JUN 30 1975



CONTENTS

Estimated Utilization of Leaf Tobacco	2
Conversion factors.	3
Stocks of leaf tobacco, by types converted to a FARM-SALES-WEIGHT equivalent.	4
Stocks of leaf tobacco, summary by types.	5
Summary of tobacco leaf represented in inventories of tobacco sheet.	6
Stocks of leaf tobacco, by types, showing separately quantities owned by dealers and manufacturers.	7

BRIEF CLASSIFICATION OF LEAF TOBACCO

(Covering Classes and Types)

CLASS 1, FLUE-CURED TYPES
 Type 11 Old and Middle Belt Flue-cured.
 Type 12 Eastern North Carolina Flue-cured.
 Type 13 South Carolina Flue-cured.
 Type 14 Georgia and Florida Flue-cured.

CLASS 1, FIRE-CURED TYPES
 Type 21 Virginia Fire-cured.
 Type 22 Tennessee-Kentucky Fire-cured,
 Eastern District.
 Type 23 Kentucky-Tennessee Fire-cured,
 Western District.

CLASS 3, AIR-CURED TYPES
 Light Air-cured (Class 3a)
 Type 31 Burley.
 Type 32 Southern Maryland.

Dark Air-cured (Class 3b)
 Type 35 One Sucker.
 Type 36 Green River.
 Type 37 Virginia Sun-cured.

CLASS 4, CIGAR-FILLER TYPES
 Type 41 Pennsylvania Seedleaf.
 Type 42-44 Ohio Filler.
 Type 46 Puerto Rican Sun-grown.

CLASS 5, CIGAR-BINDER TYPES
 Type 51 Connecticut Broadleaf.
 Type 52 Connecticut Havana Seed.
 Type 54 Southern Wisconsin.
 Type 55 Northern Wisconsin.

CLASS 6, CIGAR-WRAPPER TYPES
 Type 61 Connecticut Shade.
 Type 62 Georgia and Florida Shade.

MISCELLANEOUS TYPES OF
 DOMESTIC TOBACCO
 Type 72 Louisiana Perique.
 Type 73 All domestic types of tobacco
 not otherwise classified.

FOREIGN TYPES
 Type 81 Cuba.
 Type 82 Indonesia.
 Type 83 Philippine Islands.
 Type 84 Brazil.
 Type 85 Colombia.
 Type 86 Dominican Republic.
 Type 87 Paraguay.
 Type 88 Mexico.
 Type 89 Other foreign-grown cigar leaf.
 Type 91 Foreign-grown Oriental and Aromatic.
 Type 92 Foreign-grown Flue-cured.
 Type 93 Foreign-grown Burley.

TABLE 1. Estimated utilization of Flue-cured, Burley, and Maryland tobaccos in cigarettes and other products, 1970 - 1974, July-June basis. (Farm-sales-weight)

Year beginning July	Flue-cured			Burley 1/			Maryland		
	Ciga- rettes	Other 2/ Products	Total Domestic	Ciga- rettes	Other 2/ Products	Total Domestic	Ciga- rettes	Other Products 2/	Total Domestic
	Mil. lb.	Mil. lb.	Mil. lb.	Mil. lb.	Mil. lb.	Mil. lb.	Mil. lb.	Mil. lb.	Mil. lb.
1970	596	44	640	441	62	503	27	1	28
1971	618	45	663	455	60	515	17	1	18
1972	624	40	664	479	55	534	13	1	14
1973	655	48	703	473	60	533	13	1	14
1974									
1975									
1976									

1/ Marketing year domestic disappearance substituted for Burley and Maryland.

2/ Smoking and chewing tobacco and cigars; includes also exports of partially processed and shredded tobacco, classified as "bulk smoking".

Table 2. Estimated leaf used by domestic manufacturers in cigarettes, by types of tobacco, 1970 - 1974, July-June basis. (Farm-sales-weight)

Year beginning July	Flue-cured		Burley 1/		Maryland 1/		Imported		Total Leaf Used	Production of Cigarettes
	Quantity	Percent of Total	Quantity	Percent of Total	Quantity	Percent of Total	Quantity	Percent of Total		
	Mil. lb.	Pct.	Mil. lb.	Pct.	Mil. lb.	Pct.	Mil. lb.	Pct.	Mil. lb.	Billions
1970	596	47.6	441	35.3	27	2.2	187	14.9	1,251	585.1
1971	618	47.4	455	34.9	17	1.3	215	16.4	1,305	592.6
1972	624	47.6	479	36.5	13	1.0	196	14.9	1,312	615.6
1973	655	47.6	473	34.3	13	1.0	236	17.1	1,377	652.0
1974										
1975										
1976										

1/ Burley and Maryland marketing year substituted.

TABLE 3. Estimated leaf used per 1,000 cigarettes by domestic manufacturers, by types of tobacco, 1970-1974, June-July basis. (Farm-sales-weight)

Year beginning July	Domestic Types					Imported	Total	Cigarettes per Pound of Leaf
	Flue-cured	Burley	Maryland	Total Domestic				
	Pounds	Pounds	Pounds	Pounds	Pounds	Pounds	Number	
1970	1.02	.75	.05	1.82	.32	2.14	468	
1971	1.04	.77	.03	1.84	.36	2.20	454	
1972	1.01	.78	.02	1.81	.32	2.13	469	
1973	1.01	.73	.02	1.75	.36	2.11	473	
1974								
1975								
1976								

Estimates of AMS Tobacco Division.

TABLE 4. Factors for adjusting stocks reported by dealers and manufacturers to a farm-sales-weight equivalent, by types of tobacco.

AUCTION MARKET AREAS (Types 11-37) 1/

TYPE NAME	TYPE NUMBER	Factors to multiply by to convert -					
		Stemmed stocks to -		Unstemmed stocks to -			
		Unstemmed Equivalent	Farm-sales-weight Equivalent	Farm-sales-weight Equivalent	From Packed Weight 1/		
Flue-cured	11-14	1.295	1.450		1.12		
Virginia Fire-cured	21	1.299	1.598		1.23		
Tennessee and Kentucky Fire-cured	22-23	1.324	2/ 1.471		1.04		
Burley	31	1.345	1.510		1.12		
Southern Maryland	32	1.373	1.400		1.02		
One Sucker	35	1.413	1.554		1.10		
Green River	36	1.389	1.570		1.13		
Virginia Sun-cured	37	1.326	1.538		1.16		
Miscellaneous Domestic	72-73	1.333	1.493		1.12		
DOMESTIC-GROWN CIGAR LEAF (Types 41-62)							
			2/	Sweated Weight 3/	Marked Weight 3/	Farm-sales-weight 3/	Average for Apr. 1, 1975 Report 3/
Pennsylvania Seedleaf	41	1.444	1.718	1.19	1.05	1.00	1.02
Ohio	42-44	1.454	1.730	1.19	1.05	1.00	1.06
Puerto Rican	46	1.314	1.551	1.18	1.16	1.00	(1.16 U.S. (1.11 P.R.
Connecticut Broadleaf	51	1.375	1.622	1.18	1.04	1.00	1.08
Connecticut Havana Seed	52	1.386	1.635	1.18	1.04	1.00	1.15
Southern Wisconsin	54	1.383	1.687	1.22	1.06	1.00	1.02
Northern Wisconsin	55	1.404	1.713	1.22	1.06	1.00	1.04
Connecticut Shade	61	1.245	1.419	1.14	1.10	1.00	1.03
Georgia and Florida Shade	62	1.235	1.408	1.14	1.10	1.00	1.11
IMPORTED LEAF (Types 81-93)							
Cigar Leaf	81-89	1.400	1.624			1.16	
Foreign-grown Oriental and Aromatic	91	1.333	1.466			1.10	
Foreign-grown Flue-cured	92	1.295	1.450			1.12	
Foreign-grown Burley	93	1.345	1.506			1.12	

1/ Types 11-37 are reported on the basis of packed weight.

2/ Farm-sales-weight equivalent based on unstemmed sweated weight factor.

3/ The instructions for reporting unstemmed cigar-leaf of the domestic types require that dealers and manufacturers indicate the weight basis on which the tobacco is reported, namely, farm-sales-weight, marked weight, or sweated weight. The stocks are converted to the farm-sales-weight equivalent on the basis of average factors reflecting the percentage reported each quarter in each of these three categories.

TABLE 5. Stocks of leaf tobacco owned by dealers and manufacturers, by types, converted to a farm-sales-weight equivalent. April 1, 1975, compared with other quarters. 1/

FARM SALES WEIGHT

	U.S. Type Number	April 1,			Jan. 1, 1975	Oct. 1 1974	July 1, 1974
		1975	1974	1973			
		1,000 lb.	1,000 lb.	1,000 lb.	1,000 lb.	1,000 lb.	1,000 lb.
Flue-cured	11-14	1,940,273	1,926,508	2,037,117	2,225,542*	2,155,835	1,607,284
Virginia fire-cured.	21	9,705	9,635	9,392	7,998*	7,101	8,442
Tennessee and Kentucky fire-cured. (Eastern District)	22	48,111	54,509	62,427	34,655	40,192	46,668
Kentucky and Tennessee (Western District)	23	6,477	9,102	11,015	4,064	4,907	6,693
Total fire-cured.	21-23	64,293	73,246	82,834	46,717*	52,200	63,803
Burley	31	1,373,888	1,377,494	1,530,262	1,314,301*	1,070,665	1,216,535
Southern Maryland.	32	45,387	39,989	42,871	51,703*	61,711	67,711
Total light air-cured	31-32	1,419,275	1,417,483	1,573,133	1,366,004*	1,132,376	1,284,453
One Sucker	35	24,346	30,504	34,022	21,352	23,117	27,845
Green River.	36	16,327	17,532	18,827	13,533	13,772	15,369
Virginia sun-cured	37	2,672	3,399	3,694	3,086	2,974	3,177
Total dark air-cured.	35-37	43,345	51,435	56,543	37,971	39,863	46,391
Pennsylvania seedleaf	41	57,420	55,190	65,106	41,047	47,513	49,214
Ohio Filler (Miami Valley)	42-44	7,542	8,538	8,683	5,044	5,854	6,849
Puerto Rican:							
in United States.	46	2,389	1,850	3,688	2,312	3,557	2,841
in Puerto Rico.	46	5,129	4,637	5,711	3,654	6,489	8,449
Total cigar filler.	41-46	72,480	70,215	83,188	52,057	63,413	67,353
Connecticut Valley Broadleaf	51	4,942	5,673	5,621	4,625	4,877	5,132
Connecticut Valley Havana Seed	52	2,234	2,006	2,413	2,080	2,121	2,288
Southern Wisconsin	54	25,031	24,242	24,236	16,911	18,924	21,857
Northern Wisconsin	55	20,214	23,429	23,645	15,355	16,921	20,433
Total cigar binder.	51-55	52,421	55,350	55,915	38,971	42,843	49,710
Connecticut shade.	61	12,220	9,804	11,394	11,517	9,652	8,503
Georgia and Florida shade.	62	7,121	7,303	8,196	7,275	6,621	6,534
Total cigar wrapper	61-62	19,341	17,107	19,590	18,792	16,273	15,037
Perique.	72	484	575	659	711	523	601
Other miscellaneous domestic 2/.	73	6,095	5,465	5,204	6,782	6,712	5,899
Total miscellaneous domestic	72-73	6,579	6,040	5,863	7,493	7,235	6,500
Cuba	81	125	191	350	145	173	172
Indonesia.	82	10,712	10,561	6,644	10,896	9,352	10,644
Philippine Islands	83	38,688	35,309	36,864	37,702	40,959	40,896
Brazil	84	7,601	7,923	8,074	7,917	8,834	8,937
Columbia	85	10,685	9,809	8,730	11,487	13,756	9,746
Dominican Republic	86	24,501	22,780	19,883	19,194	19,826	21,987
Paraguay	87	10,816	7,106	7,843	10,909	8,072	8,326
Mexico	88	5,498	4,449	5,740	6,216	5,616	3,018
Other foreign-grown cigar leaf	89	20,566	22,327	19,495	20,160	19,547	20,393
Total imported leaf	81-89	129,192	120,455	113,623	124,626	126,135	124,119
Foreign-grown Oriental and Aromatic.	91	411,995	373,592	375,856	377,088*	350,304	383,435
Foreign-grown flue-cured	92	48,757	43,802	31,277	52,730	54,400	46,755
Foreign-grown burley	93	106,658	59,320	23,657	118,176	88,353	67,285
Total imported cigarette and smoking tobacco leaf.	91-93	567,410	476,714	430,790	547,994*	493,057	497,475
TOTAL ALL TYPES	11-93	4,314,609	4,214,553	4,458,596	4,466,167*	4,129,230	3,762,125

1/ Totals include stocks of leaf tobacco sheet. See separate reporting in Table 7.

2/ Type 73 is defined as all domestic tobacco not otherwise classified.

* Revision.

Table 6. Stocks of leaf tobacco owned by dealers and manufacturers, summary by types April 1, 1975, compared with other quarters. 1/ 2/

REPORTED WEIGHT

TYPE NAME	U.S. Type Number	April 1, 1975 3/			Apr. 1, 1974	Jan. 1, 1975	Oct. 1, 1974
		Unstemmed	Stemmed	Total			
		1,000 lb.	1,000 lb.	1,000 lb.			
Flue-cured	11-14	148,431	1,223,469	1,371,900	1,381,616	1,578,711*	1,548,820
Virginia fire-cured	21	7,768	94	7,862	7,748	6,432*	5,745
Tennessee and Kentucky fire-cured (Eastern District)	22	45,824	308	46,132	52,281	33,238	38,530
Kentucky and Tennessee fire-cured (Western District)	23	6,200	20	6,220	8,501	3,895	4,687
Total fire-cured	21-23	59,792	422	60,214	68,530	43,565*	48,962
Burley	31	121,577	819,683	941,260	961,655	925,736*	745,055
Southern Maryland	32	5,365	28,511	33,876	30,418	38,515	47,772
Total light air-cured	31-32	126,942	848,194	975,136	992,073	964,251*	792,827
One Sucker	35	13,287	6,262	19,549	24,865	17,268	18,690
Green River	36	11,885	1,844	13,729	14,647	11,354	11,389
Virginia sun-cured	37	920	1,044	1,964	2,539	2,319	2,249
Total dark air-cured	35-37	26,092	9,150	35,242	42,051	30,941	32,328
Pennsylvania Seedleaf	41	33,417	13,583	47,000	46,032	32,938	37,609
Ohio Filler (Miami Valley)	42-44	6,848	164	7,012	7,585	4,442	5,187
Puerto Rico:							
in United States	46	820	927	1,747	1,248	1,741	2,813
in Puerto Rico	46	3,210	1,009	4,219	3,795	2,903	5,618
Total cigar filler	41-46	44,295	15,683	59,978	58,660	42,024	51,227
Connecticut Valley Broadleaf	51	3,971	403	4,374	4,879	4,023	4,249
Connecticut Valley Havana Seed	52	1,871	50	1,921	1,730	1,801	1,829
Southern Wisconsin	54	19,975	2,761	22,736	22,173	15,162	17,392
Northern Wisconsin	55	11,383	4,889	16,272	19,817	12,721	13,759
Total cigar binder	51-55	37,200	8,103	45,303	48,599	33,707	37,229
Connecticut shade	61	9,264	1,561	10,825	8,827	10,395	8,708
Georgia and Florida shade	62	5,304	876	6,180	6,332	6,399	5,757
Total cigar wrapper	61-62	14,568	2,437	17,005	15,159	16,794	14,465
Perique	72	0	324	324	393	493	367
Other miscellaneous domestic	73 4/	6	4,078	4,084	3,661	4,545	4,497
Total miscellaneous domestic	72-73	6	4,402	4,408	4,054	5,038	4,864
Cuba	81	1	77	78	121	89	109
Indonesia	82	6,307	2,092	8,399	8,515	8,619	7,397
Philippine Islands	83	11,419	15,667	27,086	24,975	26,785	28,714
Brazil	84	4,225	1,662	5,887	6,240	6,169	7,040
Colombia	85	2,358	4,895	7,253	7,150	8,198	10,245
Dominican Republic	86	14,013	5,078	19,091	17,965	14,803	15,151
Paraguay	87	5,209	2,940	8,149	5,743	8,086	6,507
Mexico	88	2,019	1,943	3,962	3,491	4,559	4,175
Other foreign-grown cigar leaf	89	10,569	5,115	15,684	17,579	15,401	15,449
Total imported leaf	81-89	56,120	39,469	95,589	91,779	92,709	94,787
Foreign-grown Oriental and Aromatic	91	371,357	2,389	373,746	338,929	342,187*	317,829
Foreign-grown flue-cured	92	9,949	25,941	35,890	32,333	39,760	41,378
Foreign-grown burley	93	9,352	63,867	73,219	40,204	81,248	60,533
Total imported cigarette and smoking tobacco leaf	91-93	390,658	92,197	482,855	411,466	463,195*	419,740
TOTAL ALL TYPES	11-93	904,104	2,243,526	3,147,630	3,113,987	3,270,935*	3,045,249

1/ Totals include stocks of leaf reported in tobacco sheet. See reporting in Table 7.

2/ These statistics represent the quantity of leaf tobacco owned by dealers and manufacturers and others subject to the provisions of PL 661, enacted January 14, 1929 and the amendments thereto.

3/ Subject to revision.

4/ For explanation of stocks included in this classification see footnote 2 on Page 4.

* Revision

Table 7. Summary of tobacco leaf represented in inventories of tobacco sheet, for cigar binder and wrapper, and for cigarettes (including smoking tobacco) separately.

REPORTED WEIGHT

		Cigar Binder and Wrapper					
		April 1,			Jan. 1,	Oct. 1,	July 1,
U.S. Type Number		1975	1974	1973	1975	1974	1974
		1,000 lb.	1,000 lb.	1,000 lb.	1,000 lb.	1,000 lb.	1,000 lb.
11-14	Stemmed	4	4	8	8	4	5
32	Stemmed	19	37	46	14	31	42
41	Unstemmed	235	407	532	329	217	341
	Stemmed	133	477	507	416	368	689
	Total	368	884	1,039	745	585	1,030
42-44	Stemmed	7	13	30	5	11	14
46	Unstemmed	0	0	0	0	0	6
	Stemmed	0	5	8	5	6	0
	Total	0	5	8	5	6	6
51	Unstemmed	23	47	61	75	53	12
	Stemmed	0	0	0	0	0	0
	Total	23	47	61	75	53	12
52	Unstemmed	0	45	51	45	51	0
	Stemmed	9	4	0	7	5	57
	Total	9	49	51	52	56	57
54	Stemmed	183	137	328	124	91	187
55	Unstemmed	2	2	4	4	2	4
	Stemmed	21	19	23	39	19	20
	Total	23	21	27	43	21	24
61	Unstemmed	7	1	9	4	1	2
	Stemmed	7	12	23	17	11	14
	Total	14	13	32	21	12	16
62	Stemmed	1	1	1	1	2	2
81-89	Unstemmed	80	6	17	63	5	9
	Stemmed	204	188	192	144	175	203
	Total	284	194	209	207	180	212
Total	Unstemmed	347	508	674	520	329	374
	Stemmed	588	897	1,166	780	723	1,233
	Total	935	1,405	1,840	1,300	1,052	1,607

Cigarettes (including smoking tobacco)

11-14	Unstemmed	1,473	1,164	1,200	1,526	1,505	1,350
	Stemmed	12,261	10,179	10,794	11,438*	10,649	10,340
	Total	13,734	11,343	11,994	12,964*	12,254	11,690
31	Unstemmed	800	520	816	628	534	510
	Stemmed	7,225	5,315	6,096	6,230*	5,610	5,624
	Total	8,025	5,835	6,912	6,858*	6,144	6,134
32	Stemmed	118	133	390	370	356	130
41	Unstemmed	239	239	842	239	239	239
	Stemmed	28	28	254	28	28	28
	Total	267	267	1,096	267	267	267
61	Unstemmed	15	15	27	15	15	15
	Stemmed	18	18	31	18	18	18
	Total	33	33	58	33	33	33
91	Unstemmed	4,249	3,318	3,274	4,142	3,912	3,571
	Stemmed	1,421	1,208	964	988*	1,098	1,162
	Total	5,670	4,526	4,238	5,130*	5,010	4,733
92	Stemmed	0	0	0	0	0	0
Total	Unstemmed	6,776	5,256	6,159	6,550	6,205	5,685
	Stemmed	21,071	16,881	18,529	19,072*	17,759	17,302
	Total	27,847	22,137	24,688	25,622*	23,964	22,987

GRAND TOTAL

Total	Unstemmed	7,123	5,764	6,833	7,070	6,534	6,059
All Types	Stemmed	21,659	17,778	19,695	19,852*	18,482	18,535
	Total	28,782	23,542	26,528	26,922*	25,017	24,594

* Revision

Table 8. Stocks of leaf tobacco, by types, showing separately quantities owned by dealers and manufacturers, April 1, 1975 compared with April 1, 1974. 1/ 2/

REPORTED WEIGHT

U.S. Type Number	Reported as owned by manufacturers 3/				Reported as owned by dealers (including loan stocks) 3/			
	April 1, 1975			April 1,	April 1, 1975			April 1,
	Unstemmed	Stemmed	Total	1974	Unstemmed	Stemmed	Total	1974
	1,000 lb.	1,000 lb.	1,000 lb.	1,000 lb.	1,000 lb.	1,000 lb.	1,000 lb.	1,000 lb.
11-14	28,383	978,906	1,007,289	921,043	120,048	244,563	364,611	460,573
21	4,173	35	4,208	4,059	3,595	59	3,654	3,689
22	31,535	204	31,739	36,324	14,289	104	14,393	15,957
23	3,277	20	3,297	4,862	2,923	0	2,923	3,639
21-23	38,985	259	39,244	45,245	20,807	163	20,970	23,285
31	54,110	788,408	842,518	767,070	67,467	31,275	98,742	194,585
32	29	21,928	21,957	19,697	5,336	6,583	11,919	10,721
31-32	54,139	810,336	864,475	786,767	72,803	37,858	110,661	205,306
35	11,014	6,233	17,247	18,473	2,273	29	2,302	6,392
36	10,328	1,673	12,001	10,366	1,557	171	1,728	4,281
37	918	1,044	1,962	2,538	2	0	2	1
35-37	22,260	8,950	31,210	31,377	3,832	200	4,032	10,674
41	22,240	12,237	34,477	31,658	11,177	1,346	12,523	14,374
42-44	5,903	120	6,023	5,822	945	44	989	1,763
46 4/	1,117	1,715	2,832	3,218	2,913	221	3,134	1,825
41-46	29,260	14,072	43,332	40,698	15,035	1,611	16,646	17,962
51	1,293	181	1,474	2,017	2,678	222	2,900	2,862
52	754	50	804	653	1,117	0	1,117	1,077
54	18,913	2,577	21,490	20,306	1,062	184	1,246	1,867
55	10,362	4,814	15,176	18,086	1,021	75	1,096	1,731
51-55	31,322	7,622	38,944	41,062	5,878	481	6,359	7,537
61	7,959	1,515	9,474	6,928	1,305	46	1,351	1,899
62	4,932	226	5,158	5,056	372	650	1,022	1,276
61-62	12,891	1,741	14,632	11,984	1,677	696	2,373	3,175
72	0	279	279	335	0	45	45	58
73 5/	6	4,071	4,077	3,609	0	7	7	52
72-73	6	4,350	4,356	3,944	0	52	52	110
81	1	16	17	35	0	61	61	86
82	3,401	1,907	5,308	3,889	2,906	185	3,091	4,626
83	6,748	3,908	10,656	11,041	4,671	11,759	16,430	13,934
84	2,124	1,515	3,639	3,007	2,101	147	2,248	3,233
85	1,478	4,695	6,173	4,956	880	200	1,080	2,194
86	12,436	4,718	17,154	15,497	1,577	360	1,937	2,468
87	3,179	2,886	6,065	3,177	2,030	54	2,084	2,566
88	1,721	1,934	3,655	2,299	298	9	307	1,192
89	4,825	4,587	9,412	8,806	5,744	528	6,272	8,773
81-89	35,913	26,166	62,079	52,707	20,207	13,303	33,510	39,072
91	370,740	2,389	373,129	338,584	617	0	617	345
92	3,267	23,942	27,209	23,227	6,682	1,999	8,681	9,106
93	5,130	61,780	66,910	35,656	4,222	2,087	6,309	4,548
91-93	379,137	88,111	467,248	397,467	11,521	4,086	15,607	13,999
11-93	632,296	1,940,513	2,572,809	2,332,294	271,808	303,013	574,821	781,693

1/ Total includes stocks of leaf reported in tobacco sheet. See separate reportings in Table 7.

2/ These statistics represent the quantity of leaf tobacco owned by dealers and manufacturers and others subject to the provisions of PL 661 enacted January 14, 1929 and the amendments thereto.

3/ The quantities shown as owned by manufacturers represent domestic manufacturers only. All Government loan stocks are dealers' holdings.

4/ Includes stocks on the island of Puerto Rico.

5/ For explanation of stocks included in this classification see footnote 2 on Page 4.

UNITED STATES DEPARTMENT OF AGRICULTURE
WASHINGTON, D. C. 20250

POSTAGE AND FEES PAID
U.S. DEPARTMENT OF
AGRICULTURE
AGR-101



OFFICIAL BUSINESS

PENALTY FOR PRIVATE USE, \$300

NOTICE

If you no longer need this publication, check here return this sheet, and your name will be dropped from the mailing list.

If your address should be changed, write the new address on this sheet and return the whole sheet to:

Tobacco Division, Stocks Report
Agricultural Marketing Service
U. S. Department of Agriculture
Washington, D. C. 20250

Tobacco Inspection Services are available to all residents of the United States regardless of race, creed, or national origin. Violations should be reported to the Secretary of Agriculture, Washington, D. C. 20250

