



紅粉小万  
經師屋阿三

種彦作  
豊國画

# 筆色猪曆手

上 成春賣

出

馬喰町二丁目角  
西村屋與八版

西村屋與八版

馬喰町二丁目角



草のりつまでも同條多繪草紙とほほるう書て物思ふ忠孝の  
義理男女の戀情えんと時節の末あめりて嗚呼えとも詮方なき  
うくと留る下心で勝間歌の正本小綴で合せ昔曆その中段乃  
おせんが浮名とのぞくか新む。このふるるとも。ひくくも。冊子に  
縁語今年ハニ五大の月小万と訓二万う十一と退れく一せを  
く茂兵衛が身のぬく日父の大おん天おん小再栄を源五兵衛か  
よりの困入を凡二十丁敷ふとむ。机の種まさう。吉書  
永壽堂があきあひとめ。の雙紙とあ。ぬ

此冊子文政甲申冬十月前編三冊草稿ちやくく画る者  
故豊國より酉秋九月後編の稿を脱して今の豊國が筆小綴  
文政九年丙戌春發販

柳亭種彦誌

衛五源勝  
兵間



奉納



雪の下の藝子  
紅粉乃小万



由次郎

經師きんし意春いしゅん  
女房にようぼう阿三あさん



經師きんし屋手代やてだ  
藻兵衛もへいゑ

藝者げいしや  
矢助やすけ

藻兵衛  
女房  
阿玉



笹野の  
三五兵衛



袖乞の娘  
阿地筋



流小...

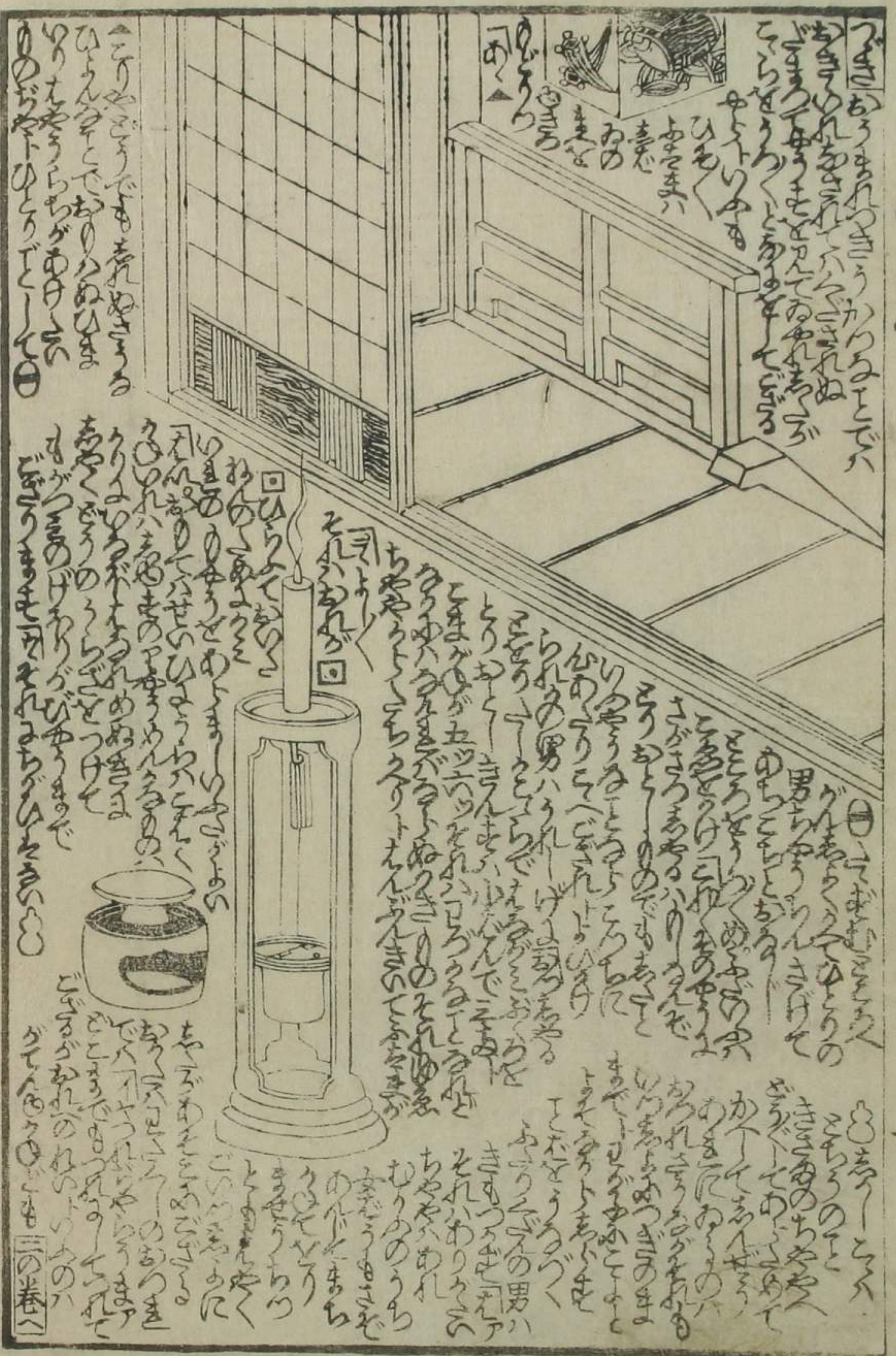


Handwritten text on the left side of the page.

Handwritten text above the illustration, including the characters '男' (man) and '女' (woman).

Handwritten text below the illustration.

Handwritten text at the bottom left of the page.



Handwritten text on the right side of the page.

Handwritten text above the illustration.

Handwritten text below the illustration, including the characters '男' (man) and '女' (woman).









Vertical text on the left margin of the first page.

Vertical text on the right margin of the second page.



Handwritten text in the upper right section of the right page, written in vertical columns.



Handwritten text in the upper left section of the right page, written in vertical columns.



Handwritten text in the lower section of the right page, written in vertical columns.

Handwritten text in the upper left section of the left page, written in vertical columns.

Handwritten text in the lower section of the left page, written in vertical columns.



Handwritten Japanese text surrounding the illustration, likely describing the scene or the individuals. The text is arranged in vertical columns, typical of Edo-period publications.



Large block of handwritten Japanese text on the left page, surrounding the illustration. The text is organized into vertical columns, providing detailed information or commentary.

州名屋

會館通判

十

十一





一ツのやうなやうな  
 一ツのやうなやうな

一ツのやうなやうな  
 一ツのやうなやうな



一ツのやうなやうな  
 一ツのやうなやうな

一ツのやうなやうな  
 一ツのやうなやうな

一ツのやうなやうな  
 一ツのやうなやうな

一ツのやうなやうな

一ツのやうなやうな







上方源六郎流 古冊物  
 笠巻猪に屠吉  
 柳草種彦作  
 歌川豊国画  
 文政成春 西村校

後編

種彦作  
 華耕道友  
 豊国画

此の種彦作の書は、  
 上方源六郎流の古冊物  
 笠巻猪に屠吉  
 柳草種彦作  
 歌川豊国画  
 文政成春 西村校

此の種彦作の書は、  
 上方源六郎流の古冊物  
 笠巻猪に屠吉  
 柳草種彦作  
 歌川豊国画  
 文政成春 西村校

此の種彦作の書は、  
 上方源六郎流の古冊物  
 笠巻猪に屠吉  
 柳草種彦作  
 歌川豊国画  
 文政成春 西村校



於きん小万  
 曆手下結卷  
 柳亭種彦作  
 歌川豊国画  
 永壽堂梓



Handwritten text in a cursive style, likely a transcription of a story or dialogue. The text is arranged in vertical columns, with some lines written horizontally. The characters are dense and difficult to read without specialized knowledge of the script.



Handwritten text in a cursive style, continuing the narrative or dialogue from the left page. The text is arranged in vertical columns, with some lines written horizontally. The characters are dense and difficult to read without specialized knowledge of the script.











Vertical text on the left side of the illustration, written in a cursive Japanese style.

Vertical text on the right side of the illustration, written in a cursive Japanese style.

Vertical text at the bottom of the illustration, written in a cursive Japanese style.



Vertical text on the left side of the illustration, written in a cursive Japanese style.

Vertical text on the right side of the illustration, written in a cursive Japanese style.

Vertical text at the bottom of the illustration, written in a cursive Japanese style.

Vertical text on the right edge of the page, written in a cursive Japanese style.



Handwritten text in vertical columns, likely a play script or commentary, surrounding the illustration on the left page.



Handwritten text in vertical columns, likely a play script or commentary, surrounding the illustration on the right page.





Handwritten text in a cursive script, likely a play script, positioned to the right of the illustration. The text is written vertically and appears to be in a historical Japanese dialect.



Handwritten text in a cursive script, continuing the play script, positioned below the illustration. The text is written vertically and appears to be in a historical Japanese dialect.

Handwritten text in a cursive script, likely a play script, positioned at the top of the page. The text is written vertically and appears to be in a historical Japanese dialect.



Handwritten text in a cursive script, likely a play script, positioned at the bottom of the page. The text is written vertically and appears to be in a historical Japanese dialect.

Handwritten text in vertical columns, likely a play script or commentary, surrounding the illustration. The text is written in a cursive style.



Handwritten text in vertical columns, likely a play script or commentary, surrounding the illustration. The text is written in a cursive style.

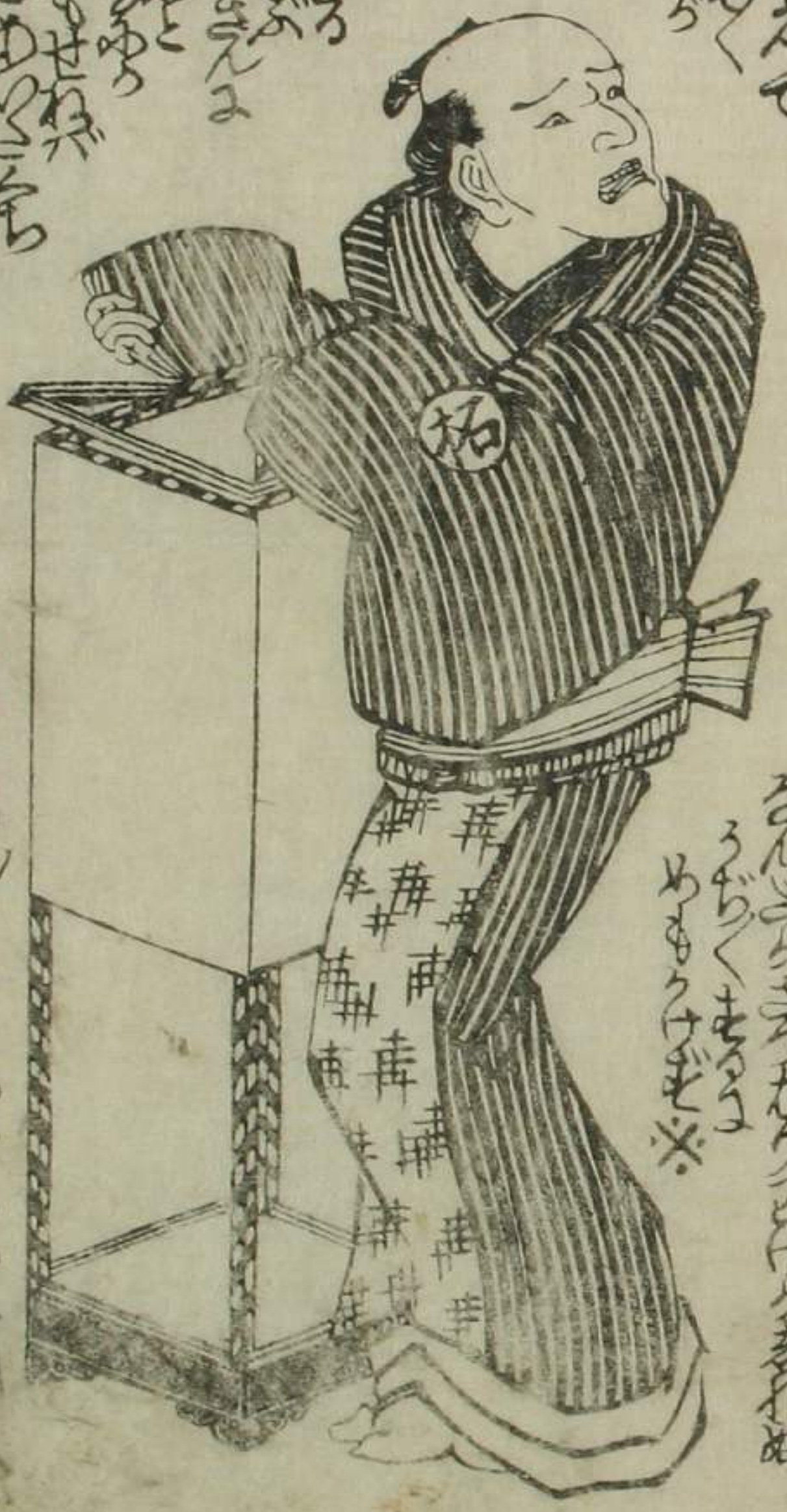


おしやな



五の巻のシナシロのシノハナハカ...

五の巻のシナシロのシノハナハカ...



五の巻のシナシロのシノハナハカ...

五の巻のシナシロのシノハナハカ...





Handwritten text in a cursive style, located to the left of the top illustration.

Handwritten text in a cursive style, located to the right of the top illustration.

Handwritten text in a cursive style, located below the top illustration.



Handwritten text in a cursive style, located to the left of the bottom illustration.

Handwritten text in a cursive style, located to the right of the bottom illustration.

Handwritten text in a cursive style, located below the bottom illustration.







豊国画程



よりのちのち... 豊国画程... 豊国画程... 豊国画程...

〃〃〃



豊国画程... 豊国画程... 豊国画程... 豊国画程...

此女に... 豊国画程... 豊国画程... 豊国画程...

お三

山本道平著 御定式 社説

此  
之  
所  
由  
也