

Historic, Archive Document

Do not assume content reflects current scientific knowledge, policies, or practices.

62.61

1876 - 1927



F. J. GROOTENDORST ROSE

WOODLAWN NURSERIES

ROCHESTER

NEW YORK

891 GARSON AVENUE

~

AT CULVER ROAD



ALLEN L. WOOD

Fifty-one Years of Quality

WOODLAWN Nurseries had its humble beginning fifty-one years ago when Allen L. Wood, then a boy, began to raise Cuthbert Raspberry plants on an acre of ground given to him by his father. Today Mr. Wood is the active head of a business that extends to every part of the United States, and to Canada and several foreign countries. As the city of Rochester grew it became necessary to give over the land surrounding the old Wood homestead to city lots. The offices and packing cellars still remain in the city, but the farms are located at Dansville, N. Y.

The policies which have been responsible for placing Woodlawn Nurseries among the foremost in the country have been definitely established since the business had its beginning. These policies are: **Shipping stock guaranteed true to name, growing "the beautiful and the best" plants and trees, trying at all times to please customers.** Closely following these policies has stimulated the steady growth of the business, inspired the confidence of its thousands of customers and helped Woodlawn Nurseries contribute toward making Rochester "The Flower City."

Woodlawn Nurseries were among the pioneers in offering the service of supplying stock direct from the nursery to the customer. It is responsible for enabling customers to save from one-third to one-half when buying stock. It saves the expense of middleman or agent and avoids mistakes and injuries that may occur through repeated handling. This is the method of purchasing recommended by the United States Department of Agriculture.

Satisfied customers everywhere have been our best advertisers. They have recommended our stock to their friends and thousands of letters praise the quality of the stock and the results obtained from it. This confidence which our customers have in us is appreciated and Woodlawn Nurseries continue to strive in every way to please the customer.

ROSES

Wood's Choice Climbing Roses

TWO YEARS OLD

FIELD GROWN

If sent by mail add 5c per plant; 25c per ten

Climbing Roses—Grow easily, bloom profusely, and are hardy throughout the country. The foliage is beautiful.

Thousand Beauties—Superb; large double clusters; varying colors; blooms freely from June until August; strong grower; magnificent glossy foliage.

60c each; 10 for \$5.50

Dr. Van Fleet—A newer type of Climber, combining absolute hardiness with flowers as large as Tea Roses. Shows a mass of beautiful clusters of rich, flesh-pink buds, and when opened large, delicate flowers, with stems 12 to 18 inches long.

60c each; 10 for \$5.50

Dorothy Perkins—Clear shell-pink with flowers borne in clusters; full and double with crinkled petals. Foliage stays until winter. One of the finest Climbers.

50c each; 10 for \$4.80

Excelsa or Red Dorothy Perkins—The most handsome of all Climbers. Double scarlet flowers in large trusses. Vigorous, hardy and disease-resistant.

50c each; 10 for \$4.80

Climbing American Beauty—This new, wonderful, beautiful rose produces twenty times as many blooms as the old American Beauty. Fragrant, rich carmine flowers, 3 to 4 inches in diameter, are produced on separate stems. Hardy and vigorous grower with foliage remaining beautiful until snowfall.

85c each; 10 for \$7.50

Four Lovely Climbing Roses for \$2.00

Dr. Van Fleet 60c each

Excelsa (Red Dorothy

Perkins) 50c each

Paul's Scarlet Climber 85c each

Thousand Beauties 60c each

RAMBLERS

50c each; 10 for \$4.80

Crimson Rambler—Vigorous, rapid growing, with large clusters of crimson flowers. Makes attractive hedge.

White Rambler—Similar to crimson; blossoms pure white.

Yellow Rambler—Light canary shade; clusters smaller, individual flowers larger than crimson Rambler.



PAUL'S SCARLET CLIMBER

This picture suggests a pleasing plan for planting

Paul's Scarlet Climber—New Dazzling Climbing Rose. Color is vivid scarlet of lasting brilliancy, outclassing every other climbing variety in the scarlet shades. Does not fade but remains bright until flowers fall. Blossoms are of medium size, semi-double and perfect in bud form. Hardy and of good climbing habit. Has received many awards. Very popular.

85c each; 10 for \$7.50

THERE ARE NO ROSES LIKE YOUR OWN

WOOD'S CHOICE ROSES

STRONG, TWO-YEAR, FIELD-GROWN PLANTS
WILL BLOOM THE FIRST YEAR

EVERYWHERE the rose is the best known and most popular flower. Because of its fragrance, its delicacy of shape, form and coloring, it appeals to everyone. The rose deserves the name which it has received—"Queen of Flowers."

Quality Roses at Popular Prices

RUGOSA ROSES

Rugosa Rose Hybrids—Cannot be excelled for massing or hedge planting and are attractive in the garden. The plants are highly ornamental and the hardiest of all roses. Foliage is dark green, compact, leathery and disease-resistant.

Sir Thomas Lipton—Double, snow-white flowers growing in clusters of medium size. Plant grows 4 feet high. Blooms throughout the summer. 65c each; 10 for \$5.50

F. J. Grootendorst—This new everblooming variety is becoming more and more popular. The small, fairly double, red flowers grow in clusters. Edge of each petal is serrated and somewhat resembles a carnation. They bloom in early summer and continue until the heavy frosts come. The plant is bushy and a strong grower. A distinctive and highly desirable variety.

85c each; 10 for \$7.50

See front cover

TEA AND HYBRID-TEA ROSES



PINK KILLARNEY—QUEEN OF THE IRISH ROSES

Pink Killarney—Color especially beautiful, an exquisite shade of deep sea-shell pink. Buds and flowers enormous size. Petals being frequently two and one-half inches deep. Blooms profusely throughout season.

\$1.00 each

SAVE MONEY by Ordering Early

Orders received on or before March 26th will be allowed 8% discount

Gruss an Teplitz—Scarlet, shading to velvety crimson, very fragrant, a full grower and most profuse bearer. One of the choicest of all Roses.

85c each

Juliet—Should be planted with every collection of Roses. Color on outside old gold, inside a rich rosy red, changing to deep rose as the flowers expand. Very fragrant.

85c each

Mme. Butterfly—Color is a harmony of pink, apricot, and gold. Flowers resemble Ophelia in form. This Rose is largely grown for cut-flowers and keeps well when cut. Fine for bedding, for if kept well cultivated and in good growing condition it will produce flowers almost continuously all summer until frost.

\$1.00 each

Pride Collection of HYBRID TEA ROSES

Illustrated in Color on Page 5

Mrs. Aaron Ward—Coppery-orange in bud, golden-orange when partly developed, pinkish-fawn when fully open. Color effect of whole flower is Indian-yellow. All who see it love it.

\$1.00 each

Duchess of Wellington—Called orange Killarney. Intense saffron-yellow, stained with rich crimson. As the flower develops it becomes deep copper, saffron-yellow. Petals large and of great substance. Free flowering and delightfully fragrant, and without a rival in this class and color.

\$1.00 each

White Killarney—A duplicate of the charming pink Killarney, with flowers white as snow.

85c each

Columbia—Unusually good American rose. Flowers large, fully double; bright lively pink in color; fragrant. Strong grower, almost thornless.

\$1.00 each

Los Angeles—One of the most notable American garden roses. Its color is a luminous flame pink, tone coral, shaded translucent gold at base of petals. Upright grower bearing perfect, fragrant flowers on strong stems.

\$1.00 each

Ophelia—Beautiful in bud and flower; blooms freely; a long keeper. Color, salmon-pink, shading to rose. Attractive and beautiful variety. One of the best.

\$1.00 each

Red Radiance—Extra hardy, vigorous and prolific; fine grower and free bloomer. One of the best and prettiest all-around garden red roses.

\$1.00 each

The "PRIDE COLLECTION" of ten Roses described above \$8.75 Prepaid. Woodlawn Quality Roses are strong, 2-year, field-grown plants, and will bloom the first year. See colored plate page 5



J. J. L. MOCK

Jonkheer J. L. Mock—A very large rose of perfect formation. Color is clear imperial pink with petals a silvery rose. Unusually fragrant. It is hardy and a free and continuous bloomer. Buds are borne on long, stiff, erect stems.

\$1.00 each

PREMIER (New). This is one of the most magnificent Roses. Color is rich, deep rose and the full, perfect blooms, of large size, are produced on almost thornless stems. A robust grower, producing splendid blooms all season.

\$1.00 each

Snow Queen (formerly Frau Karl Druschki)—White American Beauty—Vigorous and hardy. A great beauty.

85c each

BABY RAMBLER

Baby Rambler—Bush, not Climbing. Flowers are large, well formed, crimson in color, and borne in clusters of 20 to 40 flowers at one time. Blooms profusely from June until frost. Very desirable for summer bedding and, when planted as a hedge, is an object of beauty.

75c each

Favorite Rose Collection

5—Two-year field grown bushes.

Catalog Price \$3.45

General Jacqueminot Collection Price

Paul Neyron

Mad. Gabriel Luizet

Clio

Frau Karl Druschki

\$2.95



GENERAL JACQUEMINOT

General Jacqueminot—Brilliant crimson, one of the most handsome and showy roses of this color; beautiful in the bud. Popularly known as "Jack Rose."

Mrs. John Laing—Soft, delicate pink, with a satiny sheen; fragrant. Free bloomer. One of the best light pink Roses.

Marshall P. Wilder—Cherry-carmine, shaded with maroon; fragrant. Vigorous and hardy. Blooms profusely long after others are out of flower.

Margaret Dickson—A beautiful white Rose with a pale flesh pink center, petals very large; shell shaped and of great substance; fragrant, foliage very large, dark green.

Ulrich Brunner—A Rose of beautiful form and finish, very striking for its color of brilliant cherry-crimson. Free bloomer.

Hybrid Perpetuals

Special Price, 65c each, 10 for \$6.00

By mail add 5c per plant.

Clio—Flowers large, in clusters, of fine globular form, flesh-color shaded in the center with rosy pink; growth vigorous; handsome foliage. One of the best roses.

Mad. Gabriel Luizet—A magnificent large, full and fragrant flower. Soft pink with deep flesh colored center. One of the choicest.

Prince Camille de Rohan—Deep velvety crimson, nearest approach to a black rose; large, moderately full. Splendid rose.

Paul Neyron—This magnificent Rose is by far the largest in cultivation; very double; beautiful deep rose color and delightfully fragrant; blossoms abundantly through entire season.



MRS. JOHN LAING



"PRIDE COLLECTION"

The Pride of the Rochester Flower Show
HYBRID-TEA ROSES

Ten strong, healthy, 2 year field
grown roses, flowering this year,
for \$8.75 prepaid

- | | |
|-----------------|----------------|
| 1—Ward | 6—Los Angeles |
| 2—Wellington | 7—Ophelia |
| 3—Killarney | 8—Snow Queen |
| 4—Columbia | 9—Red Radiance |
| 5—J. J. L. Mock | 10—Premier |

Descriptions of these varieties
page 3

HEDGE PLANTS

NOT many years ago the only hedges to be seen were those used for defense or defining boundaries, but today they are planted extensively for ornament.

Many beautiful effects are now possible, and it is needless to say that these fences of living green beautify our homes and are rapidly supplanting the old-fashioned picket and iron fences. The most widely planted of the deciduous hedges are the California Privet and Barberry Thunbergii.



BARBERRY THUNBERGII HEDGE

Barberry Thunbergii—Dwarf growing; foliage rich, bright green; brilliant red color in autumn. Red berries also appear at that time. Perfectly hardy, easily transplanted and free from insects. Very ornamental and as attractive in winter as in summer.

	Special Prices	Each	Ten	Hundred
15 to 18 in., 2 years, Extra	\$.20	\$1.50	\$10.00
18 to 24 in., 3 years, Extra30	2.50	15.00
2 to 3 ft., 3 years, Extra40	3.00	20.00

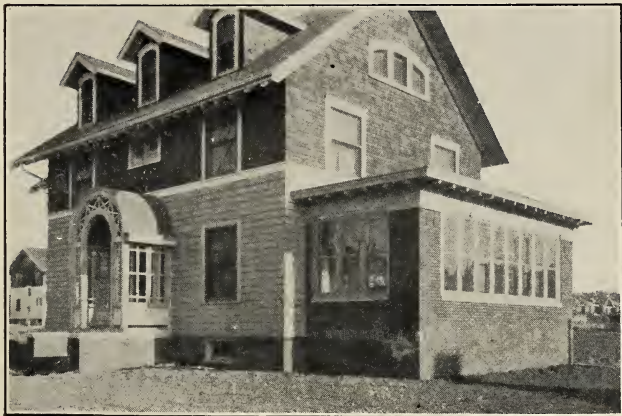


CALIFORNIA PRIVET HEDGE

California Privet—A rapid and vigorous grower. It has handsome, glossy, oval-shaped leaves which remain well into the winter. Very popular for ornamental hedges. Extra well-branched.

	Special Prices	Each	Ten	Hundred
9 to 12 inch; 2 years	\$.08	\$.50	\$3.00
15 to 18 inch; 2 years10	.75	4.00
18 to 24 inch; 2 years15	1.00	6.00
2 to 3 ft.; 2 years20	1.25	8.00

PLANTING SUGGESTIONS



Before—

Although this plan may not meet the requirements of your own home, it conveys an idea of the beautiful effects one can attain by planting shrubs intelligently.

Do not hesitate to consult with our Landscape Dept. We have many suggestions in planting plans that can be adapted to your home grounds.

Simply make a rough pencil layout of the location, giving dimensions. You will be surprised how our idea will finish the picture.

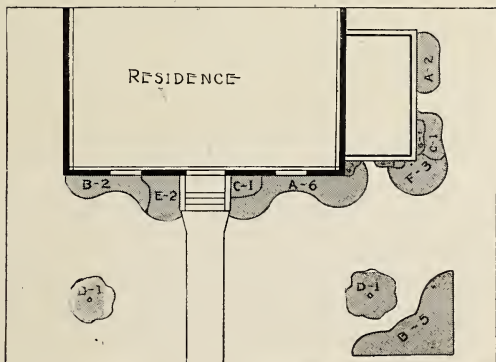


—and after

List of Shrubs and Planting Plan

- A 8 Spirea Van Houttei
- B 7 Barberry Thunbergii; 18-24"
- C 2 Snowberry Red
- D 2 Silver-Leaved Maple Trees; 8 to 10 ft.
- E 2 Bush Honeysuckle
- F 3 Deutzia—Pride of Rochester
- G 3 Vine Ampelopsis Veitchii

This Collection for \$13.00





HARDY VINES

	<i>Each</i>
1—Clematis Mme. Ed. Andre	\$.75
2—Clematis Paniculata65
3—Wistaria Chinese Purple75
4—Clematis Jackmanni75
5—Honeysuckle Hall's Japan . .	.50
6—Virginia Creeper50

Descriptions on opposite page

VINES

Strong, Two-year Field Grown Plants

VINES, particularly these hardy ornamental varieties, require practically no care or attention. They serve not only as a charmingly beautiful decoration but are also used to provide much needed shade. Vines may often change the appearance of an unbroken wall or liven up and beautify an otherwise monotonous or unsightly spot. Our vines are all two-years old, well-rooted, strong quality stock.

Woodlawn Quality Vines are the best and strongest you can buy.

If sent by Parcel Post add 5c each; 25c per 10

Clematis, Jackmanni—Large, intense violet purple flowers and remarkable for its velvety richness; free in growth and abundant and successive bloomer. Probably the best known and most popular of the large-flowered kinds. See page 8. 75c each

Clematis, Henryii—Single; the finest white Clematis; very large, fine flowers consisting generally of from six to eight sepals; grows rapidly, blooms freely during summer and autumn. 75c each

Clematis, Paniculata—Single, white. Of extremely rapid growth, with shining green foliage, and a profusion of flowers which are small but borne in large panicles; very popular. See page 8. 65c each

Clematis, Mme. Ed. Andre—Flowers medium size; dark red; flowering. See page 8. 75c each

Honeysuckle, Hall's Japan—A strong, vigorous, almost evergreen sort, with pure white flowers, changing to yellow. Very fragrant. Covered with flowers from July to December; holds its leaves until January. Best bloomer of all vines. See page 8. 50c each; 10 for \$4.50

Ampelopsis Veitchii (Boston Ivy)—Desirable vine for covering walls, verandas, and tree trunks. Leaves beautiful in summer, turning a rich crimson in autumn. Only vine that will cling to brick or cement wall. Fast grower. 75c each; 10 for \$6.50

Virginia Creeper—A fine rich green in summer, changing to crimson in autumn. Affords shade quickly and is very desirable for covering walls, verandas or trunks of trees. See page 8. 50c each; 10 for \$4.00

Euonymus Radicans—One of the finest evergreen vines, with small, rich green foliage, and pink fruits in cells which separate and expose the scarlet arils. For covering rocky banks, rough walls, tree-trunks, etc., also for vases, basket and borders of beds 50c each; 10 for \$4.50

Bittersweet—Large leaves, yellow flowers, clusters of orange-capsuled fruit in the autumn; fast grower. Makes charming winter house decorations. 75c each

Birthwort, or Dutchman's Pipe—Brownish flowers, resembles a miniature pipe. This is an ideal vine for situations requiring dense shade. Splendid for archways or verandas. The leaves are very large, broad, closely laid and deep green; vine grows rapidly. \$1.00 each

Wistaria, Chinese Purple—A rapid grower, unsurpassed for beauty and picturesqueness. It is hardy and lives to a great age, doing as well in cities amid unfavorable conditions as in the country. Has long, pendulous clusters of pale flowers in May, June and in autumn. See page 8. 75 each; 10 for \$6.50



CLEMATIS PANICULATA

ORNAMENTAL TREES

TREES are important in giving grounds that well-kept appearance which is so desirable. As is the case with flowering shrubs, vines and roses, they should be planted according to a well conceived plan. Ornamental trees may be successfully used to shut off unsightly views and yet should be placed so they will not shut off any pleasing outlook. Trees furnish shade and protection and add materially to the value of property. The original outlay of money is comparatively small and the ever-increasing pleasure and enhanced property value is great.



CATALPA BUNGEII AND A SUGGESTION FOR PLANTING

- A—Denotes trees which attain 50-70 ft. in height.
- B—Denotes trees which attain 20-40 ft. in height.
- C—Denotes trees which attain 8-15 ft. in height.

Catalpa, Bungeii (Umbrella Tree) (C)
 —Grafted on stems 6 to 8 ft. high, it makes an umbrella-shaped top without pruning; perfectly hardy. Leaves large, glossy, heart-shaped, deep green. One of the most unique trees; desirable for lawn, park and cemetery planting or for each side of a driveway.

Two-year heads, extra large, \$2.00 each

Catalpa Speciosa (B)—This tropical appearing tree has large, heart-shaped, downy leaves. The fragrant flowers which it bears abundantly in June are tinged with purple. Very hardy, grows rapidly and is straight and smooth. A fine tree for lawns and to border driveways. Valuable commercially.

8 to 10 ft., \$1.50 each



CATALPA SPECIOSA



PURPLE-LEAVED PLUM (PRUNUS
PISSARDI)

Plum, Purple-Leaved (*Prunus Pissardi*) (B)—Finest purple-leaved small tree. Young branches are very dark purple; leaves when young are lustrous crimson, changing to dark purple, and retain this beautiful tint until they drop. 4 to 5 ft., \$1.25 each



BECHTEL'S DOUBLE-FLOWERING CRAB

Bechtel's Double-Flowering Crab (C)—One of the most beautiful varieties of flowering crabs. Medium size, with large, double, fragrant flowers of a delicate pink in early spring. From a distance they have the appearance of roses. See page 24. 2 to 3 ft., \$1.00 each; 3 to 4 ft., \$1.50 each



JAPAN WEEPING ROSE-FLOWERED
CHERRY

Japan Weeping Rose-flowered Cherry (B)—Delicate pink flowers bloom in May and resemble miniature roses. The mass of bloom conceals the branches of this attractive and beautiful tree. 6 ft. stems, \$2.50 each



PAUL'S DOUBLE-FLOWERING THORN

Paul's Double-Flowering Thorn (C)—An excellent lawn specimen with spreading irregular branches. Blooming in May and June. Flowers a bright carmine color. Grows in any soil. 4 to 5 ft., \$2.50 each

HEALTHY TREES TAKE HOLD QUICKLY IN NEW LOCATIONS



SILVER-LEAVED MAPLES

Maple, Silver-Leaved or Soft Maple (A)—Beautiful ornamental tree, in great demand for street, lawn and park planting. Easy to transplant; fast grower, thrives equally well in drained or low, swampy locations.

8 to 10 ft. \$1.75 each; \$15.00 per 10
 10 to 12 ft. 2.00 each; 18.00 per 10

Maple, Norway (A)—The compact, vigorous nature of this tree renders it desirable for the street or lawn. The growth is fairly fast, the head massive and rounded, with broad, rich green foliage. This distinct foreign variety is highly recommended by the Shade Tree Commissioners for street and park planting.

8 to 10 ft. \$3.00 each
 10 to 12 ft. 3.50 each



WIER'S CUT-LEAVED MAPLE

Maple, Wier's Cut-Leaved (A)—One of the most remarkable and beautiful trees, with cut or dissected foliage. Growth rapid, shoots slender and drooping, giving it habit almost as graceful as cut-leaved Birch.

7 to 8 ft., \$2.00 each; \$17.50 per 10

Maple, Sugar or Rock (A)—Very popular American tree valuable for its production of sugar and wood. Very stately in form, rapid grower and has fine foliage. Valuable ornamental variety. Adapts itself to any soil, but is a good tree to plant in a stiff, clay soil.

8 to 10 ft., \$2.00 each; 10 to 12 ft., \$3.00 each



AVENUE OF NORWAY MAPLES

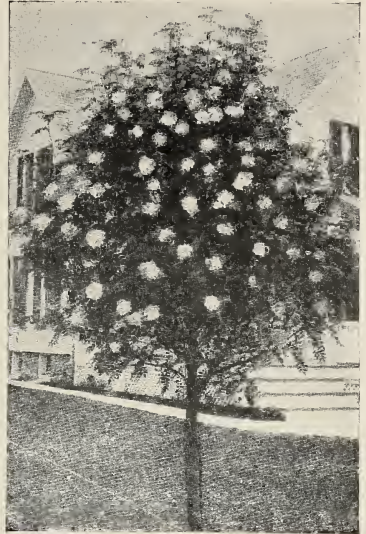


AMERICAN ELM, FINEST STREET AND SHADE TREE

Elm, American (A)—The Elms are so well known that it is unnecessary to refer to their beauty and value for ornamental planting. We grow the American on an extensive scale for street and park planting.

8 to 10 ft., \$2.00 each; \$17.50 per 10
 10 to 12 ft., 2.50 each; 24.00 per 10

Illustration shows three popular trees for Street and Lawn Planting.



MOUNTAIN ASH

Mountain Ash, American—Erect growing tree with graceful spreading branches; bark light gray. White flowers in early spring followed by clusters of light red berries remaining throughout the winter.

8 to 10 ft., \$2.50

Linden, American (B)—Unusual stately beauty. Foliage luxuriant and its curious cream colored flowers have a delightful fragrance. Blooms in July. Growth rapid and upright.

8 to 10 ft., \$2.50 each;
 \$23.00 per 10



AMERICAN ELM



NORWAY MAPLE



AMERICAN LINDEN

VENERABLE TREES ARE MONUMENTS TO



LOMBARDY POPLAR

Poplar, Lombardy (A)—Well known for its erect, rapid growth and commanding form. Desirable on large grounds, or along roads. Planted as a screen or for a wind-break.

8 to 10 ft., \$1.00 each; \$ 8.50 per 10
10 to 12 ft., 1.25 each; 10.00 per 10



TEA'S WEEPING MULBERRY

Mulberry, Tea's Weeping (C)—One of the finest, most graceful and satisfactory of weeping trees. Umbrella shaped head, with slender, willowy branches drooping to the ground. It has beautiful, glossy foliage, handsomely cut or divided into lobes. Perfectly hardy.

Two-year heads, extra large, \$3.00 each

Willow, Babylonica (A)—Well known, weeping variety; forms a large, round-headed, graceful tree. It does not require much attention and succeeds well in rather wet soil. Very desirable. 6 to 8 ft., \$1.75 each

BEAUTIFY YOUR GROUNDS

An attractive and harmonious planting of trees and shrubs greatly improves the appearance of a home, and incidentally a community. A few shrubs around the porch, at the corners and along the sides of a home give a wonderful effect. People desire to live in a neighborhood where the grounds are well kept. Everyone who beautifies his own grounds not only adds to his own pleasure, but helps create a love of beauty in others, in the community. Cultivate the community spirit; get your neighbors interested.



CAROLINA POPLAR

Poplar, Carolina (A)—Rapid grower. Large leaves, glossy, deep green. Valuable where shade is desired quickly. Useful as a screen or as windbreak.

8 to 10 ft., \$1.00 each; \$ 8.50 per 10
10 to 12 ft., 1.25 each; 10.00 per 10

Mr. Allen L. Wood, East Syracuse, N. Y.
Dear Sir:

The Nursery Stock arrived to-day in good condition.

I thank you for the interest you take, and I assure you, I will never hesitate to recommend you and your stock.

Some day I will give a larger order.

Respectfully
(Signed) J. J. MARTIN

WOOD'S QUALITY NUT TREES

New York State Grown Varieties



ENGLISH WALNUT

English Walnut—An exceedingly handsome tree for the lawn. It produces large crops of thin shelled, delicious Nuts which are always in demand at good prices. The English Walnut can be grown in the Eastern and Northern States, as well as in California and the South. There are several large orchards of English Walnuts in the vicinity of Rochester, N. Y., which produce good crops every year. We have three English Walnut trees on one of our farms, which are over 40 years old.

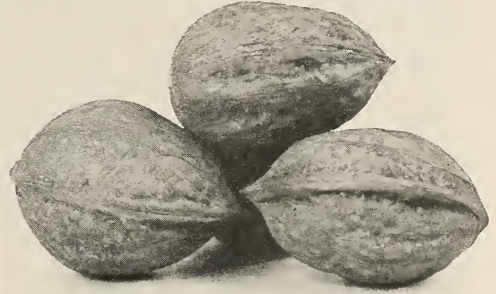
- 1½ to 2 ft., \$.50 each; 10 for \$ 4.50
- 2 to 3 ft., .85 each; 10 for 6.50
- 3 to 4 ft., 1.25 each; 10 for 11.00



BUTTERNUT

Butternut—Produces large, handsome, elongated Nuts with rich, sweet, oily ker-

nel; very nutritious. Cultivation increases the size of the Nuts. The tree grows rapidly and yields large crops in a few years.
4 to 5 ft., \$1.00 each; \$9.00 per 10



JAPAN WALNUTS PICKED FROM A SIX-YEAR OLD TREE

Japan Walnut—A choice improved variety, grows with great vigor, forming a handsome head without pruning; has withstood a temperature of 20 degrees below zero without injury. The shell is a little thicker than that of the English Walnut, which it resembles in a general way; kernels are meaty, delicate and can be removed entirely. Tree begins to bear when 2 or 3 years old.

- 2 to 3 ft., \$.60 each; \$5.00 per 10
- 3 to 4 ft., 1.00 each; 9.00 per 10



BLACK WALNUT

Black Walnut—Bears a heavy crop of large round Nuts of excellent quality. They are much relished and bring a good price on the market. The tree is a rapid grower, attaining a large size and majestic form; has beautiful foliage. Very valuable for its timber, which enters largely into the manufacture of fine furniture and cabinet ware.

- 5 to 6 ft., \$1.00 each; \$9.00 per 10



Pyramidal Arbor Vitae—One of the most beautiful varieties, very erect and regular in form, resembling the Irish Juniper; foliage a deep green color, well retained in winter; perfectly hardy. Unlike the Juniper it is easily transplanted and sure to give satisfaction. 3 ft. \$5.50 each; 3½ to 4 ft. \$6.00 each

EVERGREENS

With its stately appearance and leafy masses of color, ranging from the lightest to the deepest greens, soft toned grays and blues—the Evergreen surely stands out foremost as the "Aristocrat" of the shrub family.

As a front porch, foundation or corner planting—placed on the lawn, or along the driveway, there is nothing quite so dignified as a variety of these beautiful Evergreens tastefully planted around the home grounds. A strong background for the brilliant colors in summer, while in the snowy winter they are more appreciated as the absence of other colors tends to bring out their beauty of form and brighten up the surroundings when other landscape is barren.

We have listed some of the choicest varieties and they all have been transplanted several times.

In transplanting evergreens, so much depends upon the care of the planter in protecting roots from the air and sun, that we cannot guarantee them further than that delivery shall be in first-class condition.

In planting evergreens that are balled and burlaped, plant without removing the burlap, just cut the strings. Evergreens are hard to establish and this will give them less shock and enable them to get a new start in their own earth.



15 to 18 in.
Norway
Spruce

15-18 in.
Globe Arbor
Vitae

2 ft.
Chinese
Biota

2 to 3 ft.
Retinospora
Plumosa

15-18 in.
Compacta
Globe

2 to 3 ft.
Thuya Arbor
Vitae

This Special Selection of 6 Beautiful Evergreens, \$17.00



EVERGREEN PLANTING ON DRIVE

We have the Finest and Largest Collection of Choice Evergreens in the Country
They are dug with ball of earth, and roots wrapped in burlap.

ALL SPECIMEN PLANTS

Juniper Pfitzeriana—A beautiful new Evergreen of spreading, graceful habit, with silvery green color. Both the main stems and lateral shoots have a light, feathery appearance. Distinctive and charming.

2 to 3 ft., \$5.00 each

Juniper Swedish (Suecica)—Dwarf, compact habit; with bluish-green foliage. Forms a beautiful pyramidal tree. Holds its color in winter.

2 to 3 ft., \$4.00 each



SAVIN JUNIPER

Savin Juniper—A low spreading tree, with handsome, dark green foliage. Very hardy and suitable for lawn and around porches. Can be pruned to any desired shape.

2 ft., \$4.50 each

IRISH JUNIPER

A distinct and beautiful variety of erect, dense conical outline, resembling a pillar of green; very desirable.

2½ to 3 ft., \$4.00 each
3 to 4 ft., \$5.00 each

RED CEDAR

(Virginiana)

A well known American tree, with fine dense foliage varying in habit and color, the majority being formal and bluntly conical, others loose and irregular.

3 to 4 ft., \$5.00 each

Juniper Horizontalis (Trailing or Creeping Form)—Low and compact, making a dense mat. Soft blue color in summer, changing to a rich purple in late fall. Grows close to the ground. Spreading variety. Extremely hardy.

2 to 3 ft., \$5.00 each

Juniper Stricta—One of the leading dwarf varieties. Very dense, narrow and conical, having a fine, silvery glaucous color. Thrives in all parts of the country.

18 to 24", \$4.00 each



IRISH JUNIPER



MUGHO—DWARF MOUNTAIN PINE

Mugho — Dwarf Mountain pine. Low, dense and spreading in growth, usually broader than its height. One of the most attractive and valuable of our dwarf Evergreens. 18 to 24", \$5.00 each



COMPACTA GLOBE ARBOR VITAE

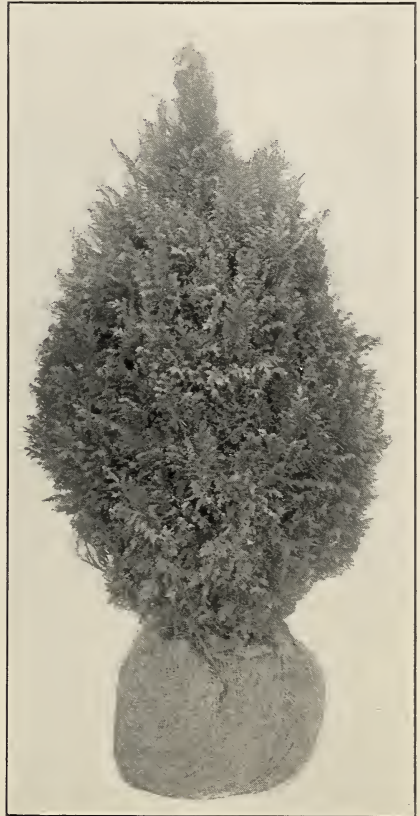
Globe Arbor Vitae—Forms a natural Evergreen globe or ball without any trimming; very pretty and hardy. 15 to 18", \$3.00 each

Colorado Blue Spruce—Wonderful ornamental tree, silvery blue luster, perfection in form and symmetry. Its hardy characteristics make it adaptable to nearly all climates. 15 to 18", \$4.00 each

Norway Spruce—Pyramidal in form, of rapid growth, hardy. Makes a beautiful ornament for the lawn when planted singly and when set out as a hedge or wind break cannot be beaten. Norway spruce will grow as high as 25 feet.

15 to 18", \$1.25 each
2 to 3 ft., \$2.50 each

Thuja American Arbor Vitae—Erect pyramidal habit; soft, dark green foliage. Dense from ground up. Rapid grower; hardy. Excellent specimen for planting in tubs. 3 ft., \$3.25 each



RETINOSPORA AUREA

Retinospora Aurea (Golden Japan Cypress)—One of the few really golden Evergreens. A plant of great beauty. Foliage soft, plume-like; close and compact habit. Striking and useful in many ways. 2 to 3 ft.\$7.00 each

Retinospora Plumosa — An exceedingly handsome Evergreen from Japan with feathery, light green foliage, more beautiful than a fern. Compact habit. 2 to 3 ft.\$7.00 each

CHINESE BIOTA

(Arbor-Vitae) — This beautiful, distinct pyramidal tree of a clean, bright, attractive green color, is one of the choicest evergreens for formal effect. It grows broad at the base and tapers to a point at the top. This variety is becoming more popular every year in landscape work, as it can be planted as single specimens on the lawn; for hedges; for screens or windbreaks, or in groups.

2 to 2½ ft. \$3.00 each
2½ to 3 ft. 4.00 each
3 to 3½ ft. 5.00 each

How to Plant Evergreens

When planting set evergreens in tub of water so ball is covered for ½ hour. Wet ground after planting, until like mud, then two pails of water each night for ten days.



CHINESE BIOTA

An interesting and stately Evergreen. Stands as a sentinel harmoniously merging the home and the lawn



EVERGREENS ADD DIGNITY TO THE HOME GROUNDS

A planting of Evergreens in Winter or Summer is always pleasing, adding that cosy cheerfulness to the home

SHRUBS

PLANTING shrubs increases the beauty and homelike atmosphere of the smallest cottage or the largest mansion. Pleasure for years to come and increased property values may be derived from careful selection and planting. Properly landscaping the exterior of a home is as important as furnishing and decorating the interior. It is possible to have a variety of shrubs which will bloom in profusion throughout the entire growing season. The bright foliage is a splendid decoration when shrubs are not in bloom.

Woodlawn Nurseries offer shrubs which are all strong, well-rooted stock transplanted from open ground. Small space is required for their perfect development and each year brings improvement in size and beauty.

If sent by Parcel Post add 5c per Shrub



ALTHEA, ROSE OF SHARON

Althea, or Rose of Sharon (D)—The Altheas are fine, free-growing, flowering shrubs and are easy to cultivate. Very desirable on account of blooming in August and September, when scarcely any other tree or shrub is in blossom. We have the following varieties.

Lady Stanley (Double Pink)

Ardens (Double Purple)

Boule de Feu (Double Red)

Jeanne d'Arc (Double White)

2 to 3 ft., 50c each; 5 for \$2.00

Tree Althea (D)—Same as bush, but grown in tree form, with single stem. Colors: Pink Purple, Red, White. 3 to 4 ft., \$1.00 each

Flowering Almond (E)—Flowering shrub, vigorous and beautiful; covered in May with double pink blossoms, like small Roses, before the leaves appear. 2 to 3 ft., 85c each

Aralia Pentaphylla (E)—Pretty Japanese Shrub. Branches long and slender, foliage bright green, flowers white. Grows rapidly.

2 to 3 ft., 50c each



EVERBLOOMING BUTTERFLY BUSH OR SUMMER LILAC

Butterfly Bush or Summer Lilac (E)—This beautiful shrub matures rapidly and produces beautiful lilac-colored flowers in profusion. Blossoms the entire summer; splendid for cutting. Should be cut back to ground every spring.

50c each; 10 for \$4.00

D—Attain height 9 to 12 feet; E—5 to 8 feet; F—2 to 4 feet.

OUR SHRUBS ARE HARDY AND VIGOROUS GROWERS

New Philadelphus Virginalis (E)—This magnificent new variety is the most beautiful and shapely of the mock oranges. The sweetly scented clusters of pure white blooms are double and unusually large. Foliage is good and of compact habit. Blossoms in June and continues until fall.

See page 25
3 to 4 ft., \$1.00 each

Syringa, Golden (F)—Golden-yellow foliage, keeping its color the entire season.

18 to 24", 75c each; 10 for \$6.00

Syringa Coronarius (E)—Well-known old fashioned shrub, with pure white, highly-scented flowers; blooms among the earliest of the family.

3 to 4 ft., 50c each

Syringa Grandiflorus (D)—Large showy white flowers, slightly fragrant. Branches somewhat straggling.

2 to 3 ft., 50c each; 10 for \$4.50



SNOWBERRY

Snowberry, White (E)—Bushy form, small pink flowers in summer; quantities of large, white, waxy, roundish berries in autumn that remain on the plant through part of the winter. Extra Large.

3 to 4 ft., 50c each; 10 for \$4.50
2 to 3 ft., 40c each; 10 for 3.75

Snowberry, Red (E)—Low growing, spreading, graceful habit; foliage attractive; noteworthy for the beauty of its clusters of red berries which hang on the bush all winter.

50c each; 10 for \$4.50

D—Attain height 9 to 12 feet;

RED-LEAVED JAPANESE BARBERRY

Such a worth-while and novel shrub is introduced only once in a life-time. Full exposure to the sun brings out and intensifies the color of the bronzy-red foliage. It resembles the Barberry Thunbergii (Japanese Barberry) in every respect except color.

	Each	Per 10	Per 100
2-Year	\$1.00	\$10.00	\$75.00

(See Back Cover for Colored Specimen)

Barberry Thunbergii—Used as a shrub as well as hedge. See description page 6.



HONEYSUCKLE ROSEA

Prices of Honeysuckles 50c each; 10 for \$4.00

Honeysuckle, Upright Rosea (E)—A beautiful shrub; vigorous; producing large, bright red flowers, striped with white.

3 to 4 ft.

Honeysuckle, Upright Pink (E)—Has flowers which contrast beautifully with the foliage. Looks very pretty planted with the white and red varieties.

3 to 4 ft.

Honeysuckle, Upright White (E)—A well known shrub of erect habit. Valuable for its handsome flowers and showy fruit. Delightfully fragrant; one spray will fill a room with its delicate perfume.

3 to 4 ft.

Honeysuckle Morrowi (E) (Japanese Bush Honeysuckle)—A spreading variety which blooms early, pure white flowers; followed by pretty red berries.

3 ft.

E—5 to 8 feet; F—2 to 4 feet.



DEUTZIA, GRACILIS

Deutzia, Gracilis (F)—Charming species of dwarf habit; flowers pure white. Fine for growing in front of taller shrubs.

2 to 3 ft., 50c each; 10 for \$4.50

Deutzia, Candida (E)—Pure white flowers, very double, which are so perfect in shape they are frequently used as cut flowers.

2 to 3 ft., 50c each; 10 for \$4.50

Deutzia, Pride of Rochester (E)—Very large, double, white flowers tinged with pink in May and June. It excels in size of flower, profuse bloom and vigorous growth. The best of the Deutzias. See page 24

3 ft., 50c each; 10 for \$4.00

Deutzia, Lemoinei (F)—Pure white flowers, borne in profusion on stout branches of upright growth. Dwarf habit, free flowering.

2 to 3 ft., 50c each; 10 for \$4.50

Deutzia, Crenata—A tall growing variety having very double pink flowers.

3 to 4 ft., 50c each; 10 for \$4.50

Quince, Japan (E)—Dark green foliage and showy, deep scarlet flowers of good size, produced singly or in masses. Much admired and often used for hedges.

2 to 3 ft., 75c each; 10 for \$6.50

Kerria, Japonica (F)—A green branched, slender, graceful shrub, with drooping branches, rich, dark yellow flowers which bloom all summer.

2 to 3 ft., 60c each; 10 for \$5.00

Cut Leaved Sumach (E)—A very striking plant, of moderate size, with deeply cut leaves, resembling fern leaves; dark green above and glaucous below, and turning to a rich red in autumn.

3 to 4 ft., 60c each; 10 for \$5.00

D—Attain height 9 to 12 feet; E—5 to 8 feet; F—2 to 4 feet.

LILACS

DURING recent years many new varieties of Lilacs have been introduced.

This list includes some of the finest varieties which are grown in the widely known Highland Park collection.

Purple Lilac (E)—The well known, old-fashioned Lilac; bluish purple flowers.

3 to 4 ft., 65c each; 10 for \$5.00

White Lilac (E)—Fragrant and free-flowering.

3 ft., 75c each; \$6.50 per ten

HIGHLAND PARK VARIETIES

French Budded Lilacs

Mad. Lemoine—Splendid, double, pure white flowers. Exceptionally fine variety.

18 to 24", \$1.00 each

Michael Buchner—Pale lilac flowers are very double. Fine variety; dwarf-growing, stocky.

18 to 24", \$1.00 each

President Grevy—Large double flowers; color beautiful shade of blue. See page 24

18 to 24", \$1.00 each

Lilac, Chas. X (E)—A rapid growing variety. Flower trusses large. Color reddish purple.

2 ft., \$1.00 each

Hugo Koster (C)—Single, large individual flowers, dark reddish-purple; one of the best Lilacs grown.

2 ft., \$1.00 each

Marie Legraye (C)—Large panicles of flowers. Valuable for forcing. One of the finest Lilacs.

2 ft., \$1.00 each

Charles Jolly (C)—Very dark reddish-purple; superb.

2 ft., \$1.00 each

Villosa—A species from Japan. Large branching panicles; flowers light purple in bud, white when open; fragrant. Especially valuable, as its flowers appear two weeks after those of other Lilacs.

3 to 4 ft., \$1.00 each

Eight Choice French Budded Lilacs
(One of each of the varieties listed above) \$7.00

Elder, Golden Leaved (E)—A handsome variety with golden-yellow foliage. White flowers. The berries are used for pies, jam and wine.

2 to 3 ft., 50c each; 10 for \$4.50

Shrubs flowering from early 'til late

IT is possible by making selections carefully to have shrubs blooming in profusion during every month of the growing season, from April until October.

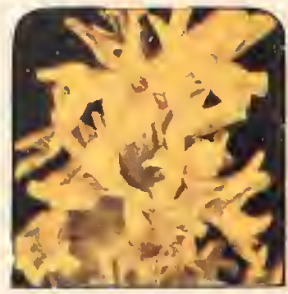
They beautify the surroundings, give lasting pleasure and satisfaction, and benefit the community.

The color of the foliage ranges from lighter to the darker shades of green; the blooms present a variety of colors, and there are differences in form and growth. Throughout the season constant changes are taking place.

A collection of varieties which will bloom at various times is offered below. Other collections are listed on pages 26 and 27.



Lilac, President Grevy
BLOOMS IN MAY
Description page 23



Forsythia, Fortunei
BLOOMS IN APRIL
Description page 27



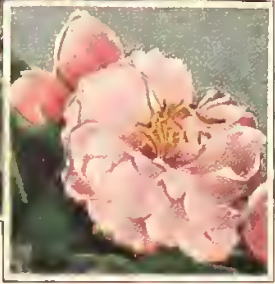
Weigela, Rosea
BLOOMS IN JUNE
Description page 26



Hydrangea, P. G.
BLOOMS IN AUG.-OCT.
Description page 27



Bechtel's Flowering Crab
BLOOMS IN MAY
Description page 11



Spirea, Anthony Waterer
BLOOMS IN JULY-AUG.
Description page 26

Early 'til Late Collection

7 Flowering Shrubs

Forsythia	Weigela Rosea
Spirea, A. W.	Spirea Van H.
Deutzia P. of R.	Hyd. Arbor.
	Hydrangea P. G.

Collection Price, \$3.00

Catalog Price \$3.50



Spirea, Van Houttei
BLOOMS IN MAY-JUNE
Description page 26



Deutzia, Pride of Rochester
BLOOMS IN MAY
Description page 23



Hydrangea, Arborescens
BLOOMS IN JUNE-AUG.
Description page 27



New Philadelphus Virginalis
BLOOMS IN MAY-OCT.
Description page 22



**SPIREA VAN HOUTTEI
BARBERRY THUNBERGII**

Any Low Growing Shrub May Be Planted in Front
of The Spirea Same as Barberry in Picture Above

SPIREAS

Spireas bloom with a riotous extravagance which makes them quite striking. Their individual style, color and habits of growth differ so markedly that a collection of varieties will insure bloom the entire season.

Spirea Van Houttei (E)—Without doubt the finest variety in the collection. At the flowering season in May and June the plant is covered with a mass of large, white flowers, presenting a beautiful appearance. Very hardy. One of the finest shrubs. See page 25.

Extra Large—3 to 4 ft., 50c;
\$4.50 per 10; \$40.00 per 100

2 to 3 ft., 40c; \$3.50 per 10; \$30.00 per 100

Spirea, Prunifolia (Bridal Wreath) (E)—A superb old-fashioned variety, with graceful, upright, slender branches covered with a wreath of white flowers in May.

2 to 3 ft., 60c each; 10 for \$5.00

Spirea Anthony Waterer (F)—A dwarf variety of great beauty. Its broad, flat heads of red flowers continue all summer.

15 to 18", 40c each; 10 for \$3.50

See page 24

Spirea, Aurea (Golden) (E)—Foliage green, bordered with rich golden yellow. In June the branches are covered with double white flowers. Very conspicuous.

3 to 4 ft., 40c each; 10 for \$3.50

Spirea, Billardi (E)—Rose-colored flowers in spikes; blooms nearly all summer.

3 to 4 ft., 50c each; 10 for \$4.00

Spirea, Bumalda (F)—A low growing bush with dark leaves. Blooms early in May. Flowers a delicate pink. Very desirable.

15 to 18", 40c each; 10 for \$3.50

D—Attain height 9 to 12 feet; E—5 to 8 feet; F—2 to 4 feet.

Wood's Special Shrub Collection

14 Choice Shrubs

- 2 Deutzia Pride of Rochester
- 2 Hydrangea P. G.
- 4 Barberry Thunbergii
- 2 Butterfly Bushes
- 4 Spirea Van Houttei

Catalogue Price \$6.60

Special Price \$5.50

Spirea Callosa Alba (F)—Valuable dwarf variety; bears white flowers all summer.

15 to 18", 40c each; 10 for \$3.50

Spirea Sorbifolia (E)—Strong growing variety from Siberia, leaves similar to Mountain Ash,—spikes of white flowers in July and August.

2 to 3 ft., 50c each; 10 for \$4.00

Spirea, Thunbergii (F)—Foliage, yellowish-green, changes in autumn to bright red and orange. Flowers pure white, borne in feathery masses in early spring.

2 to 3 ft., 60c each; 10 for \$5.00

Weigela Candida (E)—Flowers pure white and produced in great profusion in June, blossoms throughout the summer; valuable variety.

3 to 4 ft., 50c each; 10 for \$4.00

Weigela, Eva Rathke (F)—Flowers brilliant crimson. A very attractive variety. Almost a continuous bloomer.

18 to 24", 75c each; 10 for \$6.50

Weigela, Variegated (F)—Of dwarf habit; finely variegated foliage which lasts the entire season; contrasts nicely with its rose-colored flowers. One of the best.

18 to 24", 75c each; 10 for \$6.50



WEIGELA, ROSEA

Weigela, Rosea (E)—An elegant shrub, with fine rose-colored flowers; of erect, compact growth; blossoms in June.

3 to 4 ft., 50c each; 10 for \$4.00

See page 25

SPECIAL

Make your own collection
ANY TEN 50c SHRUBS
 of your own selection
\$4.50

Stephanandra Flexuosa (F)—Suitable for borders of other shrubs. Branches angular, even zig-zagged, with handsome deep lobed foliage which colors to purplish red; and paniced racemes of white flowers in June.

3 ft., 60c each; 10 for \$5.00

Cornus Stolonifera (E) (Red Osier Dogwood)—Bears white flowers and berries. Red branches are smooth, slender and spreading.

3 to 4 ft., 50c each; 10 for \$4.00

Cornus Elegantissima (Variegated Leaf) (E)—One of the finest shrubs, with beautifully variegated foliage.

2 to 3 ft., 65c each; 10 for \$5.50

Cornus Sibirica (E)—(Red-twigged Dogwood). With small clusters of white flowers; its berries and its dark red bark make it a very attractive shrub.

4 ft., 50c each; 10 for \$4.50

Cornus Florida (White Flowering Dogwood) (E)—White flowers in spring and rich crimson foliage in fall.

2 to 3 ft., 75c each



HYDRANGEA, ARBORESCENS

Hydrangea, Arborescens (Hills of Snow) (E)—The blooms, borne in clusters, are large; snow-white color. Foliage is finely finished. One of the finest Hydrangeas.

2 to 3 ft., 60c each; 10 for \$5.00

See page 25.

Hydrangea, P. G. (E)—One of the most popular hardy shrubs, and also one of the finest flowering varieties. The immense heads of bloom are cream-color in bud, pure white when fully expanded, changing to pink and bronze with age, and finally to brown when frosted. Blooms in September, when very few shrubs are in flower.

2 to 3 ft., 50c each; 10 for \$4.00

See page 25.

Hydrangea, P. G., Tree Form (E)—Same as bush, but grown in tree form with single stem.

3 ft., \$1.00; 4 to 5 ft., \$1.50

Snowball, Common (E)—A well known favorite shrub producing its snowy-white flowers in large balls in June.

2 to 3 ft., 75c each; 10 for \$6.50

Snowball, Japan (Viburnum Plicatum) (E)—Erect, compact shrub, covered with large balls of snow white flowers in June. Foliage dark green.

18 to 24", \$1.00 each; 10 for \$9.00

High Bush Cranberry (E)—Very ornamental. Its red berries resemble cranberries, which hang on until destroyed by frost.

2 to 3 ft., 75c each; 10 for \$6.50

E—5 to 8 feet; F—2 to 4 feet



AN EFFECTIVE WALK PLANTING
 OF HYDRANGEAS, P. G.

Forsythia Fortuneii (E)—Early and showy spring bloomer; flowers bright yellow, appearing before leaves. See page 24.

3 to 4 ft., 50c each; 10 for \$4.00

Forsythia Suspensa (E)—Flowers resemble Fortuneii; growth drooping.

3 to 4 ft., 50c each; 10 for \$4.00

Forsythia Viridissima (E)—Leaves and bark deep green, flowers deep yellow; very early in spring.

3 to 4 ft., 50c each; 10 for \$4.00

D—Attain height 9 to 12 feet;



Perennial and Bulbs

CHINESE LANTERN PLANT

Dense bushes growing about 2 feet high produce bright orange-scarlet, lantern-like fruits which may be cut for decorations that last all winter.

25c each; 5 for \$1.00

DIGITALIS OR FOXGLOVE

One of the most widely known and popular plants. The racemes are often two feet in length. Desirable for use in borders or as a background for lower growing plants.

25c each; 5 for \$1.00



DELPHINIUM
Description page 31



EDULIS SUPERBA PAEONY
Description page 32

Prize Collection
of
DAHLIAS

Cups, medals and ribbons have been awarded to even the most inexperienced planters who have shown the six varieties listed below. 6 Prize Dahlias (one of each)

\$3.00 Prepaid



CACTUS DAHLIAS

Countess of Lonsdale—Rich, salmon pink.
Marjorie Castleton—Very fine. Pink.
Golden Gate—One of the best yellow.
J. H. Jackson—Velvety black maroon.
Rene Cayeux—Rich geranium red.
35c each; 5 (one of each) for \$1.50.
10 Beautiful Mixed, not named, for \$1.00

Bianca—(Cactus) Beautiful rose-lilac with white shadings. 75c each

Delice—Large, clear rose-pink; free bloomer. One of the best. 25c each

Kalif—Large, pure scarlet; Cactus form, produced freely on long, stiff stems. Useful for cutting. 75c each

Patrick O'Mara—Soft and pleasing shade of orange-buff; very large. 7 to 9 inches in diameter. Vigorous grower with strong stems. 75c each

Pierrot—Unique and striking amber color; graceful, long, narrow tubular petals, usually showing white tips. 25c each

Dr. Tevis—Exhibition type. Salmon-rose suffused with old gold. Immense attractive flowers are borne on long stems. Free and continuous bloomer. 50c each

Dahlias continued

FANCY DAHLIAS

Six Prize Winning Varieties

Geisha—Brilliant scarlet and gold, yellow center. Showy and attractive. 75c each

Mina Burgle—Beautiful deep glowing crimson. Good for cut-flowers purpose; has long stems. 35c each

John Wanamaker—A beautiful violet-rose type, distinct and unique. 25c each

King of Autumn—A grand shade of autumn tints, on long stems; blooms freely. One of the best. 25c each

Maude Adams—Early, free bloomer; white with lavender center. 25c each

Rose—Rosy purple shade. Flowers erect on long stems. Popular. 25c each

DECORATIVE DAHLIAS

American Beauty—Gorgeous wine crimson. 25c each

Jeanne Charmet—Beautiful Lilac pink. 25c each

Grand Duchess Marie—Large; soft buff. 25c each

White Swan—Pure white; very popular. 25c each

Yellow Duke—Beautiful primrose yellow. 25c each

30c each; 5 (one of each) for \$1.25



LILY OF THE VALLEY

Lily of the Valley—Will thrive in any kind of soil and throw up its beautiful, modest, fragrant white bells.

10c each; 85c per ten



IRIS JAPAN

Flowers of the richest colors, ranging from white to purple,

with delicate markings and veinings.

25c each; 5 for \$1.00

Shasta Daisy—Large, pure white flowers. Hardy, blooms more abundantly each season and continues for several months. Strong, field-grown plants.

25c each; 5 for \$1.00



GAILLARDIA

Gaillardia—One of the most gorgeous of all flowering plants. A hard center of deep maroon is thickly bordered with petals of orange and yellow, ringed by circles of crimson, red and maroon.

25c each; 5 for \$1.00

Lychnis or Lamp Flower—Showy and brightly colored. Flowers are scarlet, crimson or orange-red; almost 2 inches across.

25c each; 5 for \$1.00

Pyrethrum Hybridum—Colors range from deep red through rose to pure white. Easy to grow in a sunny spot where soil is good. Blooms in June and if the first crop of flowers is removed continue through the summer. Fern-like foliage. 25c each; 5 for \$1.00

Delphinium, Chinese—Pretty variety with fine, feathery foliage and intense gentian-blue flowers in open panicles.

25c each; 5 for \$1.00

Delphinium (Larkspur)—The flowers are of a beautiful deep blue. Their long, showy spikes of flowers persist from June until frost and furnish the most satisfactory blue to any color scheme. Light blue and dark blue. See page 28.

25c each; 5 for \$1.00



YUCCA FILAMENTOSA, VARIEGATED

Yucca Filamentosa, Variegated — Long, drooping, wax-like flowers are supported on evergreen foliage 3 to 4 feet high. Deep green leaf has yellow margins making appearance novel and striking. Beautiful all year and excellent for winter landscaping. Extremely hardy. \$1.00 each

Blue Bird Flowers—Deep indigo-blue; borne abundantly in long, thick, compact spikes. July to September. Very pretty.

25c each; 5 for \$1.00

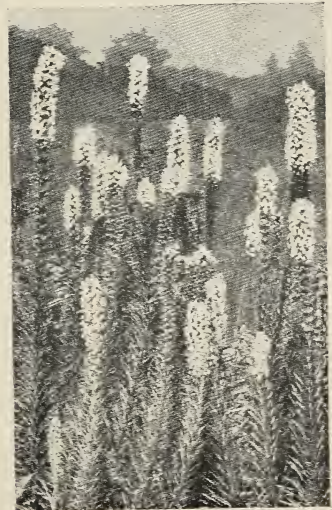
Red Flowering Giant Mallow—Large, intense colored flowers are vividly showy. Hardy. Foliage beautiful. 25c each; 5 for \$1.00



GOLDEN GLOW

Golden Glow (E)—Large, showy plant, blooms from early summer until frost. Flowers double, deep golden-yellow color.

20c each; 2 for 35c; 6 for \$1.00



LIATRIS

Liatriis (Blazing Star or Gay Feather)—Combines beauty and odd appearance. Blooms in midsummer, throwing up long, narrow spikes of rich purple flowers, which last very well. 25c each; 5 for \$1.00

WOOD'S QUALITY PHLOX

Two-year-old, hardy; bloom first year

Eculaireur—Purple, with light aureole.

Europa—White with a decided crimson-carmine eye. Flowers and trusses large.

Ferdinand Cortez—Deep crimson, overlaid coppery bronze towards the center.

Fraulein G. von Lassburg—Pure white.

General von Heutz—Orange scarlet.

Jules Sandeau—Large, fine, free-flowering, pure pink.

Rheinlander — Beautiful salmon pink, with flowers and trusses of immense size.

25c each; 7 (one of a kind) \$1.50

Hardy Chrysanthemums

Argenteuillais—Large, deep chestnut.

Golden Queen—Large, pure yellow.

Homestead—Large, rich pink.

Autumn Glow—Brilliant crimson flowers.

Early Snow—Pure white flowers.

Quinola — Golden-yellow. Small flowers.

Large 2-year plants, 25c each; 5 (one of a kind) for \$1.00; 10 for \$1.85



PHLOX, RHEINLANDER



HARDY CHRYSANTHEMUMS

PAEONIES

Two-year-old roots

Paeony—A noble flower almost rivaling the Rose in brilliancy of color and perfection of bloom. Hardy as an oak in the most severe climate. Each year adds to their size and beauty. Choice varieties. 50c each; 10 for \$4.50.

By Parcel Post add 5c per plant

Festiva Maxima—Large, snow-white, some petals crimson. Vigorous grower. Early.

Agida—Medium size, double, dark red.

Charlemagne—White; center tinted lilac; fragrant, late.

Couronne D'Or—Very double; yellowish. Grand cut-flower sort. Very late.

Edulis Superba—Large, early. Bright color mixed with lilac. Very free bloomer. See page 28

Henri Demay—Light red; large and full; fragrant, late.

Queen Victoria—Pure white, one of the best standard varieties for cut flowers.

Triumph de Lille—Shell-pink; fragrant and free bloomer.

CHOICE VARIETIES OF GLADIOLI

2 for 25c; 3 for 35c; 5 for 50c; 10 for \$1.00; 25 for \$2.00; 100 for \$8.00

If sent by Parcel Post add 8c per five
Crimson Glow—Large open flowers, of brilliant crimson. Wonderful display.

Mrs. Frank Pendleton—Bright rose pink on white ground; a giant blotch of richest carmine red on lower petals.

Mary Pickford — Flower, delicate creamy white; throat rich soft yellow.

Rose Ashe—Corinthian red shading into ashes of roses on outer edges.

Schwaben—Largest yellow Gladiolus.

E. J. Shaylor—Large flowers, deep rose pink.

Prince of Wales—Delicate salmon, rich wax-like flowers; blooms early.

White Giant—Tall, pure white flowers.

Campanula (Canterbury Bells)—Free blooming over long season; adapted to any garden soil. Good for cutting. Blue and white. See picture below.

25c each; 5 for \$1.00



WHITE GIANT AND ROSE ASHE

EXTRA CHOICE GLADIOLI

The Best Varieties Grown

Used by Florists for Weddings, Funerals,
Decorations, etc.

Prices—2 for 50c; 10 for \$2.00
\$15.00 per 100

Anna Eberius—Deep Rhodamine Purple shading into a very deep bordeaux center.

Evelyn Kirtland—The flowers of strong substance, are beautiful shade of rosy pink, darker at the edges, fading to shell-pink at the center with brilliant scarlet blotches on lower petals; the entire flower showing a glistening, sparkling lustre. Very tall spike. Extra fine form and color.

Golden Measure—Large blossoms of rich golden with no markings; strong grower with very large spike of blooms. Without doubt the best yellow ever introduced.

Herada—Blooms of immense size on tall straight spikes. Intense phlox color, shaded pure purple.

Liebesfeuer—A solid, brilliant scarlet. Many blooms open at one time. One of the finest and richest colored in existence.

Mrs. Dr. Norton—Finest pink and cream. Among the newer varieties shown at the American Gladiolus Society's show the last six seasons. Awarded the highest honors everywhere.



CAMPANULA OR CANTERBURY BELLS

STANDARD PEARS

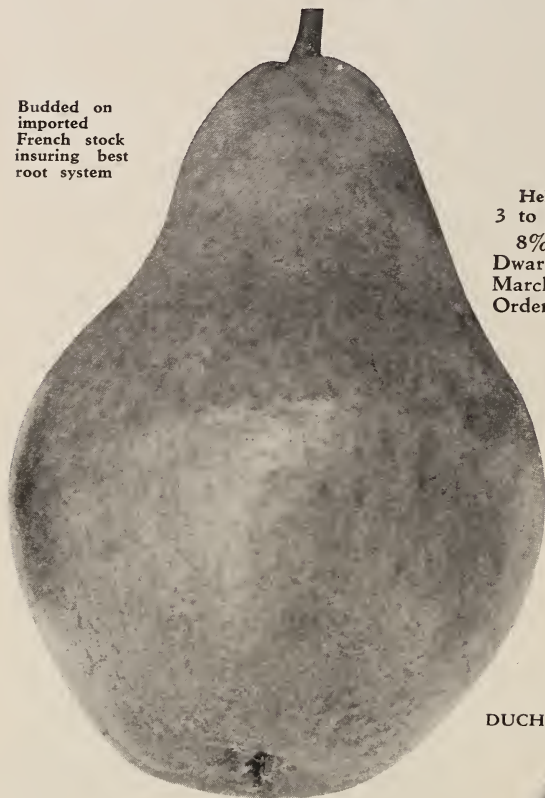
Prices of Standard Pear Trees

Height	Grade	Each	10	100
5 to 7 ft.	XXX	\$1.00	\$8.00	\$65.00
4 to 6 ft.	XX	.85	7.00	50.00
3 to 4 ft.	X	.75	6.00	40.00

Mail Size, 3 ft. 65c each; 3 for \$1.65, postpaid

8% Discount on all Cash Orders for Standard Pears received on or before March 26th. After that date 3% on all Cash Orders.

Budded on imported French stock insuring best root system



BARTLETT

Bartlett—Best and most popular of all pears for market and home use. Color clear yellow with a faint blush on exposed cheek. Fruit very large, thin skinned; flesh buttery and melting, rich musky flavor. Its splendid qualities render it a general favorite everywhere. Tree strong grower, bears young and abundantly. August and September.

See page 41

Seckel—Fruit small; skin rich yellowish brown, with a deep brownish red cheek. Very juicy; one of the richest and highest flavored pears known. September and October.

Clapp's Favorite—Very large; pale lemon-yellow color, with bright crimson cheek. Flesh finely grained, juicy, melting and buttery. Earlier than Bartlett. August and September.

Buerre D'Anjou—Great money maker. Fruit large, buttery and melting. Late. Keep until winter holidays.

Buerre Bosc—Excellent quality, juicy and melting. Color golden russet. October. Fine for home garden and brings higher prices than any other pear on the market.

Grade	Each	Ten
XXX	\$1.00	\$8.50
XX	.85	7.50
X	.75	6.50

Dwarf Pears

All Budded on Imported French Quince Stock

Largest Size—2 Years

Height	Grade	Each	10	100
3 to 4 ft.	XXX	\$1.00	\$8.00	\$65.00

8% Discount on all Cash Orders for Dwarf Pear Trees received on or before March 26th. After that date 3% on all Cash Orders.

Bartlett—Dwarf similar to standard variety.

Clapp's Favorite—Good dwarf variety.

Seckel—Valuable in standard and dwarf variety. Fruit same on either tree.

Duchess—Most popular of all dwarfs and most widely grown. Great money getter. Hardy and bears uniformly big crops. Fruits large; color dull greenish yellow, spotted with russet, flesh white, rich and of good quality.

DUCHESS



QUALITY PLUM TREES

Budded on French Plum Stock

Height	Grade	Each	10	100
5 to 7 ft.	XXX	\$0.85	\$7.50	\$55.00
4 to 6 ft.	XX	.75	6.50	45.00

Mail Size, 3 ft. 50c; 3 for \$1.25, Postpaid.

8% Discount on all Cash Orders for Plums received on or before March 26th. After that date 3% on Cash Orders.



BURBANK

Burbank—Resembles Abundance, except it is deeper in color and ripens later. Hardy. August.

APRICOT TREES

Two years	XXX	Grade	\$1.25	each
Two years	XX	Grade	1.00	each



GERMAN PRUNE

German Prune—Large purple plum; rich, juicy, fine. Good for drying and therefore commercially desirable. Great favorite.

Bradshaw—Very large, dark violet-red plum; juicy and good. Productive and valuable for market.

Abundance—One of the best Japan Plums. Fruit large, bright cherry-red; flesh yellow, firm, juicy.

Lombard—Medium, dark red; juicy. Wonderful early bearer, strong grower and hardy.



MOORPARK

Moorpark—One of the largest. Yellow with red cheek, firm, juicy and very productive. An old, dependable variety. August.

FRUIT TREE COMBINATION COLLECTION

7 WOOD'S QUALITY XXX GRADE TREES

- | | |
|-------------------------|-----------------|
| 1 Wagner Apple | 1 Elberta Peach |
| 1 Early Richmond Cherry | 1 Bartlett Pear |
| 1 Blk. Tartarian Cherry | 1 Orange Quince |
| 1 German Prune | |

Collection Price

\$5.25

Catalog Price, \$6.05

THESE ARE HEAVY BEARING VARIETIES

WOOD'S QUALITY PEACHES

THE Peach has been grown since the earliest times recorded in history and peach growing is at the present time a great industry. Since it has been known it has been popular for the fine eating qualities of the fruit; the attractive appearance of the tree from time it blooms until the fruit is picked; and for its adaptability to almost any soil except heavy clay. Many orchards are being planted in every section of the country. Peach trees come into bearing a few years after they are planted. For this reason profits are realized on Peach Trees sooner than on any other orchard fruit. Our trees are all budded from bearing orchards. They are free from disease and have extra fine roots.



HALE

Guaranteed True to Name

All Varieties Listed Are Freestone

PRICES OF PEACH TREES (Except otherwise noted)
All Grown from Tennessee Natural Pits free from insects

	Height	Grade	Each	10	100
Largest Size—1 Year—4 to 5 ft.		XXX	\$0.50	\$4.50	\$30.00
Medium Size—1 Year—3 to 4 ft.		XX	.40	3.50	20.00
Smaller Size—1 Year—2 to 3 ft.		X	.30	2.50	15.00

Mail Size, 3 ft., 30c each; 3 for 75c, Postage paid

8% Discount on all Cash Orders for Peach Trees received on or before March 26th. After that date 3% Discount on all Cash Orders.

Carman—Large, early white peach with deep blush; spicy flavor. Prolific bearer; good market variety.

Champion—Large white freestone peach; red-cheeked, sweet, rich, juicy. August.

Early Crawford—Large, rich yellow with red cheek; has all the characters that gratify the taste. One of the best in quality.

Late Crawford — Superb yellow peach; of large size and excellent quality; great bearer.

Elberta—Large, yellow, red-cheeked; juicy and highly flavored; valuable for garden. Greatest commercial peach.

Hale—The skin is deep crimson and without fuzz; flesh golden-yellow, firm and has delicious flavor. Good keeper and shipper.



Rochester—Earliest yellow peach; red-cheeked; juicy and delicious. Strong grower and early bearer.

**NEW WILMA PEACH
IS REPORTED AS ELBERTA RIVAL**

Geneva Station Says, Wilma Yellow-fleshed Variety Fills Long Felt Need.

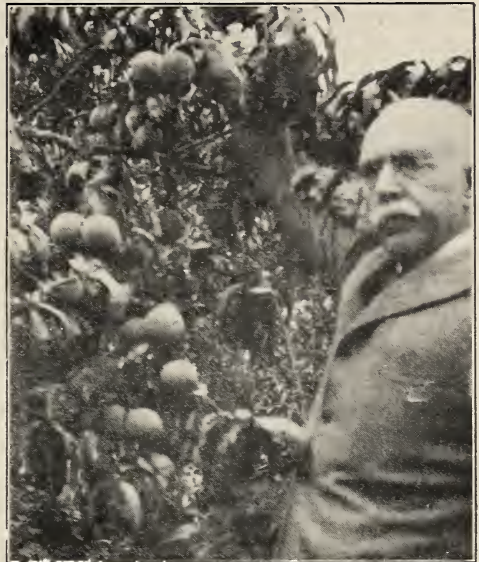
The new peach for which fruit growers of New York State have been looking has been discovered in the Wilma, a yellow-fleshed variety that will rival the favorite Elberta, say horticultural experts at the New York State Agricultural Experimental Station at Geneva. The new variety gains double favor by ripening a week following the Elberta season. Trees vigorous, productive, and hardy enough to withstand the coldest winter recorded in half a century in New York State.

The fruit is as large as Elberta, about the same color, and of better quality. It is destined to become a strong favorite in the peach industry of this state, the horticulturists say.

Our stock of Wilma is limited.

Grade	Each	Ten	Hundred
XXX	\$.60	\$5.00	\$35.00
XX	.50	4.00	25.00
X	.40	3.00	15.00

Mail Size, 3 ft., 40c each; 3 for \$1.00, post-paid.



A 16-YEAR OLD DR. WORCESTER PEACH TREE
This Photograph of the late Dr. Worcester and one of his famous Peach trees was taken about a month before the fruit was fully ripened.



BRANCH FROM A WILMA PEACH TREE

**"DR. WORCESTER"
"The 20th Century Peach"**

The DR. WORCESTER Peach is of a very large size, color is a beautiful golden yellow, overlaid with red. Flesh is yellow, firm and juicy, and the flavor, which is its chief merit, is rich and sweet. Skin is firm, making it a good shipper and keeper. Tree is hardy and a late bloomer, so late frosts seldom injure it. It is a healthy, vigorous grower and good bearer. These qualities make the DR. WORCESTER Peach a most valuable commercial variety.

Woodlawn Nurseries have the exclusive sale of this variety. Each tree or bundle of trees we sell bears a Special Guarantee Seal. Past experience has shown that it is wise to order this variety early because the demand is so great that it is necessary each year to refuse several hundred orders.

Grade	Each	Ten	Hundred
XXX	\$.60	\$5.00	\$35.00
XX	.50	4.00	25.00
X	.40	3.00	15.00

Mail Size, 3 ft., 40c each; 3 for \$1.00, post-paid.

8% Discount on all Cash Orders for Peaches received on or before March 26th. After that date 3% on Cash Orders.

CHERRIES

PRICES OF SOUR CHERRY TREES

All Budded on French Stock

	Height	Grade	Each	Ten	Hundred
Largest Size—2 Years—5 to 6 ft.		XXX	\$.85	\$7.50	\$50.00
Medium Size—2 Years—4 to 5 ft.		XX	.75	6.50	40.00
Smaller Size—2 Years—3 to 4 ft.		X	.50	4.00	20.00
Extra Large Size—3 Years		XXXX	1.10	9.00	

Mail Size, 3 ft. 50c each; 3 for \$1.25, postpaid

Write for prices on five hundred trees or more.

8% Discount on all Cash Orders for Cherry Trees received on or before March 26th. After that date 3% Discount on all Cash Orders.

SOUR CHERRIES

Early Richmond—One of the most valuable and popular Cherries for cooking purpose. A good old variety that yields marvelous crops in the garden. This hardy Cherry fruits on young trees soon after planting. Early Richmond is a great favorite throughout the West and Northwest, where only hardy varieties succeed. The tree is a free grower; hardy, healthy and very productive. Hundreds of tons of Early Richmond Cherries are now used in making Cherry wine. This is a new market for Sour Cherries which will keep the price of Cherries up. Some growers got ten to twelve cents per pound for their crop last year.

Montmorency—A beautiful, large, red sour Cherry. The fruit is clear, bright red and of good size. Flesh is of fine quality, sub-acid. The trees are clean growers and prolific bearers. No matter how unfavorable the season may be, Montmorency can be depended upon for a full crop. It is a good shipper, very attractive looking and always brings good prices. The canning factories use quantities of them and the demand is greater than the supply. Fruit ripens ten days later than Early Richmond.



ENGLISH MORELLO

English Morello—Best late sour Cherry. Medium sized, very dark red color, sometimes nearly black. The flesh is of good quality and it being acid in flavor makes it valuable for canning and preserving. Tree is a small grower with light limbs and trunk. Fruit ripens about two weeks later than Montmorency.



MONTMORENCY—BEST OF THE SOUR CHERRIES

SWEET CHERRIES

Sweet varieties of Cherries succeed best in sandy or gravelly soil, well drained. Avoid low or wet ground. The trees are very large and spreading.

PRICES OF SWEET CHERRY TREES

All Budded on French Stock

	Height	Grade	Each	Ten	Hundred
Largest Size—2 Years—	5 to 7 ft.	XXX	\$1.00	\$9.50	\$75.00
Medium Size—2 Years—	5 to 6 ft.	XX	.90	8.50	70.00
Smaller Size—2 Years—	4 to 5 ft.	X	.85	8.00	65.00
Extra Large Size—3 Years		XXXX	1.50	12.00	

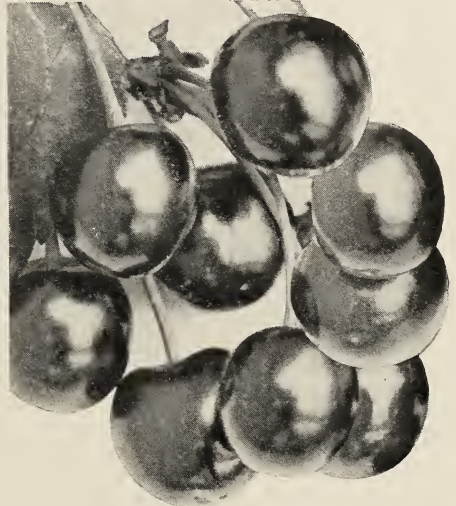
8% Discount on all Cash Orders for Sweet Cherry Trees received on or before March 26th. After that date 3% Discount on all Cash Orders.

Gov. Wood—One of the best cherries; fruit large, yellow, nearly covered with bright red. Flesh light, tender and juicy. "Has a taste all of its own." We like it—so will you.

Napoleon—Sometimes called Royal Ann. An ideal light-colored sweet cherry. Very attractive coloring with pale amber cheek, fruit large, heart-shaped; flesh firm, and of delightful flavor. Splendid shipper and fine for canning. Tree is a fine grower and immense bearer.

Schmidt's Bigarreau—Very large cherry, sweet, of especially good flavor. The flesh is dark, tender and very juicy. It is an excellent shipper and brings good money on the market. Late.

Windsor—The standard of excellency. The hardiest of the sweet varieties. Large, very dark red, with firm, tender, juicy flesh. Prolific bearer.



BLACK TARTARIAN

Black Tartarian—Early to middle of June. Fruit very large with small pit; heart-shaped, very dark, almost black; tender, juicy Sweet Cherry of surpassing quality, excellent for table use and canning; the tree is an upright, dense grower, remarkably vigorous and regular bearer of immense crops.

PROFIT FROM CHERRIES

A two-year-old Cherry Tree will bear a gallon of Cherries. A ten-year-old tree will bear from 100 to 200 lbs. One acre will grow 100 trees; figuring 150 lbs. to the tree this acre will produce 15,000 lbs. If sold at 7c per lb., will bring a return of \$1,050 per acre.

WHY NOT PLANT CHERRIES?



APPLES

WOOD'S RELIABLE APPLES—GUARANTEED TO BE TRUE TO NAME

BUDED ON IMPORTED FRENCH SEEDLINGS

PRICES OF ALL STANDARD VARIETIES

	Height	Grade	Each	10	100
Largest Size—2 Years—	5 to 7 ft.	XXX	\$.85	\$7.50	\$55.00
Medium Size—2 Years—	5 to 6 ft.	XX	.75	6.50	45.00
Smaller Size—2 Years—	4 to 5 ft.	X	.60	5.00	35.00
Extra Large Size—Three and four-year-old trees			1.00	9.00	

Mail Size, 3 ft., 50c each; 3 for \$1.25, postage paid.

8% Discount on all Cash Orders for Apple Trees received on or before March 26th. After that date 3% Discount on all Cash Orders.

SUMMER VARIETIES

Early Harvest—Medium size pale yellow.

Yellow Transparent — Earliest of all Apples. Color when ripe pale yellow; mild, yet of sprightly flavor; good quality and of decided merit. Tree bears abundantly at a very early age. Three year trees frequently produce fine fruit. It should be in every home garden. Season, July.

AUTUMN VARIETIES

Duchess of Oldenburg—Red striped; tender and juicy. The fruit brings a high price on the market.

Fameuse (Snow Apple)—One of the finest dessert fruits. Tender and delicious.

Wealthy—Medium, roundish; skin mostly covered with dark red; flesh white. A variety of great value on account of its hardness.

See colored page 41

WINTER VARIETIES

Delicious—Fruit large, nearly covered with brilliant dark red; flesh finely grained, crisp and melting, juicy with delightful aroma; highest quality. Good keeper and shipper.

Red Spy—Description page 42

Ohio Beauty—Description page 42

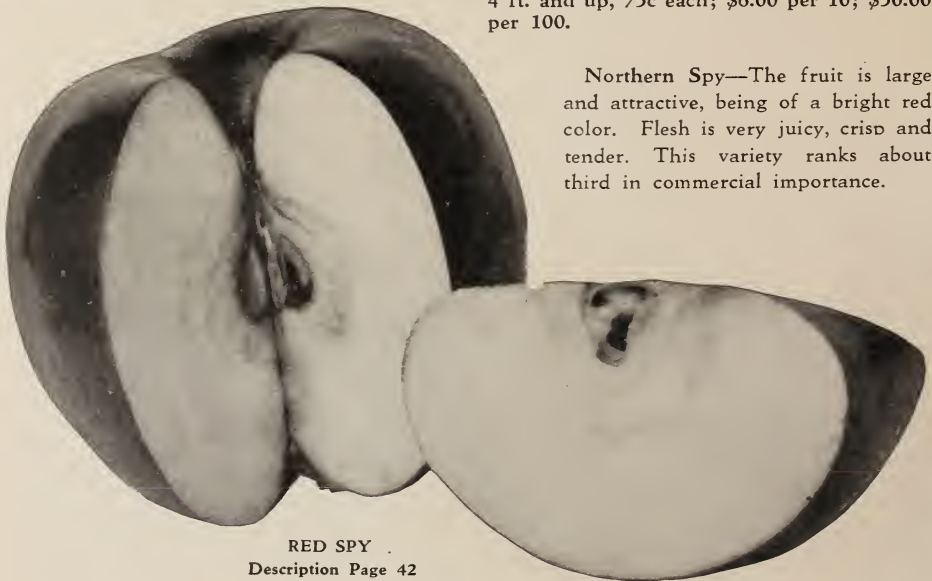
Cortland—Description page 42

McIntosh Red—A very attractive Apple, deep red color; uniform size. Flesh white, firm, crisp and tender. Season, October until May. Vigorous grower; bears within four or five years. McIntosh brings a good price on the market and makes a profitable investment for the fruit grower.

See colored plate page 41

We also offer extra large 1-year McIntosh, 4 ft. and up, 75c each; \$6.00 per 10; \$50.00 per 100.

Northern Spy—The fruit is large and attractive, being of a bright red color. Flesh is very juicy, crisp and tender. This variety ranks about third in commercial importance.



RED SPY

Description Page 42

WINTER
BANANA
APPLE

WEALTHY APPLE

McINTOSH

BARTLETT
PEAR

OHIO
BEAUTY
APPLE

RED SPY

*WOODS QUALITY STOCK
ALL XXX GRADE
CHOICE FRUIT TREE
COLLECTION*

6 Trees, 5 to 7 ft., for - - \$4.50

Catalog Price \$5.55

Collection Price - **\$4.50**

See descriptions pages 34,
40, 42 and 43

CHOICE APPLES

Outstanding Winter Varieties of Recent Origin

NEW RED SPY APPLE—Offshoot of Northern Spy, Grown at Geneva Experiment Station, Has Perfect Coloring

This new Red Spy, grown on the grounds of the New York State Agricultural Experiment Station at Geneva, is attracting much attention among the fruit growers. It differs from its parent, the Northern Spy, in color, being a solid bright red without stripes or splashes. It has the same good qualities as the Northern Spy in tree hardiness, healthfulness, productiveness and reliability in bearing. The trees are long-lived, nearly perfect orchard plants. Blooming very late they often escape the late frosts ruinous to other varieties. "Whoever grows Northern Spy, either for profit or pleasure, should try Red Spy," says the station horticulturist. Woodlawn Nurseries are the first to offer this apple.

See colored plate page 41.
Two-year Trees, \$1.00



NEW CORTLAND APPLE
Guaranteed true to name

Ohio Beauty—Exceptionally large; yellow or greenish blush, striped with red. Crisp, tender, juicy and sub-acid. Fine eating and cooking apple. December until April. We have exclusive sale of "OHIO BEAUTY." See colored plate on page 41.

brighter in color than the McIntosh. The flavor is richer and flesh is firmer and more juicy. It hangs well to the tree and can be picked very late, extending the storage season.

Winner of the Wilder Medal.

Ideally suited to New York and New England states.

PRICE, OHIO BEAUTY

Extra Large Size—\$1.25 each; \$10 per 10

Hgt.	Grade	Each	10	100
5 to 7 ft.	XXX	\$1.00	\$8.50	\$65.00
4 to 5 ft.	XX	.85	7.50	50.00
3 to 4 ft.	X	.65	5.00	30.00

Mail Size 65c each; 3 for \$1.75.

8% Discount on all Cash Orders received on or before March 26th. After that date 3% on Cash Orders.

	Height	Grade	Each	10	100
2-years	5-7 ft.	XXX	\$1.00	\$8.50	\$75.00
1-year	3½-4 ft.	XXX	.85	7.50	55.00

Mail Size, 1-year, \$1.00 each; 3 for \$2.50, postpaid

Conimicut, R. I.

Mr. Allen L. Wood: Oct. 18, 1926

About seven years ago I bought two Ohio Beauty Apple trees from your Nurseries. This year they bore for the first time. One was so loaded with apples that I had to put up two dozen sticks for supports. I got several barrels from one tree and the other was fairly well loaded.

(Signed) Oscar E. Sjolholm

WINTER VARIETIES—Continued

PRICES SAME AS APPLES LISTED ON PAGE 40

Baldwin—Leading commercial variety in the orchards of New York, Pennsylvania and Ohio. The standard fruit in the American markets and one of the leading Apples used in cold storage for the export trade. Large, red, winter Apple and very desirable on account of size, color and quality. Fruit keeps in common storage until April.

Grimes Golden—Beautiful, rich, golden-yellow Apple; flesh tender, juicy.

Jonathan—Medium size; brilliant red, highly and deliciously flavored. Hardy, productive, healthy and vigorous; bears young.

Rhode Island Greening—Highest quality. Ranks next in popularity to Baldwin.

North Western Greening—Fruit large, greenish-yellow, juicy and sub-acid. Productive.

Rome Beauty—Large, uniform sized Apple; flesh nearly white, fine-grained and juicy.

Tolman Sweet—Yellow with faint bluish cheek; valuable sweet winter baking apple.

Winter Banana—Large, pale yellow. Mild and sub-acid; flavored like banana.

See colored plate page 41.

Wagener—Superior bright red apple. Has fine texture, high flavor and excellent quality.

CRAB APPLE TREES

5 to 7 ft. 85c each; \$7.50 per 10



HYSLOP

Hyslop—Large, dark red, flesh yellow, sub-acid. Very productive and hardy. Excels for making fine jellies and preserves.



PRIZE WINNING BALDWINS
GROWN FROM WOODLAWN QUALITY STOCK

8% DISCOUNT on all Cash Orders received on or before March 26th. After that date 3% on Cash Orders.

DWARF APPLES

Budded on Paradise stock imported from France. They commence to bear fruit the second year after planting; especially desirable for village or city garden. We have the following varieties:

Baldwin	Early Harvest
Delicious	Red Astrachan
Duchess	R. I. Greening
Yellow Transparent	McIntosh

Prices of Dwarf Apples

Height	Grade	Each	10	100
4 to 5 ft.	XXX	\$.85	\$7.50	\$60.00
3 to 4 ft.	XX	.80	7.00	55.00

Mail Size, 3 ft. 80c each; 3 for \$2.00, postage paid.

QUINCE TREES

Budded on French Stock

Height	Grade	Each	10	100
4 to 5 ft.	XXX	\$1.00	\$9.00	\$80.00
3 to 4 ft.	XX	.90	8.50	70.00
2 to 3 ft.	X	.80	7.50	60.00
Ex. Large	XXXX	1.50	12.00	
Mail Size		.80	7.50	

Champion—Golden yellow color, bears abundantly. October.

Orange—More largely planted than any other variety. Large, golden-yellow. Fine flavor.

BERRIES

Prices of Black and Red Raspberries (except otherwise noted).

2 for 25c; \$1.00 per 10; \$1.25 per 25; \$3.00 per 100; \$25.00 per 1000. If sent by Parcel Post add 10c per 10; 20c per 25.

BLACK RASPBERRIES

Plum Farmer—Has been thoroughly tested in Western New York, where it is a great favorite for market and home use. Fruit very large, often measuring an inch in diameter. Brings the highest price on the market.

Black Diamond—One of the best for home and market use. For drying and evaporating it excels all others. Fruit large, sweet and excellent.



NEW GIANT BLACK RASPBERRIES

New Giant Black Raspberry—This recently developed variety is meeting with great favor among commercial growers, being considered by some even better than the popular Plum Farmer. Strong grower and hardy; fruit unusually large and firm. Long bearing season.

25c each; \$2.00 per 10; \$15.00 per 100

RED RASPBERRIES

St. Regis—A new acquisition to the Red Raspberry family. Fruit commences to ripen with the earliest and continues on young canes until October. Large, bright crimson; flesh firm and meaty. Good shipper and very prolific.

Columbian—Purple berry; of rich sprightly flavor. It is undoubtedly the best raspberry in cultivation for canning as it retains its color, form and flavor.

Herbert—Ripens before Cuthbert. Hardy; strong canes and healthy foliage. Berries bright red, sweet, and of large size; heavy bearer.

Wood's Improved Cuthbert—Large red berry; flesh firm and of rich flavor. We recommend it for either home use or field culture as it is one of the leaders on all markets.

BLACKBERRIES

Prices of Blackberry Plants

2 for 35c; \$1.25 per 10; \$1.50 per 25; \$4.00 per 100; \$35.00 per 1000

If by Parcel Post add 10c per 10

Eldorado—A valuable variety; medium size, jet black, melting, sweet and rich; hardy and very productive.

Blower—"The giant of all blackberries." An upright grower; very hardy and enormously productive. Commences to ripen about the middle of July and bears until frost.

ASPARAGUS

(TWO YEARS OLD)

Price 85c per 25; \$2.00 per 100; \$15.00 per 1000.

If by Parcel Post add 5c per 10

Barr's Mammoth—Robust and vigorous and throws large shoots which remain white above ground as long as they are fit for cutting.

Conover's Colossal—Tender and finely flavored.

Palmetto—An early and great yielder and very even and regular in growth. It has been tested both North and South and has proved entirely successful in every way.

WOOD'S GRAPE VINES

ARE TWO YEARS OLD, EXTRA STRONG

Every city and country garden should have a dozen or more Grape vines. They can be trained up the side of any building or along the garden fences, occupying but little room and furnishing an abundance of healthful fruit.

BEST STANDARD VINES

By Parcel Post add 5c each; 25c per 10

Agawam—Dark red. Large bunch and berry; sweet and aromatic; vigorous and productive.
20c each; \$1.75 per 10; \$15.00 per 100

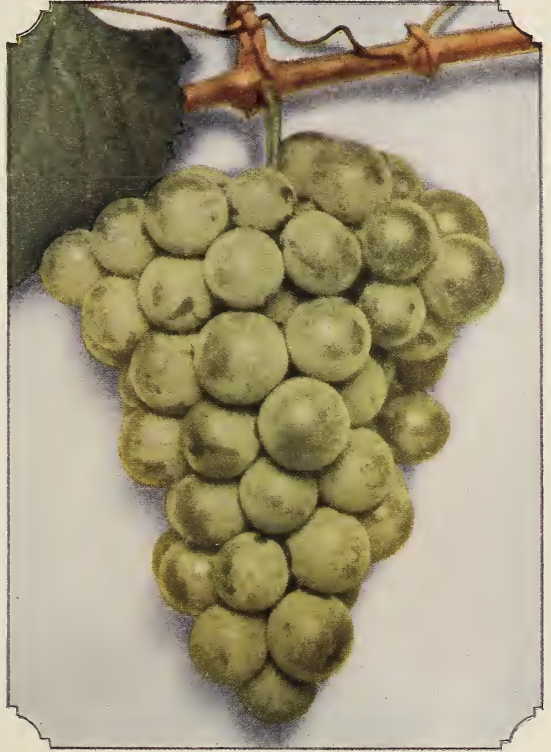
Concord—More Concord plants by vineyardists than all other varieties combined. Berries large, black, covered with a rich bloom.
15c each; \$1.40 per 10; \$10.00 per 100

Lucile—Bright red. Very hardy and vigorous. Bunches and berries medium to large. Very productive; early bearer; good shipper.
25c each; \$2.00 per 10; \$17.50 per 100

Moore's Early—Bunch large, berries black with a heavy blue bloom; quality better than the Concord.
20c each; \$1.75 per 10; \$15.00 per 100

Niagara—Berries white, larger than Concord, sweet to center. Skin thin but tough. Ripens before Concord.
20c each; \$1.75 per 10; \$15.00 per 100

Worden—Berries, black and larger than Concord. Ripens a few days earlier; superior in flavor.
20c each; \$1.75 per 10; \$15.00 per 100



NEW ONTARIO GRAPE

New Ontario Grape—They are of excellent flavor; juicy, tender, aromatic and sweet. The clusters are large and the berries are nearly as large as the Niagara.

The Ontario combines good vigorous habits of vine characteristic of the American Grape and the splendid quality of fruit found in European varieties. It is a prolific bearer and strong grower.

Ontario meets a long felt demand for a very early grape as it fruits the last of August, fully two weeks earlier than Niagara.

The New York State Experiment Station, where this grape originated, says of it, "Ontario is giving satisfaction wherever grown."

75c each; 10 for \$6.50

Home Vineyard Collection

10 2-year Grape Vines for **\$1.60**

2 Agawam
2 Concord

2 Lucile
2 Niagara

2 Worden

Wood's Strawberry Rhubarb

(PIE PLANT)

Two-Year Plants

15c each; \$1.25 per 10; \$10.00 per 100

IMPORTANT INFORMATION for CUSTOMERS

Be sure to read this page before ordering

OUR 51st CATALOG

In presenting our 51st Catalog, we assure all customers of prompt attention to orders and inquiries. We appreciate the confidence which our customers have placed in us and list only stock which we believe is desirable.

RELIABILITY

Fifty-one years of growing high grade Nursery Stock has placed us among the foremost Nurserymen in the country. Dun's, Bradstreet's or any bank or business house in Rochester will vouch for our reliability.

HOW TO ORDER

In making out your order, be particular to specify just what is wanted. Your name, postoffice and shipping point should be written plainly to avoid mistakes. If you are in doubt as to whether your stock should go forward by express or freight, you may leave it to us and we will use our best judgment.

TERMS

Cash with order, except in large orders, when satisfactory reference is given. We will ship trees and plants C. O. D. if 25% of the total amount of your order is sent in cash. The balance to be collected on delivery of stock.

HOW TO REMIT

Remittance should be made by check, postoffice money order, express money order, draft, or registered letter.

RATES

Five or more at ten rate.

Fifty or more at hundred rate.

Four hundred or more at thousand rate.

GRADING

We guarantee every Tree, Plant, etc., to be up to grade specified or better. All our Fruit Trees are graded by height and caliper.

PACKING

OUR PACKING CELLAR, covering over one acre of ground, and in which the sun or the wind cannot dry up the roots of stock, is where all our orders are packed. Care is given to the packing of each order, which enables us to get your stock to you in fresh condition.

Small orders are carefully tied up, the tops in flag to keep the trees from bruises and the roots in damp moss wrapped over with burlap to retain the moisture. Large orders are packed in paper lined boxes. We use wet moss for the roots and straw for the tops. The paper lining keeps the air and frost out and the moisture in.

SHIPPING

We do not charge for packing, boxing or delivering to freight offices or express companies. We do not prepay charges, unless goods are to be delivered to a prepaid station, as all our prices and quotations are FREE ON BOARD CARS AT OUR NURSERIES. If there is no agent at your station, and shipment has to be prepaid, notify us and we will prepay charges and bill you for same after shipment is made.

PARCEL POST

Small packages can be forwarded by parcel post. POSTAGE is required on orders to be sent by parcel post. SEND PAYMENT WITH ORDER. All orders are acknowledged immediately upon receipt.

SHIPPING SEASONS

The spring shipping season usually commences here about March 1st, and continues until about May 15th. Of course, the time of shipping your stock depends on your location. We commence making Southern shipments about January 1st. Our fall season commences about October 15th, and we continue to make shipments until the ground freezes. We advise spring planting for Berry plants and Peach trees.

SPECIAL DISCOUNT

ORDERING early insures the customer of receiving the things he wants. It enables us to plan on shipping stock before the spring rush season commences. Stock ordered early is reserved until proper time for shipment.

8% DISCOUNT on all Cash Orders received on or before March 26th, after that date 3% DISCOUNT on all Cash Orders.

New Varieties Commanding Attention



	Page
Red-Leaved Japanese Barberry	22
Rugosa Hybrid Roses	2
Giant Black Raspberries	44
Cortland Apple	42
Ontario Grape	45

Woodlawn Policies

Stock Guaranteed True to Name
Growing and Shipping the "Beautiful
and the Best"

This Catalog Is Our Only Salesman

The policy of employing no agents saves commissions and permits us to sell Wood's Quality Stock at moderate prices.

Deal direct with the grower and get good stock at a substantial saving of money.

The United States Department of Agriculture advises purchasing this way.

INDEX

	Page		Page
Apples, Choice	40-43	Pears, Standard and Dwarf	34
Apples, Crab	43	Perennials and Bulbs	28-33
Apples, Dwarf	43	Planting Suggestions	7
Apples, Standard	40-43	Plum Trees	35
Apricot, Trees	35	Quince Trees	43
Asparagus	44	Rhubarb	45
Berries	44	Roses, Climbing	1
Cherries, Sour	38	Roses, H. P.	4
Cherries, Sweet	39	Roses, H. T.	3
Evergreens	17-20	Roses, Rugosa	2
Fertilizer	16	Shrubs	21-27
Grape Vines	45	Shrub Collections	26-27
Grass Seed Mixture	16	Trees, Evergreen	17-20
Hedge Plants	6	Trees, Fruit	34-43
Information	46	Trees, Nut	15
Nut Trees	15	Trees, Ornamental	10-14
Ornamental Trees	10-14	Vines, Hardy	8-9
Peaches	36-37	Vines, Grape	45

CERTIFICATE—No. 18

**STATE OF NEW YORK
DEPARTMENT OF FARMS AND MARKETS**

BERNE A. PYRKE, Commissioner

CERTIFICATE OF INSPECTION OF NURSERY STOCK

THIS IS TO CERTIFY that the nursery stock of Allen L. Wood of Rochester, County of Monroe, State of New York, was duly examined in compliance with the provisions of Article 14 of the Farms and Markets Law, and was found to be apparently free from any contagious or infectious disease or diseases, or the San Jose scale or other dangerously injurious insect pest or pests. This certificate expires September 1, 1927.

Dated, Albany, N. Y., September 1, 1926.

BERNE A. PYRKE, Commissioner.

By GEORGE G. ATWOOD,
Director, Bureau of Plant Industry.



New Red-leaved Japanese Barberry

THIS new Barberry is very unusual and different from any shrub developed in many years. Its foliage is a rich, lustrous, bronzy-red similar to the red-leaved Japanese maple. It resembles the Barberry Thunbergii in all respects except color. The possibilities for its use are even greater because it forms striking color contrasts with other foliage. Full exposure to the sun is all that is necessary to make the coloring become more intense and brilliant as the summer advances. This is the first year this distinctive and attractive shrub is offered.

Two-Year-Old Plants, \$1.00 each; \$10.00 per dozen; \$75.00 per 100