

● T860

.C1W93



T 860  
.C1 W93  
Copy 1

T860  
©1w93



WORLD'S FAIR

LOUISIANA PURCHASE

ST. LOUIS

1904

Newcomb Publishing Co.

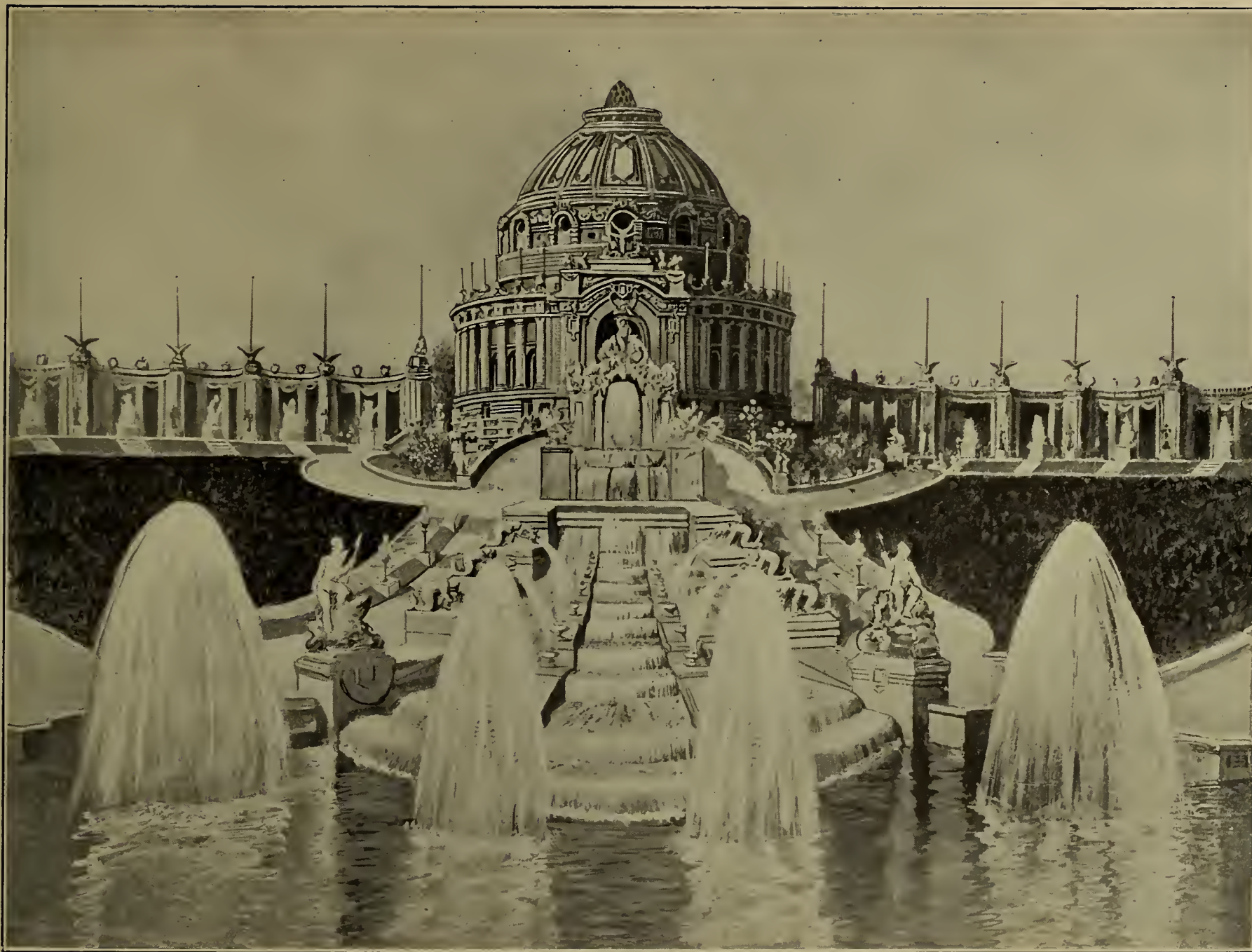
9-15 Murray St., New York.

U. S. A.

Copyright, 1904, by T. Newcomb and W. G. Smith.

K





## CASCADES, FESTIVAL HALL AND COLONNADE OF STATES.

mit, flanked on either side by the Colonnade of States. The main Cascade is 290 feet long, down which will flow 45,000 gallons of crystal, clear water to the grand basin, in a series of fourteen falls. At night these will be illuminated, producing brilliant color effects. Festival Hall has a seating capacity of 3,500 persons. The top of the great dome is 260 feet high; the auditorium is 112 feet high, and the proscenium arch of the stage has a span of 94 feet, one of the largest in the world. The organ is the largest ever constructed, containing 140 stops and 10,059 pipes. In this building the grand orchestral and vocal concerts will be held. The Colonnades extend on each side of Festival Hall, and are divided into fourteen bays, in front of which have been arranged fourteen statues symbolical of the States and Territories which have been carved from the Louisiana Territory.

The most beautiful feature of the Exhibition will be the Cascades, with Festival Hall at their summit.



PART OF COLONNADE OF STATES.



PART OF COLONNADE OF STATES AND A GLIMPSE BEYOND.



## LOOKING DOWN THE GRAND BASIN.

This photograph is taken from the head of the Cascades, directly in front of Festival Hall. On these waters, which extend to the right and left of the picture in several lagoons, ply the gondolas, carrying passengers to those buildings accessible by water. In the center of the photograph is seen the beautiful Louisiana Purchase Monument, and beyond it a dim view of the Pike. To the right is the Palace of Manufactures, and on the left of the picture is the Palace of Varied Industries.





**PALACE OF MANUFACTURES—WEST SIDE.**

Has a frontage of 1,200 feet, with a depth of 525 feet, and cost \$719,000. The principal exhibits are cutlery, clocks, watches, jewelry, brushes, leather goods, toys, carving, mosaic decorations, household and office furniture, stained glass, stationery, productions in marble, bronze, cast and wrought iron, upholstery, window glass, table glass, apparatus for heating, ventilating, etc., etc.



PALACE OF MANUFACTURES—NORTHEAST VIEW.



**PALACE OF VARIED INDUSTRIES—SOUTHEAST VIEW.**

It has the same proportions as the Palace of Manufactures, 525 by 1,200 feet, covering about fourteen acres. Van Brunt & Howe, of Kansas City, Mo., are the architects. Cost of the building, \$604,000. There is a colonnade of massive columns running around all sides of the building, which, with its magnificent entrances, makes it one of the "show" Palaces of the Exposition.



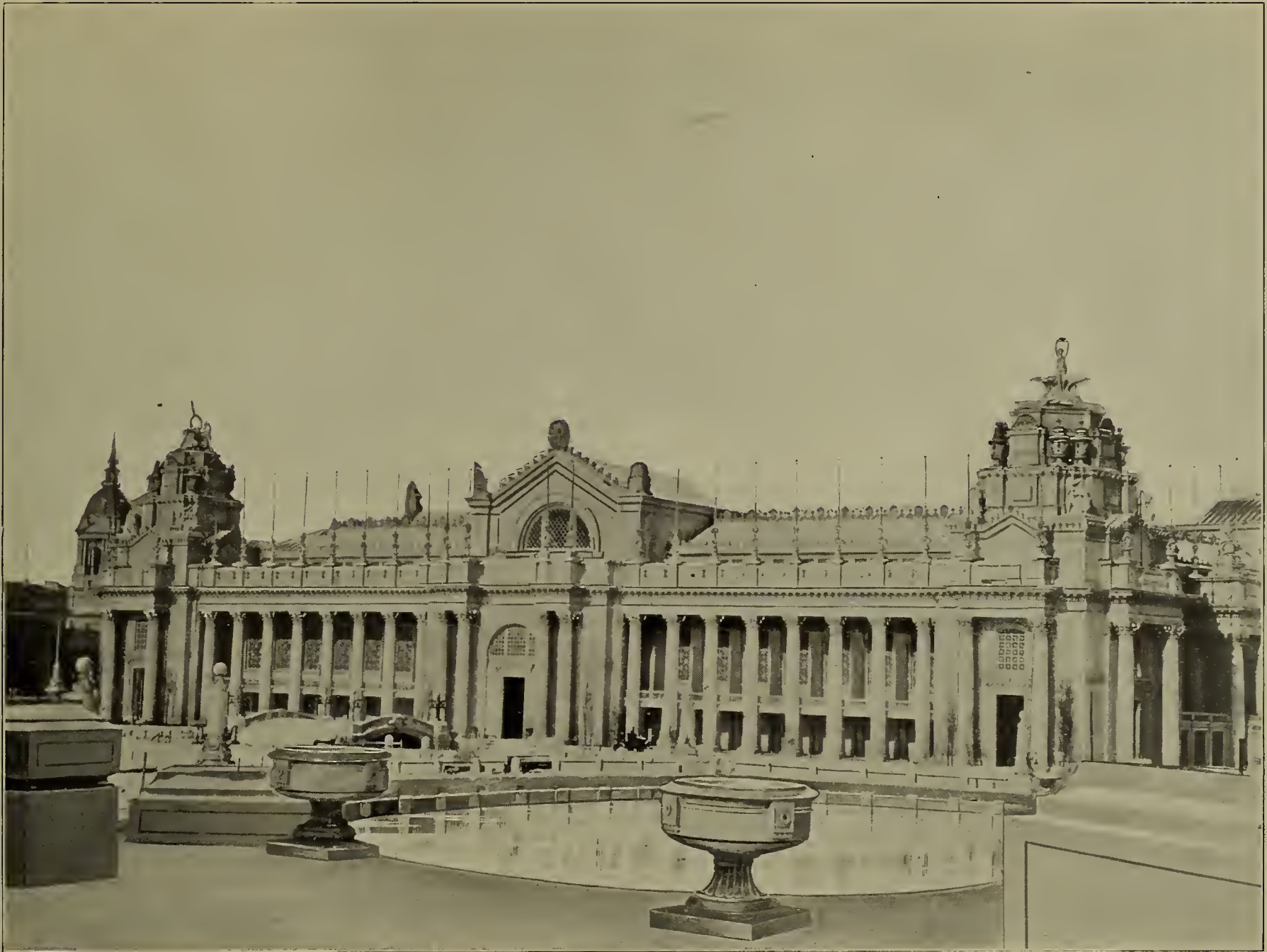
PALACE OF VARIED INDUSTRIES—EAST SIDE.



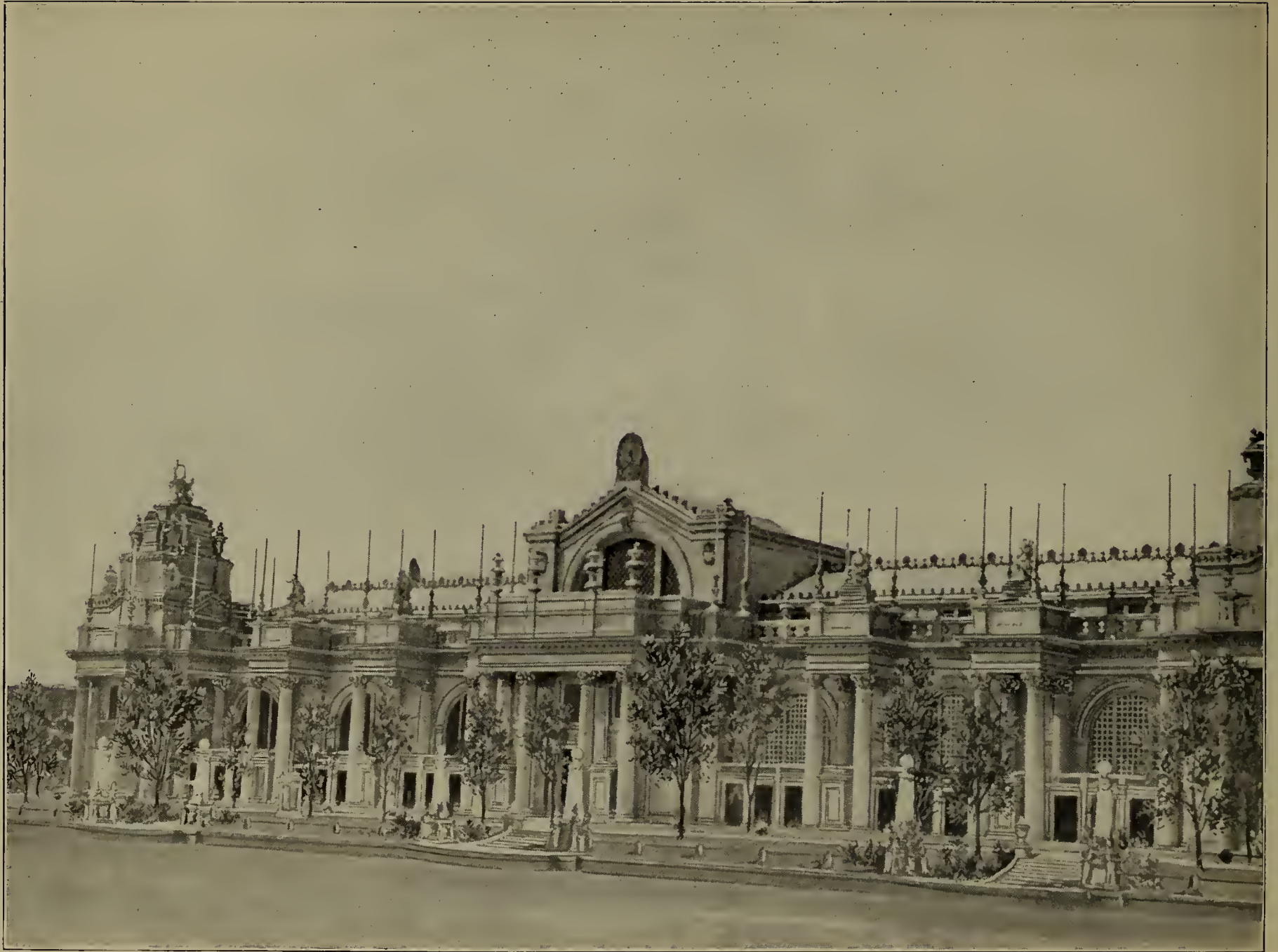
**PALACE OF VARIED INDUSTRIES—SOUTHERN ENTRANCE.** The beauty of this entrance is unsurpassed in the Exposition. This photograph is a particularly fine one of it, catching, as it has, the light and shade effects, and, taken at just the proper distance, shows the dome which crowns the building.



PALACE OF VARIED INDUSTRIES—SOUTHEAST CORNER.



**PALACE OF ELECTRICITY.** The dimensions of this building are 750 by 525 feet; cost, \$399,940. In the building will be exhibited: Machines for generating and using electricity, motors, generators, appliances and methods for the distribution of electric energy, conduits, wire, switches, insulating material, circuit breakers, electric lighting, telegraphy and telephony, X-ray apparatus, electricity as used in surgery, dentistry, in mines for heating, cooking, welding of metals, etc., etc. In fact, everything that pertains to electricity, up to date, will be on view.



PALACE OF ELECTRICITY—EAST SIDE.





PALACE OF ELECTRICITY—DOORWAY.



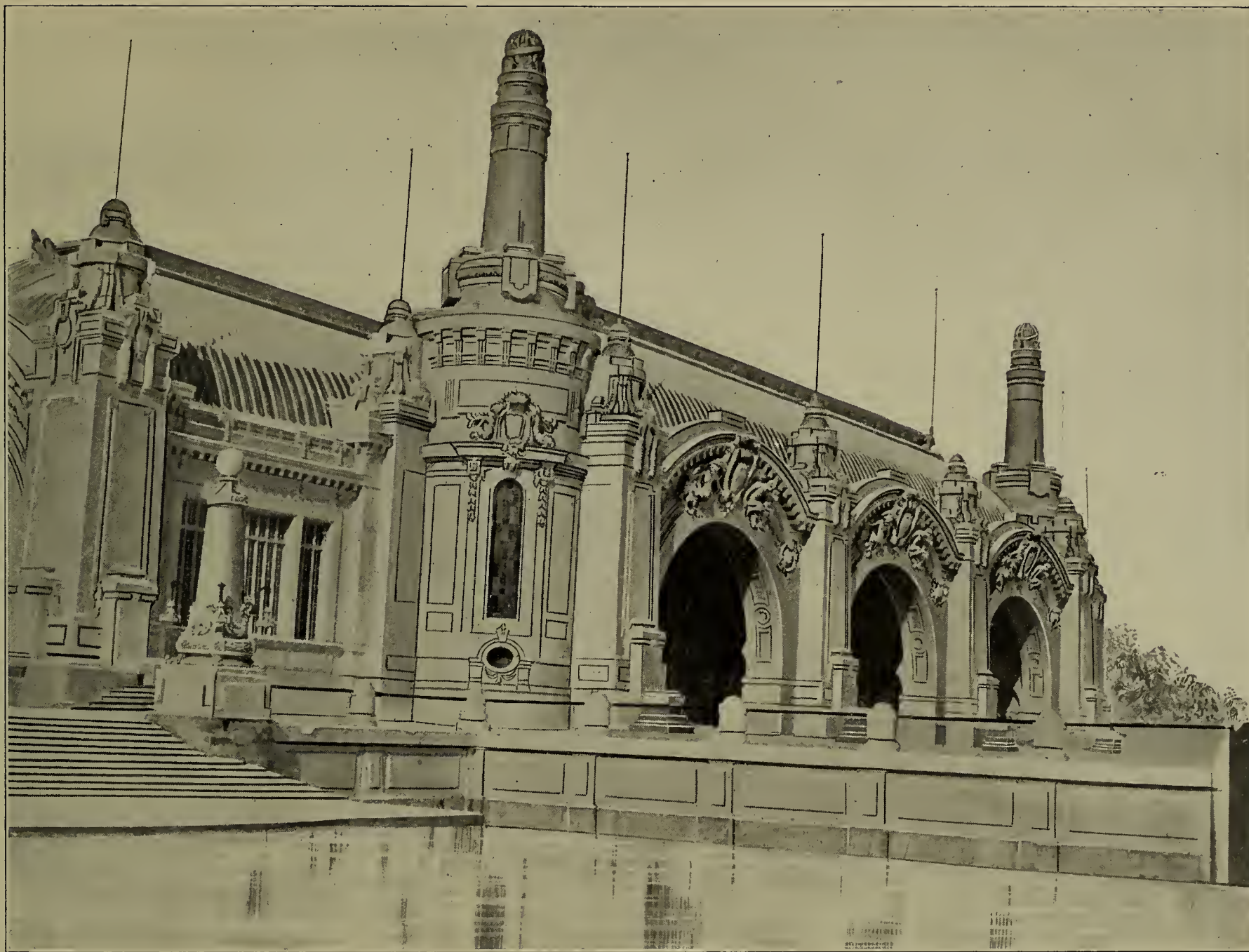
**PALACE OF LIBERAL ARTS—WEST FRONT.** The main facade is 750 feet long and 525 feet wide; cost, \$475,000. The machinery and equipment used in various printing processes, photography, and book making will be here exhibited; also the manufacture of coins and metals, mathematical and scientific instruments, musical instruments, and those used in civil, military and architectural engineering. A novel exhibit will be the printing of an eight-page newspaper daily, giving the news of the day, particularly the happenings at the Exposition, on one of the latest newspaper printing presses, where 240 eight-page papers will be turned out each minute.



PALACE OF LIBERAL ARTS—SOUTHWEST FRONT.



PALACE OF LIBERAL ARTS—MAIN ENTRANCE.



**PALACE OF TRANSPORTATION.** This building is located at the northwest corner of the grounds; is 525 by 1,300 feet in size, and cost \$696,000. There are fourteen permanent railroad tracks, besides 270,000 feet of exhibition space, in the building. Every known means of conveyance will be found here, from the old-time stage coach and the first steam engine to the latest contrivance in automobiles, steam and electric engines, motor cycles, and air ships. Full trains of cars, with the fastest engines known, will be exhibited. The latest designs in street cars and those used for underground travel will be exhibited; also models of the fastest ocean steamships and river craft. Every description of saddlery and harness will be on exhibition.



PALACE OF TRANSPORTATION—SOUTH FRONT.



**PALACE OF MACHINERY.** Size, 525 by 1,000 feet, and cost \$500,000. The towers, of which there are seven, are the highest on the Exposition grounds, the two located at the main entrance being 285 feet high. All will be illuminated at night with many thousand electric bulbs, and powerful searchlights will play nightly from the top of each tower. The exhibits will include all manner of machinery and tools; steam, gas, petroleum, alcohol, heated air, and water pressure engines, windmills and wind motors, fire engines, and apparatus.



PALACE OF MACHINERY—EAST FRONT.





PALACE OF MACHINERY—DOORWAY.



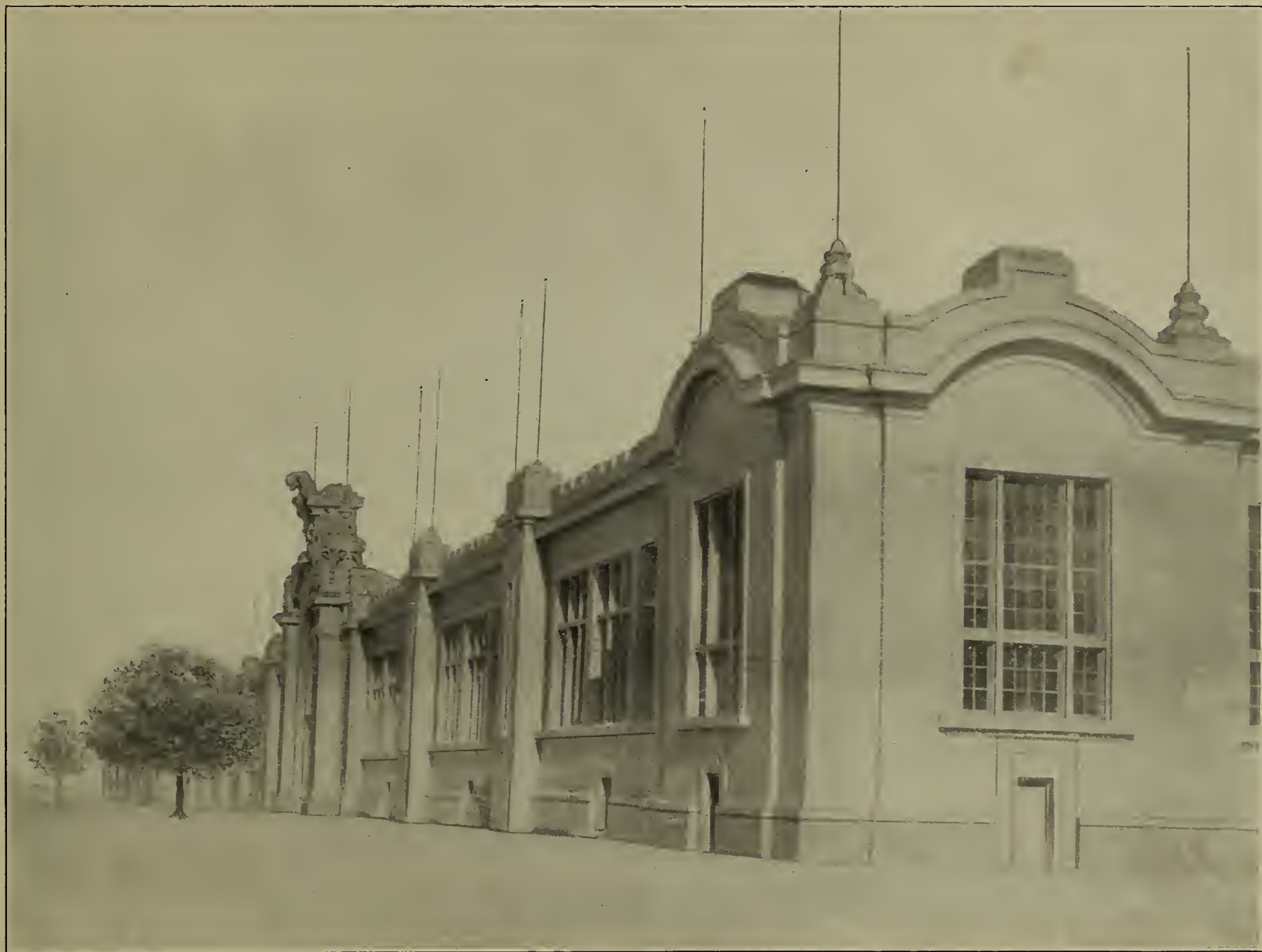
**PALACE OF EDUCATION AND SOCIAL ECONOMY.** Adjoining the Palace of Manufactures on the east of the main lagoon. This building, as the photograph shows, is of pure Corinthian architecture. Size, 525 by 750 feet; cost, \$329,000. Everything relating to educational work—models, methods, and appliances—from the college and university down through the various grades to the kindergarten, will be illustrated and exhibited, including industrial and trade schools, Indian, deaf and dumb schools; social and economic conditions, State regulation of labor, organization of industrial workers, public health, municipal improvement, and all the general betterment movements of the times.



PALACE OF EDUCATION AND SOCIAL ECONOMY—EAST VIEW.



**PALACE OF AGRICULTURE.** The largest building on the grounds; lies just east of the Philippines, on what is known as Skinker road. Its size is 500 by 1,600 feet, covering twenty acres of ground; cost, \$600,000. Agricultural implements and farm machinery, dairies and their fittings, flour mills and methods employed in the preparation of food will be exhibited; also seeds, eggs, cheese, butter, vegetables, fruits, wines, as well as cereals of all descriptions.



PALACE OF AGRICULTURE—SOUTHWEST VIEW.



## PALACE OF HORTICULTURE.

Lies just south of the Palace of Agriculture. Size, 300 by 750 feet; cost, \$228,000. On exhibition will be all the newest methods of wine-making, floriculture, ornamenting gardens, greenhouses and heating apparatus for same; landscape architecture, aquariums, fruit culture, trees and shrubs, and implements used in all the above.



**PALACE OF PHYSICAL CULTURE.** In connection with this building is an immense hippodrome, covering several acres, in which the athletes from all over the world will take part in various contests of skill and endurance for prizes. The world's Olympic games, originally announced to be held at Chicago, have been transferred here by special act of the International Committee, and will surpass anything of the kind ever witnessed in the world, not excepting those held in the Amphitheatre at Olympia, Greece, under the auspices of the Roman Emperors.



**PALACE OF FISHERIES.** Everything pertaining to fresh and salt water fish—their food, culture, diseases—will be on view. Equipment, nets, boats, implements, and paraphernalia for the catching of fish, and apparatus for the curing and canning of fish, will here be found in endless variety. There will be a large display of salt and fresh water pearls. Fifty polished plate-glass tanks, huge in size, will contain many thousand live specimens.





**PALACE OF MINES AND METALLURGY.** Located south of Palace of Liberal Arts and west of Government Building, is devoted to the display of ores, metals, gems, clays, and the many mine products. There will be a very interesting display of machinery in motion, such as used in mining and smelting. Size, 525 by 750 feet; cost, \$533,000.



**PALACE OF FINE ARTS—DOORWAY.** This is the only permanent building on the grounds, and is located just back of Festival Hall, on the top of the hill. It is constructed of brick and stone, and cost \$1,000,000. All of the exhibits are installed on one floor, which is an innovation much to be commended. The four corners of the world have contributed, and housed within the stone walls of this building, lighted by the many large windows in the roof, will be exhibited the most glorious display of the world's art, both in painting and sculpture, ever gathered together in one place.



**ADMINISTRATION BUILDINGS.** These buildings, or rather group of buildings, are built of red granite, with limestone ornamentation, and cost about \$1,500,000. They are used exclusively by the officers and the clerical force attached to the administration of affairs of the Exposition. There is a magnificent library in the building.



**COMMENCEMENT OF THE GRAND BASIN.** This view shows one of the landing places for the gondolas, with a view of the Palace of Varied Industries. All of the main Exposition buildings will be connected by water, and one of the pleasantest ways of visiting the different exhibits will be by gondola. An American Venice.



## THE LOUISIANA PURCHASE MONUMENT.

The shaft rises 125 feet from the ground, and is crowned with the figure of "Peace, calling the nations of the earth together in peaceful competition." E. L. Masqueray is the architect. The monument stands between the Palace of Varied Industries and the Palace of Manufactures.



VIEW DOWN A LAGOON.

This photograph shows the lagoon crossed by bridges. On the left is the Palace of Varied Industries, beyond which is seen the Louisiana Purchase Monument and, still further on, the Palace of Manufactures.



**PHILIPPINES—THE WALLED CITY.**

At the extreme western end of the Exposition grounds is located the Philippine exhibit, covering about forty acres. Much of this space is devoted to the waterways, which are used to give as near as possible the Philippine atmosphere to the picture. The above photograph shows the walled city of Manila. This is a reproduction in staff of the heavy fortifications of Manila.



PHILIPPINES—A MANILA BUILDING.





PHILIPPINES—A THATCHED HOUSE.



JERUSALEM—JAFFA GATE.

Just at the west of the Palace of Fine Arts and the Cascades is located the eleven acres devoted to Jerusalem. In the reproduction no expense has been spared in gathering actual material historically correct.



JERUSALEM—ANOTHER VIEW.



## GRANT'S CABIN.

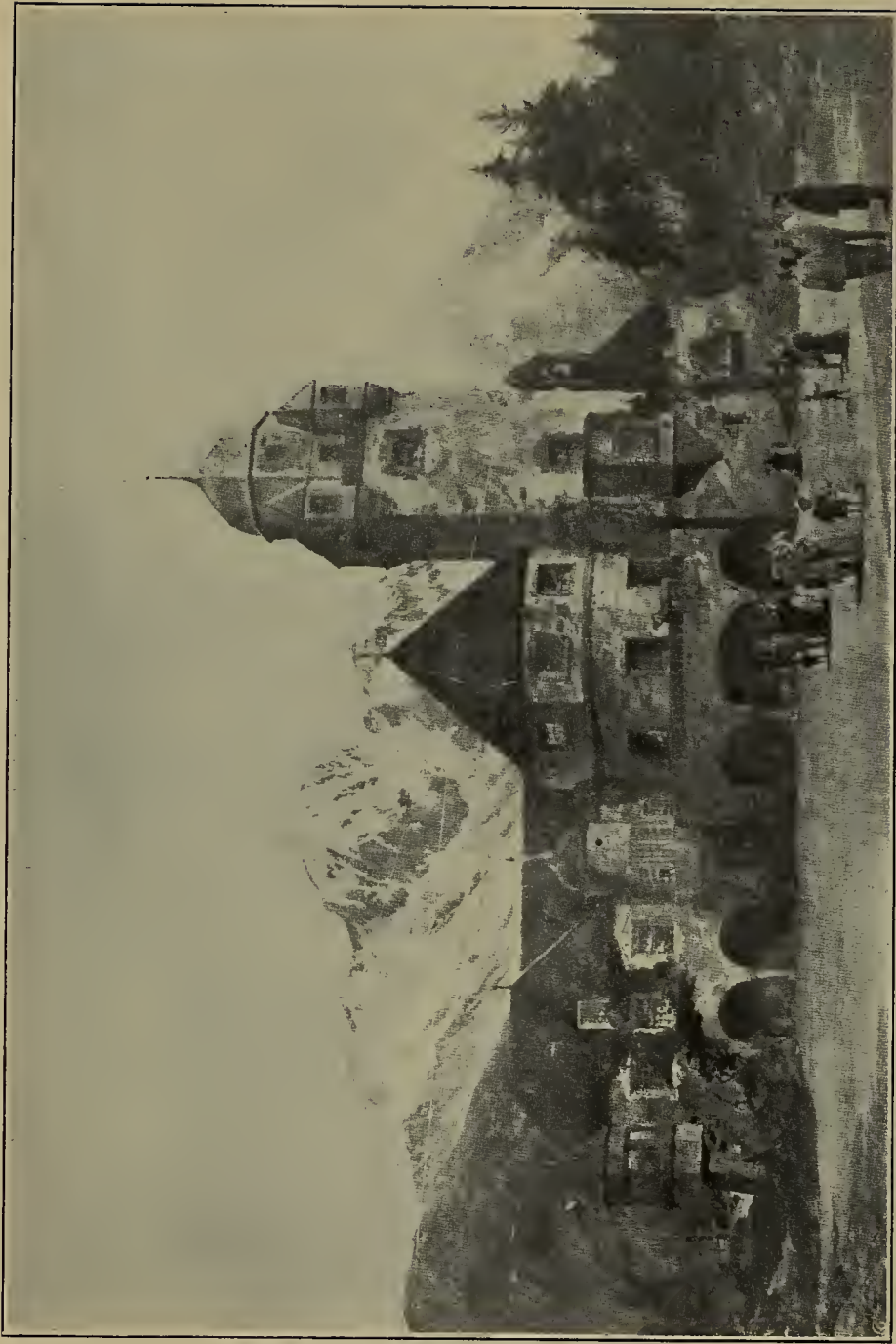
The above photograph shows "Hardscrabble," General Grant's famous log cabin, built by him in 1854 on the "Dent Farm," in St. Louis County, and where he spent many happy days.



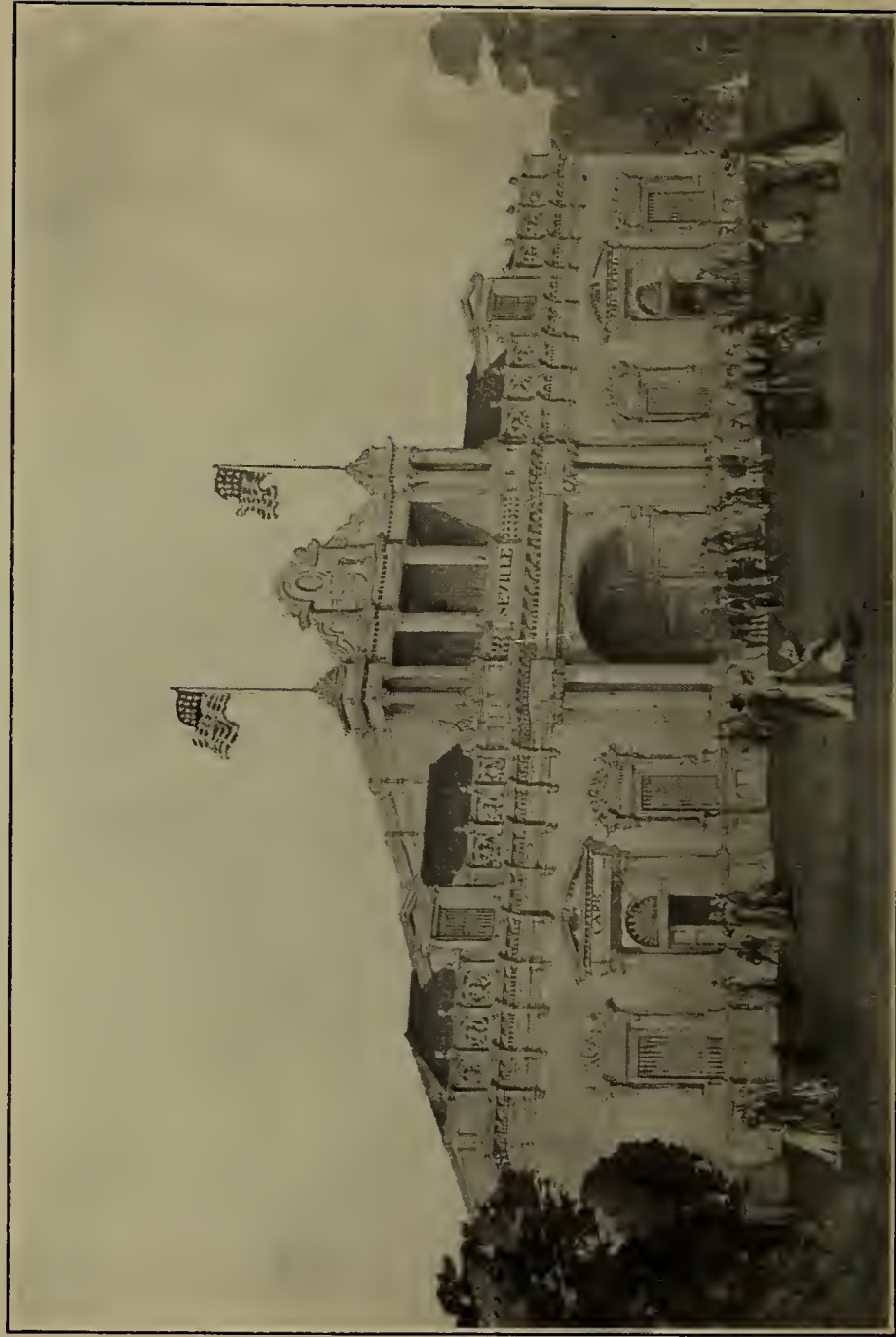
**MISSOURI BUILDING.**

Having room in our book for but one of the State buildings, we concluded to use a photograph of the Missouri Building.

“Down the Pike.”



TYROLEAN ALPS.



STREETS OF SEVILLE.

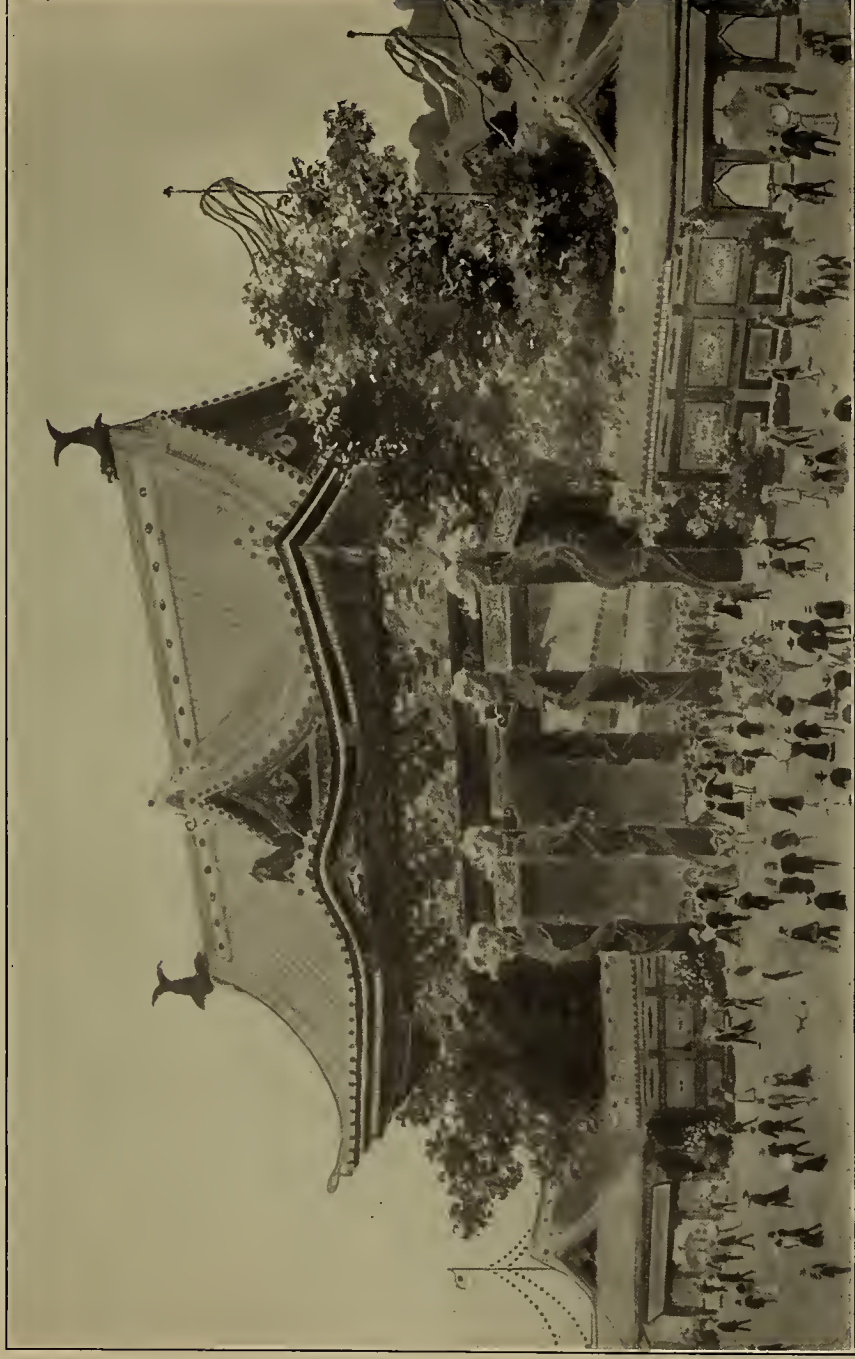


TYROLEAN ALPS — A MOUNTAIN MAID.



STREETS OF SEVILLE — A SPANISH BEAUTY.

“Down the Pike.”



FAIR JAPAN.



CLIFF DWELLERS.



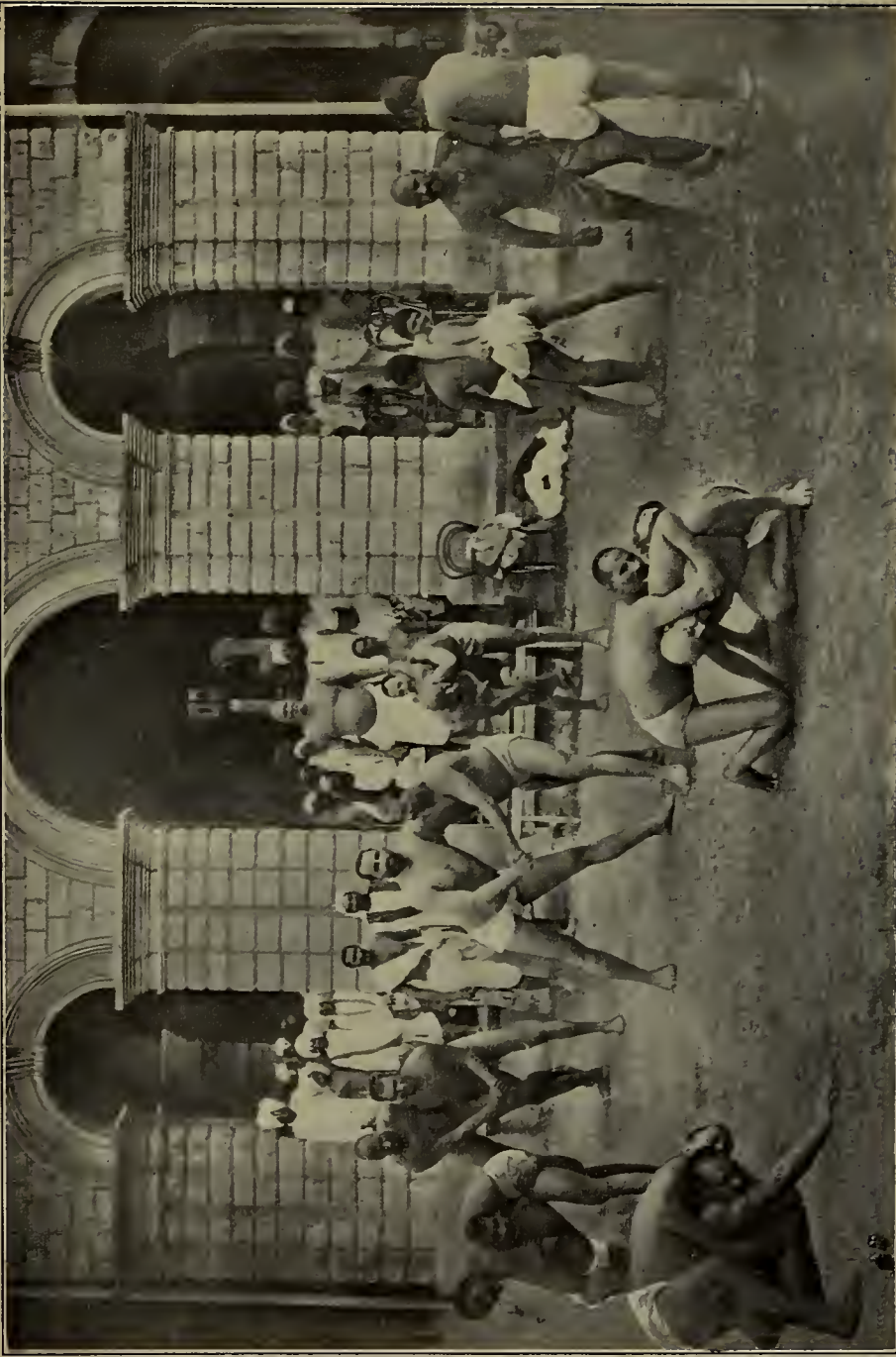


IN FAIR JAPAN — A JINRICKSHA.



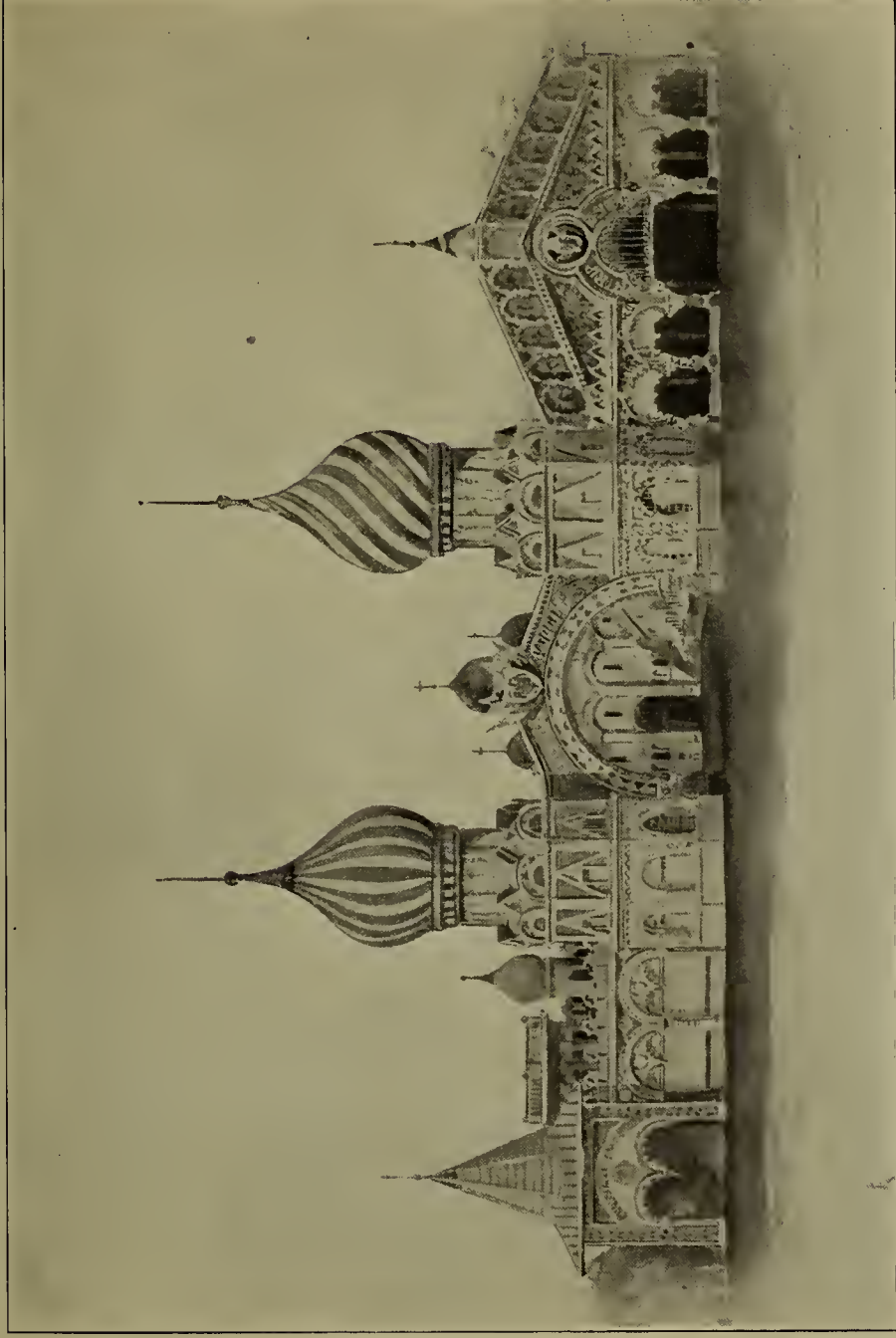
CLIFF DWELLERS — THE MOKI GIRLS.

“Down the Pike.”

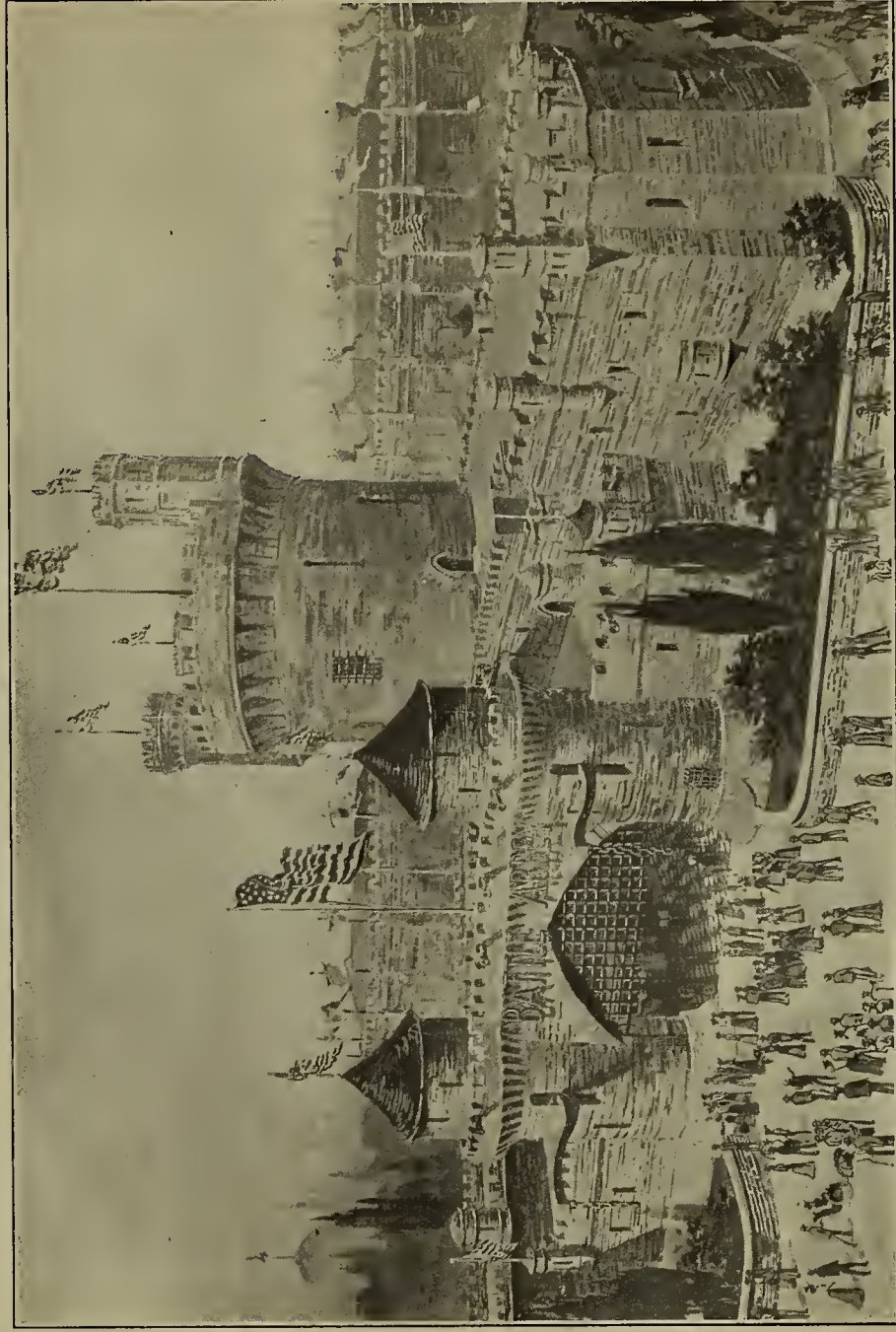


IN MYSTERIOUS ASIA.

“Down the Pike.”



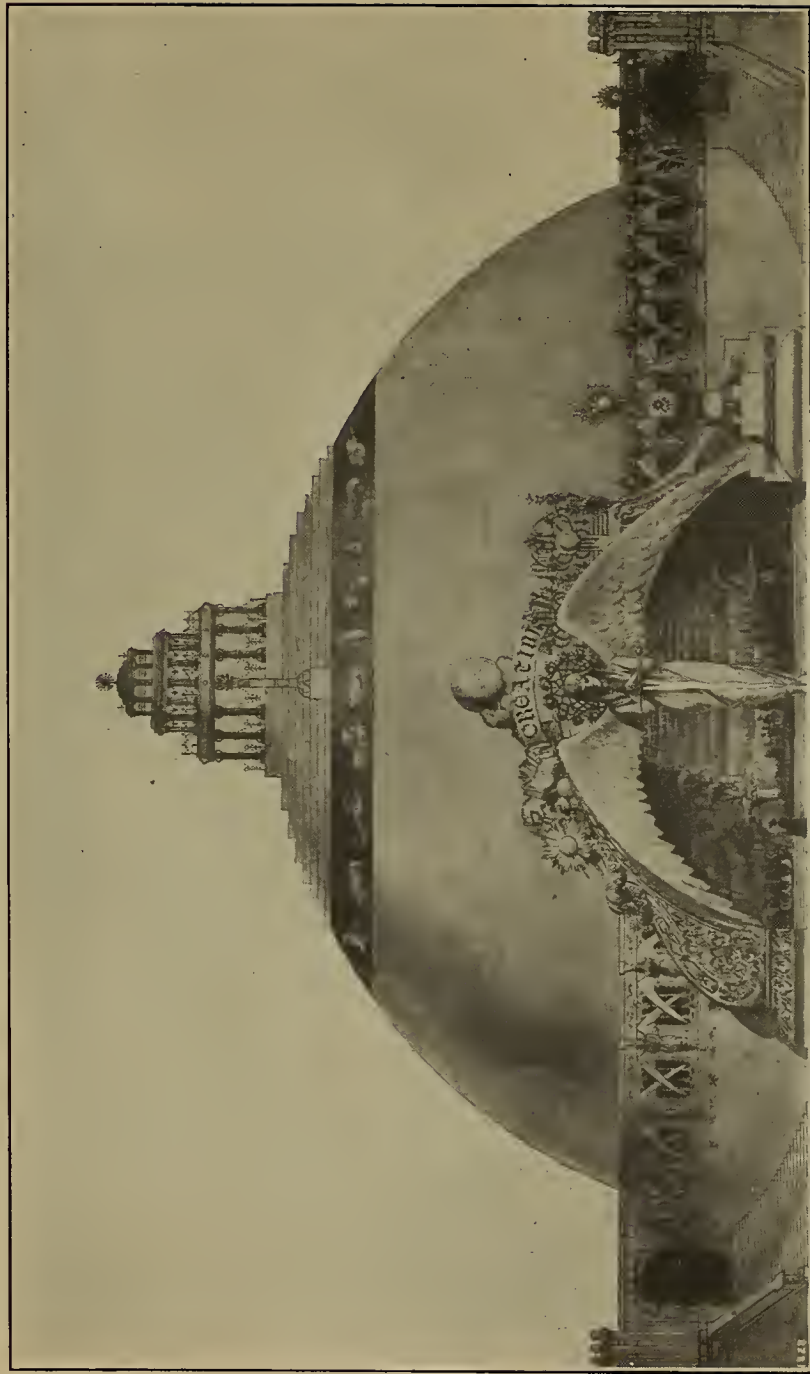
RUSSIA AND SIBERIA.



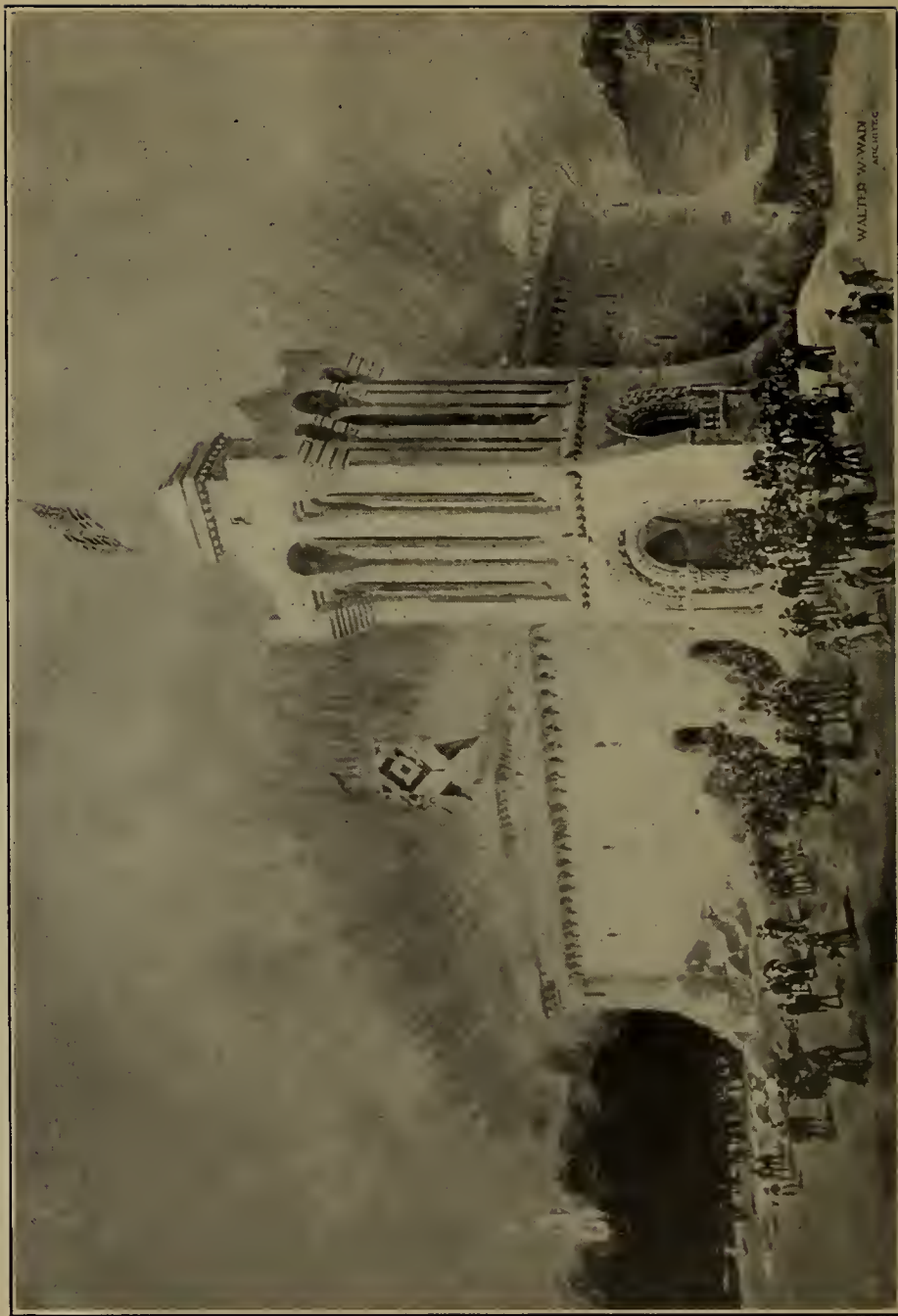
BATTLE ABBEY.

APR. 18 1904

“Down the Pike.”



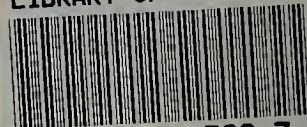
CREATION.



TO THE NORTH POLE.



LIBRARY OF CONGRESS



0 019 930 596 7

