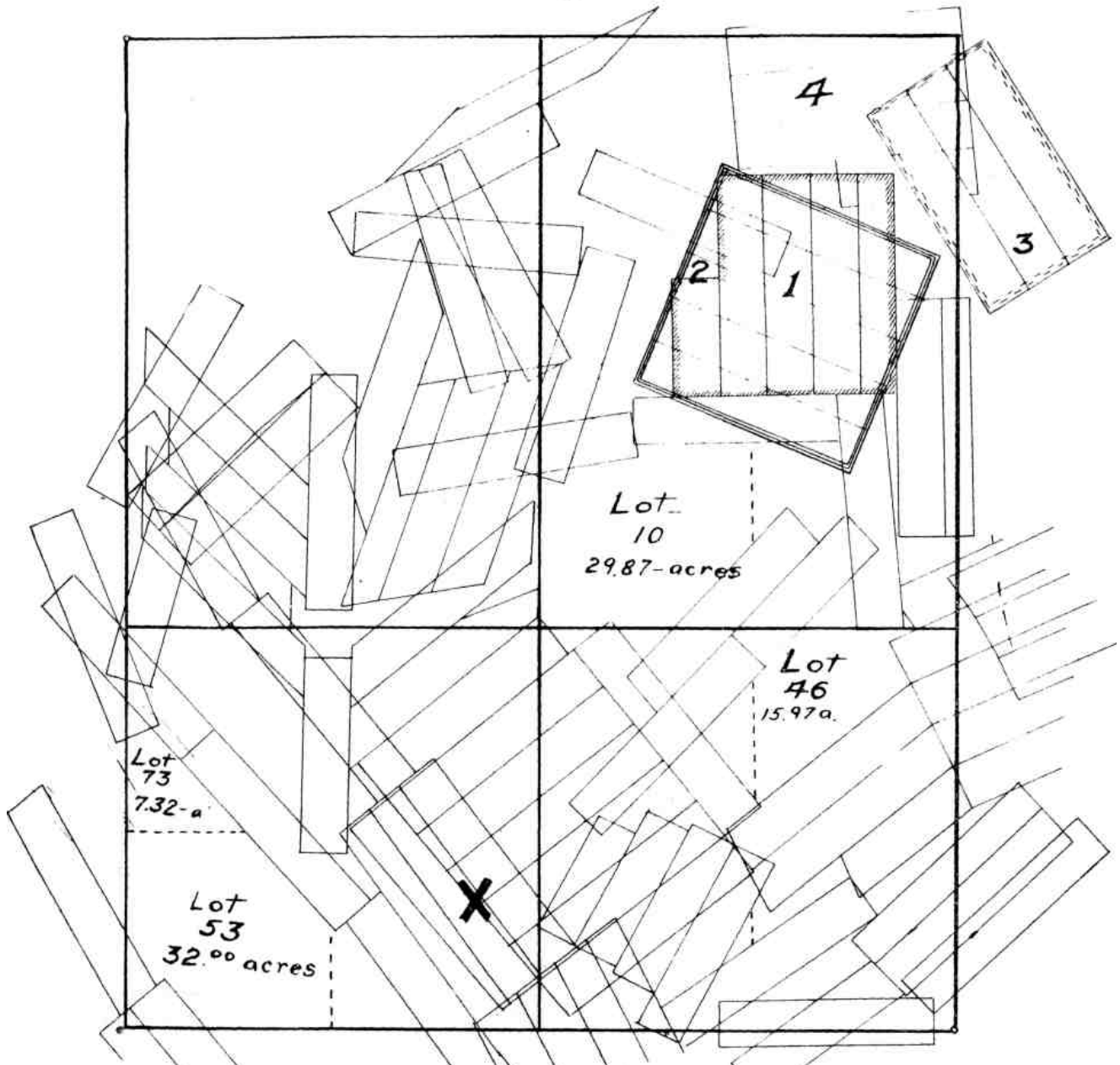


the land section do not constitute a parallelogram, as reported by the deputy land surveyor, but are as shown by the heavy lines of the diagram.

Diagram B is an official map of the same identical land section, showing the same claims, but in a vastly different arrangement. Group 1 is taken from its true position and placed on top of Group 2, and the owners thereof may fight it out in the

the land department at Washington. Map B is substituted therefor as the official segregation sheet by which the government determine, what land is patented, what land is subject to patent and what land belongs to each respective patent; it is constructed on theoretical lines entirely, based upon original records. Map A is practice, map B is theory; map A is discarded by the land department, map B is adopted. Claims are thereby shifted about and officially anchored

B.



Section 4, Township 16 South, Range 69 West, Cripple Creek District, showing claims as they are construed by the Department to be patented, according to the official segregation diagram in the Land Division of the United States Surveyor General's Office.

courts. Group 3 is likewise shifted and thrown on top of group 4.

Of the 100 patented claims shown there is not one which escapes the misconception. Lots 10, 46, 53 and 73, comprising over eighty acres, are thrown open to patent, although most of this area is at present covered by Patented claims. On the other hand, the tract marked by a cross is really unpatented, as shown on map A; but the occupants thereof are debarred from patenting for the reason that diagram B shows the tract to be occupied by various patents.

Although map A is constructed from official data procured in the field by deputy mineral surveyors it is not now the official diagram of

out of position. Land which is patented is thrown open to acquirement and may be patented to outsiders. Ground which is actually unpatented and open is construed to be patented to claims which occupy entirely different tracts.

**It should be stated in conclusion that the conditions which obtain as to section 4 also obtain, in varying degree, as to every one of the fifty land sections which cover the Cripple Creek situation, and as to every land section in all the mineral districts of Colorado and every other mining state.**