

Dec. 1883

(12)

CHARGE OUT SLIP

DATE 18/9/46

EVIDENTIARY DOC. NO. 1883

TRIAL BRIEF _____

EXHIBIT NO. _____

BACKGROUND DOC. NO. _____

Reports on the Growth
of Seaports - Korea &
Manchuria - 1931-1945

Court Exhibit
718

SIGNATURE Lt. Col. Tatanenko

ROOM NO. 354

INTERNATIONAL PROSECUTION SECTION

Doc. No. 1883

Date 12 June 1946

ANALYSIS OF DOCUMENTARY EVIDENCE

DESCRIPTION OF ATTACHED DOCUMENT

Title and Nature: Report of Red Army General Staff re enlargement of seaports in Korea and Manchuria during 1931-45

Date: 30 Jan 46 Original () Copy (x)
Language: Russian-English

Has it been translated? Yes () No (x)
Has it been photostated? Yes () No (x)

LOCATION OF ORIGINAL (also WITNESS if applicable)
U.S. Chief Counsel for Prosecution

SOURCE OF ORIGINAL: Russian Division

PERSONS IMPLICATED:

CRIMES TO WHICH DOCUMENT APPLICABLE: Aggression
against U.S.S.R.

SUMMARY OF RELEVANT POINTS (with page references):

Material with attached maps reveal that during period 1931-45, Japan greatly enlarged naval ports in MANCHURIA and KOREA to secure speedy transport of troops and ammunition from Japan to MANCHURIA.

Analyst: 2d Lt. Blumhagen

Doc. No. 1883

EXHIBIT NO. 718

Doc. No. 1883

Page 1.

REPORT
ON THE GROWTH OF SEAPORTS OF KOREA AND
MANCHURIA FROM 1931 to 1945

		Short characteristics		
PORTS		1931	1935-1937	1941-1945
1		2	3	4
Yuki	Fishing port of local significance		Seaport, Shipping capacity 320,000 t. per year. Train capacity - 4 trains per day round trip.	Seaport and port for disembarkation of troops. Base for maneuvers of light Navy forces. Shipping capacity 600,000 tons per year. Train capacity, 12 trains per day round trip.
Rasin	Fishing port of local significance		Seaport and port for disembarkation of troops shipping capacity 3-4 mln tons per year. Train capacity about 30 trains per day round trip.	Seaport and port for disembarkation of troops. Operation and maneuver base. (Harbor Yudzin) for light forces of the Navy shipping capacity 6 mln tons per year. Train capacity 42 trains per day round trip. 13 ships of 5000 tons displacement each could be moored at the piers of the port.
Seisin	Fishing port of local significance		Seaport and port for disembarkation of troops. Shipping capacity about 1.5 mln tons per year. Train capacity of the port 12 trains per day round trip.	Seaport and port for disembarkation of troops. Shipping capacity 1,700,000 t. per year 15 ships of 50,000 tons displacement each could unload at the same time at the pier and at the road-station.
Genzan	Inner Port of the Japanese Sea		Seaport. Shipping capacity about 400,000 tons per year. Train capacity 4 trains per day round trip.	Seaport and port for disembarkation of troops. Naval base of light Navy forces, fortified district, hydro-aviation base.

FILE COPY
RETURN TO ROOM 351

PORTS	Short characteristics		
	1931	1935-1937	1941-1945
	1	2	3
Fusan	First class seaport	Seaport and port for disembarkation of troops. Freight turnover about 3 mln tons per year. Train capacity 20-25 per day round trip.	Seaport and main port for disembarkation of troops. Fortified district. Naval base. Shipping capacity more than 6 mln t. per year. Train capacity of the port 64 trains per day both directions. Capacity in ships, 15 ships of 80,000 tons total displacement at the moorage and 13 ships of 65,000 tons total displacement on the roadstead.
Tzinkai	Naval base	Naval base	Naval base
Andun	Fishing port of local significance. Shipping capacity 850 tons per year	Large construction works were being performed	Seaport and port for disembarkation of troops. Shipping capacity 7 mln t. per year. Train capacity 8 trains per day round trip.
Dairen	First class seaport, shipping capacity about 11 mln tons per year	Seaport, shipping capacity 11,600 t. per year. Train capacity 80 trains per day both directions.	Main port of transportation of troops to Manchuria and Northern China and cargoes from Manchuria to Japan. 50 transports of 200,000 tons displacement could simultaneously be unloaded at the piers and on the roadstead. Equipment of the port allowed simultaneous unloading of troops of about two infantry divisions. Train capacity of the port 128 trains per day round trip.

Short characteristics			
PORTS	1931	1935-1937	1941-1943
1	2	3	4
Port Arthur	Naval Base	Naval Base	Naval Base
Inkow	Fishing port. Shipping capacity 1.8 mln tons per year	Seaport and port for disembarkation of troops. Shipping capacity 1.600.000 t. per year. Train capacity 12 trains per day both directions	Seaport and port for disembarkation of troops. Shipping capacity about 5 mln tons. Train capacity 40 trains per day both directions.
Kulundao	--	Seaport. Construction begun in 1936	Seaport and port for disembarkation of troops. Shipping capacity about 5 mln t. per year. Train capacity 32 trains per day round trip.

- Appendix: 1. Map: "Ports and Naval bases of Manchuria and Korea in 1931" (before occupation of Manchuria).
2. Map: "Ports and Naval bases of Manchuria and Korea in 1937".
3. Map: "Ports and Naval bases of Manchuria and Korea in 1945".

DEPUTY CHIEF OF DEPARTMENT OF
THE RED ARMY GENERAL STAFF

January 30, 1946

COLONEL TSIGITCFKO

C E R T I F I C A T E

I, Lt. Colonel TARANENKO G. I., a member of the military forces of the U.S.S.R., do hereby certify that Doc.##:

- 2237 "Table of the increase of the strength of the Kwantung Army and the Japanese Army on the whole from 1932 to 1945."
- 2073 "Report. Organization of Division of Kwantung Army."
- 2236 "Table of the growth of technical equipment in the Kwantung Army and in the Japanese on the whole from 1932 to 1945."
- 2130 "Report concerning Puppet Troops created by the Japanese in Manchuria and Inner Mongolia."
- 1879 "Table increase of Sungary river war flotilla from 1931 - 1945."
- 2151 "Report on the growth of the network of railroads and automobile roads in Manchuria from 1931 to 1945."
- 2134 "Report on the increase of the airfield system in Manchuria from 1931 to 1945."
- 2148 "Report construction of fortified districts in Manchuria from 1934 to 1945."
- 1877 "Report concerning construction of ammunition dumps in Manchuria from 1931 to 1945. "
- 1881 "Report on the increase of the barrack facilities in Manchuria from 1931 to 1945."
- 2133 "Report Concerning Japanese military settlements in Manchuria."
- 1883 "Report on the growth of Seaports of Korea and Manchuria from 1931 to 1945."
- 1885 "Table on the increase of the strength of the Japanese troops in Korea in the period 1931-1945."
- 2129 "Report on the increase of construction of network of railroads and highways in Korea from 1931 to 1945."
- 2132 "Report on the increase of the airfield network in Korea from 1931 to 1945."
- 2131 "Report on construction of fortified areas in Korea from 1931 to 1945."

2127 "Report on construction of military dumps in
Korea from 1931 to 1945."

2150 "Report on the increase of the barrack faci-
lities in lities in Korea from 1931 to 1945."

was delivered to me by the Red Army General Staff in Moscow,
on or about January 30, 1946,

LT. COL. TARANENKO
CHIEF OF THE USSR
DOCUMENT SECTION.

**ПОРТЫ И ВОЕННО-МОРСКИЕ БАЗЫ
Манчжурии и Кореи**

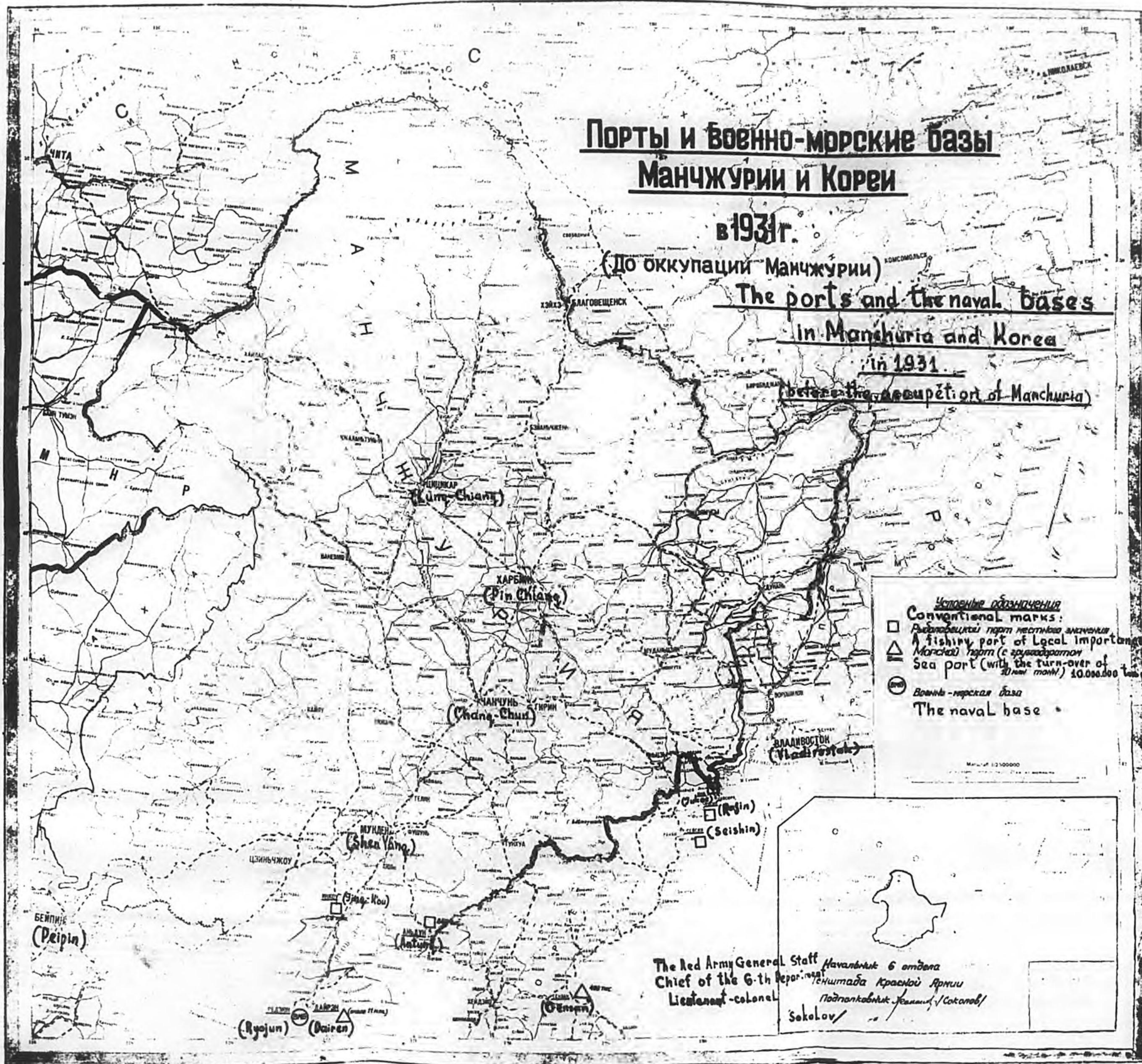
в 1931 г.

(До оккупации Манчжурии)

**The ports and the naval bases
in Manchuria and Korea**

in 1931

(before the occupation of Manchuria)



Устойчивые обозначения
Conventional marks:
 □ Рыболовецкий порт местного значения
 A fishing port of local importance
 △ Морской порт (с грузооборотом
 Sea port (with the turn-over of
 10,000,000 tons yearly)
 ⊙ Военно-морская база
 The naval base

The Red Army General Staff
 Chief of the 6-th Department
 Lieutenant-colonel Sokolov
 Подполковник Соколов / Sokolov

**ПОРТЫ И ВОЕННО-МОРСКИЕ БАЗЫ
Манчжурии и Кореи**

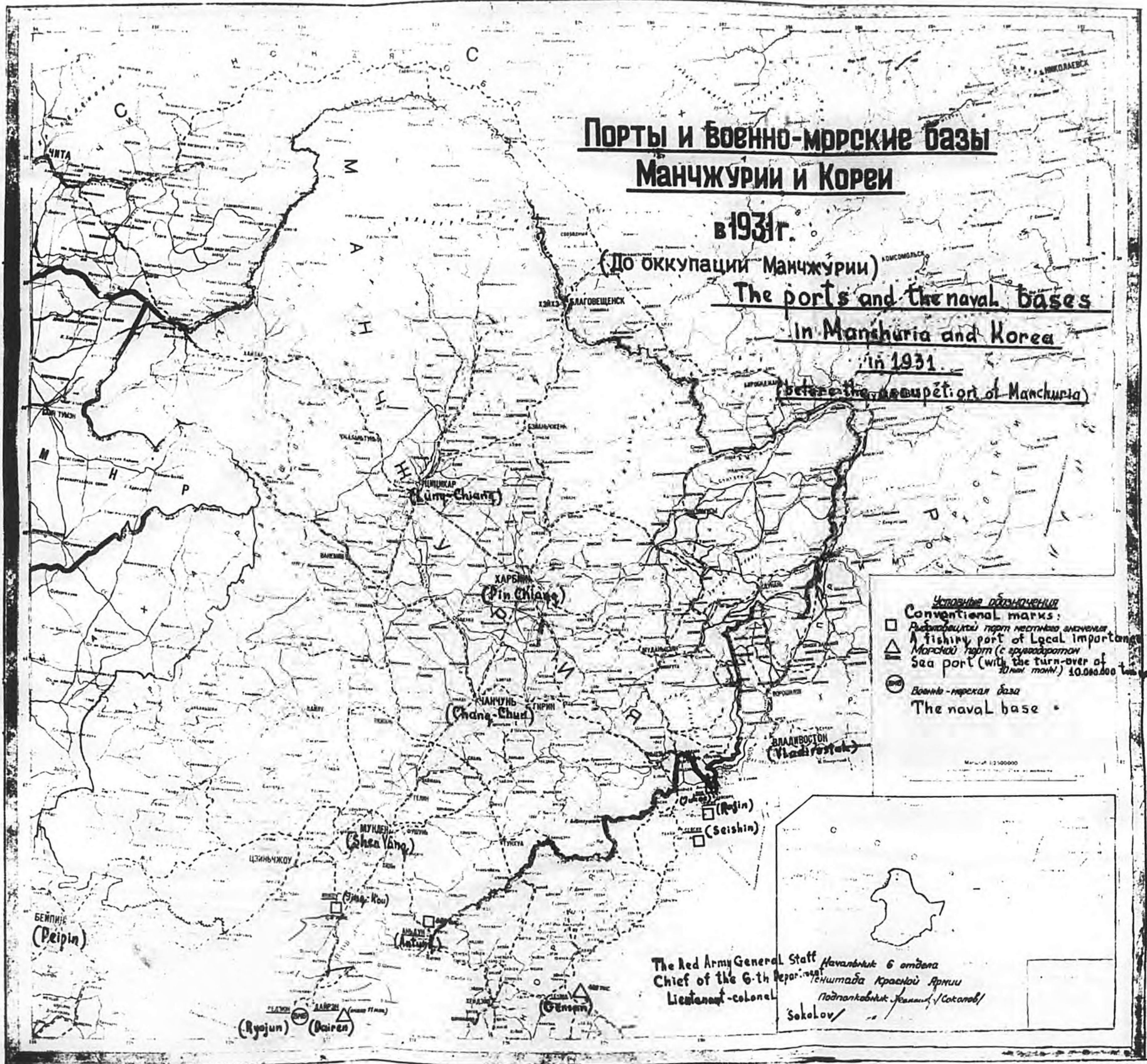
в 1931 г.

(До оккупации Манчжурии)

**The ports and the naval bases
in Manchuria and Korea**

in 1931.

(before the occupation of Manchuria)



- Условные обозначения**
Conventional marks:
- Рыболовецкий порт местного значения
A fishing port of local importance
 - △ Морской порт (с грузооборотом до 10 млн тонн)
Sea port (with the turn-over of 10,000,000 tons yearly)
 - Военно-морская база
The naval base

Масштаб 1:1 000 000

The Red Army General Staff
Chief of the 6-th Department
Lieutenant-colonel Sokolov

Навальный 6 отдела
Генштаба Красной Армии
Подполковник Соколов

Бейпин (Peiping)

Рюджун (Ryojun) Даирен (Dairen)

Генган (Gensan)

Радзин (Radzin) Сеисин (Seishin)

Шеянькоу (Shea Yang Kou)

Чанчунь (Chang-Chun)

Харбин (Harbin)

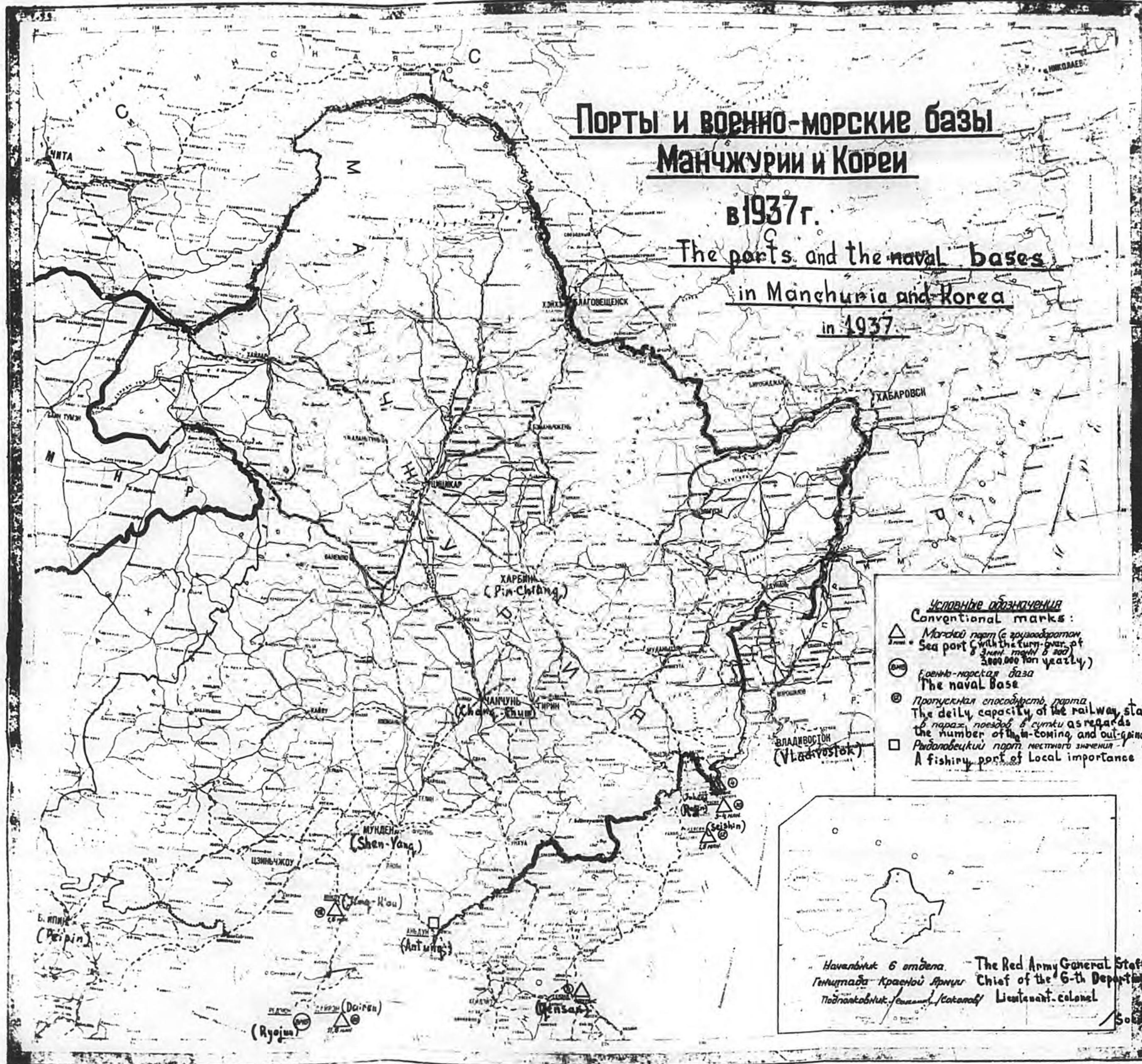
Кюм-Чян (Kium-Chiang)

Владивосток (Vladivostok)

**ПОРТЫ И ВОЕННО-МОРСКИЕ БАЗЫ
Манчжурии и Кореи**

в 1937 г.

**The ports and the naval bases
in Manchuria and Korea
in 1937.**



- Условные обозначения**
Conventional marks:
- △ Морской порт (с грузооборотом в параз. поезд. в сутки в 200,000 тонн yearly)
 - ⊙ Военно-морская база
 - ⊙ Пропускная способность порта в параз. поезд. в сутки в 200,000 тонн yearly
 - Рыболовецкий порт местного значения

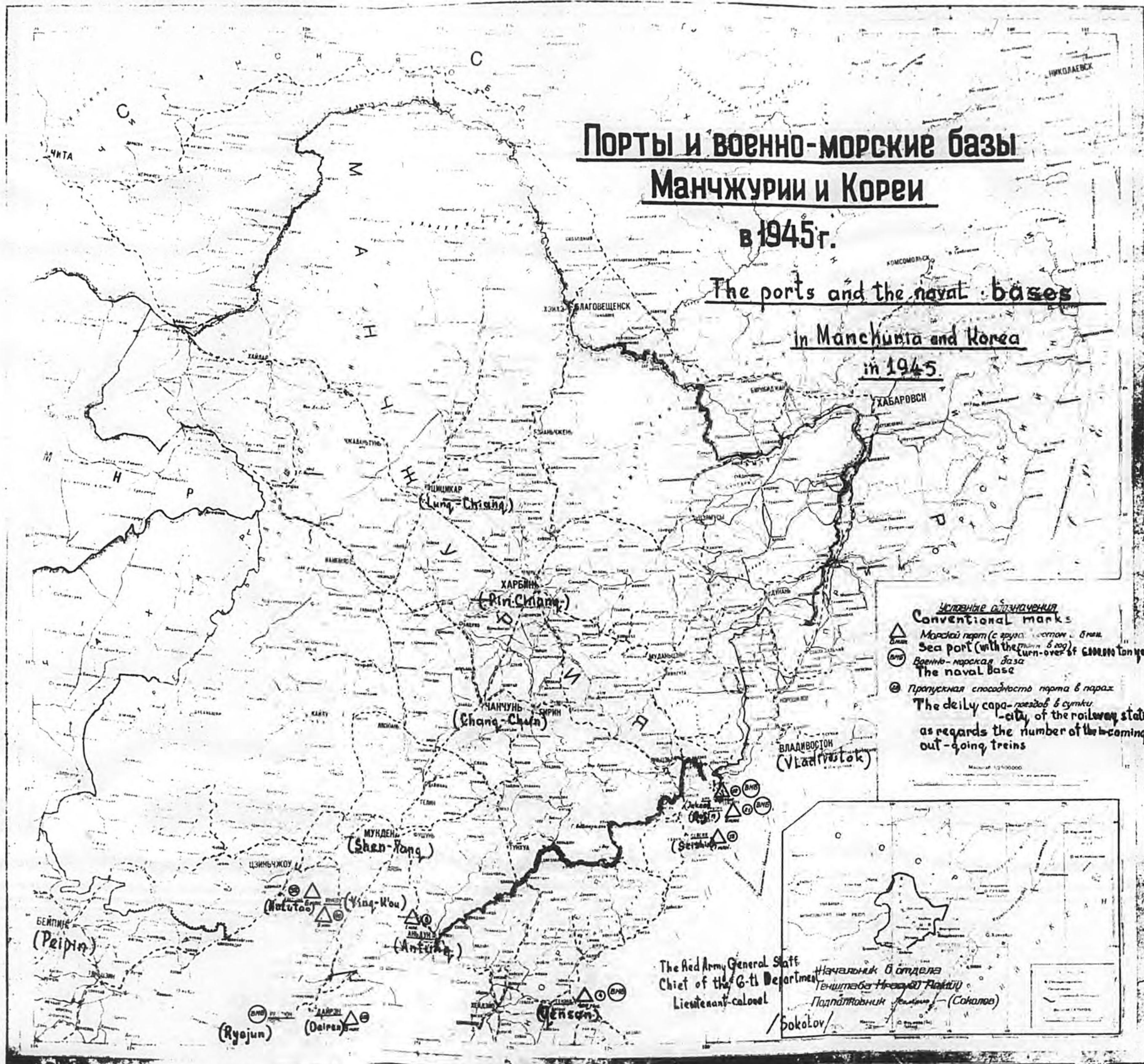
Начальник 6 отдела
Генштаба Красной Армии
Подполковник / Colonel
The Red Army General Staff
Chief of the 6-th Department
Lieutenant-colonel

Сод. 01/

ПОРТЫ И ВОЕННО-МОРСКИЕ БАЗЫ Манчжурии и Кореи

в 1945 г.

The ports and the naval bases
in Manchuria and Korea
in 1945.



Условные обозначения Conventional marks

- △ Морской порт (с грузо-пассажирским оборотом в год до 500000 тонн)
- Sea port (with the turn-over of 500,000 ton yearly)
- Военно-морская база
- The naval base
- ⊙ Пропускная способность порта в параз
- The daily capacity of the port as regards the number of the coming and out-going trains

The Red Army General Staff
Chief of the G-ti Department
Lieutenant-colonel

Начальник отдела
Тенштейн Николай Павлович
Подполковник (Сохолов)

/ Sokolov /

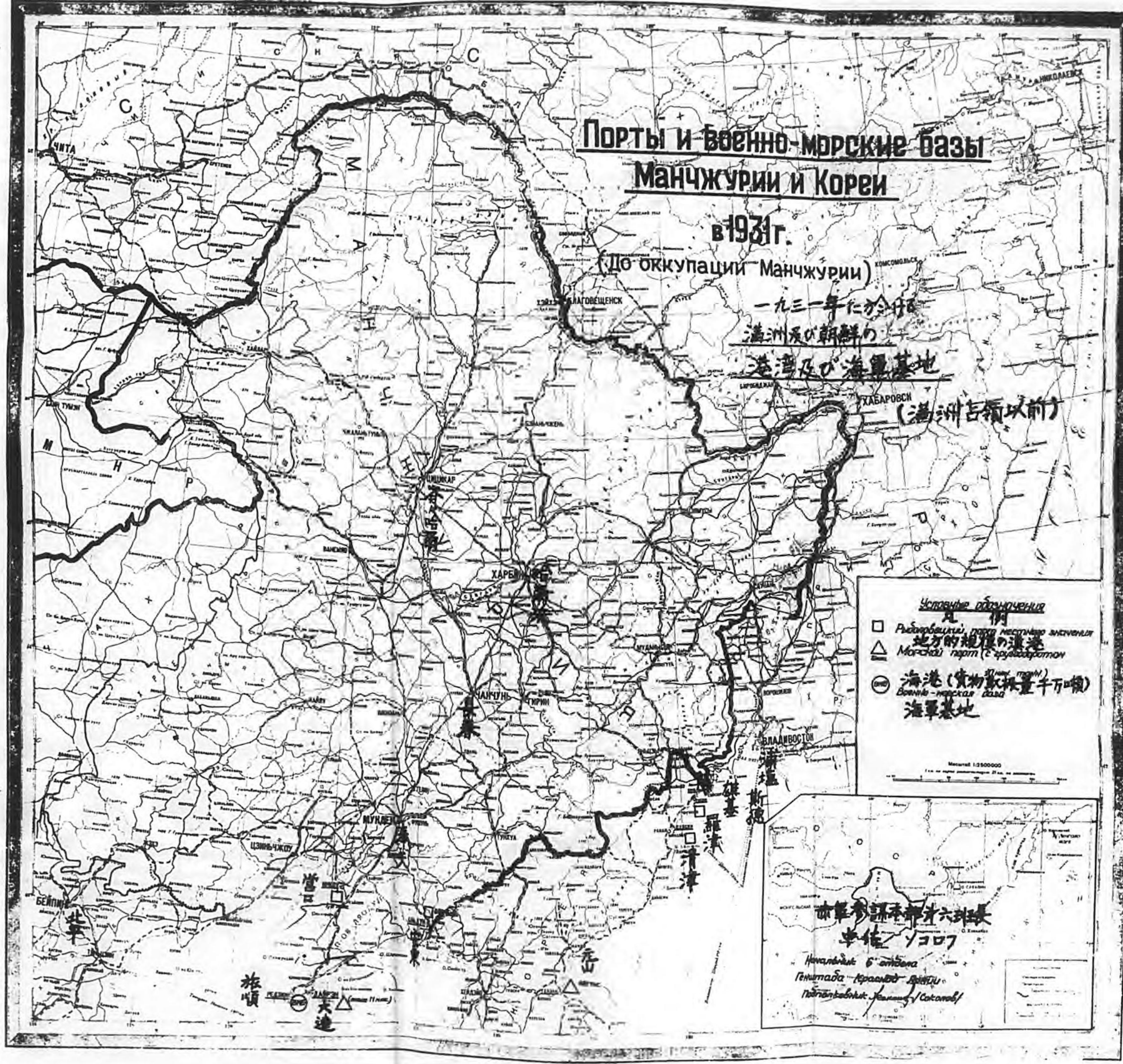
Порты и военно-морские базы Манчжурии и Кореи

в 1931 г.

(До оккупации Манчжурии)

一九三一年に於ける
満洲及び朝鮮の
港湾及び海軍基地

(満洲占領以前)



Условные обозначения

- Рыболовецкий порт местного значения
地方的規模の漁港
- △ Морской порт (с грузооборотом)
- (с цифрой) Морской порт (с грузооборотом)
Военно-морская база
海軍基地

Масштаб 1:2500000

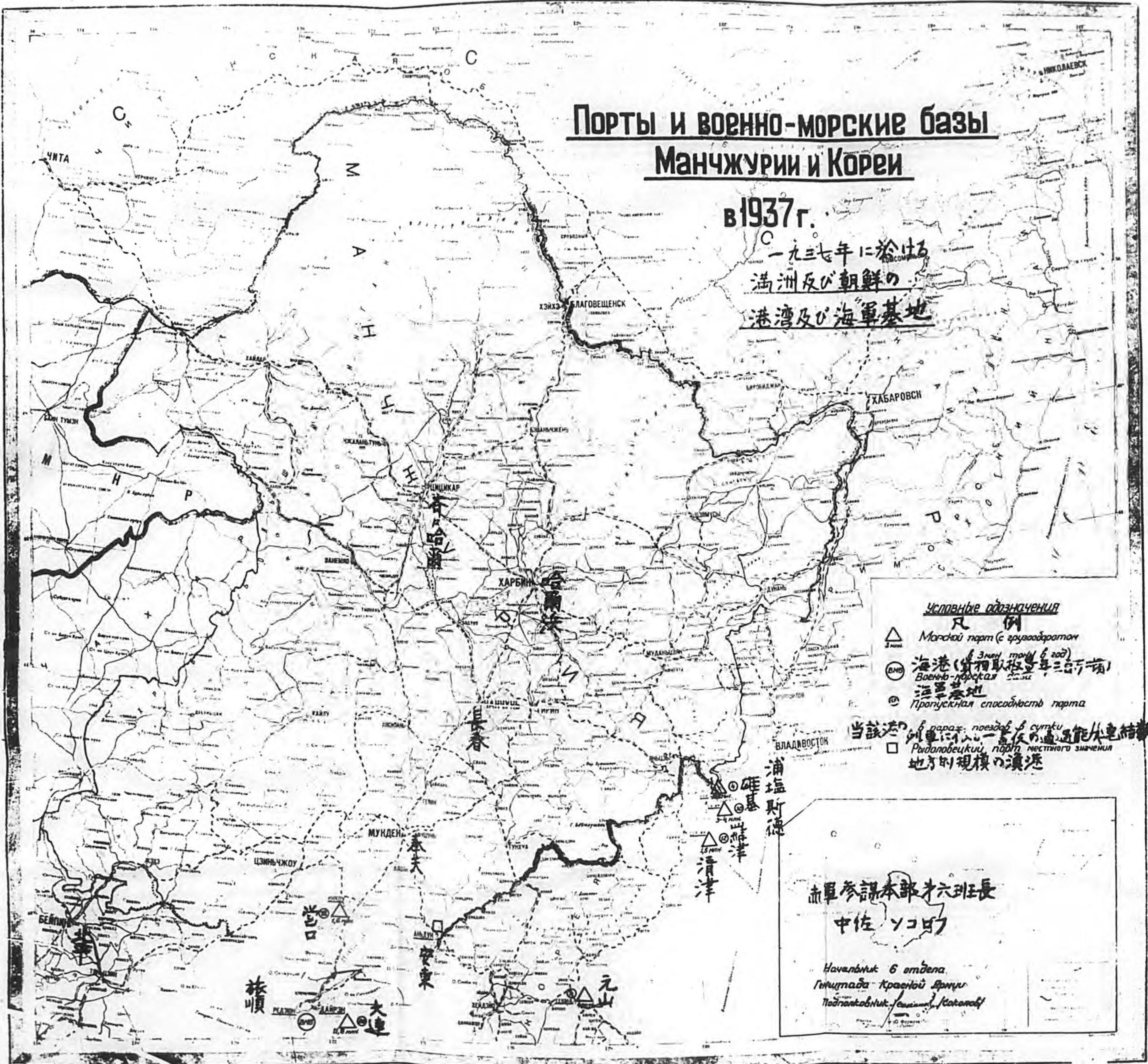
亦軍參謀本部才六班長
中佐 佐藤

Начальник 6-го отдела
Генштаба Красной Армии
Подполковник Яковлев / Соснов

ПОРТЫ И ВОЕННО-МОРСКИЕ БАЗЫ Манчжурии и Кореи

в 1937 г.

一九三七年に於ける
満洲及び朝鮮の
港湾及び海軍基地



Условные обозначения

- △ Морской порт (с грузооборотом 3 млн)
- (с цифрой)海港 (грузооборот в год)
- ◎ Военно-морская база
- ⊙ Пропускная способность порта

当該港の 1 日 1 回 1 往復 列車 結載
 地方別規模の漢港

赤軍参謀本部才六班班長
 中佐 ヲコウ

Навигант 6 отдела
 Генштаба Красной Армии
 Подполковник / капитан / лейтенант

