

8 WEEK from 11/12

From: aapostal <aapostal@aol.com>

To: aapostal@aol.com <aapostal@aol.com>

Subject: HEADQUARTERS & HEADQUARTERS COMPANY

Date: Sat, Oct 19, 2019 7:59 pm

HEADQUARTERS & HEADQUARTERS COMPANY
1067th ENGINEER CONSTRUCTION GROUP

With references to Clifton Allen Pratt

UNIT HISTORY

23 Dec 1943 ----23 Dec 1945

ORIGINAL UNIT^(a)

23 Dec 1944 Provisional Headquarters and Headquarters, Engineer Construction Group conceived Eighth Service Command, Army Forces, Dallas 2, Texas.

07 Aug 1944 Provisional Headquarters and Headquarters Company, Engineer Construction Group organized Camp Claiborne, LA

Authority for Organization: General order #27, Armed Service Forces Training Center, Camp Claiborne LA, dated 7 Aug 1944.

Personnel were obtained from full duty overhead personnel of Camp Claiborne and EM pools in Camp Claiborne, LA

CHANGES IN ORGANIZATION^(a)

IN DESIGNATION:

2 Sep 1944 Unit became Hq and Hq Co 1067th Construction group pursuant to authority in War Department letter AG 322 OB-I-SPMOU-M. 5 Sep 1944 subject: Constitution and Activation of Certain Engineer Units.

11 Sep 1944 General Orders #43 Inactivated Provisional organization. Major Clifton A Pratt assumed acting command of the 1067th Engineer Construction Group.^(b)

13 Sep 1944 activation was announced in General Order # 105 Army Service Forces Headquarters Eighth Service Command, Dallas 2, Texas. Co Col Roy M McCutchen assumed command, Major Clifton A Pratt assumed Executive Officer and Captain Stanley K Brown Adjutant.

UNIT TRANSFER FROM ONE REGIMENT TO ANOTHER^(a)

07 Aug 1944 Assigned to 1st Regiment, 3860th Unit, ASFTC, Camp Claiborne, La.

23 Aug 1944 Relieved from 1st Regiment, 3860th Unit ASFTC, Camp Claiborne, La.

24 Aug 1944 Assigned to 2nd Regiment, 3860th Unit ASFTC, Camp Claiborne, La.

20 Oct 1944 Relieved from 2nd Regiment, 3860th Unit ASFTC, Camp Claiborne, La.

23 Oct 1944 Assigned to 17th Group 3860 Unit, Army Service Forces Training Center, Camp Claiborne, La.

STRENGTH, COMMISSIONED AND ENLISTED^(a)

08 Aug 1944 Beginning of pre-activation:

(a) OFF: 4

(b) WO: 0

(c) EM: 48

11 Sep 1944 At activation

(a) OFF: 10

(b) WO: 0

(c) EM: 78

31 Dec 1944 Prior to shipment to ETU

(a) OFF: 12

(b) WO: 02

(C) EM: 80

TRAINING STATIONS^(a)

08 Aug 1944 Entire unit activated, Camp Claiborne, La

04 Oct 1944 Bivouac near Boyce, La

21 Oct 1944 Major Clifton A Pratt went on leave to visit his family and new born son (07 Oct 1944) in Terra Haute and Brazil In.^(c)

28 Oct 1944 Camp Claiborne, La

13 Nov 1944 Lake Charles, La

21 Nov 1944 Twelve enlisted men went before a review board and received a rating of excellent.

22 Nov 1944 Brigadier Generals Guerre and Miller from headquarters of Camp Claiborne, La visited Group Headquarters. Warning orders for overseas destination were issued by the Commanding General, Army Service Forces, Washington, DC

25 Nov 1944 Camp Claiborne, La

02 Dec 1944 Marksville, La (Engineer Section Field Party). The training tests given by the Inspector General and Office of the Chief Engineer Inspection Teams received the rating of Excellent. Performance of the unit has been considered Satisfactory. The unit is ready for overseas movement.

09 Dec 1944 Camp Claiborne, La. Full company of troops was filled.

11 Dec 1944 90% of all shipping containers had been constructed. 85% of equipment had been received. Major Clifton A Pratt recommended for promotion to Lieutenant Colonel.(d)

13 Dec 1944 All equipment shortages had been requested.

31 Dec 1944 All required subjects (lectures) on POM subjects, such as censorship, movement of troops overseas, personal affairs etc., were complete. The first shipment of organizational equipment was 95% complete.

01 Jan 1945 Major Clifton A Pratt received his promotion to Lieutenant Colonel.(j)

26 Jan 1945 Staged at Camp Miles Standish, Ma

06 Feb 1945 Departed the Boston Port of Embarkation.

19 Feb 1945 Arrived on the continent (France) via UK aboard troop carrier shipment BO-128 with a compliment of 93 men.(e) They were staging at the Cigarette Camp Lucky Strike.(f)

04 Mar 1945 Movement orders No. 2-236 dated 28 Feb 1945 and Movement orders No. 3-13 are rescinded and Movement orders No. 3-48 request movement without delay of the 1067th Engr Const Gr Hq & Hq Co to Liege Belgium.(g)

06 Mar 1945 Crossed into Belgium

20 Mar 1945 Entered Germany

12 Apr 1945 President Franklin D Roosevelt died.

30 Apr 1945 Hitler committed suicide.

02 May 1945 Served in the Army of Occupation of Germany

03 May 1945 Victory in Europe.

15 May 1945 1067th put on Priority List No. 4 to move from ETO (Europe) to POA (Pacific Ocean Area)Arrival date Marseilles, France 31 May.(h)

18 May 1945 Picture of Lt Col Clifton A Pratt and Col McCutchen in Bohn Germany.(i) Movement order No. I33 states that the unit is moving from Bohn to the staging area.(h)

02 Jun 1945 Orders received deleting the 1067th from priority list 4B and adding to list 4A, Destination STEAMROLLER. +

05 Jun 1945 Departed Germany. Entered France.

01 Jul 1945 1067th move from Marseilles, France to port Antwerp, Belgium for immediate departure.

(h)

06 Jul 1945 1067th Arrived at staging area Antwerp.

09 Jul 1945 Departed France aboard (Shipment #R0698-C)(k). The Marine Eagle? For duty in POA.

06 Aug1945 Little Boy (first atomic bomb) was dropped on the Japanese city of Hiroshima.

09Aug1945 Fat Man was dropped on Nagasaki, Japan.

15 Aug1945 Japan surrendered. The 1067th Engineer Construction Group arrive San Fernando Luzon Philippines.

02sep1945. V-J Day World War II was over.

30 Sep1945 Aringay, La Union, Luzon Philippines per Monthly Technical Report dated this date. (L)

16 Oct1945 1067th sailed from Luzon PI for Kure Honshu, Japan.

22Oct1945 1067th Arrived Kure Honshu, Japan (J)

10Nov1945 Lt Col Clifton A Pratt Ships out stateside(j)

15Nov1945 -- 05 Mar 1946 Server in the Army of Occupation of Japan. (k)

02Jan 1946 Monthly Historical Report. (m)

09Nov1946 1067th Engineer Construction Group was inactivated in Japan.

(2)

DECLASSIFIED
NND 785017
AUTHORITY
BY LS NARA DATE 2/17

HEADQUARTERS, HEADQUARTERS COMPANY
And
MEDICAL DETACHMENT

1067TH ENGINEER CONSTRUCTION GROUP

APO 350, c/o Postmaster

New York, New York

UNIT HISTORY

7 Aug 44 - 31 Dec 44

CONTENTS

<u>SUBJECT</u>	<u>SECTION</u>
ORIGINAL UNIT	I
CHANGES IN ORGANIZATION	II
STRENGTH, COMMISSIONED AND ENLISTED	III
STATIONS OF UNIT OR PARTS THEREOF	IV
CAMPAIGNS	V
BATTLES	VI
COMMANDING OFFICERS IN IMPORTANT ENGAGEMENTS	VII
LOSSES IN ACTION: OFFICERS AND MEN	VIII
FORMER AND PRESENT MEMBERS WHO HAVE DISTINGUISHED THEMSELVES IN ACTION	IX
PHOTOGRAPHS OF PERSONNEL, IMPORTANT SCENES OR EVENTS	X

ENG 1067 - 8.1

14168
main

DECLASSIFIED
NND 735017
AUTHORITY
BY SP NARA DATE: 2/17

Unit History, 1067th Engr Cons Gp
(From 7 Aug 44 to 31 Dec 44 cont'd)

1.

I. ORIGINAL UNIT.

A. Designation: Provisional Headquarters and Headquarters Company, Engineer Construction Group (less attached Medics).

B. Date of Organization: 7 August 1944.

C. Place of Organization: Camp Claiborne, La.

D. Authority for Organization: General Order # 27, Army Service Forces Training Center, Camp Claiborne, La., dtd 7 August 1944 (copy attached).

E. Sources from which Personnel were obtained: Bulk from full duty overhead personnel of Camp Claiborne, through interview by officers of this unit. Remainder through requisition from EM pools in Camp Claiborne, La.

II. CHANGES IN ORGANIZATION.

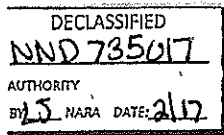
A. IN DESIGNATION: Unit became Hq and Hq Co, 1067th Construction Group, upon activation pursuant to authority in War Department letter AG 322, (2 Sep 44) OB-I-SPMOU-M, 5 September 1944, subject: Constitution and Activation of Certain Engineer Units", activation was announced in General Order Number 105, Army Service Forces, Headquarters Eighth Service Command, Dallas 2, Texas, dated 13 September 1944. (Copy attached.) And in General Orders Number 43, dated 11 Sept 44, ASFTC, Camp Claiborne, La. (copy attached). The latter order inactivated Provisional organization.

B. TRANSFER AS A UNIT FROM ONE REGIMENT TO ANOTHER.

1. Assigned to 1st Regiment, 3860th Unit, ASFTC, Camp Claiborne, La., when activated provisionally 7 Aug 44 (see I A above). (Copy of order atchd.)

2. Attached to 2nd Regiment, 3860th Unit, ASFTC, Camp Claiborne, La., effective 24 August 1944, per Par #6, General Orders #26, ASFTC, Camp Claiborne, La., dtd 23 August 1944, and removed from assignment to 1st Regt (see order attached).

CLASSIFIED
CANCELLED
BY AUTHORITY OF THE ADJUTANT GENERAL
14 Mar 46



Unit History, 1067th Engineer Const Gp
(From 7 Aug 44 to 31 Dec 44, cont.)

2.

II. CHANGES IN ORGANIZATION (Cont'd)

3. Assigned to 17th Group, 3860th Unit, Army Service Forces Training Center, Camp Claiborne, Louisiana, and relieved from attachment to 2nd Regiment, Camp Claiborne, effective 23 October 1944, per General Orders Number 63, ASFTC, Camp Claiborne, Louisiana, dated 20 October 1944 (copy attached).

C. CHANGES DUE TO CHANGES IN TABLE OF ORGANIZATION.

1. Activated 11 September 1944 as numbered unit (after period unit provisional - - see I A above) under TO and E 5-72 dated 23 December 1943 (copy attached).

2. Change No. 1 to TO and E 5-72, dated 8 September 1944, made no change in total strength, made minor changes in equipment.

3. Change No. 2 to TO and E 5-72, dated 13 December 1944, not applicable to this unit as unit was alerted at time; to be adopted overseas.

III. STRENGTH, COMMISSIONED AND ENLISTED:

1. At beginning of preactivation period, 8 August 1944:

- (a) OFF: 4
- (b) WO : 0
- (c) EM : 48

2. At activation, 11 September 1944:

- (a) OFF: 10
- (b) WO : 0
- (c) EM : 78

3. Net changes monthly:

(a) 31 August 1944 (2400 hours):

- (1) OFF: 3 gain
- (2) WO : No change
- (3) EM : 2 gain

(b) 30 September 1944 (2400 hours):

- (1) OFF: 3 gain
- (2) WO : No change
- (3) EM : 29 gain

DECLASSIFIED NND 735017 AUTHORITY BY 5 MARA DATE: 2/17

Unit History 1067th Engr Const Gp,
(From 7 Aug 44 to 31 Dec 44, cont.)

3.

III. STRENGTH, COMMISSIONED AND ENLISTED.

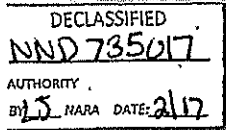
- (c) 31 October 1944 (2400 hours):
 - (1) OFF: 2 gain
 - (2) WO : 1 gain
 - (3) EM : No change
 - (d) 30 November 1944 (2400 hours):
 - (1) OFF: No change
 - (2) WO : No change
 - (3) EM : 1 loss
 - (e) 31 December 1944 (2400 hours):
 - (1) OFF: No change
 - (2) WO : 1 gain
 - (3) EM : 2 gain
4. At end of period reported: 31 December 1944 (2400 hours)
- (a) OFF: 12
 - (b) WO : 2
 - (c) EM : 80

IV. STATIONS.

A. Date of arrival.

1. Camp Claiborne, Louisiana, 8 August 1944, activated (entire unit).
2. Bivouac near Boyce, Louisiana, (33 miles from Camp Claiborne) 4 October 1944 (entire unit).
3. Camp Claiborne, Louisiana, (33 miles) (entire unit) 28 October 1944.
4. Lake Charles, Louisiana, (85 miles) 13 November 1944 (entire unit).
5. Camp Claiborne, Louisiana, (85 miles) 25 November 1944 (entire unit).
6. Marksville, Louisiana, (50 miles) 2 December 1944 (Engineer Section Field Party).
7. Camp Claiborne, Louisiana, (50 miles) 9 December 1944 (Engineer Field Party).

B. Date of departure. No journey more than one day.



Unit History, 1067th Engr Const Gp
 (7 Aug to 31 Dec 44, nt.)

UNIT HISTORY 1944

SECTION V

C A M P A I G N S

During the period from 7 August 1944 to 21 August 1944 key personnel were setting up the Group selecting additional officers and a nucleus of enlisted men.

During the period of 21 August 1944 to 4 September 1944, under the guidance of the Company Commander, a refresher course on Engineer training was held. On 4 September 1944 fifty (50) percent of personnel were allowed furlough while the remaining fifty (50) percent continued training. All furloughs were completed by 21 September 1944.

Training was conducted and MTP 21-3 from 11 September 1944 to 21 September 1944, and then under MTP 5-1 and 5-2; while training under MTP 5-2, the organization moved into bivouac per VOCO; Headquarters, Army Service Forces Training Center, Camp Claiborne, Louisiana and Field Order No. 1, Headquarters 1067th Engineer Construction Group, dated 3 October 1944. The mission was "Construct an all weather one track road for Engineer Regimental loads from gravel pit, NE of STILLE, Louisiana to RJ with highway No. 107, N of Zimmerman Camp". The 1067th Engineer Construction Group was to design, layout and supervise the construction of this project. Units attached to the Group for construction were Companies A and B of the 3rd Battalion, 2nd Regiment and 1359th and 1360th Engineer Dump Truck Companies, all of the Army Service Forces Training Center at Camp Claiborne, Louisiana. Companies A and B were each allotted half of the road project in grubbing, sub-grade and finish grade. The 1359th and 1360th Engineer Dump Truck Companies hauled the gravel used on the road job.

After 1900 hours, 9 October 1944, the 1067th Engineer Construction Group closed first bivouac area and motor marched under black-out conditions to the new bivouac area in the vicinity of ELMER, Louisiana and had completely established a new Headquarters by 0600 hours, 10 October 1944.

Under the supervision of Group Headquarters, Companies A and B marched under strict black-out conditions from HINESTON to MELDER, Louisiana. On their march the two companies encountered a deliberate mine field simulated which was breached. Upon arrival at their new bivouac area in the vicinity of Camp Claiborne Ponton Area Company A set a record for the building time of a twenty-five (25) ton ponton bridge.

On 14 October 1944 at 1200 hours the 1360th Engineer Dump Truck Company was relieved from attachment to the 3rd Battalion, 2nd Regiment.

From all indications Company A had the hardest portion of the road project and completed seventy-four (74) percent of the task while Company B completed eighty-eight (88) percent of its allotted portion. An estimated total eighty-eight (88) percent of the entire job, as first estimated was completed by the two (2) team training companies and two

DECLASSIFIED	
NND 735017	
AUTHORITY	
BY: J. NARA	DATE: 2/17

Unit History, 1067th Engr Const Gp,
(From 7 Aug 44 to 31 Dec 44.)

V CAMPAIGNS (cont'd)

Engineer Dump Truck Companies, 14 October 1944. Under the supervision of the 1067th Engineer Construction Group, S-3 Section, the 1359th and 1360th Engineer Dump Truck Companies completed the remainder of this project on 26 October 1944. No final statement was made of the amount of dirt moved. Field operations were conducted under tactical and semi-tactical conditions.

Under the direction of representatives of the Army Service Forces Training Center, Military Training Division, Companies A and B attacked two entrenched enemy companies (simulated) in a daylight assault on 23 October 1944.

At 0700 hours (CWT), 28 October 1944, the 1067th Engineer Construction Group left its bivouac area to return to Camp Claiborne, Louisiana for further training.

Valuable experience was gained by the officers and enlisted men during this period of bivouac training. Each enlisted man was tried in his technical job.

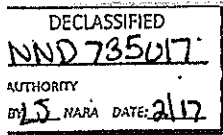
As per Training Exercise dated 7 October 1944 and VOCO, CG, Army Service Forces Training Center, Camp Claiborne, Louisiana, 7 October 1944 the 1067th Engineer Construction Group was assigned the mission of selecting a site, design and layout of an airfield three (3) miles from Camp Claiborne suitable for operation of fighter planes. In accordance with Chapter 2, Field Manual 5-6, an Engineer Estimate of the situation was prepared and submitted. Simulated troops were to build the landing strip. Telephone communication was established with subordinate units. This exercise furthered the training especially of the Engineer Section.

As per Training Exercise No. 3 dated 17 October 1944 and Field Order No. 9, Headquarters, 1067th Engineer Construction Group, dated 8 November 1944, the Group was assigned the mission of selection of site, the design and layout of a railroad regulating station near Camp Claiborne, Louisiana. Completion date was set for 1 December 1944. Paragraph 113 of Field Manual 5-10 was the guide for this situation. Assumed to be assigned to the Group for this mission were the following units:

1200 Engineer Construction Battalion
1201 Engineer Construction Battalion
1300 Engineer Dump Truck Company
1301 Engineer Dump Truck Company
1302 Engineer Dump Truck Company
Company A, 752 Railway Operation Battalion

~~Telephone communication was established between the Group and subordinate units.~~ The design, drawings and Engineer Estimate were completed 4 November 1944.

As per Training Exercise No. 4, dated 4 November 1944 and VOCO, Army Service Forces Training Center, Camp Claiborne, Louisiana, 4 November 1944, orders were issued to select a site and design a 1,000 bed Station Hosp-



Unit History, 1067th Engr Const Gp,
(From 4 Aug. 44 to 31 Dec 44, cont.)

V CAMPAIGNS (Cont'd)

other training during this period of 6 November to 11 November 1944. This mission was to familiarize the officers and enlisted men with their assigned T/O duties in planning a typical engineer task. Heating, utilities etc. were included in this mission. Estimate of materials required was prepared and completed prior to 1700, 11 November 1944.

As per Training Exercise No. 5, dated 11 November 1944 and Field Order No. 10, Headquarters, 1067th Engineer Construction Group, dated 11 November 1944, Advance Section, Communication Zone Headquarters at Lake Charles, Louisiana the Group was assigned the mission of selecting the site, design and layout and Engineer Estimate in the construction of a port with facilities adequate to receive and store supplies for the First Army Group and the First Tactical Air Division. Units assumed to be attached to the Group for this task were:

- 1200 Engineer Construction Battalion
- 1516 Engineer Construction Forestry Company
- 1612 Engineer Petroleum Distribution Company
- 1201 Engineer Battalion
- 1202 Engineer Construction Battalion
- 1517 Engineer Forestry Company
- 1518 Engineer Forestry Company

The Engineer Construction Battalions provided own security and security of attached units against air attacks. ~~The signal officer established telephone communication with the Engineer Construction Battalions.~~

On the 13th of November 1944 at 0800 hours (CWT) the 1067th Engineer Construction Group moved by motor vehicle one (1) column to Lake Charles, Louisiana to under go special training in Port Design and layout. The Engineer Estimate of the situation was submitted to the Engineer, Communication Zone by 1200 hours (CWT) on 16 November 1944 for review. At least three (3) sites were considered in the estimate. Plans for the port were submitted 1700 hours (CWT) 25 November 1944 which included:

- Ship wharfs
- Lighterage terminals
- Open storage
- Receiving, classification and departure yards
- Class II supplies unloading and storage facilities
- Warehouse and transit sheds
- Road and railroad systems
- Housing facilities
- Electric power plants for port operation
- Construction schedules and progress charts
- Material requirements
- Construction troops and equipment requirements

At 0700 hours (CWT), 25 November 1944, the 1067th Engineer Construction Group moved one column by motor vehicle to Camp Claiborne, Louisiana for further training and arrived Camp Claiborne 1100 hours (CWT) 25 November 1944.

DECLASSIFIED NND 735017
AUTHORITY BY: J. NARA DATE: 2/17

Unit History, 1067th Engr Const Gp.
(From 4 Aug 44 to 31 Dec 44.)

V. CAMPAIGNS (Cont'd)

Twelve enlisted men of the Group were selected to appear before the Office of the Chief Engineer Inspecting team on 21 November 1944. The unit received the rating of Excellent.

On 22 November 1944 Brigadier General GUERRE and MILLER from Headquarters of Camp Claiborne, visited Group Headquarters.

The following are statistics concerning the status of the Group as of 2 December 1944:

Training:

1. Basic and individual technical training completed.
2. Unit training completed.
3. Malaria control course completed.
4. Equipment, individual and unit, prescribed in appropriate T/B and T/E has been used.
5. All field exercises engaged by the unit with 100% participation.

Firing:

1. Record and familiarization firing completed by unit.

Supervision of Unit:

1. Training tests given by the Inspector General and Office of the Chief Engineer Inspection Teams received the rating of Excellent.
2. Performance of unit has been considered Satisfactory.

Conclusion and Recommendation:

The unit is ready for overseas movement except for filling the shortage of personnel. The unit is qualified to perform its duties and assigned mission. Deficiencies in personnel administration and administration records have been corrected. Issue of clothing and equipment, combat serviceable is in process.

30 November 1944 pursuant to VOCO, Headquarters 1067th Engineer Construction Group and Training Exercise No. 6 dated 30 November 1944, the unit had been directed to construct a highway bridge to replace the one that had been "destroyed" at Effie, Louisiana near Marksville, Louisiana. The mission of the Exercise is to design and layout bridge. The design and layout was completed on 9 December 1944. Survey party moved to the site and subsisted itself in the field while obtaining field data.

9 December 1944 Training Exercise No. 7 was issued and pursuant to VOCO, Headquarters, 1067th Engineer Construction Group, "Advance Section Communication Zone", Camp Claiborne, Louisiana, the unit was assigned the mission to develop and advance landing strip in the vicinity of Camp Claiborne, Louisiana, into a field airdrome. The design and layout of the field airdrome for use by B-29 bombers was completed 23 December 1944

DECLASSIFIED
NND 735017
AUTHORITY
BY LS NARA DATE: 2/17

Unit History, 1067th Engr Const Gp;
(From 4 Aug 44 to 31 ec 44.)

V CAMPAIGNS (Cont'd)

which included soil survey, layout and design drainage system, runways, taxiway, hard standing, control towers, shelters, shops, warehouse and other buildings. The master plan was submitted in accordance with paragraph 80 Technical Manual 5-255. Completion date, 23 December 1944.

Warning Orders for overseas destination were issued by the Commanding General, Army Service Forces, Washington, D.C. for the 1067th Engineer Construction Group on 22 November 1944 but movement orders had not been received. All enlisted men of the unit had filled the required POM subjects prior to 22 November 1944. Ten enlisted men (in addition to medical personnel) were expected to fill the T/O vacancies that were ~~be~~ created in the unit by the transfer of all personnel physically unfit for overseas assignment. Replacements were expected to arrive about 2 December 1944. Major portion of replacements arrived 9 December 1944.

On 11 December 1944 ninety percent of all boxes and crates for overseas shipment of organizational T/E equipment had been constructed. Eighty five percent of organizational T/E equipment had been received. Clothing and individual equipment shortages were requisitioned by the unit on 13 December 1944. The final man-to-record check had been made and authorization for an additional five day furlough plus travel time was given to the enlisted personnel to complete the required POM furlough time authorized.

The required subjects (lectures) on POM subjects, such as censorship, movement of troops overseas, personal affairs, etc, were completed by 31 December 1944. The first shipment of organizational equipment was ninety five percent complete by 31 December 1944.

SECTION VI

BATTLES - None

SECTION VII

COMMANDING OFFICERS IN IMPORTANT ENGAGEMENTS - None

SECTION VIII

LOSSES IN ACTION: OFFICERS AND MEN - None

SECTION IX

FORMER AND PRESENT MEMBERS WHO HAVE DISTINGUISHED
THEMSELVES IN ACTION - None

DECLASSIFIED
NAD 735017
AUTHORITY
BY LS NARA DATE: 2/17

HEADQUARTERS
1067TH ENGINEER CONSTRUCTION GROUP
Camp Claiborne, Louisiana

CEE/b1 b

GENERAL ORDERS)
)
NUMBER 1)

11 September 1944

Pursuant to authority contained in AR 600-20 the undersigned hereby assumes command of the 1067th Engineer Construction Group, Camp Claiborne, Louisiana.

Clifton A Pratt
CLIFTON A PRATT
Major CE

DECLASSIFIED
NND 735017
AUTHORITY
BY: J. NARA DATE: 2/12

COPY

COPY

COPY

1067th Engr. Const. Gp.,
Vicinity Stille, La.,
1200, 25 October 1944.

FIELD ORDER #8

Maps: Boyce (La) Quadrangle, Grid Zone "C".

E X T R A C T

* * * * *

2. a. Headquarters and Headquarters Company of the 1067th Engr. Const. Gp. will move by motor transportation from the present BIVOUAC AREA (605.3-885.2) to CAMP CLAIBORNE, LA., for further training.

* * * * *

MCCUTCHEN
Colonel, C.E.
Commanding

OFFICIAL:
BROWN
1st Lt, C.E.
Actg. S-3

A CERTIFIED TRUE EXTRACT

Stanley K. Brown
STANLEY K. BROWN
Capt., C.E., Adjutant
1067th Engr Cons Gp

DECLASSIFIED
NND 735017
AUTHORITY
BY 15 NARA DATE 2/17

C O P Y

C O P Y
RESTRICTED

C O P Y

ARMY SERVICE FORCES
Eighth Service Command
Army Service Forces Training Center
Camp Claiborne, Louisiana

300.4-(27)

10 November 1944

Subject: Orders.

To : See Distribution.

The 1067th Engr Construction Gp consisting of eleven (11) officers, two (2) warrant officer and seventy-eight (78) EM, WP Lake Charles, La o/a 12 Nov 44 by govt mtr on TDY approx ten (10) days in connection w/tng activities.

This is a TCS and upon compl of TDY at Lake Charles, LA, unit will return proper sta Cp Claiborne, La.

The CO of this unit, Col ROY M McCUTCHEM, O8 875, CE, will make necessary arrangements for mtr convoy travel.

Post Ord O will furnish necessary mtr transportation.

Rat in kind will be utilized for tvl and TDY.

TDN. 501-31 P 433-01, 02, 03, 04, 05, 07, 08 A 212/50425.

Auth: VOCC (telephonic instructions) 8th SvC, 6 Nov 44.

By command of Brigadier General GUERRE:

(seal)

OFFICIAL

JOSEPH N. ROBERSON,
Major, Inf.,
Acting Adjutant General.

JOSEPH N. ROBERSON
Major, Inf.,
Acting Adjutant General

DISTRIBUTION:

- 1 - TAG, Attn: Operations Br, Washington 25 DC
- 1 - CG, 8th SvC
- 15 - CO, 1067th Engr Construction Gp
- 5 - Dir Pers Div, this Hq
MR Sec (3)
- 2 - Post Ord O
- 1 - Cp T O
- 1 - Dir Tng Div this Hq
- 2 - file

A CERTIFIED TRUE COPY

Stanley K. Brown
STANLEY K. BROWN
Captain, CE
Adjutant, 1067th ECG

(b)

DECLASSIFIED
NND 735017
AUTHORITY
BY: J. HARA DATE: 2/17

HEADQUARTERS
 1067TH ENGINEER CONSTRUCTION GROUP
 Camp Claiborne, Louisiana

CEE/bl b

GENERAL ORDERS)
)
 NUMBER 1)

11 September 1944

Pursuant to authority contained in AR 600-20 the undersigned hereby assumes command of the 1067th Engineer Construction Group, Camp Claiborne, Louisiana.

Clifton A Pratt
 CLIFTON A PRATT
 Major CE

67
10/21/1944

Former Brazilian Visits Brothers In Armed Forces

Mrs. Edward Carmichael, formerly Miss Virginia Pratt, of Brazil, now of Hartford, Conn., is visiting her husband's home folks in Knightsville and calling on friends in Brazil. Mrs. Carmichael went to Terre Haute today to visit her brother, Major Clifton A. Pratt and family. Since his graduation from Brazil High School and Rose Polytechnic Institute he has acquired several military ranks and a family. The children are Clifton Pratt II and Michael Houston Pratt, the latter two weeks old. Major Pratt expects to be re-assigned to a reconstruction battalion.

Mrs. Carmichael also had the pleasure of meeting her other brother, Capt. William S. Pratt, who has just arrived home from Australia and New Guinea after 2½ years and is now visiting his parents, Mr. and Mrs. Herbert A. Pratt at Hartford, Conn., and his wife's folks at New Hartford,

Conn. Capt. Pratt got his first look at his youngest child, William S. Pratt, aged 2, and got acquainted with his elder child, Marion Louise, who is three years old now and was six months old when he last saw her. Capt. Pratt will enjoy a rest before reporting to Asheville, N. C., for further training and re-assignment. Capt. Pratt is a graduate of Brazil High School and Rose Polytechnic Institute.

[REDACTED]



(d)

OFFICER QUALIFICATIONS RECORD ARMY SERVICE FORCES

Read the form completely before you answer any of the questions. If a question does not apply to your particular case, write "Does not apply". If in doubt about the answer to a question, leave it blank. An experienced officer will assist you in answering such questions. Do not use blocks in right margin.

(1) LAST NAME FRAT			FIRST CLIFTON		MIDDLE ALLEN	(2) SERIAL NO. 0-301219	(3) ARM OR SERVICE Corps of Engineers
(4) PRESENT GRADE HELD Major AM		DATE OF GRADE 9 Oct. 1942	(5) SERVICE (CIRCLE) <input checked="" type="radio"/> (GENERAL) <input type="radio"/> LIMITED		(6) ENTRY ON ACTIVE DUTY 1st Lt. 3 May 1942		
(7) SOURCE (CIRCLE YOUR STATUS IMMEDIATELY PRIOR TO ENTRANCE ON EXTENDED ACTIVE DUTY) <input type="radio"/> EM <input type="radio"/> CIVILIAN <input checked="" type="radio"/> (RES) <input type="radio"/> OCS <input type="radio"/> (NGUS) <input type="radio"/> RA			(8) NAME AND ADDRESS OF PRESENT STATION Hq. B.U.T.C. Camp Claiborne, Louisiana				
(9) DATE OF BIRTH 1 Oct. 1911		COUNTRY U.S.A.	(10) WIFE'S COUNTRY OF BIRTH U.S.A.		(11) MOTHER'S COUNTRY OF BIRTH U.S.A.	(12) FATHER'S COUNTRY OF BIRTH U.S.A.	
(13) MARITAL STATUS (CIRCLE) <input type="radio"/> SINGLE <input checked="" type="radio"/> (MARRIED) <input type="radio"/> SEPARATED <input type="radio"/> WIDOWED			(14) NUMBER OF DEPENDENTS OTHER THAN WIFE 1		(15) RACE (CIRCLE) <input checked="" type="radio"/> (WHITE) <input type="radio"/> NEGRO <input type="radio"/> INDIAN		

(16) PREVIOUS MILITARY EXPERIENCE.—PRIOR TO ENTRY ON EXTENDED CURRENT DUTY—BEGIN WITH FIRST TOUR OF DUTY TWO-WEEK PERIODS OF ACTIVE DUTY AS A RESERVE OFFICER TO BE SHOWN COLLECTIVELY IN REMARKS SECTION AT END OF FORM.

DATES (MONTH AND YEAR)		ARMED FORCE	HIGHEST GRADE	TYPE OF DUTY	ACTIVE OR INACTIVE (SPECIFY)
FROM— Oct. 1932	TO— May 1933	ORC	2nd Lt.	Corps of Engineers	Inactive
May 1933	Dec. 1937	ORC - Civilian	1st Lt.	Company Officer (2Yr.) Camp Constr. Conservation Corps	Active
Dec. 1937	Mar. 1941	ORC	1st Lt.	(7 Mo.), Replacement Training Center Administrative (2Yr) Corps of Engineer	Inactive

(17) CURRENT MILITARY EXPERIENCE.—INDICATE EXACT DUTY BY TITLES, SINCE ENTRY ON CURRENT ACTIVE DUTY, EXCEPT FOR TOURS OF DUTY WHICH CONSTITUTE MILITARY EDUCATION (IN SUCH INSTANCES, LIST SCHOOL AND SUBJECT OF STUDY UNDER "DUTY"). START WITH YOUR FIRST DUTY AND WORK UP TO YOUR PRESENT DUTY. OMIT TOURS OF DUTY OF LESS THAN ONE MONTH.

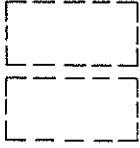
DATES (MONTH AND YEAR)		UNIT, ORGANIZATION OR STATION	HIGHEST GRADE	DUTY
FROM— Mar. 1941	TO— May 1941	Engineer School Fort Belvoir, Va.	1st Lt.	5 wks., 4th Instructors Crs., starting 3/31/41
May 1941	June 1941	Engineer School Fort Belvoir, Va.	1st Lt.	Officers Crs. for Mech. Equip., starting 5/5/41
June 1941	July 1941	Engineer School Fort Belvoir, Va.	1st Lt.	En. Hq., Supply & Road & School Const.
July 1941	Oct. 1941	37th Engr. Regt. (C) Cp. Bowie, Tex.	Capt.	H & S Co., Regt. Equip. & Motor Officer
Oct. 1941	Feb. 1942	37th Engr. Regt. (C) Cp. Bowie, Tex.	Capt.	Commanding Officer, H & S Company
Feb. 1942	March 1942	37th Engr. Regt. (C) Cp. Bowie, Tex.	Capt.	Commanding Officer, 2nd Battalion
March 1942	April 1942	E.R.C.F., Ft. Leonard Wood, Mo.	Capt.	Inspector, Tactical & Basic Section
April 1942	May 1942	WDC, ETO, Ep. Claiborne, La.	Major	Hq. w/S-3, Chief Org. Trng. & Tech. Engr. Sect.
May 1942	June 1942	" "	Major	Exec. Officer, 3rd Brig., on Flood City, Ark.
July 1942	Present	" "	Major	Assistant Director of Training

File 5-24-44

(18) MILITARY SPECIALTIES (DESCRIBE BRIEFLY SKILLS IN WHICH YOU HAVE HAD MILITARY EXPERIENCE OR EDUCATION)

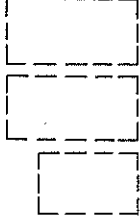
A

Troop Commander (Company officer with administrative, construction equipment and motor experience, H & S Company Commander, Battalion Commander).



B

Plans and Training Officer (EUTC Organizational Training Section and Technical Engineer Section Chief, and Assistant Director of Training).



(19) CIVILIAN EXPERIENCE.—GIVE A COMPLETE RECORD OF CIVILIAN EMPLOYMENT. START WITH YOUR LAST POSITION AND WORK BACK TO THE FIRST POSITION YOU HELD. DESCRIBE YOUR FIELD OF WORK AND POSITION AND STATE YOUR DUTIES AND RESPONSIBILITIES SO SPECIFICALLY AND IN SUCH DETAIL AS TO MAKE YOUR QUALIFICATIONS AS CLEAR AS POSSIBLE. "NAME OF EMPLOYER" SHOULD BE THE ORGANIZATION NAME, NOT THE OWNER'S OR SUPERVISOR'S. "KIND OF BUSINESS OR ORGANIZATION" SHOULD BE SPECIFIED BY TYPE OF ESTABLISHMENT AND COMMODITY OR SERVICE (E. G., MANUFACTURER OF ELEVATORS, WHOLESAL FURNITURE). "NUMBER AND CLASS OF EMPLOYEES YOU SUPERVISED" SHOULD INDICATE WHETHER SUPERVISION WAS DIRECT OR INDIRECT. "EARNED INCOME" SHOULD NOT INCLUDE TRAVEL EXPENSE AND SIMILAR ITEMS. "EXACTLY WHAT YOU DID" SHOULD SHOW YOUR FUNCTION. IN ENGINEERING THIS WOULD BE CONSTRUCTION, DESIGN, OPERATION, ETC.; IN INDUSTRY FUNCTION WOULD BE EXPRESSED AS SALES, PURCHASING, OVER-ALL MANAGEMENT, ACCOUNTING, ETC. IN OTHER OCCUPATIONS, SIMILARLY. EXACT FUNCTIONS SHOULD BE STATED TO GIVE THE CLEAREST POSSIBLE PICTURE OF YOUR EXPERIENCE.

PLACE (CITY) (STATE)	EARNED INCOME (PER ANNUM)
Annandale Mine, Boyers, Buttlar Co., Pa. FROM (MONTH AND YEAR) TO (MONTH AND YEAR)	FINAL \$ 3600 STARTING \$ 3000
May 1939 March 1941 NAME OF EMPLOYER	EXACTLY WHAT DID YOU DO?
Pittsburgh Limestone Corporation ADDRESS	Made plans and estimates for improvements and operation of mine, physical plant and other company property which included
Trick Bldg., Pittsburg, Pa. KIND OF BUSINESS OR ORGANIZATION	houses. The mine produced 1000 ton of
Production of furnace stone for blast furnaces and steel mills	stone per hour. Set sights for rooms and entries; Measured mine to calculate
NUMBER AND CLASS OF EMPLOYEES YOU SUPERVISED (SHOW DIRECT AND INDIRECT SUPERVISION)	excavation made to check on production figures
4 Directly, survey crew. 600 Indirectly, Miners, Machinists & Machine operators. MACHINES AND EQUIPMENT USED	
Shovels, trains, Machine shop, & screen-plant EXACT TITLE OF POSITION	
Plant Mining Engineer	
PLACE (CITY) (STATE)	EARNED INCOME (PER ANNUM)
Insurance Bldg. Chicago, Illinois FROM (MONTH AND YEAR) TO (MONTH AND YEAR)	FINAL \$ 2100 STARTING \$ 2100
December 1937 May 1939 NAME OF EMPLOYER	EXACTLY WHAT DID YOU DO?
Travelers Insurance Company ADDRESS	Inspected production of Manufacturing firms, operation of buss lines, truck fleets etc., to observe unsafe practices and conditions and submit recommendations for corrections as regards compensation, public liability and property damage.
Hartford, Conn. KIND OF BUSINESS OR ORGANIZATION	
Insurance of all kinds	
NUMBER AND CLASS OF EMPLOYEES YOU SUPERVISED (SHOW DIRECT AND INDIRECT SUPERVISION)	
None	
MACHINES AND EQUIPMENT USED	
None	
EXACT TITLE OF POSITION	
Safety Engineer	

PLACE Evansville (CITY) Indiana (STATE)	EXACT TITLE OF POSITION Assistant Recorder
FROM (MONTH AND YEAR) December 1932 TO (MONTH AND YEAR) May 1933	EARNED INCOME (PER ANNUM) FINAL \$ 1800 STARTING \$ 1800
NAME OF EMPLOYER Indiana State Highway Commission	EXACTLY WHAT DID YOU DO? Measured the length of all roads in
ADDRESS Indianapolis, Indiana	Vanderburgh County, Indiana
KIND OF BUSINESS OR ORGANIZATION Construction and maintenance, State Highway	
NUMBER AND CLASS OF EMPLOYEES YOU SUPERVISED (SHOW DIRECT AND INDIRECT SUPERVISION) None	
MACHINES AND EQUIPMENT USED Survey	
PLACE Terre Haute, Indiana (CITY) (STATE)	EXACT TITLE OF POSITION Assistant Coach
FROM (MONTH AND YEAR) September 1932 TO (MONTH AND YEAR) December 1932	EARNED INCOME (PER ANNUM) FINAL \$ None STARTING \$ None
NAME OF EMPLOYER Rose Polytechnic Institute	EXACTLY WHAT DID YOU DO? Line coach in football. Enrolled in
ADDRESS Terre Haute, Indiana	Architectural Engineering as remuneration
KIND OF BUSINESS OR ORGANIZATION Technical College	for services
NUMBER AND CLASS OF EMPLOYEES YOU SUPERVISED (SHOW DIRECT AND INDIRECT SUPERVISION) 30 direct and indirect	
MACHINES AND EQUIPMENT USED None	
PLACE Austin, Texas (CITY) (STATE)	EXACT TITLE OF POSITION Laborer
FROM (MONTH AND YEAR) July 1932 TO (MONTH AND YEAR) August 1932	EARNED INCOME (PER ANNUM) FINAL \$ 1500 STARTING \$ 1500
NAME OF EMPLOYER Texas State Highway Commission	EXACTLY WHAT DID YOU DO? Laborer in reinforced concrete
ADDRESS Austin, Texas	construction
KIND OF BUSINESS OR ORGANIZATION Construction & Maintenance, State Highway	
NUMBER AND CLASS OF EMPLOYEES YOU SUPERVISED (SHOW DIRECT AND INDIRECT SUPERVISION) None	
MACHINES AND EQUIPMENT USED None	
PLACE Indianapolis, Indiana (CITY) (STATE)	EXACT TITLE OF POSITION Salesman
FROM (MONTH AND YEAR) June 1932 TO (MONTH AND YEAR) July 1932	EARNED INCOME (PER ANNUM) FINAL \$ Commission STARTING \$ Commission
NAME OF EMPLOYER Lincoln Library	EXACTLY WHAT DID YOU DO? Sold Lincoln Libraries
ADDRESS	
KIND OF BUSINESS OR ORGANIZATION Publishers Lincoln Library	
NUMBER AND CLASS OF EMPLOYEES YOU SUPERVISED (SHOW DIRECT AND INDIRECT SUPERVISION) None	
MACHINES AND EQUIPMENT USED None	

ATTACH ADDITIONAL SHEETS IF NECESSARY

(20) EDUCATION. (CIRCLE HIGHEST GRADE COMPLETED, ELEMENTARY OR HIGH SCHOOL)

1 2 3 4 5 6 7 8 9 10 11 12 DID YOU GRADUATE? YES NO

.COLLEGE	NAME OF SCHOOL	DATES	DID YOU GRADUATE	DEGREE	SUBJECT MAJORED IN
		None Polytechnic Inst	1932	No	None

OTHER SUBJECTS SPECIALIZED IN (SHOW TRADE AND VOCATIONAL SCHOOLS)

(21) FOREIGN LANGUAGES.—(CHECK PROFICIENCY)

LANGUAGE (SPECIFY DIALECT IF ANY)	READ			WRITE			SPEAK			UNDERSTAND		
	EXCELLENT	GOOD	FAIR	EXCELLENT	GOOD	FAIR	EXCELLENT	GOOD	FAIR	EXCELLENT	GOOD	FAIR
Took in school Latin, German and Spanish have to review												

(22) FOREIGN RESIDENCE, BUSINESS OR STUDY EXPERIENCE (EXCLUDE VACATION TRAVEL OF LESS THAN 3 MONTHS.) INDICATE LOCATION, DURATION, AND PURPOSE OF ANY FOREIGN EXPERIENCE. (GIVE COUNTRY AND SUBDIVISION; USE OFFICIAL NAME AS OF 1958) ADDITIONAL INFORMATION CAN BE ENTERED UNDER REMARKS AT END OF FORM.

COUNTRY	DATES		RESIDENCE (CITY)	BUSINESS (CITY)	STUDY (UNIVERSITY)
	FROM—	TO—			
None					

(23) SPECIAL QUALIFICATIONS (DESCRIBE ANY WHICH YOU HAVE ACQUIRED THROUGH MEANS (SUCH AS HOBBIES OR SPORTS) OTHER THAN YOUR MAIN FIELDS OF SPECIALIZATION. LIST ONLY SUCH SKILLS AS YOU BELIEVE ARE AT A LEVEL SUFFICIENTLY HIGH TO BE UTILIZED ON THE SAME BASIS AS MAJOR OCCUPATIONAL EXPERIENCE—E. G., RADIO TRANSMITTER OPERATION UNDER FEDERAL LICENSE, MEMBERSHIP IN THE U. S. POWER SQUADRON, ETC.)

None

(24) REMARKS (STATE ANY OTHER INFORMATION YOU MAY DESIRE TO SUBMIT WHICH WILL BE HELPFUL IN ASCERTAINING YOUR BEST FIELD OF USEFULNESS).

None

ATTACH ADDITIONAL SHEETS IF NECESSARY

DATE 2 December 1973	SIGNATURE Clifton Allen Pratt
-------------------------	----------------------------------

RECOMMENDATION FOR PROMOTION OF OFFICER
AR 605-12

FROM Headquarters, 1067th Engineer Construction Group, Camp Claiborne, Louisiana Commanding General,	DATE INITIATED 11 December 1944
--	------------------------------------

THE FOLLOWING NAMED OFFICER IS RECOMMENDED FOR PROMOTION IN THE ARMY OF THE UNITED STATES.	FROM THE GRADE OF Major	TO THE GRADE OF Lieutenant Colonel
--	--------------------------------	---

LAST NAME - FIRST NAME - MIDDLE INITIAL PRATT, Clifton A.	ARMY SERIAL NUMBER 0301219	ARM OR SERVICE CG	BASIC COMPONENT ORC	AGE 33 YRS. 2 MOS.	AERO RATING YES <input type="checkbox"/> NO <input type="checkbox"/>	FLYING STATUS YES <input type="checkbox"/> NO <input type="checkbox"/>
---	--------------------------------------	-----------------------------	-------------------------------	-------------------------------------	---	---

A VACANCY IN GRADE AND ARM OR SERVICE EXISTS IN THIS COMMAND AND WILL EXIST AFTER THE PROMOTION OF ALL OTHER OFFICERS PREVIOUSLY RECOMMENDED ON WHOSE RECOMMENDATIONS FINAL ACTION HAS NOT BEEN TAKEN.

POSITION DESCRIPTION

Position occupied is that of Executive Officer, 1067th Engineer Construction Group. Supervises 3 Majors, 4 Captains, 2 1st Lts, 1 2nd Lt, 2 Warrant Officers and 80 Enlisted Men.

FOR A PERIOD OF 2 MONTHS THIS OFFICER HAS CLEARLY DEMONSTRATED HIS FITNESS FOR THE RESPONSIBILITIES AND DUTIES OF THE POSITION AND GRADE FOR WHICH RECOMMENDED. COMPLETE FOLLOWING ITEMS FOR THE PAST TWO YEARS OR SINCE E. A. O. IF LESS THAN TWO YEARS.

DUTY AND ASSIGNMENT	UNIT OR STATION	INCL. DATES	MANNER OF PERFORMANCE
Chief, Org Eng & Tech Engr Sec	Cp Claiborne, La	11 Apr 42 to 1 Jun 43	Sup
Asst Director, Mil Training	Cp Claiborne, La	2 Jun 43 to 23 Jan 44	Sup
Director, Military Training	Cp Claiborne, La	1 Apr 44 to 23 Aug 44	Sup
Executive Officer, 1067th Engr Construction Group	Cp Claiborne, La	11 Sep 44 to 11 Dec 44	Sup

MILITARY EXPERIENCE PRIOR TO CURRENT TOUR OF ACTIVE DUTY

TYPE OF SERVICE	NO. OF YEARS	HIGHEST GRADE	TYPE OF SERVICE	NO. OF YEARS	HIGHEST GRADE	TYPE OF SERVICE	NO. OF YEARS	HIGHEST GRADE
COMMISSIONED	8 6/12	1st Lt	WARRANT OFFICER			ENLISTED		

DATES OF APPOINTMENT AND PROMOTIONS							DATE OF E. A. O. CURRENT TOUR
W. O. OR FLIGHT O.	2ND LT.	1ST LT.	CAPTAIN	MAJOR	LT. COLONEL		
	25 Oct 32	31 Oct 35	11 Aug 41	9 Oct 42			29 Mar 41

EDUCATION (ENCIRCLE WHERE APPROPRIATE)																							
GRADE AND HIGH SCHOOL					COLLEGE		POST GRAD.		DEGREES		MAJOR OR SPECIALTY												
1	2	3	4	5	6	7	8	9	10	11	(12)	1	2	3	(4)	5	6	1	2	3	4	BSCB	Civil Engineering

CIVILIAN OCCUPATION - TITLE AND NAME OF COMPANY (LAST TWO POSITIONS)	NO. OF YEARS	ANNUAL EARNINGS
Plant Mining Engineer, Pittsburgh Limestone Corporation	2	\$3600
Safety Engineer, Travelers Insurance Co, Chicago, Ill	1 1/2	\$2100

REMARKS (INCLUDE STATEMENT AS TO SURPLUS FIELD GRADE OFFICERS, IF APPLICABLE)

This officer has successfully completed the following courses: 4th Instructors Course and Heavy Equipment Course at the Engineer School and the 17th General Staff Course at Command and General Staff School. There are no officers of the appropriate grade and arm or service under my jurisdiction available for assignment to this position.

BASIC DATA ON THIS FORM TO BE OBTAINED FROM W.D., A. O. O. FORM NO. 66-1, 66-2 OR 66-3.	NAME, GRADE AND ORGANIZATION OF RECOMMENDING OFFICER ROY M. McCUTCHEN, Colonel, CG Commanding, 1067th Engr Constr Gp	SIGNATURE
---	--	---------------

BRIEF OF RECORD

Name Pratt, Clifton Allen Serial No. 0-301219

Present Grade Major AUS Recommended for promotion to grade of Lt Col AUS

Age:	53
Initial Appointment:	2nd Lt <u>OL-Res</u> 17 Oct 32
Entered Active Duty:	29 Mar 41
Date of Last Promotion:	9 Oct 42
Time in present grade (on A.D.):	30 Months 8 days

Military History

Appointed from R.O.F.C. 2nd Lt OL-Res 17 Oct 32.
 Promoted 1st Lt OL-Res 31 Oct 35. Fro Capt OL-Res 11 Aug 41.
 Promoted Major AUS 9 Oct 42.
 B. A. D., 29 Mar 41.

Civilian History

Plant Mining Engineer - Pittsburgh Limestone, Corp., 1932 -
 Inspecting Engineer - The Travelers Insurance Co., 1937 - 1939.
 On Active Duty with OSS, Ft. Knox, Ky., 1933 - 1937.
 Education: B.S., Rose Polytechnic Inst.
 1/2 yr Post Grad., Rose Polytechnic Inst.

<u>Efficiency Rating:</u>	
AR 41 None 42 3.9	AR 43 6.8 GR 5.2

Remarks:

Present Assignment: Director of Military Training, Hq. Engineer Unit Training Center, Camp Claiborne, La.

Position to be filled: Same. See par 1c of basic communication.

B/R prepared (date)

Initials of officer preparing B/R

INDORSEMENTS
AR 605-12

1ST INDORSEMENT

FROM	Headquarters, Army Service Forces Training Center, Camp Claiborne, Louisiana	DATE	11 December 1944
TO	Commanding General, Eighth Service Command, Army Service Forces, Dallas 2, Texas		
<p>1. APPROVED</p> <p>2. A VACANCY IN GRADE AND ARM OR SERVICE EXISTS IN THIS COMMAND AND WILL EXIST AFTER THE PROMOTION OF ALL OTHER OFFICERS PREVIOUSLY RECOMMENDED OR WHOSE RECOMMENDATIONS FINAL ACTION HAS NOT BEEN TAKEN.</p> <p>3. STATEMENT AS TO SURPLUS FIELD GRADE OFFICERS, IF APPLICABLE: There are no officers of the appropriate grade and arm or service under my jurisdiction available for assignment to this position.</p>			
<p>L. F. GUERRE, Brigadier General, U. S. Army, Commanding.</p>			

2ND INDORSEMENT

FROM	Headquarters Eighth Service Command, ASF, Dallas 2, Texas Commanding General, Army Service Forces, Washington 25, D. C.	DATE	21 Dec 44
TO	ATTENTION: Military Personnel Division.		
<p>1. APPROVED</p> <p>2. A VACANCY IN GRADE AND ARM OR SERVICE EXISTS IN THIS COMMAND AND WILL EXIST AFTER THE PROMOTION OF ALL OTHER OFFICERS PREVIOUSLY RECOMMENDED OR WHOSE RECOMMENDATIONS FINAL ACTION HAS NOT BEEN TAKEN.</p> <p>STATEMENT AS TO SURPLUS FIELD GRADE OFFICERS, IF APPLICABLE: There are no surplus field grade officers of the appropriate arm or service under the jurisdiction of this Headquarters.</p> <p>For the Commanding General:</p>			
<p>MARVIN D. STEEN, Colonel, AGD, Adjutant General.</p>			

3RD INDORSEMENT

FROM		DATE	
TO			
<p>1. APPROVED</p> <p>2. A VACANCY IN GRADE AND ARM OR SERVICE EXISTS IN THIS COMMAND AND WILL EXIST AFTER THE PROMOTION OF ALL OTHER OFFICERS PREVIOUSLY RECOMMENDED OR WHOSE RECOMMENDATIONS FINAL ACTION HAS NOT BEEN TAKEN.</p> <p>3. STATEMENT AS TO SURPLUS FIELD GRADE OFFICERS, IF APPLICABLE:</p>			

(e)

JOURNAL
DECLASSIFIED
Authority NND 740001

24 February 1945

E X T R A C T

Engineers and other units have arrived on the Continent from the United States as follows:

<u>UNIT</u>	<u>STRENGTH</u>
<u>ALL PART OF T.M. No. 202</u>	
<u>NY 231 & 233 arrived on 17 February 1945</u>	
* * * * *	
2. 216th Armored Engineer Battalion	659
<u>BO-125, 126 & 127 arrived on 17 February 1945</u>	
* * * * *	
2. 220th Armored Engineer Battalion	664
3. 1163rd Engineer Combat Group, Hq & Hq Co	1
<u>BO-128 arrived on 19 February 1945</u>	
1. 1067th Engineer Construction Group, Hq & Hq Co.	93

J.M.C.

(f)

WIKIPEDIA

Cigarette Camp

A **Cigarette Camp** was one of a number of temporary U.S. Army "tent cities" situated principally around the French ports of [Le Havre](#)^[1] and [Marseilles](#)^[2] following their captures by Allied Forces in the wake of the Allied D-Day invasion in June 1944 and [Operation Dragoon](#) in August 1944.^[3]

Le Havre camps were located in an area the Army designated the "Red Horse" staging area and named after popular brands, including [Camps Lucky Strike](#), [Old Gold](#), and [Pall Mall](#).^[4] Another group of temporary camps established at the same time in France took their names from United States cities and are referred to as "**City Camps**".^[5] A single Cigarette Camp, [Tophat](#), was located in Antwerp, Belgium.

The Cigarette Camps were administered by the 89th Infantry Division, headquartered at [Bois-Guillaume](#), near [Rouen](#).^[6]

Contents

[Origin of names](#)

[French camps](#)

[Belgian camp](#)

[Role shift](#)

[References](#)

[External links](#)

Origin of names

The names of cigarettes and cities were chosen for two reasons:

First, and primarily, for security. Referring to the camps without an indication of their geographical location went a long way to ensuring that the enemy would not know precisely where they were. Anybody eavesdropping or listening to radio traffic would think that cigarettes were being discussed or the camp was stateside, especially regarding the city camps. Secondly, there was a subtle psychological reason, the premise being that troops heading into battle wouldn't mind staying at a place where cigarettes must be plentiful and troops about to depart for combat would be somehow comforted in places with familiar names of cities back home (Camp Atlanta, Camp Baltimore, Camp New York, and Camp Pittsburgh, among others).^[4]

The camps varied widely in size, from around 2,000 in capacity to nearly 60,000 at the largest of the "Big Three", Camps Philip Morris, Old Gold, and Lucky Strike.

French camps

The nine Cigarette Camps included:

- Camp Home Run, Sanvic: 2,000
- Camp Wings, on the grounds of the Blaville Aerodrome: 2,250
- Camp Pall Mall, at Etretat: 7,700
- Camp Herbert Tareyton, located in the Forest of Montgeon: 16,400
- Camp Twenty Grand, at Duclair: 20,000
- Camp Philip Morris, Gainneville: 35,000
- Camp Old Gold, at Ourville: 35,000
- Camp Lucky Strike, located between Cany and Saint-Valery: 58,000
- Camp Chesterfield: (unknown)

Belgian camp

- Camp Tophat was a "Cigarette Camp" located near Antwerp, Belgium, named after a popular American brand.^[7] Exact capacity is unknown, but the single camp fielded "thousands of black 20-man tents".^[7]

Role shift

By war's end, both Cigarette and City camps' roles had shifted from gateways to combat staging GIs for repatriation to the U.S., processing liberated American POWs, and temporarily confining German POWs.^[4]

Post-war, many of the camps survived with yet new roles, including housing for displaced persons at least into the mid-1950s.^[8]

References

1. 103rd Infantry Division: Albums (http://www.103didww2assn.org/Albums_Remember/VOL%20VI/Toohig,%20Michael%20F.pdf) "The major ports had camps for embarkation both ways. They were called Cigarette Camps from their names. When the ports opened up that is where they would keep people and then send them to the front. Then when the war ended that is how they sent people out through the Cigarette Camps. Famous Cigarette Camps were in Marseilles and Le Havre."
2. "Cigarette Camps" (<http://www.skylighters.org/special/cigcamps/cigintro.html>). *Skylighters*. Retrieved 29 July 2019. "And there were additional embarkation camps in Southern France, north of Marseilles, and, of course, Camp Tophat near Antwerp, Belgium."
3. Sawyer and Mitchell, Victory Ships and Tankers: HAER Report (http://www.marad.dot.gov/documents/Private_Frederick_C_Murphy_HAER_Report.pdf). "The ship made crossings in 1946 carrying troops between the European Theater of Operations, especially Le Havre, France, and New York City, New York. From Le Havre, the ship often left from the area known as the 'Cigarette Camps'.", p. 24

4. ["The Cigarette Camps: Introduction"](http://www.skylighters.org/special/cigcamps/cigintro.html) (<http://www.skylighters.org/special/cigcamps/cigintro.html>). *Skylighters*. Retrieved 29 July 2019.
5. ["The City Camps of Reims"](http://www.skylighters.org/citycamps/) (<http://www.skylighters.org/citycamps/>). *Skylighters*. Retrieved 29 July 2019.
6. 89th Infantry Division: [Cigarette Camps](http://www.89infdivww2.org/combat/vevj3.htm) (<http://www.89infdivww2.org/combat/vevj3.htm>)
7. ["Camp Tophat"](http://www.skylighters.org/special/cigcamps/camptophat.html) (<http://www.skylighters.org/special/cigcamps/camptophat.html>). *Skylighters*. Retrieved 29 July 2019.
8. ["Camp Herbert Tareyton"](http://www.skylighters.org/special/cigcamps/cmptareyton.html) (<http://www.skylighters.org/special/cigcamps/cmptareyton.html>). *Skylighters*. Retrieved 29 July 2019. "Displaced persons were living in former American Nissen huts in 1955"

External links

- ["WWII Veteran and Grandson Retrace Journey Together Using Google Earth"](https://m.huffpost.com/us/entry/us_3329419) (https://m.huffpost.com/us/entry/us_3329419). Huffington Post. 24 May 2013. Locating Camp Twenty Grand.
-

Retrieved from "https://en.wikipedia.org/w/index.php?title=Cigarette_Camp&oldid=918039324"

This page was last edited on 26 September 2019, at 18:32 (UTC).

Text is available under the [Creative Commons Attribution-ShareAlike License](#); additional terms may apply. By using this site, you agree to the [Terms of Use and Privacy Policy](#). Wikipedia® is a registered trademark of the [Wikimedia Foundation, Inc.](#), a non-profit organization.

(8)

~~SECRET~~

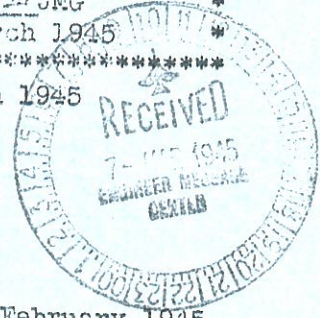
HEADQUARTERS

DECLASSIFIED
Authority NND 740001

NORMAN DISTRICT
BY BASE SECTION
CORPS HQ OF OPNS
562 US ARMY

* ~~SECRET~~ *
*Auth: CG, Northern Dist *
*Init: JMG *
*Date: 4 March 1945 *

4 March 1945



30407

AG 370.5

SUBJECT: Movement Orders No. 3-48.

TO : Commanding Officer, 1067 Engineer Construction Group.

1. Movement Orders No. 2-256, this headquarters, dated 28 February 1945 and Movement Orders No. 3-13, this headquarters, dated 3 March 1945 pertaining to the movement of the 1067 Engineer Construction Group are rescinded.
2. The 1067 Engr Const Gp Hq & Hq Co will proceed without delay by rail and/or Gov't vehicle from Camp Twenty Second to Liege, Belgium reporting on arrival to the Engineer, Advance Section, Com Z.
3. An advance party will precede the unit by twenty four (24) hours, reporting on arrival to the Engineer Continental Advance Section at Namur (J-9312).
4. Organizational equipment on hand will accompany the unit.
5. An arrival report will be submitted to the Commanding Officer, 1067 Engr Const Gp to the Commanding General, Continental Advance Section.
6. Teleprints will be sent by the Commanding Officer, 1067 Engr Const Gp to the Commanding General, Com Z and to the Engineer, Northern District, Normandy Base Section, reporting time of departure and estimated time of arrival of the unit.
7. Authority: TWX 587 CG, Com Z, EX-15112.
8. ~~TOWNSHIP~~ 50-112-1-463-38 A 225/50463. Travel by Gov't vehicle is authorized.

By command of Brigadier General PHILIPS:

J. M. Gardner
J. M. GARDNER
Captain, AGD
Asst Adjutant

DISTRIBUTION:

- | | |
|---------------------------|-----------------------------|
| CG, Com Z, APO 887 (13) | Lt Col Lyons, 16th Port (1) |
| 42nd MRU, APO 887 (3) | Maj Winslow, 16th Port (1) |
| CG, NBS, APO 562 (6) | S-1 (1) |
| CG, CON AD SEC (3) | S-3 (2) |
| CO, 1067 Engr C Gp (4) | S-4 (1) |
| Engr Northern Dist (1) | Sig Msg Cen (1) |
| DTO (3) | AFU 505 (1) |
| Northern Dist Trans O (3) | AFU 582 (1) |
| Troop Move, 16th Port (1) | |

DOWNGRADED 7 Jun 47
per Auth. CG USFET

..... 1st Lt CE

~~SECRET~~

CIRCUIT
NR.

PRECEDENCE

TRANSMISSION INSTRUCTIONS

SPACES WITHIN HEAVY LINES FOR SIGNAL USE ONLY

DECLASSIFIED
Authority NND 740001

GOING MESSAGE

FROM
(A)

ORIGINATOR

DATE

15 10A

NO. ~~1000~~ 1000000 100 000

15 FEBRUARY 1945

MESSAGE INSTRUCTIONS

GR.

ACTION TO: (1) ENGINEER, NORMANDY BASE SECTION, APO 562

REF. NO.

EX 14184

CLASSIFICATION

INFO TO: (W) (2) ENGINEER, ADVANCE SECTION, APO 114

TECHNICAL MULTIPLE MESSAGE

ORDERS HAVE BEEN RECEIVED BY THIS OFFICE TO MOVE THE MAIN BODY OF THE ONE ZERO
 SIX SEVEN ENGINEER CONSTRUCTION GROUP OMA HEADQUARTERS AND HEADQUARTERS COMPANY
 ON OR ABOUT TWO SEVEN FEBRUARY FROM THE STAGING AREA TO LIEGE PAREN VICTOR NINE
 FIVE ZERO NINE ZERO PAREN REPORTING TO ENGINEER OMA ADVANCE SECTION OMA UPON
 ARRIVAL AT DESTINATION OMA AND THAT AN ADVANCE DETACHMENT PRECEDE MOVEMENT OF
 THE MAIN BODY BY FOUR EIGHT HOURS OMA MOVING TO NAMIC PAREN VICTOR JIG NINE THREE
 ONE TWO PAREN REPORTING TO THE ENGINEER OMA ADVANCE SECTION AND REQUEST THIS OFFICE
 BE NOTIFIED BY TALK WILLIAM XRAY OF TIME OF DEPARTURE AND EXPECTED ARRIVAL, PAREN TO
 ENGINEER OMA NORMANDY BASE SECTION ~~SECTION~~ STAGED MOBILE PAREN SUBJECT UNIT IS CURRENTLY
 ASSIGNED TO ADVANCE SECTION AND ARRIVED TWO ONE FEBRUARY ON THE CONTINENT

DOWNGRADED 7 Jan 87
per Auth. CG USFET

1st Lt CE

DISTRIBUTION:

COORDINATED WITH

THI or TOR

Opr.

Originating Division

Precedence

NAME AND RANK TYPED

TEL. NO.

TIME CLEARED

Necessary Staff Coordination has been accomplished

Authenticating Signature

2457

DECLASSIFIED
Authority NND 740001

~~SECRET~~

HQ DISTRICT "A"
NORMANDY BASE SECTION
COM Z, EUROPEAN T OF OPNS
APO 562, US ARMY

* ~~SECRET~~ *
Auth: CG, Dist "A"
*Init: Jm A JMG *
*Date: 28 Feb 1945 *

28 February 1945

AG 370.5

SUBJECT: Movement Orders No. 2-236

TO : Commanding Officer, 1067th Engineer Combat Group.

1. The 1067 Engr C Group will proceed without delay by rail and/or Gov't vehicle from Camp Lucky Strike to Lie e, Belgium. *RAS*

2. Organizational equipment will accompany the unit.

3. A teleprint will be sent by the Commanding Officer, 1067 Engr Combat Group to the Engineer, District "A", NBS reporting time of departure and estimated time of arrival of the unit.

4. Authority: TWX 536 CG, Com Z EX 13960.

DOWNGRADED 7 Jan 47
per Auth. CG USFET

..... 1st Lt CE

~~SECRET~~

53352



ETOUSA

STAFF MESSAGE CONTROL

T

OUTC **DECLASSIFIED** UNCLASSIFIED MESSAGE

Authority NND 740001

303/2001

DATE: 11 OCT 1994 BY: [unclear]

~~CONFIDENTIAL~~

CLASS

✓

AGENCY : AG Ops (Capt Clark, Coord TC, G-3)

INFO TO : Headquarters Base Section
Adv Section Cont Sect

REF NO : BX-13112

Desire your Headquarters issue the necessary orders to move Headquarters and Headquarters Company, 1067 Engineer Construction Group without delay consisting of 12 officers, 2 Warrant Officers and 80 enlisted men by organic motor and/or rail transportation with individual and organizational equipment less shortages from staging area to Liege (VK-5030) for permanent duty reporting upon arrival to Engineer Advance Section and will submit a report of arrival to Commanding General Advance Section. Unit arrived in staging area 21 February 1945.

Request that an Advance Section precede the main body by 24 hours, reporting to the Engineer Advance Section, Namur (VJ-9312).

Estimated time of departure and estimated time of arrival are to be furnished, this Headquarters.

ORIGINATOR : AG Ops (Capt Clark, Coord TC, G-3)

INFO : G-3
AG Postal
TC
Engrs.
Signals
AG Records



DOWNGRADED 7 Jan 47
per Auth. CG USFET
..... 1st Lt CE

13

COPY No.

DECLASSIFIED
Authority NND 740001

JUN 1 1945

T. JAMES



FROM: OFFICE OF THE CHIEF ENGINEER, WASHINGTON FIELD, WDC 20545
TO: (1) OFFICE OF THE CHIEF ENGINEER, WDC 20545 (CMB)
INFO: (2) THE TRUCK DIVISION, WASHINGTON FIELD, WDC 20545 (CMB)

BT *[Handwritten initials]* PRIORITY

1318 DEPT. OF THE CHIEF ENGINEER, WASHINGTON FIELD, WDC 20545
1945 PD

1263 DEPT. OF THE CHIEF ENGINEER, WASHINGTON FIELD, WDC 20545
1254 DEPT. OF THE CHIEF ENGINEER, WASHINGTON FIELD, WDC 20545

ON 6 MAR 1945 PD

3753 DEPT. OF THE CHIEF ENGINEER, WASHINGTON FIELD, WDC 20545
NO DEPT. OF THE CHIEF ENGINEER, WASHINGTON FIELD, WDC 20545

1767 DEPT. OF THE CHIEF ENGINEER, WASHINGTON FIELD, WDC 20545
DEPT. OF THE CHIEF ENGINEER, WASHINGTON FIELD, WDC 20545

DEPT. OF THE CHIEF ENGINEER, WASHINGTON FIELD, WDC 20545

DEPT. OF THE CHIEF ENGINEER, WASHINGTON FIELD, WDC 20545

DEPT. OF THE CHIEF ENGINEER, WASHINGTON FIELD, WDC 20545

DEPT. OF THE CHIEF ENGINEER, WASHINGTON FIELD, WDC 20545

DEPT. OF THE CHIEF ENGINEER, WASHINGTON FIELD, WDC 20545

DOWNGRADED 7 Jun 47
per Auth. CG USFET
1st Lt. CE

DECLASSIFIED
Authority NND 740001

~~SECRET~~
HEADQUARTERS
NORTHERN DISTRICT
NORMANDY BASE SECTION
COM Z EUROPEAN T OF OPNS
APO 562 US ARMY

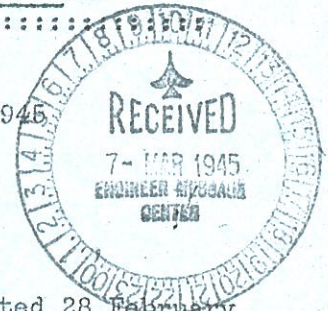
.....
SECRET :
:Auth: CG, North Dist:
:Date: 2 March 1945 :
:Init: G.K. WDK :
.....

AG-370.5

SUBJECT: Movement Orders No. 3-13

TO : Commanding Officer, 1067 Engineer Construction Group.

2. March 1945
304014



So much of Movement Order No. 3-136, Hq. District "A", dated 28 February 1945 as reads 1037 Engineer Combat Group is amended to read 1067 Engineer Construction Group.

By command of Brigadier General PHILIPS:

[Handwritten signature and initials, possibly 'W.D.K. King']

William D. King
WILLIAM D. KING
Captain AGD
Ass't. Adjutant

DOWNGRADED 7 Jan 47
per Auth. CG USFET

- 1 -

~~SECRET~~

1st Lt CE

Request for Orders

Auth: CG ETOUSA
Init: _____
Date: _____

TO FROM
AG
Opns
Thru
G-4
C-5

1. Request that (Confirmatory) Movement Orders be issued to move unit listed on or about _____ (Date)

UNIT: 1067
STRENGTH: OFF _____ ANC _____ W.O. _____ E.M. _____

Move from: Town _____ Coordinates: _____ Section _____
Move to : Town _____ Coordinates: _____ Section _____

Report to: _____

Mode of travel: _____

Type of duty: _____

Equip. to be taken: _____

Reason for move: _____

DOWNGRADED 7 Jan 47
per Auth. CG USFET
1st Lt CE

Remarks: ⁴³ UNIT ARRIVED IN STATE ... REQUEST THAT AN ADVANCE DETACHMENT PRECEDE THE MAIN BODY BY 24 HOURS, REPORTING TO THE ENGINEER, ADVANCE SECTION, NAMUR (vJ-9312).
2. a. Above unit is presently assigned to _____ by T/A # _____, Hq. _____ dated _____

b. Request units be relieved from above assignment and re-assigned to _____

3. Necessary coordination has been effected thru technical channels of sections of origin and destination. Quartering facilities are available.

4. Request that Sections concerned be furnished copies of necessary orders.

5. Request that _____ be authorized to _____

Distribution: Copies 1-2-5 AG thru C-5
4 Engr Main File
5 Troops Div File
6 TOM
7 Reading file

SIG. _____

01 02 03 04 05 06 07 08 09 10 11 12 13 14 15 16 17 18 19 20 21 22 23 24 25 26 27 28 29 30 31 32 33 34 35 36 37 38 39 40 41 42 43 44 45 46 47 48 49 50 51 52 53 54 55 56 57 58 59 60 61 62 63 64 65 66 67 68 69 70 71 72 73 74 75 76 77 78 79 80 81 82 83 84 85 86 87 88 89 90 91 92 93 94 95 96 97 98 99 00
" ~~SECRET~~ " "
" Auth: CG ETOUSA " "
" Init: " "
" Date: " "
01 02 03 04 05 06 07 08 09 10 11 12 13 14 15 16 17 18 19 20 21 22 23 24 25 26 27 28 29 30 31 32 33 34 35 36 37 38 39 40 41 42 43 44 45 46 47 48 49 50 51 52 53 54 55 56 57 58 59 60 61 62 63 64 65 66 67 68 69 70 71 72 73 74 75 76 77 78 79 80 81 82 83 84 85 86 87 88 89 90 91 92 93 94 95 96 97 98 99 00

DECLASSIFIED
Authority NND 740001 rest for Orders

TO FROM
AG
Opns
Thru
G-4

1. Request that (Confirmatory) Movement Orders be issued to move unit listed on or about _____ (Date)

UNIT: _____
STRENGTH: OFF _____ ANC _____ W.O. _____ E.M. _____

Move from: Town _____ Coordinates: _____ Section _____

Move to : Town _____ Coordinates: _____ Section _____

Report to: _____

Mode of travel: _____

Type of duty: _____

Equip. to be taken: _____

Reason for move: _____

DOWNGRADED TO CONFIDENTIAL
per Auth. CG USFET
..... 1st Lt CE

Remarks: THIS UNIT IS TO BE RELIEVED BY AN ADVANCE DETACHMENT PRECEDE THE MAIN BODY BY 24 HOURS, REPORTING TO THE ENGINEER, ADVANCE SECTION, NAMUR (vJ-9312).

2. a. Above unit is presently assigned to _____ by T/A # _____, Hq. _____ dated _____

b. Request units be relieved from above assignment and re-assigned to _____

3. Necessary coordination has been effected thru technical channels of sections of origin and destination. Quarters facilities are available. EJM

4. Request that Sections concerned be furnished copies of necessary orders. AC

5. Request that _____ relative to _____

- Distribution: Series 1-1-5 AG buru P-5
4 Engr Main file
5 Troops Div file
✓ 6 TOM
7 Reading file

SIG. _____

~~CONFIDENTIAL~~ (h)
HEADQUARTERS
ADVANCE SECTION
COMMUNICATIONS ZONE
APO II3

AG 370. 5 OpTps

SUBJECT: Movement Order No. I33

TO : Units Concerned.

DOWNGRADED 7 Jan 47
per Auth. CG USFET

..... 1st Lt CE

I. The following units will proceed on or about dated indicated from present locations as listed to Marseille Staging Area (bT-46I5) for permanent change of station, reporting upon arrival to the Commanding General, Delta Base Section:

a. The IO58th Engineer Port Construction and Repair, Hq & Hq Co (approximate strength I6 officers and 22I enlisted men) (2% overstrength allowed) from Urmitz, Germany (F-8300) on or about 25 May I945.

b. The I533d Engineer Dump Truck Company (approximate strength 4 officers and IO4 enlisted men) (2% overstrength allowed) from Remagen, Germany (F.66I8) on or about 26 May I945.

c. The 3063d Engineer Dump Truck Company (approximate strength 4 officers and 83 enlisted men) (2% overstrength allowed) from Furth, Germany (O-368I) on or about 26 May I945.

d. The 3065th Engineer Dump Truck Company (approximate strength 4 officers and IO5 enlisted men) (2% overstrength allowed) from Bad Kreuznach, Germany (M-0939) on or about 26 May I945.

e. The IO67th Engineer Construction Group, Hq & Hq Co (approximate strength I4 officers and 77 enlisted men) (2% overstrength allowed) from Bonn, Germany (F-5636) on or about 27 May I945.

f. The I636th Engineer Construction Battalion (approximate strength 30 officers and 870 enlisted men) (2% overstrength allowed) from Budesheim, Germany (M-I205) on or about 26 May I945.

g. The IO62d Engineer Forestry Company (approximate strength 5 officers and I44 enlisted men) (2% overstrength allowed) from Waldau, Germany (F.4225) on or about 27 May I945.

h. The IO63d Engineer Forestry Company (approximate strength 5 officers and I50 enlisted men) (2% overstrength allowed) from Messel, Germany (M-7249) on or about 27 May I945.

2. Each unit requiring rail transportation will contact the nearest RTO immediately and make necessary arrangements to secure required rail cars and proceed to load in order that organization will leave on date specified.

- I -

~~CONFIDENTIAL~~

ETOUSA
STAFF MESSAGE CONTROL
OUTGOING CLASSIFIED MESSAGE

~~SECRET~~

TWX CONFERENCE 15 MAY 1945

SPECIAL

ETOUSA

NYPE

Col C S Cobb Jr
Col C H Beardsley :
Col C W Powell
Lt Col R M Bynum
Lt Col Wetherill
Maj G A Nuffer
Maj R K Lewis

Col H C Chuck
Col E B Fletcher
Maj R H Nies
Maj W H Ouderkirck

E X T R A C T

* * * * *

1. Unit moving from ETO to US

a. Delete

Priority 11 thru 16 inclusive now appear on Priority List
No. 3. (Units going to Casablanca).

Priority 29 thru 44 inclusive (now appear on Priority List
No. 21 (Units going to Trinidad).

b. Add:

<u>Desig</u>	<u>Unit</u>	<u>Priority Number</u>
First	US Army, Hq & Hq Co and Hq Sp Trps	28 A

Priority List No. 4 - Units moving from ETO to POA direct:

1523	Hq & Hq Co, Engr Const Gp	2
1524	Hq & Hq Co, Engr Const Gp	3
1067	Hq & Hq Co, Engr Const Gp	4
1408	Hq & Hq Co, Engr Base Depot	5
1409	Hq & Hq Co, Engr Base Depot	6
1410	Hq & Hq Co, Engr Base Depot	7
1053	Hq & Hq Co, Engr PC & R Gp	8
1061	Hq & Hq Co, Engr PC & R Gp	9
1058	Hq & Hq Co, Engr PC & R Gp	10
1326	Engr Gen Serv Regt	11
1331	Engr Gen Serv Regt	12
1330	Engr Gen Serv Regt	13
1332	Engr Gen Serv Regt	14
1329	Engr Gen Serv Regt	15

DOWNGRADED 7 Jan 47
per Auth. CG USFET
..... 1st Lt CE

DATED MAY 121537B 145

~~SECRET~~ PRIORITY

FROM : Com Zone signed Lee (Multiple)

ACTION TO : Delta Base Section

INFO TO : Sixth Army Group; Twelfth Army Group; Normandy Base Section; Seine Section; Oise Intermediate Section; Channel Base Section; Advance Section; CONAD; GFRC

REF NO : EX-43721

E X T R A C T

PRIORITY IA:

1339 Engr Const Bn
 1777 Engr Const Bn
 1326 Engr GS Regt
 1331 Engr GS Regt
 1330 Engr GS Regt
 1333 Engr GS Regt

PRIORITY IIB:

1058 Engr PC & R Group, Hq/Hq Co
 1532 Engr DT Co
 3061 Engr DT Co
 3062 DT Co
 3063 DT Co
 3065 Engr DT Co
 1533 Engr DT Co

PRIORITY IB:

1053 Engr PC & R Group, Hq/Hq Co
 1061 Engr PC & R Group, Hq/Hq Co
 1324 Engr GS Regt
 1318 Engr GS Regt
 1494 Engr Maint Co
 1480 Engr Maint Co

PRIORITY III:

740 Engr B Equip Co
 748 Engr B Equip Co
 1636 Engr Const Bn
 1524 Engr Const Group, Hq/Hq Co
 1067 Engr Const Group, Hq/Hq Co
 760 Engr Parts Supply Co
 1385 Engr Pet Dist Co
 2814 Engr Pet Dist Co
 395 Engr Depot Co
 799 Engr Forest Co
 1062 Engr Forest Co
 1063 Engr Forest Co
 1072 Engr Port Repair Ship
 1073 Engr Port Repair Ship

PRIORITY IIA:

1325 Engr GS Regt
 1321 Engr GS Regt
 1308 Engr GS Regt
 1523 Engr Const Grp, Hq/Hq Co
 466 Engr Depot Co
 486 Engr Heavy Shop Co
 750 Engr Heavy Shop Co
 1783 Engr Parts Supply Co
 1505 Engr Water Supply Co
 1506 Engr Water Supply Co
 657 Engr TOPO Bn (Army)
 1408 Engr B Depot, Hq/Hq Co
 1409 Engr B Depot, Hq/Hq Co
 1410 Engr B Depot, Hq/Hq Co

DOWNGRADED 7 Jan 47
 per Auth. CG USEET
 1st Lt CE

Same priority to be used in loading transports. 15 June readiness date for loading.

REF: Unnumbered Ref: 9(Believed to be ETOUSA EX-43478) (Orig G-3) (ETO OUT 93775)

COPY #30

ETO OUT 94025

~~SECRET~~

DECLASSIFIED
 Authority NND 740001

~~CONFIDENTIAL~~ ~~CONFIDENTIAL~~ OF PRIORITY

ETOUSA
 STAFF MESSAGE CONTROL
 INCOMING CLASSIFIED MESSAGE

DATED MAY 182011B '45

RECD MAY 191015B

FROM : Delta Base Section signed Ratay cite DBTPN-3984-
 DBSGC-105 (Multiple)

ACTION TO : Com Zone
 First Army; Third Army; Seventh Army; Ninth Army; Fifteenth Army; Twelfth Army Group; Oise Intermediate Section; Advance Section Com Z; Normandy Base Section; Channel Base Section; CONAD; Seine Section; Ground Force Reinforcement Command; Sixth Army Group; UK Base

REF NO : 13991

E X T R A C T

Com Zone cables EX-43478 and EX-43721 and in accordance with movement orders being issued by major Commands, move units to arrive staging area Marseilles to conform with following schedule:

* * * * *

For Fifteenth Army:

Units - Arrival Date Marseilles:

* * * * *
 395th Engineer Depot Company

30 May
 DOWNGRADED 7 Jan 47
 per Auth. CG USFET

For Advance Section Com Z:

Units - Arrival Date Marseilles:

* * * * *
 1058th Engr P C & R Gp, Hq/Hq Co 30 May
 1533rd Engr Dump Truck Co 30 May
 3063rd Engr Dump Truck Co 30 May
 3065th Engr Dump Truck Co 30 May
 1067th Engr Constr Gp Hq/Hq Co 31 May
 1636th Engr Construction Bn 31 May
 1062nd Engr Forestry Co 1 June
 1063rd Engr Forestry Co 1 June

..... 1st Lt CE

For Oise Intermediate Section:

Units - Arrival Date Marseilles:

* * * * *
 1410th Engr Base Depot, Hq/Hq Co 29 May

DECLASSIFIED
 Authority NND 740001
 ETOUSA
 STAFF MESSAGE CONTROL
 OMIING CLASSIFIED MESSAGE

DATED MAY 31 2005B '45

RECD JUNE 011506B

~~SECRET~~ - PRIORITY

FROM : Delta Base Section signed Ratay cite DBTPN-4115 DESGC-1118

ACTION TO : Com Zone to OCOT Passenger Branch.

INFO TO : Oise Intermediate Section
 Fifteenth Army; Seventh Army; Ninth Army; Seine Section;
 Channel Base Section; Adv Section Com Zone; Normandy Base Section;
 Ground Force Reinforcement Command.

REF NO : 14623

E X T R A C T

* * * * *

Following is report of units arriving Staging Area Number 1, Marseilles, for period 0001 hours to 2400 hours 30 May:

1410 Engr Base Dep Co	R-0146-C	11	2	50	2405
1408 Engr Dep Co	R-0146-A	11	2	59	0700
3065 Engr DT Co (Cld)	R-0598-S	3	0	91	0730
1058 Engr PC & R	R-0598-F	11	0	129	1940
1409 Engr Base Dep	R-0146-B	10	2	59	2000
1636 Engr Const Bn	R-0598-K	27	2	854	0900
3063 Engr DT Co	R-0598-R	4	0	83	0900
740 Engr Base Hq Co (Equip)	R-0598-L	5	0	161	0730
1532 Engr DT Co (Cld)	R-0146-EE	3	0	99	1540
3062 Engr DT Co (Cld)	R-0598-T	4	0	100	2200
1067 Engr Group	R-0598-C	8	0	80	1515
748 Engr Base Equip Co	R-0598-M	6	0	150	2000

ACTION : TC

~~SECRET~~ - PRIORITY

ETO IN 50196

DOWNGRADED 7 Jan 47
 per Auth. CG USFET

1st Lt CE

~~SECRET~~

DECLASSIFIED
Authority NND 740001 ETOUSA
FF MESSAGE CONTROL
NG CLASSIFIED MESSAGE

DATED JUN 272018B'45

~~SECRET~~

FROM : ETOUSA(Main) signed Bradley
ACTION TO : Delta Base Section
REF NO : E-62432 PRIORITY

E X T R A C T

Delete from priority list 4 B the 123 Station Hospital and Hq/Hq Company 1067 Engineer Construction Group, shipments numbers R 0598-CC and R 0598-C respectively, and add same to priority list 4 A ,destination STEAMROLLER.

Units to be shipped with present personnel, and TAT equipment only. Disregard fact that other equipment has sailed to Leguminous.

It is desired that these units embark on next STEAMROLLER trooper. Report ETD. Units will be fitted into priority accordingly.

ORIGINATOR : G-3 (RDM/CWP/2356)

* * * *

DOWNGRADED 7 Jan 57
per Auth. CG USFET
..... 1st Lt CE

~~SECRET~~

DECLASSIFIED
Authority NND 740001

~~SECRET~~
ETOUSA

STAFF MESSAGE CONTROL
OUTGOING CLASSIFIED MESSAGE

DATED JUL 022327B '45

~~SECRET~~

FROM : Com Zone signed Lee (Multiple)

ACTION TO : Port Commander Antwerp;

INFO TO : CHANOR Base Section (Main); Oise Intermediate Section;
Assembly Area Command; Delta Base Section.

REF NO : EX-64480 OP PRIORITY

E X T R A C T

* * * * *

Telecon 1 July, following units made available to Antwerp for out loading are departing immediately and will report to Port Commander upon arrival.

From Marseilles

1087 Engr Constr Gp Hq/Hq Co

From Assembly Area:

1127, 1167, 1168, 1125 Engr Combat Gp Hq/Hq Co

Personnel and vehicles will be loaded on Marine Eagle for STEAMROLLER destination.

ORIGINATOR: TC (Major Nuffer)

SECRET-OP PRIORITY

ETO OUT 17740

DOWNGRADED 7 Jan 47
per Auth. CG USFET

..... 1st Lt CE

ETUSA

DECLASSIFIED
 Authority NND 740001

SECRET MESSAGE CONTROL
 UNCLASSIFIED MESSAGE

REF ID: A66716415 145 21

NOTE: 13th Fort signed Forsythe for Gullatt

NOTICE TO: [unclear]

REF NO: [unclear]

S A T I S F Y

The table in units arrived at staging area [unclear]:

			<u>0</u>	<u>0</u>	
			<u>DAY</u>	<u>EV</u>	
1125	Inf Combat Co, H/1 Co	H-6604 H	14	65	1730, July
1127	" " " " "	" G	15	67	" "
1157	" " " " "	" J	16	65	" "
1067	" " " " "	Not available			" "
					1300 "

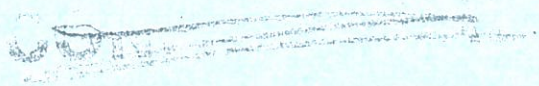
Report covers the period of 6 July from 0000 hrs to 2400 hrs.

* * * * *

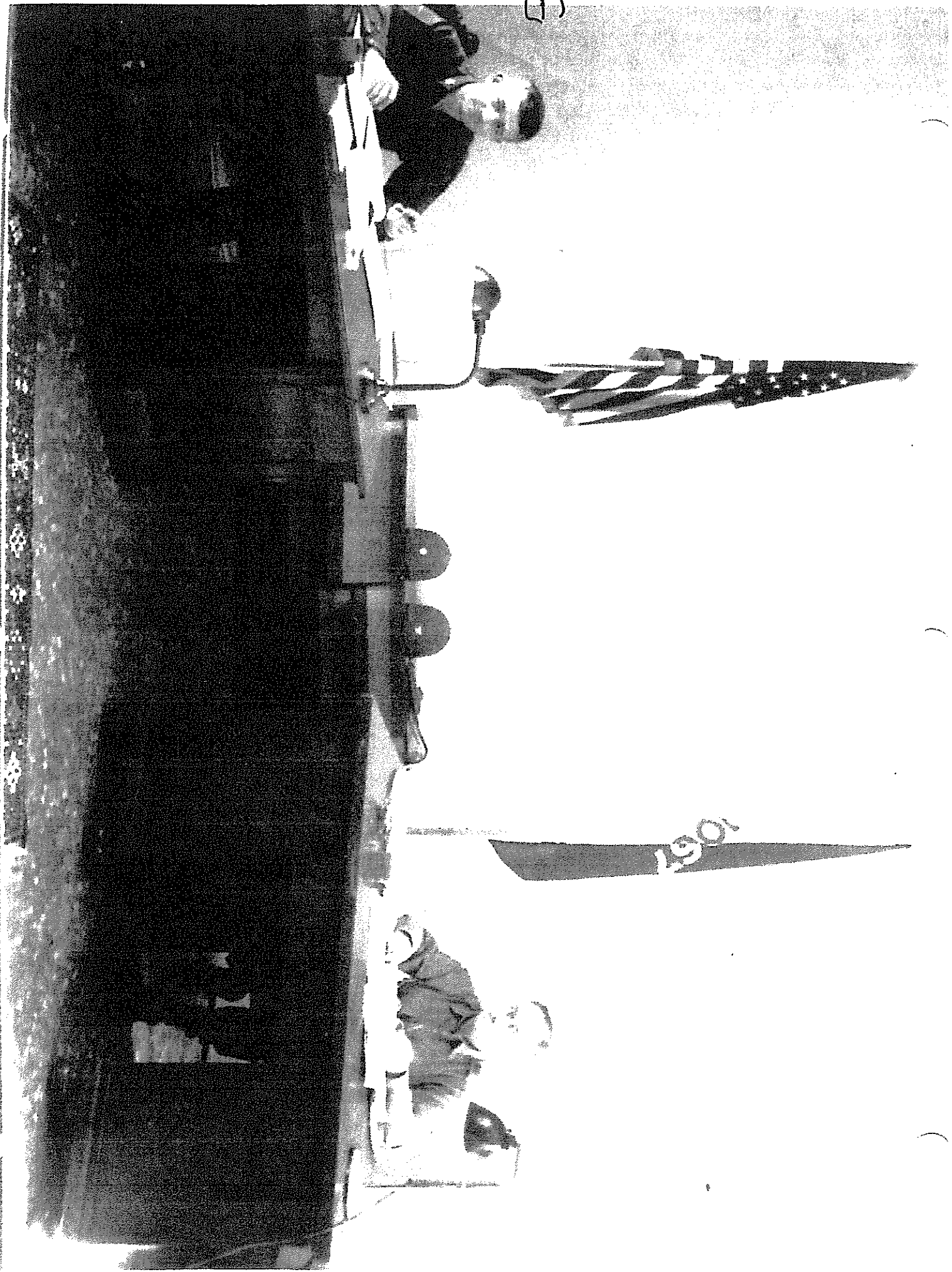
DOWNGRADED 7 Jan 47
 per Auth. CG USFET

1st Lt CE

500 71303



(1)



1961

OFFICER'S AND WARRANT OFFICER'S QUALIFICATION CARD

(20) 41 RESIDENCE: NO 8 STREET CITY STATE
 (21) NAME: STREET ADDRESS CITY STATE RELATIONSHIP: WIFE

(22) EDUCATION
 SCHOOL: HIGH SCHOOL, Rose Polytechnic Inst., Indiana
 NAME OF INSTITUTION: Rose Polytechnic Inst., Indiana
 SUBJECT MAJORED IN: Science, Civil Engineering

(23) TESTS

TEST	DATE	SCORE	TEST	DATE	SCORE	TEST	DATE	SCORE
1. BOXING			5. SHOOTING			7. EQUITATION		
2. SOFT BALL			6. ARCHERY			8. OTHER [Football]		
			4. AVIATION					

(24) PARTICIPATING SPORTS
 1. BOXING [C] [XL]
 2. SOFT BALL [C] [XL]
 3. BASE BALL [C] [XL]
 4. BASKET BALL [C] [XL]
 5. SHOOTING [C] [XL]
 6. ARCHERY [C] [XL]
 7. EQUITATION [C] [XL]
 8. OTHER [Football] [C] [XL]

(25) ACTIVE HOBBIES
 1. RADIO []
 2. PHOTOGRAPHY []
 3. RIFLE OR SHOT GUN SHOOTING []
 4. AVIATION []
 5. OTHER [Hunting & Fishing]
 (26) MAIN CIVILIAN OCCUPATION: Plant Mining Engineer
 (27) SECONDARY CIVILIAN OCCUPATION: Safety Engineer

NAME AND ADDRESS OF EMPLOYER: Pittsburgh Limestone Corp., Pittsburgh, Pa.
 DATE EMPLOYED: FROM 1929 TO 1941
 MONTHLY SALARY: \$ 300.00
 (28) QUALIFICATION IN MILITARY SPECIALTIES
 DESIGNATION: Plans & Training Officer
 DATE: 2162 1894/3
 1328 1350/4
 1331 1342
 2525 3050/4
 7110 10 Apr/5

(29) INITIAL INTERVIEW BY: Card remake (20 Jan/5)
 STANLEY K. BROWN, Capt., CE Adjutant
 DATE: 2 Jun 45

(30) REMARKS: Religious preference: Protestant; Infiltration course, 21 Dec/43; Coal aerial photo, 18 Jan/44; Objective & target chamber, 21 Aug/44; Foreign Serv: left US for WFO in Boston, Mass 6 Feb 45; Arrived WFO 20 Feb 45. Auth: Campaign Medal - European-African-Middle Eastern. Identification card No. - A-34/112; WFO in 3rd...

(31) SIGNATURE OF INTERVIEWING OFFICER: Stanley K. Brown
 (32) SIGNATURE OF INTERVIEWED OFFICER: Clinton A. Pratt

TEST	DATE	SCORE	TEST	DATE	SCORE
1. BOXING			5. SHOOTING		
2. SOFT BALL			6. ARCHERY		
3. BASE BALL			7. EQUITATION		
4. BASKET BALL			8. OTHER [Football]		
5. SHOOTING					
6. ARCHERY					
7. EQUITATION					
8. OTHER [Football]					

IMPORTANT - UNDER NO CIRCUMSTANCES WILL THIS CARD BE FOLDED, ROLLED OR CREASED
 (33) SIGNATURE OF INTERVIEWING OFFICER: Stanley K. Brown
 (34) SIGNATURE OF INTERVIEWED OFFICER: Clinton A. Pratt

(21) Remark: Left in a P. I. 10 Oct 45 arrived Kure, Hg. in Japan 22 Oct 45. Auth: Overseas serv...

(K)

[Login](#). Not a member? [Join now](#)

[Home](#) [Benefits](#) [News](#) [Entertainment](#) [Shop](#) [Finance](#) [Careers](#) [Education](#) [Join the Military](#) [Community](#)



1067th ENGINEER CONSTRUCTION GROUP

1067th ENGINEER CONSTRUCTION GROUP Constituted 5 September 1944 in the Army of the United States as Headquarters and Headquarters Company, 1067th Engineer Construction Group and activated 11 September 1944 at Camp Clairborne, Louisiana. Staged at Camp Myles Standish, Massachusetts 26 January 1945 until departed the Boston Port of Embarkation, 6 February 1945. Arrived in France 19 February 1945 and crossed into Belgium 6 March 1945. Entered Germany 20 March 1945. Served in the Army of Occupation of Germany from 2 May-5 June 1945. Departed France 9 July 1945. The unit was aboard ship (Shipment #R0698-C) enroute to the Pacific Theater at the end of World War II (15 August 1945 location). Arrived at Manila, Philippine Islands, 17 August 1945 then transferred to Okinawa. Served in the Army of Occupation of Japan from 15 November 1945-5 March 1946. Inactivated in Japan on 9 November 1946. For further Lineage and Honors see the Lineage and Honors Statement of the 44th Engineer Construction Group under the heading at Military.com. CAMPAIGN PARTICIPATION CREDIT: WORLD WAR II: Rhineland Central Europe DECORATIONS None. DISTINCTIVE INSIGNIA See under the 44th Engineer Construction Group.

[Back to Unit Page](#)

Other Links:

- [Military.com Reunion Database](#)
- [Department of Defense Reunion Database](#)

- [View All Members](#)
- [Invite a Friend](#)
- [Bulletin Board](#)
- [Related Homepages](#)
- [History and Photo](#)
- [Events & Reunions](#)
- [Member Tools](#)
- [Login to Military.com](#)
- [Join this Group](#)
- [Join a New Group](#)
- [Search for your Units](#)
- [Create your Unit Page](#)

Military.com Network: [Defense Tech](#) [DoD Buzz](#) [SpouseBuzz](#)

Services: [Army](#) [Marine Corps](#) [Navy](#) [Air Force](#) [Coast Guard](#) [National Guard](#)

About Military.com: [About Us & Press Room](#) [Advertise With Us](#) [RSS](#) [Help](#) [User Agreement](#) [Privacy Policy](#) [Mobile](#) [Site Map](#)

[AdChoices](#) | Like us on , follow us on and join us on Google+

© 2017 Military Advantage

A Monster Company.

(4)

DECLASSIFIED
 Authority NND 745054

HEADQUARTERS
 1067TH ENGR CONS GROUP
 APO 70

30 Sep 45

SUBJECT: Monthly Technical Report.

TO: Chief Engineer, General Headquarters, SWIA, APO 500.

THRU: TECHNICAL CHANNELS.

1. a. Unit Designation: Hq, Hq Co and Med Det 1067th Engr Cons Group.
 b. Location: Aringay, Iq Union, Luzon, P.I. (Base M).
2. a. Commanding Officer: ROY M. McGUTCHEN, Colonel, OS 875.
 b. Executive Officer: CLIFTON A. PRATT, Lt Colonel, O 301 210.

3. Personnel Status:

	<u>Engineer</u>			<u>Total</u>	<u>Medical</u>		<u>Aggregate</u>		
	<u>Off</u>	<u>WO</u>	<u>EM</u>		<u>Off</u>	<u>EM</u>	<u>Off</u>	<u>WO</u>	<u>EM</u>
a. Authorized:	12	1	78	91	1	2	13	1	80
b. Assigned:	11	1	78	90	1	2	12	1	80
c. Present for duty:	9	1	45	55	1	2	10	1	57
d. Temporary duty:	2	0	33	35	0	0	2	0	33
e. Detached Service:	0	0	0	0	0	0	0	0	0
f. Sick:	0	0	0	0	0	0	0	0	0
g. Furlough:	0	0	0	0	0	0	0	0	0
h. En Route to Join:	0	0	0	0	0	0	0	0	0

4. Command to which unit is:

Assigned Date
 x Sixth Army, X Corps 1 Sep 45

5. Equipment:

a. Table of Organization and Equipment applicable to this unit is 5-72, dated 23 Dec 43 w s/changes.

b. Special List of Equipment applicable to this unit -
Movement Orders, Shipment 0508, ltr #D 4 Jan 45, f.
45) OB-S-E-S2MOT-M.

DECLASSIFIED
Authority NND 745054

ions.

a. Principal project on which employed. Coordination of
attached units in POM for Japan as well as supervising administration
and operation.

7. Critical matters affecting operations.

a. Equipment: Organizational equipment and all vehicles
and trailers located by Detachment at
Okinawa with the exception of 3 vehicles
and one trailer which were left in STO.

b. Supply. None.

c. Personnel. One second lieutenant, Highway Engineer
(7140) required.

8. a. Equipment: Have drawn vehicles from ordnance here which
will supplant those not recorded.

b. Supply. None.

c. Personnel. Requisitioned 6 Sep 45.

9. Special engineer intelligence.

a. Map corrections. None.

b. New allied engineer techniques and field expedients,
particularly explosives, mines, booby traps, and engineer equipment
and supplies. None.

FOR THE COMMANDING OFFICER:

STANLEY K. BROWN
Capt, CE
Adjutant

ENGINEER FIELD MANUAL

OPERATIONS OF ENGINEER UNITS

CHANGES }

WAR DEPARTMENT,

No. 2 WASHINGTON 25, D. C., 18 March 1944.

FM 5-6, 23 April 1943, is changed as follows:

■ 200.1. (Added.) ENGINEER CONSTRUCTION GROUP.—
a. The engineer construction group is a specialized organization designed, trained, and equipped for general engineer construction in the communications zone or the zone of interior. The group consists of a headquarters and headquarters company, a group medical detachment, and three or more construction battalions with a headquarters and headquarters and service company and three construction companies each. Medical detachments as listed in T/O & E 8-500 may be assigned to the battalions. Other engineer units may be attached as required.

b. Equipment of the construction battalion includes a skid-mounted powered earth auger, motorized air compressors, a 20-ton tractor-operated crane, ¾-yard truck-mounted cranes, motorized road grader, a towed road grader, 14-cubic-foot concrete mixers, 10-ton and 5- to 8-ton rollers, sheep's-foot rollers, 8-yard road scrapers, ¾-yard power shovels, 80-DBHP tractors, trailer-mounted generators and a motorized general purpose shop.

c. The group is armed with caliber .45 pistols, caliber .30 rifles and carbines, caliber .30 and caliber .50 machine guns, and grenade and rocket launchers.

d. Transportation is provided for reconnaissance, supply, and movement of construction materials and equipment, but is insufficient for the simultaneous movement of personnel and equipment. Because of the weight of construction machinery and the low speed of the motorized units, long moves by road are avoided whenever possible.

ENGINEER FIELD MANUAL

e. The group headquarters is a planning and coordinating agency for controlling attached construction battalions and special engineer units. Normally it operates under and with the engineer section of communications zone headquarters which prepares the general long-range engineer program and assigns tasks to the group.

f. The construction battalion executes engineer work assigned by the group or may operate independently when the larger group organization is not necessary. It is well equipped with heavy equipment and provided with specialists to undertake many types of construction work on a two-shift basis. It is best suited for projects which require use of heavy earth-moving equipment and of specialists in building construction, including plumbing, electrical work, and masonry, and in bridge construction. Usual assignments include road construction and maintenance including bridge and culvert construction; construction of cantonments, warehouses, port facilities, and hospitals; reconstruction of bombed or newly captured utilities; and construction of air fields and appurtenant structures.

g. The construction company ordinarily operates under battalion control, but may be detached for special projects. Since much of the heavy equipment is in the battalion headquarters and service company, a study of equipment needs is made prior to the detachment and necessary machinery and operators are attached from headquarters and service company. Equipment maintenance ordinarily handled by the headquarters and service company must be assumed by the unit to which the construction company is attached.

[A. G. 300.7 (15 Feb 44).]

BY ORDER OF THE SECRETARY OF WAR:

G. C. MARSHALL,

Chief of Staff

OFFICIAL:

J. A. ULIO,

Major General,

The Adjutant General.

FM 5-5
C 2

ENGINEER FIELD MANUAL
ENGINEER TROOPS

CHANGES }
No. 2 }

WAR DEPARTMENT,
WASHINGTON 25, D. C., 10 May 1944.

FM 5-5, 11 October 1943, is changed as follows:
Figure 13 is rescinded and the following substituted therefor:

ENGINEER TROOPS

CHAPTER 8

ENGINEER UNITS WITH ARMY SERVICE FORCES

SECTION XIX (ADDED)

ENGINEER CONSTRUCTION GROUP HEADQUARTERS
AND HEADQUARTERS COMPANY

■ 481. MISSION.—The mission of the construction group headquarters and headquarters company is to plan engineer construction; design roads, bridges, and structures; select and survey sites; and assign, coordinate, and supervise the work of attached battalions and other engineer units.

■ 482. ORGANIZATION.—The group headquarters and headquarters company is part of a construction group which also includes a medical detachment, and, normally, three construction battalions. Other engineer units may be attached as needed. (See T/O & B 5-72 and fig. 48.)

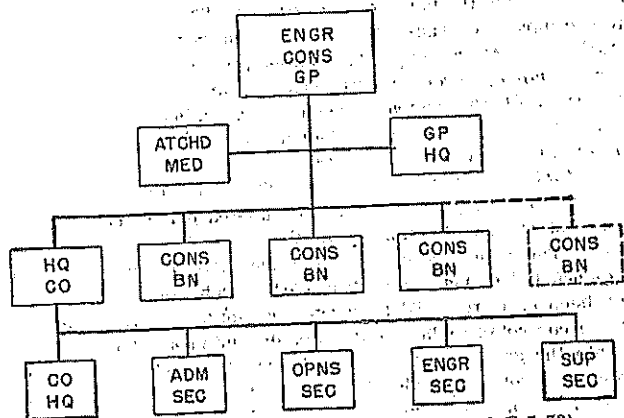


Figure 48.—Engineer construction group (T/O & B 5-72).

sonnel must be competent to inspect and supervise the administrative training of subordinate units. Attached special units normally will be attached for administration to one of the battalions but may be attached to the group headquarters when required by location and task assignment.

c. Operations section.—(1) The operations section consists of the operations officer (S-3), enlisted assistants, photographer, and a demolitions specialist.

(2) The operations officer (S-3), and the operations section work closely with the engineer section. Recommendations for assignment of tasks to attached construction battalions are prepared by the operations officer after consultation with the engineer officer and are submitted to the group commander for approval. The operations officer supervises the execution of approved projects in accordance with directives of the group commander. During the training period, the operations officer plans and supervises the group training.

d. Engineer section.—(1) The engineer section is composed of the engineer officer, an assistant, enlisted designers, a surveying party, draftsmen, and reconnaissance personnel.

(2) The section surveys selected sites and prepares general plans and designs for assigned tasks. Skilled designers and draftsmen are provided for work on roads, bridges, and structures.

e. Supply section.—(1) The supply section consists of the supply officer (S-4), an assistant, and enlisted personnel for general supply and supervision of water supply.

(2) The supply officer (S-4) normally controls the issue of engineer materials (class IV) by means of allocations and priorities. Supplies of classes I, II, III, IV, and V are obtained by each battalion directly from the supply agency or dump concerned. The group headquarters has insufficient personnel to move supplies for subordinate units. Water reconnaissance and general supervision of water supply also are charged to the group supply officer.

■ 488. GROUP HEADQUARTERS.—*a.* In addition to the officers in staff sections of headquarters company, the group headquar-

ters includes the group commander, executive officer, orientation officer, and special service officer.

b. The group commander estimates the situation and assigns subordinate missions to the construction battalions of the group. He usually prescribes the time of completion of unit tasks and exercises close supervision over execution of the mission by increasing or decreasing unit tasks to conserve manpower and to insure timely, over-all completion of the group mission. The group should not interfere with the execution of the unit missions to the destruction of initiative in the subordinate units. The group must not be considered a headquarters from which units are habitually detached to lower echelons but rather as a highly developed, technical planning and operating organization particularly adapted to execute the engineer requirements of higher echelons.

■ 489. ATTACHED MEDICAL.—a. The group medical detachment consists of the group surgeon and a small number of enlisted technicians. In addition to providing medical care for personnel of the group headquarters, the group medical officer supervises the medical detachments of the attached battalions.

b. The detachment has a 1½-ton, 6×6, truck and a ¼-ton trailer for the movement of personnel and equipment.

■ 490. DUTIES.—The duties of the group headquarters and headquarters company are to—

- a. Plan the engineer program in its area of responsibility.
- b. Select and survey sites for engineering projects.
- c. Design structures, roads, and bridges.
- d. Assign tasks to attached units; supervise their work; set completion dates; and require compliance with schedules, plans, and orders.
- e. Supervise operation and training of attached construction battalions and special engineer units.
- f. Establish communication with subordinate headquarters.
- g. Coordinate procurement and allocation of engineer construction materials.
- h. Execute engineer reconnaissance.
- i. Provide its own internal administration to include local security of group headquarters.

■ 483. EQUIPMENT.—Organic engineer equipment includes camouflage, drafting, gelatin-process reproduction, sketching, sign painting, and surveying sets for use in operation of the group headquarters.

■ 484. TRANSPORTATION.—Transportation consists of $\frac{1}{4}$ -ton trucks, $\frac{3}{4}$ -ton command car, $1\frac{1}{2}$ -ton, 6 x 6, trucks, and $2\frac{1}{2}$ -ton cargo trucks. A 1-ton, 250-gallon tank trailer, a 1-ton cargo trailer, and a $\frac{3}{4}$ -ton trailer are provided for mess use and for moving supplies and equipment.

■ 485. ARMAMENT.—Armament includes caliber .45 pistols, caliber .30 carbines, caliber .30 M1 rifles, caliber .30 machine guns, and a caliber .50 machine gun.

■ 486. TRAINING.—Basic and unit training follow the principles set forth in chapter 4. Specialized training is given in the operation of the headquarters sections, motor movements, motor maintenance, and local security. Personnel assigned to group headquarters should have civilian training and experience in civil-engineering design or construction methods.

■ 487. GROUP HEADQUARTERS COMPANY.—The group headquarters company consists of company headquarters and administrative, operations, engineer, and supply sections.

a. *Company headquarters.*—The company headquarters is composed of the company commander, an assistant company commander, and enlisted personnel for mess, supply, transportation, and company administration.

b. *Administrative section.*—(1) The administrative section consists of an adjutant (S-1) and enlisted personnel for group administration and communication.

(2) The group is not an administrative headquarters for attached battalions. It exercises only such administrative supervision as is required for proper command control. This includes control of replacement, transfer, and promotion of officers within the group; transfer of enlisted personnel within, to, or from the group; awards of decorations; establishment of uniform leave and rotation policies; and administrative control essential to operations. In addition, group headquarters per-

(m)

HEADQUARTERS
1067TH ENGR CONS GROUP
APO 317 (KURE, HONSHU)

01886

2 Jan 46.

SUBJECT: Monthly Historical Report, December.
THRU: Commanding Officer, KURE Base, APO 994.
TO: Commanding General, ASCOM-C, APO 404.

1. Ref Memo #6, Hq ASCOMO, 23 Jul 45.

2. The Mission: There was no change in the mission assigned the unit during the month of December. The Group Commander continued as KURE Base Engineer in addition to his other duties, with staff members of Group Headquarters carrying additional duties in the Base Engineer Section. The Group Headquarters and attached units were engaged in repair and maintenance of buildings, roads, airports, docks, and related facilities housing and serving the occupation forces of the base. Very little new construction was in progress, due to the contemplated inactivation of KURE Base on 1 February 1946.

3. Attachments:

a. The following units were attached to the unit at the year's end, and constitute engineer troops of the base:

- 186 Engr C Bn
- 233 Engr C Bn
- 242 Engr C Bn
- 477 Engr Maint Co
- 731 Engr Depot Co
- 1533 Engr Dump Truck Co
- 1872 Engr Avn Bn
- 1874 Engr Avn Bn
- 2866 Engr Utilities Det
- 3078 Engr Dump Truck Co
- 3203 Engr Water Supply Co

b. Changes:

The 533 Engr Boat and Shore Regt and the 1461 Engr Boat Maint Co were inactivated effective 31 December 45 per ltr AG 321 (Engr)(FE) Hq 8th Army dated 4 December 45. The 186 Engr Combat Bn joined the group on 14 December. The 66th Engr Topo Co was transferred to the control of I Corps on 1 December 45.

4. Projects:

a. Japanese contractors continued work on projects let by the procurement section of KURE Base in mid-November. During December an average of three hundred (300) Japanese were used daily as common laborers under the supervision of Engineer troops.

ENC P-1064-0.2

4637

DECLASSIFIED
 NND 735017
 AUTHORITY
 BY 5. NARA DATE 2/17

b. Principal Japanese contracts progress during
 December included the following:

<u>Description of Job</u>	<u>% completed by 31 Dec 45</u>
Rehabilitation of water system (used formerly by Japanese navy).	93%
Rehabilitation of power system to Class I, II, and III QM Whses.	Finished.
Repair and remodeling of X Corps Chapel	Finished.
Carpentry work and cleaning of 361 Station Hospital	Continuous.
Colored Red Cross Building	Finished.
Installation of hot water at 361 Sta Hosp	25%
Repair of city streets and drainage system	Continuous.
Repair of Medical Depot Building	43%
Repair and operation of pumps at KURE RR Station underpass.	Continuous.

c. Principal jobs in progress under supervision of
 Engineer units included:

<u>Job</u>	<u>Unit</u>	<u>% completed by 31 Dec 45</u>
Operation of three (3) water points.	3203 Engr WS Co	Continuous.
Installation of heating and plumbing in ARC billets.	2866 Engr Util Det	Finished.
Repair of water pumps at Otaga.	2866 Engr Util Det	95%
Installation of water facilities in Hq Disp, KURE Base.	2866 Engr Util Det.	Finished.
Construction of Colored Red Cross Bldg.	1872 Engr Avn Bn	Continued by Jap Contractor.
Operation of burnable trash dump.	1872 Engr Avn Bn	Discontinued.
Hiroshima Airstrip, maint and repairs.	1874 Engr Avn Bn	Continuous.
Improve residence of CG, X Corps	1874 Engr. Avn Bn	Completed.
Landscaping of cemetery on Eta Jima.	1874 Engr Avn Bn	Completed.
Sawmill Operation	1874 Engr Avn Bn	Continuous.

DECLASSIFIED
 NND 735017
 AUTHORITY
 BY 15 NARA DATE: 2/17

<u>Job</u>	<u>Unit</u>	<u>% Complete by 31 Dec 45.</u>
Construction of embark facilities at Red Beach, Hiro.	1874 Engr Avn Bn	5%
Repair of Medical Depot.	1874 Engr Avn Bn	43%
Carpentry at 361 Sta Hosp	1874 Engr Avn Bn.	30%
Construction of shelves and bins at PX Whse.	1874 Engr Avn Bn	Completed.
Construction of bumper block on pier.	1874 Engr Avn Bn	Cancelled.
Maint of bridge between Pier B and Finger Pier.	1874 Engr Avn Bn	Continuous.

5. Problems:

a. Personnel: The shortage of key non-coms, cooks, clerks, mechanics and other skill was alleviated by the transfer of personnel from the 186th Engr Combat Bn to units scheduled to remain active.

b. Supply: Shipments by rail from the Engr Service Center included:

<u>ITEM</u>	<u>TO UNIT</u>
3360 bags cement	Kobe, Ko
2500 bags cement	I Corps, Osaka
150 space heaters	Engr Depot, Kobe Ko
41 pre-fab huts	" " " "
7 pre-fab kits	" " " "
2000 bags cement	" " " "
40 cylinders methyl chloride	" " " "
34 hot water heaters	21 RCT, Okayama
1000 light bulbs	" " " "
50 rolls wire	" " " "
100 acetylene cylinders, empty	1191 Engr Dep Co, Nagoya
50000 feet rope, 1/2", 1", and 2".	" " " "
350000 BFM, lumber	24 Inf Div
450000 BFM, lumber	41 Inf Div
80000 BFM, lumber	X Corps
400000 BFM, lumber	KURE Base

6. Weather: Remained damp and cool with occasional light rains and snow flurries.

FOR THE COMMANDING OFFICER:

Stanley K. Brown
 STANLEY K. BROWN,
 Capt., GE,
 Adjutant.

DECLASSIFIED
NND 735017
AUTHORITY
EJL NARA DATE: 2/17

1st Ind

01868

OECE 314.7
(1874 EAB)

Hq, 1067th Engr Cons Gp, APO 317 (KURE, HONSHU), 7 Jan 46.

TO: Commanding Officer, KURE Base, APO 994.

Forwarded.

FOR THE COMMANDING OFFICER:

Stanley K Brown
STANLEY K. BROWN,
Capt., CE,
Adjutant.