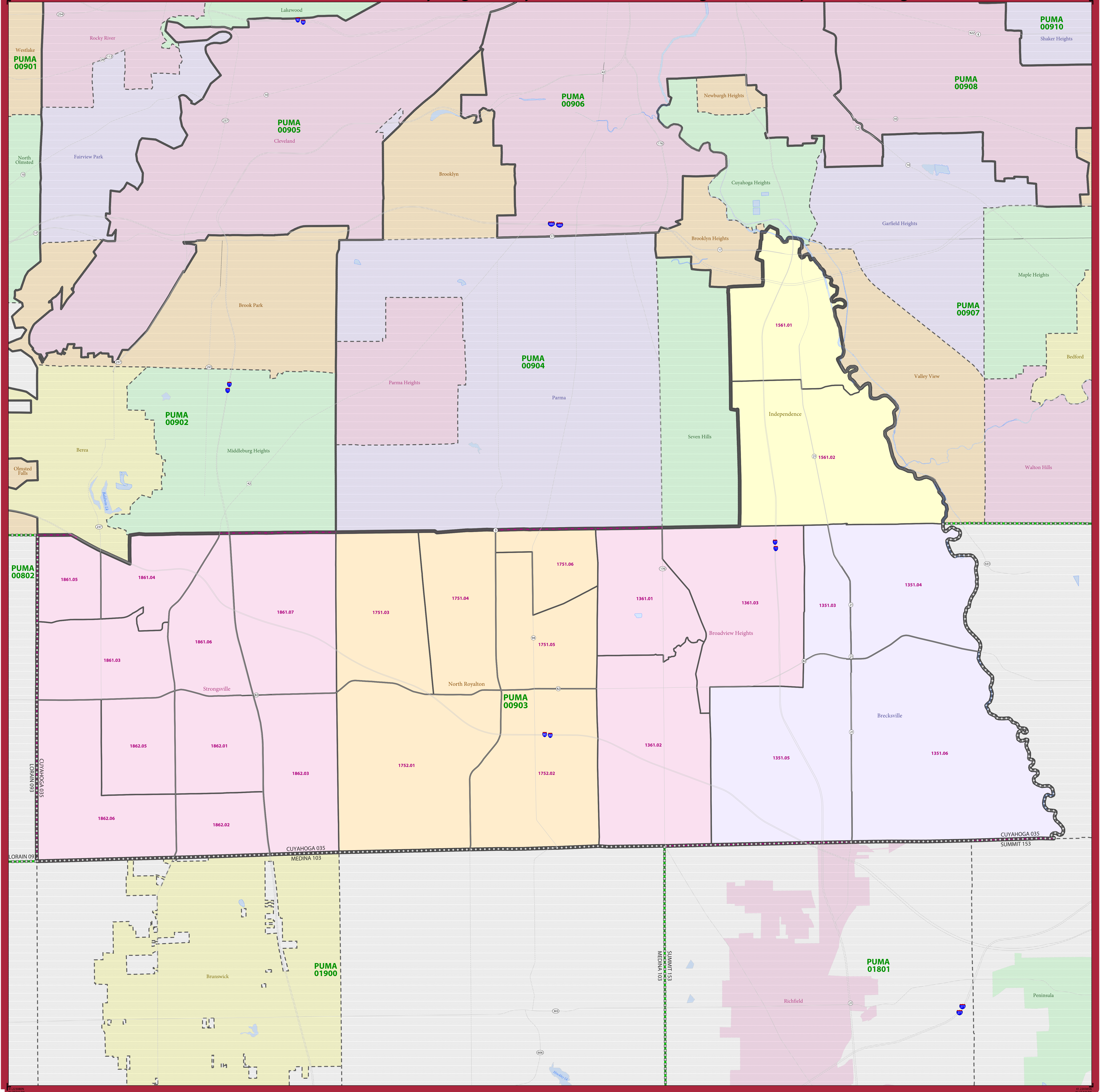


2010 CENSUS - PUMA REFERENCE MAP: Cuyahoga County (South)--Broadview Heights, North Royalton & Strongsville Cities



LEGEND

SYMBOL DESCRIPTION	SYMBOL	LABEL STYLE
International	☆☆☆☆☆	CANADA
Federal American Indian Reservation	[Dotted Pattern]	L'ANSE RES
Off-Reservation Trust Land	[Cross-hatched Pattern]	T1880
Alaska Native Regional Corporation	[Dashed Pattern]	NANA ANRC
Public Use Microdata Area (PUMA)	[Green Fill]	PUMA 00300
Census Tract	[Pink Fill]	183.01
State (or statistically equivalent entity)	[Blue Fill]	NEW YORK 36
County (or statistically equivalent entity)	[Orange Fill]	ERIE 029
Minor Civil Division (MCD) ¹	[Dashed Line]	Bristol town
Consolidated City	[Red Circle]	MILFORD
Incorporated Place ²	[Green Square]	Davis
Census Designated Place (CDP) ²	[Yellow Square]	Incline Village

DESCRIPTION	SYMBOL	DESCRIPTION	SYMBOL
Interstate	[Red/Blue Line]	Water Body	[Blue Area]
U.S. Highway	[Red/White Line]	Outside Subject Area	[Hatched Area]
State Highway	[Yellow/White Line]		
Nonvisible Boundary or Feature Not Elsewhere Classified	[Dotted Line]		

Where international, state, and/or county boundaries coincide, the map shows the boundary symbol for only the highest-ranking of these boundaries.

Geographic areas outside the subject PUMA are labeled only as space allows.

1 MCD boundaries are shown in the following states in which some or all MCDs function as general-purpose governmental units: Connecticut, Illinois, Indiana, Kansas, Maine, Massachusetts, Michigan, Minnesota, Missouri, Nebraska, New Hampshire, New Jersey, New York, North Dakota, Ohio, Pennsylvania, Rhode Island, South Dakota, Vermont, and Wisconsin. Only governmental MCDs in the subject PUMA are labeled.

2 Place label color corresponds to the place fill color.
Label colors: Davis Davis Davis Davis Davis

SUBJECT AREA COUNTIES ON MAP SHEET
39035 Cuyahoga

Public Use Microdata Areas (PUMAs) are delineated based on the results of the 2010 Decennial Census; all other legal boundaries and names are as of January 1, 2010. The boundaries shown on this map are for Census Bureau statistical data collection and tabulation purposes only; their depiction and designations for statistical purposes does not constitute a determination of jurisdictional authority or rights of ownership or entitlement.

Geographic Vintage: 2010 Census (reference date: January 1, 2010)
Data Source: U.S. Census Bureau's MAI/TIGER database (ACS13)
Map Created by Geography Division: December 13, 2013

U.S. DEPARTMENT OF COMMERCE Economics and Statistics Administration U.S. Census Bureau

Projection: Albers Equal Area Conic
Datum: NAD83
Spheroid: GRS 80
1st Standard Parallel: 39 03 25
2nd Standard Parallel: 41 40 23
Central Meridian: -82 40 11
Latitude of Projection's Origin: 38 24 11
False Easting: 0
False Northing: 0

The plotted map scale is 1:38228

0 0.5 1 1.5 2 2.5 3 Kilometers
0 0.25 0.5 0.75 1 Miles

