

62.07

1943



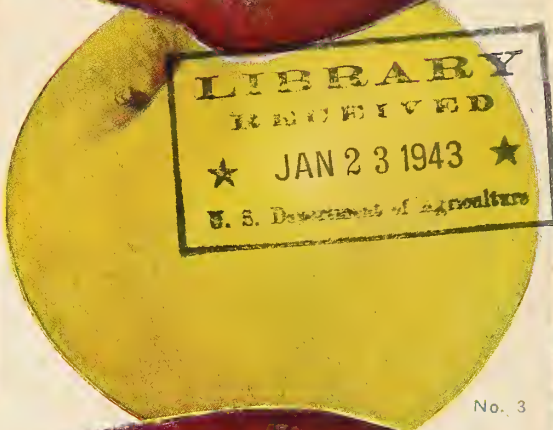
No. 1



No. 2

9 TREES \$2
 2 Feet and up
RED and **YELLOW**

- 1 LODI
- 2 RED DELICIOUS
- 3 YELLOW DELICIOUS
- 4 BLOOD RED STAYMAN
- 5 BLOOD RED JONATHAN



No. 3

LIBRARY
 RECEIVED
 ★ JAN 23 1943 ★
 U. S. Department of Agriculture



No. 5



No. 4

Benton County Nursery Co.
 Rogers, Arkansas



**Victory HOME FRUIT
Collection . . .**

- 1 Stayman Winesap Apple
- 1 Early Harvest Apple
- 1 Summer Champion Apple
- 1 Yellow Delicious Apple
- 1 Blood Red Delicious Apple
- 1 Jonathan Apple
- 1 Red Bird Peach
- 1 J. H. Hale Peach
- 1 Early Elberta Peach
- 1 Krummel October Peach
- 1 Douglas Pear
- 1 Hanska Plum

ALL OF THESE FOR ONLY **\$3.00**
 These trees are from 3 to 4 ft. high.



AMERICA PLUM

**Red, White and Blue
GRAPE
Special . . .**

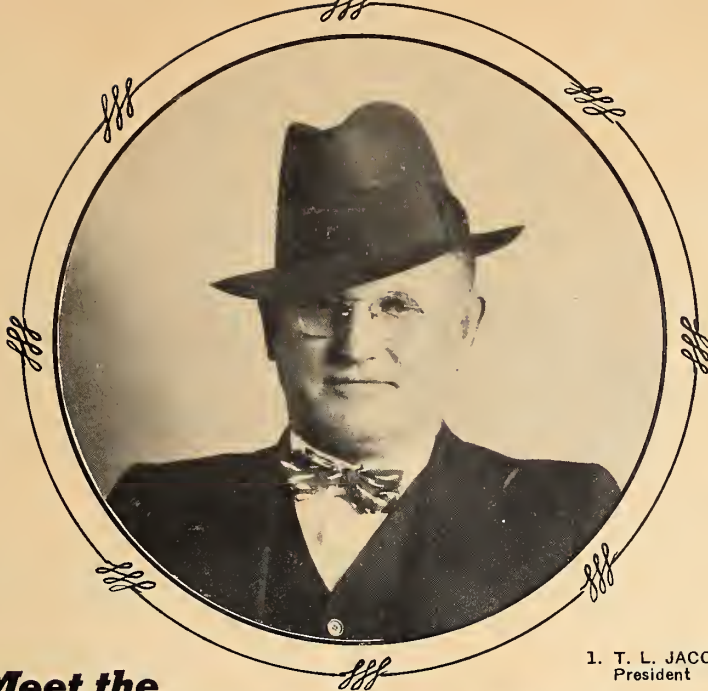
12 2-year Vines: 4 red, 4 white, 4 blue, of the very best sorts, that will ripen at different times, all delivered to your door, for \$1.00. (Our selection of the varieties.)

12 2-year-old Vines for **\$1.00**

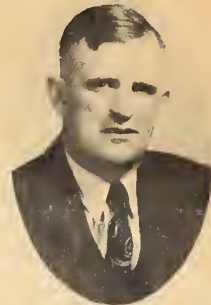




- 2. Mrs. T. L. Jacobs, Vice-President
- 3. Verna Jacobs Rhoads, Secretary
- 4. Geo. W. Eoff, Landscape Gardener



1. T. L. JACOBS,
President



- 5. Lee Jacobs, 2nd Vice-President
- 6. Russell E. Driver, Mgr., Seed and Plant Dept.
- 7. Maxine Jacobs Driver, Advertising Manager

Meet the **NURSERY FAMILY...**

All ready to give your order the very best and prompt attention possible under these war-time conditions.

OZARK MOUNTAIN STOCK at Lowest

You save 75 to 100 per cent on the cost of your nursery stock—fruit, shade and ornamental trees, shrubs, roses, perennials, etc.—when you buy from the HILLBILLY Growers.

We supply Ozark Mountain grown nursery stock from our 200 broad and fertile acres to our 50,000 friends and customers in every state in the nation, and we ship our trees and plants to Canada, China and many other foreign countries.

Read what the U. S. Government Department of Agriculture says in Farmers' Bulletin, about buying trees and plants: "If the farmer makes his purchase direct from the Nurseryman, he will save the expense of the middleman or agent, and is less liable to the mistakes and injuries that will occur through repeated handling."

OUR THANKS

In presenting this catalog, we desire to thank our friends and customers in all parts of the world for their valued orders, and to respectfully solicit their orders for the future. No order is too large or too small to receive our careful and prompt attention. We are always glad to give you our suggestions of what others have found most profitable to grow.

SHIPPING SEASON

We strongly recommend that you buy now whatever you intend to plant. The shipping season generally begins about October 13, and continues up until May. The season is not regulated, however, by any definite date. Southern planters may receive our trees some weeks after the season has opened, yet when planted, these trees will give entire satisfaction.



Mr. Henry Woolsey was the originator of the Benton County Nursery. He began propagating and growing trees in his childhood. When quite a young man he began the first nursery in Benton County. This nursery was started on a farm northwest of Rogers. Mr. Woolsey obtained his knowledge of growing the first trees from his father some 117 years ago.

WE SELL ON THE INSTALLMENT PLAN

On orders amounting to Ten Dollars (\$10) and up, we will be glad to make the following terms to responsible people in order that you may buy and plant what Nursery Stock, Seeds and Plants you will need, while the season is on to plant them and pay the balance due on them after they are planted. This enables you to have the stock coming on while you are paying out the balance due.

In buying on our credit plan your order must amount to \$10 or more. To each dollar your order amounts to, add 6 cents. This is done

GROWN NURSERY Prices in America

to defray the extra expense of taking care of the Credit Plan orders.

One-half of the amount of the order is to be paid down with the order, or before shipment date. The balance due is to be paid in three equal payments, as follows: One-third of the amount due to be paid one month (30) days from date of shipment. Second payment of one-third of the amount due is to be paid two months (60) days after date of shipment. The third payment of one-third the amount due is to be paid three months (90) days after date of shipment.

C. O. D. Orders Must Have a Deposit of 25% Paid on Them. We are sorry that experience has taught us that it is a losing proposition to fill orders and make shipments unless a deposit has been paid on the order; our stock is perishable and must have prompt attention when it arrives at destination and we are compelled to ask a deposit of 25 per cent of the amount of the order as a guarantee of good faith. We guarantee satisfaction or your money refunded.

1. We strive to grow good stock and best varieties of all fruits, berries and ornamentals as are known to the Experiment Stations of America.
2. To sell them at the lowest prices that we can possibly afford. We cannot accept orders for less than \$1.00 because of the heavy expense of packing, and high rates on the first pound by Parcel Post, without loss to us. C. O. D. orders must have a deposit paid on them.

REFERENCES

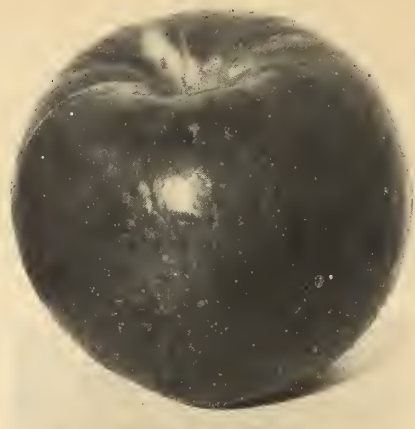
Dun and Bradstreet Commercial Agents, American Association of Nurserymen, American National Bank, Rogers, Ark., or any business firm in Benton County.

Every American Family

Can Grow Their Own FRESH FRUIT This Year!

FRUIT TREES

At prices anyone can afford to pay



MAMMOTH BLACK TWIG



GRIMES GOLDEN

Eat an Apple a Day

APPLE

... at Low Wholesale Prices DIRECT FROM GROWER TO PLANTER

SUMMER APPLES

AUTUMN APPLES

APPLE TREES

These are small size grafted and budded trees that are first class in every respect. We guarantee you will be pleased with them.

Varieties: Yellow Transparent, Yellow Delicious, Black Ben Davis, Jonathan, Stayman, Winesap, Ada Red, Grimes Golden, and Blood Red Delicious.

Due to the shortage in this size trees, we are compelled to limit 10 to each customer.

SIZES
Under 1 ft. **10 60¢**
Each, 7c
1 to 2 ft. **100 \$12**
Each, 12c

EARLY RED BIRD—The earliest apple on our list, fiery flaming red, from week to two weeks before the Yellow Transparent. The earliest apples always bring the top prices, this one being of a very fine flavor, of good size and one of the very best for quality of any early apple yet introduced; makes it a winner for a market apple. The trees bear young, annually, and immense crops.

ADA RED—Large, red, summer apple; ripens July 25th. Is a brilliant red, fine cooking apple as well as eating apple; large size, and bears heavy annual crops; begins to bear when very young and ripens at a time when there are no other red apples on the market, and always commands the highest prices.

OLD FASHIONED HORSE—Large, pale yellow, shaded with red; tender, juicy, sub-acid. Tree vigorous and very hardy; upright grower; bears early and abundantly. An old apple, famous for its fitness for cider, pies, drying and all culinary purposes. When allowed to mellow to deepest gold, it is a delicious eating apple. We have the genuine old-fashioned Horse Apple. Ripens August 1st.

SWEET BOUGH—A large, pale yellow apple, tender and sweet. Tree vigorous and long lived. August to early September.

EARLY HARVEST—Tree healthy, vigorous and a good bearer. Fruit medium size, nearly round, somewhat flattened; surface smooth, clear, waxy, yellow; rarely blushed; flesh tender, juicy, acid to sub-acid, flavor good. July.

YELLOW TRANSPARENT—A Russian apple. The tree is a hardy, upright grower; regular and early bearer, medium size. Color a rich, transparent yellow with a faint blush on sunny side; flesh melting, juicy, sub-acid.

RED ASTRACHAN—Tree vigorous, upright; hardy and productive. Fruit medium to large; surface smooth, marbled and striped on greenish yellow; flavor acid.

RED JUNE—Medium red; flesh white, tender; juicy, good flavor. Abundant bearer. Last of June.

DELICIOUS—Flourishes well in every state of Union. Bears annually; great yielder, hangs well on trees. Trees very thrifty, long lived and extremely hardy. Fruit very large, nearly covered with brilliant, dark-red, flesh fine grained, crisp, juicy, melting and delicious; splendid keeper and shipper, should be in every orchard.

YELLOW DELICIOUS—Large as the genuine Delicious, golden in color, delicious flavor; appears to be suited to all soils and climates; the trees bear very young and have heavy crops; the fruit is of the best quality, and will bring highest prices. Ripens in October and will keep until spring.

MAIDEN BLUSH—Large, smooth, regular, evenly shaped red cheeks or blush on a pale, yellow ground; flesh white, tender, sprightly, with a pleasant sub-acid flavor; bears large crops. August.

JONATHAN—Medium size, roundish yellow nearly covered with red; flesh white, fine grained, juicy, tender and mild; a delicious and strictly dessert apple that always demands highest market prices. Seedling of Spitzberg. Is a much better tree; vigorous and productive. November to April.

GRIMES GOLDEN—This is one of the most popular apple trees in cultivation. Tree strong thrifty grower. Fruit medium or above, cylindrical; regular surface; yellow veined; russeted; flesh yellow, firm, very fine grained, juicy, flavor sub-acid, quality rich. For dessert, cooking and market. November and December.

KING DAVID—October. Size medium to large, color deep rich red with distinct stripe-like markings of very dark red. Originated in Arkansas where it began bearing at three years old. Resembles Jonathan in both tree and fruit. Surpasses that variety in every good quality.

PEACH TREES

Varieties: Early Wheeler, Elberta, Red Bird Cling, J. H. Hale, Belle of Georgia, Mayflower, Early Elberta, Krummel October.

Due to the shortage in this size trees, we are compelled to limit 10 to each customer.

SIZES
Under 1 ft. **10 60¢**
Each, 7c
1 to 2 ft. **100 \$12**
Each, 12c

These Prices Cancel All Previous Quotations

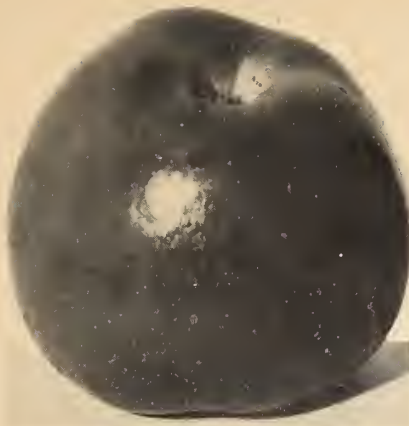
Lenair City, Tenn.,
March 19, 1941

Dear Sir:
I received my apple trees in fine shape. Thanking you for your prompt service, I'll do everything I can to help you get more orders.

Very truly yours,
MAGGIE PHILLIPS



YELLOW TRANSPARENT



JONATHAN

Grape Vines

These are well rooted grape vines (not merely cuttings.) They were set out late and did not make this season large vines. They will grow off well and make fine vines in one year. We have in this grade:

CONCORD

Each 4c 100 for \$4.00

1000 for \$40.00

TREES

Direct to You From Growers

WINTER APPLES

ARKANSAS BLACK—Vigorous, upright grower. Fruit medium to large; fine flavor; beautiful dark color, almost black; flesh yellowish, slightly sub-acid, crisp. One of the best for cooking. January to March.

BEN DAVIS—Tree thrifty, upright grower of almost perfect shape. Fruit large, round, sometimes variable in form; surface smooth: often paleish yellow, covered and splashed bright red; flesh white, tender, juicy, flavor sub-acid, not rich quality; only good for market and cooking. November to spring.

BLACK BEN DAVIS—Fruit is bright red on yellow ground with no stripes; large oblong; surface smooth, polished, dots minute; basin shallow, sometimes deep; eye large, cavity deep; brown in color; stem medium to long; core medium. Tree healthy, vigorous, and prolific bearer. January to April.

STAYMAN WINESAP—Large, roundish, deep red, medium quality; keeps well; tree a fair grower and good bearer. December to May.

WINESAP—Medium; dark red; sub-acid. Tree an abundant bearer. One of the finest cider apples grown, both on account of its over abundance of juice and its productive-ness. November to April.

WINTER BANANA—A highly prized and valuable market sort. Beautiful yellow fruit; flavor exquisite and very tempting; highest quality. Productive. Reliable growers represent it to be hardy north. Very popular for dessert.

CORTLAND—(Late winter keeper.) This new apple originated at the New York Experiment Station. Of the many thousands of new varie-

Ozark Mountain Grown

ties originated there the Cortland is Considered the best; it is a cross between Ben Davis and McIntosh and possesses the good qualities of both, which makes it one of the most profitable apples to grow; the quality is similar to the McIntosh.

MAMMOTH BLACK TWIG—Extra large size, round, skin smooth, yellowish, covered with deep red, the general effect being dark red; flesh tender, tinged with yellow, crisp sub-acid, aromatic; of excellent quality in every way. Tree vigorous, healthy and bears when quite young; very prolific.

TALMAN SWEET—Medium size, pale yellow, slightly tinged with red; firm, rich and sweet; excellent for preserving. Tree vigorous, very hardy and productive. November to April.

Our Apple Trees Are Bearing Everywhere

Bard, New Mex., Feb. 26, 1940.

Benton County Nursery, Rogers, Ark.

Dear Sir:

I received the 50 apple trees and 15 grape vines.

They were in good shape. Have them all out. Were a good size.

Thank you very much.

JOHN BOATMAN.

Hopkinsville, Ky.
Nov. 7, 1941

Benton County Nursery Co., Rogers, Ark.

Dear Sirs:

I received the 50 trees ordered from you recently, this week and apparently they were in fine shape and I want to state to you that they were as pretty a lot of trees as I have ever seen and I will promise you one thing, that if I order more trees of any description, I will take pleasure in ordering them from your nursery. In the meantime I will also be pleased to advise any of my friends thinking of planting any trees, to order them from you.

Thanking you for your selection of trees sent to me, beg to remain,

Yours very truly,

R. M. RICE

Hansen's BUSH CHERRY

Perfectly hardy anywhere. Makes superb jam, or clear, sparkling jelly.

2-Yr. Bearing Size

Each 35c

12 for \$3.50

Beautify Your Home with

EVERGREENS

These Evergreens are young trees, from 3 to 5 years old. They are well rooted and well shaped and will, in a few years, make a fine specimen evergreen. We offer the following kinds that will range in height from 10 to 20 inches: Norway Spruce, Black Hill Spruce, Juniperus Virginiana, Scotch Pines, American Arborvitae, Chinese Arborvitae.

Each 30c, 12 for \$3.00

100 for \$20

VALUABLE PLANTING GUIDE . . FREE!

With every order of nursery stock, we send you Free, a 24-page Planting Guide. It gives you a world of real practical information with many illustrations.

APPLE TREES

... for
BIG PROFITS

Plant These 6 Varieties

RED DELICIOUS (Blood Red) (Triple Red)—This Delicious is identical with the Genuine Delicious in size and flavor, but is a rich red in color; it is a beauty and always brings the highest prices; the quality is of the very best.

LODI—Is a seedling of Yellow Transparent. The tree and the fruit resemble the Yellow Transparent but the fruits are much larger and make the Yellow Transparent apples look like culls. The tree bears annually and ripens with the Yellow Transparent.

DELUX—Very early and large size fruit. A good cooking and eating apple with a light green color. Bears heavily.

BLOOD RED JONATHAN—Gets red all over, ripens same time as Jonathan; good size and quality.

BLOOD RED STAYMAN WINESAP—A large Stayman Winesap that is blood red, excellent quality, keeps well. The tree is a fair grower and good bearer.

TURLEY—A blood red Stayman Winesap that does not crack. We highly recommend this variety.



TURLEY

**We Take All the Chances
Our Guarantee
Protects You!**

On proper proof, we will replace free of charge, any tree, shrub, etc., that prove untrue to label, or refund the amount paid. Because of the many factors over which we have no control, we cannot be responsible for the crop. Nor for any amount greater than the purchase price. **ALL CLAIMS, EXCEPT STOCK NOT TRUE TO NAME, MUST BE MADE BY JUNE 1.**

**Direct from
Grower
to Planter---**
at Astonishingly LOW
**WHOLESALE
PRICES**

Now You Can Start That
HOME ORCHARD
**6 RED and
YELLOW
APPLE TREES**

1 Double Red Delicious	1 Yellow Delicious
1 Stayman Winesap	1 Grimes Golden
1 Jonathan	1 Yellow Transparent

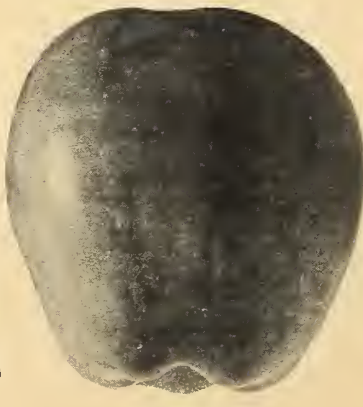
Our Select 3 to 4 Ft. Trees

ALL FOR **\$1.50** PRE-PAID

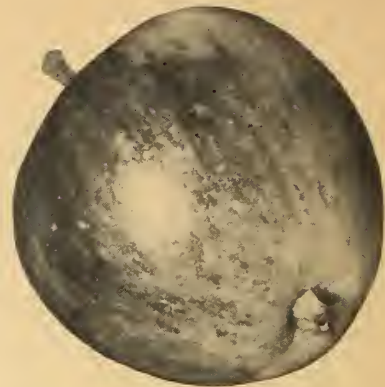
Plant ...
ANOKA
The Old Folks' Favorite

Bears second year. A wonderful early apple. Fruit is large and yellow, streaked with strawberry red. Good flavor.

50¢ Each **\$5.00** 12 for



DELICIOUS



DOLGO

**CRAB
APPLES**
for All Climates

DOLGO

DOLGO—A handsome red Crab Apple. Flesh and deep red to the core. The fruit is full of juice, jells easily and makes a rich ruby red jelly of beautiful color and excellent flavor.

2 to 4 ft., **50¢**
Each ...

Crab Apples are especially desirable in the colder sections as only a few varieties of apples can be successfully grown; but they succeed well in all climates and their fruit is very popular for preserves, jelly, and some sorts are excellent for eating.

FLORENCE—The finest of the Crab Apples. Tree of rather small size, coming into bearing when very young and producing heavily; the fruit setting in clusters. The apples will measure about an inch or slightly more in diameter; golden yellow with a bright cheek, or almost entirely red. The flesh is firm, fine grained and exceedingly juicy with that distinct snappiness so relished in a crab apple.

RED SIBERIAN—Fruit about an inch in diameter, brilliant yellow with an attractive red cheek; very juicy and excellent for jellies, preserves and pickles. The tree becomes of very large size.

Dear Sir:
Portsmouth, Ohio

Received my order O. K. Was well pleased. Will order more in the spring. Thanks many times for sending my order at once. **MRS. MARGARET LEWIS.**

An Orchard
Will Pay You
Big Dividends

✓ CHERRIES

SWEET
SOUR
HYBRID

Varieties

EARLY RICHMOND—Everywhere the most popular. Tree strong, thrifty grower, making a large, symmetrical head; fruit medium size, dark red, melting, juicy, sprightly, acid flavor and especially valuable for cooking purposes; tree an early and abundant bearer. Season last of May and first of June.



MONTMORENCY

ENGLISH MORELLO—Tree moderate grower, hardy; an early and great bearer; the most valuable of the late varieties. Fruit large, round; skin dark red, becoming nearly black when fully ripe; flesh dark red, tender, juicy and a pleasant sub-acid flavor when fully ripe. July.

LARGE MONTMORENCY—A fine large, light red cherry of the Richmond class but larger and more solid; a more upright grower, equally hardy and productive. Second only to Early Richmond in value. Ripens ten days later.

✓ Delicious NECTARINES

A most unusually outstanding and delicious fruit. A cross between a peach and plum. Resembles a peach in shape, size and flavor. As fuzzless as a plum. Fruit is large, juicy and melting. Unequaled either as a fresh fruit or for canning. Flesh fine grained and a beautiful color clear to the pit. Destined to become one of America's most popular tree fruits. Has the same habit of growth and bearing as the peach, and requires the same care.

We Offer the Three Most Popular Varieties

Surecrop—Yellow freestone . . Pine-apple—red freestone . . Quetta—red clingstone.

Hybrids

COMPASS CHERRY PLUM—Originated in Minnesota through a cross between the native Sand cherry and the Miner plum. Like the Hansen hybrid plums, it possesses remarkable hardiness combined with enormous productiveness. In appearance the fruit resembles the plum more than the cherry but it has the bright red color of the cherry and the prolific fruiting habit of the Sand cherry. Ripens the last of June.

ST. ANTHONY—A Sand cherry hybrid of the breeding of Zumbra cherry. Fruit small to medium, round, dark purplish black; excellent for preserving. Ripens last of July.

ZUMBRA—Sand cherry hybrid produced by the Minnesota Experiment Station. The tree is a dwarf grower and produces its fruit in thick clusters along the limbs. Fruit small to medium, dark purplish black, round, crisp, juicy. Ripens last of July. Valuable for home and market.

Size
2 to 3 ft.
Each, 50c

12 \$4

3 to 4 ft.
Each, 75c

12 \$6



EARLY RICHMOND

✓ QUINCES



ORANGE QUINCE

ORANGE—Large, roundish, yellow; cooks tender and is of excellent flavor. Valuable for preserves and flavoring. Productive. September and October.

SWEET



YELLOW SPANISH

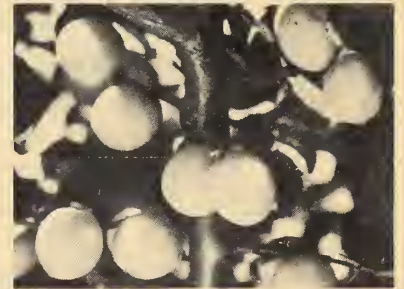
SCHMIDT'S BIGARREAU — Very large, bright glossy black; half tender, juicy, rich and fine. Tree a rapid grower and good bearer. Last of June and first of July.

YELLOW SPANISH—Tree very large and vigorous, upright spreading. Fruit mid-season, color bright amber-yellow with a reddish blush. Flesh white, with tender aromatic sweet flavor. Freestone. Bears abundantly.

Be Sure to Order from Separate Price List With This Catalog

It gives you the very latest and lowest prices for all Nursery Stock shown in these pages.

✓ APRICOTS



SUPERB APRICOT

SUPERB—Medium in size, light salmon color with numerous red or russet dots. Flesh yellow, firm and good. Fairly early.
MOORPARK—One of the largest and finest apricots. Yellow with red cheeks; flesh orange, sweet, juicy and rich; parts from the stone. Very productive.

Extra Early Variety

MAYFLOWER—Medium size, practically red all over; flesh firm and of good flavor; extremely valuable as a very early market sort especially in southern states. Tree blooms very late; upright and good grower; prolific bearer. Earliest known. S-Cling.



ELBERTA



HEATH CLING

Early Varieties

EARLY WHEELER—Semi-cling. Ripens about a week after Mayflower. Of good size, flesh firm, meaty and of fine texture. Color pinkish white on under side and bright crimson next to sun. This is the best peach of its season, and is the first peach to ripen that really comes up to the standard of a first class peach.

RED BIRD CLING (Very Early)—As large as Elberta, strikingly handsome and the first big peach that is ready for market. A sensation everywhere; bright glowing red on a background of creamy white; flesh firm, making it an ideal shipper. Early in the season people are fruit hungry and these big handsome peaches bring prices that are almost unbelievable. W. A. Jeffers, a well known Arkansas orchardist, got as high as \$10.00 per bushel for Red Bird. The advent of this glorious peach makes possible tremendous profits. It is so superior to Sneed, Alexander and other poor quality, soft, watery peaches ripening same time.

MAMIE ROSS—Freestone, very early, white. The Mamie Ross is a large oval peach with a bright red cheek. The flesh is creamy white, juicy, very firm and the skin tough, making it an unusually good shipping peach for its season. The flavor is rich and extra good. The best quality, very early peach.

ALTON, EARLY WHITE FREESTONE—Magnificent white fleeced freestone peach that is larger than Carmen, better quality than Champion and handsomer than any picture ever painted. One of the sweetest and most luscious peaches, and no tree will bear more or bigger crops. L. L. Coleman, a South Missouri orchardist, says: "They have borne every year since they came into bearing. I know one fellow who has had them eight or nine years and they have missed but one crop." E. A. Riehl, of Alton, always gets \$1.50 per bushel for his Altons. Calvin R. Clark, of Scott County, Iowa, says: "Finest peach I ever saw; brought three times as much on the market as my other sorts. Everything considered, Alton is the best and most prolific white peach in propagation."

EARLY ROSE (Clingstone)—Ripe middle of June. Fruit brilliant, beautiful red all over. Flesh fine grained, tender and of best quality. Tree vigorous, hardy, and an early bearer. Tends to overload, and should be thinned. Where this is done, the most beautiful peaches can be grown. They carry well and bring the very top price in the markets.

For Cooking, Eating,
Canning, Market . . .

PEACH

Medium Varieties

CARMEN (Freestone)—The originator says is either a sister or a seedling of the Elberta; tree of same manner and habit of growth, only has a larger and darker colored foliage; hardy and productive, the fruit is practically rot-proof, as original tree, standing in low, wet ground, has perfected its fruit while other varieties all about have rotted entirely. The fruit is broadly oval in form, large, pointed; skin a yellowish white, slightly tinged with red, of a sprightly vinous flavor. The "Rural New Yorker" first described it some years ago as an extra large yellow peach, like "Elberta" type, but it is not strictly a yellow peach, neither is it white. Size large; juicy, sweet and excellent; productive. Originated in Texas. Tree is a regular bearer. First of July.

CHINESE CLING (Clingstone)—Ripe July 20 to 25. A favorite peach; of large size; creamy white with beautiful blush; flesh of the very highest quality; indeed the standard of richness among peaches.

CHAMPION (Freestone)—A western peach of very large size and good quality, also noticeable for the regularity of its bearing. Skin is of a rich, creamy white with a red cheek; flesh creamy white, sweet and delicious, rich and juicy. A most profitable market peach. July 20th.

BELLE OF GEORGIA—Very large, skin white, with red cheeks; flesh white, firm and of excellent flavor; the fruit is uniformly large and showy, prolific. Chinese Cling seedling. Freestone.

J. H. HALE—Genuine Hale Budded from Bearing J. H. Hale Tree—This new variety has been brought out with more advertising than any other sort for many years, and from reports is deserving of all that has been said. The fruit as we have seen it: Color is a deep yellow, overspread with carmine, except on the underside; the skin is smooth without much fuzz; the flesh firm, fine grained and unusually solid; parts freely from the stone; the flavor is most delicious, much better than yellow peaches usually run. Ripens a few days before Elberta.

The Famous ELBERTA

Large, yellow with red cheek, flesh yellow, firm, juicy, of high quality. Exceedingly prolific, sure bearer and hardy. Is doing well in all peach sections, North and South. One of the leading market varieties. August 1st.

ARKANSAS BLACK Another Brand New Peach

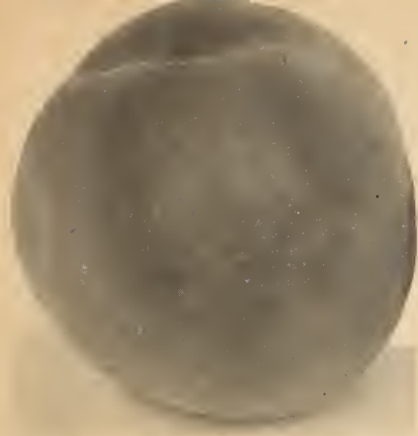
The Arkansas Black is the earliest peach known in this section. It ripens before the Mayflower; it is much larger than Mayflower and the most beautiful color we have yet seen for a peach. They are a very dark red getting almost black; clingstone and of good quality. They have a good color for several days before they are ripe, and from the time they are ripe the fine appearance they have and good quality make them sell like hot cakes.

Prices: 1 to 2 feet, 10c each; \$9.00 per 100. 3 to 5 feet, 35c each; \$3.50 per doz.; \$25.00 per 100.

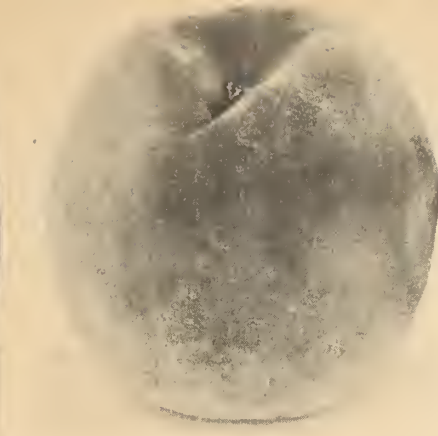
Hazen, Ala., April 27, 1942.
Benton County Nursery,
Rogers, Ark.
Dear Sirs:
I thought that you would be pleased to hear that peach trees ordered by me through the Southern Farmer (Ala.), were received promptly and in perfect condition. The yard man who planted them for me said today that every tree has new leaves, and feels certain that each tree will bear fruit in due time. Thanking you for sending such fine specimens, I am,
Cordially,
MRS. MALENA K. KNIGHT.

New IMPROVED Elberta

NEW IMPROVED ELBERTA—The fruit is almost round, with deep red blush on the side; it is easily 4 to 5 inches in diameter with excellent flavor. A few years ago a local fruit man gave \$5.00 for a bushel (when he could and was buying ordinary Elbertas for \$1.50 to \$2.00 per bushel), which was presented to the president of the Frisco Railroad Co. This fruit dealer was informed by the railroad officials that they could place a carload of that quality of Elbertas and pay the grower \$5.00 per bushel if they could be had.
Prices: 1 to 2 feet, 10c each; \$9.00 per 100. 3 to 5 feet, 35c each; \$3.50 per doz.; \$25.00 per 100.



BELLE OF GEORGIA



EARLY CRAWFORD

TREES

Early, Medium and Late Varieties

ELBERTA CLING—Mid-Season Yellow Clingstone—An immense size yellow peach that looks like Elberta, but is a perfect clingstone. The tree is a sure heavy cropper and the fruit is of superb quality. Flesh firm, excellent shipper; goes on the market in good condition and brings top prices.

EARLY ELBERTA—Freestone, mid-season; yellow. The Early Elberta is truly named. It is of the Elberta type, large, golden yellow which is in beautiful contrast to the rich blush on the sunny cheek. The flesh is yellow like the Elberta but far better quality, sweeter and finer grained; better quality, higher color and a week earlier—going out as the Elberta is coming in. As a canning peach it has better flavor and color than the regular Elberta.

CRAWFORD'S EARLY—This magnificent large yellow freestone peach. Good quality and a beauty, which makes it one of the most popular varieties. August.

Late Varieties

LATE ELBERTA—Late yellow freestone. Best sort between Hale and Krummel. Looks just exactly like Elberta, but ripens two weeks after it. Better flavor. One of the best shippers, comes on market when yellow peaches bring top prices. Tree satisfactory in growth, bearing and hardiness. It has been one of our most satisfactory varieties. Late peaches are profitable. Fourteen days after Elberta. Cooking, eating, canning, market.

MAMMOTH HEATH CLING—Very late white. Best strain of the well known White Heath. Fruit tender, melting, juicy, luscious, firm; does not bruise easily and ships well. Tree good grower, hardy, 40 days after Elberta. Cooking, eating and market.

OLD FASHIONED RED INDIAN—Very highly colored, red as blood to the seed, very large. Fruit so large that it would not go into a pint tin cup. There are many strains of Red Indian peaches on the market and a great many are very small and undesirable. Our buds from which our Red Indian were grown were cut from a tree. We believe that this strain is the very best of all the strains.

WHITE ENGLISH—Cling. Ripe latter part of September. Of good size; skin between white and yellow; flesh white, firm, fine texture, juicy and of excellent flavor. There are several types of the White English peach, as is well known. All have their merits, but none will measure up to the one we are now offering. There has been a strong demand for many years of the true White English peach, and after looking over the field for nearly 40 years, we have found it.

Extra Late Varieties

STINSON'S OCTOBER—Cling. Ripens October 1 to 15. Large white, with showy red cheek; flesh white and of fine flavor. One of the best and most popular peaches.

KRUMMEL OCTOBER—Best Late Peach. Latest yellow freestone. Gloriously red and gold—handsomest, best of all late peaches. Hangs on after all others—till frost. Of great size, almost round, deep yellow, covered with carmine cheeks; luscious, sweet, no bitterness next to the pit. Flesh firm and it ships perfectly. A general favorite for sweet pickles. Tree is a strong grower, extremely hardy, bears young and seldom fails. Everywhere—East, West, North, South, the queen of all late peaches. Late varieties always pay, and Krummel leads in big profits. It comes on the market after all other good freestones are gone and peach lovers gladly pay highest prices for them. Forty days after Elberta. Cooking, eating, canning, market.

Plant These Promising New NEW PEACHES

OCTOBER BEAUTY—Clingstone. Ripens from 1st to 10th of October. Creamy yellow with red blush. Large; prolific; high quality.

JUNE ELBERTA (Mikado)—Ripens about 30 days before Elberta. Yellow with red blush. High quality. Very productive. Semi-cling.

SOUTH HAVEN—Freestone. Ripens about 10 days before Elberta. Will bear full crop almost every year when Elbertas fail. Large yellow peach. Good quality.

HILEY—Freestone. An early Belle of Georgia peach. Good quality; white with pink blush.

MURRY BEAUTY—Freestone. Ripens about 10 days before Elberta. Large, creamy white with deep red blush, yellow meat, good quality and shipper.

GOLDEN JUBILEE—Freestone. Ripens about 20 days before Elberta. Yellow peach with deep pink blush. One of the hardest peaches known.

ARKANSAS SEEDLING—Large clingstone with pink blush. Ripens September 1st. One of the best varieties for making sweet pickles.

LATE BELLE OF GEORGIA—In the recent year in which the temperature dropped suddenly to 22 below zero, this tree produced the only peach in our orchard and in Benton County as far as we know. The cold was so severe that a great many apple and peach trees were killed outright, roots and all, while this tree was not damaged even on the most tender twigs. This peach resembles a Bell of Georgia and is a heavy bearer, the fruit is of medium size and excellent quality. It seems to be an exceptionally hardy tree, bearing a good crop when others bear a very light crop or none at all on account of cold winters or springs. Fruit is white with a pink blush. It's a freestone and ripens 20 days after Elberta.

GOLDEN SWEET—Clingstone. Ripens ten days before Elberta. Larger than Elberta. Yellow or gold flesh. Prolific, fine quality.

PALM SEEDLING—Freestone. Ripens 20 days after Elberta; white peach with pink blush. Unusually attractive blossoms with long blooming period.

These Prices Cancel All Previous Quotations

Madison County Mammoth

The largest peach we have ever known. The giant of the peach family. This peach originated in Madison County, Ark., and always took first prize when put on exhibition at fairs and fruit shows. The peach is yellow, overlaid with carmine. The texture is fine-grained and firm; the flavor is very pleasant, rich and juicy, which makes it one of the very best in quality. Ripens about 20 days after Elberta. Only a few trees for the market this season.

3 to 5 ft., 40c Each; \$4.00 per dozen.

Bliss Everbearing Peach

A freestone. Red in color, good size and fine quality; begins to ripen about June 10th and continues until September 15th. A fine peach for home or commercial use.

40c Each; \$4.00 per dozen.

Peaches as Low as 7c Each . . Refer to Page 2



BURBANK



AMERICA



WANETA

PLUM TREES

STANDARD VARIETIES

BURBANK—Large, nearly globular, clear cherry red with thin lilac bloom; flesh deep yellow; rich, very sweet, with a peculiar and agreeable flavor. Vigorous and a very early bearer. Last of July.

RED JUNE—The best plum, ripening before Abundance. Medium to large; deep vermilion red, with handsome blooms, flesh light lemon-yellow, firm; moderately juicy; fine quality. Tree upright, spreading, vigorous and hardy; productive.

HANSKA PLUM—The color of the Hanska when fully ripe is a deep bright red, with firm flesh and of high quality. When fully ripe they are fragrant like the apricot and when cooked the strong apricot flavor is brought out to perfection, entirely unlike any native plum. The fruit has a small pit. The tree is a profuse bloomer, grows tall and is of rapid growth. The trees often bear when they are only two and three years old. Freestone.

Hybrid Persimmons

Some of these should be planted by every family. The fruit often measures ten inches in circumference. They ripen in August, September and October. The trees bear young, and are very ornamental.

EUREKA—Very large, oblong, pointed, flesh yellow, skin red.

HYAKUME—Large round; skin orange red; flesh brown or dark; very sweet.

Overton, Texas

Benton County Nursery,
Rogers, Ark.

Dear Sirs:

I received my order well packed and was well pleased with the trees. It was my first order and it surely surprised us in the size of trees as we expected smaller trees at such a cheap price. The flower bulbs were very nice also. I shall tell my friends and neighbors about you. I expect to order more from you later.

Your customer,
Z. H. DORSEY.

HYBRID PLUMS

AMERICA—Very early, hybrid. A full brother of Gold, the sensational \$3,000 plum. Same parentage—a cross between Burbank and Robinson (Native). From the far-reaching experimental hybridizing of 20,000,000 crossbred seedlings by the great scientist, Luther Burbank, came two grand plums—Gold and America; it was then plum growing received its greatest impetus. America is large, glossy, coral red, one of the most beautiful and delicious plums ever grown. In our orchard it is the one variety that can always be depended upon for a crop. Tree large, very vigorous, thoroughly hardy, bears extremely young, and bears enormous crops every year. Succeeds everywhere. Eating, cooking, market.

"\$4.00 per bushel. Heads the list as usual. Bent to the ground with large handsome fruit. Visitors can scarcely believe their own eyes. Eight year trees bore three bushels each that brought \$4.00 per bushel. Good quality and does not rot. Sturdy grower and exceptionally hardy."—E. H. Riehl, III, Exp. Sta.

SATSUMA or BLOOD—Flesh firm, juicy, dark red or blood color, well flavored and brought \$4.00 per bushel. Good quality and firm; keeps well, pit small. Unsurpassed in quality for canning. Tree very vigorous. One of the most valuable varieties of this section and adapted to the middle and northern states. Middle of July.

SIX WEEKS—One of the best productive plums grown; ripens early; of fine flavor; red in color; good to eat fresh and fine for cooking or preserving. Best all around plum for the South.

STANLEY PRUNE—Medium large; purplish-black; blue bloom; free; flesh greenish-yellow, juicy, sweet and of good quality; will hang on tree after ripening; splendid for drying and market. Tree very productive. September.

WANETA—Regarded as the largest and best all around newer sort. Bright red, delicious quality, small pit, skin free from acidity, very productive and an early bearer, often producing fruit two inches in diameter. This is Prof. Hansen's masterpiece in plums and you will make no mistake in planting them liberally.

SAPA—A rich glossy dark purple skin variety, a very fine perfectly hardy new plum. Every home orchard should have some of these.

OPATA—A rich dark red oblong plum that is very delicious. Bears prolifically. Tree is tall, upright growing. An excellent variety for home and market use.

LEE'S BLUE—Very rich in color and quality. Freestone. Ripens the same time as the America. Be sure to try this one.

DAMSON—A medium sized dark purple variety which is very productive; esteemed for preserving and good for eating out of hand. Ripens late August to early September.

GOLDEN (Gold)—From twenty million native, hybrid and cross-bred seedlings, grown by himself, Luther Burbank made this his first choice. This was also his first great origination; and though since he produced many, many fruits, never has he produced one that can surpass or equal in all respects the Golden. Though a small dwarf-like tree, with small slender limbs, this is one of the hardiest, strongest trees. The finest plums and one of the most beautiful, a light transparent golden yellow, almost covered with a lovely bluish. In nearly every state of the Union this plum has been fruited and from them all come fine reports. This plum is at its best on dry, thin or clay soil. Leave it on the tree until it becomes highly colored and then it is delicious.

EARLY GOLD (Shiro)—Very early. Hybrid. A pure transparent golden yellow plum, large and handsome—a huge honey drop; sweet, excellent quality. Tree hardy, bears regularly, immense crops, and is satisfactory in every way. A tree loaded with this golden fruit is a wonderful sight. Propagated from a heavy bearing strain on our own grounds. Another Burbank production that has made good, it is a great favorite in the South because of its high resistance to fungus diseases.

FIGS

Figs should be planted more extensively. Do not let the sprouts or suckers grow, but prune the trees so as to have clean bodies at least two feet high. Cut tops back to six or twelve inches above the ground when planting. Such trees will bear fruit and will stand much colder weather than if the sprouts are allowed to grow.

BROWN TURKEY—July, August and September. Very large, bluish purple.

MAGNOLIA—July, August and September. Large pale green or white; shape varies from ordinary fig shape to very short or flat; always bears at one year old, and if frozen will bear on the young wood the first year. In some sections it is called Never-fail.



IMPROVED
ELBERTA PEACH



BURBANK PLUM

**PEACH
Special . . .**

2 Mayflower	2 Krummel October
3 Early Rose	3 J. H. Hale
2 Heath Cling	3 Belle of Georgia

Varieties that ripen from early until late. Well rooted, 3 to 5 ft. size. **\$2.50** Prepaid
ALL FOR



GARBER
PEAR



BARTLETT PEAR



HALE
HAVEN
PEACH



GEM
EVERBEARING



OZARK
BEAUTY
BLACKBERRY



ELDORADO BLACKBERRY

Home Garden
STRAWBERRY
Special ...

50 AROMA—Fine flavor.
25 BLAKEMORE—Very productive.
25 GEM EVERBEARING

All choice plants. Guaranteed to reach you in good condition.

\$2.00 POST PAID

Our Favorite
RASPBERRY
Special ...

50 LATHAM—Very large, red.
50 NEW LOGAN—Black cap.
50 CHIEF—Red, high quality.

150 PLANTS **\$3.00**
Postpaid, for only

Order Collection No. 7



LATHAM RASPBERRY

BLACKBERRY
Special ...

50 ELDORADO
25 OZARK BEAUTY
25 DALLAS

100 PLANTS **\$1.50**
Prepaid, for only

Order Collection No. 11



PEAR TREES

**As Low
as 20¢ EACH**

Refer to Enclosed
Price List



SECKEL (SUGAR PEAR)

Culture

Pears will grow on almost any soil but will do best on a high elevation, provided the subsoil is not too wet. Wherever this is the case the ground should be thoroughly under-drained. In very poor soil a heavy top dressing of manure in the fall will be of advantage. Standard Pear trees should be planted twenty feet apart each way.

Pears are subject to fire blight, a disease controlled only by cutting back the branches beyond the point of injury.

Do not allow pears to ripen on the trees. The highest quality results from gathering fruit ten days before it is ripe. Winter pears are best stored before the heavy frost.

Early Varieties

BARTLETT—Large size, with beautiful blush next to the sun; buttery; very juicy, and highly flavored; bears early. August and September.

WILDER EARLY—One of the very earliest pears. Size medium greenish yellow, with a brownish red cheek and numerous dots; flesh white, fine grained, melting, excellent. Always finds a ready sale in market. Largely grown by commercial orchardists. Tree bears good crops early and annually. August and September.



SEEDLESS PEAR

Brand new variety. Practically seedless. Solid all the way through. Ideal for canning. No waste. It is of the Bartlett type, pure white flesh with yellow blushed skin. Ripens 10 days later than Bartlett, and trees bear when 3 years old. A 5-year tree known to bear 3 bushels of fruit.

2 to 3 ft. size \$1.00 each

Autumn Varieties

FLEMISH BEAUTY—Large, beautiful, juicy, melting, rich and fine; a good bearer; one of the hardiest and does well nearly everywhere. September and October.

GARBER—Very large, oval, narrowing at both ends; yellow as an orange; flesh whitish, juicy, sweet and very pleasant. Tree an upright grower with heavy, dark green foliage. September.

KIEFFER—Large, golden yellow, often blushed in the sun; juicy and melting. One of the best for preserving and canning; the most profitable to grow. Tree healthy, hardy and vigorous. It is liable to overbear, therefore special pains should be taken to thin the fruit.

PINEAPPLE or BLIGHT PROOF—This pear is very attractive; yellow with conspicuous brown specks, is very beautiful and has a distinct, pleasing odor which has been suggested by some as resembling that of pineapple. For this reason the name "Pineapple Pear" has been adopted for it. The tree is a vigorous grower, has beautiful glossy foliage and is very prolific. Ripens last of August.

DOUGLAS—Blight proof; will bear fruit second year after planting; is very productive. The fruit is larger than Kieffer or Bartlett. The color is golden yellow, often with pink shading. The flesh is white, very tender and juicy and excellent flavor.

MULBERRIES

DOWNING—Fruit is rich, sub-acid flavor, lasts six weeks. Stands winter of western middle states.

STUBBS—Originated in Laurens County, Georgia. A tree of fine growth, beautiful foliage; fruit is of enormous size, frequently two inches in length; quality excellent. Lasts two months; extremely rare variety.

Planting Distance for Trees and Plants

	Feet apart
Apple	25 to 35
Pear	20 to 25
Cherry	18 to 25
Peach	18 to 25
Plums	15 to 20
Quince	10 to 12
Figs	12 to 15
Mulberry	25 to 30
Japan Persimmon	15 to 25
Pecans	40 to 60
Grapes	8 to 10
Blackberry, 3 feet apart in row	7
Dewberry, 2 feet apart in row	6
Raspberry, 3 feet in row	7
Strawberries, 2 to 3 feet in rows	4

SECKEL (Sugar Pear)—Yellowish russet, rather small size with red cheek. Flesh white, and very juicy and sweet. Ripens in August. Fine for pickling.

Gentlemen:

About a year ago I bought some trees from the Benton County Nursery, and at the time I bought a like number from Nurseries, Inc. The two groups of trees were set side by side, and I found out through this simple experiment that 98 per cent of the Benton County Nursery trees lived and did well, while 42 per cent of the others lived. Then in the spring of 1935, I had over 200 trees stolen, and of these trees 191 were trees that had been bought from Benton County Nursery. I was told later by a neighbor, "The ones who took your trees, sure knew trees, for they took only your best trees." That's why I hope to get more Benton County Nursery stock.

G. L. WATSON,
Kansas City, Mo.

3223 E. 32nd St.

Dear Sir:

I just received your special list of fruit trees offered. In the year 1933 I bought of you six Bartlett Pear trees, and I never saw any trees grow as these did. In 1933 and 1934 we had such dry weather that not even grass grew. So many young orchards died out. I bought the six pear trees for my daughters as a remembrance and set them out for them. One was chewed off about 1 foot from the ground. I trimmed it off in 1934; today it is as tall as the others and more bushy.

Box 273, Chelsea, Iowa.
JNO. POSEKARRY,

Number of Trees Per Acre at Different Distances

Rule: Multiply the distance the plants are set apart, in the row, and the product will be the number of square feet for each plant, or hill, which, divided into the number of square feet in an acre (43,560), gives the number of trees or plants per acre.

Distance apart	No. of trees
10 feet by 10 feet	435
11 feet by 11 feet	360
12 feet by 12 feet	302
13 feet by 13 feet	257
14 feet by 14 feet	222
15 feet by 15 feet	193
16 feet by 16 feet	170
17 feet by 17 feet	150
18 feet by 18 feet	134
19 feet by 19 feet	120
20 feet by 20 feet	108
25 feet by 25 feet	69
30 feet by 30 feet	48
33 feet by 33 feet	40
40 feet by 40 feet	27



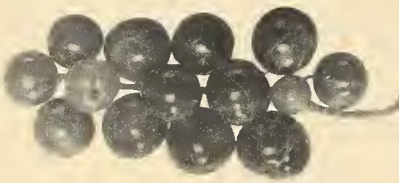
CUMBERLAND

RASPBERRIES BLACK VARIETIES

CUMBERLAND—The largest of all the blackcaps; coal black berries; very firm and the quality of the very best; excellent shipper. Bush is a strong grower, stocky canes and unusually prolific. Mid-season.

PEARL—Prolong your Black Raspberry season and make money until the end. The NEW PEARL (late) is an extra large glossy appearing Black Raspberry of high quality. It is very rich in flavor and is a fancy table berry. The plants are strong growers and highly resistant to disease; also easy to grow.

NEW LOGAN BLACKCAP—The best dependable early Black Raspberry grown. In some localities where it has been grown for the past few years it has almost displaced the other standard varieties. Berries are as large as the Cumberland, bears as heavily and ripens a week ahead of Cumberland. This gives the grower a chance to make some really good money. One of the New Logan's outstanding characteristics is its resistance to mosaic and other Raspberry diseases. We have a fine lot of thrifty plants to offer.



CURRENTS

The Currant is one of the most valuable of the small fruits. They mature just before Raspberries and can be used either raw or cooked. Being very hardy, they do not winter kill and are easy of cultivation, requiring little care. They can be grown in any good garden soil.

PERFECTION (Red)—This truly wonderful new currant has both large size and extra good quality. Perfectly healthy; a vigorous grower, and in fact an extra fine red currant in every way. Widely advertised all over the country.

WHITE GRAPE—Very large yellowish white. The finest of the white sorts. Very distinct from White Dutch, having a low spreading habit and dark green foliage. Very productive.

Enjoy Plenty of Ozark BERRIES Fresh from your own garden...

Gentlemen:

I recently purchased 15 Chief Raspberry plants. I set them in new ground and have raised three hundred plants from them. We have picked 25 quarts of berries from them and the quality was excellent.

I will remember the Benton County Nursery Company when I want more nursery stock. ARCH WOOD,
Star Route Dorsey, Ill.

PURPLE VARIETIES

SODUS—An excellent home use berry, delicious for dessert, canning, preserves, jelly, etc. A very large, juicy fruit, a fruit that is easily grown and very hardy; adapted to cold and dry weather; does not have many briars, and yields very heavily.

RED VARIETIES

FLAMING GIANT—The largest of all red Raspberries; a very rank grower, and will produce enormous crops of excellent quality berries.

ST. REGIS EVERBEARING—The new everbearing variety. It gives a crop of fruit all summer and autumn, fruiting on the old canes in generous quantities until late in August. By this date berries begin to ripen on the young canes and continue until late autumn. Berries are a bright crimson of large size and of surpassing quality, sugary with full raspberry flavor. It succeeds upon all soils, whether light and sandy, or cold, heavy clay and the canes are absolutely hardy.

SEE PRICE LIST
ATTACHED TO
THIS CATALOG



LATHAM

LATHAM (Minnesota No. 4)—A new introduction from the Minnesota state breeding farm. A very firm, large and most prolific red raspberry yet introduced. It is extremely hardy and of the very best quality. It has been largely planted in Minnesota and has given the best results. It stands shipping well and tops the market. It is mosaic-free, a disease that attacks raspberries sometimes. Plant some in your garden. You will never regret it. It is claimed that many fruit growers are averaging \$1,000 per acre a year.

CHIEF (The New Red Raspberry)—Here is a wonderful Red Raspberry that is forging ahead as fast as did its illustrious ancestor, Latham, and it has just as important a place to fill for it is ten days earlier than Latham, ripening at a time when Red Raspberries bring the most on all markets. Chief was originated at Minnesota State Fruit Breeding Farm and is a selection from 4,000 seedlings of Latham. It is immensely productive, even surpassing Latham in that respect; the berries are of good size and excellent quality and the bushes are absolutely hardy and resistant to disease.

Records Made With Red Raspberries

One acre St. Regis produced 186 crates that sold for \$630.00, and the same acre produced 75 crates in the fall that sold for more than \$200.00. Grown and sold by Austin Cline, Garfield, Arkansas.



GOOSEBERRIES

Gooseberries should be planted in good rich soil and well manured once a year. Prune regularly, thoroughly cutting out all dead wood and surplus branches. Plant in rows 4 to 6 feet apart in row. It is well to mulch heavily in the fall. Plants are hardy, rugged and easily grown.

OREGON CHAMPION GOOSEBERRY—Berries very large, brownish red color, very sweet and fine for table use and pies. Bush a strong grower, healthy, not very thorny and a pro-

lific bearer. One of the best berries for the market.

DOWNING—Fruit larger than Houghton, roundish, light green with distinct veins; skin smooth, flesh rather soft, juicy and very good. Vigorous and productive. The most popular variety for market growing.

HOUGHTON—A medium sized American variety which bears abundant and regular crops and never mildews; fruit smooth; red, tender, and very good; valuable.

Everbearing STRAWBERRIES

... for home and market

"Strawberries the Finest I have Seen"

Columbus, Ohio

Dear Sir:

This is to notify you that I have received the second order of strawberry plants and they were the finest I have seen in a long time. After placing the roots in water over night I had six blooms the following morning.

I will do all I can to repay you for the courtesies you have shown me.

Thanking you again for your splendid service I am,
Yours very truly,

W. A. HENDRIX,
2830 Cleveland Ave.



EARLY ST. LOUIS—Profitable by reason of its productiveness and earliness; requires deep, heavy soil, plant exceedingly vigorous and healthy; fruit large, handsome and good, rather long in shape and of a bright, glossy crimson; early.

SENATOR DUNLAP—This is a great producer and a money maker and a good all purpose variety. Easy to grow, just the thing for the beginner. Will grow a full crop on most any kind of soil. Is considered one of the very best for canning and home use. Exceedingly productive, plants small but have long roots that make it a sure cropper and a drouth resister. We have a wonderful productive strain of Dunlap that never fails to please.

COOPER—Large, light crimson, flesh of firm, good quality. Plants vigorous but should be planted in swamps or moist, clay soils. Perfect, late.

AROMA—An old standby that we have been growing for over thirty years. The demand for Aroma plants is tremendous, there is never enough to supply the demand. In matters of productiveness, quality, flavor and market value, the Aroma is so much superior to the other old standard late varieties that we urge our customers to plant Aroma heavily and increase their profits by prolonging their berry season. Aroma does well wherever grown and no matter where you are located you can safely plant heavily to Aroma.

KLONDIKE (Improved)—This is the standard berry for the southern and middle states and does fairly well in the northern states. Productive, brilliantly colored and so firm that on the northern market it classes as a re-shipper; that is, a berry firm

enough to re-ship to the smaller tributary markets and therefore commands top-notch prices.

BLAKEMORE—The new strawberry that is creating a sensation among strawberry growers everywhere it has been grown. This berry, originated by the U. S. Department of Agriculture, and is a cross of Premier and Missionary. The berries are slightly blunted, conic with broad shoulders, slight neck, much firmer than Premier or Klondike. Blakemore has proven considerably superior as a market variety. Berries are bright red color, tough skin, firm flesh, solid center, with excellent flavor; very productive, fine shipper and earlier than Klondike; blooms later and will escape frost when Klondikes are killed.

MISSIONARY—A very well established variety, leading the commercial sorts in central Florida. Earliness is its chief commercial asset, although the berries stand shipping well, and the plants are free from disease. Very vigorous, hardy grower.

DORSETT—A sister variety to Fairfax. Excels Aroma. Berries are large, finest quality, very firm. Perfect flowering so can be planted alone. Strong grower, very productive.

PREMIER—The Premier is one of the most popular varieties that we offer and it well deserves all the praise that can be given it, for several reasons: 1. Premier is among the first to ripen; 2. fruit large size and deep red color; 3. firm flesh and excellent quality; 4. heavy yielder and makes thrifty growth; 5. you can depend on Premier for a good crop when other varieties are a failure; 6. foliage is not susceptible to the leaf spot which

has ruined many strawberry patches. We unhesitatingly recommend the Premier for either home or commercial planting.

GEM—The universal everbearer, an old favorite; succeeds in all soils and climates except in the extreme south; fruits heavily the first season the plants are set; very heavy cropper of medium large, sweet, mild, and beautifully colored berries. Grow it in hills or narrow rows.

MASTODON (The Jumbo Everbearer)—From all indications and reports, Mastodon will hold first place among the everbearers. It's a very beautiful and strong grower, a heavy fruiter, and the berries are as large as strawberries grow. We have several years' experience with the Mastodon and the more we see of it the better we like it, and we honestly believe you will like it. Anyway, we advise you to try some Mastodon plants this year. We want you to see a real heavy fruiting everbearer which produces jumbo berries of very good quality. In order to get you interested we are making the price on Mastodon plants just as low as possible.

RIPE STRAWBERRIES IN 60 DAYS
Benton County Nursery Co.,
Rogers, Ark.
Gentlemen:

This is to tell you how much I think of your nursery stock. In February, I ordered Concord Grape Vines, Mastodon Strawberries and Mayflower, Red Bird Cling and Early Wheeler Peaches. In 60 days we had ripe strawberries, in less than six months we had ripe grapes, in 16 months we had ripe peaches. The trees and vines are healthy and vigorous. Today I am sending you another order and two of my neighbors are sending orders with mine because they like the looks of my orchard.

L. D. WARREN,
Route 2
Henderson, Texas.

BIG \$1.00 FRUIT OFFER

PREPAID

All well rooted Trees and Berry Plants, our selection, of the best varieties that ripen early to late.

\$1 Apple Special.....	12 Trees
\$1 Peach Special.....	15 Trees
\$1 Cherry Special.....	4 Trees
\$1 Plum Special.....	7 Trees
\$1 Grape Special	12 Vines
\$1 Raspberry Special	50 Vines
\$1 Blackberry Special	75 Vines
\$1 Dewberry Special.....	75 Vines
\$1 Strawberry Special.....	150 Plants



McDONALD

Make Big Profits By Planting OZARK GROWN B E R GUARA

There is a great and increasing demand for blackberries. There is no fruit capable of yielding greater profit. There will usually be from 150 to as high as 250 cases of 24 quarts from an acre, and that is usually consistent to figure on an average of \$100 to \$150 per acre after paying for picking, boxes and express.

For field culture plant three feet apart in rows six feet apart. For garden culture plant four feet apart in rows five feet apart.

BLACK- BERRIES

OZARK BEAUTY—Superior to any blackberry grown where it has become known, this blackberry is hardy, stands drouth. It is almost free from seeds and has no objectionable core. It has little or no juice, the pits being filled with thick syrup or flesh of the berry. Ripens just after Early Harvest. The berries are very large and best quality. You will make no mistake in ordering Ozark Beauty.



LUCRETIA DEWBERRY



BOYSENBERRY

Said to be the largest and finest vine berry ever introduced. The Boysenberry is a new variety produced by crossing blackberries, raspberries and Loganberries. The flavor is a very pleasing blend of these varieties. It has few and soft seeds. The plant is very vigorous and hardy, coming through in good condition, without injury, in temperatures as low as 10 below zero. The berries are extremely large, many of the berries getting more than two inches long and over one inch in diameter.

Benton County Nursery,
Rogers, Ark.
Dear Sir:
I wish to tell you about the Blackberries we bought from you January 29th. Our order number was 1525. On June 9th we picked our first blackberries from our 15 McDonald vines. Was delighted with them, as some berries measured two inches long by two and one-fourth inches around. They were fine flavored and heavy croppers. We picked about twenty quarts in the four weeks the vines were bearing, then a few each day until June 25th. We didn't sell any berries, but I took first prize at the County Fair for my preserves. All our Benton County Nursery stock arrived in good condition.
MRS. FRANK MUDER,
Sedan, Kansas.



YOUNGBERRY

The new Youngberry has achieved the greatest success ever scored by any of the berry family. It not only bears heavily but the fruit is easy to handle; it is very attractive, ships well, keeps well and cans well. It has so many commercial possibilities and it fits in so well in the home garden that everybody should be interested in having a few vines or a commercial planting. The Youngberry is the result of the careful and patient efforts of Mr. Young in crossing the Loganberry and the Texas Dewberry. It has given the world its choicest bush berry with characteristics in size, appearance, flavor and general usefulness that has opened new possibilities in berry culture.

Youngberries are universally liked and easily grown. They are among the largest berries; of dark wine color, have a minimum of seed, highly flavored and yield a rich looking cherry colored juice. In the home garden you will find that more fruit will be produced from a few Youngberry bushes than any others that will grow on the same amount of ground. Youngberries thrive where any other berry fruits grow but do best in states of the same latitudes as Ohio and south.



RIES NTEED

BLOWER BLACKBERRY—"The giant of all blackberries." The fruit is exceedingly sweet. This is a first-class shipper. The season of ripening is from the middle of July until frost, with the bulk of the crop maturing in the month of August. It is a hardy variety. It has endured 20 degrees below zero.

EARLY HARVEST—One of the earliest blackberries in cultivation, a compact, dwarf grower, fruit rather small and of good quality; heavy bearer.

EVERBEARING BLACKBERRY—This new everbearing blackberry is one of the latest creations in blackberries. They bear enormous crops for three months, beginning to ripen just after the Early Harvest and continue almost until frost; the berry is very large, of fine quality, melting in your mouth and does not have the large core that is so common in so many kinds of blackberries. The canes are husky growing plants, standing erect, resembling small trees from 6 to 8 feet high and branch heavily. We have only a very few for the market this year.

DEWBERRIES

THORNLESS DEWBERRY—Perfectly free from thorns; berries are of very best quality, large in size, rich and juicy, and early.

LUCRETIA—Fruit very large, luscious and sweet; perfectly hardy, healthy, enormously productive; a very prolific market fruit; the vines should be allowed to remain on the ground during the winter and staked up early in the spring. Fruit ripens early, is often one and one-half inches long.

PREMO—Much like Lucretia, but very distinct, and exceedingly early, being seven to ten days ahead and all cleaned off when Lucretia is beginning. Quality and size uniform. Was found in a Lucretia patch.

PROLIFIC—Berries much larger than those of any other Dewberry or Blackberry. It requires no trellis or stakes. The fruit is jet black and of very superior quality and flavor. For productiveness it outrivals all Dewberries.

\$3.00 BUYS LOADS OF FRUIT PREPAID

\$3.00 Apple and Peach Collection

Apple—4 Yellow Transparent, 3 Grimes Golden, 5 Delicious
Peach—5 Red Bird, 5 Early Elberta, 5 Chinese Cling

\$3.00 Cherry, Plum and Pear Collection

Cherry—2 Early Richmond, 2 Montmorency
Plum—2 Burbank, 2 Hanska, 2 America
Pear—2 Wilder, 2 Pineapple

\$3.00 Grape Special Collection

7 Moore's Early, 5 Niagara, 4 Delaware, 12 Concord

\$3.00 Blackberry Special Collection

50 Early Harvest, 50 McDonald, 25 Robinson

\$3.00 Raspberry Special Collection

100 St. Regis Everbearing, 25 Cumberland Black

\$3.00 Strawberry Special Collection

100 Improved Klondike, 100 Aroma, 50 Everbearing

MCDONALD—Enormously productive, outyielding any other known variety of blackberry. Ripens two weeks before Early Harvest, and is the earliest ripening of all blackberries. Can be sold for extra price before other varieties are on the market.

Read What This Customer Says

Bridgeton, N. J.

Benton County Nursery,
Rogers, Ark.
Gentlemen:

In the spring of 1939 I bought twenty-four fruit trees from you—apple, peach, pear and plum trees.

I never lost a tree and the growth they have made is wonderful. I have been buying stock for the last twenty years from companies from all parts of the United States and you gave me the best bargain I ever bought in fruit trees.

They were packed so they would carry two weeks without being dry—no stunted or moss covered trees in your stock.

Respectfully,

W. T. MORRIS,
614 Chestnut Ave.

THE NEW THORNLESS BLACKBERRY

—Entirely free from thorns and one of the best flavored berries. Bears heavily and grows well in all sections. Be sure to plant some this year. Price: 15c each; \$1.25 per dozen; \$10.00 per 100.

ROBINSON BLACKBERRY—Large, delicious berries, very prolific, and a valuable berry for the Southwest.

DALLAS BLACKBERRY—A Texas berry, large, black, firm and a strong grower. Ripens in mid-season.

ELDORADO—For many years Eldorado was the first main-crop variety to ripen; it has, with other notable virtues, great hardiness and freedom from blackberry rust in the plant, and handsome appearance and exceptionally high quality in the fruit. Although an old sort, it is still much prized for home and market east of the Rocky Mountains, and in this great region very seldom fails.

\$1.00 ORNAMENTAL OFFER

Assorted Colors, Best
Type Tall Bearded Iris

50 Roots \$1.00
PRE-PAID

Our Guarantee ...

Is that you must be satisfied or your money will be refunded for any items you purchase from us that are not what we represent them to be. Upon receipt of any stock ordered from us, if you are not perfectly satisfied, return it to us by express or mail and we will refund you all money paid us for the items returned and for all transportation charges paid by you.

All claims except stock not true to name must be made by June 1st.

GRAPES

Muscadine Class

SCUPPERNONG—Large, whitish yellow, good quality; bunches small, very productive and is considered one of the best wine grapes.

THOMAS—Muscadine type; color reddish purple; excellent flavor; tender and sweet; ripens in June.

50¢ each \$5.00 per 12

WHITE VARIETIES

POCKLINGTON—Seedling from the Concord. The vine is thoroughly hardy both in wood and foliage; it is a strong grower, never mildews in vine or foliage. The fruit is a light golden yellow, clear, juicy and sweet to the center, with little or no pulp; bunches very large, sometimes shouldered; berries round, very large and thickly set. Ripens with the Concord.

NIAGARA—Occupies the same position among the white varieties as Concord among the black. Bunch and berries large, greenish white, changing to pale yellow when fully ripe. Skin thin but tough; quality much like the Concord.

Our Four Best Grapes . . .

CACO GRAPE, Called by some the "Delicious"—This excellent grape is one of the most beautiful in color of any grape grown. The color is a deep red wine color; the berries are large and bunches of good size; ripens a week or ten days before Concord. It is so rich in sugar that it has an excellent flavor two weeks before it is fully ripe. The vine is a very strong, vigorous grower, healthy and prolific; the most productive of any grape grown in our experimental vineyards. It produces more bushels per acre than Concord and will sell for much more for a table grape; and for a wine grape it is claimed by some who know the value of grapes for wine to be the very best grape grown for wine and champagne. Very few varieties of grapes grown in America will make good champagne. This grape never cracks on the vines as many others do.

FREDONIA—The new, very early Black grape. Earlier than the Eclipse, larger and better quality. Earlier than Campbell's or Moore's Early; originated at the New York Experiment Station; has been thoroughly tested in their vineyards where over 75 varieties are fruiting and has proven superior in every way to any other early Black grape: It is fruiting at the Arkansas Experiment Station along with many other varieties, where it appears to be the best of all early grapes. Flavor excellent, juicy, retaining its fine quality long after it has become fully ripe; hangs on for weeks after fully ripe. Very large, compact clusters, covered with a productive and the earliest black grape grown.

PORTLAND GRAPE (New)—This is a new white grape, originated at the New York Experiment Station, Fredonia, New York. The earliest of all grapes, which means high prices on the market, with large bunches and also berries. Flesh sweet, juicy and of fine flavor and superior quality. The vine is a vigorous grower, healthy and hardy. The experiment station speaks very highly of it. Try this variety and we are sure you will not be disappointed.

EVERBEARING CYNTHIANA—This new Everbearing grape begins to ripen about the time the Concord does, and continues until frost. Has ripe grapes, green ones and blooms on it all the time after they begin to get ripe until the growing season is ended by frost. The grapes are same size and quality as the Cynthiana.

BLACK or PURPLE VARIETIES

CAMPBELL'S EARLY—Great big, fine colored, juicy, black grapes, full of the richest sweetness. The seeds are very small and part readily from the flesh. A heavy annual bearer and should be included in every collection.

MOORE'S EARLY—The best early purplish black variety, ripening three weeks ahead of Concord. It has a most pleasing taste, whether eaten fresh from the vine or made into grape butter.

CARMEN—Vines very thrifty, in fact, just as hardy as vines can be. The grapes are large and thick on the cluster. A cluster of these is solid nearly as a ball. Bears from one to two bushels per vine and the best eating grape we have ever seen. If you have been planting grapes that would not sell, plant some Carmen. They outsell anything else on the market. The Carmen grape begins to get ripe about August 10th and will hang on the vines after getting ripe, for several days.

CYNTHIANA—The best red wine grape known. We say the best because red wine made from this variety, grown at Bushburg, Mo., about 25 miles south of St. Louis on the Mississippi River, won first prize at the World's Exposition at Vienna, Austria, as the best red wine from all nations. This grape originated right here in Benton County, Arkansas. A very vigorous grower; for making grape arbors it is without an equal. For high, dry countries it appears to be at home as well as on the creek and river bottoms. It does not require a rich soil, but prefers a dry soil of moderate fertility. It is so sweet it is almost too rich to eat out of hand. It has a higher content of sugar than any grape known. The berries are about the size of the Delaware, while the clusters are large; color is black covered with blue bloom.

RED VARIETIES

DELAWARE—The bunches are small, compact, and sometimes shouldered; berries are small with thin but firm skin; flesh juicy, very sweet and refreshing and of the best quality for both table use and for wine. Ripens with Concord or a little before; vine is hardy, productive and a moderate grower.

BRIGHTON—Bunch large, shouldered; berries medium to large, round, dark red, tender, very little pulp, sweet, juicy, slightly aromatic and very good. Ripens early.

CATAWBA—Berries round and of good size; skin rather thick, pale red in shade, but a pretty deep red in sun, covered with a lilac bloom; flesh slightly pulpy, juicy, very sweet.

These Prices Cancel All Previous Quotations

**Bear Every Year
Last a Lifetime
Grow Everywhere
Everybody Likes Them**

CONCORD

Rightfully Called The King of Grapes

This variety grows and bears well on any kind of soil, high or low lands, stony or smooth lands, sandy or gumbo lands. It is the most widely known and most popular of grapes.

Bunches are large and compact, berries are large, round, and almost black, covered with blue blooms. Skin is thin, flesh sweet, pulpy and tender, quality good, very prolific and a good grower. Concord begins to get ripe about July 25th and continues for about three weeks.

This is the leading variety that is making the grape growers rich. It is grown extensively in Arkansas and Missouri for table grapes; is grown in Iowa, Michigan and New York extensively and sold to grape juice factories.

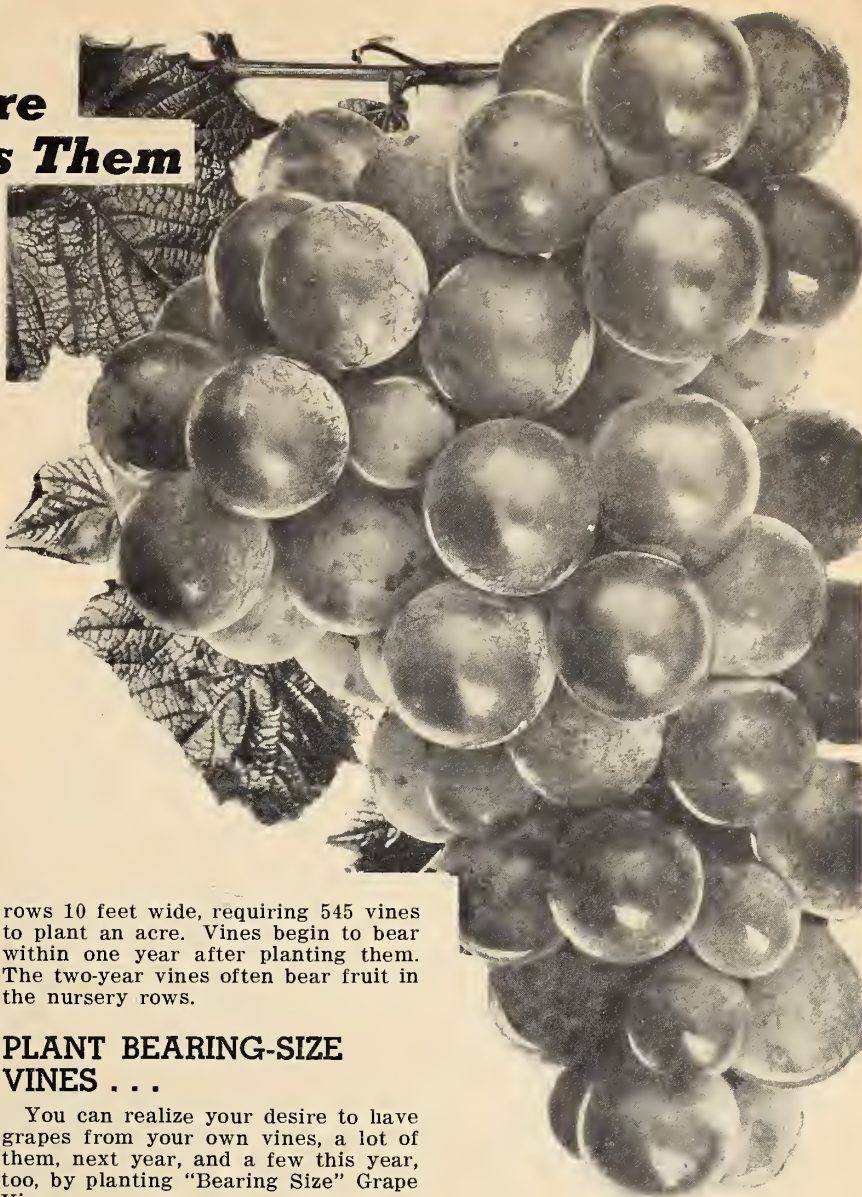
You will not make a mistake in planting largely of this variety; vines do well on arbors, walk shades, back yard fences, etc. Planted 6 to 8 feet apart, around your home, in back yard, etc., a few vines are valuable for quick and everlasting shade and for a perpetual source of fine grapes.

Some vineyards are producing more than \$150 worth per acre before they are out three years. In many instances the first crop will yield enough fruit to pay for the land they are growing on, for the vines and for all the cultivation and hoeing that has been done on the vineyard.

Grape vines are said to be longer lived than apple trees. It is claimed from good authority that grape vines will grow and produce valuable crops from 50 to 75 years.

They bear full crops when other fruits fail, when long drouths cause a failure in grain and cotton crops. In fact, they are the most dependable for paying crop of anything in the agricultural line.

The larger part of the vineyards planted and being planted are being set 8 feet in the rows and making the



rows 10 feet wide, requiring 545 vines to plant an acre. Vines begin to bear within one year after planting them. The two-year vines often bear fruit in the nursery rows.

PLANT BEARING-SIZE VINES . . .

You can realize your desire to have grapes from your own vines, a lot of them, next year, and a few this year, too, by planting "Bearing Size" Grape Vines.

"Bearing Size" Grape Vines are simply selected vines that are properly cultivated, sprayed and pruned for two years. They would bear their first crop this fall if left where they are.

They are grown especially for gardeners who want vines that will bear in as short time after planting as practical.

"Bearing Size" Grape Vines have vigorous canes, and a heavy mass of roots to correspond. They are dug, handled and packed with extreme care, so as to save all the roots, preserve the canes without injury, and get the vines into your hands in perfect condition to plant.

If carefully planted, spreading the roots naturally in moist, rich soil, and cutting the canes back about one-half, they will bear some grapes the same season planted, and produce nearly a full crop the next.

If we are out of any items your order calls for we will substitute with one as good or better, unless you tell us not to substitute.

AND GRAPE VINES OF SUPERIOR QUALITY . . .

These "Bearing Size" Grape Vines are produced by planting cuttings taken from vineyards that are famed for their production of quality grapes. The cuttings are set in our planting grounds here in the mountains. In this fertile soil, with its bracing atmosphere and long growing season, and with the best care of cultivation, these develop into extremely hardy, vigorous stock that makes rapid growth and produces wonderful crops of grapes, wherever planted.

Order at least a few vines of each variety described in this catalog. This will give you an assortment of red, white, blue and black, as well as early, midseason and late. A vineyard that will prove a source of pride, pleasure and profit to you as long as you live.



The Story of Us Hill-Billies

Who We Are . . .

We are a bunch of old fashioned, hard working, blue-eyed hill-billies, who grew up right here in these Ozark Mountains, on the farm, and made our living from what we could grow out of this mountain soil and all we know is to treat you exactly like we would want you to treat us if we were in your place and you were in ours. We would be "tickled pink" to work hard all the year and come out with a ten per cent profit.

What We Are . . .

We are natives of Arkansas, born and reared on farms in the Ozarks and our forefathers as far back as we can trace have all been agricultural people, and we do not know from which European country they formerly came. In fact, they have been in America for many, many generations.

Where We Are . . .

We are located in Arkansas—in the northwest corner county (Benton), only twelve miles south of the Missouri line and twenty-six miles east of the Oklahoma line; eighty-one miles almost due north of Fort Smith, Arkansas, and eighty-three miles, almost due south, of Joplin, Missouri; one hundred twenty-nine miles east of Tulsa, Oklahoma, and one hundred six miles southwest of Springfield, Missouri. On Federal highway 71 and 62, just south of Rogers, Arkansas.

ON THE TIP TOP OF THE OZARK MOUNTAINS where our growing season is almost thirty days shorter than at Fort Smith Arkansas. Our summers are short and nights are cool, and our growing season more like that of North Missouri, Iowa and Nebraska than Eastern and Southern Arkansas.

Hence, our stock is well adapted to the extreme Northern, Eastern and Western States, as well as being the best for Southern States.

Be Independent Plant this ONE ACRE HOME FRUIT ORCHARD \$50.00

Home orchards throughout the nation are becoming scarcer year by year. If better care of the trees and increased plantings do not take place soon, the home orchard will be a negligible factor in the fruit industry.

A home orchard, properly planned, planted, and cared for, should be one of the most valuable and appreciated plantings of the farm. However, if an orchard is not given at least as much care as the other farm crops receive, it will be neither profitable nor a source of pleasure. (It is far better never to set.) An orchard which is properly cared for should give a surplus of fruit for marketing profitably in any local community.

For this ONE-ACRE HOME ORCHARD we have selected the following kinds and numbers of fruits, and of the larger size trees and plants, we will ship you this lot, which would cost, at our catalog prices, over SEVENTY DOLLARS—for \$50.00.

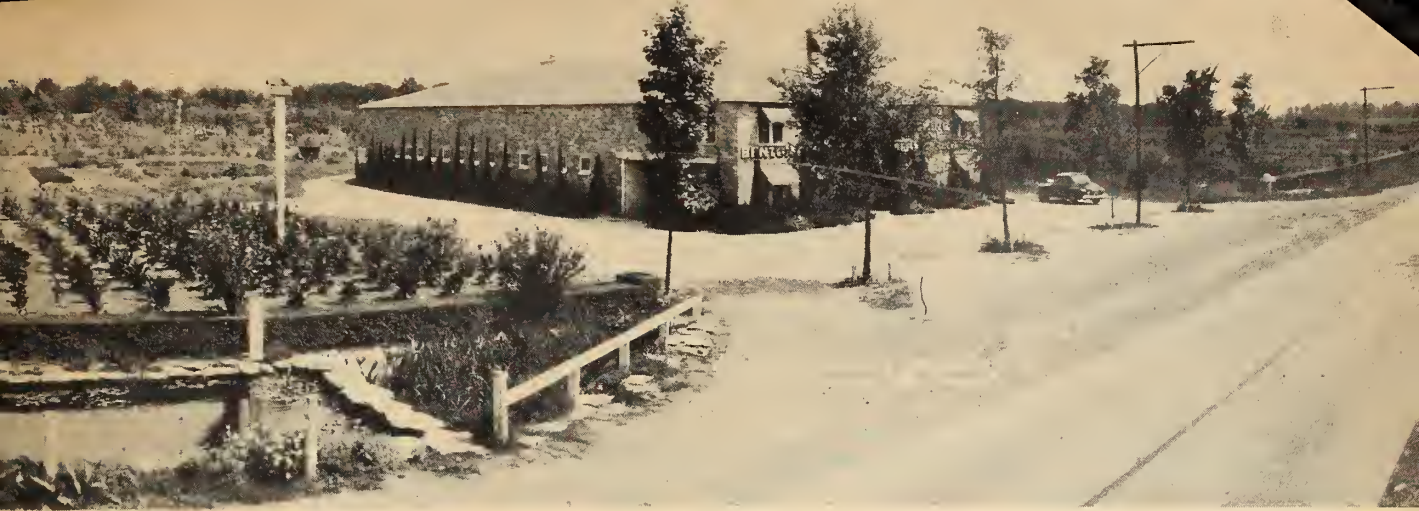
- 200 BLACKBERRIES—100 Ozark Beauty, 100 Early Harvest.
- 200 RASPBERRIES—100 St. Regis, 100 Latham.
- 150 STRAWBERRIES—50 Lucretia, 50 Austin, 50 Premo.
- 250 STRAWBERRIES—100 Blakemore, 100 Premier, 25 Early St. Louis, 25 Cooper.
- 25 YOUNGBERRIES.
- 6 JUNE BERRIES.
- 18 RHUBARB (Pie Plant)—18 Giant Victoria.
- 25 ASPARAGUS—25 Washington Rust Proof.
- 5 HORSERADISH.
- 30 GRAPES—12 Concord, 6 Moore's Early, 4 Caco, 4 Niagara, 4 Delaware.
- 26 APPLES, 3 to 5 ft.—2 Early Red Bird, 2 Maiden Blush, 5 Blood Red Delicious, 5 Yellow Delicious, 2 Red June, 2 Ada Red, 4 Jonathan, 4 Stayman Winesap.
- 26 PEACHES, 3 to 5 ft.—2 Stinson's October, 3 Arkansas Black, 4 Early Elberta, 4 Belle of Georgia, 2 White English, 2 Early Wheeler, 3 Alton, 4 J. H. Hale, 2 Red Indian.
- 8 PLUMS, 3 to 5 ft.—2 Early Gold, 2 Italian Prune, 2 America, 2 Hanska.
- 12 CHERRIES, 3 to 5 ft.—6 Large Montmorency, 3 Early Richmond, 3 English Morello.
- 6 PEARS (Blight-Proof), 3 to 5 ft.—3 Douglas, 3 Pine-apple.
- 2 QUINCE, 3 to 5 ft.—1 Champion, 1 Orange.
- 12 GOOSEBERRIES—3 Oregon Champion, 6 Houghton, 3 Downing.

In co-operating with our Government which is encouraging the planting of more fruits, etc., to help with the National Defense Program, we are offering the entire lot, delivered to your nearest express office, for \$50.00.

300 Fertile Acres of GROWING NURSERY STOCK

Thirteen Reasons Why You Should Buy From Us . . .

- 1—Because we sell you the best trees, plants and vines that can be produced at prices far below what others will ask you for the cheap, worthless kind. Our nursery stock is grown by the best method known to nurseries and no better can be produced regardless of prices. We offer \$100.00 reward for improved method on how to grow better nursery stock.
- 2—Because we prepay the postage or express charges on all orders amounting to \$10.00 or more, except Balled or Burlapped Evergreens.
- 3—Because we sell direct to the fruit growers, saving you the Agent's or middleman's commission.
- 4—Because we guarantee satisfaction or your money refunded, and we pay postage or express both ways.
- 5—Because we do not belong to any trust or combine, and are free to make our prices just as low as we believe we can afford.
- 6—Because all our trees and plants are guaranteed to be free from disease and insects, and have all been inspected by our State Inspector and each shipment bears a certificate of inspection.
- 7—Because we use every caution to keep all our varieties true to name and should a mistake occur and any variety prove untrue to name we will replace it free of charge or refund the price paid for it.
- 8—Because we grow and offer for sale only varieties that are known to be good fruits and money makers.
- 9—Because Benton County, Arkansas, has many, many acres of varieties of fruits, and we have under our close observation a greater variety of fruits and berries than our competitors.
- 10—Because Ozark Mountain, Arkansas Grown Nursery Stock is now considered by Horticulturists to be the best that can be produced.
- 11—Because trees and plants must be well rooted if success is to be made with them. Ours are the best to be had.
- 12—Because our old customers send us repeated orders and their neighbors send us their orders; a proof that they are well pleased.
- 13—Because we use extreme economy in both growing and selling our nursery stock, thereby saving money for you.



Spraying Guide for Fruit

CROPS	INSECTS AND DISEASES	MATERIALS	DILUTIONS		TIME TO SPRAY
			One Gal. of Water	50 Gals. of Water	
PEACH PLUM	Scale, Insects and Leaf Curl	Lime-Sulphur Sol. Oil Emulsion or Dry Lime-Sulphur	$\frac{1}{4}$ pint 18-20 teaspoonful	5-7 gallons 2 gallons 12-15 pounds	Before the buds swell. Add Bordeaux to Oil Emulsion to prevent leaf curl.
	Shot Hole or Fungi Curculio	Zinc Sulphate Arsenate of Lead	1 teaspoonful 2 teaspoonful	2 pounds $\frac{2}{3}$ to 1 pound	Combine with petal fall and later sprays. Use in combination with Dritomic Sulphur on petal fall, shuck and cover sprays.
CHERRY APRICOT	Scab and Brown Rot	Dry Mix, Dritomic Sulphur	12-20 teaspoonful 8 teaspoonful	8-10 pounds 2 $\frac{1}{2}$ pounds	1. When most of shucks are off. 2. Two weeks after shucks have dropped. 3. Four weeks before picking if necessary
	Borers	Paradichlorobenzene Ethylene Dichloride Emulsion	1 oz. 2 in from trunk of tree Sprinkled around trunk of tree		In the fall or spring. In the fall or spring.
APPLE PEAR	Scale Insects and Blister Mites	Lime-Sulphur Sol. Dry Lime-Sulphur	1 pint 18-20 teaspoonful	5-7 gallons 12-15 pounds	Dormant and delayed dormant. When buds begin to swell.
	Psylla, Slugs, Scab and Codling Moth	Bordeaux Mixture or Dry Lime-Sulphur or Lime-Sulphur Sol. with Arsenate of Lead	12-16 teaspoonful 5-6 teaspoonful $\frac{1}{5}$ pint 3-8 teaspoonful	6-8 pounds 3-4 pounds 1 $\frac{1}{4}$ - 1 $\frac{1}{2}$ gallons 1-1 $\frac{1}{2}$ pounds	1. Cluster or pink stage. 2. Calyx or petal fall. 3. Two weeks after petals fall.
	Later Codling Moth For Blight at full blossom Blotch	Arsenate of Lead Bordeaux Dritomic Sulphur	3-8 teaspoonful 12-16 teaspoonful 3 teaspoonful	1-1 $\frac{1}{2}$ pounds 8 pounds 1 pound	Eight to ten weeks after petals fall and as often as necessary to keep fruit covered with Arsenate of Lead, and a fungicide.
	Aphids (Plant Lice)	Black Leaf 40	1 teaspoonful	$\frac{1}{2}$ pint	Combine with other spray and apply when Aphids appear.
GRAPE	Chewing Insects Black Rot-Mildew	Arsenate of Lead Bordeaux Mixture	2 teaspoonful 12-16 teaspoonful	1-1 $\frac{1}{2}$ pounds 6-8 pounds	1. After the blossoms fall. 2. Ten days to two weeks later.
	Leaf Hopper	Black Leaf 40	1 teaspoonful	$\frac{1}{2}$ pint	Apply when first nymphs of the Hopper acquire wings
BLACKBERRY DEWBERRY RASPBERRY	Rose-Scab, Cane-Blight, Leaf-Spot and Anthracnose	Dry Lime-Sulphur	9 level tablespoonsful	12 pounds	In spring before growth starts.
	Anthracnose	Dry Lime-Sulphur	2 $\frac{1}{2}$ level tablespoonsful	3 pounds	Just before the bloom.
STRAWBERRY	Leaf-Spot, Flea Beetle and Leaf-Roller	Pestroy	7 level tablespoonsful	7 pounds	1. Before the blossoms open. 2. As soon as the fruit has been picked.

Kills Shot Hole Borers with Homemade Mixture

"Here is my method of controlling shot hole and other borers in my orchard," says John Whiteside of Illinois. "I take a half-gallon of liquid lime-sulphur, a quart of hydrated lime, four ounces of crude carbolic acid, and a pint of flour, first mixing the lime-sulphur and carbolic acid together and then the flour and hydrated lime, after which they are all mixed, stirring well all the time. I paint this material on trees of any age, from the bottom of the trunk up about 18 inches. The first application is made in late April and intermittently thereafter, until the middle of June. I put the mixture on the trees as needed, which can be determined by inspection of the trees."

HOW TO KILL PEACH BORERS: Use pure Paradichlorobenzene on trees when temperature averages 60 degrees F. Remove with hoe all weeds, sticks, etc., from trunk of tree for a space of 6 to 12 inches. Remove any thick masses of gum on the trunk of tree. Place from $\frac{3}{4}$ to 1 $\frac{1}{2}$ ounce of Paradichlorobenzene in a narrow band 2 inches from trunk of tree. Do not place the crystals against the trunk for serious injury might result. Then place 4 to 6 shovels full of dirt over crystals, mounding up toward the trunk. Leave 3 or 4 weeks, then tear down mounds. Should be applied in the fall.

PEACH CURL: A fungus that attacks the trigs, leaves and blossoms of the current season's growth and causes the leaves to puff and fold and makes the edges curl inward. Sprays should be applied some time during the dormant season before growth starts. For each 100 gallons of spray, use 12 $\frac{1}{2}$ gallons of commercial liquid lime-sulphur. If an oil Bordeaux is desired, for each 100 gallons of spray use from 3 to 4 gallons of boiled or cold mix lubricating oil emulsion plus Bordeaux 6-6-100. These sprays will control both peach leaf curl and San Jose scale. Where scale is not present, Bordeaux 6-6-100 or lime-sulphur solution at the rate of 7 gallons in 100 gallons of spray will control peach leaf curl.

HOW TO KEEP RABBITS FROM GNAWING FRUIT TREES: Paint trees with the following mixture using $\frac{1}{4}$ gallon of lime-sulphur, 3 pints of water, $\frac{1}{4}$ pint of common flour, 1 lb. lime. Should be painted about 2 feet high for cotton tails and about 3 feet for Jack Rabbits. Apply in late fall or early winter and then again about February 1st.

ROSE MILDEW: A light sprinkling of sulphur flour will generally check this. If this isn't beneficial, dissolve 1 ounce of potassium sulphuret in 2 gallons of cold water and apply as a fine spray.

BLACK SPOTS ON ROSES: A disease of fungous nature that appears as a black spot on the leaf and later turns yellow and falls. It usually occurs in the later part of the season. If it has appeared in the past on your plants, a spraying in April, before the foliage appears, with Bordeaux Mixture will be necessary as a correction.

BAG WORMS ON EVERGREENS: May be controlled effectively by spraying with arsenate of lead, using 3 lbs. of powder in 100 gallons of water as soon as the larvae have all hatched, that is, some time early in June. In case only a few trees are affected, hand-picking the bags in the fall or early spring is an effective measure.

RED SPIDERS ON EVERGREENS: Wetting trees during the hot part of the day and then immediately dusting them with finely powdered sulphur thoroughly coating the foliage when temperature is above 70 degrees, is most effective. Usually requires more than one application.

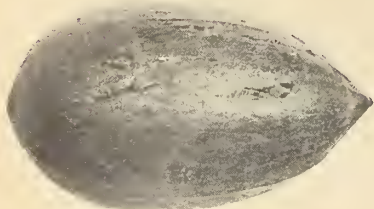
SCHEDULE ON APPLYING SPRAYS: Write to your State Experiment Station for information on when and how to spray your fruit trees. Or ask your local spray dealer and he will be glad to give you this information.

SEEDLINGS: Do not allow your trees to sprout out below the top bud or graft as the trees will be seedlings when allowed to sprout. Break off all sprouts that come out below the top graft or buds so that the trees will be true to name.

**Plant Nut Trees
for Shade**

NUTS

**Pay Big
Profits ...**



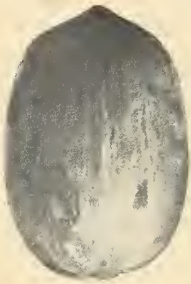
**STUART
PECAN
(Actual
Size)**

PAPER SHELL PECANS

The two varieties named are considered the best of all pecans. They have been recommended by the United States Department of Agriculture as being immune to scab and other diseases to which most varieties are susceptible.

STUART—Very large, oblong, marked with dark color, shell medium thickness, flavor rich and sweet; nuts averaging 40 to 60 per pound. One of the earliest and heaviest bearers. No one will make a mistake in planting largely of this variety as it succeeds on the different soils, especially on the clay soils of the northern portion of the cotton belt.

SUCCESS—Size large, oblong, tapering to the apex. Color reddish brown, purplish markings, shell thin, cracking quality good; partitions thin; kernel large, full, plump, yellow; flavor sweet, quality very good. The tree is a good grower. A fine variety. Success usually is one of the latest to start growth in spring.



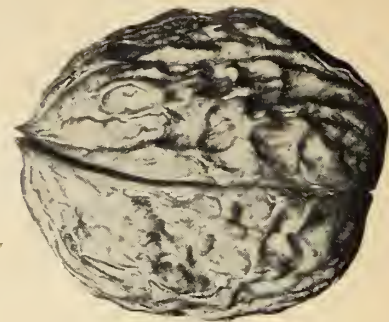
SUCCESS PECAN



**LARGE OLD PECAN TREE
Wonderful Shade.**

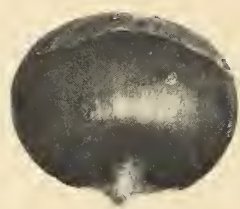
PECANS

2 to 3 ft.		
Each	Per 12	Per 100
\$1.00	\$10.00	\$75.00
3 to 5 ft.		
Each	Per 12	Per 100
\$1.25	\$12.50	\$100.00



ENGLISH WALNUTS

2 to 3 ft.		
Each...	\$1.25	Per 12. \$12.50
3 to 5 ft.		
Each...	\$1.75	Per 12. \$17.50



FILBERTS (or Hazelnuts)

Good quality and bear almost every year and very young.

**2 to 4 feet, 75c each;
\$7.50 per doz.**

ALMONDS

Soft shell, rich and deliciously flavored, rapid growing trees and bear very young.

**2 to 4 feet, 50c each;
\$5.00 per doz.**

SIBERIAN WALNUT

Fast growing tree; a beauty for ornamental tree; perfectly hardy and valuable for its delicious nuts.

2 to 4 ft., 80c each; \$8.00 doz.

BUTTER NUT

(OR WHITE WALNUT)

The nuts are large, long, oily and nutritious. Trees are lofty and spreading with a tropical appearance.

2 to 4 ft., 80c each; \$8.00 doz.

BLACK WALNUTS

Selected from good strain of large nuts, and fine kernels. Trees are fast growing and good for shade trees as well as the nuts.

2 to 4 ft., 75c each; \$7.50 doz.

NOVELTY

ARKANSAS NATIVE PERSIMMONS

A very large seedling variety.

Price: 25c each; \$2.50 dozen

The New BRAINARD BERRY

A new tremendously heavy yielding berry for the Central, Southern and Pacific Coast States. A trailing type, much hardier and better in all other respects than the Himalaya. It is very productive and has large clusters of high quality berries which contain relatively smaller seeds than any other berry of this type. The Department of Agriculture has recommended it as a very worth-while variety and worthy of introduction.

10c each; \$1.00 dozen

OZARK HUCKLEBERRY

This delicious little berry is a native of the Ozark Mountain range, remarkable for its fine flavor, is a choice fruit for jams, pies and fruit cake. Grows luxuriant, very hardy; a prolific bearer, and when given a small amount of attention produces regular annual crops. Will grow on almost any kind of soil, and when once set is there permanently, never having to be renewed.

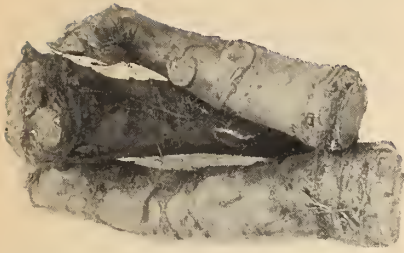
10c each; \$1.00 dozen

IMPROVED DWARF JUNE BERRY

A good substitute for the large or Swamp Huckleberry. The fruit is borne in clusters, and is reddish-purple in color and changing to a bluish black. In flavor it is a mild, rich sub-acid, excellent as a dessert fruit or canned.

Price: 15c each; \$1.50 dozen

It will pay you well to plant these GARDEN FAVORITES



HORSERADISH

It is as easy to grow as a weed, and every good housewife knows its great value in the making of sauces and seasoning. Once used in pickle, it will never be done without. Horseradish sauce is one of the chief appetizers of the golden old-time Southern cuisine. It is also one of the new sauces or condiments that is pronounced by the best authority to be perfectly wholesome. A dozen plants will supply a large family for a lifetime, and it grows and multiplies very fast.

10c each; \$1.00 per dozen

SAGE

HOLT'S MAMMOTH—Plant very robust, perfectly hardy, ornamental. Large leaves, finest flavor; used for seasoning sausage, meat dressing, etc. Also for medical purposes. Should be in every garden.

15c each; per 12, \$1.50



ASPARAGUS

Is of the easiest culture and is one of the first good things you may have from your garden. The plants, when once established, last for years and grow better with age. Care should be taken not to pick asparagus the first season planted. The ground should be well drained and well enriched with barnyard manure; give liberal dressing of manure each year.

30c per dozen; \$1.45 per 100;
\$10.00 per 1,000.

RHUBARB (Pie Plant)

Culture—Good plants are easily grown in any good soil. Plant four feet apart each way, in deep, warm and very rich soil. The more manure the better the stalk. For winter forcing, take up two-year roots in fall, leave out to freeze, then bed close together on cellar bottom or under greenhouse bench in the dark.

GIANT VICTORIA—This is one of the greatest and most valuable vegetables we have ever offered. It is the earliest, tenderest, sweetest and best of all rhubarbs; fit for use in early spring, summer and all fall, while the common or sour sorts are fit for use only a few weeks in the spring. As fast as stalks are pulled new ones take their places. Scarcely has the frost disappeared until your table is supplied with this delicious, refreshing and healthful article of food which is so much desired and appreciated. The stalks are twice the size of the ordinary kind, and of a bright, crimson color, very tender, crisp, and of mild, delightful flavor; the skin is so tender it does not have to be removed when cooking and the sauce has a deep crimson color. Stalks will average 10 to 24 inches long; broad, thick and solid; stalks will weigh on an average one-half pound each and often weigh a full pound. Enormously productive, brings high prices and is a great money maker and in great demand. Try a dozen or two, our word for it, you will never have cause to regret your purchase, and you will never be without some of this variety.

If we are out of any items your order calls for we will substitute with one as good or better, unless you tell us not to substitute.

Strong
Roots

Each
10¢

12 for
\$1.00

\$7.50
per
100



FRUITS



A small tree with purplish or whitish flowers and handsome foliage. The large fruit is edible and improves by cultivation. Hardy as far north as the middle of Nebraska. Worthy of more extensive planting. Very desirable as an ornamental tree.

Price of first-class trees: 50c each; \$5.00 per dozen.

Golden Queen Raspberry

A yellow Raspberry that is desirable both as a novelty and for the big, luscious fruit; is wonderfully productive and one of the finest for jams, jellies, etc., as well as dessert.

12¢ each, 12 for \$1.20
\$6.00 per 100



DEUTZIA (Pride of Rochester)



BUTTERFLY BUSH



MORROWI HONEYSUCKLE

Plant Beautiful Flowering SHRUBS

ALMOND—Double white and double pink. 1½ to 2 feet, 40c each.

ALTHEA (Rose of Sharon)—Double Rose, Double White, Double Purple, Double Red. 2 to 3 feet, 25c each; 3 to 4 feet, 35c each.

ARROWWOOD—2 to 3 feet, 40c each.

BARBERRY THUNBERGI—18 to 24 inches, 20c each; \$1.50 for 10.

BARBERRY, RED LEAF—12 to 18 inches, 35c each; 18 to 24 inches, 50c.

BEAUTY FRUIT—Profuse bloomer, berries till frost, 25c each.

BUTTERFLY BUSH—Flowers resemble Lilac in color and shape—appear in great profusion from mid-summer until frost. Of a delightful fragrance that is attractive to butterflies. Will invariably bloom the first year. 25c each.

CALYCANTHUS (Carolina All Spice)—A unique shrub growing upright to 6 feet, clothing its straight, strong, reddish brown shoots with large glossy leaves, from the axils of which spring odd double, spicily fragrant flowers of chocolate red. 18 to 24 inches, 25c each.

CARAGANA (Siberian Pea Tree)—A large shrub with beautiful leaves of bright green color; flowers yellow in small clusters in late spring, splendid for massing; does well on most all soils and in partly shaded places. 2 to 3 feet, 25c each.

CRAPE MYRTLE (Lagerstroemia)—The most gorgeous of all blooming shrubs for the Southwest. Blooms throughout the entire summer; withstands drouths wonderfully. Crape Myrtle is very effective for hedges, and is at its best when pruned every winter and not allowed to grow in tree form. We can furnish pink, red and white. 2 to 3 feet, 30c each; 3 to 4 feet, 45c each.

CYDONIA, JAPONICA (Flowering Quince)—A popular dooryard shrub, growing from 3 to 6 feet high. The scarlet flowers appear before the leaves, giving a brilliant glow to the bush even from a distance; excellent in shrub groups or as a hedge. 2 to 3 feet, 25c each.

DEUTZIAS

2 to 3 ft., 25c each

3 to 4 ft., 30c each

DEUTZIA (Crenata)—A very hardy shrub with luxuriant foliage and a profusion of double white flowers tinged with rose, produced in late June, on long racemes.

DEUTZIA (Lemoinei)—A spreading grower, 3 to 6 feet, with showier and later white flowers than Gracillis. Endures partial shade.

DEUTZIA (Pride of Rochester)—Upright, fast grower, 6 to 8 feet. Flowers in large panicles are pinkish white in late May.

DEUTZIA (Gracillis)—Called slender or dwarf Deutzia. Dense, upright growth, 2 to 3 feet, with abundant white flowers in April or early May. Very hardy. Useful as edging for walks and for garden borders and in front of shrub masses. Endures partial shade. 1 to 2 feet, 25c each.

DOGWOOD, Siberian (Cornus Alba Siberica)—Valued especially for coral red stems. Some of the older stems should be cut out each spring to encourage new growth that shows color best. It has white flowers in May and white berries in winter. It is fast growing, 6 to 8 feet, and is used for screen effects. Endures partial shade. Other varieties have gray, green and yellow bark or twigs. 2 to 3 feet, 25c.

DOGWOOD (Red Osier)—A spreading shrub; branches in winter are a dull purplish red color; leaves dark green above, whitened beneath; flowers creamy white in dense flat topped clusters, followed by white berries. 2 to 3 feet, 25c.

ELDER (Sambucus)—Although the Elders are attractive in flowers and fruit, they are chiefly grown for their beautiful leaves. They grow well in all soils, and must have vigorous pruning to keep them in shape. 2 to 3 feet, 25c each.

ACUTILOBA (Cut-Leaved Elder)—Great handsome cymes of delicate white, fragrant flowers in June and July, followed by large clusters of

fruit. 2 to 3 feet, 25c; 3 to 4 feet, 40c.

EXOCHORDA GRANDIFLORA (Pearl Bush)—It grows vigorously to a height of 6 to 10 feet; the early buds look like pearls strung on slender threads, May opening them up to long, gleaming sprays of pure white; is one of the showiest of shrubs. 2 to 3 feet, 30c; 3 to 4 feet, 40c.

FORSYTHIA (Golden Bell)—These splendid old shrubs growing 8 to 10 feet tall eventually light up the garden with glinting masses of yellow very early in spring before leaves appear. The upright forms make excellent tall hedges, and are bright hued fillers for massed shrub groups. 2 to 3 feet, 25c each.

INTERMEDIA—The earliest blooming. **Fortunei**—The most upright in growth.

Suspensa—Slender, imply drooping branches strung with bright rosettes of yellow blooms and shiny leaves. These are airily graceful, swaying loosely from trellis top or garden wall; or mingle pleasantly with the trailing growth of Honeysuckle.

HONEYSUCKLES

2 to 3 ft., 25c each

3 to 4 ft., 35c each

WINTER HONEYSUCKLE—The white flowers of this variety often open before the snow has gone in spring, and are deliciously fragrant. The foliage is of a very attractive shade, and remains green until hard freezing weather.

MORROWI HONEYSUCKLE—This is one of the most vigorous of the white flowered kinds, becoming from 6 to 8 feet tall. The foliage is of dark restful green and held until late in the season. In early spring the bush is like a ball of snow, because of the profusion of blooms. During mid-summer the bright red berries contrast strikingly with the foliage and give the bush great attractiveness.

TARTARIAN HONEYSUCKLE—The most extensively used of the older varieties of Bush Honeysuckles. There are a number of varieties, some having flowers of distinctly reddish hue, some pink and some white. All bloom very freely and in mid-summer carry loads of brilliantly colored berries, usually of bright red. We can supply Tartarian Honeysuckles in pink, red or white flowers.



MOCK ORANGE



HYDRANGEA



LILAC

SHRUBS *Make Your Home Worth More*

HYDRANGEA

2 to 3 ft., 50c each

The massiveness of bloom on these valuable shrubs and their long blooming season, assures them a place in every grouping where solid white effects are required.

ARBORESCENS GRANDIFLORA (Hills of Snow)—The flowers are, in large way, similar to the familiar "Snowball" in appearance; conspicuously white and imposing. July to September. By cutting back to the crown each spring, the bushes may be kept round and dense at a normal height of three to five feet. They are excellent for solid low borders or in foundation plantings which will allow for about four feet.

PANICULATA GRANDIFLORA—Fine tall hedges, or if planted in rich soil and severely pruned every spring before the leaf buds open, will get to be very dense, dwarf clumps of compact form, wonderfully attractive when laden with their massive white plumes. Large beds kept at a uniform development, are extremely showy, first snowy white, then pink, then reddish-bronze and green. August till autumn. Planted rather well back in the intervals between other shrubs, the projecting flower wands arching from the ground are extremely conspicuous and effective.

FRENCH HYDRANGEAS 2-Year Plants, 75c each

FRENCH HYDRANGEAS—In gorgeous colors. These most beautiful hydrangeas that grow can be grown outdoors in this section where it gets 20 degrees below zero by mulching them in the late fall for the winter with old straw, leaves or manure. Lay the tops down and cover with this mulching so they will be well protected from the hard freezes. In the spring remove some of this mulching and straighten the tops up and they will bloom nicely for you.

BOUQUET ROSE (Rose and Pink)—Large trusses of well formed flow-

ers, rosy amber, turning to bright pink.

MAURICE HAMAR (The famous Blue Hydrangea)—A beautiful plumbago blue, large flowers and profuse bloomers.

HYPERICUM (St. John's Wart)—An attractive, useful class of hardy shrub now becoming popularized for dwarf and medium location in shrub groups and foundation planting. Their dense, rounded construction of fine twigs and small, usually shiny leaves are well adapted to this purpose; the abundance of fully distributed bloom providing an otherwise difficult display of yellow. 25c each.

KERRIA JAPONICA FL. PL.—A very bright and cheerful dwarf to medium shrub, particularly adapted to sunny foundation plantings; its very numerous branches are graceful, slender, shiny, arching; its leaves serrated; stems and foliage alike a brilliant green. Its abundant double flowers are like half-open rose buds, rich yellow. 1½ to 2 ft., 50c each.

RHODOTYPOS KERRIOIDES — A very graceful shrub of medium height with small light green foliage and white flowers in the spring, followed by small bunches of glistening black berries carried throughout the summer and winter. 1½ to 2 ft., 30c; 2 to 3 ft., 40c each.

KOLKWITZIA

BEAUTY BUSH (K. amabilis)—A recently introduced shrub which bids fair to become one of the very best. Growth upright in the center, with outer branches arching. Bell-shaped flowers, borne in pairs forming a cluster of 25 or so, pink with orange veins. Buds darker pink. Somewhat resembles the Weigela. 2 to 3 ft., 50c each.

LILACS (Syringa)

PURPLE (Common)—It is the well known purple fragrant variety. 2 to 3 ft., 30c each.

WHITE (Common)—Is also fragrant but flowers are white. 2 to 3 ft., 30c each.

PERSIAN LILAC—a graceful shrub with finely cut foliage and delicate lavender blossoms; blooms not so large as the common purple, but it is a graceful shrub. 2 to 3 ft., 40c each.

MOCK ORANGE (Philadelphus)

MOCK ORANGE (Philadelphus avallanche)—Grows to only about one-half the height of the old fashioned "Sweet Syringa." Its slender arching branches make it probably the most graceful of the species. Flowers frequently cover the entire length of the branches and are very sweet scented. Blooms in late spring. 2 to 3 ft., 25c each.

MOCK ORANGE (Philadelphus coronarius)—The old fashioned "Sweet Syringa" with fragrant white flowers. The long branches covered with a profusion of starry white flowers are exceedingly beautiful; blooms in early spring. Suitable for massing with other shrubs or planting as specimens. 2 to 3 ft., 25c each.

NANNY BERRY (Viburnum lentago) —A large shrub or small tree, flowers white in flat topped clusters. 2 to 5 inches broad; fruit oval, bluish black. 2 to 3 ft., 30c each.

Prunus Pissardi (Purple Leaved Plum)—A distinct and handsome little tree, covered with a mass of small, white, single flowers in spring; later with showy pinkish purple leaves that deepen in color to the end of the season. 3 to 4 ft., 50c each.

Triloba (Double Flowered Plum)—A charming shrub of vigorous growth. Very early in spring, before its leaves appear, the whole tree is decked in a fleecy cloud of very double, light pink blossoms. Its effect on a still leafless landscape is very bright. 2 to 3 ft., 50c; 3 to 4 ft., 75c each.

RHAMNUS Catharticus (Buckthorn) —A dense twiggy bush, 6 to 10 feet, with dark foliage relieved by masses of attractive white flowers in June and July. Makes a good prunable hedge. 2 to 3 ft., 40c; 3 to 4 ft., 50c.



SNOWBALL



SNOWBERRY



SPIREA VAN HOUTTEI

SHRUBS



RHUS (Sumac).

RHUS CANADENSIS—Aromatic shrub growing to 3 feet. Good cover plant for dry, rocky banks; conspicuous in early spring by its yellow flowers. Used extensively by the Federal Government in roadside beautification projects. Very hardy. 2 to 3 ft., 25c.

GLABRA (Smooth Sumac).

RHUS TYPHINA (Stag Horn Sumac)—Picturesque and rugged in all stages of development to its small tree maturity of about 30 feet. Its flowers are borne during June and July in dense terminal panicles, followed by impressive red fruits. 2 to 3 ft., 35c; 3 to 4 ft., 45c.

SNOWBALL (Viburnum opulus sterile)—An old time favorite. Rather tall growing; foliage large and coarse; showy flowers in large white "balls" in April. 1 to 2 ft., 30c each; 2 to 3 ft., 50c each.

SNOWBALL TREE (Viburnum tomentosum plicatum)—A strong, vigorous growing shrub with spreading branches and large dark green rough leaves. Flower clusters are white and globose. The fall coloring of the foliage is especially fine. 2 to 3 ft., 50c each; 3 to 4 ft., 75c each.

SPICE WOOD BUSH (Benzoin)—Flowers yellow and blossoms in the spring before the foliage appears. The berries are scarlet in the late summer and early fall. The foliage is attractive and very aromatic; it thrives in moist places. 2 to 3 ft., 25c each.

SPIREA

America's Most Popular Shrub

All the Spireas bloom with a riotous extravagance; style, color and habits of growth differing so markedly that a collection of varieties will insure blooms the entire season and still evade repetition.

ARGUTA—A slender upright shrub. The first Spirea to bloom in the spring, its branches being covered

with a snowy mass of blossoms before the leaves appear. 1 to 2 ft., 35c each.

ANTHONY WATERER—Dwarf, bushy, of spreading type with large corymbs, brilliantly colored rosy crimson. Very free flowering, at its best in late summer. This is one of the very good showy red flowered shrubs sufficiently dwarf to be used in foundation plantings or the low front of shrub groups. 15 to 18 inches, 35c each.

SPIREA, Billardi—Tall, erect shrub with canes terminated by feathery plumes 5 to 6 inches long, of dainty pink color. 2 to 3 ft., 25c each.

BUMALDA—A spreading, low bush with dark leaves brightened by corymbs of pretty light pink flowers in May, and at intervals all summer. 15 to 18 inches, 25c each.

DOUGLASI—Upright in growth to 7 feet with reddish brown branches and narrow, oblong leaves. Bears spikes of beautiful deep rose colored flowers in July. 2 to 3 ft., 25c each.

FROBELLI—Dwarf and similar to A. Waterer, but a trifle taller, with broader leaves. Bright crimson flowers in dense corymbs during July and August. 1½ to 2 ft., 25c each.

VAN HOUTTEI—Grandest of Spireas. One of the best of shrubs; complete foundation of pure white bloom in May and June. The foliage and bush shape is ornamental the year round. 18 to 24 inches (2 year), 20c each; 2 to 3 ft., 25c each; 3 to 5 ft., 40c each.

SNOWBERRY (S. Racemosus)—Inconspicuous rose colored flowers in June and July; followed by large clusters, milk white fruits which remain far into winter. The combination of pink flowers and white berries on the same twig is charming. Foliage is rounded, clean and fresh looking a glaucous green. 2 to 3 ft., 30c each; 3 to 4 ft., 40c each.

INDIAN CURRANT (S. Vulgaris)—Similar to the Snowberry except that its fruits are dull red, and that the smaller berries cluster in thick

ropes along the weighted down stems. The foliage is small, close-set and dark, which, with a uniform spread of its branches compares favorably with the Privets in mass effects. Mail size, 10c each; 2 to 3 ft., 20c each; 3 to 4 ft., 30c each.

TAMARIX

TAMARIX—Tall growing shrubs, 8 to 12 feet high, with fine feathery foliage like that of the Juniper; small, usually pink flowers from April on. Splendid for seaside plantings, or equally good in dry sand.

ODESSANA (Caspian Tamarix)—4 to 6 feet. Exquisitely feathered foliage of silvery green, blooming in July and August with large loose panicles of lavender-pink flowers. Dwarf growing, more bushy and spreading than the others. 2 to 3 ft., 40c each; 3 to 4 ft., 50c each.

WEIGELAS

Coarse, thrifty shrubs for medium and back rows up to 8 feet, their delightful blooming period ranging from May into July. The flowers are stemless bells strung along the arching canes in clustered profusion.

CANDIDA—4 to 6 feet. A choice variety blooming in profusion during June and to some extent all summer. Pure white, 2 to 3 ft., 30c each; 3 to 4 ft., 40c each.

HENDERSONI—One of the strongest growing varieties with large flowers of deep rose. 2 to 3 ft., 30c each.

ROSEA—Most popular of all; tall growing, vigorous, with deep pink flowers in the greatest profusion during June, and more sparsely at intervals thereafter. 2 to 3 ft., 30c each.

WINTER BERRY (Ilex decidua)—In the late fall and early winter this shrub is very showy when the naked branches are heavily burdened with bright red berries, grows on great variety of soils and partially shaded places. 2 to 3 ft., 45c each.

WITCH HAZEL (Hamamelis)—This beautiful shrub will grow under favorable conditions 10 to 12 feet high; ribbon like yellow flowers in the late autumn; large attractive foliage, good for natural planting and shady places. 2 to 3 ft., 40c each.



TALISMAN



AMERICAN BEAUTY



BETTY UPRICHARD

HYBRID TEA ROSES

AMERICAN BEAUTY—Large, globular, crimson buds. A very popular variety which always wins admiration with its beauty and perfume.

BETTY UPRICHARD—Copper-red buds, opening to semi-double, large blooms of delicate salmon-pink, with reverse carmine having coppery sheen. One of the best bloomers.

BRIARCLIFF—Very much like Columbia but a deeper rose-pink. Good growth and free flowering.

COLUMBIA—Beautiful peach-pink, deepening as it opens. Superior shaped buds on very long and nearly thornless stems of good length. Very hardy.

DAME EDITH HELEN—A beautiful shade of clear pink, freely produced on long stems. Pointed blossoms. Grows well.

ETOILE DE HOLLANDE—Very large, well built, brilliant red blooms, fragrant. One of the best new garden roses.

FRANCIS SCOTT KEY—One of the largest reds. Color is a beautiful crimson-red shading to cerise, and has a profusion of petals opening to a higher center. Thrifty grower. Very hardy. Beautiful foliage.

CALEDONIA—The "White American Beauty." Large flowers of waxy paper white in June, yielding their final outburst with the first snow fall.

GRUSS AN TEPLITZ—Brilliant deep red with velvety-crimson sheen. Its hardness, beautiful foliage and great blooming qualities make this one of the finest roses for massing.

J. L. MOCK—Rosy pink, almost silver-white, reverse of petals deep carmine-pink. Blooms of magnificent size on long erect canes.

KAISERIN AUGUSTA VIKTORIA—Queen of white roses. Pure pearly white with splendid large buds and superb, full double blooms. A profuse and continuous bloomer.

LADY HILLINGDON—Deep apricot-yellow to orange. Long, slender pointed buds. A very free blooming variety and strikingly decorative. Thrifty, sturdy growth.

LOS ANGELES—Flowers of pale salmon-pink richly shaded with deep rose and gold.

LUXEMBOURG—Flowers deep orange, with long pointed buds on graceful stems. Beautiful foliage. Strong, thrifty grower.

ROSES

1 YEAR OLD

25c Each

\$2.50 Per Dozen

2 YEAR OLD

40c Each

\$4.00 Per Dozen

MARGARET MCGREDDY—Orange-vermilion blooms with light green healthy foliage. One of the best for home gardens.

MRS. AARON WARD—Fine, fawn-colored buds and open blooms. An excellent buttonhole variety.

MRS. CHAS. BELL (Shell Pink Radiance)—A sport of Radiance and like it except in color; a very, very even shade of soft, clear shell-pink.

MRS. E. P. THOM—The fine, long buds open into perfectly shaped flowers of rich, lemon-yellow.

PAUL NEYRON—One of the largest and hardest roses ever grown. Excellent bloomer. Has long, smooth, thornless stems. A bright ruddy pink.

RADIANCE, PINK—One of the most magnificent garden varieties with large pointed buds which are rosy-carmine on the outside of petals and light, silvery-pink on inside. Very beautiful. Very vigorous.

RADIANCE, RED—Beautiful red sport of Pink Radiance and like it except in color. Stands second among the best twelve roses of its class in America.

PRES. H. HOOVER—A glorious new multi-colored rose, unfolding its broad, thick petals unhurriedly from the beautiful pointed bud. Vivid, cerise-pink, softly flamed with yellow, orange and scarlet; this combination most emphatic on the reverse. The perfume is exquisite; the foliage ornamental.

SUNBURST—Flowers of golden-orange and deep yellow, varying at different stages of development.

TALISMAN—A gorgeous assemblage of colors, exhibiting mostly gold, apricot-yellow, blood-orange, deep pink and old-rose. The bud is long and shapely, developing into medium-size, compactly double flowers. Free bloomer; glossy foliage.

These Prices Cancel All Previous Quotations

Climbing Everblooming ROSES

Two-year-old, field grown, 40c each; \$4.00 per dozen.

AMERICAN BEAUTY—Brilliant carmine flowers of especially fine form and rich perfume, borne in clusters on a moderately strong, fairly healthy plant. Perfectly shaped flowers.

PINK RADIANCE—Same qualities as Pink Radiance bush rose. Vigorous climber.

KAISERIN AUGUSTA VIKTORIA—The best white climbing rose. Pure white, shading at base of petals to a light cream; very fragrant.

RED RADIANCE—A sport of the bush Red Radiance and like it except that it is a vigorous climber.

TALISMAN—Same shades, same qualities as Talisman bush rose, except its climbing habit.

DR. VAN FLEET—Pale pink buds and flowers equal in form and size to the finest hybrid teas. Borne on long individual stems. Undoubtedly the best of the climbers. Supreme in vigor.

PAUL'S SCARLET—Intense scarlet flowers of excellent shape and moderate size, borne in small trusses. Plant of moderate growth, foliage good, blooms very liberally at its season.

POLYANTHUS

Polyanthus are bushy little everblooming Roses, scarcely ever out of flower during the whole season. They are seldom more than 18 inches high, even hardier than Hybrid Teas, and bear small flowers in enormous, many-flowered clusters. Prices: two-year-old field grown, 40c each; \$4.00 per dozen.

THE BEST RED—Medium to small, bright flowers borne in large clusters. Continuous blooming and hardy.

THE BEST PINK—Shining, bright pink blooms of fairly large size. The strong bushy plants, 2 feet high, are almost always in bloom.

THE BEST WHITE—Round, egg-shaped buds and fairly large, round flowers of pure white. Very dwarf and blooms in compact clusters.

NEW ROSES

Two-year-old field grown, 60c each; \$6.00 per dozen.

AUTUMN—Burnt orange buds, opening to medium size; very double flowers of bright yellow, streaked with red. Strongly upright growth and free-flowering habit.

DAVID O. DODD—The long looked for Crimson Bush Rose. The new rose that is causing a sensation everywhere. It produces in marvelous profusion, flowers 5 to 7 inches across with as many as 50 or 60 petals, on a strong bush growing to the height of 3 to 4 feet. The magnificent, deep, dark crimson flowers, flushed deep scarlet, are borne on long, stiff stems. Hardy in all sections of the country. A gorgeous new rose with the most fragrant perfume.

GOLDEN DAWN—Large pointed buds of bright yellow, tinged with red. Flower large, well shaped, deliciously fragrant. Fine foliage.

JULIAN POTIN—A clear yellow rose of vigorous, erect habit, with very shapely flowers of good yellow.

LADY MARGARET STEWART—Immense copper buds opening to bright golden flowers of wonderful form and color.

SOUV. DE CLAUDIUS PERNET—The sensation of the day in yellow roses. Large, sunflower yellow blooms, perfectly formed; very fragrant. Dark, glossy foliage. Vigorous growth.

... OUR SEEDS ARE ALWAYS TOP QUALITY

Beans

Pkt., 10c; 7 Oz., 20c;
14 Oz., 35c; 2½ Lbs., 75c.



IMPROVED GOLDEN WAX—Early bush stringless.
STRINGLESS GREEN POD—Bush, deep green color.
TENDERGREEN—One of the best bush beans grown. Entirely stringless.
BOUNTIFUL—Very early and a heavy bearer. Delicious.
KENTUCKY WONDER—Pole bean with the finest quality.

1,200 TO ONE BEAN—A Gigantic Wonder. Over 200 pods have been grown on a single plant—all well filled, producing over 1,200 beans from one bean. Strong, erect plants, bearing pods well up from the ground. Order now as supply is limited.

Pkt., 10c; 3 Pkts., 25c;
14 Oz., 60c.

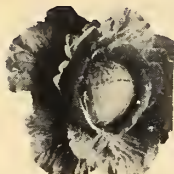
Beets

Pkt., 10c; 1 Oz. 30c;
¼ Lb., \$1.00.

DETROIT DARK RED—Sweet and extra tender.
CRIMSON GLOBE—A home and market variety. Medium late.
CROSBY'S EGYPTIAN—Extra early, crisp and very tender.

Cabbage

Pkt., 10c;
3 Pkts., 25c;
¼ Lb., 90c.



EARLY JERSEY WAKEFIELD—Early. Pointed firm heads.
COPENHAGEN MARKET—Big yielding.
MAMMOTH RED ROCK—The best and largest red cabbage grown.
PREMIUM LATE FLAT DUTCH—Late variety. Large solid head.

Carrots

Pkt., 10c;
3 Pkts., 25c.



SEEDS VERY SCARCE
DANVERS HALF LONG—Very smooth, rich orange color.
OXHEART—Early favorites, short, thick, blocky.
CHANTENAY CORELESS—Sweet, tender, and entirely coreless.



RUSSELL E. DRIVER
Mgr. Seed and Plant Department

Due to the large demand for vegetables being used for our National Defense, I personally suggest that each and every one that can plant a bigger and better garden this year. You cannot only save by growing your own fruit and vegetables but also sell them for a handsome profit. Plant a garden for **DEFENSE, HEALTH and ECONOMY.**

Sweet Corn

Pkt., 10c; 7 Oz., 25c;
14 Oz., 45c; 2½ Lbs., 85c.



WONDER BANTAM—Tender, yellow and full of flavor.
STOWELL'S EVERGREEN—Hardy and highly productive. Sweet, white.
BLACK MEXICAN—One of the best and tenderest sweet corns grown. White when ready for eating.

Cucumbers

Pkt., 10c;
3 Pkts., 25c;
¼ Lb., 70c.



BOSTON PICKLING—Best for pickling. A great producer.
LONG GREEN—Fine for slicing and canning. Tender, crisp.

Garden Huckleberry

Pkt., 10c; 3 Pkts., 25c.

The Garden Huckleberry produces from seed the first year. A new fruit that cannot be excelled for pies and preserves. Very prolific, yielding an immense crop of fruit. It is an annual and must be planted each year from seed. Grows and thrives in all climates and on all kinds of soil. The fruit grows larger than the common Huckleberry or Blueberry. If cooked with apples, lemons, or anything sour, they make the finest jelly. You will be delighted and astonished with this easily grown, wonderful novelty.

Lettuce

Pkt., 10c; 3 Pkts., 25c;
¼ Lb., 60c.



NEW YORK (WONDERFUL)—Immense size heads, crisp, tender leaves.
BLACK SEEDED SIMPSON—A leaf variety with large, light green leaves.
BIG BOSTON—Early head, solid, light Golden heart.

"Food Will Win the War and Write the Peace"

HON. CLAUDE R. WICKARD,
Sec'y of Agriculture

VEGETABLES

Muskmelon

Pkt., 10c; 3 Pkts., 25c;
¼ Lb., 40c.



SUGAR ROCK—The rind is tough and the flesh firm; good shipper.
HONEY DEW, THE FAMOUS MELON—Green flesh, fine for home and market. Juicy and sweet.

HALES BEST—Sweet, sugary, salmon flesh. Early.

Mustard

Pkt., 10c; 3 Pkts., 25c;
¼ Lb., 40c.

SOUTHERN GIANT CURLED—The leaves are large, much crumpled and frilled at the edges. Valued on account of its hardness and good quality.

Okra

Pkt., 10c; 3 Pkts., 25c;
¼ Lb., 40c.

MAMMOTH LONG GREEN—Grows 3 to 4 feet high, producing dark green pods 7 to 8 inches long, ribbed and tapered.

Parsnip

Pkt., 10c; 3 Pkts., 25c;
¼ Lb., 60c.

HOLLOW CROWN—The roots reach a length of 8 to 10 inches. Flesh white, tender and sweet.

Peas

Pkt., 10c; 7 Oz., 20c;
14 Oz., 35c; 2½ Lbs., 75c.



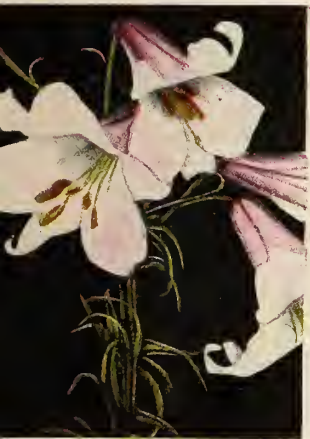
EARLY ALASKA—A smooth early variety and excellent for canning.
AMERICAN WONDER—Early and one of the best.
THOMAS LAXTON—Mid-season, medium growing, fine flavor.



PEONY



PEONY



REGAL LILIES



CANNAS



BEARDED IRIS



GLADIOLA



GLADIOLA

Special Bargain Offers . . .

- 25 Cannas—Mixed varieties **\$1.00**
- 50 Rainbow Mixture Gladiolus.. **\$1.00**
- 50 Rare Iris Collection..... **\$1.00**
- 4 Regal Lilies **\$1.00**
- 4 Peonies—Mixed Colors **\$1.00**

All Specials, Prepaid.



**Victory SEED
COLLECTION No. 1**

- 1 Pkt. Early Alaska Peas
- 1 Pkt. Chantenay Carrots
- 1 Pkt. Golden Bantam Sweet Corn
- 1 Pkt. Scarlet Radish
- 1 Pkt. California Wonder Peppers
- 1 Pkt. Detroit Dark Red Beets
- 1 Pkt. Improved Long Green Cucumbers
- 1 Pkt. Improved Rutgers Tomatoes

ALL FOR **50c** Post
ONLY Paid



Plant a War Garden this Spring! Keep the Food Production Line Going!

VEGETABLES

Peppers



Pkt., 10c;
3 Pkts., 25c.
CALIFORNIA WONDER—Large, sweet, crisp and tender.
LONG RED CAYENNE—Bright red color, strong and pungent.

Parsley

Pkt., 10c; 3 Pkts., 25c.
MOSS CURLED—A plant used in flavoring soups and for garnishing.

Pumpkins

Pkt., 10c;
3 Pkts., 25c;
1/4 Lb., 50c.
MAMMOTH KING—The largest of all.
SWEET POTATO—The best for making pies and custards.



Radishes



Pkt., 10c;
3 Pkts., 25c;
1/4 Lb., 45c.
WHITE ICICLE—Extra early, mild, tender.
EARLY SCARLET WHITE TIP—Tender and crisp, sweet flavor.



Squash

Pkt., 10c; 3 Pkts., 25c;
1/4 Lb., 65c.



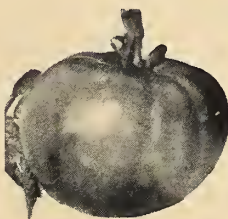
WHITE BUSH SCALLOP—A very early summer variety. Fruit flattened and scalloped with smooth white skin.
YELLOW STRAIGHT-NECK—The most used yellow summer squash.

Rhubarb

Pkt., 10c; 3 Pkts., 25c.
VICTORIA—An excellent and hardy sort for home garden.

Tomatoes

Pkt., 10c; 3 Pkts., 25c;
1 Oz., 40c.



EARLIANA—Earliest, smooth skin, uniform.
MARGLOBE—Globular, almost coreless.
BREAK-O-DAY—Early, wilt resistant. Large fleshy, good quality.

Colossal Tomato

Pkt., 20c; 3 Pkts., 50c.

This is a large tomato, being even larger than the famous Ponderosa. Many planters in different parts of the country have grown Colossal Tomatoes weighing over 3 lbs., and some more than 4 lbs. Not only does the Colossal produce giant fruits but it produces them in abundance. One planter in Illinois raised over a ton of Tomatoes from 186 plants. The very thick, meaty flesh, few seeds and mild flavor combine to give the Colossal a quality on a par with its immense size. Unsurpassed for slicing or canning.

We Pay the Postage on All Seed Orders...

June 18, 1942.
Nursery Co.:
I received the Seed and Potato Plants the next day after I sent the letter. They were nice Plants.
Thanking you from
MR. ELGIE EALY,
West Finley, Pa., R F D 1

Tulla, Texas,
March 24, 1942.
Benton Co. Nursery Co.,
Rogers, Arkansas.
Dear Sirs:
Please find \$1.00 enclosed for garden seed. We find your seed and plants do well for us.
Sincerely yours,
MRS. EMILY S. SMITH.

Turnips

Pkt., 10c; Oz., 15c;
1/4 Lb., 40c; Lb., 45c.



PURPLE TOP GLOBE—Our selected strain is superb in its uniformity of size, shape and maturity. Most popular turnip in existence. Pkt., 5c. Oz., 10c. 1/4 Lb., 20c. Lb., 45c.

Watermelons

Pkt., 10c; 3 Pkts., 25c;
1/4 Lb., 50c.

TOM WATSON—An old favorite, flesh is deep bright red color.
CALIFORNIA HONEY—A small type melon just the right size to fit into your ice box.
KLECKLEY SWEET—Early and fine sweet flavor.

Mammoth Prize Watermelon

Pkt., 10c; 3 Pkts., 25c;
1/4 Lb., \$1.00.



Mammoth Prize is the largest Watermelon grown. Many grow to from 100 to 150 lbs. On one vine, 5 melons were grown that weighed 152, 151, 149 1/2, 148 3/4 and 147 lbs., the five weighing a total of 748 lbs. The seed we offer is extra select, and should produce fine, sweet, juicy melons of excellent quality and enormous size.

These Prices Cancel All Previous Quotations



AMERICAN ELM



CHINESE ELM



SILVER-LEAVED MAPLE

ORNAMENTAL and

Imagine if you can what a bleak and barren place this country of ours would be without shade and ornamental trees. Have you ever noticed that the homes which look the most attractive to you invariably are those with a few well placed ornamental trees around them? There is a growing appreciation of trees. More people are learning to know and love them every day. It is well recognized that shade trees around the farm or city home not only add to its beauty and comfort, but greatly increase the value of the property. Truly, "It's not a home until it's planted." We do not advise planting big, overgrown ornamental trees. They do not transplant as successfully as the sizes offered herein.

AILANTHUS (or Tree of Heaven)—The large pinnate leaves of this tree give it a tropical appearance, a very rapid grower, withstanding smoke and dust better than most any other kind of tree. 4 to 6 ft., 50c; 6 to 8 ft., 75c.

ASH, White (Fraxinus Americana)—One of the best native trees; leaves dark green and effective throughout our long summers. Native throughout America. 5 to 6 ft., 75c; 6 to 8 ft., \$1.00; 8 to 10 ft., \$1.25.

BIRCH, Red (Betula Rubra)—This tree is typical Birch. Its bark is a dark hue and its leaves are purple in color; its branches follow the general Birch habit of drooping gracefully. This tree likes wet soils and along streams. 4 to 6 ft., \$1.00; 6 to 8 ft., \$1.25.

BLACK GUM—A native that adapts itself to all kinds of soils and one of the most beautiful trees that grow in the Ozark Mountains. It is a close, compact growing tree, from 20 to 40 feet in height; the foliage is thick and dark green, making a very dense shade early in the fall. This foliage turns blood red, making it a thing of beauty for weeks before the leaves fall off. 4 to 6 ft., \$1.00; 6 to 8 ft., \$1.50.

Collinston, La, Nov. 20, 1939.
Dear Sir:
I received the trees in good shape. I am well pleased with the flowers and trees. Thank you for your kindness.
C. M. HUTCHINSON.

BOX ELDER (Ace Negundo)—A large rapid growing native tree of spreading habit, belonging to the Maple family. 4 to 6 ft., 50c; 6 to 8 ft., 75c; 8 to 10 ft., \$1.00.

CATALPA BUNGEI—A remarkable species forming a dense, round umbrella-like head; makes a beautiful lawn tree when grafted or budded on a high stem. 4 to 5 ft., \$1.00; 5 to 6 ft., \$1.50; 6 to 7 ft., \$1.75.

CATALPA SPECIOSA—Broad, deep green foliage, with large, fragrant trumpet flowers in clusters in the spring. The Catalpa is a native of most parts of the South and is valued for its durable timber and for ornamental purposes. 4 to 6 ft., 30c; 6 to 8 ft., 50c; 8 to 10 ft., 75c.

COTTONWOOD (Populus Deltoides Canadensis)—One of the best of the Poplar family. Large and spreading and used where the effects of the Poplars are desired. Does exceptionally well in the plains country. 4 to 6 ft., 30c; 6 to 8 ft., 50c; 8 to 10 ft., 75c.

CHESTNUT, HORSE—A large tree of regular outline, 60 to 80 feet tall, completely covered in May with great upright spikes of white flowers. Satisfactory either as a street or lawn tree, particularly desirable where dense shade is required. 3 to 4 ft., \$1.00; 4 to 5 ft., \$1.25.

CRAB APPLE, Bechtel's Double Flowering—A handsome little tree seldom over 20 feet in height. One of the finest for lawn decoration. Produces in profusion double, young, and is very fragrant. 2 to 3 ft., 75c; 3 to 4 ft., \$1.00.

DOGWOOD, RED FLOWERING (Cornus Florida Rubra)—Similar to White Flowering Dogwood except that the flowers vary from pink to light red. Grows 10 to 20 feet high. 2 to 3 ft., \$2.00.

DOGWOOD, WHITE FLOWERING (Cornus Florida)—A slow growing dwarf tree with abundant, large, white flowers appearing very early in the spring before the grayish-green leaves, and followed by attractive red berries. Leaves turn to deep red in autumn. Grows 10 to 20 feet high. 2 to 4 ft., 50c; 4 to 6 ft., 75c.

ELM, AMERICAN—In our opinion the handsomest and most dignified of all the native trees. Probably more largely planted and better known than any other. A tall growing stately tree reaching 60 feet, with a wide arching top and vase-like form. Extensively used for street planting where its wide-spreading branches form perfect Gothic arches over the street. 5 to 6 ft., 50c; 6 to 8 ft., 75c; 8 to 10 ft., \$1.00.

ELM, CHINESE—A native of China; a noble, rapid growing tree, forming a very dense head with smaller, darker leaves than the American Elm. Leaves stay on the tree much longer in the autumn; the branches project from the trunk almost at right angles. A real beautiful shade tree for lawn and street plantings. 4 to 6 ft., 50c; 6 to 8 ft., 75c; 8 to 10 ft., \$1.00.

JUDAS TREE (Cercis Canadensis) (Red bud)—A small growing tree of irregular form, with heart-shaped leaves. It is covered with delicate pink blossoms early in spring before the leaves appear. A charming association among the tender greens and bronzes of young foliage. 3 to 4 ft., 75c; \$6.75 per 10; 4 to 5 ft., 90c; \$8.50 per 10.

LINDEN, AMERICANA (Basswood)—A tall growing, stately tree, growing 60 to 80 feet tall, with large, shining green leaves and light yellow fragrant flowers in July. A splendid tree for lawn and street planting. Valuable for its beautiful white wood. 5 to 6 ft., \$1.50; 6 to 8 ft., \$2.00; 8 to 10 ft., \$2.50.

LOCUST, Black (Robinia Pseudacacia)—Popular for both shade and avenue tree, as well as for windbreaks and timber belts; white sweet-scented flowers in spring. 4 to 6 ft., 30c; 6 to 8 ft., 50c; 8 to 10 ft., 75c.

MAPLE, SUGAR (Rock Maple)—One of the most useful of all maples, excellent for street and lawn planting and used extensively in the production of maple sugar. A tree of magnificent proportions, often 80 feet in height, straight, spreading and symmetrical in shape. Long lived. It roots deeply, allowing grass to grow close about its trunk. Dark green leaves turning to scarlet and gold in autumn. 5 to 6 ft., \$1.00; 6 to 8 ft., \$1.50; 8 to 10 ft., \$2.00.

MAPLE, SILVER LEAVED (Soft Maple)—Leaves white underneath; of rapid growth; very ornamental and one of the best trees we have. 4 to 6 ft., 25c; 6 to 8 ft., 50c; 8 to 10 ft., \$1.00.

New Hartford, Mo.
June 19, 1939.
Dear Sir:
I want to recommend your nursery stock to all my friends. I ordered eight Concord grape vines and two Niagara vives in 1936. They bore a bushel or more fruit the first year after planting. They were received in very good condition.
Last year we had a heavy sleet in April, but they came through and bore a very good crop. The two Niagaras were bitten off by the cows, but they put out and are doing fine now.
I hope to order more from you in the future.
WILFRED WILHOIT.



RUSSIAN OLIVE



LOMBARDY POPLAR



WEeping WILLOW

SHADE TREES . . .

Plant Shade Trees for Living Beauty...

MULBERRY, RUSSIAN—A very hardy low growing tree. 20 to 30 feet high with beautifully cut foliage and an abundance of fruit which attracts the birds. Not one of the edible varieties. 4 to 5 ft., 50c each.

OAK, RED—A massive tree with light grey bark and green, round lobed foliage that turns a beautiful red in the autumn. Excellent for parks and large lawns. Grows 60 feet and upwards. 5 to 6 ft., \$2.00 each.

OLIVE, RUSSIAN—Becomes a wide spreading tree of moderate height, conspicuous because of its silvery foliage; prized for planting in groups with other trees, the contrasts in foliage makes a beautiful effect. It also makes a beautiful specimen tree. 4 to 5 ft., 50c each; 5 to 6 ft., \$1.00 each.

PEACH, RED (Double Flowering)—A beautiful small tree rarely over 20 feet tall; at its blooming time in May every twig and branch bright with beautifully formed flowers, rendering the tree showy and attractive at a distance. 3 to 4 ft., 50c each; 4 to 5 ft., 60c each.

PEACH, Red Leaf—A very ornamental tree for its foliage. The leaves are blood red from early in the spring until frost. 2 to 3 ft., 25c each; 3 to 4 ft., 40c each; 4 to 6 ft., 60c each.

PERSIMMON, American—This is the puckery persimmon, an inch or more in diameter, orange yellow, with a bright cheek when touched by frost. The tree is very ornamental, with a round topped head and handsome shining foliage. 4 to 6 ft., 75c each.

PLANE TREE, ORIENTAL—A hardy rapid growing shade tree that does well in smoky cities, near the seashore, or in unfavorable situations where other varieties would not flourish. Excellent for street planting. Beautiful, dense foliage. Grows 60 feet and upwards. 6 to 8 ft., \$1.50 each; 10 for \$12.50.

POPLAR, CAROLINA—A very rapid growing tree, giving shade in a very short time. Very easy to transplant and does well on any kind of soil. Desirable for roadside planting, in parks and along rivers and streams for the protection of the banks. Used extensively for screen to hide unattractive buildings. Attains a height of 60 feet at maturity. Bright, heart shaped, glossy green leaves, silvery white underneath. 6 to 8 ft., 50c each; 10 for \$4.00; 100 for \$30.00. 8 to 10 ft., 75c each; 10 for \$7.00; 100 for \$55.00.

MAPLE, NORWAY (Hard Maple)—Is without a doubt one of the most desirable shade trees for street and lawn planting. Of fairly rapid growth, reaching a height of 60 feet at maturity. Sturdy, compact and vigorous, forming a round head of stout branches and broad, deep green leaves. 6 to 8 ft., \$2.75 each; 8 to 10 ft., \$3.50 each.

POPLAR, LOMBARDY—A tall, narrow tapering tree, 60 feet high at maturity, a striking feature in any landscape. Fine for planting in groups, along driveways, or to make boundary lines. Sometimes used for tall screen hedges. 5 to 6 ft., 50c each; 10 for \$4.50; 6 to 8 ft., 75c each; 10 for \$7.00; 8 to 10 ft., \$1.00 each; 10 for \$9.00.

PRUNUS Pissardi (Purple Leaved Plum)—A distinct and handsome little tree, covered with a mass of small white single flowers in spring; later with showy pinkish purple leaves that deepen in color to the end of the season. 3 to 4 ft., 50c each; 4 to 5 ft., 75c each.

SYCAMORE, AMERICAN—A well known tree, very common throughout the United States; leaves heart shaped at base; the short lobes, sharp pointed branches are wide spreading. 4 to 6 ft., 50c each; 6 to 8 ft., \$1.00; 8 to 10 ft., \$1.50 each.

SWEET GUM (Liquidambre styraciflua)—A native tree that is perfectly hardy. The glossy foliage in summer, the brilliant color in the fall and the unusual appearance of the

young branches with corky bark in the winter are considerations that make it especially valuable. 4 to 6 ft. trees, \$1.50 each; 6 to 8 ft., \$2.00 each.

TULIP TREE (Whitewood)—One of the grandest of our native trees, of tall pyramidal habit, with broad, glossy, fiddle shaped leaves and beautiful tulip-like flowers; allied to the Magnolia. Leaf color is clean, rather bluish-green shades which in fall turns brightest yellow. Flowers are 1½ to 2 inches long, light greenish yellow marked at inside base with orange; appearing in May or June. 4 to 6 ft., \$1.25 each; 6 to 8 ft., \$1.50 each.

UMBRELLA CHINA TREE (or Texas Umbrella)—A sub-variety of the China tree. It assumes a dense, spreading head, resembling a gigantic umbrella, and is of unique appearance. 4 to 5 ft., \$1.00 each; 5 to 7 ft., \$1.50 each; 7 to 9 ft., \$2.00 each.

WALNUT, BLACK—Valuable for nuts and timber. It is hardy and succeeds best on a rich, deep, moist soil. Too well known for long description. 4 to 6 ft., 50c each; 6 to 8 ft., \$1.00 each; 8 to 10 ft., \$1.50 each.

WILLOW, GOLDEN—A very showy yellow-barked tree reaching a height of 60 feet at maturity. A handsome tree at all seasons, but particularly conspicuous in winter and early spring before the leaves appear. 6 to 7 ft., 50c each; 10 for \$4.50; 100 for \$40.00.

Milledgeville, Ga.
Feb. 5, 1941.

Gentlemen:
Received our order of trees and roses on the 1st. We are highly pleased with appearance of the shipment. We let a relative have our catalogue. He was very much interested when he saw our trees and the price. Hope he gives you an order. Will let you hear from me this fall if Providence permits.

Sincerely yours,
J. W. GILMORE.

... this Spring PLANT PERENNIALS Enjoy them in the Years to Come



TIGER LILY

BLEEDING HEARTS—35c each; \$3.50 per dozen.

CHRYSANTHEMUMS—A good assortment of colors of the very best outdoor, hardy kinds. 10c each; \$1.00 per dozen.

CHRYSANTHEMUM KOREAN—2 to 2½ feet. Single flowers in lovely pastel colors, appearing in the fall. 20c each.

PINK DOTY—One of the earliest large blooming. Blossoms clear, bright pink. Very choice. Quite hardy. 20c each.

WHITE DOTY—White blossoms, creamy at center, clustered on tall stems. 20c each.

COLUMBINES—Can furnish many shades of the very best varieties. 20c each; \$2.00 per dozen.

DAISY SHASTA—1½ to 2 ft. White. Spring, through summer. 15c each; \$1.50 per dozen.

DELPHINIUMS—The best of all blue flowers and hardy. 20c each; \$2.00 per dozen.

FERNS—This is a hardy fern that will live and grow to perfection outdoors in climates where it gets 20 degrees below zero, and very fine ferns and of good size sent to you. 25c each; \$2.50 per dozen.

GOLDEN GLOW—15c each; \$1.50 per doz.

HOLLYHOCKS—Furnish a wealth of color throughout the summer; from 3 to 7 ft. in height. Colors pink, red and white, in single blossoms. Double white, double yellow and double red mixed. 3 for 35c.

HYBISCUS—Red, white and pink. 20c each.

PHLOX—Mixed varieties of good sorts. 10c each; \$1.00 per dozen; \$7.00 per 100.

PHLOX—Named varieties of the best sorts. 25c each; \$2.50 per dozen; \$20 per 100.

PHLOX—Scotch. Variety of colors. B. Comte. Brilliant crimson. Dawn. Blush pink. R. P. Struthers. Salmon pink. Stella. White.

SWEET PEAS—2 varieties. White and pink. 15c each; \$1.00 per dozen.

SWEET WILLIAMS—10c each; \$1.00 per dozen.

YUCCA (Adam's Needle)—25c each; \$2.00 per dozen.

GLADIOLUS Mixed Varieties

3c each; 30c per doz.,
\$2.50 per 100.

Named Varieties

7½c each; 75c per doz.

ALBATROS—Large pure white with 6-8 blooms open on a tall, vigorous plant. Blossoms face up in lily fashion.

ANNA EBERIUS—Fuchsia color with very tall, gracious spikes having from 10 to 12 florets open at a time. The very best in this color.

BAGDAD—Smoky old rose, deeper to edge of petals and lighter in throat. Lip petals have a faint creamy blotch, marked with pencilling of begonia-rose. Five to seven immense blooms open at one time.

BERTY SNOW—A sensational exhibition variety, beautiful lavender-pink bloom. Very large, open blossoms.



DAHLIA

CHAS. DICKENS—Violet-purple with very tall, gracious spikes having from 10-12 florets open at a time. One of the best of this color.

DR. BENNET—Large florets of a deep glistening red, almost crimson. Blooms on a heavy spike and is outstanding for the number of flowers open at one time.

DR. MOODY—Flowers are large, clear lavender-pink, 6 to 8 florets open at one time. One of the best lavender glads.

FLAMING SWORD—Fine early red. One of the first reds to bloom. Beautiful scarlet florets borne on strong, tall spikes.

GIANT NYMPH—A giant in growth with florets of light rose-pink and creamy yellow throat. Distinctive for the unusually large blooms.

MARMORA—A sensational exhibition variety. Blooms are of immense size, a pleasing shade of lavender and carried on a fine straight stem.

1910 ROSE—The finest, clearest deep rose shade, large florets with nearly the entire spike open at one time.

PELEGRINA—A deep blue-violet Gladiolus that is particularly appealing for its color. The blackish blue buds showing color to the tip of the spike add much to the attractiveness of this desirable variety.

PICARDY—The finest Gladiolus in its color class. Of soft shrimp-pink without flecking. Seven to ten florets open at a time with blooms up to six inches or more across. Spike is strong, but at the same time very refined. An ideal "Glad."

VAGABOND PRINCE—Iridescent garnet brown shading lighter in the throat and with a small vivid flame scarlet blotch on the lip. Eight to ten or more well placed, medium large blooms open at a time. An unique variety as well as beautiful and showy.

GARDEN BLOOMING CANNAS

CANNAS—Mixed varieties. Of the very best kinds and colors. 4c each; 40c per dozen; \$3.00 per 100.

CANNAS—Named varieties. 7½c each; 75c per dozen; \$5.00 per 100.

City of Portland. 2½ feet. Green foliage and the most beautiful pinks.

Eureka. 2½ feet. Green foliage and the best white Canna grown.

King Humbert. 5 feet. Finest bedding variety with bronze foliage, orange scarlet.

President. 6 feet. Green foliage, beautiful red flowers that bloom until frost.

Wyoming Yellow. 6 feet. Bronze foliage, excellent for bedding, deep orange yellow.

Yellow King Humbert. 5 feet. Green foliage with golden yellow flowers, a profuse bloomer.

Gaiety. 4 feet. Scarlet orange, mottled with carmine and edged in clear yellow.

Robusta. 8 feet. Red or bronze foliage, small red blooms, grows to enormous size, the very best for hedges or screen plantings. 5c each; 50c per dozen; \$3.50 per 100.

DAHLIAS

Mixed varieties of many colors and good sorts. 5c each; 50c per dozen.

DAHLIAS—In this lot we can supply the color wanted, of white, yellow, pink and dark red, of real good kinds at 10c each; \$1.00 per dozen; \$7.50 per 100.

DAHLIAS
25c Each; \$2.50 per dozen

Jersey Beauty. Flowers are perfect Esoline Pink. Stems and plants are very hardy and strong and are immune from defects.

Jane Cowl. Flowers are glistening bronzy buff and salmon shade. Dark green leatherlike foliage, stems are long and very sturdy.

Mrs. Ida De Ver Warner. Large flowers of clear lilac-rose on strong stems, an easy grower and plants tall.

Judge Marean. Flowers are beautiful combination of salmon red, orange and apricot; very prolific, stiff wiry stems.

The Commodore. Large clear canary yellow. Prolific bloomer. Does well in any soil.

Jersey Beacon. Bright scarlet with petals twisted to show reverse of lighter shades, two-tone effect, large and massive.

Sagamore. Blooms freely, finest amber-gold. Bush is sturdy, fine stems, excellent commercial variety.

Pride of Stratford. A big flaming ball of color with beautiful hues and streaks of orange, red and yellow.

Le Toreador. Large flowers of brilliant red. Good form, perfect stems. Probably the best red cut flower on the market.

IRIS—This lot a mixture of real good kinds and of fine colors, 5c each; 50c per dozen. For 15c each, \$1.50 per dozen, we offer late high grade named varieties: Queen of May (lilac pink); Mad. Chereau (white); Caprice (rosy red); Juanita (deep blue); Kochii (deep purple); Honorabilis (yellow with brown); Archeveques (purple); Rhein Nixi (white and plum).

NARCISSUS—5c each; 50c per dozen; \$3.00 per 100.

PEONIES—Mixed varieties. All are good kinds. 25c each; \$2.50 per dozen.

PEONIES—Named varieties. 35c each; \$3.50 per dozen.

The varieties named below are very large, double and fragrant.

Fragrance. Beautiful shade of red.

Festiva Maxima. Very large white.

San Foin. Fine shade of pink, very large.

LILIES

DAY LILY—Blooming size. 10c each; \$1.00 per dozen.

REGAL LILY—Blooming size. 45c each; \$4.00 per dozen.

MADONNA LILY—Blooming size. 25c each; \$2.50 per dozen.

LILY OF THE VALLEY—Blooming size. 5c each; 50c per dozen.

LEMON LILY—Blooming size. 15c each; \$1.50 per dozen.

TIGER LILY—Blooming size. 25c each; \$2.50 per dozen.

RED RUSSIAN LILY—Reddish orange with 6 to 30 flowers in clusters on one stem. Just a mass of blooms in early June. Plant 8 in. deep. 25c each; \$2.50 per dozen.

PHILIPPINE LILY—A new beautiful variety. The slender stem is covered with the same grassy foliage as the Regal Lily. Flowers are long, white trumpet-like shape with a beautiful pale emerald green throat. They commence blooming in August and flower until stopped by frost. Very easily grown. 45c each; \$4.00 per dozen.

FRAGRANT TUBEROSES

TUBEROSE—The very fragrant flower. 5c each; 50c per dozen.

CALADIUM (Elephant Ear)—The large type, leaves grow to be 6 feet in diameter. Medium size bulbs. 15c each; \$1.50 per dozen. Large size bulbs, 25c each; \$2.50 per dozen.

Surround Your Home with these . . . Beautiful Hedges



AMUR PRIVET HEDGE

CHOICE HEDGE PLANTS

	Each	10	100
1 to 2 Feet.....	10c	\$.80	\$ 7.50
2 to 3 Feet.....	12c	1.00	8.00
3 to 4 Feet.....	15c	1.25	10.00

Amur Privet (North). Hardy North type. Leaves dark green.
Amur Privet (South). Fine leaf type. Evergreen in the South.
Calif. Privet. Of upright, rapid growth. Foliage light green.



CLEMATIS VINE

CLIMBING VINES

BOSTON IVY—A hardy climber that clings firmly to the smoothest surface. Color is deep green in summer, changing to crimson in autumn. 2 year, 40c each.

AMERICAN IVY—Deeply cut leaves which turn to a beautiful crimson in the fall. 2 year, 40c each.

DUTCHMAN'S PIPE—Pipe-shaped flowers with immense heart-shaped leaves. 50c each.

TRUMPET FLOWER—A robust woody vine with numerous roots along stems. Orange scarlet, trumpet-shaped flowers. Leaves are light green. 2 year, 40c each.

BITTERSWEET—Glossy foliage. Large clusters of beautiful, orange crimson fruits retained all winter. 2 year, 50c each.

CLEMATIS—Grand for pillars and trellises, pegged down for bedding and for

running over rock work, old trees and stumps. They delight in rich soil and sun.

LARGE FLOWERED VARIETIES
Henryi. Creamy white.
Jackmani. Velvety violet-purple.
Mad. E. Andre. A distinct crimson red.
Ramona. Deep sky blue.
 2 year, 75c each.

SMALL FLOWERED VARIETIES
PANICULATA (Sweet Scented Clematis)—The flowers are of medium size, fragrant, pure white, borne in immense sheets in September. 2 year, 25c each.
SCARLET TRUMPET—Trumpet shaped flowers of bright scarlet. 50c each.
WISTERIA—Magnifica. Dense cropping clusters of pea shaped flowers crowning the top. Lavender purple. 50c each.

WATER PLANTS

ROSE AREY—Starry cerise pink, intensely fragrant flowers of exceptional size, profuse bloomer. One of the most popular lilies. \$1.50.

CHROMATELLA—Bright, sulphur yellow with broad curving petals. Blooms in great profusion through the entire season. The leaves are handsomely spotted with maroon. Extremely

hardy, very vigorous and the most satisfactory of the yellow lilies. 50c.

PAUL HARRIOT—On the opening day, the petals are clear yellow suffused with rose, becoming orange pink on the second day and deepening to red on the successive days. We consider it one of the best all around varieties, blooming profusely and being a sturdy, hardy plant. \$1.00.

GLADSTONE—Large, dazzling, white flowers with broad, waxy petals and sulphur yellow heart. Its pure, snowy white makes it a perfect contrast with the colored varieties, morning as well as early in the season. Very hardy and prolific. \$1.00.

WATER HYACINTHS

The plants float in water, but like the roots in a cool place, particularly among the lily pads where they do not drift about. Delicate spikes of lavender flowers. 10c each.

ARROWHEAD—Spikes of butterfly-like blossoms and arrow shaped leaves. Thrives well in shallow water; very thrifty. 10c each.

WATER POPPY—Each plant throws out many floating runners bearing large

blossoms all summer. Yellow flowers very similar to the California Poppy. 10c each.

WATER IRIS—These plants are among the most beautiful of the garden flowers, extremely easy to grow, thriving in shallow water. Pale blue blossoms in abundance. 10c each.

SIBERIAN IRIS—Excellent margin plant, rich, violet-blue. 10c each.

AMERICAN LOTUS—This beautiful Lotus has large, umbrella-like leaves, borne on tall stems. The flower buds rise above them in a waxy white with large yellow centers; very showy. 50c each.

PARROT FEATHER—Long trailing stems soon grow over the edges. 10c each.

CAT TAIL—An excellent boggy plant, foliage of straight spike form. Large, heavy round spikes borne in July. 10c each.

ROCK GARDEN PLANTS

NAME	COLOR
Achillea—Millefolium	
Roseum.....	Dark Pink
Alyssum—Saxatile	Yellow
Anchusa—Droopmore	Gentian Blue
Arabis—Alpina	White
Artemesia—Silver King	Silver Foliage
Asters (Dwarf)	Lavender
Campanula (Bell Flower)	Mixed Colors
Carnations—Hardy	Blood Red
Cerastium Tomentosum	White
Dianthus—Pinks	Various

Price, 15c each; 12 for \$1.50

NAME	COLOR
Gaillardia—Blanket Flower	Orange-red
Gypsophila	White
Liatris Spicata	Blue Purple
Lily-of-the-Valley	White
Linum Perenne (Blue Flax)	
Physostegia—False Dragonhead	Pink
Platycodon—Balloon Flower	Blue, White

NAME	COLOR
L'yrethrum (Painted Daisy)	Red
Ranunculus	Yellow
Santolina—Lavender Cotton	Silvery Foliage
Sedums—in variety	Various
Sempervivum—in variety	Various
Statice, Latifolia	Purplish-blue
Veronica	Blue
Violets Russian (Perennial)	Purple



IRISH JUNIPER



PFITZER'S JUNIPER



AUSTRIAN PINE

ARBORVITAE

AMERICAN ARBORVITAE—A splendid native that grows well anywhere and thrives over a wide range of climate. The habit is erect, and pyramidal, the foliage soft and light. Included in groups and all evergreen plantings. They are unequalled as tall hedges to form screens for unsightly objects or for shelter belts or as a blind about clothes yards, etc. They grow quickly and if planted closely in hedges give the desired effects promptly. They may be kept at any height and made more dense and bushy by trimming, which they endure readily. 1 to 2 ft., 75c each; 2 to 3 ft., \$1.25 each; 3 to 4 ft., \$2.00 each; 4 to 5 ft., \$3.00 each.

AMERICAN PYRAMIDAL ARBORVITAE—This exceedingly beautiful Arborvitae is the most compact and erect of the entire species, being in form almost a counterpart of the Irish Juniper. Foliage a deep green, retaining color remarkably well through the entire season, and perfectly hardy. 1 to 2 ft., \$1.00 each; 2 to 3 ft., \$2.00 each; 3 to 4 ft., \$3.00 each; 4 to 5 ft., \$4.00 each.

GLOBE ARBORVITAE—A new variety that is very handsome. In shape it is absolutely round or globular, very dense in growth, and does not require shearing. It does not grow over 4 to 5 feet tall; foliage is deep, dark green, its little branches being of unusual delicacy. Be sure to order one or more of these beautiful and attractive species and we will guarantee that it will please you. This is one of the most rare of the dwarf evergreens. Our trees are well rooted, transplanted and root pruned. 18 to 24 inches, \$1.50 each; 24 to 30 inches, \$2.00 each.

BERCKMAN'S GOLDEN ARBORVITAE—(Tr. *Orientalis Aurea Nana*)—A perfect gem for gardens, cemetery lots, formal plantings, window boxes and tubs. It is of dwarf, compact and symmetrical growth, with golden yellow foliage. 18 to 24 inches, \$2.00 each; 24 to 30 inches, \$3.00 each; 30 to 36 inches, \$4.00 each; 3 to 4 ft., \$5.00 each.

CHINESE COMPACT ARBORVITAE (Baker's Golden)—A new, formal, and very compact variety with bright green foliage, attractive and a great favorite. 3 to 4 ft., \$2.00 each; 4 to 5 ft., \$3.00 each; 5 to 6 ft., \$4.00 each.

CHINESE PYRAMIDAL ARBORVITAE (Tr. *Orientalis Pyramidalis*)—One of the tallest and hardiest varieties; of pyramidal habit and bright green foliage. 3 to 4 ft., \$2.00 each; 4 to 5 ft., \$2.50 each; 5 to 6 ft., \$3.00 each.

Braggs, Okla.,
July 28, 1939.

In the fall of 1931 I ordered the following fruit trees from you: five apple, five peach, two cherry and two Abundance Plum trees. Those plums are the finest grown around here. They have borne good crops since 1934.

I have sold sixty-five 8-lb. buckets at 25c a bucket and ten buckets for our own use. On one limb in a three-foot space there were 69 plums.

I won the blue ribbon at the show on them. I certainly do praise your fruit highly.

Yours truly,
WALTER IRVING.

EVERGREENS

● These Evergreens are **BALLED** and **BURLAPPED**, which means they are taken up with a ball of dirt around the roots and burlap is pinned or sewed around them. They are priced f. o. b. Rogers, Ark.

THE JUNIPERS

SILVER JUNIPER—Compact, conical form becoming 20 feet tall at maturity, and one-third as broad. Foliage of attractive glaucous blue. 3 to 4 ft., \$4.00 each; 4 to 5 ft., \$5.00 each.

JUNIPERUS VIRGINIANA—Green or bronze green foliage; a tall growing, hardy tree of great beauty. At home almost anywhere in the South and now being largely used in landscape planting; the tree from which the pencil wood is obtained. 3 to 4 ft., \$2.00 each; 4 to 5 ft., \$3.00 each.

JUNIPER, Blue (*Juniperus Virginiana glauca*)—This is one of the best trees offered today. It grows pyramidal hut has graceful spreading branches if left untrimmed. When sheared, a perfect column may be had. In color a light blue and a distinct contrast from any other of this group. 2 to 3 ft., \$3.00 each; 3 to 4 ft., \$4.00 each.

JUNIPER, Hill Dundee—This outstanding Juniper is upright growing, is bluish-gray in the spring and summer and changes to a plum-like color in the fall and winter. To create new interest in your evergreen plantings you should include this most excellent new Juniper. 2 to 3 ft., \$2.50 each; 3 to 4 ft., \$3.50 each.

JUNIPER, Pfitzer's (*Chinese pfitzeriana*)—This is the most popular of all the spreading types. Its habit of growth, its pendulous branches and attractive foliage is strikingly beautiful. The branches are horizontally spreading and the terminals slightly drooping. It lays close to the ground and for edging larger plantings there is nothing superior. Flowing lines are especially valuable in landscape planting and this Juniper seems to fill requirements better than any, both summer and winter, because of its ability to withstand the soot and dust of cities will thrive where others fail. 2 to 3 ft. spread, \$2.50 each; 3 to 4 ft. spread, \$3.50 each.

JUNIPER, Irish—Erect, slender, and formal in habit; column or pyramidal form, foliage sage green, very compact; perfectly hardy and a real beauty in combination with other forms and colors of evergreens. 1 to 2 ft., \$1.50 each; 2 to 3 ft., \$2.50 each; 3 to 4 ft., \$3.50 each.

JUNIPER, Savin—Handsome, moss green foliage; main branches protruding from the crown at a 45 degree angle; a fine dwarf ground cover, or filler in evergreen groups; very hardy and suited to most all soils. 1 to 2 ft., \$1.50 each; 2 to 3 ft., \$2.50 each.

JUNIPER, Andora—One of the finest spreading Junipers of recent introduction. Grows closer to the ground than the Pfitzer. During summer it has a silver reflex to the otherwise green foliage, in winter it turns a purplish cast, which is unusual in evergreens. 24 to 30 inches, \$2.00 each.

SPINEY GREEK JUNIPER—A very popular dwarf growing Juniper, forming a symmetrical cone of silver blue-green foliage. They make fine plants for grouping or use as single specimens. Extremely hardy and good growers. 2 to 3 ft., \$2.50 each; 3 to 4 ft., \$3.50 each.

THE PINES

PINE, Mugho (*Pinus montana mughos*)—This is an excellent dwarf pine, being globe shaped and erect branching. It is very attractive, especially in spring, when the new growth, which seems like miniature candles completely cover the bush. 12 to 18 inches wide, \$2.00 each; 18 to 24 inches wide, \$2.50 each.

AUSTRIAN PINE—From Central Europe. Leaves or needles stiff and dark green, hardy everywhere and one of the most valuable conifers for specimen trees or windbreaks, etc. 2 to 3 ft., \$1.50 each; 3 to 4 ft., \$2.00 each.

NORWAY PINE (*Red Pine*)—A two-leaved pine, native to Newfoundland; one of the most ornamental; extremely hardy and adaptable; suitable for clay soil; handsome foliage; excellent for hold effects. 2 to 3 ft., \$1.50 each; 3 to 4 ft., \$2.00 each.

SCOTCH PINE—A rapid grower, very hardy, from central portion of Europe, with short, rigid, light green leaves; very valuable for masses, specimen and screens. 2 to 3 ft., \$1.50 each; 3 to 4 ft., \$2.00 each.

WHITE PINE—An old and well known native tree, of rapid growth and entirely hardy. On account of government quarantine, this variety cannot be shipped west of Arkansas. 2 to 3 ft., \$2.00 each; 3 to 4 ft., \$3.00 each.



COLORADO BLUE SPRUCE



GEORGE W. EOFF, Landscape Gardener



BLACK HILLS SPRUCE

.. for Year Round Beauty

Let us help you with your landscape plantings. We are glad to give suggestions on your planting problems. Our Landscape Department has been created solely to serve you, to co-operate with you in giving your home grounds the usefulness and beauty it deserves. We urge you to call on us at any time to aid you in helping you to build a beautifully planted home.

SPRUCE

COLORADO BLUE—The queen of the spruce family; the color is a beautiful blue, which holds well all through the year; this is one of the most valuable of ornamental evergreens. 1 to 2 ft., \$3.00; 2 to 3 ft., \$5.00; 3 to 4 ft., \$7.00.

BLACK HILLS SPRUCE—A compact, shapely tree of a dark green color. It will endure cold and dry weather and consequently thrives under most trying conditions. It transplants very easily and because of its dense, sturdy growth, it makes beautiful foundation planting. 2 to 3 ft., \$2.00; 3 to 4 ft., \$3.00; 4 to 5 ft., \$4.00.

NORWAY SPRUCE—Becomes a tall tree of majestic, conical shape. One of the most rapid growing and shapely of the tall dark green spruces. 2 to 3 ft., \$2.50; 3 to 4 ft., \$3.50; 4 to 5 ft., \$4.50.

WHITE SPRUCE—One of the very best conifers, especially for cold climates. Compact, upright growing, long lived, retaining its branches to the ground, aromatic, drought-resisting; varies in color from light green to glaucous blue. 2 to 3 ft., \$2.00; 3 to 4 ft., \$3.00; 4 to 5 ft., \$4.00.

The Native Evergreens and Evergreen Special listed on this page are not Balled and Burlapped and can be shipped by Parcel Post.

Marfa, Texas
Dec. 10, 1941

Benton County Nursery,
Rogers, Ark.

Dear Sirs:

The order of Evergreens came in fine shape and all look grand. Thanks for the extra ones, and for sending such fine plants.

Very sincerely,

MRS. J. C. DARROCOTT

NATIVE EVERGREENS

JUNIPERUS VIRGINIANA—Our native of the Ozarks is one of the most beautiful of all the Cedar type. It adapts itself to most all soils and climates. It is a very fast grower. It is one of the most useful and characteristic trees of our American landscape, because of its beautiful form and dark green bluish foliage. In season the trees bear bright blue and silvery berries, containing the seeds, which require, under natural conditions, two years to germinate. The berries are a great attraction for the birds. The Red Cedar can be trimmed into any shape or size which makes it desirable for hedges as well as for specimen trees and for windbreaks. Plenty of Red Cedar about your home planting will always give entire satisfaction.

PINES—Our native. We desire to advise the planting of a pine wherever a strong, hardy evergreen is wanted. In groups or for avenues in particular situations it is one of the most available trees at our command. Taking into account its rapidity of growth, and the certainty with which it will speedily produce an effect, its beautiful light green foliage, its excellence for windbreaks, and landmarks, we consider it one of the best of the Pines.

2 to 3 ft. 40c each; \$30.00 per 100
3 to 4 ft. 50c each; 40.00 per 100
4 to 5 ft. 75c each; 60.00 per 100

BROAD LEAVED

ABELIA (Abelia rupestris grandiflora)—A beautiful low growing evergreen flowering shrub; leaves a glossy dark green contrasting effectively with the red tinged bark. The numerous small white tinged pink flowers resemble miniature Arbutus, having comparatively deep, slender throats through the individual flower is only about three-quarters of an inch in length. Blooms from June until frost; delicately sweet scented. Occasionally a "wild" vigorous growing shoot appears which should be pinched off when a dense shrub is desired. 18 to 24 inches, \$1.00; \$10.00 per dozen.

EVERGREENS

BOXWOOD, Buxus sempervirens—Every one is familiar with Boxwood and its good qualities. There is hardly a plant that can be used in quite so many positions. For edging as specimens for urns, window boxes, it is very useful. The foliage is always a shining dark green even through the winter. It is a heavy feeder and should never be planted in soil unless it can get plenty of fertility and moisture. 12 to 18 inches, \$1.00; 18 to 24 inches, \$2.00; 2 to 3 feet, \$3.00.

EVERGREEN EUONYMUS (Euonymus Patens)—One of the best broad leaf evergreens for the Southwest. Luxuriant of growth and naturally symmetrical in shape, is as well adapted for a hedge as for a specimen plant or a background for a shrub group; may be kept in almost any desired shape by pruning; leaves occasionally followed by bright red berries. 2 to 3 ft., \$1.00; \$10.00 per dozen.

HOLLY, AMERICAN (Ilex opaca)—Everyone certainly knows the native holly with its large, glossy leaves and red berries. Nursery grown plants are comparatively easy to transplant, provided the leaves are clipped off at planting time. This native is not half appreciated as it can be sheared into as compact specimens as Boxwood, or if left to develop naturally makes a bush or small tree that is wonderful at all seasons of the year. 2 to 3 ft., \$3.00; 3 to 4 ft., \$4.00.

MAGNOLIA GRANDIFLORA—The grandest of evergreens and flowering trees. Has large, glossy bright green leaves. Succeeds throughout Texas and Oklahoma, as well as in other southern states. By clipping off all but a few of the tip leaves when taken up, and treated as in our handling, they are readily transplanted. 12 to 18 inches, 75c; 18 to 24 inches, \$1.00; 24 to 30 inches, \$1.50; 30 to 36 inches, \$2.50.

MAHONIA (Berberis aquifolia) (Oregon Grape)—Dense low spreading shrub, beautiful holly-like foliage, glossy green, bluish-purple and bronze, moderate growth, 3 to 5 feet, exceedingly hardy; blossoms yellow racemes. March to May, followed by blue grape-like berries. Fine for low shrubberies, mass plantings, individual specimens or groups, equally good in shade or sun. 10 to 12 inches, 75c; 12 to 18 inches, \$1.00; 18 to 24 inches, \$1.50.

NANDINA—Upright in habit of growth, medium height, narrow pointed foliage which is a rich red when young, turning to dark green when fully matured, and which takes on bright colors during the fall. Flowers are white followed by red berries in the fall, which remain on well into the winter. Thrives in rich soil with good drainage. 18 to 24 inches, \$1.25; 24 to 30 inches, \$1.75.

EVERGREEN SPECIAL. . . .

6 Evergreens Postpaid for \$1.00

One each of our three-year-old, most popular, most beautiful and most dependable Evergreens: Blue Spruce, Black Hills Spruce, Norway Spruce, Mugho Pine, Scotch Pine and Austrian Pine. 4 to 8 inches high. Postpaid.

RELAX NERVES . . . MAINTAIN MORALE

Spend More Time in Your Garden



A FULL MEAL IN EVERY TABLET

FULTON'S PLANTABBS provide all of the food elements essential to stimulate healthy plant growth, increase vigor and blooms, plus Vitamin B₁ and root-producing hormones. A complete, balanced food and tonic for everything that grows in soil. Safe to use, guaranteed not to burn. Each tablet is a FULL MEAL and may be either planted in the soil like seed or dissolved and used as a rich liquid fertilizer.

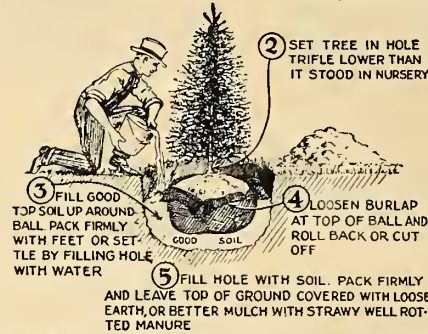
Contains 11% nitrogen, 15% available phosphoric acid, 20% soluble potash. Clean, odorless, convenient. Use Fulton's Plantabbs and enjoy the finest plants, flowers and vegetables you ever had.

30 Tablets.....25c 200 Tablets.....\$1.00
75 Tablets.....50c 1000 Tablets.....3.50

For economy buy the larger sizes. Will not go stale nor be affected by damp weather.

How to Plant Evergreens:

(1) Dig hole a foot larger and deeper than ball of earth. Provide good, loamy top soil to fill around ball.



EVERGREENS
(Planted for Windbreak)

For results in 6 years or more . . . 10 feet apart
For results in 4 years 5 feet apart
(Take out every other tree later.)
For results in 2 years 2½ feet apart
(Gradually thin out to 10 ft. apart as trees develop.)

NOTE: Evergreens with bare roots are planted the same as trees. Take care never to leave the roots exposed a single moment.

CARE AFTER TRANSPLANTING

PRUNING TREES AND SHRUBS. After trimming back and pruning the limbs of ornamental trees, when planting, they need only enough trimming to shape them properly. Low side limbs should be removed to raise the head until after two season's growth, when they may be gradually removed until the head is at the desired height. Shrubs need heading-in of the limbs getting out of bounds and the cutting out of old wood occasionally to keep them in proper form. The general rule is to trim fall blooming shrubs, like hydrangeas, in the spring, and spring blooming shrubs, like spireas, in the early summer directly after they have bloomed.

CULTIVATION. Frequent shallow cultivation will produce a dust mulch and conserve much needed moisture in the soil. That is the most practical method of handling larger plantings. It should not be continued after the middle of August, otherwise the trees may not have time to mature and harden in preparation for winter.

IN THE ORCHARD it is best to cultivate all trees the same as you would corn, for several seasons, until they are large enough to shade the ground between them. During the summer it is a good practice to put in a leguminous cover crop. A cover crop will protect the soil and help prevent blowing and washing. It improves the chemical and physical condition of the soil by adding humus.

MULCHING. For only a few trees, shrubs, etc., a mulch of such materials as grass clippings, old strawy manure, marsh hay or dead leaves may be used instead of a dust mulch.

WATERING. Artificial watering, as an emergency measure in case of drouth is highly desirable. In any case water thoroughly. Do not sprinkle. Give the plant all the water it will take at one time. No more water need be applied for several days when this is done.

FERTILIZING. A good barnyard manure is the best fertilizer. When needed, a good application of manure applied around the orchard tree under the branch drip will be very beneficial.

Small fruits of all kinds should be well fertilized every year. Manure Strawberry patch when plowing but not after plants are set.

ASPARAGUS AND RHUBARB. Plant Rhubarb 3 feet apart in rich garden soil, with the buds 1 inch below level of the ground.

Set Asparagus in rich soil a foot apart in a furrow 6 inches deep. Cover 3 inches and tramp. In hoeing, work soil towards plant so that by mid-summer the ground is level. Do not cover 6 inches deep at first or plants will be smothered. Cut sparingly the second year; after that cut all shoots 6 or 8 inches high until about the middle of June, then let tops grow.

Fertilize Rhubarb liberally with stable manure every year; also Asparagus when through cutting in June.

How to Plant ROSES



Planted wrong. Not deep enough, roots bunched.

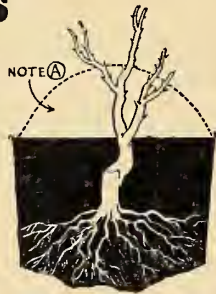
Roses require a plentiful supply of organic matter in the soil and thorough drainage. An improvement in both soil conditions and drainage can be gained by proper preparation of the beds. Of course, the rose bed should not be located in a place where the surface drainage is bad. The water should be made to drain away from, rather than toward the beds.

Excavating the bed to a depth of three feet is none too deep. At this depth a layer of stones will provide drainage when it is needed. Filling the bed in layers of manure, then dirt, then manure, until the bed is filled, allowing for a settle, will provide a deep fertile soil which the roses will respond to by producing a rich growth and many flowers. Roses like a medium heavy soil.

The manner of planting the rose is the same as planting a shrub, but they are pruned differently. All grafted roses should be planted deep enough to bring the joint between the root stock and top at least 3 inches below the surface of the ground. Unless this is done the strong sturdy root is liable to send up a shoot which, if not cut off, will flourish and cause the grafted top to die.

The pruning of roses for planting differs according to the type of rose planted. Cut back the weaker growth. When planting in the fall, the dormant rose should be cut back about one-half its length. Prune again in the spring, leaving but 2 or 3 stems with 4 or 5 buds on each stem. Cut back spring planted roses to two or three stems with four or five buds on each.

NOTE A: Fall planted roses can be protected by mounding up the dirt around them and covering the ground about with litter to prevent alternate freezing and thawing.



Planted right. Roots spread out, deep enough.

SPACING ROSES

	Planting Distance	
	Close	Normal
Bush Roses	2 feet	2 ½ feet
Hybrid Teas	1 ½ feet	2 feet
Hybrid Perpetuals	2 feet	2 ½ feet
Climbers, on banks	2 ½ feet	3 to 4 feet
Climbers, on fences	8 feet	10 to 15 feet



BUMALDA SPIREA



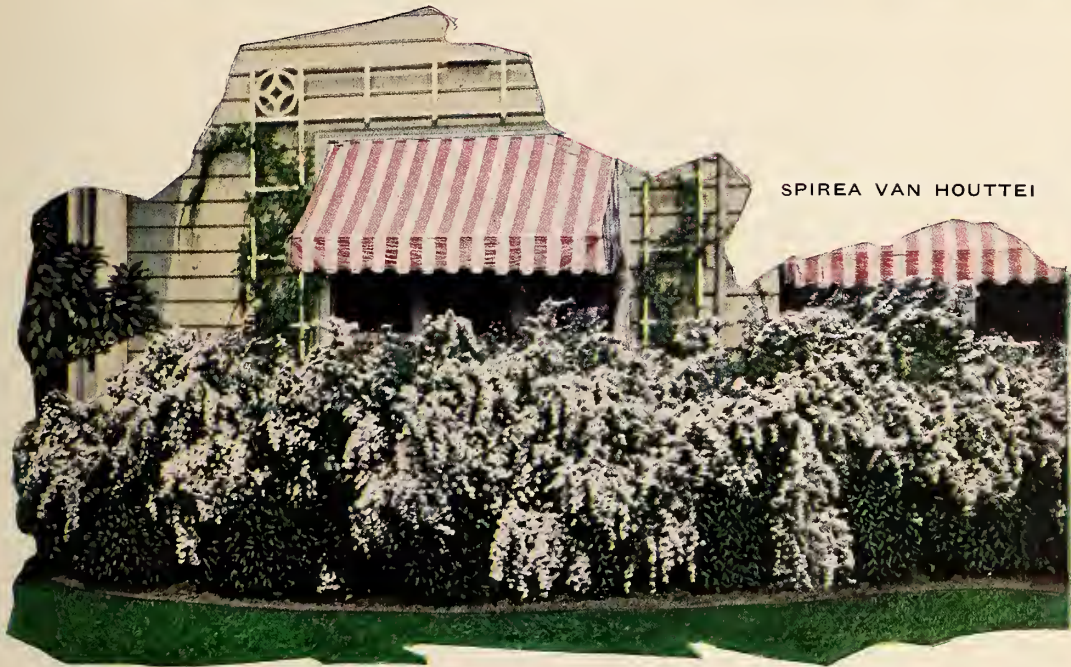
**SHRUB
Special . . .**

11 1-Year-Old Shrubs for Postpaid **\$1.00**

One each of the following shrubs of our one-year size, delivered to your door. ALTHEA (Rose of Sharon), honeysuckle Vine, CALYCANTHUS (Sweet Shrub), DEUTZIA, FORSYTHIA (Golden Bell), SPIREA (Callosa Rosea), SPIREA (Van Houttei), SPIREA (Billardi Pink), HYPERICUM (Yellow Flower), SNOWBERRY (Coralberry), and WEIGELA.



RED LEAF BARBERRY



SPIREA VAN HOUTTEI

Special Bargain SPIREA Offer . . .

15 Spirea Van Houttei 1-2 ft. size . . .

\$1.00
PRE-PAID



YDRANGEA P. G.



FORSYTHIA



MOCK ORANGE



JAPAN BARBERRY



BUSH HONEYSUCKLE



TALISMAN

Everblooming Hybrid ROSES



CONDESSA DE SASTAGO



REV. F. PAGE ROBERTS

OUR FAVORITE
Special Bargain
ROSE Offer . . .
12 Roses, **\$3.00**
2-yr. size:
1 each of varieties shown:

1 Talisman	1 Columbia
1 Condesa de Sastago	1 Red Radiance
1 Rev. F. Page Roberts	1 Pink Radiance
1 E. G. Hill	1 K. A. Victoria
1 Betty Uprichard	1 Dame Edith Helen
1 Golden Dawn	1 Pink Radiance



E. G. HILL



BETTY UPRICHARD



GOLDEN DAWN



COLUMBIA



RED RADIANCE



PINK RADIANCE



K. A. VICTORIA



DAME EDITH HELEN



PINK RADIANCE