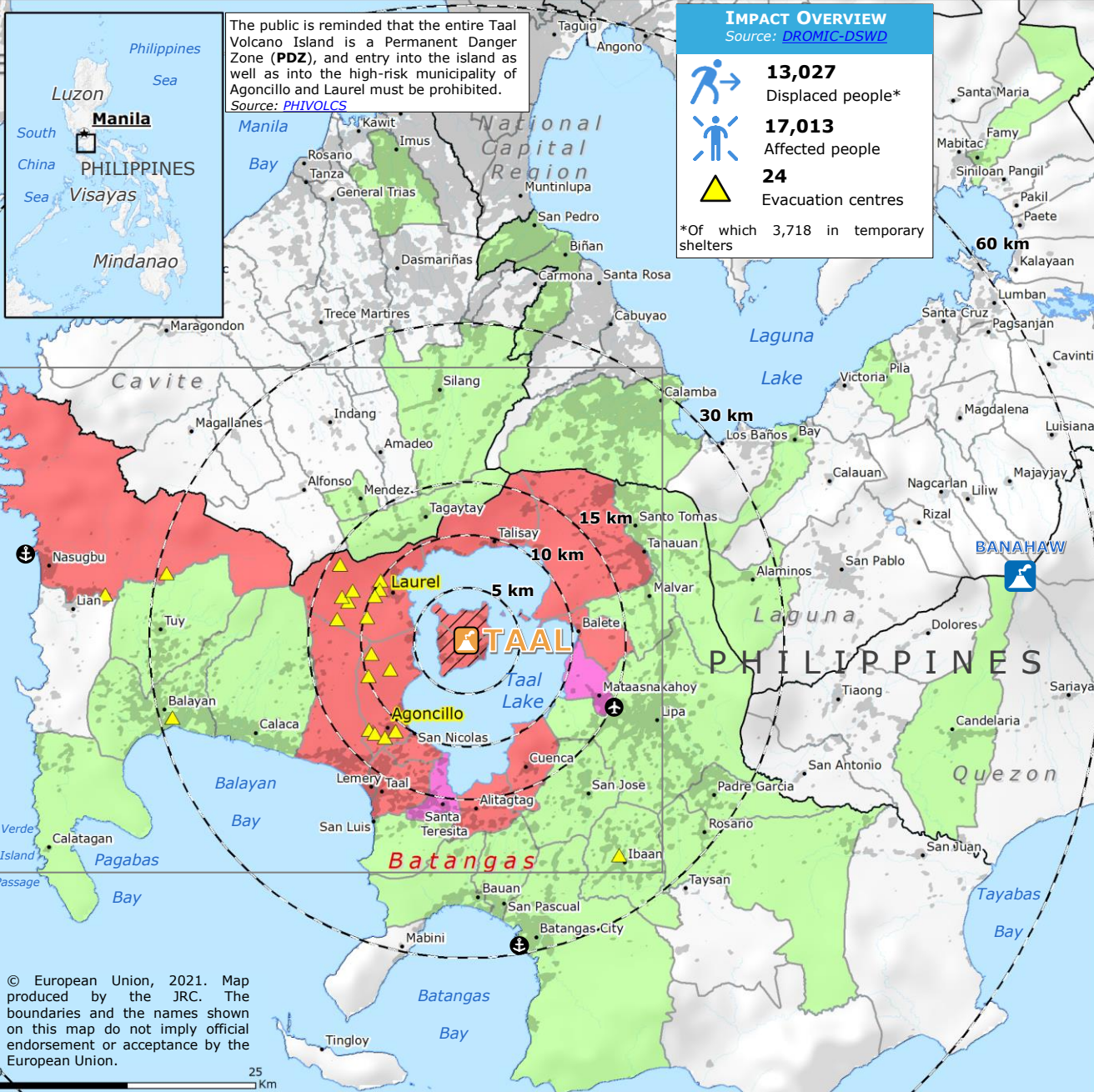


Philippines | Taal volcano, recent activity



The public is reminded that the entire Taal Volcano Island is a Permanent Danger Zone (PDZ), and entry into the island as well as into the high-risk municipality of Agoncillo and Laurel must be prohibited.
Source: PHIVOLCS

IMPACT OVERVIEW

Source: [DROMIC-DSWD](#)

- 13,027** Displaced people*
- 17,013** Affected people
- 24** Evacuation centres

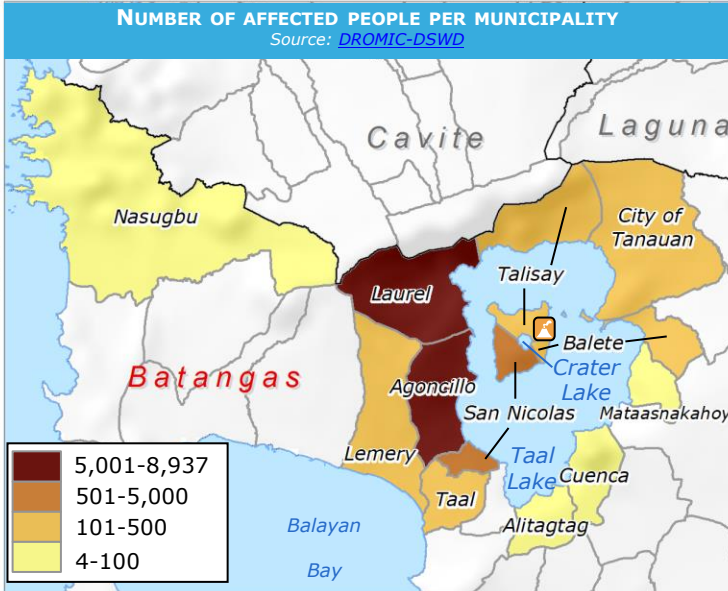
*Of which 3,718 in temporary shelters

-On **01 July at 23:16 UTC** (15:16 local time) a phreatomagmatic eruption occurred from the main crater and, at **23:37 UTC** (15:37 local time), the Philippine Institute of Volcanology and Seismology (PHIVOLCS) has raised the alert level at 3 (Magmatic Unrest).
-Over the past 24 hours (15 July 8:00 AM local time), 17 volcanic earthquakes have been recorded as well as high levels of volcanic sulfur dioxide (SO₂) emissions and steam-rich plumes rose up to 1,800 metres before drifting southwest from the Taal Main Crater.
Source: [PHIVOLCS](#)

DEADLY TAAL ERUPTIONS SINCE 1911

Source: [NOAA-NGDC](#)

YEAR	FATALITIES	ASSOCIATED EVENT	EU RESPONSE
1911	1,335	Tsunami	
1965	355	Tsunami	
2020	39		EMSR418 , DG ECHO ALERT funding 750,000 EUR , DG ECHO Daily Maps



- Taal volcano [GDACS](#) Orange Alert
- Active volcano Source: [PHIVOLCS](#)
- SITUATION OVERVIEW**
- Affected municipality
- Affected/hosting municipality
- Hosting municipality
- Evacuation centre Source: [DROMIC-DSWD](#)
- Permanent Danger Zone (PDZ) Source: [PHIVOLCS](#)
- Name** Affected province
- Name** Municipalities under entry ban Source: [PHIVOLCS](#)
- Populated area Source: [JRC-GHSL](#)
- Municipality border
- Province border
- Main airport
- Main port

© European Union, 2021. Map produced by the JRC. The boundaries and the names shown on this map do not imply official endorsement or acceptance by the European Union.