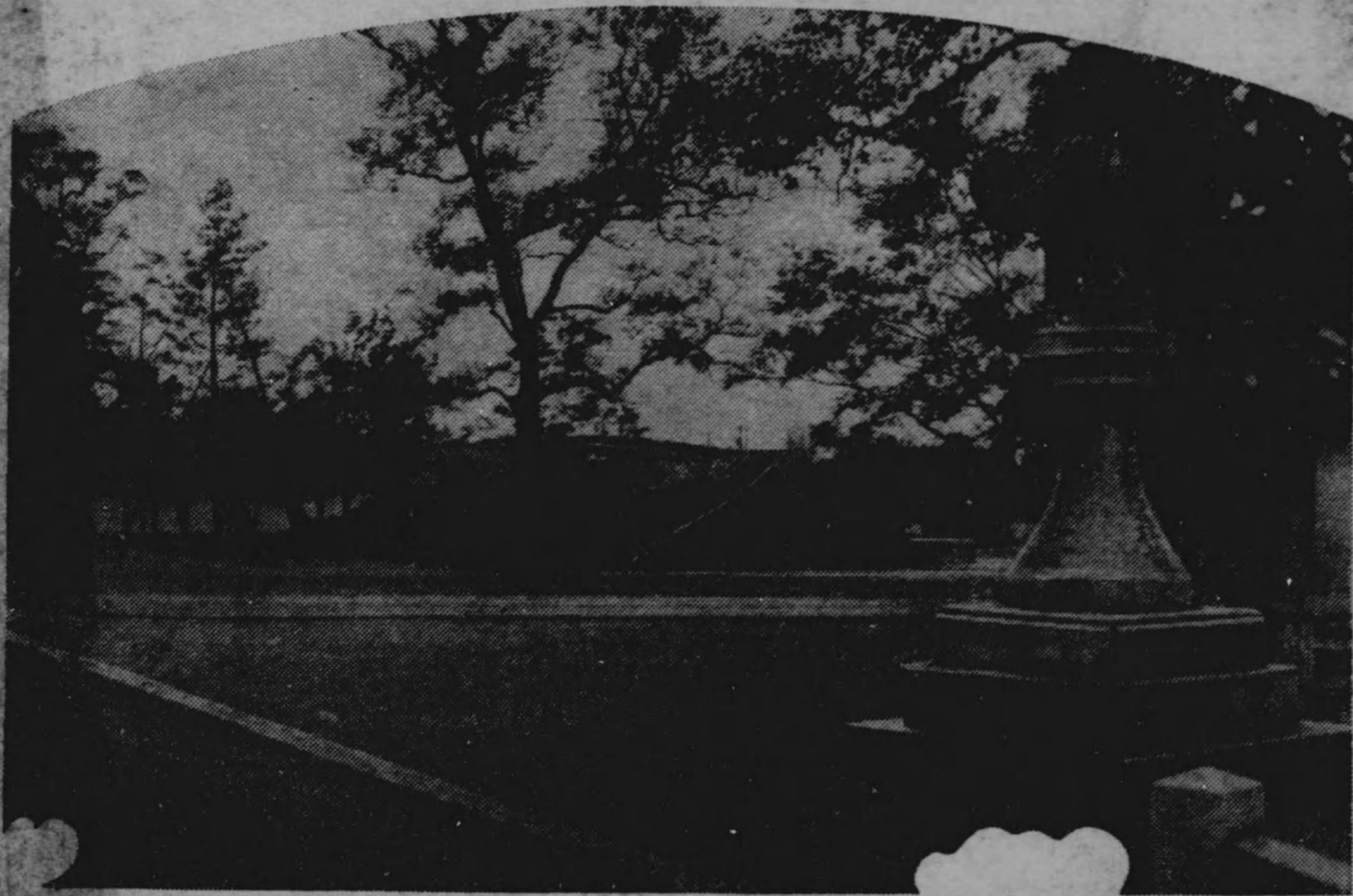


特 268

193

報 畫 害 水 風 大

Pictorial News of The Typhoon Disaster



Published by

The Osaka Shuppan-sha

23 Uyehommachi Nichome, Minamiku,

Osaka, Japan.



0040274000

0040274-000

特 268 - 193

大風水害画報

大阪出版社

昭和9

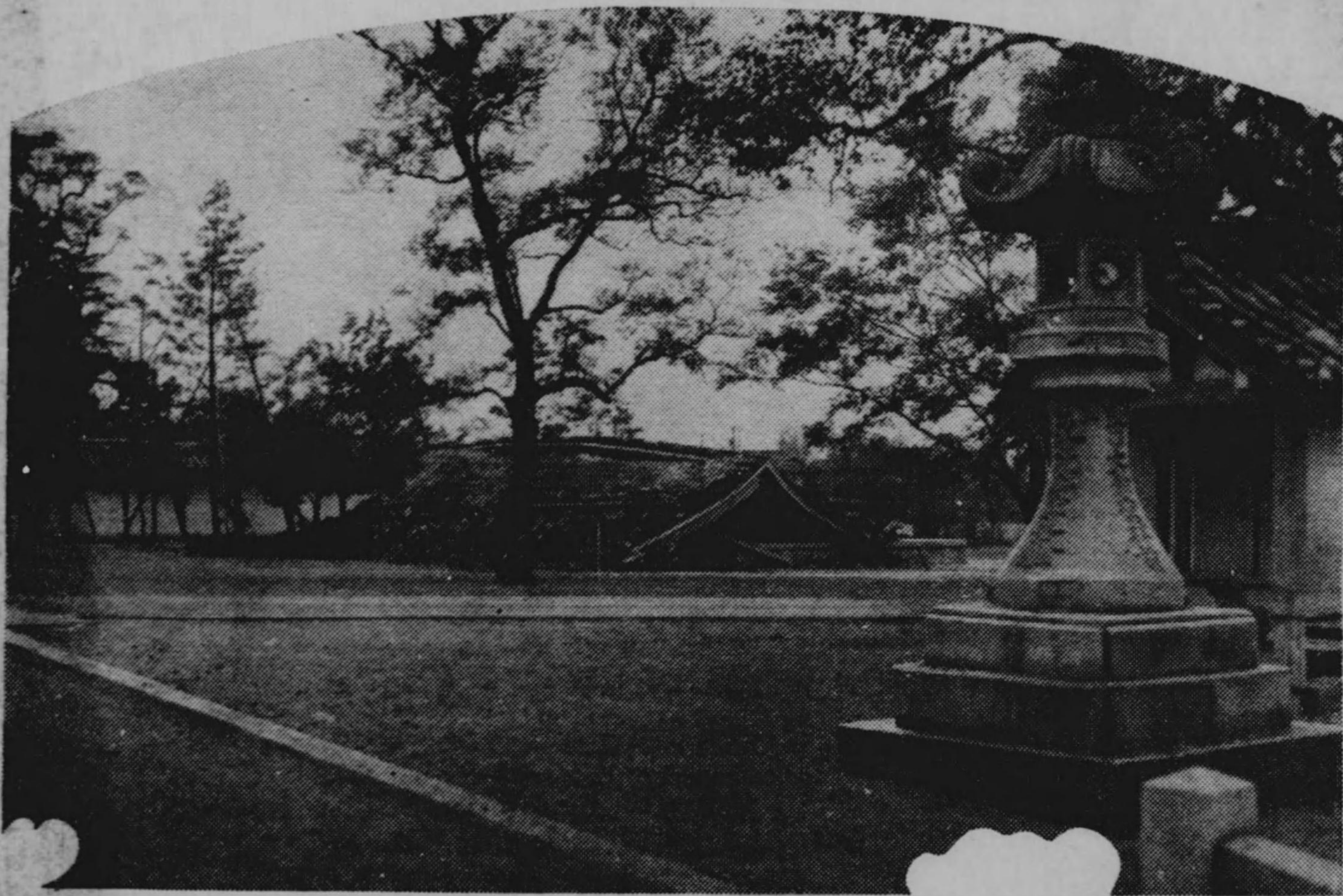
AGI

特 268

193

報 畫 害 水 風 八

Pictorial News of The Typhoon Disaster



Published by

The Osaka Shuppan-sha

23 Uyehommachi Nichome, Minamiku,

Osaka, Japan.

兩殿下には兵庫縣武庫郡大庄村に成らせられ、同村長より被害状況を詳細に御聴取遊ばされ、畏くも御見舞として金一封を罹災者に賜はつた。



秩父宮同妃兩殿下の罹災地御視察

Warm Words Given By Prince Chichibu

T. I. H. Prince and Princess Chichibu expressed their solicitude over the typhoon disaster in both Osaka and Hyogo prefectures on Wednesday (October 3, 1934) to Governors Shiraibu Agata and Takesuke Shirane of Osaka and Hyogo prefectures, respectively.

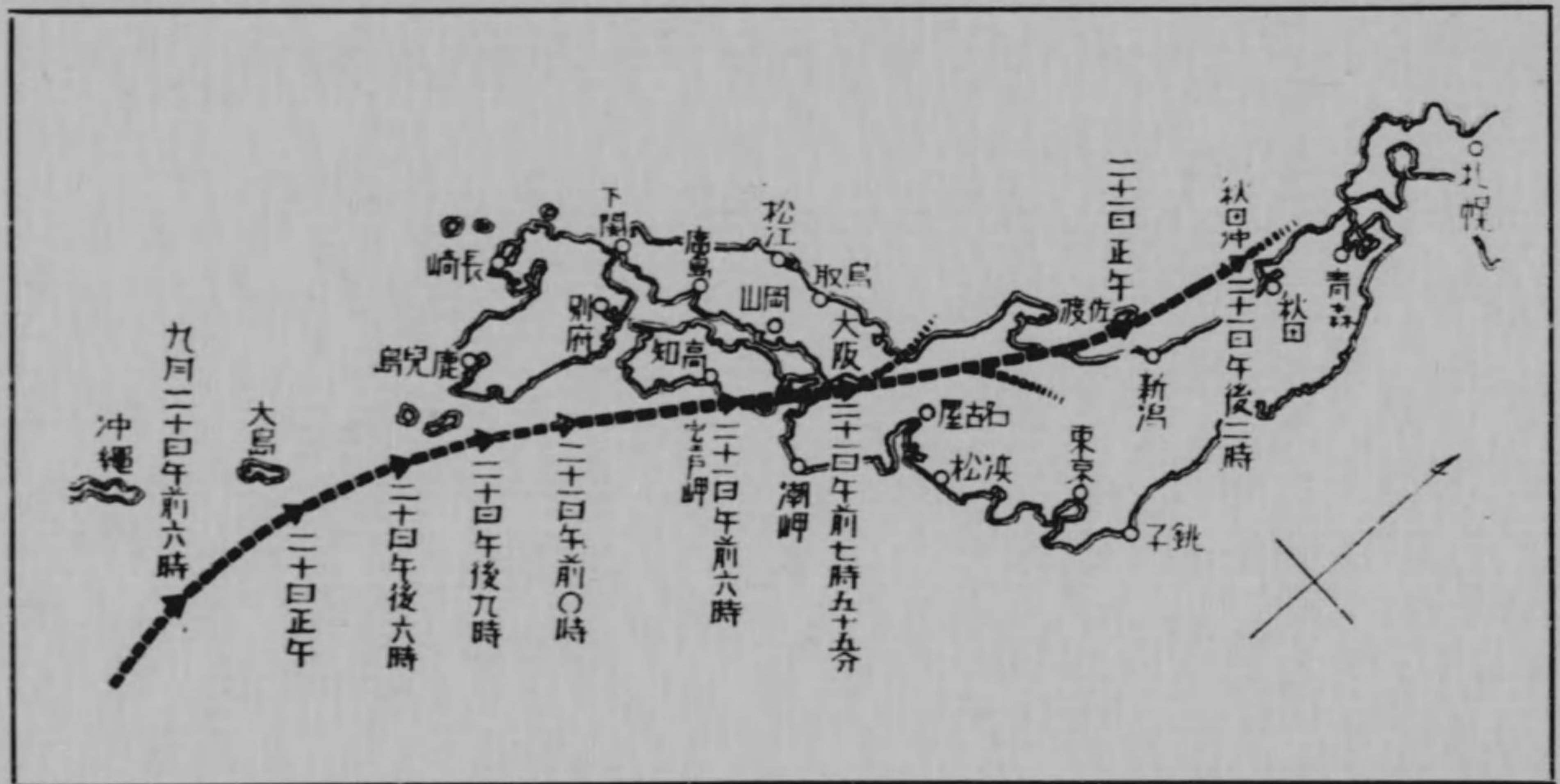
Their Highnesses arrived at Kobe station from the capital at 10.20 a.m. Wednesday, and after inspecting the Kawasaki dockyard's airplane factory, registered at the Oriental Hotel at noon. There the Prince and the Princess were hosts at a luncheon for Governors Agata and Shirane. The officials thanked Their Highnesses for their monetary gift to the suffering people, and at the same time reported on the destruction in the two prefectures, and were honored with words of inquiry.

After the luncheon, the Sovereign's brother and his consort visited the Ojo primary school at Ojo-mura, Muko-gun, Hyogo prefecture, and inspected the affected area in the neighborhood.



特268
193

路經の風颶



未に方地畿近り亘に日一十二りよ日十二月九年九和昭
るあてく如の圖上は路經の風颶るたへ與を害被の有曾

(測觀所候測阪大)

The Path of the Typhoon of September 20-21, 1934.

Based on reports of

The Osaka Weather Observatory.

築港附近に於ける悲惨たる光景



Chikko, Osaka, filled with the wreckage of houses and wind-scattered property.

三百名以上の死者を出した島外保養院



The Sotojima leper colony, where more than 300 inmates were killed.

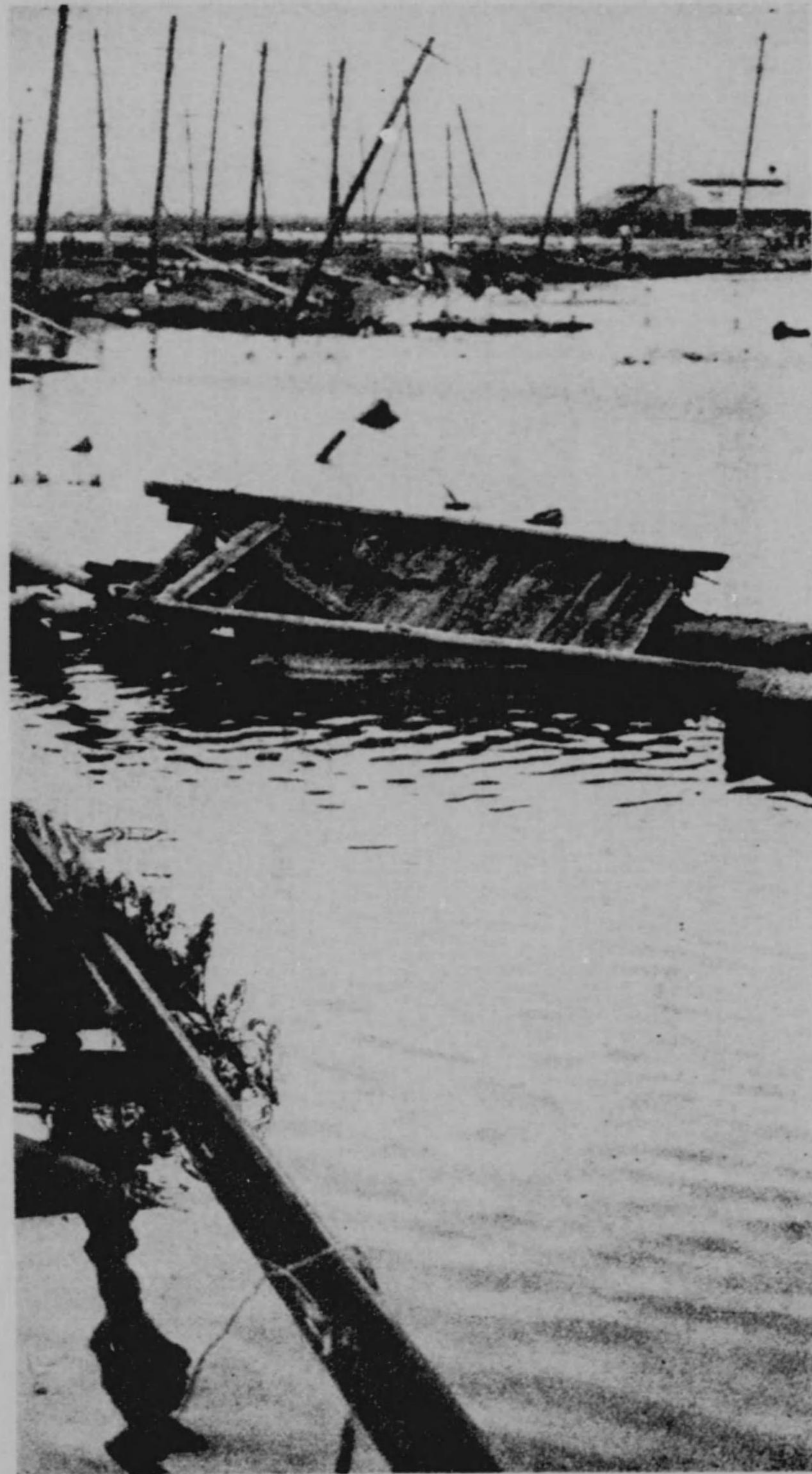
大阪商船会社汽船瑞鳳丸岸壁に打揚るる



Suffering from the typhoon disaster of O. S. K.' Steam ship Zui-Ho Maru.



In the neighborhood of Yamatogawajiri
the high waves and the rails of the Shin-



where was flooded by
Hankai line were bent.

高
潮
襲
來

大和川尻附近に於て高潮に浚はれた新阪堺線の線路



に察視状惨てじ奉を旨聖
 従侍松久るたれらせ阪來
 察視面方口川阪大の

Chamberlain Hisamatsu,
 by Imperial command,
 came to the afflicted area
 to make a personal in-
 spection. He is seen in
 Kawaguchi, Osaka.

× × ×

たし出を者死の名一十四
 し出掘體死の校學小陣西

A typical scene marking
 the gale's path: The
 Nishijin primary school
 where 41 pupils were
 killed.

橋 棧 港 築 阪 大 た れ さ 壊 破



What was left of Osaka's Chikko pier.

水 浸 の 面 方 町 鶴 阪 大



Scene in the neighborhood of Tsurumachi, Osaka,
 which was flooded by the rising sea water.



Out of nearly 300 dwellings at Nunoyamachi, Nishi Yodogawaku, Osaka city, only two houses passed safely through the storm.

大阪市西淀川區布屋町にては僅かに二軒を餘すのみにて約三百軒全部波に流された



A ship which was carried up to dry land by the high waves.

高潮のため街路上に打揚げられた船

山の船たれらせ寄き吹め爲の風暴



Rivers in Osaka were choked with wrecked boats which were blown up the streams by the devastating typhoon.

出 した 三 寶 濱 の 惨 状



Sampohama near Osaka, where an especially

最 も 多 く の 死 傷 者 を



large number of fatalities occurred.



プー
ール
ル女
學校
倒壞
して
二十
數名
の女
學生
壓死

Ruins of the
Bishop Poole
Girls' High
school, where
more than 20
students were
killed.

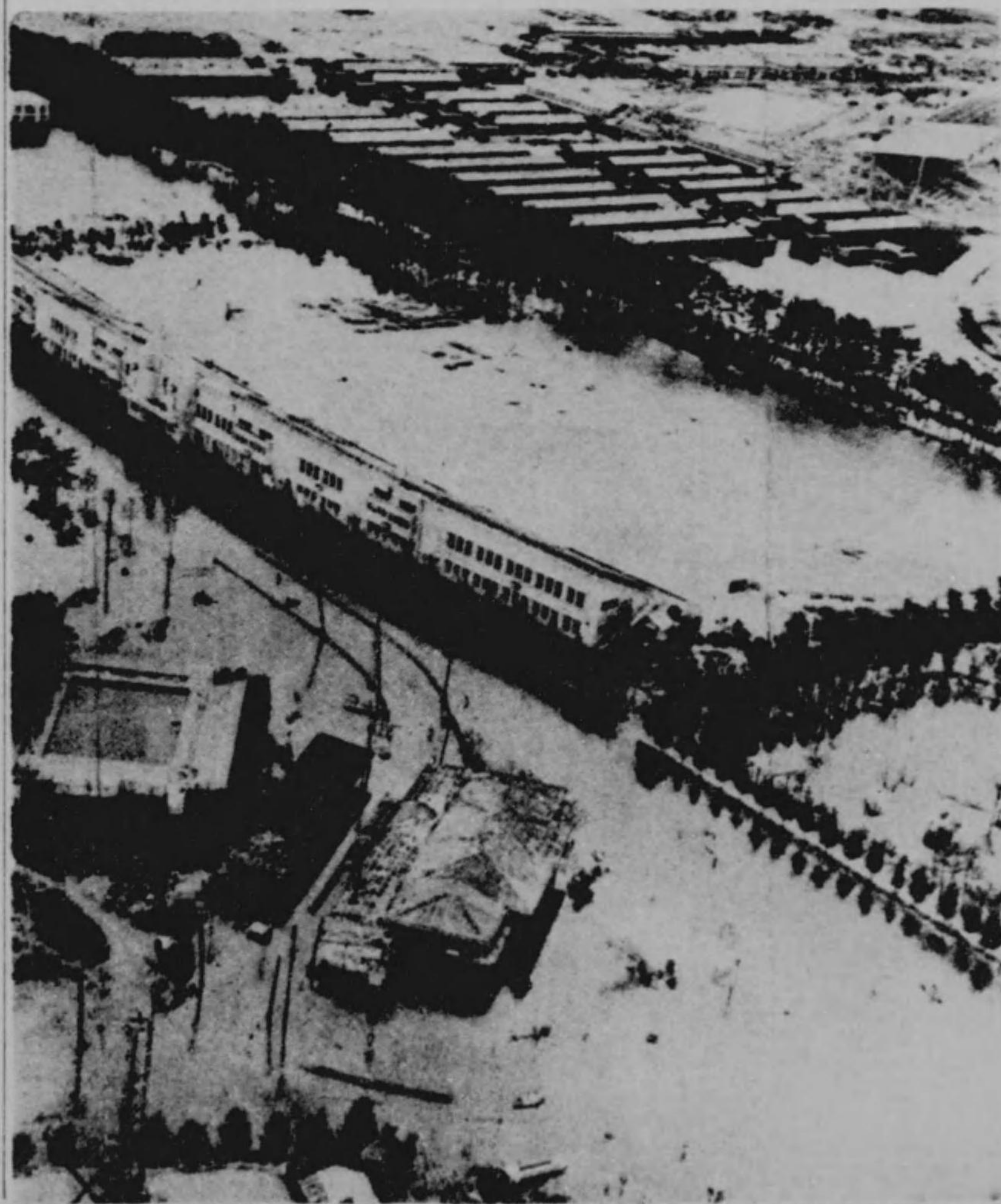
狀 慘 の 校 學 小 等 高 南 豊



The Honan higher primary school in the suburb of Osaka
which was crashed by typhoon, and many pupils
were killed there in the fall of the building.

負に齊一もき若も老
す出搬を者傷

Old and young do
not tarry in seizing
this great opportunity
to help injured fellow-
men.



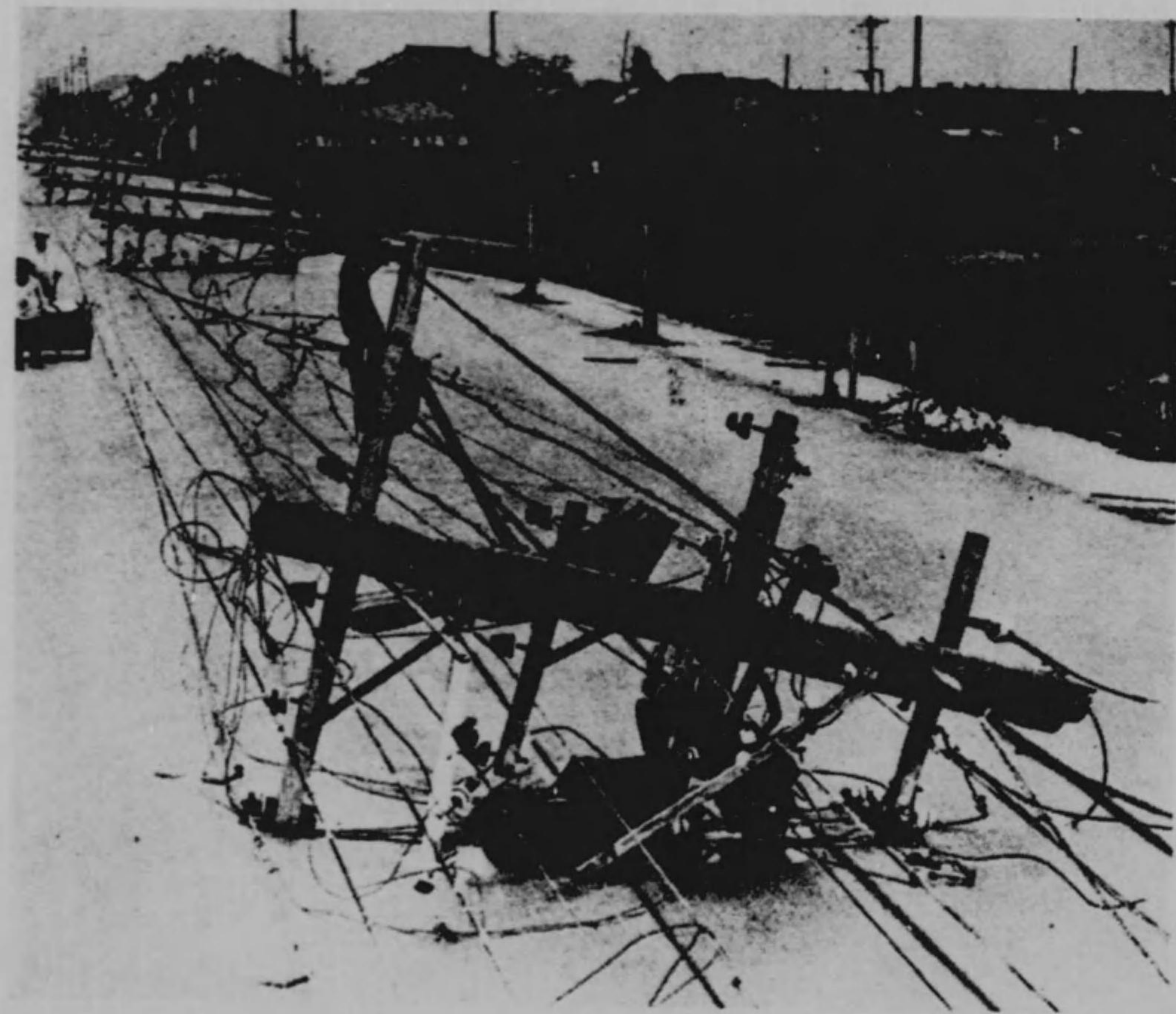
濱甲子園附近の文化住宅
街は高潮の襲来にて一面
泥海化した。この邊の家は平均九呎の
水に浸された。

In the vicinity of Ha-
ma-Koshien which was
turned into a veritable
sea of mud after storm.
These houses were inun-
dated to an average
depth of nine feet.

船汽のく多たれらげ揚ち打に地陸



The steam-ships which were carrid on land by waves.



天王寺平野間の電柱悉く吹き倒さる

Telegraph poles between Tennoji and Hirano,
Osaka, were all blown down.

るなと敷下名餘十二れさ倒き吹塔重

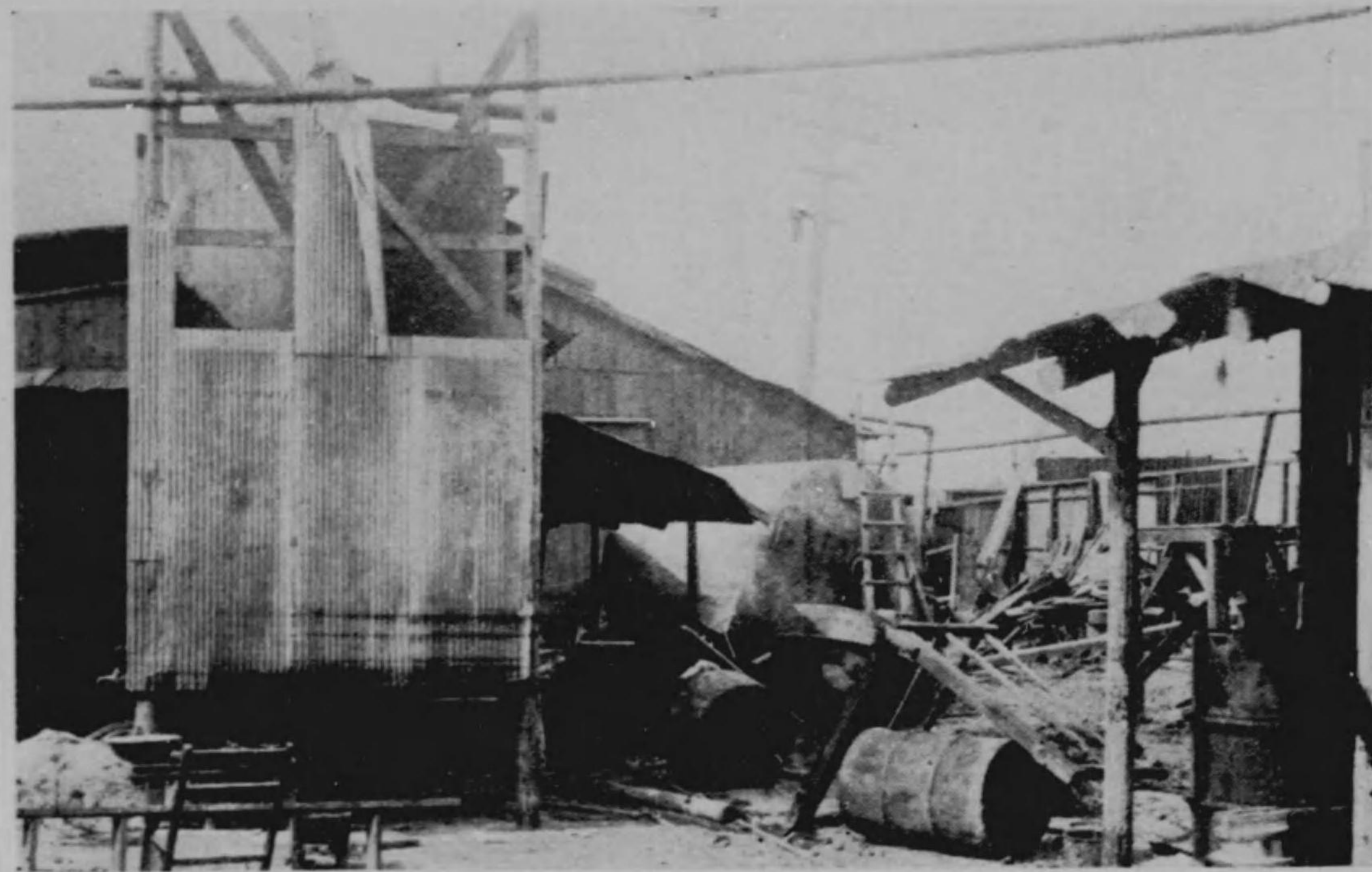


The famous five-story pagoda of the Tennoji temple of
and more than 20 persons were taking shelter within

五な名有——内境寺王天ため極を状惨

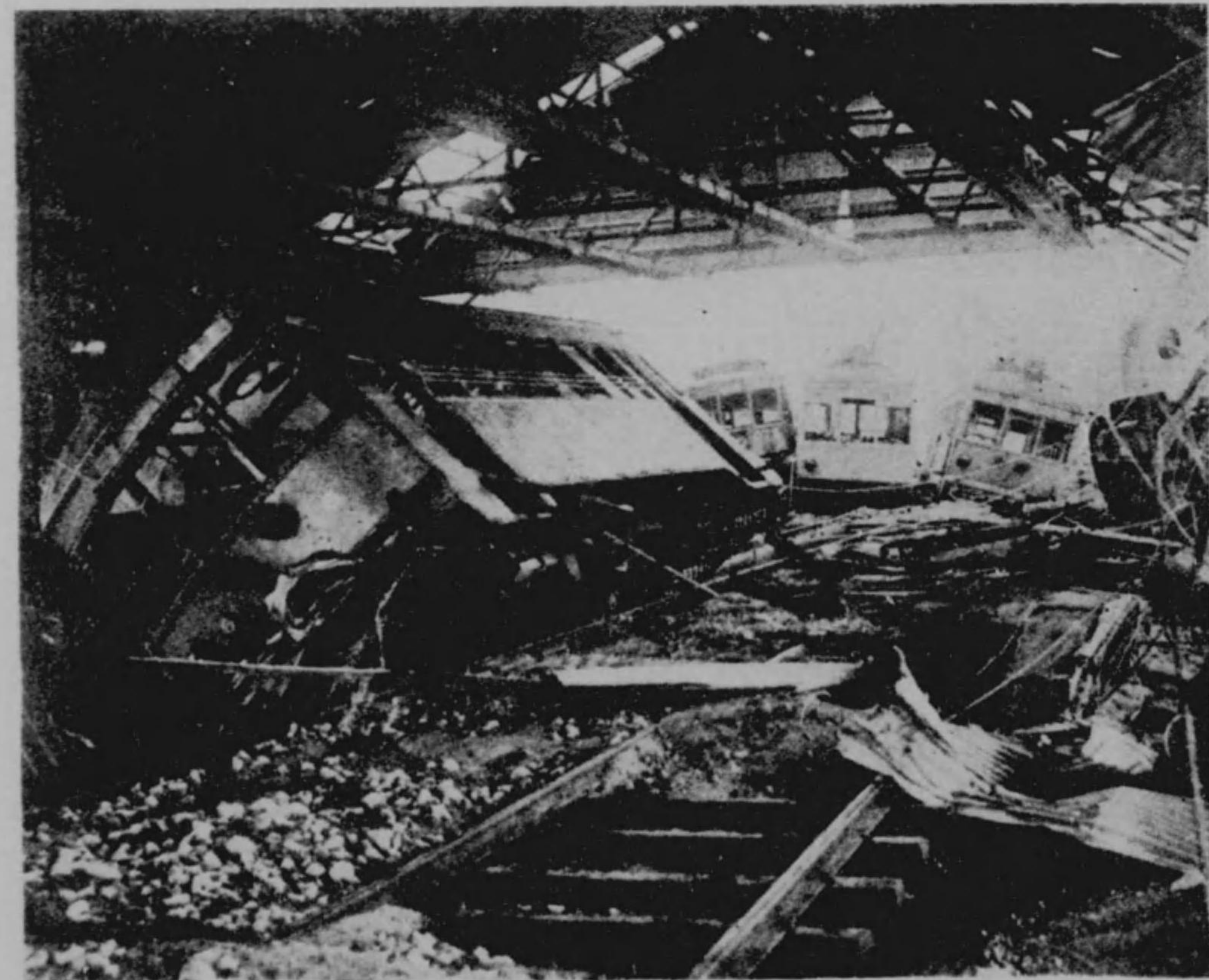


Osaka collapsed just before 8 o'clock Friday morning (21),
the hall on the ground floor when the tower crashed.



此花區恩貴島南之町山本新聞インキ工場貯藏場の慘憺たる光景

The storing place of the Yamamoto News paper Ink Mfg. works, Okijima-Minamino-cho, Konohanaku, Osaka, was Crashed cruelly.



暴風に吹き倒された電車

Tramcars which were overturned by gale.



船汽たれらげ揚打とンーレクろせ壊倒

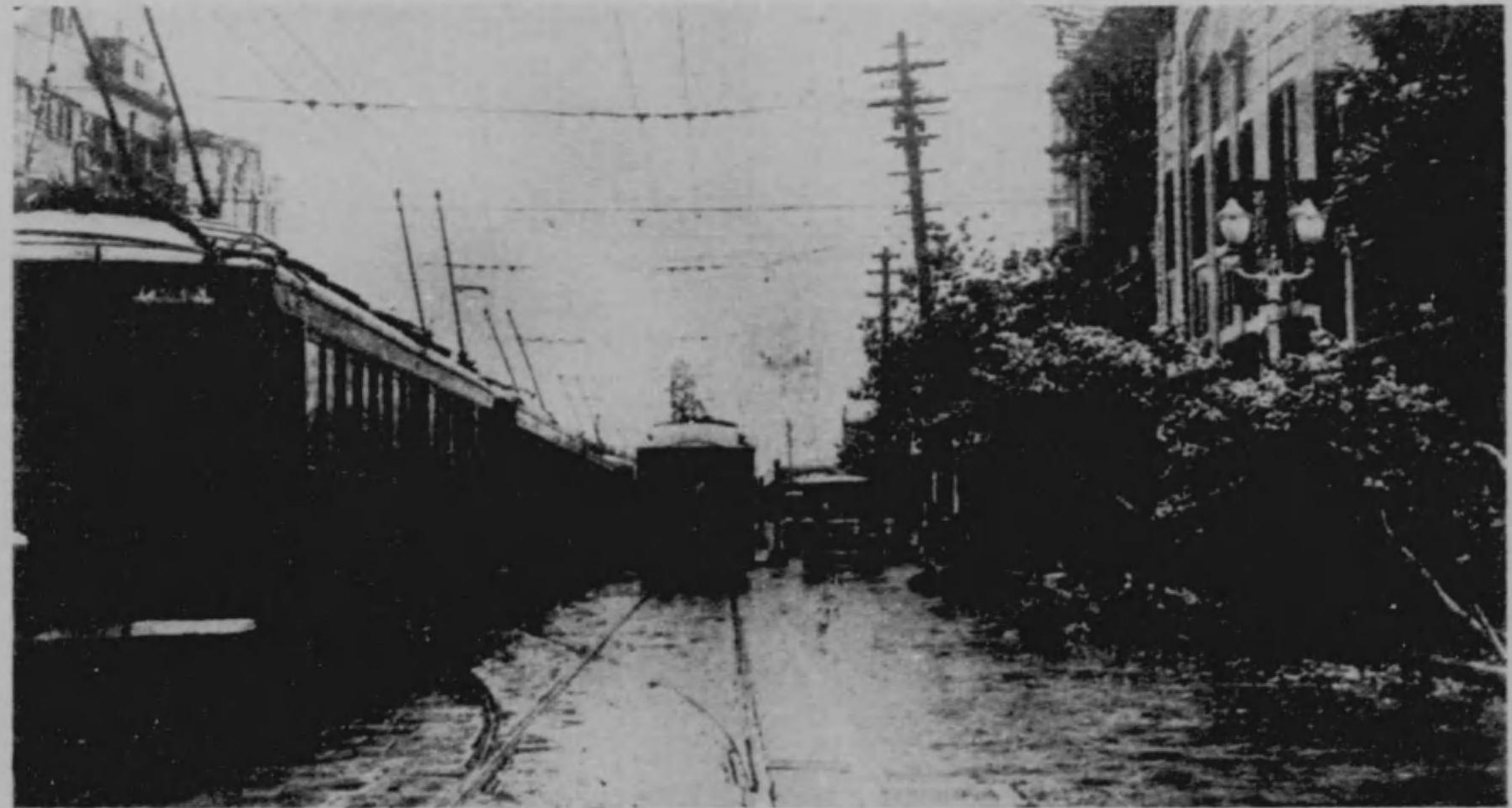
A giant crane that was torn loose from its base and a vessel that was driven ashore at Sakurajima, Osaka-city.



塔の重五寺王天たし壊倒

The five-story pagoda of Tennoji, one of the most historic temples in Osaka, after storm.

列の車電電停に筋堺のき抜目阪大



Stoppage of the electric cars at Sakaisuji, business center of Osaka city.

進邁に舊復の校學壊倒



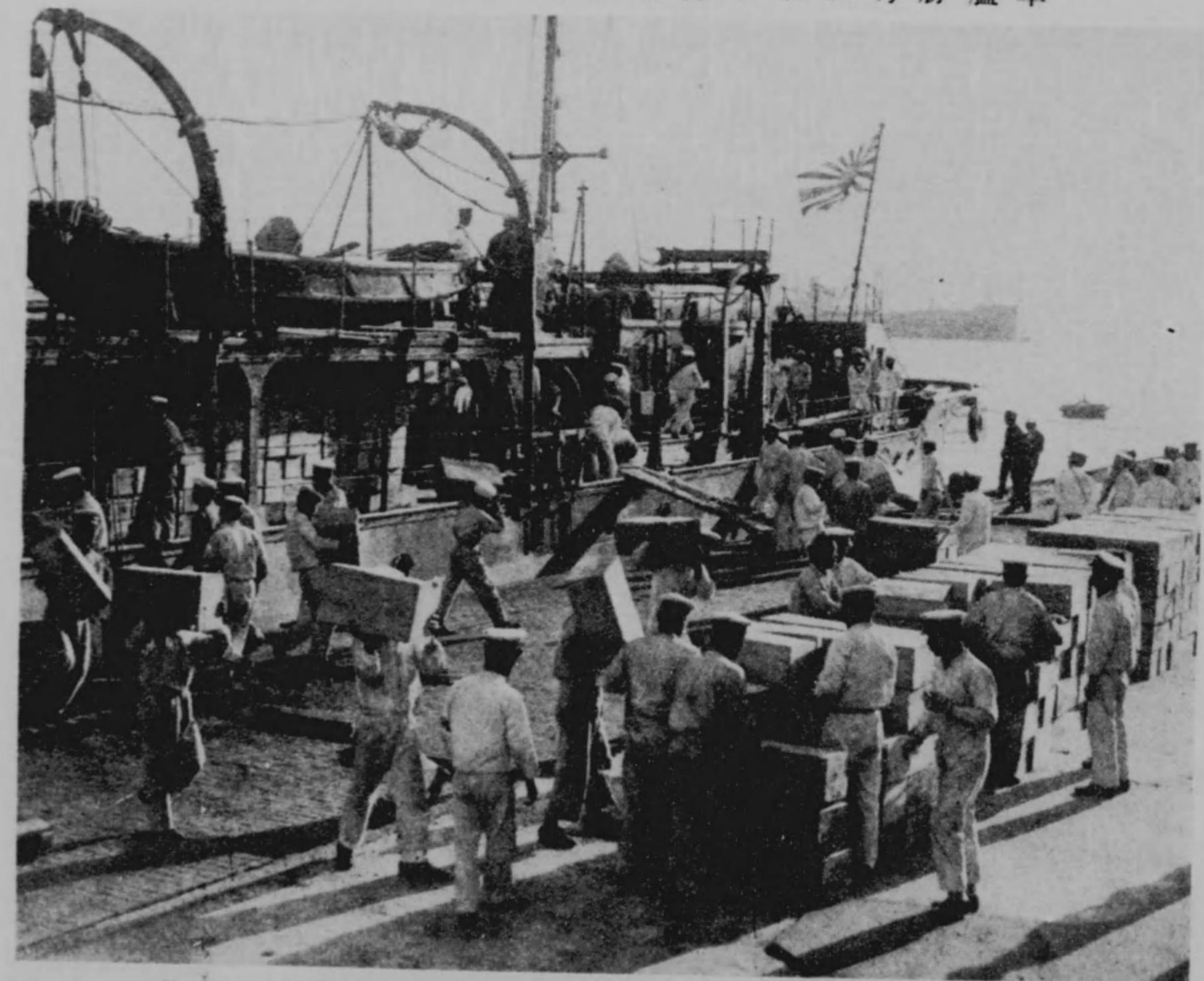
Youths are full of vim and vigor for the reconstruction of their demolished school building.

場動運南園子甲たし化と湖

The spacious south
Koshien stadium,
midway between
Osaka and Kobe,
was converted into
a lake of muddy
water.



着到に阪大品恤救の軍海りよに力勝艦軍

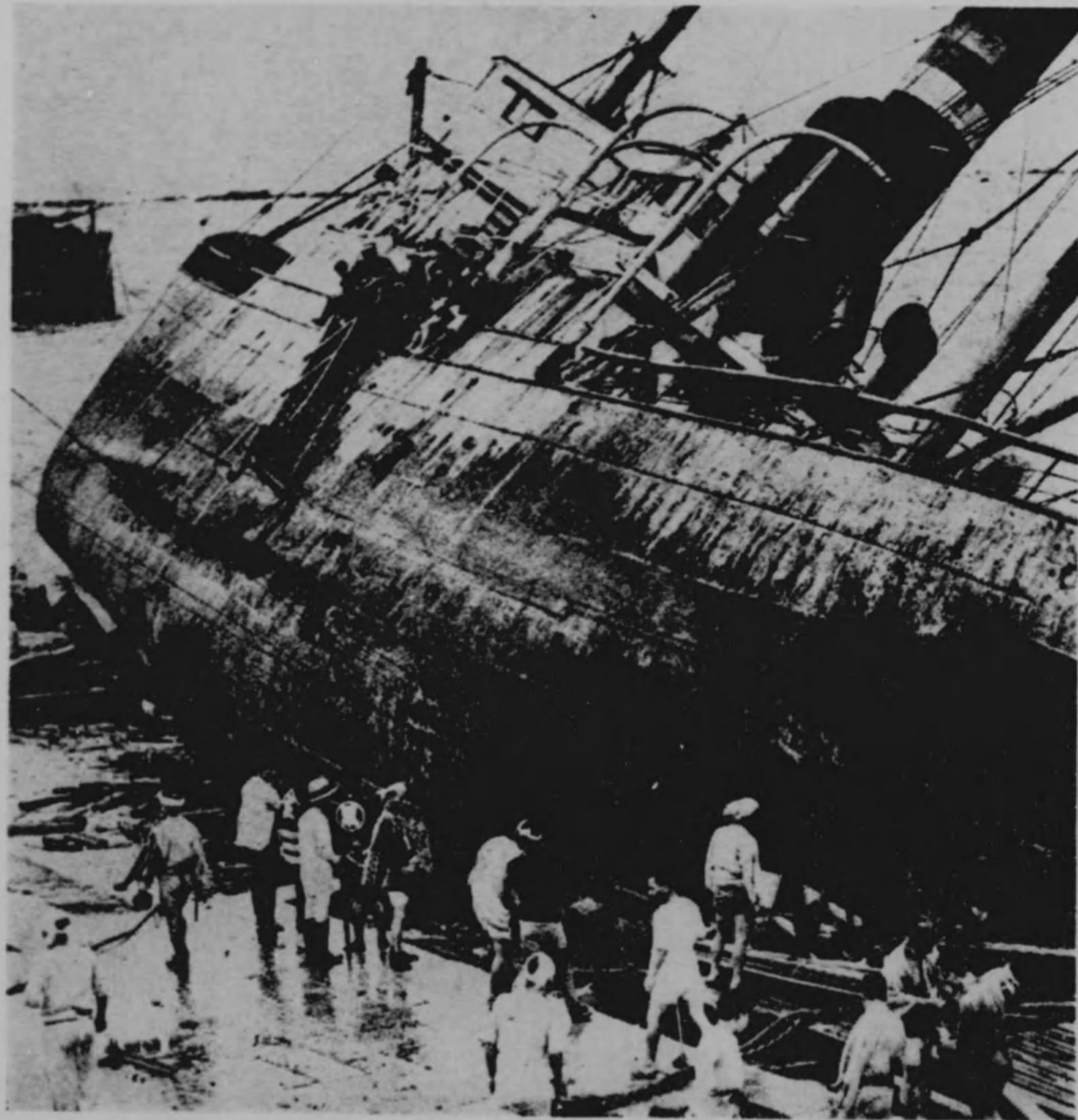


Destroyer Shoriki arrive I Osaka harbour to rescue sufferers.



港阪大下殿宮邇久東
察視御狀慘の近附

H. I. H. Lt.-Gen. Prince Higashi-Kuni, Commander of the 4th Division, Osaka, inspecting the disastated region in the Osaka harbor section.



岸に打上げられた大汽船

A vessel which blown up on land.

壊倒の校學小一第口守



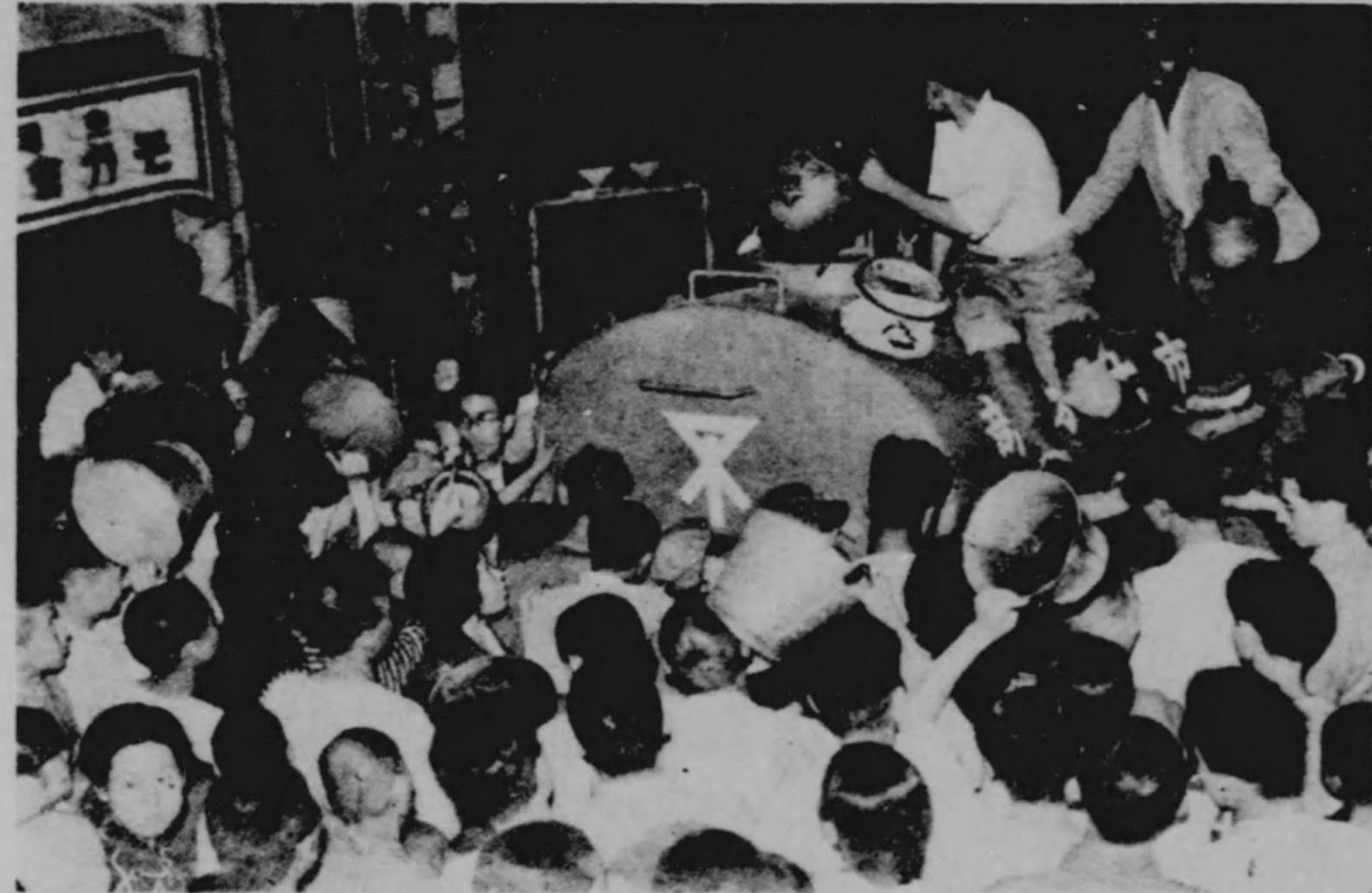
The ruins of the Moriguchi First Primary school.

者災罹るす活生に上屋間日數



Sufferes who have no dwellings are living on the roof for many days.

撤水車で飲料水を市民に供給



水道の断水に付配水部隊の活動

A group of ex-service men are suppling water to the sufferers on emergency duty.

躍活の社聞新日朝阪大

躍活の社聞新日每阪大



Relief work speeded up in Osaka
The relief corps of the Osaka
Asahi at work.



The relief corps of the Osaka
Mainichi is providing
food for sufferers.

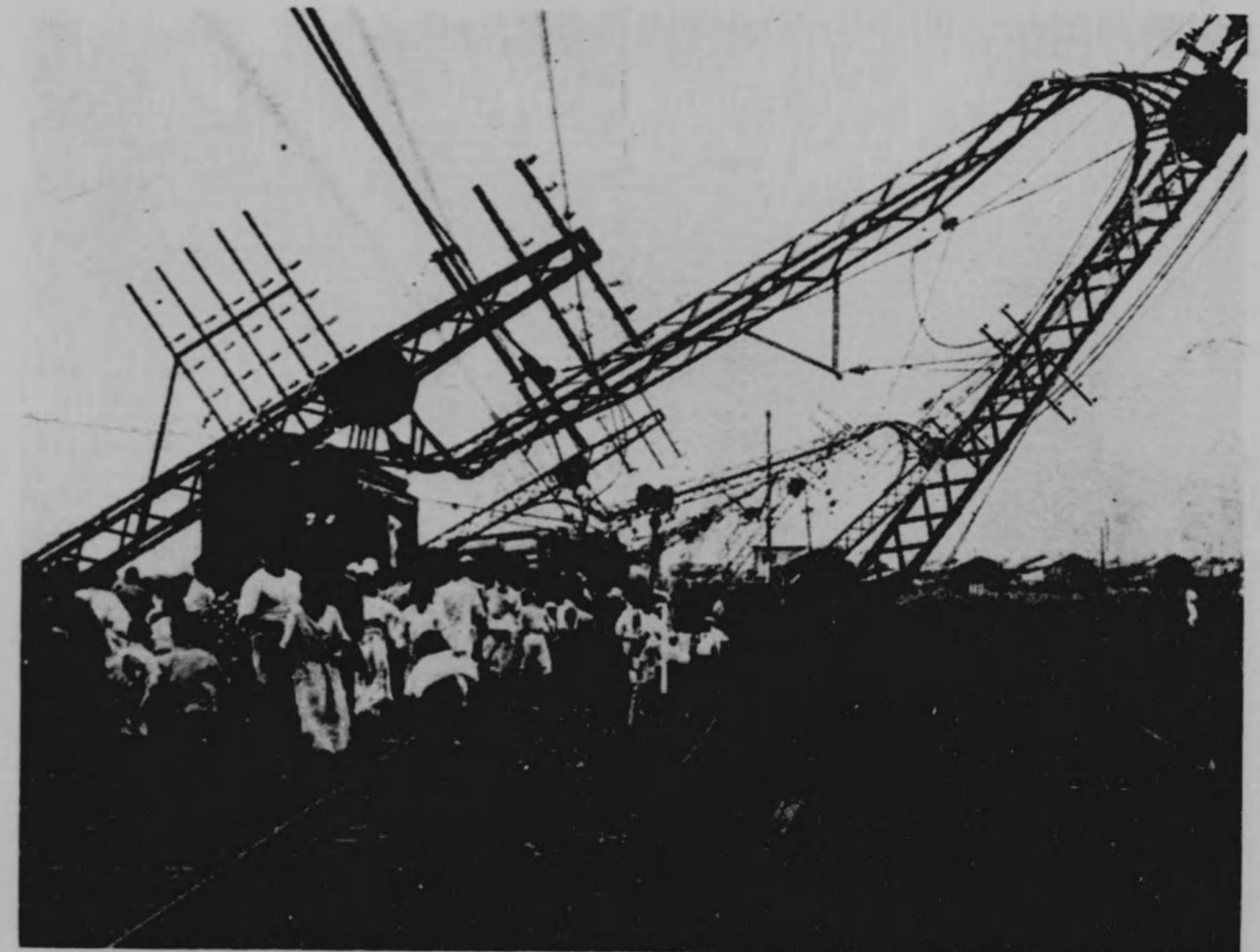
Upper--Soldiers stand
on guard all night.

× × ×

Lower--Damaged high
tension towers of the
Daiki tramway Company
by gale.



軍隊の非常時警戒



線沿社会鐵電軌大たれさ壊破を塔流電壓高



大阪中本第二小學校にて倒壊校舎の下敷
ごなつた生徒を掘出しつゝある軍隊

Troops searching for bodies of children among
debris of the wrecked Nakamoto
Daini primary school, Osaka.



今般の災害につき軍隊、在郷軍人團、消
防隊、青年團等の活動は眞に目覚ましき
ものありしが、大日本國防婦人會も大に
活動して炊出しその他救護に努力した。

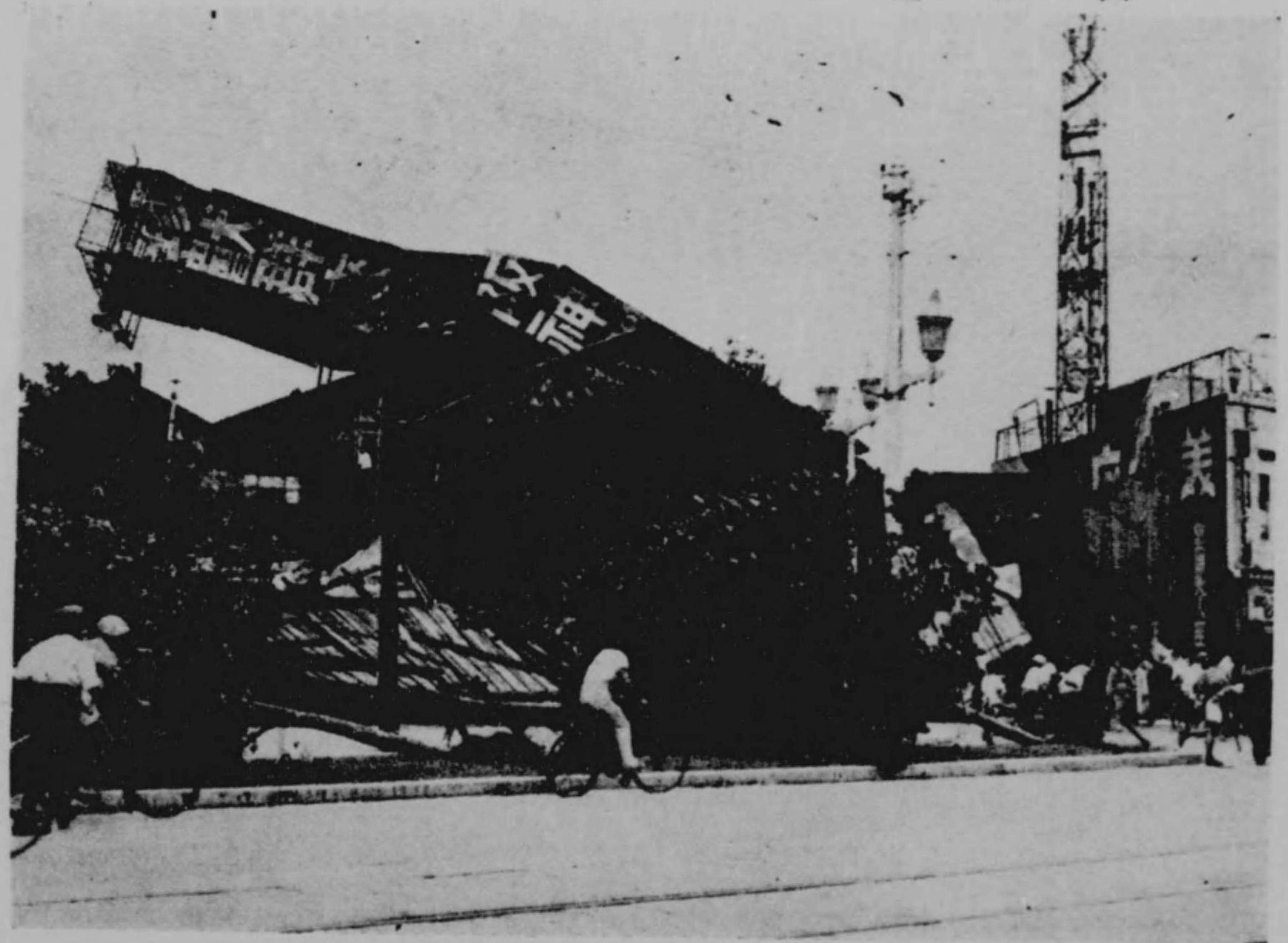
The members of the Dai-Nippon Kokubo Fujinkwai
displayed great activity in giving succor to the
sufferers from the typhoon disaster.

達親く焼て天露を體死の名七十二生學死慘の校學小部岸



Parents are seen performing the painful duty of cremating in the open the
remains of their 27 children who were killed when the Kishibe
primary School collapsed during the typhoon.

狀 慘 の 近 附 ル ビ 堂 阪 大



A terrible scene near Do-buil., Osaka.

江州三井寺境内に於ける老杉の倒壊



Towering Cryptomeria Trees Uprooted in the Precincts of Miidera Temple, Shiga Prefecture.

大阪の紙表誌本くし著も害損の閣佛社神にてに風颯の畿近
るあて状惨の壊倒殿

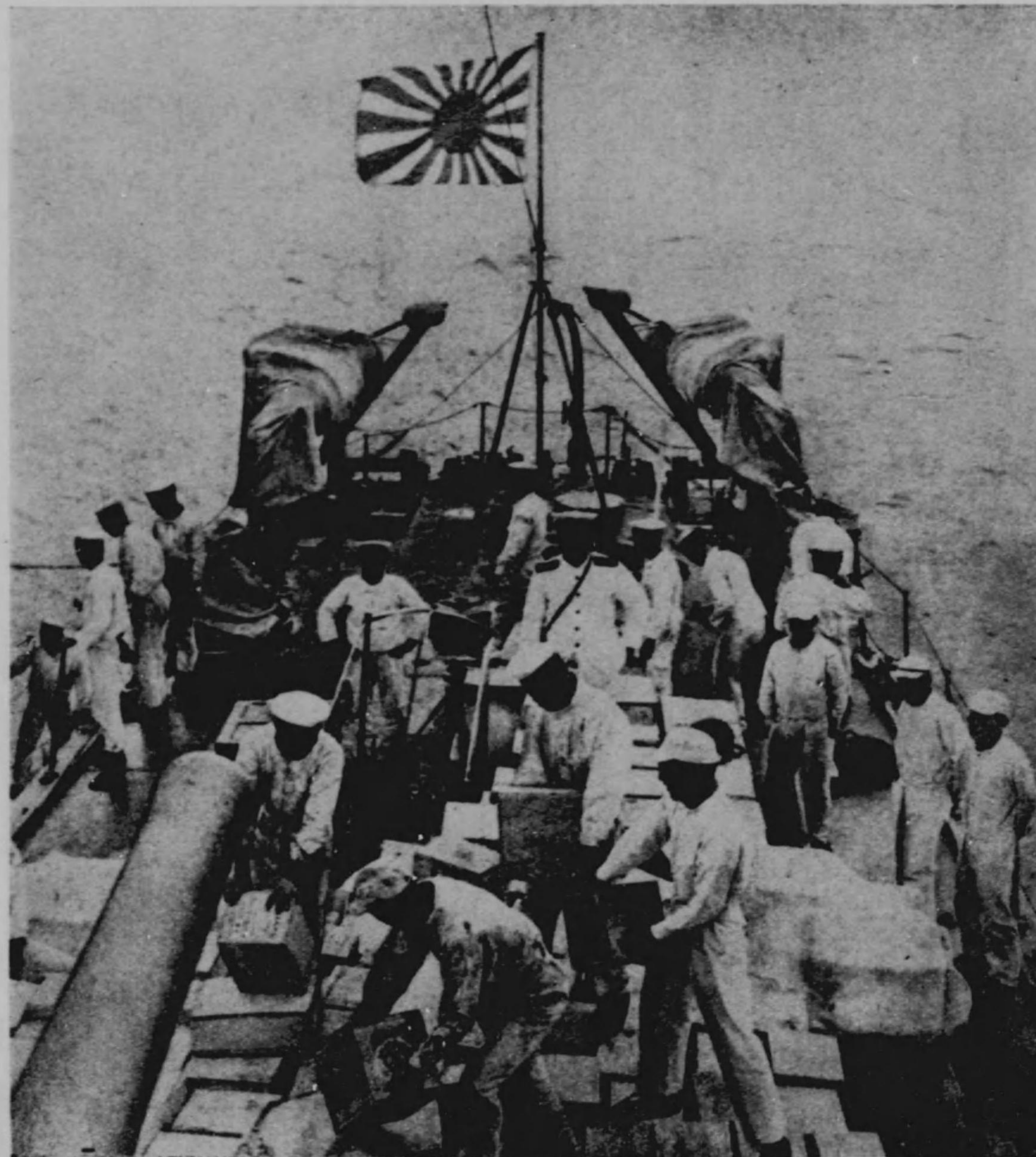
Cover shows: The Ruins of the Gogatsulen Hall of the Sumiyoshi Shrine, Osaka.

“Pictorial News of the Typhoon Disaster”

Published by
The Osaka Shuppan-sha
M. Shimaya
23 Uyehommachi Nichome, Minamiku,
Osaka, Japan.
Phone: Higashi 2975 and 5471
B. S. T. A. Osaka No. 58267

昭和九年十月廿五日印刷
昭和九年十一月一日發行
大風水害畫報
大阪市南區上本町二丁目
編輯兼
發行人 島屋政一
大阪市北區堂島上三丁目
印刷人 谷口春雄
發行所 大阪出版社
大阪市南區上本町二丁目
電話長東二九七五番
五四七一番
振替大阪五八二六七番

驅逐艦若竹にて救恤品を大阪へ



Immediate Relief

Some of the boxes containing supplies brought by the torpedo-destroyer Wakatake, which docked in Osaka port.



大阪出版社發行