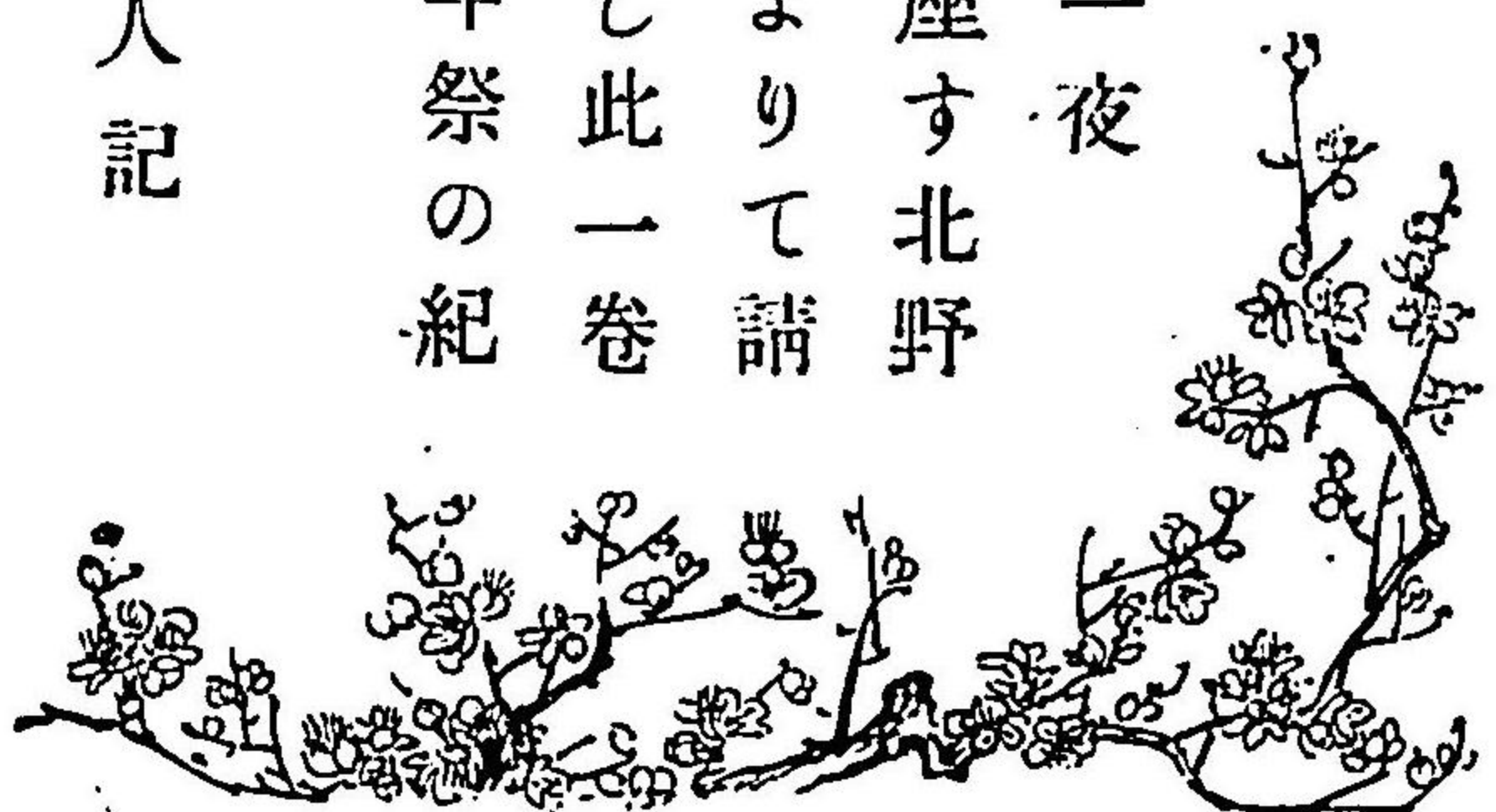




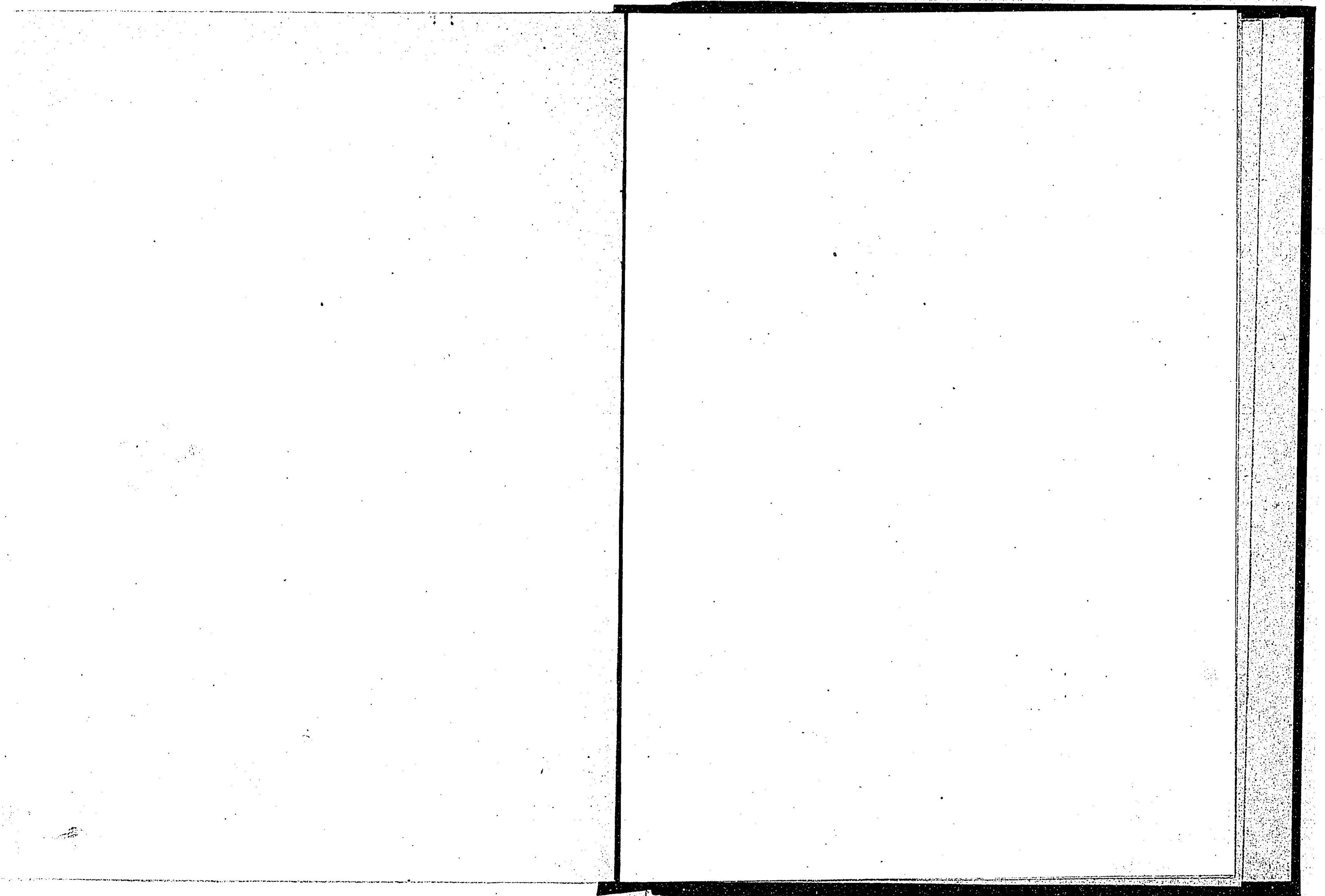
天満つる神と稱へて仰く菅原の大  
 臣かく作ましてより茲に一千年全  
 國到處に大社小祠の數多き中にも一夜  
 の松の奇き跡を今にこゝめて鎮り座す北野  
 の宮にては萬燈會をそ行はれけるよりて請  
 ふて古繪馬の優れたるものを撮影し此一卷  
 をなせしも再ひ遇ふへからさる千年祭の紀  
 念にとてこそ

壬寅の五月

芸艸堂主人記

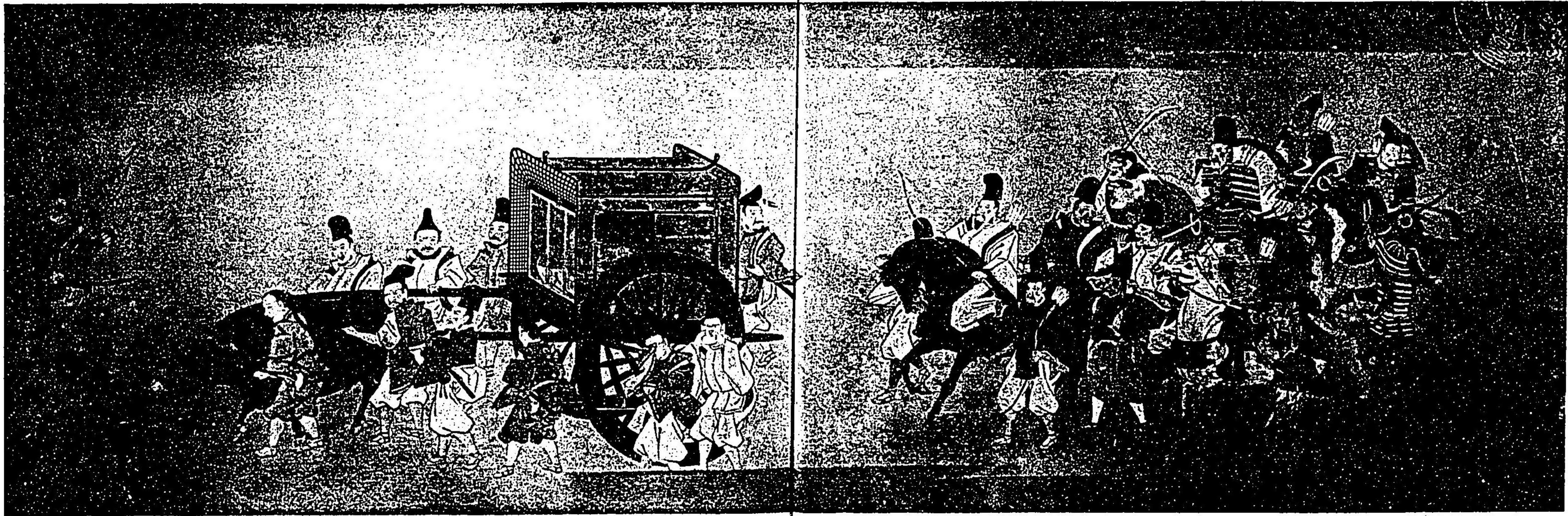






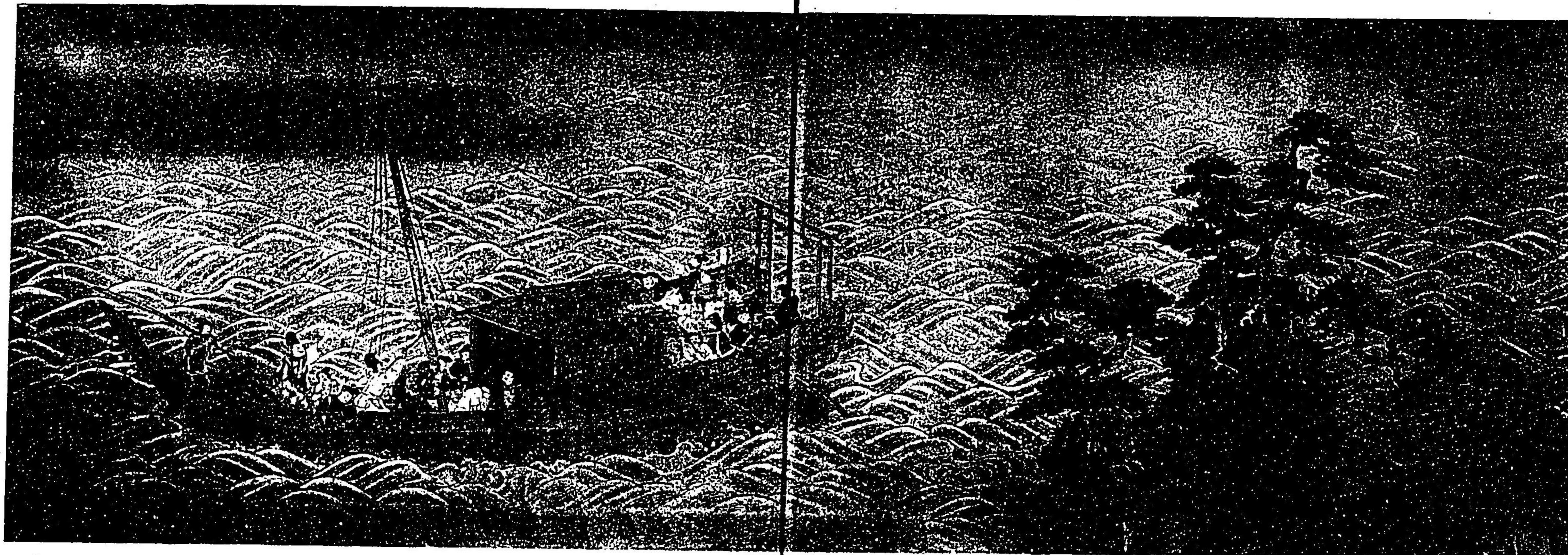


83-165



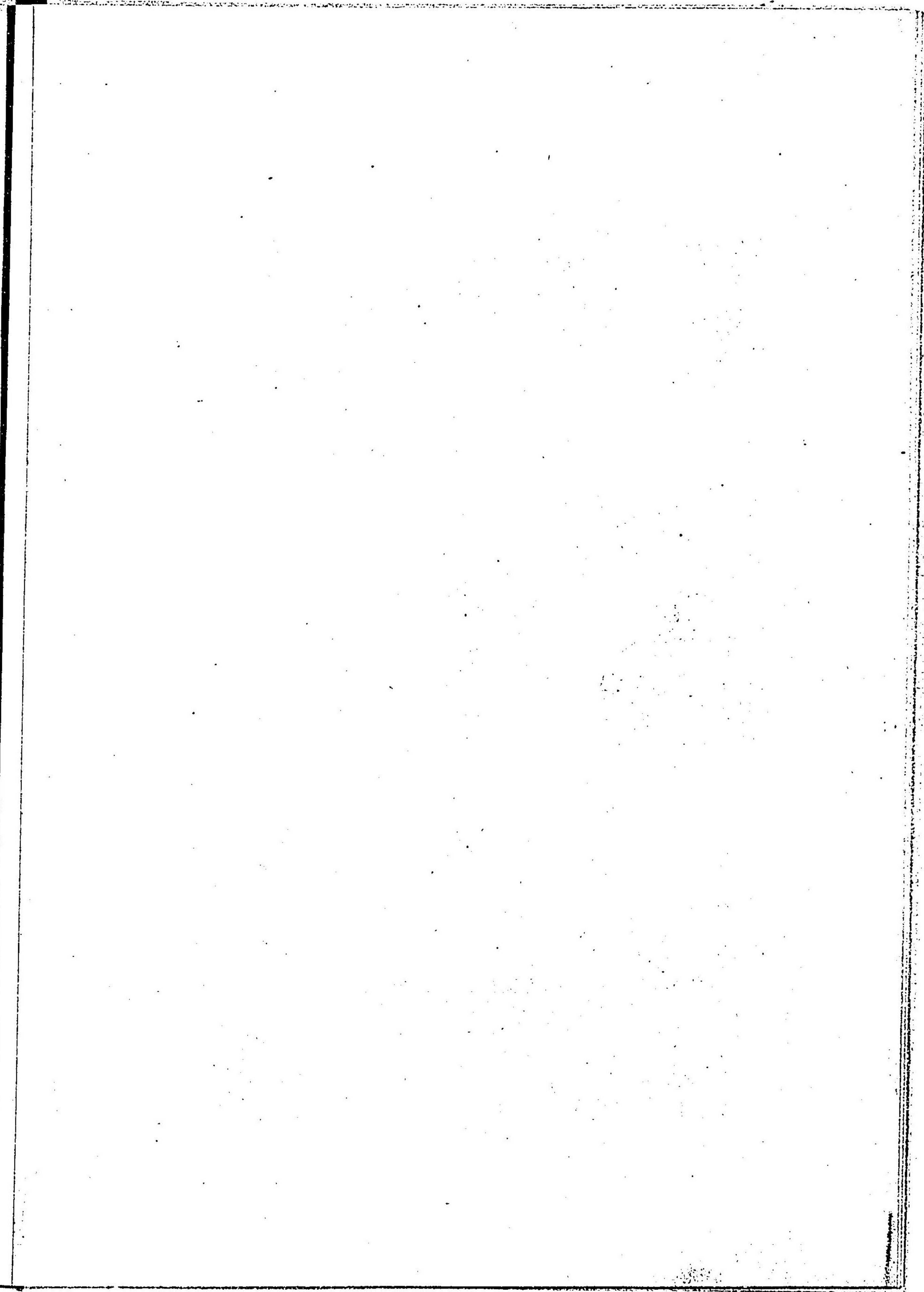
一其内之卷繪起銀野北 筆起光佐土



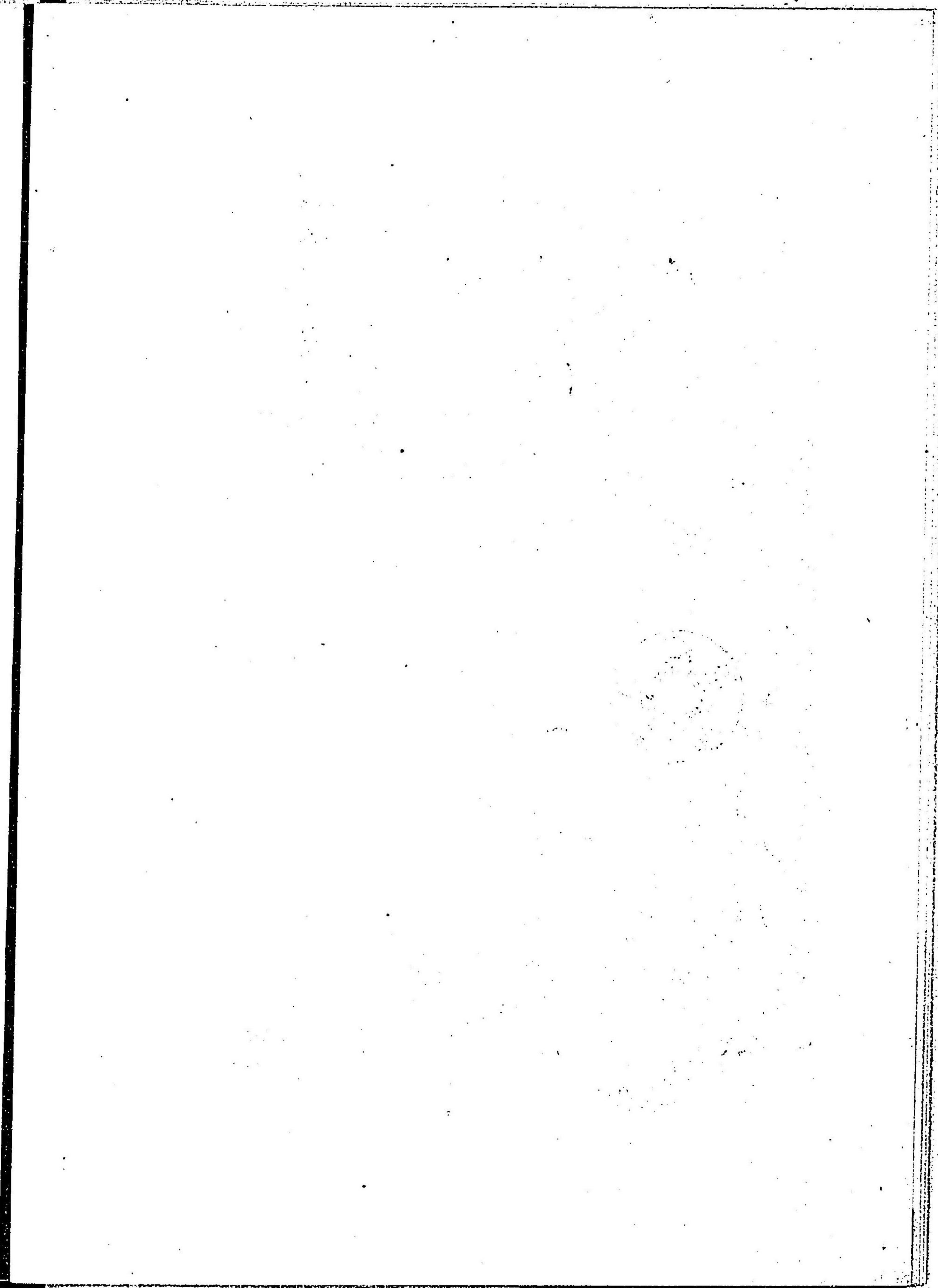
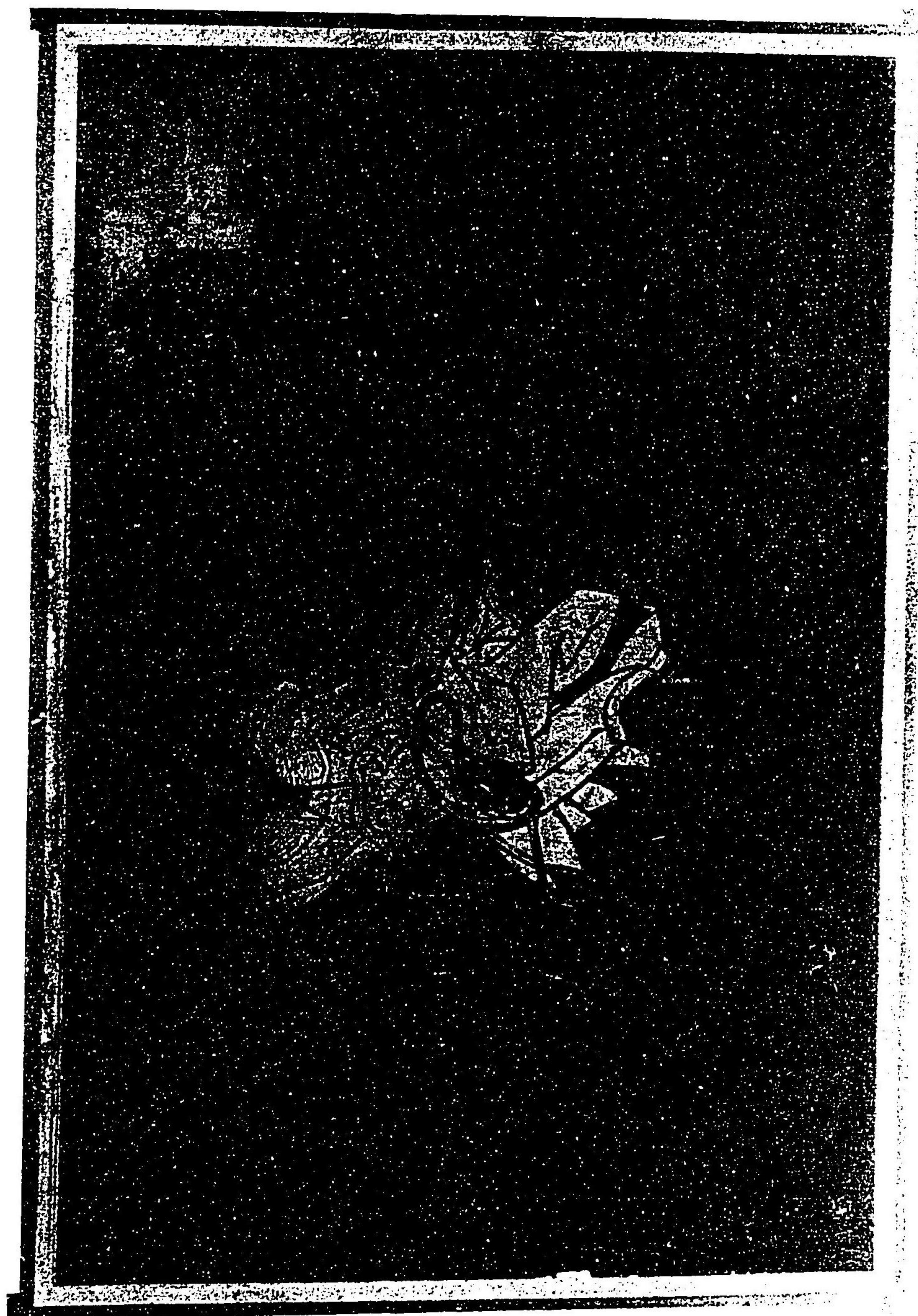


二其内之卷繪起錄野北 筆起光佐土

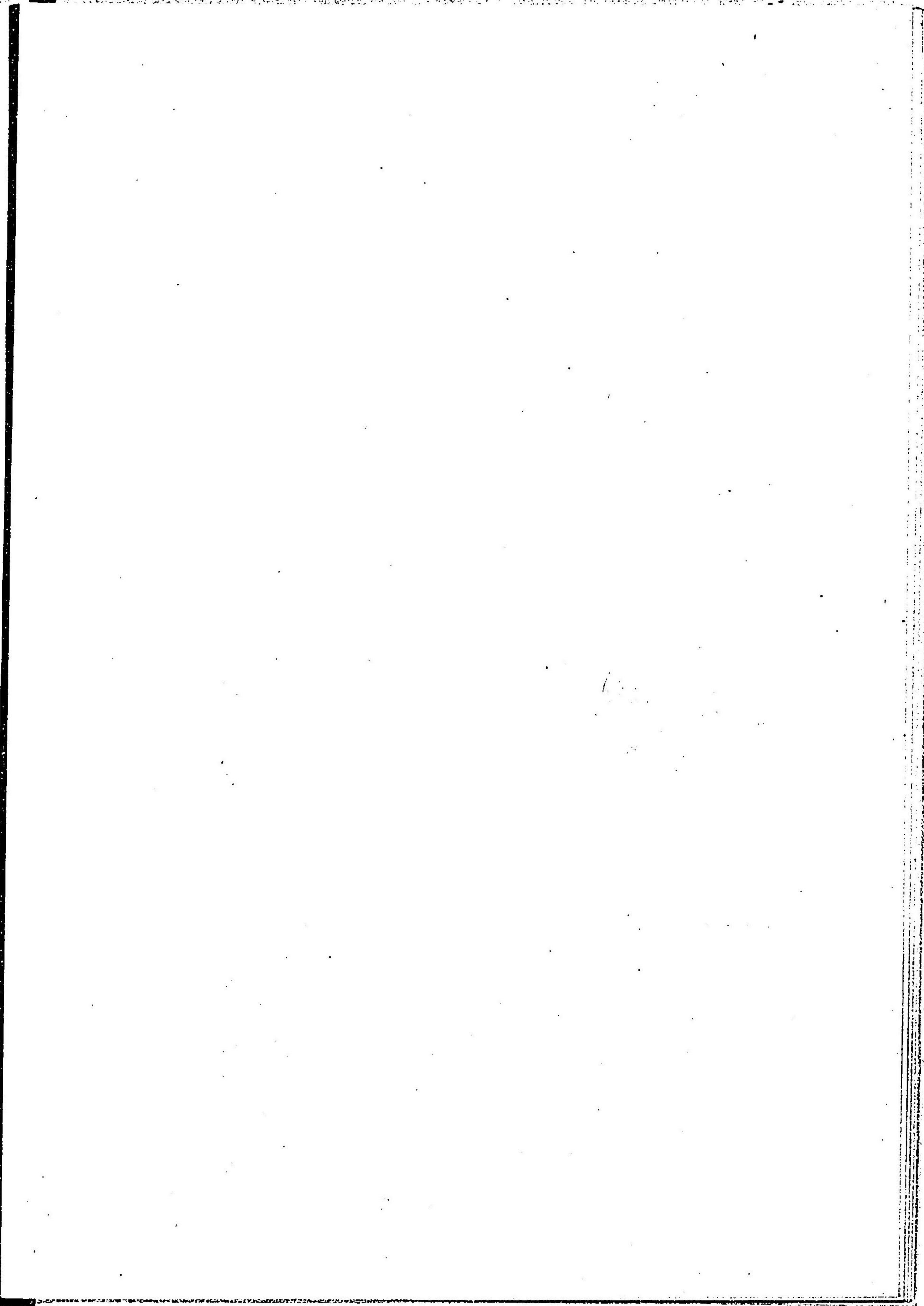




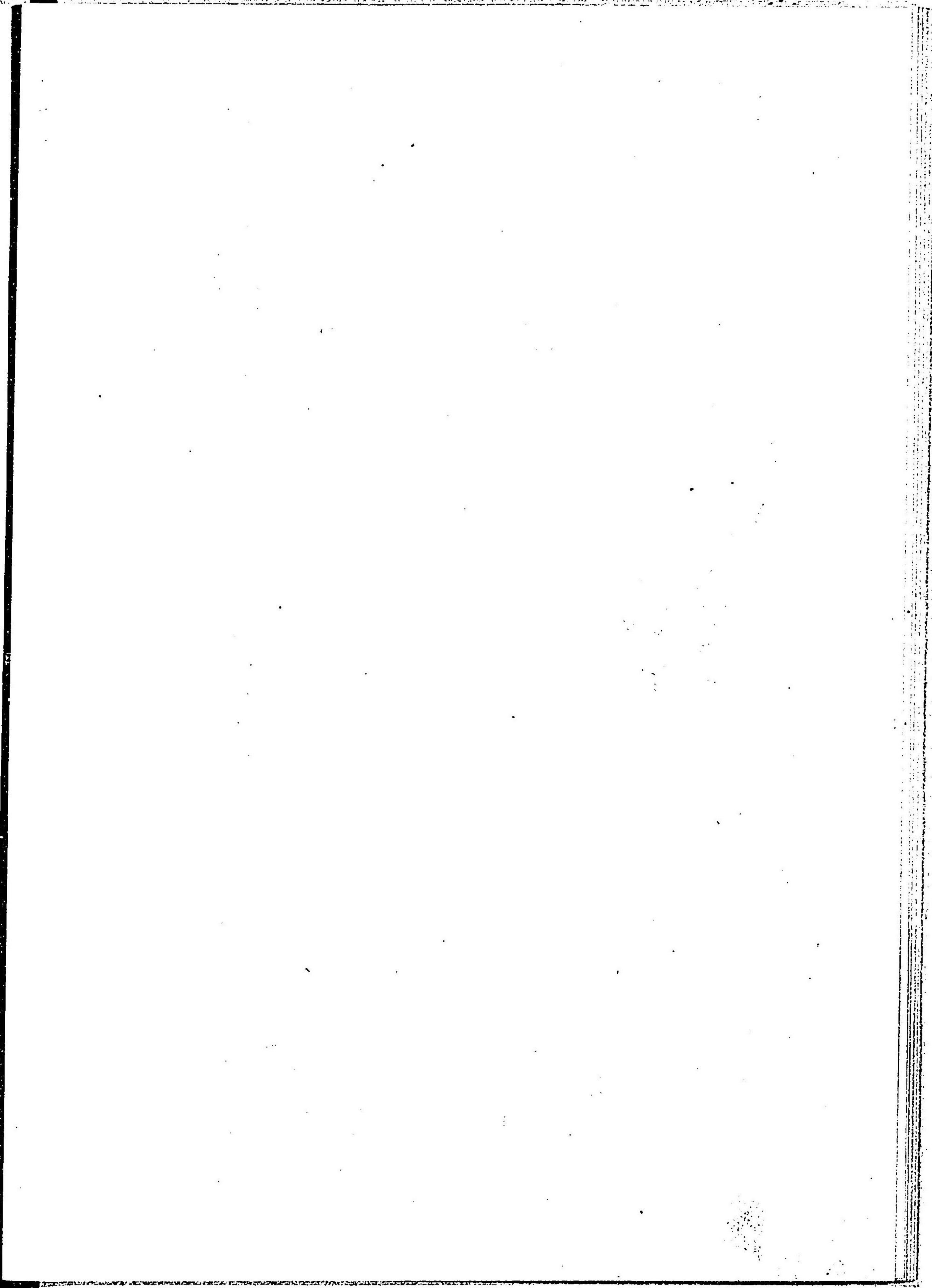
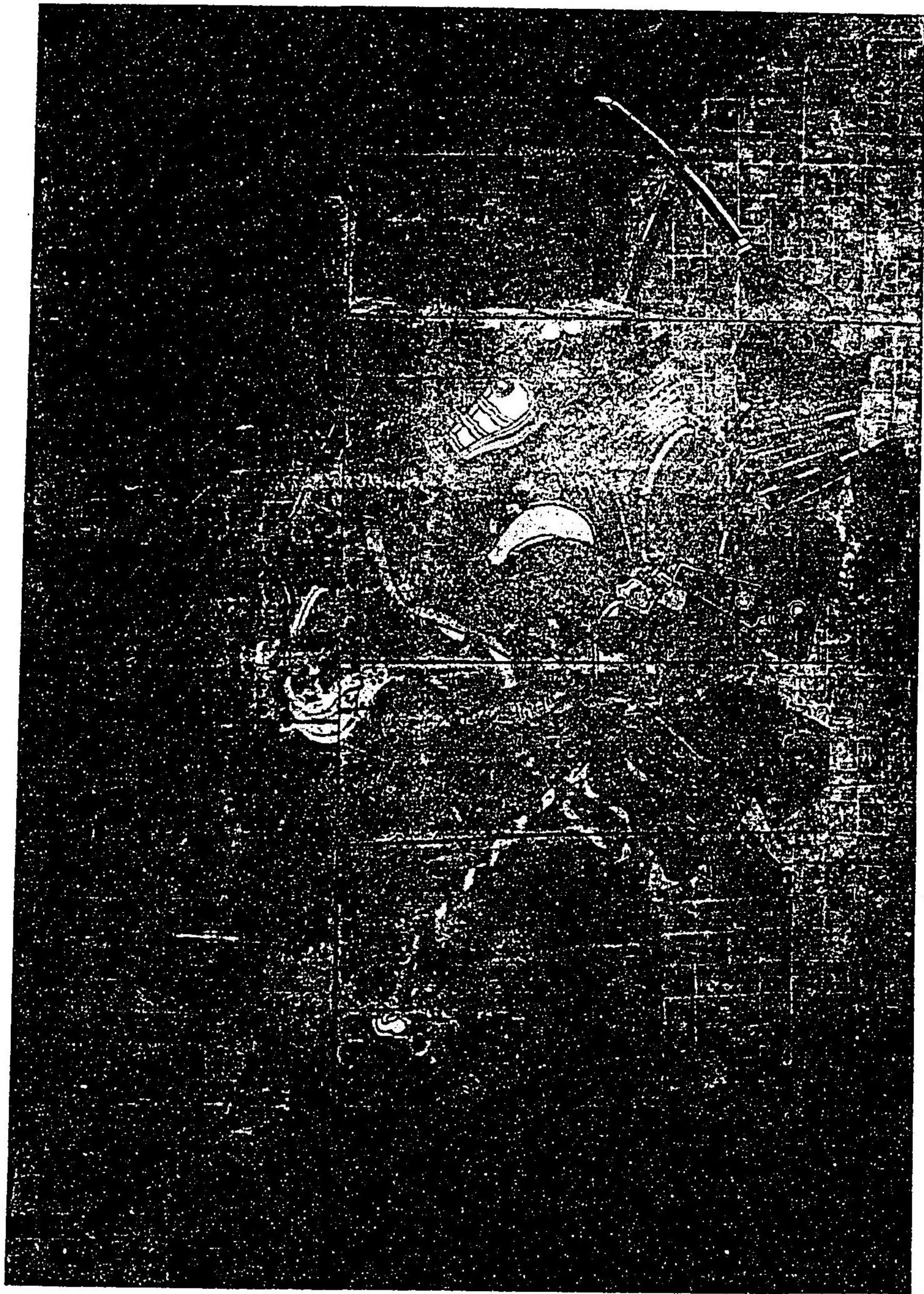




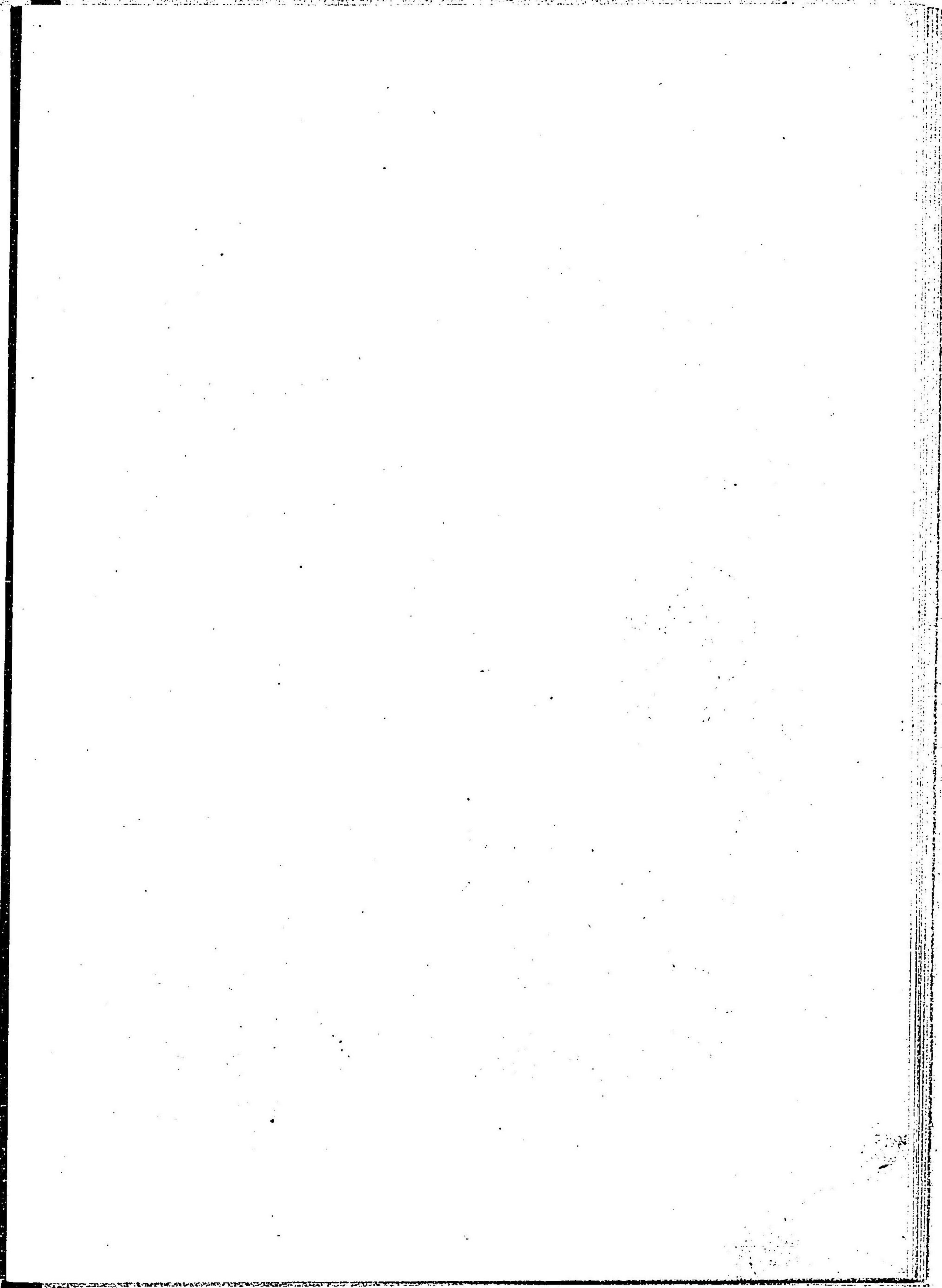
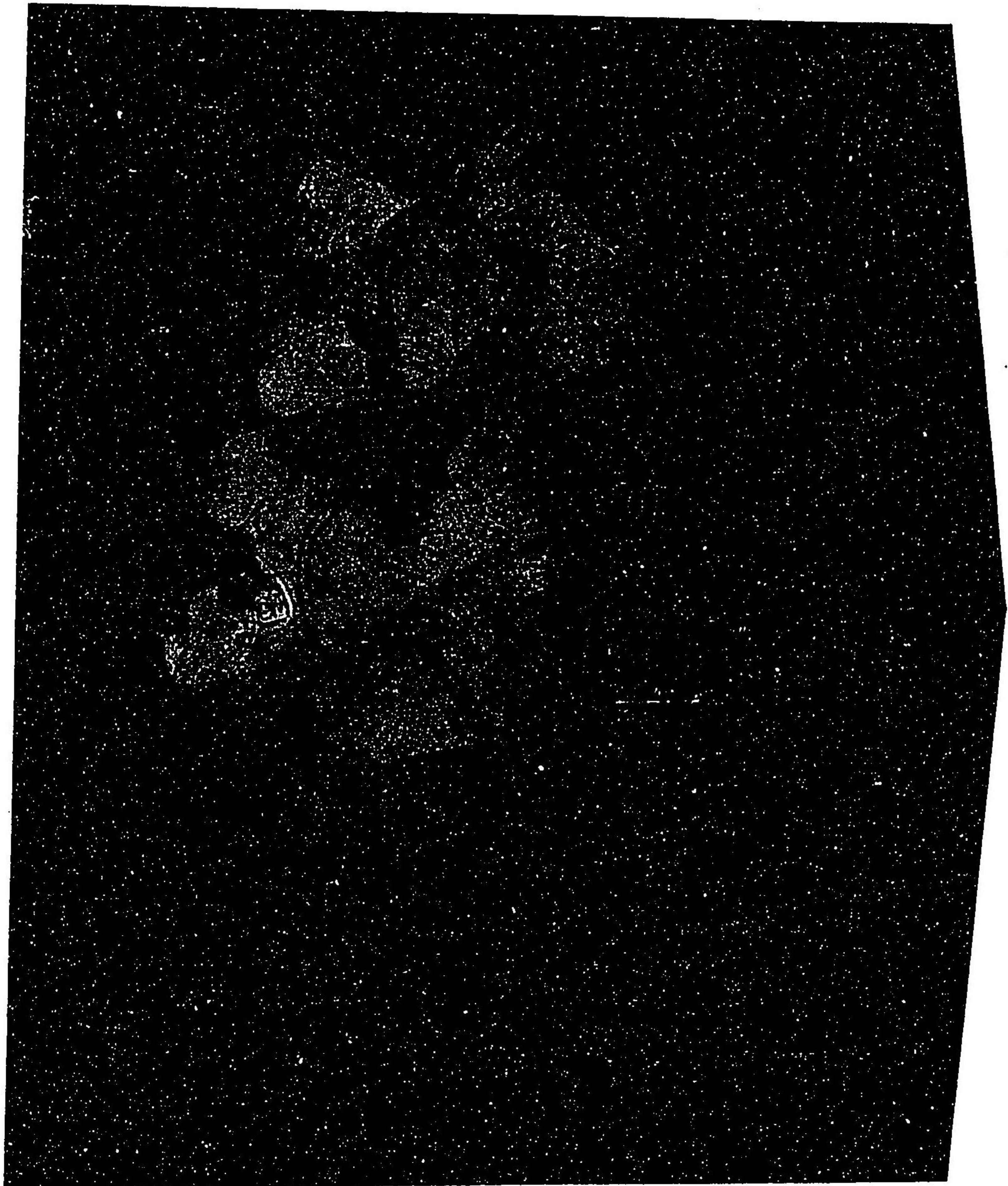




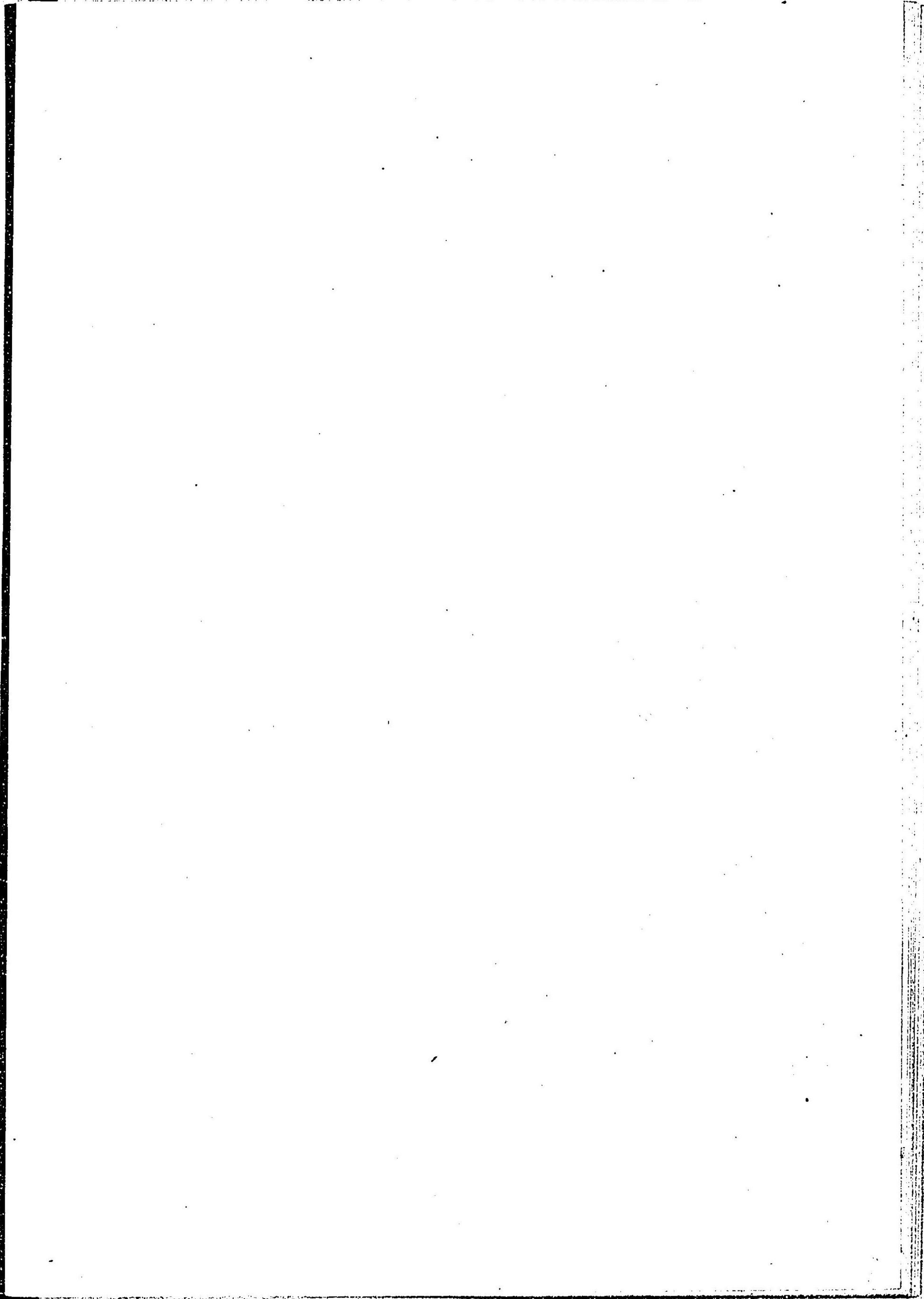
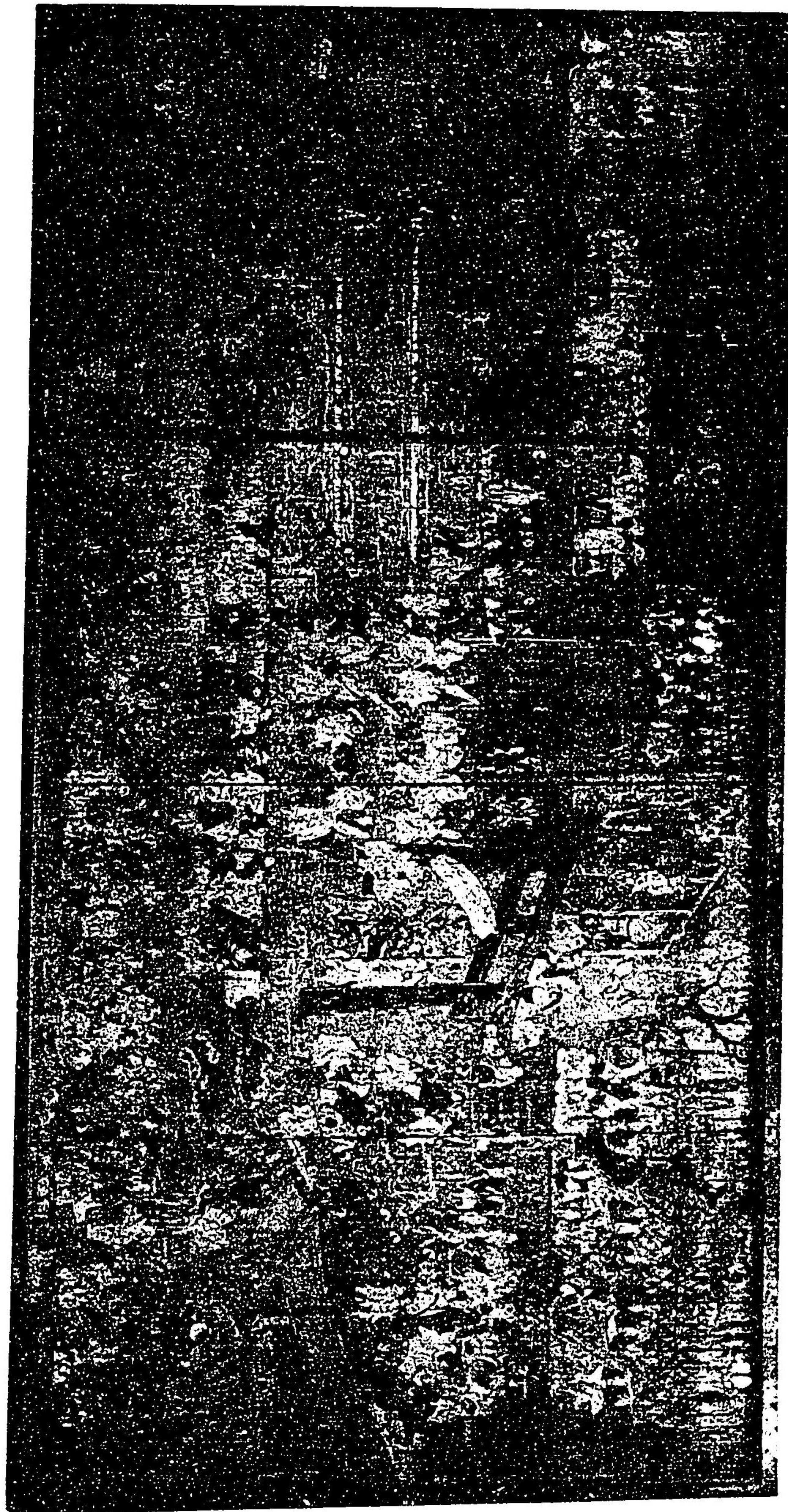








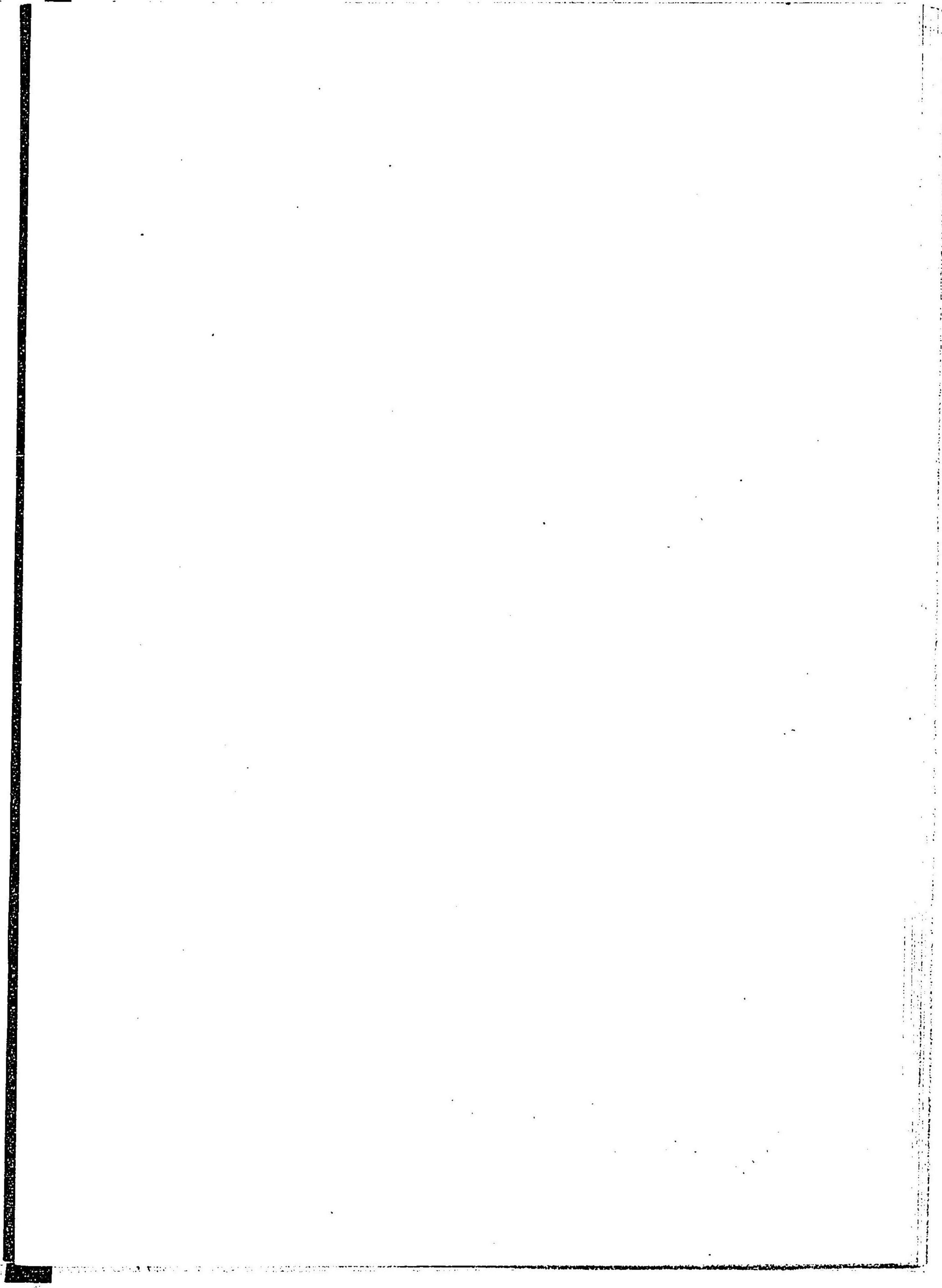
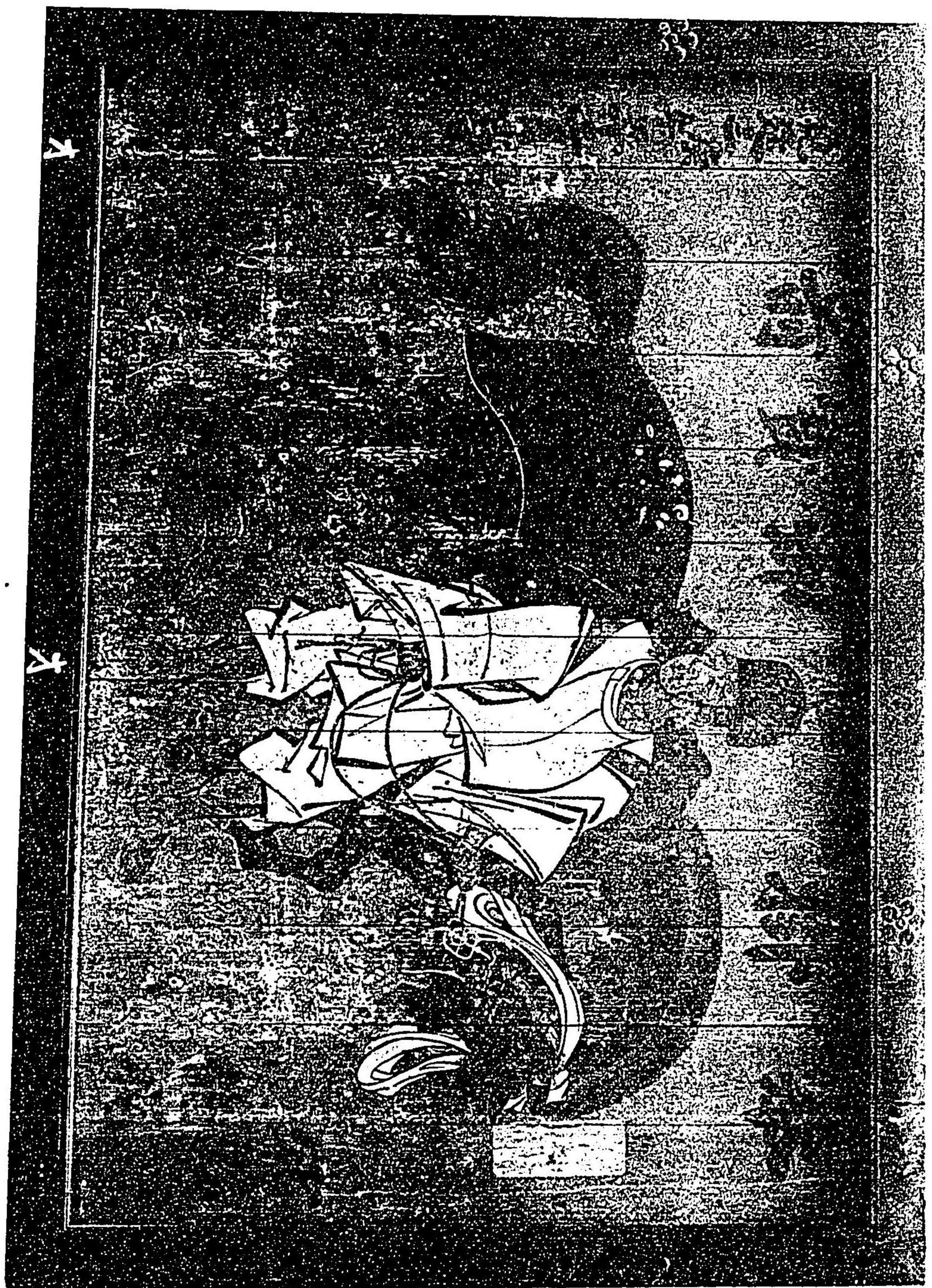




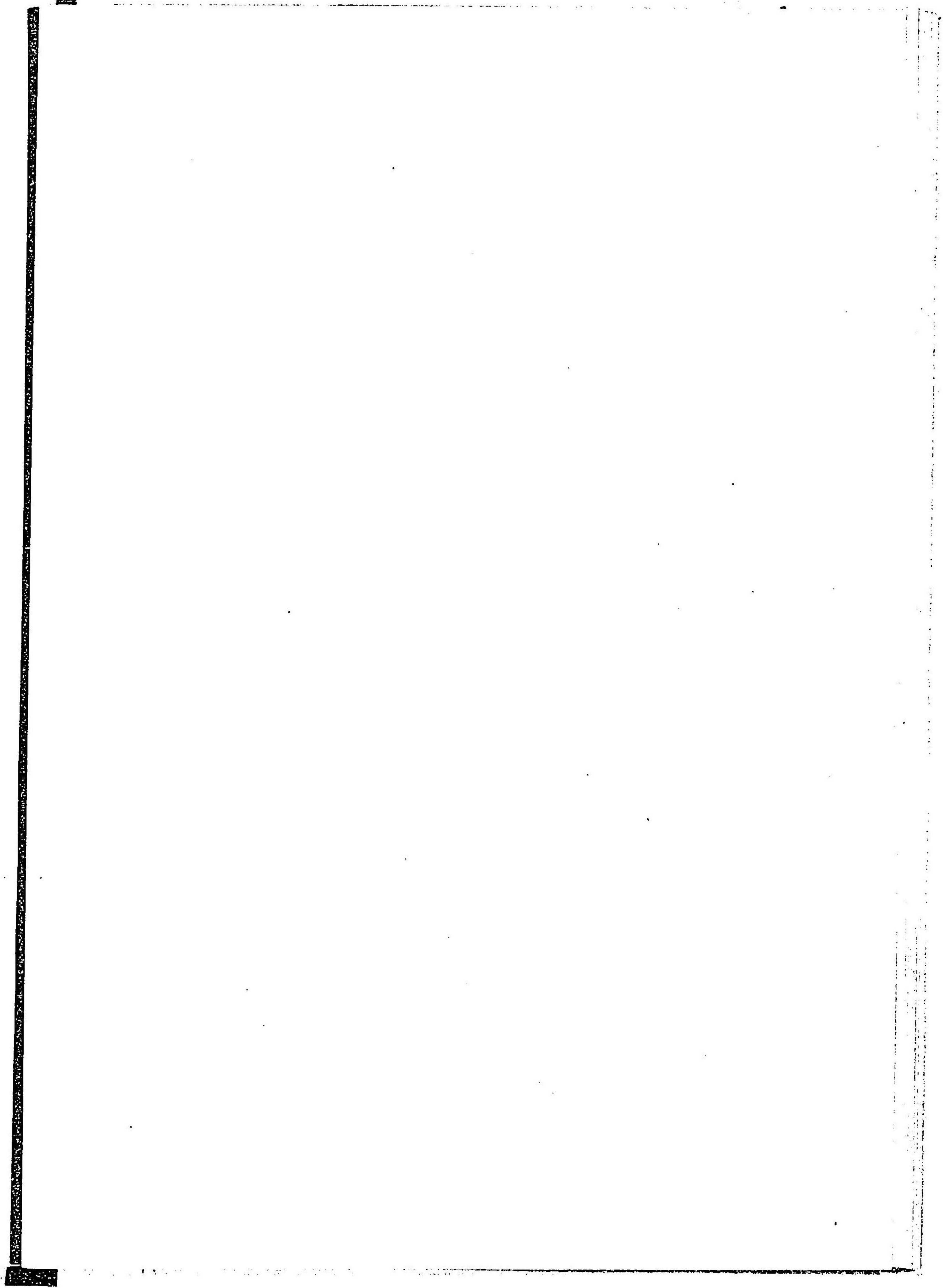
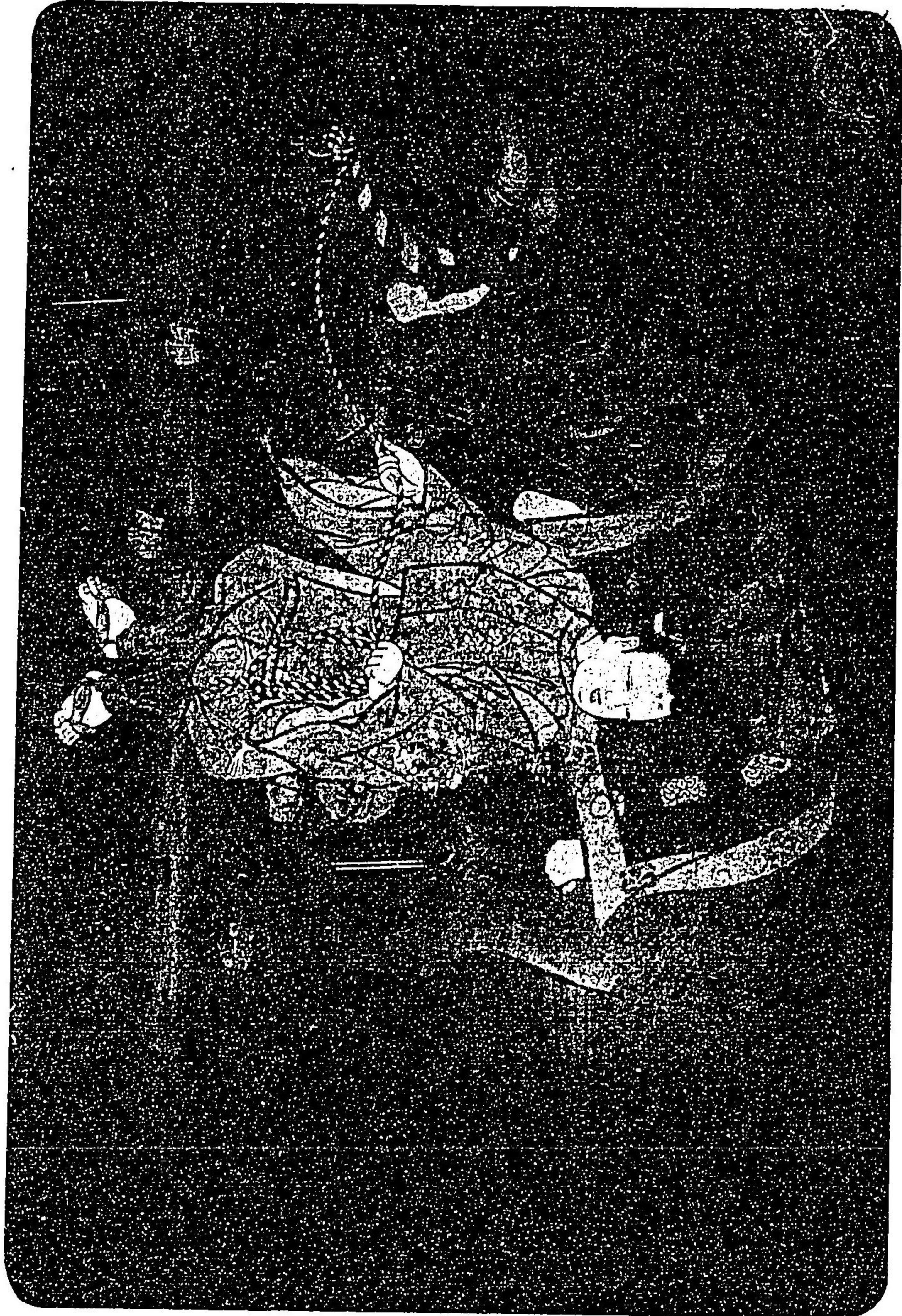




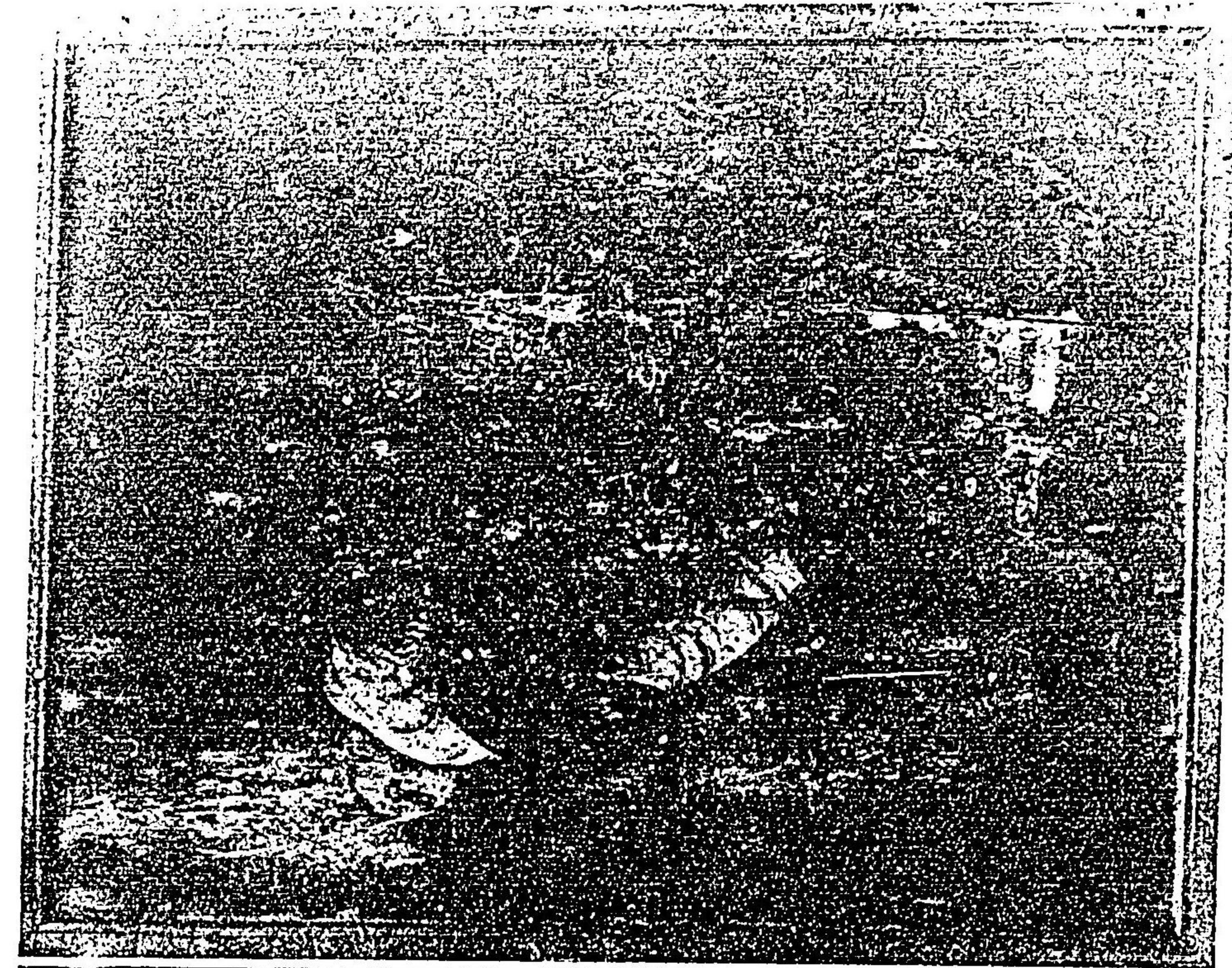








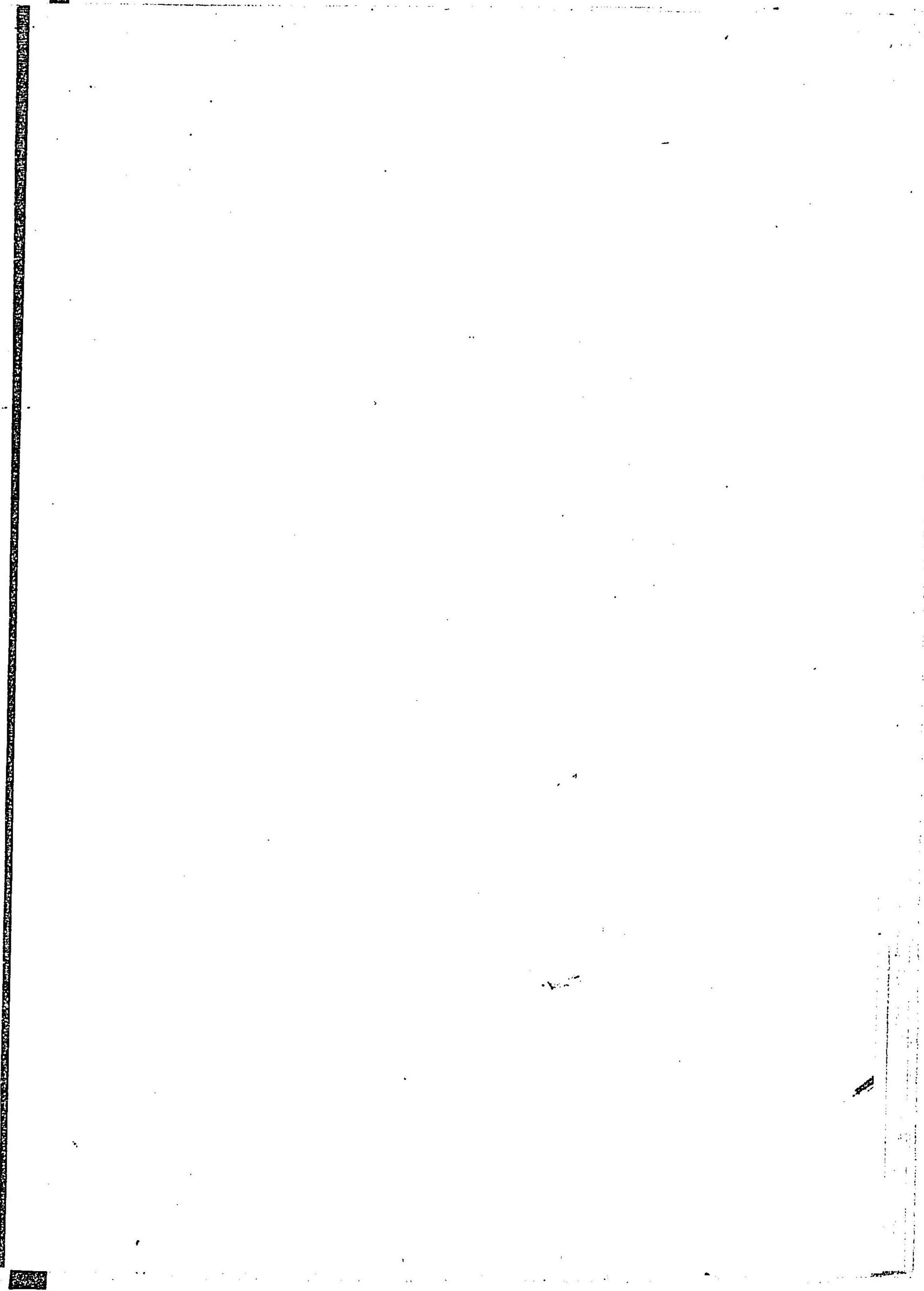
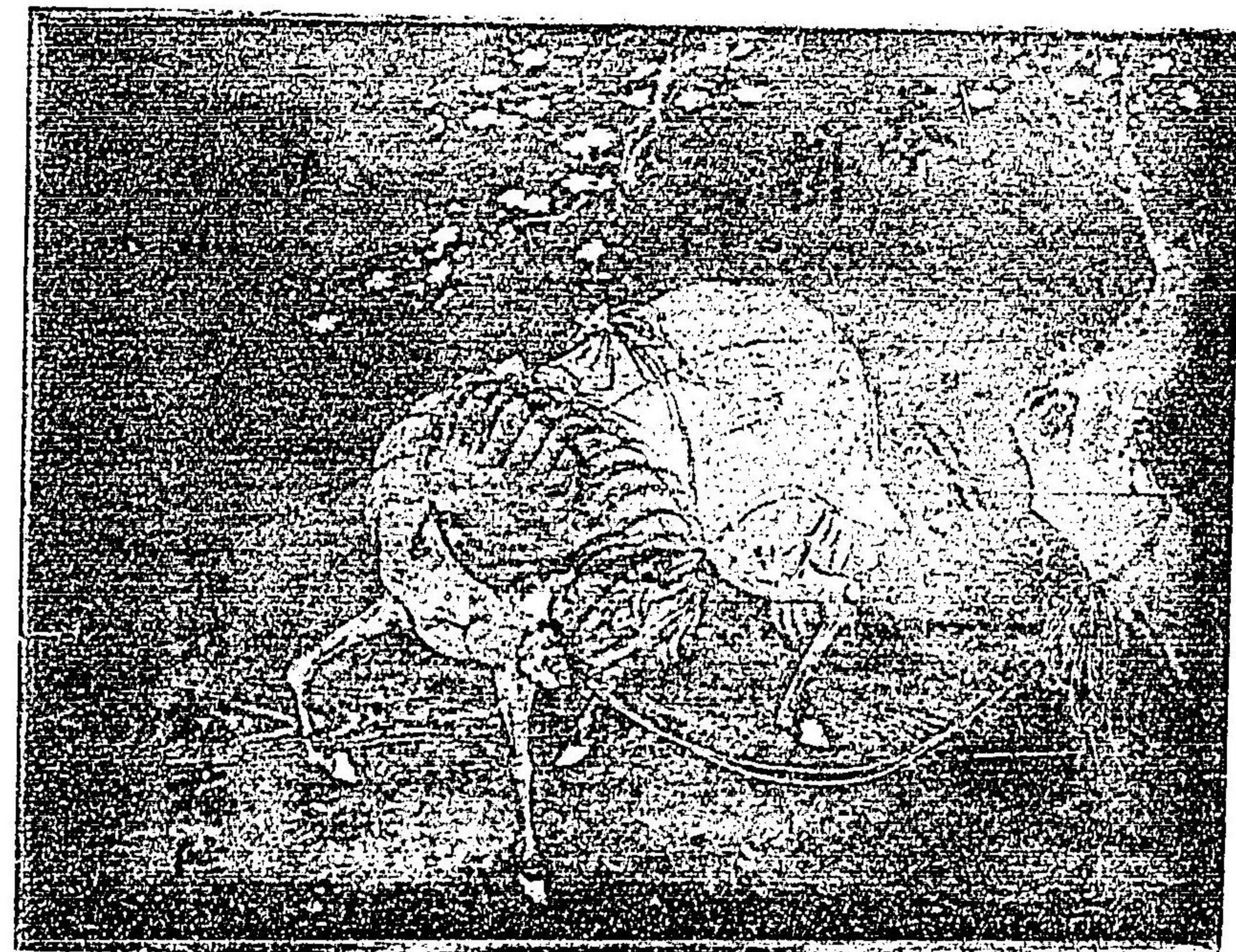














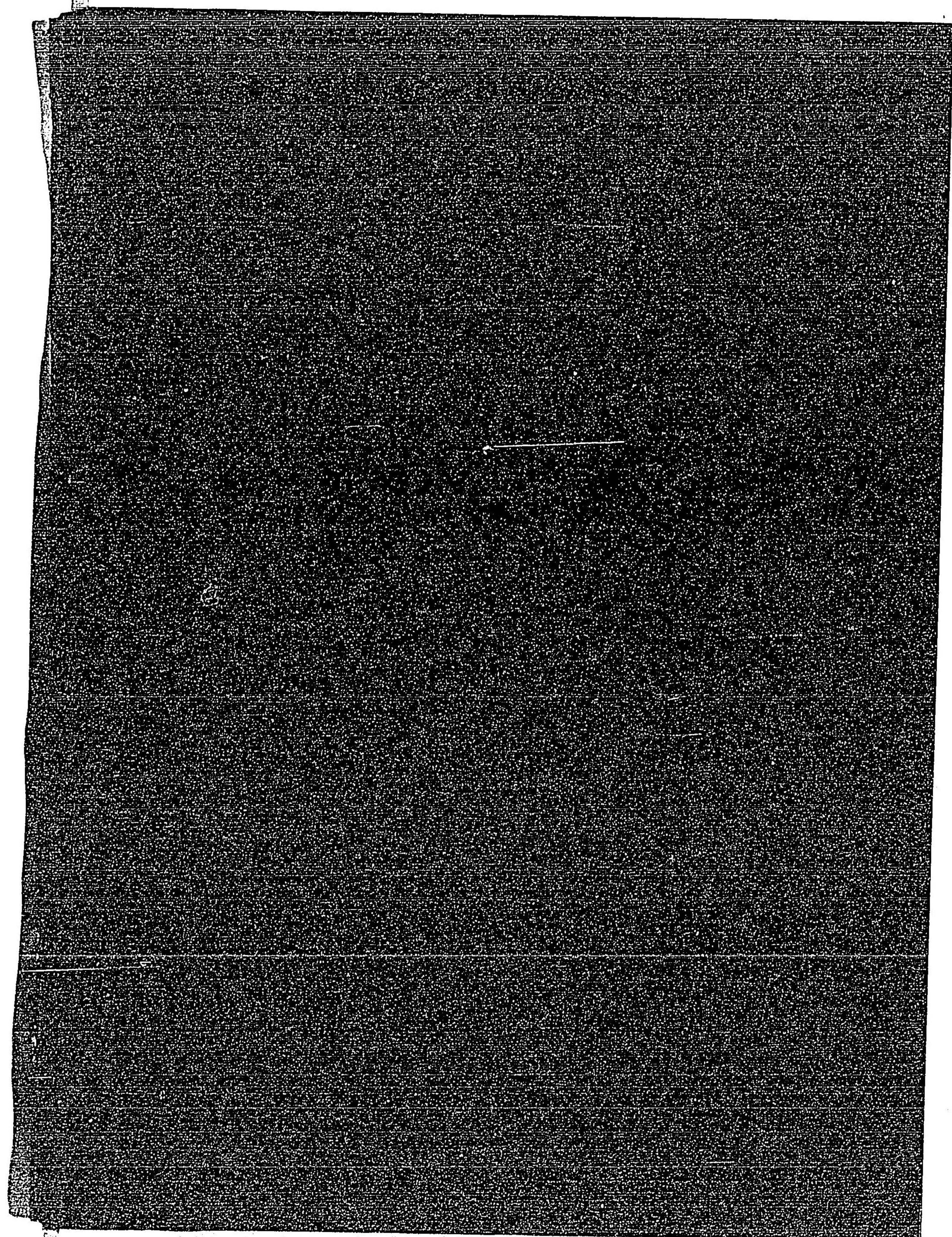
9/55



83

165







83  
165

013932-000-6

83-165

北野 繪馬(菅公千年祭記念)

山田 直三郎 (芸艸堂) / 記

M35

ABB-0173





36.4.24



