



GLENDAL—
The CITY of HOMES

THE GLENDAL EVENING NEWS

Daily Except Sunday DEVOTED TO THE INTERESTS OF GLENDAL

GLENDAL—
The CITY of HOMES

VOL. XV

GLENDAL, (LOS ANGELES POSTOFFICE), LOS ANGELES COUNTY, CAL., FRIDAY, MAY 28, 1920

228

PATRIOTIC BANQUET

BROTHERHOOD OF CENTRAL M. E. CHURCH ENJOYS DELICIOUS DINNER AND FINE SPEECHES

An inspiration to all present was the Brotherhood Banquet enjoyed at the Central Avenue Methodist Church by the members and guests Thursday evening. It was a patriotic affair which took place in the social hall of the church where the walls were hung with flags, large and small, red, white and blue flowers decorating the tables, and patriotic emblems emblazoning the napkins.

A delicious meal was prepared and served by members of the Ladies' Aid under the chairmanship of Mrs. P. O. Lucas.

Following the dinner was a program of music and addresses. This included the singing of "Marching Through Georgia" by the company with Mrs. F. Marlon Smith at the piano and an orchestral accompaniment furnished by Messrs. Prouty (trombone); W. F. Shinner and Dr. P. O. Lucas (cornets); Roger Baker (violin). This song was followed by "Battle Cry of Freedom" with similar accompaniment. The men's quartette consisting of Rev. F. Marlon Smith, Dr. P. O. Lucas, Will Marple and W. F. Shinner, sang "The Mill Wheel."

Mr. Shinner, who is the president of the Brotherhood, made an excellent address. (Continued on Page 3)

STAG DINNER

WAYNE SMITH GUEST OF HONOR AT SIGMA CHI FUNCTION GIVEN BY WALTER BEACH

Covers were laid for eight Sigma Chi members Thursday evening at a beautifully appointed five-course 7 o'clock dinner at the home of Walter Beach, 633 North Brand boulevard, in honor of Wayne Smith, who is to claim Miss Dorothy Hobbs for his bride the first of June.

The fraternity colors, blue and gold, were carried out in a suspended sheath of flowers made into the frat's insignia from which extended blue and gold satin streamers. Large bunches of gold marigolds and blue corn flowers were also effectively used.

After dinner the guests derived great sport from looking at the presents consisting of O-Cedar mops, alarm clocks, rolling pins, etc., which were brought to the miscellaneous shower in honor of the occasion. Music, cards and reminiscences of college days kept the young men until a late hour.

Covers were laid for Kenneth Perrin, Mansford Barnes and Louis Reed of Glendale, Dick Maloney, Art Frost and Herald Webber of Los Angeles, the host, Walter Beach, and the guest of honor, Wayne Smith.

Y. M. C. A. CLUBS

SEVERAL INTERESTING MEETINGS HAVE BEEN HELD THIS WEEK

The different Y. M. C. A. Clubs have been holding some interesting meetings this week. The boys at the Pacific Avenue School P. X. Club had a large attendance this week and J. P. Fansett, who claims to have the largest bunch of boys in town, reports that several of his boys have registered for the Pine Flats Camp and more to come. Geo. Tyrrell reports a fine meeting this week and several more boys signed up for Pine Flats, same at the Tropico P. X. Club. The signers for camp are coming in fast.

The Triangle Club has the largest number who are going to camp and at their meeting this week they decided to enter the big Jamboree to be held tonight in the First M. E. Church. This is sure going to be some meeting. All the clubs in the district will be represented and will participate in a big "feed" which the ladies of the church are to serve for them. The boys have invited their fathers to come with them and see the various boys' clubs in action, the study work, the stunts, the great camp fire scene and the picture machine showing the pictures of the Great Pine Flats Camp where so many Glendale boys are going for a glorious two weeks.

The boys want all the men to come and join them tonight. The feed is at 6:30. Any boy in town is invited, so is his dad.

WEATHER FORECAST: Fair and warmer tonight and Saturday.

COUNTY SCHOOL TAXES

SUPERVISOR DODGE VISITS GLENDAL AND EXPLAINS HIS ATTITUDE

Chairman Jonathan S. Dodge was a visitor in Glendale Thursday and after he had greeted an acquaintance or two almost the first question asked him concerned his attitude on the proposition to increase the county tax rate in order to provide money with which to raise the pay of school teachers, a proposition which is to have a hearing before the Board of Supervisors today. He hastened to express his sympathy with the movement to give the teachers more money, declaring it was a perfectly just demand in view of the increased cost of living. He expressed his disapproval, however, of the method proposed for securing the increase as wasteful and not according to his idea of business principles.

The proposition, as he explained it, is to raise the county tax for elementary schools from 24 cents per \$100 of valuation to 50c—the limit allowed by law,—or an increase of 26c on each \$100—more than 100 per cent.

For the High Schools an increase from 14c to 35c per \$100 of valuation. (Continued on Page 3)

HEAVY LOSS IN BURNING OF FRUIT STAND

The burning of the fruit stand of T. Satow, a few hundred yards west of the Los Feliz crossing of the S. P. tracks, yesterday morning, was a much more serious affair than it was at first considered. The building was a mere shack, spread over considerable ground and was worth, at present prices for material, probably \$1000. But it was the stock which was valuable. There were over \$700 worth of walnuts, Satow said, and he had just unloaded 40 boxes of apples. Then there were oranges, lemons, grape fruit and many kinds of vegetables. More than this, Satow had a little over \$600 he had collected the day before and which he had not had time to deposit in the bank. He figures his loss at nearly \$4000 and he had not a dollar of insurance. But when he gets his place rebuilt, and with the aid of several Japanese friends he counts on getting this done in a week, he will have everything fully insured, he declares. The origin of the fire is unknown. It was either from crossed wires or a cigarette stub, the supposition is.

CHAMPIONSHIP BALL GAME

The game which will decide the championship of the Interscholastic League of Southern California is to be played next Thursday afternoon at San Diego, between the team of that city and Glendale's nine. From 60 to 100 rooters are expected to accompany the Glendale team.

This evening there is a game on the High School grounds with the team from Citrus Union High.

FOR WAR ORPHANS

OUT-OF-DOOR CLUB GIVES PRETTY ENTERTAINMENT AT BLAKE FRANKLIN'S HOME

A very pretty and creditable affair was given one afternoon this week at the home of Mr. and Mrs. Blake Franklin by girls who are members of what is known as "The Out of Door Club." It was an entertainment for the benefit of French war orphans and \$3 was realized from the effort.

The main feature of the program was a little play in three acts called "Little Jane Patchwork." Between the acts variety numbers were given which included:

Song, "In the Sweet Long Ago," by Josephine Franklin.

Sea Shell Song, in beach costume, by Bettie Heustis, Anna Margery Phillips and Florence Peterson.

Recitation, "Freckles," by Anna Margery Phillips.

Fairy Dance by Bettie Heustis. Members of the cast of the play were:

The Queen, Marian Gray. The Grandmother, Mary Joe Phillips.

Little Jane Patchwork, Josephine Franklin.

Elfs, Bettie Heustis and Anna Margery Phillips.

Fairies, Isabel Franklin, Florence Peterson, Anna Margery Phillips. The program was enjoyed by an audience of about twenty-five mothers and friends of club members.

WATER POWER BILL PASSES

SENATE ENDS 12-YEAR FIGHT AND RATIFIES ACTION ON MEASURE WHICH NOW GOES TO PRESIDENT

(Special Service to Glendale Evening News)

WASHINGTON, May 28.—Ending a 12-year fight, the Senate today passed the water power bill as it came from conference. The House having already agreed to the measure, it goes to the President for his signature.

FOOD PRICES DECLINE

VEGETABLES ON CHICAGO PRODUCE MARKET CHEAPER BECAUSE OF HEAVY ARRIVALS

(Special Service to Glendale Evening News)

CHICAGO, May 28.—Fresh vegetables tumbled on the Chicago Produce Market today for the second time within a week. Heavy arrivals were declared to be the cause. Strawberries, onions, lettuce, rhubarb and radishes showed a big decline.

GENERAL DIAZ SURRENDERS

AGREES TO TURN OVER HIS ARMY IF GUARANTEED SAFE CONDUCT TO VERA CRUZ

(Special Service to Glendale Evening News)

VERA CRUZ, May 28.—General Felix Diaz has agreed to surrender his entire forces to General Sanchez, revolutionary commander, according to reports received here today. Diaz arrived at Misantla, State of Vera Cruz, and in transmitting the proposal to surrender himself and his army he asked for a guarantee of safe conduct to the city of Vera Cruz where he intends to sail for some foreign port, the report said.

RIOTS AT BRISTOL, R. I.

THREE MEN SHOT AND MORE THAN SCORE INJURED IN FREE-FOR-ALL STRIKERS' FIGHT

(Special Service to Glendale Evening News)

BRISTOL, R. I., May 28.—Three men were shot and more than a score injured here today when strikers and guards at the National India-Rubber Plant engaged in a pitched battle. More than 4500 strikers participated in the riot. At one o'clock there was a lull in the fighting which had continued all the morning.

The strikers gathered in small crowds on the different streets leading to the city. A further outbreak was feared. The trouble started on the arrival of women clerks and mechanics who reported for work as usual. One woman attacked a girl clerk and a free-for-all fight followed.

KNOX PEACE RESOLUTION

HOUSE KILLS MEASURE BY REFUSING TO OVER-RIDE PRESIDENT'S VETO

(Special Service to Glendale Evening News)

WASHINGTON, May 28.—The Knox peace resolution was killed today by the action of the House in refusing to over-ride President Wilson's veto of the measure. The vote was 219 for over-riding and 152 against, or twenty-five less than the necessary two-thirds.

REBELLION IN IRELAND

THE BURNING OF PUBLIC AND PRIVATE BUILDINGS AND SHOOTING OF CITIZENS CONTINUES

(Special Service to Glendale Evening News)

LONDON, May 28.—The burning of private and public buildings and the shooting of citizens continued in various parts of Ireland last night. The coast guard station on Sybil Head was burned and so was Castle Caulfield Barracks in Kerry County. A farmer in County Clare was attacked and seriously wounded by a mob. A citizen was shot near Lisboonvarna. Additional troops are expected to reach Ireland today. Three other battalions are under orders to proceed to Ireland Monday.

EMBARGO ON SUGAR EXPORTS

(Special Service to Glendale Evening News)

WASHINGTON, May 28.—The Senate Agricultural Committee today ordered a favorable report on the McNary bill providing for an embargo on sugar exports. The committee believed this would help to reduce the retail price of sugar.

PROFITEERS FOUND GUILTY

(Special Service to Glendale Evening News)

SYRACUSE, N. Y., May 28.—Weeds, Incorporated, of Binghanton, was found guilty today of profiteering in violation of the Lever Act and fined \$31,000 by Federal Judge Manton. Excess profits on the sale of clothing were charged.

TRUSTEES' MEETING

D. S. PHILLIPS, AUDITOR OF PUBLIC SERVICE DEPARTMENT, PRESENTS RESIGNATION

The Board assembled at eight o'clock p. m., May 27, 1920. All members were present. The minutes of the regular meeting of May 20, 1920, were read and approved.

Dr. Mabry addressed the Board in reference to signs recently put up at the intersection of San Fernando Road and Brand boulevard, and of San Fernando Road and Broadway. He stated, in reference to this matter, that the signs are misleading in that the arrow upon them points to the center of Glendale in apparent discrimination against the place of their location. In this connection he filed a petition signed by property holders and business men of South Glendale requesting that the Board of Trustees remove the arrow connected with said signs, as the petitioners feel that the sign as it now is discriminates against the business men of South Glendale. City Manager Watson being called upon stated the circumstances connected with the matter, as he knew them. Trustee Stephenson made a motion, which was seconded and adopted, that the City Manager notify the Greater Glendale Development Association to remove the arrows from the two signs over San Fernando Road.

Captain Drew Nicoles addressed the Board in reference to patriotic services on Memorial Day and requested that the Trustees provide means with which to secure the services of a band on that occasion. On motion of Trustee Henry, it was ordered that the city appropriate the sum of \$90.00 to be paid for the (Continued on Page Ten)

LOMA LINDA GRADUATION

At the graduation exercises of Loma Linda Medical College last evening, which a number of Glendale people attended, there were 15 medical graduates, 28 nurses and 5 medical evangelists. Dr. W. E. Holden, of Portland, Oregon, delivered the commencement address and Dr. Newton Evans, president of the college, presented the diplomas to the graduates. Among the Glendale people present were Dr. Henry Harrower, B. M. Emerson and wife, also his father and mother, Miss Lavina Conner, Miss Winifred Sturges and the latter's parents. Miss Sturges' brother graduated from the medical department and a sister from the nurses' department.

ASK BOND ELECTION

WELFARE ASSOCIATION SUGGESTS THAT CONGESTION AT H. S. BE RELIEVED

The Welfare Association of the Glendale Union High School has addressed to the Board of Trustees the communication appearing below believing that the same will meet with universal approval.

To the Honorable Board of Trustees, Glendale Union High School:

It being the earnest wish of the Union High School Welfare Association that there be immediate steps taken to relieve the congested condition prevailing at the High School and that this be done in such a manner as to secure the universal approval and support of the citizens of the District, you are hereby respectfully requested to call an election at the earliest possible moment for the purpose of voting bonds sufficient to cover the construction and furnishing of such temporary buildings of the bungalow type as may be necessary to meet present requirements or until the proposed change of location may be practicable. All such buildings to be so constructed as to facilitate their future advantageous sale and easy removal.

It is the belief of the Welfare Association that a call for not to exceed \$35,000 for the avowed purpose as above stated will meet with popular approval. It will also meet with the unanimous and unstinted support of the Welfare Association, whose members are desirous that their efforts and those of the Board be harmonized, if possible, through a unity of purpose—that purpose the genuine welfare of the Glendale Union High School, present and future.

UNION HIGH SCHOOL WELFARE ASSOCIATION.

E. K. BARNES, Vice-Chairman, W. L. BAKER, Secretary. May 26, 1920.

DIRIGIBLE B-18

AIRSHIP FROM SAN DIEGO TO DROP FLOWERS ON GRAVE MONDAY AT FOREST LAWN

A notable feature of this year's observance of Decoration Day in Glendale next Monday will be the appearance over Forest Lawn Memorial Park at the time of the exercises, about 2 p. m., of a dirigible, the B-18, lent by the government for the purpose, which will fly from San Diego especially for this purpose, drop flowers from above on the symbolic grave and then return to the starting point without landing. Any Glendale people wishing to contribute flowers for this purpose must leave them at the Little Church of the Flowers in Forest Lawn by Sunday, 10 a. m. They will be taken to San Diego in a fast automobile and loaded on the dirigible the next morning.

This unusual and impressive feature of the observance has been made possible by the joint efforts of the patriotic orders of Glendale and the Forest Lawn Memorial Park Association and is but one more fitting tribute to the memory of the heroes who fought to preserve the Union, to rescue Cubans and Filipinos from oppressive rule and the people of the world from the ruthless hordes of Hunland who sought to set up on the earth the rule of might in place of right.

It is a source of pride to American citizens that the last three wars, in which their heroes were engaged as combatants and whose memory we honor each recurring Decoration Day, were all fought in defense of human rights.

GRADUATE NURSES

MISS CARO WHITAKER, MARGARET LANG RECEIVE DIPLOMAS ON COMPLETING COURSE

Exercises in connection with the graduation of nurses who have completed the three-year course at the Pasadena Hospital, drew quite a delegation from this city. Miss Caro Whitaker, daughter of Mr. and Mrs. George Whitaker of this city, and Miss Margaret Lang of Sunland, were graduates. Both of these young ladies were students at Glendale High and have many friends among the young people of this district.

The exercises took place at the Neighborhood Club of Pasadena, and the program included fine speeches and musical numbers by talented young women undergraduates, the nurses appearing in uniform.

Diplomas were presented by Dr. Sherry of Pasadena, head of the medical staff of the hospital, who has had the pleasure of officiating in a like capacity for the past seventeen years.

In the delegation which went from this city were: Wirth Calkins, Miss Coral Griffith, Mr. and Mrs. George Whitaker and family, Mr. and Mrs. F. F. Whitaker, Eustace Rowley, Earl Kingsley, Mr. and Mrs. Joe Fortunato and their niece, Miss Alice Holmes.

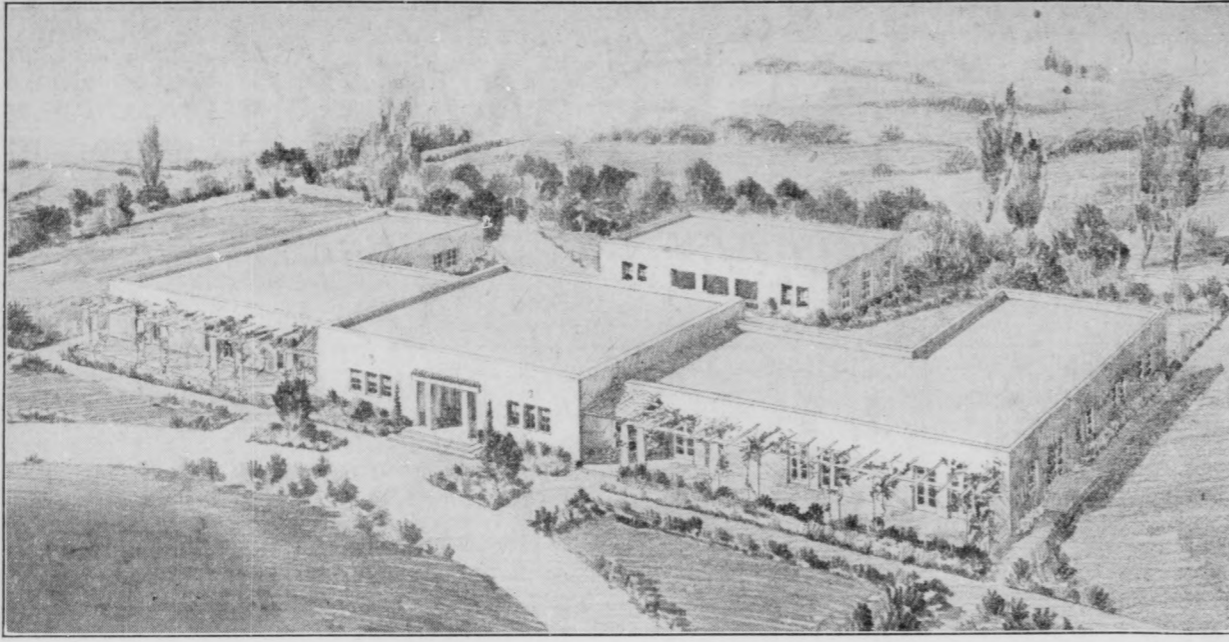
FOREST FIRE TALK

RANGER MARX WARNS STUDENTS OF DANGER FROM MOUNTAIN FIRES

Forest Ranger Marx addressed High School students at the third period Thursday in the campaign that Forest Reserve officials are making to educate the public in regard to the danger of mountain fires and the necessity for the exercise of great care on the part of campers. It was an instructive talk in which he showed how important is the preservation of the mountain covering to conserve the moisture that falls during the rainy season and upon which depends the water used for domestic and irrigation purposes. He also mentioned the heavy penalties imposed by the federal government for violations of its fire regulations. Ranger Marx was also to speak at some of the grammar schools.

MRS. GOEWY IMPROVING

Friends of Mrs. Maude Shugart Goewy, who has been very ill at the private sanitarium of Mrs. Anderson, 1312 East Harvard street, will be glad to know that she is considerably improved. Although not yet well enough to see her friends it is hoped that she will be able to do so in a few days. Mrs. Goewy greatly appreciates the kindly inquiries of her friends.



THE GLENDALE RESEARCH HOSPITAL

Spencer Robinson
A. L. Baird

OFFICERS AND DIRECTORS:

Herman Nelson

Dr. J. A. McNaughton

Roy L. Kent

Glendale's New Hospital

Is This Hospital Necessary?

It has been shown that one hospital bed should be provided for every one hundred people. With a population of 14,000 Glendale should have one hundred and forty hospital beds. Los Angeles hospitals are overcrowded. Shouldn't our people have adequate hospital accommodations?

Who Will Benefit By It?

This is a non-sectarian hospital open to anyone who needs hospital care. The stock is being sold on terms that make it possible for everyone to have an interest in it. The plans include forty beds. Every convenience to be found in a modern hospital has been arranged for. Provision is made for those who desire the best as well as for those who prefer less expensive accommodations. Additions may be made whenever practicable without interfering with the architectural scheme of the building or the convenient arrangement of the plant.

Is It a Safe Investment?

We can only refer you to the men who are sponsoring this movement; to the men and women of business judgment who are buying stock; and to the dividends hospital stock is paying other places.

Who Can Buy Stock?

Glendale Research Hospital stock is on the market now and is selling to everyone alike at par (\$100 per share). You can buy as little as one share and pay for it in monthly or quarterly installments.

Further Information at

131 South Brand Blvd.

Phone Glendale 408



OFF FOR THE BEACH

You are not entirely prepared for the plunge in the surf unless you have been to this store and selected from our stock

A Comfortable and Becoming BATHING CAP

The merit of these caps lies in the splendid quality of the rubber used in them, the great variety of styles and sizes and the charming designs in which they are fashioned and trimmed.

Take plenty of time to select a cap that will harmonize with your bathing suit and be becoming and at the same time feel just right on your head.

ROBERTS & ECHOLS

FIRST NATIONAL BANK BUILDING

Phone Glendale 195

Yes, We Deliver

FRONT ROW SEATS FOR G. O. P. WOMEN

CHICAGO, May 25. (United Press)—Social lines will disappear during the G. O. P. national convention here June 8th as far as women delegates to the convention are concerned, according to plans of local Republican hostesses who completed their program of entertainment for the feminine delegates yesterday.

Chicago's smartest women today were prepared to work alongside their sisters of the factories and department stores in aiding their sex representatives at the convention in having a good time.

Homes on the Lake Shore Drive and the South Shore Country club will be thrown open to women delegates. There is to be no room shortage for the visiting feminine branch of the Republican party. Snobism is to go by the boards as long as the convention lasts.

This is the first time in history of the Republican party—or any other party—that women have played a direct part in the selection of a party's Presidential candidate. With this in mind, Republicans are out to capitalize the fact for all it is worth and while delegates are here, they are to be feted and fussed as they never were before. Front row seats with their state delegations in the convention hall have been assigned to them to make prominent the part they are to play. Women's vote is to cut a wide swath in the elections this fall and all the attention they can give to women's delegates and prominence to the women's part, politicians figure, means gains in votes.

One hundred women are expected to participate in the convention, according to Mrs. Mabel Reinecke, executive secretary of the Woman's Division of the Republican National Committee. Close to this number have already been selected and when complete returns are in it is believed the figure may run higher than a hundred.

Automobiles, afternoon teas, yachting on Lake Michigan, theater box parties, cabaret expeditions, excursions into the country or across the lake to Michigan summer resorts, and aeroplane rides will be on the program of entertainment.

Forty-eight hostesses, one for the women delegates from each state, have been assigned to entertain the visitors. They will also take care of the women-folk of the men delegates.

Women politicians, supporters of presidential candidates, "button-holed" several women delegates who arrived here yesterday to urge them to vote for their candidate. Several score of women political lobbyists will direct their efforts to swing women delegates' votes to their candidate, during the convention.

"Women will be on a par with the men at the convention," said Mrs. Reinecke. "Each state chairman of the men's and women's organizations is to be provided with one of the much coveted tickets. Members of the men's and women's national committees, all state chairmen of finance committees and men and women on the platform and policies committee have been provided for on an equal basis."

Pretty Chicago society debutantes have formed a volunteer motor corps to drive the women visitors around town.

Hungary will sign the peace treaty, it is announced. Then she will begin disregarding its provisions, probably.

It once was claimed that two could live as cheaply as one. There is nothing cheap about living now, whether it is one or two.

Debs says he has a fear that he is not radical enough. Strange talk from the nominee of a "conservative" party such as Morris Hillquit declares the Socialist to be.

Advertise it, or advertise for it in the Evening News.

OUR REPUTATION

From the beginning, the policy of this house was to build a reputation—to make our name stand for superiority in our line of work—to establish an institution to which you would instinctively turn in the trying times when such service as we render is necessary.

The response has made us feel that we have succeeded.

Our charges are reasonable

L. G. SCOVERN COMPANY

UNDERTAKERS

Brand Blvd. at Acacia Ave.

Phone Glendale 143

NOTICE OF ASSESSMENT

VALLEY WATER COMPANY, a corporation, its principal place of business being located at La Canada, County of Los Angeles, State of California, (postoffice address of said corporation being R. F. D. No. 13, Box 49, Los Angeles, California).

NOTICE IS HEREBY GIVEN that at a meeting of the board of directors held on the 13th day of May 1920, an assessment of fifty cents (50c) per share was levied upon the capital stock of the corporation, payable May 17th, 1920, to E. A. Brigham, treasurer of Valley Water Company at the office of said corporation, to-wit, at the residence of F. D. Lanterman, La Canada, County of Los Angeles, California, (the postoffice address of said corporation being R. F. D. No. 13, Box 49, Los Angeles, California). Any stock upon which this assessment shall remain unpaid on the 14th day of June, 1920, will be delinquent and advertised for sale at public auction, and unless payment is made before, will be sold on the 1st day of July, 1920, to pay the delinquent assessment, together with costs of advertising and expenses of sale.

F. D. LANTERMAN, Secretary of Valley Water Company, R. F. D. No. 13, Box 49, Los Angeles, California.

For women swimmers a transparent celluloid collar has been invented, of sufficient size to keep the hair as well as the face dry.

Don't Forget
YOSEMITE ECONOMY RUN

Overland Touring	35.11 Miles per Gallon
Overland Sedan	27.1 Miles per Gallon
Willys-Knight	21.7 Miles per Gallon

CLEANING UP 1, 2, 3
THERE IS A REASON

OVERLAND GLENDALE MOTOR CO.
215 EAST BROADWAY GLENDALE 1400

WE CLOSE MONDAY, MAY 31st

S. W. CHRISTY

115 S. Brand Blvd.

TEA—
This is weather for ice tea. We have a good line of green and black teas, Ridgway's, Lip-ton's; also bulk tea, lb 60c, 70c, 80c, 90c, \$1 Hilvilla Tea, green and black, 1-4 lb 23c 1-2 lb 45c 1 lb 88c

CRISCO—
1 lb 34c; 1 1/2 lb 50c; 3 lb 98c; 6 lb \$1.90

SUETENE—
2 lb 60c 4 lb \$1.15 8 lb \$2.25

VIOLET—
1 lb 33c 1 1/2 lb 49c 6 lb \$1.85

MAZOLA—
Pt. 40c; Qt. 75c; 1-2 Gal. \$1.45; Gal. \$2.80

SPECIALS—
Taylor's Pork and Beans, 1-lb can, 3 for 25c
Dainty No. 2 Beets, they're fine, 3 for 30c
Nugget, No. 2 solid pack Tomatoes 15c
A good \$1.25 Broom for \$1.00
Schilling goods.

SOAPS—
Rub-No-More, 2 for 15c; case \$7.00
Clean E-Z-Y, Saturday only case \$5.00
White Navy, 4 for 25c; case \$6.00
Lenox, large old style bar, each 5c
Lenox, 120-bar case \$5.90

RAISINS—
Del Monte Seeded, 11-oz. pkg. 18c
Sun Maid seedless, 11-oz. pkg. 20c
Sultanas, seedless, bulk, lb 25c
Muscat Cluster, bulk, lb 25c
Get yours now; the supply will soon be exhausted.

SYRUP—
Uncle John's sm. 35c; med. 65c; large \$1.25
Old Manse sm. 35c; med. 65c; large \$1.25
extra large \$2.35.
Scudder's sm. 35c; med. 65c; large \$1.25
These prices are far below the present market; get yours now

WE DELIVER PHONE 859

C. O. PULLIAM E. O. KIEFER

PULLIAM & KIEFER

(Successors to)

PULLIAM UNDERTAKING CO.

305 E. Broadway Phone Glendale 201

59c 59c 59c

Special Enamelware Sale

STARTING SATURDAY

Values up to \$1.50

Pudding Pans Wash Basins
 Small Dish Pans Sauce Pans
 4, 6 and 8-Quart Stew Pans
 Covered Kettles, Etc.

Any Item in Window

59c

Neale & Gregg Hardware Co.
107 North Brand Blvd.

ANNOUNCEMENT

The Glendale Sanitarium and Hospital take pleasure in announcing that their dining room is now conducted on the European plan and is open to the public, especially to those who appreciate a good, clean, wholesome, vegetarian diet at very moderate prices.

Special Sunday Dinner Every Sunday
TABLES MAY BE RESERVED

Breakfast, 8:00 to 9:00 a. m.
Dinner, 1:00 to 2:00 p. m.
Supper, 6:00 to 7:00 p. m.

Good Clothes will help you win

You need every aid to win in the battle of life today. The well-dressed man is the best equipped.

Why not patronize a tailor who guarantees you a fit and stands back of the clothes he makes, one who has won a reputation for business integrity by nine successive years in business in Glendale?

WHY NOT ORDER THAT
—SUIT TODAY?—

S. BERMAN

122 North Brand Glendale 423-W

Camping, Hiking or Motor Trips

call for substantial eats. Exercise in the open air creates enormous appetites.

Before preparing the lunch for the next outing phone Glendale 1230 for wienies, bacon or a nice roast to slice cold for sandwiches.

Remember that this is the home of

QUALITY MEATS

Glendale Market

—Fresh, Salt and Smoked Meats—

630 E. Broadway Glendale 1230

PATRIOTIC BANQUET

(Continued from Page 1)
lent little talk in the course of which he expressed the appreciation of the organization of the fine supper which the ladies had served. He closed with a clever parody of a familiar song which included the lines:

"Backward, turn backward, Oh Time in your flight,
Give me some sugar again just for tonight."

Rev. F. Marion Smith was then introduced by the president and gave a cordial word of greeting to all present. He reviewed briefly his experiences overseas and the lessons he there learned—that pep and enthusiasm such as was manifested there are the great spurs to endeavor and success means putting one's whole heart into an enterprise. He spoke particularly of the building of the railroads and ports which sprang up like mushrooms because the men who built them worked as a unit and with vim.

E. E. Williamson, local secretary of the Y. M. C. A., announced the opening of the Y. M. C. A. mountain camp and of the work which the local organization is inaugurating in Glendale for young men. In this connection he mentioned the increase of cigarette smoking and urged the co-operation of parents and all young men in suppressing the evil.

James L. Brown, Superintendent of the Sunday School, expressed the wish that the school of which he is the director might have a men's Bible class as large as the company he was addressing.

C. H. Muhleman took as his theme the diverse elements which enter into the making of a toothsome spiced pickle, likening it to the making of an all-around man adapted to the demands of our complex civilization. The typical man, he declared, must not be either too sweet or too sour, and he must possess the right amount of pep and spice.

The main speaker of the evening, Dr. Willis Martin, pastor of the First M. E. Church of Hollywood, was then introduced. He is an old timer having come to Santa Ana 32 years ago. He spoke most encouragingly of conditions in California which he pronounced the playground of the world. Southern California being the cross-roads of the world, the link between the Occident and the Orient. He paid an eloquent tribute to the soldiers of the Civil War, saying the sight of a bronze button always made him realize afresh what took place in those days in the sixties and how much the Union owes to the work done by those veterans, so many of whom are sleeping their last sleep.

The speaker dwelt on the many years required for the reconstruction and readjustment following the Civil War and spoke of the trying period of unsettled conditions upon which we are entering as a result of the world war, prophesying that one hundred years may elapse before a full adjustment will be reached.

The war, he said, has caused a great many men to get out of regular habits of work. What we now need, he declared, is for men to show their patriotism not by shouldering the musket and going forth to defeat an enemy, but to take a plane, a saw, a hoe, and go forth to constructive work.

He emphasized the importance of our having but one flag and advocated requiring every foreigner coming to this country to become familiar with the English language, and if he did not show his loyalty to the flag of this country being ordered back to the country to which he was loyal. He also declared his absolute opposition to internationalism.

As strongly as possible he preached the gospel of work, and insisted that parents who do not provide their sons and daughters with suitable work, are failing in their duty. He spoke appreciatively of proper recreation but thought a judicious amount of physical work might properly take the place of the athletic activity.

The responsibilities of parents as heads of families were brought home and the folly of allowing boys the free use of high-powered automobiles in which to take out their companions at pleasure at all times of day and night. Our young people, he seemed to think, have too much freedom, and the license we give them is, in his opinion, a menace to their future welfare.

The duty to the emigrant was pointed out. Said he: "When a family from a foreign country settles in a community it is the duty of neighboring American women to go to that mother and teach her to become a good American citizen. She has a difficult position. Her husband mingles with Americans at his daily labor, the children go to school and become Americanized, but the mother struggles along knowing nothing except what she learned in the land of her birth. Pretty soon her children call her 'a back number' because she has not kept abreast with them." At considerable length he dwelt on this phase of Americanism as at once the duty and protection of our country, but he did not neglect to call attention to the equal duty of training the rising generation of our native born in the principles of true Americanism and

COUNTY SCHOOL TAXES

(Continued from Page 1)
tion is asked or 21c increase which equals 150 per cent advance over the rate paid last year. This, the supervisor explained, would have the effect of placing a heavy additional tax on Los Angeles High School District which he estimated at \$1,198,112, to be distributed according to attendance, and of the amount mentioned \$117,000 would be diverted to outside schools. He mentioned Glendale, Pomona and some other localities as likely to benefit greatly under such a system.

He made no comments on the plan that is being urged upon the supervisors of bringing into High School Districts property that is now outside any High School District for one reason or another, but which is of high value such as the Beverly Hills and Oak Knoll Districts.

The idea of Supervisor Dodge appeared to be that instead of asking for a blanket increase of school moneys, each district should decide independently how much of an increase it would give its teachers and how much extra money would be needed to maintain schools the coming year under the present economic conditions and then request from the supervisors enough money to cover this budget. When all the budgets had been received, he argued, the supervisors could make a tax levy sufficient to meet the needs and no more. To levy the tax and make the budget afterwards seemed to him illogical, he declared.

He rather took the ground that whatever increase may be necessary should be met locally rather than through county taxation because if secured the other way some districts would be paying taxes far in excess of the sums they would draw for their own schools from the county treasury while other communities would be reaping where they had not sowed, or, in other words, would be receiving far more from the county than had been paid by their district in taxes.

The rate last year in the county for all purposes exclusive of schools was quoted by Supervisor Dodge as 50 1/2c on each \$100 of valuation and he intimated that the chorus of protests over high taxes would be considerably swelled were 47c to be added to it and to the 38c per \$100 allowed for schools last year. While reiterating his desire to see the teachers better paid, he insisted that many of the taxpayers who are backing this movement do not understand what it means, in dollars and cents.

GRAMMAR SCHOOL BALL LEAGUE

Scores achieved by in-door ball teams in the Grammar School League have now reached a point where it is possible to speculate on the possible winners of the city championship. Following are the scores as compiled by Mr. Blanford, Director of Athletics for City Schools:

Columbus Avenue: Won 3 games, lost none, giving it percentage of 1.000.

Colorado and Pacific: Won 2 games, lost 1, giving them percentage of .66 2-3.

Central Avenue: Won 1 game, lost 2, which gives percentage of .333.

Cerritos and Broadway: Won no games, lost 2, giving percentage of 0.

There are still seven league games to be played. Some teams have two to play and one or two have three games yet to be played. It now looks as though the championship would lie between Pacific Avenue, Columbus Avenue and Colorado Boulevard.

A novelty in athletics is likely to be seen on the Intermediate diamond in the near future if the plans of the Grammar School Director are carried out. He is endeavoring to arrange for a game between one of the boys' teams in the league and one of the girls' teams of Intermediate.

A race of pygmies living at an altitude of 2000 feet has been discovered in New Guinea by British scientists.

their responsibilities as citizens of a great republic.

Those present as members and guests were: Rev. Willis Martin, Rev. F. Marion Smith, W. F. Shiner, C. G. Paul, E. E. Williamson, A. E. Hewitt, L. P. Baker, R. J. Wallace, A. A. Baker, James Wallace, James L. Brown, Charles D. Klamm, Dr. P. O. Lucas, W. H. Marple, Rev. Henry Goodsell, C. H. Muhleman, E. Pierson Tyler, F. A. Prouty, R. B. Baker, A. T. Cowan, Charles Klamm and Dr. Joseph Marple.

MOUNTAIN VIEW REST

Treatments Given by Experienced Nurses
PRICES REASONABLE
1425 E. CALIFORNIA AVE.
PHONE GLENDAL 1646-J

Glendale Sheet Metal Works

"Everything in Sheet Metal"
Phone Glendale 1422-J
127 N. Glendale Ave. Glendale, Cal.



AN APEX CLEANER WILL MAKE YOUR HOUSEWORK EASIER AND PLEASANTER

Why not call Glendale 568 and make an appointment with our salesman to call at your home and demonstrate to you?

An Apex, Royal or Hoover Cleaner, A Blue Bird, A. B. C., Crystal, Geyser or One Minute Washer

Jewel Electric Company

202 East Broadway

Good Plumbing

Poor plumbing is the most expensive thing you can buy. It is soon in need of repair and there is nothing more annoying, not to say dangerous than plumbing that is out of order.

We Do Good Plumbing And This Applies To The Quality Of The Fixtures We Use As Well As To The Quality Of Our Work

See Us For New Plumbing Work Or Repairs

Can't We Install For You An
AUTOMATIC WATER HEATER
—or a—
GAS FLOOR FURNACE

E. COKER
The Plumber

121 N. Brand Blvd.

Glendale 647

LAST CHANCE THIS YEAR

MISSION PLAY CLOSSES
MAY 30

UNTIL THAT TIME PERFORMANCES EVERY AFTERNOON EXCEPT MONDAY; AND ON WEDNESDAY AND SATURDAY EVENINGS ONLY

CALL THE
Wildman Transfer Co.
STORAGE
Office 120 E. Laurel Street
For Prompt, Efficient Service and Right Prices
Phone Glendale 262-W

BRICKWORK and MANTLES
Call
J. F. KLANN
Glendale 766-J

THE GLENDALE EVENING NEWS

Published Daily Except Sunday

A. T. COWAN - Publisher and Proprietor

Office of Publication, 304 East Broadway
PHONE GLENDALE 132

Entered as second-class matter Sept. 12, 1913, at the Postoffice at Los Angeles, Cal., under the Act of March 3, 1879.

SUBSCRIPTION RATE—Single Copy, 5 Cents; One Year, \$5.00; Six Months, \$2.75; Three Months, \$1.40; Two Months, \$1.00; One Month, 60c

GLENDALE, CALIFORNIA, FRIDAY, MAY 28, 1920

JURY CONVICTS OF TRAFFIC LAW VIOLATION

For the first time in the history of Glendale as a city, Motor Speed Officer Trautwein declares, an alleged violator of the traffic ordinance was convicted by a jury, yesterday. L. Z. Taylor was arrested on the charge of causing his auto to make "a loud and unnecessary noise" on the street, and chose to be tried by a jury of eight persons. The evidence was given in and then both sides waived instructions. A verdict of guilty was quickly brought in and the sentence of the court was a fine of \$25 or 25 days in the county jail. An appeal was taken to the Superior Court. Mr. Trautwein says the impression seems to be general among violators of traffic laws that judges are too severe in their sentences and that juries will be more lenient, and he considers that this case will have some effect in dissipating such impression. But the punishments meted out thus far seem to have little deterrent effect, he says, for there were 15 cases of traffic law violation yesterday and in two of them the arrested parties were speeding within the city limits at 38 and 40 miles an hour, respectively.

ANNOUNCEMENTS

SHORT ORDER SERVICE
THE WHITE INN, Corner Broadway and Glendale Avenue, takes pleasure in announcing that they will serve the public, beginning Wednesday, May 26th, with short orders from 8:30 a. m. till 8 p. m. And also a Merchants' Lunch from 11:30 a. m. to 2 p. m. and Table d'hôte dinner from 5:30 to 8. Our motto is Service, Cleanliness and Quality.
MRS. JACK THOMAS.

NOTICE TO AGENTS
Please be advised that my property at 1202 South Glendale Avenue is hereby withdrawn from the market until further notice.
WILLIAM O. HOOD.

WHY NOT DANCE?
Dance with your friends this summer. Waltz, fox trot and one step easily learned. Lessons any time. Mrs. Nanno Woods: Glendale 394.

CLASSIFIED ADS
First Insertion—Minimum charge 30 cents including four lines counting six words to the line. Additional lines 5 cents per line. Subsequent consecutive insertions—5 cents per line. Minimum 15c. Ten cents additional for first insertion if cash does not accompany order.

FOR SALE

REAL ESTATE
FOR SALE
4 rooms, lots of poultry houses, fruit. \$2000.00. \$600.00 down. \$25.00 per month.
3 rooms, poultry houses, lot 50x150. \$2500.00.
5 room. New, garage, lot 50x135. \$3850.00. \$500.00 down. \$35.00 month including interest.
5 room. New, garage, lot 95x135. \$4500.00. \$500.00 down. \$40.00 per month including interest.
6 rooms, hardwood floors throughout, tile bath, tile encased tub, nice lawn, flowers and fruit, 1-2 block from Brand. \$5500.00.
6 room strictly modern, breakfast room, cellar, garage, corner lot 50x150, lots flowers, fruit. The best buy in Glendale, one block from Broadway. \$6000.00.
5 acres, dandy 7 room house, close in, 1-3 cash. \$15000.00.
7 room chalet, completely furnished, fine location. Close in. Immediate possession. \$7000.00.
Brand Blvd. corner lot 150x140. \$6500.00.
We have some good buys in acreage and lots. See us before buying.
CHASE or BURN, 108 N. Brand. Phone Glendale 190. Residence Phone Glendale 954-W.

FOR SALE—
A FINE 7-ROOM CHALET, hardwood floors, garage, large lot, \$4500; easy terms.
ATTRACTIVE 8-ROOM HOUSE, large grounds, plenty fruit trees, good garage and barn, lots of room for chickens, best location, below value.
A GOOD SIX-ROOM BUNGALOW, lot 100x150, close in, a good investment.
NEW FIVE-ROOM HOUSE, COLONIAL, choice location, a bargain, can make terms. 1 ACRE or 4 large lots, fine garden land, walks and curbs all in, below value.
McINTYRE
724 E. Broadway / Glendale 73-J

FOR SALE—First class home of 6 rooms. Colorado Blvd. Up to date in every way (except the price which is below market) only \$5000.00. Let me show this quickly as the owner is headed for Coachella and you can move in upon payment of \$2000.00. Here is the best bargain in Glendale today, so SEE ME soon.
EZRA F. PARKER, 117 S. Brand Blvd., Glendale.

FOR SALE—7 room strictly modern bungalow, elegantly located, large garage, fruit, flowers and shrubbery. Absolutely the best buy in Glendale at \$6500.
5 room modern bungalow, furnished. Very fine. Garage, fruit. Home-like. Well located. \$4300 for quick sale.
5 room modern bungalow, large lot, garage, \$3500.
2 dandy close in lots worth \$1000 each. Owner forced to sell. \$1250 cash will take both. You'd better hurry.
JACKSON, WHITE & SMITH
205 E. Broadway

FOR SALE—LOTS

For Temporary Residences
Beautiful 50-ft. lots within 2 blocks of Brand car line; only 20 minutes from Los Angeles. All street work in and paid for. \$550 and up. Terms \$110 down, balance monthly. E. P. Hayward, 139 N. Brand. Phone Glendale 250.
FOR SALE—Special! 5 room bungalow, lot 50x175, on Maple Avenue for \$4200.
6 room bungalow, lot 90x137, on Raleigh Street, for \$3650.
5 room bungalow, lot 50x180, on Vine Street, for \$3500.
2 fine lots on North Belmont Street, 100x150. 1-2 cash. Cut price \$1200.
See Hawkins or Heal, with C. Whitling, 205 E. Broadway.

OWNER offers 8 room residence on Central Avenue, lot 100x150 to alley, flowers and twenty bearing fruit trees. Cash or terms. Glendale 2233-R.

FOR SALE—New 5 room bungalow, close in, handy to school and church, one block from car line. For particulars inquire of owner on premises, 208 North Jackson.

FOR SALE—New 6 room bungalow with Pullman nook, basement, shower, automatic heater, best of lighting fixtures, elegant decorations. Most beautiful view in Glendale, East front. Dirt cheap at \$7000. Call F. W. Pigg, Glendale 1268.

FOR SALE—Beautiful new Colonial, 6 rooms, hardwood floors, thru-out. Also 5 room modern bungalow and one 8 room. Phone Glendale 512-W.

FOR SALE—Nice 5 room modern bungalow. Garage, storeroom, fruit trees and flowers. \$1000 cash. Balance terms. Call owner, 2255-J.

FRUIT LAND—Bartlett pear orchards in bearing, raw land. Abundant water supply. Very reasonable terms. Buy direct from owner. Robert A. McAdam, Jr., Palmdale, California.

FOR SALE—6 room modern bungalow. All built-in features, woodstone sink, 3 bedrooms, all completely refinished; 18 foot garage, fruit, garden in. One block to car line. Owner on premises. 218 E. Garfield.

FOR SALE—25 foot lot on Brand Boulevard between Harvard and Colorado. Only \$500 down. Splendid investment. James W. Pearson, 128 N. Brand. Phone Glendale 346.

FOR SALE—Houses and lots. Also want listings. What have you? Clark Realty Company. Glendale 111-J.

FOR SALE—Nice new five room bungalow. Lot 100x166. Small farm terms. F. W. Pigg. Phone 1268.

BARGAINS IN ACREAGE
About 2 3/4 to 3 acre pieces on through boulevard, with fine crop of blackberries and vegetables. Price only \$3500 to \$4000. E. P. Hayward, 139 N. Brand. Phone Glendale 250.

FOR SALE OR LEASE—4 room California house, garage, fruit trees. Also chickens and turkeys. 423 East Elk.

FOR SALE—At a bargain, lot 50x150, all kinds of young bearing fruit trees. \$200 down and \$15 per month. One block from Central Avenue. Call at 323 W. Windsor Road.

FOR SALE—5 room house. Large rooms, all conveniences, cement porch, lot 220x140, fruit and flowers. Glendale 734-J.

FOR SALE—7 room modern bungalow, garage, fine lot. Located on North Kenwood Street. The best buy in Glendale for \$7000. Also 5 room bungalow, close in. \$4500. Also 4 room Colonial, \$3200. Can arrange easy terms. See R. R. Bartlett, with James W. Pearson, 128 North Brand Boulevard.

FOR SALE—Must sell at once, 6 room modern, good location, close in, \$4500.
Will exchange 5 room modern bungalow in Santa Barbara for Glendale home.

BERKEBILE

Real Estate 134 N. Brand Blvd.
FOR SALE—Two lots in the heart of South Glendale, one on corner of two principal streets and the other next to it. Both bargains. Call Glendale 1189-R for particulars.

FOR SALE—\$3500. 5 room modern bungalow, with built-in features, fruit trees, garage and wood shed. Cash \$1000, bal. terms. Also 5 room bungalow, garage and workshop. Close in. \$3250. Cash \$800. Bal. terms. 9 room two-story house, \$5600. Close in. Cash \$1000, Bal. terms. Close in. Cash \$1000, Bal. terms.
HARRY M. MILLER
114 E. Broadway

FOR SALE—Attractive home place of Ella W. Richardson, 525 S. Central Avenue and Riverdale Drive. Fenced, 9 rooms, 2 baths, every convenience. Double garage, fruit. Terms. Inspection by appointment. Phone Glendale 1559-J.

TIME TABLE

Pasadena-Ocean Park BUS LINE

Hourly service between Glendale and Pasadena and hourly service between Glendale and the beaches. Cars go east 15 minutes after every hour omitting 9:15 a. m. Going west 30 minutes after every hour. Last car reaching Glendale from beaches 9:15 p. m.

FOR SALE—1 1/2 and 2 acre lots on Verdugo Boulevard between Montrose and Glendale. All improved with fruit trees in full bearing. These lots are beautiful home sites. See R. Verdugo, owner, 219 East Garfield Ave., Glendale, or J. Kirkby, living 2 blocks south of property. Mail address R. 13, Box 3.

FOR MAPPING and blueprinting, call Glendale 469.

POULTRY AND STOCK

RABBITS! RABBITS! RABBITS! Does with litters, \$4; does, \$2. New Zealand, Flemish Giants, Japanese, New Zealand Whites and American Blues. Away under priced. A full line of rabbit medicines and supplies. We sell for less. Poultry & Pet Stock Exchange, 142 North Brand Blvd.

140 PULLETS FOR SALE—Thoroughbred S. C. White Leghorn pullets, 3 to 4 months old, \$1.25 each. Do not call Saturday. 1130 E. Colorado Boulevard. Phone Glendale 189-R.

GOATS FOR SALE—A few out of my splendid herd of choice Toggenberg and Saanen goats. Heavy milkers, some registered. Also handsome kids. California Swiss Goat Ranch, 1029 N. Pacific Avenue, Near Dryden. Phone Glendale 364.

FOR SALE—Four stands bees. J. W. Ashton, 322 El Bonito, Glendale.

FOR SALE—One Holstein Jersey cow, young. Cheap. 4112 West Park Avenue. Filling's place.

FOR SALE—Good all around work horse. Will work single or double. Berkshire brood sows, 7 months old. Also second-hand galvanized iron storage water tank and old lumber. Phone Glendale 2288-J. R. F. D. No. 1, Box 57.

FOR SALE—6 Brown Leghorn pullets and one cockerel, 8 months old. Also Roller and Warbler canaries. Cheap for immediate sale. Phone Glendale 1475-J.

FOR SALE—Rabbits. New Zealand; 2 does, 1 buck and 8 young half grown. One 6-compartment hutch. Cut price. Call 120 West Elk Avenue, Glendale.

FOR SALE—Two Toggenburg goats. Just fresh. Reasonable. Inquire A. T. McBeth, 320 East Broadway.

BABY CHICKS—BABY CHICKS All varieties today. We sell for less. Poultry & Pet Stock Exchange, 142 North Brand.

FOR SALE—Rabbits. Pedigreed stock. New Zealand Red fids cents and up. Also electric washing machine, metal cylinder, 6 sheet capacity; electric Simplex mangle. Both in splendid condition. Reasons for selling, going away. Glendale 121-R or 615 S. Verdugo.

SPLENDID PENS of Buff Leghorn and White Orpington young hens. These birds are all laying and quoted at a low price. We sell for less. Poultry & Pet Stock Exchange, 142 North Brand Blvd.

FOR SALE—Beautiful red and cream Persian kittens. Call 625 W. California.

FOR SALE—New Zealand rabbits. Fine bred stock. First class hutches reasonable. 1136 East Colorado. Phone 488-W.

FOR SALE—Good milk goat. Phone 1356-J.

FOR SALE—Chickens, baby turkeys; also old turkeys. 423 E. Elk.

CANARIES FOR SALE—A choice lot at one-half city prices. Trained German Rollers, Hartz Mountain Warblers. See our display before you buy. Also cages and canary supplies of all kinds. We sell for less. Poultry & Pet Stock Exchange, 142 North Brand Boulevard.

FOR SALE—Feed cutter, Planet seeder, Rhode Island Red laying hens, \$2.50 each. 1239 E. Harvard. Phone 488-J.

MOTOR VEHICLES

FOR SALE—1918 Maxwell touring car in excellent condition. Five good tires. Best buy ever offered. Call 1101 E. Broadway after 5 p. m.

FOR SALE—Maxwell roadster, good mechanically. Snap for quick return. 131 S. Louise. Call after 5 p. m.

FOR SALE—1915 Ford touring. 423 E. Elk Street.

FOR SALE—1917-18 Ford touring. Fully equipped with all accessories and conveniences. New top, new paint. Mechanically good as a new machine. Tires in first class shape. Price \$650. 122 W. Chestnut Street.

FOR SALE—1918 Oakland touring car, completely overhauled; new paint, new tires. Nash Agency, 207 N. Brand Blvd. Phone Glendale 1678.

FOR SALE—1919 Dort touring car, completely overhauled, good paint and tires. This car is guaranteed. Nash Agency, 207 N. Brand Blvd. Phone Glendale 1678.

FOR SALE—1918 Ford touring, good condition. Only run 1900 miles. 333 West Palmer Avenue.

FURNITURE

FOR SALE—One reclining chair, one sanitary couch, 5 pictures, paintings, 1 French mirror, 1 library table, 1 kitchen table, 1 chair, 1 Radiant-heat heater, 1 Hot Spot heater. 403 Fairview Ave.

FOR SALE—One dining room set, one white enamel bedroom set and three pieces of Mission furniture. Phone Glendale 2062-3.

SPECIAL VALUES IN FURNITURE AND RUGS

A ten-floor metropolitan assortment located within easy reach by auto or rail—low overhead expense and factory buying enable us to offer excellent values—careful delivery in our own trucks—plenty of places to park your car nearby and shop in comfort—it will be pleasant and profitable to come—courteous attention—careful service.

PASADENA FURNITURE COMPANY
Raymond and Holly Pasadena

FOR SALE—Dining room set, table and six chairs. Varnished oak. 1843 Gardena. Phone Glendale 976-J.

FOR SALE—At a bargain, a piano. 230 N. Belmont.

FOR SALE—Almost new mahogany desk, fiber rug 9x12, handsome porch set of reed furniture. Phone Glendale 538.

FOR SALE—At a bargain. Will sell the first \$225 five piece beautiful old ivory bedroom suite at \$150. Beautifully designed. Don't miss this. Direct from the factory. Taylor Bros. Furniture Company, not incorporated. 520 E. Broadway. Phone Glendale 62.

FOR SALE—4 dining room chairs and one rocker. Inquire 369 Myrtle Street or phone Glendale 688-J.

MISCELLANEOUS

FOR SALE—Goat fertilizer, one of the best fertilizers known. Glendale 364. 1029 N. Pacific Avenue, facing Palm Avenue.

FOR SALE—Garden tools, hand plow, lawn mower, chicken coops, wire fencing, one five and six foot. 411 Patterson Ave.

FOR SURVEYING and subdividing Call Glendale 469.

FOR SALE—Chicken fertilizer in sacks. Call at 217 W. Lomita Avenue. Phone Glendale 1189-R.

KILLS-ALL, as its name implies, kills everything in the bug line while being perfectly harmless to mankind or animals. It's the wonder-worker of the century. It causes ants to disappear like magic and there is no danger to the youngsters. Contains no arsenic or other poison injurious to animal life. It utterly destroys aphids of all kinds, thrip on all plants and shrubs, scale of all kinds, mealy bug, mildew on roses. One trial will convince you. Poultry & Pet Stock Exchange, 142 North Brand Blvd.

FOR SALE—For a few days, orange honey in five gallon cans at ton rate. F. R. Buchanan, 242 N. Orange St. Phone Glendale 750-M.

HOME MADE cakes, pies and salads made to order at the White Inn, corner Glendale Ave. and Broadway. Phone Glendale 650-W.

FOR RENT—For a few days, orange honey in five gallon cans at ton rate. F. R. Buchanan, 242 N. Orange St. Phone Glendale 750-M.

HOME MADE cakes, pies and salads made to order at the White Inn, corner Glendale Ave. and Broadway. Phone Glendale 650-W.

FOR RENT

FOR RENT—By Saturday p. m., cottage, 3 rooms kitchenette, closets, front and back porch, gas, electric lights, water paid, use of phone and bathroom. Rent reasonable. 1137 East Elk.

FOR RENT—Furnished half of double bungalow. Three rooms and bath, two disappearing beds, two large closets, lawn, flowers and cellar. Close to car. 332 W. Colorado. Phone Glendale 941-M.

BOARD AND ROOM—Special care to elderly people and semi-invalids. Pleasant rooms. 1293 S. Boynton. Phone Glendale 1475-W.

FOR RENT—FURNISHED. Three room apartment, sleeping porch. Laundry trays. Modern. 745 East Wilson.

FOR RENT—4 room furnished apartment; newly furnished. Fine location. One month only, \$50, including garage. E. P. Hayward, 139 N. Brand. Glendale 250.

FOR RENT—Furnished room and garage, very reasonable. Gentleman preferred. 512 Fairmont Avenue, Glendale.

FOR RENT—Furnished. Beautiful 7 room bungalow. Large ornamental grounds. 601 S. Adams.

FOR RENT—Furnished rooms with board; also sleeping porch. Phone Glendale 327-W. 118 East Garfield Avenue.

FOR RENT—Clean new modern 3 room apartment. Disappearing bed. Unfurnished. Adults. Broadway and Louise Street. Rent \$35, water paid. Stoddard or Kranz, 219 E. Broadway, Glendale 105.

FOR RENT—Furnished or unfurnished rooms. Also upstairs room with light housekeeping privileges. 610 N. Kenwood. Glendale 2004.

FOR RENT—Large garage. Inquire Box 599. Evening News.

FOR RENT—Seven room house and garage. 1304 N. Maryland. Phone Glendale 1536 or inquire Apartment 8, De Luxe Apartments.

WANTED

OUR CLIENT wants to rent a well furnished home for the summer. Lady, grown son, man servant, car. Will pay several months in advance. Give location and price—SEE ME. EZRA F. PARKER, 117 S. Brand Blvd., Glendale.

WANTED—Competent woman for cooking and housework or girl for housework and to assist with cooking. Write giving full particulars. Box 30, Glendale Evening News.

I WANT to buy a five room modern bungalow, not more than two blocks from red car line, from owner only for cash. What have you? Box 900, Evening News.

WANTED—Sewing. Children's clothes, handwork and fancy darning a specialty. Phone Glendale 661-M.

WANTED—Man with or without horse to keep up small place close in. Route 5, Box 655. Phone Glendale 579-J.

WANTED—I have a client to purchase a 4 room California house close to the P. E. car line for about \$2500. Will pay about \$500 cash and balance terms. Phone or write Harry M. Miller, 114 E. Broadway. Phone Glendale 514.

WANTED—Boys to carry papers. Good pay; no collecting. A good proposition. Apply 100 S. Maryland before noon or after 4:30 p. m.

WANTED TO RENT—5 or 6 room unfurnished bungalow. Phone Glendale 2231-R.

TEACHER of band and orchestra instruments; mandolin and guitar. Anyone wishing instruction call R. E. Bach, Glendale 2216-R.

WANTED—Responsible party wishes to rent a piano indefinitely. Must be reasonable. Address Box 80, Glendale Evening News.

WANTED—To rent unfurnished flat or small bungalow. Couple, no children. Box 42, Care Glendale News.

WANTED—Young man for general work on Saturday. Also good steady man for garden work; steady position. Phone Glendale 2288-J. R. F. D. No. 1, Box 57.

WANTED—To buy bees. Phone Glendale 2137-W.

WANTED—High class carpenters and body-makers. Apply Superintendent, MORELAND MOTOR TRUCK COMPANY, Burbank, California.

WANTED—Boys about 17 years old to tie bundles, etc., for the Glendale Laundry.

WANTED—To rent or lease five room unfurnished cottage or bungalow for one year or more. Not over \$30 per month. Address Box 4, Glendale Evening News.

WANTED—Rough dry laundry by the piece, 40 cents a dozen. 703 E. Maple. Glendale 1290-W.

ELDERLY MAN desires comfortable room with breakfast and dinner in private home. Phone Garvanza 953 or address Box 15, Evening News.

WANTED—Woman to do washing, ironing and cleaning. Address Box W. N., Glendale Evening News.

WANTED—Woman for general housework. Go home nights. Phone Glendale 225-J after 10 a. m.

SPECIAL dinner or luncheon parties served at the White Inn, corner Glendale Ave. and Broadway. Phone Glendale 650-W. A private room for card parties.

LUNCHES for parties put up at the White Inn, Cor. Glendale Ave. and Broadway. Phone Glendale 650-W.

TRUCK SERVICE, Harry's Truck Co., 114 E. Broadway, Glendale 180.

MEN WANTED—FOX-WOODSUM LUMBER COMPANY.

WANTED—Few more table boarders by the day or week. Home cooking. Rates reasonable. 310 North Jackson Street. Phone Glendale 227-W.

CAN START THE PAINTING or Decorating on your house any time. Have several extra good painters and paper-hangers. Lexie H. Allison, 416 West Maple. Phone Glendale 834.

WANTED—Experienced grocery clerk. Must have good reference. Apply Basket Grocery, 108 E. Broadway. Can also call after 6 p. m. at home, 215 W. Chestnut.

WANTED—Reliable woman to work by the day, five or six days a week in one home. Private family. Cleaning, laundry and general work. Prefer one who lives in Glendale or in neighboring vicinity. Wages by day, week or month. Steady employment for suitable woman. Address Box 22, Evening News.

WANTED—Teamsters and laborers. Apply Eddy & Daley, 710 East Broadway.

WANTED—Anyone wanting yard or garden work done, inquire G. S. Hess, 106 S. Cedar Street, Glendale.

Andy's Express & Transfer. Quick service. Phone Glendale 1901. 109 1/2 South Brand.

FOR SURVEYING and subdividing Call Glendale 469.

FOR REPAIR WORK on Plumbing and Stoves, ring up Young, the Repair Man, Glendale 276-R. I also sharpen and adjust lawn mowers and do repair work in general. Work guaranteed.

CONTRACTOR AND BUILDER

Garages and Bungalows My Specialty. See R. B. Hammond 508 N. Isabel

IF YOU WANT to buy or sell poultry, phone Glendale 551-J.

TRUCK SERVICE, Harry's Truck Co., 114 E. Broadway, Glendale 180.

MONEY WANTED—We have several clients who desire loans. Good safe investment. Phone Glendale 51. Bentley-Schoeneman Lumber Company.

SINGER AGENCY Sewing machines, repaired, rented and sold on easy terms. Glendale 90

Fire Insurance

We Have 4 A-1 Good Companies

MILLER'S NATIONAL UNION, UNITED FIREMANS, NETHERLANDS, PITTSBURG UNDERWRITERS.

We have a lady expressly to write them up in first class shape. We make adjustments quickly. We have been in the fire insurance business 23 years and never raised our price. We are writing one hundred thousand a month. Remember your house will stand 1-3 more insurance now than it would 1 year ago. Protect your family.

Also
AUTO INSURANCE, COMPENSATION INSURANCE, AND BURGLAR INSURANCE

H. L. Miller Co.

109 S. Brand Glen. 853



TONIGHT

Popular Request Day
WILLIAM S. HART

"The Narrow Trail"

TOMORROW

CHARLES RAY

PARIS GREEN

HAROLD LLOYD

Bumping Into Broadway

Also Cartoons and Pictographs

MATINEE EVERY DAY—2:30
Two Evening Shows, 6:45, 8:45

Mary Searcy Ball
Piano and Organ

Studio: 516 N. Central Ave.
Phone: Glendale 1269-W.



Cleaners and Dyers

110 East Broadway
Phone Glendale 155, Main 5

Phone Glendale 154

—For—
Tubercular Tested Raw Milk, Pasteurized Milk and Cream, Fresh Buttermilk, Cottage Cheese and Butter, Delivered Fresh Morning and Evening.

Glendale Creamery Co.
755 West Doran Street
Established 1907

NEW RATE

Japanese Day Work
Increased Rate:

All Day (8 hours)	\$4.50
Half Day (4 hours)	2.40
One Hour	.60

Repairing Storage
Vorwerk & Vickers
Garage
Open From 7 a.m. to 11 p.m.
137 N. Maryland Glendale

Wm. Prendeville Jos. Prendeville
Phone 417 Phone 416-J
PRENDEVILLE BROTHERS
Plastering Contractors
Exterior Work and Patching
A Specialty
335 Patterson Ave., Glendale, Cal.

GLENDALE SHAMPOO PARLORS
Misses Gould and Cartwright,
Proprietors
Marinello Toilet Preparations
Hair Work a Specialty. Appointments
Phone Glendale 670
103-A N. Brand, Rudy Bld., Glendale

Don't throw away a broken metal article—Take it to the
Glendale Welding and Brazing Co.
217 E. Bdwy. Glen. 2000-W

CESSPOOLS

Arrange for Your Cesspool
at 131 S. Brand
Glendale 408

Personals

Mr. and Mrs. Harclerod are occupying a home in Virginia Place. Mrs. Harclerod was formerly Miss Essie Anderson and has many friends here.

Mr. and Mrs. Carl Hollingsworth are now living in Fullerton on property they purchased after selling their home in Virginia Place, this city.

Mrs. E. E. Redfern, of South Grand avenue, Los Angeles, is spending a few days with her sister, Mrs. H. R. Sibley, of 323 West Windsor Road.

Mr. and Mrs. M. J. Murchison and family of 320 West Lomita are moving Saturday morning to Venice where they have taken a house for a year.

Mrs. Mart Karicofe and daughter, Maud, of Mariana, Ark., and Mrs. Minnie Baker of Los Angeles, are guests of Mr. and Mrs. Thos. Hull, of 217 East Chestnut.

Mrs. E. B. Hall of Mariposa street who returned not long ago from Murietta Hot Springs reports considerable benefit from her stay. She went to recover from the effects of a hard cold.

A grass fire at 220 North Orange called out the fire department yesterday noon, but no water was thrown. Two of the firemen remained on guard until the fire burned itself out.

Dr. Henry R. Harrower, who is a member of the faculty of the Loma Linda Medical School, is at Loma Linda attending the graduation exercises. He is expected home tonight.

Dr. Jessie Russell is leaving Saturday morning for the East to attend the national convention of the Congress of Mothers and P.-T. A. She expects to return in the course of a few weeks.

Mr. and Mrs. John F. Harden of 346 Vine street and daughter, Margaret, are planning to join a party of friends from Eagle Rock on a week-end camping excursion to San Gabriel Canyon.

Yesterday was the first working day since January 1st that no building permit was issued in Glendale. But there will be many more coming, which will more than make up for this slight lapse.

Miss Pauline Hamilton is expected to return June 7th and spend the summer with her parents, Mr. and Mrs. W. W. Hamilton, 327 West Garfield, Iowa. She will go back to Cedar Rapids, Iowa, in the fall.

Mr. and Mrs. R. L. McCourt and family will spend the week-end at the cottage they have purchased on the island at Balboa where they expect to spend all their week-ends and their summer vacation.

C. B. Guthrie has had built a small real estate office of hollow tile at the northeast corner of Brand and Los Feliz Road and placed O. E. Von Oven, a well-known Glendale citizen in charge.

R. J. Westwood of North Maryland avenue, who has been at the Good Samaritan Hospital in Los Angeles for the past two weeks taking the rest cure, is at home again and friends say he has been much benefited.

Mr. and Mrs. C. L. Peckham of North Central avenue, their daughter and son-in-law, Mr. and Mrs. Ennis, Gladys Peckham and Vassar Peckham spent Saturday and Sunday at Mount Lowe, returning Sunday night.

Mrs. M. Thede's home at 225 N. Isabel was sold recently, through the S. Berkebile Agency, to M. A. Stumpf, of Los Angeles, who will engage in the sale of auto accessories in Glendale and may put up a building for the purpose later on.

Mr. and Mrs. William Tiffany of 129 West Los Feliz Road are planning a week-end auto trip to Strathmore to visit their son and daughter, Mr. and Mrs. Tiffany and children. They will be accompanied by Mrs. Tiffany's mother, Mrs. Hapgood.

Joseph Lindauer of Hollywood, who is working in Glendale, fell from a pile of lumber yesterday and was seriously injured, the ligaments of his back being wrenched and torn. He was rushed to the Glendale Sanitarium hospital for treatment and is progressing favorably.

W. S. Price, wife and son have moved into the property recently purchased at 121 South Isabel. They have been living in Hawthorne, but were residents of Glendale in 1910, '11 and '12, at 328 West Elk, moving away in the latter year. Mr. Price says he notes many changes in the city since he lived here eight years ago, but it is good to get back.

Mr. and Mrs. Francis J. W. Henry of Arden avenue are this week entertaining Mrs. Ray, of Hollywood, whom they knew in San Francisco before coming to Glendale. Wednesday Mrs. Ray's daughter and her grand-daughter, Miss Charlotte Merriam, were entertained by the Henrys. Miss Merriam is a film actress and plays feminine leads with the Christy Comedy Company.

Dr. T. C. Young left Wednesday evening for Fresno to attend the regular meeting of the State Eclectic Medical Society. He is expected to return today.

Mr. and Mrs. Blake Franklin and several other residents of Glendale were guests at an all-day outing given its employees at Long Beach by the Pacific Mutual Company Thursday.

Elder J. W. Christian, wife and son motored to Visalia yesterday to attend the big Seventh-day Adventist camp meeting there. Prof. W. W. Ruble and wife and Prof. W. C. Kaley and wife departed this morning by auto to the same city and for the same purpose.

Elder W. F. Martin delivered the commencement address to the graduating nurses at the Paradise Valley Sanitarium on Sunday evening last. On Tuesday he left for a tour of the states of the Middle West to attend summer camp meetings, the first one at Huron, South Dakota.

The Busy Bee Club, composed of members of the Holy Family Catholic Church, gave one of its popular whist parties Wednesday evening at the White Inn. There was a large attendance and a delightful social evening was spent by all present. High scores were made by Mr. Coker and Mrs. Fuller.

Mr. and Mrs. T. Hammond of E. Cypress and their friends, Mr. and Mrs. Will Chesbro and Mr. and Mrs. Aronson, of Los Angeles, are planning a week-end camping trip to Valima not far from Palmdale. They have been there before and say a big stream and lovely surroundings make it an ideal place to camp in the open. They will travel by auto via Mint Canyon.

Wilbur Francy and his brother-in-law, Louis Nunn, are leaving Saturday to visit friends in Chicago and elsewhere in the middle west and also to go to Detroit where each man will buy an automobile. They go to Detroit because they cannot get deliveries here of the cars they want and also because they would like to have the pleasure of using the machines there. They plan to be gone about six weeks.

It will be remembered that hostesses of the card club to which Mr. and Mrs. R. L. Holland belong recently decided to celebrate their husbands' birthdays and that in accordance with this pact Mr. Holland's birthday was very pleasantly observed by the crowd. The next celebrant decided that he wanted a picnic and accordingly the club motored to Orange County Park last Sunday where they enjoyed a dinner which included chops broiled over an open fire and a lot of other good things carried along for the feast. Mrs. Holland has this week entertained at luncheon friends from St. Louis, Mrs. Hoffman and daughter, Clara, who have been spending the winter in Los Angeles. Mrs. Sherer of Los Angeles was also a guest. The Hollands had hoped to spend the coming week-end at Camp Baldy, but fear they will be unable to carry out the plan.

THORNYCROFT SANITARIUM

1100 E. Windsor Road
AGED PEOPLE A SPECIALTY
Telephone Glendale 70

WE KNOW HOW AND DO IT
Glendale Carpet and Mattress Renovating Works

1419 S. San Fernando Road, Glendale
Old mattresses made like new. Rugs cleaned and sized. Fluff Rugs made from your old carpet, also Rag Rug weaving and rugs dyed. Mattresses for sale.
PHONE GLENDAL 1928

Hardwood Floors

OLD FLOORS SCRAPPED
Floors Laid, Scraped and Finished
Estimates Cheerfully Furnished
H. R. BOWERS FLOORING CO.
112-A E. Broadway, Glendale 1859

Morgan Bros. Transfer

Formerly
JESSE'S EXPRESS
Glendale 75 109 B E. Broadway

VERDUGO RANCH

W. P. BULLOCK, Prop.
NATURAL JERSEY MILK
Milked and Bottled on our own Farm
Coffee Cream—Whipping Cream
Night Deliveries in Glendale
No Telephone Connection



SATURDAY

Is The Day They Come And Bring All The Family To The

Palace Grand Theatre

It's the day they cast dull care away and come to Glendale's amusement center for an hour or two of relaxation and enjoyment.

Tomorrow, May 29

Charles Ray in "Paris Green"

His Latest And Best Picture

Also HAROLD LLOYD'S 2-Reel Comedy Success
"BUMPING INTO BROADWAY"

Matinee at 2:30

Two Evening Shows, 6:45 and 8:45

DEATH OF DR. KLINGERMAN

Dr. George Elliott Klingerman, widely known as a physician and surgeon, died at his home at 219 East Palmer avenue, Thursday evening, May 27, 1920, at 7 o'clock. He was born in Pennsylvania thirty-four years ago and came to California in 1910. For some time he was at the St. Helena Sanitarium, a part of the time as superintendent. He then went to Oakland where he built up a large private practice. A year ago he succumbed to an attack of influenza from the effects of which he never recovered. Through his church and professional connections he was widely known on this coast and in his death it is felt the profession has lost a man of great promise. He leaves a wife and one child, little Taylor Klingerman, a sister, Mrs. Frye, of Loma Linda Sanitarium, and many relatives and friends in the East.

Funeral services, which will be conducted by Dr. Thomason and Rev. R. W. Munson, Chaplain of the Glendale Sanitarium, will be held at the Jewel City Undertaking Parlors Saturday afternoon at 2:30 o'clock, the remains to be placed in the mausoleum at Forest Lawn Memorial Park.

DEATH OF J. E. LYON

Joah E. Lyon passed away at his late residence, 619 North Maryland avenue, May 28, 1920. He was a native of Illinois but a resident of Glendale for the last six years. He leaves his wife, and two children, Miss May Lyon and Arthur Lyon. He is also survived by two sisters and four brothers one of whom, E. W. Lyon, resides with his family at 214 North Louise street.

Funeral services will be held from the Little Church of the Flowers, Forest Lawn Cemetery, at 3 p. m., May 29, 1920., L. G. Scovern in charge.

Rev. W. E. Edmonds, of the First Presbyterian Church, will officiate.

DEATH OF MRS. ZIRNITE

Mrs. Martha F. Zirnite passed away at the home of her daughter, Mrs. Ada F. Taylor, May 25, 1920. She was a native of Kentucky but had resided in Glendale and vicinity for the last 12 years.

Funeral services will be held from the Little Church of the Flowers, Forest Lawn Cemetery, Saturday, May 29, 1920, at 2 p. m., L. G. Scovern Co. in charge.

Advertise it, or advertise for it in the Evening News.

A BECOMING HAT

will enhance your looks and give your entire costume a better appearance

You will be interested in our line of

Summer Millinery

which includes

Sport Hats
Sailors
Milans

Maline Hats
Georgette Crepes
Flower-Trimmed Straws

AT SPECIAL PRICES

Mrs. Grace S. Yarbrough

105 S. Brand Blvd.

Glendale 293-W

MRS. HOSKYN SURPRISED

The ladies of the Sisterhood class of the First Methodist Sunday School gave a pleasant surprise to Mrs. E. Hoskyn at her home, 234 North Jackson street, Thursday afternoon. The occasion was an expression of their appreciation of her services as teacher of the class for the past two years. The class present was a beautiful glass flower basket filled with white lilies. A very pleasant hour was spent together. At the close cake and sherbet was

served. The following ladies were in attendance: Mesdames J. R. Turner, Harwood Bristow, Mark Russell, N. C. Jordan, Pearl Miles, N. E. Hawks, J. Jeffries, C. W. Spickerman, Kate Drug, Hester E. Noland, A. P. Torrey, J. F. Swisher, Kathryn Claycomb, Ray Cecil, Mary M. Bruce, Mary Marsh, Z. T. Boicourt, Carrie Harne, Lucretia B. Warner, B. F. Geiger, C. R. Hallett, C. W. Ingledue.

Advertise it, or advertise for it in the Evening News.

ORDINANCE NO. 380

AN ORDINANCE OF THE BOARD OF TRUSTEES OF THE CITY OF GLENDALE TO COMPEL THE OWNER, LESSEE, OR OCCUPANT OF BUILDINGS, GROUNDS OR LOTS TO REMOVE DIRT, RUBBISH, WEEDS AND RANK GROWTHS FROM THE SIDEWALK OPPOSITE THERETO, AND FROM THE BUILDING OR GROUNDS; AND ON HIS DEFAULT, AFTER NOTICE AS THEREIN PROVIDED, TO AUTHORIZE THE REMOVAL OR DESTRUCTION THEREOF BY THE STREET SUPERINTENDENT OF SAID CITY, AT THE EXPENSE OF SUCH OWNER, LESSEE OR OCCUPANT, AND PRESCRIBING THE PROCEDURE TO MAKE SUCH EXPENSE A LIEN UPON SUCH BUILDINGS OR GROUNDS.

The Board of Trustees of the City of Glendale do ordain as follows:

Section 1. Whenever the public interest or convenience may require, the Board of Trustees of the City of Glendale is hereby authorized and empowered to compel the owner, lessee or occupant of buildings, grounds or lots to remove dirt, rubbish, weeds and rank growths from the sidewalk opposite thereto, and from the building or grounds; and on his default, after notice as herein provided, to authorize the removal or destruction thereof by the Street Superintendent of said City, at the expense of such owner, lessee, or occupant, and to make such expense a lien upon such buildings or grounds in the manner and under the proceedings hereinafter prescribed.

Section 2. Before ordering any work done which is authorized by Section 1 of this Ordinance, the Board of Trustees shall pass a resolution of intention so to do, and describing the work, and the property to be assessed therefor.

Said resolution shall also contain a notice of the day, hour and place when and where any and all persons having any objections to the proposed work may appear before the said Board of Trustees and show cause why said proposed work should not be done in accordance with said resolution; said time shall not be less than twenty days nor more than forty days from the date of the passage of said resolution.

Said resolution of intention shall be published by one insertion in some newspaper of general circulation published and circulated in the City of Glendale, and which publication shall be at least ten days before the time fixed for hearing objections to the proposed work as above provided.

The Board of Trustees may include in one proceeding, under one resolution of intention, any of the different kinds of work mentioned in this Ordinance, and on different buildings, grounds or lots, or portions thereof in the City of Glendale, whether contiguous or not.

Section 3. After the adoption of the resolution of intention the Street Superintendent shall cause to be conspicuously posted in front of each separate building, ground, or lot, or portion thereof, liable to be assessed for said work, notices of the passage of said resolution.

Said notices shall be headed "Notice to Remove Dirt, Rubbish, Weeds and Rank Growths," in letters not less than one inch in length, and shall, in legible characters, state the fact of the passage of the resolution of intention, its date, and briefly describe the work proposed, and refer to the resolution for further particulars. Said notices shall also contain a statement of the day, hour and place when and where any and all persons having any objections to the proposed work may appear before the Board of Trustees and show cause why said proposed work, or any portion thereof, should not be done in accordance with said resolution.

In every case the posting of all such notices must be completed at least ten days before the day set for hearing objections as herein provided.

Section 4. The City Clerk shall immediately upon the passage of said resolution of intention mail, postage prepaid, to each property owner whose property is to be assessed to pay the costs and expenses of said work, at his last known address as the same appears upon the tax-rolls of said City, or if the municipal taxes for said City are collected by the County Tax Collector of Los Angeles County, then as such address appears upon the assessment of said property upon the tax-rolls of said Los Angeles County, or when no address so appears, to the general delivery, a postal card containing a notice which shall be substantially in the following form (filling blanks):

"You are hereby notified that on the — day of —, 19—, the Board of Trustees of the City of Glendale, California, by virtue of Ordinance No. — of said City, passed a resolution of intention, No. —, to compel the removal of dirt, rubbish, weeds and rank growths from certain property assessed to you in the City of Glendale, situated upon — Street, and upon your default in so doing as in said Ordinance provided, providing for the removal of the same at the expense of the owner of said property and making such expense a lien upon such property. You are hereby referred to said resolution for further particulars.

"— City Clerk."

If any buildings, grounds or lots mentioned in said resolution of intention be assessed to "unknown owners" on the tax-rolls of said City, or on the tax-rolls of said Los Angeles County, if said Los Angeles County collects the municipal taxes for said City of Glendale, no postal cards containing such notices need to be mailed to the owners thereof. The City Clerk shall, upon the completion of the mailing of said postal cards, file in the office of the Street Superintendent an affidavit setting forth the time and manner of the compliance with this requirement; provided that the failure of the City Clerk to mail said cards, or the failure of the property owners to receive the same, or the failure of the Superintendent of Streets to post the notices of the passage of said resolution of intention, shall in no wise affect the validity of the proceedings or

prevent the Board of Trustees from acquiring jurisdiction to order the work; provided, however, that the Board of Trustees may require affidavits to be filed showing the posting and mailing of notices before it adopts the resolution ordering the work.

Section 5. Any owner or other person having any interest in any buildings, grounds or lots liable to assessment, shall have the right to have the work done in all respects similar to the work described in said resolution of intention as to any such building, ground, or lot and to the satisfaction of the Street Superintendent, and any time after the passage of said resolution of intention and at least one day prior to the time fixed in the resolution of intention, to appear before the said Board of Trustees and show cause why said proposed work should not be done in accordance with said resolution, and upon a showing being made to said Board of Trustees at the time and place specified in said resolution for hearing the same, or at any subsequent hearing to which the same may be adjourned by said Board of Trustees, that any such work has been done and performed to the satisfaction of said Street Superintendent and in accordance with the description of such work as to any particular building, ground, or lot described in said resolution of intention, then, and in that event the Board of Trustees shall so find and determine, and no further proceedings shall be taken as to any such property under said resolution of intention.

Section 6. At any time not later than the hour set for hearing objections to the proposed work in the resolution of intention as provided in Section 2 hereof, any owner or other person having any interest in any property liable to assessment for the work described in the resolution of intention may make written protest against the proposed work. Such protest must be in writing and be delivered to the City Clerk, and no other protest or objections shall be considered. At the time set for hearing protests, or at any subsequent meeting to which the same may be adjourned, the Board of Trustees shall proceed to hear and pass upon all protests so made and its decision shall be final and conclusive, and if the Board of Trustees sustains such protests no further proceedings shall be taken under said resolution of intention as to that portion of the work to which such protest so sustained relates.

If no protests or objections in writing have been delivered to the City Clerk up to the hour set for hearing specified in the resolution of intention, or when a protest shall have been found by the said Board of Trustees to be insufficient, or shall have been overruled, immediately thereupon the Board of Trustees shall be deemed to have acquired jurisdiction to order the proposed work, which shall include any and all portions thereof described in the resolution of intention which have not already been performed to the satisfaction of the Street Superintendent as herein specified, or as to which protests have not been sustained by said Board of Trustees.

The work described in the resolution of intention shall be deemed separate and distinct as to each separate building, separate piece or parcel of ground, or separate lot or portion thereof, as described in said resolution of intention and the discontinuance of the proposed work either by reason of the fact that the same has already been performed prior to the time fixed for hearing objections to the same, as above specified, or the sustaining of any protest as to any such separate building, separate piece or parcel of ground, or separate lot or portion thereof, shall not be deemed to affect the jurisdiction of the Board of Trustees to order the remainder of the work described in the same resolution of intention to be done in accordance with the resolution of intention.

Section 7. After final action has been taken by the Board of Trustees and all protests or objections have been disposed of, or in case no protests or objections have been received, the Board of Trustees shall adopt a resolution ordering the Street Superintendent to have done all the work described in the resolution of intention which has not already been performed to the satisfaction of the Street Superintendent, or to which objections or protests have not been sustained by the Board of Trustees, as above provided.

Said resolution ordering such work to be done shall be published by one insertion in some newspaper of general circulation, published and circulated in the City of Glendale.

Section 8. At any time within five days from the date of the publication of the resolution ordering such work to be done any owner or other person having any interest in any buildings, grounds or lots liable to assessment, who claims that any of the previous acts or proceedings relating to said work are irregular, defective, erroneous or faulty, may file with the City Clerk a written notice specifying in what respect said acts and proceedings are irregular, defective, erroneous and faulty. Said notice shall state that it is made in pursuance of Section 8 of this Ordinance. All objections to any act or proceeding prior to the date of passage of the resolution ordering said work to be done, not made in writing and in the manner and at the time specified herein, shall be waived, provided, the resolution of intention to do the work has been actually adopted and published, as provided in this Ordinance.

Section 9. At the expiration of six days from the date of the publication of the resolution ordering the work to be done, if no written notice be filed with the City Clerk claiming any of the previous acts or proceedings relating to said work are irregular, defective, erroneous or faulty, as provided in Section 8 of this Ordinance, or if such written notice be filed and the objections thereby made be overruled by the Board of Trustees, the Street Superintendent shall proceed with such work, and cause the same to be done and performed, in accordance with the reso-

Chaffees

WHERE CASH BEATS CREDIT

**Two Stores
in
Glendale**

**Now
Operating
Glendale's
Acme**

Sixty-One Stores

FRESH VEGETABLES

Our buyers are constantly looking for the best in fresh fruits and vegetables. Our stands are always neatly trimmed with the seasonable goods, fancy lettuce, peas, beans, apples, bunch goods, onions, cabbage and many other products.

PASTRIES

An excellent assortment of delicious pastries and luscious flavored bread—a brand for every taste—made in our own sanitary bakery.

FRESH MEATS

Our meat markets are at your service. Our cases are always filled with choicest cuts of No. 1 steer beef, tender roasts and juicy steaks. If you prefer pork, lamb or veal, we have it. Cold meats for your lunches. Bacon, ham or ground meats. Meats for all meals.

BLANCHARD SALMON

A delightful fish, good for salmon loaf, croquettes and salads. A tall size tin

25c

ACME TEA

A little taste of fresh lemon in a big glass of iced tea—delightfully refreshing on a warm day. Hot weather is coming. Have a package on hand. It is the natural leaf, picked and packed in Japan for the Acme Stores. We are discontinuing the Acme label; that is why we offer such high grade tea at this price.

1/2-lb Package 33c

PHAIR'S PEACHES

These are not put up in a heavy syrup, but if you want them for pies, peach cobbler or fruit salad, they are an excellent buy.

2 1/2s, 27c; Doz., \$3

MAPO

Flavor your ice cream, cake icings, puddings and candy with Mapo, the maple flavor. Hot biscuits with hot Mapo syrup melting through them for breakfast.

Mapo, 1/2 lb 20c
Mapo, 1 lb 35c

OUTINGS

In spending your week-end in the salt sea breeze at the shore or in the cool, shady nooks of the hills, you will need a good lunch. Chaffee's will gladly provide you with the things you will need.

BUTTER

We are now packing our butter in our sanitary paraffined cartons. It's just a little item in

Chaffee Service

No Extra Charge

CALIFORNIA HOME PICKLES

An assortment packed in tins of convenient size for your trips. Pickles for everyone's purpose.

Sweet Sliced, 1s, 20c; Dills, 1s.....15c
Sweet Mixed, 1s, 20c; Dills, 2 1/2s.....25c
Sour Mixed, 1s.....15c

CHAFFEE'S IMPORTED OLIVE OIL

This pure virgin oil will add a tempting taste to your salad dressing. A trial will convince you of its superior quality.

4 1/2 oz 38c
10 oz. 73c
20 oz. \$1.35

H. G. CHAFFEE CO.

Sixty-One Stores in Southern California

We Close All Day, Monday, May 31. Buy Tomorrow

lution ordering the same, and he and his assistants or deputies, are hereby expressly authorized to enter upon private property for that purpose.

The Street Superintendent shall keep an account of the cost of such work on each separate building, grounds or lot, or portion thereof, and on the sidewalk opposite thereto, when such work is done, or both; and upon the completion of all the work described in the resolution ordering the work, he shall make an assessment to cover the sum due for the work performed and specified in such resolution ordering the work (including any incidental expenses), in conformity with the provisions of this Ordinance; or, if any direction and decision be given by said Board of Trustees on appeal, then in conformity with such direction and decision, which assessment shall refer to the resolution ordering the work, and shall briefly describe the work ordered and performed on each separate building, grounds or lot, or portion thereof, or both, and on the sidewalk opposite thereto, and the amount of such assessment on each separate building, grounds or lot, or portion thereof, assessed (if known to the Street Superintendent); if unknown, the word "Unknown" shall be written opposite the number of the grounds, lot or portion thereof, and the amount assessed thereon, the location of each building, and the number of each lot, or portion, or portions of a lot assessed, if it has a number, and if not, the legal description of such grounds, or lot, or portion thereof; and shall have attached thereto a diagram which the Board of Trustees shall direct the City Engineer to make, showing the location of each building, grounds, lot or portion thereof, or both, or sidewalk opposite thereto, on which work has been done, numbered to correspond with the numbers in the assessments, and said diagram shall be deemed to be a part of said assessment.

The expense of all work done on

any sidewalk shall be assessed and charged to the grounds, lot, or portion thereof, opposite to such sidewalk, and immediately adjacent thereto, and the expense of all work done on any lot or portion of lot, together with a proper share of the incidental expenses, shall be assessed against such lot or portion of lot.

Any error or mistake in the name or designation of the owner of any building, grounds, lot or portion thereof, shall not affect the validity of the assessment.

Section 10. As soon as said assessment is completed the Street Superintendent shall file the same, with the diagram attached thereto and made a part thereof as aforesaid, with the City Clerk, who shall give notice of such filing by one publication in a weekly newspaper of general circulation published and circulated in the City of Glendale. Said notice shall require all persons interested to file with the City Clerk their objections, if any they have, to the confirmation of said assessment, within ten days after the date of the publication of such notice, which date shall be stated in said notice.

Section 11. All objections shall be in writing and shall be filed with said City Clerk within the time prescribed in the notice required by Section 10, hereof. The City Clerk shall, at the next regular meeting of the Board of Trustees after the expiration of the time for filing objections, lay said assessment and all objections so filed with him, before the Board; and said Board shall hear all such objections at said meeting, or at any other time to which the hearing thereof may be adjourned, and pass upon such assessment, and may confirm, modify or correct said assessment, or may order a new assessment, upon which like proceedings shall be had, as in the case of an original assessment; or if there be no objections, the Board of Trustees shall, at any regular meeting after the expiration of the time for filing objections, confirm such assessment, and the action of the Board upon such objections and assessments shall

Closing Out Sale

—of—

FINE CANDIES

FINEST MILK CHOCOLATES 68c lb

In half or one-pound lots

All Other Candies Greatly Reduced

Caramel Shop, 106 E. Broadway

be final and conclusive in the premises.

Section 12. The City Clerk shall thereupon deliver to the Street Superintendent the assessment as confirmed by the Board, with his certificate of such confirmation, and of the date thereof. The Street Superintendent shall thereupon record such assessment and diagram in his office, in a suitable book to be kept for that purpose, and append thereto his certificate of the date of such recording, and such record shall be the assessment-roll. From the date of such recording all persons shall be deemed to have notice of the contents of such assessment-roll. Immediately upon such recording, the several assessments contained in such assessment-roll shall become due and payable, and each of such assessments shall be a lien upon the property against which it is made.

Section 13. The Street Superintendent shall, upon the recording of said assessment, give notice, by publication by one insertion in a weekly newspaper of general circulation pub-

The Glendale Book Store

PICTURE FRAMING

C. H. BOTT, Prop.
113 S. BRAND BOULEVARD

lished and circulated in the City of Glendale, that said assessment has been recorded in his office and that all sums assessed therein are due and payable immediately, and that the payment of these said sums is to be made to him within thirty days after the date of such publication, which date shall be stated in the notice. Said

(Continued on Page 7)

TO THE PEOPLE OF GLENDALE

U. S. Government Contributes to Decoration Day Exercises

DIRIGIBLE B-18

will circle **Forest Lawn Memorial Park** on Monday (Decoration Day) at 2 P.M. and shower flowers upon the Symbolic Grave, in honor of our heroes sleeping in foreign countries or beneath the ocean waves.

ALL ARE INVITED to participate and particularly the relatives and friends of our fallen soldiers and sailors

Dirigible will leave Naval Station at San Diego and return to its base without landing; therefore flowers must be placed on board at San Diego.

Bring or send a small bouquet of flowers to the Little Church of the Flowers at **FOREST LAWN MEMORIAL PARK** on or before next Sunday at 10 a. m.

A FAST AUTOMOBILE

will carry your offering to San Diego and your flowers will the next day be dropped from the skies upon the Symbolic Grave.

Following the scattering of flowers by the dirigible, a most unusual program will be rendered on Memorial Day by G. A. R., Ladies' Auxiliaries, American Legion and various Fraternal and Civic bodies.

Complete details can be secured from any of the above named organizations or from

FOREST LAWN MEMORIAL PARK

Los Angeles City Office
1219 Hollingsworth Building
Broadway 68 Broadway 6530

San Fernando Road and
Glendale Avenue
Glendale 89 Elliot 1701

Pasadena Office
227 Boston Building
Colorado 1006

Flowers for Memorials

Honor with flowers the memory of the loved ones who have passed on. Call Glendale 1030 right now and order flowers for Memorial day.

We specialize in cut flowers and floral designs for all purposes.

Nursery stock, ornamental and fruit trees, shrubs and vegetable and flower plants and seeds.

It will soon be too late for that garden—plant sweet potatoes, sweet corn, beans and melons, now.

Glendale Plant & Floral Co.

118 S. Brand Blvd. Glendale 1030

Phone Glendale 2

THE GLENDALE SANITARIUM AND HOSPITAL

GLENDALE, CALIF.

MEDICAL AND SURGICAL

Pacific Portal to Health
Battle Creek Methods—Modern Therapeutic Equipment

Hospital Separate from Main Building
GRADUATE NURSES
Both Ladies and Gentlemen

The methods include Hydro-Therapy, Dietetics, Massage, Manual Swedish and Curative Gymnastics, and all forms of electrical appliances, together with a thorough equipment for X-ray work.



ORDINANCE NO. 380

(Continued from Page 6)

notice shall also refer to the resolution of the Board of Trustees ordering the work for which said assessment was made, giving the number thereof, and shall also contain a statement that all assessments not paid before the expiration of said thirty days will become delinquent, and that thereupon ten per cent. upon the amount of each such assessment will be added thereto. When payment for any assessment is made, the Street Superintendent shall mark opposite such assessment the word "Paid," the date of payment, and the name of the person by or for whom the same is paid, and shall, if so requested, give a receipt therefor. On the expiration of said period of thirty days, all assessments then unpaid shall become delinquent, and the Street Superintendent shall certify such facts at the foot of said assessment-roll, and mark each such assessment "Delinquent," and add ten per cent. to the amount of each assessment delinquent.

Section 14. The Street Superintendent shall thereupon publish a list of the delinquent assessments by one insertion of such list in a weekly newspaper of general circulation in the City of Glendale, which list must contain a description of each parcel of property delinquent, and opposite or against each description, the name of the owner as stated in the assessment-roll, and the amount of the assessment, penalty, and costs due, including the cost of advertising, which last shall not exceed the sum of fifty cents for each building, grounds, lot, or portion thereof, separately assessed. The Street Superintendent shall append to and publish with said delinquent list a notice that unless each assessment delinquent, together with the penalty and costs thereon is paid, the property upon which said assessment is a lien, will be sold at public auction at a time and place to be specified in the notice. The time of sale must not be less than ten days, nor more than thirty days after the date of publication of said list, and the place of sale must be in, or in front of, the City Hall of the City of Glendale.

Section 15. At any time after such delinquency, and prior to the sale of any piece of property assessed and delinquent, any person may pay the assessment on such piece of property, together with the penalty and costs then due, including the cost of advertising, if such payment is made after the publication of the list of delinquent assessments. The Street Superintendent shall thereupon mark such assessment "Paid," as hereinbefore provided.

Section 16. On the day fixed for the sale, the Street Superintendent must, at the hour of ten o'clock A. M., commence the sale of the property advertised, commencing at the head of the list, and continuing in the numerical order of the property on said list until all are sold; provided, that he may postpone or continue these sales from day to day

until all of the property is sold. Each building, grounds, lot, parcel of land, or portion thereof, separately assessed, must be offered for sale separately, and the person who will take the least quantity of such property, and then and there pay the amount of the assessment, penalty and costs due, including one dollar to the Street Superintendent for a certificate of sale and the recording thereof, shall become the purchaser.

In case there is no purchaser for any property so offered for sale, the same shall be struck off to the City of Glendale as purchaser.

Section 17. After making the sale, the Street Superintendent must execute, in triplicate, a certificate of sale setting forth a description of the property sold, the name of the owner thereof, as given on the assessment-roll, that said property was sold for a delinquent assessment, (specifying the general nature of the work for which the same was made, and referring to this Ordinance), the amount for which such property was sold, the date of sale, the name of the purchaser, and the time when the purchaser will be entitled to a deed.

The Street Superintendent must file one copy of such certificate in his office, and deliver one copy thereof to the purchaser, or if the City of Glendale is the purchaser, to the City Clerk, who shall file the same in his office; and the Street Superintendent shall record one copy of such certificate in the County Recorder's office of the County of Los Angeles. On the filing of the copy of such certificate in the office of the Street Superintendent, the lien of the assessment shall vest in the purchaser, and is only divested by a redemption of the property, as in this ordinance provided. The Street Superintendent shall also enter on the assessment-roll, opposite the description of each piece of property offered for sale, a description of the part thereof sold, the amount for which the same was sold, the date of sale and the name of the purchaser.

Section 18. The Board of Trustees may, at the request of any interested party, or on its own motion, by resolution duly posted, set aside any assessment or assessments, as the case may be, and order a new assessment or assessments, to be made and issued, if in the opinion of said Board the assessment be invalid, and it may take all necessary steps and make and pass all necessary orders, resolutions or ordinances to re-assess and re-levy such assessment, and may re-assess and re-levy the same with the same force and effect as an original levy. The amount of the re-assessment shall not exceed the amount of the original assessment on each separate piece of property, described in the resolution ordering the work, under which the former assessment was made. Such re-assessment so made shall become a charge upon the property upon which the same is levied, notwithstanding any omissions, failure or neglect of any officer, body or person to comply with the provisions of this Ordinance, and notwithstanding the fact that the pro-



129 N. BRAND BOULEVARD, GLENDALE

Phone, Glendale 1161

ROBERT S. JENSEN, Manager.

MATINEE EVERY DAY AT 2:30
TWO EVENING SHOWS—6:45 AND 8:45

SATURDAY, MAY 29
CHARLES RAY IN "PARIS GREEN"

SUNDAY, MAY 30
BRYANT WASHBURN AND WANDA HAWLEY IN
"MRS. TEMPLE'S TELEGRAM"

MONDAY, MAY 31
"SKY EYE" AND CHARLIE CHAPLIN IN "THE RINK"

TUESDAY, JUNE 1
WILLIAM FARNUM IN "THE ADVENTURER"

WEDNESDAY, JUNE 2
TOM MIX IN "THE HEART OF TEXAS RYAN"

THURSDAY, JUNE 3
CLARA KIMBALL YOUNG IN "FOR THE SOUL OF RAFAEL"

FRIDAY, JUNE 4
MARGUERITE CLARK IN "A GIRL NAMED MARY" AND
ROSCOE (FATTY) ARBUCKLE IN "THE HAYSEED"

SATURDAY, JUNE 5
WALLACE REID AND BEBE DANIELS IN "SICK ABED"

Come and Dance

At Monte Vista Oak Gardens
SUNLAND, CAL.

Every Saturday Evening and Every
Sunday Afternoon and Evening

SPLENDID JAZZ BAND

ceedings of the Board of Trustees, or any officer of the City of Glendale or other person connected with such proceedings, may have been irregular, illegal, informal or defective, or not in full conformity with the requirements of this Ordinance. It is hereby declared to be the true intent and meaning of this section to make the cost and expense of the

work actually done or proposed to be done, in the exercise of the powers conferred upon municipalities of the Sixth class under Subdivision 16c of Section 862, of that certain Act of the Legislature of the State of California, entitled "An Act to Provide for the organization, incorporation, and government of municipal corporations." (Continued on Page 8)

Arabia has a plant the seeds of which produce an effect upon human beings similar to that of laughing gas.

Yager & Pope's Confectionery



**Creams
Cold Drinks
Confectionery
Fountain Specialties**

Why don't you bring her in? The rest of the boys are doing it. They seem to enjoy a tete a tete over a Soda or a Sundae in a cool, softly lighted booth or in the dining room.

Sit up to the fountain, if you prefer. It's a mighty popular place these hot days and evenings, and our fountain specialties and cold drinks of all kinds touch the right spot.

Any service that you can get at any fountain anywhere will be given you here; and we insist on courteous treatment to our patrons at all times.

Order Ice Cream for Sunday and Memorial Day Now.

Our Confectionery Department is still doing business, also. If you like nice, fresh Chocolates or any kind of Candy, try us.

111 S. BRAND

GLENDALE 1000-W

BUILDING

- is our work, and we put ourselves into it. We try to give the man who employs us the best there is in us.
- We draw on the previous experience we have had in planning and building hundreds of residences, business blocks and public buildings and put all our knowledge in this respect at the disposal of our client.
- We incorporate in the buildings we erect, ideas and features that we have learned by experience tend toward better and more artistic construction.
- We are careful to carry out to the minutest detail every term of our contract.
- We see to it that the material that goes into the buildings we erect, is exactly as specified in the contract.
- When you employ a contractor you want to feel that you are going to get a square deal.
- Does our past record and the many buildings that are standing in Glendale as monuments to our ability, satisfy you as to our efficiency and reliability?

*The Wise
Ones Are
Building
Now*

Chas. W. Kent & Son

131 South Brand

Glendale 408

Glendale Plumbing Co.

SANITARY AND HEATING
ENGINEERS

For Service and Satisfaction

Phone Glendale 408

131 S. Brand Blvd.

INDEPENDENT ICE CO.

Ice on Platform or Delivered.
Courteous Treatment.

OFFICE

106 East California St.

Phone Glendale 217

The question is: How far can old
Hi Cost fall before he gets hurt?

ORDINANCE NO. 380

(Continued from Page 7)

ations," which became a law the 13th day of March, 1883, and the amendments thereto, a lien upon the buildings, grounds, and lots upon which such work was done, by making a re-assessment thereof, notwithstanding that the proceedings of the Board of Trustees or other officers or agents of the City of Glendale or other persons connected therewith, may have been irregular, illegal or defective or not in full conformity with the requirements of this Ordinance. Such re-assessment shall be made and proceedings had thereunder, in the same manner as provided in this Ordinance, for the making of an original assessment.

Section 19. A redemption of any property sold for delinquent assessment hereunder may be made by any party in interest, at any time prior to the execution and delivery of a deed therefor, by paying to the Street Superintendent the amount for which the property was sold, and in addition thereto, twenty-five per cent, thereon. When redemption is made, the Street Superintendent shall note that fact on the certificate of sale on file in his office, and deposit the amount paid with the City Treasurer, who shall credit the purchaser named in the certificates of sale with the said amount, and pay the same to said purchaser, or his assignee, upon the surrender of the certificate of sale, and upon satisfactory proof of assignment thereof, if any. When the City of Glendale is the purchaser, the Treasurer shall notify the City Clerk of the redemption, and the City Clerk shall thereupon cancel the certificate of sale on file in his office and the President of the Board of Trustees shall thereupon execute and deliver to such redeemer a quit claim deed, releasing the property upon which redemption was made from the effect of such sale and the sum of one dollar shall be charged and collected for such deed for the use and benefit of the City of Glendale.

Section 20. At any time after the expiration of twelve months from the date of sale, the Street Superintendent must execute to the purchaser, or his assignee on his application, if such purchaser or assignee has complied with the provisions of this Section, a deed of the property sold, in which shall be recited substantially the matters contained in the certificate of sale, also any assignment thereof and the fact that no person has redeemed the property. The Street Superintendent shall receive from the applicant for a deed, one dollar for making such deed, unless the City of Glendale is the purchaser, in which case no charge shall be made therefor. The purchaser or his assignee must, at least thirty days before he applies for a deed, serve upon the owner of the property, and upon the occupant of such property, if the same is occupied, a written notice, setting forth a description of the property, that said property has been sold for a delinquent assessment (specifying the work for which the same was made and referring to this Ordinance), the amount for which it was sold, the amount necessary to redeem at the time of giving notice, and the time when such purchaser or assignee will apply to the Street Superintendent for a deed. If the said owner cannot be found, after due diligence, said notice must be posted in a conspicuous place upon said property at least thirty days before the time stated therein at which the application for a deed will be made. The person applying for a deed must file with the Street Superintendent an affidavit or affidavits showing that notice of such application has been given, as herein required, and if the notice was not served on the owner of the property personally that due diligence was used to find said owner; which affidavit or affidavits must be filed by the Street Superintendent in his office. If redemption of the property is made after such affidavits are filed, and more than eleven months from the date of sale, the person making such redemption must pay, in addition to the other amounts required, three dollars for the service of notice and the making of such affidavits, which amounts shall be paid over to the purchaser or his assignee in the same manner as other sums paid for redemption. No deed for any property sold for delinquent assessment shall be made until the purchaser or his assignee has complied with all the provisions of this Section, and filed the proper affidavits with the Street Superintendent.

Section 21. The deed of the Street Superintendent shall be prima facie evidence of the truth of all matters recited therein, and of the regularity of all proceedings prior to the execution thereof, and of title in the grantee.

Section 22. The City Clerk shall certify to the passage of this Ordinance and shall cause the same to be published in the Glendale Sentinel-Progress, a weekly newspaper of general circulation, published and circulated in the City of Glendale, and thereupon and thereafter the same shall be in full force and effect.

Adopted and approved this 20th day of May, 1920.

HARTLEY SHAW,
President of the Board of
Trustees of the City of
Glendale.

Attest:
J. C. SHERER,
City Clerk of the City
of Glendale.

STATE OF CALIFORNIA,)
(SS.

CITY OF GLENDALE,)
I, J. C. Sherer, City Clerk of the
City of Glendale, do hereby certify
that the foregoing Ordinance was
duly adopted by the Board of Trustees
of the City of Glendale, California,
at a regular meeting held on the
20th day of May, 1920, and signed
by the President of the Board of
Trustees and that the same was adopted
by the following vote:

Ayes: Bartlett, Henry, Robinson,
Shaw, Stephenson.

Noes: None.

Absent: None.

J. C. SHERER,
City Clerk of the City
of Glendale.

Wirthmor Waists Are Dependable Cotton Waists

PRICED AT JUST \$2.00



THEY are still the same high-class, splendidly made, perfect fitting, correctly styled waists that they have always been. The sale of these serviceable waists at \$2.00 when everything that goes into their making has advanced so exorbitantly, proves conclusively these two things:

First that through our close co-operation with the manufacturers we CAN give better values.

Second that in accordance with our never-failing policy we DO give better values to our patrons.

Since the Wirthmor Plan does make possible such substantial savings, don't you think it the part of economy to acquire the Wirthmor habit and buy these blouses repeatedly as do many thrifty women the country over?

Wirthmor Waists can be sold at only one good store in every city and that means that they are sold here only

H. S. WEBB & CO.

103 S. BRAND BLVD.

GLENDALE 713

SEVERAL ATTRACTIVE NEW
MODELS ON SALE

The Same
Low Price
the Nation Over

\$2.00

The Same
New Styles
the Nation Over

Do You Look Your Best?

So much depends upon your personal appearance. So many times a shampoo, a becoming coiffure, a facial massage, a steam pack would give you that poise that comes only with the knowledge that you are well-groomed—that you look your best.

Why not patronize a personal improvement shop conducted by a graduate operator of fourteen years' working experience?

Why not try my hot oil treatments combined with the active Hermalite rays and a circulatory massage followed by a medicated tar shampoo?

Why have blackheads and pimples when our Resinol steam pack process will clear your face in thirty minutes?

Why look old when my Henna process will transform your gray locks, and the work is guaranteed?

"Cliff Caray"

Lotions, Creams, Powders and Bleaches exclusively for my patrons, suiting the ingredients to your individual needs.

WALCOTT BEAUTY PARLORS

106-A EAST BROADWAY

GLENDALE 2116-W

Phone for Appointment

This is Your Opportunity

We invite you to start a checking account with us.

The advantages we offer will be a convenience and benefit to you.

A growing bank account has a real and tangible value over and above the amount of money actually deposited.

It creates greater prestige in the community for the depositor.

This time of plenty is your opportunity.

Our service is yours to command. Won't you claim it today?

The First National Bank

Glendale, Cal.



HOME

Wouldn't it make you feel warm around the heart to come to a place like this after the day's work is done and know it was all your own—to sit on the porch or romp on the lawn with the children after the evening meal and not have to worry about the rent—to work awhile in the vegetable and flower gardens or trim the lawn?

THIS IS A PRETTY COLONIAL BUNGALOW

and the interior plans show it to be very conveniently arranged. However, it might not suit your purpose. You can see the plans at our office and if it is not just what you want we will place at your disposal our

Plan Book Service

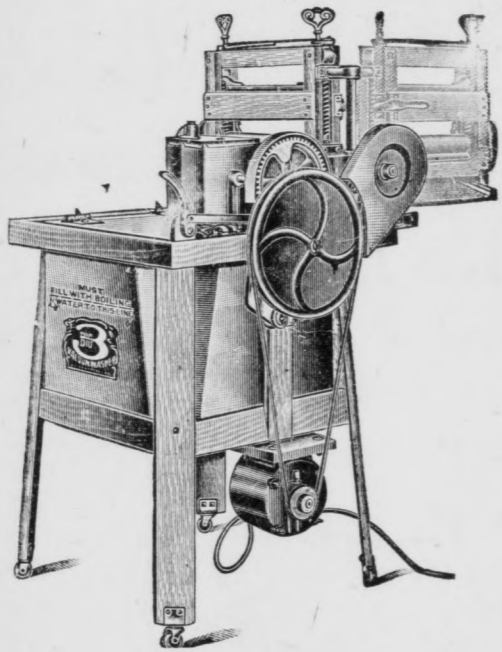
You can choose from hundreds of pretty bungalow homes just the one that will suit you.

We Have Immense Stocks of Building Material of all Kinds—for Immediate Delivery

Fox-Woodsum Lumber Co.

714 E. California Ave.

Glendale 10



The Big 3 Vacuum Washer

The Housewife's Best Friend

SOLD IN GLENDALE AT THE

Big Broadway Hardware Store

THE STORE WHERE YOU CAN BUY PAINTS FOR EVERY PURPOSE. GLENDALE HEADQUARTERS FOR GOOD HARDWARE OF ALL KINDS. DYNAMITE AND BLASTING POWDER

Glendale Hardware Company

601 E. Broadway

Phone Glendale 490

RESOLUTION OF INTENTION NO. 1100

A RESOLUTION OF THE BOARD OF TRUSTEES OF THE CITY OF GLENDALE DECLARING ITS INTENTION TO CLOSE UP, VACATE AND ABANDON FOR STREET AND ALLEY PURPOSES A PORTION OF THAT CERTAIN ALLEY IN TRACT NO. 1680 IN THE CITY OF GLENDALE DESCRIBED HEREIN AND SPECIFYING THE EXTERIOR BOUNDARIES OF THE DISTRICT AFFECTED THEREBY.

THE BOARD OF TRUSTEES OF THE CITY OF GLENDALE DO RESOLVE AS FOLLOWS:

Section 1. That the public interest and convenience require, and it is the intention of the Board of Trustees of the City of Glendale to close up, vacate, and abandon for street and alley purposes, all that certain portion of that fifteen (15) foot alley in Tract No. 1680, as per map recorded in Book 21, Page 66 of Maps, Records of Los Angeles County, California, more particularly described as follows:

Beginning at the intersection of the easterly line of Sycamore Canon Road and the southerly line of Lot 1, Tract No. 1680, as per map recorded in Book 21, Page 66 of Maps, Records of Los Angeles County, California; thence easterly along the southerly lines of Lots 1, 2, 3, 4, and 5, of said Tract No. 1680 to the southeast corner of said Lot 5; thence southeasterly across an alley to the northeast corner of Lot 28 of said Tract No. 1680; thence westerly along the northerly line of said Lot 28 to the intersection of the northerly line of said Lot 28 and the easterly line of Sycamore Canon Road; thence northerly along the easterly line of Sycamore Canon Road to the point of beginning.

Section 2. The exterior boundaries of the district of land to be affected by said work or improvement, and to be assessed to pay the damages, costs and expenses, thereof are hereby specified and declared to be as follows, to-wit:

Beginning at the intersection of the easterly line of Sycamore Canon Road and the southerly line of Wilson Avenue; thence easterly along the southerly line of Wilson Avenue to the northeast corner of Lot 5, Tract 1680, as per map recorded in Book 21, Page 66 of Maps, Records of Los Angeles County, California; thence southerly along the easterly line of Lot 5 of said Tract 1680 to the southeast corner of said Lot 5; thence southeasterly across an alley to the northeast corner of Lot 28, of said Tract 1680; thence southerly along the easterly line of said Lot 28 to the southeast corner of said Lot 28; thence westerly along the southerly line of said Lot 28 to the intersection of the southerly line of said Lot 28 and the easterly line of Sycamore Canon Road; thence northerly along the easterly line of Sycamore Canon Road to point of beginning.

Section 3. That the Street Superintendent of the City of Glendale is hereby directed to cause notice of the passage of this resolution to be posted at the places and in the manner required by law, and also to cause a notice similar in substance to be published as required by law in the Glendale Evening News, a daily newspaper of general circulation published and circulated in said City of Glendale and hereby designated as the newspaper in which said notice shall be published.

Section 4. The City Clerk shall certify to the passage of this resolution and cause the same to be published in the Glendale Evening News in the manner required by law.

Adopted this 27th day of May, 1920.

HARTLEY SHAW,
President of the Board of Trustees of the City of Glendale.

Attest:
J. C. SHERER,
City Clerk of the City of Glendale.

STATE OF CALIFORNIA)
COUNTY OF LOS ANGELES (SS.
CITY OF GLENDALE)

I, J. C. Sherer, City Clerk of the City of Glendale, do hereby certify that the foregoing Resolution was duly adopted by the Board of Trustees of the City of Glendale, State of California, and signed by the president of said Board at a regular meeting thereof held May 27, 1920, by the following vote, to-wit:

Ayes: Bartlett, Henry, Robinson, Shaw, Stephenson.

Noes: None.

Absent: None.

J. C. SHERER
City Clerk of the City of Glendale.

EXPORT TRADE DISTRIBUTED

Freight embargoes from which all parts of the country have suffered, directly or indirectly, during the last few years, as a result of dock workers' strikes and other conditions that stopped work in the harbor of New York are illustrations of the saying that it is unwise to carry all the eggs in one basket. While New York may mourn, therefore, the rest of the nation is more likely to approve the diversion of export trade to Philadelphia, Baltimore and other Eastern ports. Shipping men estimate that New York has lost 80 per cent of this business.

If other ports were remote, and shipment of goods to them from interior points involved an increase in freight charges, there would be reason to deplore the change. But it so happens that there are many good harbors all along the Atlantic coast. Greater use of them might tend to increase freight facilities and to decrease charges.

Alcohol has been extracted from coal gas by an English scientist with an average yield of 1.6 gallons of alcohol to each ton of coal.

No blockhead can be of presidential timber.

NOTICE OF HEARING OF PETITION FOR PROBATE OF WILL No. 47118

In the Superior Court of the State of California in and for the County of Los Angeles.

In the matter of the estate of Charles Franklin Morton, Deceased. Notice is hereby given that the petition of Florence Isabel Morton, for the probate of will of Charles Franklin Morton, also known as Charles F. Morton, deceased, and for the issuance of Letters Testamentary, thereon to Florence Isabel Morton, will be heard at 10 o'clock a. m. on the 8th day of June, 1920 at the Court Room of Department 2 of the Superior Court of the State of California, in and for the County of Los Angeles. Dated May 17, 1920.

L. E. LAMPTON,
Clerk.
By H. H. Doyle, Deputy.
JAMES F. McBRIDE,
Attorney for Petitioner.

An automatic timing attachment features a new electric toaster, turning off the current at the right instant.

Do You Believe In Signs?

The amount of business we are doing indicates the public is quite well pleased with our business tactics. If you have the proper respect for your money and your household goods you'll call us up when you want to move.

THERE ARE SOME SIGNS THAT EVERYONE SHOULD BELIEVE IN

NO TRESPASSING



Robinson Bros' Transfer and Fireproof Storage Co.

304-306 S. Brand Blvd. Phones: Sunset, 428; Night, 1178-J

Make Your Ironing Day An Ironing Hour



There is not the slightest need for you to stand for a half or a full day, pushing a heavy iron and tiring yourself out when you can do the same work much better, with ease, in an hour's time on a

SIMPLEX IRONER

"THE BEST IRONER"

Moreover, with a SIMPLEX you can save money on the cost of heating your irons.

You surely want to learn about this labor and time-saving household help. Come in to our store and let us show and explain it to you.

Ironing the SIMPLEX way is pleasure. It means a saving of health, time, money and linens. The cost of an average family ironing is only 2 to 4c.

We will also gladly show you our line of electric washing machines, vacuum cleaners and other aids to successful household efficiency.

J. A. NEWTON ELECTRIC CO.

629-31-33 East Broadway

Glendale 240-J

BROADWAY BAKERY



PRODUCTS are nourishing as well as appetizing. The proper blending of certain food products is necessary in baking in order to turn out a wholesome loaf of bread, cake or pastry. : : : :

We give as much attention to this as we do to the use of only pure and good ingredients

You will find such a variety of Rolls, Breads, Pies and Cakes here that you will have no trouble in filling all your bakery needs

The Broadway Bakery

116 W. Broadway

Glendale 701

BABY CHICK SEASON

Are you equipped to take good care of your Baby Chicks? We have a well assorted stock of Feeders and Drinking Fountains. Also Pratt's, Coulson's, Globe A-1 and Besgrade Chick Feeds.

LET US FILL YOUR ORDER

Glendale Feed and Fuel Co.

PHONE GLEN. 258-J.

106 S. GLENDALE AVE.

CONSULTING

ESTIMATING

EDDY & DALEY ENGINEERS and CONTRACTORS

710 E. Broadway
Glendale

Phone Glendale 469

Grading and Concrete Work of All Kinds

Surveying—Subdividing Hydraulic Engineering

BIRTHDAY DINNER

The home of Mr. and Mrs. M. F. Matthiesen of 218 West Windsor Road was the scene of a merry dinner party Wednesday evening, the occasion being the birthday of Miss Edna Phillips, sister of Mrs. Matthiesen. The house and table were profusely decorated with bowls of pink sweet peas and ferns, and bou-tonnieres were tiny Cecil Brunner rosebuds.

After a two-course dinner had been enjoyed Miss Phillips was summoned to the door where she received a bundle which, on being opened, was found to contain beautiful

birthday gifts. A musical and social evening was enjoyed, the guests departing at a late hour wishing Miss Phillips many happy returns. Those present besides the guest of honor were: Mr. and Mrs. H. F. Clewett, and daughter, Miriam, and sons, Robert and Stanley, Mrs. A. M. Phillips, Clyde Phillips, Allen Baker, Dorothy Matthiesen, Howard Matthiesen and the host and hostess.

An Englishman has built a machine that registers motions made by muscular efforts for identifying criminals by their walk.

Advertise in the Evening News.

MARQUARDTS SELL HOME

Mr. and Mrs. John Marquardt, well-known violinist and harpiste, respectively, who for six months resided at 423 West Broadway, have sold their home to Mr. and Mrs. Edward Orr Stafford, of Marquette, Michigan.

Mr. Stafford is a prominent druggist of that city and he is looking forward to the time when he can perpetually bask in the California sunshine. As business is pressing, the Staffords returned to Marquette to make preparations to be ready to move to Glendale by Christmas, ly.

The Marquardts are moving to Sierra Madre, where they lived last winter enjoying the high altitude. They have changed their residence nine times during five years, but have twice lived in Glendale, when they expect to stay permanent-

TRUSTEES' MEETING

(Continued from Page 1)
services of a band of 16 pieces on Memorial Day.

A communication was read from the Committee on Arrangements for patriotic parade and ceremonies to be held on Monday, May 31st, next, inviting the members of the Board of Trustees to participate in the parade and other parts of the program.

On motion of Trustee Stephenson, the invitation was accepted.

A communication was read from J. R. Bentley, asking for information as to the cesspool proposition in Verdugo Canyon. This was referred to the Committee of the Whole.

A communication from J. E. Walker asking permission to remove certain shade trees was read and referred to City Manager to report upon at the next regular meeting.

A communication was read from City Attorney Evans, inclosing a check payable to the city for the sum of \$31.73 representing the amount of the judgment for cost and interest awarded the City of Glendale in the case of Charles G. Gardner, Trustee, against the City of Glendale, et al. Communication filed.

A communication was read from F. McG. Kelley, on behalf of the Glendale Plant & Floral Company, asking permission to remove a building now fronting on Brand boulevard to the rear end of Lot 16 on Maryland avenue. This was referred to the City Manager to report upon at the next regular meeting.

An application was read from H. A. Wilson for license certificate to operate motor bus lines over certain streets in the City of Glendale. On motion the application was referred to the City Attorney and the Committee of the Whole.

D. S. Phillips, Auditor of the Public Service Department, presented his resignation to take place July 1, 1920. Accompanying the same was a letter from the City Manager, as follows:

May 27, 1920.

To the Honorable Board of Trustees, City of Glendale, California.
Mrs. Bartlett and Gentlemen:

We present herewith the resignation of D. S. Phillips as Auditor of the Public Service Department. Mr. Phillips has been in the employ of the City of Glendale in the Public Service Department since February 8, 1915, a period of five years, three months and nineteen days to date. During this time he has applied himself with diligence to the affairs of the Public Service Department and has shown ability in organizing and conducting the Commercial Division thereof, as well as in handling the General Accounts and taking care of considerable of the General Business of the Department.

We want to hereby express to Mr. Phillips through your Honorable Body, our highest appreciation of his cheerful co-operation in all the matters which he has had to do with during this period which have come under our supervision.

Respectfully submitted,

(Signed) T. W. WATSON,
City Manager.

On motion of Trustee Henry, the resignation was accepted.

Demands were presented and referred to the Finance Committee and later reported back approved. On motion of Trustee Stephenson, warrants were ordered to be issued in payment of the same.

The City Manager presented a report on the cost of serving electric energy for industrial power to the Crystal Ice Company. The report entered very fully into the matter, and was referred to the Committee of the Whole. Mrs. Coker, representing the Crystal Ice Co., addressed the Board in reference to the matter.

A letter was read from J. Herbert Smith, calling attention to a fire hydrant in front of his place of business on Brand boulevard and complaining that the same is a source of annoyance to his patrons, and expressing the opinion that as there are two other hydrants in the same block, the one complained of is unnecessary.

The Engineer of the Public Service Department recommended that the type M. D. A. M., Wallace and Tiernan chlorine control apparatus be purchased. On motion of Trustee Henry, the recommendation was approved and it was so ordered.

The Engineer of the Public Service Department presented plans and specifications for the laying of wa-

SHAVER'S

FOR SATURDAY

NEW POTATOES, 4 lb	25c
TELEPHONE PEAS, lb	10c
KENTUCKY WONDER BEANS, lb	10c
GREEN ASPARAGUS, lb	15c
FANCY STRAWBERRIES, BASKET	20c
FRESH TOMATOES, lb	20c
FRESH CUCUMBERS, EACH	10c
SOLID CABBAGE, lb	1 1/2c
DEVILED TUNA, FOR SANDWICHES, 2 LARGE CANS	25c

We Close All Day Monday

Shaver Grocery Co.

(INCORPORATED)
H. G. MAC BAIN, President
BROADWAY AND GLENDALE AVE. PHONE SUNSET 136

We Deliver all Orders of 50 Cents or Over

ITS UP TO YOU!

You have noticed that some people are always scrambling around the foot of the ladder but never get off the ground, while others just naturally can't help going to the top.

WHY?

A scientific answer may be obtained at

The BANK of GLENDALE
at Glendale Ave. and Broadway
or at 104 North Brand Boulevard

GET A COPY AND "SHAKE UP"

Quality Grocery

CORNER BRAND BLVD. AND WILSON AVE.

For Saturday

Our Usual Good Service

Remember our store will be closed all day
MONDAY, DECORATION DAY

We Ask Our Friends

to get their orders in as early Saturday morning as possible. This will prevent any delay in serving them

Quality Grocery

Phone Glendale 59

White Star Markets

108 East Broadway
Basket Grocery
Phone 761-J

1502 San Fernando Road
Over Grocery
Glendale 604

Our Specials on Saturday

for your Sunday dinner meats. Also notice that the market and grocery will be closed ALL DAY MONDAY, reserved as a legal holiday, so make your Saturday shopping a two-day one. Remember the place for Quality Meats, and the rest is left to your good judgment. Come in early and take your choice

- | | |
|-----------------------|-------------|
| Lamb Legs, the best | 33c |
| Lamb Shoulders, Whole | 26c |
| Pork Shoulder Roasts | 25c |
| Fancy Boiling Beef | 12 1/2c |
| Choice Pot Roasts | 14c-16c-18c |
| 2 Pounds Compound | 45c |

Remember the Numbers—Quality Our Motto

C. CASWELL, Proprietor

ter pipe in the extension of the water service to the Grand Avenue Section. On motion of Trustee Stephenson, action was deferred for one week.

The City Attorney reported that he had examined the ordinance prepared for the opening of Patterson avenue and finds it correct, and the same was presented by Trustee Henry and laid over for one week.

An ordinance of intention to open Commercial street was also approved by the City Attorney, and the same was presented by Trustee Henry and laid over until the next regular meeting.

A resolution declaring intention to abandon an alley between Broadway and Wilson avenue, running through the recently acquired school property was on motion of Trustee Bartlett adopted as Resolution No. 1100.

On motion of Trustee Henry, it was ordered that bids received for the improvement of Sycamore Canyon Road be rejected.

An ordinance prepared by City Manager, amending Ordinance No. 377 referring to garages, automobile filling stations, etc., was referred to the Committee of the Whole.

On recommendation of the City Attorney, it was ordered on motion of Trustee Henry, that the city purchase a copy of the General Laws of 1915 with 1919 amendments, for use in the Council Chamber.

On motion of Trustee Henry, an ordinance presented at the previous meeting was adopted as Ordinance No. 381, "An ordinance of the City of Glendale amending Sections 6, 12 and 13 of Ordinance No. 355."

On motion of Trustee Stephenson, an ordinance presented at the previous meeting of the Board was adopted as ordinance No. 382, "An ordinance of the City of Glendale fixing the salaries of the officials of said city, authorizing the employment of certain employes of said city, and fixing the compensation or rates of pay therefor, and repealing Ordinance No. 356 and all ordinances amendatory thereto."

On motion of Trustee Stephenson, it was ordered that a public hearing be held at the next regular meeting of the Board at eight o'clock p. m., on the question of calling an election to elect a Board of Freeholders for the purpose of framing a charter for the City; also that Clerk publish a notice of said hearing in the local papers.

A new electric melting pot for metals is self regulating, cutting off the current when a certain degree is reached.



LISTEN!

**The High Cost of Living Hit Hard
20 PCT. BREAK IN PRICE OF MEATS!**

We Will Be Closed All Day Monday

SPECIAL

- | | | | |
|-----------------------------------|-----|-----------------|-------------|
| Legs Spring Lamb | 33c | Boiling Beeg | 12 1/2c-15c |
| Shoulder Spring Lamb | 28c | Chuck Pot Roast | 15c-18c |
| Pig Pork Shoulder Roast | 28c | Veal Roast | 25c |
| Spare Ribs | 25c | Veal Stew | 20c |
| Bacon Strips (Limit One Piece) lb | 30c | | |

We Carry the Most Complete Line of Cold Meats in Glendale
Frying Chickens or Rabbits, Fresh Killed, Special lb.....45c

HURD & BERRY, Props.

NOTICE OF HEARING OF PETITION FOR PROBATE OF WILL

No. 47250
In the Superior Court of the State of California in and for the County of Los Angeles.

In the matter of the estate of Elizabeth I. Weaver, Deceased.
Notice is hereby given that the petition of M. L. Weaver for the Probate of the Will of Elizabeth I. Weaver, Deceased, and for the issuance of Letters Testamentary thereon to M. L. Weaver, will be heard at 2 o'clock p. m., on the 21st day of June, 1920, at the Court Room of Department 2 of the Superior Court of the State of California, in and for the County of Los Angeles.
Dated May 27th, 1920.

L. E. LAMPTON, Clerk.
By H. H. Doyle, Deputy.
JAMES F. McBRYDE,
Attorney for Petitioner.
103-A North Brand,
Glendale, Calif.

A street sprinkler that distributes water to form advertisements on smooth pavements has been invented by a Japanese.

To protect occupants of baby carriages from insects is the aim of a three-piece screen that can be rolled when not in use.

Just Arrived!!
2 CARLOADS
of
CLARK JEWEL and ECLIPSE GAS RANGES

ON DISPLAY
at the
Southern California Gas Company
112 WEST BROADWAY
GLENDALE 714