

The New Zealand Thesis Project

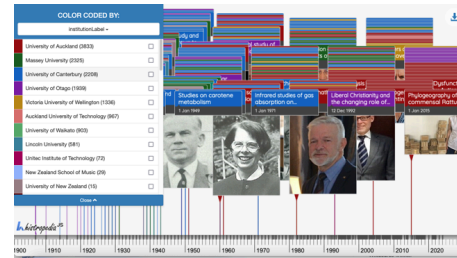
Uploading the bibliographic metadata from public thesis repositories to Wikidata: over 66,000 PhD and Masters theses from 13 different institutions.

This is the first-ever attempt to model an entire country's academic thesis repository in Wikidata.

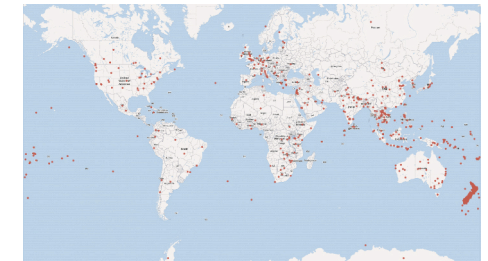
- Over 20% of the theses are now connected to an author item.
- Over 85% are connected to at least one main subject
- Accessibility gains: numerous out-of-copyright theses were detected and moved into open access

More information
Tamsin Braisher,
User:DrThneed
braishert@yahoo.co.nz

Project page
<https://bit.ly/NZthesis>



Who's doing the studying? Interactive Histropedia timelines display thesis authors by institution, or by year of birth.

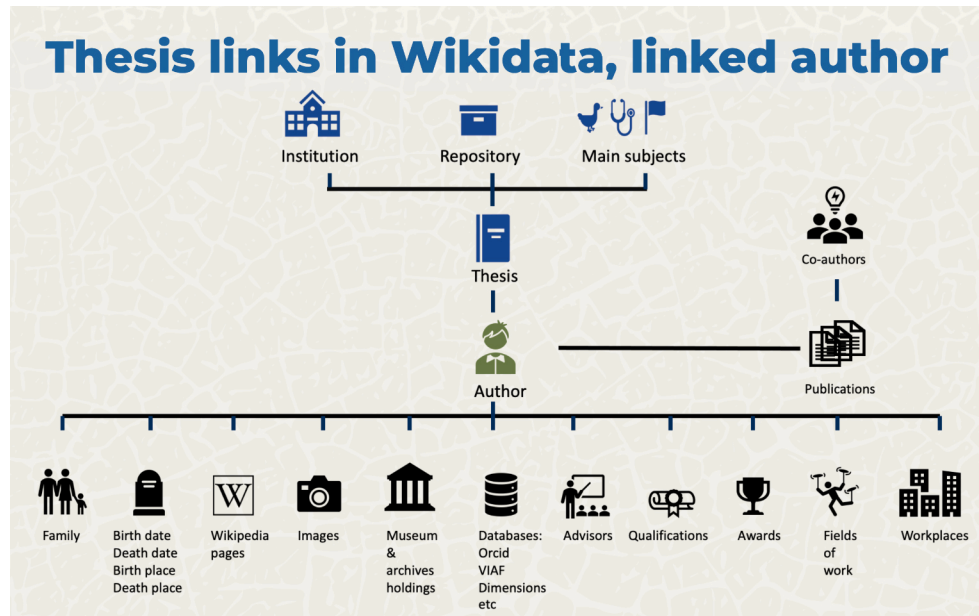
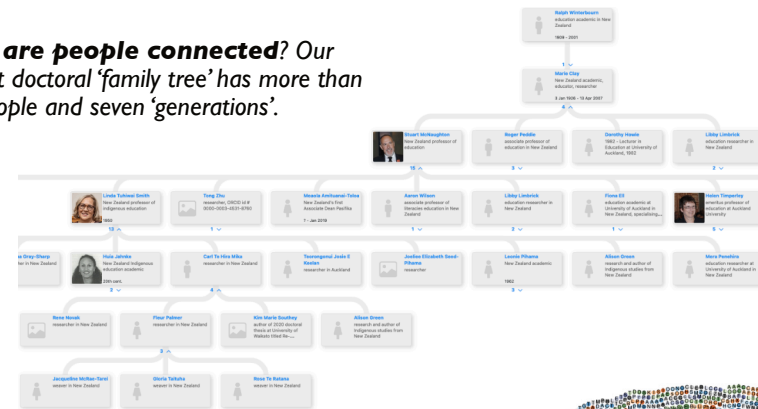


What places do we study? We have theses on the North Pole, the South Pole, and a lot of places in between!

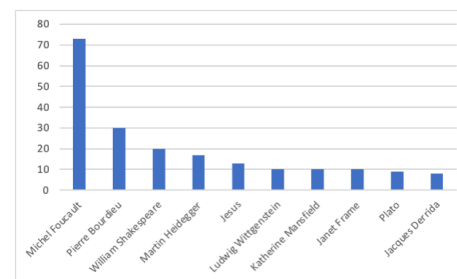
- Thousands of theses now cited on Wikipedia pages

The thesis collection is a rich source of subject data: Which musicians do we study most? Which places do we study?

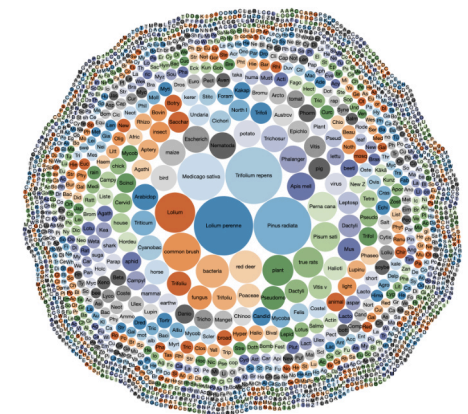
How are people connected? Our biggest doctoral 'family tree' has more than 65 people and seven 'generations'.



The **Wikidata thesis model** developed for this project connects Wikidata items for the thesis, the institutions, the author and the advisors, as well as main subjects, and biographical data.



Who do we study? French philosopher Michel Foucault is the subject of more than seven times as many theses as our top studied New Zealanders, writers Katherine Mansfield and Janet Frame.



What taxa do we study? We mostly study economically important groups like ryegrass, pine trees, and animal pests like possums, rats and deer.