

## **Historic, Archive Document**

Do not assume content reflects current scientific knowledge, policies, or practices.



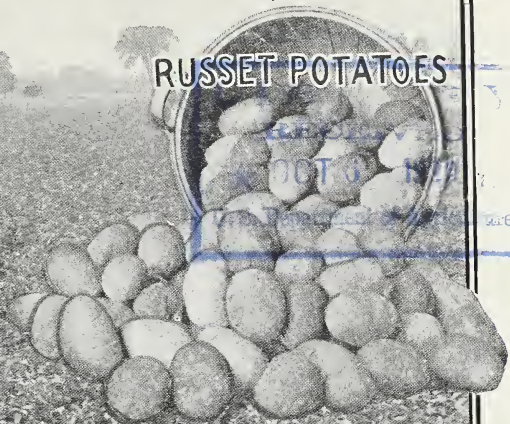
273

# CATALOG for 1918

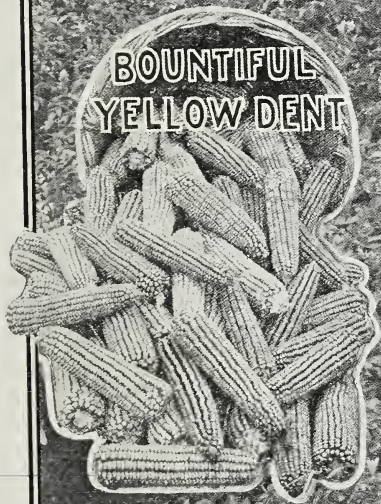
## GLICKS

SEED PLANT  
AND POULTRY  
FARMS

RUSSET POTATOES



BOUNTIFUL  
YELLOW DENT



FIELD OF  
RUSSET POTATOES

SMOKETOWN  
LANCASTER CO.  
PENNA U.S.A.

SWEDISH  
SELECT OATS



## Information for You

The Glick Seed Farm Business is divided into different branches. When any information is desired, or in sending in your orders, always mark on the lower left hand corner of the envelope for which department, viz: Seed, Plant, or Poultry Department.

---

## Order Early

Kindly send in your orders as soon as convenient after receiving this catalog. We aim to fill all orders the same day, but during the rush season in March and April this is not always possible. It is better to have your seed on hand a few days than to wait on them when you are ready to plant them. **We pay the freight on all orders amounting to three bushels or more anywhere East of the Mississippi River or North of Tennessee and North Carolina.** Bags are charged at cost. Prices quoted on Seed Potatoes are F. O. B. our station.

---

## Prices

All quotations are subject to market changes without notice and unsold on receipt of order. If you are not ready to buy when this catalog reaches you, write us for latest quotations. Latest Price List is sent with each catalog.

---

## Terms of Payment

**All orders must be accompanied by cash.** (No goods sent C. O. D.) You are protected by our guarantee. Everything we send out must be satisfactory to you, or it can be returned to us, and the purchase money will be refunded. Registered letter, P.O.M.O., Checks or Drafts are preferred. Postage stamps often reach us in a worthless condition and are very undesirable. Any good substitute for money will do, **but please don't send Stamps.**

---

Great care is exercised to have everything pure and true to name, and if found otherwise, we will refund the money paid for it. Other than this we cannot guarantee, and will not be held liable for the crop results, etc.

---

---

# GLICK'S SEED FARMS

SMOKETOWN, LANCASTER COUNTY, PENNSYLVANIA

# INTRODUCTION



IN PRESENTING this catalog we take the opportunity to thank our many customers for the kind words and liberal patronage tendered us during the past year, and trust our future dealings will be equally satisfactory and profitable to all.

¶ We feel great pride in the personal relations we hold with our customers, even though we have never met, and hope we will be able to conduct our increasing business in such a manner that any one who buys from us will remain a satisfied customer and friend.

¶ Owing to the great demand for Seeds, Plants, and Poultry, we have been compelled to greatly increase the capacity of every branch of Business.

*Our Aim is to Produce the Best that Grows  
and to keep the Prices as Low as Possible.*

¶ The Season's Greetings are extended to you, together with our Best Wishes for your Health and Prosperity.

Yours respectfully,

P. L. ROHRER, Manager.

---

---

## LOCATION

¶ Our Farms are situated in Lancaster County, one-fourth mile Southwest of Witmer Station, and one mile West of Bird-in-Hand, on the Main Line of the Pennsylvania Railroad, running from Philadelphia to Pittsburgh.

¶ Visitors are welcome every day (except Sundays).

# MAINE GROWN SEED POTATOES

## Grown Especially for Seed by Seed Growers

We have made a specialty of supplying our trade with Maine Grown Seed Potatoes. These are grown especially for Seed by the most reliable growers in Aroostook County, Maine, and shipped direct to us in car load lots. All Seed carefully selected, and being pure and true to name, produces a much larger yield, and potatoes of a finer quality, than the home grown or stocks usually sold on the open market for Seed purposes. **All Seed guaranteed to please purchaser and are sold on the Money Back Plan.** Potatoes are shipped in heavy burlap bags for which we make no charge. We begin shipping in the Spring as soon as the weather will permit without freezing. Unless otherwise agreed purchaser pays freight or express charges on all orders for Seed Potatoes. The Potato crop in Maine has been 50% less than last year. The demand will exceed the supply, and we would advise you to place your order now. **Be safe—plant guaranteed stock. We offer only reliable varieties that have made good.**



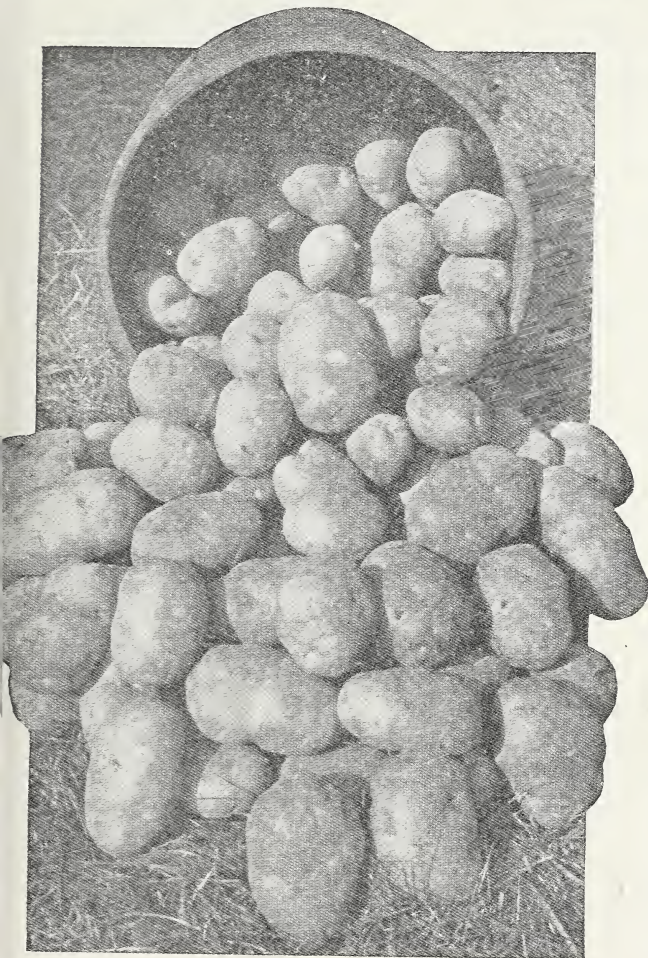
## Irish Cobblers

An extra early, round, white potato. Vines yield heavily and the tubers are of extremely fine quality. This variety is very popular in the early markets, and is being planted more extensively each year. This crop is ready about ten days earlier than the Early Rose. Our stock is pure and true to name, and hard to equal. It is quite probable the demand this season will be larger than usual. We advise ordering early.

For Prices on Farm Seeds See Latest Price List

## Second Crop Irish Cobblers

We are in position this season to furnish Second Crop Irish Cobblers, grown for us in Virginia for Seed only. They are a nice size, pure and true to name, and will plant further than Maine Grown Seed. If in need of any Cobblers for your Spring planting you will find it profitable to order some of these.



Russets

## Russets

This potato is one of the leading Main-Crop varieties, and cannot be excelled either baked or boiled. The flesh is pure white, has a splendid flavor, excellent keeper, and retains all its good qualities late in the Spring. The tubers are large and round, covered with a russet skin. This is a very hardy variety, and is not subject to disease, rot, etc. Can be grown on soil heavily manured without danger of rot. Its great productiveness, fine eating qualities, and resistance to disease, makes it a very desirable and profitable potato, and one especially adapted to your locality.

## Sir Walter Raleigh

The tubers vary from round to oblong in shape. Large size, yields and keeps well. White skin, always smooth, and of good quality. Usually brings top notch price. Our stock is pure and true to name and cannot be surpassed.

## Early Day Break

This variety is without doubt the earliest White Potato in existence. Is round to oval in shape, has pink eyes, and is far more productive than most early varieties.

DEAR SIRS :

Potatoes have arrived O. K. Came March 29th.

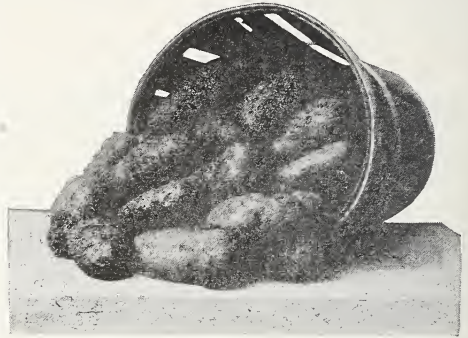
UNIONVILLE CENTRE, OHIO, March 31, 1917.

Yours truly, U. G. WYCOFF.

For Prices on Farm Seeds See Latest Price List

## Washington

One of our biggest yielders and a very profitable variety. It is oblong, slightly flattened in shape, grows to immense size. The flesh and skin are white, and is a splendid keeper. Many prominent growers have discarded all other varieties and are planting it exclusively. It matures several days earlier than the Green Mountain. A lengthy description is entirely uncalled for, but will state if you desire to grow a **Bumper Crop**, plant Washingtons.



Washington

## Improved Green Mountain

This variety has proved to be one of the surest croppers. A very handsome white skinned potato, slightly netted. Good keeper and excellent shipper, and the quality being one of the best, makes it one of the foremost varieties on the large City markets. A trial will convince you.

## Early Six Weeks

We consider this the best Early Red Skinned Variety. Sometimes sold as the Red Bliss or Red Triumph. It grows to a good size, has square ends and the flesh is white and firm. Planted extensively for market.

## Early Rose

The stock we offer is genuine, of the Old Standard Early Rose Potato, pure and true to name. While this is one of the oldest varieties it still retains its popularity. If you give these a trial you will be well repaid.

## Carman No. 3

Extra large tubers. Pure white, oblong and slightly flat. A robust grower and a drought resister. Vines are extra good growers and yield an immense quantity of uniform large sized tubers. Widely known as one of the best main crop varieties.

GLICK'S SEED FARMS

GENTLEMEN:—Potatoes arrived to-day in good shape, and everything is all right.

Yours truly, ANDREW HALL.

DEAR SIR:

Received my order to-day in good condition.

SLATINGTON, PA., April 10, 1927.  
Yours truly, OLIVER BACHMAN.

DEAR SIR:

I received the order shipped to Uniontown O. K., and it is very satisfactory.

UNIONTOWN, PA., February 26, 1917.  
Yours truly, A. L. FRETTS.



## Early Ohio

A sort that is well known by market-gardeners who are after first-early potatoes for home trade. The tubers are round, with pink skin, and excellent quality. It is rather difficult to obtain Pure Early Ohio Seed as other pink skinned varieties are offered as being Early Ohios. The Seed we offer is pure and true to name, and like all other varieties it is sold by us under a Money Back Guarantee. It grows quickly, cooks mealy, and keeps well for such an extremely early variety.

## Vermont Gold Coin

This is a very popular main crop variety. We have found it to be a very desirable and profitable potato. Vines are strong with exceptionally deep foliage, making a very heavy growth and seldom known to blight. The tubers are large, white, and lie close together on the hill. The flesh is fine grained and excellent quality. Shippers prefer this variety to all others and frequently pay a premium for it. You will not go wrong in ordering from us. It will increase your profits.

## Seed Potato Eyes by Parcel Post

Any one wishing a few early potatoes to plant in the garden will find this a splendid and cheap way to get them. Many of our customers are taking advantage of this offer. You may select any variety you wish. We will not send more than one variety in the same bag. The Seed is put up well and will carry safely to any part of the United States. Seed is ready to plant and we suggest our customers mention the date of delivery when ordering.

Each bag contains 100 eyes. Will plant 100 ft. row.

Single bag, 75c; two bags, \$1.40.

## Why Not Order Your Seed Potatoes Now?

It may save you time and patience at planting time. Your order will be booked for future shipment at present price if \$1.00 cash per barrel sack is sent with order. Balance can be paid when you want the seed shipped. We would advise you to order your Seed Potatoes early, as the crop has been very short throughout the country.

GLICK'S SEED FARMS

DEAR SIR:—Wish to inform you that I received the Seed Potatoes on the 13th, and in good condition. Thanking you for the care taken in packing them.

BUCHTEL, OHIO, April 16, 1917.

Yours truly, HENRY STEGE.

MR. GLICK:

I have received the seed I ordered of you. Am very much pleased

SWAIN, N. Y., March 7, 1917.

with the seed. It is fine.  
Yours truly, E. D. ISAMAN.

GLICK'S SEED FARMS

DEAR SIR:—Your seed arrived yesterday in good condition. Thanking you for your promptness in shipping, I am,

MANASSAS, VA., March 29, 1917.

Yours truly, J. B. JOHNSON.

For Prices on Farm Seeds See Latest Price List

# ALFALFA

**The Most Profitable and Valuable Hay Crop for the Dairy Farmer**



Each year shows a large increase in the acreage of Alfalfa, both in the Western and Eastern States. An acre of good Alfalfa produces twice as much digestible nutrients as an acre of good Clover. The digestible protein being three times as great.

Our climate is not unfavorable to Alfalfa. This is proved by the success that follows seeding in a large number of localities in our Eastern States.

Alfalfa grows well on a variety of soils, provided the drainage is good. The most favorable soil may be a fertile sand loam with a porous subsoil, but the greater part of the Alfalfa now successfully grown in our Eastern States is thriving on heavier soils.

There must be drainage, fertility and lime, and to insure a stand of plants there should be a firm, moist seed bed, and freedom from weed seeds. Good seed is essential. Alfalfa is seldom injured by heavy seeding and often it would be better if more seed had been used. No less than twenty pounds of Seed should be sown. Thick sowing is an advantage because the Alfalfa stands are heavier and the hay is better quality, and weeds are subdued.

MR. P. L. ROHRER

DEAR SIR:—I received the grass seed on the 23rd, and found it all O. K. Am very well pleased with it.

HORSE SHOE RUN, W. VA., March 28, 1917.

YOURS truly, AMOS REMBOLD.

**For Prices on Farm Seeds See Latest Price List**

Alfalfa may be sown at any time during the growing season. We recommend either early seeding or August sowing. If a nurse crop is desired with Spring seeding we recommend Beardless Spring Barley, using not more than one bushel per acre. The purpose of the nurse crop is to prevent the growth of weeds until the Alfalfa plants get started. If sown in the Fall no nurse crop will be necessary, but land should be free and clean from weeds.

We recommend the Montana grown, non-irrigated seed. We have found it more dependable than Western grown seed, and for this reason we sell only this one grade, highest in purity and germination. Samples and prices will be mailed to all who are interested in this valuable crop.

Where Alfalfa has not been grown before, seed must be inoculated with Farmogerm, to place the proper bacteria in the soil.



Melilotus or Sweet Clover—White Blossom

## Melilotus or Sweet Clover (White Blossom)

Sweet Clover resembles Alfalfa both in appearance and habit of growth, when young. Grows larger than Alfalfa. When properly handled Sweet Clover is a valuable addition to the farm crops of many sections. It is efficient as a soil renovator by reason of the large amount of nitrogen it is able to take from the air as well as the Humus added to the soil when it is turned under, or from the decay of the roots when it is harvested.

Sweet Clover will grow on soils too low in humus content for the favorable growth of most other Legumes. Analyses and Feeding experiments indicate that it is nearly equal to Alfalfa in feeding value. Can be sown Spring or Fall. It should be covered about one-half inch. Sow about 20 pounds of hulled seed per acre. There

is nothing better to bring your worn out land into farmable condition. To get full value out of your Sweet Clover Seed inoculate it with Farmogerm. See Price List.

DEAR SIR:

Received Clover Seed to-day, and is all O. K.

IRWIN, PA., April 2, 1917.

Yours truly, C. P. ASHBAUGH.

For Prices on Farm Seeds See Latest Price List

## GRASS AND CLOVER SEEDS

The prices quoted on enclosed price list are for the best grades obtainable. Seeds that are sure to grow under favorable conditions and will give a satisfactory crop. We do not handle second grade, low priced Seed, that usually disappoints us. You not only lose the season, time, labor, etc., but if the crop sells you also lose the profit. It pays to plant nothing but the very best grades.

**Why Not Buy Selected Seed?** Every bag of Seed we send out is sold subject to **Government Test**. If not found satisfactory or as we represent it, you can return it at our expense, and your money will be cheerfully refunded.



**Domestic Brand Clover Medium**

### Domestic Brand Clover Medium

Red Clover is one of the Chief Corner Stones of Agriculture in the North, Central and Eastern States. Medium Clover, also known as June Clover, is the most popular of all grasses. We recommend our Domestic Brand Clover. **It is high in purity and germination.** The difference in the cost of this Seed and the average grade of Seed should not be considered by a careful Farmer. We have been selling large quantities to Farmers' Clubs and Grangers and have received many enthusiastic Reports from some of the best growers in the Country.

### Pure and Vigorous Seeds are of Great Importance

Our Clover Seed has been giving very gratifying results, and is especially adapted to climate conditions of practically all the States East of the Mississippi River. All Seeds are carefully tested and are sold by the test. Red Clover is

often sown with Alsike or Timothy. We recommend sowing three parts Red Clover and one part Alsike. If sown alone sow about four to five quarts per acre. Inoculate Red Clover with Farmogerm and you will be well repaid.

## Domestic Brand Mammoth Clover

Mammoth or Pea Vine Clover is very much like the Medium, except that it grows taller and coarser in foliage. Under similar conditions the Mammoth develops a stronger character of top and root development than does the Medium. In consequence Mammoth Clover is a greater soil renovator and will grow better than the Medium on these soils which are most in need of renovation. Mammoth Clover is usually ready to be harvested in July. A few weeks later than the Medium. There is no difference in the appearance of the Seed, but we have been very successful in getting Seed true to name and believe our stock this season can be relied upon. **Supply of True Mammoth is Limited.** Use Farmogerm to insure a Bumper Crop.

## Choice Red Clover

Our Choice grade is found superior to the best grades offered by the average dealers. It is not a second grade. It represents the very highest degree of purity as well as germination. It will compare favorably with any competing brand on the market both in purity and growth, and is second only to our Domestic Brand Clover.

## Alsike Clover

Alsike ranks nearly as valuable as the Medium for ordinary soils, and in special conditions is much better. It is especially adapted to wet soils, and also to soils that are too low in Humus to grow Red Clover to advantage. The plants are smaller than the Medium Clover, and the quality of the hay is better. It is much more closely eaten by stock and much less waste. It is hardier than the Medium or Mammoth, but is more apt to lodge than either. For this reason it is usually best to sow it in a mixture with Red Clover to prevent lodging. The Seed is much smaller and is more liable to contain noxious weeds. We recommend sowing the very best grade of Alsike. Our fancy Seed is 99% pure. Six pounds of Red Clover and two pounds of Alsike will make a very desirable mixture. If sown alone sow four to five quarts per acre. Produces best when inoculated with Farmogerm.

MR. I. N. GLICK

DEAR SIR:—The 4½ bu. Clover Seed was as per my order No. 3548 has arrived in good condition. Must say the seed is as good as any I have ever seen, and lots better than the usual grade.

Yours truly, W. L. GOSWEILER.

ABERDEEN, MD., April 4, 1917.

MR. I. N. GLICK

DEAR SIR:—My Clover Seed arrived all O. K. and oblige.

PORT TREVERTON, PA. April 20, 1917.

GEORGE HALL,

DEAR SIR:

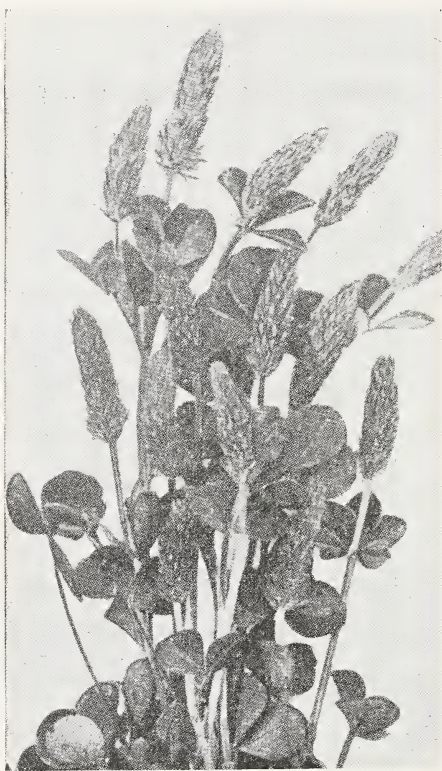
We received the Clover Seed and Timothy all right, and are very well satisfied.

Yours truly, JAS. W. WEBER.

GLENSHAW, PA., May 1, 1917.

## Crimson Clover

Crimson Clover is especially valuable as a cover crop and for green manure. Its special advantage lies in that its Autumn, Winter and Spring growth is



Crimson Clover

sufficient so that it may be turned under the following Spring in time for another crop. Every Farmer should sow it in the corn just before the last cultivation. It should be harrowed in so it will be covered. Crimson Clover may follow Early Potatoes or any other early Spring crop, and is one of the cheapest Legumes for soil improvement. It will thrive on poor lands and will add Fertility. We handle one grade only. Highest quality in purity and germination. Sow 15 pounds of Seed per acre. Inoculate with Farmogerm and your crop will take hold and have a good start even in the poorest soil.

## Red Top or Herd Grass

Red Top is one of the most valuable Grasses for Hay or Pasture. We especially recommend it when a field of grass is to remain over one year. It does well on most any kind of soil, and is especially adapted on low, moist lands. We recommend sowing

the solid seed only. Sow ten pounds of Solid Seed per acre. We sell only the best grade of Solid Seed. Best in quality and germination.

## Timothy

Timothy Seed is largely sown with Red Clover, and makes very good hay. It is also valuable in Pasture Mixtures. It is very hardy and will thrive on any soil. Timothy is usually low in price compared with other Clovers, therefore we recommend sowing best grade only. When sown alone eight quarts per acre are required. If sown with Clover use four quarts per acre. See Price List.

MR. GLICK—DEAR SIR:

Clover and Timothy Seed on order 1669, arrived safe and sound.

Yours truly, G. B. SMITH.

For Prices on Farm Seeds See Latest Price List







# PRICE LIST

—Jan. 9th, 1918—

(PRICES SUBJECT TO CHANGE WITHOUT NOTICE.)

(TERMS: CASH WITH ORDER.)

Choice Red Clover, (Medium or Mammoth) .....	\$ 19.50	per bu.,	60 lbs.
Domestic Brand Red Clover, (Medium or Mammoth) .....	20.00	" "	60 "
Choice Alsike Clover .....	16.75	" "	60 "
Fancy " " .....	17.00	" "	60 "
Fancy Montana Grown Alfalfa Clover .....	14.50	" "	60 "
Fancy Crimson Clover .....	12.00	" "	60 "
Sweet Clover (White Bokhara) .....	18.00	" "	60 "
Small White Clover .....	.60	" lb.	
Fancy Lawn Grass .....	.30	" lb.	
Choice Timothy .....	4.60	" bu.,	45 lbs.
Fancy " " .....	4.75	" "	45 "
Fancy Red Top .....	5.50	" "	32 "
Permanent Pasture Mixture .....	6.00	" "	25 "
Fancy Kentucky Blue Grass .....	3.50	" "	14 "
Fancy Orchard Grass .....	3.75	" "	14 "
Dwarf Essex Rape .....	.16	" lb.	
Sand or Hairy Vetch .....	.20	" "	
Canada Field Peas .....	5.50	" bu.,	60 "
Bountiful Yellow Dent Corn .....	4.00	" "	56 "
Imp. Leaming Corn .....	4.00	" "	56 "
Early Eureka (Ensilage) Corn .....	4.00	" "	56 "
Swedish Select Seed Oats .....	1.25	" "	32 "
Beardless Spring Barley .....	2.50	" "	48 "
Marquise Spring Wheat .....	4.00	" "	60 "

Grain Bags hold 2½ bushels--40 cts., each.

The above prices are FREIGHT PREPAID any-where East of the Mississippi River and North of Tennessee and North Carolina on grass seed orders amounting to 3 bushels or more, Bags extra.

## SEED POTATOES

	Peck.	Bushel.	Sack (165 lb.)
Early Day Break .....	\$ .90	\$ 2.75	\$ 7.00
Early Ohio .....	.90	2.75	7.00
Early Six Weeks .....	.90	2.75	7.00
Early Rose .....	.90	2.75	7.00
Washington .....	.90	2.75	7.00
Irish Cobblers .....	.90	2.75	7.00
Second Crop Irish Cobblers .....	.90	2.75	7.00
Russets .....	.90	2.75	7.00
Imp. Green Mountain .....	.90	2.75	7.00
Vermont Gold Coin .....	.90	2.75	7.00
Sir Walter Raleigh .....	.90	2.75	7.00
Carman No. 3 .....	.90	2.75	7.00

Prices on Seed Potatoes are F. O. B. BIRD-IN-HAND, PA.

**GLADIOLA BULBS - \$0.25 PER DOZ. POSTPAID.**

From .....  
P. O. ....  
R. D. ....  
State .....

**Glick's Seed Farms,**  
**Smoketown,**  
**Lancaster Co., Penna.**

State whether Seed, Plant or Poultry Dep't. Department.

U. S. A.

## Permanent Pasture Mixture



Good pasture land is the foundation of the riches of a farm. One of the most valuable crops of successful farming, stock, or dairy farm is abundant pasture. Our Permanent Mixture yields a very heavy crop of the finest and most succulent grasses, early in the season, and is intended especially for seeding pasture grounds. No orchard grass or low grades of seeds are allowed in this mixture. Orchard grass will smother the fine tender varieties and is of little value. Seed may be sown any time. Early Spring or August seeding is preferable. Sow 20 pounds of seed per acre on well prepared soil and cover with a light drag or weeder. Seed should not be covered up very deep. On soil inclined to produce weeds one-half bushel of oats or rye may be sown per acre just before sowing this Mixture. It will help keep the weeds in check until the young grass is well established. See Price List.

## Fancy Lawn Grass Mixture

Our Lawn Grass Mixture is composed of the very best grades of seeds. These grasses will make quick growth and cover the ground in a few weeks after sowing the seed, and form a Permanent Rich Green Turf. One pound will sow 300 square feet. Lawns may be sown any time, but for best results we would advise sowing early Spring or early Fall.

## Spring Wheat (Beardless)

Our Spring Wheat has succeeded where other varieties have failed. This seed has been grown in the Northwest, and is Hardy and Productive. See Latest Price List.

## Swedish Select Oats—Northwestern Grown Seed



An extremely productive variety with tall stiff straw, bearing long heads, filled with good weight grains, weighing 36 to 40 pounds per measured bushel. This seed has been grown in the Northwest. Our experience has proved to us that all kinds of seeds grown in the North are hardier, more vigorous and more productive than Southern grown. This is true of Seed Oats. If you have been using seed with unprofitable, or just ordinary crops, try our Northern Grown Seed Oats this year, and your Oats crop should be a profitable one.

## Canada Field Peas

Canada Field Peas are usually sown with Oats for hay. It is used both as a green feed and as a fertilizer. The amount of feed produced per acre is very large. It is also very valuable feed for hay or soiling. It is readily eaten by all kinds of stock and is as nourishing as can be desired. It ranks very high as a fertilizer either when ploughed under or pastured off. We would earnestly advise our customers to use these Peas more liberally than many of them have been doing in the past, knowing that they will be pleased with the results. Sow one and one-half bushels Oats and one and one-half bushels Peas per acre. If used for hay it should be cut when the Oats heads, but before the grain is ripe. Our Seed is Northern Grown and hand picked, guaranteed to be high in Germination and very hardy. It pays to inoculate Peas with Farmogerm.

## Lancaster County Grown Seed Wheat

Possibly no other County in the world is better adapted to growing Seed Wheat. The deep fertile soil of Lancaster County produces Strong, Vigorous Seed, that has no superior. We make a specialty of Pure Seed Wheat. After the Seed is harvested and threshed it is carefully re-cleaned before shipping our customers. When in the market for Seed Wheat write for Prices and Samples. We are in position to furnish both Smooth and Bearded varieties at reasonable prices.

---

For Prices on Farm Seeds See Latest Price List

## Bountiful Yellow Dent Seed Corn

This variety of corn has yielded more bushels per acre than any other variety. It is a robust grower, and owing to its great root development, it

will stand throughout the dry season more than any other corn. Ears attain to an immense size. It is a good keeper and commands highest market price. All seed is of selected Ears. Any one purchasing seed from us can have same tested, and if not found as we represent it, same can be returned at our expense.



**Bountiful Yellow Dent**

## Improved Leaming Corn

This has long been considered one of the best Yellow Dent varieties, both for grain and fodder. It is medium early. Ears are of good size with very deep kernels. Cob is small. This corn succeeds well on nearly all kinds of soil, and produces large crops of high grade Yellow Corn. This is also a good variety to plant for Fodder and Ensilage as well as for Grain.

## Eureka Ensilage Corn

Because of great yields of fodder this variety has become very popular. Stalks grow from 12 to 15 ft. in height, and produce from three to four ears per stalk. It has been said that this variety will produce more tons of fodder per acre than any other variety. Grain will not mature in Northern States.

## Why Not Order Your Grass Seeds Now ?

All orders for grass seed for future shipment will be booked at present prices if \$1.00 per bushel is sent cash with order. The balance can be paid when you tell us to ship the seed. This will protect you from higher prices later. Freight is prepaid on all orders of three bushels or more. Bags extra. Latest Price List is sent with each catalog.

DEAR SIR :

The Grass Seed came yesterday, all right.

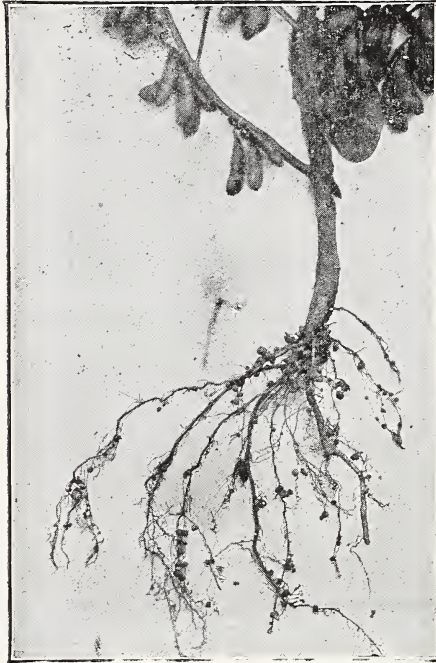
WARREN CENTER, PA., March 8, 1917.

T. C. POWELL.

**For Prices on Farm Seeds See Latest Price List**

# Grow Larger Crops      Enrich Your Soil

## Save Your Largest Fertilizer Bill



Nitrogen Nodules on the Roots of Soy Beans

Nitrogen is the most essential element of plant food, the most costly, and most difficult to retain in the soil. All legumes, (clovers, alfalfa, cow peas, soy beans, peanuts, vetches, etc.) when treated with Farmogerm, add **Nitrogen to the Soil**. The source of this nitrogen is the air, made available by the activity of Farmogerm bacteria in nodules on the plant root. **No Commercial Nitrogen is required when Farmogerm is properly applied.**

**Root Nodules contain 16 times the amount of Nitrogen contained in Stable Manure. A Legume Crop well supplied with Bacteria, under favorable conditions, will furnish Nitrogen equal in amount to that supplied by 800 to 1000 pounds of Nitrate of Soda, at very little cost.**

Without nitrogen plants cannot live, and without the proper bacteria legumes cannot draw nitrogen from the air for their own use or add it to the soil. Crop failures are frequently due entirely to lack of inoculation. Farmogerm supplies the proper bacteria in the highest state of nitrogen-gathering activity. Farmogerm is a pure culture of high-bred, active nitrogen-gathering bacteria, put up in a container so constructed as to allow a constant supply of air to feed the bacteria their necessary nitrogen. This atmospheric nitrogen passes thru a glass tube in the stopper which is plugged with cotton to filter

out contaminations. Because of this patented stopper Farmogerm bacteria will keep for years. Farmogerm does not have to be used within a few days, as is so often recommended in the case of other cultures. Unless soil is very unfavorable, Farmogerm will:—

1. Increase legume crops, giving quicker growth, a larger crop, and earlier maturity.
  2. Increase the food value of legumes.
  3. Make legumes grow in new localities where they cannot be grown successfully without inoculation.
  4. Supply nitrates to other crops growing with the inoculated legume crop.
  5. Enrich the soil for future crops, thereby increasing the permanent value of the farm.
- Better crops—better soil—less fertilizer—less labor.

“The importance of using selected seed for all crops has been so amply demonstrated that no argument in favor of the practice is needed. It is the very foundation of progress in plant culture. Soil bacteria are no exception to the rule, and pure-bred bacteria for specific work are as clearly an economic necessity as pure-bred cattle or pure-bred sugar beets.”—Extract Yearbook of Dept. of Agriculture for 1906.

THE STANDARD INOCULATION

# FARMOGERM

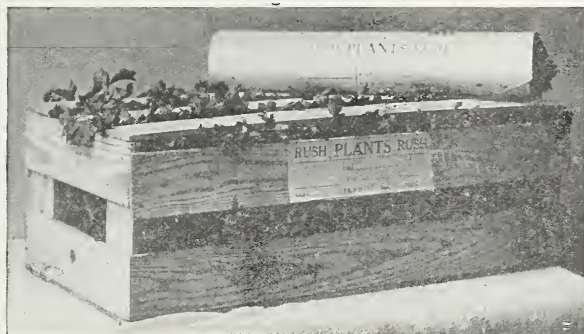
HIGH BRED NITROGEN GATHERING BACTERIA  
FOR CLOVERS, ALFALFA, BEANS, and OTHER LEGUMES

Each legume requires its particular strain of bacteria. Cow peas must have cow pea bacteria, soy beans, soy bean bacteria, etc. Farmogerm is prepared for all legumes. Specify what crop is to be planted when ordering.

Garden size, 50c; 1 acre size, \$2.00; 5 acre size, \$7.50. Postage or express prepaid.

# PLANTS THAT GROW

Why take Chances on Your Crop when you can Buy Strong, Stocky Plants, Guaranteed to Reach You Promptly in Good Condition?



Parcel Post Packages

Plants are grown from the best strains of seed obtainable. All the leading varieties. Strong, transplanted plants. Well hardened and shipped in our special ventilated packages will reach you quickly in good condition. **You take absolutely no chances. Our Guarantee Protects You. The Postage and Express Charges are Prepaid** on all plants at prices quoted in this catalog. Small orders (2,000 plants or less) are usually sent by Parcel Post. Mention Express and Post Office address with every order, and state distance you live from each.

Ready March 15th to June 25th

## Early Beet

Early Sure-Go      Early Eclipse

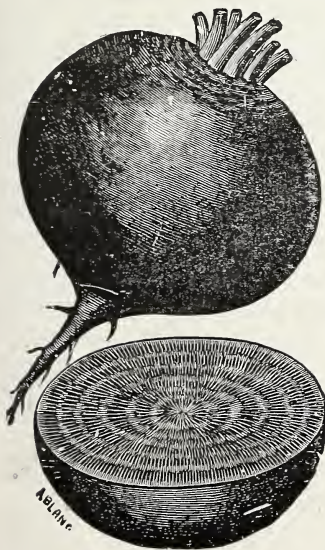
Dozen, 12c. 100, 65c. 500, \$2.50. 1000, \$4.50.

## Everybody's Favorite Plant Collection

Much valuable time is saved when a large number of orders can be put up exactly alike. Buying this collection gives you the benefit of the saving. The varieties used are the best we know and no changes will be made in this collection at this reduced price.

- 2 dozen Early Beet
- 2 " Early Cabbage
- 2 " Head Lettuce
- 2 " Tomatoes
- 2 " Early Celery

Ten Dozen Plants (actual value, \$1.50) Postpaid to you for only \$1.00.



## Early Cabbage

The Early Jersey Wakefield, Copenhagen Market and Early Summer can be considered the most profitable sorts.

The Copenhagen Market is several days later than the Wakefield, but it is larger in size and its superior qualities have made it very popular.

The Early Summer is a flat-headed variety. It matures 10 days later and is a sure header.

Early Cabbage in car lots usually commands good prices on the large city markets. It is easily grown and persons located near a railroad station should consider it as one of the most profitable early crops. Ten to twelve thousand plants are required per acre.

Dozen, 20c. 3 dozen, 50c. 100, \$1.00. 500, \$3.90. 1,000, \$7.00.



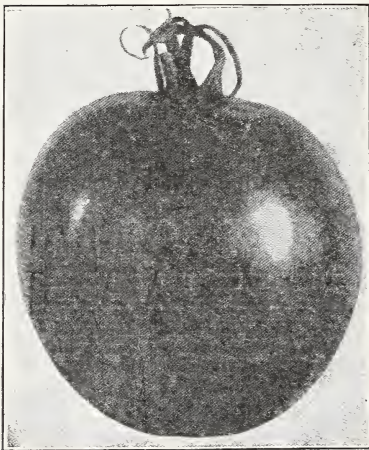
**Copenhagen Market**

Ready April 1st.

## Early Snowball Cauliflower

Plants are produced from seed that we import especially for growing these plants. If care is exercised not to stunt the plants, handsome large white heads can be expected.

Dozen, 20c. 100, \$1.25. 1,000, \$7.50.



**Early Fourth of July**

## Tomato

Spark's Earliana	Dwarf Stone
Early Fourth of July	Matchless
Ponderosa	Livingston Stone
Chalk's Jewel	H. Selected Globe

The Early Fourth of July seems to be the most popular all around variety. It ripens only a few days later than the Earliana. It is more perfect in shape and color, and yields an abundance of handsome fruit until late in the season.

All varieties—8-inch plants. Dozen, 20c. 3 dozen, 50c. 100, \$1.00. 1,000, \$7.00.



## Lettuce

Grand Rapids and Big Boston are grown in large quantities. Our Strain of Big Boston produces immense solid heads, very desirable for the home garden or market. Dozen, 12c. 100, 75c. 1,000, \$5.00.

**Ready May 1st. Ruby King Pepper Chinese Giant**

Dozen, 20c. 3 dozen, 50c. 100, \$1.25. 1,000, \$8.50.

**Ready May 1st. Sweet Potato Yellow Nansemond**

Dozen, 12c. 100, 45c. 1,000, \$3.50.

**Black Beauty Egg Plants N. Y. Imp. Spineless**

Six Plants, 15c. Dozen, 25c. 100, \$1.50. 1,000, \$10.00.

**White Plume Early Celery Golden Self Bleaching**

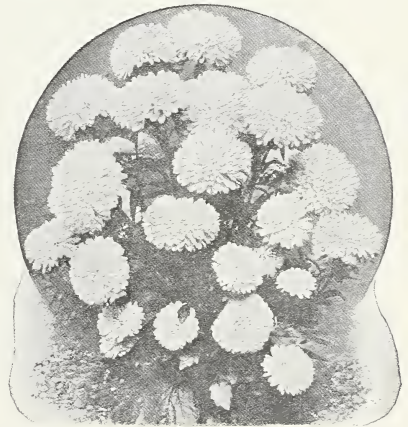
The early crop is easily grown and usually brings fancy prices.

Dozen, 12c. 100, 75c. 1,000, \$5.00.

**Queen of the Market Asters (Mixed Colors Only)**

**Why Not Plant Some Asters?** They will add to your pleasure and increase your profits. The Queen of the Market Aster is easily grown and usually is in full bloom two weeks before most other sorts. The blooms are produced on good long stems in great abundance. Several hundred plants often times could be planted in spare corners that would greatly improve the appearance of the surroundings and the blooms sold for profit. Our Mixture consists of a wide range of many of the most beautiful colors that will please you.

Dozen, 12c. 3 dozen, 25c. 100, 65c. 1,000, \$3.75.



Queen of the Market Aster.

## Salvia Bonfire

Each, 5c. Dozen, 50c. 3 dozen, \$1.00. 100, \$2.50.

## Coleus

Each, 5c. Dozen, 50c. 3 dozen, \$1.00. 100, \$2.50.

## Pansies

Each, 5c. Dozen, 35c. 100, \$2.75. (Plants Ready March 15th to June 1st)

## Field Grown Plants

Vigorous, healthy plants are essential. All varieties are grown on different soil each year. Field Grown Plants are grown in rows 10 inches apart. As soon as the young plants appear, wheel-hoes are brought into use. Plants are kept well cultivated; are stocky and develop a strong root system. A digging device running underneath the plants prevents tearing the roots. When you buy plants from us, **you get the Roots, too**, and can expect safe arrival of stocky, robust plants that will be **Profitable to You from the Start**.

Ready June 1st to Aug. 1st.

### Cabbage Plants

Copenhagen Market  
Danish Ballhead

Succession  
Stonehead

Reliable  
Flat Dutch

Dozen, 10c. 100, 45c. 1,000, \$2.50.

Ask for prices in large quantities.

### Beet Plants

Prize Red Mangles and New Century. Prices same as on late Cabbage Plants.



### Snowball Cauliflower

The Cauliflower Plants we offer are grown from seed that we import, and are Reliable headers. Dozen, 15c. 100, 50c. 1,000, \$2.75.

Ready June 15th.

### Field Grown Tomato Plants

Dozen, 15c. 100, 75c. 500, \$2.25. 1,000, \$3.75.

Ready July 1st.

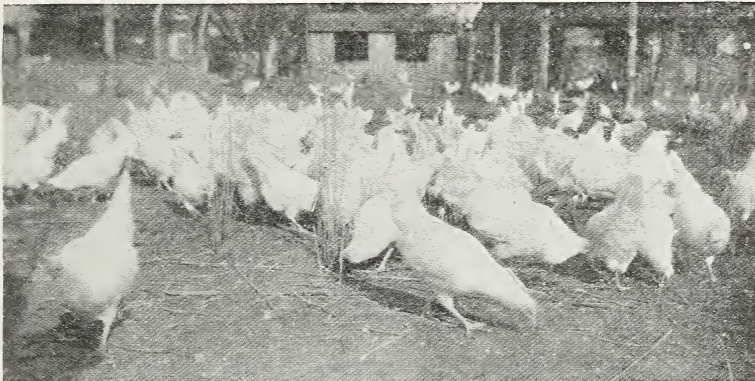
### Celery Plants for the Main Crop

Golden Self Bleaching, White Plume, White Solid, Giant Pascal, Winter Queen.

Dozen, 10c. 100, 55c. 1,000, \$2 85.

## POULTRY DEPARTMENT

You will find listed below, seven of the most profitable and well known breeds of poultry that are bred to-day. From these varieties we can furnish Day-Old Chicks, Eggs for Hatching and Breeding Stock. All our stock is *Guaranteed Pure Bred* and are *Bred for Egg Production*. Each breed is kept on separate farms to prevent cross-breeding. Our best efforts are to produce stock that is *Large in Size, Vigorous and Healthy*. *The Low Price and High Quality* of our stock will be certain to *Save You Money*. We do all we can to help you no matter if the order is for Eggs, Chicks or Stock. You will not get *Greater Value Elsewhere*.



One of Our Many Flocks

### OUR VARIETIES

**S. C. W. Leghorns.** A lengthy description is unnecessary. Their good qualities are so well known. *They are the greatest Egg Producers of all Breeds*. Their eggs are white shelled, and bring 10c to 20c more per dozen than brown shelled eggs on the New York market. We have *American and English Strains*. They are the *Big Kind*, and have *Lay Over Combs*.

**S. C. Brown Leghorns.** This breed has the same good qualities as the S. C. W. variety and many prefer them because of their dark color. *They are Pretty*. The chicks resemble partridges and opening our nurseries filled with these beautiful "Brownies" is a sight to please any one.

**S. C. Black Minorcas.** This variety closely resembles the Leghorns, but are larger and have glossy black plumage. They lay the largest white egg of any chicken. If you like a black chicken this is the breed for you.

**S. C. Rhode Island Reds.** No better medium sized breed can be found than the "Reds." They are very active and productive. Are noted for their hardiness and the chicks are very easily raised. *Our Stock of Reds are Thoroughbreds and won't Disappoint You.*

**White and Barred Rocks.** For market poultry and large early broilers, you want the Rocks. Our stock in this variety is from one of the best Egg Strains in this country. They lay when eggs are high and will prove to be the *Money Makers for You.*

**White Wyandottes.** This breed is the *Acme of Perfection.* Wyandotte Chicks at one pound each make what is known on the city market as *Fancy Squab Broilers*, and when hatched early bring *Fancy Prices.* At this age they are plumper than chicks from any other breed and have the deep yellow skin and legs. As egg producers they are coming out ahead, having won the egg laying contest over all the other breeds at one of the largest contests held in the Eastern United States.

## Our Specialty is Day-Old Chicks

**Chicks.** We were pioneers in the Day-Old Chick Business. Many of the most prominent breeders were slow in taking up this way of selling their stock. After seeing the demand and advantage to their customers they now sell chicks.

Many years of "Successful" experience in packing and shipping chicks prove to us it is the most reasonable, economical and convenient way of getting foundation stock or new blood into your flock. We sell chicks by the thousand to our customers to replace their old stock each year.

In hatching our chicks, we use only *New Laid Eggs*, carefully selected from healthy stock. Our machines are thoroughly washed and disinfected before each hatch. We believe in supplied moisture to get large sized and healthy chicks. This method of hatching and our Carefully Selected and Guaranteed Breeding Stock will produce the kind of chicks you want. It is the only way to produce *Good Healthy Chicks* that will live and grow for you.

*Our Special Made Shipping Nursery* is really a small brooder. So certain are we it is able to care for and protect the little "downy balls" during their ride from our hatchery to you that we *Guarantee Safe Delivery of Full Count of Living Chicks*, anywhere East of the Mississippi River.

**Surplus Chicks.** Oftentimes our hatches are better than we expect, and we have more chicks than it takes to fill our regular orders. We sell these chicks at a sacrifice to any one willing to place their order in advance for the number they could use and allow us to fill the order when we have the chicks. These chicks are equal in size, vigor and quality to any chicks we sell, only they will be from any of our varieties. *Here is Money Saved for You*, if you are not particular about the breed.

**Chick Prices.** We are able to furnish you chicks during January and February at the following prices: S. C. W. and B. Leghorns, 14c each. White Wyandotte Chicks 18c each. All the other breeds, 16c each. Surplus of the Leghorns, 10c each, and the other breeds, 12c each. Should the price of market eggs come lower we will give you lower prices on chicks. Don't overlook the surplus chicks. *We Pay the Express on All Orders for 100 or More Chicks.*

### **Eggs for Hatching (By Parcel Post or Express)**

Should you wish to purchase eggs and do the hatching yourself, send your order to us for *Good Eggs from Guaranteed Pure Bred Stock at a Low Price.* We send out only *New Laid Eggs of Good Fertility.* Eggs are shipped in light baskets with special cut fillers, making a perfect "*Shock Absorbing*" compartment for each egg. This is one of our latest developments and eggs shipped in this manner are sure to reach you in good condition and hatch well. In case of poor hatch due to poor fertility we will replace the order at half price, if 30c per setting extra is included to pay cost of packing and shipping.

**Egg Prices.** 15 eggs, \$1.35; 30 eggs, \$2.40; 50 eggs, \$3.85. 100 eggs, \$7.00. **We pay all parcel post and express charges on eggs.** Also when refilling at half price. Should the market price of eggs come lower we will give you lower prices on *Eggs for Hatching.*

**Please Note.** As a rule we can furnish S. C. W. Leghorn Chicks on a few days' notice. The other breeds should be ordered three or four weeks in advance to insure date of delivery. Many times, however, we can ship on shorter notice. *Write for Lower Egg and Chick Prices as the Season Advances.* You are looking for something that will please you and add to your profits. Why not order some of our *Guaranteed Pure Bred Chicks*, or write for attractive prices on cockerels, pullets or yearling stock.

---

### **TESTIMONIALS**

DEAR SIR:

PATTON, PA., April 14, 1917.  
Chicks arrived and all living. They are as spry as Robins and am well pleased with them.  
I remain, Yours truly, J. H. KUNTZMAN.

DEAR SIR:

POTTSVILLE, PA., April 14, 1917.  
Received to-day the Brown Leghorn Chicks in good condition. Thanks for your promptness with my order. Will boost wherever I can. Respectfully, JOHN M. SMITH.

GLICK'S POULTRY FARMS,

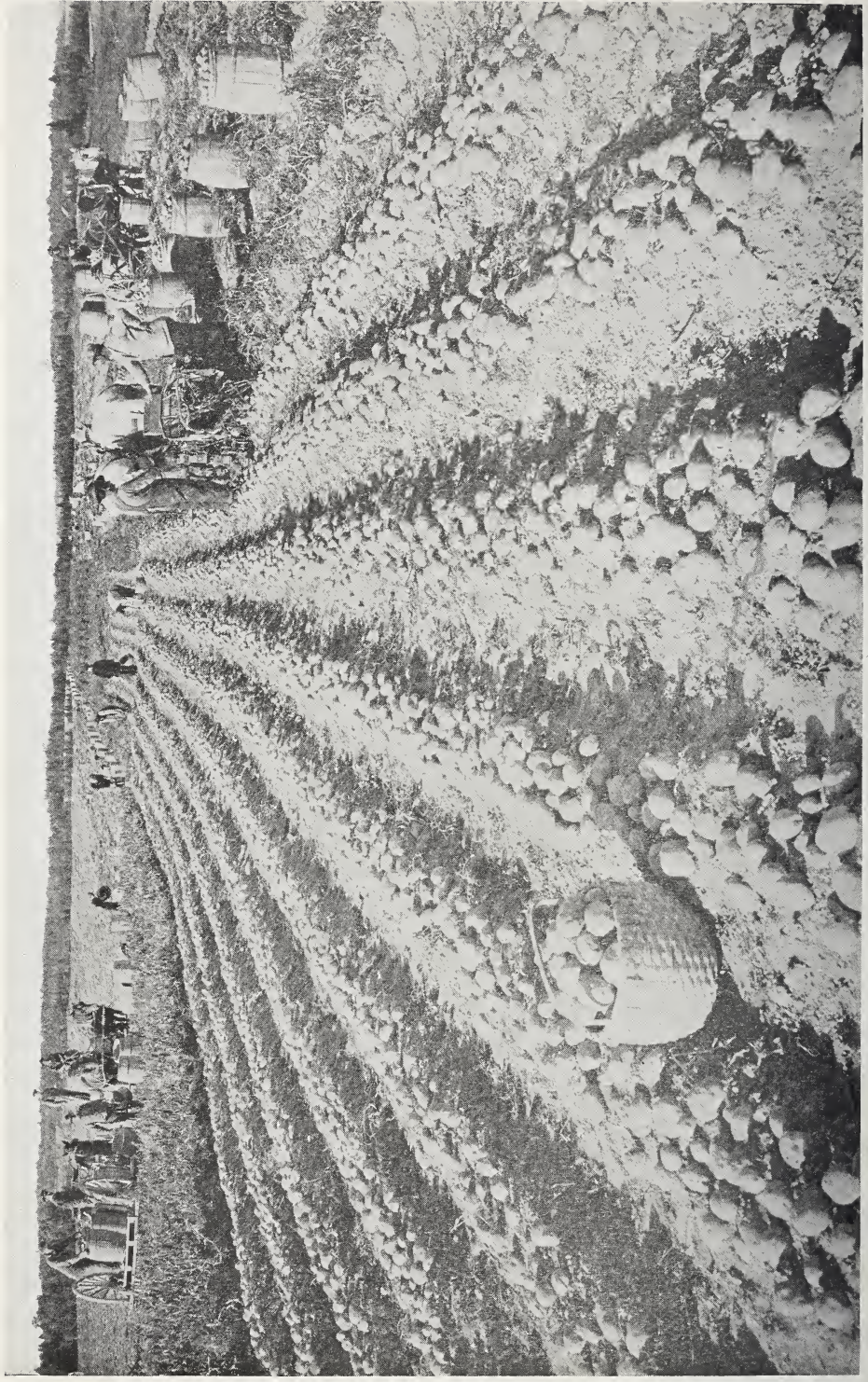
PHILADELPHIA, PA., March 29, 1917.

DEAR SIR:—Received the 50 W. Rock Chicks in excellent condition; every one a healthy chick. I am very well pleased with them and thank you for the full count of same.  
Yours very truly, EDWARD ECKERT.

---

---

**Glick's Seed, Plant and Poultry Farms**  
**SMOKETOWN, LANCASTER COUNTY, PENNSYLVANIA**



Potato Harvesting Scene on one of the Seed Farms of E. L. Cleveland Co., Aroostook County, Maine,