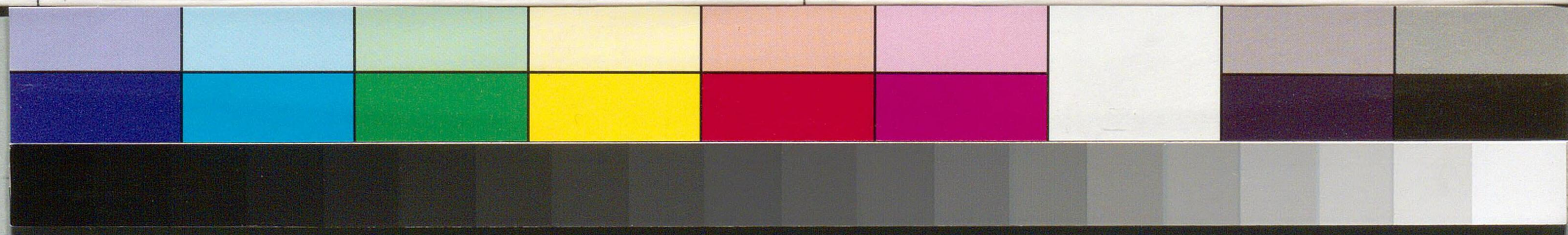
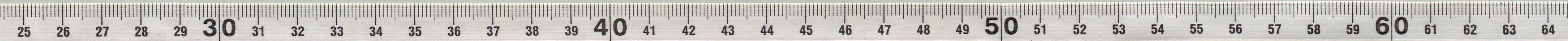
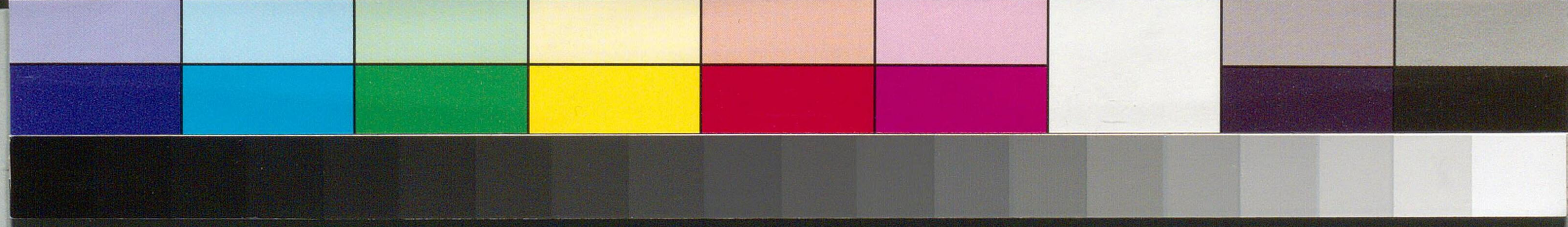


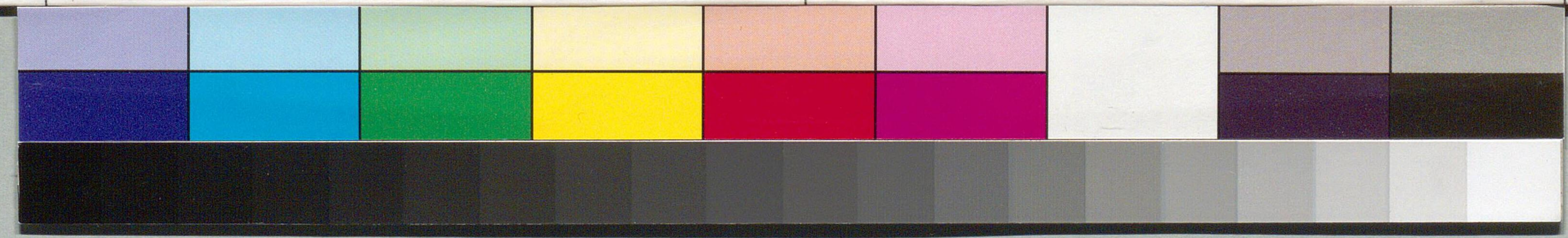
麻布市本町
尾崎三良殿



紙
岸所
尾崎三良



Handwritten text on a piece of aged paper, oriented vertically. The text is written in a cursive style, likely a form of Japanese calligraphy (sōsho). The characters are dark and somewhat faded, especially in the center. The paper shows signs of age, including creases and discoloration.



致公事見十月例午

芝山月致公事致公事

北岡之致公事致公事

小口之致公事致公事

小口之致公事致公事

十月廿日星田治郎

尾崎三良殿

致公事致公事致公事

三良

