

OpenHistoricalMap

Historical Geography Wiki style

Richard Welty - Wikiconference 2021

OpenStreetMap

- Free Map of the World
- Open Contributions (rather like wikipedia)
- Data under ODbL (conceptually similar to CC-BY-SA)
- About the Now - the world as it is

OpenStreetMap

- Geographical Database
 - API for fetching/updating data
- Data consumers
 - rendering engines
 - map editors (JOSM, ID)
- Nominatium and Overpass query engines
- Tasking Manager

OpenHistoricalMap

- Historical Spin on OpenStreetMap concept
- Similar data model and software infrastructure
- Same signup procedure/barrier to entry
- Add support for modeling of history
- Mixed licensing model (mostly CC0)

Who is OpenHistoricalMap

- Mostly not academically trained historians
- Rather, serious amateurs
- Wiki model suits who we are and where we're coming from
- Happy to bring more serious amateurs into the fold and work with them

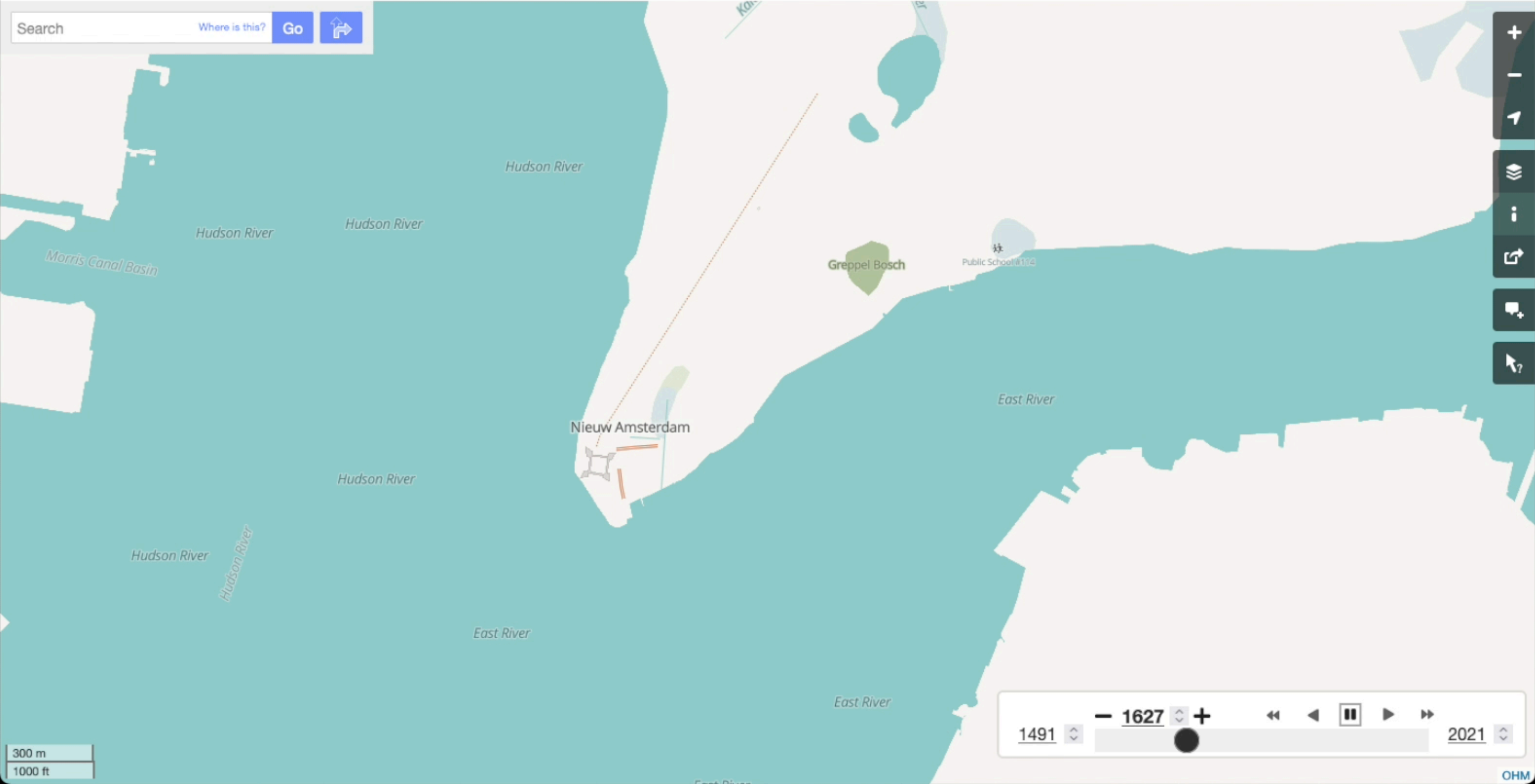
OpenHistoricalMap

- Originally an unaffiliated side project
- Went live in 2013
- 2021: formal affiliation with OSM US local chapter as a Charter Project
- Current Advisory Board: Jeff Meyer and Richard Welty
 - Advisory Board has openings. Need non-US mapper

Visualization

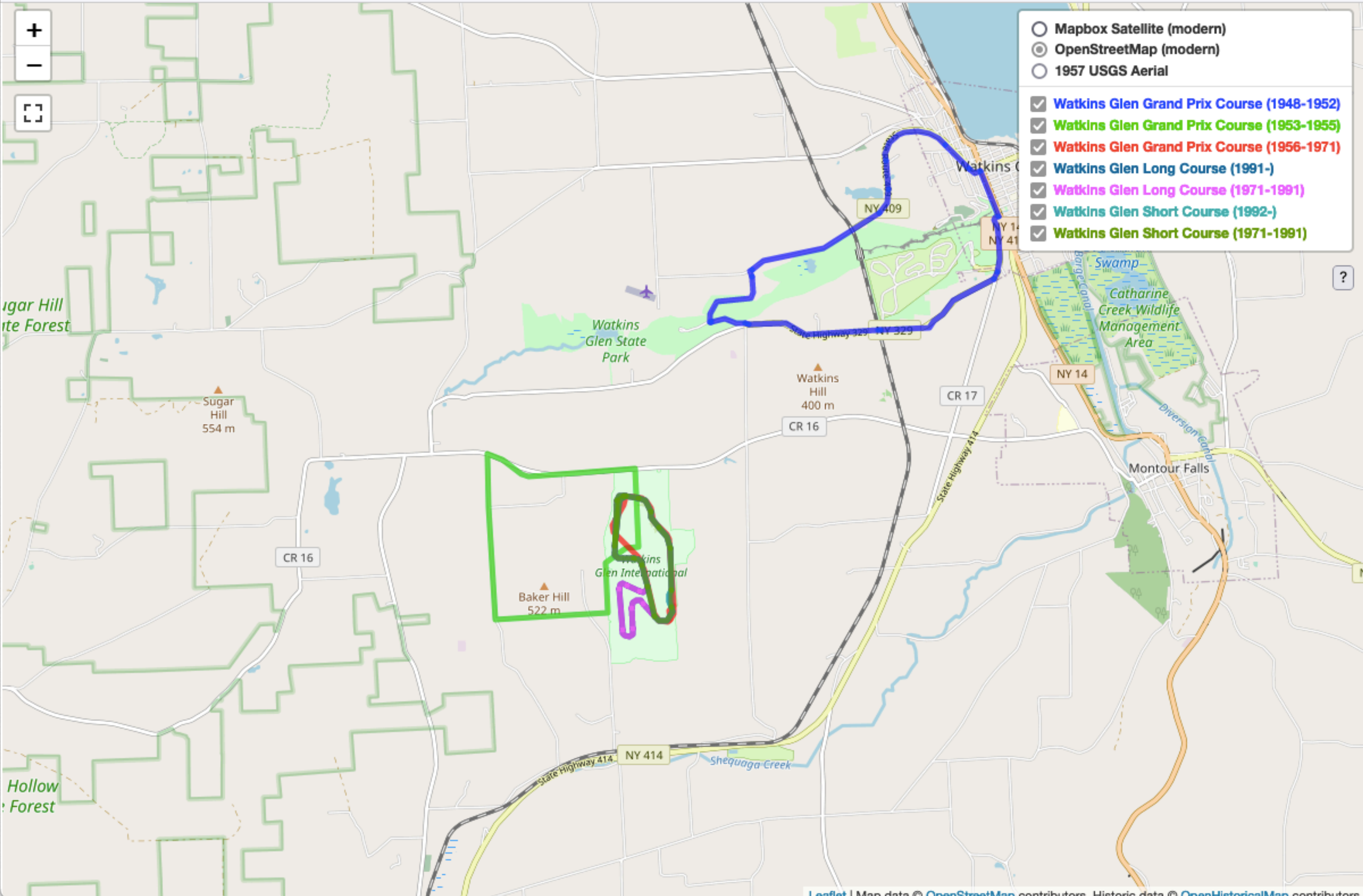
- OpenHistoricalMap has a time capable rendering engine for the website (www.openhistoricalmap.org)
- Adds the “time slider” feature (which OSM has never had because it’s not needed)
 - slide the time slider to change the year depicted
 - new in 2020
 - refinements being discussed

Search Where is this? **Go**

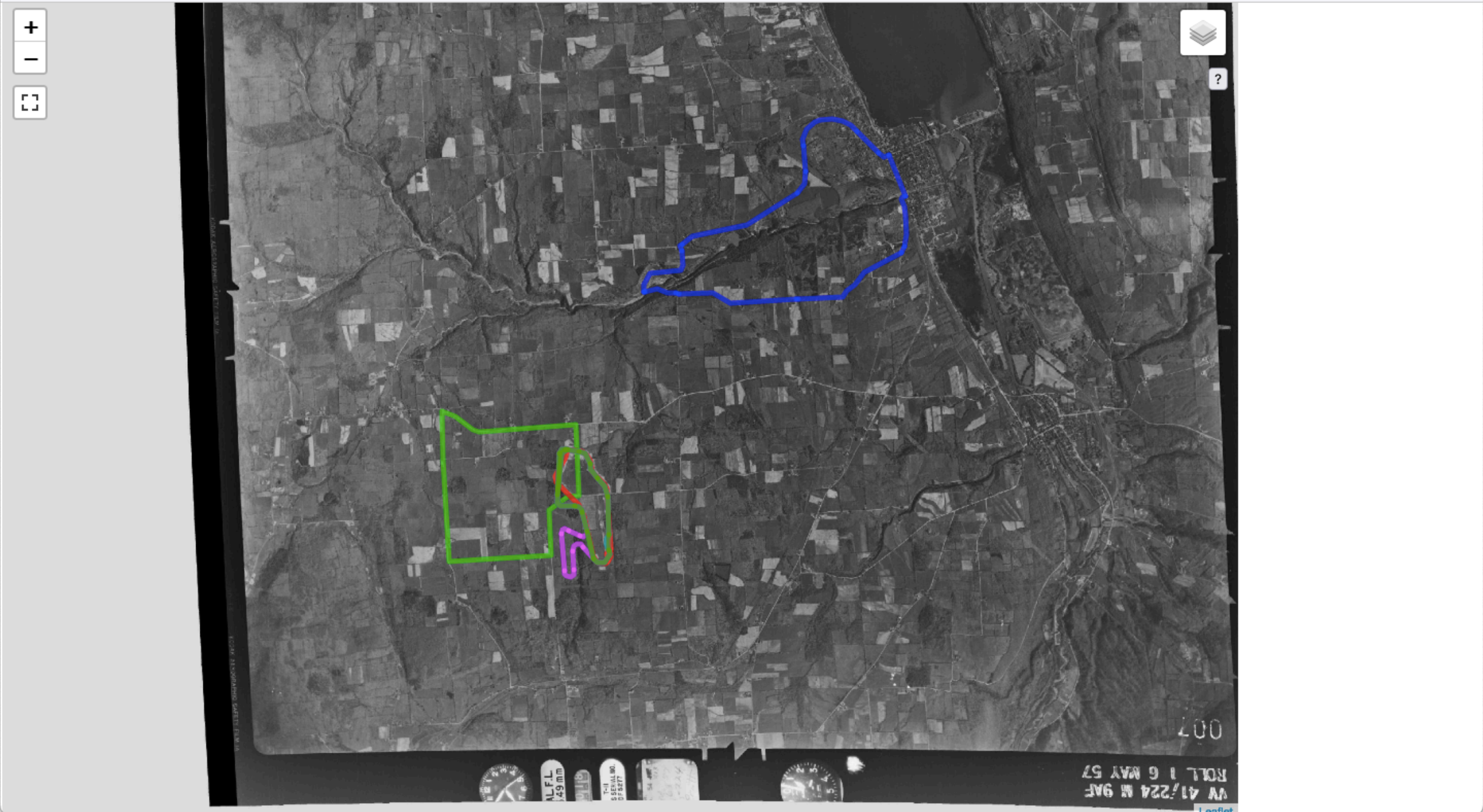


Visualization

- Specialized visualization tools for different scenarios will be springing up
 - some already exist, e.g. Ghost Tracks javascript widget
 - the Overpass query engine (built for OSM) is available, and can be called from javascript widgets or other code to support alternative visualizations
 - Event data creates a need for animation capabilities



- Mapbox Satellite (modern)
- OpenStreetMap (modern)
- 1957 USGS Aerial
- Watkins Glen Grand Prix Course (1948-1952)
- Watkins Glen Grand Prix Course (1953-1955)
- Watkins Glen Grand Prix Course (1956-1971)
- Watkins Glen Long Course (1991-)
- Watkins Glen Long Course (1971-1991)
- Watkins Glen Short Course (1992-)
- Watkins Glen Short Course (1971-1991)



Editing

- Standard OSM editors
- Time filters needed to simplify editing in temporally dense areas
- Filters are improving
 - but can be improved further

Source Materials

- Old Maps
 - LOC, NYPL, various other collections
 - oldmapsonline.org
 - USGS TopoView (<https://ngmdb.usgs.gov/topoview/>)
- Old aerials
 - USGS EarthExplorer (earthexplorer.usgs.gov)
- Most any other quality historical source

MapWarper.net

- Need to align old maps and aerials
- MapWarper not directly part of OpenHistoricalMap
 - heavily used
- Upload maps and aerials
- Align with modern coordinate system (WGS84)
- Provide the data to map editors

MapWarper.net

Show

Edit

Export

Metadata

Comments (0)



Projects - Urban Development

- Kiev
- NYC
- NY Capital District
- Boston
- Portland
- Manchester, NH
- Seattle
- Detroit
- Mansfield, WA
- Sydney, AU
- Buenos Aries
- Toronto

Projects - Infrastructure

- Highways
 - Roman Roads
 - Westward trails (US 1800s)
 - Railways
 - Early US Highway system
 - Lincoln Highway
- Canals
 - Erie and Champlain Canals in Upstate NY

Infrastructure

 OpenHistoricalMap


Edit

History

Export

[User Diaries](#) [Copyright](#) [Help](#) [About](#)

 nfgusedautoparts

Search Where is this? 



1800 2021

Projects - Diversity

- Following OSM US lead
- Interesting mapping projects abound
 - Seneca Village (NYC)
 - Rapp Road Historic District (Albany NY)
 - Native Lands (proposed)
 - Black Wall Street (Tulsa OK, proposed)

Climbing a learning curve

- Much historical data is point-in-time
 - start_date and end_date can be elusive
- Life cycle issues need to be thought through carefully
- Need expanded set of notations to accurately specify what is known about time
 - Library Of Congress EDTF for Gregorian time?
- Need to support “local units” (Julian, Roman, Asian?)

Events?

- Something OSM does not do that OHM can
- Much to learn about modeling event data
- Experiment in progress on the Antietam Battlefield (US Civil War)

Where Are We?

- www.openhistoricalmap.org
- https://wiki.openstreetmap.org/wiki/Open_Historical_Map/
- #openhistoricalmap on osmus.slack.com (very active)
- #openhistoricalmap on OpenStreetMap World on Discord
- OpenHistoricalMap group on Facebook
- @openhistmap on twitter
- me: nfgusedautoparts many places, @nfgusedautopart on twitter