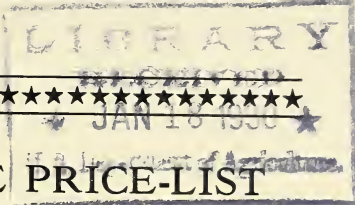


## Historic, archived document

Do not assume content reflects current scientific knowledge, policies, or practices.



62.73



# WHOLESALE PRICE-LIST

SPRING, 1930

## THE CONARD-PYLE Co.

ROBERT PYLE, *President*

WEST GROVE, PA.

*Nurserymen since 1897*



DO YOU BELIEVE IN SIGNS?

Of course you do!

Then note these signs to buy by:




①



②



③

①  "Good Luck" CANNAS

②  "Oak Brand" SHRUBS


③  R O S E S

EVERGREENS

*and*

LINING OUT STOCK

*Announcing*

THREE NEW   
"GOOD LUCK" CANNAS

Creations of the late Antoine Wintzer

Thoroughly tested to determine their fitness to add to the enjoyment of Canna enthusiasts, are these very latest arrivals in the Canna-world. Thus, you run no risk in getting them; rather, you have the opportunity to keep your list wide-awake with varieties "in the modern manner."

Mere words can only inadequately describe such marvelous creations as are offered here, but perhaps there is concrete evidence of their vast superiority in the fact that discerning representatives of the U. S. Department of Agriculture have already made a generous selection.

In order that *you* may realize fully from these modern Cannas, and acquaint *your* trade with them, would it not be well to plant a display in front of your place or at some prominent point? Not only will you be able to *personally* study these varieties, but they will advertise your business and add to your cash returns in a way to please you.

 ANTOINE WINTZER

Named in honor of the greatest Canna hybridist and enthusiast this country has ever known, this variety is the most gorgeous, dazzling crimson color yet brought forth. Great proud heads of long-petaled blooms shimmer and flash in the sunlight as they softly move in the summer breeze.

Before his passing Mr. Wintzer chose this Canna as his best red, and it is a pleasure to be able to announce this memorial to him. *Height, 4 ft.*

Dormant roots: \$3.50 each. Six for \$20.00

 COMMANDER BYRD

Richard E. Byrd, South Pole explorer extraordinary, just before sailing from Los Angeles wired consent to name for him this, one of the best near-white Cannas yet produced.

The flower heads are beautifully formed, on erect stems above the green foliage, and keep repeating until hard frost. Each single bloom is perfect, and a truss of fifteen to twenty, all showing at once, gives a cool effect during the hot summer when Cannas are in their glory. *Height, 4 ft.*

Dormant roots: \$3.50 each. Six for \$20.00

# WHOLESALE PRICE-LIST

— SPRING, 1930 —

## 卐 "GOOD LUCK" CANNAS



The new Canna, Mrs. Herbert Hoover

## 卐 MRS. HERBERT HOOVER

Mrs. Hoover, wife of the President of the United States, wrote October 12, 1928, "*Certainly anyone should feel honored in having a 'luscious, watermelon pink Canna' named after her, and because of my particular fondness for Cannas, I am specially pleased to have you make this request . . . . and I have nothing but pleasure in giving you permission to use my name in introducing your new Canna.*"

This variety, illustrated above, justifies Mrs. Hoover's enthusiasm, for the buds are deep Oriental carmine and open to immense, firm-petaled flowers of luscious watermelon pink on erect strong stems, carrying from ten to fifteen blooms on each head. The second bloom-stalks produce two and often three bloom-spikes, following close on each other, thus insuring a constant show of color, well above the dark green foliage. (*See cut*). *Height, 4 ft.*

Dormant roots: \$3.50 each.

Six for \$20.00

## PROFIT WITH 卐 CANNAS!

If you are not pushing the sale of Cannas for bedding plants perhaps you are overlooking a source of very considerable profit. It is safe to say you can get more display for less money and attract more trade, with Cannas, than by any other means.

December 10, 1929

"Personally, I cannot conceive why any one should dislike the Canna. I consider it one of the most useful and beautiful flowering plants we have in our park plantings."—Prominent Washington (D. C.), official.

# The CONARD-PYLE COMPANY

ROBERT PYLE, President

## ☛ "GOOD LUCK" CANNAS

Prices are for plump dormant divisions, 2 to 3 eyes, plus-roots. Prices of plants from 3-in. pots, ready May 1st, are same as for dormant roots except \$3 per 100 must be added on all varieties priced below at less than \$8 per hundred.

☛ American Beauty.	4 ft. Richest colored	100	1000
	Canna. Oriental carmine . . . . .	\$ 6.00	\$ 50.00
☛ Apricot.	4 ft. Rich apricot; durable . . . .	6.00	50.00
☛ Baltimore.	3 ft. Rose-pink. Color un-		
	matched . . . . .	12.00	100.00
☛ Beacon.	4 ft. Rich cardinal red . . . . .	6.00	50.00
☛ City of Portland.	3 ft. Pink bedder . . . . .	12.00	100.00
☛ Copper Giant.	4 ft. Madder red and old		
	rose . . . . .	12.00	100.00
☛ Cupid.	3 ft. Fascinating lilac rose . . . .	12.00	100.00
☛ Delicious.	3½ ft. New 1927. Lemon-		
	yellow dotted old rose . . . . .	15.00	120.00
☛ Flag of Truce.	4 ft. Cream white; pink		
	dots . . . . .	10.00	90.00
☛ Gaiety.	5 ft. Variously colored . . . . .	6.00	50.00
☛ Gold Bank.	4 ft. New 1927. Rich		
	coppery gold . . . . .	30.00	250.00
☛ Golden Wedding.	3 ft. Finest dwarf		
	yellow . . . . .	25.00	200.00
☛ Hollywood.	4 ft. New 1927. Outstand-		
	ing color. Orange pink . . . . .	30.00	250.00
☛ Honolulu.	3 ft. New 1927. Bronze leaf		
	<i>City of Portland</i> . . . . .	35.00	300.00
☛ King Humbert.	4 ft. Orange. Red leaf . . . . .	6.00	50.00
☛ King Midas.	5 ft. The <i>Gold Canna</i> . . . . .	12.00	100.00
☛ Laird's Favorite.	4 ft. Orange yellow . . . . .	15.00	
☛ Louis Cayeux.	4 ft. Giant rosy scarlet . . . . .	12.00	100.00
☛ Mohawk.	5 ft. A bronze-leaved <i>President</i> .	9.00	75.00
☛ Montezuma.	3½ ft. New 1927. Very		
	rich red. Bronze leaf . . . . .	35.00	300.00
☛ Mrs. Alfred Conard.	4 ft. The favorite		
	old pink . . . . .	15.00	120.00

### ☛ MRS. PIERRE S. du PONT

For sheer beauty, unequalled. The queen of all bright pink Cannas. Individual flowers very large, and hold up well in hot sun. Continuous bloom till frost. Suggest use as dividing-fence between properties.

Once \$150 per 100, Wholesale

Now \$35 per 100

☛ Nokomis.	5 ft. Crimson. Bronze leaf.	6.00	50.00
☛ Palm Beach.	3½ ft. Rivals orchids.		
	Maize yellow . . . . .	12.00	100.00
☛ Paulina.	3 ft. Rich orange red bedder . .	15.00	
☛ Razzle Dazzle.	4 ft. Dazzling crimson		
	maroon and yellow . . . . .	18.00	150.00
☛ Snow Queen.	4 ft. White in mass; pink		
	dots . . . . .	15.00	
☛ Statue of Liberty.	6 ft. Flame red.		
	Bronze leaf . . . . .	7.00	
☛ Susquehanna.	3 ft. Old rose bedder . . . . .	10.00	90.00
☛ The Ambassador.	5 ft. Like <i>Mohawk</i> . . . . .	10.00	90.00
☛ The President.	4 ft. Most popular red . . . . .	6.00	50.00
☛ Victory.	3 ft. Improved <i>Apricot</i> . . . . .	6.00	50.00
☛ Vulcan.	3 ft. Cardinal red; ebony stems.	7.00	60.00
☛ Wintzer's Colossal.	5 ft. <i>Big</i> vivid		
	scarlet . . . . .	7.00	60.00
☛ Wyoming.	7 ft. Orange. Purple leaf . . . .	6.00	50.00

Varieties marked ☛ introduced by the Conard-Pyle Company



# WHOLESALE PRICE-LIST

SPRING, 1930



## CLIMBING ROSES

Have you ever thought that this particular class of Roses is one of the most profitable for you to handle? You may have difficulty in selling Hybrid Teas, but with these you can get order after order by a little tactful sales talk. Emphasize (1) their dependability and hardiness, (2) their flexibility in use, (3) their profusion of blooms and (4) their value as "vines".

Stress particularly that second point "flexibility". It is almost impossible to think of a plant-use to which these Roses cannot be put. Trailing; close-hugging ground-covers or borders; low shrubs; training on wires; low hedges (by connecting-canecovers); covers for fences; screens; decorative pillars; over pergolas, summer-houses, arches, porticos; on porch roofs and garlanded on chains or ropes.

Increase your sales with Climbing Roses!

### No. 1 dormant 2 year, field plants, Eastern grown mainly on Multiflora

<b>Breeze Hill.</b> Double pink. Extra good. One of Dr. Van Fleet's.....	Per 100 \$45.00
<b>Chamisso.</b> Cream yellow. Showy all season.....	40.00
<b>Cli. American Beauty.</b> Crimson, like bush.....	25.00
<b>Cli. Mme. Butterfly.</b> Climbing form of popular sa'mon pink. Tender.....	40.00
<b>Coronation.</b> Sprays of cherry red flowers, marked with white.....	25 00
<b>Dorothy Perkins.</b> The popular pink.....	20.00
<b>Dr. W. Van Fleet.</b> Tops list of Hardy Climbers. Apple-blossom-pink.....	25.00
<b>Evangeline.</b> White, tipped with pink.....	25.00
<b>Excelsa.</b> Red <i>Dorothy Perkins</i> .....	20.00
<b>Fernand Rabier.</b> Two shades deeper than <i>Ex elsa</i> . Stands sun.....	50.00
<b>Gruss an Freundorff.</b> Not quite as maroon as <i>Dr. Huey</i> . Does not burn.....	50.00
<b>Hiawatha.</b> Most brilliant red of cluster-flowered late climbers.....	20.00
<b>Ile de France.</b> Double <i>American Pillar</i> .....	50.00
<b>Lady Gay.</b> Like <i>Dorothy Perkins</i> .....	20.00
<b>Mme. Gregoire Staechelin</b> (Cli. HP.) The New <i>Spanish Beauty</i> . (See Page 6).....	150.00
<b>Mme. Sancy de Parabere.</b> First to bloom. Clear pink.....	50.00
<b>Mary Lovett.</b> Large flowering white climber. Repeat bloomer.....	35.00
<b>Papa Gouchault.</b> Modern <i>Crimson Rambler</i> .....	50.00
<b>Paul Noel.</b> Red wood, glossy foliage. Salmon-orange	30.00
<b>Paul's Scarlet Climber.</b> The most vivid scarlet. Fine pillar rose.....	25.00
<b>Souv. de Claudius Denoyel.</b> Most desirable red pillar rose we know.....	50.00
<b>The Beacon.</b> Red <i>American Pillar</i> .....	35.00
<b>White Dorothy.</b> White <i>Dorothy Perkins</i> .....	20.00
<b>Wichuraiana.</b> White. <i>The Rose</i> for covering banks. Sticks close to its job.....	20.00

# The CONARD-PYLE COMPANY

ROBERT PYLE, President

## ★ ROSES

### NEW SPANISH BEAUTY

“*Twill put you ahead and make you money*”

Rose, *Mme. Gregoire Staechelin* (Cl. HP.)

First Climbing Rose to win the coveted Bagatelle Medal, this variety was introduced in America early Spring, 1928, by The Conard-Pyle Co., who originally discovered it at Barcelona, Spain.

A new type of Hardy Climber, its parents are Frau Karl Druschki and Chateau de Clos Vougeot. It retains the vigor, hardiness and size of bloom of Druschki with the perfume of the red Vougeot.

The color of Staechelin is iridescent. Pearl pink with claret carmine markings on outer petal.

You will have calls for this miracle Rose of many uses. Being a true climber *Mme. Gregoire Staechelin* can be trained on wire fences, pergolas and tall pylons. As a pillar, it can be trained around a stout post.

Keep your trade by keeping up-to-date. Sell Staechelin!

No. 1 dormant 2 year field plants on Multiflora

\$1.50 each.

\$150.00 per 100.

## HYBRID PERPETUALS

*FASHIONABLE AGAIN AND RIGHTLY SO*

No. 1 dormant 2 year field plants on Multiflora

<b>Frau Karl Druschki.</b> <i>White American Beauty</i> .....	100	\$30.00
<b>General Jacqueminot.</b> The 77-year-old red <i>Jack</i> Rose	35.00	
<b>J. B. Clark.</b> Grand pillar. Immense scarlet-crimson	35.00	
<b>John Russell.</b> Good upright grower; glistening scarlet-cerise.....	60.00	
<b>Paul Neyron.</b> About the largest Rose in circulation. Clear pink.....	35.00	
<b>Ulrich Brunner.</b> Extravagant bloomer. Bright cherry red.....	35.00	

## RUGOSAS & OUT-OF-THE-ORDINARY

*THEY MAKE EFFECTIVE HEDGES OR SPECIMEN BUSHES*

No. 1 dormant 2 year field plants on Multiflora

<b>Agnes.</b> Nearest yellow Rugosa.....	100	\$50.00
<b>Amelia Gravereaux.</b> The only truly climbing ever-blooming Hybrid Rugosa. Bouquets of crimson scarlet	35.00	
<b>Conrad F. Meyer.</b> One of the finest. Excellent for trellis. Silvery pink.....	35.00	
<b>Glenn Dale.</b> Vigorous climber. Winner of certificate of merit at Bagatelle. Tawny yellow.....	40.00	
<b>Le Reve.</b> Pillar or specimen. Early buttercup yellow	40.00	
<b>Nova Zembla.</b> Sport of <i>C. F. Meyer</i> . White, flushed pink.....	35.00	
<b>Stern von Prag.</b> Like an H.P. Deep purplish crimson.	50.00	
<b>Turke's Rugosa.</b> Improved <i>Conrad F. Meyer</i> .....	40.00	
<b>Zepherine Drouhin.</b> <i>Repeat</i> blooming, deep pink. Cli. Bourbon.....	40.00	



# WHOLESALE PRICE-LIST

SPRING, 1930

## ★ ROSES

**SUGGEST HUGONIS for HEDGES**  
**SPRIGHTLY SPECIMENS and BANG-UP BORDERS**

“Golden Shrub-Rose of China”

The Arnold Arboretum, Boston, Mass., contains the greatest collection of hardy flowering plants in this country. E. H. Wilson, Keeper, says: “As to the Rosa Hugonis, it should be in every garden, for it is the best of all hardy yellow-flowering Roses, and one of the most lovely plants known.”

Your strongest talking points on this new-day *flowering* hedge-plant are (1) extreme hardiness (2) habit of blooming early (in May) (3) quantity and quality of clear yellow Hollyhock-like blooms and (4) beauty all season, with slender arching branches and beckoning maroon-colored new growths.

Nothing more beautiful can be imagined than a hedge of HUGONIS in full bloom. Hinge important sales upon this point, stressing the fact that such an exceedingly attractive display will add surprisingly to the appearance and distinction of home-grounds. Advise your clients to set the plants 1½ to 2 feet apart, and tell them that HUGONIS blooms best when planted in poor soil; do not feed or prune this Rose or it will grow to foliage and will not bloom.

You can also secure delightful effects with HUGONIS for specimens and borders but, to raise your volume quickly, *suggest it for hedges!*

“Hugonis Hedge Is Lovely Beyond Description”

March 30, 1929

My Rosa Hugonis hedge is lovely beyond description now. I look with amazement at people who have the money to spare who do not buy flowers, when we who have to economize so to get them can get such pleasure from the little we are able to buy.—Mrs. J. D. B., Kingstree, S. C.

**Dormant 2 year field plants on their own roots.**

	100	1,000
1½ to 2 ft.....	\$30.00	\$250.00
2 to 3 feet.....	40.00	350.00
250 at 1000 rate		



40,000 here and have grown half as high again since this photo was taken.

★ ROSES

HYBRID TEAS

No. 1 dormant 2 year field plants on Multiflora



*The prize-winning Souv. de Georges Pernet*

**BETTY UPRICHARD** (*Two-toned pink*)

Rivals the well-known *Radiance* in height and blooming. A foremost variety for everybody's garden, and one of those easy-to-grow varieties for the beginner to "cut his teeth" on. Brilliant copper-red buds; average size salmon pink flowers with copper pink outside. \$35.00 per 100.

**DUCHESS OF WELLINGTON** (*Universal yellow*)

It will accommodate itself to poor conditions and prosper where other yellows would fail. Long-pointed buds changing from deep orange-yellow to lemon and lighter shades. A typical bedding Rose, at its best when several plants are set together. \$35.00 per 100.

**LADY ASHTOWN** (*"Belle" among pinks*)

This Lady celebrated her Silver Jubilee last year but is still the undisputed "belle of the ball" in even pink Roses. Blooms brilliant shining pink with a golden underglow, unsurpassed in rose colors. Flowers over a long season, and is very useful for cutting. \$35.00 per 100.

**REV. F. PAGE-ROBERTS** (*Front rank yellow bedder*)

If on a *Radiance* bush would be a master piece. Not easy to start and when first planted should be cut back in the Spring to about 2 inches. Color Indian yellow washed with deep carmine which "runs" but never disappears. Blooms famous for lasting qualities. Foliage dark olive green, rather scant and not over-persistent. Plant low-growing and branching, putting it in front rank as mass bedder. \$50.00 per 100.

**SOUV. DE GEORGES PERNET** (*Prize-winning pink*)

A glorious Rose unmatched for form and color. Large brick-red buds opening to old-rose-pink flowers of gigantic size. Blooms long-lasting. Stout, branching plant, not a profuse bloomer, but a prize-winner at all shows. An effective bedder. \$35 00 per 100. (*See cut*)

# WHOLESALE PRICE-LIST

SPRING, 1930

## LINING-OUT SHRUBS

Weil-established plants from 2¼ in. pots, except as otherwise indicated. 250 of a kind at the thousand rate.



The choice border plant—*Abelia grandiflora*

	100	1,000
<i>Abelia grandiflora</i> ( <i>Glossy Abelia</i> ) (See cut) ..	\$10.00	\$90.00
<i>grandiflora</i> ( <i>Glossy Abelia</i> ) (3-in. pots)	15.00	
<i>grandiflora</i> ( <i>Glossy Abelia</i> ) (4-in. pots)	20.00	
<i>Ampelopsis tricuspidata</i> ( <i>Japanese Creeper</i> )	8.00	65.00
<i>tricuspidata</i> ( <i>Jap. Creeper</i> ) (4-in.)	20.00	180.00
<i>triatropurpurea</i> ( <i>Purple Jap. Cr.</i> ) .....	15.00	
<i>Buddleia d. magnifica</i> ( <i>Oxeye Butterfly Bush</i> )	7.00	60.00
<i>Clematis paniculata</i> ( <i>Sweet Autumn Clematis</i> )	7.00	55.00
<i>Cotoneaster horizontalis</i> ( <i>Rock C.</i> ) .....	12.00	100.00
<i>Deutzia cr. magnifica</i> ( <i>Magnificent D.</i> ) .....	10.00	90.00
<i>Deutzia gracilis</i> ( <i>Slender D.</i> ) .....	7.00	60.00
<i>lemonei compacta</i> ( <i>Dwf. 1. D.</i> ) ..	10.00	80.00
<i>Euonymus japonicus</i> ( <i>Evergreen Burningbush</i> )	7.00	60.00
<i>radicans</i> ( <i>Wintercreeper</i> ) .....	7.00	60.00
<i>radicans acutus</i> ( <i>Sharpleaf W.</i> )	12.00	100.00
<i>rad. minimus</i> ( <i>Baby W.</i> ) .....	10.00	90.00
<i>radicans vegetus</i> ( <i>Bigleaf W.</i> ) ..	12.00	100.00
<i>rad. vegetus</i> ( <i>Bigleaf W.</i> ) (3-in.)	15.00	125.00
<i>Forsythia int. spectabilis</i> ( <i>Showy Border F.</i> )	10.00	80.00
<i>Hedera helix</i> ( <i>English Ivy</i> ) .....	6.00	50.00
<i>Hibiscus syr. Wm. R. Smith</i> ( <i>Althea</i> ) .....	12.00	100.00
<i>Kolkwitzia amabilis</i> ( <i>Beautybush</i> ) .....	18.00	150.00
<i>Philadelphus Argentine</i> ( <i>Silverleaf M.</i> ) .....	15.00	135.00
<i>Avalanche</i> ( <i>Dwf. Mockorange</i> )	7.00	60.00
<i>Bouquet Blanc</i> ( <i>White B.</i> ) ..	7.00	60.00
<i>brachybotrys</i> .....	15.00	135.00
<i>Enchantment</i> ( <i>Imp. Wh. B.</i> )	15.00	135.00
<i>Glacier</i> .....	15.00	135.00
<i>Virginal</i> .....	12.00	100.00
<i>Spirea Anthony Waterer</i> ( <i>Watere Spire</i> ) ..	7.00	60.00
<i>prunifolia fl. pl.</i> ( <i>Beautywreath</i> ) .....	7.00	60.00
<i>thunbergi</i> ( <i>Thunberg Spirea</i> ) .....	7.00	60.00
<i>Vib. tom. plicatum</i> ( <i>Jap. Snowball</i> ) (3-in.) ..	15.00	125.00



# Oak Brand Shrubs

## Vines, Hedge Plants, Lining-Out Stock

The dot ● indicates improved varieties.

### ABELIA grandiflora.

*Glossy Abelia*

Popular for border plantings. Dainty pink and white flowers abundantly produced.

	10	100	1,000
2¼-in. pots.....	\$1.50	\$10.00	\$90.00
3-in. pots.....	2.00	15.00	

### AKEBIA quinata.

*Fiveleaf Akebia*

Dainty, beautiful vine, with purple flowers in May. Leaves deep green, persisting till winter.

	10	100	1,000
2-year.....	\$3.00	\$25.00	\$200.00
3-year.....	4.00	35.00	

### AMPELOPSIS tricuspidata (veitchi).

*Japanese Creeper*

Clings as it grows. Foliage in autumn turns crimson.

	10	100	1,000
2¼-in. pots.....	\$1.00	\$8.00	\$65.00
3-in. pots.....	2.00	15.00	120.00
4-in. pots.....	2.50	20.00	180.00
2-year field.....	3.00	25.00	200.00

### ● tricuspidata atropurpurea.

*Purple Japanese Creeper*

The habit of attaching itself firmly and closely to stonework placed *Ampelopsis tricuspidata* (Boston Ivy) in the forefront of popularity. This new variety, *Atropurpurea*, is similar to the type and possesses the added attraction of dark purple leaves not changing to green.

	10	100
2¼-in. pots.....	\$2.00	\$15.00

### BERBERIS thunbergi.

*Japanese Barberry*

Indispensable for hedges; also excellent for massing. Brilliant autumn coloring; scarlet berries.

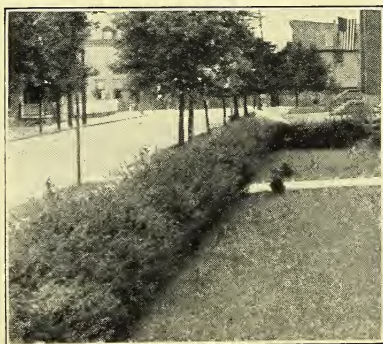
	10	100	1,000
1½ to 2 ft.....	\$1.50	\$12.00	\$100.00
2 to 2½ ft.....	2.00	18.00	150.00

### wilsonae.

*Wilson Barberry*

Bailey says of *Berberis Wilsonae*, named for Dr. E. H. Wilson, the noted plant explorer, now Keeper of Arnold Arboretum of Harvard University: "Very distinct, handsome shrub, with small foliage assuming a brilliant fall coloring. Last year's branches are reddish brown. It has proved hardy at the Arnold Arboretum (in Massachusetts) in somewhat sheltered positions." Much used for specimens.

	10	100	1000
12 to 15 in.....	\$2.50	\$20.00	\$180.00



*Japanese Barberry:* The 54-year-old still popular hedge plant.



# WHOLESALE PRICE-LIST

SPRING, 1930

<b>BUDDLEIA davidi magnifica.</b>	<i>Oxeye Butterfly Bush</i>		
Extensive bloomer, even the first year. Flowers deep violet-rose, delightfully fragrant.			
2¼-in. pots.....	\$1.00	\$7.00	\$60.00
1½ to 2 ft.....	2.00	15.00	120.00
2½ to 3 ft.....	2.25	18.00	
<b>CALLICARPA purpurea.</b>	<i>Chinese Beautyberry</i>		
Pink flowers in August; light purple berries.			
1½ to 2 ft.....	\$3.00	\$25.00	
<b>CALYCANTHUS floridus.</b>	<i>Common Sweetshrub</i>		
Spicy, fragrant, dark crimson flowers in June.			
1½ to 2 ft.....	\$4.00	\$35.00	
<b>CARYOPTERIS incana.</b> ("Blue Spirea")	<i>Common Bluebeard</i>		
Compact bushes about 2 feet tall. Flowers sky-blue.			
18 in.....	\$2.50	\$20.00	\$180.00
<b>CELASTRUS scandens.</b>	<i>American Bittersweet</i>		
Yellow flowers, followed by orange-colored berries.			
2-year.....	\$2.50	\$20.00	
<b>CLEMATIS paniculata.</b>	<i>Sweet Autumn Clematis</i>		
Intensely sweet-scented, small, creamy white flowers completely cover the vine.			
2¼-in. pots.....	\$1.00	\$7.00	\$55.00
3-in. pots.....	1.50	10.00	
2-year field.....	2.00	15.00	135.00
<b>COTONEASTER divaricata.</b>	<i>Spreading Cotoneaster</i>		
A spreading, arching shrub with extremely decorative leaves and tiny bead, or gem-like flowers. Fruits bright red and persist a long time.			
4-in. pots.....	\$4.00	\$35.00	
5-in. pots.....	6.00	50.00	
<b>horizontalis.</b>	<i>Rock Cotoneaster</i>		
A low-growing, dark, shiny evergreen with spreading branches. Suitable for rockeries. Pink flowers followed by red berries.			
2¼-in. pots.....	\$1.50	\$12.00	\$100.00
4-in. pots.....	\$4.00	35.00	
5-in. pots.....	6.00	50.00	
● <b>DEUTZIA crenata magnifica.</b>	<i>Magnificent Deutzia</i>		
A most distinct variety with exceptionally large clusters of pure white double flowers, produced in wonderful profusion. Easily the finest of all Deutzias. (See cut.)			
2¼-in. pots.....	\$1.50	\$10.00	\$ 90.00
2 to 2½ ft.....	2.50	20.00	
2½ to 3 ft.....	3.50	30.00	
3 to 4 ft.....	4.50	40.00	



The Deutzia Supreme: *Magnifica*

# The CONARD-PYLE COMPANY

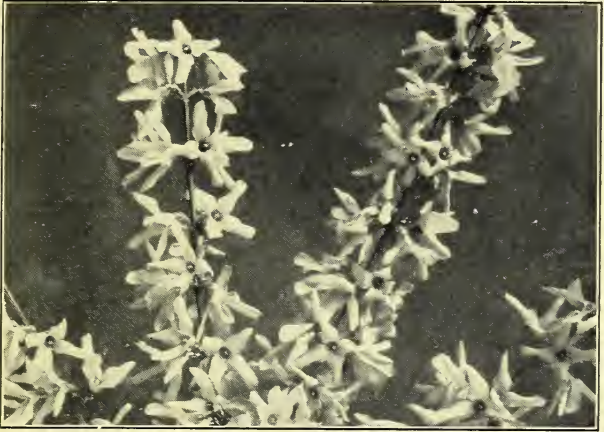
ROBERT PYLE, President

<b>(DEUTZIA) gracilis.</b>		<i>Slender Deutzia</i>		
White, bell-shaped flowers. Dwarf grower, nice for edging other shrubbery.		10	100	1,000
2¼ in. pots.....	\$1.00	\$7.00	\$60.00	
12 to 15 in.....	2.00	15.00	130.00	
<b>gracilis rosea.</b>		<i>Slender Pink Deutzia</i>		
Closely resembles <i>Slender Deutzia</i> . Light rose colored flowers. A pleasing variety.		10	100	
1 to 1½ ft.....	\$2.50	\$20.00		
<b>lemoinei.</b>		<i>Lemoine Deutzia</i>		
Early white. Much superior to <i>D. gracilis</i> .		10	100	
1 to 1½ ft.....	\$1.50	\$12.00		
1½ to 2 ft.....	2.00	15.00		
2 to 2½ ft.....	3.00	25.00		
● <b>lemoinei compacta.</b>		<i>Improved Lemoine Deutzia</i>		
Compact habit.		10	100	1,000
2¼-in. pots.....	\$1.50	\$10.00	\$80.00	
1 to 1½ ft.....	3.00	25.00		
2 to 2½ ft.....	4.00	35.00		
<b>Pride of Rochester.</b>		<i>Large-flowered Deutzia</i>		
Very vigorous grower. Large, double white flowers.		10	100	
1½ to 2 ft.....	\$2.00	\$15.00		
2 to 2½ ft.....	2.50	18.00		
<b>scabra crenata.</b>		<i>Double Pink Deutzia</i>		
Strong grower, double flowers tinted rosy white.		10	100	
1½ to 2 ft.....	\$2.00	\$15.00		
3 to 4 ft.....	3.00	25.00		
● <b>rosea eximia.</b>		<i>Improved Slender Pink Deutzia</i>		
(New). An improvement over <i>D. gracilis rosea</i> , one of the most pleasing varieties.		10	100	
2 to 2½ ft.....	\$4.00	\$35.00		
<b>EUONYMUS japonicus.</b>		<i>Evergreen Burningbush</i>		
A most ornamental evergreen shrub that is a moderate, shapely, upright grower.		10	100	1,000
2¼-in. pots.....	\$1.00	\$7.00	\$60.00	
10 to 12 in.....	2.00	15.00		
1 to 1½ ft.....	2.50	18.00		
<b>radicans.</b>		<i>Wintercreeper</i>		
A splendid covering for low retaining walls. Small rich green leaves.		10	100	1,000
2¼-in. pots.....	\$1.00	\$7.00	\$60.00	
2 year.....	2.50	20.00		
● <b>radicans acutus.</b>		<i>Sharpleaf Wintercreeper</i>		
Similar to the type, but more pointed leaves, lighter in color. A rapid grower and evidently the best <i>Euonymus</i> yet for steep banks as it is a very prostrate grower, showing no inclination to climb, roots at every place it touches soil and would be excellent to hold banks. Turns bronzed in cold weather.		10	100	1,000
2¼-in. pots.....	\$1.50	\$12.00	\$100.00	
2 year.....	3.00	25.00		
● <b>radicans minimus (kewensis).</b>		<i>Baby Wintercreeper</i>		
For rockeries this pretty variety is a delightful subject. Its small oval foliage is of a very dark green with lighter veins, and the splendid trailing habit of the plant makes it desirable also for carpeting the ground.		10	100	1,000
2¼-in. pots.....	\$1.50	\$10.00	\$90.00	
3-in. pots.....	2.00	15.00		
<b>radicans variegata.</b>		<i>Variegated-leaf Wintercreeper</i>		
Leaves green and white.		10	100	1,000
2¼-in. pots.....	\$1.00	\$7.00	\$60.00	
2 year medium.....	2.50	20.00		
2 year.....	3.00	25.00		
3 year.....	3.50	30.00		



# WHOLESALE PRICE-LIST

SPRING, 1930



Acknowledged leading Forsythia: *Spectabilis*

**(EUONYMUS) radicans vegetus.** *Big-leaf Wintercreeper*

A most beautiful vine, bearing bright red berries well into the winter.

	10	100	1,000
2¼-in. pots.....	\$1.50	\$12.00	\$100.00
3-in. pots.....	2.00	15.00	125.00
2 year.....	3.00	25.00	

● **FORSYTHIA int. spectabilis.** *Showy Border Forsythia*

Acknowledged the finest Forsythia; much more profuse-flowering than the original type, and several shades richer in its glorious deep yellow. Plants vigorous and compact. (See cut)

	10	100	1,000
2¼-in. pots.....	\$1.50	\$10.00	\$80.00
3 to 3½ ft.....	3.00	25.00	

**viridissima.** *Green-stem Forsythia*

Green bark; thick, dark green leaves. Deep yellow flowers.

	10	100	1,000
2¼-in. pots.....	\$1.00	\$7.00	\$60.00
2 to 2½ ft.....	2.00	18.00	150.00

**HEDERA helix.** *English Ivy*

Hardy evergreen clinging vine with dark, glossy green leaves. Ideal wall-cover.

	10	100	1,000
2¼-in. pots.....	\$1.00	\$6.00	\$50.00

**HIBISCUS syriacus banner.** *Shrub-Althea*

Flowers richly striped with pink and crimson. A hedge of this lovely Althea looks like a hedge of hardy Pelargoniums.

	10	100	1,000
1½ to 2 ft.....	\$2.00	\$15.00	
2 to 2½ ft.....	2.25	18.00	
2½ to 3 ft.....	2.50	22.00	

**double pink** *Shrub-Althea*

Very deep dark pink flowers.

	10	100
1 to 1½ ft. 2 year.....	\$2.00	\$15.00

**Jeanne d'Arc.** *Shrub-Althea*

Large, double, pure white flowers like roses.

	10	100
1 to 1½ ft. 2 year.....	\$2.00	\$15.00
1½ to 2 ft.....	2.50	18.00

● **Wm. R. Smith.** *Shrub-Althea*

A splendid giant-flowering variety, naturally forming symmetrical bushy specimens. Glistening pure white flowers like great morning-glories fully four inches in diameter; under ordinary cultivation they open out flat quite different from the older types which only partially expand. Blooms when few Shrubs are in flower.

	10	100	1,000
2¼-in. pots.....	\$1.50	\$12.00	\$100.00
1 to 1½ ft.....	2.50	20.00	180.00
2 to 2½ ft.....	4.00	35.00	

# The CONARD-PYLE COMPANY

ROBERT PYLE, President



*Hydrangea Arborescens Grandiflora*, 1½ to 2 ft. (July 11, 1929)

**HYDRANGEA arb. grandiflora.** *Snowhill Hydrangea*

Blooms right after early spring flowers are gone, and the great white flowers last until late August. (See cut)

	10	100	1,000
1 to 1½ ft. ....	\$1.50	\$12.00	\$100.00
1½ to 2 ft. ....	2.00	18.00	150.00
2½ to 3 ft. ....	3.00	25.00	200.00

**paniculata grandiflora.** *Peegee Hydrangea*

An old variety still in strong demand.

	10	100	1,000
2¼ in. pots. ....	\$1.00	\$7.00	\$60.00
1 to 1½ ft. ....	2.00	15.00	120.00

● **KOLKWTZIA amabilis.** *Beautybush*

(New). A graceful, ornamental shrub closely related to the Abelias and Weigelas. Blush-pink flowers, like Weigela blooms, almost completely cover the bush. Recommended by Dr. E. H. Wilson and other authorities.

	10	100	1,000
2¼ in. pots. ....	\$2.00	\$18.00	\$150.00

**LIGUSTRUM ibolium.** *Ibolium Privet*

A cross between Ibota and California Privet, combining the hardiness and vigor of the former with the beauty of the latter.

	10	100	1,000
1½ to 2 ft. ....	\$0.90	\$ 6.00	\$50.00
2 to 2½ ft. ....	1.00	7.00	60.00
2½ to 3 ft. ....	1.10	8.00	75.00
3 to 4 ft. ....	1.20	10.00	90.00

**ibota regelianum** (Cuttings). *Regel Privet*

Very desirable for shrubbery or evergreen plantings. Makes splendid, low, dense hedges.

	10	100	1,000
1½ to 2 ft. ....	\$2.00	\$15.00	\$125.00
2 to 2½ ft. ....	2.50	20.00	175.00

**lucidum** *Glossy Privet*

Very attractive with rich, glossy leaves. Hardy in the North in sheltered positions.

	10	100
4 to 6 in. ....	\$2.00	\$15.00
10 to 12 in. ....	4.00	35.00

**ovalifolium.** *California Privet*

Thrives in all kinds of soil and situations. The ever-popular hedge plant.

	10	100	1,000
1½ to 2 ft. ....	\$0.50	\$3.00	\$25.00
2 to 2½ ft. ....	.60	4.00	35.00

The dot ● indicates improved varieties.

# WHOLESALE PRICE-LIST

SPRING, 1930

<b>ovalifolium variegatum</b> (Manda's).	<i>Golden Privet</i>		
Leaves variegated with pale yellow. A rather slow grower.	10	100	1,000
1 to 1½ ft. ....	\$3.00	\$25.00	\$200.00
1½ to 2 ft. ....	3.50	30.00	
<b>LONICERA japonica chinensis.</b>	<i>Purple Japan. Honeysuckle</i>		
Climbing to 15 feet. Flowers white changing to yellow, often purplish outside; very fragrant.	10	100	
2-year. ....	\$2.50	\$20.00	
3-year. ....	3.00	25.00	
<b>japonica aureo-reticulata.</b>	<i>Yellownet Japan. Honeysuckle</i>		
Flowers yellow. Foliage veined yellow.	10	100	
2-year. ....	\$2.00	\$15.00	
<b>morrowi.</b>	<i>Morrow Honeysuckle</i>		
One of the most attractive berried bushes grown. Fine for screens or backgrounds to other shrubs. Yellow flowers; brilliant, long-lasting scarlet berries.	10	100	
2½ to 3 ft. ....	\$2.00	\$16.00	
<b>tatarica alba.</b>	<i>White Tatarian Honeysuckle</i>		
A most adaptable shrub. White flowers followed by translucent berries.	10	100	
2½ to 3 ft. ....	\$2.00	\$16.00	
● <b>PHILADELPHUS argentine.</b>	<i>Silver-leaf Mock Orange</i>		
Flowers borne three to a cluster; leaves silvery.	10	100	1,000
2¼-in. pots. ....	\$2.00	\$15.00	\$135.00
<b>Avalanche.</b>	<i>Dwarf Mock Orange</i>		
Large, fragrant, white flowers on arching branches.	10	100	1,000
2¼ in. pots. ....	\$1.00	\$7.00	\$60.00
1½ to 2 ft. ....	2.50	18.00	150.00
3 to 4 ft. ....	3.00	25.00	200.00
● <b>Bicolor.</b>			
A Lemoine hybrid. Large flowers, of a perfect shape; petals pure white, with a purplish carmine blotch at their base.	10	100	
10 to 12 in. ....	\$4.00	\$35.00	
<b>Bouquet Blanc.</b>	<i>White Bouquet Mock Orange</i>		
Low, dense habit. Large white flowers, borne in immense quantities.	10	100	1,000
2¼-in. pots. ....	\$1.00	\$7.00	\$60.00
1 to 1½ ft. ....	2.00	18.00	
2 to 2½ ft. ....	2.50	22.00	
● <b>Brachybotrys.</b>			
"The best Philadelphus introduced from China," says Lemoine. Its tall branches are covered with large fragrant flowers which set it up as truly the finest of this new group.	10	100	1,000
2¼ in. pots. ....	\$2.00	\$15.00	\$135.00
2½ to 3 ft. ....	6.00	50.00	
3 to 4 ft. ....	7.00	60.00	
● <b>Enchantment.</b>	<i>Improved White Bouquet Mock Orange</i>		
Lemoine describes this variety as an improved <i>Bouquet Blanc</i> . It makes a most striking appearance with long erect branches furnished with thick panicles of double white flowers.	10	100	1,000
2¼-in. pots. ....	\$2.00	\$15.00	\$135.00
1 to 1½ ft. ....	4.00	35.00	
1½ to 2 ft. ....	6.00	50.00	
● <b>Glacier.</b>	<i>Glacier Mock Orange</i>		
Strong, erect grower; clusters of double white flowers set in panicles having the appearance of one enormous double flower.	10	100	1,000
2¼ in. pots. ....	\$2.00	\$15.00	\$135.00
1 to 1½ ft. ....	3.00	25.00	
1½ to 2 ft. ....	4.00	35.00	
2½ to 3 ft. ....	6.00	50.00	

# The CONARD-PYLE COMPANY

ROBERT PYLE, President

## (PHILADELPHUS) Manteau d'Hermine.

*White Mantle Mock Orange*

A dwarf variety with very small leaves.

	10	100
1 to 1½ ft. ....	\$2.50	\$20.00
1½ to 2 ft. ....	3.00	25.00

## ●Virginal.

*Virginal Mock Orange*

Here is the most beautiful variety of its class. It produces large double-crested flowers of pure white, deliciously fragrant. Blooms two and one half inches across and in May and early June completely cover the branches. Bloom all Summer.

	10	100	1,000
2¼ in. pots. ....	\$1.50	\$12.00	\$100.00
1 to 1½ ft. ....	2.50	20.00	180.00
1½ to 2 ft. ....	3.00	25.00	200.00
2 to 2½ ft. ....	4.00	35.00	

## PYRACANTHA coccinea lalandi.

*Laland Firethorn*

Pyracanthas are the only hardy, berried evergreen shrubs except American and English Holly. Flowers white; berries orange-scarlet, beautifully contrasted against the green glossy evergreen foliage, cut sprays a glorious house decoration but at their best right on the bush, which may be sheared into a perfect hedge shape.

	10	100
2-year B. & B. ....	\$8.00	\$75.00

## SPIRAEA, Anthony Waterer.

*Waterer Spirea*

The perpetually blooming Red Spirea. It makes nice shapely bushes 2 to 3 feet high and bears flat clusters of rich, rosy red flowers throughout the summer.

	10	100	1,000
2¼-in. pots. ....	\$1.00	\$7.00	\$60.00
1 to 1½ ft. ....	2.00	15.00	135.00
2 to 2½ ft. ....	3.50	30.00	

## “blue.”

*(Caryopteris incana)*

Compact bushes about 2 feet tall. Flowers sky-blue.

	10	100	1,000
2¼-in. pots. ....	\$1.00	\$7.00	\$60.00
18 in. ....	2.50	20.00	180.00

## prunifolia fl. pl.

*Bridal Wreath*

Handsome, dark green, shining foliage turning orange in autumn. White flowers in May.

	10	100	1,000
2¼-in. pots. ....	\$1.00	\$7.00	\$60.00
1 to 1½ ft. ....	2.00	15.00	135.00
2 to 2½ ft. ....	2.50	18.00	
2½ to 3 ft. ....	3.00	22.00	

## thunbergi.

*Thunberg Spirea*

Slender, arching branches, clothed with pure white flowers. Small, feathery, light-green leaves.

	10	100	1,000
2¼-in. pots. ....	\$1.00	\$7.00	\$60.00
1½ to 2 ft. ....	2.00	15.00	
2 to 2½ ft. ....	2.50	20.00	180.00

## vanhouttei.

*Van Houtte Spirea*

Most popular hardy Spirea. Pure snow-white flowers all over the plant.

	10	100	1,000
2¼-in. pots. ....	\$1.00	\$7.00	\$60.00
1½ to 2 ft. ....	1.20	10.00	80.00
2 to 2½ ft. ....	1.50	12.00	100.00
2½ to 3 ft. ....	2.00	16.00	140.00



# WHOLESALE PRICE-LIST

SPRING, 1930

**SYMPHORICARPOS racemosus.** *Common Snowberry*  
 Conspicuous white berries; attractive foliage. Succeeds well in shaded locations.

	10	100
1½ to 2 ft. ....	\$1.50	\$12.00

**SYRINGA persica rubra.** *Persian Red Lilac*  
 Purplish red flowers borne in great profusion all over the bush.

	10	100
2 to 2½ ft. ....	\$3.50	\$30.00

**VIBURNUM tomentosum plicatum.** *Japanese Snowball*  
 Fairly covered with great white balls of snow about Memorial Day. Heavy-ribbed, dark green foliage, peculiarly becoming. (See cut.)

	10	100	1,000
3-in. pots. ....	\$2.00	\$15.00	\$125.00
1½ to 2 ft. ....	3.50	30.00	250.00
2 to 2½ ft. ....	4.00	35.00	300.00
2½ to 3 ft. ....	5.00	40.00	350.00
3 to 4 ft. ....	7.00	60.00	500.00

**WEIGELA Eva Rathke.** *Red-flowered Weigela*  
 The Everblooming Weigela. Dark red flowers, marked white, and splendid foliage produce an effect not be had in any other shrub; flowers continuously.

	10	100	1,000
1 to 1½ ft. ....	\$2.00	\$15.00	\$120.00
1½ to 2 ft. ....	2.50	18.00	160.00
2½ to 3 ft. ....	3.00	25.00	200.00

**nana variegata.** *Variegated-leaf Weigela*  
 Dwarf, compact, grower. Soft pink flowers.

	10	100
1 to 1½ ft. ....	\$2.00	\$15.00
2½ to 3 ft. ....	2.50	22.00

**rosea.** *Pink Weigela*  
 Rose-pink flowers in great profusion. Vigorous grower.

	10	100
2 to 2½ ft. ....	\$1.75	\$12.00
3 to 4 ft. ....	2.50	20.00

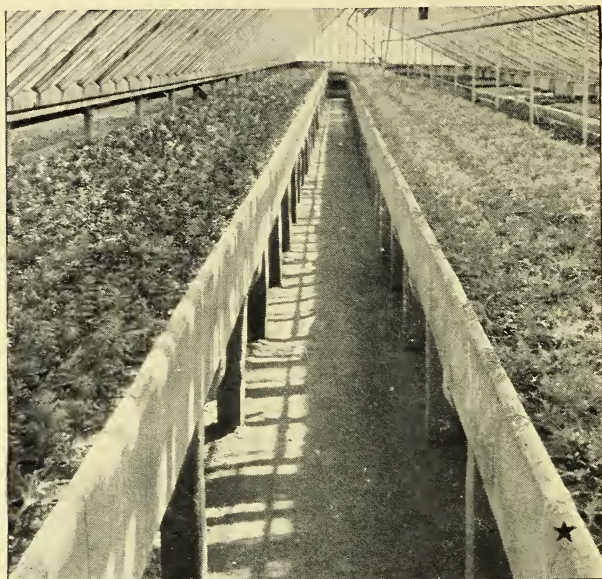
**WISTERIA frutescens magnifica.** *Yellow-eye Wisteria*  
 Lavender-blue flowers.

	10	100
2-year. ....	\$2.50	\$20.00
3-year. ....	3.00	25.00



Popular upright shrub *par excellence*: *Viburnum Plicatum*

# Lining-Out Evergreens



Neatly-grown and nicely-rooted—two factors which assure you solid satisfaction and unbroken rows

## OUR FAMOUS YEAR-OLDER WINTER-RESTED 2¼ IN. POT-GROWN PLANTS

Rooted indoors on concrete benches winter 1928 (see photo); grown in 2¼-in. pots from early Spring 1929; rested in outside beds since early Fall 1929.

250 of a kind at 1000 rate

	100	1,000
<b>JUNIPERUS ch. pfitzeriana</b> ( <i>Pfitzer Juniper</i> )	\$16.00	\$140.00
<i>comm. suecica</i> ( <i>Swedish J.</i> )	15.00	
<b>RETINOSPORA filifera</b> ( <i>Thread Retinospora</i> )	12.00	100.00
<i>obtusa</i> ( <i>Hinoki Cypress</i> )	16.00	150.00
<i>obtusa compacta</i> ( <i>Football Cypress</i> )	18.00	160.00
<i>obtusa gracilis</i> ( <i>Slender Hinoki Cypress</i> )	18.00	160.00
<i>plumosa</i> ( <i>Plume Ret.</i> )	10.00	90.00
<i>plumosa aurea</i> ( <i>Golden Plume Ret.</i> )	10.00	85.00
<i>pl. lutescens</i> ( <i>Dwarf Yellow Plume Cyp.</i> )	12.00	100.00
<b>TAXUS cuspidata</b> ( <i>Spreading Jap. Yew</i> )	20.00	180.00
<b>THUJA occ. compacta</b> ( <i>Parson's A.</i> )	15.00	
<i>occ. sibirica</i> ( <i>Siberian A.</i> )	10.00	90.00

## TWO YEAR TRANSPLANTS (2 Yr. T.)

2¼ in. pot-plants grown in the Nursery row since June 1928

<b>JUNIP. comm. hibernica</b> ( <i>Irish J.</i> ) 8-12 in.	35.00	300.00
<b>RETINOSPORA pisifera</b> ( <i>Saw. R.</i> ) 10-12 in.	25.00	200.00
<i>pisifera aurea</i> ( <i>Golden Saw. R.</i> ) 10-12 in.	25.00	200.00
<i>sq. veitchi</i> ( <i>Veitch Moss Cyp.</i> ) 8-10 in.	25.00	200.00
<b>THUJA occ. elegantissima</b> ( <i>Golden-tipped Arb.</i> ) 6-8 in.	25.00	200.00
<i>pumila</i> ( <i>Green Globe Arb.</i> ) 6-8 in.	25.00	200.00
<i>pyramidalis</i> ( <i>Am. Pyramidal Arb.</i> ) 8-12 in.	35.00	300.00
<i>vervaeneana</i> ( <i>Vervaene Arb.</i> ) 10-12 in.	25.00	200.00



# WHOLESALE PRICE-LIST

SPRING, 1930

## EVERGREENS



"Bicta" Aurea Nana, July 11, 1929. (See offer bottom page 22)

<b>BUXUS sempervirens.</b>	<i>Common Box</i>		
A faster and looser-growing form of dwarf boxwood. Useful for formal hedges.			
	10	100	1,000
10 to 12 in.....	\$3.50	\$30.00	\$250.00
1½ to 2 ft. (T) B. & B.....	15.00	125.00	1000.00
<b>JUNIPERUS chinensis.</b>	<i>Chinese Juniper</i>		
A very ornamental, pyramidal or columnar-shaped tree with pleasing grayish green foliage. Very hardy.			
	10	100	
8 to 10 in. B. & B.....	\$8.00	\$75.00	
12 to 18 in. grafts B. & B.....	15.00	125.00	
<b>ch. albovariegata.</b>	<i>Whiteleaf Chinese Juniper</i>		
Light bluish foliage with creamy branches interspersed. Formal pyramid but useful in low plantings.			
	10	100	
6 to 10 in. B. & B.....	\$10.00	\$75.00	
<b>chinensis pfitzeriana.</b>	<i>Pfitzer Juniper</i>		
Highly recommended, and perhaps the handsomest green Juniper. Medium to large grower, dense in center, spreading to pointed, feathery, graceful foliage.			
	10	100	1,000
2¼-in. pots.....	\$2.00	\$16.00	\$140.00
10 to 12 in. B. & B.....	6.00	50.00	
1 to 1½ ft. B. & B.....	12.50	100.00	
1½ to 2 ft. B. & B.....	20.00	150.00	
2 to 2½ ft. B. & B.....	27.50	225.00	
<b>communis canadensis</b>	<i>Prostrate Juniper</i>		
Branches spread almost along ground. A useful ground cover and rock plant.			
	10	100	
1½ to 2 ft. B. & B.....	\$17.50	\$150.00	
<b>communis hibernica.</b>	<i>Irish Juniper</i>		
A very narrow pyramid. Useful for its spire-like effect.			
	10	100	
8 to 12 in. B. & B.....	\$4.00	\$35.00	
12 to 15 in. B. & B.....	6.00	50.00	
<b>virginiana cannarti.</b>	<i>Cannart Redcedar</i>		
Very deep rich green foliage. Dense growing columnar form. Very hardy.			
	10	100	
1 to 1½ ft. B. & B.....	\$20.00	\$150.00	
<b>virginiana glauca.</b>	<i>Silver Red Cedar</i>		
Probably the best variety of Cedar. Bluish gray foliage. A favorite for specimen work.			
	10	100	1,000
1 to 1½ ft. grafts B. & B.....	\$15.00	\$125.00	\$1000.00

# The CONARD-PYLE COMPANY

ROBERT PYLE, President

## virginiana smithi

*Smith Redcedar*

Has light grass green foliage—unusual open habit, quite hardy and distinct.

	10	100	
10 to 12 in.....	\$10.00	\$75.00	

## RETINOSPORA filifera.

*Thread Retinospora*

An elegant, drooping form. The thread-like, pensile branchlets are very graceful and furnished with small, sharp-pointed, glossy green leaves.

	10	100	1,000
2¼-in. pots.....	\$1.50	\$12.00	\$100.00
8 to 12 in.....	3.00	25.00	200.00
1 to 1½ ft. B. & B.....	6.00	50.00	400.00

## obtusa.

*Hinoki Cypress*

Graceful tree; foliage bright, clear green. Grows slowly and has a marked Japanese appearance.

	10	100	1,000
2¼-in. pots.....	\$2.00	\$16.00	\$150.00
8 to 10 in. B. & B.....	6.00	50.00	
1 to 1½ ft. grafts B. & B.....	10.00	90.00	

## obtusa compacta

*Football Cypress*

Almost spherical in shape. Good green during winter—useful in foundation planting.

	10	100	1,000
2¼-in. pots.....	\$2.50	\$18.00	\$160.00
10 to 12 in. B. & B.....	6.00	50.00	
12 to 15 in. B. & B.....	8.00	75.00	

## obtusa gracilis.

*Slender Hinoki Cypress*

Beautiful, rare type of Retinospora, dense in habit; more erect and pyramidal in growth than the others.

	10	100	1,000
2¼-in. pots.....	\$2.50	\$18.00	\$160.00
8 to 12 in. grafts B. & B.....	11.00	100.00	
12 to 18 in. B. & B.....	8.00	75.00	

## pisifera.

*Sawara Retinospora*

Loosely pyramidal, with excellent feathery foliage. It is a hardy, graceful and rapid-growing evergreen.

	10	100	1,000
10 to 12 in.....	\$3.00	\$25.00	\$200.00

## pisifera aurea.

*Golden Sawara Retinospora*

Golden feathery foliage. One of the most exquisite

Retinosporas.	10	100	1,000
10 to 12 in.....	\$3.00	\$25.00	\$200.00
1 to 1½ ft. B. & B.....	5.00	45.00	
1 to 1½ ft. (Selected) B. & B....	6.00	50.00	350.00

## plumosa.

*Plume Retinospora*

Dwarf and dense-growing; branches slender and feathery.

	10	100	1,000
2¼-in. pots.....	\$1.50	\$10.00	\$ 90.00
1 to 1½ ft. B. & B. (See cut) ...	8.00	75.00	500.00
1½ to 2 ft. B. & B.....	11.00	100.00	



Real value in these *Retinospora plumosa*

# WHOLESALE PRICE-LIST

SPRING, 1930

**plumosa aurea.** *Golden Plume Retinospora*  
 A golden form of the preceding. It is one of the most popular evergreens, particularly liked for its rich yellow foliage, which shows up well among the more somber evergreens.

	10	100	1,000
2¼-in. pots.....	\$1.50	\$10.00	\$85.00
12 to 15 in. B. & B.....	8.00	75.00	600.00

**plumosa lutescens.** *Dwarf Yellow Plume Cypress*  
 Forms a low, broad, round-topped bush; bright yellow-tipped branchlets.

	10	100	1,000
2¼-in. pots.....	\$1.50	\$12.00	\$100.00
10 to 12 in. B. & B.....	8.00	75.00	

**squarrosa veitchi.** *Veitch Moss Cypress*  
 Silvery blue foliage, soft and graceful, gives woolly appearance. Broad, pyramidal outline in young plants.

	10	100	
12 to 16 in. B. & B.....	8.00	70.00	
1 to 1½ ft. B. & B.....	10.00	90.00	

**TAXUS cuspidata.** *Spreading Japanese Yew*  
 Extremely hardy. Spreading, bushy habit. Rich, deep green leaves. Valuable for foundation planting.

	10	100	1,000
2¼-in. pots.....	\$2.50	\$20.00	\$180.00

**cuspidata nana.** *Dwarf Japanese Yew*  
 Often called "cuspidata brevifolia." One of the richest and most handsome dwarf evergreens and typically Japanese in its beauty. The spreading branches are thickly clothed with short, dark green needles.

	10	100	
10 to 12 in. B. & B.....	\$15.00	\$125.00	

**THUJA occidentalis.** *American Arborvitae*  
 Splendid hedge plant of columnar, compact habit. Of merit for formal use.

	10	100	1,000
2 to 2½ ft. B. & B.....	\$10.00	\$85.00	\$600.00

**occidentalis compacta.** *Parsons Arborvitae*  
 Dwarf, dense grower, almost globe-shaped. Bright green foliage. Handsome.

	10	100	
2¼-in. pots.....	\$2.00	\$15.00	
10 to 12 in. B. & B.....	6.00	50.00	
1 to 1½ ft. B. & B.....	8.00	75.00	

**occidentalis elegantissima.** *Golden-tipped Arborvitae*  
 Rich, lustrous green foliage; branches tipped with yellow.

	10	100	1,000
6 to 8 in.....	\$3.00	\$25.00	\$200.00
10 to 12 in. B. & B.....	6.00	50.00	
12 to 15 in. grafts B. & B.....	12.50	100.00	800.00



*Thuja and "Biota" Elegantissima, grafts. July 11, 1929.*



# The CONARD-PYLE COMPANY

ROBERT PYLE, President

**(THUJA) occidentalis globosa.** *American Globe Arborvitae*  
Naturally globe-shaped. Useful for formal work.

	10	100
4 to 6 in.....	\$3.00	\$25.00

**occidentalis lutea.** *George Peabody Arborvitae*

	10	100
10 to 12 in. B. & B.....	\$8.00	\$75.00

**occidentalis pumila.** *Green Globe Arborvitae*

Dwarf; globe-shaped.

	10	100
6 to 8 in.....	\$3.00	\$25.00
1 to 1½ ft. B. & B.....	12.50	100.00

**occidentalis pyramidalis.** *American Pyramidal Arborvitae*

A choice narrow, columnar tree that grows from 20 to 30 feet high. Stays bright green in winter. Excellent for accents and formal planting.

	10	100	1,000
2¼-in. pots.....	\$1.50	\$10.00	\$90.00
8 to 12 in.....	4.00	35.00	300.00
1½ to 2 ft. grafts B. & B.....	12.50	100.00	800.00
1½ to 2 ft. B. & B.....	12.50	100.00	

**occidentalis rosenthali.** *Rosenthal Arborvitae*

Columnar form with dark green lustrous foliage.

	10	100	1,000
1 to 1½ ft. grafts B. & B.....	\$15.00	\$125.00	\$1000.00

**occidentalis sibirica.** *Siberian Arborvitae*

Compact, pyramidal habit; constant in color; fine for hedges and screens.

	10	100
8 to 10 in. B. & B.....	\$4.00	\$35.00
10 to 12 in. B. & B.....	6.00	50.00
1 to 1½ ft. B. & B.....	10.00	90.00

**occidentalis spiralis.** *Spiral Arborvitae*

One of the most distinct and rare Arborvitae. Its dark green foliage grows in spiral tiers. Hardy and very attractive.

	10	100	1,000
1 to 1½ ft. grafts B. & B.....	\$12.50	\$115.00	\$900.00

**occidentalis vervaeneana.** *Vervaene Arborvitae*

Graceful, bronze, mottled tree for many uses.

	10	100
10 to 12 in.....	\$3.00	\$25.00
1 to 1½ ft. B. & B.....	9.00	75.00
1½ to 2 ft. B. & B.....	12.50	100.00

**occ. vervaeneana variegata.** *Variegated Vervaene Arb.*

	10	100
8 to 10 in.....	\$3.00	\$25.00

**(Biota) orientalis.** *Oriental Arborvitae*

Tall and slender. Rich dark green. Fine for formal effects.

	10	100
1½ to 2 ft. B. & B.....	\$10.00	\$75.00

**(Biota) orientalis aurea conspicua.** *Gold-spire Arborvitae*

Has a conspicuous golden color in summer and is peculiarly shaded in winter. Pyramidal shape.

	10	100
8 to 12 in. B. & B.....	\$11.00	\$100.00
1 to 1½ ft. B. & B.....	15.00	125.00

**(Biota) orientalis aurea nana.** *Berckman's Golden Arb.*

Very pretty dwarf form with yellow-tinged foliage, changing to bronze. (See cut P. 19).

	10	100	1,000
12 to 15 in. grafts B. & B....	\$12.50	\$100.00	\$850.00

**(Biota) orientalis elegantissima.** *Yellow Column Arb.*

Compact and columnar. Assumes a rich, deep golden bronze color in winter. Handsome. (See cut P. 21).

	10	100	1,000
16 to 18 in. grafts B. & B.....	\$12.50	\$115.00	\$950.00

**TSUGA canadensis.** *Canada Hemlock*

Most graceful and adaptable, the spreading horizontal branches making effective shadow effects. Useful for hedges and informal planting.

	10	100
1 to 1½ ft. B. & B.....	\$11.50	\$100.00
2½ to 3 ft. B. & B.....	35.00	300.00

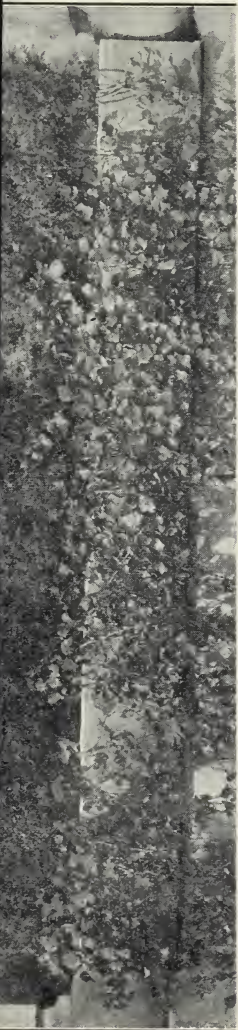
LE PRICE-LIST



*sandra*  
l mats  
at will  
1,000  
\$85.00

\$7.00

.\$3.50)  
i.50).  
(1 yr.



**ons**

the  
ing,

present  
subject  
l goods  
tra at  
ffered

y shall  
l, error  
ontrol.

bsence  
warded  
espons-

ceipt of

it, who  
nvoice.

**name**  
omptly;  
vent of  
alue at

**ection**

ed, but  
usiness  
y those

ie most  
oy The  
clature.

Eastern  
ymen's

*Grafted plants of Thuja orientalis*



ice-Pres.  
nt Secy.

WEST GROVE, PA.





October 12, 1929

**Columbus Discovered America  
on October 12, 1492**



Grafted plants of *Thuja orientalis aurea nana*, July 11, 1929



*Buxus sempervirens*, 1 1/2 to 2 ft. (T)

**DISCOVER  
EXTRA SALES**



**EVERGREENS for WINDOW BOXES and URNS**

**Fill Summer-Boxes for Winter**

Many of your customers have containers which they have used for Summer-flowering plants, and as cold weather approaches, they can be easily induced to have these same articles filled with cheering evergreen material.

**Re-Use Evergreens Upon the  
Lawn Next Spring**

Tell your trade that evergreens, if properly watered and mulched with peat, can be set upon the lawn next Spring and the boxes reused for Summer flowers. This idea will cause your sales to go over big and bring you new trade.

**Display Samples**

Show in your windows, or at your entrance, a few boxes filled with freshly-dug plants of the carefully-chosen varieties offered here. Order now.

Prices for the trade only and f.o.b. West Grove, Pa.; packing free for cash

<b>BUXUS sempervirens. Common Box.</b>	100	1000
10 to 12 in.....	\$30.00	\$250.00
1 1/2 to 2 ft. (T) B&B (See cut).....	125.00	1000.00
<b>JUNIPERUS com. hibernica. Irish J.</b>		
8 to 12 in., B&B.....	35.00	.....
12 to 15 in., B&B.....	50.00	.....
<b>RETINOSPORA plumosa. Plume Ret.</b>		
10 to 12 in.....	25.00	200.00
1 to 1 1/2 ft., B&B.....	75.00	.....
<b>plumosa aurea. Golden Plume Ret.</b>		
12 to 15 in., B&B.....	75.00	600.00
<b>THUJA occ. pyramidalis. Am-Pyr-Arb.</b>		
1 to 1 1/2 ft., B&B.....	75.00	.....
<b>(Biota) or. aurea nana. Berckman's Golden</b>		
12 to 15 in., grafts, B&B (See cut)....	100.00	850.00
<b>TSUGA canadensis. Canada Hemlock.</b>		
1 to 1 1/2 ft., B&B.....	100.00	.....
<b>HEDERA helix. English Ivy</b>		
2 1/4-in. pots.....	6.00	50.00
<b>EUONYMUS japonicus. Ev. Burningbush</b>		
<i>Shapely upright grower.</i>		
10 to 12 in.....	15.00	.....
1 to 1 1/2 ft.....	18.00	.....

**THE CONARD-PYLE CO., West Grove, Pa.**

ROBERT PYLE, President

(over)

Established Nurserymen Since 1897



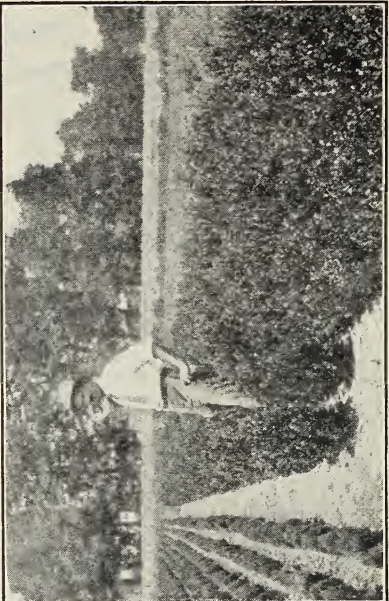
(THU

4  
 occi  
 10  
 occi  
 6  
 1  
 occi  
 30  
 fo  
 2 1/2  
 8 1/2  
 1 1/2  
 1 1/2  
 occi  
 1 t  
 occi  
 he  
 8 t  
 10  
 1 t  
 occi  
 (C  
 gre  
 att  
 1 t  
 occid  
 (C  
 10  
 1 t  
 1 1/2  
 occ. v  
 8 t  
 (Biot  
 T  
 effe  
 1 1/2  
 (Biot  
 H  
 pect  
 8 t  
 1 t  
 (Biot  
 V  
 char  
 12 t  
 (Biot  
 C  
 bror  
 16 t  
 TSUGA  
 M  
 bran  
 hedg  
 1 t  
 2 1/2

File with 1930 catalog

1929

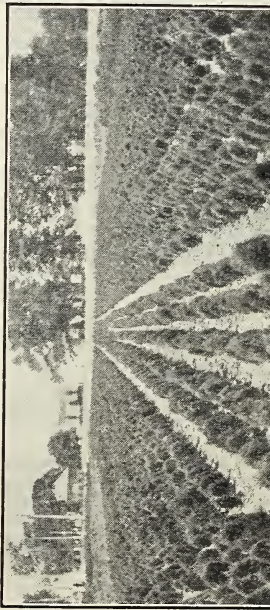
6273



Buxus sempervirens, 1 1/2 to 2 ft. (T)

October 12, 1929

**Columbus Discovered America  
 on October 12, 1492**



# WHOLESALE PRICE-LIST

SPRING, 1930

## Hardy Perennials

<b>PACHYSANDRA terminalis.</b>	<i>Japanese Pachysandra</i>
A trailing plant 6 to 8 inches high, forming broad mats of bright glossy green foliage. A ground cover that will grow in all sorts of shady situations.	
2¼-in. pots.....	100 1,000 \$10.00 \$85.00

Except where otherwise marked, 2¼-inch pots. \$7.00 per 100.

<b>Aquilegia.</b> Pink and rose.	<b>Feverfew</b>
<b>Campanula Medium.</b> Mxd.	<b>Iris, Dr. Bernice</b> (Div. \$3.50)
<b>Delphinium Belladonna.</b>	<b>Iris Loreley.</b> (Div. \$3.50).
<b>Delphinium Bellamosum</b>	<b>Platycodon.</b> (Blue) (1 yr. fld., \$10).
<b>Digitalis purp. glox.</b>	<b>Veronica spicata.</b>

## Business Terms and Conditions

This list cancels all previous quotations, and the terms and conditions shown will carry for Spring, 1930, in all offers to the trade.

The prices printed in this list are based upon present market conditions, and are for immediate acceptance, subject to change without notice and stock being unsold. All goods are offered f. o. b. West Grove, Penna.; **packing extra** at cost or **free for cash with order.** **250 of a kind are offered at the 1,000 rate and 25 of a kind at the 100 rate.**

**Orders are booked** with the understanding that they shall become void should injury befall the stock from flood, error in count, drought, fire, or other causes beyond our control.

**Shipments** travel at purchaser's risk and in the absence of definite instructions from the buyer, stock will be forwarded according to our best judgment without assuming responsibility.

**Claims,** if any, must be made immediately on receipt of goods.

**Terms** cash, except to those with established credit, who may have the benefit of 60 days net from date of invoice.

**Every effort is made to keep varieties true to name** and, on proper proof, any not true will be replaced promptly; but the success of the grower is not guaranteed. In event of untrue stock, our liability must be limited to invoice value at time of shipment.

**Copy of Pennsylvania State Certificate of Inspection on all orders.**

**Correspondence** from prospective buyers is invited, but all communications should be written on printed business stationery so that trade prices can be granted to only those individuals or firms actually entitled to receive them.

**The plant names used** in this list conform, for the most part, with "Standardized Plant Names," adopted by The American Joint Committee on Horticultural Nomenclature.

**Member** American Association of Nurserymen, Eastern Nurserymen's Association, Pennsylvania Nurserymen's Association, etc.

## THE CONARD-PYLE COMPANY

ROBERT PYLE, President      R. T. SATTERTHWAIT, Vice-Pres.  
E. P. GROFF, Secretary-Treas.      PAUL H. GRAVES, Assistant Secy.  
WEST GROVE, PA.



# There's cash in LANDSCAPING AS A SIDE-LINE



## Make Sales Easily with Proper Display

You can easily build up and greatly increase your sales by having on your grounds a well-arranged display of Evergreens and Shrubbery.

### Begin with Small Plantings

Start this Fall with little jobs requiring only a few plants, and gradually make your way into the larger plantings.

## Buy at Start, but Plan to Grow Own Supply

At first buy your plants; then as your trade becomes established get an acre or so of land in the outskirts of your town and grow some of your stock.

### Order Here

Buy your requirements direct from this page, or send for complete Wholesale Price List with full descriptions and photographs.

## LARGE SHRUBS

	100
BERBERIS thunbergi. Japanese Barberry. 2 to 2½ ft. ....	\$18.00
BUDDLEIA davidi magnifica. Oxeye Butterflybush. 1½ to 2 ft. ....	15.00
DEUTZIA gracilis. Slender Deutzia. 12 to 15 in. ....	15.00
FORSYTHIA int. spectabilis. Showy Border Forsythia. 3 to 3½ ft. ....	25.00
HIBISCUS, Wm. R. Smith. Shrub-althaea 2 to 2½ ft. ....	35.00
HYDRANGEA arb. grandiflora. Snowhill Hydrangea. 2½ to 3 ft. ....	25.00
paniculata grandiflora. Peegee Hydrangea. 1 to 1½ ft. ....	15.00
LIGUSTRUM ibolium. Ibolium Privet. 2 to 2½ ft. ....	7.00
ovalifolium. California Privet. 2½ to 3 ft. ....	5.00
PHILADELPHUS Virginal. Virginal Mockorange. 2 to 2½ ft. ....	35.00
SPIRAEA Anthony Waterer. Waterer Spirea. 1 to 1½ ft. ....	15.00
vanhouttei. Vanhoutte Spirea. 2½ to 3 ft. ....	16.00
VIBURNUM tom. plicatum. Japanese Snowball. 2½ to 3 ft. ....	40.00
WEIGELA Eva Rathke. Red-flowered Weigela. 2½ to 3 ft. ....	25.00

## EVERGREENS

### OF THE RIGHT SIZE

	100
BUXUS sempervirens. Common Box. 10 to 12 in. ....	\$30.00
JUNIPERUS chinensis pfitzeriana. Pfitzer Juniper. 1½ to 2 ft., B&B. ....	150.00
communis hibernica. Irish Juniper. 10 to 12 in., B&B. ....	50.00
RETINOSPORA filifera. Thread Retinospora. 1 to 1½ ft., B&B. ....	50.00
obtusa gracilis. Slender Hinoki Cypress. 1 to 1½ ft., B&B. ....	75.00
pisifera. Sawara Retinospora. 1 to 1½ ft., B&B. ....	45.00
pisifera aurea. Golden Sawara Retinospora. 1 to 1½ ft. (Selected), B&B. ....	50.00
plumosa. Plume Retinospora. 1 to 1½ ft., B&B. ....	75.00
plumosa aurea. Golden Plume Retinospora. 12 to 15 in., B&B. ....	75.00
squarrosa veitchi. Veitch Moss Cypress. 1 to 1½ ft., B&B. ....	90.00
THUJA occ. elegantissima. Golden-tipped Arborvitae. 12 to 15 in., B&B. ....	75.00
occ. pyramidalis. American Pyramidal Arborvitae. 1½ to 2 ft., B&B. ....	100.00
occ. vervaeneana. Vervaene Arborvitae. 1 to 1½ ft., B&B. ....	75.00
(Biota) or. aurea nana. Berckman's Golden Arborvitae 12 to 15 in., grafts, B&B. ....	100.00
TSUGA canadensis. Canada Hemlock. 1 to 1½ ft., B&B. ....	100.00

## HUGONIS FOR HEDGES

Sprightly Specimens and Bang-up Borders

"Golden Rose of China." 2 year, field plants (O. R.)  
100 rate Lots 250 up  
2 to 3 ft. .... 40c. ea. 35c. ea.

## FOR GREEN EFFECT IN SHADY PLACES

Pachysandra terminalis (Japanese Spurge)

Forms broad mats of glossy green. 100 1000  
2¼-in. pots. .... \$10.00 \$85.00

Prices f.o.b. West Grove, Pa.; packing free for cash

## LINING-OUT STOCK

For EVERGREENS and SHRUBS to grow on, see complete Wholesale Price List. Extra copies ready to mail immediately

# THE CONARD-PYLE CO., West Grove, Pa.

ROBERT PYLE, President

(over)

Established Nurserymen Since 1897



# WHOLESALE PRICE-LIST

— SPRING, 1930 —

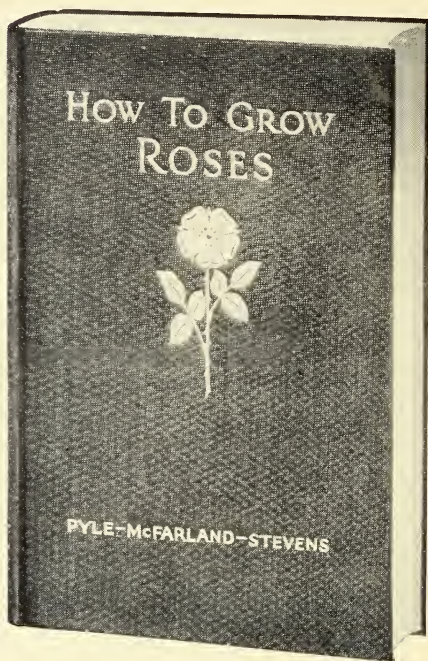
Customers eager to buy entertaining information—  
You in need of premiums to draw trade—  
Your book-list requiring revision—

**MEET THESE DEMANDS NOW**

with

**NEW 17th EDITION**

**“HOW TO GROW ROSES”**



Make sales, through your catalog or locally; Note these talking points which publishers declare mark this book as outstanding in its field:

1. Practical information. A "How to" Book. Three famous rosarians—Robert Pyle, Dr. J. Horace McFarland and G. A. Stevens (assistant to Dr. McFarland)—have pooled their knowledge and experience in writing the book. Every step in rose-growing is made so clear that any beginner can succeed.
2. Four-color illustrations.  
32 pages of them, showing 45 varieties in natural colors.
3. Low Price. A three-dollar book for \$2.00! Every rose lover will buy it.

Price \$2 per copy postpaid. Order and figure your requirements. Generous discount on quantities.

**THE CONARD-PYLE COMPANY**

ROBERT PYLE, *President*

WEST GROVE, PA.

*Nurserymen since 1897*





