

Historic, archived document

Do not assume content reflects current scientific knowledge, policies, or practices.

FAMOUS SPRING BARGAINS

FERRIS



**FERRIS
"SUN-RAY"
PHLOX
BORDER**

- 4 B. Comte — Rich purplish red.
- 4 Dr. Chas. Mayo—Choice white, red eye.
- 4 Thor—Brilliant salmon pink.

These 12 Superb Phlox—Thrifty, field-grown, blooming size plants—

OUR BARGAIN PRICE—

**EARL FERRIS NURSERY
HAMPTON, IOWA**

\$ 1.29
Postpaid

PLANT EXPLORATION
AND INTRODUCTION
Rec'd MAR 28 1936 ★
Answered _____

SEC. 562, P. L. & R.
U. S. POSTAGE
PAID
HAMPTON, IOWA
Permit No. 1

RECEIVED
U. S. Department of Agriculture.

Division of Plant Explor.,
Bureau of Plant Industry
Dept. of Agriculture
Washington D.C.



Dianthus
Crinkled, colorful, fragrant.
5 for 40¢, Postpaid



Chinese Lantern
Artistic, orange "lanterns."
5 for 40¢, Postpaid



Platycodon
The popular Balloon Flower.
5 for 40¢, Postpaid



Shasta Daisy
Glistening, white.
5 for 40¢, Postpaid



Gaillardia
Abundant blooms, crimson and gold.
5 for 40¢, Postpaid

FERRIS' PERENNIAL BARGAIN "A"—10 Favorite Perennials—
2 each of the five choice varieties shown above—all select, hardy, blooming size plants—Our Bargain Price—69¢, Postpaid

Gypsophila
The dainty Baby's Breath.
5 for 65¢, Postpaid

Pyrethrum, Mixed
Pink, rose and white Painted Daisies.
5 for 65¢, Postpaid

Coreopsis
Beautiful rich yellow flowers.
5 for 65¢, Postpaid

Hibiscus
Tall, showy flowers richly colored.
5 for 65¢, Postpaid

Viola, Mixed
A mass of pansy-like blooms all season.
5 for 65¢, Postpaid

FERRIS' PERENNIAL BARGAIN "B"—10 Beautiful Perennials—
2 each of the five selected varieties shown below—all thrifty, well-rooted, blooming size plants—Our Bargain Price—\$1.05 Postpaid



FERRIS' GRAND-HARDY PERENNIALS

Wonderful Sale Collections!

Guaranteed to Bloom This Year

Strong, Well-Rooted, Field-Grown Plants

FERRIS' PERENNIAL BARGAIN "C"
46 GLORIOUS PERENNIALS

2 each of all 23 varieties illustrated on this page—Choice, blooming size plants.

OUR BARGAIN PRICE **\$3.79**
POSTPAID

FERRIS' PERENNIAL BARGAIN "D"
115 LEADING PERENNIALS

5 each of all 23 varieties illustrated on this page—Choice, blooming size plants.

\$8.59
POSTPAID

Bellamosa, Belladonna Delphiniums
Tall, queenly flowers of exquisite blue. 5 for 65¢, Postpaid

Perennial Sweet Pea
Lovely red and pink flowers all Summer.
5 for 40¢, Postpaid



Anthemis
The Golden Marguerite.
5 for 40¢, Postpaid



Double Aquilegia
Beautiful Double Columbine, mixed colors.
5 for 65¢, Postpaid



Lychnis
Handsome, brick-red blooms.
5 for 65¢, Postpaid



Alaska Daisy
Giant flowers, snow-white.
5 for 40¢, Postpaid



Stokesia
Charming aster-like blooms, blue or white.
5 for 65¢, Postpaid

FERRIS' PERENNIAL BARGAIN "E"—10 Charming Perennials—
2 each of the five popular varieties shown above—all thrifty, well-rooted, blooming size plants—Our Bargain Price—89¢, Postpaid

FERRIS' PERENNIAL BARGAIN "F"—10 Favorite Dwarf Perennials—

2 each of the five varieties shown below—ideal for rock garden, edging or low border—choice blooming size plants—Our Bargain Price—98¢

Lily-of-the-Valley
Miniature bells of sweetest fragrance.
5 for 65¢, Postpaid

Phlox Subulata
Creeping plant, a mass of bloom in early Spring.
5 for 65¢, Postpaid

Statice
Feathery sprays of lavender-blue.
5 for 65¢, Postpaid

Linum Perenne
A shower of light blue flowers all season.
5 for 65¢, Postpaid

Dwarf Sedum
Favorite rock garden plant; evergreen foliage.
5 for 40¢, Postpaid



FREE GIFTS

FROM FERRIS

With Early Orders

What we can give you is the very best service, and if you mail your order within 15 days after you receive this booklet, you may take advantage of these fine **FREE GIFTS**. Be sure to select your gift you choose on your order; they cannot be added later or shipped separately.

With an Order Amounting to \$2.50 or More.

Your choice, either one of the following:
 1. **BRILLIANT PHLOX**, 1-yr. (Consisting of 1 Dr. W. Van der Meer, 1 Mrs. Jenkins, 1 R. P. Struthers and Thor.)
 2. **HANDSOME PERENNIALS**, (Consisting of 4 each: Platycodon, Pyrethrum, Gallardia, Delphinium, Aquilegia and Shasta Daisy.)

With an Order Amounting to \$5.00 or More.

Your choice, either one of the following:
 1. **BRILLIANT PHLOX**, (Consisting of 3 each: Delphinium, Aquilegia, Chinese Lantern, Delphinium and Shasta Daisy.)
 2. **EXTRA-SELECT FLOWER GARDEN ASSORTMENT**, (Consisting of 1 Delachel Peony, 1 Edulis Superba Peony, 1 Mme. Emile Galle Peony, 4 New Philippine Lily, 4 Perfection Iris, 4 Madame Chereau Iris, 4 Sambucus Beethoven Iris, and 6 Yucca.)

With an Order Amounting to \$10.00 or More.

Your choice, either one of the following:
 1. **BRILLIANT PHLOX**, (Consisting of 3 each: B. Comte, Mrs. Jenkins, R. P. Struthers and Thor.)
 2. **HANDSOME PERENNIALS**, (Consisting of 4 each: Platycodon, Pyrethrum, Gallardia, Delphinium, Aquilegia and Shasta Daisy.)

With an Order Amounting to \$25.00 or More.

Your choice, either one of the following:
 1. **SUPERB EVERBLOOMING ROSES**, 2-yr., field-grown. (Consisting of 1 each: Red Radiance, Pink Radiance, Hoover, Frau Karl Druschki, Red Rugosa, Pink Rugosa, White Rugosa.)
 2. **EXTRA-SELECT FLOWER GARDEN ASSORTMENT**, (Consisting of 1 Delachel Peony, 1 Edulis Superba Peony, 1 Mme. Emile Galle Peony, 4 New Philippine Lily, 4 Perfection Iris, 4 Madame Chereau Iris, 4 Sambucus Beethoven Iris, and 6 Yucca.)



AMOOR RIVER PRIVET HEDGE

Ferris' Popular HEDGES

AT EXTRA LOW PRICES! Use Our Choice Plants for Beautiful Living Fences.

Japanese Barberry

Beautiful, rounded, compact plants form a handsome hedge, bright green in Summer turning to brilliant scarlet in the Fall, with a wealth of crimson berries in Fall and Winter. Innumerable sharp thorns give complete protection. Grows rapidly, hardy and popular everywhere; guaranteed rust-free. Plant 18 inches apart in the hedge row.

	POSTPAID		
	25	50	100
1-yr., 9-12 in., strong, well rooted	\$1.00	\$1.50	\$2.25
16-22 in., select	\$3.25	\$5.00	\$9.00

Amoor River North Privet

For the formal, trimmed hedge, there is nothing so fine as the Amoor River Privet, this being the hardiest and best of all Privets. Thick, light green foliage lasts until late Fall. Set 1 ft. apart, planting deeply.

	POSTPAID		
	25	50	100
1 ft. average	\$1.55	\$2.20	\$3.95
12-18 in. transplants	\$2.25	\$3.35	\$5.85

Spirea Van Houttei

Trimmed or untrimmed, the popular Bridal Wreath makes a most beautiful hedge, and flourishes almost anywhere. Plant 18 or 24 inches apart in the hedge row.

	POSTPAID		
	25	50	100
1 ft. average	\$1.60	\$2.40	\$4.25

Tartarian Honeysuckle

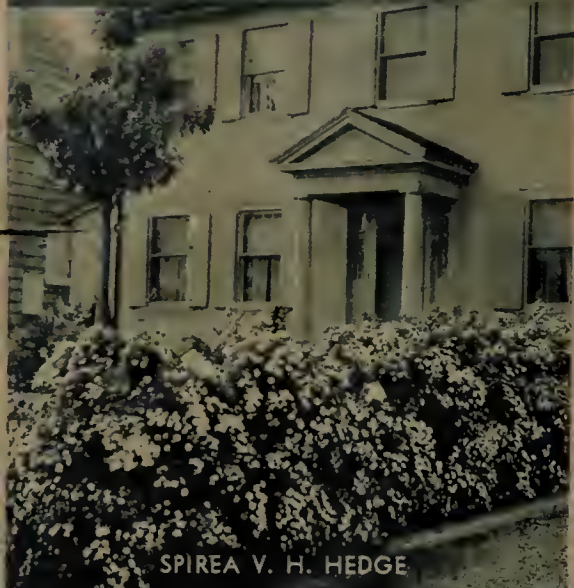
The finest of all shrubs for the tall screen. A rapid grower, with thick foliage, small artistic flowers, and bright colored berries. Wonderfully hardy. Plant 2 ft. apart in the hedge.

	POSTPAID		
	25	50	100
1 ft. average	\$2.15	\$3.95	\$7.20

Caragana—Siberian Pea Tree

Wonderfully hardy hedge or screen for the West and North where hot winds and drought often prevail. Thick, twiggy branches; fine, light green foliage; bright yellow blossoms in the Spring.

	POSTPAID		
	25	50	100
12-18 in. hedging	\$0.90	\$1.50	\$2.50



SPIREA V. H. HEDGE

EXTRAORDINARY BARGAINS IN FERRIS' SELECTED SHADE TREES

If there are other Trees or Hedge Plants you prefer, or you need other sizes than listed here, write for our large catalog.

Chinese Elm (Siberian Strain)

Beautiful and graceful, supremely hardy, rapid growing—no wonder this has become the most popular tree of the present time. Ideal for street and lawn planting, for parks and cemeteries. Also, on account of its quick growth and thick, compact nature, it is splendid for windbreak and hedge planting.

	POSTPAID		
	25	100	250
(For windbreaks and hedges):			
12-18 in. select seedlings	\$1.06	\$2.65	\$5.90
18-24 in. select seedlings	1.58	4.65	10.30
2-3 ft. seedlings, heavy grade	3.10	10.20	21.35
3-4 ft. seedlings, heavy grade	4.75	15.30	30.50
(By Express)			
Each	2	5	
4-5 ft. transplanted	\$0.30	\$0.50	\$1.10
5-6 ft. transplanted, select	.65	1.20	2.50

Norway Maple

Finest and most rapid growing of the Hard Maples. Round shapely top; handsome, dark green foliage that turns to scarlet and yellow in the Fall. A grand street or lawn tree, and hardy in all sections.

6½-7½ ft., transplanted,	2 for \$1.80; 4 for \$3.15 (by express)
8-10 ft., select specimens,	2 for \$3.20; 4 for \$5.00 (by express)

Schwedler's Maple

Their brilliant purplish-red leaves in the Spring make a rich contrast with the vivid greens of surrounding nature, later changing to deep, waxy green. 7-8 ft., heavy, well branched, 2 for \$3.75; 4 for \$6.80 (by express)

Lombardy Poplar

Tall, slim, formal—the most striking tree on the landscape. Splendid for screens and backgrounds. 4 ft. average 4 for \$1.00, Postpaid 6-8 ft., heavy, select 4 for \$2.30 (by express)

American Elm

America's grandest tree, developing an immense, spreading head, with handsome, bright green foliage. Hardy everywhere.

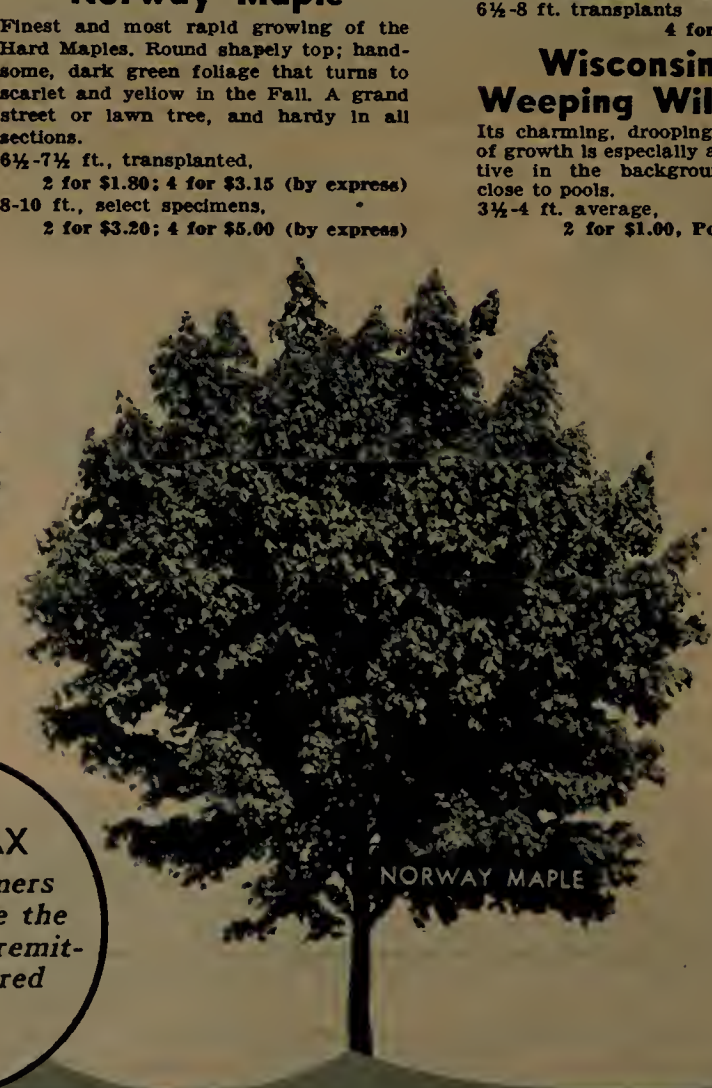
(By Express)	
5-6 ft. transplants	4 for \$1.25
6½-8 ft. transplants	4 for \$1.65

Wisconsin Weeping Willow

Its charming, drooping habit of growth is especially attractive in the background or close to pools. 3½-4 ft. average, 2 for \$1.00, Postpaid



CHINESE ELM



NORWAY MAPLE



LOMBARDY POPLAR

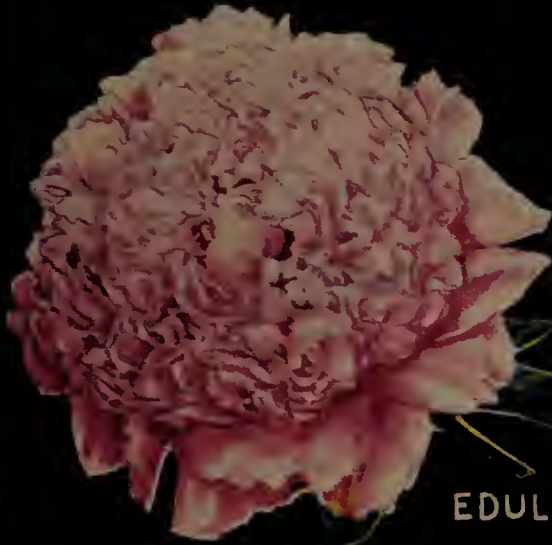
Terms CASH WITH ORDER
 All stock sold under the same liberal GUARANTEE as given in our large catalog.

SALES TAX
 Iowa customers please include the 2% in your remittance required by law.

25c PACKING CHARGE ON ANY ORDER UNDER \$1.00. No charge for packing where the amount is \$1.00 or more.

SUPER SALE

PEONIES-PHLOX LILIES- IRIS- ETC.

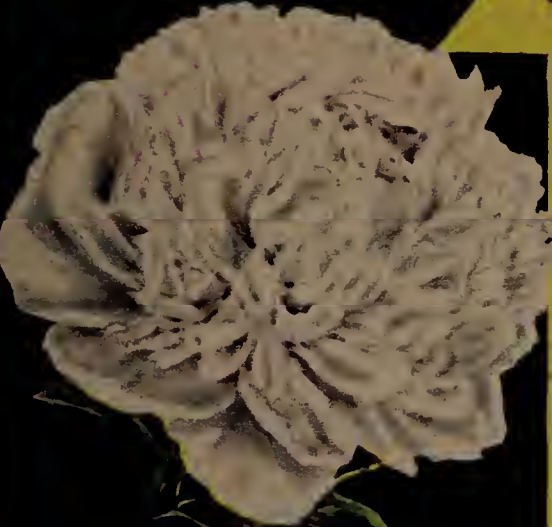


EDULIS SUPERBA

"MOTHER'S DAY"
RIGHT COLLECTION
LILIES-IRIS-
ETC.



La SUBLIME



AURORA



CHAS McKELLIP



COMUS

IRIS BORDER COL- LECTION No. 3

Most beautiful of the "red" Iris; violet-rose has a rich crimson of May. Charming mauve-pink.
Tall white suffused light blue.
Wright. Rich golden yellow throughout.
Delicate blue, fall rich violet-black.

25 Superb Iris—Favorites with Garden Clubs and lower Spec. lists. (Regular catalog price, \$2.67)

OUR SALE PRICE—
\$2.22 Postpaid



SEMINOLE



PURPLE QUEEN



QUEEN OF MAY



PHILIPPINE



SCARLET RUSSIAN



REGAL

Our "SPRING-BEAUTY" PEONY Collection

6 GRAND PEONIES

- 1 Louis Van Houtte. Favorite red.
- 1 Mme. Emile Galle. Lovely flesh pink.
- 1 Alexander Dumas. Light violet-rose.
- 1 Old Silver Tip. Bright red, silver tipped.
- 1 Moses Hull. Handsome pink.
- 1 Queen Victoria. Popular white. (Well worth \$2.50)

These 6 Beautiful, Double-Flowering, Fragrant Peonies

FOR ONLY—\$1.25 Postpaid

"MOTHER'S DAY" PEONY OFFER

3 SUPER PEONIES

- 1 Chas. McKellip. Gorgeous blooms of rich crimson, even finer than Karl Rosenfield.
- 1 Lueta Pfeiffer. Beautiful blend of pink and white, with carmine blotches. A prize winner.
- 1 Tourangelle. Pearly white overlaid with delicate pastel shades. (These often sell for \$4.00)

These 3 High Rating Peonies, Favorites with all Garden Lovers,

FOR ONLY—\$1.63 Postpaid

IRIS BORDER COLLECTION No. 1

- 10 Comte de St. Clair. White, rich violet falls.
- 10 Khedive. Lovely soft lavender.
- 10 Madame Chereau. White with blue frill.
- 10 Purple Queen. Large rich purple.
- 10 Sambucus Beethoven. Rose-Lilac with purple falls.

These 50. Lovely Iris—fine blending of colors, and an ideal assortment for the border or garden.

OUR SALE PRICE—\$1.50 Postpaid

"MOTHER'S DAY" PHLOX COLLECTION

- 3 Apollo. Tall, handsome, deep rose-red.
- 3 Innocence. Lovely clear white.
- 3 B. Comte. Rich, satiny purplish-red.
- 3 R. P. Struthers. Favorite cherry-red suffused salmon.
- 3 Orchid Rose. Exquisite light rose flushed lavender. A brand new Phlox of wonderful color.

These 15 Brilliant Ferris' Phlox—making a grand display in the garden throughout the Summer (regular catalog price \$2.87).

OUR BARGAIN PRICE—\$2.33 Postpaid

"MOTHER'S DAY" GLADIOLUS COLLECTION

- 5 Picardy. Finest of all Glads. Large, handsome apricot-pink.
- 5 Charles Dickens. Royal violet-purple.
- 5 Dr. F. E. Bennett. Tall, immense, brilliant scarlet.
- 5 Golden Dream. Superb golden yellow.
- 5 Annie Laurie. Beautiful light pink, ruffled.
- 5 Nancy Hanks. Large, bright orange blossoms.
- 5 Marmora. Silvery lavender with petunla blotch.

These 35 MASTERPIECE GLADIOLI—all in the Sweepstakes Class, and large bulbs, 1 inch and up, worth all of \$4.00—

SPECIAL SALE PRICE—\$1.94 Postpaid

"MOTHER'S DAY"
LILY GLOOM
3 Philippine Lily. Grand
...
These 12 Glorious Lilies—
hardy everywhere, a color-
ful, "all season" assort-
ment (worth all of \$1.00)
OUR SALE PRICE—
\$1.66 Postpaid

**FERRIS' "SUNSET"
PHLOX BARGAIN**
...
OUR BARGAIN PRICE—
\$2.55 Postpaid



ORCHID ROSE

SPECIAL SALE PRICE \$1.39 Postpaid

OUR BARGAIN PRICE—
\$1.39 Postpaid

SMASHING FERRIS' HARDY AT BARGAIN



SIX BEAUTIFUL SHRUBS

- ALTHEA** — Rose of Sharon. Fall's most brilliant flowering shrub, with its masses of double rose-like blooms. Choice of Purple, Red, Pink or White. 12-18 in. select.
- JAPANESE BARBERRY.** Bushy, graceful, thorny plant that is so popular in hedges and foundation groups. For other sizes, see hedges on page 2. 12-18 in. transplants.
- SPirea BILLIARDI ROSEA.** Handsome, soft pink blooms cover the plant in Mid-summer. 2-ft. transplants.
- SPirea ANTHONY WATERER.** Favorite dwarf shrub; beautiful rose-crimson flowers; everblooming. 12-15 in. transplants.
- SPirea VAN HOUTTEI.** No shrub can equal the lovely Bridal Wreath. Graceful, arching branches are loaded with pure white blossoms in May-June. 18-24 in select.
- SYRINGA, MOCK ORANGE.** Noted for its very fragrant flowers of waxen white, resembling Orange blossoms. 18-24 in. transplants

In
This Group of
Six Beautiful Shrubs
You May Order:
Any 2 Plants for 48c;
Any 5 Plants for 90c
POSTPAID
(All one kind, or assorted,
to suit your needs.)

Purple Leaf Plum
A beautiful shrub you will surely want at your home, for its rich foliage of crimson and dark purple gives a wonderful contrast. 2-3 ft. specimens, 65c each; 2 for \$1.18; 5 for \$2.60. POSTPAID.

French Lilacs
Extra select Hybrids that are worth their weight in gold — Lilacs that often bloom the next year after planting — full, large, often double blooms of unusual fragrance and color. We offer you—4 French Lilacs (1 double Blue, 1 Double White, 1 Double Purple, and 1 Single Red) — 1-year, select, field-grown plants—the 4 for \$1.00 POSTPAID.

Seven Handsome Ferris Shrubs

- RED LEAVED BARBERRY.** It's glorious bronzed color is best in full sunlight. 18-24 in., select.
- DWARF DEUTZIA.** Dainty dwarf shrub, crowned with charming white flowers in May-June. 12-15 in. transplants.
- RED BRANCHED DOGWOOD.** A favorite shrub for landscaping, its showy, blood-red branches of especial wintertime interest. 18-24 in. transplants.
- GOLDEN ELDER.** Beautiful yellow foliage gives rich contrast in any planting. Should be in sunny location. 2-3 ft. transplants.
- JAPANESE FLOWERING QUINCE.** Handsome, scarlet flowers in May give it the title "Firebush." 18-24 in. transplants.
- WEIGELA ROSEA.** Favored for its elegant trumpet-shaped flowers of rose-pink. 18-24 in. select.
- WEIGELA EVA RATHKE.** Rich ruby-red blossoms that last a long time. 18-24 in. transplants.



In
This Group of
Seven Handsome Ferris Shrubs
You May Order:
Any 2 Plants for 58c;
Any 5 Plants for \$1.12
POSTPAID
(All one kind, or assorted,
to suit your needs.)



"MODEL" FLOWERING CRAB COLLECTION

- 1 Japanese Flowering Crab. Rose-red buds merging to white.
 - 1 Crimson Crab. Brilliant carmine flowers; red fruit.
 - 1 Scheldecker's Flowering Crab. Double, fragrant blooms of red and pink.
 - 1 Midget Crab. Lovely pink flowers in May; midget fruits in the Fall.
 - 1 Red Flowering Crab. Beautiful red flowers in early Spring; ornamental fruit later.
 - 1 Purple Flowering Crab. Handsome purplish-red flowers and foliage.
- These SIX Handsome Flowering Crabs—Strong, well-rooted plants, 18-24 inches high (well worth \$3.00)

FERRIS' BARGAIN PRICE—\$1.78 POSTPAID
(Or, Your Choice any Three for \$1.00, Postpaid)

HARDY VINES—For Shelter and Beauty

- Buy Our Select Plants at these Low Bargain Prices.
- ENGELMANN'S IVY.** Very rapid grower, hardy everywhere — fine for quick shade. Clings easily to fences, trellises or rough walls. 3 for 58c; 6 for 98c, postpaid.
 - BOSTON IVY.** Dainty, lovely vine with small overlapping leaves, forming dense sheet of deep green. Clings tightly to any surface. 3 for 80c; 6 for \$1.45, postpaid.
 - BITTERSWEET.** Favorite native vine, noted for its sprays of bright orange berries that are popular in Winter bouquets. 3 for \$1.00; 6 for \$1.75, postpaid.
 - CLEMATIS, LARGE FLOWERING.** Most gorgeous of all flowering vines. Choice of Jackmani (purple), Andre (red) or Henryl (white). 90c each; 2 for \$1.55, postpaid.

SALE of SHRUBS PRICES



HYDRANGEA P. G.



HYDRANGEA ARBORESCENS



FORSYTHIA

FIVE GLORIOUS SHRUBS

TARTARIAN HONEYSUCKLE, Pink and White. Hardy, tall growing shrub, ideal for screens and backgrounds. Artistic flowers followed by red berries. Choice of Pink or White. 2-3 ft. transplants.

HYDRANGEA ARBORESCENS. The Summer Hydrangea, or "Hills of Snow." Immense pure white panicles of bloom in June-July make a glorious show. 18-24 in. select.

HYDRANGEA P. G. The Fall Hydrangea; magnificent, globe-shaped blooms first white, with later tints of pink and lavender. 2 ft. select.

SNOWBALL. White, ball-shaped flowers in May-June are the pride of this old-fashioned shrub: 2-3 ft. transplants.

FORSYTHIA. The prettiest sight on the early Spring landscape, when clothed in its golden-yellow flowers. 3 ft. select.

In This Group of
Five Glorious Shrubs

You May Order:
Any 2 Plants for 73c;
Any 5 Plants for \$1.45

POSTPAID

(All one kind, or assorted, to suit your needs.)

DOLLAR SPECIALS

\$1.00 Each; Any Two For \$1.90; Any Three For \$2.75

(Parcel Post Prepaid)

- | | |
|--|-----------------|
| 5 CHOICE PEONIES (2 Red, 2 Pink and 1 White) | Postpaid \$1.00 |
| (Unnamed, but guaranteed all large, double-flowering sorts.) | |
| 35 BEAUTIFUL MIXED IRIS, unnamed | 1.00 |
| (From our Rainbow Iris fields.) | |
| 10 HANDSOME MIXED PHLOX, unnamed | 1.00 |
| (Brilliant blooms all Summer long.) | |
| 50 GLADIOLUS BULBS, Special Rainbow Mixture | 1.00 |
| (Large, blooming size.) | |

- | | |
|---|---------------|
| 25 GLORIOUS PERENNIALS, sturdy, field-grown | Postpaid 1.00 |
| (5 each: Mixed Delphiniums, Alaska Daisy, Anthemis, Yucca and Hibiscus.) | |
| 28 FAVORITE PERENNIALS, select, blooming-size | 1.00 |
| (4 each: Aquilegia, Chinese Lantern, Delphiniums, Dianthus, Gaillardia, Platycodon and Shasta Daisy.) | |
| 18 ROCK GARDEN PERENNIALS, select, blooming-size | 1.00 |
| (3 each: Viola, Dwarf Sedum, Helianthemum, Linum perenne, Gypsophila and Anthemis.) | |

\$1.00 Shrub Bargains

Selected, Northern-Grown Plants—
Ready to Bloom.

\$1.00 Each; Any Two for \$1.90
Any Three for \$2.75

Parcel Post Prepaid

- | | |
|--|-----------------|
| 25 Japanese Barberry, 9-12 in. strong | Postpaid \$1.00 |
| 15 Bridal Wreath, 12-15 in. | 1.00 |
| 8 Spirea Anthony Waterer, 1 ft. | 1.00 |
| 7 Spirea Billardi Rosea, 12-18 in. | 1.00 |
| 6 Althea, Rose of Sharon, 1 ft., assorted | 1.00 |
| 6 Beautiful Assorted Shrubs, 1 ft. average (1 each: Forsythia, Red Tartarian Honeysuckle, Spirea Van Houttei, Spirea Anthony Waterer, Mock Orange and Weigela Rosea) | 1.00 |
| 8 Favorite Shrubs, assorted, 1 ft. average (2 each: Golden Eider, Rose of Sharon, Spirea Van Houttei, Japanese Barberry) | 1.00 |



DWARF DEUTZIA

9 STATELY LILIES, select, blooming-size bulbs \$1.00
(4 Philippine, 3 Regal, 1 Scarlet Russian and 1 Henryi.)

30 FAVORITE IRIS, choice, colorful varieties \$1.00
(5 each: Purple Queen, Sambucus Beethoven, Madame Chereau, Khedive, Comte de St. Clair and Queen of May.)

4 SUPERB PERENNIALS—Brilliant New Specialties \$1.00
(2 Fall Asters, 1 Pink Cushion 'Mum and 1 Krimson King Carnation)—choice, blooming-size plants.

21 SELECT PERENNIALS—sturdy, field-grown plants \$1.00
(3 each: Gold Medal Hybrid Delphiniums, Coreopsis, Dianthus, Pyrethrum, Statice, Alaska Daisy and Viola.)

In This Group of
Five Superb Ferris Shrubs

You May Order:
Any 2 Plants for 83c;
Any 5 Plants for \$1.65

POSTPAID

(All one kind, or assorted, to suit your needs.)



SYRINGA VIRGINIAL

FIVE SUPERB FERRIS SHRUBS

BEAUTY BUSH. Fittingly named; handsome bell-shaped flowers of pink in May-June. 2 ft. select.

TARTARIAN HONEYSUCKLE, RED. Blooms of this delightful, tall-growing shrub are rose-crimson. 2-3 ft. transplants.

LILAC, COMMON. The old-time favorite, fragrant and lovely. Choice of Purple or White. 2-3 ft. transplants.

HIGH BUSH CRANBERRY. Popular for its ornamental, crimson berries in late Summer and Fall. 2-3 ft. select.

SYRINGA VIRGINIAL. Large, semi-double blooms of the finest fragrance; nearly ever-blooming. 18-24 in transplants.



LILAC, common



RED TARTARIAN HONEYSUCKLE

BE SURE TO SEND FOR OUR LARGE CATALOG IF YOU ARE IN NEED OF ANYTHING YOU DO NOT FIND IN THIS BARGAIN SHEET. THIS IS THE YEAR TO PLANT



HOOVER

FERRIS' PRIZE COLLECTIONS OF BEAUTIFUL FRAGRANT ROSES AT BARGAIN PRICES



JULIEN POTIN



MRS. CHAS. BELL



AT BARGAIN PRICES



PINK RADIANCE



PAUL'S SCARLET CLIMBER



FRAU KARL DRUSCHKI



MRS. PIERRE S. DU PONT



RUGOSA



EDITH NELLIE PERKINS



JOHN RUSSELL

OUR "PRIZE" CLIMBING ROSE COLLECTION

A 30-Foot Covering of Exquisite Bloom! THESE 10 CHOICE CLIMBING ROSES

OUR SPECIAL SALE PRICE—\$1.00 Postpaid

FERRIS' "PERFECTION" PILLAR ROSE COLLECTION

These 7 Superb PILLAR ROSES

All Strong, 2-year, field-grown plants.

OUR SPECIAL SALE PRICE—\$1.55 Postpaid

FERRIS' POPULAR RUGOSA HEDGE COLLECTION

These 12 Extra Hardy RUGOSA ROSES

Strong, well-rooted, 1-year plants.

OUR SPECIAL SALE PRICE—\$2.44 Postpaid

OUR "FAVORITE" JUNE ROSE COLLECTION

These 5 Splendid Hybrid PERPETUAL ROSES

- 3 Red Climbing Roses
- 3 Pink Climbing Roses
- 2 White Climbing Roses
- 2 Yellow Climbing Roses

These are splendid, hardy, popular Climbers that are favorites with planters everywhere, but will not be named. The perfect covering for a fence, trellis or arbor.

All Select, 1-year, field-grown plants.

- 1 Paul's Scarlet Climber. "The Reddest Rose that Grows."
- 1 Gardenia. Favorite yellow.
- 1 Dr. W. Van Fleet. Beautiful shell-pink.
- 1 Climbing American Beauty. Handsome deep pink.
- 1 Silver Moon. Large, glistening white.
- 1 Rose of Fairfield. Deep crimson.

The grandest assortment you can find pillars, trellises, arches, or the like. (Regular catalog price, \$2.30.)

- 4 Hansa. Rich red.
- 4 Sir Thomas Lipton. Clear white.
- 4 Belle Poitevine. Lovely rose-pink.

The famous Eskimo Beauties—hardy everywhere, even in the coldest climates, requiring no winter protection. Their shrubby plants are thickly covered with the handsome, double blooms over a long period of time—charming in groups around the home or in hedges. Plant 18 or 24 inches apart in a hedge.

- 1 Paul Neyron. Enormous blooms of rose-pink.
- 1 Marshall P. Wilder. Rich glowing red.
- 1 Frau Karl Druschki. Beautiful white.
- 1 George Ahrends. Abundant delicate-pink blooms.
- 1 Ulrich Brunner. Bright cherry-red.

These are the hardest of all the hybrid bush roses, and should be in every home planting. They are the largest of all roses, richest in fragrance, most brilliant in color.

All 2-year, field-grown, blooming size plants.

OUR SPECIAL SALE PRICE—\$1.39 Postpaid

OUR "GLORY" EVERBLOOMING ROSE COLLECTION

These 6 Elegant Everblooming ROSES

OUR SALE PRICE—\$1.63 Postpaid

"MOTHER'S DAY" EVERBLOOMING ROSE COLLECTION

These 6 Gorgeous Everblooming ROSES

Royal Beauties—each a Blue Ribbon.

OUR SALE PRICE—\$2.22 Postpaid

OUR "GARDEN CLUB" EVERBLOOMING ROSE COLLECTION

These 10 Marvelous Everblooming ROSES

OUR SALE PRICE—\$3.49 Postpaid

IF YOU DO NOT FIND THE ASSORTMENTS YOU NEED IN THIS BOOKLET, SEND FOR OUR LARGEST CATALOG, WHICH IS FULL OF LANDSCAPE PLANS AND SUGGESTIONS

OUR "REGAL" EVERBLOOMING ROSE COLLECTION

These 6 Extra Grand Everblooming ROSES

OUR SALE PRICE—\$2.79 Postpaid

AMATEUR'S COMPLETE ROSE-GARDEN COLLECTION

- 2 PILLAR ROSES—1 Climbing American Beauty (glorious deep pink); 1 Paul's Scarlet Climber (intense scarlet).
- 3 RUGOSA ROSES—1 Hansa (fine red); 1 Belle Poitevine (clear rose-pink); 1 Sir Thos. Lipton (pure white).
- 3 JUNE ROSES—1 Paul Neyron (enormous pink); 1 Frau Karl Druschki (superb white); 1 Marshall P. Wilder (rich glowing red).
- 22 EVERBLOOMING HYBRID TEA ROSES—2 Golden Dawn (rich sunflower yellow); 2 Talisman (orange, red and yellow blend); 2 E. G. Hill (dazzling scarlet); 2 K. A. Victoria (large perfect white); 2 J. J. L. Mock (superb two-toned pink); 2 Etoile de Hollande (bright crimson); 2 President Hoover (grand blend of cerise, orange and gold); 2 Soeur Therese (handsome yellow); 2 Mrs. Chas. Bell (exquisite shell-pink); 2 Red Radiance (lovely cerise-red); 2 Pink Radiance (gorgeous pink).

THESE 30 MAGNIFICENT ROSES—the Finest We Can Select for your All-Season ROSE GARDEN, that will provide an enormous amount of exquisite, fragrant blooms the season through. All extra select, 2-year, field-grown plants. (Regular catalog price, \$11.75.)

OUR EXTRA-SPECIAL SALE PRICE—\$9.59 Postpaid

4 POPULAR EVERBLOOMING ROSES

1 RED — 1 WHITE — 1 PINK — 1 FLAME YELLOW

All 2-year, select, field-grown plants, not named but guaranteed to be choice varieties that will bloom all season long starting this year—fine colors—rich fragrance.

\$1.00 Postpaid

CRIMSON RAMBLER

SOEUR THERESE



RED RADIANCE

FERRIS' SUPREME

BEAUTIFUL, HARDY SPECIMENS FOR ORNAMENTAL

(These select specimens have all been three or four



SILVER CEDAR, FERRIS' GRAFTED Narrow, compact, formal columns of bright, shining silver so handsome at the entrance or in the foundation setting. Grafts for our superior type were selected from trees of the very bluest blue and of the most perfect form. A grand landscape evergreen, hardy everywhere. 3 ft. Specimens, B&B, \$3.50 each; 2 (MATCHED PAIR), B&B, for \$6.50.

MEYER JUNIPER

CHINESE COLUMN JUNIPER. Exquisite, living columns for the entrance, foundation planting, or outdoor living room, with thick, lacy foliage of deep blue-green. Superbly hardy as well as beautiful.

4 ft. Specimens, GREEN TYPE, B&B, \$3.00 each; 2 (MATCHED PAIR), B&B, for \$5.50. 5½ ft. Specimens, BLUE TYPE, B&B, \$5.50 each; 2 (MATCHED PAIR), B&B, for \$10.00.

COLUMN RED CEDAR. Elegant columns for formal tones—a new type we have grafted for particular landscape effects. Deep rich green. 3-4 ft. Specimens, B&B, \$3.00 each; 2 (MATCHED PAIR), B&B, for \$5.50.

PYRAMIDAL ARBOR-VITAE. Classic, slender, pointed trees thickly cloaked in lacy, bright green foliage, never growing too tall or broad, nor do they require shearing. Splendid for almost any landscape purpose.

3-4 ft. Specimens, B&B, \$3.00 each; 2 (MATCHED PAIR), B&B, for \$5.00. 4-5 ft. Specimens, B&B, \$4.00 each; 2 (MATCHED PAIR), B&B, for \$7.00.

GLOBOSA ARBOR-VITAE. Use this charming, ball-shaped evergreen in the border or foreground.

12-18 in. Specimens, B&B, \$1.10 each; 2 (MATCHED PAIR), B&B, for \$1.85.

PONDEROSA PINE. There is the beauty of strength and massiveness in this evergreen—the tree with the extra long, deep green needles—so fine for specimen planting, or for backgrounds and groups.

5 ft. Specimens, B&B, \$2.10 each; 2, B&B, for \$4.00.

DWARF MUGHO PINE. Handsome dwarf pine with dark, rich green foliage, forming a compact little globe. One of the most satisfactory evergreens for the foreground and foundation.

12x18 in. heavy, B&B, \$1.50 each; 2, B&B, for \$2.75.

DOUGLAS FIR. The superlative, "all-purpose" evergreen—unequaled for windbreaks, splendid in hedges, and a handsome tree as a specimen on the lawn or in groups and backgrounds. Its long, graceful branches are densely covered with deep green, lustrous needles; it grows rapidly and compactly, is supremely healthy and hardy, and the longest lived of them all.

3-4 ft. Specimens, B&B, \$1.75 each; 2, B&B, for \$3.00.

4-5 ft. Specimens, B&B, \$2.25 each; 2, B&B, for \$4.00.

COLORADO BLUE SPRUCE. Trees of fine form and color, splendid for specimen planting on the lawn or in groups for the background. The deep green lustrous foliage often has a blue cast, especially during the growing season. Perfectly hardy.

3-4 ft. Specimens, B&B, \$2.75 each; 2, B&B, for \$4.85.

4-5 ft. Specimens, B&B, \$4.25 each; 2, B&B, for \$7.25.

ANDORRA JUNIPER. Handsome, dwarf Juniper with low, spreading branches of silvery green, turning at the first touch of frost to a beautiful mauve-pink. Gives glorious contrast effects; ideal for terraces and rockeries.

2½ ft. Specimens, B&B, \$2.75 each;

2 (MATCHED PAIR), B&B, for \$5.00.

SILVER CEDAR

Ferris' "Harmony" Evergreen Group

- (1) 1 Pyramidal Arbor-Vitae Spec. 3-4 ft. B&B..... \$3.00
- (2) 1 Ferris' Grafted Silver Cedar Spec. 3 ft. B&B..... 3.50
- (3) 1 Chinese Column Juniper Spec. (Green Type) 4 ft. B&B 3.00
- (4) 1 American Yew Spec. 2 ft. B&B..... 2.50
- (5) 1 Dwarf Mugho Pine 12x18 in. heavy B&B..... 1.50
- (6) 1 Globosa Arbor-Vitae Spec. 12-18 in. B&B..... 1.10

Total.....\$14.60

OUR SPECIAL SALE PRICE—\$12.70

6 OUTSTANDING FAVORITES for landscape planting—trees that give distinction to the home and year-around beauty. This is an ideal assortment for the foundation planting or outdoor living room.



DOUGLAS FIR

CONCOLOR FIR

CONCOLOR FIR

The grand Silver Fir—most magnificent lawn tree known. Foliage is long, soft and graceful, merging from light green to silvery blue. Perfectly hardy—a tree that should be on every home grounds. Our specimens are the finest ever produced; they are bound to please you.

3-4 ft. Specimens, B&B, \$3.25 each; 2, B&B, for \$6.00.

4-5 ft. Specimens, B&B, \$3.75 each; 2, B&B, for \$7.00.

5-6 ft. Specimens, B&B, \$4.75 each; 2, B&B, for \$9.00.



SCOTCH PINE. Always decorative—hardy everywhere—thick, blue-green needles of medium length. Splendid for lawn groups and screens.

PONDEROSA PINE. Famed for its extra long needles; the bushy, full specimens are invaluable for solid backgrounds and landscape groups.

Choice either Pine—2-3 ft. Specimens, B&B, \$1.00 each; 2, B&B, for \$1.75

Ferris' "Magnificent" Fir Collection

- 2 Concolor Fir Spec. 3-4 ft. B&B \$6.00
- 2 Douglas Fir Spec. 3-4 ft. B&B 3.00
- 4-5 ft. Spec. B&B \$7.00
- 4-5 ft. Spec. B&B 4.00

Totals.....\$9.00

OUR SPECIAL SALE PRICES—\$8.25

\$11.00

For lawn specimens, groups and backgrounds, Ferris' handsome Firs are real masterpieces—wonderfully hardy and healthy, rich in color, grand in form, each year becoming more beautiful.

CHINESE COLUMN JUNIPER

EVERGREEN BARGAINS

ANDORRA JUNIPER

PLANTING—AMAZING LOW PRICES

(times transplanted and root-pruned.)

COLORADO BLUE SPRUCE SHINERS. The tree that everyone longs for—with its wonderful covering of silvery blue, and its perfect pyramid form. These are the "EXTRA BLUE" trees that we marked in the nursery during the Summer when they displayed a glorious silver luster. Every year they become more beautiful, more colorful.
2½-3 ft. Specimens, B&B, \$7.00 each;
2, B&B, for \$12.50.
3-4 ft. Specimens, B&B, \$9.00 each;
2, B&B, for \$16.50.
4-5 ft. Specimens, B&B, \$12.00 each;
2, B&B, for \$22.00.

WHITE SPRUCE. We grow the western type of White Spruce, sold by many nurseries as Black Hills Spruce, as they are almost identical in appearance. It develops a beautiful, compact pyramid of light shimmering green, so desirable for any part of the home planting.
3-4 ft. Specimens, B&B, \$1.00 each;
2, B&B, for \$1.85.
4-5 ft. Specimens, B&B, \$1.75 each;
2, B&B, for \$2.85.
5-6 ft. Specimens, B&B, \$2.75 each;
2, B&B, for \$4.25.

NORWAY SPRUCE. An old-time favorite, much used for living Christmas Trees on the lawn, in hedges, screens and sheiter-belts. The fine looking pyramid it forms is densely covered with short, dark green needles. We are offering you here some very choice specimens.
2-3 ft. Specimens, B&B, 90c each;
2, B&B, for \$1.65.
3-4 ft. Specimens, B&B, \$1.00 each;
2, B&B, for \$1.85.
4-5 ft. Specimens, B&B, \$1.75 each;
2, B&B, for \$2.85.

PYRAMID JUNIPER. A slim, symmetrical cone of lovely gray-green, turning in the Fall to a decided plum color. Its picturesque coloring and fine form give distinction to any ornamental planting.
2½-3 ft. Specimens, B&B, \$2.75 each;
2 (MATCHED PAIR), B&B, for \$5.00.

FERRIS' BLUE CEDAR. We are proud to be able to offer this striking new type to our customers; a handsome, conical Juniper, with thick, feathery foliage of silver-gray; wonderfully hardy. Ideal for any part of the landscape.
4½ ft. Specimens, B&B, \$3.50 each;
2 (MATCHED PAIR), B&B, for \$6.50.

MEYER JUNIPER. The most fascinating of all the new dwarf evergreens—charming, rather irregular form, with thick, pointed foliage of a rich, shining blue color. Close to the pool or in the rockery, its unusual character is set off to perfection; in borders or foundation groups it gives superb contrast.
15-20 in. Specimens, B&B, \$3.00 each;
2 (MATCHED PAIR), B&B, for \$5.55.

PFITZER'S JUNIPER. Very similar to the Savin Juniper in appearance, with feathery foliage of a light green color, and graceful, arching branches. If the leaders are staked upright, a broad, informal pyramid is formed.
12x18 in. Specimens, B&B, \$1.50 each;
2 (MATCHED PAIR), B&B, for \$2.85.
3x4 ft. Specimens, B&B, \$3.25 each;
2 (MATCHED PAIR), B&B, for \$6.00.

TAMARIX JUNIPER. Lacy, feathery foliage, resembling the delicacy of the Tamarisk shrub, its low compact growth forming a mat of light, misty green Splendid for edging and the rock garden.
2x2½ ft. Specimens, B&B, \$2.25 each;
2 (MATCHED PAIR), B&B, for \$4.00.

JAPANESE JUNIPER. A low creeper of picturesque outline; dense, sharp-pointed foliage of blue-green spreads out in a lovely fashion, seldom raising more than 8 inches from the ground. Supremely useful in the low border, terrace and rock garden, or edging the pool.
2x2½ ft. Specimens, B&B, \$2.50 each;
2 (MATCHED PAIR), B&B, for \$4.50.

OUR "DWARF-BEAUTY" EVERGREEN GROUP

Four handsome, low growing Evergreens that are perfect for the Rock Garden or near the Pool—ideal, too, for the low foundation.

- 1 Savin Juniper Spec.
12 x 18 in. B&B . . . \$1.00
- 1 Meyer Juniper Spec.
15-20 in. B&B . . . 3.00
- 1 Tamarix Juniper
Spec. 2x2½ ft. B&B 2.25
- 1 Sargents Juniper
Spec. 18 x 24 in. B&B 2.25
- Total \$8.50

OUR BARGAIN PRICE—
\$6.50

WINDBREAK EVERGREENS AND SMALLER SIZES—See Our Extra Fine Bargains on Them on Page 11.

B&B Means BALLED AND BURLAPPED

The tree is dug with a solid ball of rich, heavy loam in which the tree has been growing for years, which comes up around the root system completely protecting it in every way, and this ball is firmed and held in place by a secure covering of burlap and heavy twine. Our ground here at the nursery is the finest in the world for Balling evergreens.

All evergreens offered on pages 8 and 9 are Balled and Burlapped. If you do not wish them Balled and Burlapped, deduct 25c per tree from the price.

COLORADO BLUE SPRUCE SHINER



Spiny Greek Juniper.
As lovely as a Grecian urn is this hardy, semi-dwarf evergreen. Slowly and evenly it develops a broad, low pyramid of beautiful blue; a great favorite for the foundation planting, rockery and pool, or formal garden.
2½ ft. Specimens, B&B, \$2.75 each;
2 (MATCHED PAIR), B&B, for \$5.20.

Savin Juniper
Most popular of all trailing evergreens. Dark green, tufted foliage covers dense, spreading branches. You will certainly like our fine specimens for the low border or foreground.
12x18 in. Specimens, B&B, \$1.00 each; 2 (MATCHED PAIR), B&B, for \$1.80.
2x3 ft. Specimens, B&B, \$2.00 each; 2 (MATCHED PAIR), B&B, for \$3.65.

SPINY GREEK JUNIPER

SAVIN JUNIPER

If you Want the Cheapest and Best Evergreens in the United States, Write for Our Large Catalog Giving Complete List.

FERRIS' FINEST FRUITS

Red Delicious

THAT SAVE THE FAMILY BUDGET



Concord



Latham Raspberry



Cumberland Raspberry



APPLE TREES

Yellow Transparent. Summertime's golden-yellow favorite.
 Duchess. Top of the list for Summer cooking apples.
 Anoka. Splendid new Summer apple that begins to bear next year after planting.
 Wealthy. Grand Fall apple, juicy, rich flavor.
 Bellecious. Most popular Winter apple ever grown.
 Grimes Golden. It is hard to beat this yellow Winter apple of spicy flavor.
 Haralson. Excellent Winter apple for the North.
 Jonathan. One of the greatest of all Winter apples. Its flavor unsurpassed.
 McIntosh. Beautiful Winter apple of fine quality.
 Salome. Splendid, hardy apple for cold climates.
 Stayman's Winesap. Very large Winter apple of rich flavor.
 Dolgo Crab. Noted for its beauty, hardness and dark red fruit so fine for jelly.
 Whitney Crab. Large crabs of individual flavor, ideal for pickles and preserves.

4-6 ft. high, extra select, with 3-year root and 2-year top, any 2 for \$1.25—any 5 for \$2.65 (By Express)

Ferris' Apple trees have highest rating, for they are entirely hardy, northern-grown, grafted on whole roots, with scions taken from bearing trees—GUARANTEED TRUE TO NAME.

OUR "RED-WHITE-BLUE" GRAPE ASSORTMENT

- 4 Concord Grape. Favorite black grape the world over.
- 2 Moore's Early Grape. Delicious black grape, early.
- 2 Worden Grape. A sweet black grape, unequalled for table use.
- 1 Beta Grape. Hardest of all; splendid for jellies and wines.
- 1 Fredonia Grape. Wonderful, new, early black grape.
- 1 Caco Grape. Beautiful, hardy red grape of finest flavor.
- 1 Niagara Grape. Hardest and best white grape.
- These 12 Very Hardy, Outstanding Grapes—Strong, No. 1 plants that will start bearing next year. (Regular catalog price, \$2.00.)

OUR SPECIAL SALE PRICE—\$1.69 POSTPAID

FERRIS' FAMOUS CHERRY BARGAIN

- 3 Cherry Trees (Early Richmond or Montmorency)—Extra Hardy, Northern Grown—4 ft. average Postpaid \$1.20
- 6 Cherry Trees—Double Collection Postpaid \$2.25
- Early Richmond—Most popular early Cherry; favorite for pies.
- Montmorency—Large, fine red Cherry; 10 days later than Early Richmond.

FERRIS' "EXTRA HARDY" PLUMS

- SUPERIOR. Enormous, rich red fruit of finest flavor. Hardy everywhere.
- UNDERWOOD. A favorite for years; valued for its large, sweet fruit and heavy bearing qualities. Should be in every planting.
- RED WING. Large sized plums, yellow flushed red, of rich flavor.
- LA CRESCENT. Golden yellow; tender and sweet. Ideal for home use.
- ZUMBRA. Large, purple fruit, splendid for all purposes.

These Select, Northern Grown Plums, 4-5 ft. average height. Any 2 for \$1.45—Any 5 for \$3.50 (By Express).

OUR 1936 TREASURE CHEST

- 7 Apple Trees, average 4-5 ft.—1 Red June; 1 Duchess; 1 Wealthy; 1 Jonathan; 1 Bright Red Delicious; 1 Winesap; 1 Yellow Delicious.
- 3 Cherry Trees, average 3½-4 ft.—2 Early Richmond; 1 Montmorency.
- 12 Latham Red Raspberries, 2 yr. select.
- 12 Chief Red Raspberries, 2 yr. select.
- 12 Cumberland Black Raspberries, 1 yr. select.
- 50 Dunlap Strawberries.
- 50 Blakemore Strawberries.
- 25 Mastodon Everbearing Strawberries.
- 3 Concord Grape, 2 yr.
- 3 Agawam Grape, 2 yr.
- 2 Niagara Grape, 2 yr.

THESE 181 SELECT FRUIT TREES AND PLANTS—hardy varieties, bearing delicious fruits for every season—The Ideal Family Assortment. (Regular catalog price, \$8.35.)

FERRIS' "FAMILY FAVORITE" RASPBERRY ASSORTMENT R-3

- 12 New Chief Red Raspberries, 2-yr. Grand, hardy variety ten days earlier than Latham.
- 12 Latham Red Raspberries, 2-yr. Big, handsome berries of rich quality and flavor—hardy everywhere.
- 12 Cumberland Black Raspberries, 2-yr. transplants. Largest and finest of all the Black Caps.

These 36 Superior Ferris Raspberries—guaranteed to be strong, heavy plants that will bear some the first year, and a perfect assortment of the finest fruited (regular catalog price, \$2.40.)

OUR SPECIAL SALE PRICE—\$1.95 POSTPAID

ASSORTMENT R-4

- 25 New Chief Red Raspberries, 2-yr.
- 25 Latham Red Raspberries, 2-yr. transplants.
- 25 Cumberland Black Raspberries, 2-yr. transplants. Largest and finest of these 75 Popular Raspberries—strong, fruiting size plants (regular catalog price, \$4.00.)

OUR SPECIAL SALE PRICE—\$3.25 POSTPAID

If interested in larger quantities of small fruits, or different assortments than listed herein, send for our large catalog, or submit list and ask for special prices.



Grimes Golden

"SUPREME" WINTER APPLE BARGAIN
 2 Bright Red Delicious. The new hybrid Delicious of rich red, with the very finest quality.
 2 Yellow Delicious. Golden-yellow, juicy, crisp, delicious flavor—the finest yellow Winter apple.
 2 Sharon. Wonderful, new Winter apple of supreme hardness.
 These 6 Outstanding Apples, 4-6 ft., select, No. 1 trees—
OUR SALE PRICE
 By \$3.75 Express

Superior Plum



Montmorency Cherry



Dunlap Strawberry



SMALL FRUIT BARGAINS

Marvelous "All-Purpose" Strawberry Collections

These Special Prices on Strawberries are for Quick Acceptance
— Always Plant Strawberries Early.

DUNLAP. Immense, rich red berries of superb flavor—big producer, hardy everywhere—most widely sold of all Spring Strawberries. 100 Dunlap for 80c, Postpaid; 1,000 for \$4.50 (by express).

BLAKEMORE. Bright red, juicy berries of outstanding quality—wonderful for market and canning. 100 Blakemore for 80c, Postpaid; 1,000 for \$4.50 (by express).

FAIRFAX and DORSETT. The finest Spring Strawberries ever grown! Enormous, juicy, richly flavored berries, surpassing all others in yield and quality. Fairfax is conical, Dorsett more rounded. Try some in your garden. Choice of Fairfax or Dorsett, 50 for 78c; 100 for \$1.20, Postpaid; 500 for \$4.00 (by express).

MASTODON EVERBEARING. The King of all Everbearing Strawberries, giving you giant, richly flavored berries in three months' time. 100 Mastodon for \$1.50, Postpaid; 1,000 for \$10.00 (by express).

Strawberry Collection S-1

100 DUNLAP 50 BLAKEMORE
50 MASTODON EVERBEARING

These 200 Popular Strawberries (regular catalog price, \$2.20)
OUR SALE PRICE—\$1.92 Postpaid

Strawberry Collection S-2

100 DUNLAP 25 FAIRFAX
50 MASTODON EVERBEARING 25 DORSETT

These 200 Elegant Strawberries (regular catalog price, \$2.50)
OUR SALE PRICE—\$2.12 Postpaid

"Ideal" Strawberry-Raspberry Combination

50 Dunlap Strawberries
50 Blakemore Strawberries
50 Mastodon Everbearing Strawberries
25 Latham Red Raspberries, 2-yr.
25 Cumberland Black Raspberries, select, 1-yr.

THESE 200 CHOICEST FRUIT PLANTS—

Superbly hardy, northern-grown—a model assortment for the average family. (Regular catalog price, \$3.95.)

OUR EXTRA-SPECIAL SALE PRICE

Postpaid **\$3.44**



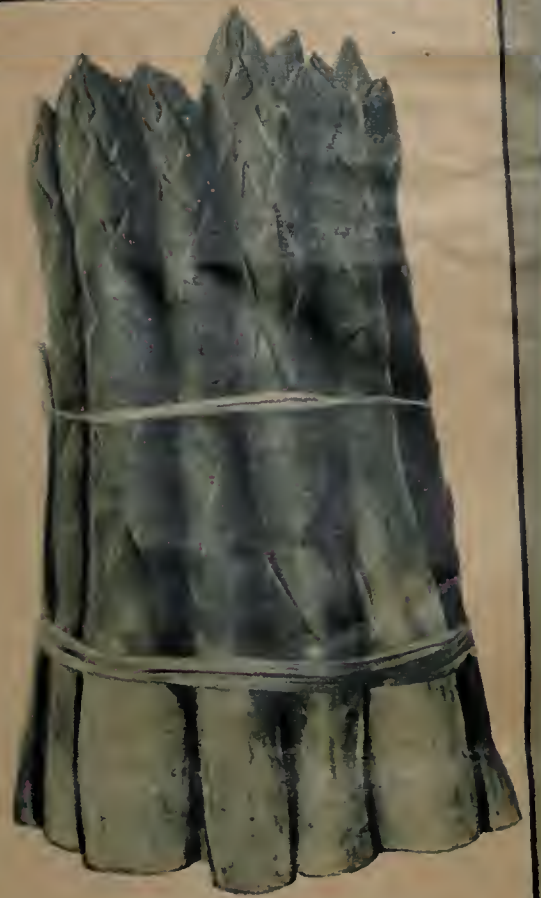
\$1.00 Small Fruit Bargains

Delicious, Hardy Varieties—Finest Fruiters

\$1.00 Each — Any Two for \$1.90
Any Three for \$2.75

Parcel Post Prepaid

	Postpaid
125 Dunlap Strawberry plants	\$1.00
125 Blakemore Strawberry plants	\$1.00
75 Favorite Strawberry plants (50 Giant Mastodon Everbearing and 25 Dunlap)	\$1.00
12 Concord Grapes, strong, No. 1 plants	\$1.00
8 Select, Assorted Grapes (3 Concord, 2 Moore's Early, 1 Worden, 1 Niagara and 1 Agawam), strong, No. 1 plants	\$1.00
100 Washington Rustproof Asparagus, 1-yr. strong	\$1.00
25 Latham Red Raspberries, 2-yr. select	\$1.00
25 New Chief Red Raspberries, 2-yr. select	\$1.00
25 Cumberland Black Raspberries, 1-yr. strong	\$1.00
5 Fay's Prolific Red Currants, select, No. 1	\$1.00
5 Houghton Gooseberries, select, No. 1	\$1.00



WASHINGTON ASPARAGUS Asparagus Bargain

Fresh, Tender Asparagus from Your Own Garden—
JUST TRY IT!

WASHINGTON RUSTPROOF. Very finest of all asparagus. 1-year, select roots, 25 for 35c; 50 for 60c; 100 for \$1.10, Postpaid; 500 for \$4.00 (by express).

THE FINEST IN

FERRIS' EVERGREEN WINDBREAKS

AT ROCK-BOTTOM PRICES

DOUGLAS FIR

The Leader! A Windbreak or Hedge of Ferris' Douglas Fir Will Last for Generations—Supremely Hardy and Beautiful.

	10	25	100
2-3 Ft. Heavy, Four Times Transplanted	\$6.50	\$13.75	\$50.00
3-4 Ft. Heavy, Four Times Transplanted	\$8.00	\$19.00	\$75.00

(50 trees at the 100 rate)

A tree of grand form, its graceful branches densely covered with heavy, dark green foliage. Use it for windbreaks, hedges, lawn groups or specimens, and you will never be disappointed.

WHITE SPRUCE

A Great Favorite for Farm Windbreaks—Hardy in the Coldest Places and a Handsome Grower.

	10	25	100
3-4 Ft. Heavy, Four Times Transplanted	\$5.00	\$11.75	\$45.00

(50 at the 100 rate)

You will be extremely proud of the fine looking shelter-belt or hedge Ferris' White Spruce will develop for you—strong, compact pyramids of light green often silvered—so desirable for any part of the home planting.

SCOTCH PINE

Staunch and Sturdy—Popular for Quick Windbreaks.

	10	25	100
4 ft. Heavy, Four Times Transplanted	\$4.00	\$9.00	\$35.00

(50 at the 100 rate)

Our stocky, bushy trees, thickly covered with medium long, dark green needles, will make you a good windbreak in a short time, growing well in poorer soils where other evergreens are more difficult to establish.

RED PINE

Hardy and Enduring—Fine for Shelter-belts and Woodlots.

	10	25	100
4-5 Ft. Heavy, Three Times Transplanted	\$3.00	\$7.25	\$28.00

(50 at the 100 rate)

Grows rapidly, in almost any soil, forming a splendid windbreak or background. Thick, long needles of lustrous green.

Our Combination Windbreak No. 1.

50 Douglas Fir, 18-24 in., twice transplanted	\$10.00
100 Chinese Elm, 18-24 in., select seedlings	4.50
Total	\$14.50

OUR BARGAIN PRICE TO YOU \$12.50

Here are two leaders in windbreak trees! Of the deciduous varieties, there is nothing to equal the Chinese Elm, with its very rapid, compact growth, and its complete hardiness. Then, to make your windbreak wonderfully protective, through the Winter as well as Summer, use two rows of our splendid Douglas Fir inside the Chinese Elm, planting them twice as far apart as the Elms.

Our Combination Windbreak No. 2

50 White Spruce, 3-4 ft. heavy, four times transplanted	\$22.50
100 Chinese Elm, 3-4 ft., select seedlings	15.00
Total	\$37.50

OUR BARGAIN PRICE TO YOU \$34.00

A grand low price on some of our finest trees! This is a combination that will make you an ideal windbreak—the quick, thick growing Chinese Elms for your outside rows, and the beautiful, hardy White Spruce for the inside rows.

For those who want Small Evergreens

	Postpaid Per 100	By Express 25 100
Norway Spruce seedlings, 8-12 in.	\$4.15	
White Spruce seedlings, 6-12 in.	4.15	
Douglas Fir seedlings, 4-8 in.	3.60	
White Pine seedlings, 6-10 in.	5.10	
Douglas Fir, 12-18 in., transplanted	\$3.75	\$12.00
White Spruce, 8-14 in., transplanted	3.00	10.00
Scotch Pine, 12-18 in., transplanted	3.40	12.50

(50 at the 100 rate)

OUR "SUPERLATIVE" WINDBREAK COLLECTION

25 Douglas Fir, 3-4 ft., Heavy
25 White Spruce, 3-4 ft., Heavy
These 50 Outstanding FERRIS EVERGREENS—well worth \$50.00—

OUR BARGAIN PRICE TO YOU \$28.00

Dollar Evergreen Specials

\$1.00 Each
Any Two for \$1.90
Any Three for \$2.75

Parcel Post Prepaid

	Postpaid
15 Douglas Fir seedlings, 4-8 in.	\$1.00
18 Norway Spruce seedlings, 8-12 in.	1.00
20 White Pine seedlings, 6-10 in.	1.00
7 White Spruce transplants, 1 ft. average	1.00
12 Douglas Fir transplants, 12-15 in.	1.00
5 Assorted Ornamental Evergreens, 8-12 in., transplanted (1 each: Colorado Blue Spruce, Douglas Fir, Norway Spruce, White Spruce, and Scotch Pine)	1.00
4 Savin Juniper transplants, 6x10 in.	1.00

WHITE SPRUCE WINDBREAK

Don't overlook our SPLENDID LANDSCAPE EVERGREEN OFFERS on pages 8 and 9. They are the finest ever made

"STAR BEAUTY"

PERENNIAL BARGAIN No. 1

14 Magnificent Perennials —
2 each of the Super varieties
shown on this page—Strong,
blooming size plants—

OUR
SPECIAL
SALE
PRICE—

\$2.72

Postpaid

**RED
PYRETHRUM**

Striking form of the
Painted Daisy, color a
bright rose-red. 5 for
80c, Postpaid.



TURN TO
OUR SPLENDID
DOLLAR
PERENNIAL
BARGAINS
ON PAGE 5

HYBRID DELPHINIUMS

Our Gold Medal Hybrids — the
choicest colors and types to be
found. 5 for 75c, Postpaid.



PERENNIAL SUPER-SPECIALS

The Very Finest of the New Introductions
EACH ONE A "STAR"
Select, Blooming Size Plants.

**KRIMSON KING
CARNATION**

Large, glowing, highly col-
ored blooms the season
through. Ours is the improved
strain—finest of them all.
3 for \$1.00, Postpaid.



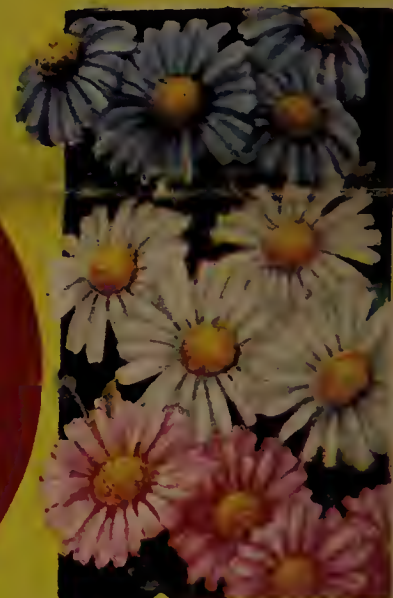
**AQUILEGIA,
LONG SPURRED**

Most beautiful of the
Columbine hybrids,
flowering the Sum-
mer through, the
loveliest color com-
binations imaginable.
Mixed only. 5 for 80c,
Postpaid.



FALL BLOOMING ASTERS

Tall, brilliant perennials for the late Summer garden,
bringing a wealth of color and beauty when most other
blooms are gone. Choice
of pink, blue or white.
3 for 95c, Postpaid.



"STAR BEAUTY"

**PERENNIAL BARGAIN
No. 2**

35 Splendid Perennials — 5
each of the Super varieties
shown on this page — Strong,
blooming size plants—

OUR
SPECIAL
SALE
PRICE

\$5.92

Postpaid

**VIOLA,
BLUE
PERFECTION**

A solid sheet of rich
blue flowers all sea-
son long. Ideal for
edging or the rock-
ery. 5 for 80c, Post-
paid.



VIOLA

PINK CUSHION "MUM"

A mountain of exquisite pink-tinted
blooms from August on. Finest of all
hardy Chrysanthemums.
3 for \$1.00, Postpaid.

