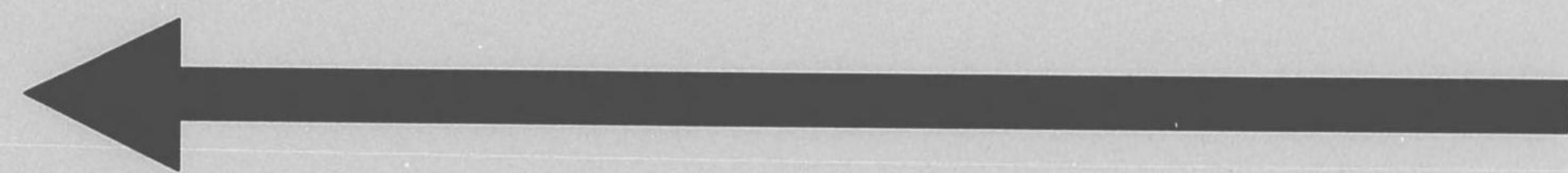


始



400

96

(M)



19-12

明治三十七年十月十八日  
第三種郵便物認可  
毎月一回十日發行  
明治三十八年九月一日臨時増刊發行

400  
96

大本營  
寫真班攝影  
陸地測量部藏版  
日露戰役寫真帖  
第四軍  
第三

THE RUSSO-JAPANESE  
WAR

NO. 17

PUBLISHED BY  
K. OGAWA.  
TOKYO, JAPAN.

第七十卷

THE RUSSO-JAPANESE WAR

Taken by the Photographic Department of the  
Imperial Headquarters.

No. 17.

PUBLISHER

K. OGAWA, F. R. P. S.,

Tokyo, Japan.

AGENTS.

KELLY WALSH, Ltd.,

Yokohama, Shanghai, Hongkong and Singapore.

(Copyright 1904, by the Military Survey Department.)



影撮班真寫營本大

帖真寫戰露日

版藏部量測地陸

卷七十第

所行發

部版出真一川小

地番八十町吉日區橋京市京東



CONTENTS. PART XVII.

Fourth Army. No. 3.

61. Trophies taken by the Fourth Army in the Battle near Moukden. No 1.
62. Trophies taken by the Fourth Army in the Battle near Moukden. No 2.
63. Trophies taken by the Fourth Army in the Battle near Moukden. No 3.
64. Trophies taken by the Fourth Army in the Battle near Moukden. No 4.
65. Trophies taken by the Fourth Army in the Battle near Moukden. No 5.
66. Trophies taken by the Fourth Army in the Battle near Moukden. No 6.
67. A distant view of Tieling.
68. A view of the banks of the Liao River near Tieling.
69. A Russian subterranean encampment at Tieling.
70. Part of the Russian defence near Tieling.
71. Burning of the Russian provisions at Tieling.
72. Russian barracks at Tieling.
73. A street in Tieling.
74. Tieling Station after its capture by the Japanese.
75. Building of stores at Tieling Station.
76. A Russian military store near Tieling.
77. Commander Akiyama and his detachment halting near Tzulushu.
78. Outside Tieling-cheng.
79. The Fourteenth Cavalry Regiment rallying in a field north of Tzulushu.
80. Detachment Commander Akiyama advancing northward from the neighbourhood of Tzulushu.
81. Fight of the Thirteenth Cavalry Regiment against the enemy in the neighbourhood of Shahotzu.
82. Halt of a detachment of the First Infantry Regiment which was sent to open communication with the Akiyama Detachment.
83. A detachment of the Mitake Independent Cavalry Corps fighting on a hill east of Huanshiling.
84. The Tenth Cavalry Regiment advancing northward from Weiyuanpumen.
85. A street in Ch'angt'u.
86. The outer wall of Kaiyuan.
87. A street in Kaiyuan.
88. The Llama Tower of Kaiyuan.
89. A railway bridge destroyed near Kaiyuan.
90. Repairing a military bridge at Shahotzu.

録目卷七十第

三第軍四第

- (一其) 品利戰軍四第ルケ於 = 戰會近附天奉 (61)
- (二其) 品利戰軍四第ルケ於 = 戰會近附天奉 (62)
- (三其) 品利戰軍四第ルケ於 = 戰會近附天奉 (63)
- (四其) 品利戰軍四第ルケ於 = 戰會近附天奉 (64)
- (五其) 品利戰軍四第ルケ於 = 戰會近附天奉 (65)
- (六其) 品利戰軍四第ルケ於 = 戰會近附天奉 (66)
- 景遠ノ嶺鐵 (67)
- 景光ノ岸沿河遼近附嶺鐵 (68)
- 營窖ノ軍露ルケ於 = 嶺鐵 (69)
- 部一ノ備防軍露ルケ於 = 近附嶺鐵 (70)
- 燼燒ノ秣糧敵ルケ於 = 嶺鐵 (71)
- 營兵ノ軍露ルケ於 = 嶺鐵 (72)
- 景光ノ街市嶺鐵 (73)
- 場車停嶺鐵ノ後領占軍我 (74)
- 築建ノ庫倉場車停嶺鐵 (75)
- 庫倉ノ軍露ル在 = 近附嶺鐵 (76)
- 員屬及長隊支山秋ルセ止停 = 近附樹鷺鶯 (77)
- 景光ノ外城嶺鐵 (78)
- 隊聯四十第兵騎ルセ合集 = 地畑方北樹鷺鶯 (79)
- 長隊支山秋ルセ進北リヨ近附樹鷺鶯 (80)
- 鬪戰ノ隊聯三十第兵騎シ對 = 敵ノ近附子河沙 (81)
- 隊聯一第兵歩ルタレラセ遣派メ爲ノ絡連隊支山秋 (82)
- 止休上途ノ隊部一
- ノ隊部一ノ隊兵騎立獨岳三ヲ於 = 地高方東嶺喜歡 (83)
- 鬪戰
- 隊聯十第兵騎ルセ進北リヨ門堡遠威 (84)
- 景光ノ街市圖昌 (85)
- 郭外ノ原開 (86)
- 景光ノ街市原開 (87)
- 塔嘛喇ノ原開 (88)
- 壞破ノ橋道鐵ルケ於 = 近附原開 (89)
- 理修橋軍ノ子河沙 (90)

(61)

(一其) 品利戰軍四第ルケ於ニ戰會近附天奉



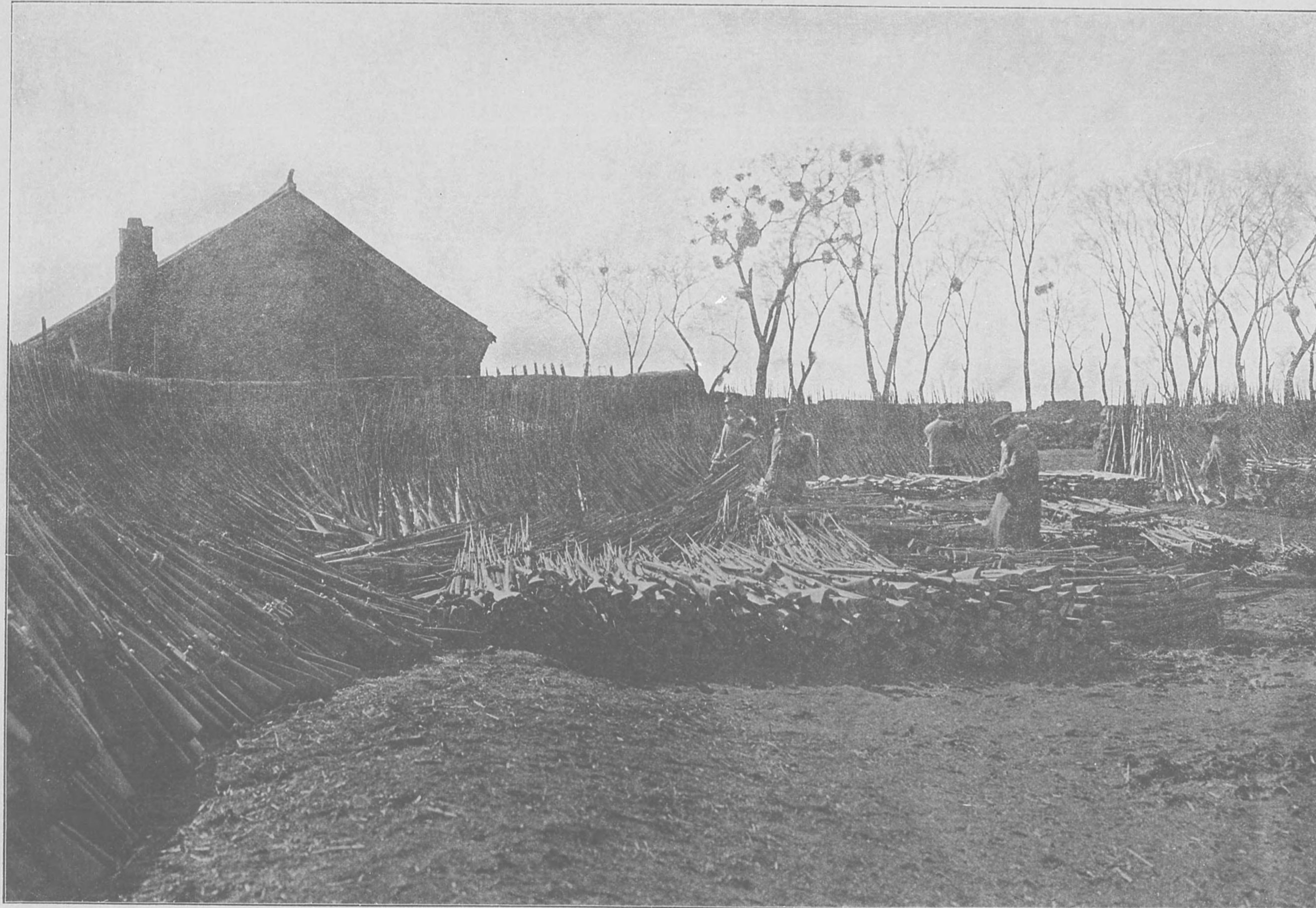
著作權所有  
陸地測量部

TROPHIES TAKEN BY THE FOURTH ARMY IN THE BATTLE NEAR MUKDEN. NO. 1.

COPYRIGHT.

(62)

(二其) 品利戰軍四第ルケ於ニ戰會近附天奉



著作權所有  
陸地測量部

TROPHIES TAKEN BY THE FOURTH ARMY IN THE BATTLE NEAR MOKDEN. NO. 2.

COPYRIGHT.

(63)

(三其) 品利戰軍四第ルケ於 = 戰會近附天奉



著作權所有  
陸地測量部

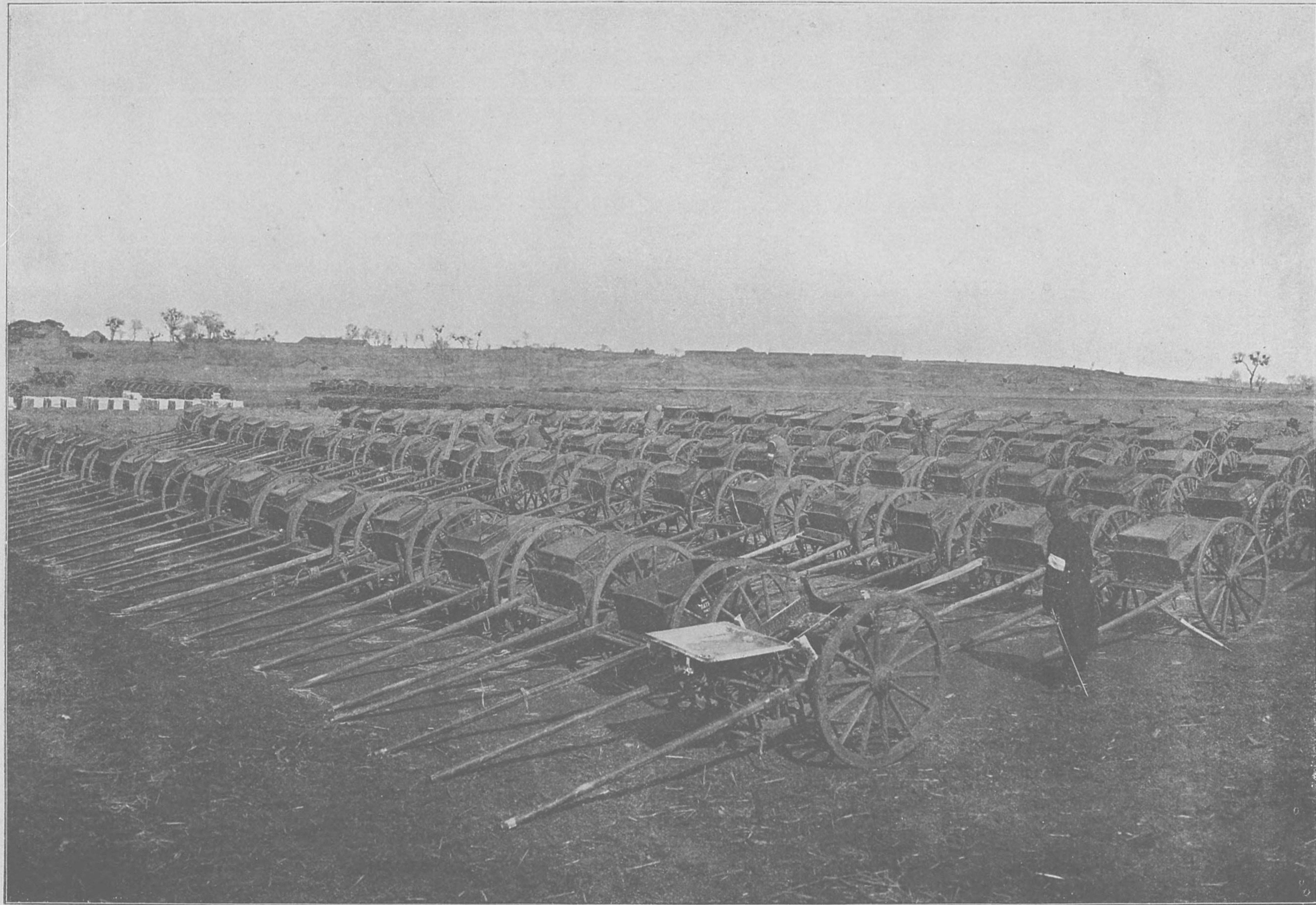
TROPHIES TAKEN BY THE FOURTH ARMY IN THE BATTLE NEAR MOKDEN. NO. 3.

COPYRIGHT.



(64)

(其四) 奉天附近會戰ニ於ケル第四軍戰利品



陸地測量部  
所有權著作

TROPHIES TAKEN BY THE FOURTH ARMY IN THE BATTLE NEAR MOUKDEN. NO. 4.

COPYRIGHT.

(65)

(五其) 品利戰軍四第ルケ於ニ戰會近附天奉



著作權所有  
陸地測量部

TROPHIES TAKEN BY THE FOURTH ARMY IN THE BATTLE NEAR MUKDEN. NO. 5.

COPYRIGHT.

(63)

(六其) 品利戰軍四第ルケ於ニ戰會近附天奉



著作權所有  
陸地測量部

TROPHIES TAKEN BY THE FOURTH ARMY IN THE BATTLE NEAR MOUKDEN. NO. 6.

COPYRIGHT.

(67)

景 遠 / 嶺 鐵



著  
作  
權  
所  
有  
陸  
地  
測  
量  
部

A DISTANT VIEW OF TIELING,

COPYRIGHT.

(68)

鐵嶺附近遼河沿岸之景光



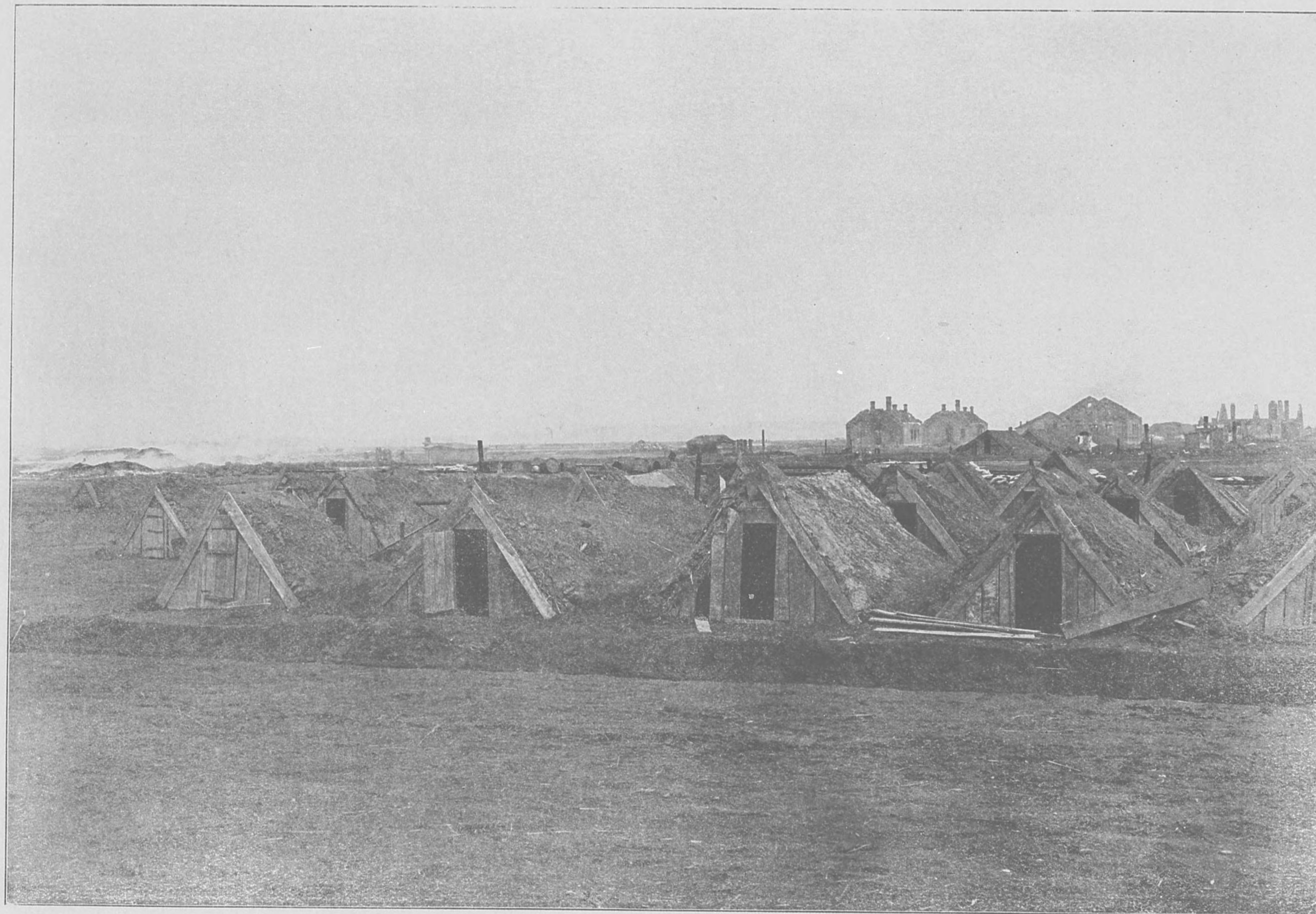
陸地測量部  
所有  
著作權

A VIEW OF THE BANKS OF THE LIAO RIVER NEAR TIELING.

COPYRIGHT.

(69)

營 窖 ノ 軍 露 ル ケ 於 ニ 嶺 鐵



著  
作  
權  
所  
有  
陸  
地  
測  
量  
部

A RUSSIAN SUBTERRANEAN ENCAMPMENT AT TIELING.

COPYRIGHT.

(70)

部一ノ備防軍露ルケ於ニ近附嶺鐵  
況狀ノ日五月四年八十三治明



著作權所有  
陸地測量部

PART OF THE RUSSIAN DEFENCE NEAR TIELING.

Date: 5th April, 1905.

COPYRIGHT.

(71)

鐵嶺ニ於ケル敵糧秣ノ燒燼

明治三十八年四月五日午前十時三十分ノ狀況



著  
作  
權  
所  
有  
陸  
地  
測  
量  
部

BURNING OF THE RUSSIAN PROVISIONS AT TIELING.

Time: 5th April, 1905, 10.30 a.m.

COPYRIGHT.



(72)

營兵ノ軍露ルケ於ニ嶺鐵

況狀ノ日五月四年八十三治明



著作權所有  
陸地測量部

RUSSIAN BARRACKS AT TIELING.

Date: 5th April, 1905.

COPYRIGHT.

(73)

景 光 ノ 街 市 嶺 鐵



著  
作  
權  
所  
有  
陸  
地  
測  
量  
部

A STREET IN TIELING.

COPYRIGHT.

(74)

我軍佔領後之鐵嶺停車場

明治三十三年四月五日之狀況



陸地測量部  
所有權著作

TIELING STATION AFTER ITS CAPTURE BY THE JAPANESE.

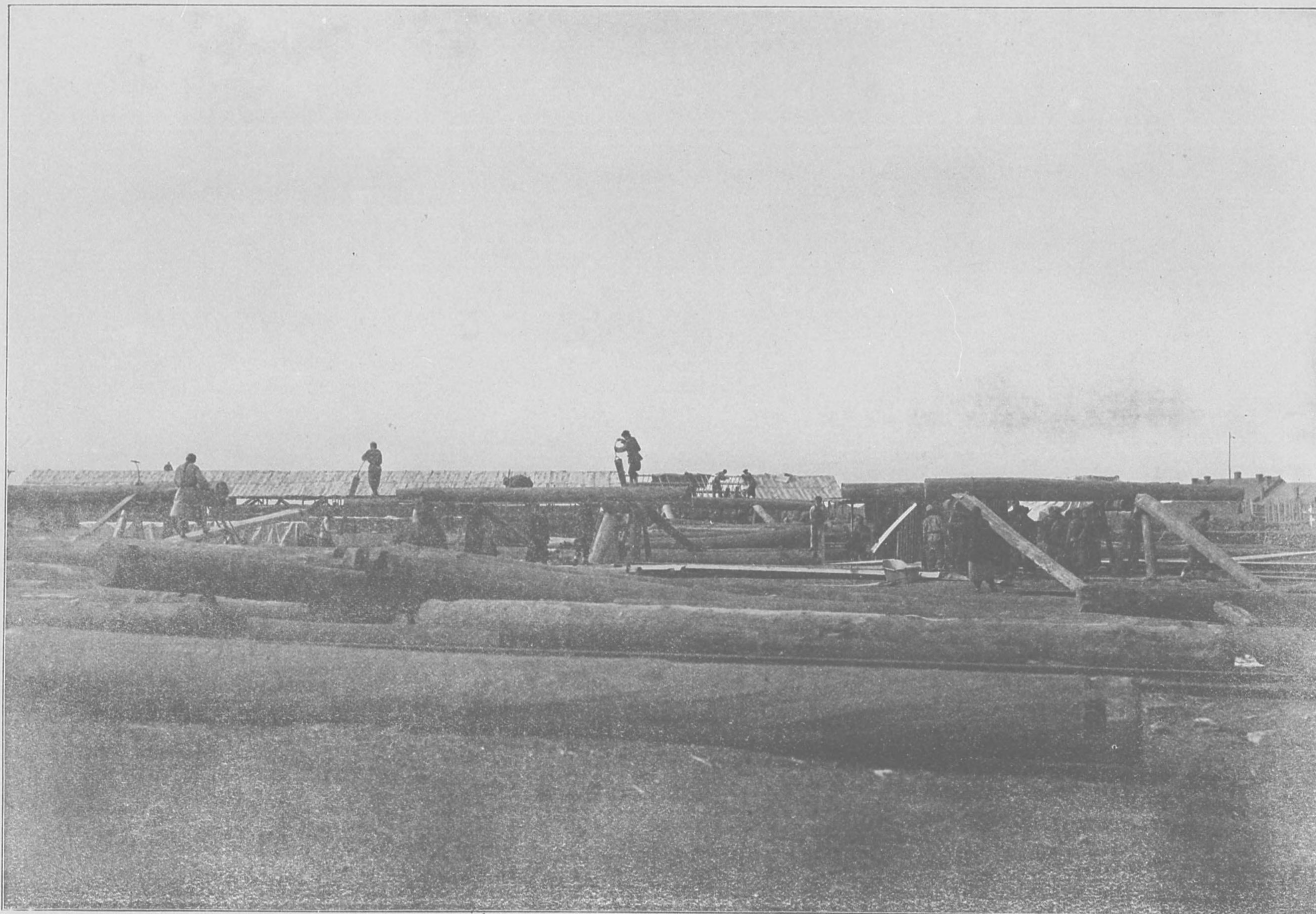
Date: 5th April, 1903.

COPYRIGHT.

(75)

鐵嶺停車場倉庫之建築

明治三十三年四月五日之狀況



陸地測量部  
著作權所有

BUILDING OF STORES AT TIELING STATION.

Date: 5th April, 1905.

COPYRIGHT.

(76)

鐵嶺附近ニ在ル露軍ノ倉庫



著  
作  
權  
所  
有  
  
陸  
地  
測  
量  
部

A RUSSIAN MILITARY STORE NEAR TIELING.

COPYRIGHT.

(77)

員屬及長隊支山秋ルセ止停ニ近附樹驚鷲

況狀ノ分十五時一十前午日八月四年八十三治明



著作權所有  
陸地測量部

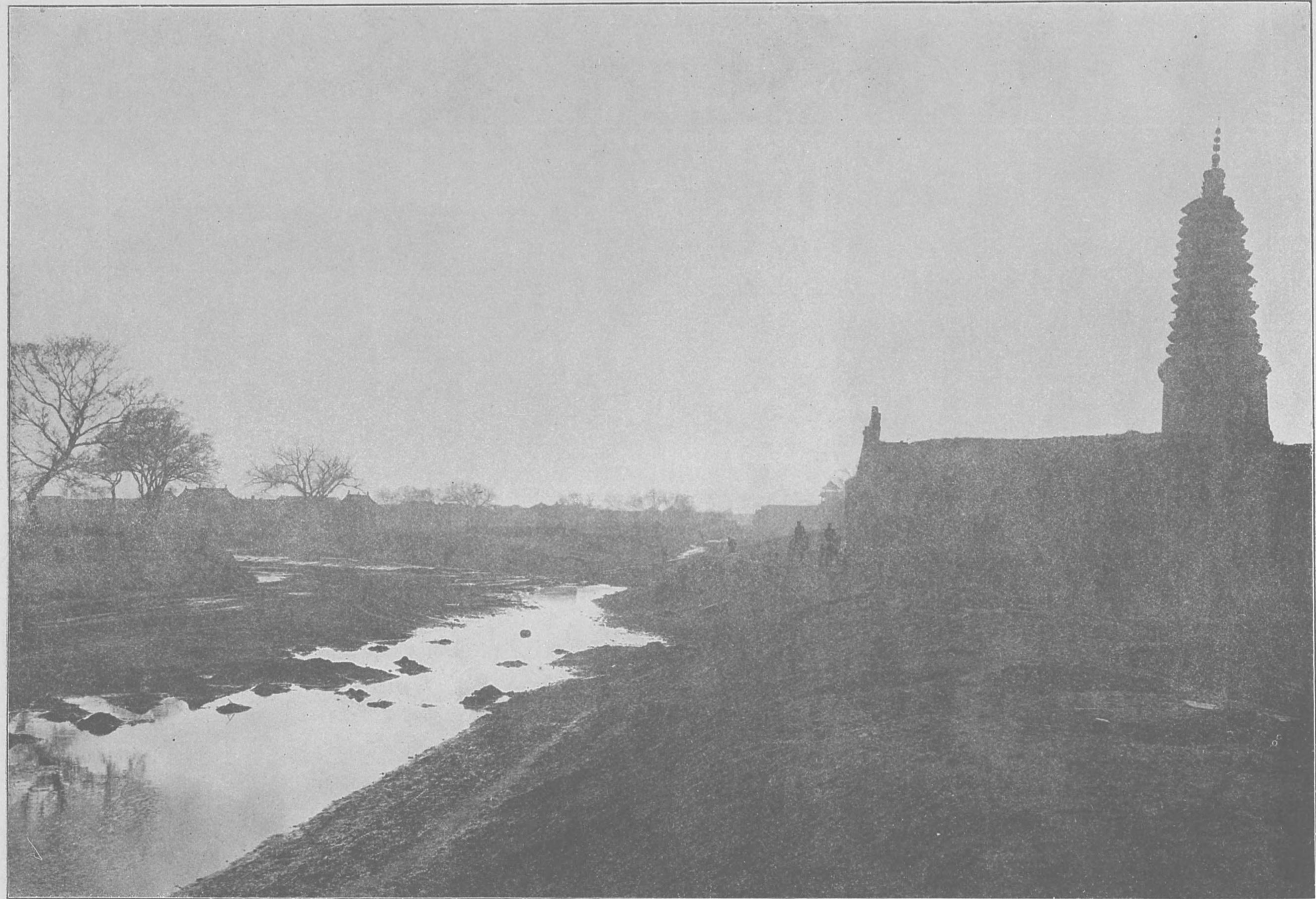
COMMANDER AKIYAMA AND HIS DETACHMENT HALTING NEAR TZULUSHIU.

Time: 5th April, 1905, 11.50 a.m.

COPYRIGHT.

(78)

景 光 ノ 外 城 嶺 鐵



著 作 權 所 有  
陸 地 測 量 部

OUTSIDE TIELING-CHENG.

COPYRIGHT.

(79)

隊聯四十第兵騎ルセ合集ニ地畑方北樹驚鷺

況狀ノ時二後午日八月四年八十三治明



著  
作  
權  
所  
有  
陸  
地  
測  
量  
部

THE FOURTEENTH CAVALRY REGIMENT RALLYING IN A FIELD NORTH OF TZULUSHU.

Time: 8th April, 1905, 2.00 p.m.

COPYRIGHT.



(80)

長隊支山秋ルセ進北リヨ近附樹鷲鷲

況狀ノ分十五時五後午日八月四年八十三治明



著作權所有  
陸地測量部

DETACHMENT COMMANDER AKIYAMA ADVANCING NORTHWARD FROM THE  
NEIGHBOURHOOD OF TSULUSHU.

Time: 8th April, 1905, 5.50 p.m.

COPYRIGHT.

(81)

闘戦ノ隊聯三十第兵騎シ對ニ敵ノ近附子河沙  
況狀ノ時三後午日一十月四年八十三治明



著作權所有  
陸地測量部

FIGHT OF THE THIRTEENTH CAVALRY REGIMENT AGAINST THE ENEMY IN THE  
NEIGHBOURHOOD OF SHAHOTZU.

Time: 11th April, 1905, 3.00 p.m.

COPYRIGHT.

(82)

止休上途ノ隊部一隊聯一第兵歩ルタレラセ遣派メ爲ノ絡連隊支山秋  
況狀ノ時十前午日四十月四年八十三治明



著作權所有  
陸地測量部

HALT OF A DETACHMENT OF THE FIRST INFANTRY REGIMENT WHICH WAS SENT  
TO OPEN COMMUNICATION WITH THE AKIYAMA DETACHMENT.

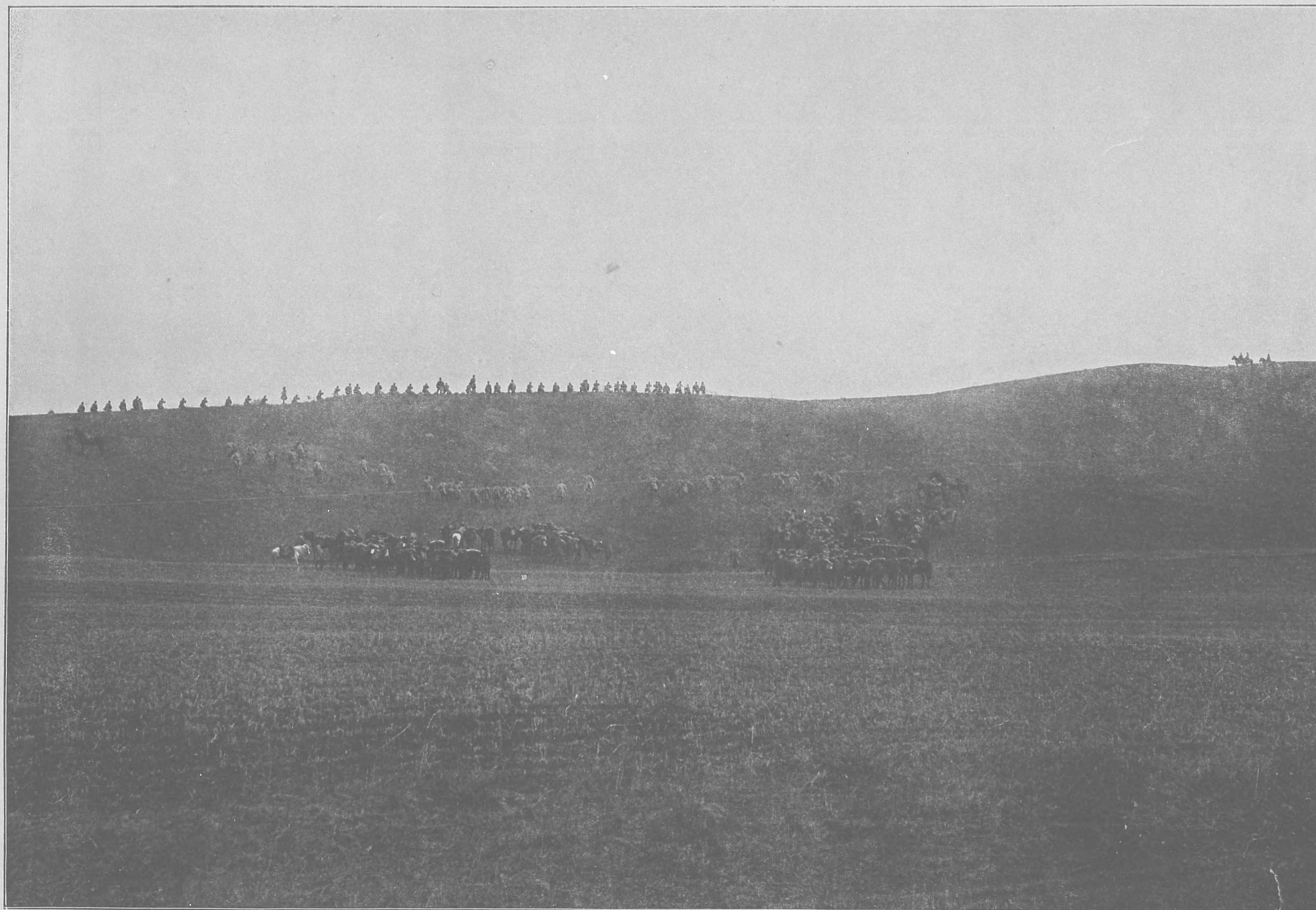
Time: 14th April, 1905, 10.00 a.m.

COPYRIGHT.

(83)

關戰ノ隊部一ノ隊兵騎立獨岳三ヲ於ニ地高方東嶺喜歡

況狀ノ分十時一十前午日七十月四年八十三治明



著作權所有  
陸地測量部

A DETACHMENT OF THE MITAKE INDEPENDENT CAVALRY CORPS FIGHTING  
ON A HILL EAST OF HUANSILING.

Time: 17th April, 1905. 11.10 a.m.

COPYRIGHT.

(84)

隊聯十第兵騎ルセ進北リヨ門堡遠威

況狀ノ時十前午日六十月四年八十三治明



著作權所有  
陸地測量部

THE TENTH CAVALRY REGIMENT ADVANCING NORTHWARD FROM WEIYUANPUMEN.

Time: 16th April, 1905, 10.00 a.m.

COPYRIGHT.

(85)

景 光 ノ 街 市 圖 昌



著  
作  
權  
所  
有  
  
陸  
地  
測  
量  
部

A STREET IN CH'ANGT'U.

COPYRIGHT.

(86)

郭 外 ノ 原 開



著  
作  
權  
所  
有  
陸  
地  
測  
量  
部

THE OUTER WALL OF KAIYUAN.

COPYRIGHT.

(87)

開原市街ノ光景



陸地測量部  
著作権所有

A STREET IN KAIYUAN.

COPYRIGHT.



(88)

塔 嘛 喇 丿 原 開



著  
作  
權  
所  
有  
陸  
地  
測  
量  
部

THE LLAMA TOWER OF KAIYUAN.

COPYRIGHT.

(89)

開原附近ニ於ケル鐵道橋ノ破損  
明三十八年四月十八日ノ狀況



陸地測量部  
著作権所有

A RAILWAY BRIDGE DESTROYED NEAR KAIYUAN.  
Date: 18th April, 1905.

COPYRIGHT.

(90)

理修橋軍ノ子河沙

況狀ノ分十三時零後午日九十月四年八十三治明



著作權所有  
陸地測量部

REPAIRING A MILITARY BRIDGE AT SHAHOTZU.

Time: 19th April, 1905, 0.30 p.m.

COPYRIGHT.

14/9/39

明治三十八年八月廿九日印刷  
明治三十八年九月一日發行

第拾七卷  
正價金 貳圓



大本營寫眞班攝影  
陸地測量部藏版

發行者

小川一眞

東京市麻布區麻布  
宮村町七十一番地

印刷所

小川寫眞製版所

東京市京橋區  
日吉町十三番地

發行所

小川一眞出版部

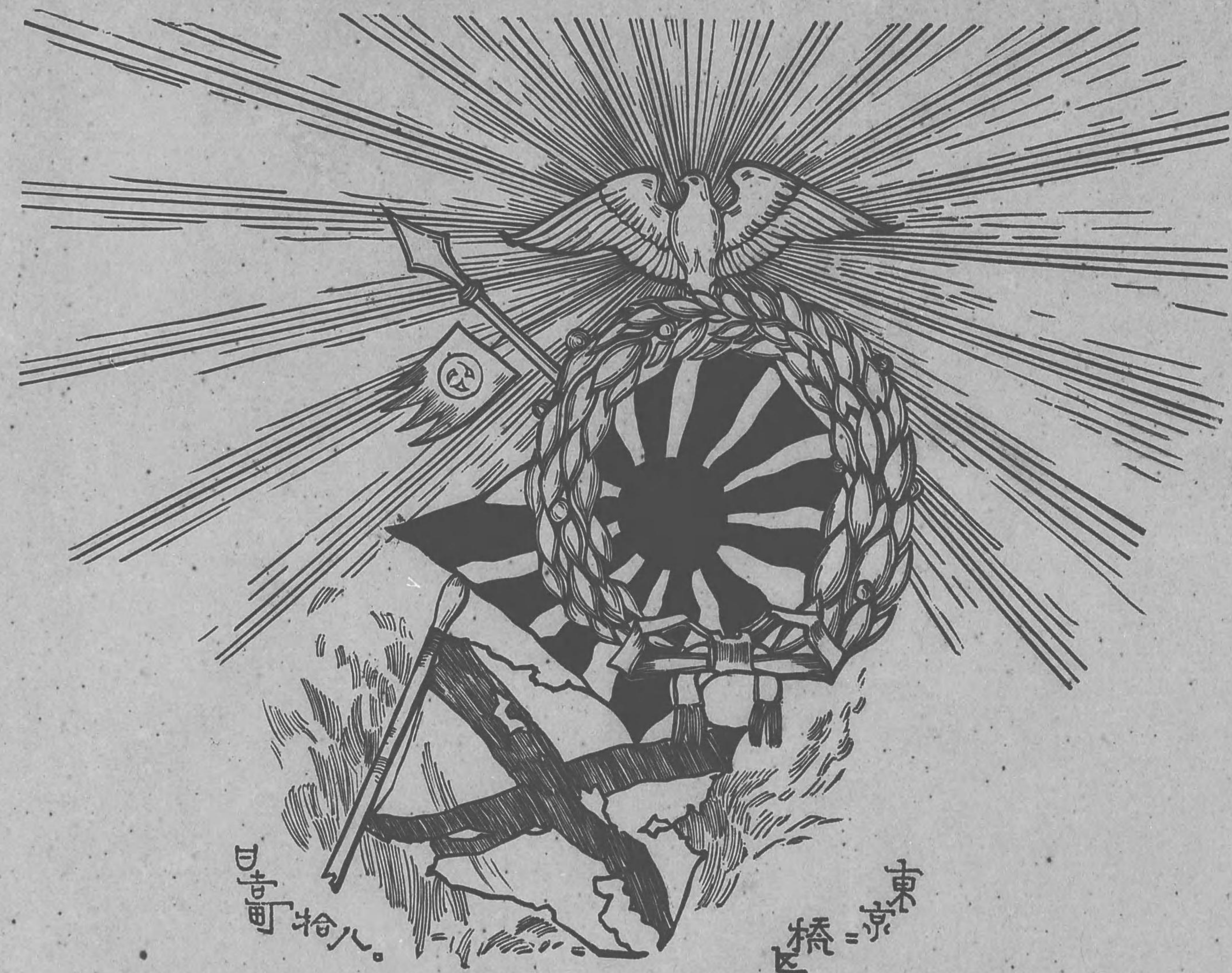
東京市京橋區  
日吉町十八番地

400  
96



1919-12

明治三十七年十月十八日  
第三種  
認可



小川真一出版部

明治三十七年十月十八日  
三權  
可  
日

終