

Historic, Archive Document

Do not assume content reflects current scientific knowledge, policies, or practices.

62.33

APR 17 1931

BELMONT GARDENS



PRESIDENT HERBERT HOOVER

1931

LIBRARY
 RECEIVED
 U. S. Department of Agriculture

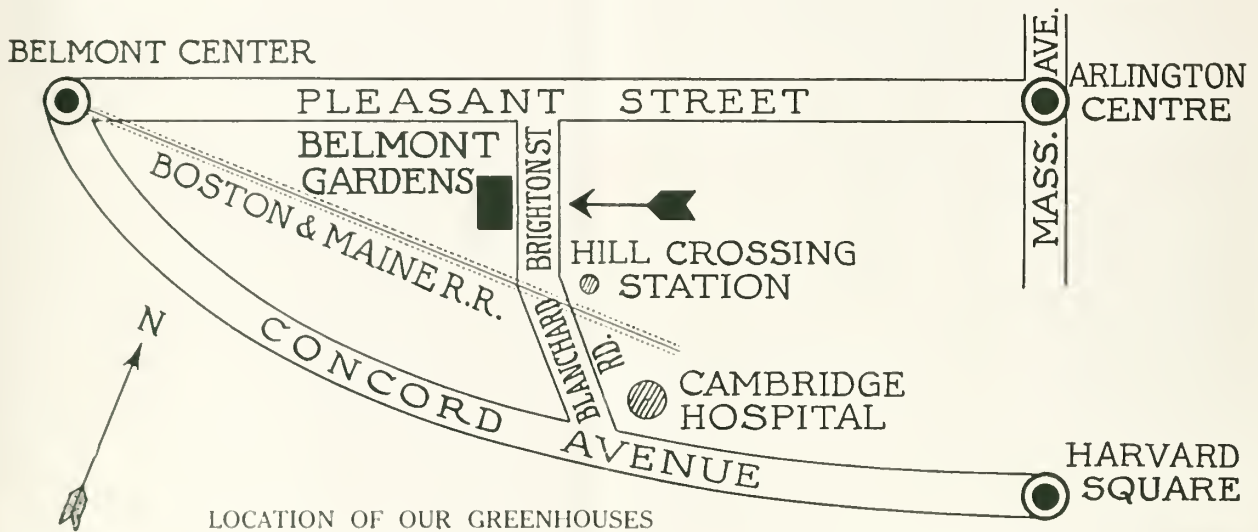
Specialties
 ◆
 ROSES
 GARDENIAS
 GARDEN
 PLANTS
 ◆
 ARTISTIC
 FLORAL
 ARRANGEMENTS

159 BRIGHTON STREET : BELMONT, MASS.

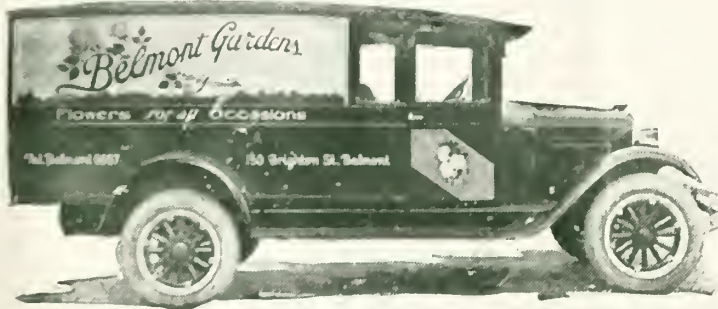
To Our Friends and Patrons



THE list of plants offered to you this year has been carefully selected. We have tried to stock the things that are worthy of your consideration. This is governed by suggestions from our customers and based on our knowledge of plants that will make your garden more beautiful. We do not pretend to carry a full line of plants and flowers but assure our customers that each year we plan to add only the things that will grow successfully in this climate. Our method of selling spring plants from pots has proven to be a big factor in building our growing business. We try to give our customers the best service possible and thank all those who have so many times sent us expressions of appreciation in regard to their business transactions with us. Visitors are always welcome and we invite you to come and pick out the plants you want for your garden.



TERMS— All listed prices net, no cash discount. We are glad to open charge accounts but must have references from those we have not previously dealt with. All accounts must be paid within 30 days.



Address all Correspondence to

BELMONT GARDENS, 159 Brighton Street, Belmont, Mass.

Packing Charges

A charge for packing is made on all plants or cuttings shipped by express or parcel post. Add 10 per cent of amount of order for this service.

Free Local Delivery

On distant points, goods will be sent express collect. We do not pay express charges. Add 10 per cent packing charge on all orders to be sent by Parcel Post or Express.

We give no warranty, express or implied, as to the description, quality, productiveness, or any other matter, of any plants, cuttings, bulbs, or nursery stock, and we will not be responsible for the results.

BELMONT GARDENS.



CUT FLOWERS FOR EVERY OCCASION
ROSE BUSHES AND SPRING PLANTS

FRESH CUT ROSES

FREE DELIVERY FROM OUR GREENHOUSES.

(Telephone: Belmont 0957-0958)



24-inch
\$4.50 per doz.

21-inch
\$4 per doz.

18-inch
\$3.50 per doz.

15-inch
\$3 per doz.

12-inch
\$2.50 per doz.

9-inch
\$2 per doz.

PRICES ARE FROM APRIL 6 TO MAY 30



Fresh Cut Gardenias

Furnished for every occasion, including weddings, luncheons, etc. Corsages made to order with suitable ribbon. Potted Gardenia plants always on sale. For prices, call Belmont 0957-0958.

ARTISTIC FUNERAL DESIGNS
MADE TO ORDER

SEASONAL POTTED PLANTS
ALWAYS ON SALE

As specialists in the art of expressing sentiment, we offer you the advantage of our long experience. We offer, too, a finer quality of flowers and plants for the sick-room, weddings, in memoriam, for the debutante and for the home.

Flowers in Memoriam

Flowers sent for the expression of sympathy demand artistic arrangement. In addition to this they must be as fresh as possible in order to assure a long life. Due to the general excellence of our work and the quality of our flowers, this department of our business has increased very extensively. Only the freshest flowers are used, arranged in unusual and artistic designs.



Casket cover of Roses and Chrysanthemums



Wreath of Roses, Lilies-of-the-Valley, and Orchids

Flowers for the Bride

We specialize in flower arrangements for weddings. Bouquets for the bride and attendants are offered in all seasonable flowers, arranged in artistic and modern design. A personal service is always available to help in the selection of flowers to be used. Estimates on church and home decorations submitted upon request, at reasonable prices.



Extra-Large Hardy Hybrid Tea Roses

Templar. This is a beautiful red Hybrid Tea Rose grown extensively for our retail cut-flower business, and it will bloom continually throughout the summer. The habit of the plant is strong and healthy, color is bright and cheerful, and flowers are very fragrant.

Briarcliff. A Hybrid Tea of wonderful blooming qualities. It is as free a bloomer as any Tea Rose and blooms all the time. Almost thornless. Wonderfully strong shoots 4 feet or more in length, each producing a magnificent bloom, often measuring 6 inches across the open flower; color a deep peach-pink, deepening into a glowing pink—a perfect color.

Templar and Briarcliff, Not Potted, 50 cts. each, \$1 for 3



Hugonis

This "Golden Rose of China" is ruggedly hardy everywhere in America. It needs neither protection nor pruning, save in the occasional cutting out of the older shoots. Each spring the previous year's growth of graceful maroon wands will be laden with curving branches of golden loveliness. Should be planted as a specimen, or grouped in a planting of shrubbery—also makes a fine flowering hedge. Do not plant it among Roses as it is too vigorous in growth to fit in such a planting.

\$1 each, \$10 per doz. Established in Pots

Ramblers—Hardy Climbing Roses

AMERICAN PILLAR. The bright pink flowers are produced in profusion, fairly covering the bush. It is a vigorous grower, clothed in lively green from earliest spring until late in the fall. Red berries, which are highly ornamental, appear in the fall.

CLIMBING AMERICAN BEAUTY. While its name is somewhat misleading, it is one of the best climbing Roses. A strong, healthy, vigorous grower, it frequently makes shoots from 10 to 12 feet long, and good-sized flowers for a climbing Rose that blooms so freely. Color rich rosy crimson, of splendid form and good substance.

DR. W. VAN FLEET. A charming, semi-double climber of vigorous growth with dark, glossy foliage. The long, pointed buds of dainty flesh-pink are borne on stems 12 to 18 inches long and are exquisite as cut-flowers.

EMILY GRAY. Doubtless the best yellow Rambler yet introduced. The large, semi-double blooms are pure golden yellow, produced in huge clusters on long stems ideal for cutting. The foliage is deep, glossy green, quite impervious to diseases and insects, and the plant is of strong, rapid growth and has proved unusually hardy.

MARY WALLACE. Hardy climber or pillar Rose, making a fine, strong, self-supporting plant 6 to 8 feet high, with large, glossy foliage. It blooms with great freedom in spring and bears a considerable number of fine buds in summer and fall. Flowers very large, usually exceeding 4 inches across, well-formed, semi-double, of a bright clear rose-pink with salmon base to the petals. Hardy in any location.

PAUL'S SCARLET CLIMBER. Vivid scarlet, shaded slightly crimson—a most pleasing and striking color. Makes a brilliant display for a long time in the garden. The petals do not fade like many climbing Roses, but retain their bright color and remain in bloom for from two to four weeks.

SILVER MOON. Different from all other Roses, with beautiful, semi-double flowers 4½ inches and over in diameter. They are pure white, with petals of great substance, beautifully cupped, forming a clematis-like flower.

The Above Plants Are All Potted Ready to Transplant into Your Garden. \$1 each

Talisman. This Rose, perhaps, needs no description as it is probably the most popular Rose sold in our retail department. It is a golden yellow, stained with coppery red and rose on the inside of the petals. The plants are vigorous and healthy outdoors. It is usually classified as a burnt-orange in color. We highly recommend this variety for planting in your garden.

Not potted, 75c. ea., \$7.50 per doz.

President Herbert Hoover.

A dazzling combination of cerise-pink, flame, scarlet, and golden yellow. The long-pointed buds open to large, perfectly formed, fragrant flowers on strong, rigid, stems. See front cover.

Well-established plants grown in pots ready to transplant into your garden.

\$2 each

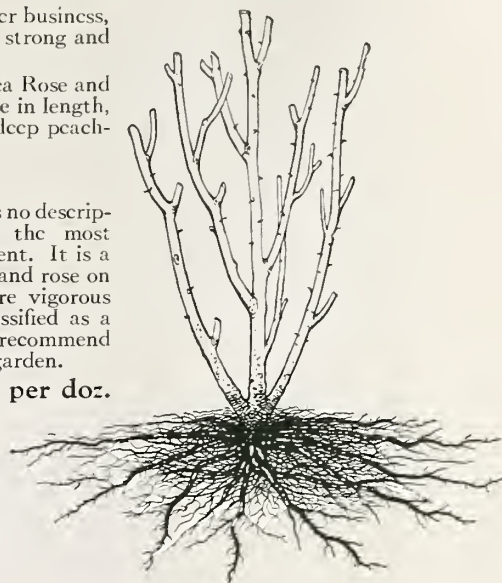
HUGONIS "Golden Rose of China"

An altogether different shrub, bearing no resemblance to any American species or wild Rose, this Chinese native is a notable contribution to American gardens. Every branch of the previous year's growth is, in late April or early May, closely set on both sides to the very tip with exquisitely beautiful, single, clear yellow flowers, almost concealing the foliage. Flowers are truly yellow, not primrose or straw-color.

The long sprays make Hugonis not only a beautiful shrub, to be planted, if one prefers, with other shrubs, but when cut are charming as table decorations, its crepe-like blooms harmonizing well with snowy linen and silver.

It makes a symmetrical bush about 6 feet wide and high when matured. The beautiful reddish maroon growths spring from the roots and are in themselves most attractive. In late fall the foliage turns to a pleasing purple.

It needs neither protection nor pruning, save in the occasional cutting out of the older shoots. Each spring the previous year's growth of graceful maroon wands will be laden with curving branches of golden loveliness.



American Pillar Roses

We Offer the Best Four Hardy Lilies for Outdoor Culture

Candidum. (Madonna or Annunciation Lily.) One of our loveliest and best-known hardy Lilies and the first of all to bloom in the spring. Glistening white with yellow stamens, delightfully fragrant, too, it is a gem in itself, and when grouped with tall blue larkspur it is very, very effective. Choice bulbs of the north of France type so eagerly sought by flower-lovers. For immediate planting. 75 cts. each, \$7.50 per doz.

Regale (*myriophyllum*). This variety from western China is admittedly one of the most beautiful garden Lilies yet introduced. It grows 3 to 5 feet high, blooms outdoors in July, is perfectly hardy, flourishes under very varied conditions. The large, trumpet-shaped, delicately scented flowers, which are produced freely, are ivory-

white, shaded pink, tinged with canary-yellow at the base of the petals. 75 cts. each, \$7.50 per doz.

Speciosum magnificum. The large flowers are of magnificent form, ivory-white, suffused rosy crimson. Extra-large flowering bulbs, 50 cts. each, \$5 per doz.

Auratum. (Golden-banded Japan Lily.) Undoubtedly one of the finest. Its large, graceful, fragrant flowers from July to September are composed of six petals of a delicate ivory-white color, thickly studded with chocolate-crimson spots, and striped golden yellow. Height 3 to 5 feet. 50 cts. each, \$5 per doz.

All the above Lilies are grown in large-sized pots, ready to transplant to your garden

Miscellaneous Plants

Bellis

★ **Perennis** (English Daisy). A favorite, old-fashioned perennial that will live over winter if given a little protection. The small, very double flowers are white and pink, borne in profusion in May and June on plants 5 inches high. 50 cts. per doz., \$3.50 per 100.

Buddleia

Davidi magnifica (Butterfly Bush; Summer Lilac). One of the most desirable summer-flowering shrubs, beginning to bloom in July and continuing until cut down by severe frost. The flowers are a pleasing shade of violet-mauve, and are borne in dense, cylindrical spikes from 12 to 15 inches long and 3 inches in diameter. It succeeds anywhere and flowers freely the first season. First-size, potted plants, 50 cts. each; extra-large, third-season plants, 75 cts. each.

Daphne

Cneorum (Garland Flower). A beautiful, low-growing evergreen of trailing habit, covered from May to July with garlands of deliciously fragrant, rose-pink flowers. Grows about a foot tall, with fine, light green foliage. Ideal for rockeries and shrub borders. Fine, bushy plants, \$1.25 each.

Dahlias

Assorted Colors. An unusual collection of the best Dahlia tubers in the following colors: White, Pink, Red, Purple, Yellow, Lavender, Maroon, and Variegated. \$1.50 per doz.

Dicentra (Dielvtra)

Spectabilis (Bleeding-heart). The graceful, heart-shaped, pink flowers of this old-time favorite in April and May, are one of the choicest memories of old-fashioned gardens. They are easily cultivated in borders and wild gardens, and are especially valuable for planting in shady spots, growing 1 to 2 feet high. Our clumps are very large. \$1 each.

Hardy Ostrich Fern

Palm of the North

This is the most beautiful of all the hardy Ferns and absolutely hardy. Growing in the deepest shade, it is just the thing to plant in that shady place on your home grounds where neither grass nor flowers will do well. It grows taller and faster than any other hardy Fern. 35c. each.

Gardenias

We specialize in growing these wonderfully fragrant flowers and can supply cut blooms in any quantity and flowering plants in pots. We have both Gardenias and Roses for special occasions, and will quote prices on application.

Gladiolus

We have a fine selection of Gladiolus in a wide variation of colors in the best varieties. They are very valuable for summer cut-flowers and of easy cultivation. Box of 20 assorted colors, \$1.

Gypsophila

Bristol Fairy. An improved variety of Baby's Breath, bearing a profusion of larger, double flowers, which transform the entire plant into a mass of white. Best of all, it blooms from June till frost, and makes a wonderful cut-flower with other garden flowers. Strong, grafted roots (potted), 75 cts. and \$1 each.

Hydrangea

Paniculata grandiflora. The flowers, in dense, pyramidal panicles, are white but gradually change to rose color. Fine, bushy plants, 75 cts. each.

Arborescens. A low, broad bush, with large heads of pure white flowers in July and August. Prune hard in spring; flowers are borne on new growth. 3 to 4-ft. bushy plants, 75 cts. each.

German Iris

Iris Germanica

Kharput. Deep, rich purple.
Mme. Chereau. White, with blue edge.
Pallida Dalmatica. Soft lavender.
Queen of May. Orchid-pink.
Rhein Nixe. White.
Yellow Queen. Yellow.

Japanese Iris

Iris Kaempferi

Extends the Iris season well into July, as it blooms about one month after the German Iris. The flowers are truly brilliant, 6 to 8 inches across, and the plants thrive in any good, mellow loam and are particularly adapted for naturalizing along streams and ponds.

Kumo-no-obi. Dark blue.
Geisho-Ui. Red.
Hannibal. Porcelain, veined rose-purple, rose-purple center; three petals.
Laevigata. Dark purple.

Any of the above Irises, potted plants, 2 or more tubers, 35 cts. each, \$3.50 per doz.

Siberian Iris

Iris sibirica

These are grassy-leaved Irises in shades of blue, blooming just at the close of the Bearded Iris season. Valuable both for cutting and garden decoration. Potted plants, 35 cts. each, \$3.50 per doz.

Myosotis

★ **Alpestris** (Forget-me-not). Produces a profusion of its dainty little light blue flowers during May and June. 50 cts. per doz.

Pansies

★ **Selected Strain.** Strong plants with extra-large flowers in a wide variation of colors. 50 cts. per doz., \$3.50 per 100.

Peonies

All the Peonies mentioned below are potted, ready to plant in April or May, and have 3 to 5 eyes and plenty of roots.

Edulis Superba. Early. Large, loose flowers of bright, light pink.

Felix Crousse. Large, globular flowers of rich, brilliant ruby-red.

Festiva maxima. Pure white.

Any of the above Peonies, \$1 each, \$5 for 6

Privet

California. Rapid, vigorous grower, with clean, glossy foliage on stiff, upright branches. Will grow in shade under big trees. Best for a quick, inexpensive hedge. Plant a foot apart. 18 to 24-in. plants, \$1 per doz., \$8 per 100.

Rugosa Roses

Wichuraiana. The Wild Rose from Korea, which is the ancestor of most climbers. A fine ground-cover with glossy leaves and clusters of starry white flowers in midsummer and a profusion of red fruits late in the season.

Pink Grootendorst. This charming new Rose has the true Rugosa growth and large, hard, glossy foliage which is never troubled by insects or disease. It blooms steadily from June until frost. The small, fringed flowers, borne in clusters, are an extremely fine shade of soft shell-pink. A splendid hedging Rose for massing.

F. J. Grootendorst. A cross of the red *R. rugosa rubra* by the Crimson Baby Rambler, with Rugosa growth and foliage and small, bright crimson, fringed flowers of the Baby Rambler type, produced in clusters throughout the season.

Plants established in pots, \$1 each

The Plants on this page that are marked with a (★) are good Rock-Garden Varieties

Hardy Perennial Plants

All Perennial Plants offered for sale are second-season plants established in pots full of roots. This gives the buyer a great advantage in securing plants that will grow and produce without a check. Our business has been built upon this method of growing perennials, and when comparing the old method of digging and replanting perennials when a pot is not used, it is easily seen what a great advantage is gained by confining all the roots in a pot rather than handling plants that have been dug and reset with the roots exposed.

Although the cost is much greater in growing plants by this method, no extra charge is made when pricing our plants. We recommend planting all Perennial Plants early—any time after April 1.

Price of all plants 30 cts. each, \$3 per dozen

Achillea

Ptarmica, The Pearl (Sneezewort). One of the best hardy white perennials. It grows about 2 feet high and is covered with heads of purest white, double flowers from spring to frost.

Aconitum

Napellus (Aconite). This is the finest Aconitum and produces, during July, deep blue flowers on strong, bushy plants 3 feet high. Invaluable for planting under trees or in shady or semi-shady positions.

Alyssum

***Saxatile compactum** (Dwarf Golden Tuft). An indispensable plant for the rockery or border, growing 1 foot high and producing, in May, masses of broad, flat heads of bright yellow flowers.

Anchusa

Italica, Dropmore. A fine, large, hardy herbaceous plant 4 to 5 feet high, and a great improvement on the type, the beautiful forget-me-not-like flowers being much larger, of a lovely gentian blue, and produced in long, loose sprays. Invaluable for the hardy border, as flowers are produced during the entire season and until late in the fall.

Anemone

***De Caen** (Japanese Windflower). A beautiful, single, poppy-flowered Anemone with large blooms in a wide range of bright colors, growing about 10 inches high and blooming especially early.

Aquilegia

Long-spurred Hybrids (Mrs. Scott Elliot's Strain). The finest of the Columbines, producing large flowers in a variety of delightful colors. They grow 2½ feet high. **Mixed.**

Arabis

***Alpina** (Alpine Rock Cress). A hardy perennial, 6 to 9 inches high, and one of the earliest and prettiest spring flowers. The spreading tufts are covered with a sheet of pure white flowers as soon as the snow disappears. Unequaled for rockeries or edging, withstanding drought, and always neat.

Armeria

***Formosa** (False Thrift). A very pretty hardy perennial edging plant, 1 foot high, bearing rosy pink flowers.

Aster

Hardy Aster; Michaelmas Daisy

These are among the showiest of our late-flowering plants and the best for the perennial garden. They grow 3½ feet high and bear an abundance of blooms in a great variety of attractive colors.

Asclepias

Tuberosa (Butterfly Weed). Grows 2½ feet high and has large heads of very showy, brilliant orange flowers in July and August.

Campanula

Medium (Canterbury Bells; Bellflower). This lovely flower is a great favorite in New England gardens and is very valuable for cut-flowers. It is of easiest culture, growing in either sunny or partly shaded positions, reaching a height of 2 to 2½ feet, and blooming in June and July. Sold in separate colors—Rose, Lavender, White, and Blue. Our strain is imported from England and is, no doubt, the best of all the Campanulas.

Persicifolia, Big Bell. The lovely blue flowers, nearly double the size of the old variety, are wide open, and the whole plant is of a fine round form. It is very beautiful and excellent as a pot plant as well as for cutting.

Centaurea

Montana (Perennial Cornflower). Desirable hardy plants with showy, bright blue, thistle-like flowers from July to September. Grows 2 to 3 feet high.

Cheiranthus

***Allioni** (Siberian Wallflower). Excellent dwarf perennial for rockery or margin of herbaceous border. Brilliant, fiery orange flowers are borne on stems about a foot long in spring and all summer, if seed-pods are removed.

Chelone

Barbata Torreyi (Shell Flower). Stately, handsome perennials, growing about 2 feet high and bearing numerous spikes of large, scarlet flower-heads during the summer and fall.

Choice Garden Chrysanthemums

The most glorious flower of the autumn garden, filling it with colorful bloom through October and November when other plants have been destroyed by frost. The following varieties grow 1½ to 4 feet tall.

Boston. Tall-growing, free-flowering, and well-branched heads. Glowing bronzy orange blossoms, 1½ inches across.

Field of Snow. Pure white. Button.

Fred Peele. A very pretty yellow. Button.

Golden Queen. Large; shaggy yellow.

Old Homestead. One of the best pinks.

President. A very pretty bronze. Button.

Coreopsis

Lanceolata grandiflora. This beautiful, showy variety begins to flower early in June, continuing one mass of golden yellow till killed back by frost. The flowers are borne on long, graceful stems, making them invaluable for cutting. Grows 1 foot high.

Daisy

Elder. A new white Shasta Daisy of great size. It multiplies freely and blooms early.

Delphinium

Perennial Larkspur

Belladonna. A continuous bloomer with beautiful turquoise-blue flowers on spikes of good size 2 feet high. A very popular variety used by all florists.

Bellamosa. Dark blue. Same habit as Belladonna.

Hybrids, Choice Mixed. Many lovely colors.

Dianthus

Barbatus (Sweet William). An old favorite, bearing sweet, clove-scented flowers in the greatest profusion during May and June. They are indispensable for the edge of the hardy border and for cutting, coming in a variety of colors and combinations from white to darkest red.

***Plumarius.** The Pheasant-Eye, Grass, or Clove Pink of old-fashioned gardens. One of the most pleasing of our low-growing, hardy perennials, reaching a height of 8 to 10 inches, with grass-like foliage and a profusion of white or light pink flowers with crimson centers, distinctly clove-scented, from April to August. On deep, moist soil they will live and increase from year to year with almost no care.



Alyssum saxatile compactum

The Plants on this page that are marked with a (*) are good Rock-Garden Varieties

Hardy Perennial Plants

Price of all plants 30 cts. each, \$3 per dozen



Hollyhocks

Dictamnus

Albus (Gas Plant; Burning Bush). An old garden favorite with white flowers that have a strong lemon scent and will sometimes give a flash of light on a sultry summer evening when a lighted match is held near them—hence the name. Grows 3 feet high and succeeds well in partial shade or full sun. Should not be moved after once established.

Digitalis · Foxglove

Gloxiniæflora (Gloxinia-flowered Foxglove). Handsome, highly ornamental, hardy plants of stately growth, succeeding under almost all conditions, and with but little attention will give a wealth of flowers during June and July. They are now used extensively with good effect for naturalizing in shrubberies, the edge of woods, and other half-shady places. Height 3 to 5 feet. Pink, Lavender, or White.

Echinops

Ritro (Steel Globe Thistle). Striking, hardy perennial plants, with handsome, silvery, thistle-like foliage and fine steel-blue flowers in round heads, which can be used for cutting. Excellent for the back of the hardy border among other tall plants, as it reaches a height of 3 to 5 feet.

Funkia

★ **Undulata media variegata** (Plantain Lily). A very handsome variety with leaves widely edged and striped white, and lovely purplish mauve flowers in July and August. As they thrive in almost any position, they are invaluable for beds, borders, rock-work, and marshy ground. Height 1½ to 2 feet.

Geum

★ **Coccineum, Mrs. J. Bradshaw.** A fine herbaceous plant, 1½ feet high, well adapted for the hardy border. It produces an abundance of extremely large, double, very bright scarlet flowers that are excellent for cutting.

Gaillardia

Grandiflora (Blanket Flower). One of the showiest hardy plants, growing about 2 feet high and succeeding in any soil in a sunny position. The large flowers which begin to appear in June, and continue all season, are of gorgeous coloring. The center is dark red-brown, while the petals are marked with rings of brilliant crimson, orange, and vermilion, and often a combination of all in one flower. Excellent for cutting.

Gypsophila

Paniculata (Baby's Breath). The favorite, old-fashioned, single-flowering variety, a plant possessing a grace not found in any other perennial. When in bloom, during July and August, it forms a symmetrical mass 2 to 3 feet in height, and as much through, of minute, pure white flowers, forming a beautiful gauze-like appearance. When cut it is exquisite in combination with other flowers. Will thrive in any soil in a sunny position.

Bristol Fairy. See Miscellaneous Plants.

Hemerocallis

Thunbergi (Day Lily). Sweet-scented, clear yellow, lily-like flowers borne in clusters. Slightly taller than other varieties, averaging 3 to 4 feet, and blooms during July and August. A good cut-flower for midsummer.

Hibiscus

Mallow Marvels (Giant-flowering Hibiscus). A wonderfully improved form of our native Marshmallow or Rosemallow, in which flowers of enormous size (frequently 10 to 12 inches in diameter) have been developed, in colorings that comprise rich dark red, soft mallow-pink and pure white. The plants grow from 5 to 8 feet high and are very floriferous, blooming from early in July until late in autumn, and are perfectly hardy. We offer strong two-year-old roots in mixed colors.

Superb Hollyhocks

Stately, majestic, hardy plants, from 6 to 8 feet high, which are a necessary part of every old-fashioned garden, and should also find a place interspersed with shrubbery, as clumps on the lawn, or in the mixed border where their colossal spikes of bloom produce bold, showy effects which cannot be secured with any other flowering plant. A great favorite in New England gardens.

The varieties offered are the finest obtainable. We specialize in these plants and great care has been given to produce the finest double-flowering varieties in existence.

Chater's Double, Scarlet, Rose, Maroon, Yellow, Salmon, and White.

Honesty (Lunaria)

Biennis. Hardy biennial, thriving almost anywhere, but especially useful in shady, damp places. The purple, crimson or white flowers are followed by silvery transparent seed-pods, prized for winter bouquets. Height, 2 feet. **Mixed colors.**

Iberis

★ **Sempervirens** (Hardy Candytuft). Among the many species of plants particularly suitable for dwarf beds, borders, and the rockery, none surpass the Hardy Candytufts in making a rich showing during their flowering season. The foliage also is quite ornamental, while the flowers, climbing and rambling in all directions, lend a picturesque touch wherever the plants are used. Bears pure white flowers in the spring, and the leaves are dark glossy green.

Lathyrus

Latifolius (Hardy Everlasting Pea). One of the best and most desirable flowering hardy climbing plants, attractive both in flower and foliage. It grows to a height of 8 to 10 feet, producing clusters of large flowers the entire summer. Fine for cutting, lasting well. **Mixed colors.**

Liatriis

Pycnostachya (Blazing Star; Gay-feather). Bears great rocket-like spikes of pale rosy purple flowers over a long period—from August to October. A good background plant, growing 3 to 4 feet high.

Lily-of-the-Valley

★ We have these valuable plants in pots. The clumps are potted during the early fall and offered for sale the following spring, the advantage being that all the roots can be transplanted with the plant in or out of season, thus insuring success. The plants offered are all budded and will flower the first season. Very valuable for shady places and for cemetery use. Blooms early and multiplies rapidly.

Linum

★ **Perenne** (Flax). A desirable plant for the border or rockery, growing 1½ feet high, with light, graceful foliage and large blue flowers all summer.



Gypsophila paniculata

The Plants on this page that are marked with a (★) are good Rock-Garden Varieties

Hardy Perennial Plants

Price of all plants 30 cts. each, \$3 per dozen

Lobelia

Cardinalis (Cardinal Flower). Handsome border plants with rich, fiery cardinal flowers. The strong plants often produce 10 to 18 spikes, 2 to 2½ feet long. They thrive in any ordinary garden soil but prefer a moist, deep loam where they will not suffer from drought. Few plants are more effective at their season of bloom, which extends from early in August till late in September.

Lupinus

Polyphyllus (Lupine). Very effective plants that produce large spikes of flowers in May and June. They require only well-prepared garden soil, preferably in a semi-shady location. Lupines are becoming very popular and are in great demand. Height 3 feet. Rose, White, or Blue.

Monarda

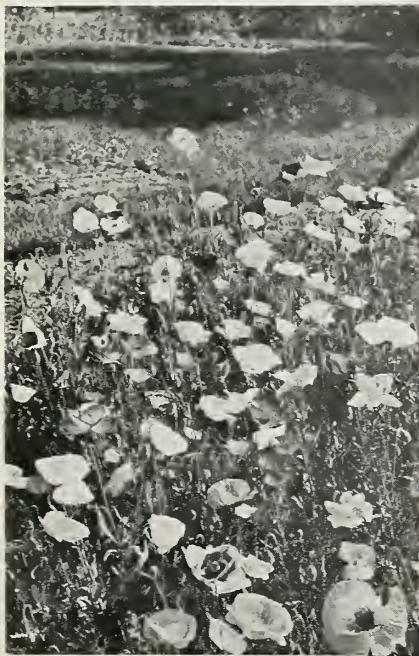
Didyma, Cambridge Scarlet (Oswego Tea). Showy plants 2 to 3 feet high, succeeding in any soil or position, with aromatic foliage, and producing their brilliant crimson-scarlet flowers during July and August.

Trailing Myrtle • Vinca

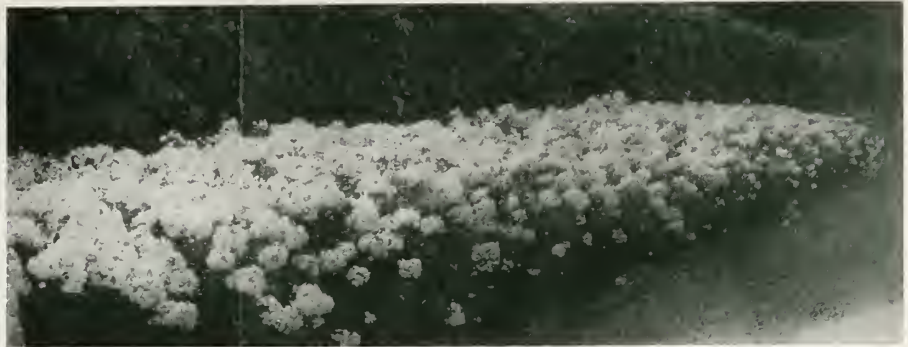
***Minor** (Periwinkle). An excellent dwarf evergreen trailing plant that is used extensively for planting in shady places and for cemetery use. It makes a good cover and is always green. We give these plants the same method that is used in growing the lily-of-the-valley and have these in pots so that they can be transplanted at any time.

Physostegia

Virginiana (Texas Heath). Fine hardy perennial, resembling a giant heather, with beautiful pink flowers through the summer; fine for cutting. Height 2 feet.



Oriental Poppies



Planting of Hardy Phlox

Papaver • Poppy

***Nudicaule** (Iceland Poppy). A plant of neat habit, forming a tuft of bright green, fern-like foliage, from which spring, throughout the entire season, a profusion of slender, leafless stems 1 foot high, each graced with charming cup-shaped flowers, in many attractive shades of yellow, orange and white.

Orientele (Oriental Poppy). These are the regal representatives of this popular genus, growing 3 to 3½ feet high, and far surpassing in splendor of bloom the annual and biennial kinds. For a gorgeous display of rich and brilliant coloring nothing equals them during their period of flowering in May and June, and whether planted singly or in masses their large flowers and freedom of bloom render them conspicuous in any position. They are of the easiest culture and almost any kind of soil suits them, but they do best in deep, rich loam. After blooming the foliage dies away and the plant disappears.

Queen Alexandra. Bright rosy salmon.

Scarlet Prince. Scarlet.

Mrs. Perry. Orange-apricot.

Rembrandt. Orange-scarlet.

Salmon Queen. Salmon.

Pachysandra

***Terminalis** (Japanese Spurge). An evergreen ground-cover unsurpassed for its adaptability to all situations and conditions. Is most attractive as a border for walks and drives, does well on steep slopes in sun or shade, and is especially recommended for planting under shrubs and trees of any kind. The only plant of its kind that will thrive under pine trees. It attains a height of about 8 inches and should be planted 6 inches apart each way for best results. Thick, lustrous, dark green leaves with small spikes of light-colored inconspicuous flowers during May and June.

Physalis

Francheti (Improved Japanese Lantern Plant). A wonderfully decorative perennial plant bearing a profusion of orange-vermilion fruit-pods that make lovely winter decorations when dried. They are of very easy culture, requiring no special care, and if planted in spring will produce an abundance of gaily colored lanterns in September, and each year thereafter.

Phlox

The Perennial Phlox is a universal favorite and one of the most showy of the garden plants. Each stem grows 2 to 3 feet high, according to variety, and is crowned with large trusses of blooms of varied colors—red, purple, white, salmon, and parti-colored.

It thrives in a cool, moist, but well-drained fertile loam, and blooms in early summer, but can be delayed until late summer or fall when flowers are most needed in the garden, by pinching out the tops of the growing shoots. Our strong, two-year-old plants, that will give satisfactory growth and bloom the same year they are planted, should not be compared with the small plants which do not give an abundance of bloom the first year. The following varieties are highly recommended.

Beacon. A very pleasing brilliant cherry-red.

Rosenberg. Carmine-violet.

Thor. Deep salmon-pink, suffused with a scarlet glow, somewhat lighter in mass effect than General Chanzy.

Rijnstroom. An improved form of the popular Pantheon. Fine for massing. Of a Paul Neyron rose-color. Height 2½ feet.

Mrs. Jenkins. The most popular white variety so far introduced. Splendid for mass planting. Blooms early and profusely.

***Subulata** (Moss Pink). An evergreen creeping plant, excellent for edging the border or in the rock-garden. Produces masses of bloom in April and May, with moss-like foliage that is invaluable as a ground-cover.

Rose-Pink.

Pure White.

Bright Pink, with Fiery Red Eye.

***Divaricata Laphami** (Blue Phlox). A dwarf native species with pale blue flowers borne on long, graceful stems and having a most delightful fragrance. Combines well with any color. Splendid for rockeries or borders, growing 1 foot high. Blooms May and June.

Polemonium

Cæruleum (Jacob's Ladder). Popular, hardy perennial border plant, 2 feet high, with bell-shaped flowers, nearly 1 inch across from May to July. **Mixed colors.**

The Plants on this page that are marked with a (★) are good Rock-Garden Varieties

Hardy Perennial Plants

Price of all plants 30 cts. each, \$3 per dozen



Sedum spectabile

Pvrehrum

Coccineum (Persian or Painted Daisy). One of the best perennials in our list. It is perfectly hardy, will thrive in any garden soil and in any situation except in dense shade under trees. As a cut-flower it is unsurpassed in daintiness and keeping qualities. Blooms in May and June, and if cut back after first bloom will give flowers throughout the summer and early fall. Grows about 1½ to 2 feet high. Single and Double, Mixed Colors.

Ranunculus

***Acris fl.-pl.** (Double Buttercup). Well-known, double yellow Buttercup, effective either as a cut-flower or grouped in the hardy border.

Rudbeckia

Laciniata, Golden Glow. Indispensable plants for the hardy border as they grow and thrive anywhere, giving a wealth of bloom that is excellent for cutting. Attains a height of 5 to 6 feet, and produces masses of double, golden yellow cactus dahlia-like flowers from July to September.

Salvia

Azurea (Meadow Sage). Grows 3 to 4 feet high, producing in August and September, pretty sky-blue flowers in the greatest profusion.

Saponaria

***Ocymoides** (Rock Soapwort). A very useful, hardy plant for the rockery or the border, producing from May to August, masses of attractive small, bright rose flowers. Height 8 inches.

Scabiosa

Caucasica (Blue Bonnet). Handsome border plants, succeeding in any ordinary soil if well drained and in a sunny location. They should be grown in every garden where cut-flowers are wanted as they last a long time when picked and placed in water. The flowers are a charming soft shade of lavender, and are borne from June until September. Height 1½ to 2 feet.

Sedum

Spectabile. One of the prettiest erect-growing species, attaining a height of 1½ feet, with broad, light green foliage and immense heads of handsome, showy, rose-colored flowers during late summer and fall. Indispensable as a late fall-blooming plant.

***Sarmentosum.** Hardy, fast-growing trailer, excellent for carpeting bulbs and covering dry, sandy banks, making them as green as a velvety lawn. Yellow flowers.

Spiraea (Astilbe)

Some of the most beautiful plants grown, and of easy culture. The graceful, feathery blooms stand above the bright green, fern-like, abundant foliage. Perfectly hardy.

Brunhilde. Tall; large, creamy white flowers on long stems. Good cut-flower variety. June till August.

Kriemhilde. Salmon-rose; very attractive. Probably the finest of the late Spireas.

Statice

***Latifolia** (Sea Lavender). Splendid hardy perennial, useful in the border or rockery. Plants produce panicles of minute flowers all summer which can be dried and used for winter bouquets. Separate colors, White and Lavender.

Trollius - Globe Flower

***Europæus, Orange Globe.** A beautiful border plant, having handsome dark green foliage and many large showy orange flowers. They are well adapted for half-shady or sunny positions, flowering from May to July, and are fine for moist places and edges of water-gardens, also doing well in good garden soil which does not lack in moisture. Are perfectly hardy if given protection during the winter with a covering of leaves. The supply is very limited. Height 1½ feet.



Viola



Tritoma pfitzeri

Tritoma

Pfitzeri (Red-hot Poker). This perennial plant is in a class by itself for decorative work, showy window, basket-filling, etc. It blooms in August and September and its showy orange-scarlet spikes shade to salmon-rose at the edges. Plants must be well protected in winter.

Valeriana

Rubra, Mixed (Hardy Garden Heliotrope). This plant was greatly prized in old-fashioned hardy gardens for its strong heliotrope fragrance. Produces showy heads of rose-tinted white flowers during June and July.

Veronica

Longifolia subsessilis (Speedwell). Deep, rich blue flowers in dense, erect spikes a foot long and from 4 to 5 inches in circumference, from August to September. Grows 2 feet high.

Viola

We offer, this year, three varieties of this most valuable plant for your garden. Especially recommended as an edging plant and for rock-gardens.

***Apricot Queen.** A delightful shade of apricot that compels immediate attention and admiration. It is of compact growth, blooming freely from May to October. Prefers a sunny location.

***Jersey Gem.** Rich, deep violet in color and very fragrant. The plants possess the dwarf habit so much desired and are strong growers. The roots can be divided from time to time, so that one can increase the planting in the garden.

***White Perfection.** A sturdy white variety of Viola, mingling well in any rock-garden or border planting.

The Plants on this page that are marked with a (*) are good Rock-Garden Varieties

Hardy Climbing Plants

Ampelopsis

Veitchi (Boston or Japan Ivy). This vine is entirely hardy in the most exposed places, attaining a height of 20 to 30 feet in two to three years and clinging to stones, brick, or woodwork with the greatest tenacity. It forms a great protection to houses, as the leaves, overlapping each other like slates on a roof, effectually prevent rain from penetrating the walls. As a covering for dead trees, boundary walls, etc., it has no equal, and few vines have more attractively colored autumn foliage, for it becomes literally a blaze of red in varying shades. Large, pot-grown, 2-year plants, 75 cts. each.

Aristolochia

Sipho (Dutchman's Pipe Vine). A vigorous, rapid-growing, perfectly hardy vine bearing singular, brownish flowers resembling a pipe in shape. The flowers are of little value compared to its light green leaves, which are of very large size and retain their color from early spring to late fall. Strong plants, 75 cts. each.

Bignonia

Radicans (Trumpet Vine). An excellent vine for covering unsightly places, stumps, rock-work, or wherever a very hardy, showy flowering vine is desired. The dark red flowers, with orange throat, are large, attractive, and borne profusely. 50 cts. each.

Celastrus

Scandens (Bittersweet). The very attractive, orange-scarlet berries of this shrub of vine habit have become very popular the last few years for winter decoration. They should be cut about Thanksgiving and are excellent for use with everlastings such as Helichrysums, Japanese Lanterns, and Statice. Large, 3-year vines, 75 cts. each.

Euonymus

Radicans (Winter Creeper). This trailing Euonymus is particularly desirable for its dense evergreen foliage and extreme hardiness, some varieties, on account of this, taking the place of English ivy for wall-covering, others that of boxwood as edging plants. 50 cts. each.

Clematis

Paniculata (Japanese Clematis). A rapid-growing vine quickly covering trellises with a dense mass of handsome, compound, glossy green foliage and bearing, in late summer, such a profusion of pure white, fragrant, starry flowers that they quite hide the foliage. It is perfectly hardy and adapted to all soils. Large, pot-grown plants, 75 cts. each.

Lonicera

Japonica Halliana (Hall's Honeysuckle). A charming climber of rapid, dense growth, with oval, soft green, persistent foliage, and a constant succession of showy clusters of white and yellow flowers throughout the summer. Extra-large plants, 50 cts. each.

Wisteria

Sinensis (Chinese Wisteria). A well-known, hardy, perennial vine of luxuriant, rapid growth, bearing in spring immense panicles of fragrant, lavender-blue flowers in great profusion. Reaches a height of 75 feet. Extra-large, grafted plants, \$1 each.

Annuals

The following list of popular annuals are all greenhouse grown and established in pots. These plants are grown from the finest and best seeds that we can procure and are recommended as the best money can buy. We discard all inferior specimens and sell only strong, healthy plants that will grow. When using these plants in your garden, an early flowering season is enjoyed and it is far more satisfactory than the old method of planting seeds in the open border and awaiting results. We plant the seed during February and carry the plants at the proper temperature in our greenhouses to produce strong, healthy specimens that will yield a wealth of blooms during the long flowering season.

Ageratum, Perfection. Dwarf. Imperial blue.
Alyssum, Little Gem. White.
Aster, American Branching. Late. Mixed. **California Sunshine.** A distinct novelty. Mixed colors. **Queen of the Market.** Early. Mixed.
Calendula, Ball's Strain. Orange.
Candytuft. Pink, Red, and White.
Carnation, Chaubaud's. Mixed.
Celosia, Comb and Plume. Mixed colors.
Centaurea (Bachelor's Button). Double; deep blue.

Godetia, Sweetheart (Satin Flower). Mixed colors.
Cosmos, Double. Red and Pink.
Helichrysum (Straw Flowers). Mixed.
Lobelia, Crystal Palace Compacta. Blue.
Marigold, Double Dwarf French Legion of Honor. Mixed. **Mammoth African.** Mixed. **Signata pumila.** Single; orange-yellow.
Nicotiana, Sanderae Hybrids. Mixed.
Petunia, Balcony. Blue, Pink, and White. **Dwarf California Ruffled.** Mixed colors. **Star of California.** A

novelty having white star on background of blue.
Phlox Drummondii. Mixed.
Salpiglossis. Mixed colors.
Salvia, Bonfire.
Scabiosa. Mixed colors.
Snapdragon, Intermediate. White, Yellow, Pink, and Red.
Stock. White, Pink, and Lavender.
Verbena, Fireball. Fiery red, also mixed colors.
Zinnia, Giant Dahlia-flowered. Mixed.

Any of the above plants, established in small pots, 10 cts. each, \$1 per doz.

We also carry and sell a full line of selected Geraniums, Tuberous-rooted Begonias, Coltness Hybrid Dahlias, and miscellaneous bedding plants, in flower, from 4-inch pots. These should not be planted before June 1, owing to danger of frost in this climate.

Fertilizers, Etc.



A highly concentrated preparation of peat moss and cow manure. **Driconure** contains humus as well as plant-food, and is an ideal soil-conditioner for all kinds of plants. Especially recommended for lawns. As a top-dressing on gardens or lawns, one 50-lb. bag to 400 sq. ft. is recommended. **Driconure** is dry, sterile, and weedless, being a dehydrated material. Packed in 50-lb. bags (about 3 bus.), \$3 delivered locally. If called for, price will be \$2.50 per bag. Small bags (about 1 bus.), \$1.25 each.



Ideal for flower-garden use. The most eminent rose-growers of this country endorse Peat Moss most highly after use in their beds. A soil deeply dug and very liberally mixed with one part Peat Moss to three parts soil will be desirable. Later a heavy mulch spread on top of the ground will keep out weeds and conserve moisture, prevent a hard crust, require less attention and give best results. Use a heavy mulch for winter

protection and save the rose bushes. Large bale (about 200 lbs.) \$4. (Will spread 300 square feet 1 inch deep.)

Maplevale Leafmold checks excessive evaporation from the soil and thus prevents the tiny roots from dying. It is entirely free from weed seeds. Use one-third Leafmold and two-thirds loam for potting your house and greenhouse plants and you will be well repaid by the wonderful growth and dark green foliage. For all outdoor plants, this Leafmold is used the same as manure, digging in and around the roots of plants and shrubs. House-plant pkg. 60 cts., 1-bus. bag \$1.25, large bag \$2.75.

Finely Ground Bone-meal. A splendid general fertilizer for roses and all plants and flowers. Cow manure and bone-meal give all that plants ordinarily require. 5 lbs. 40 cts., 10 lbs. 75 cts., 25 lbs. \$1.25, 100 lbs. \$3.50.

Shredded Cow Manure. A coarse shredded Manure, dried and sterilized, and a splendid substitute for stable manure in gardens and greenhouses or wherever it is desirable to supply plant-food, humus, and organic matter. Especially valuable for composting, mulching, and top dressing. Splendid for roses, ferns, or where a cool, slow-acting manure is wanted. Bag (1/2 bus.) \$1, 100-lb. bag \$4, delivered locally; \$3.50 if called for.

POTTED HYBRID TEA ROSES

(ALL EVERBLOOMING VARIETIES)

These plants are all started with a potful of roots in a growing condition, thus insuring immediate results when transplanted to your garden.



Margaret McGredy



Mme. Jules Bouche



Betty Uprichard



Mrs. Aaron Ward



Duchess of Wellington



STARTED IN POTS



Talisman



Briarcliff



Francis Scott Key



Templar



Mme. Edouard Herriot



Souv. de Claudus Pernet



Radiance

BELMONT COLLECTION. Our selection of carefully chosen Hybrid Tea Roses, giving a wide range of color and beauty . . . These varieties are especially adapted to the New England climate.

\$1 each, \$10 per doz. Add 10 per cent packing charge on express orders