

Historic, Archive Document

Do not assume content reflects current scientific knowledge, policies, or practices.

62.47

Inclusive

LIBRARY
MISSOURI
MAY 1920

**CONDENSED WHOLESALE and RETAIL
PRICE LIST for FALL 1902, SPRING 1903**



Setting 30,000 Peach Buds per day in a field of over 800,000 Trees.

NEW HAVEN NURSERIES

NEW HAVEN, MISSOURI

Located 67 Miles West of St. Louis, on Main Line of the Missouri Pacific Railway
Established 1872 & Incorporated 1892 & Capital Stock \$30,000, Fully Paid

WE PAY THE FREIGHT on Conditions Noted

Terms, Conditions and Directions

TERMS—Invariably cash, unless otherwise agreed upon. All orders to be sent C. O. D. must be accompanied with one-fourth the amount in cash. Remit by Money Order, Registered Letter or Bank Draft.

It is important that you order early. For the benefit of customers who wish to order early, but who do not care to spare all of the money when the order is sent, we will accept such early orders if one-third of the amount is sent with order. We will reserve the stock for you. Balance to be sent when you order the stock shipped.

DIRECTIONS FOR ORDERING.—Write name and address plainly. Always state distinctly the sizes and grades of stock ordered as per the grades given in this List. When named varieties cannot be furnished, we reserve the right to substitute such varieties as will fill the season as near as possible, unless prohibited in the order. Persons unacquainted with the different varieties will generally get a much better selection by leaving the assortment to us. Keep a correct copy of the order, so that when the stock arrives, you will know exactly whether you get what you have ordered. If we make mistakes, they are accidental and we wish to right them.

FREE FREIGHT, FREE EXPRESS.—On all orders over \$15.00 accompanied by full remittance, we will prepay the Freight or Express charges to your R. R. Station if east of Denver, Colorado and El Paso, Tex.

THE PRICES are for the quantities named, but five, fifty and five hundred will be supplied at ten, hundred and thousand rates respectively.

PACKING.—All goods are packed free. Notwithstanding this fact, we use the utmost care and pack according to the distance and to our customers' best interest. Everything is labeled.

OUR GUARANTEE.—The fact that nurserymen, planters and fruit-growers of the country have ordered of us year after year, is as good a guarantee as can be given by any other nursery of thirty-one years' standing. But if any mistakes occur, we will cheerfully rectify them.

We use the greatest care possible to have our stock true to name, and should any prove not true, we stand ready to replace it free of charge or to refund the purchase money, but do not hold ourselves liable for any greater amount than the first cost of stock that may prove not true.

All our shipments of trees will be accompanied by **Certificate of Inspection** of Prof. J. M. Stedman, Entomologist. This is a guarantee to the buyer that our stock is free from all disease. Missouri-grown trees are the best. Good stock, true to name, sold direct to planter at reasonable prices is our aim.

OUR LOCATION is the very best for producing well ripened stock with splendid roots. Our facilities for prompt shipments are first-class and we have special low Express rates.

Remember that we pay the Freight or Express Charges on all orders amounting to over \$15.00 and guarantee safe arrival of shipments.

We solicit Correspondence and personal inspection of our stock, confident that it will compare favorably with the best.

New Haven Nurseries

(J. Bagby & Sons Co.)

New Haven, Mo.

Remarks on Varieties, Sizes, Etc.

We wish to say that the small size trees are strictly first-class and well rooted and by many will be preferred to the larger size.

VARIETIES.—So many ask, "What should I plant in my locality?" that we will here name a few of the popular and profitable sorts for general planting:

APPLES.—Ben Davis, Jonathan, Mam. Black Twig, Gano, York Imperial, Rome Beauty, Wine Sap, Grimes' Golden, Maiden Blush, Yellow Transparent. This is our Commercial List. Others would add perhaps, Wealthy, Ark. Black, Ingram, Mo. Pippin, Duchess Oldenburg, Etc. All of the above are good profitable sorts, both for home use and the market.

PEACHES.—If you want to market your fruit, avoid planting too many early sorts. Reeves, Queen, Carman, Family Favorite, Fitzgerald, Foster, Champion, Mixon Free, Stump, Elberta, Heath Cling, Miller Cling, Crosby, Capt. Ede, Gold Dust, Chair's Choice, Gold Medal, Salway, Golden Gate and Crawford's Late, are all profitable for market. Should early sorts be desired, Triumph, Alexander and Sneed are what you should plant. If for home use, plant general assortment, including above, for a succession, be sure to include Golden Gate, Queen and Carman. The peach tree should have the shoots and branches shortened every year or two. The land should be kept in a high state of cultivation.

PEARS.—The fact is more and more apparent that Kieffer and Garber will stay in the lead for profit. Duchess, Seckel, Bartlett, Jersey, etc., should also be in most orchards.

CHERRIES.—Early Richmond, Dyehouse, Montmorency, Wragg, Eng. Morello (sour), Gov. Wood, Elton and Sappington (sweet), do very well and are profitable. Try our new sweet variety—MAGANN.

PLUMS.—Wild Goose (native), Damson, Shipper's Pride, German Prune (European), Ogon, Abundance, Wickson, Red June and Burbank (Japanese), are all good bearers and are profitable. We consider the Abundance, Wickson, Red June and Burbank the best of the well-known Japanese sorts. Try some or all of the Japan sorts.

THINNING FRUIT.—When the trees are heavily laden, the fruit should be thinned when about one-third grown, else the fruit will be poor and the trees injured. The necessity for thinning was fully demonstrated during the dry summer of 1901.

WHOLE ROOT TREES.—The "Whole Root" schemes we can but compare in our mind to the working of Patent Medicine Men and Quacks. They try to scare you into buying their goods. Pear, Peach, Plum and Cherry trees are all grown on "whole roots." Our Apples are all on so-called whole roots, grafted and planted so that the cion also roots. Don't pay extra prices for "trade-marks." We give our customers the **very best**, and we don't ask two prices. A trial order will convince you.

NOTE.—That we offer heavy budded one year apple trees—budded above ground—on branched root stocks (whole roots). Our one-year buds are equal to two-year grafts, grown by many nurserymen.

We are growers of what we sell, having over 300 acres devoted exclusively to the nursery business. Many so-called nurserymen are simply jobbers in the trade, and cannot fill stock with the same certainty of its being true to name and free from disease.

To those who wish to know more about the quality of stock we grow, we can refer to such large planters as L. A. Goodman, Westport, Mo.; Hon. Richard Dalton, Saverton, Mo.; J. G. McNair, St. Louis, Mo.; G. N. Ratliff, Moberly, Mo.; C. G. Winn, Griggsville, Ill.; H. T. Mudd, St. Louis, Mo. These parties have bought and planted our trees in large quantities. Aggregate sales to above orchardists **over 100,000 trees.**

We pay the Freight on all orders amounting to over \$15.00, at prices in this list.



Apple Trees

Our apple are all grown on Missouri River upland, are well rooted, smooth, clean and well grown in every respect. **No better Trees can be found anywhere.** We offer also budded Trees, which are ideal. They are smooth and clean with splendid roots.

	Each.	10.	100.	1000.
1 year old, 2 to 4 feet.....	\$0.06	\$0.60	\$5.00	\$40.00
2 years, 3 to 4 feet, many well branched.....	.06	.60	5.00	45.00
2 years, 4 to 5 feet, well branched, first class10	1.00	8.00	75.00
2 years, 5 to 7 feet, extra select.....	.15	1.25	10.00	100.00
1 year, buds, 3 to 5 feet.....	.10	1.00	8.00	70.00
1 year, Payne's Keeper, see description, 1 to 2 ft.	.20	1.50	10.00

SELECT VARIETIES.

SUMMER APPLES.—**Carolina Red June.** (Red June). Medium size, red; flesh white. Last of June.

Duchess Oldenburg.—Russian, Medium to large size; skin yellow, streaked with red and somewhat blushed. Productive; August.

Early Harvest.—Medium to large, bright straw color; flesh white. Tree moderately vigorous and productive; one of the best. First of July.

Golden Sweet.—Rather large; pale yellow; very sweet and good. August.

Keswick Codlin.—Large, excellent for cooking; productive and early in bearing. July and August.

Red Astrachan.—Large, crimson, handsome; rather acid, but good and crisp; profitable. Early.

✓ **Summer Queen.**—Medium to large; surface yellow, blotched and streaked with red; flesh yellow. August.

✓ **Sweet Bough.**—An old favorite, fair size, good quality.

✓ **Yellow Transparent.**—This valuable Apple is said to be of Russian origin. However, we find it to be a very valuable addition to our list. Fruit medium to large; nearly white.

✓ **FALL APPLES.—Maiden's Blush.**—Rather large, evenly shaded red cheek or blush on a clear-pale yellow ground; bears large crops. August and September.

✓ **Rambo.**—Medium; streaked with dull red and somewhat dotted, productive and vigorous. September to November.

✓ **Rome Beauty.**—Large, yellow, shaded with red; tender; juicy, sub-acid. October to February.

✓ **Wealthy.**—An Apple of fine appearance and quality; an early and profuse bearer; a good market Apple of its season. Tree hardy; in size and beauty it equals Baldwin, and is a better dessert Apple. Ripens here last of August. Winter Apple North.

In addition to above described fall varieties, we grow **Fulton, Haas, Colvert, Flora Belle, Twenty Ounce Pippin.**

✓ **WINTER APPLES:—Arkansas Black.**—Origin Bentonville, Arkansas. The tree is a beautiful upright grower, young wood very dark. Fruit medium to large; fine flavor; beautiful dark color, almost black; flesh yellowish, slightly sub-acid, crisp. One of the best cooking Apples; vigorous. January to May.

✓ **Akin.**—Size and color very much like Jonathan, but keeps three months longer; Ill. Hort. Soc.: "The original Akin tree is 7 feet 3 inches in circumference, about 40 feet high, and over 60 years old. A regular bearer." Keeps until April or May.

✓ **Babitt.**—A strong, large grower; wood hard and tough; heavy bearer. Ready to cook as soon as grown, but it is so acid that few like to eat it uncooked until the latter part of the season, when it is a favorite eating apple.

✓ **Ben Davis.**—Fruit medium to large, flesh white; an excellent variety. Tree very hardy, a free grower, coming into bearing early, and very productive; very popular. December to March.

✓ **Clayton.**—Large, conical, flattened, regular; red, with darker stripes; flesh yellow, breaking, sub-acid; Tree a strong grower, long lived. December to March.

✓ **Grimes' Golden.**—Medium to large; rich golden yellow; flesh tender, mild, subacid. Should be gathered before turning yellow and put in a cool place, and will often keep until February. For canning purposes it nearly equals the pear. Tree hardy vigorous; an early and abundant bearer. November to January.

✓ **Huntsman's Favorite.**—Originated in Johnson County, Missouri. Very large; golden yellow, with bright red cheek; nearly sweet, fine flavor, very aromatic. One of the best and highest selling market Apples; tree very healthy and moderately productive. November to January.

✓ **Gano.**—This Apple was introduced to the public in 1886. It has surpassed that famous commercial variety, Ben Davis, in this section. Tree very hardy; has never been injured by the cold winters; it bears very young. Fruit bright red on yellow ground, no stripes; large, oblong, tapering to the eye; surface smooth, takes a very high polish, making it valuable as a stand fruit; flesh white. An early, annual and prolific bearer. December to May.

✓ **Ingram.**—A seedling of the old Janet. Originated near Springfield,

Mo. Its habits are similar to the Janet, but the tree is a more upright grower, and the Apple is not subject to crack. Size medium: striped bright red in the sun; flesh greenish yellow, agreeable, subacid flavor; good keeper. Tree hardy, late bloomer and very productive.

Janet.—Rawle's Janet; Medium, roundish, greenish yellow, striped with red; rich and juicy, one of the best and longest keepers in the South and Southwest; valuable for its high quality and its late blooming; moderate grower. January to March.

Jonathan.



Jonathan.—Fruit medium, roundish; skin yellow, nearly covered with dark or lively red; moderate grower. One of the best Apples for home use or market. October to January.

Tompkins King.—Well known and a valuable big red apple. It is not always satisfactory but is worthy of consideration.

Longfield.—A very hardy variety, chiefly valuable in the cold north and northwest. Fruit is small; the tree is productive to a fault. Season but little later than Maiden Blush, though usually offered as a winter apple.

Mammoth Black Twig.—Supposed to be a seedling of the Wine Sap, but tree a better grower in the nursery and fruit much larger; or, in other words, an improved Wine Sap. Tree a fine, upright, spreading grower.

Mann.—An upright grower, forming a round head; fruit medium to large, roundish oblate; skin deep yellow when fully ripe.

Missouri Pippin.—Large, oblong, bright red, with numerous gray dots, very handsome, fair quality, an early and very abundant bearer, and very profitable. December to March.

Payne's Keeper.—Is a magnificent winter apple, selling higher than any other variety on the market. Our stock is from the original orchard of the Payne Sisters, near Everton, Mo. The tree is a slow grower in the nursery and we offer 1-year-olds, 1 to 2 ft. at 20c each, 10 for \$1.50, 100 for \$10.

Salome.—A northern Illinois Apple, said to very hardy, bearing early and abundantly. Resembles the Janet in size and color; a good keeper. January to April.

Talman's Sweet.—Medium; pale yellow, slightly tinged with red; firm,

rich and very sweet; valuable baking apple; vigorous and productive. November to April.

Vandevere.—An old and popular sort for home use.

White Winter Pearmain.—Large, roundish, oblong, conic; pale yellow. December to February.

Willow Twig.—Medium size; light yellow, shaded and marbled with dull red and sprinkled with russet dots; flesh yellowish green, pleasant, sub-acid. Tree blights badly as a rule, hence cannot recommend.

Winesap.—Medium. dark red; a favorite market variety in the West. November to April.

Wolf River.—Very large and handsome; flesh whitish, sub-acid, a good bearer. November and December.

York Imperial.—This Apple has been gaining in favor, and is being planted largely in the West as a commercial sort. Large.

We also grow **North Western Greening, Gravenstein, Western Beauty, Golden Russett, Snow, Baldwin, Minkler, Shackelford, Canada Red.**

CRAB APPLES.—Svslop, Whitney, Transcendent.

SPECIAL AND NEW.

	Each.	10.	100.	1000.
2 years, select, 5 to 7 feet	\$0.15	\$1.25	\$11.00	\$100.00
2 years, No. 1, 4 to 5 feet, well branched.15	1.50	8.50	80.00
2 years, medium, 3 to 4 feet.....	.10	.75	6.00	45.00
1 year, budded, 3 to 5 feet, (splendid)....	.15	1.00	8.50	75.00

VARIETIES—Ingram, York Imperial, M. Black Twig, Yellow Transparent, Gano.

We pay the Freight on all orders amounting to over \$15.00. Get your neighbors to join with you in an order.



Peach Trees

We are the largest growers of Peach Trees in the West and can supply in any quantity—the best up to date market sorts. Our peach are stocky, nicely headed, smooth, straight bodies, well rooted, on healthy Peach stocks and free from any disease. Remember this in comparing prices with eastern establishments. Freight paid to your Station, on conditions mentioned. Prices as follows unless otherwise indicated. We indicate the season of ripening here:

	Each	10	100	1000
Medium, 2 to 4 feet, nice, well rooted....	\$0.10	\$0.75	\$6.00	\$60.00
First Class 4 to 5 feet, nicely headed....	0.10	1.00	9.00	80.00
Extra select, 5 to 6 feet.....	0.15	1.25	11.00	100.00

SELECT VARIETIES.

Alexander Early. Large size, handsome and regular in form, with deep maroon shade, adheres to the stone; should remain on the tree until fully ripe. White flesh. Last of June.

Briggs Red May. Medium size; very highly colored; flesh greenish

On club orders amounting to over \$25.00, 10 per cent additional in stock will be allowed.

white, very juicy, vinous, and of very good quality: adheres somewhat to the stone; of firm texture; tree very prolific. Ripens fully ten days later than Amsden.

✓ **Champion.** Originated at Nokomis, Illinois. Fruit large, beautiful in appearance; flavor delicious, sweet, rich and juicy; skin creamy white, with red cheek; freestone. August 15.

✓ **Chinese Cling.** Most popular Southern peach, oblong, creamy skin, with faint flashes of red. August.

✓ **Crawford's Early.** This beautiful yellow peach is highly esteemed for market purposes. Fruit very large, oblong; skin yellow, with fine red cheek; flesh yellow, juicy, sweet and excellent; free. Last of July. Would not advise planting this sort north of Central Missouri.

✓ **Crawford's Late.** Fruit of the largest size; skin yellow, or greenish yellow, with dull red cheek; flesh yellow; productive; one of the best; free. August and September.

✓ **Chair's Choice.** Large, late, yellow. One of the best for home or market planting.

✓ **Capt. Ede.** Originated on farm of Capt. Ede in Illinois. Is a splendid yellow freestone variety. In appearance very much like Elberta, which it equals in every way and is better quality.

✓ **Crosby.** If you want peaches every year, try some Crosby. It is of large size, rich orange yellow, splashed with red and of best quality. Mid-season.

✓ **Elberta.** A Georgia cross between Crawford and Chinese Cling, very large, well colored; all things considered the finest yellow freestone in cultivation; no one can go amiss by planting it; fruit perfectly free from rot, and one of the most successful shipping varieties. August 20th.

✓ **Family Favorite.** Free, seedling of Chinese Cling, of better color, large, clear, waxy complexion with blush, prolific, firm, valuable for shipping, canning or drying. Last of July.

✓ **Foster.** Same season as Crawford's Early, but much more productive; yellow, with red cheek; quality best; good size.

✓ **Gold Dust.** If you want the very best canning variety this is the peach. Large Yellow Clingstone; juicy, productive and of best quality. Season, September 15th to 20th.

✓ **General Lee.** An improved Chinese Cling; very valuable. August 20th.

✓ **Globe.** An improvement on Crawford's Late; fruit large, globular, of a rich golden yellow with a red blush, flesh yellow, juicy. August.

✓ **Henrietta.** (Levy). The most magnificent yellow cling known, largest size, mostly covered with bright crimson, hardy, productive, sure bearer; always commands fancy prices. September 25th.

✓ **Heath Cling.** Large, oblong, creamy white, slightly tinged with red in the sun; very tender, juicy, melting; very rich and luscious. September 15th.

✓ **Mountain Rose.** Large, red; flesh white, rich, juicy, excellent. Season August 1st.

✓ **Miller Cling.**—An extra large clingstone. Hardy, productive, and of best quality. We consider it the best white clingstone ripening early in September.

✓ **Old Mixon Cling.** Large, with red cheek; juicy, rich and high flavored: one of the best clingstone peaches. White flesh. August 15th.

✓ **Old Mixon Free.** Large, white flesh, with deep red cheek; rich and good; one of the best. August.

Picquet's Late. A variety of large size; yellow, with red cheek; flesh yellow; freestone. September.

Ringgold Cling. Much larger than Heath, everyway an improvement on that popular kind. September 1st.

Reeve's Favorite. Fruit very large, round; skin yellow with a red cheek; flesh yellow;; tree hardy and productive; one of the best and most reliable yellow market peaches. Season about August 1st.

Salway. Fruit large, yellow, with red cheek; flesh yellow; a late showy market sort; freestone. Last of September.

Smock Free. Fruit large, skin orange yellow, mottled with red, a good market sort. September 15.

Sneed. The most remarkable early peach yet introduced; it ripens a week to ten days earlier than Alexander, and belongs to an entirely different type from Alexander and Hale's Early; it is very distinct in tree and fruit, belonging to the Chinese Cling type; size medium.

Elberta.



Stump the World. Very large, roundish; skin white, with a bright red cheek; flesh white; freestone. End of August.

Susquehanna. One of the handsomest peaches; large, yellow flesh, rich and good; freestone. September.

Thurber. A seedling of the Chinese Cling, which it resembles in size and color; skin white, with light crimson mottlings; freestone. Ripens in August.

Triumph. The earliest yellow peach known. Productive, hardy and profitable for market. Originated in Georgia.

Wonderful. Color rich yellow; flesh yellow; high flavored, firm. Ripens in October.

Wheatland. Large, roundish, skin golden yellow shaded with crimson on the sunny side; flesh yellow and of fine quality; tree vigorous. August and September.

Yellow St. John. Large, flesh yellow. Freestone. July.

SPECIAL SORTS.

	Each	10	100	1000
5 to 6 feet, select.....	\$0.25	\$2.00	\$12.00	\$110.00
3 to 5 feet, first class.....	0.25	2.00	10.00	90.00

✓ **Athens.** The finest yellow cling in existence. Very large, hardy and productive. Season September.

Barnes. A late Blood Cling. Season October 1st.

✓ **Carman.** White flesh, large with beautiful mottled red cheek. A valuable home or market sort. Season about ten days later than Alexander. Our stock came from the originator.

✓ **Fitzgerald.** Of Crawford type. A seedling found at Oakville, Ont., where it stands the winter perfectly, is undoubtedly **very hardy**. **Quality** first-class, freestone, and we recommend it with entire satisfaction.

✓ **Gold Medal.** Elberta shape and color, larger and about ten days later than Elberta. Freestone.

✓ **Golden Gate.** Originated by Dr. Smith, of Hermann, Mo. Very productive, large beautiful yellow. Season, a week later than Elberta.

Queen. A very late September variety. Originated in Howell County, Missouri, Freestone, white flesh, red cheek. Season September.

✓ **Lady Ingold.** In great demand as a popular, market sort. Yellow, Free.

✓ **Miller Cling Peach.** An extra large clingstone. Hardy, productive, and of best quality. Earlier season than Heath Cling, but larger and better color. We consider it the **best of all clingstones**.

✓ **Matthews Beauty.** Originated in Georgia. A large late yellow freestone. Fully as large as Elberta and two weeks later. Would advise extensive planting of this sort.



Plum Trees

	Each	10	100	1000
First class trees, 5 to 6 feet.....	\$0.30	\$2.50	\$20.00	\$180.00
First Class trees, 4 to 5 feet.....	.25	2.00	15.00	150.00
First Class trees, 3 to 4 feet.....	.20	1.50	12.00	110.00

OUR SELECT LIST OF VARIETIES.

Abundance. A hardy productive Japanese sort. Large purplish red; quality very best. Season, early in July.

Burbank. Large, varying less in size than the other Japanese Plums; it is nearly globular; clear cherry-red, with a thin lilac bloom; flesh deep yellow, firm and meaty, tree vigorous and productive.

Common Damson. Well known and very productive. Season September.

Golden Beauty. Round, large as Wild Goose; rich golden yellow; very firm; small seed, nearly free, excellent in quality, immensely productive. September.

German Prune. Very profitable, and will succeed whenever Common Damson can be grown. Very large. We consider it the best of the European sorts. August and September.

Ogon. It is large, nearly round; of the brightest golden yellow; flesh firm, sweet, rich and dry; ripens a little earlier than Abundance or Botan. Freestone; vigorous and hardy.

Red June. One of the best Japanese varieties. Ripening before Abundance. Tree upright, vigorous, hardy.

Shropshire Damson. A plum of fine quality, sprightly. In market it has commanded nearly double the price of the Common Damson, and is enormously productive. Last of September.

Shipper's Pride. This plum originated in northwestern New York, near the shore of Lake Ontario. Size large; color dark purple. First of September.

Willard.—One of the imported Japanese varieties, ripening before Abundance. When ripe is dark red.

Wild Goose.—Large, rich, crimson, beautiful, flesh soft, rich, melting, delicious, with a full, fruity flavor. Tree a strong grower, prolific. This variety is among plums what the Ben Davis is among apples—referring to the American class of plums. July.

Wickson.—We regard this as the best of the late ripening Japan sorts. Readily parts from the seeds. Extra large and we can advise extensive planting for home and for market. Season August.

STANDARD AND DWARF PEAR TREES.

Our Pears are especially clean, smooth and well rooted, grown on x x French imported stocks. Varieties marked D. & S. can be supplied in either standard or dwarf.

	Each	10	100	1000
Leading sorts, first-class 5 to 7 feet, 2 yrs...	\$0.30	\$2.00	\$16.00	\$150.00
Leading sorts, 4 to 6 feet, 2 years.....	0.25	1.75	14.00	130.00
Leading sorts, 1 year, 4 to 5 feet.....	0.20	1.60	12.00	110.00
Leading sorts, 1 year, 3 to 4 feet.....	0.20	1.50	10.00	100.00

LIST OF VARIETIES.

Kieffer, D. S.	Anjou	Osband's Summer
Louise Bonne, D. S.	Seckel	Duchess DeAngouleme,
Bartlett	Mannings Elizabeth	Flemish Beauty
Garber	Buffum, D. S.	B. D. Clairgeau
Clapps	Howell, D. S.	

Remember that at our prices no charges are made for boxes or freight.



Part of forty-acre Block of 500,000 two-year Trees.

Cherry Trees

Our Cherry are all budded on Imported French Mahaleb and Mazzard stock. They have fine roots and nice heads. All well rooted and will be graded full size indicated, and up. We have some nice Cherry on Mazzard stocks. Many prefer that stock.

	Each	10	100
Leading sorts, sweets, first class, 2 years, 5 to 6 feet..	\$0.30	\$3.00	\$25.00
Leading sorts, sour, extra select, 4 to 5 feet.....	0.35	3.00	25.00
Leading sorts, sour, first class, 3 to 4 feet	0.30	2.00	16.00
Leading sorts, sour, first class, 1 yr., 2½ to 3½ feet..	0.20	1.50	13.00

OUR SELECT LIST OF VARIETIES.

Baldwin.—A new variety of great promise, hardy and productive.

Dyehouse.—Very early and sure bearer; ripens before Early Richmond; but not quite as productive. Mav.

English Morello.—Medium to large; blackish red, acid, juicy. Very productive. July.

Early Richmond.—(Kentish, Virginian or Early May) Medium size, red; melting, juicy springtly, acid flavor. This is one of the most valuable and popular of the acid cherries, and is exceedingly productive. First of June.

Elton.—A splendid sweet sort, about ten days later than Gov. Wood, which it somewhat resembles.

Gov. Wood.—One of the best cherries; very large, light red, juicy, rich and delicious. Tree healthy and a great bearer. May and June.

Large Montmorency.—No doubt one of the finest acid cherries; tree very hardy and an immense bearer commences to fruit while young, and is loaded annually thereafter with fine crops; fruit of good size, fine flavor,



Free Packing and Free Freight on Conditions indicated.

and of bright, clear, shining red; valuable everywhere, especially for northern latitudes; larger than Early Richmond, and fully ten days later. End of June.

Magann Cherry.—A new hardy, sweet Cherry. Original tree in Franklin County, Missouri, supposed to be about forty years of age, and producing annually. Fruit large, almost black when fully ripe, growing in large clusters. Tree immensely productive and never fails to bear a crop. It will pay you to include some of these in your order for other stock.

Wragg.—Originated in Iowa. Medium to large in size, long stem, dark purple when fully ripe. A variety well adapted for the high latitude and prairie regions of the Northwest. This is the very best sour variety. July.



Apricot Trees

	10	100
Leading sorts, 4 to 6 feet, extra select.....	\$2.00	\$15.00
Leading sorts, 3 to 4 feet, first class.....	1.50	12.00

LIST OF VARIETIES.

English—Early Golden	Peach	Moorpark	Royal
Russian—Superb	Alexis Catherine	Budd Gibb	



Quinces

(Well Headed.)

	Each	10.	100.
Leading sorts, 3 to 4 feet, 2 years, extra select	\$0.35	\$3.00	\$20.00
Leading sorts, 2 to 3 feet, 2 years, first class	0.30	2.00	15.00



Small Fruits, and Miscellaneous.

MULBERRIES.

	Each	10.	100.
Downing, 4 to 5 feet	\$0.40	\$3.50	\$35.00
Russian, 5 to 7 feet	0.30	2.00	20.00
Tea's Weeping—nothing better for lawn.....	1.00	9.00	

NUTS.

	Each	10.
Almonds. (hard and soft shell), 2 to 3 feet.....	\$0.30	\$2.00
Butternuts, 4 to 5 feet	0.35	3.00
Chestnuts—American sweet. 4 to 6 feet.....	0.40	3.00
Pecans—Mammoth—2 feet, 2 years	0.30	2.50
Pecans—Mammoth—2 to 3 feet, 2 years	0.35	3.00

GRAPE VINES.

	Each	10	100	1000
Brighton, 2 years, No. 1 Red.....	\$0.10	\$0.75	\$5.00	\$40.00
Champion, 2 years, No. 1 Black.....	0.10	0.50	3.50	30.00
Cynthiana, 1 year, No. 1 Black.....	0.20	1.50	10.00	90.00
Concord, 1 year, N. 1 Black.....	0.10	0.50	4.00	30.00
Delaware, 1 year, No. 1 Red.....	0.10	0.75	3.00	25.00
Eaton, 2 years, No. 1 Black.....	0.20	1.50	10.00	
Elvira, 1 year, No. 1 White.....	0.10	0.60	3.00	25.00
Empire State, 2 years, No. 1 White.....	0.25	1.50	7.00	
Goethe, 1 year, No. 1, Yellow Green.....	0.10	0.75	6.00	50.00
Hartford, 1 year, No. 1 Black.....	0.10	0.50	3.50	30.00
Ive's Seedling, 1 year, No. 1 Black.....	0.10	0.50	3.50	30.00
Moore's Early, 2 years, No. 1, Black.....	0.25	0.75	6.00	50.00
Niagara, 2 years, No. 1 White.....	0.15	0.75	5.00	40.00
Norton's Virginia, 2 years, No. 1 Black.....	0.25	1.50	10.00	75.00
Pocklington, 1 year, No. 1 White Yellow....	0.15	1.00	5.00	40.00
Worden, 2 years, No. 1, Black.....	0.15	0.75	5.00	40.00

CURRANTS.

	Each	10.	100.	1000.
Red Dutch, White Dutch, Versailles, 2 years ..	\$0.10	\$0.75	\$6.00	\$40.00
Black Naples, Fay's Prolific, 2 years.....	0.10	0.75	6.00	40.00

BLACKBERRIES.

	10.	100.	1000.
Snyder, Early Harvest, Kittatinny, Freed.....	\$0.50	\$2.00	\$12.00
Lucretia, Dewberry.....	0.50	2.50	15.00



RASPBERRIES.

	10.	100.	1000.
Gregg, Souhegan, Mammoth Cluster, Kansas.....	\$0.50	\$1.50	\$10.00
Shaffer's Colossal, Marlboro, Miller.....	0.50	1.50	10.00
Ohio, Hopkins.....	0.50	1.50	10.00
Cumberland.....		2.50	20.00

GOOSEBERRIES.

	Each	10.	100.	1000.
Downing, 2 years, No. 1.....	\$0.15	\$1.50	\$7.00	\$50.00
Houghton, 2 years No. 1.....	0.15	1.00	6.00	45.00
Industry, 2 years, No. 1.....	0.30	2.00	15.00	

STRAWBERRIES.

	100	1000
Leading sorts.....	0.50	4.00

We promise you extra quality—not "extra count."
Send your orders early. Don't wait until the last day.



EVERGREENS.

	Each	10.	100.
Balsam Fir, Norway Spruce, Arbor Vitae, 2 to 3 feet..	\$.40	\$3.00	\$25.00
Scotch and Austrian Pine, 3 to 4 feet.....	0.40	3.00	25.00

Larger and Smaller grades of Evergreens and other varieties, prices on application.

ROSES.

	Each	10.	100.
Hybrid Perpetuals—2 years and extra 1 year.....	\$0.30	\$2.50	\$20.00
Climbing—1 year extra	0.30	2.00	15.00
Moss—2 years and extra 1 year	0.30	2.50	20.00
Tree Roses—strong	1.00	10.00	75.00

MISCELLANEOUS.

	Each	10.	100.
Asparagus—Conovers Collosal, 2 yrs.....	\$	\$	\$ 1.00
Rhubarb—Victoria		0.75	6.00
Catalpa, 6 to 7 feet	0.50	2.50	20.00
Poplar—Lombardy, 8 to 10 feet	0.50	4.00	30.00
Maple—Sugar, 6 to 8 feet	0.50	4.00	30.00
Tulip Trees, 5 to 6 feet	0.50	4.00	30.00
Weeping Willow—Kilmarnock, New American	0.50	4.00	30.00
Calycanthus, 2 to 3 feet, first class.....	0.30	2.50	15.00
Hydrangea, 2 to 3 feet, first class	0.30	2.50	15.00
Honeysuckles	0.30	2.50	15.00
Snowballs, 3 to 4 feet	0.30	2.50	15.00
Prunus Pissarda, Purple Leaf Plum.....	0.30	2.50	15.00

New Haven Nurseries, New Haven, Mo.

You Order the Trees—We do the rest.

We pay the freight on small orders clubbed together for shipment to one point, if the amount is \$15.00 or more.

From Missouri's Leading Farm Papers

Judge Sam'l Miller in Colman's Rural World, St. Louis, Mo.

For several years I have intended visiting the nurseries of Bagby & Sons, New Haven, Mo. July 26th we made the trip.

I met Robert Bagby, the oldest of the sons, and soon we were driving and walking among the trees. There are so many different plats that one might call them a lot of nurseries.

A constant cultivation is kept up among the trees here. Weeds are not allowed to get a start. Some think working the soil when dry goes no good, but the reverse is the case. Care must be taken that roots are not cut or disturbed. One of the difficulties of this business is the getting of suitable land for the purpose, and this cannot be gotten in one place. The firm rents for a term of three years, I understand, paying the farmers a rental more than they can make clear by farming grain. One nursery that we went to see was three miles out of town.

I spent most of the time with the oldest son of the firm. There are but two, Robert and John, and they are men especially adapted for the business. They are strictly honest and upright in all their dealings and well-versed in all the new modes of propagating. They have an extensive list of varieties which is carefully kept correct in name so far as they are concerned. They justly deserve the reward that they have been receiving and deserve more in the future.

Their packing house is 70x140 feet, in which they could store an immense amount of stock, as it is frost-proof. It is fitted up for all work to be done in there. Great piles of lumber are sawed ready to be made into boxes, packing materials, etc., in abundance. A specimen peach orchard of some 40 or 50 varieties of one, two or three trees each will be a nice place to stroll about in when there is a crop of fruit there, and if spared that long, I shall try to be there then. The trees are the picture of health and vigor. There is not a sign of anything like yellows on the ground.

From Western Fruit-Grower.

While in St. Louis recently, a representative of the Western Fruit-Grower went out to spend the day with R. J. Bagby of the New Haven Nurseries, New Haven, Mo. This nursery is on the main line of the Missouri Pacific railway, about sixty miles west of St. Louis.

The day we were at New Haven was an ideal one, and a trip was made through the nurseries. This firm was established many years ago by the father of the two younger Bagbys, who now have charge of the plant. From the first a good business was done, which has grown until now the New Haven Nurseries are one of the largest in the West, and their goods have a high reputation. The grounds are kept in perfect condition, with no insects or diseases present, so that A No. 1 stock is delivered to purchasers. The high quality of the stock sent out by this firm is illustrated by the fact that carloads of peach trees have been shipped to California, where they are subjected to the very severe inspection of the authorities of that state. Notwithstanding this inspection, no stock has been turned down.

The peach is a specialty of the New Haven Nurseries, and some magnificent blocks of trees will be ready for market during the coming season. One thing which impressed us at the time of our visit was the experimental peach orchard. This is a small orchard, kept in perfect condition, where varieties are tested, and from which buds are secured for propagating purposes.

All parts of the nursery were in perfect condition, and trees were making a splendid growth. We noticed especially Japanese plums in bearing; they were loaded literally. These varieties are generally full of fruit this year.

Extract from Paper read before the Missouri State Horticultural Society at New Haven, June 5th. Suggestions on Peach Culture. By W. R. Wilkinson, President State Board of Agriculture.

I prefer Missouri-grown trees, one year old from bud, and know of no better nursery than the one situated right here in New Haven, Mo. I have bought thousands of these trees from them and have always found their output true to name, and good trees in every respect.



What Some of Our Customers Say

Delta, Colo.—“Trees very satisfactory.” (20,000 Elberta).

Salem, Oregon.—“Car of trees came several days ago and very satisfactory.”

Downey, California.—“The Peach trees are here in perfect condition; am well pleased.”

Fresno, California.—“The car of Peach trees arrived in good order and satisfactory.”

California, Mo.—“Car trees arrived on time and were as fine as I ever saw.”

Columbia, Mo.—“It may interest you to know that of about 75 varieties of peach trees sent here by you to be tested two years ago, all but one tree are now alive and doing extra well. They have made splendid growth and are now full of fruit buds, so they should fruit next year for the first time.”—J. C. WHITTEN.

Tadmor, Ohio.—“We have commenced to unload, and so far as we can see they are very fair. The roots are excellent.”

Oceola, Mo.—“Peach trees received. They are nice and all right.”

Washington, Mo.—“This was the best lot of trees I ever bought, or ever saw and am well satisfied.”

Springfield, Mo.—“Peach trees came O. K. and are fine.”

St. Charles, Mo.—“The trees arrived in good shape and have been planted with extra care. I am highly pleased with them.”

Villa Ridge, Mo.—“Trees came duly to hand. They were the finest stock I ever saw.”

St. Joseph, Mo.—“I ordered a great deal of stock this season from five different places, but none suited me better than yours.”

Thurston, Oklahoma.—“The trees came last night all O. K. I think they are fine.”

Norton, Kansas.—“The fruit trees I ordered of you have arrived in splendid order. I consider them as fine a lot of nursery stock as I ever handled.

Hamilton, Kansas.—“Received trees in good order and am well pleased with same.”

Hannibal, Mo.—“Trees received all right. A splendid lot.”

Waverly, Mo.—“I visited an orchard of Mr. Hall's of this place, to whom you sold some four years ago. They are most excellent and on that presentation, I communicate with you for trees.”

La Monte, Mo.—“The trees that I bought of you have pleased me so much that I have spoken of them to my friends.”

Superior, Neb.—“The 1,000 Peach trees I bought of you have done fine.”

Judge Wilkinson, President of the State Board of Agriculture, writes: “Miller Cling is doing splendid this year.”

Wathena, Kansas.—“We had very good luck with the stock we got of you. Did not have any rain from the month of April to the month of August and did not lose over 5 per cent of trees set out.”

Rushville, Ill.—“The trees arrived all right and we are more than pleased with them.”

Saverton, Mo., March 29, 1902.—“The trees came all right. The finest and most perfect I ever set.”—R. Dalton.



ABOUT AGENTS.

We are not employing traveling salesmen to solicit orders, but we shall be pleased to have you get up a club among your neighbors, and on club orders amounting to \$25.00 or more, we allow you 10 per cent additional in stock. We put up each order in a separate package so that upon receipt of the goods you have only to hand out the different lots as ordered. Many of our best customers buy in larger quantities at the lowest rates and distribute in lots as ordered by their neighbors.

References: Some of our correspondents have asked us to give them bank reference and we herewith comply, and can also refer to other local banks and to the commercial agencies.



A. KAHMANN, President.
T. W. CHAMBERS, Vice-President.

E. C. STUART, Cashier.
A. P. STUART, Asst. Cashier.

FIRST NATIONAL BANK,

Washington, Mo., Sept. 17, 1902.

TO WHOM IT MAY CONCERN:

THE NEW HAVEN NURSERIES of New Haven, Mo., have a paid in capital of \$30,000.00, have been patrons of this bank since its organization, and we know them to be thoroughly reliable in every way.

Established in 1872, they have by progressive methods, fair dealing, and the high quality of their stock, built up a trade which now reaches over the entire country, and places them in the front rank in the nursery business.

At no place do they bear a higher reputation or are held in better favor than in their own vicinity, where they are well known.

We take pleasure in recommending them to purchasers desiring to deal with a thoroughly reliable company. Respectfully,

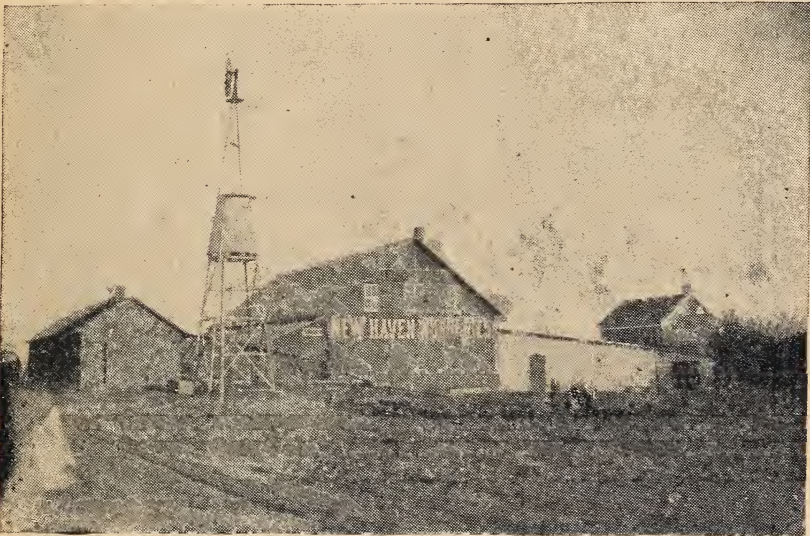
E. C. STUART, Cashier.

New Haven Nurseries

New Haven, Missouri

We mail this condensed list of prices to our friends and customers and will ask that they favor us with their orders as early as practical. The **Prices** are for the goods at **your station**, if your order amounts to \$15.00 or more. We have now growing in our nurseries over two million fruit trees by actual count. All clean and healthy. **Entomologist's certificate** with each shipment. No San Jose Scale, Yellows or Rosette has been found in this county.

Shipments to Pacific Coast and Southern States from our frost proof storage during winter months via Southern Routes.



Packing Sheds and Frost Proof Storage.

We are growers of what we sell, having over 300 acres devoted exclusively to the nursery business. Many nurserymen are simply jobbers in the trade, and cannot sell stock with the same certainty of its being true to name and free from disease.

New Haven Nurseries

New Haven, Mo.

You Order the Trees—We do the rest.

We pay the Freight on small orders clubbed together for shipment to one point, if the amount is \$15.00 or more.

AS A GUARANTEE

To the buyer that our stock is absolutely free from disease, a duplicate Certificate of Inspection from the Government Entomologist is attached to each shipment



Digging Keiffer Pear with four teams (8 mules) and a Bragg Digger, cutting about 24 inches deep.

NEW HAVEN NURSERIES

J. BAGBY & SONS CO.

NEW HAVEN, MISSOURI

LOCATION—67 Miles West of St. Louis, on Main Line of Missouri Pacific Railway