

8 28

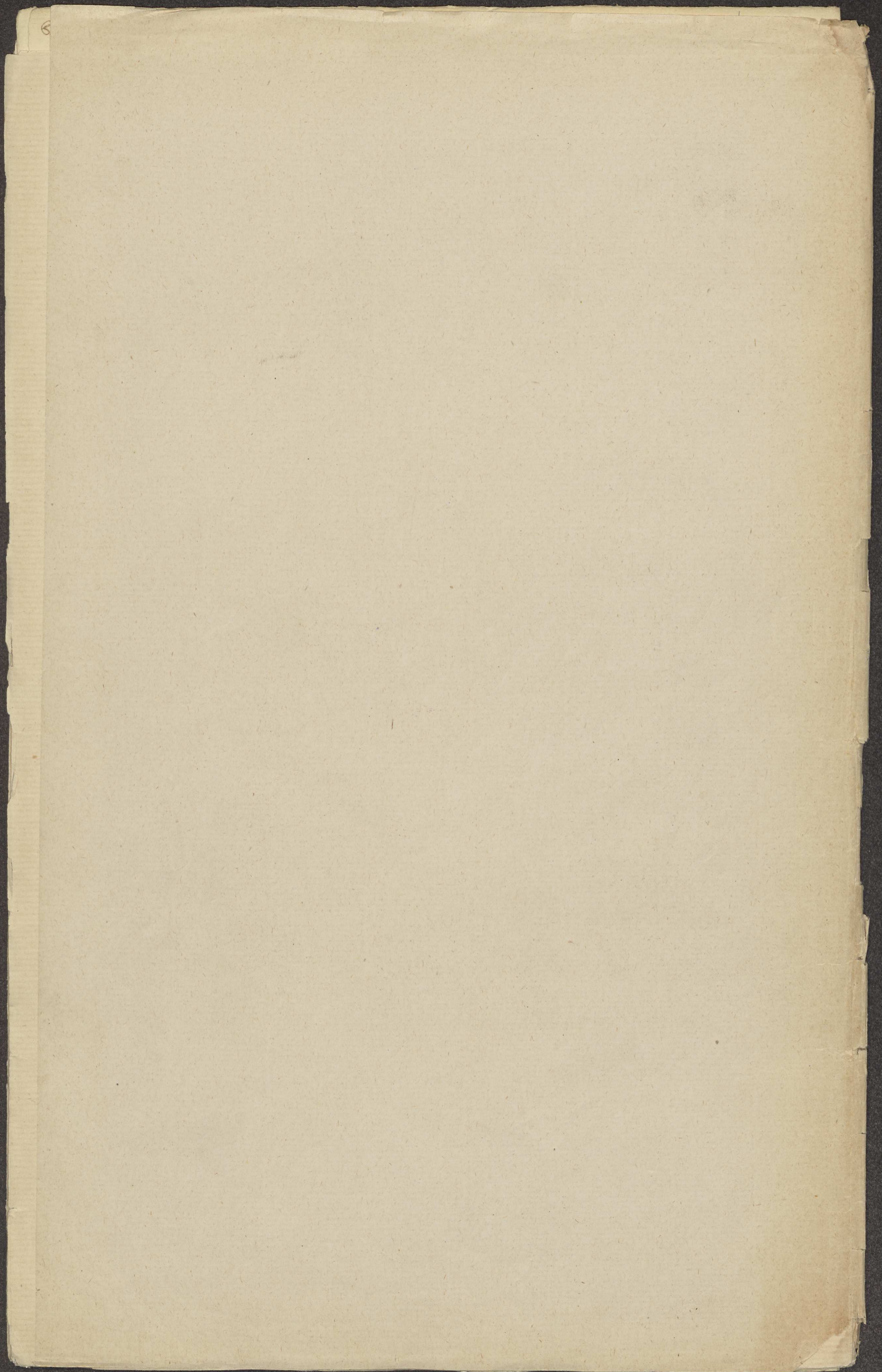
Ord nr. 104

M. S. Or. 4309.
(945)

Malar

yangkal

~~6~~



ကတည်းက... ^{metallic}
 နာယက...
 ၁...
 ၂...
 ၃...
 ၄... ^{luteu}
 ၅...
 ၆... ^{sumu}
 ၇...
 ၈...
 ၉...
 ၁၀...
 ၁၁...
 ၁၂...
 ၁၃...
 ၁၄...
 ၁၅...
 ၁၆...
 ၁၇...
 ၁၈...
 ၁၉...
 ၂၀...
 ၂၁...
 ၂၂...
 ၂၃...
 ၂၄...
 ၂၅...
 ၂၆...
 ၂၇...
 ၂၈...
 ၂၉...
 ၃၀...
 ၃၁...
 ၃၂...
 ၃၃...
 ၃၄...
 ၃၅...
 ၃၆...
 ၃၇...
 ၃၈...
 ၃၉...
 ၄၀...
 ၄၁...
 ၄၂...
 ၄၃...
 ၄၄...
 ၄၅...
 ၄၆...
 ၄၇...
 ၄၈...
 ၄၉...
 ၅၀...

ပ... ^၃
 က...
 လ...
 န...
 ဝ...
 ၁...
 ၂...
 ၃...
 ၄...
 ၅...
 ၆...
 ၇...
 ၈...
 ၉...
 ၁၀...
 ၁၁...
 ၁၂...
 ၁၃...
 ၁၄...
 ၁၅...
 ၁၆...
 ၁၇...
 ၁၈...
 ၁၉...
 ၂၀...
 ၂၁...
 ၂၂...
 ၂၃...
 ၂၄...
 ၂၅...
 ၂၆...
 ၂၇...
 ၂၈...
 ၂၉...
 ၃၀...
 ၃၁...
 ၃၂...
 ၃၃...
 ၃၄...
 ၃၅...
 ၃၆...
 ၃၇...
 ၃၈...
 ၃၉...
 ၄၀...
 ၄၁...
 ၄၂...
 ၄၃...
 ၄၄...
 ၄၅...
 ၄၆...
 ၄၇...
 ၄၈...
 ၄၉...
 ၅၀... ^၁

Singabela

d

b

၉

၁၁

Sibulul

၉

၉

၉

luteu

sumu

Kan

cal

၁

Sulu

Selatone

၁

၉

Handwritten text in Burmese script on the left page. The text is arranged in several paragraphs, with some lines starting with a character that looks like '၇' (7) or a similar symbol. Marginal letters on the right side include 'W', 'B', 'L', 'U', 'M', and 'N'. The script is dense and appears to be a form of historical or religious Burmese.

Handwritten text in Burmese script on the right page. The text is arranged in several paragraphs, with some lines starting with a character that looks like '၇' (7) or a similar symbol. Marginal letters on the left side include '၇', 'W', 'K', 'L', 'M', 'U', 'B', 'X', and 'L'. The script is dense and appears to be a form of historical or religious Burmese.

Handwritten marginal note or signature in Burmese script, possibly reading 'Kisawa'.

Handwritten text in a non-Latin script, likely a form of Malay or Indonesian, consisting of several lines of prose.

9

Handwritten text in a non-Latin script, continuing the narrative or list from the previous section.

temun

Handwritten text in a non-Latin script, further down the page.

sulat

tjabul

Yaman

Sal

Handwritten text in a non-Latin script, concluding the page.

Sabat

Kan

Klyf

Handwritten notes in Latin script at the top of the right page.

Handwritten text in a non-Latin script, starting the main content of the right page.

Handwritten text in a non-Latin script.

Handwritten text in a non-Latin script.

Handwritten text in a non-Latin script.

Handwritten text in a non-Latin script.

Handwritten text in a non-Latin script.

Handwritten text in a non-Latin script.

Handwritten text in a non-Latin script.

Handwritten text in a non-Latin script.

Handwritten text in a non-Latin script.

Handwritten text in a non-Latin script.

Handwritten text in a non-Latin script.

Handwritten text in a non-Latin script.

Handwritten text in a non-Latin script.

Handwritten text in a non-Latin script.

Handwritten text in a non-Latin script.

Handwritten text in a non-Latin script.

Handwritten notes in Latin script on the left side of the right page.

X

Handwritten Burmese text on the left page, consisting of approximately 15 lines of script.

raut

sup

6

baia

w

800

saka

kuis

tiangpi

utit

main

?

tiangpi

500

Handwritten Burmese text on the right page, consisting of approximately 15 lines of script.

Handwritten Burmese characters

Handwritten Burmese characters

Handwritten Burmese characters

Handwritten Burmese characters

Handwritten Burmese characters

Handwritten Burmese characters

Handwritten Burmese characters

Handwritten Burmese characters

Handwritten Burmese characters

Handwritten Burmese characters

Handwritten Burmese script on the left page of an open manuscript. The text is arranged in approximately 25 horizontal lines. Marginal notes in smaller script are visible on the right side of the page, including characters like '၁၅၂', '၁၅၃', '၁၅၄', '၁၅၅', '၁၅၆', '၁၅၇', '၁၅၈', '၁၅၉', '၁၆၀', '၁၆၁', '၁၆၂', '၁၆၃', '၁၆၄', '၁၆၅', '၁၆၆', '၁၆၇', '၁၆၈', '၁၆၉', '၁၇၀', '၁၇၁', '၁၇၂', '၁၇၃', '၁၇၄', '၁၇၅', '၁၇၆', '၁၇၇', '၁၇၈', '၁၇၉', '၁၈၀', '၁၈၁', '၁၈၂', '၁၈၃', '၁၈၄', '၁၈၅', '၁၈၆', '၁၈၇', '၁၈၈', '၁၈၉', '၁၉၀', '၁၉၁', '၁၉၂', '၁၉၃', '၁၉၄', '၁၉၅', '၁၉၆', '၁၉၇', '၁၉၈', '၁၉၉', '၂၀၀'.

၁၅၂

၁၅၃

၁၅၄

၁၅၅

၁၅၆

၁၅၇

၁၅၈

၁၅၉

၁၆၀

Handwritten Burmese script on the right page of an open manuscript. The text is arranged in approximately 25 horizontal lines. Marginal notes in smaller script are visible on the left side of the page, including characters like '၁၅၁', '၁၅၂', '၁၅၃', '၁၅၄', '၁၅၅', '၁၅၆', '၁၅၇', '၁၅၈', '၁၅၉', '၁၆၀', '၁၆၁', '၁၆၂', '၁၆၃', '၁၆၄', '၁၆၅', '၁၆၆', '၁၆၇', '၁၆၈', '၁၆၉', '၁၇၀', '၁၇၁', '၁၇၂', '၁၇၃', '၁၇၄', '၁၇၅', '၁၇၆', '၁၇၇', '၁၇၈', '၁၇၉', '၁၈၀', '၁၈၁', '၁၈၂', '၁၈၃', '၁၈၄', '၁၈၅', '၁၈၆', '၁၈၇', '၁၈၈', '၁၈၉', '၁၉၀', '၁၉၁', '၁၉၂', '၁၉၃', '၁၉၄', '၁၉၅', '၁၉၆', '၁၉၇', '၁၉၈', '၁၉၉', '၂၀၀'. There are also some larger characters and symbols interspersed, such as '၁၅၁', '၁၅၂', '၁၅၃', '၁၅၄', '၁၅၅', '၁၅၆', '၁၅၇', '၁၅၈', '၁၅၉', '၁၆၀', '၁၆၁', '၁၆၂', '၁၆၃', '၁၆၄', '၁၆၅', '၁၆၆', '၁၆၇', '၁၆၈', '၁၆၉', '၁၇၀', '၁၇၁', '၁၇၂', '၁၇၃', '၁၇၄', '၁၇၅', '၁၇၆', '၁၇၇', '၁၇၈', '၁၇၉', '၁၈၀', '၁၈၁', '၁၈၂', '၁၈၃', '၁၈၄', '၁၈၅', '၁၈၆', '၁၈၇', '၁၈၈', '၁၈၉', '၁၉၀', '၁၉၁', '၁၉၂', '၁၉၃', '၁၉၄', '၁၉၅', '၁၉၆', '၁၉၇', '၁၉၈', '၁၉၉', '၂၀၀'.

၁၅၁

၁၅၂

၁၅၃

၁၅၄

၁၅၅

၁၅၆

၁၅၇

၁၅၈

၁၅၉

၁၆၀

၁၆၁

၁၆၂

၁၆၃

၁၆၄

၁၆၅

၁၆၆

၁၆၇

၁၆၈

၁၆၉

၁၇၀

၁၇၁

၁၇၂

၁၇၃

၁၇၄

ထိုသို့ဖြစ်ပေါ်လာပြီးနောက်...
 ...အလွန်အမင်း...
 ...သို့မဟုတ်...
 ...အထူးသဖြင့်...
 ...အချို့က...
 ...အခြား...
 ...အထူးသဖြင့်...
 ...အချို့က...
 ...အခြား...
 ...အထူးသဖြင့်...
 ...အချို့က...
 ...အခြား...

၇၇
 ၂၇
 ၃၇
 ၄၇
 ၅၇
 ၆၇
 ၇၇
 ၈၇
 ၉၇
 ၁၀၇
 ၁၁၇
 ၁၂၇
 ၁၃၇
 ၁၄၇
 ၁၅၇
 ၁၆၇
 ၁၇၇
 ၁၈၇
 ၁၉၇
 ၂၀၇
 ၂၁၇
 ၂၂၇
 ၂၃၇
 ၂၄၇
 ၂၅၇
 ၂၆၇
 ၂၇၇
 ၂၈၇
 ၂၉၇
 ၃၀၇
 ၃၁၇
 ၃၂၇
 ၃၃၇
 ၃၄၇
 ၃၅၇
 ၃၆၇
 ၃၇၇
 ၃၈၇
 ၃၉၇
 ၄၀၇
 ၄၁၇
 ၄၂၇
 ၄၃၇
 ၄၄၇
 ၄၅၇
 ၄၆၇
 ၄၇၇
 ၄၈၇
 ၄၉၇
 ၅၀၇
 ၅၁၇
 ၅၂၇
 ၅၃၇
 ၅၄၇
 ၅၅၇
 ၅၆၇
 ၅၇၇
 ၅၈၇
 ၅၉၇
 ၆၀၇
 ၆၁၇
 ၆၂၇
 ၆၃၇
 ၆၄၇
 ၆၅၇
 ၆၆၇
 ၆၇၇
 ၆၈၇
 ၆၉၇
 ၇၀၇
 ၇၁၇
 ၇၂၇
 ၇၃၇
 ၇၄၇
 ၇၅၇
 ၇၆၇
 ၇၇၇
 ၇၈၇
 ၇၉၇
 ၈၀၇
 ၈၁၇
 ၈၂၇
 ၈၃၇
 ၈၄၇
 ၈၅၇
 ၈၆၇
 ၈၇၇
 ၈၈၇
 ၈၉၇
 ၉၀၇
 ၉၁၇
 ၉၂၇
 ၉၃၇
 ၉၄၇
 ၉၅၇
 ၉၆၇
 ၉၇၇
 ၉၈၇
 ၉၉၇
 ၁၀၀၇

၇၇
 ...အလွန်အမင်း...
 ...သို့မဟုတ်...
 ...အထူးသဖြင့်...
 ...အချို့က...
 ...အခြား...
 ...အထူးသဖြင့်...
 ...အချို့က...
 ...အခြား...
 ...အထူးသဖြင့်...
 ...အချို့က...
 ...အခြား...

၇၇
 ၂၇
 ၃၇
 ၄၇
 ၅၇
 ၆၇
 ၇၇
 ၈၇
 ၉၇
 ၁၀၇
 ၁၁၇
 ၁၂၇
 ၁၃၇
 ၁၄၇
 ၁၅၇
 ၁၆၇
 ၁၇၇
 ၁၈၇
 ၁၉၇
 ၂၀၇
 ၂၁၇
 ၂၂၇
 ၂၃၇
 ၂၄၇
 ၂၅၇
 ၂၆၇
 ၂၇၇
 ၂၈၇
 ၂၉၇
 ၃၀၇
 ၃၁၇
 ၃၂၇
 ၃၃၇
 ၃၄၇
 ၃၅၇
 ၃၆၇
 ၃၇၇
 ၃၈၇
 ၃၉၇
 ၄၀၇
 ၄၁၇
 ၄၂၇
 ၄၃၇
 ၄၄၇
 ၄၅၇
 ၄၆၇
 ၄၇၇
 ၄၈၇
 ၄၉၇
 ၅၀၇
 ၅၁၇
 ၅၂၇
 ၅၃၇
 ၅၄၇
 ၅၅၇
 ၅၆၇
 ၅၇၇
 ၅၈၇
 ၅၉၇
 ၆၀၇
 ၆၁၇
 ၆၂၇
 ၆၃၇
 ၆၄၇
 ၆၅၇
 ၆၆၇
 ၆၇၇
 ၆၈၇
 ၆၉၇
 ၇၀၇
 ၇၁၇
 ၇၂၇
 ၇၃၇
 ၇၄၇
 ၇၅၇
 ၇၆၇
 ၇၇၇
 ၇၈၇
 ၇၉၇
 ၈၀၇
 ၈၁၇
 ၈၂၇
 ၈၃၇
 ၈၄၇
 ၈၅၇
 ၈၆၇
 ၈၇၇
 ၈၈၇
 ၈၉၇
 ၉၀၇
 ၉၁၇
 ၉၂၇
 ၉၃၇
 ၉၄၇
 ၉၅၇
 ၉၆၇
 ၉၇၇
 ၉၈၇
 ၉၉၇
 ၁၀၀၇

Handwritten Burmese text on the left page, consisting of approximately 15 lines of script.

stamun

m but
l

p kum

l
line

N

el
c

gyp

Handwritten Burmese text on the right page, consisting of approximately 15 lines of script.

l

y

?

part

m

meta

d

s

g

?

l

y

Handwritten Burmese text on the left page, consisting of approximately 15 lines of script.

၂၀၀

၈၀၀၀၀၀

၅

၆

၇

၈

၉

၁၀

၁၁

၁၂

၁၃

၁၄

၁၅

၁၆

၁၇

၁၈

၁၉

Handwritten Burmese text on the right page, consisting of approximately 15 lines of script.

၂၀၀

၈၀၀၀၀၀

၅

၆

၇

၈

၉

၁၀

၁၁

၁၂

Handwritten text in Burmese script, consisting of approximately 25 lines of dense characters.

Handwritten marginal notes in Burmese script, including the word 'Katu'.

Handwritten marginal note 'abt'.

Handwritten marginal note 'rapah'.

Handwritten marginal note 'nika'.

Handwritten marginal note 'flu'.

37

Handwritten text in Burmese script, consisting of approximately 25 lines of dense characters.

Handwritten marginal note 'pudiput'.

Handwritten marginal note 'u'.

Handwritten marginal note 'kata'.

Handwritten marginal note 'd'.

Handwritten marginal note 'b'.

Handwritten marginal note 'p'.

Handwritten marginal note 'lunar'.

မကွယ်သော... ပုဂံပလဘာ... စကတိ... ဝ... ၂... ၃... ၄... ၅... ၆... ၇... ၈... ၉... ၁၀... ၁၁... ၁၂... ၁၃... ၁၄... ၁၅... ၁၆... ၁၇... ၁၈... ၁၉... ၂၀... ၂၁... ၂၂... ၂၃... ၂၄... ၂၅... ၂၆... ၂၇... ၂၈... ၂၉... ၃၀... ၃၁... ၃၂... ၃၃... ၃၄... ၃၅... ၃၆... ၃၇... ၃၈... ၃၉... ၄၀... ၄၁... ၄၂... ၄၃... ၄၄... ၄၅... ၄၆... ၄၇... ၄၈... ၄၉... ၅၀... ၅၁... ၅၂... ၅၃... ၅၄... ၅၅... ၅၆... ၅၇... ၅၈... ၅၉... ၆၀... ၆၁... ၆၂... ၆၃... ၆၄... ၆၅... ၆၆... ၆၇... ၆၈... ၆၉... ၇၀... ၇၁... ၇၂... ၇၃... ၇၄... ၇၅... ၇၆... ၇၇... ၇၈... ၇၉... ၈၀... ၈၁... ၈၂... ၈၃... ၈၄... ၈၅... ၈၆... ၈၇... ၈၈... ၈၉... ၉၀... ၉၁... ၉၂... ၉၃... ၉၄... ၉၅... ၉၆... ၉၇... ၉၈... ၉၉... ၁၀၀...

Batala
Sijal

ball

u

၃၆... ၃၇... ၃၈... ၃၉... ၄၀... ၄၁... ၄၂... ၄၃... ၄၄... ၄၅... ၄၆... ၄၇... ၄၈... ၄၉... ၅၀... ၅၁... ၅၂... ၅၃... ၅၄... ၅၅... ၅၆... ၅၇... ၅၈... ၅၉... ၆၀... ၆၁... ၆၂... ၆၃... ၆၄... ၆၅... ၆၆... ၆၇... ၆၈... ၆၉... ၇၀... ၇၁... ၇၂... ၇၃... ၇၄... ၇၅... ၇၆... ၇၇... ၇၈... ၇၉... ၈၀... ၈၁... ၈၂... ၈၃... ၈၄... ၈၅... ၈၆... ၈၇... ၈၈... ၈၉... ၉၀... ၉၁... ၉၂... ၉၃... ၉၄... ၉၅... ၉၆... ၉၇... ၉၈... ၉၉... ၁၀၀...

၃၆... ၃၇... ၃၈... ၃၉... ၄၀... ၄၁... ၄၂... ၄၃... ၄၄... ၄၅... ၄၆... ၄၇... ၄၈... ၄၉... ၅၀... ၅၁... ၅၂... ၅၃... ၅၄... ၅၅... ၅၆... ၅၇... ၅၈... ၅၉... ၆၀... ၆၁... ၆၂... ၆၃... ၆၄... ၆၅... ၆၆... ၆၇... ၆၈... ၆၉... ၇၀... ၇၁... ၇၂... ၇၃... ၇၄... ၇၅... ၇၆... ၇၇... ၇၈... ၇၉... ၈၀... ၈၁... ၈၂... ၈၃... ၈၄... ၈၅... ၈၆... ၈၇... ၈၈... ၈၉... ၉၀... ၉၁... ၉၂... ၉၃... ၉၄... ၉၅... ၉၆... ၉၇... ၉၈... ၉၉... ၁၀၀...

u

u

f

u

a

Handwritten Burmese text on page 60, consisting of approximately 25 lines of script. The text is densely packed and includes several marginalia or annotations in smaller characters.

uak 1

mir 4

sdaka

gut

bu

geunt

d

Handwritten Burmese text on page 61, continuing from page 60. It features approximately 25 lines of script with various marginalia and annotations.

Handwritten marginalia on the left side of page 61, including the word 'milla' and other characters.

uak 1

mir 4

d

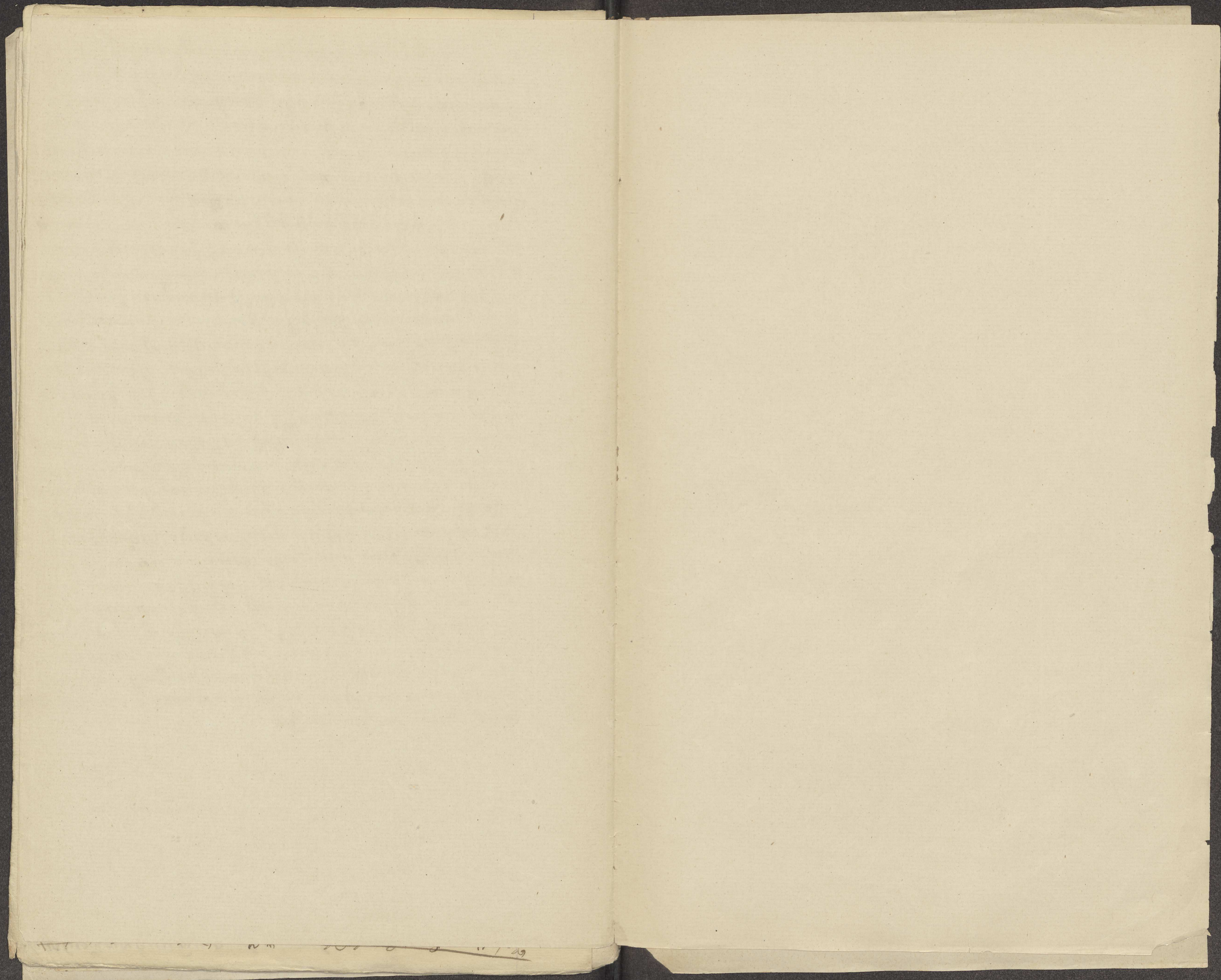
သောရတု... ဟော... မိတ္တ... ဝိဇ္ဇာ... စိတ္တ... ဘူတ...

၃
၄
၅
၆
၇
၈
၉
၁၀
၁၁
၁၂
၁၃
၁၄
၁၅
၁၆
၁၇
၁၈
၁၉
၂၀

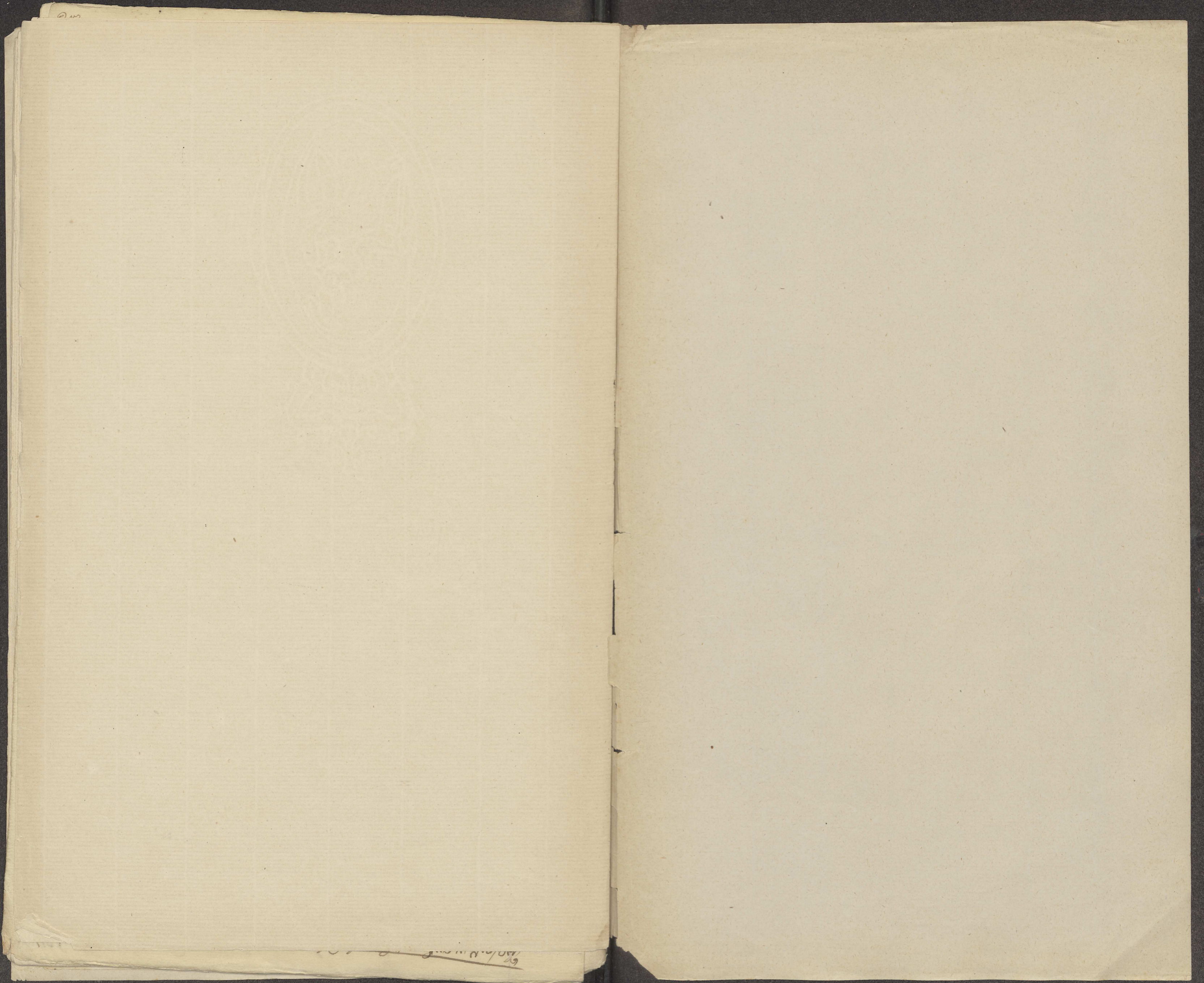
၈၈ ဝ
၉၀ ၁၀၀
၂၄ ဝ
၅၂
၇၅
၉၈
၁၂၅

အစ... ဘူတ... ဝိဇ္ဇာ... စိတ္တ... ဘူတ... မိတ္တ... ဝိဇ္ဇာ... စိတ္တ... ဘူတ...

၂၄
၅၂
၇၅
၉၈
၁၂၅



1871



100

100/100/100