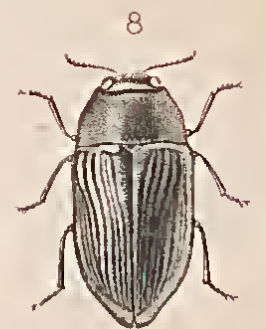
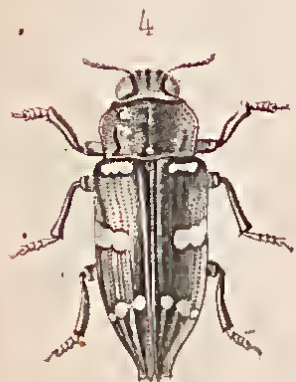
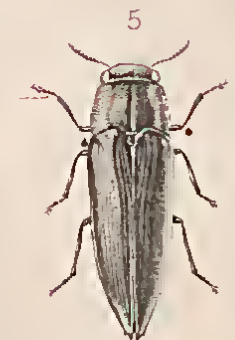
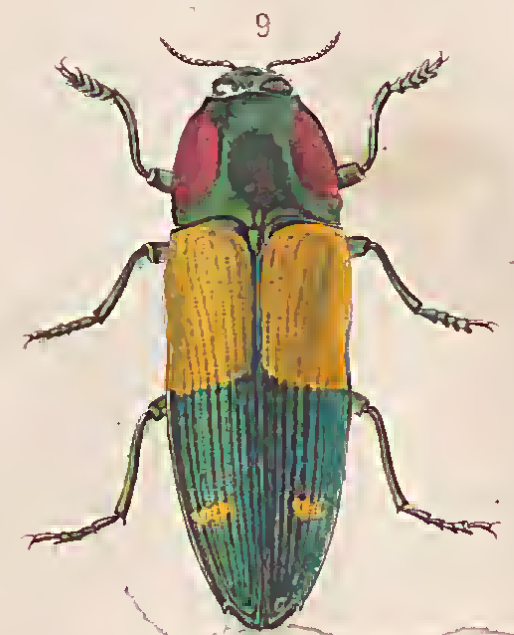
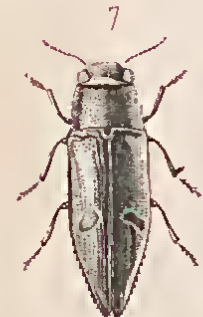
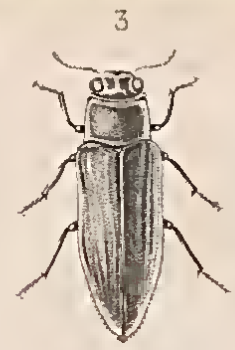
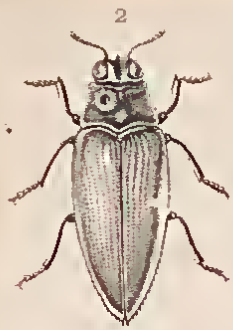


*Schizanthus* *Misgonyx* *Serris*

from Victoria is  
retundissima



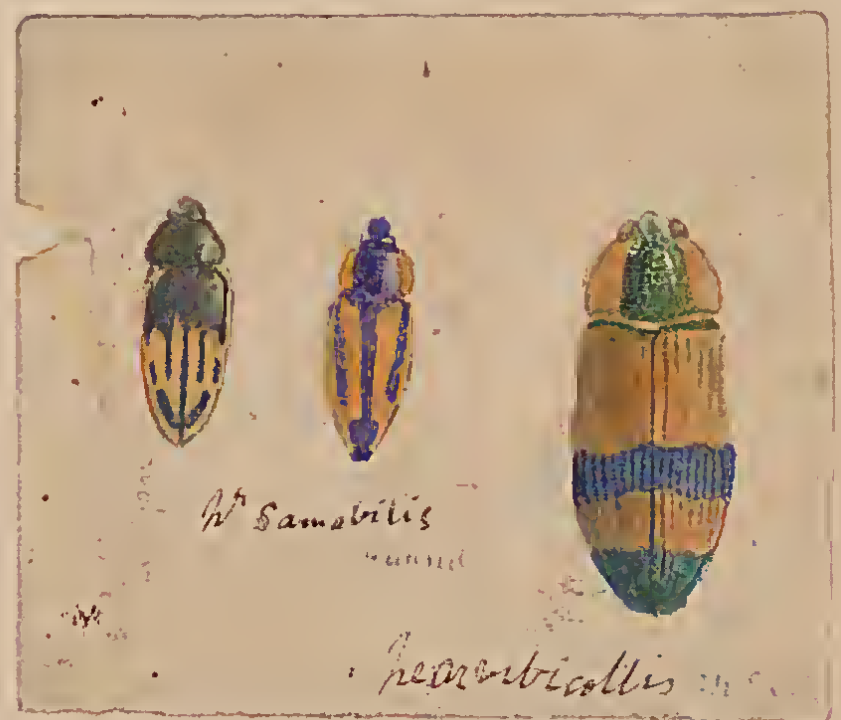
J. Myrcator p<sup>l</sup>

- 1. Asemochrysus rugulosus, H. Deyrolle
- 2. Epidelus Wallacei, Thoms.
- 3. Aprosomus rufifrons, H. Deyr.
- 4. Dicercomorpha interrupta, H. Deyr.

- 5. Exagistus igniceps, H. Deyrolle
- 6. Phrixia filiformis, H. Deyr.
- 7. Diceropygus maculatus, H. Deyr.
- 8. Philanthaxia curta, H. Deyr.

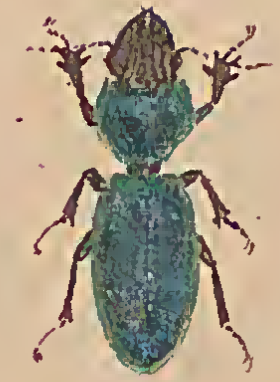
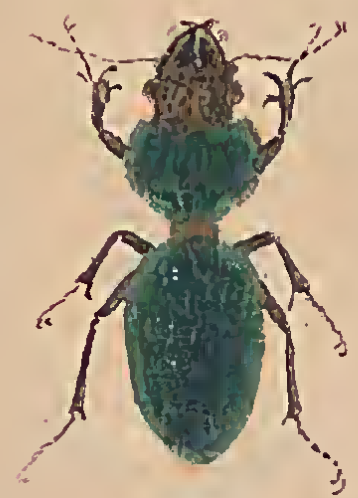
9. Calodema Wallacei, H. Deyrolle

Corbié sc.





Lamprima Muelleri ♀







Norman Town



*Etheaphyllus* <sup>Æ</sup>*Encipennis*, Thoms.

Duck Island



Richmond River; Q. & V.  
*NATALIS TITANUS*, Thoms.



Queenstown



*Petalodes Laminosus*, Thoms. WA



*Coryphillus*  
*Fortnumi*, Hope.



*Cucujus*



*Megamerus Kingii*, W.S. Macleay. Cape York



*DeBorjae Flavigenuis*, Thoms. WA



Cardwell.



*Lissobes*  
Cleveland Bay



Port Mackay



*TROX GIGAS*, Starbuck. South Australia



*Zophrosia Georgii*, W.S. Macleay.

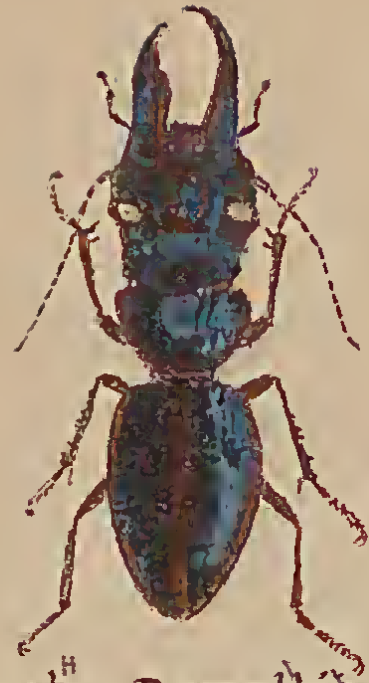


*Euraiphus Fasciculatus*, Shuckard.

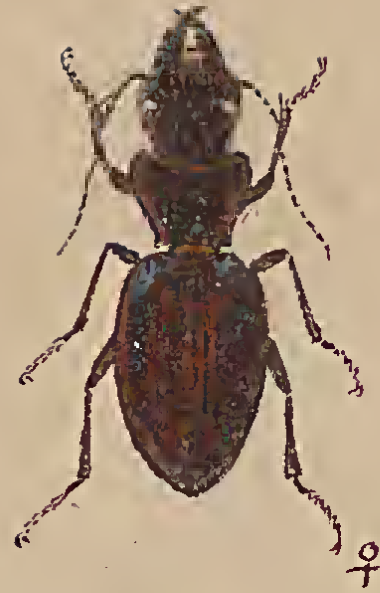




*Necrodes osculaus*  
Queensland



*Mecynognathus damelli* ♂  
Queensland Macleay



♀



Queensland



*Catadromus elseyi*, White.  
Queensland



SCHÆTERI, Schreb.  
*Hyperion schæteri*  
N. S. Wales



NOCTIS, Newm 1842.  
*Gigadema titanum*, Thoms. 1859.  
Queensland



Princess Charlotte bay Queensland

1871

1871

1871

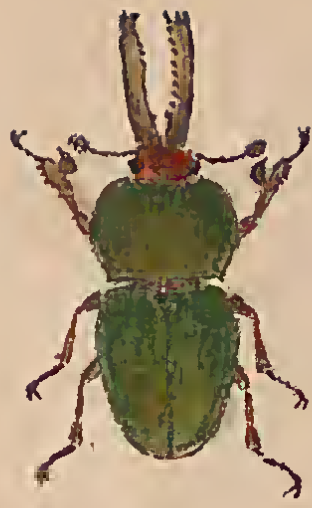
1871

1871

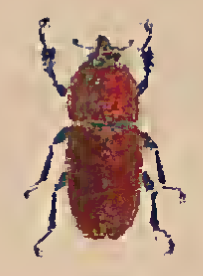








NEOLamprima Mandibularis, Mady.  
Queensland



♀



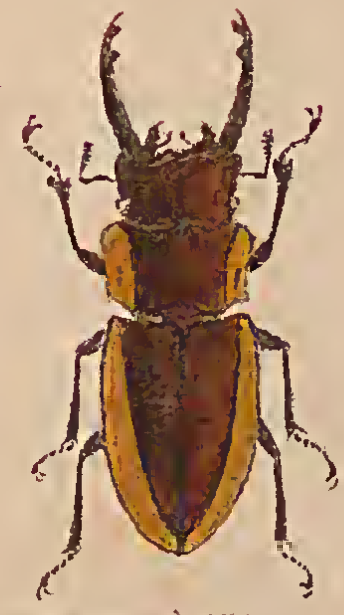
Phalacrognathus Mulleri ♂  
Queensland Mady.



Queensland ♀



Queensland

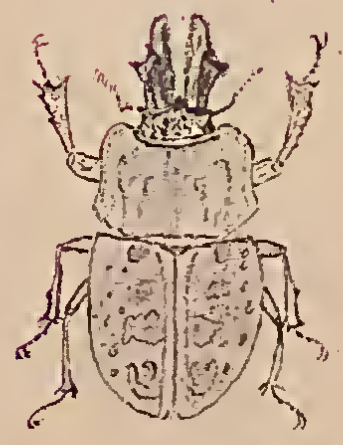


syn. (Metapodontus) 1870.  
Queensland

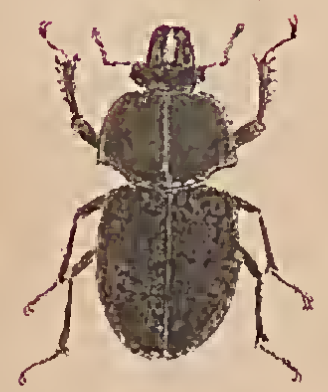
Cladognathus forbesensis,  
1848 Dejean.



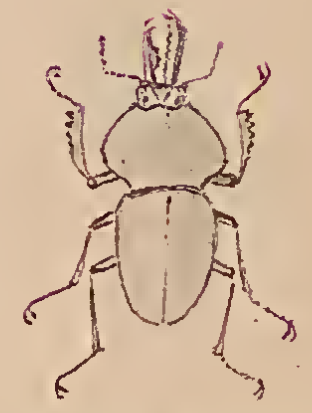
(Lissotes) Howitti  
Victoria Westw.  
Lissapterus howittianus, Westw.



NEBULOSUS, Mady.  
Rhyssonotus (Foreolatus)  
N.S. Wales



Rhyssonotus Jugularis,  
Victoria Westw.

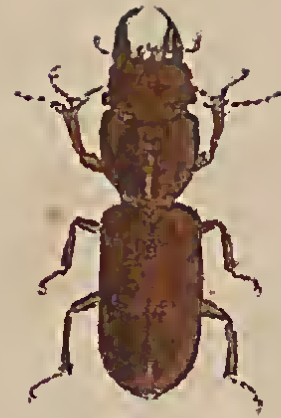


Cacostomus Squamosus, Mady.  
Queensland





Victoria



Victoria



Western Australia



Cookdown Queensland



Rockhampton Queensland



*Scaraphites crenaticollis*, Macleay.  
Victoria



*Scaraphites humeralis*, Casteln.  
West. Australia



Coopers creek



*Eurycephus titanus*, Swane.  
McDonnell ranges S. Aust.



Victoria





Stig<sup>d</sup> princeps  
Western Australia



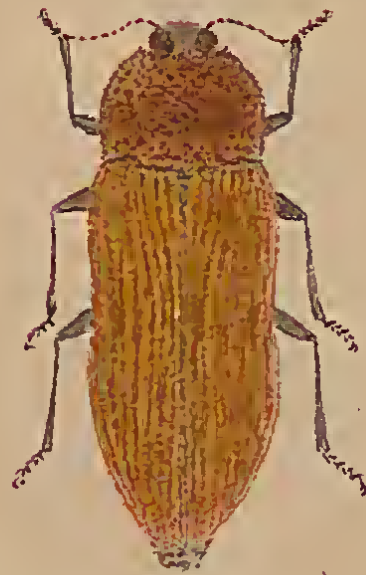
Cyria  
Queensland



Stig<sup>d</sup>  
Cairns. Queensland



Stig<sup>d</sup>  
Western Australia



Stig<sup>d</sup>  
South Australia



Stig<sup>d</sup> donovani Lepel Gony.  
Western Australia



Stig<sup>d</sup>  
N. S. Wales



Stig<sup>d</sup> testaceipennis  
Western Australia







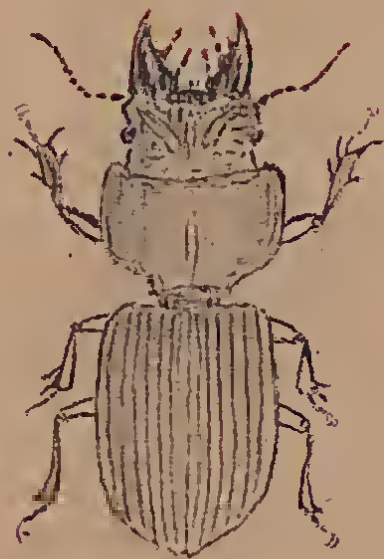
*Teissera Foveola*  
~~*Xixuthus myctitorax*~~  
Queensland



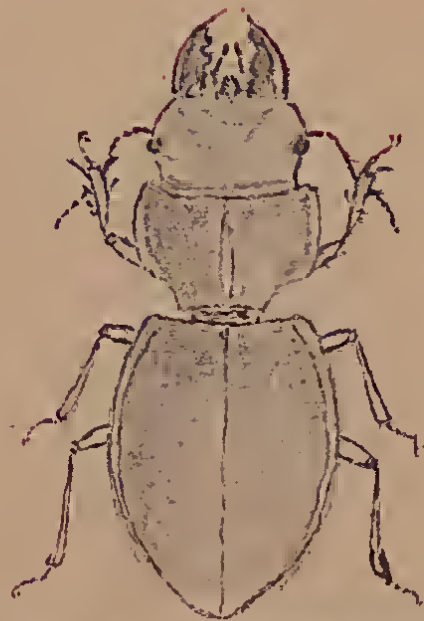
*Agriarionne gemella*, Pass.  
N.S. WALES & Queensland



N.S. WALES



*Scaraphites gigas*, Casteln.  
W. Australia

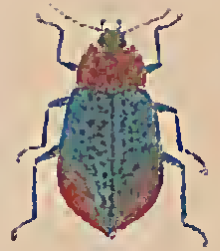


*Euryseaphus minor*, Macleay.  
*Scaraphites Waterhousei*  
W. Australia



*Tetralobus Australasicus*, Gory.  
South Australia





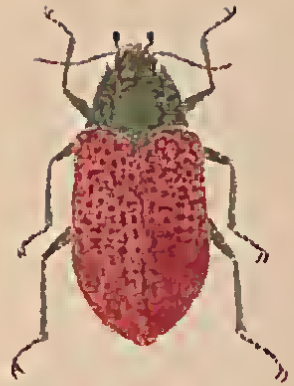
s. Parz.

Queensland

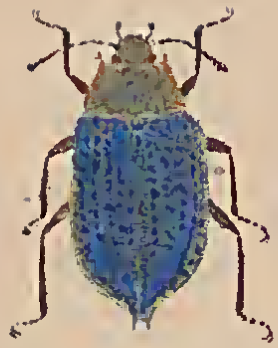


Megamerus Kingi, *W. M. Kirby*

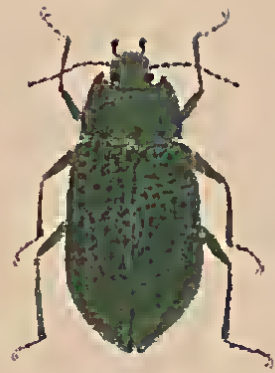




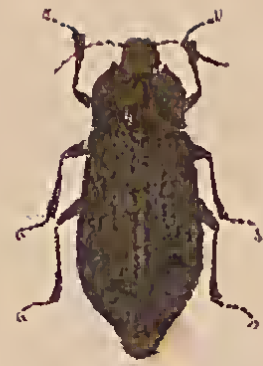
Cyphaleus  
Queensland



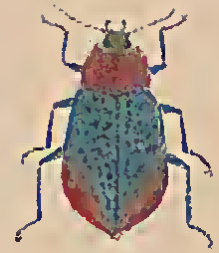
Cyphaleus Mixstersi, *Sav.*  
Queensland



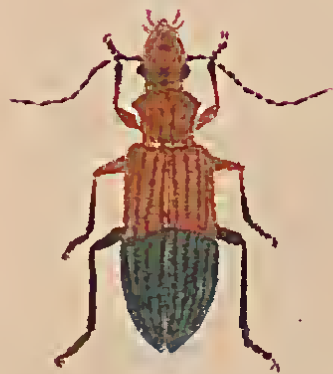
Queensland



Lepispilus stygianus, *Sav.*  
Victoria



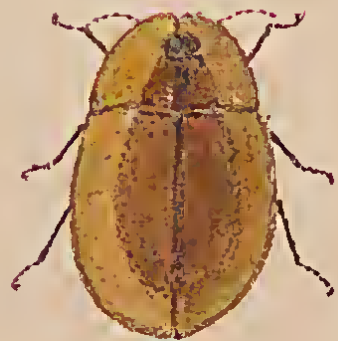
Queensland



Agasma semicrudum, *Newb.* *Nectodes*  
New South Wales



Queensland



Helæus princeps, *Hope.*  
West Australia



Megamerus mandibularis  
West Australia



Megamerus Kingi, *W. Macleay*





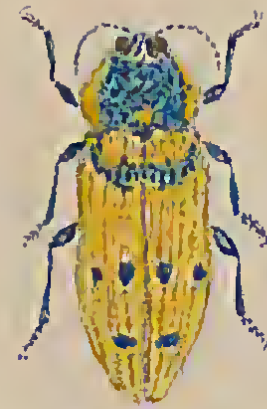
Stig<sup>d</sup>  
N. S. Wales



Stig<sup>d</sup> rectipennis  
West Australia



Cyria vitigera, Latr. & Geay.  
West Australia



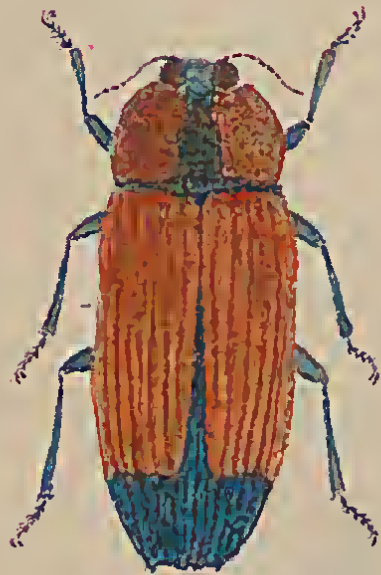
Stig<sup>d</sup> Yarrelli  
South Australia



Cyria tridens, Feltw.  
Queensland



South Australia



Stig<sup>d</sup> latithorax, Thom.  
Queensland



Stig<sup>d</sup> sulphuripennis  
Victoria



Stig<sup>d</sup> Amabilis  
Perth. W. A. Saund.



Stig<sup>d</sup> Flavocincta, Latr. & Geay.  
West Australia.







Stig.  
West Australia



Stig.  
West Australia.



Stig.  
geraldton  
W.A.



W. Australia.



W. Australia



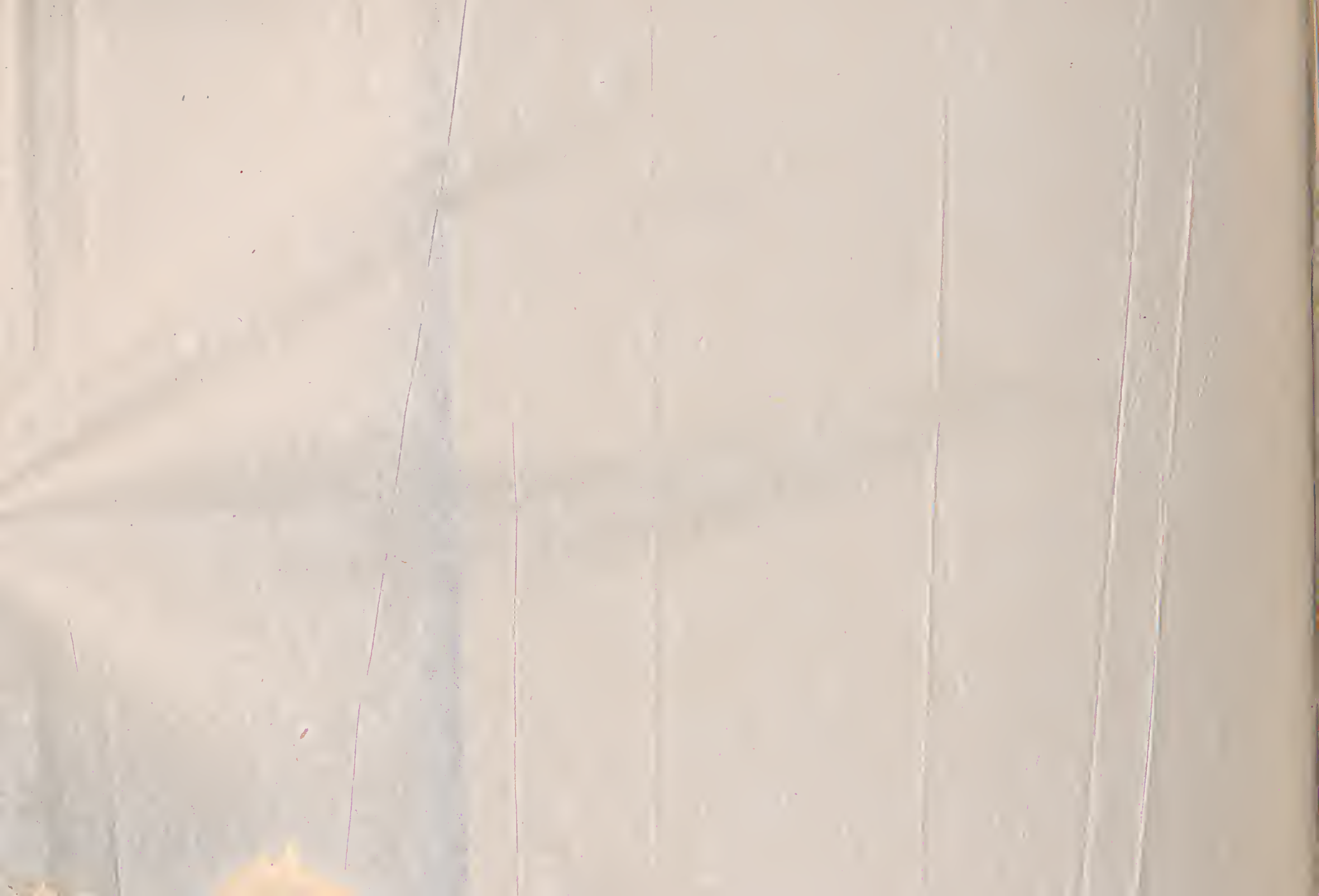






















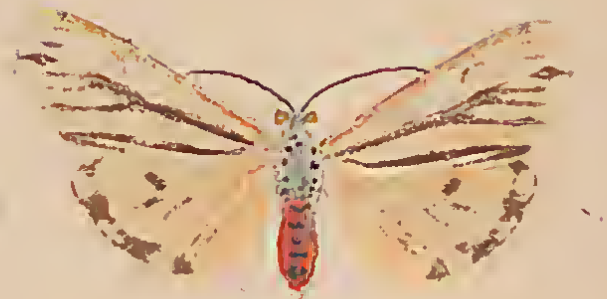












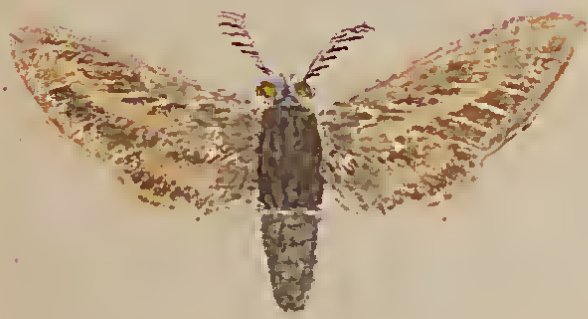
















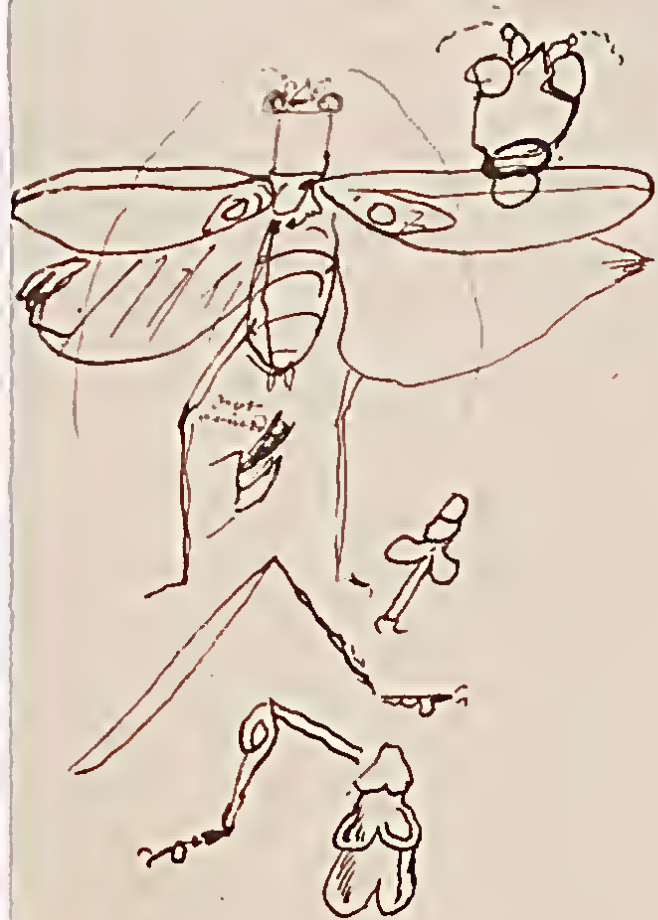








*Phaneroptera (Linn.)*







C<sup>p</sup> York. *Oryctes Mulleri*. Cape York. Arnheim's Land.







North Queensland.

Articles of antenna round, not flattened

like hollow tubes densely covered with hairs.

Entirely unlike any other palmated antenna

*Aprosictus Duivenbodei* (Kemp)

(p)



North Queensland

*Anatisis* - new.



New South Wales  
near *Anatisis*, in Brit. Mus.



Interior of Continent  
near *Anatisis*, new.

Mrs Span

Rooke's Farm

West Drayton

Middlesex

Compared with British Musc. specimens  
by Mrs Span for Mr. Dunsbury.



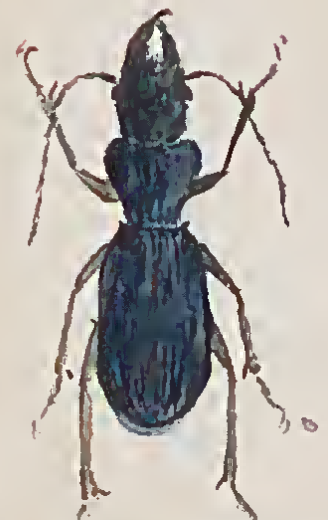
*Neolamprina Duboulayi*  
Cardwell



*Catadromus Elseyi*: Normanton



*Notonomus Pterostichus Regalis*, N.S.W.



*CYANEA*, Castles.  
*H<sup>m</sup> Episcopalis* N.S.W.



*S<sup>m</sup> Superba* Brisbane.



N. Australia



*Stig<sup>m</sup> Vinculata*  
Rockhampton



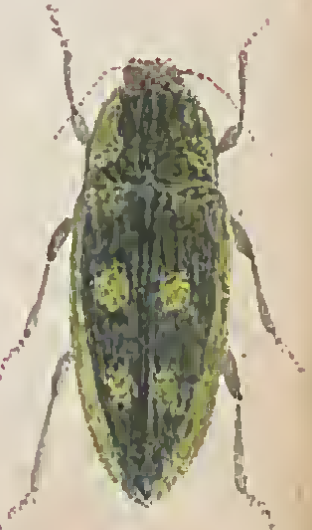
*Lo<sup>m</sup> Cinnamomea* Ross  
Cairns



N.S.W



N.S.W



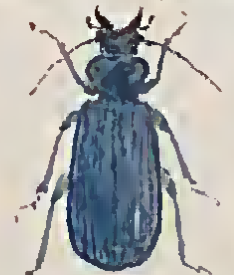
*Chalcotenia quadrisignata*.



N.S.W.



N.S.W.  
*S. Maculipennis*



*Aenigma Iris*. N.S.W. & Q.



Melbourne.



Hopes Creek



Rockhampton



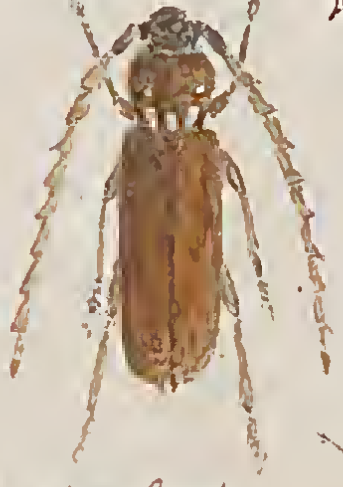
Manly Beach N.S.W.



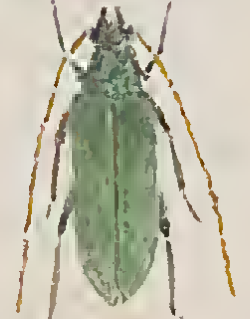
*Piosarthrus Marginellus*. N.S.W.



Cardwell



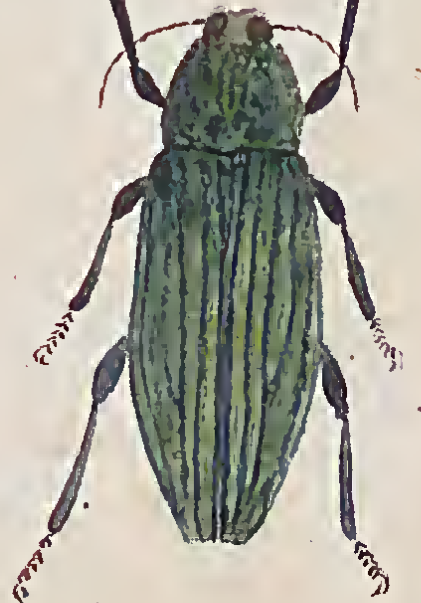
Cape York



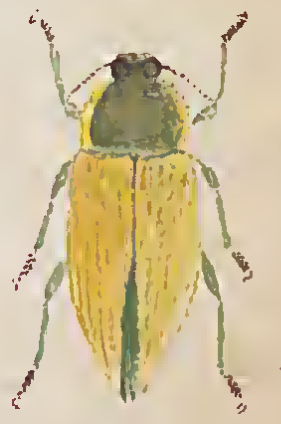
*Rhytidocera Australasie*  
Richmond R<sup>r</sup>.



Cook Town.



Interior of N.S.W.



N.S.W.



Blue Mountains, Rockhampton.



Rockhampton



Richmond River

This is wrong name  
as it corresponds  
with "viridicincta"

of Waterhouse

Trans. Soc. Ent. 1874.  
p. 543.

S.S. (silus)

CR

W

100 Frederick St  
FAR HWA



<sup>OPE</sup>  
*Aphnespita Sericata*  
Victoria



*Distichocera Mutator*  
Queensland



*Rhytiphora Dallasii* Pascoe.  
Western Australia



*Anaticis*  
Northern Territory  
*Allyticus*



*Rhydicocera Australasie*  
Richmond River



Queensland



*Clytanthus*  
Queensland



*Distichocera maculicollis*  
Queensland



*Distichocera Macleayi* Newm.  
New South Wales



Queensland



Cardwell



Cardwell



N. West. Australia.  
*Stig<sup>tr</sup> Tricolorata* Wolcott.



W. Australia



Clarence River



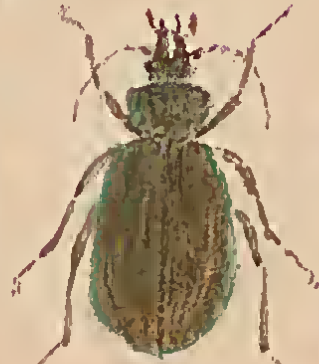
*Metaxamorpha Gloriosa*  
Cardwell



*Stigmodera*  
Sandhurst Vic<sup>t</sup>



Murray River



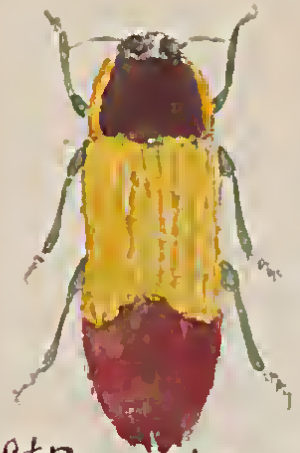
*Calosoma Australis*  
Thompson River



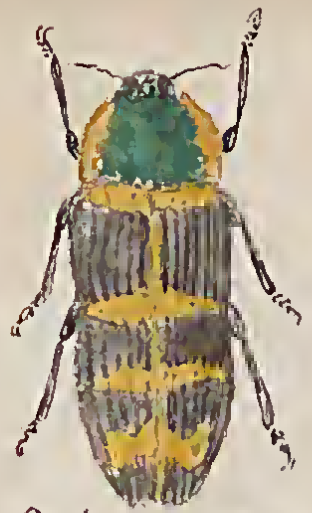
*Scaphites*  
Vic<sup>t</sup>  
The only sp. we need - New  
from Victoria is

6  
9  
9  
0  
0  
9  
6  
0  
0  
0

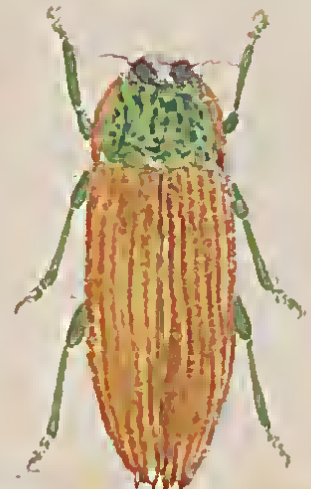
Hus  
moder



*St Pascoei* Saund.  
Vic



*St Lævicollis* Saund.  
W.A.



*St Lobicollis* Saund  
Stm Queensland



*Schizochina Muisyechii* Sarry

Drawings by W. Spurr from  
originals in Brit. Museum



*Pamborus alternans* Latr. Australia.  
 2000 feet up of quartz.

*Pseudomorpha laevissima*.  
 Australia.

*Silphomorpha suturalis*.  
 Australia. Quens.

*Silphomorpha* ~~is~~ *is*  
*Silphomorpha* *irrigata*  
 Casteln.

*Silphomorpha rufomarginata*  
Muls.



Head.



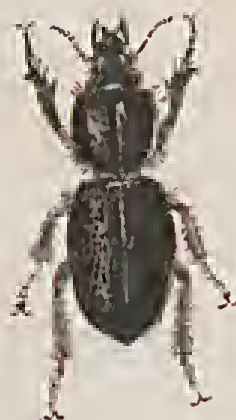
*Cephalodesmius armiger*.  
Muls.

*Mintophilus hovei* Hollandia  
*Mentophilus carinatus*,  
Fischer.

*Syndesmus cornutus*.  
 Fabr.

Australia.



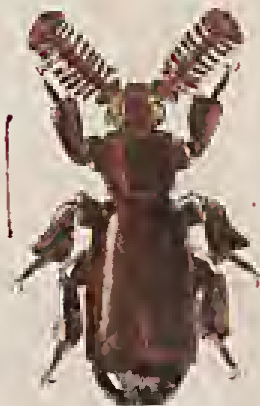


*Adelotopus dityscoides.*  
Neuv. <sup>Neuv.</sup>  
Australia.  
Poretrumi  
of Schae.

*Mystropomus subcostatus.*  
Chaud.  
Australia.

*Gnathoxys granulatus*  
Westw. <sup>70</sup>  
Australia.  
Bliss, or  
Macleay

**END**



*Derataphrus piceus.* Germ.

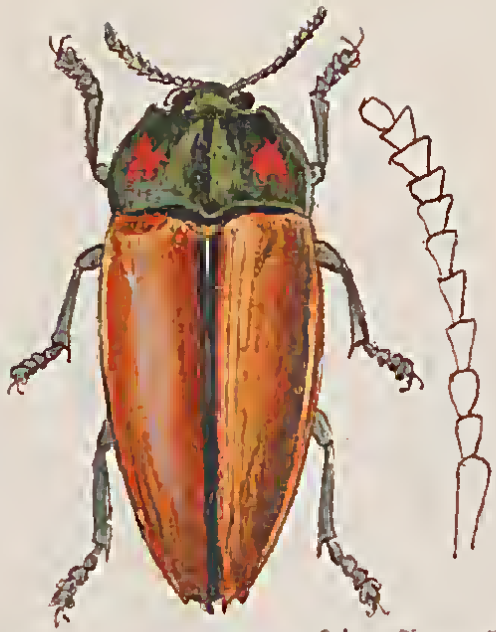
*Paromia dorcoides.*  
cannot find "Genus" in  
Australian "List"

*Anthropterus picipes*, Macleay  
*Cerapteris piceus*.

Genera.







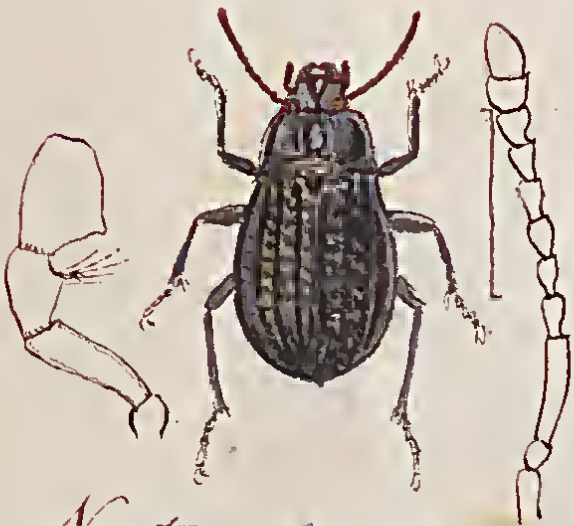
*Calodema regalis* Lapet. Gory.  
*Calodema Kirbyi* Hope.



*Dasygnathus dejeanii*  
W.S. Macleay.



*Pericoptus truncatus*  
Fabr.



*Nyctozoilus obesus*.



*Enccephalus submaculatus*.



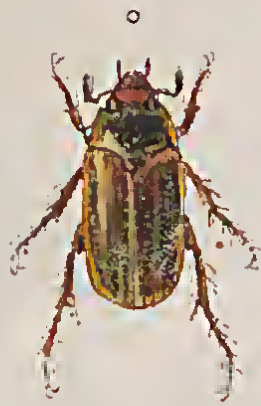
*Lenithicola australis*  
Boisd.



*Pterohelonus Walkerii* Bröme.

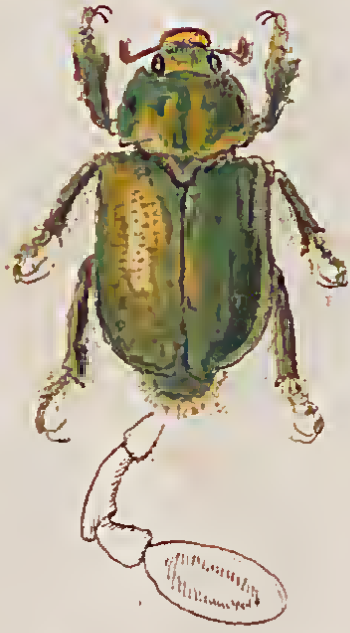
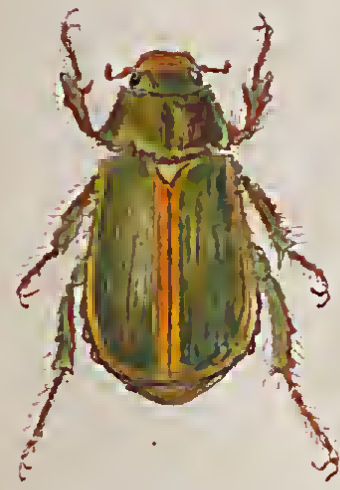


*Tanychilus striatus* Murray.



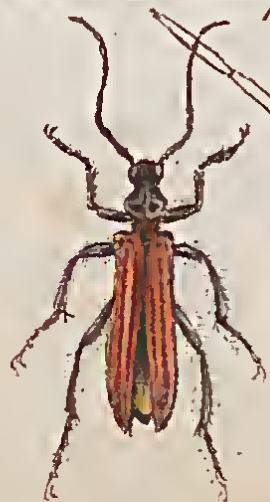
(*Colymbomorpha*) *lincata*. Blandin.  
Blanch 1850.  
CALONOTA  
Hoyer 1842.

*Colpochila nigella*.



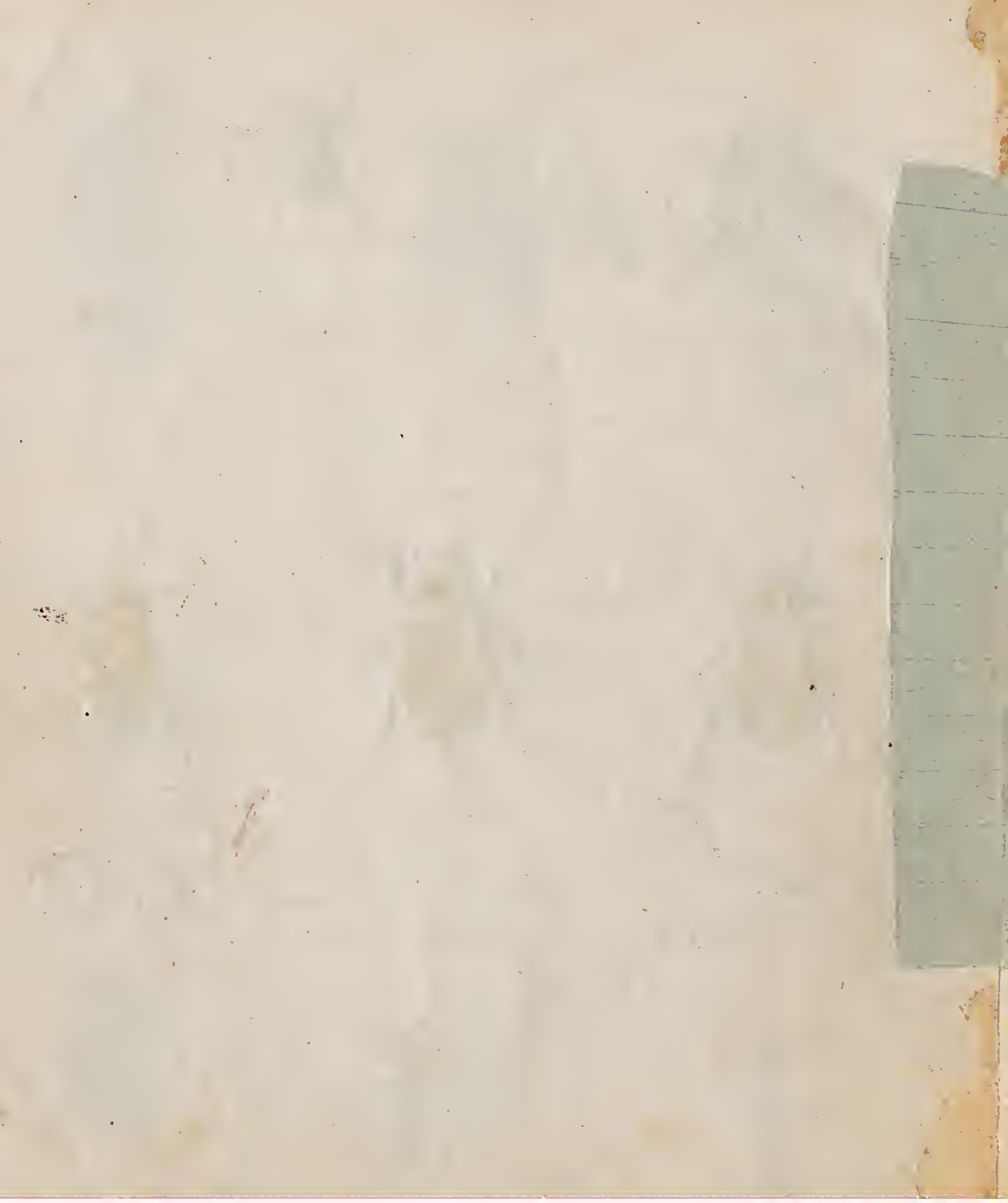
*Xylonychus eucalypti*.  
Boisd.

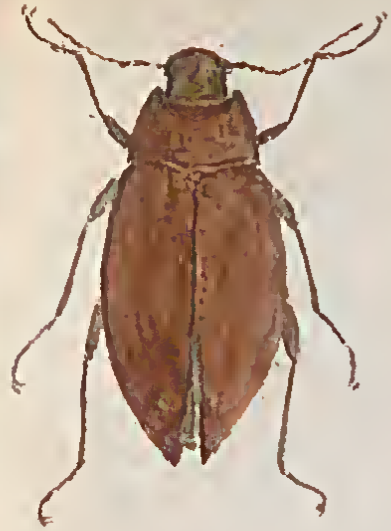
*EPICHRYSUS lampyrinus* Des.  
*Anoplostethus iamprismoides*.  
Wbst.



*Machidius hopianus*.  
Wbst.

*Pseudolyceus marginatus*.  
*Palæstra euripennis*.  
Costell.





Cardwell



Protopalus Dromedarius Boisd.  
Richmond River  
Stephens of Bohemia



Calloodes Grayanus White, C.  
P<sup>e</sup> Denison



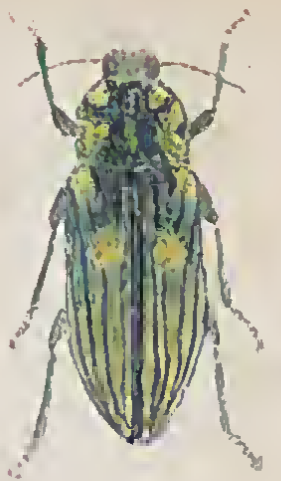
Radians  
W Australia



Cardwell



Chal<sup>e</sup> Impressor: Rockhampton  
Chal<sup>e</sup> Australasie Sand.  
N W Australia



Chal<sup>e</sup> Gigas Hope  
York W Australia



Chal<sup>e</sup> Lambertii Scop.  
Richmond River



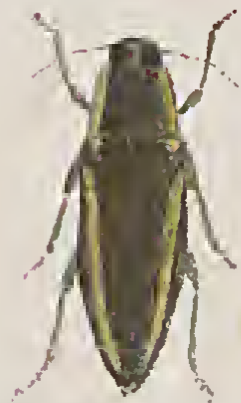
Cuprascens Waterh.  
Chal<sup>e</sup> Australis  
P<sup>e</sup> Denison



Rockhampton



Cyphogastra Farinosa Fabr.  
Cape York



Chal<sup>e</sup> Albivittis Hope.  
N.S. Wales



Chal<sup>e</sup> Pistor Sand.  
Cape York



Stigmodera Heros-rufa  
South Australia & S.W. Australia



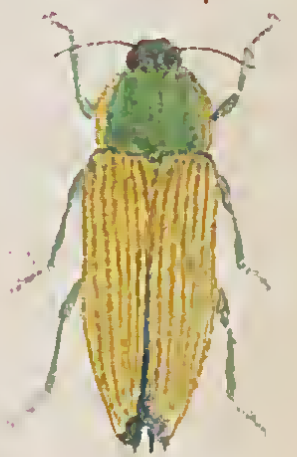
Stig<sup>e</sup>  
South Australia



Murray River



Gympie  
Stig<sup>e</sup> Latithorax



Stig<sup>e</sup> Jansoni Sand.  
Gympie



Brisbane







