

Historic, archived document

Do not assume content reflects current scientific knowledge, policies, or practices.



62. 61

MARKED

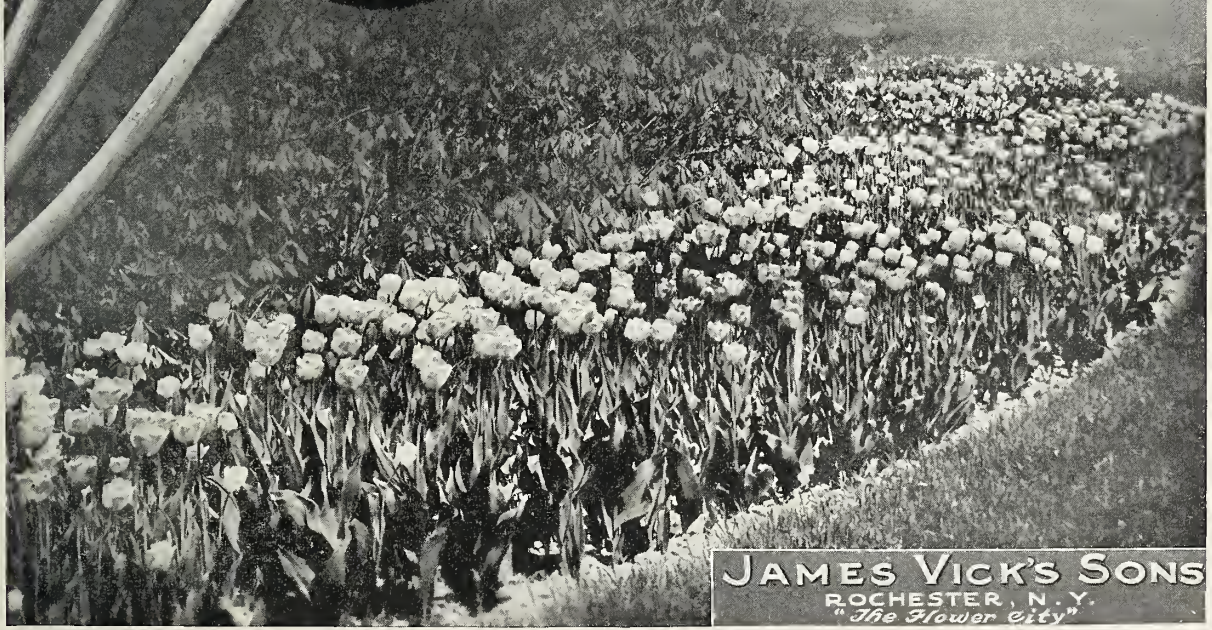
RECEIVED
APR 1 1 1924
Department of Agriculture

VICK'S

Garden and Floral Guide

Autumn Edition

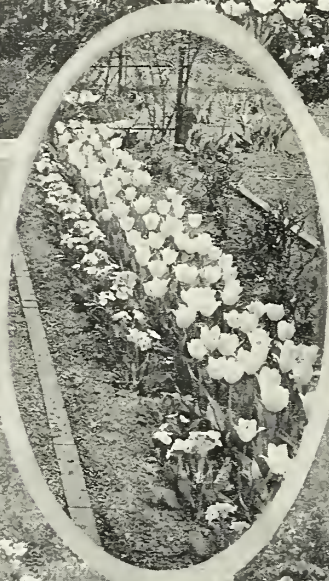
1923



JAMES VICK'S SONS
ROCHESTER, N. Y.
"The Flower City"



FORMAL BEDS
SINGLE AND
DOUBLE TULIPS



SINGLE EARLY TULIPS USED IN
BORDER WITH PRIMROSE EDGING



AN ATTRACTIVE
BORDER OF MIXED
TULIPS AND
HYACINTHS



INFORMAL TREATMENT OF
DARWIN LATE-FLOWERING TULIPS

*A few suggestions how to use
Fall Bulbs effectively for out-of-
door planting both in formal
and informal beds.*

THIS AUTUMN EDITION OF VICK'S GARDEN AND FLORAL GUIDE comes to you again as it has for generations to thousands of flower lovers everywhere to bear our heartiest greetings and to tell you of the many floral delights that can be yours at this season of the year. Soon nature will change her green summer garb for the glorious hues of autumn. It is an indication that she is preparing roots of trees, plants, and bulbs for the coming winter and spring; and it is a reminder that certain bulbs and plants should be set out this fall for early flowers next spring.

FALL BULBS BRING SPRING FLOWERS. Crocus, Hyacinths, Narcissus, Tulips, etc., should be planted now in order to have these glorious early flowers which add so much to the joyous spring season. All of these "Dutch" bulbs, as they are commonly called, are hardy and should be put into the ground before it freezes this fall. You can readily find where each kind is described in this book by referring to the Table of Contents below.

START HARDY PLANTS AND SHRUBS THIS FALL. Fall planting of hardy perennials, shrubs, trees, roses, etc., is becoming more and more popular as its many advantages become more generally known. By setting out plants, shrubbery and vines now the roots become thoroughly established in the soil and the plants are ready to burst into life at the first breath of warm weather and thus many weeks of growth are ordinarily gained over those set in the spring. In fact, some perennials like Peonies and Oriental Poppies are much more certain to succeed planted in the fall than in the spring. These plants are found in the latter part of the book commencing on page 19.

HAVE FLOWERS IN THE HOME ALL WINTER. Winter blooming bulbs and plants bring brightness and cheer into the home all through the long dreary winter months. Hyacinths, Narcissus, Tulips and many other bulbs shown in this book are easily grown indoors or "forced" as the florists say. The well known Paper White Narcissus, shown on page 13, requires only a dish of water and a few pebbles to hold the bulbs in place and can be brought into bloom in six weeks time. All the Polyanthus Narcissus and all named Hyacinths as well as many other varieties can be grown in a similar manner. Bulbs like Hyacinths and Tulips can be brought into bloom by the first of February and later. Full directions for potting and care of bulbs indoors, as well as their culture out of doors, accompany each shipment. Then there are all kinds of interesting and beautiful house plants available as shown on pages 16 to 19 to supplement the flowering bulbs, which are easy to grow and will live and bloom in the house for years. By carefully selecting varieties, one can have something in bloom all winter long and thus bring sunny Florida into one's own home.

TABLE OF CONTENTS

	Pages		Pages		Pages
Hyacinths	2-4	Breeder Tulips	11	Hardy Shrubs and Vines	25-26
Single Early Tulips	5-6	Narcissus, Daffodils, Jonquil.	12-13	Roses	27-28
Double Tulips	6	Crocus, Freesias, Callas	14	Fruit Trees and Bushes	29-31
May-Flowering or Cottage Tulips	7-8	Lilies	15-16	Lawn Grass Seed, Farm Seeds etc	32
Parrot Tulips	8	House Plants	16-17	Miscellaneous, Fertilizers, Insecticides, etc	
Darwin Tulips	9-10	Hardy Perennial Plants	19-24	Inside back cover.	

READ THIS BEFORE YOU MAKE OUT YOUR ORDER

NO ADDITIONAL CHARGE FOR POSTAGE

We prepay postage or express, unless otherwise expressly stated, within the first five parcel post zones. By this plan there is no possibility of being confused by a lot of intricate maps, scales, and schedules. In this respect we believe our system is the most simple and satisfactory possible to devise, and we do not know of any other concern, dealing in high quality bulbs, with prices as low as ours which prepays postage unless an additional remittance is forwarded. This applies to all points in United States within the first five parcel post zones from Rochester, which takes in all of the United States as far west as Minnesota, Iowa, Missouri, eastern Arkansas, and northern Mississippi. For points beyond the slight additional postage will be charged when shipment is made.

SAFETY IN SENDING MONEY

Money may be sent at our risk and expense if forwarded in the form of **Post Office or Express Money Orders, Bank Drafts or Registered Letters.** While we disclaim responsibility for the safe arrival of all other forms of remittance, our experience shows that it is steadily becoming safer to forward money and personal checks by mail. Where more convenient, remittances for small amounts may be made in postage stamps of small denomination.

By sending remittance with your order you reduce the cost of the transaction to a minimum and thus secure your goods at the lowest possible prices. Goods are sometimes sent C. O. D.,

but any method of collection, parcel post, express or otherwise involves some expense. No perishable items, which include plants and cold storage bulbs can be sent C. O. D., unless a partial payment accompanies the order to guarantee acceptance.

Charge accounts are a great convenience and we gladly extend credit to responsible parties when requested. When credit is desired, please refer, in sending your first charge order, to merchants with whom you have charge accounts, or give other references and information as to your financial responsibility as a basis for credit. This will save considerable delay. After all, the best and speediest way is to send remittance with your order.

REMEMBER

If you have occasion to refer to a previous order, placed with us, be sure to mention the post office to which the goods were shipped, the post office from which the order was mailed, and give the same name as in the first order.

2. Unless otherwise instructed we will ship the best and cheapest way, whether by mail or express. Therefore, you should mention both your post office address and your express station.

3. We do not pay export duties.

4. Customers ordering seeds by express or freight, should promptly advise in the case of delay or overcharges on shipments or in other similar matters. Very frequently we are able to adjust matters entirely satisfactory to all concerned. Our services are always at your command.



Vick's Exhibition Hyacinths

Hyacinths are great favorites for house culture. Their delicate rich perfume and splendidly shaped flower spikes make them ideal home decorations. Especially is this true of Vick's Exhibition Hyacinths which are described below. These are the choicest bulbs selected out of the crop of each variety by our Holland growers. We believe that the list below contains the finest varieties obtainable and we have spared no expense in securing the largest and best bulbs possible for this purpose. When well grown according to directions which accompany each package, they will send up well formed flower trusses the equal of any on exhibition in florists' show windows. These bulbs are equally good for out of door culture, although, of course, the smaller, less expensive sizes can be used in larger quantities for the same amount invested.

By Mail or Express prepaid: 20 cents each; \$1.95 per dozen

SINGLE RED AND ROSE

Garibaldi. Dark red; fine truss. One of the most popular reds
General DeWet (Pink Grand Maitre). Light pink, large truss new.
Gertrude. Rosy pink; large, upright spike; extra fine.
Lady Derby. Waxy pink. A great favorite with particular people.
Moreno. Waxy pink; large bells, extra good truss.
Queen of the Pinks. Lovely bright rosy pink; enormous well-shaped spike
Rose a Merveille. Blush rose; fine truss.

SINGLE WHITE

Arentine Arendse. Pure white; large truss; small bells, very early
Baroness Van Thuyl. Pure white; fine large truss.
Grande Blanche. Blush white; large bells and spike.
Grandeur a Merveille. Fine large truss of large bells.
Hein Roozen. A new pure white destined to take first place among whites.
La Grandesse. Extra fine pure white; large bells and grand spike.
L'Innocence. Extra fine spike of snow-white bells. Most popular white

SINGLE YELLOW

City of Haarlem. Large, pure bright yellow; large spike; extra fine.
Yellow Hammer. New pure golden yellow; large well-shaped spike; the best yellow hyacinth yet produced.

SINGLE BLUE AND PURPLE

Charles Dickens. Blue, shading to porcelain; handsome tall spike; excellent.
Enchantress. Beautiful porcelain blue.
Grand Maitre. Dark porcelain blue; grand spike of large bells.
King of the Blues. Rich dark blue; large compact spike.
Perle Brilliant. One of the best of the newer kinds; light blue.
Queen of the Blues. Clear light blue; fine spike of very large bells.

DOUBLE BLUE

Bloksberg. Clear porcelain; fine large spike.
Garrick. Extra fine dark blue, deep, rich, effective.
Van Speyk. New light blue; large compact spike; large bells.

DOUBLE RED AND ROSE

Chestnut Blossom. Blush pink. A charming delicate tint.
Le Grand Concurrent. Pale rose, shaded with pink; fine spike, large bells.
Lord Wellington. Extra fine bluish pink; large spike and bells.
Prince of Orange. Deep rose; fine spike.
President Roosevelt Beautiful deep pink or rose.

DOUBLE WHITE

Bouquet Royal. Pure white, yellow center; fine spike.
Isabella. Fine bluish white; grand spike and large bells. Excellent.
La Tour d'Auvergne. Pure white, large bells; extra fine spike; very early.
Prince of Waterloo. Pure white; large bells and truss.

DOUBLE YELLOW

Jaune Supreme. Rich, deep yellow, slightly salmon shaded; fine spike.

VICK'S HYACINTH COLLECTIONS

The bulbs for these collections we have grown in large quantities especially for this purpose, so that we are able to offer them at these very reasonable prices.

COLLECTIONS "A" and "AA", SINGLE HYACINTHS

L'Innocence, white.	Grande Blanche, bluish white.
City of Haarlem, bright yellow.	King of the Blues, dark blue.
General DeWet, light pink.	La Victoire, carmine red.
Gertrude, rosy pink.	Lady Derby, pale pink.
Grande Maitre, porcelain blue.	Queen of the Pinks, rosy pink.

Collection "A", 6 of above bulbs, our choice, postpaid, 75 cents

Collection "AA", all 10 of above bulbs, postpaid, \$1.00

COLLECTION "B", DOUBLE HYACINTHS

Chas. Dickens, light blue.	Lord Wellington, bluish pink.
Garrick, fine dark blue.	Non plus ultra, pure white.
Isabella, rosy white.	Prince of Orange, deep rose.

Collection "B", 6 large bulbs, postpaid, 75 cents
Both Collections, "A" and "B", postpaid, \$1.35
Both Collections, "AA" and "B", postpaid, \$1.50

Try one of our Hyacinth bulb collections shown above. They are splendid value and cover a wide assortment of varieties.

Vick's Named Hyacinths—Single and Double

A well grown bed of Hyacinths with their well formed flower trusses often reminds us of a company of elegantly uniformed soldiers standing quietly at attention. They are wonderfully adapted for formal beds in the garden because they grow so uniform in shape and size. For borders in front of shrubbery, they are very effective. The following list has been made up with unusual care and contains as complete an assortment of colors and types as it is possible to select out of hundreds of named varieties. They will give excellent satisfaction when planted in pots for indoor growing or in beds in the garden or lawn. In our opinion, the single varieties are in general preferable where the individual flowers are displayed as the trusses are more uniform in shape and borne on longer stems. Many prefer double varieties especially if potted and for use in beds where a mass of colors is desired.

Each, 18 cents; dozen \$1.65

Postage or Express Charges prepaid at above prices as far west as the Mississippi River.

By Express Collect per 100, \$9.75.

Not less than Six Bulbs of one variety will be sold at the dozen rate. Fifty bulbs, one variety, at 100 rate. Ask for Special Prices if larger quantities are desired

SINGLE RED AND ROSE

- Baron Van Thuyt. Rose, early.
Charles Dickens. Delicate pink.
Garibaldi. Brilliant carmine.
General De Wet. Light Pink; large truss, new.
General Pelissier. Bright carmine.
Gertrude. Rosy pink; large, upright spike.
Gigantea. Blush pink, large flowers and very large truss.
Lady Derby. Pale pink. Very large.
La Victoire. Brilliant carmine red.
Lord Macaulay. Bright rosy carmine; extra fine.
Moreno. Fine pink, large bell.
Norma. Light pink, large bells and fine truss.
Queen of the Pinks. Bright rosy pink.
Roi des Belges. Bright red; early, fine spike.
Robert Steiger. Deep crimson.
Rose a Merveille. Rose.

SINGLE WHITE

- Alba Superbissima. Pure white.
Albertine. Pure white. Early.
Arentine Arendse. Pure white. Very fine, new.
Baroness Van Thuyt. Flowers snow white; fine large truss; one of the best for any purpose.
General Vetter. White, tinged bluish; large well-shaped flowers; nice loose appearance.
Grandeur a Merveille. Blush white.
Graud Blanche. White.
Hien Roozen. New pure white; best yet.
La Grandesse. Fine snow white.
L'Innocence. Snow white; extra fine spike.
La Franchise. Waxy white. Large.
Madame Van der Hoop. Pure white, large bells.
Queen Victoria. Pure white.

SINGLE YELLOW

- City of Haarlem. Large bright, golden yellow; large spike.
Ida. Rich golden yellow. Early.
King of the Yellows. Deep yellow.
Obelisque. Fine pure yellow.
Yellow Hammer. Pure golden yellow; new.

SINGLE PURPLE

- Haydn. Lilac-mauve, large truss.
Sir Wm. Mansfield. Purplish mauve large truss.

SINGLE BLUE

- Charles Dickens. Bright blue shading to porcelain blue.
Czar Peter. Silvery blue.
Enchantress. Porcelain. Extra.
Grand Lilas. Light porcelain.
Grand Maitre. Dark porcelain blue. Most popular blue.
King of the Blues. Rich, dark blue.
La Peyrouse. Light lavender.
Perle Brilliant. New light blue superior to Chas. Dickens.
Queen of the Blues. Light blue.
Schotel. Light lavender; extra fine.

DOUBLE RED AND ROSE

- Bouquet Royal. Salmon pink.
Bouquet Tendre. Carmine rose, early. Very effective in border.
Chestnut Blossom. Blush pink.
Grootvoorst. Light rose; large truss.
Kohinoor. Deep rose; large spike; new.
Lord Wellington. Extra fine pink.
Noble par Merite. Deep rose, early.
Prince of Orange. Dark rose, fine.

DOUBLE WHITE

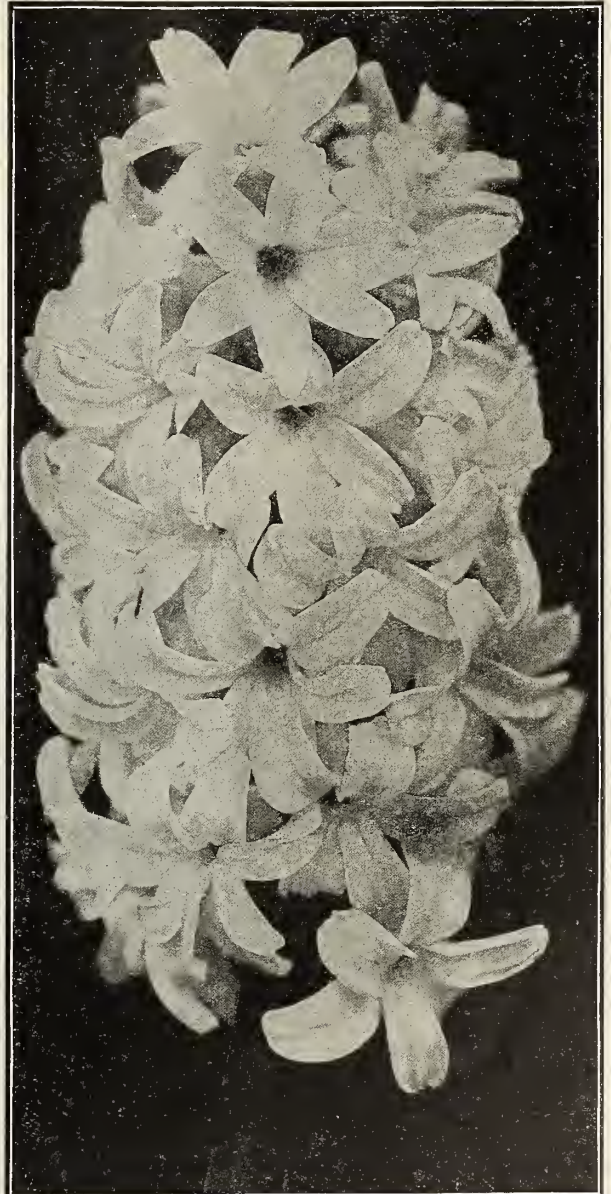
- Bouquet Royal. Pure white, yellow center.
Grootvoorstin. Creamy white, large bells.
Isabella. Rose white.
La Tour d'Auvergne. Pure white, large bells; very early.
La Virginité. Blush white; early.
Prince of Waterloo. Waxy white, large bells.
Non Plus Ultra. Pure white.

DOUBLE BLUE

- Bloksberg. Clear porcelain blue.
Crown Prince of Sweden. Violet blue.
Garrick. Lilac blue; fine spike, large bells.
General Kohler. Large spike.
Van Speyk. Light blue; compact spike, new.

DOUBLE YELLOW

- Jaune Suprême. Deep yellow, fine.
Sir Rowland Hill. Pure Yellow



L'INNOCENCE—SINGLE WHITE HYACINTH

We take great pride in the Hyacinths we supply, - fine large bulbs, sure to give unbounded satisfaction



MINIATURE HYACINTHS IN POTS

Vicks Hyacinths In Separate Colors

These Single and Double Hyacinths in separate colors we consider excellent value. We recommend these bulbs especially for those who do not care for particular named varieties. Each color is made up of named varieties, of which our growers have a surplus. So popular are these bulbs, especially for out-door planting, that we have frequently had orders for a thousand each of several colors for private lawns and gardens. Immense quantities of them are also used for in-door potting. When, however, the finest specimen pot-plants are desired, the named varieties listed on Pages 2 and 3 are recommended. Remember that the quality of stock offered on this page is of the same high-grade that we have catalogued for years.

Special Prices

Single Varieties

Each, 13c.; doz., \$1.25, postpaid. By express or freight collect, per hundred, \$6.40

Dark Red
Dark Blue
Light Blue
Pure White
Blush White
White, all shades
Rose and Pink
Red, all shades
Blue, all shades
Yellow, all shades
Vick's Special Single
Mixed of the above colors

Double Varieties

Each, 14c.; doz., \$1.35, postpaid. By express or freight collect, per hundred, \$6.75

Yellow
Dark Red
Dark Blue
Light Blue
Pure White
Blush White
White, all shades
Red, all shades
Blue, all shades
Rose and Pink
Vick's Special Double
Mixed of the above colors

Miniature Hyacinths

These are small bulbs, single flowering, and excellent for growing in pans, pots or boxes in the house, or in beds in the open ground. They bloom early and very freely. They may be planted close together with charming effect. Splendid value for the price.

SINGLE RED AND ROSE

Baron Van Thuyt. Light rose.
Gen. Pelissier. Deep red; early.
Gertrude. Rosy pink.
Gigantea. Pale rose.
La Victoire. Carmine red.
Morena. Beautiful pink.
Norma. Pale waxy pink.
Queen of the Pinks. Rosy pink.
Roi des Belges. Bright red.

SINGLE WHITE

Arentine Arendse. Pure white.
Baroness van Thuyt. Pure white.
General Vetter. Blush white.
Grande Blanche. Blush white.
Hein Roozen. Best new white.
La Franchise. Blush white.
La Grandesse. Pure white.
L'Innocence. Pure white.

SINGLE BLUE

Charles Dickens. Blue tinged lilac.
Enchantress. Porcelain blue.
Grande Maitre. Dark porcelain blue.
King of the Blues. Dark blue
La Peyrouse. Porcelain.
Queen of the Blues. Porcelain blue.
Schotel. Light blue.

SINGLE YELLOW

King of the Yellows. Pure yellow.
Yellow Hammer. Golden yellow.

Our Prices:

By Mail or Express prepaid.

Each, 10 cents;

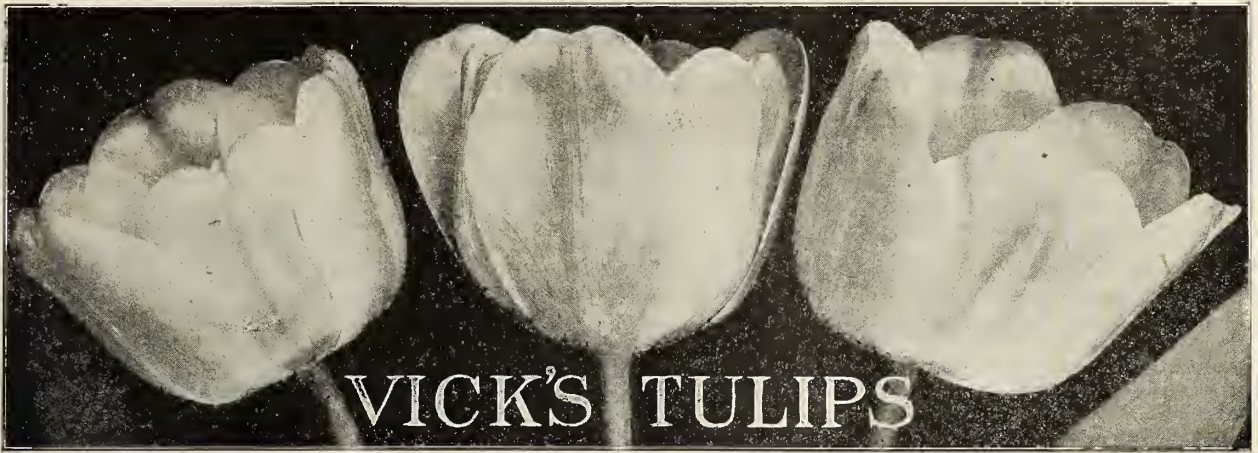
Per dozen, 90 cents

Per hundred, \$4.60, by Ex. Col.



A BED OF VICK'S SEPARATE COLOR HYACINTHS

Make the cold, dreary winter months bright and cheerful inside with an abundance of blooms from winter-flowering bulbs.



EARLY-FLOWERING SINGLE TULIPS

The gay and dashing single early varieties with their brilliant hues come so soon after the dull cold winter months that they make friends everywhere. No matter how popular the later, larger flowering varieties become, the single early tulips have a place in the affections of all flower lovers that can not be displaced. For out of door planting, we like to see single tulips planted in borders or in beds, each color by itself. Even where space is limited, it is far more effective to have each color separate. The bulbs may be left in the ground after blooming and bedding plants set in the same bed without disturbing the tulip bulbs. For indoor growing or "forcing" single early varieties are the most popular and the easiest to grow of any of the tulips. Nothing will furnish greater satisfaction than one or two pots of a number of varieties of these brilliantly hued flowers, each pot containing from six to twelve flowers.

In the following list, we have indicated by the term "forcer" or "forcing", those varieties which are best suited for indoor culture. We have found by experiment that the following list contains the very choicest of several hundred known named kinds.

At prices below we prepay postage as far west as Minnesota, Iowa and Missouri. (Fifth Parcel Post Zone.)

Six bulbs of one variety at dozen rate, fifty at hundred rate.

Varieties marked E are the earliest to bloom; Er, following; E2, the latest. D, stands for dwarf; T, tall; M, medium height.

Artus. (Er) D Flowers large, beautiful bright red, making a splendid show when planted alone or with other colors. Outdoors only	Each	doz	100	Herman Schlegel. (Primrose Beauty)(Er) M Sulphur yellow, deepening to a slight orange shade.	Each	doz	100			
8	60	\$3	50	7	55	\$3	10			
Belle Alliance. (Er) D A finely formed flower, bright scarlet in color. One of the best for bedding as it lasts a long time; also one of the best for pot culture.	10	75	4	60	Joost Van Vondel. (Red) (E) D A new cherry red, white feathered, suffused with delicate rose on outside. Forces readily.	8	60	3	60	
10	75	4	60	8	60	3	60			
Chrysolora. (E) M Flowers a fine, rich golden-yellow of large size. Excellent for bedding on account of its long keeping qualities.	8	65	3	70	Keizerskroon. (Er) T Bright scarlet, broad yellow margin. A popular variety for bedding and potting.	10	80	5	00	
8	65	3	70	10	80	5	00			
Cottage Maid. (Er) D Rose and white; one of the most charming variegated varieties. Especially for bedding.	10	75	4	50	King of the Yellows. (E) T Deep golden yellow, well shaped flower round on top. One of the earliest forcers.	8	65	3	70	
10	75	4	50	8	65	3	70			
Cramoisi Brilliant. (Er) T Large flowers of brilliant, dazzling red; very effective for bedding. Lasts well.	8	65	3	70	Lady Boreel. (Joost Van Vondel, white) (E) D New snow-white, enormous show flower for exhibition purposes. Splendid for pots.	10	75	4	60	
8	65	3	70	10	75	4	60			
Crimson King. (Er) M Fine bright scarlet yellow at base. Excellent bedder.	8	60	3	40	L'Immaculee. (E) M Pure white, good.	10	75	4	50	
8	60	3	40	10	75	4	50			
Duchesse de Parma. (Er) T Large well formed flowers, orange-red with yellow border around outer edge.	10	75	4	50	La Reine. (Er) M (Queen Victoria) A splendid variety for either bedding or house culture. Beautiful rosy white.	7	50	2	80	
10	75	4	50	7	50	2	80			
Duc De Berlin. (E) D Light red with broad golden yellow border; very early. One of the best for forcing.	8	65	3	85	Pink Beauty. (E2) T Bright rosy pink, shading to blush white. Very large beautifully shaped flower, becoming very popular.	13	1	25	7	50
8	65	3	85	13	1	25	7	50		
Dusart. (Er) D Dark scarlet, recommended especially for bedding as it lasts a long time.	9	70	4	20	Pottebakker White. (E) T Splendid for house or bedding. Flower large, pure white.	10	80	4	90	
9	70	4	20	10	80	4	90			
Flamingo. (E2) M Beautiful pink and white. The large round flowers open light and deepen with age to a brilliant rose. One of the best new varieties; good for either forcing or bedding	12	1	00	6	20	Pottebakker Scarlet. (E) T Glowing cardinal scarlet. One of the older favorites.	9	70	4	20
12	1	00	6	20	9	70	4	20		
Fred Moore. (Er) M Bright orange, scarlet shaded; very handsome; new.	8	65	3	70	Pottebakker Yellow. (E) T Occasionally striped red.	9	70	4	20	
8	65	3	70	9	70	4	20			
Gold Finch. (E) D Pure golden yellow, sweet scented, excellent for forcing. Superior to the old favorite Yellow Prince; new.	9	70	4	00	President Lincoln. (Queen of Violets) (E2) M Handsome violet light edging; large showy flower.	8	65	3	85	
9	70	4	00	8	65	3	85			
				Prince of Austria. (Er) T Bright orange vermillion, one of the finest for forcing, also an attractive bedder.	10	75	4	60		
				10	75	4	60			
				Princess Helena. (E) D Beautiful new pure white; very early; strong stems.	8	65	3	85		
				8	65	3	85			

Single Flowering Tulips with their shapely graceful heads and brilliant hues are unsurpassed for beautiful border effects

EARLY FLOWERING SINGLE TULIPS, - Continued

Princess Marianne. (E) D Creamy white, delicately suffused with pink, shading to rose.	Each doz	100	Vermillion Brilliant. (E2) D Bright glittering scarlet, yellow base, large flower. Extra fine forcer or bedder	EACH	DOZ.	100	
Proserpine. (E) M Flowers carmine-rose, large and beautifully formed. Fine forcer .	8	\$ 65	\$ 3	70	12	\$1 15	\$ 7 00
Queen of the Netherlands. (E2) D Soft, rosy white, large globe-shaped flowers; splendid for forcing or bedding.	13	1	25	7	50		
Rose Grisdelin. (E1) D Soft rose, somewhat shaded with blush white. Fine forcer . . .	10	80	4	90			
Rose Hawk. (La Riene Maxima) (E1) M Extra large white flower, slightly edged pink. .	8	60	3	40			
Rose Luisante. (E2) D Beautiful deep silky rose. The finest rose Tulip yet produced. .	10	75	4	40			
Rosamundi. (E1) M Bright pink and white, large flowers.	13	1	25	7	60		
Thomas Moore. (E1) T An old favorite, bright orange sweet scented.	9	70	4	20			
	8	60	3	40			

Vick's Superfine Mixture of Tulips that will bloom at the same time, dozen, 55 cents; one hundred, \$3.00

First Quality Single Mixture.

Dozen, 50 cents, one hundred, \$2.80.

IN SEPARATE COLORS - UNNAMED.

White, pink, yellow, red, rose, variegated.

Each, 8 cents; dozen, 60 cts.; 100 \$3.25.

The above unnamed separate colors bloom at about the same time.

Vick's Double Tulips For Bedding and Potting

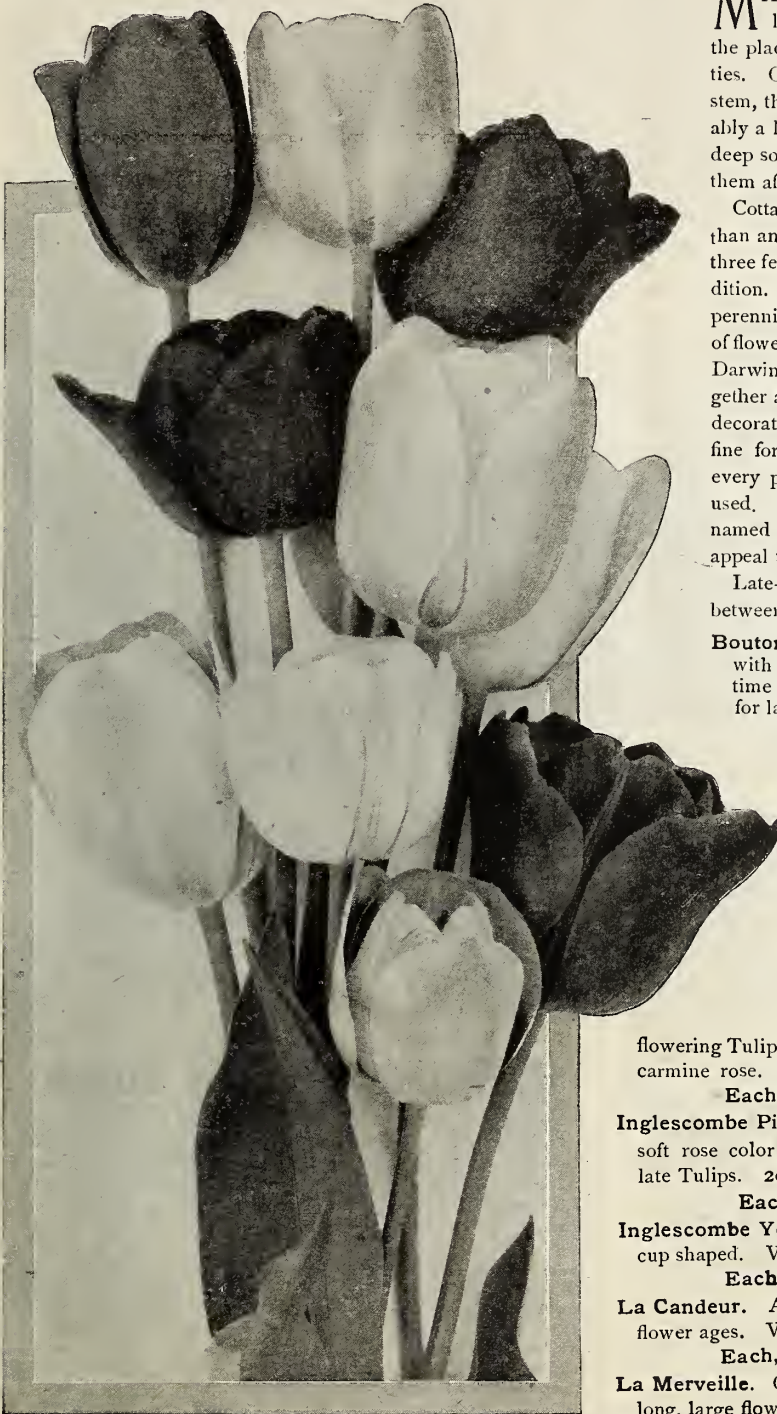
The Double Varieties of Tulips are used extensively for both bedding and potting. They are quite necessary for out of door planting as they bloom a little later than the single early kinds and and thus prolong the blooming period until the May-Flowering varieties blossom.

	EACH	DOZ.	100		EACH	DOZ.	100
Boule de Neige. (E1) D Pure white, very large full peony-like flowers; good forcer . . .	10	\$ 80	\$ 5 00	Schoonoord (Murillo White.) (E) M Similar to Light Pink Murillo except in color. The best pure white double Tulip.	11	\$ 95	\$ 5 60
Crown of Gold. (Couronne d'Or) (E1) M One of the best of the double Tulips; deep yellow, large flowers. Does well for either the garden or forcing.	11	90	5 40	Rubra Maxima. (E) M Flowers large and double. The color a deep dark scarlet, when massed attracts attention a long distance. One of the best scarlets.	10	75	4 50
Crown of Roses. (E) T Rich deep rose, large flowers, perfectly double.	11	95	5 60	Tea Rose. (E) D Soft sulphur yellow or primrose slightly orange shaded. A unique and attractive color.	8	65	3 85
Gloria Solis. (E1) M Red, striped yellow. A showy flower in every respect. Very popular	9	70	4 20	Tournesol Red. (E) D Rich scarlet, yellow edged. Very early forcer.	11	90	5 40
La Candeur. (E1) D A fine double white. One of the best bedding varieties.	9	70	4 00	Tournesol Yellow. (E1) M Yellow shaded orange. Extra large and showy.	11	90	5 40
Lord Beaconfield. (E1) M A deep cherry rose	9	70	4 20	Yellow Rose, Best late double Tulip. Pure gold-yellow	9	70	4 20
Lucretia. (E2) M A splendid bright pink, large well-formed flowers; forces well. . . .	9	70	4 00	First Quality Mixed, Early Varieties.	60	3 25	
Murillo. (E) M Extra good for forcing in the house, and equally good for bedding. The finest double light pink.	8	60	3 00	Double Tulips separate colors - Unnamed. White, pink, yellow, red, or variegated.	8	65	3 35
Slavator Rosa. (E) M Fine deep rose; large flower; excellent forcer.	11	95	5 60				



Prices above include postage to fifth zone. Six bulbs of one variety at dozen rate, fifty at hundred rate.

Vick's May-Flowering or Cottage Tulips



MAY-FLOWERING Tulips are among the most popular of all bulbs for fall planting. They do not take the place of, but come into bloom following the early varieties. On account of their increased size, both of flower and stem, they make a most handsome showing. Use preferably a light, well-drained soil, and plant at least four inches deep so that shallow-rooted annuals may be planted over them after their blooming season is past.

Cottage Tulips have a greater range of color and form than any other class. In good soil they grow from two to three feet high, the flowers lasting two weeks in good condition. Planted promiscuously among the shrubbery or perennial beds, the effect is very beautiful, as, at their time of flowering, there is a dearth of flower color. Cottage and Darwin Tulips make a splendid combination planted together and are unsurpassed for cutting for table and house decoration. Vick's May-Flowering or Cottage Tulips are fine for bedding and forcing in pots in the house, and for every purpose for which the early flowering varieties are used. Our list is very complete, comprising the best named varieties. Our May-Flowering Tulip mixture will appeal to those wishing a variety of color.

Late-flowering Tulips furnish a wealth of beauty and color between the early flowering bulbs and summer annuals.

Bouton d'Or (Golden Beauty). A graceful Tulip with cup shaped golden-yellow flowers that keep a long time in good condition. Unsurpassed as cut flowers and for late forcing. 20 inches high.

Each, 8 cts.; doz. 65 cts.; 100, \$3.70.

Caledonia. A bright orange vermillion, center greenish black, a distinct color. Very fine for outdoor cutting.

Each, 8c.; doz. 65c.; 100, \$3.70.

Elegans Carmine. A very free growing, handsome Tulip with long flowers of brilliant crimson with yellow centers. Petals are elegantly reflexed. Splendid for borders and for cut flowers. 15 inches high.

Each, 9c.; doz. 70c.; 100, \$4.20.

Elegans White (White Crown). A large flowering Tulip with reflexing petals of creamy white edged with carmine rose. Fine for borders and for late forcing. 20 inches high.

Each, 11 cents; doz. 90 cents; 100, \$5.40.

Inglescombe Pink (Salmon Queen). A very attractive Tulip of soft rose color with a salmon flush. Very prominent among the late Tulips. 20 inches high.

Each, 8 cents; doz. 65 cents; 100, \$3.85

Inglescombe Yellow. A large flower of pure glossy canary yellow; cup shaped. Very fine.

Each, 8 cents; doz. 65 cents; 100, \$3.85.

La Candeur. A silvery white Tulip that turns to a soft rose as the flower ages. Very beautiful. Height 16 inches.

Each, 10 cents; doz. 75 cents; 100, \$4.40.

La Merveille. Orange-scarlet flushed with rose; yellow center. A long, large flower of exquisite form, deliciously fragrant. 20 inches high.

Each, 8 cents; doz. 65 cents; 100, \$3.70.

Vick's May-Flowering Cottage Tulips are splendid for cutting for house and table decoration.

Vick's May-Flowering or Cottage Tulips, (continued)

Gesneriana lutea. A very fine late yellow for bedding and growing among shrubbery. Flowers are very large and beautifully formed. Color a rich pure golden yellow. Has a strong stem that will stand the roughest weather. 25 inches high.

Each, 9 cents; doz. 70 cents; 100, \$4.00

Gesneriana rosea. A rosy carmine Tulip with a black center.

Each, 9 cents; doz. 70 cents; 100, \$4.20

Gesneriana Spathulata Major. A superb Tulip with very large, intensely brilliant crimson-scarlet flowers, borne on strong yet graceful stems which keep in condition a long time. We strongly recommend this Tulip for all kinds of outdoor planting. Its beauty attracts attention everywhere. 24 inches high.

Each, 9 cents; doz. 70 cents; 100, \$4.00

Isabella (Blushing Bride—Shandon Bells). Deep goblet-shaped flowers on stems 18 inches high. Creamy white petals tinted with blush, turning as the flower ages to carmine pink. One of the best for forcing and border planting.

Each, 8 cents; doz. 65 cents; 100, \$3.70

Macropsilla. A crimson-scarlet Tulip with a black and yellow center. Attractive in borders and among shrubbery.

Each, 8 cents; doz. 65 cents; 100, \$3.85

Moonlight. A new soft yellow, extra large elongated flower.

Each, 10 cents; doz. 75 cents; 100, \$4.50

Mrs. Moon. Deep pure yellow, large flowers with reflexed pointed petals.

Each, 10 cents; doz. 75 cents; 100, \$4.60

Picotee (Maiden's Blush). A very beautiful Tulip as a cut flower and in borders and beds. The petals are recurving, pure white, acquiring in a few days a pink edging which suffuses the entire flower as it grows older. Very beautiful. 22 inches high.

Each, 8 cents; doz. 65 cents; 100, \$3.70

Primrose Beauty. Soft pale lemon yellow, or primrose changing to white; new.

Each, 9 cents; doz. 70 cents; 100, \$4.20

Royal White. Pure white, center creamy yellow, flowers of beautiful shape.

Each, 11 cents; doz. 95 cents; 100, \$5.60.

The Fawn. Rosy soft fawn, or dove color, shading to blue. A very graceful tulip of unique, charming color.

Each, 9 cents; doz. 70 cents; 100, \$4.00

Retroflexa. Yellow, recurving petals; distinct.

Each, 10 cents; doz. 75 cents; 100, \$4.60.

Striped Beauty. Silvery rose blotched and striped with dark carmine and white. The large, showy flowers are held on tall, stately stems. Splendid outdoor and late forcing Tulip. 18 inches high.

Each, 10 cents; doz. 75 cents; 100, \$4.40.

Vitellina. Large pale primrose, changing to creamy white with age. Each, 10 cts.; doz. 75 cts.; 100, \$4.50.

Vick's May-Flowering or Cottage Tulips. All colors mixed. Doz. 60 cents; 100, \$3.25



ISABELLA—Deep Goblet-shaped Flowers on Tall, Strong Stems

Parrot or Dragon Tulips

The Parrot Tulips are the most brilliant and showy members of the Tulip family, the colors ranging from yellow to deep brown, intense scarlet and fiery crimson. They get their name from the characteristic beak or horn formed by the petals giving them a unique, ragged appearance. When massed in a bed they make a dazzling show.

	EACH	DOZ.	100
Admiral de Constantinople. Red	09	\$ 70	\$ 4 20
Cafe Brun. Rich brown	09	70	4 20
Cramoisi Brilliant. Scarlet	09	70	4 20
Lutea. Yellow	09	70	4 20
Markgraaf. Red and yellow	09	70	4 20
Perfecta. Red striped	09	70	4 20
Superfine Mixed	08	60	3 40

At above prices we prepay postage, to any point east of Kansas.

6 bulbs, one variety at dozen rate, 50 at 100 rate.

varieties of Early-Flowering, Cottage and Darwin Tulips

Vick's Cottage Tulip 75cts. Collection for

THREE EACH OF FOUR VARIETIES

3 ISABELLA

3 INGLEScombe PINK

3 PICOTEE

3 GESNERIANA RED

Here is a splendid combination of varieties to show a good range of colors and several types of flower at considerable saving over what they would cost if purchased separately.

Cottage Collection, Prepaid for 75 cents.

A very long season of bloom may be had by selecting

Giant Flowering Darwin Tulips

The Monarch of All The Tulips



The Darwins are truly the acme of perfection in Tulips with their mammoth superbly formed blooms of riotous colors borne on tall, strong, graceful stems. The flowers of the Darwins are usually gracefully egg-shaped with very little or no flare at the top. They have a wonderful range of color, white, blush, pink, lilac, heliotrope, rose, crimson, maroon, purple, black and all the intermediate shades. They start blooming the middle of May and continue for a long period at a time when many early spring flowers have gone and before summer flowers begin to bloom. As this Queen of all the Tulips is becoming better known it is growing in popularity by leaps and bounds. If you want a bed of Tulips that will be the admiration of your neighborhood, do not fail to plant some Darwins this fall. The picture at the left shows how effective Darwins are planted in front of shrubbery. They are in their glory before the shrubbery is entirely leaved out. Note how each color or variety is grouped by itself. For indoor blooming they are superb although they require special care in rooting for the best results.

At prices below we prepay postage as far west as Kansas, (fifth zone.)
Six bulbs of one variety at dozen rate, fifty bulbs of one variety at hundred rate.

Albert Kellogg (Early Dawn). Color, a beautiful rose with a slight shading of lavender at base of flower. An erect, strong grower; stems about 25 inches long. One of the best for garden or house culture.

Each, 10 cents; doz. 75 cents; 100 \$4.60.

Baron de la Tonnaye. Flowers very large, of a dainty carmine-rose, shading to soft pink. A grand bedding or forcing variety. Height 26 inches.

Each, 8 cents; doz. 65 cents; 100, \$3.70

Carl Becker. Pale rosy violet with center salmon rose. Large handsome flower; good forcer. Height 32 inches.

Each, 11 cts.; doz, 95 cts.; 100, \$5.60

Clara Butt. Clear pink flushed salmon rose; large flowers of handsome shape. Exquisitely beautiful out-of-doors and fine for forcing in the house. Height 21 inches.

Each 8 cents; doz. 60 cents, 100, \$3.60

Dream. Beautiful soft, uniform lilac; large flower.

Each, 9 cents; doz. 70 cents; 100, \$4.20

Europe. (Salmon King). Glowing salmon-scarlet, medium size flower on strong stem. Fine for border and splendid variety for pot culture. Height 22 inches.

Each, 10 cents; doz. 80 cents; 100, \$4.90

Glory. Brilliant scarlet, good size flower on long stem. A splendid bedding plant.

Each, 9 cents; doz. 70 cents; 100, \$4.20

Glow (Claude Gillot). Dazzling vermilion-scarlet, base dark blue, margined white. Very showy bedder.

Each 11 cents; doz. 85 cents; 100, \$5.25

Gretchen (Margaret). Delicate flesh color, interior soft pink. On account of its dainty color it is very popular as a cut flower.

Each, 8 cents; doz. 60 cents; 100, \$3.60

Harry Veitch. Color, rich blood red with blue base. Flowers large, borne on stems 28 inches long. An exceptionally fine variety for either the garden or forcing in the house.

Each, 9 cents; doz. 70 cents; 100, \$4.20

Inglescombe Yellow. A large flower, pure glossy canary yellow, cup shaped; very fine for borders and cutting.

Each, 8 cents; doz. 65 cents; 100, \$3.85

Isis. A fiery crimson scarlet with blue base, margined white; large and beautiful. Height 27 inches.

Each, 10 cents; doz. 75 cents; 100, \$4.60

King Harold. Maroon scarlet with white base. A beautiful variety for the garden standing the weather well. Height 24 in.

Each, 10 cents; doz. 80 cents; 100, \$4.80

La Candeur (White Queen). Almost pure white when mature. At first tinged pale rose. The black anthers add to the showy effect when the flower is open. Medium size. Fine for bedding or pot. Height 24 inches.

Each, 10 cents; doz. 75 cents; 100, \$4.60

La Tulip Noir (The Black Tulip). The most famous and finest black tulip, as nearly black as any flower grown. A bloom of rich velvety texture and perfect form. Height 25 inches.

Each, 10 cents; doz. 75 cts.; 100, \$4.60.

Loveliness. Soft carmine-rose, paler at margin, of good size and fine form. A beautiful Tulip for massing or border. Height 21 in.

Each, 9 cents; doz. 70 cents; 100, \$4.20

Darwins, the monarch of all Tulips, with their tall, strong, stately stems, are the aristocrats of the Tulip family

GIANT FLOWERING DARWIN TULIPS, continued

At prices below we prepay postage or express as far west as Kansas, (fifth zone.)

Six bulbs of one variety at dozen rate, fifty of one variety at hundred rate.

Madame Krelage. Bright lilac-rose, margined with pale silvery-rose; inside a soft rose-pink. A very long blossom of remarkably handsome form. 28 inches high.

Each, 11 cents; doz. 85 cts.; 100, \$5.00

Massachusetts. The height of this fine variety is about 26 inches. The large flowers are a vivid pink, with white center. It is considered one of the very best for the border or massing.

Each, 10 cents; doz. 75 cents; 100, \$4.60

Mauve Clair. A soft lilac mauve, dark center; very beautiful tall and stately.

Each, 10 cents; doz. 75 cents; 100, \$4.50

Mr. Farncombes Sanders. A large, broad-petaled, perfectly shaped Tulip. Outside surface of petals are scarlet with a rosy bloom. Inside face a vivid cerise scarlet with white center, marked with blue. One of the best. 25 inches high.

Each, 11 cents; doz. 85 cts.; 100, \$5.00

Mrs. Potter Palmer (Fashion). A deep purple Tulip of fine form. A great favorite for border planting. 28 inches high.

Each, 10 cents; doz. 75 cents; 100, \$4.50

Nauticus. A very handsome Tulip for outdoors or forcing in the house. The flowers are borne on strong stems 30 inches high, and are of a pleasing purplish rose, the center a dark violet. Each, 9 cts.; doz. 70 cts.; 100, \$4.00

Painted Lady. A creamy white flower faintly tinged with soft heliotrope. Large and very beautiful; somewhat resembles a Water Lily. 24 inches high.

Each, 8 cents; doz. 65 cents; 100, \$3.70

Phillipe de Comminet. Large, dark velvety purple flowers almost black on stiff, upright stems. An early forcer and fine for the border. 24 inches high.

Each, 9 cents; doz. 70 cts.; 100, \$4.00

Pride of Haarlem. A wonderful Tulip, both for its glorious color and stately habit. A brilliant rosy-carmine flower, sweet scented, very large and of superb form. Unsurpassed for borders and a sure and early forcer. 25 inches high.

Each, 8 cents; doz. 60 cents; 100, \$3.60

Psyche. A beautiful rich soft rose, inside shading to silvery rose with base tinted blue. Large flower, long stem. Height 28 inches.

Each, 9 cents; doz. 70 cents; 100, \$4.00

Reverend Ewbank. A vivid heliotrope-lilac with lighter tint at the margin. A magnificent flower in the border and fine for forcing. 22 inches high.

Each, 8 cents; doz. 65 cents; 100, \$3.70

Sophrosina. A new light pink shaded rose. A flower of very delicate beauty.

Each, 11 cents; doz. 85 cts.; 100, \$5.00.

The Sultan. Rich maroon-black with a blue base. A medium size flower of perfect form and velvety texture. 25 inches high.

Each, 8 cents; doz. 65 cents; 100, \$3.70

Whistler. Vivid crimson scarlet with blue base, extra large flower. The finest red Darwin yet produced.

Each, 12 cents; doz. \$1.10; 100, \$6.60

William Copeland (Sweet Lavender). Very beautiful, the best early forcing Darwin Tulip. Its color, when forced, is a delicate rare lavender. Not so good for outdoor growing.

Each, 9 cents; doz. 70 cts.; 100, \$4.20

Vick's Darwin Tulips. All colors mixed.

Doz. 60 cents; 100, \$3.25

DARWIN TULIP COLLECTION

Here are three bulbs each of four of the finest Darwins offered at a special price.

3 Clara Butt, pink. 3 Mrs. Potter Palmer, violet.
3 Europe, salmon scarlet 3 Pride of Haarlem, rosy-carmine

12 Bulbs in all for - 85 cents.

REMBRANDTS, BIZARRES, BYBLOOMS

Late flowering tulips of many colors, streaked and feathered in gaudy striking fashion. Old time favorites.

Rembrandts, mixed. Magnificent flowers of rich colors, variously flamed, and streaked with crimson, rose, pink, white, etc.

Each, 9 cents; doz., 70 cents; 100, \$4.20.

Bizarres, mixed. Yellow ground colors, variegated with purple, crimson, bronze, etc.

Each, 8 cents; doz., 65 cents; 100, \$3.70.

Byblooms, Roses. Blotched and feathered with rose tints on white ground.

Each, 8 cents; doz., 65 cents; 100, \$3.70.

Byblooms, Violets. Violet, purple and bronze streaks with white ground.

Each, 8 cents; doz., 65 cents; 100, \$3.70.



A POT OF WILLIAM COPELAND (Sweet Lavender.)

The best of the Darwins for potting or "forcing" indoors.

With a little care Darwins can be grown successfully indoors and make superb home decorations during March.

Toledo, Ohio
I wish to thank you for the fine collection of Tulips, Hyacinths and Daffodil bulbs you sent me last fall. They have been blooming for the last three weeks and are certainly very beautiful. Allow me to thank you for your prompt attention to my order.

Respectfully yours,
Mrs. Chas. Sommerfield.

THE BREEDER TULIPS



The Breeders are the true "Blue-Bloods" of the Tulips. They trace their ancestry directly back to the 16th century to the Tulips that caused the famous Tulip craze in Holland when people traded and sold all their possessions for rare varieties of these bulbs. They are a late, tall-growing race closely related to the Darwins and resemble these noble Tulips in size, shape and length of stem. Breeders are distinguished for their rich rare blends of color, many of which are found in no other flower in existence. Nature's happiest and rarest color combinations of rich purple and bronze, gray and lilac, gold and mahogany, brown and orange, are revealed in this group. For house blooms they blend admirably with high class house furnishings, tapestries and rugs as if they were made especially for such settings. Of the wonderful array of varieties we believe we have selected below as fine a list as can be offered at reasonable prices. Everyone who saw the collection of Breeders we grew for trial purposes when they were in bloom was so enthusiastic over their marvelously rich, refined and pleasing colors and perfect form that we take unusual pleasure in recommending them to all our friends.

At prices below we prepay postage as far west as Kansas
(fifth parcel post zone)

Six bulbs of one variety at dozen rate, fifty at 100 rate.

Apricot. A beautiful bronze shaded ruddy apricot with orange base flushed orange and red; height 25 inch.

Each, 12 cts.; doz., \$1.10; 100, \$6.60.

Aspasia. Clear red shaded with purple; large blue base; center white, shaded blue; extra large flowers; very fine.

Each, 12 cts.; doz., \$1.00; 100, \$6.30.

Black Chief Dark purple almost black; very rich velvety appearance. Each, 10 cts.; doz., 75 cts.; 100, \$4.60.

Bronze Queen. Soft bronze or buff tinged apricot; inside golden bronze; very good for pot culture and also fine for out-of-doors; has large flowers of sturdy habit; height 26 inch.

Each, 9 cts.; doz., 70 cts.; 100, \$4.20.

Cardinal Manning. A unique blend of mauve and rose, making a general effect of dull wine red, changing to almost pure orange at extreme edge of petals.

Each, 10 cts.; doz., 75 cts.; 100, \$4.40.

Don Pedro. A unique shade of coffee brown shaded at edge with bronze; inside rich mahogany; large flower.

Each, 13 cts.; doz., \$1.25; 100, \$7.40.

General Ney. Dull old gold with deep apricot base shaded to orange; height 25 inches.

Each, 11 cts.; doz., 95 cts.; 100, \$5.60.

Jaune d'Oeuf. (Sunrise). Golden, outside petals shaded apricot to orange red; inside orange; very good for forcing.

Each, 10 cts.; doz., 75 cts.; 100, \$4.40.

Lord Curzon. (La Singuliere) A wonderfully handsome silvery white heavily flushed at margin with dark maroon crimson. With age color tinges the whole flower; very large; height 25 in.

Each, 11 cents; dozen, 95 cents; 100, \$5.60.

Le Mogol. A pale silvery lilac passing through white with silver veins; inside a dark lilac; white base; medium size flower; height 18 inches.

Each, 11 cents; dozen 95 cents; 100, \$5.60.

Marie Louise. Old rose, flushed yellow; good sized flower of great beauty; height 23 inches.

Each, 12 cents; dozen, \$1.00; 100, \$6.20.

Mon Tresor. Bright carmine red; large flower of striking color.

Each, 10 cents; dozen, 75 cents; 100, \$4.40.

Panorama. (Fairy) Reddish brown or mahogany shaded and edged with deep bronze; beautifully shaped flower; one of the very best for early forcing.

Each, 12 cents; dozen, \$1.15; 100, \$7.00.

Prince of Orange. Terracotta with orange scarlet edge, shading to light yellow; a large flower of striking beauty.

Each, 10 cents; dozen 80 cents; 100, \$4.90.

Queen Alexandra. A soft sulphur yellow or primrose shaded with deep orange or brown, black anthers; a new tulip of wonderful beauty.

Each, 11 cents; dozen, 95 cents; 100, \$5.90.

Turenne. Purplish brown with broad margin of soft yellow; very large flower. Height 30 inches.

Each, 13 cents; dozen, \$1.25; 100, \$7.40.

Yellow Perfection. Light bronze-yellow, edged golden yellow; large flower of wonderful beauty. Height 25 inch.

Each, 10 cents; dozen, 75 cents; 100, \$4.60

Breeder Tulips all varieties mixed; dozen, 65 cents;

100, \$3.60.

BREEDER TULIP COLLECTION

A special opportunity to try out a few of the wonderful tulips described above at exceptionally low prices, including some of the most artistically colored flowers in existence.

One Each — Six Magnificent Varieties, 50 cents

ASPASIA	LORD CURZON
JAUNE D'OEUF	PRINCE OF ORANGE
BRONZE QUEEN	QUEEN ALEXANDRA

One each, six bulbs, for 50 cents, postpaid.

Words and pictures are far too inadequate to portray the exquisite beauty of the Breeder Tulips.

NARCISSUS -- DAFFODILS

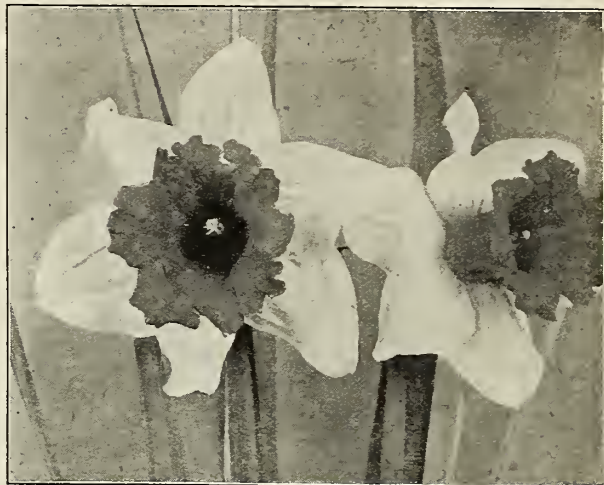
The different varieties of Narcissus are so well known and so much admired that it is hardly necessary for us to call attention to their many merits here. With the exception of the Polyanthus varieties, all are hardy and can be grown out of doors and should be planted in the Autumn at the same time and in the same manner as Tulips and Hyacinths. They bloom very early, making a wonderful show in the garden even before the leaves are fully out on the trees. When thru blooming the bulbs may be lifted to make room for other plants or may be left in the ground permanently and will come up each spring for years to gladden the heart of the gardener. Nearly all kinds, especially the Polyanthus varieties, can be grown indoors in pots or among pebbles in bowls of water.

At prices below we prepay postage, to 5th zone.
Six bulbs of one variety at dozen rate, 50 bulbs at 100 rate.

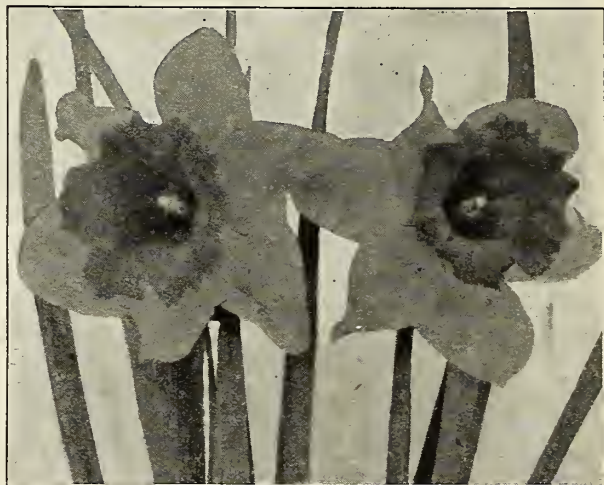
GIANT TRUMPET (Ajax)

This class of single large flowered Narcissus is distinguished for long petals or perianth and very large trumpets. They are either white, yellow or bicolor, the latter term being applied to those kinds having petals or perianth of one color and trumpets of another.

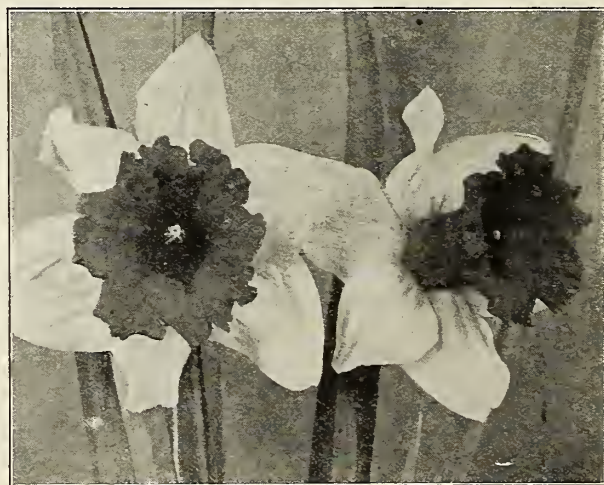
	EACH	DOZ	100
Empress (Bicolor). A splendid flower of rare beauty. One of the best of the two-colored trumpets. Perianth white and of good substance; trumpet rich yellow. An excellent forcer. First size, round bulbs	\$0 12	\$1 00	\$6 30
Mammoth, double nose bulbs	14	1 30	8 25
Emperor. Deep yellow, large trumpet. First size, round bulbs	12	1 00	6 30
Mammoth double nose bulbs	14	1 35	8 95
Glorv of Leiden. Full, deep yellow; one of the largest of the Giant Trumpet varieties. Double nose bulbs	13	1 25	8 15
Golden Spur. Rich golden yellow, both trumpet and perianth; early, large, and free blooming. First size, round bulbs	12	1 00	6 30
Second size, double nose bulbs	13	1 15	7 50
Mammoth double nose bulbs	14	1 40	9 10
Henry Irving. Rich yellow, frilled trumpet; a magnificent flower	12	1 10	7 00
Madam de Graaff. One of the largest and finest of all White Trumpet Narcissus, perianth pure white, trumpet soft primrose passing off white. Double nose bulbs	12	1 10	7 00
Princeps maximus. Primrose perianth, yellow trumpet; one of the best and earliest for forcing. First size, round bulbs	9	70	4 20
Mammoth double nose bulbs	12	1 00	6 30
Trumpet Major. True golden yellow petals and trumpet, fine for forcing and cutting; standard single yellow Daffodil	12	1 00	6 30
Victoria (Bicolor). Perianth creamy white; trumpet rich yellow. Richly perfumed. First size, round bulbs	12	1 10	6 60
Mammoth double nose bulbs	14	1 35	8 95
Large Trumpet Varieties Mixed	9	70	4 20



EMPRESS NARCISSUS



EMPEROR NARCISSUS



VICTORIA NARCISSUS

MEDIUM TRUMPET or CUP

In this class we have grouped the varieties which have medium-sized crowns or trumpets and most of them have quite large, broad petals or perianth, the trumpet being reduced in size in many cases to almost a cup. This is a very beautiful, distinctive class.

	EACH	DOZ.	100
Incomparabilis Gloria Mundi. A very beautiful flower with clear yellow perianth and broad, well-expanded orange-scarlet crown.	\$0 12	\$1 10	\$6 60
Incomparabilis Sir Watkin. Sulphur yellow; cup bright yellow tinged orange; bold, handsome flower. First size, round bulbs.	12	1 10	6 60
Mammoth size, double nose bulbs	14	1 30	8 60
Barri Conspicuous. Broad perianth, soft yellow color; short cup, edged orange scarlet.	11	95	5 50
Leedsii Dutchess of Westminster. Large pure white perianth; long, soft canary yellow cup; trumpet orange with white shading; very fine	12	1 00	6 30
Leedsii Mrs. Langtry. Broad, white perianth; cup white, primrose edge. A remarkably free flowering variety	10	80	4 80

Narcissus or Daffodils are so easily grown that we think sometimes that their friendly beauty is not half appreciated

SMALL CUP NARCISSUS

This group contains varieties with very small cups sometimes called eyes. They are very dainty and popular. They include two main sorts, the popular Poeticus or Poet's Narcissus and the Poetaz. The Poetaz is a new group obtained by crossing the Poeticus with the Polyanthus varieties producing a flower similar to that of the Poeticus but bearing several flowers on a stem like the Polyanthus. They are perfectly hardy and can be grown successfully out of doors as well as in pots in the house.

Poeticus Pheasants Eye. Pure white perianth; scarlet or orange-red eye or cup . . .	EACH	DOZ.	100
	\$0 10	\$0 75	\$4 60
Poeticus Ornatus. Pure white perianth, broad cup tinged scarlet. Very early. Sweet scented, round bulbs	8	65	3 75
Double nose bulbs	10	75	4 60
Poeticus Burbridgei. Large white flowers, cup margined red. Blooms a month earlier than the older sorts	10	75	4 60
Poetaz Aspasia. White perianth, yellow eye; four to five large flowers on a stem	12	1 10	7 00
Poetaz Elvira. Pure white, yellow cup edged orange; three to four flowers on a stem; very free flowering; delicately fragrant . .	12	1 10	7 00
Poetaz Irene. Perianth sulphur yellow; cup orange; eight to nine flowers on a stem . .	12	1 15	7 50

DOUBLE NARCISSUS

Alba plena odorata. White, sweet-scented; recommended highly for outdoors for cutting; cannot be forced	EACH	DOZ.	100
	\$0 10	\$0 75	\$4 60
Incomparable (Butter and Eggs). Yellow and orange; sweet-scented	11	95	5 60
Orange Phoenix (Eggs and Bacon.) White, with orange center, large flower. Easily grown indoors	12	1 10	6 60
Silver Phoenix or Sulphur Crown.	12	1 10	6 60
Double Von Sion. The true "Double Yellow Daffodil," First size, round bulbs . . .	11	85	5 00
Second size double nose bulbs	12	1 10	6 60
Double nose, extra large bulbs, producing two or three flowers.	13	1 15	7 35
Double Varieties Mixed	10	75	4 50

POLYANTHUS NARCISSUS

These are the bulbs which are grown most commonly with pebbles in water. They are very free flowering, deliciously sweet scented and are very easily grown. In fact, one is more nearly certain of success with these bulbs than with any other kind of plants we know anything about. They are not hardy in the North and when planted out doors they must be carefully protected in cold weather with a covering of leaves or other litter.

Gloriosum superbum. White, with deep orange cup; fine.	EACH	DOZ.	100
	\$0 13	\$1 15	\$7 50
Grand Monarque. White, yellow cup, the finest of all white Polyanthus; excellent for growing in water	13	1 15	7 50
Grand Soleil d'Or. Bright yellow, deep orange cup.	13	1 15	7 50
Her Majesty. Fine white	13	1 15	7 50
Newton. Yellow, orange cup; very fine . .	13	1 15	7 50
Mont Cenis. White, yellow cup; beautifully formed flowers. One of the finest	13	1 15	7 50
Queen Victoria. White, yellow cup; extra early	13	1 15	7 50
White Pearl. Entirely white; early; recommended for forcing	13	1 15	7 50
Mixture of above varieties	12	1 10	6 60

NARCISSUS COLLECTIONS

These include some of the finest and most popular varieties from each class at a great saving in cost. Full description above.

- | | |
|----------------------|-------------------------------------|
| Empress | Henry Irving |
| Trumpet Major | Poeticus Ornatus |
| Emperor | Double Von Sion, Double nose |
- Collection "C"** 2 bulbs of each, 12 in all **\$1.00.**
- Collection "D"** 6 bulbs of each, 36 in all **\$2.25.**

It is very interesting to watch the rapid development of the

Paper White Narcissus Large-Flowering

A variety of Polyanthus Narcissus usually grown in water

They bloom very quickly after being set among the pebbles, and make handsome ornamental plants. Set the bulbs in a dish, with gravel or small stones to hold them in place, and fill with water, leaving the top of the bulb about half an inch above the water. White Paper White Narcissus are most easily grown in water as described above, they may also be grown very successfully in boxes or pots like other bulbs. Millions of these bulbs are grown by florists for the cut flower trade. As they respond readily to ordinary house culture they are about the most popular bulbs sold at the present time.

Each, 10 cts.; doz., 75 cts.; per hundred, \$4.25; prepaid.



PAPER WHITE NARCISSUS - 8 blooms from 4 bulbs.

JONQUILS

This is a small-flowering type of Narcissus prized for its graceful golden, fragrant blossoms and the ease with which it may be grown.

Largest Double. Sweet-scented	EACH	DOZ.	100
	\$0 10	\$0 75	\$4 60
Single. Golden yellow Sweet-scented	10	75	4 60
Campernel (Great Jonquil). Yellow, fragrant	11	85	5 00
Rugulosus. Large golden yellow, much finer than Campernel	11	85	5 00
Tenior (True Silver Jonquil). Flower pale silver-sulphur colored, 1 to 2 inches broad; 1 to 2 flowers on stem; fine	11	85	5 00

Polyanthus Narcissus growing in a dish of pebbles and water



AN OUTDOOR BED OF CROCUS

FORTY BULBS FOR \$1.25.

For some time past this has been the most popular combination bulb offer in our catalogue. The reason for this is not hard to find. The price is reasonable. Then the collection is equally suitable for out-of-doors planting or in the house. All of the stock is of the same high quality found in our regular stock. Every bulb is carefully selected. For a pleasing and adaptable assortment of bulbs, this collection is hard to beat at this price. Order by this name—

Vick's Choice Bulb Collection

SIX HYACINTHS - Two each, Rose, White and Blue.

THREE NARCISSUS - Large Flowering.

TEN TULIPS - Extra Choice Assorted Colors.

TWENTY-ONE CROCUS - Assorted colors. Selected.

FORTY ASSORTED BULBS—CAREFULLY SELECTED FOR -- \$1.25

A splendid opportunity for all to have a fragrant inside window garden or a beautiful flower bed if planted outside. Order early to get the full benefit as soon as possible.

CALLA—Richardia Africana

The well known Egyptian Lily, or Lily of the Nile, with large white flowers and broad foliage. Excellent for aquarium purposes. In the spring they may be planted in the garden and left until September, when they may be taken up, potted, and removed to the house or conservatory, to bloom during the winter and spring. Callas will be more popular than ever this season owing to the scarcity and high price of Easter Lillies.

First Size, large flowering bulbs, each, 35 cents; doz. \$3.50
Postage or Express prepaid.

The bright colored Crocus, peeping from the ground, early in spring, soon after the snow goes, are greatly appreciated

VICK'S CROCUS

THE brave and hardy Crocus pushing its way through the soil just as soon as the frost is out of the ground is one of the first flowers to appear in the spring. Crocus make their appearance even while frosty nights still occur and frequently brave the delayed snow storms which appear in the early spring. It is easy to understand why they are so popular. For out-of-door growing they are used probably most commonly "naturalized". For this purpose they should be scattered in irregular groups about the lawn and produce a most charming effect early in the spring. The grass should not be mowed until two weeks after they have ceased flowering. Ordinarily it would not need cutting before that time anyway. The bulbs can be left in the ground year after year and will continue to herald the coming of spring every year with their bright colors. All that is needed in planting the bulbs is a good strong trowel to make an opening in the sod in which to drop the bulb. The sod can then be pressed into place. Crocus are also very beautiful in beds in the garden. After flowering, they can be taken from the ground and kept in a dry place until planting time in the autumn or they may be allowed to remain undisturbed in the ground like those in the lawn.

For indoor growing Crocus are very popular. A few pots of these bright-colored flowers make a splendid show for house decorations.

At prices below we prepay postage to the fifth parcel post zone. Fifty bulbs of one variety at hundred rate. Special prices on larger quantities upon request.

NAMED CROCUS EXTRA LARGE BULBS

	doz.	100
Albion. Striped	3 for 12	30 \$1 75
Baron von Brunow. Dark blue	3 for 12	30 1 75
Grand Concurrent. White	3 for 12	30 1 75
King of the Blues. Purple	3 for 12	30 1 75
King William. Dark Blue	3 for 12	30 1 75
Lord Palmerston. Blue	3 for 12	30 1 75
Margot. Light blue	3 for 12	30 1 75
Mammoth. White	3 for 12	30 1 75
Mammoth. Yellow	3 for 20	50 3 00
Mont Blanc. Pure white	3 for 12	30 1 75
Non Plus Ultra. Variegated	3 for 12	30 1 75
President Grant. Striped	3 for 12	30 1 75
Purpurea Grandiflora	3 for 12	30 1 75
Queen Victoria. White	3 for 12	30 1 75
Sir Walter Scott. Variegated	3 for 12	30 1 75

CROCUS IN COLORS

	doz.	100
Blue and Purple	3 for 10	25 \$1 50
White	3 for 10	25 1 50
Striped and Variegated	3 for 10	25 1 50
All colors mixed	3 for 10	25 1 40
Large Yellow. First Size	3 for 15	40 2 50
Yellow. Second size	3 for 13	35 2 00
Mammoth Yellow	3 for 20	50 3 00

FREESIAS, Giant Flowered

Freeseias are very popular for pot culture as they force readily and can be had in bloom by Christmas if desired. The flowers are pure white and produced in racemes of five to eight each standing erect. Six or eight bulbs should be planted in a four inch pot. Flowers are very fragrant.

Purity, First size bulbs, dozen, 50 cts.; 100, \$3.00.

Mammoth bulbs, dozen, 60 cts.; 100, \$3.50.

VICK'S HARDY LILIES

WE are growing more varieties and larger quantities of Lilies each year on our own bulb farms, near Rochester, where because of favorable soil conditions and our experience in Lily growing, we are able to secure unusually fine bulbs. Some of our Lilies come from Japan and other far-away places, but whether grown on our own farms or coming to us from other experts in Lily growing, our bulbs are true Vick Quality.

Lilies should be used more and more extensively in the hardy border. By planting different varieties a succession of bloom may be had from the first of June until the latter part of Sept. These flowers are not only very valuable as beautiful flowering plants in the garden, but are very handsome as cut flowers for the house.

Auratum, the Gold-Band Lily of Japan. A favorite variety for outside purposes. No garden, however small, should be without it. Its ease of culture and magnificent flowers of a delicate ivory color thickly dotted with chocolate-crimson spots with a gold band running through the center of each petal, make it one of the most desirable varieties of garden lilies. Blooms about July 20th. Although quite hardy, for best results an extra covering should be given the bulbs in the winter. **Extra strong bulbs, imported direct from Japan.** EACH DOZ. 50 \$5 00

Canadense. Our native Lily; flowers drooping, delicate scarlet-yellow throat, spotted black. Blooms about July 10th. Two to three feet high 35 3 50

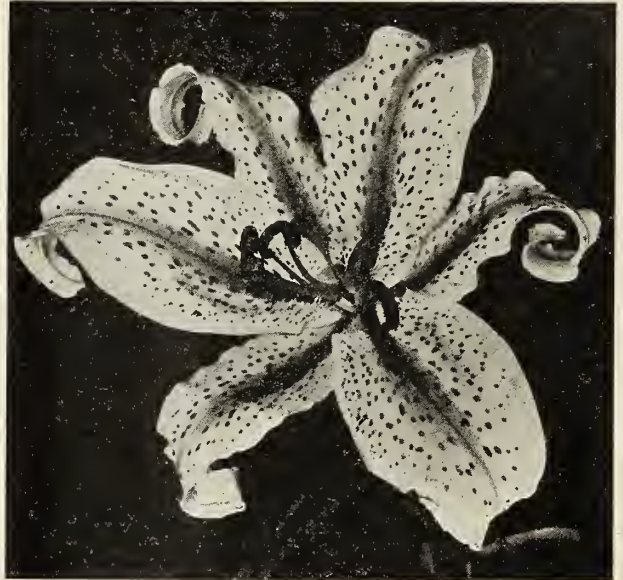
Candidum. Common white lily; hardy, free bloomer, fragrant; known as Annunciation Lily or Madonna Lily. Our bulbs are ready in August, and should be planted as early as possible in the fall. Can be grown inside. Blooms in June. **Large Bulbs** 30 3 00

Elegans, Best Red. Light red. 30 3 00

Elegans sanguineum. Blood-red 30 3 00

Elegans Incomparable. Deep crimson, slightly spotted with black. 30 3 00

The above three varieties of Elegans bloom about July 1st.



LILIUM AURATUM OR GOLD BAND LILY OF JAPAN

Elegans Batemanni. A beautiful Japanese variety; flowers upright, of clear apricot-yellow; strong and hardy; should have a place in every garden. Blooms about July 15th. 30 \$3 00

Harrisii. (Easter Lily.) The flowers are pure white, trumpet-shaped, and are unexcelled in beauty by those of any other species, while the fragrance is simply exquisite. Especially used for indoor growing. By starting the bulbs at intervals of a few weeks, a succession of bloom may be had for a long time. 50 5 00

Japonicum Longiflorum. The hardy Easter Lily. Very fragrant. White, trumpet shaped. Blooms about July 20th. 50 5 00

Longiflorum Multiflorum. Pure white trumpet-shaped flowers. Splendid for growing in pots for Easter flowering, and very desirable for outdoor planting, being quite hardy; two to three feet high; blooms in June outdoors. Easily grown indoors. 50 5 00

Speciosum Album. The Speciosum or Lancifolium are the most important of all the Japanese Lilies. Always satisfactory. The Album has large white flowers of great substance, with a greenish band running through the center of each petal. 50 5 00

Speciosum Rubrum. White and rose; rich crimson spots. Extra fine. 50 5 00

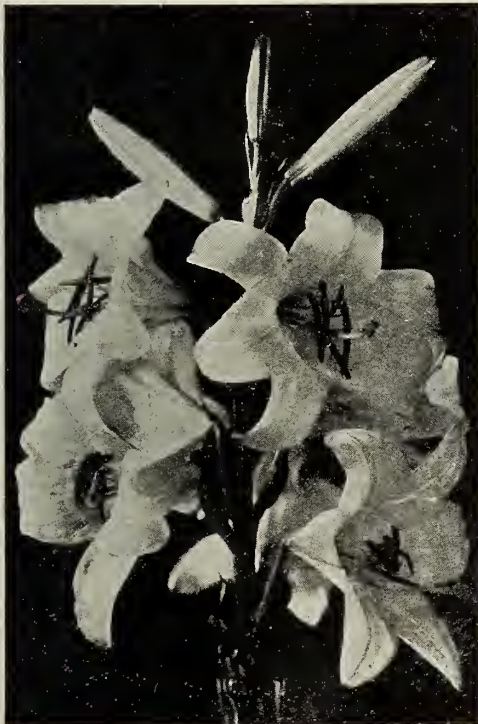
Speciosum Melpomene. Crimson, spotted with deep blood-red; each petal distinctly bordered with white. Same habit of growth as Rubrum; stem dark and color of flower much deeper. 50 5 00

The above three bloom about August 15th.

Henri (The Yellow Speciosum) Rich apricot yellow, spotted with brown. Same type of flower and habit of growth as other Speciosum lilies. Very hardy and vigorous grower 60 6 00

Tigrinum splendens. Improved Tiger Lily. Perfectly hardy, and most desirable for planting in the border with other hardy plants. Blooms about August 1st 35 3 50

Tigrinum fl. pl. Double Tiger Lily. Blooms about August 15th 35 3 50



CANDIDUM OR MADONNA LILY

No garden is complete without a few lilies. In the hardy border, in perennial beds, in almost any setting they are superb

Gilman City, Mo., May 31, 1923

Those Lily bulbs came through in fine condition. Many thanks!
J. L. Lierly.

Melford, Sask. Canada, Jan., 9, 1923

The Lilies, Roses and Geraniums I received from you early in November were very satisfactory and all are growing splendidly.
F. Marion

Lewiston, N. Y., Nov. 6, 1922

I received the Madonna Lilies this morning. They are surely nice strong looking bulbs.
Mrs. L. L. Toole



VARIEGATED LEAVED DAY LILY

SPECIOSUM LILY COLLECTION

Three of the famous and beautiful Speciosum or Show Lillies offered at a combination price. Description on p. 15

3 each, Alhum, Rubrum, Melpomene, 9 bulbs	\$3.50 postpaid.
2 " " " " " " " " " " " "	\$2.25 " "

VICK'S DAY LILIES

The Day Lilies are superb autumn flowers, desirable for planting on the side of a lawn or at the edge of shrubbery. They do well in shade and are much prized on that account. The plants can be set in autumn, and may be protected by a light covering of leaves the first winter after setting out.

Price, each 30 cents; dozen, \$3.00.

White Day Lily—Funkia Alba. Broad light green leaves. Flowers large pure white, fragrant.

Blue Day Lily—Funkia Japonica. Light blue; narrow foliage.

Variegated Leaved Day Lily—Funkia undulata media picta. Larger flowers. Foliage light green, beautifully variegated with white.

Hemerocallis aurantiaca major, Golden Day Lily. One of the very finest hardy herbaceous plants. The plant is extremely vigorous in its habit; The large and attractive foliage rises to a height of two feet, and is of a deep green. The flower spikes are strong, bearing in succession as many as twelve flowers which are seven to eight inches across; of a rich orange-yellow. A very remarkable variety.

Hemerocallis flava, Lemon Day Lily. A fine, hardy plant, producing an abundance of large, fragrant, golden-yellow flowers.

DAY LILY COLLECTION

One each of the 5 varieties described above for \$1.25, postpaid.

SUPERB LILY COLLECTION

Our most popular combination offer of lilies covering a wide range of classes selected for garden planting.

One each, Longiflorum, Rubrum, Melpomene, Alhum,	
Elegans Incomparabile, Tigrinum Splendens,	
6 extra choice bulbs,	\$2.00 postpaid.

Vick's Plants For House Culture

The moment one enters a room containing a beautiful fern or flowering plant, he is conscious of the good cheer and brightness radiated by it. The presence of these delightful companions from the Floral Kingdom is one of the things that distinguish a real home from a mere place to stay. They carry with them a hint of Summer's brightness through Winter's gloom.

We guarantee the safe arrival of our plants. If they reach you in damaged condition notify us at once and if possible send us a report from your postmaster or express agent and we will replace them.

ASPARAGUS

Each, 30 cents; two for 50 cents.

Sprengeri. One of the most rapid-growing plants of which we know, making great masses of fine feathery foliage in a very short time. Valuable for use in cut-flower work. Fine for hanging baskets or large pots. As a house plant it has no superior, as it withstands the indoor temperature well. Sometimes erroneously called Maiden Hair Fern.

Plumosus nanus, or Lace Fern. Beautiful on account of its light, feathery growth, which very much resembles lace. The graceful, dark green foliage surpasses the Sprengeri in delicacy of texture. Splendid as a pot plant and for decorative purposes.

ABUTILON—Flowering Maple

Hard-wooded greenhouse shrubs, blooming almost the entire year; well adapted for house culture. Flowers bell-shaped and drooping.

Each, 25 cents; dozen, \$2.50.

Eclipse. A trailing variety, leaves beautifully marked deep green and yellow. The flowers are bright yellow, with crimson throat.

Golden Fleece. Yellow flowers. **Snow-Storm.** White flowers.

ACHANIA MALVAVISCUS

One of the most satisfactory house plants grown, blooming summer and winter, and not subject to insects of any kind. Flowers scarlet.

Each, 25 cents; dozen, \$2.50.

We prepay transportation charges on plants up to the fifth zone at these prices and guarantee their safe arrival



ASPARAGUS PLUMOSUS NANUS

Greensburg, Pa., Sept. 14, 1922.
Received the Oleander, Silk Oak, Umbrella Palm and Roosevelt Fern in good condition. They are doing fine and I am well pleased with them.

Mrs. J. W. Steiner.

AUCUBA JAPONICA, Gold Dust Plant

A strikingly handsome house plant with shiny toothed green leaves irregularly spotted with curious golden yellow markings whence its very fitting name "Gold Dust Plant". A plant that commands instant admiration. Thrives well even in the dry unfavorable conditions of heated rooms.

Each, 30 cents; dozen, \$3.00.

AMARYLLIS

The Amaryllis produces showy flowers that are handsome and very attractive, resembling lilies. The bulbs should be potted in a rich, sandy loam, with good drainage. They require abundant moisture when growing, but at their season of rest water should be given sparingly.

Fragrans. Flowers three to four inches long; yellow, fragrant; stalks 15 to 18 inches high. Each, 30 cents; dozen, \$3.00.

Equestre. One of the best of the Amaryllis family for winter blooming. Flowers large, bell-shaped; color light scarlet, white throat. Each, 30 cents; dozen, \$3.00.

Formosissima (Jacohean Lily). Eight to ten inches high. Flowers dark crimson. The bulbs are dormant during the winter. Each, 30 cents.

FLOWERING BEGONIAS, Wax Begonia

Melior. We consider this the most satisfactory of the flowering Begonias. It blooms throughout the entire year. Flowers a beautiful shade of red.

Each, 30 cents; dozen, \$3.00.

REX BEGONIAS

The Rex varieties of Begonia are very effective as pot plants. The rich, pleasing combination of color in their foliage harmonize well with high class house furnishings. Care should be taken to keep the foliage free from dust. Occasionally the plants may be showered, but should not be exposed to the sun until the leaves are perfectly dry.

Any variety below each, 30 cents; dozen, \$3.00

Countess Louise Erdody. The wonderful Cork-screw Begonia.

Bertha McGregor. Cut leaf, center of leaf red, outside silver and red. Very fine.

Lesuodsii. One of the finest of the Rex family; the leaves are a velvet green center edged with a silver band, outer edge bright green.

Modesty. Leaves silvery white, edged with green.

President Carnot. Silvery white.

Rubrum. The entire leaf has a pinkish metallic luster, which makes it one of the most attractive varieties. The plant is a vigorous grower.

Surprise. Leaf deep bronze and silvery rose.

Van der Hyde. Mottled green and white.



REX BEGONIA, LESUODSII

The handsome and easily grown Gold Dust Plant shown above makes an ideal house plant that will live for years



AUCUBA JAPONICA - GOLD DUST PLANT

CARNATIONS

The delicately rich and grateful odor, in connection with the beautiful colors and perfect outline of the Carnation, secures for it a prominent place in all collections of flowers, either for the house or garden. The plants we offer are strong and vigorous and will bloom all winter in a cool sunny window.

Strong field grown plants in bud, ready to bloom,
each, 35 cents; dozen, \$3.75.

Beacon. Beautiful shade of scarlet. Flowers very large. Stems long.

Enchantress. Delicate shade of shell-pink, deepening towards the center, very large flower.

Enchantress Supreme. Color clear shell-pink. Flower large. Probably the most popular pink.

Doris. A fine new bright crimson; large flower, scarlet shading.

Lady Bountiful. Pure glistening white.

Mrs. C. W. Ward. Immense size, from three to four inches in diameter, with long, strong stems. Bright cerise-pink, lighting up beautifully under artificial light.

Red Jacket. A strong, robust grower; color brilliant scarlet.

Rose Pink Enchantress. Color rose pink; large flower.

Benora. White, beautifully striped with cerise-pink.

White Enchantress. Large pure white. Very free flowering.

Matchless. One of the largest white Carnations; a strong grower.

LITTLE GEM CALLA

A dwarf variety of the old Calla, eight inches high. A free bloomer.

Each, 25 cents; Dozen, \$2.50.

JERUSALEM CHERRY

Solanum Capsicastrum. (Improved) This improved type, often called Cleveland Cherry, is far superior to the old Jerusalem Cherry as it is of more compact growth and bears nearly twice as many very ornamental bright scarlet berries. The leaves are small oval shaped and very attractive. A very useful pot plant for winter decoration. Strong field grown plants, ready for 4 or 5 inch pots.

Each, 30 cents; dozen, \$3.00

CYCLAMEN—Persicum Giganteum

The Cyclamen is particularly adapted for window culture, as it blooms abundantly throughout the winter and spring months. The flowers are borne on long stems above the foliage and are very showy.

Pink, Red or White, Strong Plants, each, 50 cents

OLEANDER

Each, 30 cents; dozen, \$3.00.

Splendens variegata. Large, double pink flowers, produced early in the season; glossy green leaves with a broad margin of creamy white.

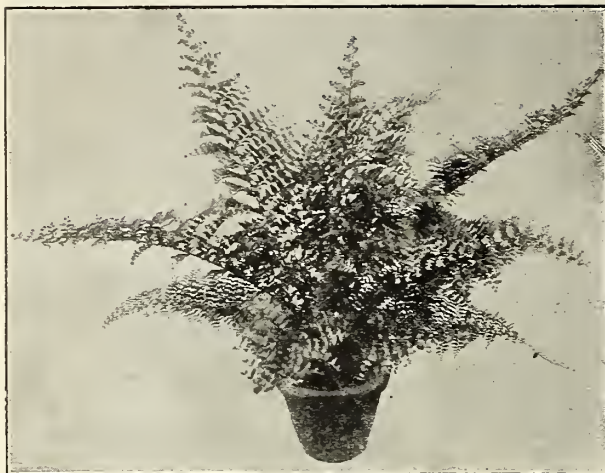
Double Pink. The old popular variety.

PRIMROSE

Each, 25 cents; dozen, \$2.50.

Primula Forbesi. Baby Primrose. Needs but little care. It forms a dense rosette of fleshy leaves, from which spring the flower stems about 12 inches tall; produces rosy-lilac flowers produced in great abundance.

Primula obconica grandiflora. Perpetual blooming, bearing large trusses of flowers on long stems, well above the foliage; color a pale lilac and pink.



VERONA FERN (One of the best plumed type.)

VICK'S FERNS

Ferns are indispensable in almost any scheme of plant decorations for house, window or conservatory. Either alone or scattered among other plants and flowers they work wonders in giving the house interior a refreshing, cheerful appearance.

The six varieties first named are especially adapted to use in fern dishes. The six are sufficient for a dish eight inches in diameter.

Each, 25 cents; dozen, \$2.50.

- Adiantum cuneatum*. The popular Maiden Hair Fern.
- Aspidium Tsussimense*. A pretty species with dark green foliage.
- Cyrtomium falcatum*. The "Holly Fern." Large, dark green glossy leaves.
- Pteris Cretica albo-lineata*. A pretty and useful variegated variety; leaves green and white.
- Pteris Wimsetti*. Fine for fern pans and house culture; finely crested.
- Pteris Wilsoni*. Leaves round and crested. Splendid for house culture.

Varieties of the Boston Fern Class

This class contains the most popular and by far the most satisfactory of all house ferns. The hardiness, ease of culture, and handsome fresh appearance of all varieties of Boston Ferns make them especially desirable for house decoration.

Each, 35 cents; four for \$1.25; dozen, \$3.50.

- Boston Fern.** One of the most satisfactory of decorative plants for house culture. The handsome green fronds attain a length of four to five feet, and droop so gracefully on every side that it is often called the Fountain Plant. It always has a fresh, healthy appearance, and is very attractive.
- Roosevelt.** The divisions of the wide drooping fronds are beautifully undulated and the fronds are more graceful than those of the Boston Fern. Strong, rapid grower. A new variety and one of the finest.
- Scotti, or Dwarf Boston Fern.** A very dwarf and compact form of the Boston Fern. The fronds are short and narrow, of a graceful recurring form. Plants of small size make nice specimens in a short time.
- Teddy, Jr.** Fronds beautifully undulated like those of the Roosevelt, but the plants are very dwarf and compact. A beautiful fern.
- Verona.** One of the newer most improved varieties with finely cut plumed foliage of striking appearance.

VICK'S FUCHSIAS

No plants are more graceful and elegant than the Fuchsias. Their contrasting colors—white, carmine, rose and purple—make them very attractive. The plants bloom so profusely that they require an abundant water supply. Therefore, plants should be wet thoroughly and often.

Each, 30 cents; dozen, \$3.00.

- Avalanche.** Corolla violet, sepals crimson.
- Bouquet.** Flowers of beautiful form; sepals a clear coral color; corolla blue.
- Jeanne Summary.** Tube and sepals bright crimson scarlet, corolla white.
- Jupiter.** Tube and sepals scarlet; corolla rich royal purple. Extra large size.
- Little Beauty.** Tube and sepals bright red; corolla rich purple.
- Mary.** The drooping flowers, over two inches long, are a brilliant crimson-scarlet, and stand out prominently against the dark green foliage.
- Rosaina Patrie.** Tube and sepals carmine. Corolla white.
- Storm King.** Dwarf grower. Tube and sepals red. Corolla white.
- Victor Hugo.** Flowers large, very double; sepals bright crimson; the center or corolla violet purple, marbled with red. A unique and beautiful flower.

VICK'S GERANIUMS

Each, 30 cents; dozen, \$3.00.

SINGLE

- A. Carre.** Crimson scarlet.
- Marguerite de Layre.** Pure white.
- Jules Lematrice.** Light pink.
- Mrs. E. G. Hill.** Bright salmon.

DOUBLE

- Alphonse Ricard.** Bright orange-red. Trusses very large.
- La Pilot.** Very dark scarlet.
- E. Anatole Roseleur.** Deep rose pink.
- Madame Jaulin.** Center of flowers delicate pink, bordered with pure white.
- Madame Laudrey.** Clear salmon, center shading to copper, with white eye.
- Madame Buchner.** Double; snow white. A strong grower.
- S. A. Nutt.** Double. Brilliant deep blood-red, with maroon shadings. Rather tall; vigorous grower. Truss large. One of the finest bloomers.

DOUBLE IVY-LEAF

This class has thick, glossy, ivy-shaped leaves. The plants are drooping in habit, and excellent for baskets, vases, and house plants.

Rose Pink Light Pink

SWEET-SCENTED

- Dr. Livingstone.** Leaves finely divided, very fragrant.
- Rose.** This is one of the most desirable of the scented varieties.

OXALIS

Free-blooming bulbs, fine for pots, vases, or for edging walks and beds. Plant three inches apart. Two colors, Rosy Crimson and Rosy Lilac.

Dozen, 25 cents; 100, \$1.00.

RUBBER PLANT

Ficus elastica. One of the best plants grown for table or house decoration. It succeeds well with ordinary treatment. The glossy green leaves seem especially formed to resist the dust and gas to which plants in dwelling-houses are exposed. Strong plants, \$1.00.

UMBRELLA PALM

Cyperus alternifolius. A beautiful, easily-grown plant, that is admirably adapted to many different modes of culture. It makes a very showy plant for pot culture, is one of the best for ferneries, while for the aquarium it is without an equal. Large plants, each, 25 cents; dozen, \$2.50.



FUCHSIA, LITTLE BEAUTY

Bring Sunny California into your home throughout the cold winter with some of the house plants and bulbs offered here

CLIMBING AND TRAILING VINES - For Indoor Growing

SMILAX

A very graceful climbing plant, with dense green foliage. Very fine for house culture. Each, 25 cents; dozen, \$2.50.

PASSIFLORA—Passion Vine

A class of rapid growing climbing plants well adapted for house culture in winter or for training over porches, etc., in summer. The flowers are about four inches in diameter, petals pear-shaped and very symmetrically arranged. Constance Elliott. The flowers are pure white.

Each, 25 cents; dozen, \$2.50.

JASMINE

Jasminum grandiflorum. A favorite greenhouse climber and house plant everywhere; one of the sweetest of flowers. Foliage fine; flowers white, star-shaped and very fragrant, blooming from November till May. Easy of culture. Each, 25 cents; dozen, \$2.50.

SWAINSONIA ALBA

A fine graceful plant, very useful for hanging baskets and porch boxes. Covered with beautiful sprays of large pure white, waxy, sweet pea-like flowers. Each, 30 cents; dozen, \$3.00.

VICK'S CHRYSANTHEMUMS

Hardy Pompon Chrysanthemums

These are the very best of all Chrysanthemums for planting out of doors, and they are growing in popularity each year. Are perfectly hardy. The flowers are not injured by the early frosts, and may frequently be seen in gardens about Rochester as late as November. While the flowers are not as large as the Large-Flowering varieties, the sprays of bloom are extremely graceful and beautiful and are very valuable as cut flowers.

They can easily be transplanted to pots, and thus brought inside to furnish beautiful double flowers during the late fall.

Strong vigorous plants, each, 35 cts.; doz., \$3.50

Allentown. Bronze yellow.	James Boon. Pure white.
Astarte. Bright golden amber.	Julia Lagravere. Crimson-maroon.
Diana. Large flower; finest purewhite.	Lilla. Tall; deep red.
Edna. White, pink shadings, yellow center.	Miss Julia. Very double, bronze yellow.
Gold Standard. Golden yellow.	Orea. Light pink.

Large-Flowering Chrysanthemums

The glorious blooms of the Large-Flowering Chrysanthemums are easily the largest and most showy flowers of late autumn and early winter which makes them very valuable potted plants. They are also suitable for out-of-doors. In a warm fall the Large-Flowering Chrysanthemums bloom well into October and November in the open ground.

Strong vigorous plants, each, 35 cts.; doz., \$3.50

Pacific Supreme. A beautiful shade of pink; early.	Chrysolora. Fine golden yellow; large flower; early
Pink Ivory. Beautiful shell pink.	Comoleta. Bright yellow. Fine for pot culture.
Red Duckhan. Very large flower; purplish crimson.	Ivory. Dwarf. Free flowering, snow white, incurved.
Unaka. Beautiful shade of lavender pink; very early.	Major Bannaffon. Soft yellow, incurved type; large.
White Coombes. Largest pure white.	Mrs. Wm. Duckham. Beautiful golden yellow.



LARGE-FLOWERING CHRYSANTHEMUM - Major Bannaffon

HARDY PERENNIAL PLANTS

PLANT THEM THIS FALL

We strongly advise our friends to plant all kinds of hardy perennials in the Fall. If the work is done carefully, you will gain nearly a year's growth and will get the full benefit from them next season.

In planting, spread the roots carefully and pack fine dirt solidly around them so as to exclude all air space. A protection of leaves or straw litter is a wise precaution for the winter months. Remove this covering early in the spring and the plants are ready to start growing at the first breath of warm weather. Many varieties are very effective when planted in borders or beds with spring flowering bulbs of Hyacinths, Tulips and Narcissus.

ACHILLEA

Each, 30 cents; dozen, \$3.00.

The Pearl. The blossoms are of purest white, and so large that they resemble a Pompon Chrysanthemum. Hardy, and will thrive in almost any situation. Very desirable for the garden or cemetery; blooms nearly the whole season.

Millifolium roseum. Foliage very finely cut; flowers pink. A continuous bloomer.

Tomentosum. Bright yellow flowers. Very fine for rockeries.

HARDY ASTERS—Michaelmas Daisies

Lady Trevelyan. White, early.
Pyramidalis. Lavender Blue.
White Queen. White, late. Each, 25 cents; dozen, \$2.50.

ARMERIA

Sea Pink or Thrift. A very pretty and interesting hardy alpine plant; fine for border or rockery. Flowers rose-pink. Each, 25 cents; dozen, \$2.50.

ALYSSUM

Saxatile Compactum—"Basket of Gold." An indispensable plant for the rocky or border, growing one foot high and producing masses of broad flat heads of bright yellow flowers during the month of May. Each, 25 cents; dozen, \$2.50.

NEW ANCHUSA ITALICA

Dropmore Variety

One of the most valuable of the recent introductions. The plants are vigorous and branching, growing from three to five feet in height. The flowers are borne on long pyramidal, graceful spikes; color beautiful, clear, bright blue, a shade peculiar to this variety. Its blooming season is June and July.

Each 30 cents; dozen, \$3.00.

At above prices we prepay postage to fifth parcel post zone. Six plants of one variety at dozen rate.



ANEMONE—"WHIRLWIND"

VICK'S DOUBLE ANEMONE

"Whirlwind"

Will bloom next season if you plant it outdoors this fall.

The double variety "Whirlwind" has all the free-blooming and other good qualities of the single white, with additional greater hardness of plant and more lasting blooms. Each, 25 cents; dozen, \$2.50.

Japanica Alba. Flowers pure white with yellow center, single. Each, 25 cents; dozen, \$2.50.

Queen Charlotte. An early-flowering pink Anemone, of vigorous growth. It begins to flower in August, and continues to bloom until November, becoming more attractive each day. Flowers semi-double, broad, perfectly formed, and of a pleasing shade of silvery pink.

Each, 25 cents; dozen, \$2.50.

AQUILEGIA or COLUMBINE

Each, 25 cents; dozen, \$2.50.

Chrysantha. The beautiful golden-yellow Columbine.

Cœrulea. The true Rocky Mountain Columbine. Flowers azure blue and white.

Skinneri. Scarlet and yellow.

Erskine Park Hybrids. Beautiful hybrids. A fine selection of the most popular colors.

Single Mixed. All colors in a fine mixture.

Double Mixed. Flowers very large, full and double.

ARABIS or ROCK CRESS

Alpena. One of the most desirable of the very early spring-flowering plants; especially adapted for edging and for the rock garden, but does equally well in the border, forming a dense carpet, completely covered with pure white flowers. Nice for cutting; lasts a long time in bloom.

Each, 25 cents; dozen, \$2.50.

BOLTONIA

Among the most showy of our native hardy perennials. Attains a height of four to five feet, bearing single aster-like flowers in large clusters. Very free-flowering.

Asteroides. Pure white. Each, 25 cents; dozen, \$2.50.

CHINESE LANTERN PLANT

Physalis Franchetti. An ornamental variety of Winter Cherry grown principally for its very attractive balloon-like husks or pods, which turn bright red and resemble Chinese paper lanterns. These may be dried and last forever, making splendid winter decorations. Each, 35 cts., doz., \$3.50.

Strong, well-grown Vick Quality Plants, carefully packed, by Parcel Post or Express, can be sent anywhere

CAMPANULA or Bell Flower

Each, 25 cents; dozen, \$2.50.

Carpatica. (Carpathian Hare-Bell.) A pretty, compact species, not exceeding eight inches high; flowers clear blue, one inch in diameter.

Carpatica Alba. White flowers.

Medium. Old fashioned Canterbury Bell. In three colors, pink, blue and white. Our stock is all grown from the finest strain of seed.

Persifolia. Grows one and one-half feet high, and produces a great number of blue flowers in loose clusters, from June to October.

Persifolia alba. A white form of the above.

Pyramidalis. A most attractive plant for the border, forming a perfect pyramid, covered with large blue and white flowers.

Pyramidalis alba. Same habit as Pyramidalis, but the flowers are white.

CERASTIUM or "Snow in Summer"

Tomentosum. A very pretty dwarf, white-leaved edging plant, bearing small white flowers. Fine for rockery. Each, 25 cents; dozen, \$2.50.

DELPHINIUM or Hardy Larkspur

The Hardy Larkspurs are easily among the finest of all our perennial plants. The prevailing colors are rich, clear shades of blue. The taller kinds produce long spikes of bloom that are strikingly decorative, and last a long time as cut flowers. The plants have a long season of bloom, which can be greatly prolonged by keeping the seed stalks cut out and supplying plenty of water. The dark, handsome foliage is neat and attractive throughout the whole season. The plants are perfectly hardy. Each, 25 cents; dozen, \$2.50.

Gold Medal Hybrids. The most beautiful and most highly developed Larkspurs we have ever seen in a perfectly fascinating array of colors and forms, - single, double, semi-double in all shades, some with dark center, some light center, - no two exactly alike.

Belladonna. The finest light blue yet produced; clear, turquoise-blue flowers, very free blooming. 2 feet high.

Formosum. A most brilliant deep blue, the finest blue flower known among our hardy plants.

Formosum Coelestinum. A charming, delicate blue.

Bee Larkspur. Interesting for the manner in which the petals are folded up in the center of each flower, much resembling a bee. Flowers of lighter shade than Delphinium Formosum.

COREOPSIS

Lanceolata

Grandiflora

A most popular hardy plant. Flowers are a rich golden yellow in color, graceful and invaluable for cutting. Blooms very abundantly during the last of June and continues in flower during the entire summer and autumn. Each, 25c.; doz., \$2.50.

DIGITALIS or FOXGLOVE

The Foxgloves are very stately and highly ornamental plants when well grown, with flower stems at least three feet in height. They are fine for the mixed border, or planted singly in half-shady places near a walk or drive. The racemes of flowers are often two feet in length, containing scores of prettily-spotted thimble-shaped flowers. Perfectly hardy. Each, 25 cents; dozen, \$2.50.

St. Louis, Mo., 4-11-23

My order of plants arrived all in good condition. The order of seeds came a week or more ago.

I had wonderful success with the seeds from you last year so I know we will have just as great a wealth of blossoms this summer. I am starting a small Perennial garden which I will add to from year to year - as our space will permit.

Mrs. H. C. Belleville



DIGITALIS or FOXGLOVE



GAILLARDIA
GRANDIFLORA
OR
BLANKET
FLOWER

HOLLYHOCKS

Double Hollyhock. This flower is justly becoming more popular every day. We have excellent healthy plants, grown from seed, that will flower the first summer. Give the plants a light covering of coarse litter for winter protection. In six separate colors—White, red, pink, purple, yellow, maroon. Each, 30 cents; dozen, \$3.00.

"Allegany," New Fringed Perpetual-Blooming. The flowers come single, semi-double, and double. They are seldom less than five inches across, and are beautifully fringed, of fine form and delicate texture. Two to four buds form at the base of each leaf, where the old style Hollyhocks have but one or two. These buds open in succession, prolonging the flowering season until autumn. Fine plants that will bloom the first season. Mixed colors. Each, 30 cents; dozen, \$3.00.

HIBISCUS—Rose Mallow

Tall, hardy, free blooming, with showy flowers. Height from three to five feet. July to Sept. Each 30 cents; dozen, \$3.00.

Crimson Eye. The flowers are immense in size. The coloring is of the purest white, with a large deep spot of velvety crimson in the center of each flower. A well developed plant will produce several hundred of these flowers during the season.

Militaris. Delicate flesh pink flowers, tinged with a deeper color toward the center.

Moschentos. Flowers six inches in diameter, light rosy red, with a dark center.

LOBELIA—Cardinal Flower

Cardinalis. An excellent border plant; it grows two feet high and produces rich, fiery cardinal flowers from early in August until late in September. The plants will thrive in any ordinary garden soil, but prefer a moist, deep loam where they will not suffer from drought.

Each 25 cents; dozen, \$2.50.

LYCHNIS

Chalcedonica—Maltese Cross—Jerusalem Cross. A most beautiful hardy perennial, growing three feet high, and producing brilliant scarlet flowers all summer long. Very desirable for mass planting and for a combination of colors in the border. Each, 30 cents; dozen, \$3.00.

Viscaria splendens. Single rosy-pink flowers, very showy; blooms in June. Each, 30 cents; dozen, \$3.00.

LYTHRUM Roseum Superbum

A strong-growing, shrub-like plant, producing large spikes of rose-colored flowers from July to September. Grows three to four feet high.

Each, 25 cents; dozen, \$2.50.

Gaillardia Grandiflora or Blanket Flower blossoms all the summer long and makes a gorgeous show of color in the garden

GAILLARDIA or Blanket Flower

Grandiflora. Among the most attractive and effective of our hardy perennial plants. Will thrive in almost any position or in any soil. One mass of bloom from June till autumn. The gorgeous flowers, two to three inches in diameter, dark red-brown in center, with bands of crimson-orange and vermilion, are borne on stems, eighteen to twenty-four inches long. When used for filling in front of shrubbery Gaillardia adds a dash of color which is very effective. Each, 30 cents; dozen, \$3.00.

FORGET-ME-NOT

Myosotis palustris. The true perennial Forget-me-not. A variety that is always in flower. Each, 25 cents; doz, \$2.50.

GYPHOPHILA—Baby's Breath

Paniculata. Gypsophilas are valuable for bouquet making, either green or dried. They are very graceful and easily cultivated. Should be in every garden. Flowers white. Plants two feet high. Blooms, July and Aug. Each, 30 cents; dozen, \$3.00.

GENISTA TINCTORIA—(Dyer's Greenweed)

Plants twelve inches high; are covered in the summer months with bright yellow pea-shaped flowers. Each, 25 cents; dozen, \$2.50.

HELIANTHEMUM VULGARE—Sun, or Rock Rose

A most desirable hardy, evergreen, low-growing plant. Suitable for the border, rocky, or a dry, sunny location. During the months of July, August and September, the plants are covered with a mass of blooms of various colors. Each, 25 cents; dozen, \$2.50.

HELIANTHUS—Hardy Sunflower

These varieties of Helianthus are perfectly hardy in this locality, but in colder regions a protection of coarse litter will be required. The plants attain a height of about four feet, and in their blooming season, August and September, they are nearly covered with bright golden-yellow double flowers, about the size of a Dahlia; they are very satisfactory for cutting.

Each, 30 cents; dozen, \$3.00.

Helianthus latæfrons. Plant of distinct habit, forming a pyramid of lovely flowers and foliage. Flowers, golden-yellow, single.

Maximiliana. Golden-yellow, with reddish brown center. Single.

Multiflorus. (Double hardy Sunflower.) Large, double Dahlia-like, golden-yellow flowers in great profusion during July and August. Grows about four feet high. Very beautiful.

Rigidus. Single. Fine upright habit of growth. Light yellow maroon center. About three feet high.

HYACINTHUS

Candicans. Summer Hyacinth. A beautiful and stately plant, with stems three to four feet high. It has large, pure white pendant, funnel-shaped flowers, in long racemes. Very fragrant. In the North the bulbs should be dug in the fall and wintered the same as Gladiolus.

Each, 25 cents; dozen, \$2.50.

LATHYRUS—Perennial Peas

One of the best of the perennial climbers. It is very hardy and will succeed in almost any location. It produces clusters of large flowers which remain in bloom for a long while. Rose or Crimson. Each, 25 cts; dozen, \$2.50.



HIBISCUS—ROSE MALLOW.



TRUE FLAG IRIS

PENTSTEMON

Most useful hardy perennial, blooming from June until autumn. Very fine for border or rockery. Flowers born on tall spikes, resembling Gloxinias. Grows about three feet high. *Coerulea*. Flowers blue. Each, 30 cents; dozen, \$3.00.

PHYSOSTEGIA**False Dragon-Head**

One of the most beautiful of our summer flowering perennials, bearing long spikes of globular shaped flowers resembling a giant feather. Each, 25 cents; dozen, \$2.50. *Virginica*. A bright pink. Four feet. *Virginica alba*. White. Two feet. *Speciosa*. A very delicate light pink. Grows four to five feet high.

HARDY PINKS

These pinks are perfectly hardy, and will remain in the open ground all winter without protection.

Field grown plants, each, 35 cents; dozen, \$3.50.

Comet. A fine shade of red; flowers double, clove scented.

Her Majesty. Flowers very large, fringed, very double, and pure white.

Fragrance delicious, clove scented. Long stiff stems support the flowers.

Souvenir de Salle. Soft rosy pink; large as a carnation; beautifully formed and very double.

White Reserve. A nicely fringed white. Always in bloom.

HARDY POPPY

Each, 30 cents; dozen, \$3.00.

Iceland Poppies. The plants are perfectly hardy, and bloom the entire season. The flowers are about the size and shape of those of the well-known Shirley Poppy, and are borne on long dry stems. The delicate silken texture of the flowers, nodding on slender stems, produces an exquisitely dainty effect. Charming as cut flowers, lasting well if cut when the buds are opening. White, yellow, and orange.

Oriental Poppies. The single large Oriental Poppy is one of the most striking and showy of all the hardy garden plants. The tall stems, three feet in height, bear great flowers of brilliant scarlet six or eight inches across. The plants thrive well either in the full sun or in partial shade. They are a great addition to the hardy border, and are of especial value among shrubbery, lighting up the usually dark and somber clumps of shrubs. The flowers are splendid for cutting, lasting well if cut as they are opening.

The plants bloom in June, and they disappear during July and August, to reappear again in the fall.

HERBS

English Lavender. Each, 25 cents; dozen, \$2.50.

Mammoth Broad-Leaved Sage. Each, 25 cents; dozen, \$2.50.

Orders for plants are filled at our greenhouses where the plants are grown, insuring prompt service and fresh plants.

THE IRIS, or Fleur-de-Lis

THE IRIS, or Flower-de-Luce, the *Fleur-de-lis* of the French, is one of the most beautiful of hardy garden plants. There are several distinct species of these plants, natives of different regions, each representing many garden varieties, the flowers of which are of peculiar and handsome form, beautifully colored and marked, and equaling in beauty the most showy orchids. The plants are hardy in the garden. Some kinds are desirable for the greenhouse.

Iris will grow almost anywhere; in out-of-the-way corners, among shrubbery, or wherever they have a reasonable amount of soil and moisture. They require very little care, and will remain in the ground from year to year, gradually spreading, and increasing the size and beauty of the floral display. It is best to divide the roots every two or three years.

TRUE FLAG IRIS Fleur-de-Lis

Perfectly hardy. They bloom in May and June, when there is a scarcity of other flowers. Plant three inches deep.

Each, 25 cents; dozen, \$2.50.

Celeste. Standard and falls delicate azure blue.

Gesneriana. White and lavender.

Madame Chereau. White, daintily edged light blue.

Madcap. Lavender and purple.

Souvenir. Old gold and purple, tall grower.

Pharaon. Blue, shaded rose color.

Florentina. White lavender vein.

Canary. Rich yellow.

Atropurpurea. Old blue, very fine.

Velveteen. Golden bronze and rich purple.

JAPANESE IRIS

The flowers of the Japan Iris are of the richest colors, ranging from white to purple, with delicate markings and veinings and quite different in form from those of the True Flag Iris, being much flatter and larger. Named varieties, all double. Blooms just after the True Flag Iris.

Each, 30 cents; dozen, \$3.00.

Blue Danube. Deep indigo blue, violet shadings.

Gold Bound. Pure white.

Hyde Park. Reddish purple, striped white.

Mahogany. Dark red, shaded maroon.

Mars. Reddish purple, striped and blotched white.

Paragon. Rich velvety purple.

Pyramid. Lilac blue, veined white in center of each petal.

Spotted Beauty. White spotted with violet crimson.

ORNAMENTAL GRASSES

Ornamental Grasses are very effective in borders and in clumps among shrubbery. They grow very easily and when once started, practically take care of themselves. Each, 30 cents; dozen, \$3.00.

Eulalia. Handsome, tall, ornamental grasses for the open lawn, or for clumps in the borders of shrubbery. Leaves beautifully variegated.

Eulalia Japonica zebрина. Stripe across the leaf instead of lengthwise.

Eulalia Japonica variegata. Leaves beautifully striped lengthwise.

Eulalia univittata. The most beautiful of all Eulalias. Foliage narrow dark green, with a silvery white midrib.

LUPINUS, Lupine

Polyphyllus. Strong plants, about three feet high, with long spikes of pea-like flowers in early summer.

Mixed colors. Each, 30 cents; dozen, \$3.00.

MONARDA DIDYMA

An exceptionally fine, hardy perennial for planting in the garden or in a mixed border. The plant grows about 2½ feet high, branching freely, and bears multitudes of bright red, showy flowers all summer, which are surpassed in intensity of color only by the Cardinal Flower. For a mass of color it is very striking. Thrives well in the shade.

Each, 30 cents; dozen, \$3.00.

PYRETHENUM

Sometimes called Spring Flowering Chrysanthemum. Hardy perennial plant of easy culture, with beautiful, large, daisy like flowers in a variety of brilliant colors, ranging from intense scarlet to pure white. The flowers are borne on long stems and are splendid for cutting, lasting in water longer than almost any other flower. The plants have a long season of bloom.

Each, 30 cents; dozen, \$3.00.

PLATYCODON Grandiflorum

The Chinese Bell Flower. In bloom the entire season. The flower resembles *Clematis* in size and color. Two varieties, blue and white, two feet high.

Each, 30 cents; dozen, \$3.00.

PERENNIAL PHLOX

The Perennial Phlox, which is one of the most popular and satisfactory of all hardy plants, give one a splendid idea of a diversity of uses to which those plants may be put. As a border plant Perennial Phlox is extremely effective; massed in a bed, it makes a gorgeous spectacle with its magnificent spikes of showy and lasting flowers, and scattered among the early flowering hardy plants it is very attractive. Perennial Phlox grows from two to three feet high. Its blooming period normally is from June 15th to late fall. By cutting away each flower stem as soon as it is through blooming, other flowers will appear, thus prolonging the blooming period and increasing the size of the flowers.

Strong field-grown plants. Each, 30 cents; dozen, \$3.00.

Coquelicot. Bright scarlet.
Cyrano. Large truss of pink flowers.
Eclairer. Flowers of immense size, carmine, salmon center, rosy white star.
Esclamonde. Rosy lilac, shaded white; large purple center with white halo.
Faust. Bright rose.
Independence. White flowers, very early.
Isabey. Orange-salmon, center purplish crimson.
Jeanne D'Arc. Very large, pure white flowers; a very strong grower.
Le Mahdi. Violet purple.

Lothair. Rich salmon, crimson eye.
M. Bezanson. Fiery crimson, velvety purple eye.
Miss Lingard. White with delicate pink center; long spike; early.
Pantheon. Salmon-rose; a fine variety, and should be planted more extensively.
Purity. The best pure white.
Richard Wallace. Pure white with distinct violet eye.
Rosetta. Deep rosy crimson-violet.
Sir Edwin Landseer. Brilliant crimson.
The Pearl. Pure white.

PHLOX SUBULATA—Moss Pink

Fine for the rocky and border, gradually spreading, and forming a beautiful rich green carpet covered with fine pink star-shaped flowers. An early blooming plant, flowering in May.
The Bride. Pure white, with pink eye. Each 25 cents; per dozen \$2.50.

VICK'S PEONIES

THIS queen of herbaceous Perennial Plants deserves its increasing popularity because of its beauty, range of color and form, extreme hardiness, ease of culture and freedom from plant pests and disease. You will find below a very choice assortment of different colors and types including the early, mid-season and late kinds. Our Peonies are grown under the direction of an expert and are of high quality and true to name. At prices below we prepay postage or express as far as the 5th zone. Special prices on large quantities.

Achille. Large rose-type flower, pale pink shading to lilac white; fragrant; each, 60 cents.
Alexander Dumas. Medium size; light violet rose; crown type; creamy white collar of narrow petals mingled with white center petals; fragrant; each, 75 cents.
Augustin D'Hour. Large bomb type flower; dark brilliant Solferino red slightly silvery reflex; each 85 cents.
Avalanche. Large compact crown type; milk white center; flecked crimson red; very choice; each \$1.00.
Couronne D'Or. Large semi-rose type; pure white with ring of yellow stamens around a tuft of center petals; tips carmine; each 85 cents.
Duchess D'Nemours. Pure white; crown type; sulphur white collar; no flecks; fragrant; very early; each 60 cents.
Edulis Superba. Large; bright mauve pink; flat crown type; very fragrant; the earliest deep pink, usually blooms by Decoration Day, each 60 cents.

The proper time in which to plant Peonies is from the middle of September until the ground freezes.



ROW OF HARDY PEONIES



VICK'S HARDY PERENNIAL PHLOX

Festiva Maxima. Probably the most popular pure white rose type Peony; center slightly flecked crimson; early; each 60 cents.
Fragrans. Dark pink; compact homb type; medium size; fragrant; late; each 60 cents.
Grandiflora Nivea Plena. The earliest white; large globular rose-type flower; very fragrant; each \$1.00.
Louis Van Houtte. Medium size semi-rose type; deep carmine rose; tipped silver; late; each 60 cents.
Madame Calot. Large rose-type; pale shell-pink, center shaded darker; collar tinted silver; fragrant; early; each 60 cents.
Madame De Vernville. One of the best pure white Peonies; bomb type, slightly flecked carmine; fragrant; early; each 85 cents.
Marie Lemoine. Large rose-type; pure white with creamy white center. tipped carmine; fragrant; the latest white to bloom; extra choice; each 85 cts.
Rubra Superba. Large compact rose-type; crimson; the best very late red; each 85 cents.

For border planting or for beds and groups of flowers it would be hard to find anything better than the Peony.



RUDBECKIA, PURPUREA

RUDBECKIA or Cone Flower

The Rudbeckias are very decorative plants, and are excellent for shrubberies, flower borders and along carriage drives. They thrive in any good garden soil and grow so rapidly that a few small plants soon become large clumps and produce hundreds of flowers.

LACINIATA *flora plena*—Golden Glow. The best known and most popular ever-blooming hardy plant grown. It is covered during the season with masses of rich golden-yellow double flowers on long stems that make it suitable for cutting. Attains a height of 6 to 8 feet. Each, 30 cents; dozen, \$3.00.

Newmani. The flowers are single, golden-yellow, with black center; the plant grows 3 feet high and blooms from July to October. Each, 30 cents; dozen, \$3.00.

Purpurea, or Giant Purple Cone Flower. Flowers reddish wine-purple. Grows about two to three feet high and blooms from July to October. Each, 30 cents; dozen, \$3.00.

SALVIA PRATENSIS or Hardy Sage

A very strong, hardy plant, twelve to eighteen inches high which bears showy spikes of deep blue flowers from June to September. Each, 25 cents; dozen, \$2.50.

SEDUM, Stonecrop

Each, 25 cents; dozen, \$2.50.

Excellent fleshy leaved plants for the rockery, carpet bedding, or covering graves.

Album. Low-growing; pretty white flowers.

Acre. A pretty species for rockwork; forms a neat green carpet.

Pulchrum. A low-growing variety. Flowers pink.

Spectabile. A strong upright grower, with heads of showy rose-colored flowers.

Telephium. The well-known "Live Forever." Flowers pink, spotted white.

SCABIOSA or Pin Cushion Flower

Caucasica. One of the best hardy plants, producing beautiful lilac colored flowers from June until fall. 18 to 25 inches high. Each, 25 cents; dozen, \$2.50.

SHASTA DAISY—New Improved Alaska

A fine hardy perennial, 12 to 18 inches high. The flowers are pure white, with a bright yellow center, average about four inches in diameter, and are borne on long, stiff, wiry stems. Valuable for cutting, remaining fresh for two weeks or more. Each, 30 cents; dozen, \$3.00.

SWEET WILLIAM or Dianthus Barbatus

The best varieties of Sweet William have exceedingly beautiful colors, and are very large and almost perfect in form, with trusses of great size. They are fine as cut flowers. The plants are perfectly hardy. **Holborn Glory.** Beautiful shades, center and margin of white. **Dunnett's Crimson.** Dark crimson. **Pink Beauty.** Beautiful salmon pink. **Scarlet Beauty** Any variety. Each, 25 cents; dozen, \$2.50.

VALERIANA RUBRA

An old-fashioned plant, about two feet high, which blooms from June to October. The flower heads are large and beautiful, bright red in color and of spicy fragrance. Its long spike of fragrant flowers make it an excellent border plant and suitable for cutting. Each, 25 cents; dozen, \$2.50.

VERONICA—Speedwell

Spicata. One of the prettiest of the spring flowering herbaceous plants, bearing pretty blue flowers in long spikes. Valuable both for the garden and for cut flowers. They should be in every garden.

Each, 25 cents; dozen, \$2.50.

Rupestris. A fine rock plant, growing three or four inches high, whose thickly matted green foliage is hidden in spring under a cloud of bright blue flowers.

Each, 25 cents; dozen, \$2.50.

YUCCA—Spanish Bayonet

Filamentosa. One of the most decorative and striking of the hardy plants. It is erect and stately, perfectly hardy, and has sharp pointed leaves and large spikes of creamy white, bell-shaped flowers. It grows about four feet high and blooms in August.

Each, 30 cents; dozen, \$3.00.

TRITOMA—Flame Flower

McOweni. A charming variety, coming into bloom very early; stems long, truss rather loose color orange scarlet and yellow. Each, 35 cents; dozen, \$3.50.

Pfitzeri. A great improvement on the old *Tritoma uvaria grandiflora*, or Red Hot Poker.

The flower spikes which are produced with considerably more freedom than in the old variety, are of gigantic size; frequently $4\frac{1}{2}$ feet high, with heads of bloom over twelve inches long, of a rich orange-scarlet, shading to salmon-rose at edge. Flowers from July until frost.

Each 25 cents; dozen \$3.50.

Plant Shrubs This Fall

Do not wait until Spring to plant your shrubbery, perennials, roses, trees, etc. Make your plans now and set them out this Fall. You will gain nearly a years growth by having the plants well established in the soil and ready to start active growing at the first breath of spring. It is wise to protect the roots of the stock set out in the Fall with a covering of straw manure or leaves for the first winter. Make your selections from the pages following.



TRITOMA

Our greenhouse farms at Barnard N. Y. this year were filled full of the finest stock of Perennials we have ever grown.

VICK'S HARDY SHRUBS AND VINES

At prices indicated here we prepay postage or express charges on all shrubs, vines and roots as far as the fifth parcel post zone from Rochester except as otherwise expressly stated.

ALTHEA

Rose of Sharon. Beautiful, erect-growing shrubs, of the easiest culture, bearing large showy flowers in early fall. Very desirable because it flowers when few other shrubs are in bloom. Grows 6 to 8 ft. high. Double Red, Double White and Double Pink. Each, 75 cents; dozen, \$7.00.

BERBERIS—BARBERRY

Japanese. A handsome low-growing form of the Barberry, of Japanese origin. Foliage abundant, leaves small, obovate; flowers reddish; berries bright crimson. In autumn the leaves turn a bright red, making a fine display. A beautiful plant for the lawn or the front of the shrubbery, or for a low-growing ornamental hedge. Each, 75 cents; dozen, \$7.00, postpaid.

Smaller plants, just right size for hedges, dozen, \$4.00; 100, \$30.00; by express collect,

CALIFORNIA PRIVET

The best known plant for hedges. It is very hardy, grows rapidly, and produces very abundant foliage. Can be trimmed frequently to conform to the individual idea of beauty and symmetry.

Plants, 12 to 18 inches, 85 cents for 10; \$6.00 per hundred.
 " 18 to 24 " \$1.00 for 10; \$7.50 per hundred.
 " 24 to 36 " \$1.25 for 10; \$9.00 per hundred.

By Express or Freight, collect.
 Special prices on larger quantities.

CALYCANTHUS or Sweet-Scented Shrub

Very desirable on account of the peculiar and very pleasing fragrance of its wood. The foliage is handsome and the flowers are of a rare chocolate color, with an agreeable perfume. It blossoms in June and at intervals throughout the summer. Attains a height of six to eight feet.

Each, 75 cents; dozen, \$7.00.

CLETHRA ALNIFOLIA

The Clethra is worthy of a front place in every garden. It is a neat, upright-growing shrub, easily cultivated and very hardy, blossoming every season even after a severe winter. The foliage is dark green and lustrous, fading with yellow tones. The flowers are pure white, borne on spikes three to six inches long and very fragrant; a bed of Clethra will perfume the air for a great distance, and a single sprig will sweeten a whole room. The Clethra has also a practical, value; it is in great demand for the honey-bee to feed upon, its honey being almost white, thick and of fine flavor. 5 to 7 ft. Each, 75 cents; dozen, \$7.00.

CORNUS or Dogwood

Cornus Elegantissima. One of the finest variegated shrubs; of rapid growth; the leaves are broadly margined with white, while some are entirely white. 10 to 12 ft. Each, 75 cents; dozen, \$7.00.

Cornus Mascula. (Cornelian Cherry). A small tree, native of Europe, producing clusters of bright yellow flowers early in spring before the leaves start. 15 to 20 ft. Each, 75 cents; dozen, \$7.00.

DEUTZIA

Each, 75 cents; dozen, \$7.00.

Crenata latifolia. New. Large panicles of eighteen to twenty single blossoms. The flowers are pure white with a center of golden yellow. Very attractive.

Crenata Magnifica. New. A great acquisition. The pure white double flowers are over an inch in diameter. The plant is vigorous and the flowers are borne in large trusses. 2 to 2 1/2 ft.

Lemoinei. Flowers single, pure white, and entirely covering the branches. Pride of Rochester. One of the finest varieties, producing large, double white flowers; the backs of the petals being slightly tinted with rose. Blooms early in June. 4 ft.

Gracilis. Blooming in May or June, it forms a round dense bush, covered with snow-white flowers.

Candida. Profuse-flowering; generally hardy, and well adapted to ordinary soils. Double white flowers, borne in panicles.

HYDRANGEAS

Abrescens. This magnificent American Hydrangea is the most beautiful hardy flowering shrub introduced in many years. It attains a height of five to six feet, and about the same breadth. It is of more graceful habit than Hydrangea paniculata grandiflora. The form of the panicle is much like that of Hydrangea Hortensis. Trusses large and beautifully formed; the blooms are of the very largest size, pure snow white; the foliage is finely finished. Fine, strong, well-grown plants. Each, \$1.00; dozen, \$10.00.

Paniculata Grandiflora. One of the finest hardy shrubs in cultivation. The flower trusses are immense heads from nine to twelve inches in length and nearly as broad. Color purest white, changing to deep pink as the season advances. It blooms in July, at a time when no other shrub is in flower and remains beautiful until destroyed by frost. As hardy as a lilac bush. The plants we offer will bloom the first year. Each, \$1.00; dozen, \$10.00.

The Butterfly Bush with its charmingly graceful spikes of

EVERBLOOMING BUTTERFLY BUSH

Buddleia

The Buddleia is a magnificent new shrub that has given unbounded satisfaction wherever grown. It is perfectly hardy, thrives in all sorts of soils, grows vigorously from two to three feet high, and blooms the first season from spring planting. Add to this the extreme beauty of its flowers, which are borne in great profusion throughout the summer and continue until cut down by severe frost, and the fact that it also makes a splendid pot plant, and you have the explanation of its rapid growth in popularity since its recent introduction.

The flowers of the Buddleia are extremely beautiful. They are of a soft shade of lilac in color and are borne in dense cylindrical spikes, which, under liberal cultivation, are from twelve to fifteen inches in length and three inches in diameter. They have a very pleasing fragrance.

In the spring the old plants should be cut back to the ground and they will throw up a fresh, strong growth.

Extra large field grown plants, each, 75 cents; dozen, \$7.00.



EVERBLOOMING BUTTERFLY BUSH

FORSYTHIA (Golden Bell)

Forsythia Fortunei. These splendid old shrubs, growing eight to ten feet in height, light up the garden with glistening masses of yellow before the leaves appear in the early spring. Their bright golden flowers, often appearing before the snow is gone, vie with the Crocus as harbingers of spring. 6 to 8 ft. high. Each, 75 cents; dozen, \$7.00.

Suspensa. (Weeping Golden Bell). The long willowy branches arch very gracefully over to the ground, and are covered to the tips with trumpet-shaped yellow flowers in early spring.

Each, 75 cents; dozen, \$7.00.

LILACS

Lilacs have always been popular on account of their hardness, vigorous growth, abundant foliage and graceful and luxuriant sweet-scented flower panicles. The large flowered Red, White and Purple, are among the most desirable tall growing shrubs, attaining a height of eight to ten feet. The named varieties grow somewhat smaller.

At Highland Park in Rochester, which has one of the most complete collections of lilacs anywhere in the country, the varieties we list here stand out preeminently as the most desirable, because of their hardness, vigor, free-blooming qualities and beautiful shades.

Large flowered, red. Purple-red flowers, standard variety. \$1.00 each.

Large flowered, purple. Bluish-purple flowers, standard variety; always good. \$1.00 each.

Large flowered, white. Cream white flowers; very fine. \$1.00 each.

Pres. Grevy. The most popular blue variety. A profuse bloomer; flowers double, blue and very fragrant. \$1.00 each.

Charles X. Large shining leaves; trusses large, rather loose, flowers single, reddish-purple. \$1.00 each.

Ludwig Spaeth. Planted very extensively in all parts of the country. Trusses large, flowers single purplish red. Very desirable. \$1.00 each.

Frau Dammann. One of the most popular and a leading variety. Large panicles of single white flowers, in great profusion. \$1.00 each.

Josikaea (Josika's or Hungarian Lilac). Dark, shining leaves, and purple flowers in June, after the other Lilacs have done flowering. \$1.00 each.

At the above prices lilacs are sent by Express or Freight collect.

Bloom should have a prominent place in the border or on the lawn

SNOWBALL

Viburnum plicatum. Japan Snowball. The pure white flowers are very lasting, and the beautiful foliage adds greatly to its attractiveness. 6 to 8 ft.
Each, \$1.00; dozen, \$10.00.

Viburnum Opulus sterilis. The well-known Snowball. Produces large clusters of snow-white flowers in May. Each, 75 cents; dozen, \$7.00.

SPIREA, Meadow Sweet

Any of the varieties below, each, 75 cents, dozen, \$7.00.

Arguta. Flowers clear white and freely produced. The very best early-flowering white Spirea grown.

Anthony Waterer. Very low growing, and bearing flat heads of deep rose blossoms all through the late summer.

Bumaldi. The ever blooming Spirea. Dwarf and compact in habit; leaves are bright green, with variegations of yellow; flowers deep pink. Blooms throughout the Summer and Autumn. Very desirable shrub.

Callosa alba. Dwarf White Spirea. A valuable, white flowering, dwarf shrub, one to three and one-half feet high, of bushy, symmetrical form, which flowers all summer.

Aurea. (Golden Spirea.) One of the best of our yellow leaved shrubs.

Thunbergii. (Thunberg's Spirea.) April and May. Low-growing, rounded form, delicate, drooping, yellowish green, lanceolate leaves, which take on and retain the most beautiful tints in Autumn. Small abundant white flowers in May. For planting in front of porches it has no rival.

Prunifolia or Bridal Wreath. Pure white double flowers, resembling tiny daisies, which entirely cover the long slender drooping limbs. Flowers in May and remains in bloom for weeks. One of the best and most popular early flowering Spireas 4 to 5 ft. high.

Van Houtteii. June. One of the finest and most satisfactory of all Spireas, either single or among other shrubs. It forms a round, graceful bush with arching branches, which in June are set from tip to tip with beautiful white blossoms. A shrub which cannot be over praised

SYRINGA (Mock Orange)

Syringa, Common. Large white flowers. Very hardy.

Each, 75 cents; dozen, \$7.00.

Syringa, Golden. Large, deep yellow leaves; white flowers; bush hardy.
Each, \$1.00; dozen, \$10.00.

SAMBUCUS or Elder

Aurea. (Golden Elder.) A large, golden-leaved bush. Thrives best in sunny places. One of the best of yellow shrubs. Each, 75 cents; dozen, \$7.00

TAMARIX

Hardy shrub, with very graceful and handsome feathery foliage. The plant flowers so freely that in the early summer it is one mass of pink bloom, completely hiding the foliage 12 to 15 ft. Each, 75 cents; dozen, \$7.00.

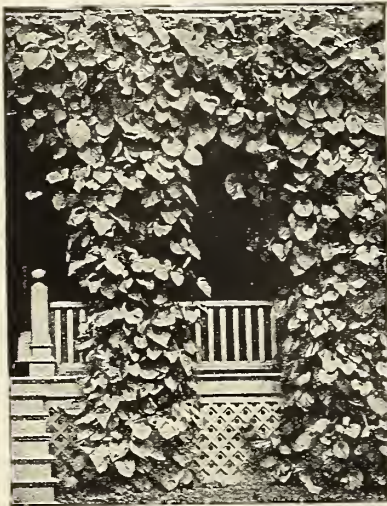
WEIGELA, Diervilla

Candida. This is the very best of all the white flowering Weigelas. A strong, upright, erect grower; flowers pure white, and produced in great profusion. Commences to bloom in June, 3 ft. Each, 75 cts.; doz, \$7.00.

Eva Rathke. A charming new variety; flowers a beautiful, distinct, clear shade of crimson. Blooms twice each season. 3 ft. Ea, \$1.00; doz, \$10.00.

Rosea. A hardy and beautiful shrub, bearing in May a profusion of rose-colored flowers. Will grow in shade. Each, 75 cents; dozen, \$7.00.

Variegated. Leaves variegated, green, yellow and pink. Flowers delicate rose and pink. A charming shrub. Each, 75 cents; dozen, \$7.00



DUTCHMAN'S PIPE

The Spireas are the best known and most popular of all flowering shrubs. The best varieties are listed above

AMPELOPSIS

Veitchii. Japanese or Boston Ivy. This hardy variety clings firmly to the side of a house or wall, and will soon form a perfect mass of foliage. The leaves overlap with wonderful regularity. In autumn this handsome climber manifests its greatest beauty, becoming a glowing mass of the brightest shades of crimson, scarlet and orange.

Strong vines, each, 75 cents; dozen, \$7.00.

Quinquefolia, American Ivy or Virginia Creeper. A native climber of vigorous growth; a fine green in summer changing to rich crimson in fall. It affords shade quickly; desirable for covering walls, verandas or trunks of trees.
Strong vines, each, 75 cents; dozen, \$7.00

CLEMATIS

Henryii. Single; the finest white Clematis; very large, fine flowers; grows rapidly; blooms freely during summer and autumn. Ea, \$1.00; doz, \$10.00.

Jackmani. Flowers large, intense violet-purple; produced in great profusion, blossoms from four to six inches in diameter. The most beautiful hardy climber in cultivation. Each, \$1.00; dozen, \$10.00.

Madame Edouard Andre. A valuable variety; distinct color; of fine bright crimson, with no purplish shade about it. Large flowers, borne so profusely that it is called Crimson Jackmani. Each, \$1.00; dozen, \$10.00.

Paniculata. A remarkably beautiful climbing plant. Flowers pure white, star-shaped, about one inch in diameter, borne very freely in large clusters; will last several days as cut flowers, retaining their freshness and fragrance. The plant is a strong, quick grower. One of the most desirable and useful of climbing plants.
Each, 1.00; dozen, \$10.00.

AKEBIA QUINATA

A hardy, strong growing, Japanese climbing plant, with curious purplish flowers, ornamental berries and handsome compound leaves, composed of five leaflets. An interesting plant. Each, 75 cents; doz., \$7.00.

ENGLISH IVY

Extensively used for window boxes and vases in the summer. For outdoor display in window boxes at hotels and private residences its value is widely recognized. A good climbing plant for the house. Ea, 50 cts; doz., \$5.00.

HONEYSUCKLE

Hall's Japan. A vigorous rapid growing nearly evergreen climber, native of Japan. Leaves are dark green and produce a dense covering. Flowers are white changing to yellow, deliciously fragrant, borne in great profusion in summer and sometimes in Autumn. Each, 75 cents.

TRUMPET VINE

Tecoma radicans. A fine, hardy, climbing plant, producing clusters of large, trumpet-shaped, orange-scarlet flowers about three inches long. The foliage also is very beautiful. If the tops are kept cut back it makes a beautiful bush for the lawn.

Each, 75 cents; doz., \$7.00

CINNAMON VINE

A very rapid climber of incomparable beauty, with flowers of exquisite perfume. The growth is very rapid and the vines cover a large space in a short time. It is grown from a tuber, is perfectly hardy and will live out of doors without protection. The vine dies to the ground each fall, and starts growth early in the spring.

Tubers, Each, 25 cts.; dozen, \$2.50.

DUTCHMAN'S PIPE

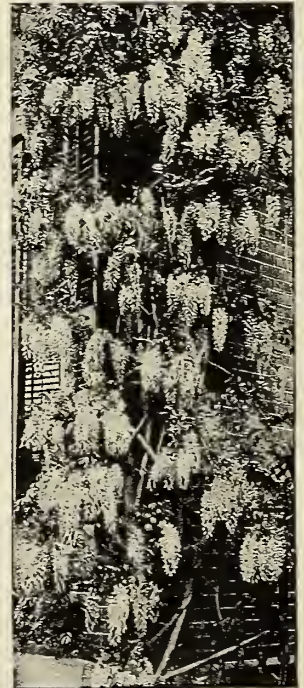
Aristolochia Siphon. A very handsome rapid-growing hardy climber attaining a height of 30 feet or more. The picture to the left clearly shows the large attractive overlapping foliage.
Each 75 cents; doz., \$7.00.

WISTARIA Chinese Purple

Wistaria is a strong, rapid grower, desirable for trellises, porches, etc. When well established it blooms profusely. The light purple flowers are very showy, and are produced in long racemes. A large plant in bloom is a beautiful sight. Perfectly hardy. Strong Roots, each, 75 cts doz \$7.00.

*Jacksonville, Ills., April 16, 1923,
I received the 300 plants of California Privet which you sent me last week. They are fine plants and were received in excellent condition.
John W. Clary.*

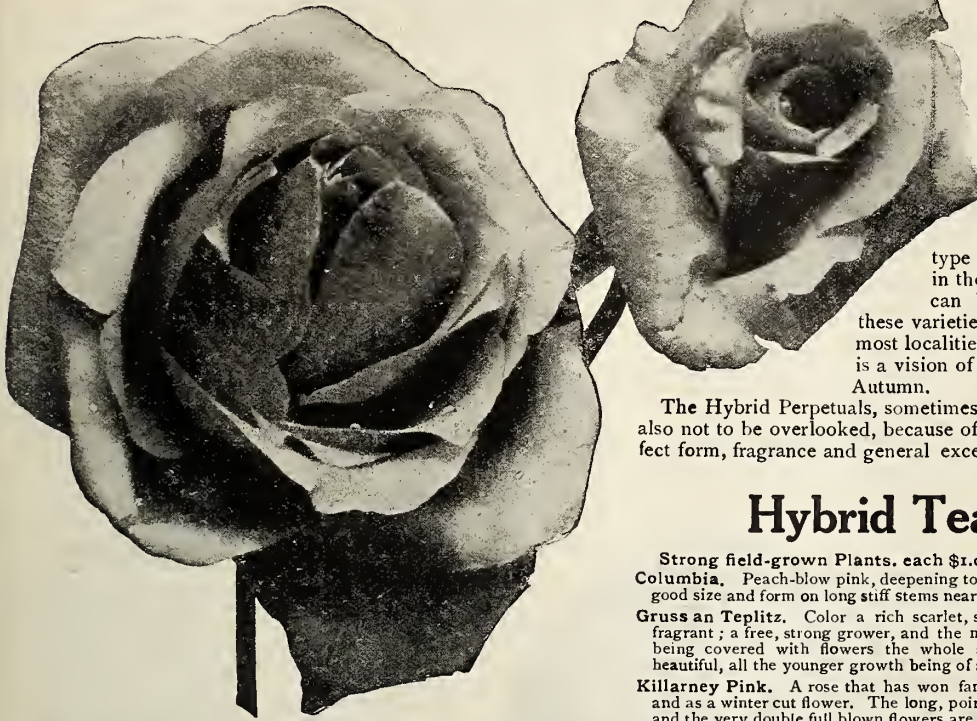
*Lowell, Mich., April 20, 1923
Thank you for the fine shape those Spirea and Hydrangea shrubs came to me.
Mrs. W. F. Smith*



WISTARIA

VICK'S HARDY

ROSES



Of the many hundreds of varieties of roses, we have selected the following as being preeminently the best short list that can be secured in their various colors. Every one of the varieties we here show has distinctive and conspicuous merit. We cannot recommend too highly the Hybrid Tea Roses which are shown here. This type probably surpasses all others in the rich and varied colors that can be secured. Nearly all of these varieties are now hardy enough for most localities. A garden of Hybrid Teas is a vision of beauty from May until late Autumn.

The Hybrid Perpetuals, sometimes called the June Roses, are also not to be overlooked, because of their extreme hardiness, perfect form, fragrance and general excellence.

Hybrid Tea Roses

- Strong field-grown Plants, each \$1.00; dozen, \$10.00. Postpaid.**
- Columbia.** Peach-blow pink, deepening to a glowing rose pink. Flowers of good size and form on long stiff stems nearly thornless. Exquisitely fragrant.
- Gross an Teplitz.** Color a rich scarlet, shading to velvety crimson; very fragrant; a free, strong grower, and the most profuse bloomer known to us, being covered with flowers the whole season. The foliage is extremely beautiful, all the younger growth being of a bronzy plum color.
- Killarney Pink.** A rose that has won fame both as a hardy garden variety and as a winter cut flower. The long, pointed, sparkling, brilliant pink buds, and the very double full blown flowers are very handsome. A free flowering, hardy, strong growing variety, and one of the best that can be planted.
- Madame Eugene Marlett.** Bright carmine red with scarlet tones that do not fade in the hottest weather. Very hardy and fragrant.
- Mrs. Wakefield Christie-Miller.** Soft pearly blush, shaded salmon. Flowers are large and remain perfect on the bush for a long time. Extra good for bedding and massing.
- Ophelia.** Words can give one only a faint idea of the superb beauty of this Rose; color is a delicate shade of salmon-pink shaded with rose; buds are unusually attractive which open full and double; blooms profusely all summer.
- Radiance.** A glorious new extra hardy rose of remarkable beauty and vigor. Brilliant carmine pink, with yellow shadings base of petals.
- White Killarney.** A beautiful white rose of the same type and shape as the famous Pink Killarney; the long full buds are handsome and the open flower is most refined and beautiful in form and texture.

CAROLINE MARNIESSE

A Hardy Rose. Unequaled for Cemetery Planting

The flowers are creamy white, medium size, very double and sweetly scented. There is not a week from late in May till the middle or latter part of October that large quantities of blossoms cannot be picked from these plants. Growth low and somewhat spreading, making it especially valuable for the borders of beds and for massing. Each, \$1.00; dozen, \$9.00.

Hardy Hybrid Perpetuals

Strong Field-Grown Plants, each, \$1.00; dozen, \$10.00.

By parcel post or Express prepaid.

- Anna De Diesbach.** (Glory of Paris) Lovely shell pink; long pointed buds. Vigorous grower and free bloomer.
- Frau Karl Druschki.** (White American Beauty or Snow Queen.) Snow white flowers, extremely large and beautifully formed. Very hardy, vigorous and prolific bloomer. Very popular.
- J. B. Clark.** Intense deep scarlet. Large flowers; fine bloomer; strong vigorous grower.
- Prince Camille de Rohan.** Rich, dark velvety crimson shading to maroon; very double and very fragrant.
- Captain Hayward.** Bright, rich, glowing scarlet. Very large. One of the best Hybrid Perpetuals in this class.
- Eugene Furst.** Deep crimson, purple shadings. Profuse bloomer. A charming, superb flower.
- Paul Neyron.** A rose of immense size. One of the largest in existence. Deep rose in color. It has very attractive foliage. Very vigorous and hardy.
- Gen. Jacqueminot.** Rich crimson-scarlet, very bright and velvety. It produces beautiful buds that are much admired, and in great demand.

Pot Plants for House Culture

Hardy Everblooming Roses

One year green plants, with foliage, ready to bud. Hardy enough to do well in the garden if set out after cold weather.

Each, 35 cents; doz., \$3.50

- Gross an Teplitz.** Color rich scarlet; very fragrant.
- Maman Cochet.** Rich pink, changing to silvery rose.
- Mons. R. Arnand.** Deep pink, beautifully tinted; finely formed.
- Ophelia.** Salmon-flesh, shaded with rose.
- Sunburst.** Orange copper or golden yellow strong grower.
- White Cochet.** Beautiful snowy white.
- White Killarney.** Soft, pure white; very popular.

Large dividends of flowery delight may be obtained from a small investment in Vick's Hardy Everblooming Roses

Tender Everblooming Tea Roses

One year green plants ready to bud. These roses are tender and must be grown indoors except in warm climates, where they may be planted and will do well out-of-doors.

Each, 35 cents doz., \$3.50

- Lady Hillingdon.** Golden yellow; long, pointed buds.
- Madame Camille.** Rosy flesh color; very large
- Madison.** Creamy white, large flowers.
- Mrs. Ben. R. Cant.** Clear, bright rose-red; all season.
- Perle des Jardins.** Deep yellow; very popular.
- Sunrise.** Orange and copper, scarlet and yellow; very beautiful.

Vick's Hardy Climbing Roses

For Outdoor and Indoor Planting.

Hardy Climbing Roses can be used to such great advantage in so many ways that they are always very popular. They may be trained over porches, trellises, arbors or fences, or be grown as individual plants, and they soon form beautiful bushes more ornamental than many shrubs. They may be trimmed to any shape or height desired.

Dorothy Perkins. In foliage, growth, and habit of blooming it is remarkably like the Crimson Rambler, but the flowers are more double and of a beautiful shell-pink color, and hold a long time without fading. The flowers are also sweetly scented, a characteristic not possessed by most Roses of the Rambler family.

Strong, two-year plants, each \$1.00; dozen, \$9.00.

Red Dorothy Perkins. This is a recent introduction and the acclaim with which it has been received assures it a foremost place among the Hardy Climbing Roses. The flowers are large and double and are produced very freely. The color, which is an intense, clear crimson-maroon with tips of petals tinged scarlet, remains bright and unfaded throughout the blooming period.

Strong, two-year plants, each \$1.00; dozen, \$9.00.

White Dorothy Perkins. This addition to this famous family will be welcomed by all flower lovers. Similar in habit to the others of its class but with pure white flowers.

Strong two-year plants, each \$1.00; dozen, \$9.00

The Philadelphia Rambler. A cross between the popular Crimson Rambler and the fiery crimson Hybrid Perpetual Victor Hugo, and identical with the Crimson Rambler except that the color is brighter crimson, and never fades; a valuable acquisition to the climbing roses.

Strong, two-year plants, each \$1.00; dozen, \$9.00.

Lady Gay, Rose of the highest merit. Resembles Crimson Rambler in habit and general effect. The flowers are of a delicate cherry pink color, fading to soft white, of good size and delicately perfumed.

Strong, two-year plants, each, \$1.00; dozen, \$9.00.

Climbing American Beauty. This is known as the best hardy climbing rose in the large-flowering class. The flower is as large, as beautiful, and as double as the American Beauty, which is so well known as one of the most attractive roses, that it does not need a description.

Strong, two-year plants, each \$1.00; dozen, \$9.00.

Tausendschon—Thousand Beauties. Tausendschon well deserves its name, "The Rose of a Thousand Beauties." Its free flowering qualities and beautiful white and delicate pink blossoms make it a favorite. It is grown in large quantities for winter forcing. The flowers are borne in large clusters from June to August. Each flower measures about one and a half inches in diameter, and is of a beautiful soft rose color, changing to rosy-carmine; The strong, vigorous bardy plants and attractive foliage are bigly resistant to disease and insects.

Strong, two-year plants, each, \$1.00; dozen, \$9.00.

The Rambler Roses

Strong, two-year plants, each, \$1.00; dozen, \$8.00.

Crimson Rambler. The Old Favorite Rambler Rose. Bright crimson flowers in great clusters.

White Rambler. Another favorite growing like Crimson Rambler, with white flowers in great clusters.

Pink Rambler. Beautiful pink clusters of flowers in great profusion.

Yellow Rambler. Deep golden-yellow flowers in large clusters, covering the entire bush.

The Above Rambler Collection—One Plant of Each Color—
The Four Plants \$3.50.

Dwarf Rambler Roses

Splendid for either out of door growing or for pot plants.

Strong, field grown plants, each 75 cents; dozen, \$8.00.

Crimson Baby Rambler. A Dwarf Rose that blooms from early June to December. This beautiful rose produces clusters of flowers as large as the old Crimson Rambler. The color is a charming brilliant red, and it blooms with great profusion. As a pot rose it has few equals, as it blooms continuously.

White Baby Rambler. This rose is a little beauty, with pure white double flowers. A constant bloomer, and as grand a bedder as the Crimson Baby Rambler.

Baby Dorothy. Clear pink. A dwarf form of the climbing rose, Dorothy Perkins, which it resembles in foliage and color of flower. The flowers are produced in large clusters.

Baby Tausendschon. Dwarf form of the climber of the same name. Truly a "Rose of a Thousand Beauties." A mass of lovely pink and white blossoms all summer.

Vick's Moss Roses

The peculiarities of the Moss Roses are the delicate prickles which crowd their stems, and the beautiful mossy covering of their opening buds. They are strong, vigorous growers, and are perfectly hardy.

Each, \$1.00; dozen, \$9.00.

Henri Martin. A magnificent Moss Rose. Extra large and perfectly double. Color a deep rosy carmine, shaded a bright crimson.

Madam de la Rochlambert. Bright pink.

Princess Adelaide. Pale rose; good in bud and flower; foliage dark.

White Bath. Pure white. Best of the white Moss Roses.

HOW TO PLANT ROSES IN THE FALL

The autumn season, commencing with about the first of October, is especially favorable for transplanting the hardy roses. The plants should be dormant; that is, the growth should be finished and the plants have dropped their leaves, or at least the leaves should have been removed from the hard and ripened wood. In this condition there can be no drooping of the plants, all wounds tend to callous and heal over quickly, and the plants are ready to make some new roots before cold weather sets in.

In setting the plants remove with a sharp knife any portions of injured roots, leaving a smooth cut surface. Be sure and plant in deep-spaded, mellow, and well-enriched soil, where no water will lie. After planting draw some soil up into a mound around each plant and then cover the ground with a good thickness of stable litter, leaves or evergreen boughs. Thus planted they are ready to start off into new growth at the earliest opportunity in the spring. Early in the spring the tops should be cut back sharply, leaving only some six or eight inches of stems.

Would like to mention an American Beauty Climbing Rose purchased from you. Have never seen such a strong grower and profuse bloomer. This is its third summer and it had over a thousand blooms. It was literally covered and the flowers were very large.
Detroit, Mich., July 24, 1923 Mrs. W. S. Crowl



Too much cannot be said in favor of the climbing American Beauty.

It is giving complete satisfaction wherever planted

VICK'S FRUIT TREES

By Express or Freight not Prepaid. Fruit trees are too heavy for parcel post.

The satisfaction of eating handsome, sparkling fruit fresh from one's own garden cannot be measured. Only those who have had this pleasurable experience know their appetizing lusciousness. Many otherwise waste spaces in corners, along fences and terraces can be utilized to provide abundant table delicacies fit for any epicurean banquet.

APPLES

Ohio Beauty. An excellent new winter apple, large, handsome, color yellow or greenish blush striped red. Flesh slightly tinged yellow, crisp, tender, aromatic, juicy.

Ohio Beauty, largest size, XXX 5 to 7 ft., each, \$1.25.
Each Ten

All other varieties;
Largest Size XXX 5 to 7 ft. \$1 10 \$10 00

SUMMER APPLES

Red Astrachan. Well-known red summer apple, in great demand.

Sweet Bough. A favorite everywhere. Everyone should own a tree of this variety.

Yellow Transparent. Earliest of all. Large, tender, juicy; big crop every year.

FALL APPLES

Duchess of Oldenburg. A fine apple; yellow skin striped with red. Crisp, tender and juicy.

Fall Pippin. Large, yellow; tender, juicy and rich.

Fameuse. (Snow Apple.) Red skin, white flesh; very tender.

Gravenstein. Tender flesh; very attractive.

Maiden's Blush. Old time favorite.

APPLE TREE BEARS FRUIT FIRST SEASON



Sept. 28, 1920.
Enclosed find photograph of the dwarf transparent apple tree, purchased of you last spring with two dandy apples on and description of same. Pretty good for so young a tree.
J. W. Bond
Shelton, Conn.

Tree set out, Shelton, Conn. by J. W. Bond (82 years of age) in Spring of 1920.

Height of tree 4 feet.

Bore 2 apples weighing 1/2 lb each.

Circumference of each apple 10 inches.

Yellow Transparent Apples.

Ripe Aug. 1920

WINTER APPLES

Baldwin. Most popular variety planted. Delicious. The great National Dessert Apple. Flesh tender; very juicy. Apple large, striped red.

Golden Russet. Very hardy Russet apple.

Rhode Island Greening. Best green apple. Fine for cooking.

Jonathan. Large, brilliant red. Good keeper. A great apple for the home garden.

McIntosh Red. Best red winter apple; tender, juicy, crisp.

King. Large red; fine bearer. Hardy.

Northern Spy. A great eating apple. Known the world over.

Rome Beauty. A very handsome red striped apple of good quality. A good keeper.

Talman Sweet. Best sweet. Light yellow with blush of red.

Winter Banana. An apple with a banana flavor. Fine looking.

DWARF APPLES

Fine for the Town or City Lot where there is limited space in which to grow fruit.

Extra Large Trees, \$1.10 each; ten for \$10.00.

Dwarf Trees in These Varieties: Baldwin, Crimson Beauty Northern Spy, McIntosh Red, Snow Apple, R. I. Greening Duchess, Wealthy, Winter Banana.

CRAB APPLES

	Each	Ten
XXX Grade, Largest Size	\$1 10	\$10 00

Hyslop. Dark red. Transcendent. Yellow, red cheek

APRICOTS

\$1.50 each; ten for \$12.50.

Early Golden. Small, juicy, sweet. Tree very hardy and a good bearer. July.

Moorpark. Largest of all. A big favorite everywhere. August.

SOUR CHERRY

	Each	Ten
XXX Extra Size	\$1 50	\$12 50

Early Richmond. Dark red cherry, juicy, acid, great cooker, very productive.

Montmorency. Most popular of all cherries. Large, bright shining red, acid flavor.

SWEET CHERRY

	Each	Ten
XXX Extra Size	\$1 75	\$15 00

Black Tartarian. Large, sweet, heart-shaped. Very fine cherry. Bears immense crops. Most popular variety grown.

Napoleon. Best of yellow sweets. Heart-shaped fruit. Very large. Meat tender, juicy, fine flavor. A great canning cherry.

PEARS

	Each	Ten
XXX Extra, 5 to 7 ft.	\$1 75	\$15 00

Anjou (Autumn). Large, handsome, fine flavor, good keeper.

Bartlett. Popular everywhere. Large, yellow pear. September.

Clapp's Favorite. (Summer) Large, early pear. Hardy and productive. August.

Duchess (Autumn). Large light green and russet. Good flavor

Flemish Beauty (Autumn). Beautiful, sweet pear, hardy.

Seckel (Autumn). A great home garden variety. Small fruit, juicy, melting tender. Fine for preserving and pickling.

DWARF PEARS

Dwarf Pears are popular where space is limited. Fruit is same size as on standard trees.

Prices on Dwarf Pear Trees	Each	Ten
XXX 3 to 4 ft.	\$1 75	\$15 00

We recommend the following varieties:

- | | | | |
|----------|----------|-------|--------|
| Dutchess | Bartlett | Anjou | Seckel |
|----------|----------|-------|--------|

VERY IMPORTANT NOTICE.

In case of our inability to fill your order for any reason, we will either refund the amount paid or send other items of equal value, as you may direct. We exercise care to have our trees genuine and reliable, and hereby guarantee that if all or practically all, or any part of stock delivered does not prove true to name as ordered, we will replace it, free of charge, or refund the money paid for it, that being the full damages for a breach of contract. Our prices are offered subject to the conditions, that we shall not be held liable in any event for an amount in excess of the money received for the stock.

PEACHES

	Each	Ten
XXX Grade, 4 to 5 ft.	\$0 75	\$7 00
Belle of Georgia. Large; flesh white, firm. Freestone. August.		
Carman. Hardy, flesh creamy white, tinted red; Freestone. July.		
Champion. Large red. Sweet and juicy. Freestone. August.		
Chair's Choice. Large, yellow, red cheek. Freestone. October.		
Crawford Early. The home garden peach. Ripens in August.		
Crawford Late. Large, yellow, red cheek. Freestone. September.		
Elberta. Large, yellow, red cheek. Late September. Freestone.		
Fitzgerald. Hardy, large yellow. September. Freestone.		
Niagara. Larger than Elberta. Fine. Freestone. September.		
Yellow St. John. Yellow. Extra fine. Freestone. August.		

Our prices on Small Fruits, and Fruit and Ornamental Trees are based on the actual value of the plants and do not include the cost of transportation. Most shipments of Small Fruits can be forwarded cheapest by Parcel Post. If you prefer that route add an amount sufficient to pay for postage. Otherwise shipment will be made by Express collect.

PLUMS

	Each	Ten
XXX Extra Size	\$1.75	\$16.00
Abundance. (Japan). Large, red, flesh light yellow. Early.		
Bradshaw. Dark violet red, oblong, flesh yellow, juicy.		
Burbank, (Japan). Large, round, red, good bearer, fine quality.		
German Prune. Long oval, purple, thick bloom. Sweet.		
Lombard. Tree will grow anywhere. A red, oblong, large plum. Juicy, sweet and pleasant. Should be in every garden.		

QUINCES

	Each	Ten
XXX Extra Size	\$1.75	\$15.00
Orange. Most popular variety. Large, golden-yellow. Cooks very tender. Fine flavor.		

Shadoken, N. Y., Aug. 23, 1922

The Strawberry plants arrived today and are now in the ground. I want to write to you to tell you how much I appreciate the quality of the plants. They were simply perfect and there wasn't a plant which could be criticised. Thank you.

Anton O. Fischer.

Vick's Small Fruits

RED RASPBERRIES

PRICES—Three for 60 cents; 10 for \$1.25; 100 for \$7.50.

St. Regis Everbearing Raspberry

Ripe Fruit From June to November

Begins to ripen in June and continues to bear fruit until frost. Truly an everbearing Red Raspberry. Berries large, bright crimson, highest quality. Rich and sugary, with a true raspberry flavor. A fine shipper. In size, productiveness and quality St. Regis leads all other reds.

Columbian. A cross between the Cuthbert and Gregg. Hardy even in Wisconsin. A most vigorous grower; canes 10 to 16 feet in length and often over an inch in diameter. Fruit very large; color dark reddish-purple; adheres firmly to the stem; seeds small; has a distinct flavor of its own making it a most delicious table berry. For canning it is much superior to any other. Bears enormous crops.

Cuthbert. The best of all Red Raspberries for market on account of its fine shipping qualities, size, color, and richness of flavor. Very strong grower, vigorous, healthy foliage and very hardy. One of the reliable varieties; can always be depended upon to bear a good crop.

Herbert. A fairly new berry from Canada. Its chief quality is its extreme hardness, being practically proof against diseases of all kinds. Fruit large, bright to deep red, of fine quality and flavor.

A very fine market variety, especially adapted to localities where the winters are very cold. Highly recommended by the Government Experimental Station at Ottawa.

Golden Queen. Best yellow variety. Continues a long time in bearing.

Vick's Black Raspberries

Price—3 for 60 cents; 10 for \$1.25; 100 for \$7.50.

Plum Farmer. This wonderful new Black Raspberry has been thoroughly tested and is a great favorite for home use, and one of the best commercial sorts for all sections. A vigorous grower, hardy and very productive; one of the best to withstand drought. Fruit enormously large, covered with a grayish bloom like the bloom on a grape; matures early, easily picked, ships well, sells at the highest prices.

Cumberland. A mammoth, excellent quality, mid-season blackcap that loads its stock canes with handsome, glossy berries. Extremely hardy.

Gregg. A large, showy blackcap of first quality. A strong grower, hardy and very productive.

Black Diamond. One of the best for home and market. For drying and evaporating it excels all others. The fruit, large and handsome, on account of its size, keeping qualities and productiveness, is one of the most profitable ones to grow.



CUTHBERT—
"Queen of the Market"

Blackberries

Price—3 for \$1.00; 10 for \$2.25; 100 for \$12.00.

Blowers. The giant of all Blackberries. An upright, mammoth grower; is very hardy and productive. Fruit jet black, of fine quality; a good shipper. Commences to ripen in July and bears fruit about two months.

Eldorado. A berry you can depend upon every time. The vines are very vigorous and extra hardy. Berries are large, black, and borne in big clusters.

Rathbun. Fruit black, luscious, of the highest quality, with a high polish and sufficiently firm to carry well. Berries will measure from 1½ to 1¾ inches in length. Flesh juicy, high flavored, without any hard core, sweet and delicious. Unsurpassed for the table or canning. Hardy, having stood 15 to 18 degrees below zero without harm; vigorous, great bearer.

NEW METHOD STRAWBERRY PLANTS

THE BEST FOR FALL PLANTING

If you would enjoy luscious, full flavored strawberries picked fresh from your own garden next spring, start your bed now with our **New Method** plants. This **New Method** of developing strong, vigorous strawberry plants, just recently perfected, builds up their root and crown systems so that the plants with stand the shock of shipment and transplanting without loss and enables the plants to become quickly established and store up plant food necessary to produce great crops of berries. These **New Method** plants are far superior to the ordinary runner or layer plants and produce better results than the high priced pot plants usually offered for fall planting. Set them out any time when the ground is not actually frozen. Any of the following varieties postpaid to your door,

12 plants, \$1.00; 50 plants, \$3.00; 100 plants, \$5.00.

THREE VALUABLE NEW VARIETIES

Here are three new varieties of unusual merit which were originated and developed by the New York Fruit Testing Association. These supplement each other very well being early, midseason and late kinds and in our judgment are very distinct improvements over any other June bearing varieties we know.

Beacon. (Perf.) Very early, berries are dark, glossy red, flesh red to center, juicy but firm, subacid, delicious, the best early variety we know of.

Boquet. (Perf.) Mid-season, extra large berries, glossy red, richly juicy, very firm, prodigiously productive.

Bliss. (Perf.) Late, claimed to be the finest berry in existence, very large, medium red, very glossy, juicy but firm, sprightly sweet, highly flavored.

STANDARD JUNE BEARING VARIETIES

Brandywine. A large, broad, heart-shaped berry, delicious. Medium red color, flesh is firm. Will thrive on most any kind of soil. Midseason. (Perf.)

Bubach. Among the leaders of old standard varieties. Fruit large and handsome, conical, bright scarlet moderately firm, rich in flavor. Succeeds on light or heavy soil. Desirable for home use and market. Season early to medium. A great berry, bringing fine prices on the market. (Imp.)

Gandy. A large, late berry, heavy yielder, strong grower. Fruit very firm, and of good quality. On the market brings fine price. Late (Perf.)

Glen Mary. A fancy market variety. Meat is rich firm, juicy and of high flavor. Big, dark red berry. Midseason. (Perf.)

Premier. A new early variety of exceptional merit, vigorous, enormously productive, commencing early and continuing to bear through a long season. Fruit is attractive rich red of delicious quality, firm enough to ship well. (Perf.)

Senator Dunlap. Very hardy and productive. Berries good size, bright glossy red, good quality. Ripens early and bears fruit for a long period. Early Midseason. (Perf.)

William Belt. Well known. High quality, juicy, sweet, large, bright crimson berry. Ripens all over, no green tips. (Perf.)

EVEBEARING VARIETIES

Progressive—Everbearing. This is the leading everbearing variety, producing good sized berries from May until November. The fruit is of fine quality, highly colored, deliciously flavored, and red to the core. (Perf.)

Superb. Considerably larger than Progressive, very hardy and a frost resister. Truly superb in quality. (Perf.)

For best results in starting a Strawberry bed use our New Method Plants sure to grow and produce abundantly.



HERE IS REAL EVIDENCE

The picture above, taken this summer, shows a field of strawberries set out last October with one-half New Method plants and half ordinary layer plants, all of one variety, set in alternate rows. You can see the striking difference in results now. The New Method are a perfect stand, developed rapidly, and bore a good crop of fruit this season and look as if they had been established for years. The layer plants are just beginning to make a good showing now.

LAYER OR RUNNER PLANTS

Ready for Shipment after about October 1st.

We offer these layer plants for those who want them, but frankly we believe, for fall planting, New Method plants are more economical, when results are considered. Only the following varieties at these prices.

Standard June Bearing Varieties. Brandywine, Bubach, Gandy, Glen Mary, Premier, Senator Dunlap, Wm. Belt.
25 for 65 cts.; 100 for \$2.00, postpaid. By express collect,
500 for \$7.00; 1,000 for \$12.00.

Everbearing Varieties. Progressive or Superb.
25 for \$1.00; 100 for \$3.00, postpaid. By express collect,
500 for \$9.50; 1,000 for \$18.00.

Vick's Grape Vines

Strong 2 year old vines—all varieties, 50 cents each; 10 for \$4.00.

Campbell's Early. Strong, hardy vine; healthy, mildew-resisting foliage; bearing abundantly. Berries large, black, with light purple bloom. Flavor rich, sweet, slightly vinous. Very early.

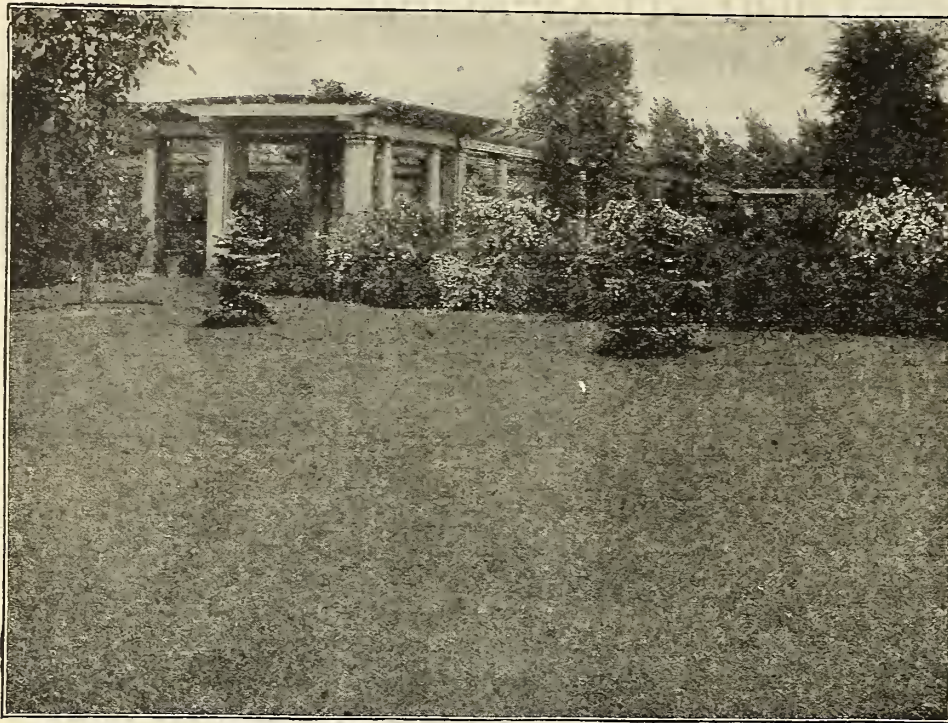
Niagara (White). Bunch very large and handsome, berries large, round; skin thin, tough, carries well; melting sweet. Should be in every garden.

Brighton. A large, delicious, sweet, red grape; flesh sweet, tender and very juicy; vine thrifty and a strong grower. Best of all large red grapes. First of September.

Concord (Black). Bunch large, berries large, covered with a rich bloom; sufficiently firm to carry well to distant markets; flesh juicy, sweet, tender; a strong grower, very hardy, healthy and productive.

Delaware. Bunches small and compact; berries small, round, thin skinned, light red. Flesh very juicy, with an exceedingly sweet and delicious flavor. Very hardy and productive.

Worden. Said to be a seedling of the Concord. Bunch large, compact, handsome; berries larger than those of the Concord. Superior to it in flavor, and ripens a few days earlier. Destined to become very popular for the vineyard and garden.



Vick's Grass Seed MIXTURES

The Fall season with its usual long stretches of cool, wet weather is especially favorable for the growth of lawn grass if it is sown early. Sow seed now and get a stand of grass this fall which will start fresh and green at the first breath of Spring. Good lawn results can be obtained only by the use of mixtures of several grasses, because the different varieties are at their best at different times during the spring, summer and fall. Our grass mixtures are made up with special care and only seed of the highest quality is used. Over seventy years experience has taught us just what to use for different purposes.

VICK'S EXPOSITION PARK

This mixture is composed of low-growing, fine-leaved, tough and hardy grass that will stand unusual wear and tear. It makes a good-looking, thick, firm turf especially prepared for tennis courts, croquet grounds, parks, cemeteries, etc.

½ lb., 35 cents; pound, 55 cents, prepaid.
Not prepaid, 5 lbs., \$2.25; 14 lbs., \$5.50.

VICK'S SHADY SPOT

A mixture prepared especially for places where there is so much shade that ordinary grasses do not succeed.

½ lb., 25 cents; pound, 45 cents, prepaid.
Not prepaid 5 lbs., \$1.90; 10 lbs., \$3.60; 20 lbs., \$6.75.

VICK'S VELVET LAWN

This has been our standard mixture for many years. It contains the right kind of grasses in correct proportions to produce a thick sod of rich green throughout the entire season for nearly all situations. We use only the highest grades of seed as free as possible from impurities chaff and weeds and will go much farther than the ordinary cheap mixtures that are offered.

½ lb., 25 cents; pound, 45 cents, prepaid.
Not prepaid 5 lbs., \$1.85; 10 lbs., \$3.50; 20 lbs., \$6.50.

Montrose, Colo.,

Several people told us that we could not get a lawn here in one year, but my lawn is one of the prettiest in Montrose in only three months time. We secured the seed from you this Spring.

Mrs. Robt. Innes.

VICK'S QUALITY FARM SEEDS

The prices of all Farm and Grass Seeds listed below are F. O. B. Rochester and are of course subject to market changes. 2 1-2 bushel bags 40 cents each extra. Bags for one peck 15 cents each.

Alfalfa. The very best Northwestern grown seed of highest purity and germination. Pound, 35 cts.; 10 lbs., \$3.00; 30 lbs., \$7.50; 60 lbs., (1 bu.) \$14.25.

Winter Wheat Rochester No. 6. The standard white winter wheat for this section. Our special strain has been selected with great care.

Per bushel. \$2.00; 10 bu., or over, \$1.75 per bu.

Winter Rye (Rosen Rye) By far the best winter rye yet developed. It outyields all other kinds and takes less from the soil. 15 lbs., 75 cts.; bushel, (56 lbs.) \$1.75.

Hairy or Winter Vetch. Valuable in the north especially as a cover crop. Often used with Rye which furnishes a support for the trailing vines of Vetch.

5 lbs, \$1.40; 10 lbs., \$2.50; 25 lbs. or over 22 cts., per lb.

The Lawn Grass Mixtures above are made up of only clean high grade seed sure to give best results possible.

CLOVERS AND GRASSES

	Per lb.	Per bu.
'VICK'S KING BRAND" RED CLOVER, extra fancy, bright colored plump seed, superior to average stocks offered.	lb. 60	\$13 50
ALSIKE OR SWEDISH CLOVER. (<i>Trifolium hybridum</i>) Surpasses all other clovers for rich moist soils. 8 lbs per acre.	12	00
WHITE CLOVER. (<i>Trifolium repens</i> .) Valuable in lawn grass mixtures and indispensable in pasture mixtures.	Per lb 100	85 80 00
SWEET OR BOKHARA CLOVER. White blossom, (<i>Melilotus alba</i>) Valuable perennial for soil fertilizer.	20	16 00
Kentucky Blue Grass. (<i>Poa pratensis</i>) Invaluable for lawn; unexcelled as a pasture grass.	35	32 00
Orchard Grass. (<i>Dictalis glomerata</i> .) One of the best pasture grasses. Exceedingly palatable to stock; will endure a great deal of cropping. Twenty to thirty pounds per acre.	25	28 00
Perennial Rye Grass. (<i>Lolium perenne</i> .) Valuable for pasture and lawn grass mixtures. 20 to 30 pounds per acre.	20	19 00
TIMOTHY. Leading variety for hay crop; bright, plump, stock high purity and germination test. 10 to 12 pounds per acre. Per bushel, (45 pounds) \$4.50.	10	00

FERTILIZERS

Unless otherwise stated, prices on this page are f. o. b. Rochester, i. e., the express or freight charges to be paid by customers

PULVERIZED SHEEP MANURE. The best fertilizer for the lawn, garden, greenhouse and conservatory. It is a dry, inoffensive, pure animal fertilizer finely ground in the most convenient form for any purpose. As a top dressing for the lawn it is very effective without any unsightly appearance or offensive odor. It may safely be used for any purpose as it contains no acid or chemicals to burn tender roots or sprouting seeds. We use it in large quantities in our greenhouses, and find it excellent for potting soil. It furnishes plant food in available, natural form, and its effect lasts a long time.
5 lbs., 40 cents; 25 lbs., \$1.25; 50 lbs., \$2.00; 100 lbs., \$3.00;
500 lbs., \$12.50; 1,000 lbs., \$21.00; 1 ton, \$40.00.

Pure Raw Bone Meal. The very best fertilizer for use in potting soil for flowering bulbs. Finely ground. It decomposes more rapidly in the soil than the coarser grades, and is therefore more quickly beneficial. Bone Meal forms an excellent permanent improvement and is less likely to waste than other fertilizers. It is safe and there is no danger of burning the plants or bulbs. 1 lb. postpaid, 25 cts; charges not prepaid, 5 lbs., 35 cts; 10 lbs., 60 cts.; 25 lbs., \$1.25; 50 lbs., \$2.25; 100 lbs., \$4.25;

Wood Ashes. One of the best fertilizers. It drives away insects and improves the texture of the soil. Per 100 lbs., \$2.75; ton, \$35.00.

STIMUPLANT Makes a WONDER GARDEN

Stim-U-Plant is a highly concentrated, immediately available plant food in convenient tablet form. It is odorless, clean and wonderfully effective for stimulating plant growth either out-of-doors or in pots. Simply insert tablets in soil or dissolve in water to use instead of liquid manure. 30 tablets 25 cents; 100 tablets 75 cts.; postage paid. 1,000 tablets \$3.50., not prepaid.

White Rose Plant Food. An excellent high grade complete fertilizer for flowers, lawns and gardens in convenient powder form, easily applied.
1 pound cans, 25 cents; 5 pound cans, 75 cents; 10 pound cans, \$1.25,
25 pound bags, \$2.50; 50 pound bags \$4.00; 100 pound bags \$6.50.
By express or freight collect. If wanted by mail add postage.

BOOKS FOR THE GARDEN

Postage or Express Charges Prepaid

GARDEN GUIDE. The Amateur Gardener's Handbook. Through-out its pages the veteran gardeners tell the amateur in remarkably simple, easily understood language, how to plan, plant and maintain the home grounds, suburban garden, or city lot; how to grow good vegetables and fruit; how to raise beautiful flowers; how to take care of lawns, porch plants, window boxes, etc. Handsomely illustrated, newly revised, brought right up to the minute. Paper, \$1.10; cloth, \$1.65.

Milady's House Plants. By F. E. Palmer. The care of plants in the house made simple and success assured. About 100 illustrations. Paper 80 cts.; cloth \$1.10.

Peony Manual. By C. S. Harrison. Complete directions for propagation and cultivation. Third Edition, improved and enlarged. 55 cents.

Bulbous Plants for the Garden. Tells how to successfully handle all kinds of bulbous plants, Iris, Gladioli, Dahlias, Cannas, Tulips, Hyacinths, Narcissus, etc. Paper cover. 15 cents.

INSECTICIDES

UNIVERSAL SPRAY. An insecticide and fungicide for every purpose. Apply as a dry powder. Unequaled for the control of all pests on Rose Bushes, Shrubs, Trees, Potatoes, Tomatoes and all vine crops, such as Cucumbers, Melons, etc. Top may be perforated.

By Mail, Postpaid - Trial package, 25 cts.; Large package 50 cts.

Arsenate of Lead, Powdered. Superior to the paste, remaining longer in suspension and having a greater covering capacity; only half the weight needed as of the paste form. It may be used either as a dust diluted with hydrated lime, plaster or road dust, or as a liquid spray with water, lime-sulphur or Bordeaux. ½ lb., 35 cents; 1 lb., 65 cents; 5 lbs., \$2.50 10 lbs., \$4.50.

Black-Leaf 40 (Liquid), A highly concentrated solution of Tobacco. Recommended by Experiment Stations for black Aphis and sucking insects of all kinds. Spraying directions on each package. 1 oz., 35 cents; ½ lb., \$1.25; 2 lbs., \$3.75; 10 lbs., \$15.50.

Lime Sulphur (Powdered) It is now recognized that the most economical sprays are those put up in a powdered form which eliminates paying freight or express on water. One to one and one half pounds of Dry Lime Sulphur will make five gallons of solution of standard strength for dormant spray. Simply follow the directions on the package, adding the required amount of highly concentrated powder to a given number of gallons of water and stir thoroughly.

Lime Sulphur will destroy San Jose Scale, Oyster Shell Bark Louse, Scurfy Scale and other sucking insects, such as Spiders, Lice, Aphids of all kinds, at the same time Fungus spores of Apple Scab, Peach Rot, Leaf Spot, etc., if applied in the fall immediately after the leaves drop, or in the spring before the buds open.
1 lb., 45 cents; 5 lb., \$1.75

Rat Annihilator. A safe and sure method of ridding your premises of Rats and Mice, easy to use, leaves no odor. Rats eat it and immediately leave in search of water. Your losses by Rats are heavy, stop them. Package 15 cts

Scalecide. Used for the destruction of the San Jose Scale. Dilute at the rate of one gallon Scalecide to 20 gallons of water. Quart, 75 cents; gallon, \$2.00; 5 gals. \$7.00.

Slug Shot. Non-poisonous powder for Potato Bugs, Cabbage Lice and Worms, Currant Worms, etc. 1 lb. 30 cents; 5 lbs. 75 cents.

Sulpho-Tobacco Soap. Used as a wash for roses, trees, and house plants. Very effective for insects on animals. 3-oz. cake, 15 cents; 8-oz. cake, 30 cents; postage paid.

Tobacco Dust. 2 lb., drums, 50 cents; not prepaid.


Vick's Excelsior Insect Exterminator. Will destroy Striped Bugs, Cabbage Lice, Green Cabbage Worms, Potato Bugs, Aphids, Squash Bugs, Cockroaches, etc.; \$1.50 per pound, by mail. In lots of five pounds or over \$1.25 per pound by express at expense of the purchaser.

Whale Oil Soap. Used as a wash for roses, trees and plants affected with insects. ½ lb. box, 25 cents; 1 lb. box, 40 cents, postage paid. Special price on large quantities.

Hall's Nicotine Fumigant. A specially prepared compound saturated with pure Nicotine. Lights readily, burns evenly. It costs only 25 cents to fumigate a greenhouse 20 x 100 feet - 1 pound tins, \$1.75 postpaid.



PEONIES AT HIGHLAND PARK — SEE OUR SPLENDID NEW LIST OF PEONIES ON PAGE 23.



BULBS FOR HOME DECORATION AND INSPIRATION
JAMES VICK'S SONS ROCHESTER, N.Y. THE FLOWER CITY