

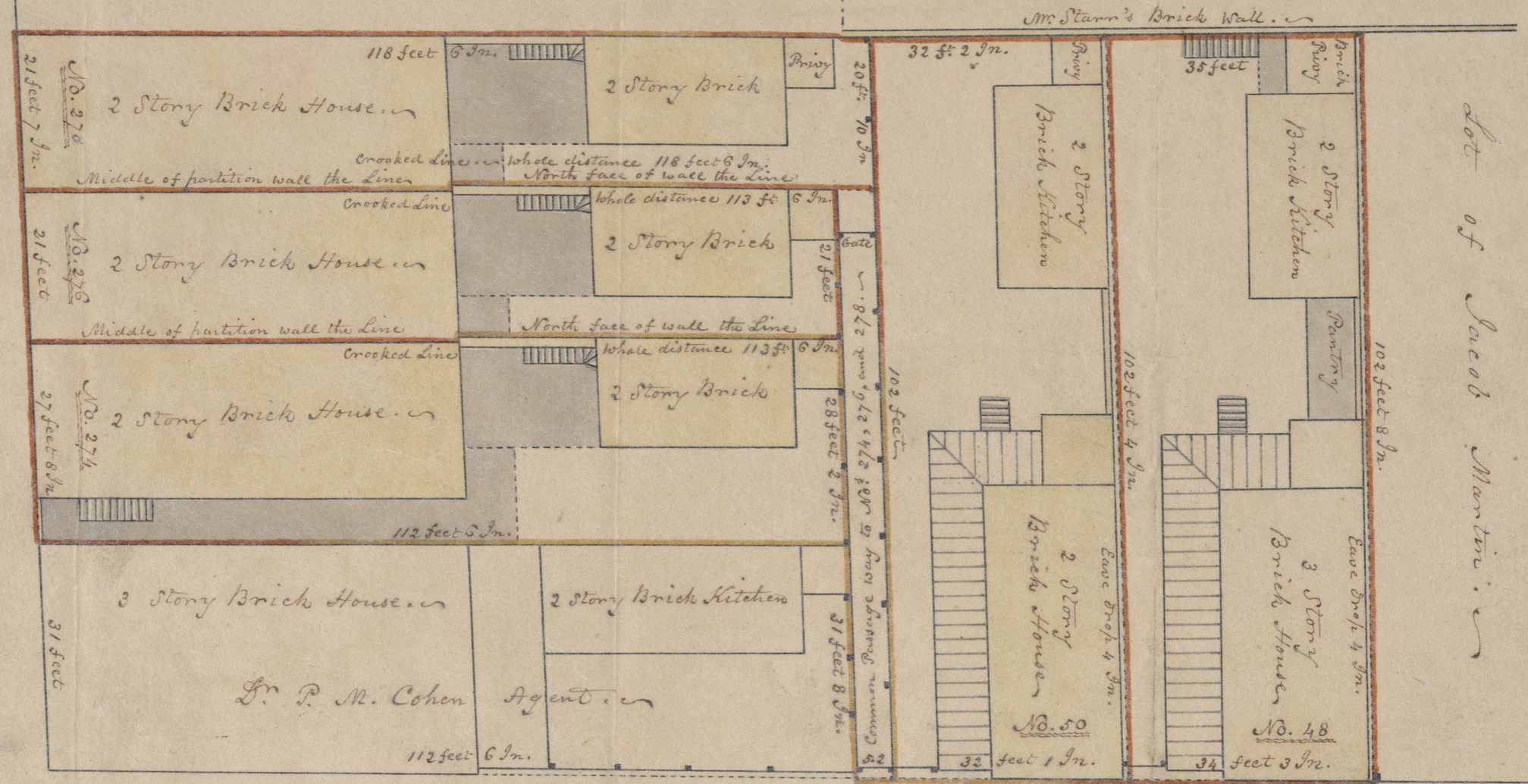


Estate of Rueben Moses decd.

Edwin P. Starn.

Scale of Feet, ten to the half Inch.

King Street



Wentworth Street

Charleston Nov: 7. 1851. At the request of the Exors of the late Mordecai Cohen, I have surveyed the Lots numbered 48, 50, 274, 276, and 278: the boundaries of which are coloured Yellow. Charles Parker
City Surveyor L. H. C.