

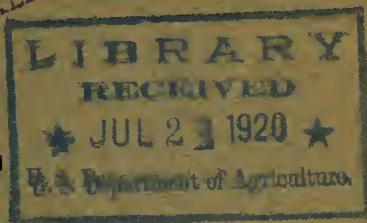
Historic, Archive Document

Do not assume content reflects current scientific knowledge, policies, or practices.

62.67

ball

INDEXED



ANNUAL

PRICE LIST

==== OF ====

Call's Nurseries

1915

S. W. CALL - PERRY, OHIO

THIS IS MY TRAVELING SALESMAN.

A Word with my Customers.

IN again sending out my Annual Price List, I wish to remind my customers that prices herein given are for First-class Stock, the very best that can be grown. If you are looking for cheap stock regardless of quality, do not send your orders here, but if you wish to get the best quality of trees in good condition, and at reasonable prices, I shall be pleased to receive your orders, and I *guarantee satisfaction*. I make a specialty of giving my customers *the best*, and have built up a large and constantly increasing trade by so doing, believing, as I do, that in buying fruit trees "*the best are the cheapest*." My advice to all fruit growers is, never buy a poor tree because someone offers to pay the freight.

To those unacquainted with my nurseries, I wish to say, I make a specialty of *dealing direct with the farmers and planters*. I employ no agents, and send out no traveling salesmen, except this Price List. My trees are all grown here on my premises, under my personal supervision, and no healthier, hardier, thriftier or better stock can be grown. (See certificate of inspection on page 23). Anyone sending us their order can depend on having it filled with the finest selected stock, packed in the best possible manner, and given as much care as could be given it were they here to attend to it themselves.

The expense of packing a small order is nearly as much as large ones, hence I cannot accept an order of less than \$3.00.

Please remember I guarantee satisfaction.

Prices herein given are for stock well packed and delivered to the Railroad or Express Company at this place.

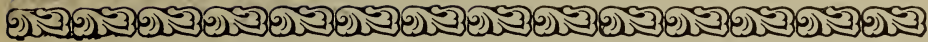
Express rates have been greatly reduced, and I would advise having all *small orders* shipped by express.

EARLY ORDERS.

Please send in your orders early.

Parties ordering largely need not send all of the money with the early orders. If you prefer, you can send enough to secure the order, and the balance any time before the shipment.

Parties not familiar with all the new varieties of fruit who wish my assistance in making their selection of varieties can send the number of early and late varieties, sweet or sour, which they wish, and I will give all such orders my personal attention and furnish the very best varieties grown. In such case if you have a plenty of some varieties at home just state what you have on hand and I will give you a fine assortment of other varieties.



CLUBBING RATES.

Any person ordering Twenty Dollars or more worth of stock may select all stock at 100 rates, regardless of the number taken. If the order is for more than one person, by giving the stock wanted for each one, we will so pack them that each can have his order separate, although all are shipped in one box.

If you need less than Twenty Dollars worth of trees for your own setting, get some of your neighbors to join with you and thus get your stock at the lowest rates.

In Ordering Goods please observe these Terms :

Terms, CASH.

All articles will be labeled true to name; not a single plant shall, intentionally, be otherwise sent out. And while we exercise the greatest care, and give our personal attention to cutting buds and securing our stock from bearing trees, and from the most reliable growers—should any mistake occur, and any trees prove not true to name, we will furnish trees to replace such free of charge, or will refund the money paid for any such trees that may not prove true to name, but will not in any case be held liable for any damage greater than the amount originally paid for such trees.

When money is forwarded with the order the goods are at once secured and unpleasant delays are avoided.

In ordering goods C. O. D., ONE-FOURTH the amount of the bill must accompany the order. And parties ordering C. O. D. must pay express charges for return of money.

First orders will, as far as possible and practicable, be served first.

The articles will be furnished at the prices named; however, 50 will be furnished at the 100 rates.

We usually commence shipping in the Spring, about the first of April, and in the Fall, about October 15th.

My Eighty-page Descriptive Catalogue will be mailed to any address for 10 cents. Anyone sending us an order for stock can have the Descriptive Catalogue mailed to them Free of Charge, by requesting it.

Should you receive more than one copy of this Price List, please hand it to some friend who is interested in fruit culture.

If you have a friend that you think would like one of our Price Lists, send us their address and we will send them one by return mail.

We often receive letters of inquiry in regard to the cost of Freight on Trees, etc. To all such we wish to say, on orders of 100 or more trees it is usually about 1/2 cent per tree, and never as high as two cents per tree. Address all orders to

S. W. CALL, Perry, Ohio.



F
R
U
I
T



T
R
E
E
S

ASTRACHAN

	Each	Per 10	Per 100
APPLE TREES.			
First-class, 2 to 3 years, 5 to 7 feet high.....	\$0 30	\$2 50	\$18 00
“ “ 2 to 3 “ 4 to 5 “	25	2 00	15 00
Varieties—Baldwin, Ben Davis, Wealthy, Mann, Pewaukee, Walbridge, Golden Russet, R. I. Greening, King, Twenty-ounce, Wagner, N. Spy, Grime's Golden, Talman Sweet, Duchess of Oldenburg, Red Astrachan, Early Harvest, Golden Sweet, Pumpkin Sweet, Hubbardson's Nonesuch, Rome Beauty, Rambo, Yellow Bellflower, Gano, Munson Sweet, Ark. Black, N. W. Greening, Paradise Winter Sweet, Western Beauty, Pound Sweet, Sweet-Bough, Aut. Strawberry, Maiden Blush, Famuse, Alexander, Rox Russet, Yellow Transparent, Jonathan, York Imperial, Delicious, Bailey Sweet, Banana, Opalescent, Belmont.	.		
CRAB APPLE.			
First-class, 3 years, 4 to 6 feet.....	30	3 00	30 00
Varieties—Hyslop, Transcendant, Large Red Siberian, Whitney's No. 20.			
PEAR TREES.—STANDARD.			
First-class, 5 to 7 feet high, 2 and 3 years old, very fine.....	40	3 00	30 00
Medium, 4 to 5 feet, 2 and 3 years old.....	25	2 50	25 00
Varieties—Bartlett, Clapp's Favorite, Howell, Flemish, Beauty, Belle Lucrative, Sheldon, Duchess, Lawrence, L. Bond, B. Clairgeau, Wilder's Early, Anjou, Seckel, Lincoln, Vermont Beauty, Kieffer, Rossney, etc.			
DWARF PEARS—3 to 4 feet, leading varieties, 2 years.....	25	2 00	20 00
PEACH TREES.			
First-class, 4 to 5 feet high, 1 year, very fine.....	20	1 50	12 00
Medium, 3 to 4 feet high, 1 year.....	15	1 20	9 00
Varieties—Yellow St. John, Salway, Alexander, Early Crawford, Foster, Late Crawford, Smock, Wheatland, Barnard's Yellow Rareripe, Beer's Smock, Lemon Free, Chair's Choice, Crosby, Champion, Red Cheek Melocton, Kalamazoo, Miller's Cling, Large Early York, Prolific, Carman, Triumph, Elberta, Dewey, Gold Mine, Graves, Cap Ede, Banner, Fitz Gerald.			



GEUII PLUMS.

THE ARCTIC PEACH

Has produced a full crop of large yellow Free Stone Peaches every year since its origin, while some five of those years all other varieties of Peaches have failed in the same section. If you wish Peaches every year, set the Arctic, it is not only the hardiest of all Peaches, but it is the **BEST** of all Hardy Peaches. * * *

THE ARCTIC PEACH.

The Hardest Peach Grown.—Bears full crops where all others fail. It is a large yellow freestone of the finest quality, ripening October 1st. Very prolific and should be thinned in order to secure extra size.

First-class, Arctic, 4 to 5 feet, 1 year.....
 Medium Size, 3 to 4 feet, 1 year

Each	Per 10	Per 100
\$0 25	\$2 50	\$20 00
20	2 60	15 00

PLUM TREES.

Plum on plum roots, first-class, 5 to 7 feet.....
 Plum on plum roots, medium size, 4 to 5 feet.....
 Varieties—Bradshaw, Yellow Egg, Lombard, Imperial Gage, German Prune, Niagara, Geuii, Shipper's Pride, Beauty of Naples, Moore's Arctic, Shropshire Damson, Abundance, Burbank and Wickson.

40	3 00	30 00
30	3 00	25 00

CERRY TREES.

Sweet, 5 to 7 feet high, first-class
 " 4 to 5 " 1 year
 Sour, 4 to 5 " first-class
 " 2½ to 3 " 1 year, first-class

45	3 50	35 00
25	2 50	25 00
40	3 50	30 00
25	2 00	20 00

Varieties — SWEET.—Gov. Wood, Black Tartarian, Yellow Spanish, Napoleon, Bigarreau, Black Eagle, Windsor, Allen, etc.
 SOUR—Early Richmond, Reine Hortense, May Duke, Montmorency, Louis Phillipe, Eng. Morello, etc.

THE BRASSINGTON CHERRY.

This new Seedling Cherry leads all other Sour Cherries in size, quality and productiveness. Ripens about with Early Richmond, the largest Sour Cherry grown. Dark Red, sprightly subacid, of the best quality and very productive. It originated in Oceana County, Mich. The trees are very thrifty, upright growers. (See cut on page 7.)

First-class, 4 to 5 feet.....
 Medium, 3 to 4 feet.....

50	5 00	50 00
30	3 00	30 00

QUINCE TREES.

Orange, Quince, 1 year, 3 to 4 feet.....
 Champion, 1 year, 3 to 4 feet.....
 Rea's Mammoth, 1 year, 3 to 4 feet.....

40	3 00	25 00
40	3 00	25 00
40	4 00	35 00



	Each	Per 10	Per 100
MULBERRIES			
New American, and Downing, 4 to 5 feet, 1 year.....	\$0 50	\$4 00	\$35 00
Russian, 5 to 6 feet.....	25	2 50	25 00
RASPBERRIES			
Gregg, Cuthbert, Palmer, Kansas, Golden Queen, Loudon, Cumberland } King, Columbian		30	1 25
Plum Farmer—Many of our largest berry growers claim this is the largest } and most productive Black Raspberry grown. I know of nothing better. }		50	1 50
St. Regis		50	3 50
BLACKBERRIES			
I have on hand a Large Stock of Blowers and ELDORADO Blackberries, when Quality and Productiveness are desired, these two are the leaders. The Blowers have produced more than 8,000 quarts per acre. They are Hardy, Thrifty and Productive.			
Blowers		50	2 00
Eldorado		40	2 00
Wilson's Early, Snyder, Taylor's Prolific, Early Harvest, Erie		40	1 75
Lucretia Dewberry		50	1 25
Parties wishing berries in lots of 500 or more should write for prices, stating varieties and number wanted.			
GOOSEBERRIES			
Houghton's, 2 years	10	75	8 00
Downing, 2 years	15	1 00	10 00
Industry, 2 years	15	1 50	12 00
CURRANTS			
Cherry, 2 years.....			
Fay's New Prolific, 2 years.....			
La Versailles, 2 years.....			
Pres. Wilder			
White Grape, 2 years.....	10	60	5 00
Victoria, 2 years.....			
Lee's Prolific (Black), 2 years.....	10	70	6 00
PERFECTION CURRANT			
The Perfection Currant is a cross of the Fay and White Grape and combines the good qualities of both. Color, bright red, quality the best. It has larger berries, larger clusters and is more prolific than any other Currant now offered to the public. No garden is complete without the Perfection. Good strong plants			
	15	1 50	12 00
STRAWBERRIES			
(All Strawberry plants should be shipped by express.)			
Marshall, Bubach, } Jessie, Glen Mary, } Wm. Belt, Haver- } land, Michael's } Early, Sir Wil- } liam, Brandywine, } Sample, Giant, } Senator Dunlap, } Parson's Beauty, } Ryckman. } \$4.00 per 1,000		20	60
Superb			1 00
ASPARAGUS			
Conover's Colossal, } 2 years	10	30	1 00
Columbian Mammoth } White	10	50	1 50
RHUBARB			
Linnaeus.....	10	1 00	7 00



SEN. DUNLAP.

GRAPE VINES
All First-Class Plants.

	Each	Per 10	Per 100
Brighton, 1 year.....	\$0 10	\$ 60	\$4 00
“ 2 years.....	15	1 50	6 00
Catawba, 1 year.....	10	50	3 00
“ 2 years.....	10	65	4 00
Concord, 1 year.....	10	30	2 00
“ 2 years.....	10	50	3 00
Delaware, 1 year.....	10	80	4 00
“ 2 years.....	10	1 20	5 00
Campbell's Early, 1 yr	20	1 00	7 00
“ “ 2 yr	20	1 50	10 00
Moore's Early, 1 year	10	1 00	5 00
“ “ 2 year	10	1 00	6 00
Pocklington, 1 year..	10	60	4 00
“ 2 years	10	1 00	5 00
Worden, 1 year.....	10	75	4 00
“ 2 years.....	10	1 00	5 00
Niagara, 1 year.....	10	50	3 00
“ 2 years.....	10	50	4 00
Wyoming Red, 1 yr.	15	80	4 00
“ “ 2 yr.	15	1 00	6 00



BRASSINGTON

(See Page 5.)

Those wishing to buy Grape Vines in large quantities, please write for special prices, stating the variety and quantity wanted.

NUTS


	Each	Per 10
American Sweet Chestnut, 5 to 6 feet.....	\$0 30	\$ 2 50
“ “ “ 3 to 4 feet.....	20	1 50
Japan “ “ 3 to 4 feet.....	60	4 00
Paragon, 3 to 4 feet.....	50	4 00

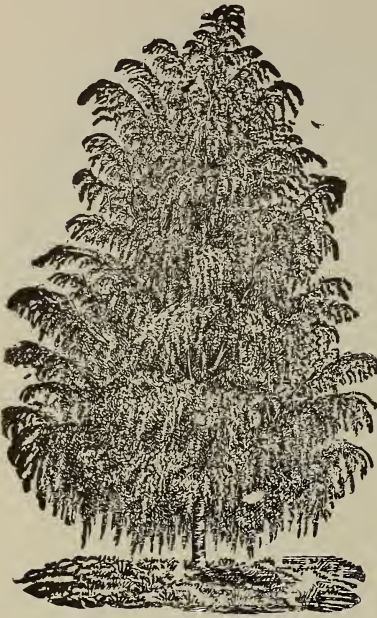
HORSE CHESTNUTS

White Flowering, 5 to 6 feet.....	50
“ “ 6 to 7 feet.....	60
“ “ 8 to 9 feet.....	1 00
“ “ 10 to 12 feet.....	2 00
Red “ 4 to 5 feet.....	1 00

MAPLE.

Silver Leaf 8 to 10 feet..... Extra fine.....	50
“ 10 to 12 feet..... “ “	75
“ 12 to 15 feet 2 in. in diam. “ “	1 00
“ 2½ to 3 in. in diameter	1 50
Sugar Maple, 8 to 10 feet.....	75
“ 10 to 12 feet.....	1 00
Norway Maple, 8 to 10 feet.....	75
“ 1½ in. in diameter	1 50
“ 2 in. in diameter.....	1 75
“ 2½ in. in diameter.....	2 00
Wier's Cut Leaf, 8 to 10 feet.....	75
“ “ “ 10 to 12 feet.....	1 00

 Send your orders early.



CUT LEAF WEeping BIRCH.

WEEPING TREES.

	Each
Birch, Cut Leaved, 4 to 5 feet.....	\$0 60
“ “ “ 6 to 7 feet.....	1 00
“ “ “ 2 to 2½ in. in diameter...	2 00
Willow Kilmarnock, 2 years, fine.....	1 00
“ New American, 2 year head.....	75
“ Wis. Weeping, 6 to 8 ft.....	75
“ “ “ 8 to 10 ft.....	1 00
Camperdown, Weeping Elm, 1 year heads	1 00
Tea's Weeping Mulberry, 1 year heads...	1 00

ELM.

American, 8 to 10 feet.....	60
“ 12 to 14 feet.....	1 00
“ 2½ to 3 inches in diameter...	2 00

ORIENTAL PLANE.

One of the best-rapid growing trees for shade.

8 to 10 feet, 1¼ inch in diameter.....	75
10 to 12 feet, 1½ inch in diameter.....	1 00
10 to 12 feet, 2 inches in diameter.....	1 25

CATALPA.

Speciosa, 8 to 10 feet.....	50
“ 10 to 12 feet.....	75
“ 10 to 12 feet, 2½ to 3 inch	1 00
Catalpa Bungei, Grafted, 1 year heads, 5 to 7 feet	75
“ “ “ 2 year heads, 5 to 7 feet.....	1 50

EUONYMOUS.

Strawberry Tree, 3 to 4 feet.....	30
“ “ 5 to 6 feet, very fine.....	50

RHODODENDRON.

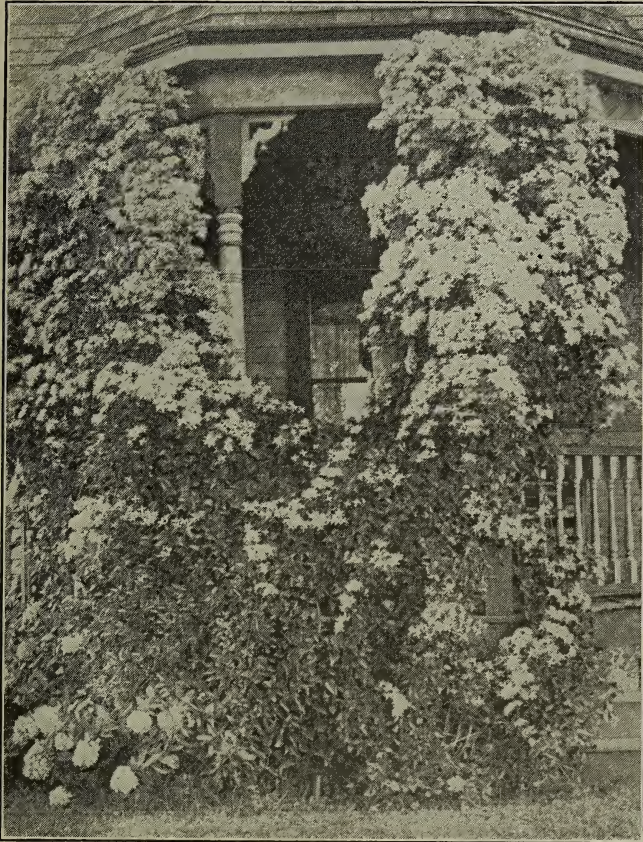
These are the most magnificent of all evergreen shrubs. With rich green foliage and superb clusters of showy flowers.

Catawbiense, 18 inches, extra fine.....	1 00
Choice grafted varieties, 18 inches	2 00

If in need of Lime, Sulphur, Arsenate of Lead, or Scalecide, write me for prices. I handle none but THE BEST that is made.

DECIDUOUS SHRUBS.

These shrubs are not the small cheap stock usually sold from greenhouses, but are all hardy nursery grown stock.



CLEMATIS PANICULATA—See page 11.

Each.

WIEGELAS.

In variety, 2 to 3 ft.	\$0 25
In variety, 4 to 5 ft.	50
Variegated-leaved, 2 to 3 feet.....	30

PYRUS JAPONICA.

Scarlet, 1 to 1½ ft.	25
Scarlet, 2 to 3 ft. ..	30

ALTHEA, OR ROSE OF SHARON.

Double and Single, 8 different varieties	25
Variegated-leaved, 2 to 3 feet.....	30

FRINGE.

Purple, 3 to 4 feet	25
" 4 to 5 feet, extra fine.....	35
White, 3 to 4 feet...	40

SPIREA.

Golden, 2 to 3 feet	25
Van Houtte, 3 feet..	25
" " 4 to 5 feet	35
Anthony Waterer, 1 to 1½ feet.....	25

SNOWBALL.

2 to 3 feet	25
Viburnum Plicatum, from Japan, 2 to 3 feet	40

ALMONDS.

Double Red Flowering, 2 to 3 feet.....	25
" Pink Flowering, 2 to 3 feet.....	25
" White Flowering.....	25

PHILADELPHUS.

Syringus, 3 to 4 feet, 5 varieties.....	25
Aurea, 2 to 3 feet.....	25

AZALEA.

Mollis, Hardy, 12 inches, Very fine.....	75
Choice Grafted Varieties, 18 inches.....	1 25
Amoena, 8 to 12 inches.....	50

HYDRANGEAS.

PANICULATA GRANDIFLORA—This we consider one of the most desirable Hardy Flowering Shrubs in cultivation. The flowers are immense pyramidal panicles—snow white—and continue in bloom from July to November.
 2 to 3 feet 25
 Tree form, 2 to 3 feet..... 40

CORNUS.

Sanguinea, 2 to 3 feet 25
Elegantissima, 2 to 3 feet 50

CALYCANTHUS. ("Sweet Scented Shrub.")

Floridus, 18 to 24 inches..... 20

DEUTZIA.

Crenati Flora Plena,
Gracilis,
Pride of Rochester, Scabra, } 2 to 3 feet..... 25

LILAC.

White and Purple, 2 to 3 feet..... 25
Tree Lilacs, in variety, 4 feet 50

MAGNOLIAS.

Soulangiana, 3 to 4 feet..... 75
Acuminata (Cucumber), 4 to 5 feet..... 50



WISTERIA.

Sinensis Alba..... 35
Double Purple..... 25

HONEYSUCKLE.

Scarlet Trumpet..... 20
Chinese Evergreen 20
Monthly Fragrant 20

IVY.

English..... 20

AMPELOPSIS.

Extra fine 3 year plants.

Voitchii..... 25
American..... 25

CLEMATIS.

Each.

A beautiful class of hardy climbers, many of the varieties with flowers five to seven inches in diameter. Excellent for pillars or trellises, or when used for bedding or running over rock work or an old tree or stump they make an excellent show. They delight in rich soil, a sunny situation and are perfectly hardy.

Duchess of Edinburg. A free flowering double white variety, with medium-sized flowers.....	\$ 0 50
Henryi. Creamy white, large and fine, very hardy and strong grower.....	50
Jackmanii. The flowers when fully expanded are from four to six inches in diameter, intense violet purple, with a rich velvety appearance, distinctly veined. It flowers continually from July until cut off by frosts. The strongest grower and best bloomer in the collection.....	50
Mad. Van Houtte. Pure white, extra fine.....	50
Ramona. A strong, rampant grower, and very hardy. A free and perpetual bloomer; flowers very large; color a deep rich lavender; very showy.....	50
Coccinea. (The Scarlet Clematis.) The flowers are bell-shaped; in color a rich, deep, coral scarlet, shining as if polished, and lasting a long time when cut.....	35
Paniculata. See cut on page 9. Rapid grower; free bloomer. A profusion of small white sweet scented flowers; very desirable.....	35

ARISTOLOCHIA

(Dutchman's Pipe)

Strong 3 year vines	35
---------------------------	----

LARGE FLOWERING FRENCH CANNAS.

I have a large collection. Among the most desirable are: Queen Charlotte, Madam Crozy, Austria, Florence Vanghan, Chas. Hendersor, Black Beauty, etc. Price, 10 cents each; \$1.00 per dozen.

CALADIUMS.

The Caladiums are among our finest plants for tropical effect. Large Imported Bulbs, 25c each.

LILY OF THE VALLEY.

One of the most exquisitely delicate, highly perfumed, early spring flowers. Snow white and perfectly hardy. It will thrive in any soil. Large clump of flowering plants, 25c each.

PÆONIES.

Pæonies. (Herbaceous) These are among the finest hardy flowers. I have twelve different varieties of the finest imported stock—deep red, deep rose, rich crimson rose, buff center, dark purplish red, pink, cream center, flesh white, etc. 25c each. Extra large size 50c each.

TUBEROUS-ROOTED BEGONIAS.

Of all the beautiful flowers grown, these are my favorites. They bloom continually from May till November and furnish such a variety of the most beautiful flowers of gorgeous colors. They hold their perfect form and colors for a long time. The same blossom often lasting for ten days in perfect condition. The bulbs should be started in pots in the house in March or the fore part of April and as soon as all danger from frost is past, transplant into a bed of good rich soil close to the north side of the house so the direct rays of the sun will not hit them. Fine imported bulbs of assorted varieties, 10c each; \$1.00 per dozen; or if sent by mail, 1c each extra.



ROSES.

TEA—Everblooming.

Strong, healthy plants. 20c. each. 6 for \$1.00.

Perle des Jardins—This magnificent Rose still retains its position as the finest Rose of its color ever introduced, and grows into perfect favor year after year. The color varies from canary to golden yellow; flowers large and beautifully formed.

Catharine Mermet—One of the finest Roses grown. The buds are very large and globular, the petals being recurved and showing to advantage the bright pink of the center, shading into light creamy pink. A strong grower and fine bloomer.

Papa Gontier—A magnificent red Tea. It is a strong grower, with fine healthy foliage; the buds are large and long, with thick, broad petals of a dark carmine crimson color, changing to a lighter shade in the open flower. An excellent winter blooming variety, and one of the best for outdoor planting, opening up its flowers in beautiful shape.

The Bride—This is decidedly the most beautiful white Tea rose, and more of them are grown for cut flowers than all other White Roses combined. The flowers are very large and double, on long, stiff stems, of fine texture and substance, and last a long time in a fresh state after being cut.

Marechal Neil—Beautiful deep yellow, very large, full, globular form; sweet-scented, free flowering; one of the finest yellow Tea-scented Roses yet introduced.

CLIMBERS.

Strong, healthy, out-door grown, dormant plants, 20c. each; 6 for \$1.00.

Baltimore Belle—Nearly white; one of the best white climbers.

Queen of the Prairie—Bright rose red; fine grower.

Seven Sisters—Crimson, changing to white.

Dorothy Perkins—One of the finest climbing Roses. Large size. Shell Pink.

Tennessee Belle—Bright rose blush.

RAMBLERS.

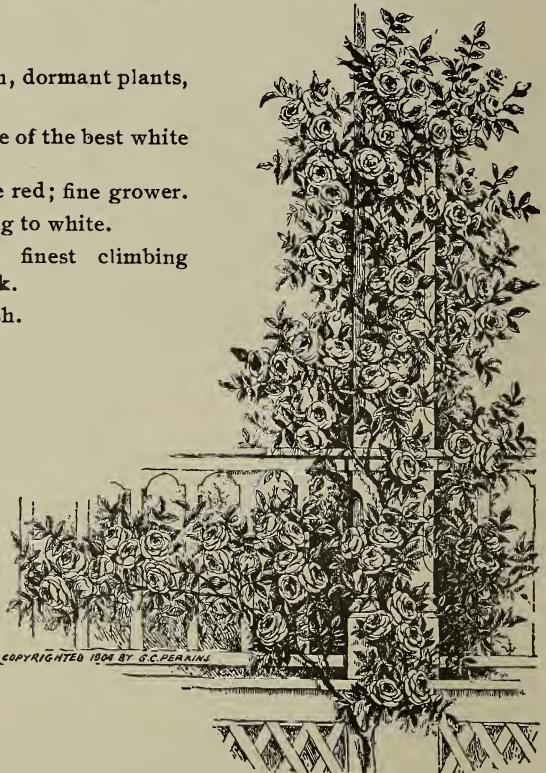
Crimson Rambler—Crimson scarlet. One of the finest new climbing roses, 20c. each.

Yellow Rambler, Aglaia—The finest yellow climbing rose, 25c.

White Rambler—Pearly white, free grower and remains in blossom for a long time, 25c. each.

Baby Rambler—A dwarf bush. Blooms in clusters continually all summer. Very desirable for bedding. 25c. each.

One of each of the 4 Ramblers for 75c.



BALTIMORE BELLE.

HARDY ROSES.

These Hardy Roses should be planted in deep rich soil, and cultivated often, or if set where they cannot be cultivated, the ground should be loosened up with a hoe, often, and mulched with fine well-rotted manure. Trim them well in early spring, and they will repay you for all the extra care you give them. If properly cared for you should have flowers during the entire season from June to November.

FRAU KARL DRUSCHKI.

The finest White Rose grown, perfectly hardy, a rank grower and free bloomer. The blossoms are large, snow white, very double, and a great favorite with all who have seen it. 25c. each. See cut.

HYBRID PERPETUAL.

These are not the tender, hot-house plants that are sold so low, but are all strong, hardy, out-door Roses. 25c. each; 6 for \$1.00.

Paul Neyron—Flowers very large, rose color; a strong grower and free bloomer.

Gen. Washington—Scarlet-crimson; one of the best.

Gen. Jacqueminot—Brilliant crimson; one of the finest scarlet Roses.

Jules Margottin—Deep brilliant rose; fine.

Mrs. J. H. Laing—Soft, delicate pink; one of the best.

American Beauty—Flowers large and very double; color a rich deep rose.

Coquette des Alps—One of the finest, pure white; flowers large and a profuse bloomer.

Marshall P. Wilder—Bright, cherry carmine; free bloomer.

Madam Plantier—Pure white.

Eugene Furst—A beautiful velvety crimson, free bloomer.

Tom Wood—Crimson, free bloomer, considered one of the best.

Bon Stetton—Rich velvety maroon, large and free bloomer.

MOSS ROSES.

Strong, healthy plants. 25c. each; 5 for \$1.00.

Perpetual White—Pure white blooms in clusters.

Luxemburg—Brilliant red.

Crested—The finest of all for buds.

SPECIAL OFFER No. 10.

For the sake of encouraging my customers in setting Roses, I will furnish 12 H. P. Roses, *strong, healthy plants*, of six different varieties, my selection of varieties, for \$1.50. This is a rare chance to get first class Roses at half price.



FRAU KARL DRUSCHKI.

EVERGREENS.

Each Per 10

ARBOR VITAE.

American, 2 to 3 feet.....	\$0 25	\$2 00
“ 3 to 4 feet.....	30	3 00
“ 4 to 5 feet.....	50	4 00
Pyramidalis, 12 to 15 inches.....	40	3 50
“ 2 to 3 feet.....	50	3 50
“ 3 to 4 feet.....	60	4 00
Hovey's Golden, 12 to 15 inches.....	40	
“ “ 2 feet.....	50	
Siberian, 12 to 15 inches.....	30	
“ 2 feet.....	40	
Tom Thumb.....	45	

FIR—SILVER.

American Balsam, 18 to 24 inches.....	30
“ “ 3 to 4 feet.....	50
“ “ 4 to 5 feet.....	75

JUNIPERS.

Irish, 18 to 20 inches.....	30
“ 2 to 3 feet.....	50
“ 3 to 4 feet.....	75
Virginia Red Cedar, 2 to 3 feet.....	50

PINE.

Austrian, 12 to 15 inches.....	25
“ 2 to 3 feet.....	50
Scotch, 12 to 15 inches.....	25
“ 2 to 3 feet.....	50
White, 18 to 24 inches.....	25
“ 2 to 3 feet.....	40

SPRUCE.

Norway, 12 to 15 inches.....	20	1 50
“ 18 to 24 inches.....	25	2 00
“ 2 to 3 feet.....	40	3 00
“ 4 to 5 feet.....	60	6 00
Hemlock, 12 to 15 inches.....	25	2 00
“ 2 to 3 feet.....	30	2 50

RETINOSPORA.

Plumosa, 10 to 12 inches.....	20
“ 18 to 24 inches.....	25
“ Aurea, 3 to 4 feet.....	50



IRISH JUNIPER.



SPRUCE.

See Clubbing Rates on page 3.

Please send your orders early.

HEDGE PLANTS.

	Each	Per 10	Per 100
Norway Spruce, 10 to 12 inches.....	\$0 10	\$0 75	\$5 00
American Arbor Vitæ, 18 to 24 inches, extra.....	15	1 25	10 00
“ “ “ 12 to 18 inches.....	10	90	7 00
“ “ “ 8 to 12 inches.....	10	80	5 00
Osage Orange, 1 year.....	\$3 00 per 1000		
Black Locust, 1 year.....	5 00 per 1000	25	1 00
Cal. Privet, 18 to 24 inches.....	30 00 per 1000	50	4 00
Cal. Privet, 2 to 3 feet.....	40 00 per 1000	75	5 00
Catalpa Speciosa, 1 year, 12 to 15 inches....	5 00 per 1000		



MORTGAGE LIFTER.

SEED CORN.

I have a fine stock of seed corn, and send out none but corn shelled from the best selected ears.

MORTGAGE LIFTER.

This justly celebrated Field Corn needs no recommend from me. The ears are of perfect shape, kernels long, with from 16 to 25 rows of golden yellow grains, well filled out to the end of the cob.

The Mortgage Lifter is my favorite and yields more bushels to the acre than any other that I have ever seen.

It is a rank grower, often bearing two large ears to the stalk.

10 lbs. of Shelled Corn.....	\$.60
25 lbs. of Shelled Corn.....	1.25
56 lbs. of Shelled Corn.....	2.50

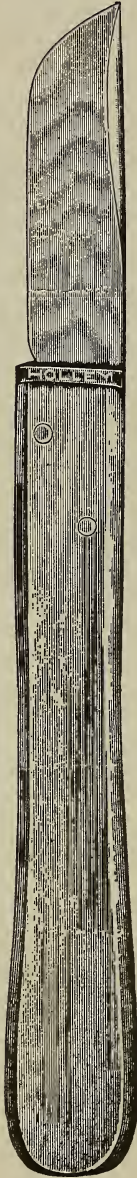
DISTANCES FOR PLANTING.

Standard Apples.....	30 feet apart each way
Standard Pears and strong growing Cherries	20 “ “ “
Duke and Morello Cherries.....	18 “ “ “
Standard, Plums, Apricots, Peaches, Nectarines.....	18 to 20 “ “ “
Dwarf Pears.....	10 to 12 “ “ “
Grapes.....	rows 9 to 10 feet apart, 7 to 10 feet in rows.
Currants and Gooseberries.....	3 to 4 feet apart.
Raspberries and Blackberries	3 to 4 by 5 to 7 feet apart.
Strawberries for field culture.....	1 to 1½ by 3½ to 4½ feet apart.
Strawberries for garden culture.....	1 to 2 feet apart.

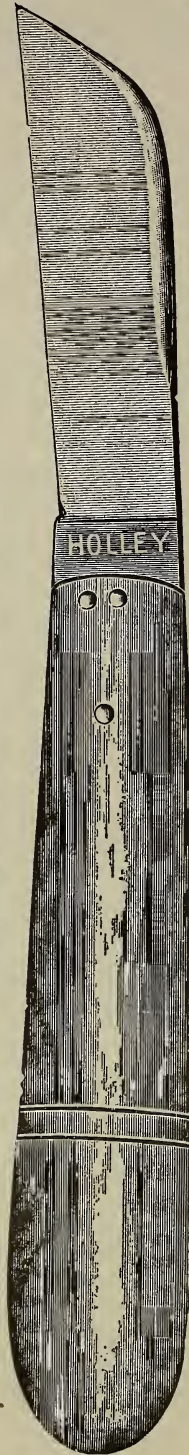
NOTE.—A most excellent way in planting an apple orchard 30 feet apart is to plant peaches in between. By the time the apples require the ground the peaches will have passed their prime and can be removed.

PRUNING SHEARS AND KNIVES.

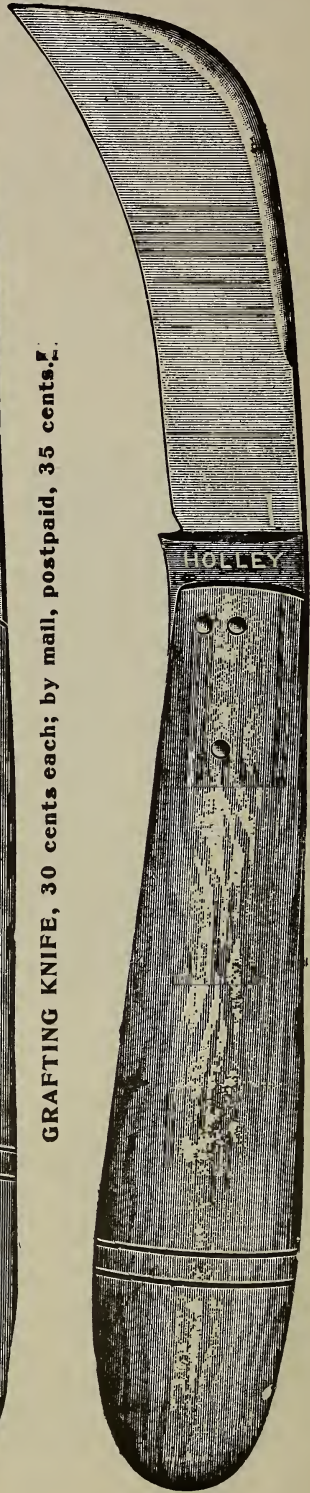
Very many of my customers have no doubt had trouble in buying Pruning Shears and Knives that were of good quality at reasonable prices. They are either too hard or too soft, are poorly made and dear at any price. I am having manufactured expressly for my use and customers, Pruning Shears and Knives that are made of the BEST QUALITY OF STEEL and tempered expressly for trimming, and have put the price on them very low, considering quality of goods, as there is nothing better manufactured.



BUDDING KNIFE, 25 cents each; by mail, post-paid, 30 cents.

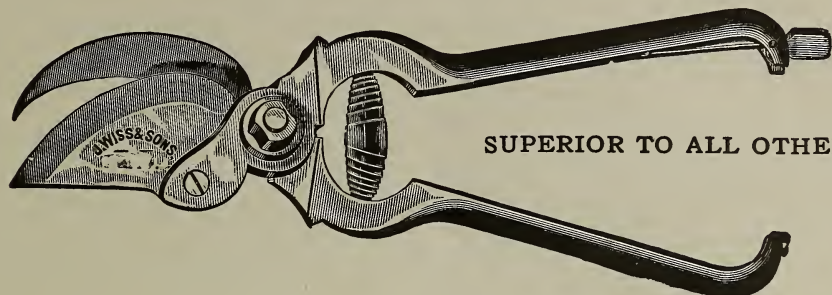


GRAFTING KNIFE, 30 cents each; by mail, postpaid, 35 cents.



PRUNING KNIFE, 35 cents each; by mail, postpaid, 40 cents.
All three of the above knives by mail, postpaid, 90 cts.

SOLID STEEL PRUNING SHEARS.



These Pruning Shears are forged entirely of steel. All the parts are milled and interchangeable. The blade, which is of the best cutlery steel, is fitted to the handle in a unique manner, securing perfect rigidity and ease of replacement in case of wear or breakage.

Price, By Mail, Post Paid, \$2.10 Each.

Price when shipped with other goods, \$2.00 each.

Extra Blades, 50c each. Extra Springs, 10c each.

These Shears are fully warranted. There is nothing better made.

CARE OF TREES AND PLANTS

After they are received.

While we realize fully that nearly all of the fruit growers of today understand the setting and handling of nursery stock, still for the benefit of the few who are not accustomed to transplanting trees and plants, we make the following suggestions:

Preparation for Planting.

Always have the ground in fine condition by deep plowing and thoroughly pulverizing. This can be done on ground only that is well drained. A little extra labor in getting the soil well and deeply pulverized will add much to the growth of the trees the first season.

If the trees are to be set in a lawn or where the ground cannot be plowed, then spade the ground up well and deep, for at least three feet in diameter and eighteen inches deep.

Care of Trees before Planting.

As soon as trees are received from the nursery they should be examined and cared for at once. Do not delay. If the quantity is so large, or for any other reason they cannot be set at once, they should then be opened out and separated, and heeled in the ground, so that the moist fine soil will come in contact with and thoroughly cover all of the roots. Pack the soil about them so as to exclude all air from the roots. It is better to heel them in on or near the ground where they are to be set, so that a few only can be taken out at a time and set without being long exposed to the air.

Directions for Planting. Dig the holes large enough to admit all of the roots in their natural position, without bending or cramping them. Do not dig the holes till you are about ready to set the trees, as the soil soon dries out and is not as fresh as if just dug out. If dug larger and deeper than the size of the tree requires, and then partly filled again with good soil from the top of the ground, it will be all the better for the extra labor.

Before setting the tree cut off all broken or bruised roots with a sharp knife, and all roots that have been cut with the spade in digging should be cut again, sloping from the under side. If this cut is made smooth with a sharp knife it is much better than if done poorly or left without smoothing at all. A smooth fresh-cut root, set in moist, fine soil, commences to heal over and throws out fine fibrous roots at once, which act as feeders for the tree, while if the roots are left in a broken, bruised or mangled condition, they remain dormant and in about the same condition during the season, making but very little if any growth.

Now let some one hold the tree in position while you fill the hole with fine moist, rich soil. Care should be taken to keep each and every root in its natural position, filling under the roots with the hands, and when well filled press all down firm with the foot. Set the tree the same depth that it grew in the nursery, or but very little deeper. After the earth has been well pressed down with the feet throw a little fine loose soil on top, and leave without packing, as it will help to hold the moisture better than if the top is left hard.

Setting Cherries. To those not accustomed to transplanting Cherries, a few hints along that line may be of benefit. Cherries are the most difficult Fruit Tree to transplant that we have, and for that reason we give them the greatest care in Growing, Handling and Packing, so you can depend on getting them in the best condition possible. As soon as the Cherry Tree is well set, cut off all branches to within about two inches of the body, or in other words, leave as much root and as little top as you can. This same rule applied to Peaches will give good results.

Mulching. No person who sets a tree can afford to leave it without mulching, either with coarse or fine barnyard manure, sawdust, grass, weeds, straw or something to help shade the ground. Barnyard manure is much the best. Cover the ground around the tree. It will not only help to shade the ground and keep it from drying up, but will enrich the soil and add much to the growth of the tree.

Selecting of Varieties. Any person, not acquainted with the different varieties of fruit, who wishes to leave the selection to me, can write their order stating the number of trees wanted of each kind and I will give such orders my personal attention, selecting not only the best varieties, but those that are best adapted to their section.

Location of Nurseries. My nurseries are located near the shores of Lake Erie, about thirty miles east of Cleveland, on the Lake Shore & Michigan Southern Ry. and the N. Y. C. & St. L. Ry. Our location is especially adapted to growing healthy, hardy, thrifty trees. We have no trouble from Peach Yellows, or disease of any kind. If you wish the best that can be grown, I am prepared to furnish them. Please order early.

Aphis.

Some of our fruit growers are having trouble with a green louse or Aphis that cover the new growth of apples, pears, plums and roses and suck the sap until the leaf dies and the tree has the appearance of having blighted. These Aphis are green on apples, pears and plums, and black on cherries. The green Aphis are especially fond of rose bushes. If taken in time they are easily killed by spraying with Extract of Tobacco, Whale Oil Soap and Water in the following proportions:

One fluid ounce of "Black Leaf 40" (which is a concentrated solution of Nicotine-Sulphate), two ounces of whale oil soap (or any good laundry soap will answer), and seven gallons of water. Mix thoroughly and spray thoroughly. If you have no Sprayer, you can dip the twigs and limbs that are covered with Aphis in the solution. It does not injure the foliage, but kills every Aphis that gets wet with it. I can furnish you "Black Leaf 40" as follows:

10½ pounds, by Express	\$12.50
2½ pounds, by Express	3.00
½ pound by Express75

WHALE OIL SOAP.

10 pounds, by Express	\$1.25
2 pounds, by Express30

SAN JOSE SCALE.

I often receive letters of inquiry in regard to the treatment of San Jose Scale. I know of no better method for the Fruit Grower than spraying with Scaleside, or Lime Sulphur solution. Either of these if properly prepared will kill all of the Scale that are wet with the solution.

I would advise spraying all fruit trees early in the Spring before the trees have leafed out, and again in the fall after the leaves have fallen.

It is a very good plan to spray once each year with Scaleside, and once with Lime Sulphur. By so doing you will have the Scale under your control.

Before spraying trees, shrubs, plants or vines infested with this insect, all useless wood should be removed, and the bodies and large limbs should be scraped, so as to remove all loose bark. It is essential that the treatment be thorough and that every part be covered with the spray.

Can furnish my customers either Scaleside, or Lime Sulphur in any quantity, and always at **BOTTOM PRICES**. Price list for the asking.

I handle nothing but the Very Best that is made.

NUMBER OF TREES ON AN ACRE.

30 feet apart each way.....	50	10 feet apart each way.....	435
25 " " "	70	8 " " "	680
20 " " "	110	6 " " "	1210
18 " " "	135	5 " " "	1742
15 " " "	194	4 " " "	2723
12 " " "	300	3 " " "	4840

Rule.—Multiply the distance in feet between the rows by the distance the plants are apart in the rows and the product will be the number of square feet for each plant or hill; which, divided into the number of feet in an acre (43,560), will give the number of trees to the acre.

SPRAY PUMPS.



Auto Spray No. 24.

I have made arrangements with two of the largest manufacturers of Spray Pumps and can now furnish my customers with the best Spray Pumps manufactured, of any size, at very reasonable prices. These Pumps will be shipped direct from the factory. They are made of the best material and fully warranted. I will be pleased to send Spray Pump catalog to anyone requesting one.

If you will kindly state what special work you wish the Spray Pump for, I will be pleased to give you the advantage of my experience, stating which pump I think will be the best for your use, and naming the lowest price on the same. Will also send to any one wishing them, formula for the different kinds of spraying solutions, as well as the best time to spray.

Be sure and order your Spray Pumps early so that you will be all ready to spray when the time comes for that work.

The Auto Spray No. 24 has extreme capacity and will handle all solutions including whitewash. It is so constructed that a high pressure may be maintained with little exertion, and one man can operate the pump all day without fatigue.

All working parts and valves are exposed outside of the barrel where they may be instantly taken apart without disturbing the pump. The pump is constantly primed.

WHAT OTHERS SAY.

A few extracts from letters that I am receiving will give you an idea of the kind of stock I am sending out.

Woodford Co., Ill., May 4, 1914.
S. W. Call, Perry, Ohio.
Dear Sir—Your trees were as nice a lot as I ever bought, and I think will all grow. Hope you will remember me with a catalog next winter, and oblige.
BENJ. KAMP.

Lake Co., Ohio, April 29, 1914.
S. W. Call, Perry, Ohio.
Dear Sir—I like the trees you sent very much. Very satisfactory.
Respectfully yours,
M. A. BREWER.

Ashtabula Co., Ohio, May 1, 1914.
S. W. Call, Perry, Ohio.
Dear Sir and Friend—The nursery stock received all O. K. and well pleased with it. Best we ever planted. Will recommend you to others.
Yours,
A. J. HILEMAN.

Auglaize Co., Ohio, April 28, 1914.
S. W. Call, Perry, Ohio.
Kind Sir—The trees, vines, etc., ordered from you came through in fine condition and I will say they are the best trees I ever got. They are all No. 1. Will send to you again when in need of trees.
E. C. MARTIN.

Vigo Co., Ind., May 27, 1914.
S. W. Call, Perry, Ohio.
Dear Sir—I received your shipment of fruit trees in good condition and was well pleased with them, as they were a fine lot of trees, as good as I ever bought.
Yours truly,
J. MONROE BOLTON.

Westmoreland Co., Pa., April 17, 1914.
S. W. Call, Perry, Ohio.
Dear Sir—I received my trees Thursday. They came in fine shape and am well pleased.
Yours,
W. M. STEEL.

Erie Co., Pa., March 4, 1914.
S. W. Call, Perry, Ohio.
Dear Sir—The nursery stock arrived in good shape and they are a fine lot of trees.
Respectfully yours,
C. GRIMSHAW.

Portage Co., Ohio, April 24, 1914.
S. W. Call, Perry, Ohio.
Dear Sir—Received fruit trees and berry plants all O. K. Was very well pleased with them.
Yours truly,
C. B. ZAISER.

Trumbull Co., Ohio, April 8, 1914.
S. W. Call, Perry, Ohio.
Dear Sir—Your shipment of trees arrived today, and the trees are the best I ever saw.
Yours truly,
F. THAYER WOOD.

Stark Co., Ohio, April 13, 1914.
S. W. Call, Perry, Ohio.
Dear Sir—I received the fruit trees today all in good shape. I am specially well pleased with them.
Respectfully,
W. B. ROYER.

TREE PROTECTORS.

How to best protect our young trees from being girdled by the mice and rabbits during the winter is a question that comes to us at least twice a year—in the fall as we are looking for some protection and again in the spring as we find that many of our trees have been ruined by the mice and rabbits during the winter.

I am using with great success a tree protector, made of wood, cut like veneer 23 inches long, 8 inches wide and 28 to the inch in thickness. Wind them around the tree and shove them down close to the ground—tie a string around to hold them, and they make a perfect protection.

Can furnish them to any of my customers for \$1.00 per 100, \$8.00 per 1,000, on car at this place. Would advise ordering early so they can be shipped by freight.

The demand for these protectors is increasing very rapidly and all who have tried them are well pleased with the perfect protection they afford against mice and rabbits.

When in need of Lime-Sulphur, Scalecide, or Arsenate of Lead, write me for prices, stating the quantity needed.

MAILING LIST.

I wish to revise and correct my mailing list. When you are sending your order, if you will kindly cut the blank from the bottom of this page and send me your name and address, together with the names and addresses of five or more of the best farmers in your section, who are interested in fruit growing, I will not only send them my price list, but will add to your order, **free of charge**, two of our best hardy roses (my selection of varieties) as a compensation for your trouble. These roses will only be shipped when they can be packed with your other orders.

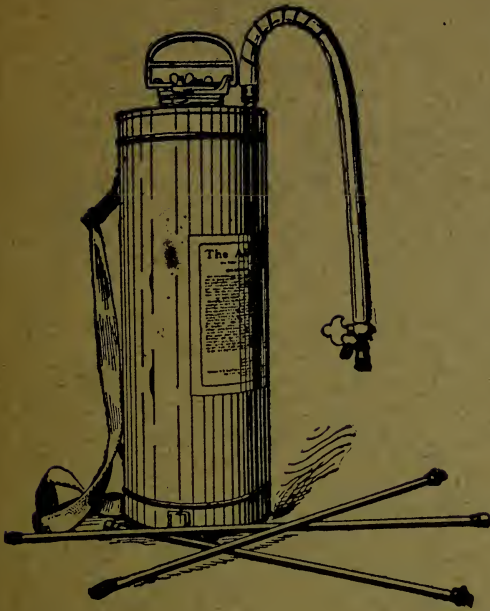
NAME	POST OFFICE	STATE

Quantity

VARIETY

Price

Amount Forward



Auto-Sprayer No. 1

All of our leading fruit growers are aware that our best fruits can only be produced by spraying.

I have a full line of the best sprayers manufactured, and will be pleased to send sprayer circular to any one requesting it.

The sprayer shown herewith is brass tank, and thoroughly well made, strong and durable, the price is very low considering quality. It is fully warranted.

Price\$6.50

Brass Extension Pipe, 2-foot lengths, each 35c.

No farmer or gardner can afford to do without this sprayer.

State of Ohio, Department Agriculture.

State Board of
Agriculture.

Division of
Nursery and Orchard Inspection.

CERTIFICATE OF NURSERY INSPECTION.

No. 11.

Columbus, Ohio, Aug. 4, 1914.

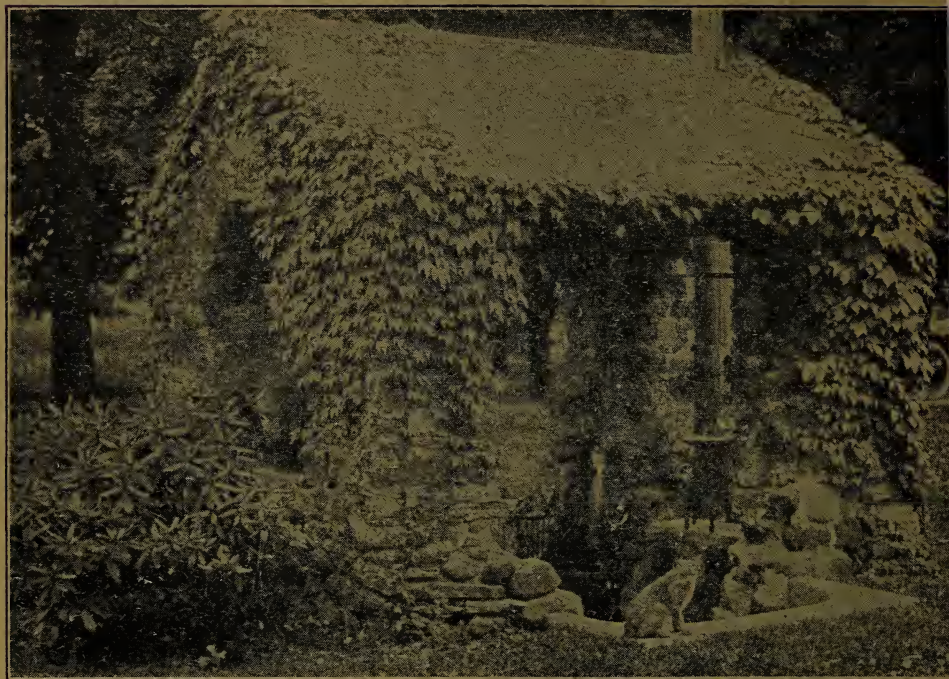
THIS IS TO CERTIFY, That the nursery stock for sale by S. W. CALL, of Perry, County of Lake, State of Ohio, consisting of General Nursery Stock, has been inspected by a duly authorized inspector in compliance with Section 1124, Page 314, Laws of Ohio, 1913, and has been found apparently free from dangerously injurious insects and plant diseases.

THE AGRICULTURAL COMMISSION OF OHIO,

N. E. SHAW,
Chief Inspector.

A. P. SANDLES,
President.

1915



IN THE GOOD OLD SUMMER TIME