

~~The history of Bramo Sangharish. v. 9
 by the Rev. J. C. ...
 Cambridge, 1865~~

The history of Bramo Sangharish. v. 9
 by the Rev. J. C. ...
 Cambridge, 1865

102 MSS. JAN. 65





Handwritten text in a cursive script, likely a historical document or manuscript. The text is written in dark ink on aged, yellowish paper. It consists of approximately 15 lines of text, with some lines starting with large, decorative initials. The script is dense and difficult to decipher without specialized knowledge of the language and dialect. The text appears to be a formal document, possibly a contract or a record of a transaction, given the presence of large initials and the structured nature of the lines. The paper shows signs of age, including some staining and discoloration, particularly towards the bottom edge.

Handwritten text at the top of the page, featuring a large decorative initial letter.

Second line of handwritten text with a large initial.

Third line of handwritten text with a large initial.

Fourth line of handwritten text with a large initial.

Fifth line of handwritten text with a large initial.

Sixth line of handwritten text with a large initial.

Seventh line of handwritten text with a large initial.

Eighth line of handwritten text with a large initial.

Ninth line of handwritten text with a large initial.

Tenth line of handwritten text with a large initial.

Eleventh line of handwritten text with a large initial.

Twelfth line of handwritten text with a large initial.

Thirteenth line of handwritten text with a large initial.

Fourteenth line of handwritten text with a large initial.

Fifteenth line of handwritten text with a large initial.

Handwritten text in a cursive script, likely a list or index, with several large initials or section markers (e.g., **M**, **H**, **A**) interspersed throughout the entries. The text is written on aged, yellowed paper and is oriented vertically on the page.

Handwritten text in a cursive script, likely a historical document or manuscript. The text is arranged in approximately 15 horizontal lines across the page. Each line begins with a large, decorative initial letter, possibly 'M' or 'M', followed by several lines of smaller text. The script is dense and difficult to decipher. The paper shows signs of age, including discoloration and some staining. There are also some faint markings and possibly small diagrams or symbols interspersed within the text.

Handwritten text at the top of the page, possibly a title or header.

First section of handwritten text, featuring several large, decorative initial letters.

Second section of handwritten text, continuing the narrative or list.

Third section of handwritten text, with prominent initials.

Fourth section of handwritten text, showing dense script.

Fifth section of handwritten text, including a large initial.

Sixth section of handwritten text, with a large initial.

Seventh section of handwritten text, continuing the text.

Eighth section of handwritten text, featuring a large initial.

וְהַיְיָ יְהוֹשִׁיעַ אֶת־עַמּוֹתָאָהֱרָרְךָ
 וְעַמְּךָ אֶת־יְהוֹשִׁיעַ אֶת־עַמְּךָ
 וְעַמְּךָ אֶת־יְהוֹשִׁיעַ אֶת־עַמְּךָ
 וְעַמְּךָ אֶת־יְהוֹשִׁיעַ אֶת־עַמְּךָ
 וְעַמְּךָ אֶת־יְהוֹשִׁיעַ אֶת־עַמְּךָ
 וְעַמְּךָ אֶת־יְהוֹשִׁיעַ אֶת־עַמְּךָ
 וְעַמְּךָ אֶת־יְהוֹשִׁיעַ אֶת־עַמְּךָ
 וְעַמְּךָ אֶת־יְהוֹשִׁיעַ אֶת־עַמְּךָ
 וְעַמְּךָ אֶת־יְהוֹשִׁיעַ אֶת־עַמְּךָ
 וְעַמְּךָ אֶת־יְהוֹשִׁיעַ אֶת־עַמְּךָ
 וְעַמְּךָ אֶת־יְהוֹשִׁיעַ אֶת־עַמְּךָ
 וְעַמְּךָ אֶת־יְהוֹשִׁיעַ אֶת־עַמְּךָ
 וְעַמְּךָ אֶת־יְהוֹשִׁיעַ אֶת־עַמְּךָ
 וְעַמְּךָ אֶת־יְהוֹשִׁיעַ אֶת־עַמְּךָ
 וְעַמְּךָ אֶת־יְהוֹשִׁיעַ אֶת־עַמְּךָ
 וְעַמְּךָ אֶת־יְהוֹשִׁיעַ אֶת־עַמְּךָ
 וְעַמְּךָ אֶת־יְהוֹשִׁיעַ אֶת־עַמְּךָ

Handwritten text in a cursive script, likely a medieval manuscript. The text is arranged in approximately 15 horizontal lines across the page. The script is dense and difficult to decipher due to its cursive nature and the age of the parchment. The text appears to be a list or a series of entries, possibly related to a legal or administrative document. The parchment shows signs of wear, including discoloration and some staining, particularly along the left edge. The text is written in dark ink on a light-colored, aged parchment background.

The first thing I did was to
 go to the office and see
 what was going on. I found
 everything in a state of
 confusion. The papers were
 all over the place and
 nobody seemed to know
 what they were doing. I
 tried to get a sense of
 the situation but it was
 impossible. The only thing
 I could do was to get
 some papers and see what
 I could find out. I was
 very disappointed but I
 had to do the best I
 could. I was sure that
 everything would be
 all right in the end.

* The first column of text at the top of the page.

Main body of handwritten text, consisting of approximately 15 lines of dense script.



[The page contains approximately 10 lines of handwritten text, which has been almost entirely obscured by a large, dark, diagonal scribble or ink blot. The text is written in a cursive script and is mostly illegible. The ink is dark brown or black on aged, yellowish paper.]

Handwritten text in a cursive script, likely a list or account, written on aged, yellowed paper. The text is arranged in approximately 15 horizontal lines, with some lines containing multiple entries or sub-entries. The script is dense and difficult to decipher due to its cursive nature and the fading of the ink. The paper shows signs of wear, including creases and discoloration, particularly along the left edge where it was bound. The overall appearance is that of an old, well-used manuscript or ledger.

~~Handwritten text, possibly a list or account, written in a cursive script. The text is mirrored across the page, suggesting it was written on the reverse side and is now bleed-through. The entries are organized into columns and rows, with some lines starting with large initials or decorative flourishes.~~

Handwritten text in a cursive script, likely a historical document or manuscript. The text is written in a dark ink on aged, yellowed paper. It consists of several lines of text, with some words appearing to be in a different language or dialect than the surrounding text. The script is dense and somewhat difficult to decipher due to its cursive nature and the age of the document. There are several large, stylized initials or flourishes interspersed throughout the text, which may indicate the start of new sections or paragraphs. The overall appearance is that of a well-used, historical manuscript.

Vertical text on the right edge of the page, possibly a marginal note or a page number. The text is written in a similar cursive script to the main body of the page. It appears to be a single line of text, possibly indicating a page number or a reference to another part of the document.

Handwritten text in a dense, cursive script, likely a medieval manuscript. The text is written on aged, yellowed parchment and is arranged in approximately 16 horizontal lines. The ink is dark brown or black, and the handwriting is highly stylized and compact. The paper shows signs of wear, including slight discoloration and a faint horizontal crease near the top. At the bottom center of the page, the number '35' is written in a smaller, simpler hand, corresponding to the page number in the top right corner. The text appears to be a single block of prose or a list of entries, though the specific content is illegible due to the cursive style.

Handwritten text in a cursive script, likely a letter or document, written on aged paper. The text is arranged in approximately 15 horizontal lines. The ink is dark, and the paper shows signs of wear, including some staining and discoloration. The script is dense and difficult to decipher without specialized knowledge of the language and handwriting style. The text appears to be a formal or semi-formal communication, possibly a letter of introduction or a business document. The lines are roughly parallel, with some variations in spacing and alignment. The overall appearance is that of a well-preserved but aged historical document.

Handwritten text in a cursive script, likely a list or index, written on aged, yellowed paper. The text is arranged in approximately 15 horizontal lines, each beginning with a large, decorative initial letter, possibly 'H' or 'Hs'. The script is dense and somewhat difficult to decipher due to its cursive nature and the fading of the ink. The paper shows signs of wear, including creases and discoloration, particularly along the left edge where it was bound.

Handwritten text in a cursive script, likely a list or index, written on aged, yellowed paper. The text is arranged in approximately 15 horizontal lines, with each line beginning with a large, decorative initial letter, possibly 'H' or 'H'. The script is dense and difficult to decipher due to its cursive nature and the fading of the ink. The paper shows signs of wear, including creases and discoloration, particularly along the left edge where it was bound. The overall appearance is that of an old, well-used manuscript or ledger.

The first part of the text is written in a dense, cursive script, likely a form of Hebrew or Arabic. It begins with a large, ornate initial letter, possibly 'א' or 'א', followed by several lines of text. The script is highly stylized and difficult to decipher without specialized knowledge.

The text continues with several more lines, maintaining the same dense, cursive style. There are several instances of large, decorative initials throughout the page, which may indicate the start of new sections or paragraphs.

The overall appearance of the text is that of a handwritten manuscript, possibly a legal document, a religious text, or a historical record. The ink is dark, and the paper shows signs of age and wear.

Handwritten text in a cursive script, likely a medieval manuscript. The text is arranged in approximately 15 horizontal lines across the page. The script is dense and characteristic of the late Gothic or early modern period. The paper shows signs of age, including yellowing and some staining, particularly along the left edge. The text appears to be a continuous passage, possibly a letter or a section of a larger work. The ink is dark, and the overall appearance is that of a well-preserved but aged historical document.

The first part of the manuscript contains a dense block of text in a cursive script, likely a form of shorthand or a highly condensed dialect. The text is arranged in approximately 15 horizontal lines. At the top left, there are several large, stylized initials, possibly 'S' and 'E', which may denote specific sections or subjects. The script is very compact, with many letters appearing as ligatures or simplified forms. The handwriting is consistent throughout the page, suggesting a single scribe.

Handwritten text in a cursive script, likely a historical document or manuscript. The text is written on aged, yellowed paper and is oriented vertically on the page. The script is dense and difficult to decipher due to its cursive nature and the fading of the ink. The text appears to be organized into several paragraphs or sections, with some lines starting with large, decorative initials. The overall appearance is that of an old, well-used manuscript.

Handwritten text in a cursive script, likely a historical document or manuscript. The text is arranged in approximately 15 horizontal lines across the page. The script is dense and characteristic of early modern European handwriting. The paper shows signs of age, including yellowing and some staining. The text is written in a dark ink, possibly iron gall or a similar historical ink. The overall appearance is that of a well-preserved but aged historical document.

Handwritten text in Hebrew script, densely packed across the page with frequent line crossings and scribbles.

Handwritten text at the top left of the page, possibly a title or header.

Main body of handwritten text in a cursive script, consisting of approximately 15 lines. The text is densely packed and includes various symbols and flourishes.

Partial view of handwritten text from the adjacent page on the right.

Handwritten text in an early modern script, likely a liturgical book. The text is organized into several columns and paragraphs, with some lines beginning with large decorative initials. The script is dense and cursive.

[Illegible] [Illegible] [Illegible] [Illegible] [Illegible]
 [Illegible] [Illegible] [Illegible] [Illegible] [Illegible]
 [Illegible] [Illegible] [Illegible] [Illegible] [Illegible]
 [Illegible] [Illegible] [Illegible] [Illegible] [Illegible]
 [Illegible] [Illegible] [Illegible] [Illegible] [Illegible]
 [Illegible] [Illegible] [Illegible] [Illegible] [Illegible]
 [Illegible] [Illegible] [Illegible] [Illegible] [Illegible]
 [Illegible] [Illegible] [Illegible] [Illegible] [Illegible]
 [Illegible] [Illegible] [Illegible] [Illegible] [Illegible]
 [Illegible] [Illegible] [Illegible] [Illegible] [Illegible]
 [Illegible] [Illegible] [Illegible] [Illegible] [Illegible]
 [Illegible] [Illegible] [Illegible] [Illegible] [Illegible]
 [Illegible] [Illegible] [Illegible] [Illegible] [Illegible]
 [Illegible] [Illegible] [Illegible] [Illegible] [Illegible]
 [Illegible] [Illegible] [Illegible] [Illegible] [Illegible]
 [Illegible] [Illegible] [Illegible] [Illegible] [Illegible]
 [Illegible] [Illegible] [Illegible] [Illegible] [Illegible]
 [Illegible] [Illegible] [Illegible] [Illegible] [Illegible]
 [Illegible] [Illegible] [Illegible] [Illegible] [Illegible]
 [Illegible] [Illegible] [Illegible] [Illegible] [Illegible]
 [Illegible] [Illegible] [Illegible] [Illegible] [Illegible]

Handwritten text in a cursive script, likely a historical document or manuscript. The text is written in a dark ink on aged, yellowish paper. It consists of approximately 15 lines of dense, flowing script. The handwriting is highly stylized and characteristic of the early modern period. The text is arranged in a single column, with some lines starting with large, decorative initials. The overall appearance is that of a well-preserved but clearly aged historical document.

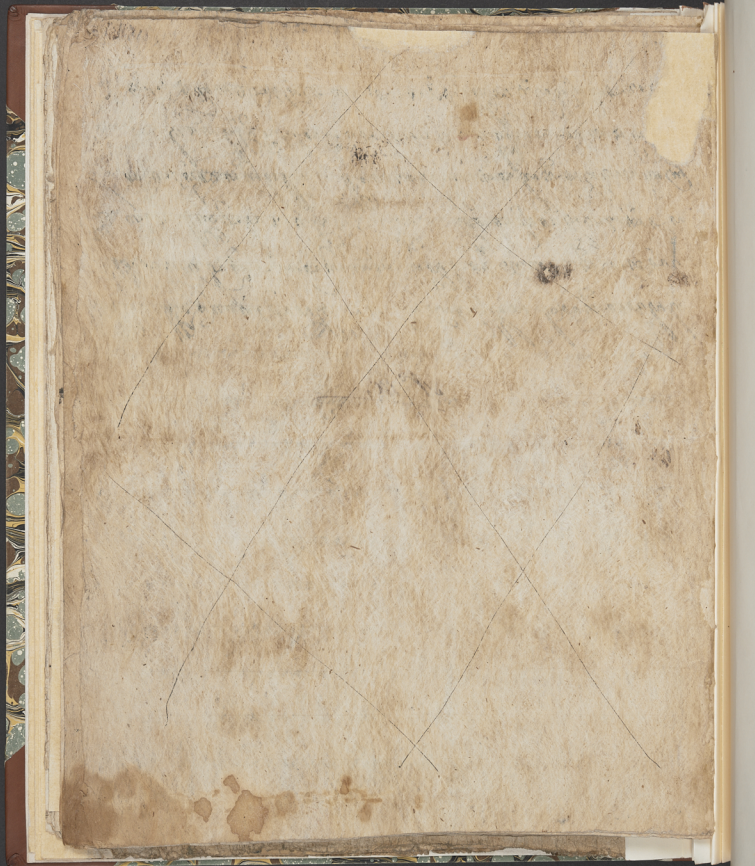
Handwritten text in a cursive script, likely a historical document or manuscript. The text is densely packed and spans the majority of the page. It appears to be a letter or a formal record, with some lines being more prominent than others. The script is characteristic of the late Middle Ages or early modern period. There are several large initials or decorative elements that stand out from the rest of the text. The paper shows signs of age, including some staining and discoloration.

Handwritten text in a cursive script, likely a medieval manuscript. The text is arranged in approximately 15 horizontal lines, with some lines containing large, decorative initials. The script is dense and difficult to decipher without specialized knowledge of the language and script. The page shows signs of age, including discoloration and some wear at the edges.

Handwritten text in a cursive script, likely a medieval manuscript. The text is arranged in approximately 15 horizontal lines across the page. The script is dense and characteristic of the Gothic or similar medieval bookhand. The paper shows signs of age, including some staining and discoloration, particularly in the lower half of the page. The text appears to be a continuous passage, possibly a letter or a section of a larger work.

וְהָיָה כִּי יִשְׁמַע אֱלֹהֵינוּ בְּרוּךְ הוּא
 אֶת הַקְּוִיָּה וְיִשְׁמַע אֶת הַתְּפִלָּה
 וְיִשְׁמַע אֶת הַחֲרָטָה וְיִשְׁמַע
 אֶת הַבְּרַחָה וְיִשְׁמַע אֶת הַשְּׁפָלוּת
 וְיִשְׁמַע אֶת הַתְּהַלָּה וְיִשְׁמַע
 אֶת הַתְּהַלָּה וְיִשְׁמַע אֶת הַתְּהַלָּה
 וְיִשְׁמַע אֶת הַתְּהַלָּה וְיִשְׁמַע
 אֶת הַתְּהַלָּה וְיִשְׁמַע אֶת הַתְּהַלָּה

א. מ.



1527
 1528
 1529
 1530
 1531
 1532
 1533
 1534
 1535
 1536
 1537
 1538
 1539
 1540
 1541
 1542
 1543
 1544
 1545
 1546
 1547
 1548
 1549
 1550
 1551
 1552
 1553
 1554
 1555
 1556
 1557
 1558
 1559
 1560
 1561
 1562
 1563
 1564
 1565
 1566
 1567
 1568
 1569
 1570
 1571
 1572
 1573
 1574
 1575
 1576
 1577
 1578
 1579
 1580
 1581
 1582
 1583
 1584
 1585
 1586
 1587
 1588
 1589
 1590
 1591
 1592
 1593
 1594
 1595
 1596
 1597
 1598
 1599
 1600
 1601
 1602
 1603
 1604
 1605
 1606
 1607
 1608
 1609
 1610
 1611
 1612
 1613
 1614
 1615
 1616
 1617
 1618
 1619
 1620
 1621
 1622
 1623
 1624
 1625
 1626
 1627
 1628
 1629
 1630
 1631
 1632
 1633
 1634
 1635
 1636
 1637
 1638
 1639
 1640
 1641
 1642
 1643
 1644
 1645
 1646
 1647
 1648
 1649
 1650
 1651
 1652
 1653
 1654
 1655
 1656
 1657
 1658
 1659
 1660
 1661
 1662
 1663
 1664
 1665
 1666
 1667
 1668
 1669
 1670
 1671
 1672
 1673
 1674
 1675
 1676
 1677
 1678
 1679
 1680
 1681
 1682
 1683
 1684
 1685
 1686
 1687
 1688
 1689
 1690
 1691
 1692
 1693
 1694
 1695
 1696
 1697
 1698
 1699
 1700
 1701
 1702
 1703
 1704
 1705
 1706
 1707
 1708
 1709
 1710
 1711
 1712
 1713
 1714
 1715
 1716
 1717
 1718
 1719
 1720
 1721
 1722
 1723
 1724
 1725
 1726
 1727
 1728
 1729
 1730
 1731
 1732
 1733
 1734
 1735
 1736
 1737
 1738
 1739
 1740
 1741
 1742
 1743
 1744
 1745
 1746
 1747
 1748
 1749
 1750
 1751
 1752
 1753
 1754
 1755
 1756
 1757
 1758
 1759
 1760
 1761
 1762
 1763
 1764
 1765
 1766
 1767
 1768
 1769
 1770
 1771
 1772
 1773
 1774
 1775
 1776
 1777
 1778
 1779
 1780
 1781
 1782
 1783
 1784
 1785
 1786
 1787
 1788
 1789
 1790
 1791
 1792
 1793
 1794
 1795
 1796
 1797
 1798
 1799
 1800
 1801
 1802
 1803
 1804
 1805
 1806
 1807
 1808
 1809
 1810
 1811
 1812
 1813
 1814
 1815
 1816
 1817
 1818
 1819
 1820
 1821
 1822
 1823
 1824
 1825
 1826
 1827
 1828
 1829
 1830
 1831
 1832
 1833
 1834
 1835
 1836
 1837
 1838
 1839
 1840
 1841
 1842
 1843
 1844
 1845
 1846
 1847
 1848
 1849
 1850
 1851
 1852
 1853
 1854
 1855
 1856
 1857
 1858
 1859
 1860
 1861
 1862
 1863
 1864
 1865
 1866
 1867
 1868
 1869
 1870
 1871
 1872
 1873
 1874
 1875
 1876
 1877
 1878
 1879
 1880
 1881
 1882
 1883
 1884
 1885
 1886
 1887
 1888
 1889
 1890
 1891
 1892
 1893
 1894
 1895
 1896
 1897
 1898
 1899
 1900
 1901
 1902
 1903
 1904
 1905
 1906
 1907
 1908
 1909
 1910
 1911
 1912
 1913
 1914
 1915
 1916
 1917
 1918
 1919
 1920
 1921
 1922
 1923
 1924
 1925
 1926
 1927
 1928
 1929
 1930
 1931
 1932
 1933
 1934
 1935
 1936
 1937
 1938
 1939
 1940
 1941
 1942
 1943
 1944
 1945
 1946
 1947
 1948
 1949
 1950
 1951
 1952
 1953
 1954
 1955
 1956
 1957
 1958
 1959
 1960
 1961
 1962
 1963
 1964
 1965
 1966
 1967
 1968
 1969
 1970
 1971
 1972
 1973
 1974
 1975
 1976
 1977
 1978
 1979
 1980
 1981
 1982
 1983
 1984
 1985
 1986
 1987
 1988
 1989
 1990
 1991
 1992
 1993
 1994
 1995
 1996
 1997
 1998
 1999
 2000
 2001
 2002
 2003
 2004
 2005
 2006
 2007
 2008
 2009
 2010
 2011
 2012
 2013
 2014
 2015
 2016
 2017
 2018
 2019
 2020
 2021
 2022
 2023
 2024
 2025
 2026
 2027
 2028
 2029
 2030
 2031
 2032
 2033
 2034
 2035
 2036
 2037
 2038
 2039
 2040
 2041
 2042
 2043
 2044
 2045
 2046
 2047
 2048
 2049
 2050
 2051
 2052
 2053
 2054
 2055
 2056
 2057
 2058
 2059
 2060
 2061
 2062
 2063
 2064
 2065
 2066
 2067
 2068
 2069
 2070
 2071
 2072
 2073
 2074
 2075
 2076
 2077
 2078
 2079
 2080
 2081
 2082
 2083
 2084
 2085
 2086
 2087
 2088
 2089
 2090
 2091
 2092
 2093
 2094
 2095
 2096
 2097
 2098
 2099
 2100
 2101
 2102
 2103
 2104
 2105
 2106
 2107
 2108
 2109
 2110
 2111
 2112
 2113
 2114
 2115
 2116
 2117
 2118
 2119
 2120
 2121
 2122
 2123
 2124
 2125
 2126
 2127
 2128
 2129
 2130
 2131
 2132
 2133
 2134
 2135
 2136
 2137
 2138
 2139
 2140
 2141
 2142
 2143
 2144
 2145
 2146
 2147
 2148
 2149
 2150
 2151
 2152
 2153
 2154
 2155
 2156
 2157
 2158
 2159
 2160
 2161
 2162
 2163
 2164
 2165
 2166
 2167
 2168
 2169
 2170
 2171
 2172
 2173
 2174
 2175
 2176
 2177
 2178
 2179
 2180
 2181
 2182
 2183
 2184
 2185
 2186
 2187
 2188
 2189
 2190
 2191
 2192
 2193
 2194
 2195
 2196
 2197
 2198
 2199
 2200
 2201
 2202
 2203
 2204
 2205
 2206
 2207
 2208
 2209
 2210
 2211
 2212
 2213
 2214
 2215
 2216
 2217
 2218
 2219
 2220
 2221
 2222
 2223
 2224
 2225
 2226
 2227
 2228
 2229
 2230
 2231
 2232
 2233
 2234
 2235
 2236
 2237
 2238
 2239
 2240
 2241
 2242
 2243
 2244
 2245
 2246
 2247
 2248
 2249
 2250
 2251
 2252
 2253
 2254
 2255
 2256
 2257
 2258
 2259
 2260
 2261
 2262
 2263
 2264
 2265
 2266
 2267
 2268
 2269
 2270
 2271
 2272
 2273
 2274
 2275
 2276
 2277
 2278
 2279
 2280
 2281
 2282
 2283
 2284
 2285
 2286
 2287
 2288
 2289
 2290
 2291
 2292
 2293
 2294
 2295
 2296
 2297
 2298
 2299
 2300
 2301
 2302
 2303
 2304
 2305
 2306
 2307
 2308
 2309
 2310
 2311
 2312
 2313
 2314
 2315
 2316
 2317
 2318
 2319
 2320
 2321
 2322
 2323
 2324
 2325
 2326
 2327
 2328
 2329
 2330
 2331
 2332
 2333
 2334
 2335
 2336
 2337
 2338
 2339
 2340
 2341
 2342
 2343
 2344
 2345
 2346
 2347
 2348
 2349
 2350
 2351
 2352
 2353
 2354
 2355
 2356
 2357
 2358
 2359
 2360
 2361
 2362
 2363
 2364
 2365
 2366
 2367
 2368
 2369
 2370
 2371
 2372
 2373
 2374
 2375
 2376
 2377
 2378
 2379
 2380
 2381
 2382
 2383
 2384
 2385
 2386
 2387
 2388
 2389
 2390
 2391
 2392
 2393
 2394
 2395
 2396
 2397
 2398
 2399
 2400
 2401
 2402
 2403
 2404
 2405
 2406
 2407
 2408
 2409
 2410
 2411
 2412
 2413
 2414
 2415
 2416
 2417
 2418
 2419
 2420
 2421
 2422
 2423
 2424
 2425
 2426
 2427
 2428
 2429
 2430
 2431
 2432
 2433
 2434
 2435
 2436
 2437
 2438
 2439
 2440
 2441
 2442
 2443
 2444
 2445
 2446
 2447
 2448
 2449
 2450
 2451
 2452
 2453
 2454
 2455
 2456
 2457
 2458
 2459
 2460
 2461
 2462
 2463
 2464
 2465
 2466
 2467
 2468
 2469
 2470
 2471
 2472
 2473
 2474
 2475
 2476
 2477
 2478
 2479
 2480
 2481
 2482
 2483
 2484
 2485
 2486
 2487
 2488
 2489
 2490
 2491
 2492
 2493
 2494
 2495
 2496
 2497
 2498
 2499
 2500

Handwritten text in Hebrew script, arranged in vertical columns on the left page of the manuscript.

Handwritten text in Hebrew script, arranged in vertical columns on the right page of the manuscript.

Handwritten text in Hebrew script, centered below the main columns of text on the right page.

Handwritten text in Hebrew script, positioned above the large block of text on the right page.

Large block of handwritten text in Hebrew script, occupying the lower half of the right page.

Vertical handwritten text in Hebrew script along the right edge of the manuscript, likely serving as a marginal note or commentary.

1780

Handwritten text in a cursive script, likely a medieval manuscript. The text is densely packed and spans approximately 20 lines. It features various ligatures and decorative initials, characteristic of Gothic or similar medieval handwriting. The ink is dark, and the parchment shows signs of age and wear. The text is written in a single column, with some lines starting with larger, more ornate initials. The overall appearance is that of a historical document or a page from a religious or legal text.

Handwritten text at the top of the page, possibly a title or header, written in a cursive script.

Main body of handwritten text, consisting of several lines of dense script with various annotations and symbols.

Lower section of handwritten text, continuing the main body with similar script and annotations.

4
1
2
3
4
5
6
7
8
9
10
11
12
13
14
15
16
17
18
19
20
21
22
23
24
25
26
27
28
29
30
31
32
33
34
35
36
37
38
39
40
41
42
43
44
45
46
47
48
49
50
51
52
53
54
55
56
57
58
59
60
61
62
63
64
65
66
67
68
69
70
71
72
73
74
75
76
77
78
79
80
81
82
83
84
85
86
87
88
89
90
91
92
93
94
95
96
97
98
99
100

|| *Handwritten text at the top of the page.*

Main body of handwritten text, including several large decorated initials.

Handwritten text in a cursive script, likely a historical document or manuscript. The text is densely packed and spans the entire page, with some lines appearing to be headings or section markers. The script is highly stylized and difficult to decipher without specialized knowledge of the language and dialect. The document appears to be a record or a list of items, possibly related to a military or administrative context, given the use of terms like "regiment" and "company" in some of the legible fragments.

1. Die erste...
 2. Die zweite...
 3. Die dritte...
 4. Die vierte...
 5. Die fünfte...
 6. Die sechste...
 7. Die siebente...
 8. Die achte...
 9. Die neunte...
 10. Die zehnte...
 11. Die elfte...
 12. Die zwölfte...
 13. Die dreizehnte...
 14. Die vierzehnte...
 15. Die fünfzehnte...
 16. Die sechzehnte...
 17. Die siebenzehnte...
 18. Die achtzehnte...
 19. Die neunzehnte...
 20. Die zwanzigste...

Handwritten text in a cursive script, likely a historical document or manuscript. The text is written in a dark ink on aged, yellowish paper. It consists of approximately 15 lines of text, with some lines starting with large, decorative initials. The script is dense and difficult to decipher without specialized knowledge of the language and script. The text appears to be a formal document, possibly a contract or a record of a transaction, given the structured nature of the lines and the use of initials. The paper shows signs of age, including some staining and discoloration, particularly towards the bottom and right edges.

Handwritten text in a cursive script, likely a historical document or manuscript. The text is densely packed and spans the entire page, with some lines appearing to be crossed out or heavily corrected. The script is characteristic of early modern European handwriting, possibly from the 16th or 17th century. The document is written on aged, yellowed paper with some staining and wear, particularly along the left edge. The text is organized into approximately 15 horizontal lines, with some lines containing multiple columns of writing. The overall appearance is that of a well-used, possibly legal or administrative, record.

1. 2. 3. 4. 5. 6. 7. 8. 9. 10. 11. 12. 13. 14. 15. 16. 17. 18. 19. 20. 21. 22. 23. 24. 25. 26. 27. 28. 29. 30. 31. 32. 33. 34. 35. 36. 37. 38. 39. 40. 41. 42. 43. 44. 45. 46. 47. 48. 49. 50. 51. 52. 53. 54. 55. 56. 57. 58. 59. 60. 61. 62. 63. 64. 65. 66. 67. 68. 69. 70. 71. 72. 73. 74. 75. 76. 77. 78. 79. 80. 81. 82. 83. 84. 85. 86. 87. 88. 89. 90. 91. 92. 93. 94. 95. 96. 97. 98. 99. 100. 101. 102. 103. 104. 105. 106. 107. 108. 109. 110. 111. 112. 113. 114. 115. 116. 117. 118. 119. 120. 121. 122. 123. 124. 125. 126. 127. 128. 129. 130. 131. 132. 133. 134. 135. 136. 137. 138. 139. 140. 141. 142. 143. 144. 145. 146. 147. 148. 149. 150. 151. 152. 153. 154. 155. 156. 157. 158. 159. 160. 161. 162. 163. 164. 165. 166. 167. 168. 169. 170. 171. 172. 173. 174. 175. 176. 177. 178. 179. 180. 181. 182. 183. 184. 185. 186. 187. 188. 189. 190. 191. 192. 193. 194. 195. 196. 197. 198. 199. 200. 201. 202. 203. 204. 205. 206. 207. 208. 209. 210. 211. 212. 213. 214. 215. 216. 217. 218. 219. 220. 221. 222. 223. 224. 225. 226. 227. 228. 229. 230. 231. 232. 233. 234. 235. 236. 237. 238. 239. 240. 241. 242. 243. 244. 245. 246. 247. 248. 249. 250. 251. 252. 253. 254. 255. 256. 257. 258. 259. 260. 261. 262. 263. 264. 265. 266. 267. 268. 269. 270. 271. 272. 273. 274. 275. 276. 277. 278. 279. 280. 281. 282. 283. 284. 285. 286. 287. 288. 289. 290. 291. 292. 293. 294. 295. 296. 297. 298. 299. 300. 301. 302. 303. 304. 305. 306. 307. 308. 309. 310. 311. 312. 313. 314. 315. 316. 317. 318. 319. 320. 321. 322. 323. 324. 325. 326. 327. 328. 329. 330. 331. 332. 333. 334. 335. 336. 337. 338. 339. 340. 341. 342. 343. 344. 345. 346. 347. 348. 349. 350. 351. 352. 353. 354. 355. 356. 357. 358. 359. 360. 361. 362. 363. 364. 365. 366. 367. 368. 369. 370. 371. 372. 373. 374. 375. 376. 377. 378. 379. 380. 381. 382. 383. 384. 385. 386. 387. 388. 389. 390. 391. 392. 393. 394. 395. 396. 397. 398. 399. 400. 401. 402. 403. 404. 405. 406. 407. 408. 409. 410. 411. 412. 413. 414. 415. 416. 417. 418. 419. 420. 421. 422. 423. 424. 425. 426. 427. 428. 429. 430. 431. 432. 433. 434. 435. 436. 437. 438. 439. 440. 441. 442. 443. 444. 445. 446. 447. 448. 449. 450. 451. 452. 453. 454. 455. 456. 457. 458. 459. 460. 461. 462. 463. 464. 465. 466. 467. 468. 469. 470. 471. 472. 473. 474. 475. 476. 477. 478. 479. 480. 481. 482. 483. 484. 485. 486. 487. 488. 489. 490. 491. 492. 493. 494. 495. 496. 497. 498. 499. 500. 501. 502. 503. 504. 505. 506. 507. 508. 509. 510. 511. 512. 513. 514. 515. 516. 517. 518. 519. 520. 521. 522. 523. 524. 525. 526. 527. 528. 529. 530. 531. 532. 533. 534. 535. 536. 537. 538. 539. 540. 541. 542. 543. 544. 545. 546. 547. 548. 549. 550. 551. 552. 553. 554. 555. 556. 557. 558. 559. 560. 561. 562. 563. 564. 565. 566. 567. 568. 569. 570. 571. 572. 573. 574. 575. 576. 577. 578. 579. 580. 581. 582. 583. 584. 585. 586. 587. 588. 589. 590. 591. 592. 593. 594. 595. 596. 597. 598. 599. 600. 601. 602. 603. 604. 605. 606. 607. 608. 609. 610. 611. 612. 613. 614. 615. 616. 617. 618. 619. 620. 621. 622. 623. 624. 625. 626. 627. 628. 629. 630. 631. 632. 633. 634. 635. 636. 637. 638. 639. 640. 641. 642. 643. 644. 645. 646. 647. 648. 649. 650. 651. 652. 653. 654. 655. 656. 657. 658. 659. 660. 661. 662. 663. 664. 665. 666. 667. 668. 669. 670. 671. 672. 673. 674. 675. 676. 677. 678. 679. 680. 681. 682. 683. 684. 685. 686. 687. 688. 689. 690. 691. 692. 693. 694. 695. 696. 697. 698. 699. 700. 701. 702. 703. 704. 705. 706. 707. 708. 709. 710. 711. 712. 713. 714. 715. 716. 717. 718. 719. 720. 721. 722. 723. 724. 725. 726. 727. 728. 729. 730. 731. 732. 733. 734. 735. 736. 737. 738. 739. 740. 741. 742. 743. 744. 745. 746. 747. 748. 749. 750. 751. 752. 753. 754. 755. 756. 757. 758. 759. 760. 761. 762. 763. 764. 765. 766. 767. 768. 769. 770. 771. 772. 773. 774. 775. 776. 777. 778. 779. 780. 781. 782. 783. 784. 785. 786. 787. 788. 789. 790. 791. 792. 793. 794. 795. 796. 797. 798. 799. 800. 801. 802. 803. 804. 805. 806. 807. 808. 809. 810. 811. 812. 813. 814. 815. 816. 817. 818. 819. 820. 821. 822. 823. 824. 825. 826. 827. 828. 829. 830. 831. 832. 833. 834. 835. 836. 837. 838. 839. 840. 841. 842. 843. 844. 845. 846. 847. 848. 849. 850. 851. 852. 853. 854. 855. 856. 857. 858. 859. 860. 861. 862. 863. 864. 865. 866. 867. 868. 869. 870. 871. 872. 873. 874. 875. 876. 877. 878. 879. 880. 881. 882. 883. 884. 885. 886. 887. 888. 889. 890. 891. 892. 893. 894. 895. 896. 897. 898. 899. 900. 901. 902. 903. 904. 905. 906. 907. 908. 909. 910. 911. 912. 913. 914. 915. 916. 917. 918. 919. 920. 921. 922. 923. 924. 925. 926. 927. 928. 929. 930. 931. 932. 933. 934. 935. 936. 937. 938. 939. 940. 941. 942. 943. 944. 945. 946. 947. 948. 949. 950. 951. 952. 953. 954. 955. 956. 957. 958. 959. 960. 961. 962. 963. 964. 965. 966. 967. 968. 969. 970. 971. 972. 973. 974. 975. 976. 977. 978. 979. 980. 981. 982. 983. 984. 985. 986. 987. 988. 989. 990. 991. 992. 993. 994. 995. 996. 997. 998. 999. 1000.

Handwritten text in a cursive script, likely a historical document or manuscript. The text is densely packed and spans the entire page. It appears to be written in a language that may be related to the region, possibly using a script like the Khmer or Thai script. The ink is dark, and the paper shows signs of age and wear.

Handwritten text in a cursive script, likely a historical document or manuscript, covering the majority of the page. The text is densely packed and spans from the top to the bottom of the page.

Handwritten text in a cursive script, likely a historical document or manuscript. The text is densely packed and spans the entire page. It appears to be a list or a series of entries, possibly related to a legal or administrative record. The script is highly stylized and difficult to decipher without specialized knowledge of the language and script. The text is written in dark ink on aged, yellowish paper. There are some larger, bolded letters or symbols interspersed throughout the text, which may serve as section markers or initials. The overall appearance is that of a well-used, historical document.

Handwritten text in a cursive script, likely a historical document or manuscript. The text is arranged in approximately 15 horizontal lines across the page. The script is dense and characteristic of early modern European handwriting. The paper shows signs of age, including yellowing and some staining, particularly along the left edge. The text is written in a dark ink, possibly iron gall or a similar historical ink. The overall appearance is that of a well-preserved but aged historical document.

Handwritten text in a cursive script, likely a historical document or manuscript. The text is written in a dark ink on aged, yellowish paper. It consists of approximately 15 lines of text, with some lines starting with large, decorative initial letters. The script is dense and difficult to decipher without specialized knowledge of the language or dialect. There are some faint markings and stains at the bottom of the page, possibly from water damage or age.

Handwritten text in a cursive script, likely a historical document or manuscript. The text is arranged in approximately 15 horizontal lines across the page. The script is dense and characteristic of early modern European handwriting. The paper shows signs of age, including discoloration and a prominent vertical stain or tear down the center.

The first thing I saw when I
 stepped out of the boat was
 a vast, flat expanse of water
 stretching to the horizon. The
 sky above was a pale, hazy
 blue, and the air felt warm
 and humid. I had heard that
 the climate here was perfect,
 but I didn't realize how
 true it would be. The water
 was so calm, it looked like
 a mirror reflecting the sky. I
 could see the distant shore
 where the land met the sea,
 and the sound of waves
 breaking against the rocks
 was a soothing melody. I
 had never before experienced
 such a sense of peace and
 tranquility. The sun was
 just beginning to rise, and
 the light was soft and golden.
 I felt a sense of awe and
 wonder as I took in the
 beauty of the scene. It was
 truly a sight to behold. I
 had come here for a vacation,
 and I was in luck. This was
 exactly what I needed. I
 was going to enjoy every
 minute of it.

Handwritten text in a cursive script, likely a historical document or manuscript. The text is written in a dark ink on aged, yellowish paper. The script is dense and fills most of the page, with some lines starting with large, decorative initials. The text is written in a cursive script, likely a historical document or manuscript. The text is dense and fills most of the page, with some lines starting with large, decorative initials. The text is written in a cursive script, likely a historical document or manuscript. The text is dense and fills most of the page, with some lines starting with large, decorative initials.

MADEIRA COLLECTION
30 APR. 1823
PRIVY

[The page contains approximately 20 lines of handwritten text in a cursive script, which is mirrored across the page. The text is largely illegible due to the angle and fading.]

COM
[A circular stamp or seal, partially obscured, located at the bottom right of the page.]

B

MSS

JAV

58

MSS

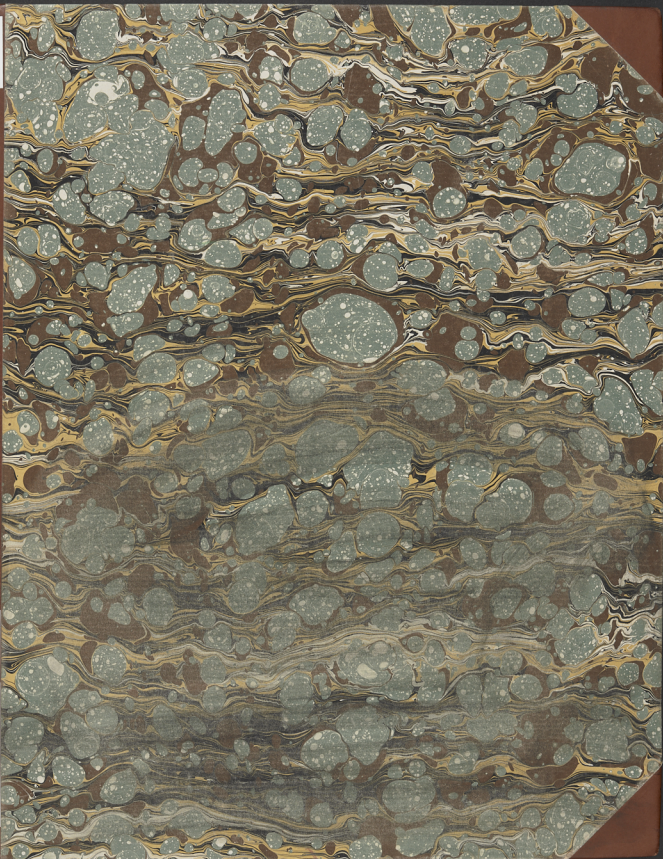
JAV

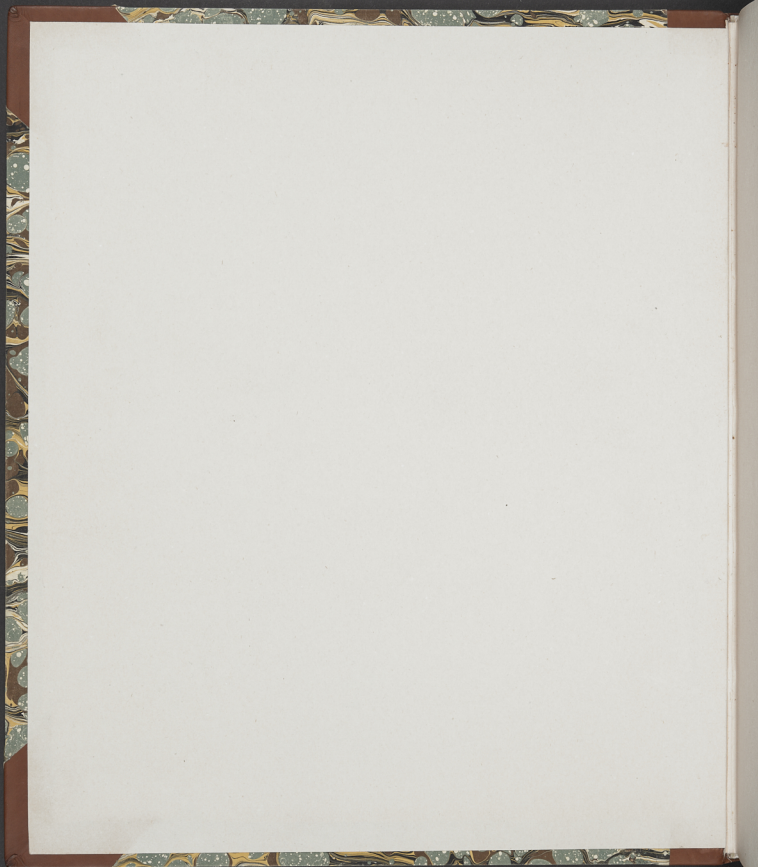
62

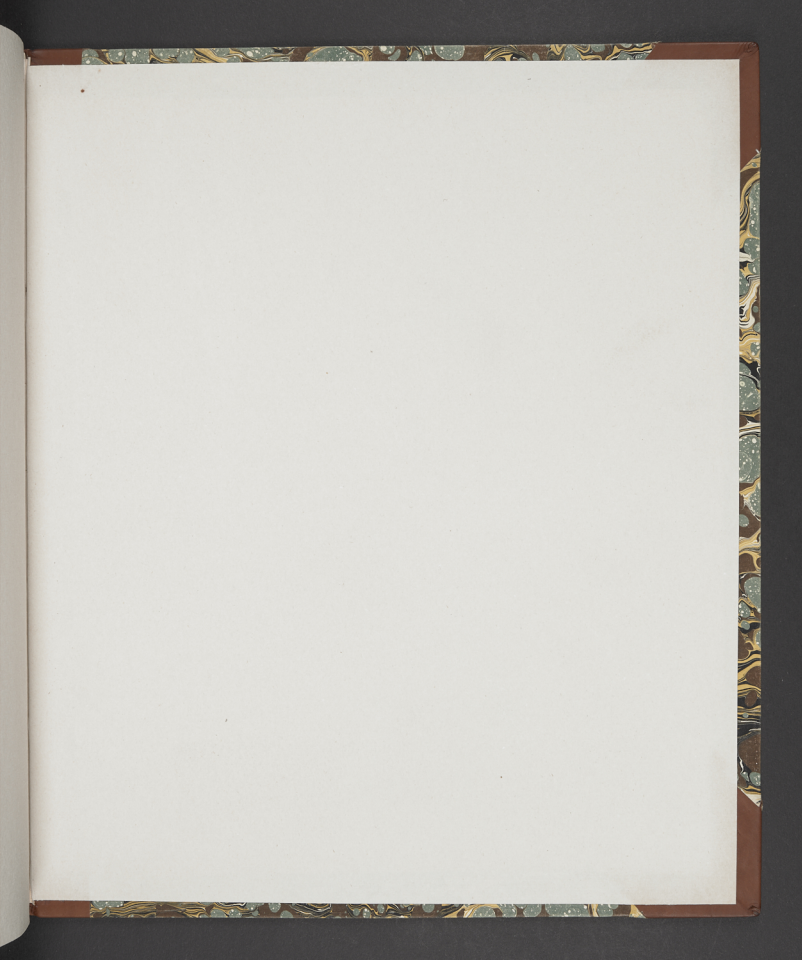
MSS

JAV

65









JAVANESE

BRITISH
LIBRARY

1.0.L.

MSS.

JAV. 58.

62, 65

