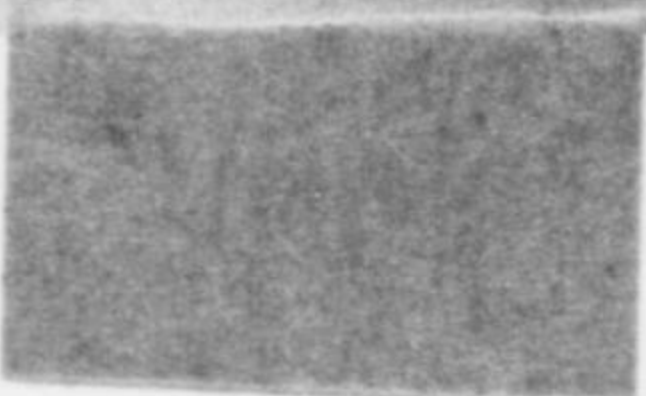


No. 2465



Excerpt from PEARL HARBOR ATTACK
 (United States Government Printing Office--Washington: 1946)

Vol. 14

Pages 1413-1416

Exhibit no. 41

Information from Documentary Evidence on Messages No.
 D 901, 902, 907, 910

Note: Information based on documents in Navy files indicated by "(N)"; information based on documents in Army files indicated by "(A)".

No. 901 (pilot message; Exhibit 1, p. 238)

	<u>Washington Time</u>
Filed by the Japanese 8:56 p.m. 6 Dec. Tokyo time (A&N)	6:56 a.m. 6 Dec
Intercepted in Japanese code by Navy Station S (Bainbridge Island, Washington) 1215-1220 GMT 6 Dec (N)	7:15-7:20 a.m. 6 Dec
Teletype sheet containing Japanese code received by Army SIS from Navy (A)	12:05 p.m. 6 Dec
Decoded, translated and typed at Army SIS (A)	6 Dec

No. 902 (14 part memo; Exhibit 1, pp. 339-45)

Part 1

Filed by the Japanese 10:00 p.m. 6 Dec Tokyo time (N)	8:00 a.m. 6 Dec
Intercepted in Japanese code by Navy Station S (Bainbridge Island, Washington) 1303-1310 GMT 6 Dec (N)	8:03-8:10 a.m. 6 Dec
Received in Japanese code in Navy Dept. 1649 GMT 6 Dec (N)	11:49 a.m. 6 Dec
Decoded ¹ and typed up at Navy (N)	6 Dec

¹ All parts of this message were in English, so that translation was not required

.

Part 13

Filed by the Japanese 1:25 a.m. 7 Dec Tokyo time (N)	11:25 a.m. 6 Dec
Intercepted in Japanese code by Navy Station S, 1635-1652 GMT 6 Dec (N)	11:35-11:52 a.m. 6 Dec
Teletyped in Japanese code to Navy (N)	
Received in Japanese code by Navy Dept. 1951 GMT 6 Dec (N)	2:51 p.m. 6 Dec
Decoded and typed by Navy	6 Dec

Part 14

Filed by the Japanese 4:38 p.m. 7 Dec Tokyo time (N)	2:38 a.m. 7 Dec
Intercepted in Japanese code by Navy Station S, 0805-0810 GMT 7 Dec (N)	3:05-3:10 a.m. 7 Dec
Teletyped in Japanese code to Navy (N)	
Decoded and typed by Navy (N)	7 Dec

No. 907 (one o'clock message; p. 248 Exhibit 1)

	<u>Washington Time</u>
Filed by the Japanese 6:18 p.m. 7 Dec. Tokyo time (N)	4:18 a.m. 7 Dec
Intercepted in Japanese code by Navy Station S (Bainbridge Island, Washington) 0937 GMT 7 Dec (N)	4:37 a.m. 7 Dec
Teletyped in Japanese code to Navy (A) Decoded by Navy (A) Sent by Navy to Army SIS Translated and typed by Army SIS on basis of Navy decode (A)	7 Dec

No. 910 (code destruction; p. 249 Exhibit 1)

Filed by the Japanese 6:44 p.m. 7 Dec Tokyo time (N&A)	4:44 a.m. 7 Dec
Intercepted in Japanese code by Navy Station S (Bainbridge Island, Washington) 1007 GMT 7 Dec (N)	5:07 a.m. 7 Dec
Teletyped in Japanese code to Navy (A) Decoded by Navy (A) Sent by Navy to Army SIS Translated and typed by Army SIS on basis of Navy decode (A)	7 Dec