

SALIDA NORMALIZADA VUELO POR INSTRUMENTOS
STANDARD INSTRUMENT DEPARTURE

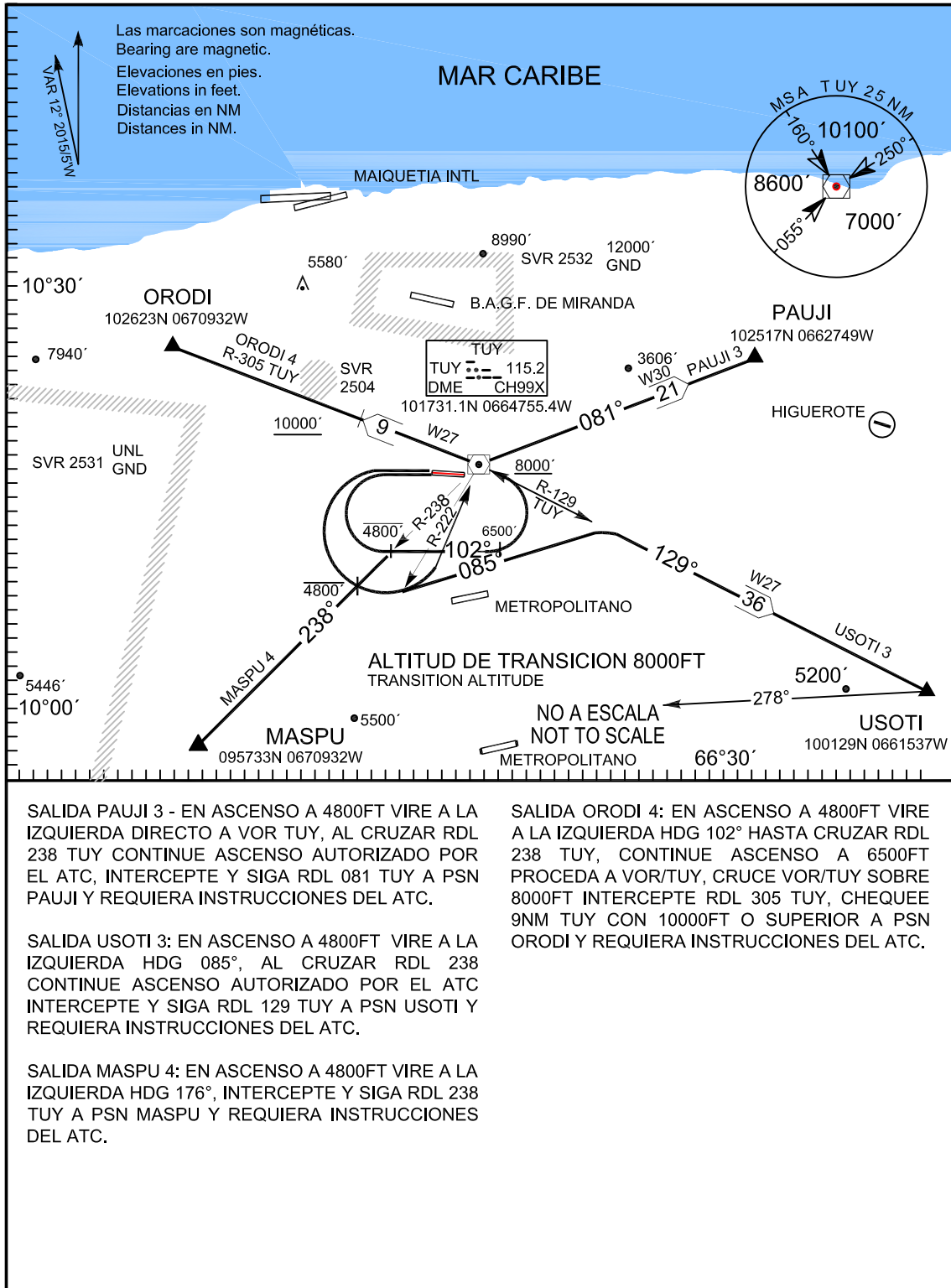
APP	119.20
TWR	118.00, 121.50
SMC	121.70
AUTH	122.10

CARACAS/INTL
Oscar Machado Zuloaga

SID

ELEV 2141FT

SID RWY 28



LEGEND

PAUJI 3 DEPARTURE: IN ASCENT TO 4800FT TURN LEFT DIRECT TO TUY VOR, CROSS RDL-238 TUY CONTINUE ASCENT CLEARED BY ATC, INTERCEPT AND FOLLOW RDL-081 TUY TO PSN PAUJI AND REQUEST ATC INSTRUCTIONS.

USOTI 3 DEPARTURE: IN ASCENT TO 4800FT TURN LEFT HDG 085° CROSS RDL-238 CONTINUE ASCENT CLEARED BY ATC, INTERCEPT AND FOLLOW RDL-129 TUY TO PSN USOTI AND REQUEST ATC INSTRUCTIONS.

MASPU 4 DEPARTURE: CLIMBING TO 4800FT TURN LEFT HDG 176°, INTERCEPT AND FOLLOW RDL-238 TUY TO PSN MASPU, AND REQUEST ATC INSTRUCTIONS.

ORODI 4 DEPARTURE: IN ASCENT TO 4800FT TURN LEFT HDG 102°, CROSS RDL-238 TUY, CONTINUE CLIBING TO 6500FT TO TUY VOT, CROSS TUY VOR AT OR ABOVE 8000FT, INTERCEPT RDL- 305 TUY CHECK 9 NM TUY WITH 10000FT OR UPPER TO PSN ORODI AND REQUEST ATC INSTRUCTIONS.