

F

129

.A3A46





Class _____ F 129

Book _____ A 3 A 46





Albany

New York



LOOKING EAST FROM THE CAPITOL STEPS

A beautiful and attractive city in which to live
A most advantageous city in which to do business

Published by the Albany Chamber of Commerce



THE KING FOUNTAIN — MOSES SMITING THE ROCK — WASHINGTON PARK



THE BURNS STATUE — WASHINGTON PARK



A VIEW FROM THE CAPITOL



LOOKING UP BROADWAY FROM STATE STREET



LOOKING UP STATE AND NORTH PEARL STREETS

Albany at a Glance

Geographical

Albany, being situated at the head of tidewater of the Hudson River, and at the eastern terminus of the Erie Canal, is naturally as well as artificially the center of a great, growing and prosperous section. Within two hundred miles of the Capitol, one-third of the population of the United States is located; and here converge not only the river lines, nine in all, whose passenger steamers make thirty-six trips out of Albany daily, but also six steam railroads, with one hundred and fifty passenger and over two hundred and fifty freight trains each day, while a network of well-equipped, interconnecting trolley lines, both within the city and to suburban points, rounds out the city's many geographical advantages.



STATE NORMAL COLLEGE



PUBLIC BATH No. 3 — Exterior,



PUBLIC BATH No. 1

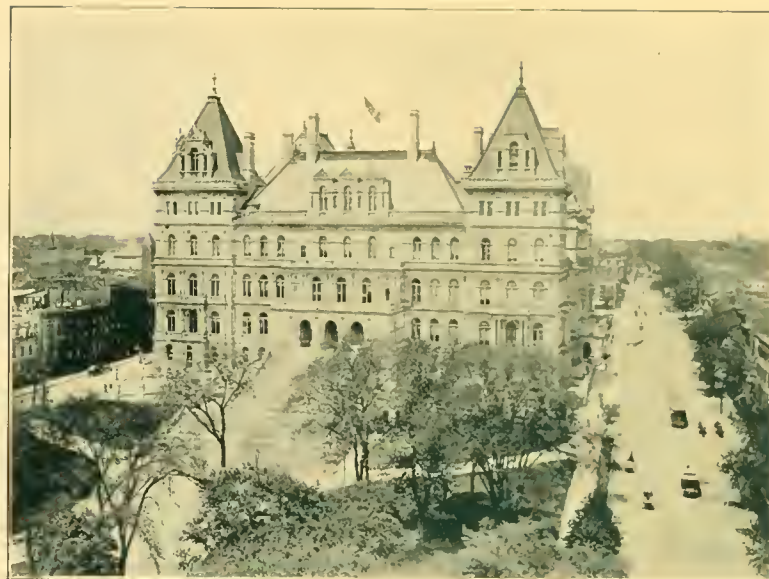


PUBLIC BATH No. 3 — Swimming Pool

Architectural The architectural growth and development of Albany have been such that to-day its public and semi-public buildings may successfully challenge comparison with those of other cities in any part of the country. Column upon column of description, by writers from all over the world, have made the great State Capitol famous, and caused it to be the first building sought by most visitors to Albany. But, if less widely known, the architectural style of



THE CAPITOL — EASTERN APPROACH



THE CAPITOL

the City Hall is admirable for its simple, classic beauty. To these and other public buildings will soon be added a long-needed State Educational Library building, attractive in design and thoroughly adapted to its purposes. The many new semi-public buildings, banking offices, private residences and modern apartment houses have so transformed the ancient city in which Dutch traditions lingered even a decade ago, that the metamorphosis is little less than startling. The "entrance gate" — the new Union Depot, a model of attractive and convenient



THE CAPITOL—THE GREAT
WESTERN STAIRCASE



VIEW IN WASHINGTON PARK



THE CAPITOL—THE GREAT WESTERN
STAIRCASE

up-to-date railway facilities, might not inaptly be termed the gateway to Albany in the architectural sense, as well.

Educational, Civic and Religious Albany is justly proud of her standing as an educational center. Not only in her public school system has she long been pre-eminent, but no less than twenty-six colleges and private schools are here located. Among those of far more than local fame are the State Normal College, Albany Law School, the alma mater of President McKinley and other great men; Albany Medical College, the Albany Boys'



THE DUDLEY OBSERVATORY



ST. PETER'S
CHURCH

CHAMBER OF
COMMERCE

ALBANY COUNTY
BUILDING

Academy, where Joseph Henry first demonstrated the practical use of the magnetic telegraph; the Albany Academy for Girls, the oldest school exclusively for the education of girls in the world; Albany Business College, Academy of the Sacred Heart and St. Agnes School. Incidental to educational and scientific research, there is the Dudley Observatory, with its director, Prof. Lewis Boss, a well-known astronomical authority, and there are twelve available libraries, of which the State library is second to but few in the world. On the religious side, Albany is most



ST. PETER'S CHURCH



TEMPLE BETH EMETH

fortunate in having seventy-six fine church edifices (including two cathedrals) where, as has been the case ever since the days of Dominie Megapolensis, able and devout men of scholarship and reputation occupy the pulpits. Albany has four daily newspapers, of which some have a national reputation. The city is supplied with an abundance of pure drinking water from a large filtration plant. There are over eighty-seven miles of paved streets and nearly a hundred miles of sewers. There are seventeen parks, comprising over three hundred and six acres; the most pretentious of these, Washington Park, is unsurpassed in



THE RAILROAD STATION



THE STATE ARMORY

any city of the approximate size of Albany. In this park are to be seen the statue of Robert Burns, and the King fountain — "Moses smiting the rock." In connection with the park system, there are ninety-five acres of boulevards under park care. Albany has five excellent hospitals; the fraternal organizations are exceptionally strong and representative in their memberships; there are forty-two social clubs, and, as might be expected from the antiquity of the place, there are numerous patriotic-hereditary societies, based on revolutionary and colonial descent.



CATHEDRAL OF ALL SAINTS



CATHEDRAL OF THE IMMACULATE CONCEPTION



THE LAKE HOUSE — WASHINGTON PARK



THE LOTUS BEDS—WASHINGTON PARK



THE LAKE—WASHINGTON PARK

Commercial Albany has long boasted a municipal credit and market value for her bonds and securities unsurpassed by most and equalled by but few cities. Albany's banks and financial institutions, comprising five banks of discount, two trust companies, and seven savings banks, are far-renowned for enterprise, coupled with caution and good judgment; so that "as sound as a bank of Albany" might appropriately be substituted for the familiar saying as to the Bank of England.



THE ALBANY ACADEMY



THE HIGH SCHOOL



ALBANY MEDICAL COLLEGE



ALBANY ACADEMY FOR GIRLS



ST. AGNES SCHOOL



ACADEMY OF THE HOLY NAMES

Climatic Albany's situation is such that the city is rarely subjected to extremes, either of heat or of cold.

Historical and Political Albany is the oldest settled city in the United States; was organized in 1686, and has been the Capital of New York State since 1797. In peace and in war, in sunshine and in storm, this ancient city has made history, taking part in the greatest events, from times pre-revolutionary, and giving her distinguished sons to



LOOKING UP STATE STREET



THE EXECUTIVE MANSION

high places in the councils alike of State and Nation, as well as to bear the sword in defense of our institutions. The very soil here is reminiscent of great and valiant deeds; so that it might well be said, in the words of Holy Writ: "Put off thy shoes from off thy feet; for the place whereon thou standest is holy ground."

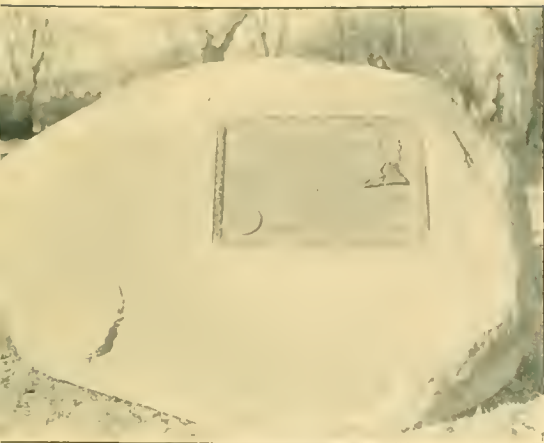




ALBANY AS SEEN FROM



THE HUDSON RIVER



WILLETT MEMORIAL



THE PUBLIC MARKET



IN WASHINGTON PARK



ALBANY INSTITUTE AND HISTORICAL AND
ART SOCIETY—FRONT VIEW



ALBANY INSTITUTE AND HISTORICAL AND
ART SOCIETY—SIDE VIEW



THE CENTRAL YOUNG MEN'S CHRISTIAN
ASSOCIATION



THE YOUNG WOMEN'S CHRISTIAN ASSOCIATION



THE PRUYN LIBRARY



LAKE AND BRIDGE—WASHINGTON PARK



STATE EDUCATIONAL BUILDING (In course of construction)



ALBANY FIRE DEPARTMENT — STEAMER No. 5



ALBANY FIRE DEPARTMENT—STEAMER HOUSE No. 10



ALBANY EXCHANGE
SAVINGS BANK



NATIONAL COMMERCIAL BANK



ALBANY SAVINGS BANK



ALBANY CITY SAVINGS
INSTITUTION



NEW YORK STATE NATIONAL BANK

Original building erected 1803. The oldest building in the United States used continuously for banking purposes



FIRST NATIONAL BANK



HOME SAVINGS BANK



NATIONAL SAVINGS BANK



ALBANY COUNTY BANK
AND
ALBANY COUNTY SAVINGS BANK



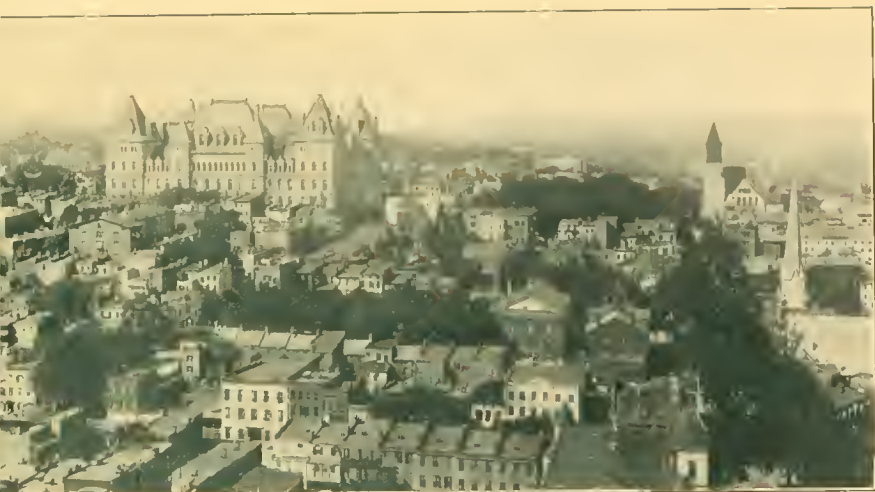
ALBANY TRUST COMPANY



MECHANICS AND FARMERS BANK
AND
MECHANICS AND FARMERS SAVINGS BANK



UNION TRUST COMPANY



OVER THE HOUSETOPS



PUBLIC SCHOOL No. 12



RAILROAD YOUNG MEN'S CHRISTIAN
ASSOCIATION — WEST ALBANY



OVER THE HOUSETOPS



FIRST REFORMED CHURCH—ERECTED IN 1799



THE SCHUYLER MANSION—ERECTED IN 1760-61



VAN RENSSELAER MANOR HOUSE—OFFICE BUILDING
ERECTED IN 1666



ALBANY CITY HOSPITAL



THE SMALLPOX HOSPITAL



THE CONTAGIOUS DISEASE HOSPITAL



THE HOMEOPATHIC HOSPITAL OF ALBANY, N. Y.



ST. PETER'S HOSPITAL



STAINED GLASS WINDOW IN ROOMS OF THE
ALBANY CHAMBER OF COMMERCE

At the top is the seal of the Chamber of Commerce, at the bottom the Coat of Arms of the City of Albany, and in the center the Half Moon.



THE MANNING BOULEVARD



ODD FELLOWS TEMPLE



MASONIC TEMPLE



BEAVER PARK



BEAVER PARK



ALBANY ORPHAN ASYLUM BUILDINGS



The Secretary of the Albany Chamber of Commerce will be pleased to answer any inquiries which may be made in regard to Albany, and to give any special information that may be desired







LIBRARY OF CONGRESS



0 014 109 059 8

