

Historic, Archive Document

Do not assume content reflects current scientific knowledge, policies, or practices.

62.27

1930

Henry Field

Announcing-

APR



OVER KFNF HENRY FIELD SEED CO.
SHENANDOAH, IOWA

Nursery Specials



Mastadon Strawberries

Strong, Vigorous, Young Plants
 200 for.....\$5.00
 100 for..... 2.75
 50 for..... 1.50
 25 for..... 1.00

Postpaid



The Lily Pool at Our Sleepy Hollow Farm

This picture was taken about the middle of May to show how our regular 2 year old grade of Spirea Van Houtii will look after it has had one season's growth. We can supply you with fine 2 year old plants at \$2.00 per dozen, postpaid.



Old fashioned Snow Ball bush, planted three years. Husky young plants at 2 for \$1.00 postpaid.



Lady Hillingdon Rose, four months after planting. See our Spring Catalog for variety list. 3 for \$1.00 postpaid.



Syringa Coronarius (Mock Orange). This bush is about ten years old, and shows you what a mature bush will look like. Two year old plants are 4 for \$1.25.



The smaller ones are one year old fruit trees and the larger ones two years. See Spring Catalog for prices.



72 Gladiola **75c**
 Blooming Size Postpaid

Long graceful spikes and wide open flowers of Primilinus Variety. Guaranteed to bloom. Use with Delphinium, Cosmos, Gypsophila, or any good cut flower



Ruth Field, picking Improved Early Shasta Daisies. Absolutely hardy here, long stemmed, free blooming. This picture taken May 20th. Plant in early spring. Price, 5 clumps for \$1.00, postpaid.

FIELD'S SEED SENSE

Printed and Published in the Private Printshop of the Henry Field Seed Company, Shenandoah, Iowa.

Vol. 18

Shenandoah, Iowa. March, 1930

No. 1



A New Picture of the Field Family

Yes, this is all that is left at home now of the Field bunch. There are five more of the children but they are married and living elsewhere - Faith, Hope and Philip in California, Josephine in Buffalo, and Jessie in Chicago. The ones in the picture, starting next to Mrs. Field, are Mary, Ruth, Georgia, Letty, Frank, and John Henry. Frank is 35, is married and lives here in town and works at the seed house. The rest are all at home. Mary is 21 and works at the seed house. Ruth is 17 and will graduate in high school this year, Georgia is 15 and is a sophomore, John Henry is 13 and is in Junior High, Letty is 11 and in the 5th grade.

They are a husky, healthy, happy bunch, as you can see by the picture. They are mighty good children, but a bunch like this is a great responsibility.

This picture was taken in our greenhouse on the roof of the arcade. Pretty place. Go up and see it when you come to the Seed House.

Of course you recognize Mrs. Field and myself as you have seen our picture so often.

We all have plenty to do, and three or four meals

a day, and having a lot of fun as we go along.

Come and see us some day. Most everybody does. More came here last year than went to the State Fair. Over 600,000. That's lots of folks. They all had a good time, too. Better come and get a cabin and stay a week. Lots of them do. Fine vacation.

But better get busy on that order now. Spring is here and time you were planting, and fixing up the lawn and flower beds, and fixing the fences and the chicken yard, and painting the house and the rest of the buildings. You'll never have a better time, but you'll have to get busy.

If we can help you in any way, just let us know. We'll be glad to do all we can to help you.

Read this Seed Sense through. I've been writing it for 18 years, and I hope you have had some pleasure from it. I've wasted a lot of work if you haven't.

And get out your catalog and read that through again. And come and see us. I've been right here for 58 years now and expect to be here a long time yet.

Henry Field.

Index

Alfalfa	8	Cans	22	Furs	4	Poultry	11	Sudan	9
Auto Supplies	25	Can Sealers	22	Glads	3	Pressure Cooker	22	Suits	12
Awnings	25	Chains	25	Glass Fabric	7	Radio Tubes	32	Sweaters	13
Batteries, "A"	25	Clover	8, 9	Gloves	12	Raincoats	14	Sweet William	2
Batteries, "B"	32	Cocoa	23	Hosiery	17	Roofing	28, 29	Tea	23
Batteries, Farm Light	25	Coffee	23	Jewelry	21	Rope	7	Ties	12
Bedding Plants	5	Corn	10, 11	Loud Speaker	32	Roses	17	Tires	24
Blankets	20	Curtains	20	Mattresses	20	Rubberwear	19	Toweling	17
Bug Dusts	6	Dishes	22	Overalls	13	Shirts (dress)	12	Twine	7
Canned Goods	23	Dresses	17	Overcoats	12	Shirts (work)	13	Underwear	14, 15
		Dried Fruit	23	Overshoes	19	Shoes	18, 19	Vegetable seed	
		Fencing	30, 31	Paint	26, 27	Socks	13	Wallpaper	opp. pg. 16
		Field Seed	8, 9	Peanut Butter	23	Soy Beans	9	Wool	4
		Flash Lights	25	Potatoes	16	Strawberries	4		

Prices in this catalog are subject to change without notice.



Frank Kehr, Villisca, Iowa sent us this picture of his hounds and the wolf he caught. And Frank knew where to send the skin when it was ready to be sold. Our service of finding fur buyers and boosting prices as much as possible has pleased thousands of hunters and trappers for the past 3 years.

Folks who have wool to clip this season are planning on using our service on it, too. We are out to find the highest prices for your wool.

Send for our idea of the Wool Market before you sell. I think we can probably find you a better deal than you can find for yourself. Anyway, we are sure going to try and you're welcome to any service we can give you.

Red Sweet William Double and Everblooming

I want to remind you again about one of our new perennials, which is going to make the most decided hit of anything we have introduced in recent years. It is the double, red, ever-blooming Sweet William. It resembles closely the old-fashioned, hardy Sweet William, except that the flowers are a deep, dark red and it is in constant bloom from spring until fall. The price strangely enough is the same as on all the other perennials, as we raised a tremendous lot of them last summer. 25¢ each; 5 for \$1.00, postpaid. Better buy \$1.00 worth.



This picture was sent in by Mrs. A. R. Brothers, La Platte, Nebraska, and shows what a remarkable growth the Silver Lace Vine makes. This vine had been planted less than 5 months when this picture was taken. They are extremely good for covering lattices and trellises in the garden, like the one above, and in addition they seem to be quite hardy, coming through 30 below zero this winter. We sell them at 75¢ each or 3 for \$2.00, Postpaid.

How Many Catalogs Did You Get?

A good old customer of mine was in to see me the other day and told me that his family got 4 of our 1930 Spring Catalogs. One was addressed to his wife, one to his oldest boy, one to another boy and one to him. All were addressed to the same town. He knows it costs money to mail them so he told me about it.

I am going to ask you to do me the same favor if you will. Write me if you get more than one of these catalogs. Tell me who they were addressed to and which name they should be. Then I can take the duplicates out of our mailing lists and leave in the right name.

These duplications get in quite naturally because when different ones in the same family order from us each of their names goes on to our list. We are anxious to have every family get our catalog but we don't want to waste a single one by sending too many to one family.

So, if you got more than one this time please pass it on to your neighbor and then tell me about it so I can straighten out our lists to prevent duplication on our next catalog.

This will be a big favor to me and it will help me keep our expenses down so we can keep our prices down for you.

H. F.

A Neighboring Garden

"As for real value to our home, we cannot get along without a garden any more than farmers can get along without farm machinery.

When we first started in our home my husband, although raised on a farm, was not strongly in favor of gardening, said, "Oh, it isn't worth the hard work. Nothing much in gardens anyway."

I did not have to argue the question of gardening long until he saw things differently. He soon learned a good garden with a good supply of fresh vegetables, with variety, was not only a business proposition but a needed necessity to a home.

Some of our neighbors laughingly say "Well, we are never uneasy having vegetables for if we can't raise them we know who can, for Vaughn's always have garden enough for their neighbors."

We do not aim to plant a "neighborhood garden" just a small home garden, but like plenty of all kinds of vegetables and do not object to a surplus.

I am like my little boy when his grandmother said, "Why, Johnnie, I put too much sugar in your coffee," and Johnnie's reply was "Why, grandma, I like too much."—Mrs. A. C. Vaughn, Goss, Missouri.



Killing 2 Birds With Only 1 Stone

Mrs. O. U. Herr, Clayton, Ohio sent us the above picture of her garden and she has done something for all of you to think about. Mrs. Herr has a combination Vegetable and Flower Garden.

You can do the same. At the corners and close to the fence of your Vegetable Garden you can put in Flowers. Your garden will be pretty then as well as useful. Folks are doing this more every year and I think it is a splendid idea. Goodness knows it's better to have flowers along the fence than to have the weeds that come along uninvited.

About Your Nursery Stock

Dear Friends and Customers:—

Get your Nursery order in early; the earlier the better. We sort the orders up by states and send them out at what we consider the proper time for planting. (We are shipping to Texas and the far South practically all winter. By the first of March we are shipping to Arkansas and Oklahoma, and southern Kansas, and Southern Missouri. By the first of April we are shipping to southern Nebraska and southern Iowa, and by the first of May all orders are sent out just as soon as they are received, even North Dakota and northern Minnesota.

I don't go in much for the novelties and new things, because quite often they don't prove out to be what they are cracked up to be and nine times out of ten the older things which have been proven through years and years of all kinds of weather conditions, will turn out to be the best after all and cost you a lot less money. That is why we stick to the more common shrubs, such as the Spruces, Honeysuckles, and the Syringas, Lilacs, Snowballs, and Hydrangeas. You simply can't beat them. As Pate says, "You can't even tie them."

In conclusion let me repeat again, whether you buy your Nursery Stock of us or someone else, get your Nursery order in just as soon as possible and get it planted just as early as possible. Of course, it is needless to say that we will appreciate the orders and do our level best to fill them in such a way that you will always remain what you are now, "A satisfied Henry Field Customer."

Yours truly,

Frank Field.

Gladiola Bouquet Special

Special Collection of Assorted Glads

I am a great lover of flowers, especially the old-fashioned flowers that will grow and bloom for anyone. Flowers that will bloom without being coddled and babied too much. And there should be plenty of the kind that you can use in bouquets.

I like to see lots of flowers in the house while they are blooming. Plant enough for yourself and plenty to give away. There is nothing finer than flowers to give away.

Among the flowers that are used for bouquets there are none prettier than Gladiolus. You will find every imaginable color among them. They will last for days. They are easy to grow. They multiply fast. You couldn't ask

for anything finer than their big long spikes and showy flowers to decorate the dinner table or for the church or sick room.

There is one strain, the Primulinus, that is better than any other for mixed bouquets. Use them with Larkspur, Cosmos, Zinnias, Asters or any flowers you like. They are not only fine with other flowers but their long graceful spikes make them a splendid flower to use alone.

This strain is thrifty, disease resistant, prolific and sure to bloom. We have a big stock and are going to make a price that will enable everyone to have a bed of them. We'll never be satisfied until every customer of ours has plenty of Gladiolus.



You Can Have Them

Without a great lot of effort and very little money you can have a Bouquet like this one in your house during the entire Glad season. Not just one - but one all the time.

No. 1 Bouquet Collection \$1.00 Postpaid

Long graceful spikes and wide open flowers. Not less than 10 varieties, showing plenty of color.

50 of the largest size bulbs.

50 small bulbs, same varieties.

100 Bulblets, all colors mixed.

The three sizes packed separate.

Price, postpaid, \$1.00.

No. 2 Bouquet Collection \$1.00 Postpaid

The same range of colors as No. 1 Collection but smaller bulbs. However, all blooming size.

100 Medium size bulbs, lots of color.

100 Bulblets, all colors mixed.

Each packed separate.

Price, postpaid, \$1.00.

No. 3 Bouquet Collection \$1.00 Postpaid

The same varieties and colors as above but small "Planters." The professional grower always keeps these to grow his big bulbs from. It is what we plant. Most of them bloom for us and will for you with ordinary care. The spikes will not be as long but the flowers just as pretty.

300 Small Bulbs, all colors.

Price, postpaid, \$1.00.

Three of the above collections, alike or assorted ----- only \$2.70 Postpaid

6 - Color Gladiola Collection 1969

30 Big Blooming Size Bulbs - 95c Postpaid

5 large bulbs varying shades of Red.

5 large bulbs Purple, Lavender or Lilac.

5 large bulbs Pink shades.

5 large bulbs Orange predominating.

5 large bulbs White to White with markings.

5 large bulbs Yellow, Cream or Buff.

This 6-color collection will bring you the cream of colors in Gladiola. All are the big type of flower except 2 or 3 primulinus put in to make the collection more colorful and complete. In each of the 6 color sections we will send you from 1 to 3 separate and

distinct varieties and on most varieties and on most varieties there will be varying shades of color. To help you in planting them according to their color, the collection will come to you in 6 separate packages with each one labelled as to color.



Plant Plenty of Glads

If you don't have glads galore this year it will be your own fault. The collections on this page certainly show we are willing to do our part.

Gladiola Collection No. 1966

4 Big
Bulbs Each
of

Autumn Queen—Delicate Creamy Pink.

Edna Pella—Rich Rose Pink.

Lucetta—Beautiful White.

Mary Fennel—Lovely Lavender and Yellow.

Rose Ash—Dainty Old Rose.

Sentinel—Light Rose Pink.

All for \$1.00 Postpaid

Here are the colors so many of you are always asking about. All in one collection. All will be long graceful spikes and wide open flowers. Every

bulb will be properly labelled. 4 large blooming size bulbs of each of the 6 varieties above. And 1 extra for good measure, making 25 glorious glads for \$1.00 postpaid.

Now's the Time to Plant Strawberry Short Cake

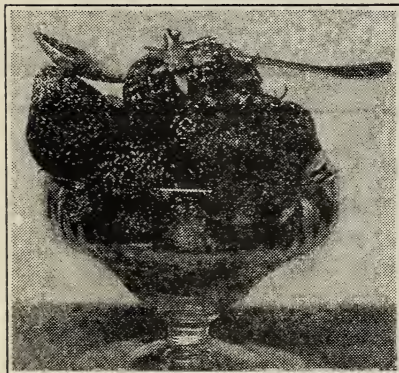
Mastodon Strawberries do not need to be planted as far apart as the Spring bearing kind, because they are rather shy about making new runners and they do not mat themselves into a solid bed in one year's time like the Senator Dunlap does. I would suggest that Mastodon Strawberry plants be planted about two feet apart. Let them stand about two or three years, but each Spring take out quite a number of the young plants and start yourself a new bed, so that you will have a new patch coming on all the time.

The Spring bearing Strawberry plants, such as Senator Dunlap, are very vigorous growers and increase very rapidly, and should be given lots more room. Put the rows at least four feet apart and put the plants at least two feet apart in the row. Even at that the second year you will have a solid mat of berries.

Mastodon Strawberry Prices

25 Plants	-----	\$1.00
50 Plants	-----	1.50
100 Plants	-----	2.75
200 Plants	-----	5.00

Postpaid



How to Renew an Old Strawberry Bed

If you have a Strawberry bed four or five years old and don't want to plow it up entirely, it is a simple matter to renew completely in two year's time in this manner.

About the middle of June or, just as soon as the patch is through bearing its Spring crop, go in with a spade and turn under a strip about two feet wide, take out the old plants and throw them away, and leave the ground in soft, mellow condition. Then leave a strip about a foot wide undisturbed. Dig up another strip about two feet preparing the ground nicely like you did the first one, and then leave another strip of undisturbed Strawberry bed about a foot wide. Continue this process clear across the patch. The foot wide strip which you left will make enough new runners to completely fill in the foot-wide strip which you dug out and bear you a dandy crop of berries the following Spring.



John Craig, Buffalo, Wyo.



Wesley Reid, Milford, Nebr.

About Your WOOL and FURS

We have just finished up our 3rd year of marketing furs for our customers and friends. It is by far the biggest year ever and I am glad to say you have all shown your appreciation enough so that we will continue this extra service. It has been a lot of work. You can imagine what a job it is to receive 500 to 1000 shipments a day. Then, they have to be graded and a buyer has to be found to bid on them. Then, the checks made out and sent to the shippers. Yes, it has been a bigger job than any of us figured on. It has probably cost us a good deal of money to do it, too. But, we know our customers are mighty glad to find a reliable place to send their furs. We get a lot of orders right along with the furs to be taken out of the fur check. And we have made a lot of new friends with our fur service.

So, in the long run I believe we will get the money back which we spend trying to get better prices for all you trappers.

We Will Be Busy On Wool Soon

The same thing goes for Wool. You can tell all your friends that we will be kicking up a rumpus in the wool market again this year. Yes, you can ship it to us. Listen to KFNF for prices or write to us about it. All we want to do is to get you every cent we can for your wool. I don't care who gets the wool just so we see that you get what's coming to you when you sell it.

This is just another way of showing our appreciation of your business. If you want to return the favor, do like the Trappers are doing every winter now. Send us your orders for the things we sell and can save you money on.

One thing you want to remember for sure. Don't sell your wool to anyone until you know what we are going to be able to get you for it when the market opens. We have wonderful connections and haven't any interest in it except to get every penny we can for you out of every pound of Wool you clip this year.

Henry Field.

Then just as soon as you harvest this crop of fruit, go in and dig out the strip of plants which you left the preceding year, leaving undisturbed the strip of new plants, which filled in the space that you dug out last year.

Then every Spring just as soon as your Strawberries are through bearing for the season, go in and dig out the two-year old strip and let it fill in and Fall. In this way you will always have a young patch of Strawberries, part of it one year old and part of it two years old.

Will Strawberries Mix?

We get hundreds of letters every year, from customers asking if the Mastodon Strawberries will mix with the common kinds planted near them. The answer is no, absolutely not. There is no possible way in which Mastodon Strawberries can mix with common sorts. The only thing that could happen would be for the runners to get tangled up so that you couldn't tell which was which. In order to prevent this you could keep a patch hood clean between the two varieties so as to keep each one's runners on its own side of the patch.

Then if you want to set out a new bed the following year, there would be no danger of getting the two kinds of plants mixed.



This picture shows how one customer beautified an unsightly corner of his back yard. Just compare this beauty spot with the all too common ash piles, tin cans, weed patches and old shoes which used to decorate so many back yards. A lily pool the size of this can be constructed for ten or fifteen dollars. I believe that the vine with the large leaves at the right of the pool is a Dutchman's Pipe Vine. Picture sent in by W. H. Riggle, Murray, Iowa.

BEDDING PLANTS

We have a wonderful lot of bedding plants growing for you in our Greenhouses here at Shenandoah, and they will be ready for mailing out just as soon as danger of freezing weather is past, or about the first of May. Of course, I suppose most of you have ordered your own seed and have your bedding plants coming on in boxes of dirt in the window, but for those of you, who forgot about it or put it off until it was too late, we have grown some mighty fine plants.

Pansy Plants. At the head of the list, of course, would come Pansy Plants. We have about three hundred thousand of them in beds out-of-doors, carefully protected with straw, which will be ready to ship about the first of April. If planted as soon as the frost is out of the ground in the spring, they will be a mass of bloom for Mother's Day and Decoration Day. They will have buds on them when they are shipped and will start blooming right away. These plants were raised from Steele's Very Finest Strain of Miracle Mixed Pansies, the highest priced strain on the market today. Our price is 60¢ per dozen or \$1.50 for three dozen, by mail postpaid.

Petunias. Last year we didn't raise anywhere near enough Petunia Plants to go more than half way around, but this year, I think we will have enough to supply everybody, especially of the standard varieties, such as Rosy Morn, Balcony Blue, Balcony Rose, General Dodd and Howard's Star. The price will be 50¢ per dozen or three dozen for \$1.25, by mail postpaid. You may take them all of one variety or assort them to suit yourself.

Asters. We can supply Aster Plants in four colors, red, pink, white or purple or assorted colors. The price is the same as the Petunias, 50¢ per dozen or three for \$1.25, postpaid.

Salvia or Scarlet Sage. We have a limited supply of Salvia Plants and while they last the price is the same as the Asters, 50¢ per dozen or three dozen for \$1.25, postpaid.

Geraniums. Hundreds of people each spring want small Geranium Plants for bedding purposes, and we have a nice lot of them coming on in two and a half inch pots to be shipped in paper pots with dirt on the roots. They will be in bloom or budded to bloom when you get them and we can supply at 25¢ for one, 65¢ for three, \$1.25 for six or \$2.00 for twelve by mail postpaid.

Canner's Special

This list is considered better than other varieties because of quality and yield. The collection includes what the average family will likely need. If you don't need all for canning you can use the surplus for the table. There are a number of other vegetables that may be canned such as green shell beans, both the pole beans and Limas. Baby carrots, pickles of all kinds, sweet peppers, pumpkin, squash and vegetable soup stock.

- 1 lb. Beans, Stringless Green Pod
- 1 pkt. Beets, Detroit Dark Red
- 1 lb. Peas, Little Marvel
- 1 lb. Sweet Corn, Stowell's Evergreen
- 1 pkt. Spinach, Big Green Leaf
- 1 pkt. Tomato, New Stone

No. 1936—CANNER'S SPECIAL, the above six items, \$1.40.

Frost Proof Cabbage Plants

Hardy outdoor grown, wintered over plants. They will stand our spring frosts and bad weather without serious setback. Sold in even one hundred lots of a variety. Varieties we offer are Wakefield, Norseman, All-head, and Early Flat Dutch. Postpaid price, 50¢ per 100; \$1.00 for 200; \$2.00 for 500; \$3.00 for 1,000.

201—Asparagus, Martha Washington Rust Resistant. A vigorous growing variety that will produce early crops of fine Asparagus. Big tender stalks, hardy, prolific and disease resistant. Per pkt., 5¢; ounce, 15¢; ¼ lb., 40¢; 1 lb. \$1.50 Postpaid.

Asparagus Plants

One-year plants are 25 for 60¢; 100 for \$2.00; 300 for \$5.00.

Two-year plants are 25 for \$1.00; 100 for \$3.00; 300 for \$7.00, postpaid.



Mrs. Louis Hoffman, St. James, Minnesota was the proud owner of this fine patch of cabbage. You can imagine all the good things she was able to make from this cabbage and it will probably make you wish you had some fresh, crispy cabbage right now.

If you want early cabbage order the Frost Proof Cabbage Plants from us - either the Early Jersey Wakefield or Norseman.

Prices: 50¢ per 100; \$1.00 for 200; \$2.00 for 500; \$3.00 for 1,000.

How To Trim Your Hedge

In planting out a young hedge, the tops should be cut back to within about three inches of the ground so as to make it send out branches close to the ground in order to have a thick hedge clear to the bottom. So many, many hedges are plenty wide and plenty thick at the top, and then taper down wedge shaped to bare trunks with no limbs close to the ground, and it is just as easy to have a hedge just as wide clear down as it is right at the top. In order to get it this way, it is very necessary that it be forced to send out plenty of branches low down by constant trimming the first year.

Now then, let us suppose that you have cut it off about three inches above the ground when it was planted. The little plants will send up probably three or four young shoots from each branch or limb that was cut off. When these young shoots get a few inches high, whack the ends off. You can do this with a pair of pruning shears, a sharp hand sickle, or even a pocket knife. The idea back of this pruning or trimming is to make them send out still more branches. In a few weeks' time each one of these little shoots which had its head removed will send out three or four more shoots. Just as soon as they make a few inches of new growth, they should be cut back about half way

also. This trimming process should be kept up every two or three weeks; all through the first year, and by Fall you will have a beautiful little hedge. Probably eighteen inches wide and eighteen inches high. Just as broad right at the ground as it is at the top.

Then next Spring just as soon as the new growth gets two or three inches long it should be nipped again and this kept up every two or three weeks all summer. The results will be a thick, well-trained, beautiful hedge. It is a very grievous mistake to let your hedge go all of the first year without any trimming at all and expect it to thicken up afterwards, because it absolutely will never make branches down close to the ground if you let it grow up as high as you want it to grow without any pruning, and then start trimming it.

Maybe you already have a hedge like I have described above; one of those kind that is shaped like a wedge with bare trunks and no branches below, widening out to a nice, thick, bushy top, which you have been trying for years to thicken up and make look like something. Alright, cut it off about three or four inches above the ground and start it over again just as if you were planting a new hedge, and trim it constantly the first summer, and in one year's time you can make a thing of beauty out of it.

The Early Bird Doesn't Catch All the Worms

The early bird catches the worm all right, but doesn't catch all of them. There are too many worms, or not enough birds, either way you want to look at it.

If there aren't enough birds to catch all the worms, the gardener will have to help out, for he can't afford to let the worm go uncaught.

If it takes an early bird to catch the worms, the gardener can't hope to have much luck unless he is early too.

On the job early in the season with a supply of spray materials, and what applies to the worm applies to the bug as well.

After the worm or bug once gets a good start there will not be enough birds and gardeners to catch them

all. Mr. Worm and Mr. Bug believe in early marriage and big families.

This would be all right with both the gardener and the bird if Mr. Worm and Mr. Bug and their many wives and children did not have such ravenous appetites.

The gardener sometimes gets the surprise of his life when he finds they and their families have eaten up a crop of some of his vegetables for an early breakfast.

So it really often resolves itself into the problem of whether the worm and bug or the gardener gets the vegetable crop. The gardener has always had the bird to help him, but as mentioned before, there are not enough birds. Now, he has improved methods and new spray materials to help. Take your choice of these described below.

How To Use Bug Dusts

We have different dusts for different purposes. Also an all-purpose dust that we call "Bug Dust" that contains an insecticide for both chewing insects and sucking insects, and a fungicide. It is fine for the backyard gardener. All our dusts are very finely ground and will adhere to the foliage whether it is damp with rain or dew or not. You can dust any time the wind is not blowing hard. In fact, you can dust any time you can spray as far as the weather is concerned.

Combination Bug Dust

Price as follows, not prepaid. It must go by express as it CANNOT GO BY MAIL.

3 lbs. Combination Bug Dust	\$1.00
5 lbs. Combination Bug Dust	1.50
10 lbs. Combination Bug Dust	2.50
25 lbs. Combination Bug Dust	5.50
100 lbs. Combination Bug Dust	20.00

"It catches 'em comin' and goin'."

A good way to fight insect pests of any kind is with our "Bug Dust." It is a combination of several kinds of insect killers, containing nicotine for the plant lice, lead arsenate for the melon bugs and similar chewing insects, and sulphur as a general insecticide and fungicide.

The great advantage of it is that it can be used against all kinds of insects, and you don't have to stop and worry about what to use. This is a sure shot against any of them.

It is a fine dust to be applied with a duster or dust gun, and is very easily applied.

Nicotine Carrier Dust

Price as follows, not prepaid. CANNOT GO BY MAIL. Must go by express.

3 lbs. Nicotine Carrier Dust	\$1.15
5 lbs. Nicotine Carrier Dust	1.75
10 lbs. Nicotine Carrier Dust	3.00
25 lbs. Nicotine Carrier Dust	6.75
100 lbs. Nicotine Carrier Dust	25.00

This dust is for sucking insects such as lice but not for chewing insects as cabbage worms and potato bugs. If you have a valuable crop or the lice are unusually bad, use this dust. "Bug Dust" contains nicotine but not as strong as this.

Dust as soon as the lice appear. Do not wait until your crop is badly infested. Use Nicotine Carrier Dust when things are serious.

Also use it for Striped Cucumber Beetles and young Squash Bugs. It won't always kill them but will make them mighty sick. It will drive away the cucumber bugs and if the squash bugs have only recently hatched out, it will get them.

85-15 Sulphur-Lead

Prices as follows, not prepaid. CANNOT GO BY MAIL. Must go by express.

3 lbs. 85-15 Sulphur-Lead Arsenate	\$0.85
5 lbs. 85-15 Sulphur-Lead Arsenate	1.25
10 lbs. 85-15 Sulphur-Lead Arsenate	2.00
25 lbs. 85-15 Sulphur-Lead Arsenate	4.25
100 lbs. 85-15 Sulphur-Lead Arsenate	15.00

An insecticide and fungicide combined. That is, it will kill chewing insects and control many plant diseases, but it will not destroy the lice. It is suitable for the orchardist and the small fruit grower and the gardener. It is a great saving of time to combine poisons for both insects and plant diseases as they have been combined in this dust. It has a little stronger insecticide poison than "Bug Dust" and sure "knocks 'em" if they eat it.

Bug Duster \$1.00

It is difficult and a disagreeable job as well as wasteful to apply any of these dusts without the aid of a duster or a dust gun as some call it.

This "Bug Duster" is inexpensive and handy. It is equipped with a long nozzle, so that you will not have to stoop over when you dust your melon or cucumber vines. There are other dusters that look like this one but none other, for the same money, that is quite so serviceable or satisfactory. Price, \$1.00 each.

Superbilt Duster

Furnished Complete, \$12.00, Not Prepaid

This is what we consider the best hand power duster made, and is suitable for either garden or small orchard work, but is especially designed for truck garden work. Weighs 10 lbs. and can be easily carried. Will work either one or two rows at once. Has a powerful fan which distributes dust evenly and steadily. Has valve and shut off to regulate flow of dust. Fully guaranteed in every way. This is a new model we are offering this year. The gears are enclosed, the capacity increased and the feed adjustment more efficient and the price the same as the old model.

Applying Wet Spray

Since both Volck and Black Leaf 40 are to be applied in a wet form, it is necessary to have a small hand sprayer of some kind. The ordinary 25c or 50c fly spray is ideal for the purpose and most of you have them already. If not, they can be obtained at any hardware store, at a nominal price.

Henry Field's Plant Spray

Non-poisonous to human beings, birds, animals or plants.

8-ounce Bottle makes 16 gallons of spray solution \$.85

16-ounce Bottle makes 32 gallons of spray solution 1.35

1-qt. Can makes 64 gallons of spray solution 2.25

Price includes postage and packing. Controls and kills such insects as

are listed below:
Cabbage Worms Leaf Hopper
Cut Worms Red Spider
Cucumber Bugs Thrip

Plant Lice
Tomato Worms
Rose Slugs
Flea Beetle

Potato Bug
Mealy Bug
Aster Beetles
Eggs and Larvae

Use on vegetables, flowers, small fruits, shrubs, vines and house plants. Kills both sucking and chewing insects.

This is a contact spray. Is easily mixed. Complete directions on each bottle. Use in an ordinary Fly Spray Gun.

Black Leaf 40

This is a very highly concentrated tobacco solution and was given the name, "Black Leaf 40" because it is 40% pure nicotine. It is also called Nicotine Sulphate sometimes.

This is the best thing known for fighting plant lice or Aphis. It is a contact poison and if properly prepared and applied will absolutely do away with plant lice of every kind. Black Leaf 40 is a dark brown liquid about as thick as maple syrup. We usually use two teaspoonfuls to a gallon of water to which enough ordinary soap has been added to make the water soapy. The soap is put in to make the spray spread better on the leaves and stick better.

Black Leaf 40 is no good whatever toward chewing insects of any kind and it is no good to ward off plant diseases or blight. Its only use is for fighting plant lice or Aphis, but it is sure good at that. It is a poison and must go by express, as we can not send poisons by mail. We have it in half pound bottles and two pound cans, price not prepaid. Half pound bottle \$1.25, two pound can \$3.75.

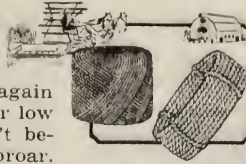
Volck

Volck is one of the emulsion sprays. In its original state it is a clear, white oil, but has been so treated and churned that it looks just like lard and mixes perfectly with water making it look milky. It is usually mixed at the rate of a teacup full of Volck to three gallons of water. This solution so prepared is very effective against Red Spider, Mealy Bugs, and Scale insects of all kinds, especially on house plants, such as Palms, Ferns, Geraniums, and foliage plants. Volck is also a very good fungicide and gives very good results when used for blights or mildews or fungus diseases of any kind. In our own Greenhouse we usually mix the Volck and Black Leaf 40 together, thus making a combination wet spray, which will kill plant lice, Aphis, Mealy Bugs, Red Spider, and scale insects all at the same time.

Volck is not a poison and can be sent by mail. Price, \$1.00 per quart can by mail postpaid.

"We have neglected writing you not because we were displeased with the merchandise we ordered but rather it seemed we could say so many good things about them that it would take a long time to write it all. We have ordered garden seeds, paint, tires and tire chains, dried fruit, overalls, shirts - and everything has been very satisfactory. Couldn't have been better."—Clarence R. Porter & family, Mystic, Iowa.

Binder Twine



Yes, we will have Binder Twine for you folks again this year and we will be kicking up a rumpus with our low price just like we have for the past 2 years. I don't believe we ever did anything that caused such an uproar. Believe me, the big fellows in twine business didn't like the way we cut the price. They'd been used to having pretty much their own way.

And when they found out our twine was absolutely Standard A No. 1 in every way they didn't know which way to turn. Our twine is guaranteed Standard "A" grade. It is also guaranteed to test 80 lbs. or better in tensile strength and to average 500 feet to the pound. Every pound of it is especially treated to keep crickets away and it will all be New 1930 manufacture.

Folks who used our twine are sure generous in praising it. They say it's "the smoothest, strongest and most uniform" they ever used. And, of course, most of them add a word of thanks for the way we have fought to keep the price down.

I am working on the deal for this year right now. Have been fighting on it for several weeks getting ready to handle about 4,000,000 lbs. I have hoped to keep our price the same as last year but it doesn't look so encouraging right now. Anyway, even if Binder Twine is a little higher this year you will find that we will be able to save you about as much as we have the last 2 years.

Write to us along about May 1st and find out what our price is going to be for sure. Or listen to KFNF for it. It won't cost you a thing to find out what our price is. We think we can save you money just like we have been doing and so you'd better get our price before you buy.

Every pound of it goes out with our Money Back Guarantee. You're the judge and can fire it right back if it doesn't suit when it comes.

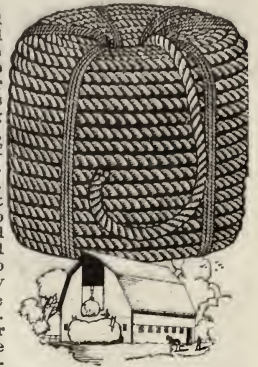
I think that's the kind of a deal you all like. If it is, pass the good word around and tell them all to get Henry's price before they buy their Binder Twine.

Pure Manilla Rope

1c per Foot Up.

For Hay Rope, Halters, Trip Rope, Clothesline, Etc.

This is 100% pure manilla and I've never found a stronger rope than this is. No jute, sisal or other substitute is used. Nothing but long, smooth, strong strands of manilla fiber. Three strand. Contains just enough oil to make it withstand weather and hard wear. Use $\frac{3}{4}$ to 1 in. for hay carrier, $\frac{3}{4}$ to $\frac{1}{2}$ in. for trip rope, $\frac{1}{4}$ to $\frac{3}{8}$ in. for clothes line, tie ropes, etc. Guaranteed the best rope you ever saw or your money back.



Inches Size	Strain lb. Breaking	lb. per 100 Ft. Gross Wt.	Postpaid in Zones 2 & 3.	
			Per Ft. Price	100 Feet
$\frac{1}{4}$	725	1.7	1c	\$0.80
$\frac{3}{8}$	1500	3.52	1 $\frac{1}{2}$ c	1.40
$\frac{1}{2}$	2500	7.1	2 $\frac{1}{2}$ c	2.35
$\frac{3}{4}$	5260	16.2	5 $\frac{1}{2}$ c	4.45
$\frac{7}{8}$	7700	22.44	7 $\frac{1}{4}$ c	6.95
1	9000	26.6	9c	8.15

10 Years of Satisfaction

"We have bought coffee, tires, dress goods and dried fruit of you and everything is O. K. I can say that you have the finest dried fruit I have ever seen - It's so clean that one can eat it right from the box without washing it. We have used your garden seeds for 10 years and just wouldn't use any others."—Robert Brown, Superior, Iowa, Box 14.

Everything Satisfactory

"We got one of the combination boxes of good eats and it certainly was fine. I cooked some of the prunes and they were just delicious. Not dry and hard like most dried fruit you get. We have also bought paint, tires, B Batteries and several other things from you and everything was entirely satisfactory."—Mr. & Mrs. A. B. Ozman, Pickrell, Nebr.

"As Pate Says"

"We have got tires, tubes, radio batteries from you and think they can't be beat - or as Pate says - you can't tie them. My tires have been on my Ford almost one year now and look like new yet. I put a Goodyear tire on about the same time and it is about ready for the junk. I was also well pleased with the price you paid me for my furs."—Zackie Owings, Brownville, Nebr.

Here Are Suggestions On Hot Beds and Cold Frames

If you can't get fresh manure for a hot bed plants may be started in a cold frame or in a sunny window in the house.

A window box should be about four inches deep and a convenient size to handle say 24x12 inches.

Use mellow, finely pulverized dirt with some well rotted manure mixed in.

Plant the seed in rows four inches apart; then water and place in a sunny window. Grow the plants in this box four to six weeks then transplant outdoors to a cold frame.

If plants seem too crowded in the box thin them out. They really should not stand closer than an inch apart in the row.

If you prefer to set them out in the open right from the box do not plant seed too early.

Some gardeners succeed well growing plants in a cold frame.

Build where it will be sheltered from the cold north wind. South of a windbreak such as a building, trees or a south slope is fine.

The frame should be six feet wide and as long as necessary. The north side 24 inches high and the south side 12 inches.

Bank up with manure or dirt on all sides, especially the north side.

Use good rich soil in this frame.

The only difference between a hot bed and a cold frame is that fresh horse manure is used in the hot-bed for bottom heat.

Dig a pit two feet deep and seven feet wide and as long as you like.

A week or ten days before you plant seed fill this

with fresh horse manure and tramp down reasonably solid.

Set a frame six feet wide on the manure so that it will settle as the manure does.

Throw on six inches of good mellow soil and allow it to stand several days before planting seed.

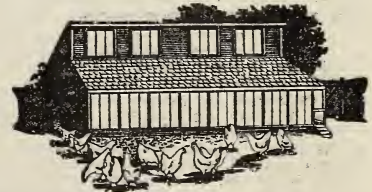
For the frame you can build a more or less temporary structure or build as enduring as you like. Some use cement.

Heavy Glass Fabric

15 yd. roll

\$3.75

Postpaid in Zones 2 & 3.



This is the extra heavy cloth-fabric used as a substitute for glass. It has been found far superior to glass for chicken houses, brooder houses, hot beds, cold frames and so on. It lets in the beneficial sun's rays that plain glass shuts out. Prevents leg weakness and rickets in chicks. Keeps hens healthier and laying better and soon pays for itself. Plants grow faster under it than under plain glass. Costs only a fraction of window glass.



This is the extra heavy grade that will stand hard use and long wear.



Grow More Profitable Live Stock and Improve Your Land With ALFALFA

Alfalfa is by all odds the most valuable roughage for live stock that we have. Not only in yield per acre, but in value of the crop. No farmer can do better than to make a beginning to sow some alfalfa this year. Live-stock cannot be produced economically or profitably without alfalfa for them every day. There are thousands of farmers who do not realize the great value of alfalfa. If they did it would be found on every Corn-belt farm. I don't know whether you know it or not but from the standpoint of digestible protein, alfalfa produces twice as much per acre as red clover and seven times as much as timothy.

For feeding to dairy cattle alfalfa hay is of as much value pound for pound as bran. If you don't want to buy bran, you don't have to. Grow alfalfa and have something just as good. Alfalfa is strong in vitamins and minerals. It takes the lime out of the soil to put into the bones and the teeth and milk of animals. It means strong vigorous livestock, sows that don't "go down behind," pigs with good bone and muscle, and a lot of milk from the dairy cow. It makes good hay not only for dairy cattle, but also for horses, beef cattle, sheep, hogs and even poultry. As a pasture plant for hogs it can't be beat. Also makes a wonder feed for the brood sows during the winter. This spring is going to be a good time to get started with alfalfa. There is lots of moisture in the soil and you can either seed alone, or with a light nurse crop of oats or barley. We never use over a bushel of oats or barley per acre. Be sure to inoculate your seed, it will pay you well.

USE McQUEEN'S INOCULATION. Write for Field Seed Price List.

GRIMM ALFALFA

Grimm is the hardest variety known. Stands a lot more abuse than the common kinds. Where others freeze out Grimm stays with you and stands for years. Produces about the same as others but makes a finer stemmed and better quality hay. Grimm is most disease and wilt resistant. Most sure to make a stand. Best for ground with a high water level on account of its branching root system. Use 12 to 15 pounds per acre. The cost of seeding is about the same as for the common varieties.

Cossack Alfalfa

Cossack is about the same in hardness as Grimm. Makes the same kind of growth and hay. A very good variety to use.

Montana and Dakota No. 12

These two common varieties are the hardest of all common alfalfas. Will stand the winters better than any other except Grimm and plenty hardy for all the corn-belt. Montana and the Dakotas produce the hardest common alfalfa. Better use it for safety and you're sure of a stand that will stay with you through hard winters or severe conditions. Use 15 to 20 pounds per acre.

Delta No. 18 Utah

Here is a variety that is a good one. Grown on the high plateaus of Utah under very severe winter conditions. Good for practically all parts of the Middle-west.

Kansas-Nebraska Grown

The most used common alfalfa. Good and hardy grown in Western Kansas and Nebraska. Dry land grown. Most farmers like it best. Produces a world of hay of good quality.

Remember in sowing your alfalfa you must plant good seed if you expect a profitable harvest. You cannot grow good crops from poor seed any more than you can make water run up hill. Our seed is good, and will be sent subject to your test and approval on a money back guarantee. We have a leaflet on alfalfa we will send to you free if you would care to have it. It will help you with a great many of your alfalfa problems.

Sweet Clover is the Greatest Soil Builder of All and a Great Pasture Crop, too.

Very few Corn-belt farms are producing their maximum per acre yield. Why? Because the continuous cropping for years, has lowered the nitrogen and humus supply. If we are to produce large crops of corn and small grains we must keep up the plant food. The Agricultural college has proven for years that the yields of the standard farm crops such as corn, wheat and oats can be greatly increased following sweet clover, often as much as from 50 to 100 per cent. No other legume grown will equal sweet clover in supplying nitrogen for enriching the soil. A good stand of sweet clover starts a nitrogen factory right on your farm. On account of the enormous growth made by sweet clover, it also adds great amounts of humus to the soil. Its root system penetrates the hard subsoil and permits better drainage. Also the roots of sweet clover brings up plant food from great depths that other crops do not reach and leaves it where other plants can get at it. The best part is though, that it takes lots of nitrogen from the air and stores it in the soil for the future.

The tops and roots decay rapidly and soon become a part of the soil. It is estimated that a good stand of sweet clover plowed under is equal to twenty tons of barn yard manure. Besides being our best legume as a soil improver, sweet clover also shines as a pasture crop.

It will carry more live stock per acre than any other legume, and is equal in feeding value to alfalfa. With sweet clover as cheap as it is, everybody can afford to plant it with all their small grain. After the grain is taken off you can pasture down growth in the stubble, and plow it under the following spring and follow with corn. All of our seed is new crop, big plump berry, beautiful color, free of noxious weeds and thoroughly scarified. Write for free sweet clover leaflet and samples. Inoculation of all clovers pays big returns.

White Sweet Clover

Here is the best one for all around use. The best soil builder of all. Has more root system and grows heavy. Sow in the spring alone or with the grain crop. Pasture in the fall if you want to and plow under the next spring late as possible. Follow with corn or grain and you'll sure be surprised at the yield. So much better and less expensive than fertilizers you buy. Green manure keeps the soil in good workable shape, too.

Yellow Sweet Clover

Grows finer and smaller than the White. Lots of farmers like it better for hay and pasture on that account. Sow same as White.

Grundy County White

A dwarf white sweet clover. Grows about the same as yellow.

Be Sure to Inoculate—Write for a Field Seed



Price List



VELVET BARLEY

Barley is the heaviest producing small grain. Is good feed as it is high in food value like corn. The earliest grain crop off in the summer and also the best nurse crop of all grains. Does well under bad conditions.

Velvet is the best variety developed for the Cornbelt. The heaviest yielding and the best quality grain. Velvet is not mean to handle. Although it is bearded, the beards do not have any barbs on them. The beards are just as smooth as oat beards or straw.

Use some barley as part of your grain crop this season. Put in 2½ bushels per acre at oat seeding time or a few days later.

Soy Beans

There is no question but that soy beans, because of their many uses, will be our leading legume crop. They can either be grown alone or with corn, and make a very valuable home grown supplement feed for all kinds of stock. On all the sour soils in the Middle-west where it cannot be limed for alfalfa or red clover, remember you can grow soy beans and have a hay crop equal in feeding value to alfalfa. The growing of soy beans and corn together to hog down is a very profitable combination. We all know that we should supplement the corn ration with some good nitrogenous feed.



Soy Beans

For Feed, Cash and Soil Improvement

Soy beans will not entirely take the place of tankage as a supplement to corn when hogged down, but help a lot to balance the ration and increase the hog grower's profit. Hogging down corn and soy beans has proven very profitable and is becoming more and more widespread in the Corn belt every year. Soy Beans greatly improve the soil. They can be profitably grown for seed and as the yield is large and they are easily grown and harvested. Soy beans yield from 20 to 40 bushels per acre, and the plants are especially free from insect pests and disease troubles. It is always a good plan to inoculate soy beans.

We have a free leaflet on soy beans which tells all about growing and handling the crop.

Manchu Soy Beans

We like this bean best for the Cornbelt. It really is the best all around variety. Good for seed, grain, hogging down, hay and silage. Does well on most any soil under most conditions. In fact, it is the best for all purposes. A medium maturing yellow bean. Drill in solid, in rows or with corn.

Virginia and Pekin Soy Beans

Both especially good for hay. Virginias are medium late maturing, brown seeded and the best for poor soils. Tall growing and good yielders. Considered best for hay and also good for seed and silage. The Pekin is a small seeded black bean. Requires about half the rate of seeding as larger ones on that account. Very good for seed, hay or silage. Stands up well and fine stemmed. Medium late.

Other Field Seeds

Due to lack of space we cannot tell you about all our field seeds. We also handle the finest stocks of the following: Mixed Hardy, Lot Radio Hardy N.W. and Grimm Affidavit Alfalfa, Mammoth Red, White Dutch, Alsike, Dalea and Tibum Clovers, Timothy, Timothy-Alsike, Timothy-Red Clover, Timothy-Mammoth Red Clover, Permanent Pasture, Permanent Meadow, Lowland Pasture, Hog Pasture Mixtures, Lawn Grass and Shady Nook Lawn Grass mixtures and other mixtures. Kentucky Blue, Canadian Blue, English Blue, Orchard and Bermuda Grass. Red Top, Bromus Inermis, Kaffir Corn, Milo Maize, Syrup and Fodder Cane, Feterita, Winter Vetch, Canadian Field Peas, Golden Millet, Iowa No. 103 Oats, Marquis Spring Wheat, Oderbrucker and Velvet Barley, Buckwheat, Cyclone Broadcast Seeders, Pulverized Sheep Manure and McQueen's Seed Inoculation. Also other grades of Alfalfa, Sweet Clover, Alsike Clover and Red-Top.

Medium Red Clover

More Reasonable This Year

Red clover may be justly styled the corner stone of American Agriculture. A great many of you farmers have gotten away from the seeding of your old standby for a good many years because the price has been so high. This year in Iowa we have a beautiful lot of high grade seed to offer at a price all can again afford to sow. Our seed is of good color, big plump berry, and free of noxious weeds. Whether you buy your red clover from us or from somebody else, insist on home grown seed that is acclimated to our severe winters. Red clover makes a wonderful hay and pasture crop. Also makes a very fine green manure crop to plow under. Don't forget to inoculate. Write for Field Seed Price List.



Grow More Rape

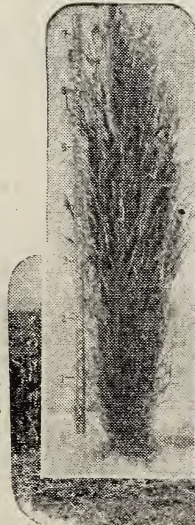
Rape and more Rape — that should be an important part of the crop program on all Mid-western farms that carry live stock, particularly hogs, sheep and calves. Rape makes dandy good forage, being one of the greatest annual emergency pasture crops of the Corn-belt. To get an idea of the relative value of rape and alfalfa, the Iowa State College at Ames in their feeding tests showed that hogs pastured on rape required less grain for 100 pounds of gain than when pastured on alfalfa. This is a real compliment to rape, as alfalfa is considered America's greatest pasture and forage crop. It only takes from 6 to 8 pounds of seed per acre, and with rape as cheap as it is, everybody that needs an annual hog, sheep or calf pasture can afford to sow a few acres. If you are going to hog down some corn, sow some rape at the last cultivation. It balances the corn ration and makes each acre of corn yield more pork.

Write for Field Seed Price List.

Sudan is a Money Maker

For an annual hay and pasture crop it is pretty hard to beat Sudan Grass. It is a quick growing annual that should be planted after the ground is well warmed up a little after corn planting time. We suggest using from 20 to 30 pounds of seed per acre. As a pasture it will carry more live stock per acre than any other grass. It is nothing unusual for sudan to carry 5,000 pounds of live weight per acre all summer, after the blue grass has dried up. As a hay crop it is easily and quickly cured, can either be cut with a mower or with a binder and tied in small bunches. Cures beautifully this way, and is liked by all live stock.

Write for Free Sudan Leaflet.





The Seed Corn Testing Room

This is where every bushel of our corn is tested. The picture shows 7 testers holding about 100 trays. And each tray holds 4 tests of 100 grains each. That means 400 tests on at one time. We have had them all full since the last of November.

This has been the worst year in all my experience to find good, high test seed corn. We have worked long and hard but have

come through with some real seed. Not any big amount and not enough for everybody but what there is of it is honest-to-goodness seed. The best you will find anywhere.

We can't sell it as cheap as some who send out seed testing 80% to 90% but it will sure grow, give you a good stand with reasonable care and produce a big crop. And that's what you want.

PRICE LIST SEED CORN (Not Hung)

These prices are for the standard main crop varieties and the early kinds described in detail in the Seed Corn Booklet and briefly below.

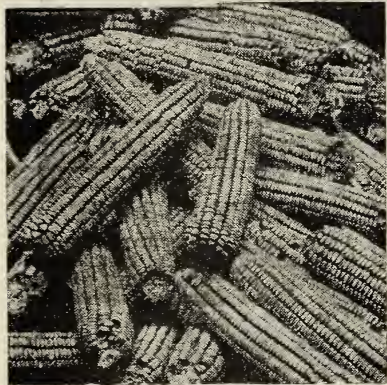
This is strictly first class seed, extra selected, butted and tipped by hand, shelled and triple graded, tested before shipping, and tests marked on each sack. Prices are f.o.b. here, sacked in strong, new sacks, with no extra charge for sacks. You pay the freight or express. (If wanted by parcel post, add postage.) We will make the following prices on all the standard and early varieties.

All Seed Corn prices subject to change without notice.

10 bu.	5 bu.	2 bu.	1 bu.	½ bu.	1 pk.	1 gal.
\$3.75 bu.	\$3.85 bu.	\$3.90 bu.	\$4.00	\$2.15	\$1.25	\$0.75

Hung and Dried Corn - Most any variety \$6.00 per bushel while it lasts.

All Seed Corn Prices F.O.B. Shenandoah. Bags Free.



Golden Utility Wins in Iowa Yield Contest

\$3.75 to \$4.00 bu. See Price List Above

This is a sister corn to Field's Utility Yellow which has become our most popular corn in 3 short years. We like Golden Utility better in many ways than the Field's Utility. It has a wider, meatier, richer golden kernel. Matures 5 days earlier and is an immense yielder. Does extra good on medium or thin land. And good land, too.

In District 7 of the Iowa State Contest it outyielded the average of all corn entered 5.3 bu. per acre. Does well north to Sioux City or farther and almost anywhere East, South, or West to the mountains. The amount for sale is limited. The germination is very high.

YELLOW VARIETIES

Golden Utility - See picture description below.
 Krug's Yellow Dent - Yield contest winner.
 Champion Yield Reid's - Big, rough corn, won the Mo. Yield Contest a year ago.
 Funk's Yellow Dent 176 A - Smooth kernel.
 Imp. Shenandoah Yellow - Large ear; deep grain. Very popular from here South.
 Shenandoah Special - Similar but smoother.
 Rough Reid's Yellow Dent - Large and showy.
 Smooth Reid's Yellow Dent - Smoother, earlier.
 Ia. Goldmine - Slightly earlier than Reid's.
 Nebr. Cattle corn - Wonderful corn for thin or dry land. Very popular in Nebr.

WHITE VARIETIES

Iowa Silvermine - For old or thin land.
 Boone County White - Deep grain, large ear. Very popular for heavy land.
 Cornplanter - Similar to Boone but showier.
 St. Charles White - Red cob, white grain.

EARLY 80 to 90 DAY VARIETIES

For early corn here and main crop north.
 Northwest Yellow Dent - Best for early feed or hogging down. Finest of all early yellow.
 Minn. No. 13 - Similar but 10 days earlier.
 Silver King - Main crop white for northern Iowa, Minnesota, etc.
 Red 90 Day - White cap, red grain. Early.
 Golden King. Highest yielding and best corn for northern Iowa. State Yield Contest winner for several years.
 Ioleaming - Similar but larger & 10 days later. If you don't find the variety you want listed here write us. Lack of room prevents listing everything we have available.

FIELD'S UTILITY YELLOW

Early Hung and Dried-High Test
 Price \$6.00 per bu. f.o.b. Shenandoah.
 In all my 35 yrs. selling Seed Corn I have never found a corn that gave such satisfaction. Last year over ½ of the seed corn we sold was Field's Utility. It matures early here and is a tremendous yielder. Stood 1st in Ia. yield Contest this district year before last. It was originated by the U. S. Dept. Agri. Try some.

Hung and Dried Corn

\$5.00 per bu.

F.O.B. Shenandoah.

We have a limited supply of extra fine early hung and dried corn. See list of varieties below. We have some of most every kind. The germination is as near perfect as you will find anywhere. We ship subject to your test and approval. But if you want some, better hurry. Whether you buy from us or someone else get your seed corn right now and test it. Then you are sure of getting a stand. But test, don't guess.

Henry Field's Non-Poisonous

Corn Dust

1 lb. Can \$1.50 Postpaid

(ENOUGH TO TREAT 5 TO 8 BU. CORN)

Non-poisonous, combination disinfectant and rodent-repellant. This is a double duty dust. It is not only to control corn diseases and to help increase yields but contains a bad-smelling ingredient that has been found helpful in repelling mice, squirrels and other bothersome field rodents. This is the greatest performing dust we have ever tried. It does a wonderful job of controlling diseases and in official tests has increased the yields from 4½ to 21½ bu. per acre over untreated seed of the same kind. Dust treatments stimulate weak seed. In a bad year like this every bushel you plant should be treated. The Iowa State College at Ames have tested this new, non-poisonous dust with wonderful success. It's a real one. It is non-poisonous and harmless to children, stock or chickens. And will be mailed to you parcel post paid.



This test speaks for itself. On the left is another Dust, in the middle H. F. Corn Dust and on the right untreated. The corn in all cases was exactly the same. The only difference was in the treatments. It pays big to treat seed corn and especially so in a bad year like this.

FREE SAMPLE!

We will gladly mail a small, FREE SAMPLE so you can see how bad it smells and test it on some of your corn in the house and see if it doesn't make it germinate better, come up quicker and grow faster.

Price - \$1.50 for 1 lb. can postpaid. (1 lb. treats 5 to 8 bushels. We like to use all dusts heavy or 1 lb. to 5 bu.)

Bayer Dust \$1.75 lb.

(Enough for 5 to 8 bu. of seed corn)

We have always considered Bayer Dust the best of all disinfectants until we found this non-poisonous Corn Dust which is made exclusively for us by one of the country's largest manufacturers of dusts. If you still want Bayer Dust we have it at \$1.75 lb. can prepaid. It is a poison and must go express.

Fodder and Ensilage Corn

This grade is for drilling thick and is not so carefully selected or graded. Mammoth White Ensilage - Tall, heavy and late. Leaning Yellow Ensilage - Good height, heavy and early. Early Dent Fodder - Smaller and earlier for short seasons.

Prices - 10 bu. \$2.75 per bu.; 5 bu. \$2.85 per bu.; 2 bu. \$2.90 per bu.; 1 bu. \$3.00; ½ bu. \$1.65; pk. \$1.00; gal. 60c.

Can You Beat This Tomato Yield?

"I will tell you a little of my experience. On less than a quarter of an acre I raised my garden, which was fenced from the chickens. I just intended to raise enough for our own use—there are six of us—but it grew so well I had much more than we could use.

I had four rows of tomatoes 110 feet long and sold \$36.00 worth of tomatoes at \$1.00 a bushel and canned 108 quarts; gave three bushel away and made 46 pints of catsup, besides using all we cared for.

I raised the plants myself. Planted the seed in two flat boxes in a sunny window, and put them out of doors as soon as the weather was fit, but covered them up at night. That way they got to be strong plants. Then I set them out in May. We had ripe tomatoes soon after the 4th of July."—Mrs. Herman Stetter, Bennington, Kansas.

Mule Corn Hybrid Wins Heavy In State Yield Contest

Graded — \$10.00 Bu.

Not Graded — \$7.00 Bu.

F.O.B. Shenandoah.

SPECIAL OFFER—Enough for one acre \$1.50 Postpaid.

Here is a summary of the winnings made by our new Mule Corn Hybrid in the 1929 Iowa State Yield Contest. The results speak for themselves.

Average yield per acre of all Mule Corn Hybrid entered in the state contest 83.5 bu.

Average yield per acre of all Farmers' Corn entered in the state contest 66.67 bu.

Difference in favor of our Mule Corn Hybrid 16.83 bu. per acre.

Average yield per acre of all Mule Corn Hybrid entered in contest 83.5 bu.

Average yield per acre of all Hybrid Corn entered in the State Contest 72.76 bu.

Difference in favor of our Mule Corn Hybrid 10.74 bu. per acre.

These are the averages for all corn entered in the Iowa State Yield Contest for 1929. We won 6 ribbons on Mule Corn Hybrid including 1sts, 2nds, 3rds, 5ths and 6th. The high yield on Mule Corn Hybrid was 97 2-5 bu. per acre.

No one enters in the state contest unless he is pretty sure he has a better corn than most anyone in his territory. In our local Page County Yield Contest our Mule Corn Hybrid outyielded Reid's Yellow Dent 18.1 bu. per acre.

Both the State and County tests were comparisons of the different kinds of corn in the same field. And in each field were 10 plots of each kind of corn. The fields had ordinary care by average farmers. No special fertilizing, cultivating or care was taken. All had the same fair trial under ordinary farm conditions. Test plots were located in 12 different parts of the state.

For prices and details of our Mule Corn Hybrid see page 41 of the new seed catalog mailed in January or write for a sample and the "Story of Mule Corn". Mule Corn Hybrid is an inbred, detasseled hybrid. Look out for fake hybrids. Be sure of what you are buying.

Here's Advice On Plant Diseases

Cabbage Yellows

The plants are stunted and turn a yellowish green and the lower leaves fall off. A black ring is found in the stem and often one sided plants are found.

After this disease once gets in the soil it will remain there for 12 or 15 years, so cabbage or related crops should not be grown on this soil for a long time.

Treatment. Burn the diseased plants and grow a yellows-resistant variety.

Cucumber and Melon Wilt

The vines will wilt, dry up and die when attacked. The disease sometimes appears early in the spring killing small plants and may cause injury later on throughout the season.

Treatment. Pull and burn vines that are diseased. This plan is especially effective early in the season.

The Striped Cucumber Beetle is the principal and possibly the only way this Wilt is spread from vine to vine, so these bugs should be kept under control.

Tomato Wilt

This disease produces an upward rolling of the leaves followed by gradual yellowing, wilting and death of the affected plants. The disease lives in the soil and also may be carried on the seed.

Treatment. Grow wilt-resistant va-

rieties. There are a number of them both early and late varieties.

Leaf Spot

This disease causes small circular spots with light centers and dark margins. It starts on the lower leaves and works upward causing the leaves to curl, dry up and fall off, leaving the stems bare except for the tops.

Treatment. Spray with Bordeaux Mixture, beginning as soon as the disease appears or even before while the plants are still small.

Rotate the crop and burn all diseased vines.

Damping-off

The disease attacks small plants usually in the hot-bed or cold frame but quite often in the field.

Cloudy, murky weather is very favorable to the development of the disease. Bright sunshine is a good preventative.

The plants should not stand too thick in the hot-bed or cold frame so that the sunshine can reach the ground around the plants. The disease will live in the soil from year to year so use fresh soil in the hot-bed or plant bed.

Treatment. Spray the soil and plants in the hot-bed with Uspulun diluted according to the directions you will receive on the package. Or dust with Bayer Dust.



Trapnest House on the hatchery Master Breeding Farm where 9 Breeds are being Trapnested.

Making Egg-Bred Baby Chicks

The picture above shows one of the Trapnest houses on our hatchery farm. Every nest is a trapnest, 9 of the leading breeds are being trapnested every day. Every hen's record is kept. We know at the end of the year just what hens lay enough to be profitable and which ones are unprofitable and should go to market. We breed and produce only from the profitable ones.

This Trapnesting work and the introduction of the 384 pedigreed males, from Winter Egg-Bred hens bought at the Iowa State College this year, makes our hatchery the outstanding one in this part of the country. No one in this section can equal our quality of Winter Egg-Bred chicks. And only a very few in the whole country. Eggs are what make money and our chicks are from great egg producers. We sell at reasonable prices as good or better chicks than most of the specialty breeders ask \$30.00 to \$50.00 per 100 for. See our

Baby Chick prices on page 43 of the new Seed Catalog.

Come and see us. See the trapnesting. See our Winter Eggs-Bred hens. See some of the Pedigreed males that came direct from the Iowa State College. These males are from stock with winter Egg-Breeding and records as high as 322-eggs a year. We have money making stock and we want you to come and see it for yourself. See Page 43 of the new Seed Catalog for prices of our Baby Chicks. Or write for our Baby Chick Catalog which explains our breeding work and shows pictures of some of our stock. Don't take a chance on being disappointed—Order your chicks early. Only \$1.00 down books your order for any date. Pay balance 10 days before shipment. This way you are sure of getting what you want when you want it. Order now — even for May or June delivery.



FIELD'S ALL WOOL SUITS and OVERCOATS

that give you the last word in Style without Extravagance

Postpaid in Zones 2 & 3.

\$22.00 Buys A Good Suit of Clothes

Yes sir! You can get two suits from Henry Field for about what you've been paying for only one. How do we do it? We select our own woolsens - get the pick of the mills' lines. Then we have our suits tailored by firms that want to keep their workers busy all the time. They can use their slack time working for us so we get special low prices. We buy literally thousands of suits. That's why our values will astound you.

Splendid blue serge - fine pencil stripes - grey serge - hard-finished worsteds and twists - woolsens and cassimeres - we have them all. And every one is tailored to our rigid standard of quality.

Shoulders carefully padded; inner linings of linen canvas; outer linings of mohair or rayon with long-wearing sleeve and pocket-linings. Best buttons and button-holes.

Master designers draw our suit patterns. They are absolutely correct in fashion. Styles for conservative older men and snappy models for the young fellows. We can fit the extra tall, the stout, the short, and the great big men, as well as those who take regular sizes.



Overcoats \$20.00 and Topcoats

I don't suppose there is a style or color in overcoats you can't find here at \$20.00. Our only worry is to make you believe they are as good as they are. Tell us your chest measure and give us an idea of the weight, color and style you like, and we'll guarantee to suit you in every way. If you don't agree that we save you \$10.00 or \$15.00, send the coat back.

Boys' Overcoats

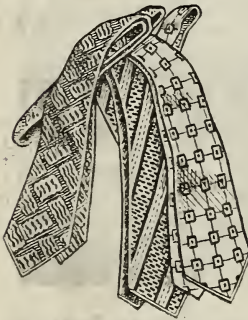
Sizes 3 to 8
\$4.95

Sizes 9 to 18
\$8.95

Good materials similar to our men's overcoatings. Sateen yoke linings. Plaid flannel body linings. High quality workmanship and styles that make the boys happy.

1 Pant Suits \$22.00 2 Pant Suits 27.50
Postpaid in Zones 2 and 3.

Write for our free Clothing Circular and see actual samples of some of the woolsens we use in our suits.



New Patterns in Silk 4-in-Hand Ties \$1.00

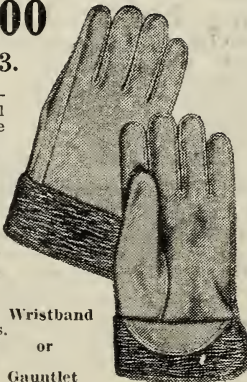
Postpaid in Zones 2 & 3.

Our ties are made of high grade silks in the season's newest patterns and colorings. Lined with wool to prevent wrinkling. The true bias cut makes our ties correct in shape. Lots of men have us match up their shirts with ties when they order.

Work Gloves \$1.00

Postpaid in Zones 2 & 3.

You've never put on a more comfortable glove than this one. It will stand wear, too. It's made of genuine horse hide leather. Soft. Flexible. Smooth. And you can bet these gloves will stay that way. Wet them. Wash them. They will turn out just as soft and comfortable as the first day you put them on. Guaranteed, of course. You to be the judge. Your choice of wrist band or gauntlet style. Regular and Large sizes same price. \$1.00 a pair, P.P.



Extra fine Cotton Flannel gloves. 10-ounce Flannel. Knit wrists. Strong seams. 1 dozen for \$1.80 postpaid in Zones 2 & 3.

Wristband or Gauntlet

Boys' Suits

\$8.75 and \$12.00

Waist Measure
25 to 27

Waist Measure
27 to 30

A big variety of novelty woolsens, tailored in mannish styles. Knickers or long pants models. Better quality and style guaranteed. You be the judge.

New Value Dress Shirt

\$1.75 each or \$5.00 3 for

Postpaid in Zones 2 & 3.



Beautiful lustrous, firmly woven broadcloths that look like silk. Wonderful woven madras. Silk striped shirtings. In fact we have all the stylish weaves and about any color or pattern you could want. Collar attached or neck-band styles. Sizes 14 to 19. We're especially proud of our plain color broadcloth shirts in white, blue, and tan. State size and color wanted. We'll take all the risk of pleasing you.

For Boys Too!

Dress Shirts \$1.00

Beautiful patterns in good broadcloth. Any size from 10 1/2 to 14 neck measure.

We Think These Overalls Can't Be Beat

And Thousands of Our Customers Agree With Us

Made For Real Comfort and Long Wear

Men's Sizes up to 44 - 2 for \$3.25
 Sizes 44 to 48 - 2 for \$3.58
 Sizes above 48 - 2 for \$3.90

Jackets Same Price As Overalls
 Postpaid in Zones 2 & 3.

The 8 oz. blue denim used in our overalls is heavier because there are more threads to the inch used in weaving it. And it's a firmer weave, too. That's why it is longer wearing and is mighty hard to rip or tear. Color-fast and pre-shrunk and made with a high class workmanship you'll recognize the minute you see them.

Our specifications call for big, over-size dimensions all around. Wider legs. Fuller through the waist and hips. Broader in the bib. No wonder they are more comfortable. They give you a full, easy freedom at work.

Check over the features listed at the right. Pockets are the long lasting kind, too. And the buttons will stay on. In every respect we are proud of these overalls and believe you'll save

money by buying them from us. Of course, they are fully guaranteed. Order yours now and you can return them unless they are the best you've ever seen for anywhere near our price.

Boys' Sizes

Ages 3 to 8 inc. \$.90
 Ages 9 to 14 inc. 1.10
 Ages 15 to 18 inc. 1.25

Jackets Same Price as Overalls
 Postpaid in Zones 2 & 3.

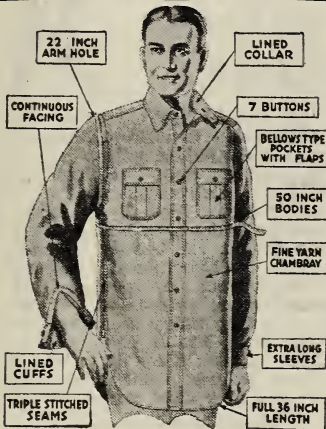
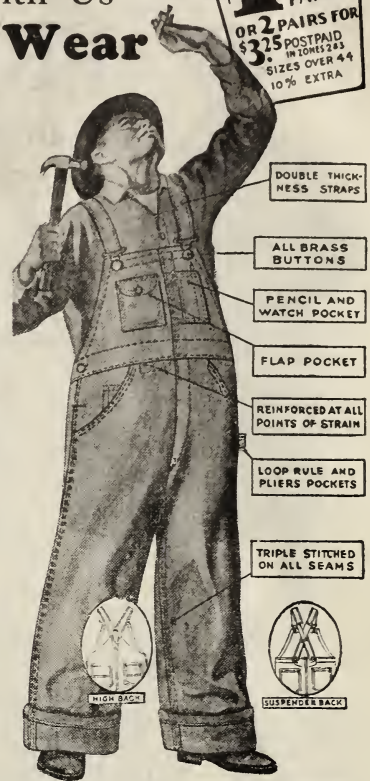
Above sizes are 2:20 wt. Blue Denim, made to easily outwear and outlast the average kind. Roomy like dad's with a generous lot of good big pockets. More nearly fade-proof and shrink-proof than the usual run of boys' overalls. Guaranteed worth the money with you to be the sole judge when your order comes.

Boys' Play Suits

Sizes 2 to 8 years — \$1.00
 Sizes 9 to 14 years — 1.25
 Postpaid in Zones 2 & 3.

Regular style, full length sleeves, turn-down collar, attached belt at waist. 2 side pockets, 1 hip pocket, 1 breast pocket. Pocket corners bar tacked. Plain band cuff on sleeves; 2 seam leg; best brass buttons. Material used is indigo dye blue with very narrow white pin stripe. They'll wear so well we advise buying them large enough so the boys can grow a little.

\$1.75
 PAIR
 OR 2 PAIRS FOR
\$3.25 POSTPAID
 IN ZONES 2 & 3
 SIZES OVER 44
 10% EXTRA



Work Shirts

the kind that wear longer and wash better.

Sizes 14½ to 17 3 for \$2.50
 Sizes 17½ to 19 3 for \$2.75
 Boys 10½ to 14 3 for \$2.00
 Prices Postpaid in Zones 2 & 3.

Here's our idea of a real shirt. Best grade of fine-yarn chambray, close-weave, tough. Made a yard long and broad enough through the body so it doesn't bind across the shoulders. Big in the armhole, elbow and cuff. Made strong, too, with principal seams triple-stitched, collar and cuffs lined, continuous facing on cuff openings. Big pockets with button-down flaps and pencil compartments. Open front with two extra buttons to insure closed front below waist band. It's a wonderful shirt!

A New One!

Fancy Work Shirts

Sizes 14½ to 17 3 for \$2.75
 Sizes 17½ to 19 3 for \$3.00
 Boys 10½ to 14 3 for \$2.50
 Same style as our regular blue or grey chambray shirts. This new one is made up of long-wearing fancy madras in novelty blue, grey or tan checked styles.



Men's Socks

Cotton Work Socks

6 Pairs 90c; 12 Pairs \$1.75.
 Postpaid in Zones 2 & 3.
 Unusually good quality Work Socks. Made of long staple cotton with reinforced heels and toes. Strong, ribbed tops and seamless feet. These are real socks. Will feel better on the feet and outwear any you ever saw at this price. Colors: Blue mixed or Brown mixed. All sizes.

Cotton Lisle Socks

5 Pairs for \$1.00 Postpaid in Zones 2 & 3.
 Medium weight cotton lisle dress socks with reinforced toe and heel. They look nice and fit good. If you are hard on socks take us up on these. Colors: Black, Cordovan Brown or Gray. Sizes 10 to 12.

Wool Socks

50c a Pair; 3 Pairs \$1.45; 6 Pairs \$2.25.
 The kind of extra heavy wool socks that the lumber jacks of the North wear. Ever thread is pure wool. There are 3 different colors of this weight. One is a white sock with a straight top - sometimes called a boot sock. The tops are red or green. We also have a blue sock with stiff ribbed top and a blue boot sock with the straight top. All the same price.

Sport Sweater

\$3.95 Postpaid in Zones 2 & 3.

Sizes 36 to 46.

Every man and woman can use one of these fine worsted sweater coats. Just the thing for chilly weather. It's the collarless style with sleeves, button-down the front and two button-through pockets. This coat of ours is a good quality, full size, fine weave worsted in tan, brown, blue, grey heather mixed. The seams are neatly finished. The cuffs and bottoms are tightly knit so they'll hold their shape.



Jumbo Wool Sweater

\$4.75 Postpaid in Zones 2 & 3.

When it's cool and yet not cold enough for a heavy coat this Jumbo Knit Wool Sweater is just the thing to slip into. Roll collar, two

pockets, close knit. Choice of navy blue, dark red or brown. Sizes 36 to 46 for men or women. \$4.75 Postpaid in Zones 2 & 3.

Boys' Sizes 26 to 36. \$3.75 Postpaid in Zones 2 & 3.

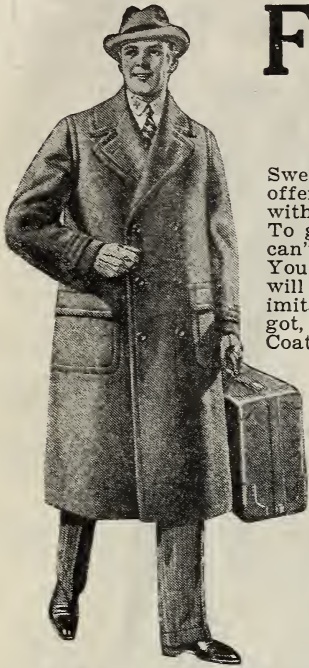
Same good Sweater to fit the youngsters and they will get a lot of good out of it, too.

Men's or Ladies' Sweater Coats

FREE With Each New Elephant Hide Raincoat

Biggest Raincoat Bargain I Ever Offered

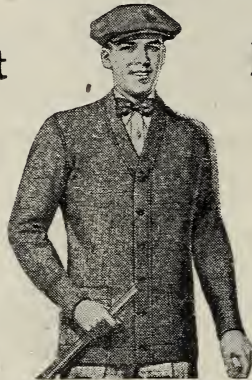
These are our regular Raincoats at the regular price with a Sweater Coat Free in the deal. Now, if you ever had a better Raincoat offer than this we've never heard of it. We made a special good deal with the manufacturer and are sharing it with you. But - don't wait. To get the Free Sweater Coat you must order before April 15th. We can't extend the time limit and so are giving fair warning right now. You can get the best raincoat you ever owned and the Sweater Coat will be yours Free. Genuine Leatherette Raincoats, too, not any cheap imitation. If you don't say it's the biggest money's worth you ever got, it's no trade and you can get your money back by returning the Coat and Sweater. But don't wait until it's too late. Order now.



Men's Raincoat
\$7.95

P.P. in Zones 2 & 3.

Sweater FREE



Lady's Raincoat
\$6.95

P.P. in Zones 2 & 3.

Sweater FREE



This is the man's full length Raincoat. Made of heavy Elephant Hide grained Leatherette. Guaranteed waterproof and guaranteed not to crack or peel. Double breasted style with roomy patch pockets, convertible collar and storm tabbed sleeves. Lined throughout with Genuine Fallow Suede. A real raincoat for all kinds of weather. Just as practical and serviceable as it is good looking. You'll be glad and proud to own it. Colors: Black or Brown. Sizes 34 to 48. Length 50 inches. Sweater Coat Free if ordered before April 15th.

The FREE Sweater Coat

Yes, this Sweater Coat goes free with every Raincoat ordered from us before April 15th. It's the newest 2 pocket sport style sweater. Knitted wristlets. Hems and seams are reinforced and doubled. Just the thing for Spring. Sizes 34 to 46, no larger. Sent Free with all Raincoat Orders sent in before April 15th.

And here is the Ladies' Coat. A modishly tailored Raincoat. Genuine Elephant Hide Leatherette. New shield yoke. All around removable belt. Shield tabbed pockets. Convertible collar. Semi-roll lapels. And lined with that smooth and warm lining - real Fallow Suede. A beauty in every respect. Guaranteed waterproof. Won't crack or peel. Ideal for sport wear, auto trips, etc. as well as in damp rainy weather. Colors: Red, Blue, Black, Brown, Green or Champagne. Sizes 32 to 46. If you order before April 15th we send the Sweater Coat to you Free.

Savings in Men's Underwear

Men's Summer-Weight Knit Union Suits

\$1.00 each 3 for \$2.75

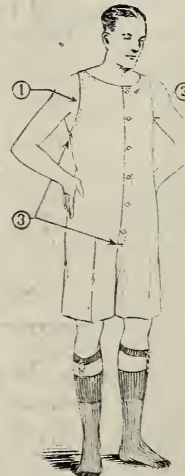
Gauze knit, cream-colored, fine cotton union suits for summer wear. Short sleeves and ankle-length legs. Very flexible, spring-needle knit makes this suit fit closely. It doesn't get loose and baggy at the ankle or cuff. Good pearl buttons, well-made button-holes, shell-stitch edge trim. Extra good value. Sizes 36 to 50.

Nainsook Union Suits Men's Athletic Style

\$1.00 each 3 for \$2.75

Extra good grade of white barred nainsook, cut large and roomy to fit loosely. The coolest of all hot-weather underwear. Our suit has an elastic snubber across the knit waist band back to take up all the strain and keep it from tearing in the small of the back. Sizes 36 to 52.

All underwear prices include postage anywhere in 2nd or 3rd zone.



Men's Work Coats \$4.50

Postpaid in Zones 2 & 3.

Good tough moleskin coats with blanket cloth lining and corduroy, military style collar. Coat is double breasted. Dark tan color. The shoulders and tops of sleeves have an inner lining of oiled slicker to keep you dry when it rains. Two side pockets with flaps, leather-reinforced. Sizes 36 to 48.

Moleskin Work Pants

Heavy Weight \$2.75 Summer Weight \$2.50

Postpaid in Zones 2 & 3.

Narrow black and grey striped pattern. Best quality moleskin. Tailored like dress pants - cuff-bottom, lined waist, belt loops and suspender buttons. Stout canvas pockets with finished edges. Strong seams. State waist measure and length wanted.

Vegetable Soup

Grow a supply of vegetables to be used in Vegetable Soup. You can store many of them or you can cook them and can them all ready to use. Beans, both the Limas and other beans, carrots, cabbage, celery, onions, tomatoes, turnips, peas, parsley, salsify and okra are the vegetables most generally used for this purpose. When canned they can be combined so that about all you need do is to add water and the soup stock.

Good vegetable soup is tasty and wholesome. You can almost make a meal on it. It is especially good when you can fix it up to suit your own family. A dish served piping hot comes in mighty handy on a cold day.

Make up a combination of vegetables for soup that your family will like. Grow them and can them all ready for use. A millionaire couldn't have anything better.



A Profitable Garden

This is a very pretty vegetable garden and you can tell that it repaid its owner many times. Mrs. B. M. Lesan of Mt. Ayr, Iowa is responsible for this fine little plot. She writes,

"My husband wants me to send his garden picture as it tells the story better than he can tell it. This garden is 18 feet square. My husband was sick and all the cultivation his garden plot got was done with the butcher knife sticking in the post."—Mrs. B. M. Lesan, Mt. Ayr, Iowa.

Garden Cared for by Blind Man

"Here is a garden letter from a blind man, as he wants me to write it. He has a small garden. However, he gets lots of good from it. Here is what he is able to do without seeing one ray of light:

He has about 80x70 feet of ground and he plants this part of it in potatoes. The rows of potatoes were about 80 feet and there were 16 of them. He got 32 bushel of potatoes and he did all the work himself, and he is not a young man either. He planted the potatoes, tended them and dug them, and put them in the cellar all by himself.

Mr. Stout, the blind man, helped in the vegetable garden also by setting out the plants."—William Stout & Wife, Sperry, Ia.

New Ways to Use Onions

"There are very few vegetables which are not improved by the addition of an onion or two. I cook them in boiled cabbage, green and dried beans. Slice one in potatoes that are frying. Cook one with tomatoes and when done add some stale light bread crumbs.

Use them in Spanish rice, meat dressings, in potato soup and vegetable soup. And fry the green tops with eggs. Also use them in lettuce salad, potato salad, dried bean salad and cabbage slaw. I canned some last summer when they were small, about an inch through, and they look so pretty in the jars and are just as good as they look."—Mrs. Jno. O. Grisham, Salisbury, Mo.

Pretty and Dainty Rayon Underwear

Comfortable, Delicate & Economical

The silky softness of this rayon underwear will be a real delight to you. It is just lovely. So neatly tailored and so adroitly trimmed. And the colors are unusually dainty. Really it is not extravagance to enjoy this lovely underwear because it is surprisingly durable and we guarantee

every Rayon garment we sell not to shrink or fade. Now look up your favorite in the list below and accept our absolute guarantee that you will be satisfied with every Rayon garment you order from us. Enormous volume has made these low prices possible. We are sure you will make substantial savings by ordering from us.

Bloomers \$1.10

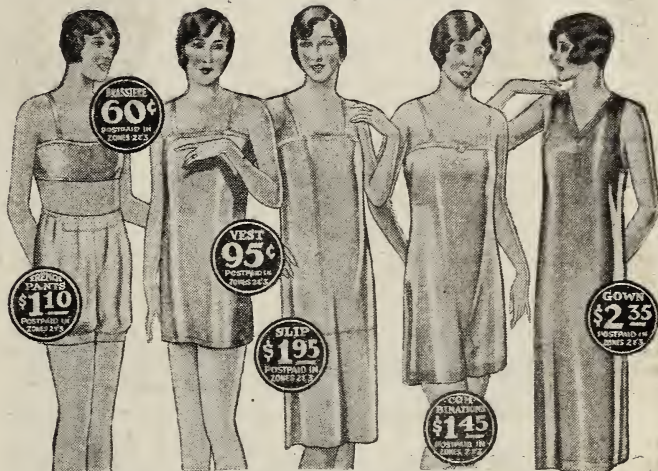
Colors: Peach, Flesh, Nile. Sizes 25, 27, 29. Practically full of long wear and are properly tailored for comfort. All seams are flat locked. Double reinforced crotch. Full life elastic at waist and knees. \$1.10 Postpaid.

Slip \$1.95

Colors: Peach, Flesh, Nile, White. Sizes 36, 38, 40, 42, 44. Lovely, long wearing slip of heavy quality Rayon. Wide shadow-proof hem. Inverted pleats on the sides to give necessary fullness over hips. Shoulder straps and bodice top picotéd. Shoulder straps of self material.

Vest 95c

Colors: Peach, Flesh, Nile. Sizes 33, 38, 40, 42, 44. Made of same lovely material used in the Bloomers and French Pants. Long in length. Shoulder straps of self material are picotéd. Rayon draw.



These Prices Include Postage to Zones 2 & 3.

French Pants \$1.10

Colors: Peach, Flesh, Nile. Sizes 25, 27, 29. Designed with flat yoke front for smoothness. Double reinforced crotch. Elastic at waist in back. Pant legs finished with wide cuff.

Brassiere 60c

Colors: Peach and flesh. Sizes 32, 34, 36, 38. Bandeau Brassiere of strong Rayon. Silk tape straps. Hooks in back. Firmly woven. 60c, postpaid.

Night Gowns \$2.35

Colors: Peach, Flesh, Nile. Sizes 15, 16, 17. This exquisite gown is made of finely knitted Rayon. The V-neck and deep armholes are finished very attractively with wide bands of contrasting color. A dainty ribbon rosette adds the finishing touches to this beautiful gown. Neck and armholes picotéd edge.

Brassiere & Bloomer Combination \$1.95

Colors: Peach, Flesh and Nile. Sizes 32, 34, 36, 38. This is a Brassiere and Bloomer combination in one lovely fitting garment, made of beautiful heavy Rayon. The Brassiere part is made fit. It fastens down the side with hooks and eyes. Picotéd shoulder straps of self material. Elastic at the knees. Reinforced crotch.

Combination \$1.45

Colors: Flesh color with band of blue. Peach color with band of green. Nile color with peach cuffs. Sizes 36, 38, 40, 42, 44. The favorite with all women—the Combination suit with the attractive comfortable knee band of self material of a pretty contrasting color. An exquisite rose bud adorns the bodice top. Double top and self material. Shoulder straps are also very daintily picotéd. Rayon draw.

Crop Succession

Growing three or four crops on one piece of ground in one season is interesting but not important to the farmer who has plenty of land.

However, for the town gardener or for those who have limited garden space it is worth studying.

It adds interest to the work and a great deal of fun can be had in seeing how many crops can be grown from a given space.

Rich soil is necessary and overhead irrigation is very desirable.

Plant radish seed very thin and follow at once with parsnip, carrot, parsley, asparagus, onion or leek right in the same row. Pull the radish and use when it is large enough.

Plant Beets, Kohl Rabi, Lettuce, Mustard, Spinach, Onion Sets, Radish or early Beans or Peas between rows of late cabbage, Melons, Squash or Tomatoes.

Plant radish very early followed by early Cabbage plants set every two feet in the row and after the cabbage is off sow late turnips or Chinese Cabbage.

Plant two rows of Potatoes between each two Watermelon rows and dig potatoes after the Melons are gone.

Follow early Peas and Beans with late Cabbage.

Celery may follow early Peas, Beans, Lettuce, Radish or Spinach.

Plant late turnips in vacant spaces about the garden.

Time to Plant

You can plant the following vegetables as soon as you can make garden:

Asparagus	Lettuce
Beets	Leek
Brussel Sprouts	Mustard
Cabbage	Onion Seed
Cauliflower	Onion Sets
Celery	Onion Plants
Celeryiac	Parsnip
Carrots	Parsley
Endive	Peas, Smooth
Kale	Radish
Kohl Rabi	Salsify

The more tender vegetables as a rule should not be planted until the weather is settled and the ground is warm:

Beans	Okra
Cucumber	Peas, Wrinkled
Corn, Sweet	Pepper
Egg Plant	Pumpkin
Peanuts	Squash
Muskmelon	Tomato
	Watermelon

There are exceptions to the above and there are also exceptional seasons, some warm and some cold.

The lay of the land and the character of the soil have a great deal to do with the time to plant.

A north slope will not warm up as quick as a southern exposure.

A stiff clay or gumbo soil will be cold when a loose black loam, full of humus, will be ready for the seed.

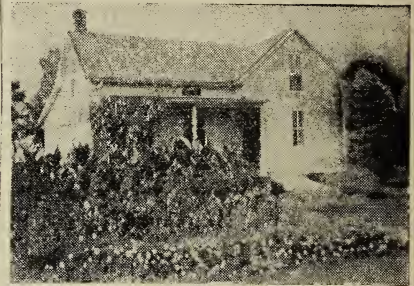


Northern Grown Ohio and Cobbler Potatoes State Certified

Yes, we will have Seed Potatoes for you this Spring and we want you to know that our potatoes will be State Certified in Sealed Bags. This means the fields where the seed was grown have been inspected by the State and that the seed itself has been inspected before it was sacked. I don't know any surer way to get pure, disease free, seed. It costs a little more but it's a case where a very little more cost puts on a lot more real quality.

You know that both Irish Cobbler and Early Ohio are heavy yielders. They are the old standbys. Our supply will be ready for Delivery about March 20th if the weather is so we can ship them safely.

Price \$2.75 per bushel F.O.B. Shenandoah in lots of 2 bushel or more. Less amounts \$3.00 per bushel on account of resacking.



A Restful Beautiful Home

"I am sending you a picture of our house painted with your paint in the spring of 1928. This is an old building and hadn't been painted for 10 years. It looked pretty bad, but is beautiful now and the paint doesn't rub off either. The flowers were grown from bulbs and seeds that came from your company, too, and we think they're certainly beautiful. We will surely buy more paint from Henry Field whenever we need it."—Harvey E. Diller, Washta, Iowa.

You folks can all take a lesson from Harvey Diller just by looking at the picture he sent us of his home. The paint is important. Mighty important. And if you are living in a shabby home you ought to feel a little ashamed to be so neglectful of your property. But the thing Mr. Diller has done is combine painting up with sprucing up. The flowers and the lawn make a finishing touch to a home that can't be beat. Better put more flowers around your house this year. Put in some shrubbery and fix up the lawn if it needs fixing.

When you have put on the paint, planted the flowers and shrubs, and have a good lawn you will find out your place is worth a lot more than it was. The increase in value will exceed the cost of all you've done by a long ways.



Come and See Us Whenever You Can

There are lots of places to go but I don't know where you will find any more welcome than right here at KFNF. We are not the fussiest sort of folks but you will travel a long ways before you find a friendlier crowd than our Seed House family. We have acres of flowers for you to see and will do all we can to make your visit pleasant.

I guess the flower gardens get first place but everyone enjoys watching the broadcasting, also. And our zoo, including a cage of monkeys, is always fun for grown-ups as well as children.

Anyway, KFNF is a kind of County Fair for crowds all year and when the weather is extra good it's more

like the State Fair. I think they like us Seed House folks.

The picture above shows the Seed House and gardens and on the left you can see part of one of our Cabin Camps. We have 65 or 70 cabins and they are kept full most of the summer. If you want a cabin for your visit better write a week or two ahead to be sure ours aren't full. Shenandoah folks are friendly, though, and we can most always find someplace for everyone to stay. There are other Cabin Camps and lots of Rooms for rent.

Come and see us whenever you can. The latch is out and you're invited and we'd like to have you come.

H. F.

Raise your own Groceries

I always did believe that it is just plain extravagance not to put in a big vegetable garden. I think that the acre or two of vegetables is about the most profitable ground a fellow can plant. It's just like planting a Grocery Store in your back yard. It takes a little work but it sure pays you back time and time again.

I say raise your own groceries. They are better than any you can buy. More crispy and fresh and they taste better, too. Plant lots of them and put up the surplus for winter use. Of course, we can sell you mighty fine

Canned Goods and will be glad to do it. But you'll save money by canning your own groceries.

Plant a good big garden. Live off of the fresh vegetables. Get a Pressure Cooker and a Can Sealer. Then, put up your surplus. Besides having better things to eat than money can buy you will save enough to pay the costs and then some. It all starts with a good big garden. So, order your seeds from us. They are proven seed and you can count on a heavy yield if you do your part.

Condensed Price List of Garden Seed

BEAN PRICES

Postpaid Prices		Oz.	¼lb.	1lb.
117—New Stringless Yel. Pod	\$0.05	\$0.15	\$0.45	
121—Early Wonder Wax	.05	.15	.45	
113—Bound Podded Kid. Wax	.05	.15	.45	
107—Stringless Green Pod	.05	.15	.45	
121—Bound Pod Valentine	.05	.15	.45	
109—Field's First Early	.05	.15	.45	
114—Challenge Black Wax	.05	.15	.45	
131—Dutch Caseknife	.05	.15	.45	
134—Kentucky Wonder	.05	.15	.45	
120—Sure Crop Wax	.05	.15	.45	
130—Cutshort or Cornhill	.05	.15	.45	
144—Bountiful	.05	.15	.45	
123—Improved Mo. Wonder	.05	.15	.45	
139—Kentucky Wonder Wax	.05	.15	.45	
128—Red Kidney	.05	.10	.35	
102—White Wonder	.05	.10	.35	
126—Fordhook Bush Lima	.05	.15	.45	
127—Henderson's Bush Lima	.05	.15	.45	
140—Extra Early Lima	.05	.15	.45	
142—Early Jersey Lima	.05	.15	.45	

Write for wholesale prices on large quantities.

TABLE BEETS

Postpaid Prices		Pkt.	Oz.	¼lb.	1lb.
604—Detroit Dark Red	\$0.10	\$0.20	\$0.50	\$1.25	
607—Early Wonder	.10	.20	.50	1.25	
603—Crosby's Egyptian	.05	.15	.40	1.00	
608—Extra Ea. Eclipse	.05	.15	.40	1.00	
601—Blood Turnip	.05	.15	.40	1.00	

MANGEL BEETS

Postpaid Prices		Oz.	¼lb.	1lb.
620—Giant Sludstrup	\$0.07	\$0.25	\$0.75	
619—Mammoth Long Red	.07	.25	.75	
616—Giant Feeding Sugar	.05	.20	.65	

CABBAGE

Postpaid Prices		Pkt.	Oz.	¼lb.	1lb.
522—Early Jersey Wakefield	\$0.10	\$0.30	\$0.80	\$3.00	
521—Early Flat Dutch	.05	.25	.75	2.75	
516—All-Head Early	.10	.30	.80	2.75	
527—Norseman	.10	.50	1.50	5.00	
532—Hollander or Danish Ballhead	.10	.40	1.50	5.00	
538—Surehead	.10	.30	.80	2.90	
535—Prem. Flat Dutch	.05	.30	.80	2.90	
519—Copenhagen Market	.10	.40	1.25	4.00	
524—Golden Acre	.10	.50	2.00		
531—Corn Belt	.05	.30	.80	2.90	

222—BROCCOLI,

Calabrese	.15	.50		
-----------	-----	-----	--	--

CAULIFLOWER

Postpaid Prices		Pkt.	¼oz.	1oz.	¼lb.	1lb.
556—Dry Weather or Copenhagen	\$0.15	\$0.60	\$2.00	\$7.50		
558—Early Snowball	.15	.60	2.00	7.50		

CELERY Postpaid Prices

Postpaid Prices		Pkt.	Oz.	¼lb.	1lb.
661—Giant Pascal	\$0.05	\$0.35	\$1.00		
662—Golden Self-Blanching	.10	.50	1.75		
660—Golden Plume	.15	1.00	3.25		

CARROTS

Postpaid Prices		Pkt.	Oz.	¼lb.	1lb.
690—New Coreless Chantenay	\$0.15	\$0.35	\$0.85		
626—Chantenay	.10	.15	.40	1.25	
627—Danvers Half Long	.10	.15	.40	1.50	
629—Oxheart	.05	.10	.30	1.00	

CUCUMBERS

Postpaid Prices		Pkt.	Oz.	¼lb.	1lb.
351—Chicago Pickle	\$0.10	\$0.15	\$0.40	\$1.25	
364—Dark Green Slicer	.10	.15	.40	1.25	
354—Early Cluster	.05	.15	.35	1.00	
357—Evergreen	.10	.15	.40	1.25	
356—Heinz's Pickle	.10	.20	.45	1.50	
360—Henderson's Perfected White Spine	.05	.15	.35	1.00	
361—Imp. Long Green	.10	.15	.40	1.25	

EGG PLANT

Postpaid Prices		Pkt.	Oz.	¼lb.	1lb.
656—Black Beauty	.10	.40	1.25	4.50	
658—New York Purple	.10	.40	1.25	4.50	

LETTUCE

Postpaid Prices		Pkt.	Oz.	¼lb.	1lb.
509—Black Seeded Simpson	.10	.15	.45	1.50	
512—Cabbage Head	.10	.20	.60	1.75	
510—Grand Rapids	.05	.15	.45	1.50	
513—Early Curled Simpson	.10	.15	.45	1.50	
511—Prizehead	.10	.15	.45	1.50	
504—Hanson	.05	.15	.45	1.50	
505—Iceberg	.10	.15	.45	1.50	
507—New York or Wonderful	.10	.25	.65	2.25	

ONIONS Postpaid Prices

Postpaid Prices		Pkt.	Oz.	¼lb.	1lb.
303—Riverside Sweet Spanish	.10	.30	.90	2.75	
304—Giant Prizetaker	.10	.20	.60	2.00	
308—Ohio Yel. Globe	.05	.20	.60	2.00	
305—Large Red Globe	.10	.20	.60	2.00	
306—Mountain Danvers	.10	.25	.75	2.25	
316—Mtn. Red Globe	.10	.25	.75	2.25	
311—Silverskin or White Portugal	.05	.25	.75	2.50	
314—Yel. Globe Danvers	.05	.20	.60	2.00	
307—New Queen	.05	.30	1.00	3.00	

PEANUTS Postpaid Prices

259—Early Northern	\$0.15	\$0.35	\$1.60		
--------------------	--------	--------	--------	--	--

PARSNIPS

Postpaid Prices		Pkt.	Oz.	¼lb.	1lb.
203—Hollow Crown or Long Smooth	\$0.10	\$0.15	\$0.35	\$1.00	
204—Imp. Half Long	.05	.10	.25	.85	

PEAS

Postpaid Prices		Oz.	¼lb.	1lb.
146—Extra Early Alaska	\$0.05	\$0.15	\$0.40	
143—Improved Extra Early	.05	.15	.40	
151—Laxtonian	.05	.15	.40	
152—Little Marvel	.05	.15	.45	
147—Fillbasket	.05	.15	.40	
159—Dwarf Champion	.05	.15	.40	
160—Dwarf Gray Sugar	.05	.15	.40	
163—Stratagem	.05	.15	.40	
167—Alderman	.05	.15	.40	
157—Everbearing	.05	.15	.40	
149—American Wonder	.05	.15	.40	

(Prices Continued on Next Page)

Bermuda Onion Plants

A Very Mild Sweet Onion

You can order as many bunches of 300 or 800 or 1,000 as you please, but we cannot break them up in small amounts. Price, 300 for 45c; 800 for \$1.00; 1,000 for \$1.25; 2,000 for \$2.25, postpaid. Crate of 6,000 for \$4.00, not prepaid.

We handle the Yellow Bermuda only because it is best for the home gardener. It yields and keeps better than other Bermuda onions and is very sweet and mild. Our plants will reach you fresh and in fine condition.

Order the plants early. We turn down orders every spring that reach us after we are sold out. Set them out when you make your first garden. They will stand a little frost without injury. They must be ordered in even amounts as specified below, as they come packed in no other way.



FREE Gladiola Bulbs for you

(See Other Side of this Coupon)

Price List Continued

CANTALOUPE and MUSKMELONS

	Pkt.	Oz.	1/4lb.	1lb.
340—White Seeded		.20	.45	1.35
Postpaid Prices				
332—Field's Daisy	.10	.15	.50	1.60
330—Ex. Early Hanover	.15	.25	.75	
334—Greely Wonder	.10	.15	.50	1.60
345—Hearts of Gold	.10	.15	.45	1.50
333—Hale's Best	.05	.15	.40	1.25
337—Honey Dew	.05	.15	.50	1.50
342—Perfection	.10	.15	.45	1.50
345—Pollock's Ten-				
Twenty-five				
341—Osage	.05	.15	.45	1.50
325—California Cream				
Cantaloupe				
329—Edward's Perfecto	.05	.15	.40	1.25
326—Banana	.05	.15	.40	1.25

SWEET PEPPERS

	Pkt.	Oz.	1/4lb.	1lb.
639—Early Sweet Pimento	.10	.60	1.75	
641—World Beater	.10	.50	1.50	
646—Early Sweet Neapolitan	.05	.40	1.00	
647—Harris Early Giant	.15	.60	1.75	
645—Ruby King	.05	.40	1.00	
636—Long Red Cayenne	.05	.40	1.00	

POPCORN

	Oz.	1/4lb.	1lb.
195—Japanese Hulless	\$0.05	\$0.10	\$0.35
197—South American	.10	.20	.60

PUMPKINS

	Pkt.	Oz.	1/4lb.	1lb.
762—Big Tom	\$0.05	\$0.10	\$0.25	\$0.75
766—Small Red Sugar	.10	.15	.40	1.00
761—Buff Pie	.05	.10	.25	.75
763—Large Cheese	.05	.10	.25	.75
764—Yankee Field or Cow				
Pumpkin				
	.05	.10	.25	.75

RADISHES P.P. Prices

	Pkt.	Oz.	1/4lb.	1lb.
453—All-Season Mixt.	\$0.05	\$0.10	\$0.30	\$0.85
437—Crimson Giant	.10	.15	.40	1.00
440—Early Scarlet Globe	.05	.15	.40	1.00
439—Early Round Dark				
Red				
	.10	.15	.40	1.00
449—Lady Finger	.05	.10	.30	.85
448—White Icicle	.10	.15	.45	1.00
444—Scarlet Turnip White				
Tip				
	.10	.15	.40	1.00
446—Saxa	.10	.20	.50	1.25
451—Long Scarlet	.05	.10	.30	.85
454—Chin. Rose Winter	.05	.10	.30	.85

SQUASH P.P. Prices

	Pkt.	Oz.	1/4lb.	1lb.
753—Kitchenette				
Hubbard				
	.10	.15	.40	1.25
752—Table Queen or				
Des Moines				
	.10	.15	.40	1.50
736—Banana	.05	.15	.40	1.50
740—Delicious	.05	.15	.40	1.50
745—Genuine Hubbard	.10	.15	.40	1.50

739—Cushaw or				
Crookneck				
	.05	.10	.35	1.15
743—Fordhook	.05	.10	.30	.90
747—Early White Bush				
Scalloped				
	.05	.10	.35	1.15
751—Summer Bush				
Crookneck				
	.05	.10	.30	.90

SALSIFY

	Pkt.	Oz.	1/4lb.	1lb.
208—Mammoth Sandwich				
Island				
	.10	.20	.60	2.25

SWEET CORN

	Oz.	1/4lb.	1lb.
189—Country Gentleman	\$0.05	\$0.15	\$0.35
180—Early Champion	.05	.15	.35
181—Early Evergreen	.05	.15	.35
183—Early Mayflower	.05	.15	.35
177—Golden Bantam	.05	.15	.35
178—Mt. Crown			
Golden Bantam			
	.05	.15	.35
183—Stowell's Evergreen	.05	.15	.35
174—Early Sunshine	.05	.15	.40
187—White Evergreen	.05	.15	.35

TOMATOES

	Pkt.	Oz.	1/4lb.	1lb.
411—Langdon's Earliana	\$0.10	\$0.60	\$1.75	5.00
408—Bonny Best	.05	.40	1.25	4.00
410—Chalk's Ea. Jewel	.05	.35	1.60	3.50
402—Field's Early June	.10	.45	1.25	4.00
403—Pink Early June	.05	.40	1.25	4.00
401—Red Head	.10	.50	1.50	5.00
405—Marglobe	.10	.45	1.50	5.00
417—Livingston's Globe	.05	.40	1.25	4.00
415—New Stone	.10	.40	1.00	3.60
418—Ponderosa	.10	.50	1.50	5.00
419—Yellow Pear	.10	.50	1.50	5.00

SPINACH

	Pkt.	Oz.	1/4lb.	1lb.
229—Bloomdale Savoy	.05	.10	.25	.50
231—King of Denmark	.05	.10	.25	.55
261—Big Green Leaf	.10	.20	.40	1.00
212—New Zealand	.05	.15	.30	.85

TURNIPS P.P. Prices

	Pkt.	Oz.	1/4lb.	1lb.
803—Extra Early Milan	\$0.10	\$0.15	\$0.40	\$1.25
804—Early White Milan	.10	.15	.40	1.25
807—Purple Top Globe	.10	.15	.35	.75
806—Purple Top				
Strap Leaf				
	.05	.15	.35	.75
808—Rutabaga, Amer.				
Purple Top				
	.05	.15	.35	.75

WATERMELONS

	Pkt.	Oz.	1/4lb.	1lb.
704—Colorado Kleckley				
Sweet				
	.10	.20	.50	1.50
706—McIvors Wonderful				
Sugar				
	.05	.15	.35	1.00
709—Tom Watson	.05	.15	.35	1.00
710—Boy's Watermelon				
Collection				
	.15			

702—Golden Honey	.05	.15	.35	1.00
718—Irish Grey	.05	.15	.40	1.25
721—Giant Kleckley	.10	.15	.40	1.25
705—Kleckley Sweet	.05	.15	.35	1.00
703—Halbert Honey	.05	.15	.35	1.00
724—Field's Jumbo	.10	.15	.40	1.25
715—Ice Cream or				
Peerless				
	.05	.15	.35	1.00
717—Princess	.10	.15	.40	1.25



The Most Valuable Acre On the Farm

Those beans you pick by the basketful. The onions you store away by the bushel. The corn and tomatoes you can. These and all the other vegetables come from the most profitable acre on the farm - Your Vegetable Garden. You probably never give it the credit it deserves for being a little gold mine. I know we practically live on fresh vegetables from the time the first ones grow big enough to eat until frost kills them off.

Yes, your vegetable garden is one of the best money makers you have. And I want to say right now that whoever takes care of it and keeps successive crops of things growing straight through the summer deserves a big lot of credit.

If you don't think it's a money maker just figure up what it would cost you to live all summer without your own garden.

Of course, you want good seed. You want the best varieties, those that will be thrifty and yield heavy. And that's just what you'll get from me. Don't let anybody fool you about your garden because you can make it the best thing you've got on the place. And besides, it means a lot to grow your own stuff, have all you want of it and eat it or can it when it is fresh.

If you want to skimp some place, go ahead and do it. But don't skimp on the garden.

We Will Send You 3 Gladiola Bulbs FREE

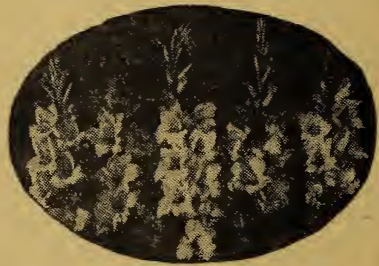
List here the names of 3 friends who are not already getting our catalog, and we will send it to them free.

Name -----
 Address -----
 Post Office -----

Name -----
 Address -----
 Post Office -----

Name -----
 Address -----
 Post Office -----

And don't forget to put your Name & Address below
 Your Name -----
 Address -----



We are always looking for more friends and customers and once a year or so I ask our old standbys to do us a favor along this line. So, if you will fill in the names and addresses of 3 of your friends or neighbors who don't get our catalog I will send you 3 Gladiola Bulbs Free - full blooming size bulbs, of course. I hope you will not send the names of folks who already get our catalog because it would be a waste of money for me to send them another.

Just fill in the names. Cut out the coupon and pin it to your letter or order. Don't forget to put your own name and address on the coupon, too. I'll send you the 3 bulbs free and be much obliged to you in the bargain.

H. F.

ORDER SHEET

Date

To Henry Field Seed Company, Shenandoah, Iowa

Name

P. O.

County State

Street Address

Shipping Station State

Mark in Square Which Way You Want Order Sent

Which ever way best Mail or Parcel Post Express Freight

Amount	Catalog No.	ARTICLES WANTED	PRICE

PLEASE CUT OUT ALONG THIS LINE

ORDER SHEET

Date

To Henry Field Seed Company, Shenandoah, Iowa

Name

P. O.

County State

Street Address

Shipping Station State

Mark in Square Which Way You Want Order Sent

Which ever way best Mail or Parcel Post Express Freight

Amount	Catalog No.	ARTICLES WANTED	PRICE

THE POSTOFFICE to which this catalog was mailed is in POSTAL ZONE

From Shenandoah Iowa

In Case Price is Wrong or Has Changed:—

Shall we fill exact amount ordered and adjust price later?.....Or shall we fill for the amount of money sent?.....
 If out of variety ordered do we have your permission to substitute equal or better in the nearest we can supply?.....

PLEASE ANSWER ABOVE INFORMATION EACH TIME YOU WRITE

Your Money's Worth or Your Money Back—
 It is mutually agreed and understood that any seeds or other goods ordered of us may be returned at any time within ten days after receipt, if not satisfactory, and money paid for them will be refunded, but we do not and can not in any way warrant the stand or the crop as they depend on so many conditions beyond our control. HENRY FIELD SEED CO.

The POSTOFFICE to which this catalog was mailed is in POSTAL ZONE

From Shenandoah Iowa

In Case Price is Wrong or Has Changed:—

Shall we fill exact amount ordered and adjust price later?.....Or shall we fill for the amount of money sent?.....
 If out of variety ordered do we have your permission to substitute equal or better in the nearest we can supply?.....

PLEASE ANSWER ABOVE INFORMATION EACH TIME YOU WRITE

Your Money's Worth or Your Money Back—
 It is mutually agreed and understood that any seeds or other goods ordered of us may be returned at any time within ten days after receipt, if not satisfactory, and money paid for them will be refunded, but we do not and can not in any way warrant the stand or the crop as they depend on so many conditions beyond our control. HENRY FIELD SEED CO.

PLEASE CUT OUT ALONG THIS LINE

Our Silk Hose Are Guaranteed

GUARANTEE—Buy our silk hose large enough. Wash them carefully in luke warm water with a pure, neutral soap. Then we'll guarantee them to wear in a manner to suit you. If you don't think you get your money's worth, we'll replace them free.

All sizes - 8½ to 10½ - in all colors

Colors:—Atmosphere, Champagne, Cuban Sand, Mistery, Sun Tan, French Nude, Allure, Breeze, Sand-dust, Evenglow, Silver Wing, Almora, Wrought Iron, Rose Taupe, Muscadine, Black, White, and many others.

Henrisilk Hose

\$1.00 per pair
3 pairs **\$2.75**

Postpaid in Zones 2 & 3.

Henrisilk Hose are guaranteed:— Pure thread silk, top to toe. Very fine knit, medium weight. Extra long, with 4-inch garter welt top and ravel stop thread. Reinforced foot. Narrowed ankle and instep makes them fit trimly giving the ankle a neat, slender appearance. Full 9-strand silk construction, seamed back and seamless foot. French panel heel.

De Luxe Hose

\$1.75 per pair
3 pairs **\$5.00**

These De Luxe Hose are our very finest. 45-gauge construction of pure silk in the popular, service-chiffon weight. 4-inch garter welt top. New narrow French panel heel. Reinforced foot and toe guard for longer wear. Full-fashioned construction, ooth foot and leg - the perfect shape knit right in so it can't come out.

Good Wearing Stockings for Boys & Girls

Fine Ribbed - 4 pairs \$1.00

Derby Ribbed - 3 pairs \$1.00

Postpaid in Zones 2 & 3.

Both numbers are good looking, made of long staple cotton lisle that

will give long service. The fine ribbed is very dressy and the derby ribbed has the wide welt rib so many mothers like. Both come in black or light sand color. Sizes 5 to 9½.

Women's Lisle Hose

4 pair \$1.00

Our Lisle Hose are medium weight, fine knit cotton lisle stockings for wear when you're working outdoors. Black or grain (light nude tan). Sizes 8½ to 10½.

Turkish Towels

6 for \$2.25.
12 for \$4.00.

Postpaid in Zones 2 & 3.

Heavy weave, double thread bath towels of great big size - 20 x 40. Choice of plain white or white with colored borders.

Camp Cots All-Metal Frame, sturdy and durable, covered with heavy canvas. Easily set up and taken down. Wt. 20 lbs. F.O.B. Shenandoah. Bargain at \$3.00.

Women's Wool and

Rayon Hose

3 pair \$1.50

Look like silk but really knit of wool and rayon threads. Just right for cool weather wear. Choice of black, light, medium or dark nude and light or dark grey. Sizes 8½ to 10½.

Pure Linen Towelling

10 Yards for \$2.45

Postpaid in Zones 2 & 3.

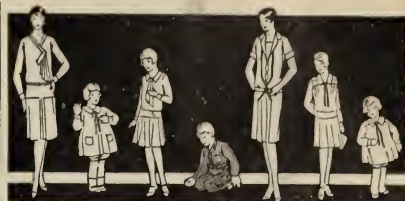
It will wear like iron for roller or hand towels. 18-inches wide, cream white, closely woven linen like you've been paying 30c to 32c a yard for.

Cotton Twill Towelling

10 yards for \$1.75

Postpaid in Zones 2 & 3.

Just like the good crash towelling we use for making the bags you get Field's Famous Coffee in.



Wash Dresses

3 for **\$2.95**

Postpaid in Zones 2 & 3.

We offer you the Season's very latest models in Wash Dresses. Lovely, colorful frocks designed in neat, catching ways. Every color of the rainbow to fill your order from. Every dress is Guaranteed Fade Proof and you get another one absolutely Free if yours fades. Just name your choice of colors. We guarantee to please you with the beautiful dresses we send you. All sizes from 16 to 52 same price.

Children's frocks of beautiful fade proof materials so cleverly made - at the same price, 3 for \$2.95 postpaid in Zones 2 & 3.

You can send your order entirely at our risk. If we can't fill it to delight you with styles and patterns and colors then you can certainly send them right back for a full refund. Write for special illustrated circular showing in detail these 12 different models of our Wash Dresses.

Write for Our New Big Circular Showing You Very Latest and Loveliest Dresses.

About The Roses

The Rose situation did look very dark indeed, during December and January. It began to look as though we were going to have to disappoint our customers on Roses this year. However, everything worked out alright and unless we have simply an enormous demand for Roses this year we believe we can fill all orders.

Please turn again to page 37 in the 1930 catalog and read over what is said there about the Beginners' Rose Collection. That is really a very remarkable offer and is the best chance for you to get a start of fine Roses at a low price.

Next to that Beginners' Rose Collection of 12 named varieties for \$3.50, I would recommend the collection of Roses illustrated in colors on the inside back cover of the Spring catalog. That is about the finest assortment I know how to make and consists of some Hybrid Teas, some Climbers and some Hybrid Perpetuals, and you will note that it is a very well balanced collection of colors. Just imagine getting one each of the 14 varieties pictured there in colors for \$4.00 postpaid.

In order to make sure of getting your Roses this year it would be a good idea to get your order in at once before we are sold out on some varieties, as we most certainly will be before the season is over.



A Nice Bunch of Furs

Here's a picture of a nice catch of furs by Harry Ave, Auburn, Nebraska. We sold thousands and thousands of skins for our trapper friends this year, hundreds of separate shipments every day during the season. Our friends say we got them the best prices of anybody. We'll be giving you the same good service in marketing your Wool this year. Better see what we can do for you before you sell or contract to sell.

Cucumbers Along the Garden Fence

"The early cucumbers, I made hills along the fence, where it was too close to plow. And, such a yield of cucumbers! I canned 75 qt. for sweet pickles, besides what we sliced and put a lot in the mixed pickle, and gave away probably 2 or 3 bushels.

We live in a small town and this was my first experience in gardening alone. We have quite a lot of fruit here also and when winter came I had canned around 450 qts. of fruit and vegetables, so our living has cost very little this winter."—Mrs. Leota Shupe, Lacona, Iowa.

Day Ounces Instead of Packets

"We have found that right now is the ideal time to make out the seed order and we find it much cheaper to buy our seeds by the ounce or pound, especially the large seeds. Then if a freeze or other disaster kills the first planting the other seeds will be ready to plant, where if one had to wait to send again it would mean several days lost.

We bought three pounds of Little Marvel pea seed from you last year and I believe paid 85c for them. We used them a month as I planted three diff rent times, and sowed ½ gallon of shelled peas each day. There are four in our family and we had all we could use for two meals a day all the time they lasted. I canned 50 quarts for ourselves and friends canned 32 quarts from our vines, and I sold enough to pay for the seed. Could have sold all but that was not what we raised them for."—Mrs. F. E. Prall, Mt. Sterling, Iowa.

Mrs. Davidson's Kentucky Wonders

"I heard you read a letter from a woman telling about her beans. I think I can beat her on the beans. I sent to Shenandoah and got one pound of Kentucky Wonder beans. We planted some that spring but the rabbits ate them. Last spring we planted what we had left. We had two rows 60 feet long of those. We had all we wanted to use for two and gave lots to our neighbors. We picked seven bushels to can and when it turned cold we picked two and one-half bushels. Everyone that saw those beans thought they were the finest they ever saw."—Mrs. Robt. Davidson, Cumberland, Iowa.

Money in Muskmelons

"I ordered three 1-ounce packets of muskmelon seed from you for about ten square rods of ground. These were tended in the usual way. The first ones were sold 3 for 25c. As they grew more numerous, which they certainly did, I received 75c per dozen at the hotel. We had all we could use, gave away about a wagon load and many rotted in the patch. I received \$20.00 off that little strip of land. The cost of the seed was 40c."—Mrs. C. E. Spencer, Reger, Missouri.



Mrs. Abbos' Beautiful Yard

You can all have a lovely yard like this one that Mrs. J. Abbos has at Ames, Iowa. Plenty of lawn grass seed, some bushes and flowers. Then just a little care to keep it all coming. And you'll find it's sure worth it.

Vegetables Pay the Groceryman

Mrs. Pearl Ulrich, Lawrence, Kansas, gives a long list of vegetables she grows in her garden and then says:

"Now what is left to buy in the grocery line? Nothing, but sugar, coffee and flour. If that isn't making money, from a garden what is?"

With this plan it doesn't matter how much of an over-production and slump in prices there is, you really are getting attractive prices for your wares right at home, and no marketing to do either, which takes too much time for a busy farm woman."

Now, your egg money can be spent for other necessities instead of groceries. This plan will be hard on money loaners, grocery men and doctors (as vegetables keep you healthy), but we should not worry. We farmers have had our hard times.

Our families are fed well balanced meals, which gives health and pep; our hired help, being well nourished gives us good service—all from that little garden. Let the Garden pay the Grocery bill, and help lift the mortgage."—Mrs. Pearl Ulrich, Lawrence, Kansas.

Style and Comfort in our Women's Shoes

No. 10-11 \$4.60 No. 3 \$4.60 No. 7 \$4.60 No. 9 \$4.60

NO. 12 AND NO. 13 Stylish 2-Lace Model with Covered Heel \$5.85 PAIR POST PAID ZONES 2 AND 3

No. 2 \$3.40 No. 1 \$3.40 No. 14 \$4.85 No. 4 \$4.60

No. 3 — A comfortable oxford for home wear. Black kid, broad, flat heel rubber capped. Roomy round toe. Sizes 3½ to 9. Widths: C-E. \$4.60.
 No. 4, 5, 6 — No. 4 is Black kid. No. 5 is brown kid. No. 6 is patent leather. Fancy cut-out tie, leather heel, rubber capped. Sizes 3½ to 9. Widths: A-C-E. \$4.60.
 No. 7 — Three button oxford with five strap, cut-out front, medium heel of solid leather, rubber capped. Genuine kid leather. Sizes 3½ to 9. Widths: A-C-E. \$4.60.
 No. 9 — Sport Oxford of tan calf with reptile leather trim. Medium heel, plain toe - a popular model for young women and school misses. Sizes 3½ to 9. Widths: A-C-E. \$4.60.
 No. 10 & 11 — A three eyelet tie slipper of fine kid. No. 10 in black, No. 11 in brown. Rubber top on leather heel. Graceful tongue. Sizes 3½ to 9. Widths: AA-A-B-C-E. \$4.60.
 No. 12 & 13 — Our most beautiful shoes - two eyelet slippers of best kid. No. 12 is black; No. 13 patent leather. Grey kid lining to protect the stockings. The new Avenue last is a truly beautiful model. Sizes 3½ to 9. Widths: AAA-AA-A-B-C-E. \$5.85.
 No. 14 — A stylish outside model for large women. Corrective arch construction, of course. Black kid. 4 eyelet tie. Medium heel, rubber capped. Sizes 3½ to 10. Widths: E-EEE. \$4.85.

Corrective Arch Support Shoes

Our Radio Arch Shoes are designed to end foot-troubles and they have done it for hundreds of our customers. The arches are in-built to hold the bones of the foot in correct position and they are a real relief to broken or fallen arches. These arch support shoes are fine welts which means the uppers are built on the last and then attached to the soles by sewing. Can be re-soled readily and will hold their shape.

All the arch support numbers (except No. 9) are imported kid leather. Fine grain from South American skins. Soles are genuine oak leather and all real leather, too. Soles are waxed, not just painted. No nails are used. Compare their quality and style and workmanship. You'll find them equal to and better than shoes selling at much higher prices.

Make your selection from the models above. Order by number. We guarantee the fit and guarantee your satisfaction.

kid. No. 6 is patent leather. Fancy cut-out tie, leather heel, rubber capped. Sizes 3½ to 9. Widths: A-C-E. \$4.60.
 No. 7 — Three button oxford with five strap, cut-out front, medium heel of solid leather, rubber capped. Genuine kid leather. Sizes 3½ to 9. Widths: A-C-E. \$4.60.
 No. 9 — Sport Oxford of tan calf with reptile leather trim. Medium heel, plain toe - a popular model for young women and school misses. Sizes 3½ to 9. Widths: A-C-E. \$4.60.
 No. 10 & 11 — A three eyelet tie slipper of fine kid. No. 10 in black, No. 11 in brown. Rubber top on leather heel. Graceful tongue. Sizes 3½ to 9. Widths: AA-A-B-C-E. \$4.60.
 No. 12 & 13 — Our most beautiful shoes - two eyelet slippers of best kid. No. 12 is black; No. 13 patent leather. Grey kid lining to protect the stockings. The new Avenue last is a truly beautiful model. Sizes 3½ to 9. Widths: AAA-AA-A-B-C-E. \$5.85.
 No. 14 — A stylish outside model for large women. Corrective arch construction, of course. Black kid. 4 eyelet tie. Medium heel, rubber capped. Sizes 3½ to 10. Widths: E-EEE. \$4.85.

MODELS BELOW ARE NOT ARCH SUPPORT
 No. 2 — Two strap. Soft black kid. Heel 1½ inches high, and rubber capped. Sizes 3½ to 9, med. or wide. \$3.40.
 No. 1 — A 6-eye lace model made of soft black South American Kid. Rounding toe, low heel with rubber cap. Re-enforced shank. Hand turned flexible sole. Sizes 3½ to 9, med. or wide. \$3.40.

Strong, Tough and Comfortable Chrome Tanned Horse Hide



Sizes 5½ to 12

\$4.65

Postpaid in Zones 2 & 3.

These are genuine chrome-tanned horsehide shoes. They won't crack or peel and don't get stiff even after repeated wettings. They stay soft and easy on your feet. Made army-last style, the most comfortable of all. Important seams are triple sewed with pure silk and linen threads. Has genuine Goodyear welt. Rubber capped heels. Not a heavy shoe but heavy enough to outwear any you've ever had before. If you don't think so, send them back. Come only in a natural tan color. Either medium or wide. Sizes 5½ to 12. \$4.65, postpaid in Zones 2 & 3.

Just write your own guarantee. We know you never before got as much shoe for the money as we will send you.

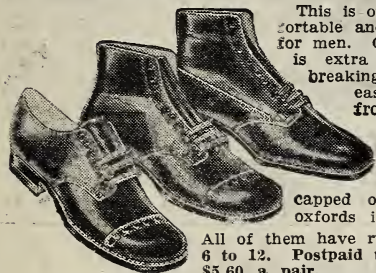
For Boys, Too --- \$3.25

Same horsehide leather as big shoe, but made outing style with oak leather soles which are both sewed and nailed. A real money-saver at \$3.25. Sizes 11½ to 5½.

IF YOU AREN'T SURE OF SIZE

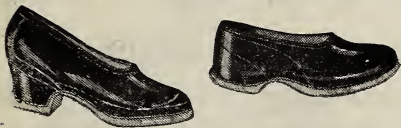
If you don't know your size just put your foot on a piece of paper and make a mark all around your foot. Be sure to keep the pencil straight up and down. We can fill your order from this and guarantee satisfactory fit.

Kangaroo Dress Shoe \$5.60



This is our idea of the most comfortable and best looking dress shoe for men. Genuine Kangaroo Leather is extra soft and flexible. No breaking in is required. They are easy and comfortable right from the start. While they are mighty neat in appearance you can count on long wear, too. The shoes come in either capped or plain toe. Also have oxfords in capped toe, as shown.

All of them have rubber capped heels. Sizes 6 to 12. Postpaid to you in Zones 2 & 3 at \$5.60 a pair.



Postpaid in Zones 2 & 3.

Dress Rubbers

Order Same Size As Your Shoes
For Women - \$1.00 Pair

Light weight except for heavy sole for long wear. Real, live rubber. Medium heel and toe to fit all shoes like our Arch Support models. Fit and satisfaction guaranteed. Guarantee you'll know they're a bargain, too.

For Men - \$1.35 Pair

Light enough for dress wear but with heavy soles. Made of long-wear rubber. The medium toe and the special edge on the soles insures a smooth, snug fit on shoes of various widths. A money saver, guaranteed to please you in every way or no trade.

Horsehide Boot

Men's Sizes

Boys' Sizes

\$7.60

\$5.60

6 to 12

3½ to 5½

Postpaid in Zones 2 & 3.

Here is a real boot bargain, one that will give you a long lot of real comfortable service. Genuine Horsehide Leather, from top to toe. Will not get stiff. Silk and linen stitchings. Back is reinforced the full length of the 16 inch top. Medium and wide lasts. All sizes. If you want all there is in boot comfort and wear, send along your order. Satisfaction guaranteed.



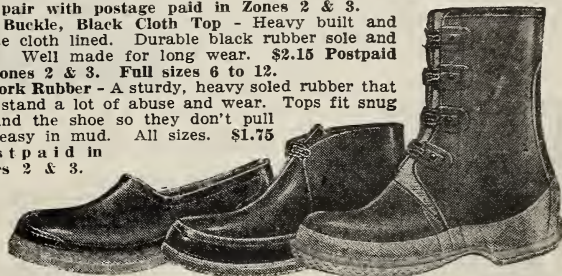
Overshoes and Work Rubbers

New Low Price, \$3.50 The new live rubber which goes into our 4-buckle overshoe is the

toughest made. They are cured by a live-steam process which closes all the pores and takes out every air bubble, making them genuinely water-proof. The tops are very flexible; will stand a world of wear. Fleece cloth lining. The bottoms are extra heavy and have a big rolled-edge sole. The non-skid bottom is a feature, too, and will wear well. The instep is especially designed to make the shoes easy to put on and take off, besides adding strength to the shoe. The buckles deserve a word of praise, too, because they are put on in such a way that they won't punch through the rubber. All full sizes from 6 to 12 are \$3.50 per pair with postage paid in Zones 2 & 3.

1 Buckle, Black Cloth Top - Heavy built and fleece cloth lined. Durable black rubber sole and heel. Well made for long wear. **\$2.15 Postpaid in Zones 2 & 3. Full sizes 6 to 12.**

Work Rubber - A sturdy, heavy soled rubber that will stand a lot of abuse and wear. Tops fit snug around the shoe so they don't pull off easy in mud. All sizes. **\$1.75 Postpaid in Zones 2 & 3.**



10 Beautiful Souvenir Postcards

10¢ Postpaid Set of 10 in Colors.

Ten separate postcards showing KFNF Studio, Seed House Buildings and acres of beautiful flowers. All different. All 10 sent to you postpaid for 10¢.

Comfort Materials

20 yards of Challie.
2 - 3 lb. Batts.
2 - Balls Floss.

\$5.00

Postpaid in Zones 2 & 3.

Really good challies in pretty patterns - good clean cotton battings - 3 lbs. stitched batts and mercerized floss for tying.

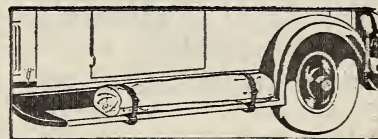
Apron Material Offer

\$1.50

4½ yards of English Print - 3 pieces of 1½ yds. each. Also 3 bias tapes and 1 spool thread to match each piece.

Postpaid in Zones 2 & 3.

This is our lovely 36-inch English Print. You mention the colors you want and we'll do our best to please you.



Luggage Carrier

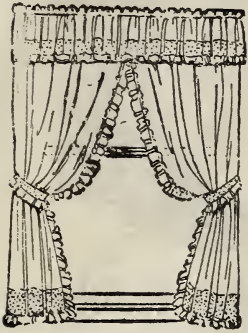
This is the only inexpensive Luggage Carrier I ever saw that didn't stick up in the way and prove to be a nuisance. It is fastened to the running board by a lock-nut screw clamp. It is out of the way when not in use. Stays there, but can be easily taken off. Comes furnished with heavy 5 foot web strap which slides in a channel groove and lets you adjust the buckle to any position. Carries bedding, boxes, crates, etc. I am sure you can't beat it for service. Price is low, too.

\$2.00 Pr.

Postpaid
Zones 2 & 3



Three Big Values In Curtains



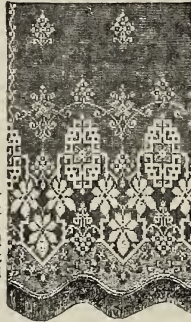
**Fringed Filet
Curtain Panels**
\$1.50 each

Postpaid in Zones 2 & 3.

The stylish curtain for living rooms, parlors or dining rooms. Good stout mesh filet with beautiful pattern just like picture. Cream color. Scalloped bottom is finished with 2-inch rayon bullion fringe that won't ravel. Each panel is 42-inches wide and 2 1/4 yards long.

**5-Piece Sets of
Ruffled Voile**
\$1.25 a set

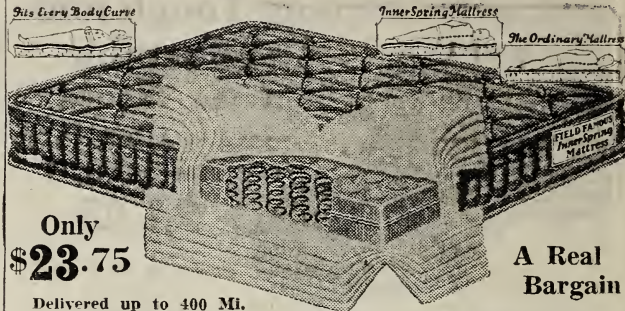
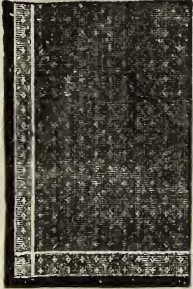
Postpaid in Zones 2 & 3.
Nice soft quality of cream white voile with fluted ruffles and inset bands of rose, blue or gold. Two curtains each 27 inches wide and 2 1/4 yards long; two tie-back strips and a 54-inch valance to match. Just the curtains for your bedrooms, dining room or kitchen.



**Tailored Filet
Net Curtains**
\$2.00 per pair

Postpaid in Zones 2 & 3.

If you like two curtains at a window you'll want these pretty, long-wearing mesh curtains with the neat little pattern like cut. The tailored edges give a handsome finished appearance to the pretty, cream colored net. Each curtain is 36-inches wide and 2 1/4 yards long.



Only
\$23.75

**A Real
Bargain**

Delivered up to 400 Mi.

Our Inner Spring Mattress

Most comfortable Mattress I've ever seen.

Of course you've seen this same type of mattress advertised at \$39.50. But by leaving off the name of the maker of these patented springs we've been able to cut the price.

Hundreds of spiral springs are encased in many layers of finely felted, clean cotton, and fresh air circulates through the mattress because of screened ventilators in the sides. The springs are entirely independent of each other, so when you lie down on it, the mattress just simply fits itself to every curve of your body. You relax completely. And really rest. Sleep is refreshing on this soft, downy bed.

Heavy quality, sateen-finish, art ticking cover, with the heavy rolled edge tape-bound. Rounded corners; seams tailored with mattress cord; side and end boxing neatly quilted. Full double bed size — 6 ft. 4 in. long by 4 ft. 5 in. wide.

Field's Famous Mattress

Freight paid up to 400 miles.



No need to pay \$25.00 for a mattress. Our Field Famous is made of good, clean layered cotton felt — a good, big lofty mattress that will stay soft and comfortable for a long time. You won't have to worry about sleeping on hills and hollows when you have this better-grade mattress on your bed. Cover is of good, firm grade of art sateen in floral pattern. Heavy rolled edges, quilted boxing, biscuit-tufted. Double-bed size 4 ft. 5 in. wide and 6 ft. 4 in. long.

Field's Comfort Mattress — \$10.75

Freight Paid up to 400 Miles.

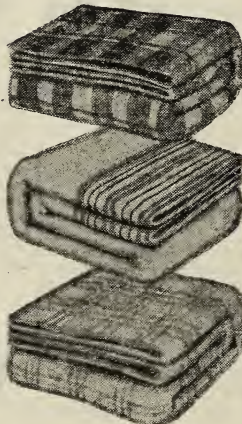
A real layered cotton felt mattress, a good deal like our "Field's Famous," but not quite so fancy. It's a usually \$15.00 grade.

Sturdy and Beautiful Bed Blankets

Cotton - \$3.00 pair
Part-Wool - 4.50 pair
All-Wool - 9.75 pair

All prices Postpaid in Zones 2 & 3.

We don't claim to have the cheapest blankets made, but we don't believe you can find better ones for the money. They're all stoutly woven of long-staple cotton or wool yarns; stand lots of wear and washing. The plaid patterns are pretty and will wash without losing any of their clear, bright tints. All our bed blankets are plenty large for full-size beds - 70 inches wide and 80 inches long. They're all double - really two blankets woven in one continuous length. The cotton blankets have shell-stitched ends; the part-wool and all-wool blankets have sateen-bound ends. All come in block plaids - blue, rose, grey, tan, orchid, peach or green combined with white.



Heavy Robe Blankets - \$3.00 each

Postpaid in Zones 2 & 3.

Here is a heavy felted single robe, 66x80 inch size, of cotton and wool mixed yarns. Choice of conventional designs or pretty novelty plaids in bright colors - reds, blues, tans or greys.

All-Wool Camp Blanket - \$4.00

Postpaid in Zones 2 & 3.

Plain, dark grey or olive drab, about 64x80 inch size. Heavy, tough construction makes this robe blanket just right for camping, motor robe, or couch cover.

Fringed Motor Robe - \$6.00

Postpaid in Zones 2 & 3.

Fine quality all-wool motor robe or couch cover in beautiful Scotch plaid patterns, fringed ends. Size 54x76.

**You Can Have
A Good Lawn**

Don't let anyone tell you that you can't have a nice lawn. Of course, you must use good seed and plenty of it. Put it in as early as possible. Rake it in. Then roll or tramp it down thoroughly. Nature and Spring rains will do the rest.

If the soil is poor, better fertilize it. 100 lbs. of Sheepo, \$2.25 F.O.B. Shenandoah, will do 1000 sq. ft.

If the ground is densely shaded, trim the trees up a ways so the sunlight can come in from the sides indirectly.

Never just sprinkle your lawn. When you wet it give it a good soaking down. Sprinkling a little dab of water on it, even though you do it 2 or 3 times a week, tends to bring the roots to the surface for the water. Then, dry weather soon kills these surface roots and your lawn burns out.

One good, thorough soaking every week or two is better than putting on little sprinkles of water every other day or so.

Keep it cut. Grass spreads by stooling and if regularly cut will not all go to top and get matted up but will spread out and be heavier.

For ordinary purposes plant our Lawn Grass Mixture. For extra shady condition plant our Shady Nook Mixture. Both are made up of best lawn grasses together with White Dutch Clover. 1 lb. will cover from 200 to 300 square feet depending on how much grass you already have. But

don't be stingy or you will never have a nice lawn. In 10 lb. lots either of the above mixtures are 40c per lb. Postpaid in Zones 2 & 3. Less than 10 lbs., 45c per lb. postpaid in Zones 2 & 3.

Bought Seed from Henry 37 years ago

"I have made garden for 37 years. My first garden was made nine miles north west of Shenandoah, Iowa. I got my garden seeds of Henry Field; had them brought right to my door.

—Mrs. Jacob Norris, Laurel, Nebr.

Big Yield of Small Limas

"I had one row and a half of small Lima beans in my garden and never had grown any before. I watched them all summer. They didn't look like they would ever get beans big enough. I was so disappointed I said "I'll never grow Limas again." and one day I looked and here some pods were dry. I opened it and saw ripe beans. I got a pail and picked and dried them good. and when they were shelled out I had one and a half of those big Quaker Oatmeal boxes full from 15c worth of seed. I haven't bought a dry bean for soup all winter."—Mrs. Wm. Hillgardt, Cedar Rapids, Iowa.

"KFNF is our favorite station and we certainly enjoy all your artists. I bought one of your raincoats and my father bought himself one of your suits and we're very much pleased. We also got some coffee and several other things. Your coffee is sure good - always tastes like more. We also have two of your tires on our Buick sedan and they have lasted good. Will buy some more when they are gone."—Miss Esa Mae Kurtz, Oregon, Mo., Rt. 2.



Used Our Twine

"We bought 600 lbs. of your binder twine and it was the best ever used. We also have eight of your tires - four 30 x 3 1/2 and four 33 x 6:00 - and they are still going strong.

"We enjoy your station all the time. I am using two of your tires on a corn shelling outfit. It is mounted on a Buick car. I have 30 x 3 1/2 Henry Field cords under the rear of my corn sheller. On a heavy load it weighs 2500 lbs. It is a four hole McCormick Deering Sheller. I have had it up to 65 miles per hour and believe me your tires never blew out either. Everybody says they are the best looking tires they ever saw. This is a snapshot of my sheller and myself ready to shell."—Earl Poland, Milburn, Nebr.

Spring Dress Goods

3 - 3 1/2 yd. Patterns - \$5.00

Thread to match each piece - Free

All Postpaid in Zones 2 & 3.

1 Pattern of fine quality silk and cotton crepe; 1 of new multi-filament rayon print; 1 of genuine English print. All are newest 1930 designs and colorings. We have every color you can think of so just let us know about what you're partial to and we'll pick out the patterns for you. Guarantee to please you, of course.

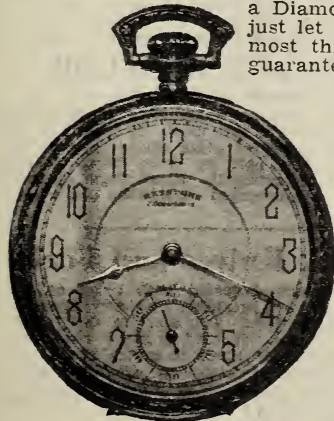
We Can SAVE You Money On Jewelry

I don't know of anything in the jewelry line that we can't sell you and save you money on. Until we started our Jewelry Department 2 years ago I didn't realize what big margins most of the jewelry items generally carry. For example, a watch which we can sell for \$12.50 comes

to us with a Retail price of \$18.00 marked on the box. Maybe the small jewelry store needs that big a margin on watches but we surely don't. The same is true of Diamonds and Clocks and everything else.

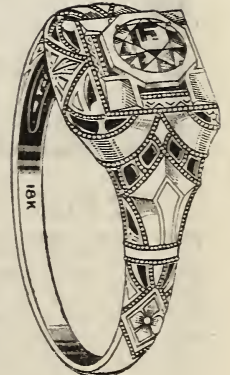
If you are thinking about a Watch of any kind, or

a Diamond or a Mantel Clock, Alarm Clock, or Silverware, etc. - just let us send you our price before you buy. I am confident on most things we can save you from 30% to 50% and our regular guarantee goes right with it - "Satisfaction or no trade." Just tell us what you are thinking about and see what we can do. Here's a coupon for your convenience.



Henry Field Seed Co., Jewelry Department

Please send me a complete description on the following jewelry items:



Name _____

Address _____



A Necessity in Every Home



Cooks the whole meal at once

National Pressure Cooker

A National Pressure Cooker is just as necessary to a woman as a plow or cultivator to a man. It cuts down on work. Cuts out the drudgery of cooking over a red hot fire and cooks meals in 1/2 the time.

Put the whole meal in - meat, vegetables, pudding and even onions. Flavors will absolutely not mix and the whole meal cooks at once. It is the best thing you will find for canning by the Cold Pack Method, too.

Fuel Saved Pays for it

It takes only about 1/2 the fire that is needed to cook on top of the stove. And besides the meal cooks in 1/2 the time. You save both ways. The men folks wouldn't think of going back to a wooden plow and a team of oxen. You womenfolks need to stand up for your own rights. You need labor saving, time saving equipment just as bad as the menfolks. And a Pressure Cooker is something no good housekeeper should be without.

- 52-Page Book on Canning, Cooking, Recipes, etc. Included FREE.
- 10 qt. capacity holds **\$14.50**
three quart jars - for family of four.
 - 12 qt. capacity holds **\$16.50**
four quart jars - for family of seven.
 - 18 qt. capacity holds **\$18.50**
five quart jars - for family of ten.
 - 25 qt. capacity holds **\$22.00**
seven quart jars - for hotels, etc.

Prepaid in Zones 2 & 3.

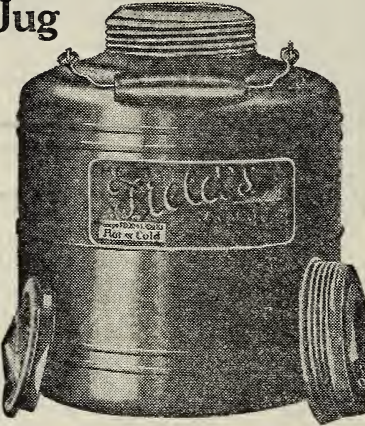
Field's Hot or Cold Jug

\$1.85 Postpaid
Zones 2 & 3

Keeps the Water Cold 24 Hours.
Keeps Things Hot 8 to 12 Hours.

GALLON SIZE

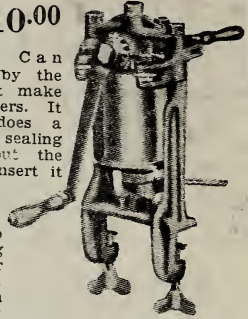
A mighty nice jug to have for everyday use as a field jug and for special outings, trips, etc. You'll wish for one of these dozens of times in the next few months. Welded Steel Jacket, baked enamel finish. Inside container is non-absorbent vitreous embedded in cork insulation and making the jug practically non-breakable. You'll like the big screw-top opening, large enough to put your hand in. All-in-all, a handy, useful jug to have the year around. Certainly a bargain at \$1.85, with postage paid.



National Can Sealer

Prepaid in **\$10.00**
Zones 2 & 3

The National Can Sealer is made by the same people that make the Pressure Cookers. It is simple yet does a splendid job of sealing cans. Simply put the lid on the can, insert it in the sealer, turn a crank and the job is done. No hot irons. No solder. Nothing but the sealer and cans needed. Order one on trial. Your money back if it don't suit. Picture sent on request. Meats, vegetables and fruits all better in tin cans and the flavor is better.



Cans for Any Can Sealer



We have cans for any sealer. These are made by one of the big can companies and are the best grade quality manufactured by anyone. Your choice of either plain or enameled.

- 100 No. 2 cans, plain \$3.50; enameled \$4.00.
- 100 No. 3 Cans, plain \$4.50; enameled \$5.00.

All cans are packed 100 in dust-proof, sanitary cartons and price above includes lids. Prepaid up to 400 miles.

Extra Lids

	Plain	Enameled
100 No. 2 Lids	\$1.15	\$1.30
100 No. 3 Lids	1.50	1.60

Prepaid up to 400 Miles.

Silver Tray

\$1.10



Postpaid in
Zones 2 & 3

A very pretty, quadruple-plated, bread tray. It is light in weight, will wear well and is an ornament to any table. It measures 12 in. long and 6 or 7 in. across. It is the quality you would expect to pay at least \$2.00 for. Guaranteed to please or money back.

Bread Knife \$1.00

Postpaid in Zones 2 & 3.

This is my sister Leanna's choice of all bread knives she ever used. It is a long, slim knife with serrated edges (looks like fine saw teeth). Cuts soft or fresh bread without breaking or tearing it. Stays sharp for years and can be sharpened on a stone like a regular knife.

Steak Knives and Forks

If you are disgusted with using ordinary dull knives at mealtime you will appreciate these sharp ones. The steel in these is the real stuff and will hold a sharp edge. Can be resharpened. Forks to match at the same price. Blades are stainless. Handles made of solid black rubber. Per set of 6 knives or 6 forks \$2.75, postpaid. 2 sets for \$5.00, postpaid.

Kansas Customer Well Pleased

"I have bought paint from you and it was just fine. My house hadn't been painted for 10 years and I put on 2 coats and it looks so nice now. I've also bought shrubbery and many other things and everything has just been fine."—Mrs. Frank Blaschke, 1239 Shawnee Ave., K. C. Kans.



32-Piece Dish Set Old Ivory with Rose Pattern

We have a lot of different combinations in our dish sets that we describe and explain fully in our Free Dish Circular. We also sell single pieces and souvenir sets. Write for the circular.

\$6.00

Postpaid in
Zones 2 & 3.

Write for Dish Circular

26-Piece Set Nickelware **\$6.25**

Postpaid in Zones 2 & 3.



A very pretty 26-piece set of solid nickelware that can be polished and polished until it is worn out and still it will look nice. It is solid nickel and there is no plating to wear off. It has a nice glossy finish and is just the thing for everyday wear. Comes in a very pretty pattern.

Serving Tray Free

The tray shown is included Free. It alone usually retails for about \$2.50.

Field's Famous COFFEE



- 5-lb. Cloth Bag \$ 2.40
- 10-lb. Cloth Bag 4.60
- 25-lb. Cloth Bag 11.00
- 10-lb. Cream Pail 4.90

All I want you folks to do is taste this special, private brand of coffee we sell. Just taste it, that's all. It has its own individual blend and has proven such a world beater that a dozen companies have tried their best to copy it. We've sold tons and tons

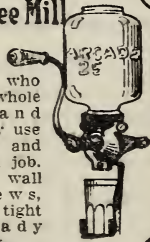
of it and sales go on increasing right along. Our coffee has a better and richer taste, a full mellow flavor. It's smoother. And it goes farther because of its extra strength. Our customers say it has more "pep and horsepower" than any they ever used—more real coffee flavor and strength.

I want you all to try it on my say so. I'll take all the risk. You can make a pot or two or more when your order comes. If it doesn't hit the spot and prove to be the best you've ever had just send back the part you haven't used and we will refund the entire purchase. If you can think of a stronger guarantee, go ahead and write it yourself. What I want is for you to try it. I know you'll join right in with all those who wouldn't have any except FIELD'S FAMOUS COFFEE.

1-quart Coffee Mill

\$1.10 POST PAID

For those who want to get whole berry coffee and grind it as they use it. A dandy and will do a good job. Complete with wall bracket, screws, glass and air tight container. Ready to go to work.



OLD DUTCH COCOA

- 5 lbs. - \$1.90 Postpaid in
- 2 lbs. - 1.00 Zones 2 & 3.

If you don't find our Cocoa to be the best you've ever used then I want you to return what you haven't used to us. This Old Dutch process Cocoa is certainly rich and full flavored. It is especially high in butter-fat content. Customers say it goes about twice as far as ordinary cocoa. And it is freer from sediment than any cocoa you ever used. Will be the best you ever used, bar none, or back comes your money.



Field's Famous Tea 3 lbs. - \$2.70

Postpaid in Zones 2 & 3.

Your Choice of Green or Black Tea

Everybody likes full-flavored mellow tea. Whether you drink it weak or strong you want the flavor to be right. If you are like most of our customers, this tea will give you something of a surprise. We believe it will go farther than any tea you ever tasted.

If you don't think so after using some of the package, send it back for a full refund. We guarantee the flavor and strength to satisfy you. \$1.00 per lb., Postpaid.

Peanut Butter

1 Gal. - \$2.25

Postpaid in Zones 2 & 3.

Here is a real bargain in absolutely pure Peanut Butter, with no filler and no adulterations of any kind. It's rich, smooth and wholesome. Made from selected Jumbo peanuts of unusually excellent flavor. Comes in gallon pails and will keep indefinitely.



Luscious DRIED FRUIT



Stewed Prunes

Fresh, clean, full-flavored and a real bargain at our prices. In a nut shell that's what our customers say about our Dried Fruit. It is fresh, comes to us direct from California in carload lots. It hasn't been sitting around and hasn't been kicked around for several months before you get it.

And it's clean. I guess that is one of the biggest reasons why we sell tons of Dried Fruit every year. Just compare it with the average run of stuff you see elsewhere. It won't generally take but a minute for you to see the great difference. We are proud, too, of the sanitary way our boxes are packed. Because it is so fresh and so clean it naturally has a wonderful taste, luscious and full-flavored. Really a lot of folks never know how good Dried Fruit is until they have had some of ours. And I guess you all know its mighty good for you, too.

I am going to let our prices speak for themselves. The market has raised a lot this year but we are big buyers and sell close to the bone and think we have the world beat when you consider our wonderful quality. Just write your own guarantee when you order. Make it as strong as you like and then fire it all back if you aren't entirely satisfied.

Postpaid in Zones 2 & 3.

- Combination Box - 10 lbs. Prunes, 5 lbs. Raisins, 2 lbs. each of Peaches, Apricots and Black Figs \$3.95
- Prunes, 25-lb. box 3.95
- Fancy Seedless Raisins, 25-lb. box 2.35
- Fancy Recleaned Yellow Peaches, 10-lb. box 2.40
- Extra Choice Apricots, 10-lb. box 3.00

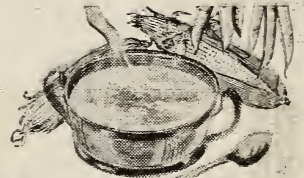
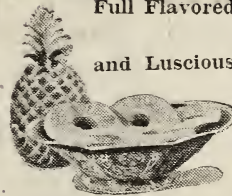
Freight Paid on 4-Box Orders

If you order four boxes or cases or more at the same time we will prepay the freight up to 400 miles. Get your neighbors to club in with you and save the freight charges. Your order may include Canned Vegetables, Canned Fruit or Dried Fruit, just so it is four boxes or cases. All one kind or assorted full boxes.

Canned Fruit and Vegetables

Full Flavored

and Luscious



First comes the bad news. When our present stock of canned fruits is gone our prices will have to take a stiff jump. Since we got our last carloads there has been a big raise and we will sure have to go higher with our prices on the next bunch. Don't forget - the prices below are only good as long as our present stock lasts.

Now the good news is that our Canned Goods are extra good. The canned fruits are rich in flavor. They are luscious and tasty with a thick, heavy juice that is a mark of superior quality. The vegetables are just as extraordinary in their line, too. Small, tender Peas. Extra large and flavorful Kidney Beans. And the Sweet Corn is the really sweet, delicious kind.

Eat some out of your can when it comes. Then you be the judge of the rich flavor and wholesome goodness. We will refund your money if you aren't mighty glad you ordered from us. Following prices are subject to raise when present stock is exhausted.

- Hawaiian Sliced Pineapple, 12 No. 2 1/2 cans \$3.60
- California Fancy Apricots, 12 No. 2 1/2 cans 3.50
- 1 Case - 24 cans, Dark Red Kidney Beans 2.75
- 1 Case - 24 cans, Garden Run Sweet Peas 3.50
- 1 Case - 24 cans, Fancy Country Gentleman Corn 2.75

F.O.B. Shenandoah, except we Prepay 4-Box Orders.

Henry Field's Tires



Wonderful Non-Skid Tread

We are building our tires with just one main idea and that is to give you more mileage and more satisfaction than you can possibly get any place else. And that's our guarantee! There has been a lot said about exaggerated mileage guarantees but what we say about our tires puts them in 1st place no matter what extravagant mileage claims the other fellow makes.

We challenge any tire made and will put Henry Field Tires up against any or all of them. Put a Henry Field Tire on one side of your car and some other brand on the other side. Give them a fair test one against the other and if our tire wears out first we will give you a new one free.

Now, we don't bar any tire on this. All we say is that the other fellow has to agree to give you a new tire free if his wears out first. The only trouble with this challenge is that you can't get the other fellow to back his tire against ours. They seem scared to death of Henry Field Tires. When we first made this challenge some of them made the mistake of taking us up and they have been sorry ever since. That ought to tell you which one is the best to buy.

Besides the wide open challenge we guarantee our tires for 15 Months Service or for 15,000 miles on a service basis.

I could tell you endless details about the fine materials of which they are made and how wonderfully well they are built. But what you want is Satisfaction and I guarantee that in full. One thing that deserves special mention is the tread of our tires. Lots of others have tried to copy it but you can't match the design of our tread for traction and wear.

You'll save money in the long run and get the most satisfaction if you order your tires from us. We'll give you prompt service, too.

These Prices Include Postage in Zones 2 & 3

Clincher—Anti-Skid Cord

Size		Approximate Shipping Weight	Net Price	Red Tubes Sh. wt.	Price
30x3 Cord	4 Ply	10 lb.	\$4.95	2 1/2	1.05
30x3 1/2 Cord	4 Ply	13 lb.	5.45	2 1/2	1.05
30x3 3/4 Cord	4 Ply	14 lb.	5.85	2 1/2	1.05

Straight Side—Anti-Skid O. S. Cord

30x3 1/2 Cord	SS	4 Ply	15 lb.	6.25	2 1/2	1.05
30x3 3/4 Cord	OSSS	5 Ply	17 lb.	7.30	2 1/2	1.05
31x4 Cord	SS	5 Ply	20 lb.	9.50	3	1.40
32x4 Cord	SS	5 Ply	21 lb.	9.95	3	1.45
33x4 Cord	SS	5 Ply	23 lb.	10.30	3	1.55
33x4 1/2 Cord	SS	6 Ply	27 lb.	13.95	3 1/2	1.85
34x4 1/2 Cord	SS	6 Ply	31 lb.	15.30	4	2.00

Truck Cords—Straight Side Heavy Duty

30x3 1/2 CL	5 Ply	15 lb.	8.00	2 1/2	1.05
32x4 1/2 SS	8 Ply	32 lb.	17.50	4	1.90
30x5 SS	8 Ply	38 lb.	20.50	5	2.45
32x6 SS	10 Ply	60 lb.	37.95	7	4.00

Balloon Cords—Straight Side Heavy Duty

29x4:40 SS	4 Ply	16 lb.	6.75	3	1.15
29x4:40 SS	6 Ply	19 lb.	8.15	3	1.15
29x4:95 SS	4 Ply	21 lb.	9.65	4	1.80
30x4:50 SS	4 Ply	17 lb.	7.40	3	1.30
28x4:75	4 Ply	18 lb.	8.15	3	1.35
29x5:00	4 Ply	22 lb.	9.20	4	1.75
30x5:00	4 Ply	21 lb.	9.65	3	1.80
30x4:95 SS	4 Ply	21 lb.	9.90	4	1.85
30x5:25 SS	4 Ply	26 lb.	11.60	4	1.95
30x5:25	6 Ply	30 lb.	12.50	4	1.95
30x5:77 SS	6 Ply	31 lb.	13.65	4 1/2	2.10
31x5:25 SS	4 Ply	27 lb.	11.95	4 1/2	2.00
31x5:25	6 Ply	31 lb.	12.95	4 1/2	2.00
32x6:00	6 Ply	31 lb.	13.65	4 1/2	2.10
31x6:00 SS	6 Ply	30 lb.	14.65	5	2.05
33x6:00 SS	6 Ply	32 lb.	14.95	6	2.15

Odd Sized Tires (not our molds)

29x4:50 SS	4 Ply	16 lb.	7.35	3	1.20
32x3 1/2 SS	4 Ply	22 1/2 lb.	8.95	3	1.35
34x4 SS	5 Ply	24 lb.	10.95	4	1.60
33x5 SS	8 Ply	42 lb. Ex. Hvy. Dy.	21.85	6	2.70
34x5 SS	8 Ply	43 lb. Ex. Hvy. Dy.	23.90	6	2.80
35x5 SS	8 Ply	43 lb. Ex. Hvy. Dy.	24.80	6	2.95
31x4:40 CL	4 Ply	16 lb. CL Bal. Dy.	7.95	3	1.40
31x4:40 SS	4 Ply	18 lb. SS Bal. Dy.	8.75	3	1.40
30x6:00 SS	6 Ply	30 lb. Balloon	13.95	6	2.00
31x4:95 SS	4 Ply	25 lb. Balloon	12.25	4 1/2	1.90
28x5:25 SS	6 Ply	25 lb. Balloon	13.50	4	1.80
32x5:77 SS	6 Ply	33 lb. Balloon	16.95	5	2.30
32x6:20 SS	6 Ply	34 lb. Balloon	17.75	5	2.50

Prices Subject To Change Without Notice

SPECIAL on Truck Tires

While they last we are offering the following extra special bargains in truck tires. Compare these prices and get your order in before they are all gone.

Postpaid in Zones 2 & 3.

36x6 SS	10 Ply	Tire and Tube	\$39.50
34x7 SS	10 Ply	Tire and Tube	49.50
38x7 SS	10 Ply	Tire and Tube	52.50
36x8 SS	12 Ply	Tire and Tube	71.50
40x8 SS	12 Ply	Tire and Tube	72.50

This is a case of first come first served and at these prices they aren't going to last long. Order right away if you need the above sizes.

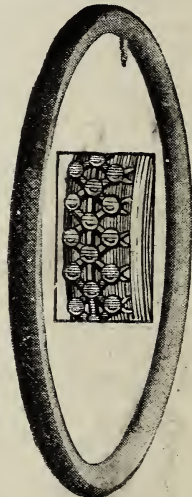
Bicycle Tires

\$1.60 Postpaid in Zones 2 & 3.

Boys want tires on their "bikes" that will stand lots of hard riding and long wear. The kind that stay up and are not easily punctured. We have contracted for just this kind of tires. Big, husky, oversize, single tube type with red rubber, non-skid treads. The kind that will stand long, hard usage and at the same time improve the appearance and beauty of any boy's "bike." We have both sizes—28x1 1/2 and 26x1 1/2.



BOYS:—If you will plant a good big garden and sell some of the vegetables you can earn your own money. Then you can buy your own things without being an expense to your Mother and Dad.



Farmer's Pocket Knife

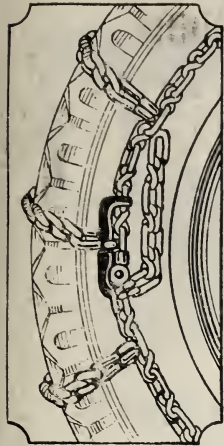
\$1.50 Postpaid in Zones 2 & 3

The best all-around knife for the farmer. About 4 in. long. No rough corners to snag and tear the pocket. Ebony handle securely riveted. Three blades—one about 4 in. length with sabre point; and a shorter flesh blade with the stub point needed for farm-surgery; a regulation punch blade, very thick and with sharp edge. All blades are of hardest steel, finely tempered to take and hold a razor-sharp edge without clipping or breaking. Knife lined with nickel. A most unusual value. \$1.50 postpaid.

Reliable Tire Chains at Money Saving Prices

Easy to put on and take off, and made to stand a lot of wear and tear. The long lever lock is easy to handle and it looks absolutely secure. The side chains are lock-link type, heavily galvanized and large size. The cross chains are extra heavy steel, case hardened with joints electrically welded. It pays to have a pair along and it pays to have good reliable ones like these. Glad to send them to you on approval. Then, you can see the fine quality and see that at our prices you have got a real bargain.

Prepaid in Zones 2 & 3.



30x3 1/2	\$3.25	28x4:75	-----	\$4.25	30x5:77	-----	\$5.00
27x4:40	3.25	29x4:75	-----	4.25	33x5	-----	5.50
28x4:40	3.25	30x4:75	-----	4.25	32x5:77	-----	5.50
29x4:40	3.65	29x4:95	-----	4.50	33x5:77	-----	5.50
30x4:50	3.65	30x4:95	-----	4.50	34x5	-----	5.75
31x4	4.00	31x4:95	-----	4.50	35x5	-----	5.75
32x4	4.00	29x5:00	-----	5.00	34x5:77	-----	5.75
31x4:40	4.00	30x5:00	-----	5.00	30x6:00	-----	6.00
33x4	4.30	31x5:00	-----	5.00	31x6:00	-----	6.00
34x4	4.30	32x5:00	-----	5.00	30x6:20	-----	6.00
32x4 1/2	4.35	28x5:25	-----	5.00	30x6:20	-----	6.00
32x4:95	4.35	29x5:25	-----	5.00	31x6:20	-----	6.00
33x4 1/2	4.65	30x5:25	-----	5.00	32x6:00	-----	6.35
33x5:95	4.65	31x5:25	-----	5.00	33x6:20	-----	6.35
34x4 1/2	4.80	29x5:50	-----	5.00	32x6:20	-----	6.35
34x4:65	4.80	30x5:50	-----	5.00	33x6:20	-----	6.35

Heavy Duty Truck Chains

32x4 1/2	\$6.35	32x6	-----	7.65	38x7	-----	\$12.30
30x5	6.10	36x6	-----	9.00	36x8	-----	12.50
33x5	7.00	34x7	-----	10.90	40x8	-----	13.50
35x5	7.35	34x7:50	-----	10.90			

Cross Chains (Regular)

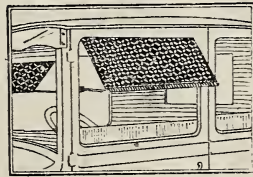
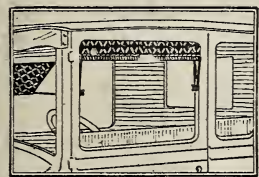
3 1/2 inch	-	6e ea.	-	.70 doz.
4 inch	-	7e ea.	-	.80 doz.
4 1/2 inch	-	8e ea.	-	.90 doz.
5 inch	-	9e ea.	-	1.00 doz.
5 1/2 inch	-	12e ea.	-	1.35 doz.
6 inch	-	14e ea.	-	1.65 doz.

Cross Chains (Truck)

4 1/2 inch	-----	12e ea.
5 inch	-----	14e ea.
5 inch dual	-----	30e ea.
6 inch	-----	18e ea.
6 inch dual	-----	35e ea.
7 inch	-----	24e ea.
7 inch dual	-----	40e ea.
8 inch	-----	28e ea.

Prices Subject To Change Without Notice.

Prepaid in zones 2 and 3.



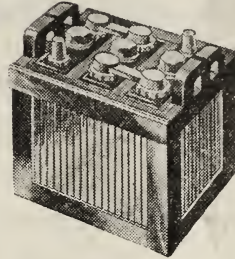
Drive Your Car In Comfort With Car Awnings \$3.45 Per Pair

Postpaid in Zones 2 & 3.

Awnings are a practical necessity to keep the hot sun out of your car. They are a real comfort. And what's more they make a car look dressed up. The awning we are showing above is a new type, improved awning. Made of Fabricoid which is strong, durable and good looking. Frame is finished in black enamel. Parked rust-proof trimmings. It is a roller type awning with double-acting spring tension to keep the wind from blowing the awnings. Will stay at any angle and can be pulled clear down covering the whole window.

They are easily installed. You can do it yourself. No holes to drill. Attach inside the window which can be closed tightly after the awnings are on. Will fit any car. Choice of greyish green or blue colors. \$3.45 pair includes postage in Zones 2 & 3.

60 Day Trial Offer on Storage Batteries Guaranteed for 2 Years



Our Storage Batteries are guaranteed on a service basis for 2 full years and you get a 60 Day Trial. They are made of heavy, durable materials, and they consequently deliver a steady flow of strong, firm power for your car or radio. Lots of power and dependable power. After 60 Days' Trial you can send it back for full refund and if you keep it we guarantee it on a service basis for 2 years.

IMPORTANT: For your car, give us the measurements of your old battery and the name and model of your car. Only difference between Radio and Car batteries is the terminals.

Radio and Car Batteries Measurements Plates Wt. Price

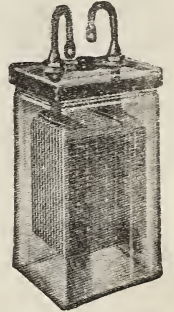
6-volt 100 Amp. (Usually called 100 to 120)	8 3/4 x 7 in.	11.46 lb	\$ 7.50
6-volt 120 Amp. (Usually called 120 to 140)	10 x 7 in.	13.53 lb	9.50
6-volt 140 Amp. (Usually called 140 to 175)	11 1/4 x 7 in.	15.61 lb	11.50
6-volt 160 Amp. (Usually called 160 to 200)	12 1/2 x 7 1/2 in.	17.69 lb	13.50
12-volt 160 Amp. (Dodge Cars Only)	12 1/4 x 7 1/2 in.	7.62 lb	11.50

F.O.B. Shenandoah.

Farm Light Batteries

Guaranteed for 5 years against defects in material and workmanship.

Yes, we are selling high grade farm light plant batteries and guarantee them fully. Compare our prices and you will find you can make a good big saving by ordering from us. The guarantee protects you. Find the capacity of your battery and order the corresponding size from us. (BHS13 size used for Delco.)



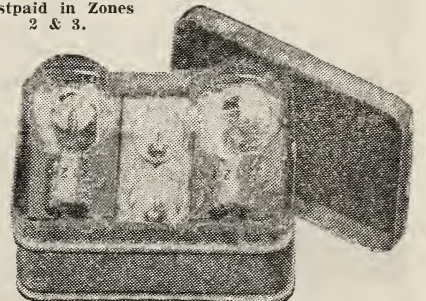
BHS7	BHS13	BHH13
80 Amp.	160 Amp.	240 Amp.
\$89.00	\$135.00	\$170.00
Weight Per Cell		
30 lbs.	50 lbs.	67 lbs.

F.O.B. Minneapolis, Omaha, Davenport or St. Louis.

Car Light Bulb Kit

A good thing to have along at all times. You never know when your light will go out and leave you in danger on a dark road. Kit includes 2 Head Lamp bulbs, 1 Dash Light bulb, and 1 bulb for Tail Light. We can fit all cars. Just tell us what make car you have and what year. Comes in 3 sizes-80c; 86c & \$8c.

Postpaid in Zones 2 & 3.



Handy Size 2 Cell Flashlight

2 cell - \$1.00 2 cell (special focusing lens) - \$1.25.

Postpaid in Zones 2 & 3.

This is a regular 2 cell flashlight in an indestructible fibre case. Comes complete with battery and bulb. Guaranteed to reach you in good condition including fresh strong battery.



SPREADS EASIER - GOES FARTHER - LOOKS BETTER

FIELD'S FAMOUS HOUSE PAINT

\$2.50 in 5 Gallon Lots
FREIGHT PAID
 East of Rocky
 Mountains
PER GALLON



Quantity	Per Gal.
50 Gal. Barrel	\$2.40
25 Gal. Barrel	2.45
5 Gal. Drum	2.50
1 Gal. Can	2.60
1/2 Gal. Can	1.35
1 Quart	.75

Prices subject to change without notice.

Take Your Choice of 20 Colors

- White, Black, Ivory, Terra Cotta,
 - Rose Pink, Sky Blue,
 - Red Oxide, Pearl Gray, Maroon,
 - Light Lead, Light Buff,
 - Apple Green, French Gray
 - Myrtle Green, Cream,
 - Shutter Green, Tobacco Brown,
 - Bungalow Brown,
 - Colonial Yellow, Slate Color
- Color Card on Request

Free - 2 Gals. Linseed Oil and a 4 Inch Paint Brush

We will give absolutely free two gallons of Linseed Oil with every five gallons of House Paint you order. Four gallons of Linseed with a 10-gallon House Paint order, six with a 15-gallon order, etc. With each order of five gallons or more of Paint we will also send free a 4-inch rubber set paint brush. Only one brush each given on each order for House Paint.



Don't Put Off Painting Another Year

I am going to let our Paint prices and our Guarantee of Quality speak for themselves. What I do want to tell you right here is that you can't afford to let your place run down for lack of paint. Rot and decay and repair expense go right on all the time - unless you put the paint on and put a stop to them. That's a thing that any Real Estate man will tell you. Ever try to sell a shabby looking place? Well painted, good looking improvements on a place make every acre worth more in actual cash. The same thing is true, of course, whether you intend to sell or not.

And then there's the other side of it, too. A fellow hates to live in a dead looking, shabby place. If paint didn't do a thing but brighten up a place and make it look neat like somebody really lived there I'd say paint was worth all it costs. A fellow's pride is worth something and you can't take much pride in a dead looking, shabby place.

Paint up this season. It will be the best investment you ever made and make you feel happier, too. Our colors are clear and clean and bright. Our white paint is really white, not the dull smudgy kind. The guarantee will tell you just what to expect whether you order Light Buff, Colonial Yellow or any other colors.

Now get out your pencil and send in your order without putting it off any longer. On the next page you'll find how to measure your buildings.

My Paint Guarantee and Trial Offer

Use 2 gallons out of your order for any of our paint. If it doesn't convince you of all we say and then some, fire it back. You're welcome to the 2 gallons and we'll see that you aren't out anything for freight on the deal either.

You don't have to take my word about it. Don't take anybody's. Just send along your order and

decide after you've put 2 gallons on. That's fair enough, isn't it?

Yes, and we guarantee it to be fresher. Spread better. Work easier. And go farther. After any reasonable length of time, if the paint is not giving you the service you are entitled to, we will send you paint free to repaint the job.



Liquid Roof Cement

This is really a wonderful thing to put over old roofs. It will fill every crack and crevice, nail holes, laps or joints. Works equally well on flat or steep roofs, whether shingle, composition, paper, felt, gravel or metal. Skins over so that it is not sticky but it still stays pliable so that it will not crack or split in cold weather. This is not a cheap coal tar product. The composition contains only pure asbestos—no wood pulp or paper shavings. Can be put on with an old broom or roofing brush. Allow one gallon for 75 square feet of roof. Where holes are too large first fill with Plastic Cement. Prices—F.O.B. Shenandoah. 1 gal. 75c; 5 gal. 65c; 25 gal. 55c; 50 gal. 50c. Black only.

Free Roofing Brush with 25 gal. or more.

Paint Prices Are Freight Paid East of the Rocky Mountains if your Order Totals 5 Gals. or More.

PLASTIC CEMENT

Price—5 lbs. 60c, 10 lbs. \$1.00, 25 lbs. \$2.00.

REFINED COAL TAR

Prices—1 gal. 75c, 5 gal. 65c, 25 gal. 50c, 50 gal. 40c.

CEMENT OR STUCCO PAINT

1 Qt., 75c; 1/2 Gal., \$1.35; 1 Gal., \$2.45; 5 Gal., \$2.35; 25 Gal., \$2.30; 50 Gal., \$2.25; Same colors as House Paint.

Not Prepaid except with amounts for 5 Gallons or More.

How to Figure the Amount of Paint Needed For Your Buildings

Measure length, width and height. Add together the total length in feet of the two sides and two ends of the building. Multiply this by the average height of the building at the eaves with 2 feet added for cornice. This gives square feet of surface to be painted. One gallon will paint 250 to 350 square feet with two coats. Divide the number of square feet to be painted by 250 and you will have the maximum number of gallons needed.

All orders of Paint amounting to 5 gallons or more will be pre-paid anywhere East of the Rocky Mountains.



Save Money On Barn Paint

With A Paint Brush FREE

\$1.40 per gal. in 5 gal. lots

Freight Prepaid East of Denver

Red, (Bright or Dark) Per Gal. **\$1.50**
White, Gray or Slate Per Gal. **2.10**

1 Gal.	5 Gal.	25 Gal.	50 Gal.
\$1.50	\$1.40	\$1.35	\$1.30
2.10	2.00	1.95	1.90

Figure your barn in for painting too. It generally looks worse than the house and generally needs painting even more. You will find that our Barn Paint covers a lot of area, more than most, and it spreads smooth and evenly.

With your order for 5 gallon or more we will send you a 4-inch Paint Brush FREE and will pay the Freight anywhere East of the Rocky Mountains. While you are painting the house and barn give the chicken house, implement shed and other buildings a painting, too.

Inside Flat Wall Paint \$2.25 Gal.

FREE - 1 Gallon of Turpentine Free with 5 Gallons of Flat Wall Paint

Colors:—Light Ivory, Azure Blue, Ivory, French Gray, Sky Blue, Light Buff, Pearl Gray, Pale Green, Apple Green, Old Rose, Light Yellow, Buff, Light Tan, Med. Brown, Brown, Cream.

1 Qt. 70¢; ½ Gal. \$1.20; 1 Gal. \$2.25. 1 Gallon will cover 200 square feet of sand finish or wall, or 300 sq. ft. of hard finished surface two coats.

For a velvet-like, lovely finish on your interior walls we certainly recommend this Inside Flat Wall Paint. It's easy to apply and stands washing well, too. Can be used on woods, plaster, kalsomine, wall paper, beaver board, etc.



Screen

Paint

1 Qt. covers 10 to 12 average screens. Price: Qt. 65¢; ½ Gal. \$1.25; 1 Gal. \$2.25

Specially mixed paint that will not fill or clog the mesh of screen wire. Black or green only. Cannot be used on the frames.

Inside Gloss Paint

Same colors as the outside house paint. It is more of a semi-gloss as most people do not want a high gloss on inside paint.

Gal. \$2.60; ½ Gal. \$1.35; Qt. 75¢.

Miscellaneous

Sand Paper (all grades) 2 sheets 5¢
Grainers 45¢
Wall Scraper - 3½ in. 70¢
Putty Knife 15¢ - 35¢ - 50¢
Varnish Brushes 1 in. - 35¢ 1½ in. - 50¢
2 in. - 80¢ 2½ in. - \$1.05 3 in. - \$1.25
Paint Brushes 3½ in. - 90¢ 4 in. - \$1.00

Auto Top Dressing

1 Pt. 60¢ 1 Qt. \$1.00

Wagon Paint

Price of Red Colors—Qt., 85¢; ½ gallon, \$1.60; 1 gallon, \$3.00.

Price of Black, Green, Yellow or Dark Blue: Qt., 60¢; ½ Gal., \$1.10; 1 Gal., \$2.10.

Paint Spray Guns

We have Paint Spray Guns for Sale, Hire or Loan. Write for details.

Freight Paid East of Rocky Mts. on 5 Gallons or More

Enamels

Qt. \$1.10 ½ Gal. \$2.10 1 Gal. \$3.90
1 Gallon will cover 500 square feet.

White, Ivory, Medium Brown, Old Rose, Apple Green, Buff, Azure Blue, Sky Blue, Light Ivory, French Gray, Cream, Light Yellow, Light Tan, Pearl Gray, Pale Green, Light Buff, Brown.

Gives a hard, porcelain-like appearance and finish. Good to look at. Easy to keep clean.

Enamel Undercoat

One gallon will cover about 400 square feet 1 coat. White only.
Price—qt. 70¢, ½ gal. \$1.20, 1 gal. \$2.25.



4 Hour

Enamel

½ Pt. 50¢, 1 Pt. 90¢, P.P. Zones 2 & 3. Quart, \$1.15; Gal., \$1.00, Not Postpaid.

Just the thing for tables, chairs, shelves, bath room woodwork, etc. Apply this 4 Hour Enamel in the evening and in the morning you can use the things you paint. Takes just 4 hours to dry.

Colors: Ivory, Chinese Yellow, Pearl Gray, Coral Pink, Beige, Jade Green, Chinese Red, Light Blue, Rich Blue Sage Green, Jet Black, White.

FOR PORCH FLOORS

Qt. 95¢; ½ Gal. \$1.60; 1 Gal. \$2.85

FOR INSIDE FLOORS

Qt. 85¢; ½ Gal. \$1.50; 1 Gal. \$2.60

Varnish & Varnish Stains

Varnish stain comes in Light or Dark Oak, Walnut, Mahogany or Cherry.

	Qt.	½ Gal.	Gal.
Clear Varnish, All Purpose	\$1.00	\$1.90	\$3.70
Varnish Stains	1.00	1.90	3.70
Spar Varnish, Clear	1.20	2.20	4.00
Varnish Brushes: 1 in., 35¢; 1½ in., 50¢; 2 in., 80¢.			

PAINT AND VARNISH REMOVER

Price—Qt. 65¢; ½ Gal. \$1.25; 1 Gal. \$2.25.

WOOD DYE

One gallon will cover about 400 square feet. Comes in all popular varnish colors. Price—1 qt. \$1.05; ½ gal. \$1.90; 1 gal. \$3.50.

Shingle Stain

1 Gal. \$1.40; 5 Gal. \$1.35 per gallon; 25 Gal. \$1.30 per gallon.

Colors: Bungalow Brown, Moss Green or Red Oxide.

Aluminoid (Silver Paint) ½ pint—70¢
Ormold (Gold Paint) ½ pint—70¢

LIQUID WAX

Price—Pint 55¢; Quart 95¢.

Refrigerator or Bath Tub

ENAMEL—White only, 70¢ pt.

PASTE WOOD FILLER

Price—5 lb. can 95¢.

PATCHING PLASTER

5 lb. package 40¢.



Paint - Enamel - Wallpaper
"All Very Good"

The Zeller family wrote us a fine letter and I am printing it below. But before you read it I want to remind you, too, that we sell Wallpaper and

all kinds of paints. Now, before you get into your Spring cleaning, sit down and figure out what you need. We believe we can save you money and we know we can send you the kind of quality you want and ought to get. Flat Wall Paint and porch floor paint - and everything. All at money saving prices.

Here's the letter from Mr. & Mrs. Lyle Zeller, Kasson, Minn. Their home is shown above.

"This is a photo of our house after we had painted it with your fine paint. We surely were pleased with the paint - think it to be the best on the market. We also used your enamel and wall paper and found everything to be very good."—Mr. & Mrs. Lyle Zeller, Kasson, Minn.

**Write For Our Special
Wall Paper Catalog**



**Watermelon
To Make
Your
Mouth
Water**

You can't blame Carroll Smith, Mt. Ayr, Iowa, for being proud of these 2 Colorado Kleckley Watermelons. And you can't blame us if you don't raise all you can eat of them this summer. We are giving you fair warning right now that you're sure going to wish you had a melon patch. See the condensed price list on the yellow sheet and include watermelon seed on your order.

A Beautiful Roof That Will Last



\$4.95 Specifications:
Per Square
F. O. B.
Shenandoah

Size of Strips (2 shingles to the strip) 12 1-3 in. x 36 in. Width of the shingle at the top 12 in., the bottom 6 in. The height of the lower cut is 4 1/2 in. with a 3 in. head lap. It takes 86 strips of these to the square and enough for a square comes in two bundles. Average weight per square 175 lbs.

COLORS: Solid Green, Solid Red or Beautiful Harmony Blend Mixture.



\$5.95 Specifications:
Per Square
F. O. B.
Shenandoah

Size of Strips (four shingles to the strip) 10 in. by 36 in. Width of shingles 8 1/4 in. with 4 in. exposed to the weather and a head lap of 2 inches. 100 Strips cover a square and they are put up in two bundles of 50 each. Average weight per square is 195 lbs. That means they are extra heavy.

We'll Be Glad To Send You Samples of These Fine Roofings

You can't blame folks for choosing the prepared roofing instead of the old wooden shingles which are going out of use now-a-days. Folks pick the prepared roofing for good sound reasons, too. First, it is mighty economical at our prices, cheaper in the long run. It is much cheaper and much easier to put on. Goes right on over your old roof. And from the standpoint of appearance there isn't any argument either. It's colorful and neat and will really add value to your home.

Our Slate Surfaced roofing below, either Hexagon or Strip, is heavily coated with treated rock. It is thoroughly saturated with Asphalt. It won't curl, warp and won't lose its color, either. Makes a roof that will

last for years to come and retain its attractive appearance.

This prepared roofing resists fire and that is mighty important. It has been awarded a Class C Label by the Fire Underwriters and actually reduces the fire risk. In fact, when you put it on you want to be sure to tell your fire insurance company about it and save from 10% to 15% on your insurance.

About our prices? They are not the cheapest because there is a lot of inferior stuff being sold. But quality considered, we are sure you will save a nice lot of money by ordering of us—and have a better roof and one that will last longer to boot.

Our Roofing Guarantee

We don't put a limit on our Roofing guarantee. You are to be the judge. We do claim to have extra fine quality and will put it up against anyone's roofing. We guarantee that it will last as long or longer, look better and cost less in the long run than the other man's or we'll take our medicine. What could be fairer? We have faith in our roofing and we're not afraid to say so and back it up.

How To Measure For Roofing

For a regular gable roof, multiply the length of the roof by the length of the rafters on each side and multiply this by two which will give the total number of square feet on both sides of the roof. Divide the square feet by 100 to get the number of Squares of shingles or Rolls of roofing you will need.

For the hip, multiply the length of the roof on one side by the length of the longest rafter and divide by two, which will give you the total number of square feet for that side. Measure and compute the other three sides in the same way.

After you get the number of square feet, divide by 100 which will give you the number of squares or rolls of roofing you will need. Allowance is made in both the shingle strips and the rolled roofing for laps.

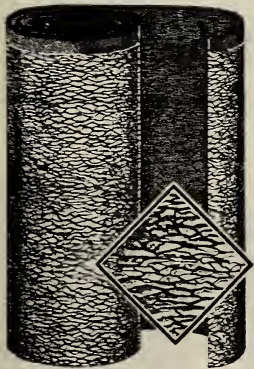
If you will send the dimensions of your roofs we will be glad to make estimates for you.

Ruf-top Roll Roofing

\$2.20 per Square — F.O.B. Shenandoah

Asphalt Color with talc high lights on corrugated surface. Made to meet the rigid requirements of Governments and Railroads. Rolls are 36 inches wide with 108 square feet in each roll.

Covers 100 ft. square. Weighs 55 lbs. to the roll. Made of first quality Rag Felt heavily saturated with asphalt and carries the high standard Underwriter's Label. This is a real bargain at \$2.20 per square and this low price must be subject to change without notice. Can't promise to keep this low price on indefinitely.



"I have only had time to put one coat of paint on my house but I think it is the best and whitest paint I ever used. One man says that one coat of your paint is as good as two of the kind that is sold here. Everyone that has looked at it says Henry Field's Paint is the very best."—J. F. Martin, Blue Springs, Nebr.

"I am ordering some overalls for my boy. This is the third year I have ordered your overalls and I order 3 pair each fall before school and they last a year. He is a real boy, too. Busy all the time. And he is still wearing the first ones we got along with the others so you see what we think of your overalls."—Chas. Gooch, Gridley, Kansas.

Slate Surfaced Roll Roofing



Nails and Cement FREE

Extra Heavy

87 to 90 lb. per Roll

\$2.50

Per Square

F. O. B.
Shenandoah

This is made of the same heavily asphalted rag-felt that goes into our Hexagon and Strip Shingles. Same thorough coating of colored rock (Green or Red). The difference is that this comes in rolls, goes on a little easier and quicker, and goes a little farther. Each roll is 36 inches wide and contains 108 sq. ft. Will cover 100 sq. ft. when allowance is made for laps. Rolls weigh 87 to 90 lbs. each.

It is heavy enough to lay good and flat and will retain its color for years. It carries the Fire Underwriter's Label C - which means that it resists fire. When this roof goes on your home be sure and tell your insurance agent about it and have him give you the cheaper fire insurance rate. Generally you can expect from 10% to 15% saving on your fire insurance.

With each roll you order we will send you FREE enough large headed galvanized nails and cement to put it on.



1930 Wall Paper Catalog

Yes, we will have our New Wall Paper Catalog ready by the time you get this and it will be sent to you on request. You will be doing us a favor and maybe saving yourself disappointment by requesting your copy early. Last year our prices and styles in Wall Paper proved so popular that we were out of catalogs almost before the real Season got started. So send your request early.

You can count on a new and beautiful lot of styles and colors and, of course, we think we can save you quite a bit on your order just like we did for so many folks last year. Anyway it won't cost you a cent to send in the coupon and see what we've got.

Fill in and Send This Coupon For Wall-paper Catalog

Name _____

Address _____

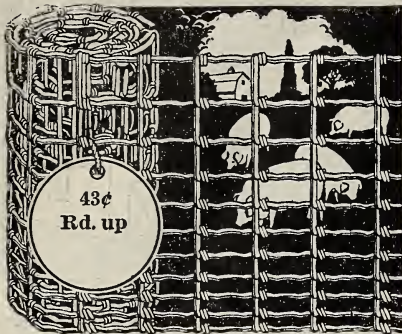
Bale Ties



Bundle of 250 — \$1.40

Extra strong wire that will not be bursting the bales if you happen to get it tied a little too tight. These are 9 feet long and made of strong, heavy 15-gauge wire. Guaranteed to suit. F.O.B. Shenandoah.

Weight about 32 lbs. per bundle.



Extra Heavy Hog Wire

Top and Bottom Wires No. 9, Intermediate wires No. 11, Stays 6 in. apart.

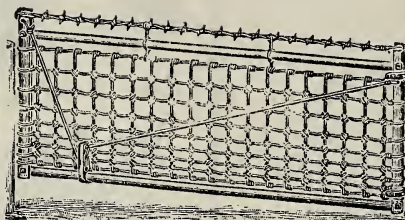
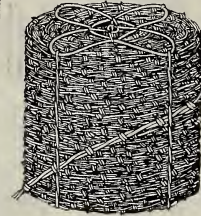
Size	per rd.	rd. roll	rd. roll	rd. roll
23 in.	43¢	188 lbs.	282 lbs.	376 lbs.
32 in.	48¢	214 lbs.	321 lbs.	428 lbs.
39 in.	56¢	260 lbs.	390 lbs.	520 lbs.

For extra hard usage where lots of hogs are raised you will probably be ahead by using this extra heavy grade. The top and bottom wires are extra heavy No. 9. The intermediate wires No. 11. Stay wires 6 inches apart. Guaranteed to be as heavily galvanized as any wire on the market and heavier than most. That's what makes this wire last so long.

Heavily Galvanized Barb Wire

(2-pt.) Cattle Wire \$3.25 Per Spool
80-rd. Spools, 79 lb.
(2-pt.) Hog Wire \$3.45 Per Spool
80-rd. Spools, 85 lb.

This is made of heavy wire, double coated with galvanizing and is what is known as the best grade of Glidden Type Barb Wire. This is 2-strand No. 12½ gauge wire with 2-point 14-gauge barbs. Barbs on the cattle wire are 5 in. apart and 3 in. apart on the hog wire. They are double twisted around the main wires and will not pull off.



54-in. High.

Sturdy Adjustable Gates

Prices - 12 ft., \$9.95; 14 ft., \$10.45; 16 ft., \$10.95. F.O.B. Shenandoah.

Average Wt. about 100 lbs. each.

Frame made of heavy galvanized steel with stout iron on ends. Woven wire used for filling. Barbed wire across top to keep stock off. Adjustable at one end and can be raised any height up to two feet if you want pigs or chickens to go through.



Vine Grew In a Hurry

"Am sending you a picture showing the growth of one of your Silver Lace Vines made in one season. I planted it this past spring on the south side of the porch, in ordinary soil. It would have climbed higher if I had provided more string or wire. May have to force it to hang down next summer, in order to cover the lower part of the porch. You certainly did not exaggerate when you called it the fastest growing hardy climber in existence."—Rev. C. Lille, Van Meter, Ia.

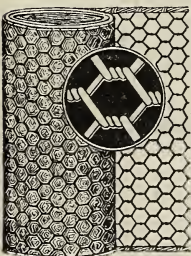
You will find these vines listed on Page 33 of our 1930 Spring Catalog.

We Can Save You Money On Your Fencing

Diamond Mesh Poultry Netting

24-in. roll of 150 feet, wt. 33 lbs.	\$3.60
33-in. roll of 150 feet, wt. 47 lbs.	4.95
48-in. roll of 150 feet, wt. 60 lbs.	6.65

F.O.B. Shenandoah



Used extensively for pens, flower beds and trellises. We believe this is the lowest price ever made on strictly first class Poultry Mesh. Small 1-inch mesh, heavily galvanized and full 20 gauge wire.

"The fencing I got from you was the 36 inch Poultry Wire and sure was good. I could not get that wire here for less than \$6.00. I got it of Henry for \$4.95 for 150 feet. And the posts were all O. K., too. Everything we order from Henry Field is just what he says it is, just extra good."—Mrs. E. J. Wessel, Unionville, Mo.

Poultry and Rabbit Wire

Top Wire No. 11, Bottom Wire No. 12, Intermediate Wires No. 14½. Hinged joint construction.

10 Rod Rolls Only

Height	Price f.o.b. here	Wt. per 10 rd. roll
36 in.	\$4.45	70 lbs.
48 in.	5.35	85 lbs.
58 in.	5.95	98 lbs.

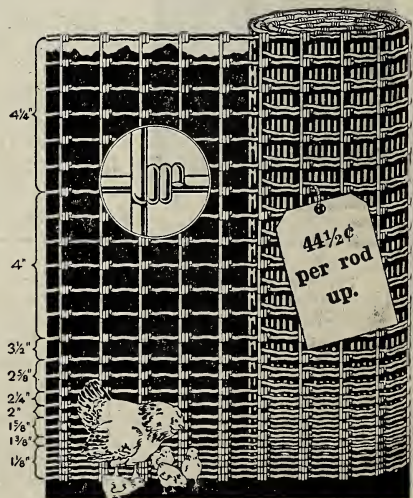
This is a real poultry wire. It is heavy, stiff, stands up well and holds its shape. Where the chickens all run together the smaller, weaker ones are run over and held back. Fence them separately for greatest profits. And you want to keep the chickens out of the yard and garden, too, and this is just what you need.

Make More from Chickens

Chickens need range. You can't run them all together and make them pay. The little fellows must be off to themselves.

Chickens are good money makers when properly cared for and deserve more attention than they usually get. You can make a lot more money from them if you fence off pens or runs so they won't all be together.

And in fairness to your garden and the flowers and grass in your yard you should have them fenced chicken tight.



Good Fences, Livestock & Legumes

Build good hog tight fences around all your fields. Grow plenty of sweet clover and clovers and alfalfa. If you don't want to cut it for hay, pasture it. An acre of any one of these legumes is equal to 2 or 3 or 4 acres of any blue grass I ever saw. And feeding it right on the land saves haying and manure hauling and a lot of work and the stock does better on range.

A good rule is to never put corn on land more than 2 years straight. Then back to grain and legumes.

If you have trouble getting a stand of clovers or alfalfa try applying ground limestone (usually about 2 tons per acre) or Super-phosphate (200 lbs. per acre). Write us your troubles.

With good fences all over the place you can raise legumes and livestock without breaking your back putting up so much hay or hauling manure. Feed and pasture the crops right on the land. It improves your soil and you will make more money with less work.

FIELD'S FAMOUS FARM FENCE



"T" Style Fence Posts

Made of Carbon Rail Steel

35¢ each in bundles of 5 - 6½ ft. long, Wt., about 9 lbs. F.O.B. Shenandoah.

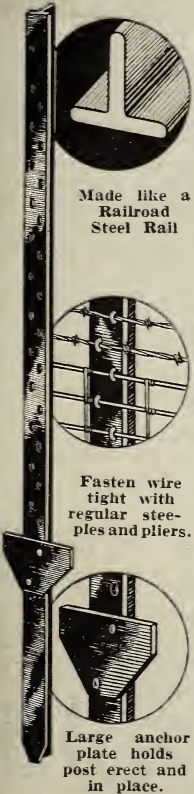
These posts are made of Carbon Rail Steel and that means extra quality and extra strength. The T style of construction also adds strength. Even when driving them into the hardest ground they won't bend. They are better in every respect than wood posts. Will last 2 or 3 times as long and are cheapest in the long run. Once the wire is fastened to the post with common long staples and pliers or a staple tool it can't come loose. No chance for them to fly out like in wood posts.

Once you make a fence with these rail steel posts your fencing worries are over. The large anchor plate bottom is riveted to the post and holds the post solidly in position. And I don't need to tell you how much neater and better these posts will make your place look. In burning off your fields the steel posts won't catch fire. If you don't agree that this is the best post you ever saw we will pay the freight both ways and send your money back. Price 35¢ each in bundles of 5. These are 6½ feet long and weigh about 45 lbs. per bundle. Painted with weather resisting paint. F.O.B. Shenandoah.

"I am well pleased with the fencing I ordered from you. It's so good that I want more and am going to get more real soon, too."—Frank Ashcraft, Odessa, Mo.

"The fence I got from you is very good fence - full measure and when up it is a straight, good looking fence. We know we made a substantial saving on both fence and posts."—Mrs. Norma C. Adkins, Des Moines, Iowa.

"Field's Fencing is as good as any I ever saw - regardless of price. And I sure saved money on it, too."—Mr. F. N. Bell, Thayer, Ia.



Made like a Railroad Steel Rail

Fasten wire tight with regular staples and pliers.

Large anchor plate holds post erect and in place.

Corner Posts \$5.30, End Posts \$3.80

Ship Wt. - corner 90 lbs., end 60 lbs., F.O.B. Shenandoah

I don't believe money can buy sturdier, better made corner or end posts than these. They are cut from angle rail carbon steel, 2x2x¼ inches. End post has one complete brace. Corner post has two complete braces, and are 7½ feet long. The braces are of the same material, 7 feet long and fasten to the posts with bolt-on collars. Come painted with weather-resisting paint in red only. Set these posts and braces in cement and you'll have an anchorage that will hold your fence tight for years to come. We guarantee them to be equal or better than any you ever saw or you can have your money back.

Standard Woven Wire

Top and bottom wires No. 10 - Intermediate wires No. 12½ - Stays 6 in. apart

Size	Price per rd.	Wt. 20 rd. roll	Wt. 30 rd. roll	Wt. 40 rd. roll
26 in.	35¢	130 lbs.	195 lbs.	260 lbs.
32 in.	40¢	152 lbs.	228 lbs.	304 lbs.
39 in.	45¢	190 lbs.	285 lbs.	380 lbs.

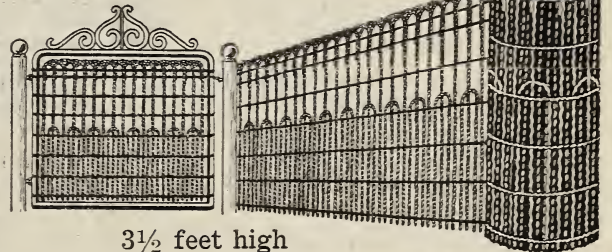
All fencing F.O.B. Shenandoah.

The life of any fence depends on the galvanizing. As quick as the galvanized coat wears off the wire soon rusts out and is easily broken by stock. All our fence is made in one of the large fencing factories and goes through a double process of coating each wire. This makes it resist the weather twice as long as the single process wire.

Before buying wire compare specifications. That means size of wires, distance stays are apart, how heavily it is galvanized, etc.

We don't pretend to sell the cheapest wire but we do sell the best grade you will find at a reasonable price. In comparing prices, compare ours only with the best grades on the market.

Ornamental Fence



3½ feet high

50 ft. roll \$6.50 - 100 ft. roll \$12.95

F. O. B. Shenandoah - Wt. about 180 lbs. per 100 ft.

Nothing sets off a farm or home more than a pretty fence and a well kept yard. Besides it keeps out the chickens and allows the flowers and grass to grow. The picture above shows the style which is the popular, approved type now so generally used for lawns, yards, gardens or parks. The wires are heavy, thoroughly coated with galvanized and will last for years.

Lawn Gates to Match

Made to match our lawn fence. Exactly like picture above. Comes in two sizes.

Size	Wt.	Price
42-in.x36-in.	17 lbs.	\$2.95
42-in.x42-in.	18 lbs.	3.15

Fence Prices F.O.B. Shenandoah (Subject to Change without Notice).

Oxheart Tomato

We have had so many inquiries for this tomato that we got a small amount for those who would like to try it. We offer it in packets only.

We have had it in our trial garden but not long enough to say a great deal about it. However, from the number of people that are asking for it, and from what we hear about it, it must be extra good.

It is a large tomato, heart shaped, few seed and the strain we offer is purple skinned. I think the quality must be largely responsible for the demand. We can furnish it in packets as long as our supply lasts at 15¢ per packet.

Cut Flower Collection

Grow an abundance of cut flowers for yourself and to give away. Decorate your living room and the dining table with flowers. Grow some for your church, your friends and sick folks. You can grow them from seed at a very slight expense. We offer two collections below, which does not include all the flowers for this purpose by any means but some of the best:

1931—Annual Cut Flower Collection

One packet each Asters, American Branching Mixed; Zinnia, California Giants, Mixed; Sweet Peas, Spencer Mixed; Annual Larkspur, Double Mixed; Snapdragon, Mixed. 45¢.

1928—Perennial Cut Flower Collection

One packet each Delphinium, English Hybrids Mixed; Shasta Daisy, Mixed; Pyrethrum roseum Mixed; Coreopsis lanceolata; Gypsophila. 45¢.

1925—SPECIAL OFFER. The two above Cut Flower Collections, for 75¢.

Order by Number.



Dear Mr. Field:

"Am sending you a picture of my lily pool. Thought maybe you could use it. We just made it last spring and we've surely enjoyed it so much. I have quite a good many fish in it. My lilies and all my water plants did fine.

"Wishing you much success, I remain your interested listener,

Mrs. E. R. Pitts,
Concordia, Kansas.

Long Life "B" Batteries



We have made history with these KFNFB "B" Batteries and it is a history that we are mighty proud of. We've sold thousands of them. Our customers say they last longer, give a smoother flow of current and have more pep to bring in the distant stations with real volume. (They are made for us by one of the biggest manufacturers in the battery business and would cost you a good deal more under the manufacturer's own label than we sell them.)

2 For \$5.00
1 For \$2.50
45 Volt Heavy Duty

Postpaid in Zones 2 & 3

45 volt Regular \$2.00 each (used in 1 and 2 tube sets)

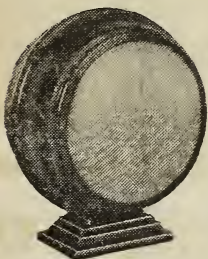
KFNFB "B" Batteries are scientifically designed and expertly constructed. The materials are of the best, too. We buy them in carload lots every few days. And your order will be filled from this fresh-from-the-factory stock. They don't lay around for weeks in jobber's warehouses and on dealer's shelves. They reach you fresh and full of pep and power. We are sure you will never use any other B Batteries once you see how much better ours prove on your set - and you will make a good, big saving in the deal.

½ Volt "C" Battery - 35c Postpaid in Zones 2 & 3.

Sweet and Clear Tone Loud Speaker \$10.00

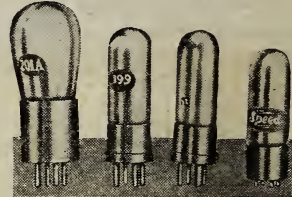
Postpaid in Zones 2 & 3.

Even if you think you have a fairly good speaker you ought to think twice about this one at \$10.00. It's a rich-toned clear-toned speaker, one that can handle volume without distortion. Looks good, too. Originally sold for \$12.00 and was considered a good bargain at that price. It was so successful that our volume increased to where we could lower the price to \$10.00. Write your own guarantee and return it if it isn't all you expect.



For Distance and Volume Use KFNFB Radio Tubes

Guaranteed for 1 Year



We will start right out with our Tube Guarantee: Put our tubes in your set - if they aren't the best you've ever had and better than any you want to try out against them - send them back for a refund. And they are guaranteed for one year (unless you actually break them or burn them out. As far as I know ours are the only absolutely guaranteed tubes on the market. You can fire them right back if all I've said isn't so. Safe arrival is guaranteed, of course.

I don't know what I can add to that. Our tubes will give you good clear tones, volume without blur and they are guaranteed to keep it up for 1 year. I don't think you can equal that guarantee and I am sure you can't do as well as far as price is concerned.

Note: It is generally a good idea to replace all your tubes at one time because you can't always be sure which one is bad. Then you can use the best of the old ones for "spares."

IMPORTANT - Be sure to specify number of tube and style of base wanted, or name of set and equipment used.

Storage Battery Tubes

		Base	Price
201A	General purpose tube, storage battery set	A	\$.85

Dry Cell Tubes

X199	For dry cell sets, long prongs	B	1.00
UV199	For dry cell sets, short prongs	C	1.00
WD11	Use for replacement only	D	1.25
WX12	Same as WD11, but with different base	A	1.25

Power Tubes

112A	Use if not over 135 volts	A	1.75
171A	Use if over 135 volts	A	1.75
120	Dry Cell sets	B	1.75

Be sure your set is made to use power tubes before ordering.

A. C. Tubes for Electric Sets

226	Filament type to replace 326 type	A	1.25
227	Heater type. Has special five-prong base	A	1.75
280	Full wave rectifier tube	A	2.00
224	Screen Grid Detector Amplifier, 5 prong	A	2.75
245	Screen Grid Power Tube	A	2.25

Postpaid in Zones 2 & 3.



Base A



Base B



Base D



Base C

Base A - Storage battery tube. Two thick and two thin, long prongs. Also replaces old UV Base.

Base B - Dry cell tube. Two thick and two thin, long prongs.

Base C - Dry cell tube. Four short equal prongs.

Base D - Dry cell tube. One thick and three thin long prongs. For sets using WD type of tubes.

House Paint with a Guarantee

ANY COLOR HOUSE PAINT

\$2.50

FREIGHT PAID IN 5 GALS. OR MORE ANYWHERE EAST OF THE ROCKY MOUNTAINS



Let's Look Ahead A Few Years

Pride isn't the only thing to consider when you are deciding whether to Paint now or put it off—although nobody blames a fellow for being a little ashamed of a place that's so dull and shabby it looks deserted.

No, it isn't all a matter of pride. The fact is you may put off painting but you can't put off the rotting and decaying. You can't stall the weather off. And the longer you put it off the more damage will be done and the more paint it will take to do the job right.

So, don't fool yourself any about this painting. It is actually cheaper to put the paint on now than to put it off.

FREE OIL and BRUSH

With every 5 gallons of House Paint you order we will include FREE 2 gallons of Linseed Oil. Also with each order for paint of any kind amounting to 5 gallons or more we will send FREE one high quality 4-inch paint brush.

Clear, Clean and Bright Colors

One of the things you can absolutely count on when you order your paint from us is this: The colors will be the clean, clear and distinctive kind that you want on your home. You've seen some that were dull and sort of muddy in appearance. But you won't see any like that from us. And our white paint is really white, too.

Now while you're about it you might as well do the job right. Don't stop with the house. Give the other buildings a good painting, too. Yes, paint the fence while you're at it and, of course, the barn.

On the inside pages you will find a complete list of our different paints. Look them all over and then make up your order. We can save you money and will send you paint that carries the strongest guarantee we know of.

Here's My Guarantee
Order it at My Risk!

Use 2 gallons out of your paint order when it comes. If it doesn't convince you of all we claim for it just fire it back to me. You are welcome to the 2 gallons and we will see that you aren't out anything for freight on the deal, either.

I know you will find that our paint spreads easier and better, that it covers more surface and looks better than any you have ever used or seen. Thousands of customers tell us that all the time.

But, you don't have to take my word for it or anybody's. Just send along your order and decide after you have used 2 gallons of it. And after any reasonable length of time if the paint doesn't give the service you are entitled to we will send you paint free to repaint the job. Now get busy and send your order.



YOUR CHOICE OF 20 COLORS

- | | |
|--------------|-----------------|
| White | Tobacco Brown |
| Black | Light Buff |
| Myrtle Green | Apple Green |
| Terra Cotta | Pearl Gray |
| Rose Pink | Slate Color |
| Maroon | Bungalow Brown |
| Sky Blue | Cream |
| Red Oxide | Colonial Yellow |
| Light Lead | French Gray |
| Ivory | Shutter Green |

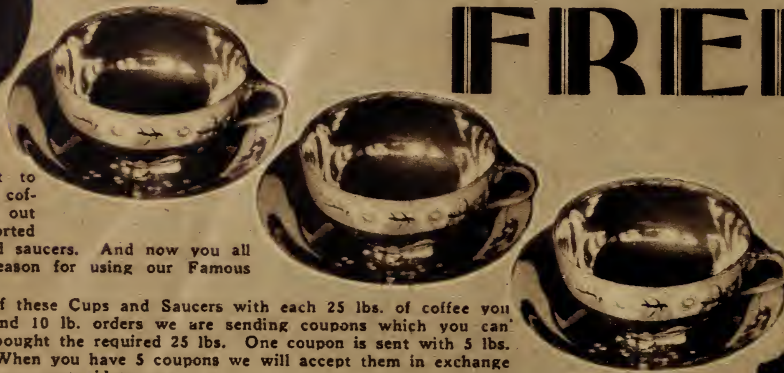
Color Card on Request

Henry Field Seed Company
SHENANDOAH, IOWA

3

Beautiful Imported Lustre Ware Cups and Saucers

IRIEIE WITH 25 lbs. of Coffee



As a special gift to those who use our coffee I am sending out these beautiful, imported Lustreware cups and saucers. And now you all have still another reason for using our Famous Coffee.

We are giving 3 of these Cups and Saucers with each 25 lbs. of coffee you buy, and on 5 lb. and 10 lb. orders we are sending coupons which you can save until you have bought the required 25 lbs. One coupon is sent with 5 lbs. and 2 with 10 lbs. When you have 5 coupons we will accept them in exchange for 3 Cups and Saucers—postpaid to you.

I know the pictures here can't possibly do these beautiful Lustreware justice so I am going to give you as nearly as possible a word description of them.

They are of a beautiful light golden tan and deft blue iridescent two-tone lustreware with a Cherry Blossom decoration in natural blush white with green and black twigs. Lavender and bronze highlights give a delicate and lovely appearance. The combination of bands of blue and tan make a very dainty effect enhanced by the beautiful Cherry Blossom design. The cup is about 4 inches across the top. The saucer is 5½ inches across.

Now, get busy. Order your coffee and get your set started. You can return the favor by telling your friends about this special deal and showing your Cups and Saucers to them when they come.

POSTPAID ANYWHERE
5 lb. Bag - \$ 2.40
10 lb. Bag - \$ 4.60
25 lb. Bag - \$11.00

Henry Field's Famous Overalls



2 PAIR for \$3.25

**POSTPAID
IN
ZONES 2 AND 3**

This is the overall that about 10,000 of you folks helped me design over 3 years ago. I guess more than a hundred thousand of you are wearing them now. We farmers at KFNF decided to make the best overall ever made and everyone tells us we have sure delivered the goods.

Big and roomy and comfortable for work. Husky and hard to wear out. Full 8 oz. Blue Denim that has been carefully pre-shrunk before you get it and will hold its color with any you've ever seen and better than most. Pockets for every purpose and strong re-enforcing at all points of strain. Just the best you've ever had and guaranteed that way—with you to be the judge.

Men's Sizes over 44 are 2 for.....\$3.58

BOYS' SIZES

Ages 3 to 8, inc.....\$.90
 Ages 9 to 14, inc.....1.10
 Ages 15 to 18, inc.....1.25

Postpaid in Zones 2 and 3.

Jackets Same Prices As Overalls

Hosiery Special

**PURE
THREAD Silk from Top to Toe**

**3 PAIR
\$2.75
POSTPAID IN
ZONES
2 AND 3**

Gracefully narrowed at the ankle and with distinguishing fashion marks, these hose will prove the best and finest bargain you ever had in stockings. The heel is the stylish French panel. Shapely foot with inner re-enforcing of fine texture lisle. And they are absolutely guaranteed Pure Thread Silk from top to toe.

Now, you aren't going to know what a real offer this is until you unwrap the package and see them for yourself. So, we say—order them at our risk. Then send them back if they aren't right up to your expectations when they come.

All the newest colors including: Atmosphere, Breeze, Champagne, Cuban Sand, French Nude, Grain, Myserv, Rose Taupe, Sandust, Sun Tan, Wrought Iron, Black, White and other popular shades.



**Pure
Silk**