

Novelty
WEAVING
Suggestions



Jiffy-Loom
patterns
ORIGINAL IDEAS

PREFACE

It gives us great pleasure to introduce this new and entirely original process of novelty weaving with the Jiffy Loom—a method by which you may obtain an almost endless variety of clever, attractive designs and patterns in hand-weaving such as have never before been possible on any hand-loom.

The first step is to become familiar with the new method of threading the loom. Follow the instructions on Page 3 carefully, noting that the Jiffy Loom is first threaded from sides A to C, then from C to A, after which the weaving process with the needle is begun from sides B to D, holding side C of the loom toward you. Note that on the first weaving, beginning with the row numbered 1, (being the second row up from side C on the pattern), every other row is first put in place. After finishing Line 16, Line 17 follows, being the first row of weaving on the downward (or finish) stretch. In other words, the loom is threaded two ways and woven two ways, varying the usual procedure of threading three ways and weaving one.

Where a contrasting color is desired, one color may be used for threading the loom and another color for weaving, which brings out the design in relief. If the darkest color is used for threading, the background will predominate; if the darkest color is woven in, the design will predominate.

For the beginner in this new process of novelty weaving, extreme care is necessary to follow the diagram exactly and avoid any imperfections in the finished pattern. When a design has been made two or three times, it becomes a simple matter to follow it accurately with only a few references to the diagram.

Patterns and designs which you may originate, or may wish to copy on your Jiffy Loom, should be first laid out on graph paper, such as may be purchased at any stationer's, numbering each row to make it easier to follow your pattern.

Any of the designs shown in this book may be adapted to the various sizes of Jiffy Looms. For the 4x8-inch block, the pattern is doubled; to cut down the size of the pattern, allow eight stitches plus one for every inch of pattern desired. For instance, a two-inch square block would require a square 17 stitches each way; a 2x4-inch block would be 17 stitches by 33 stitches, etc.

Join squares of novelty weaving in the usual manner, attaching scallops with an overcast stitch, fagoting, a crochet chain stitch or, if preferred, the edges may be machine-stitched together.

TO READ PATTERN DIAGRAMS

Graph paper is used in diagramming the patterns, and each block, or square, represents one stitch, there being 33 blocks (or threads when loom is threaded) to the four-inch block. To follow the rows of the diagram place a rule or strip of cardboard under the row being woven.

The horizontal lines indicate OVER stitches, the vertical lines are UNDER stitches. Therefore, a line showing two blocks horizontal, one block vertical, two blocks horizontal, would be interpreted Over 2, Under 1, Over 2, or O2, U1, O2.

ABBREVIATIONS USED

O	Over
U	Under
PL.W.	Plain Weaving, Over 1, Under 1.
ST.	Stitches
R	Row

JIFFY LOOM DIRECTIONS FOR NOVELTY WEAVING

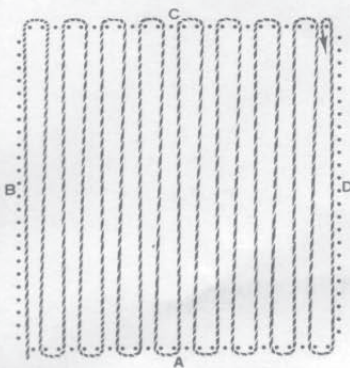


FIGURE 1. First anchor thread in slot on Side A, then pass it to the left, or ahead of the first pin on Side A, draw thread across from Sides A to C as in illustration, taking up first two pins on Side C and leaving one on Side A. Do not draw thread too tightly. Take note that each time two pins are taken in, leaving one, and on this first threading across, thread will come out between the 22nd and 23rd pins.

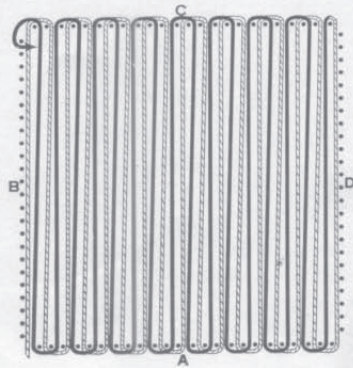


FIGURE 2. Pass thread around last two pins on Side A, turn loom half around so as to work from Side C. Draw thread across and around first pin on Side C and work from sides C to A, the same as in Figure 1, following the above illustration. If contrasting color is desired, break thread at finish of threading and join new color.

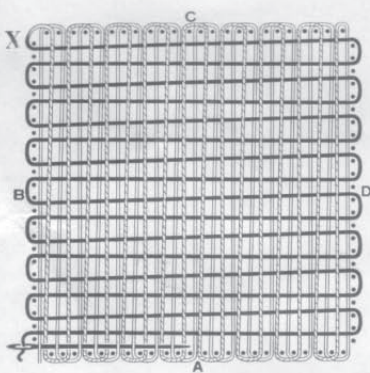


FIGURE 3. Measure off sufficient thread for weaving by winding about the outside of pins nine times for 4-inch block or 13 times for a 4x3 inch block, then thread Jiffy Needle. Pass thread around first pin on Side B, weave in the row numbered 1 on whichever pattern is being followed, bringing needle out ahead of first pin on Side D. Draw thread through, take up first two pins and weave in row numbered 2 on pattern.

**START WITH NEEDLE
AT POINT MARKED WITH (X)**

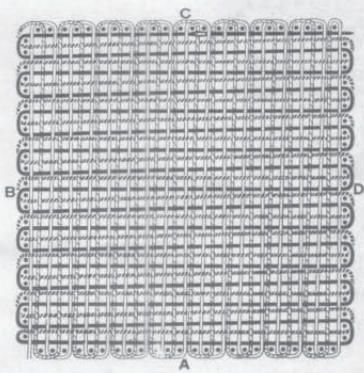
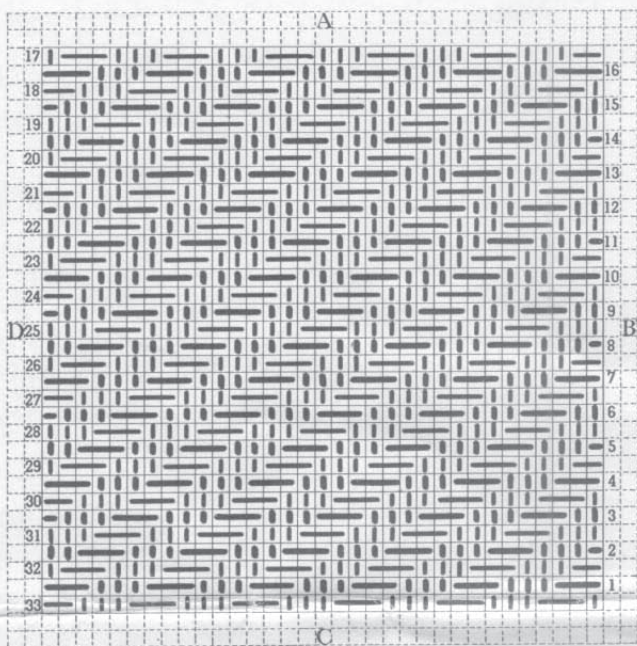
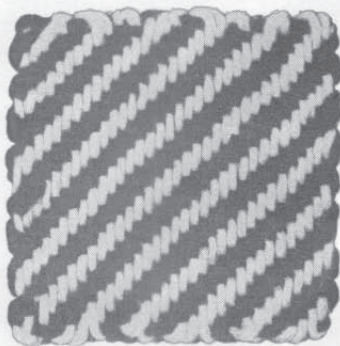


FIGURE 4. Row 17 of the Pattern is woven in next to pins as the anchoring row on Side A, as illustrated above, taking in two pins and leaving one as in plain weaving. Row 33 is the anchoring row on Side C and should also be put in next to pins. Run end of yarn back into work to finish, and before lifting work from frame, be sure to stroke weaving well outward to all four edges to minimize size of loops, also distribute threads of pattern evenly throughout block for regularity of pattern.

PATTERN NO. 1

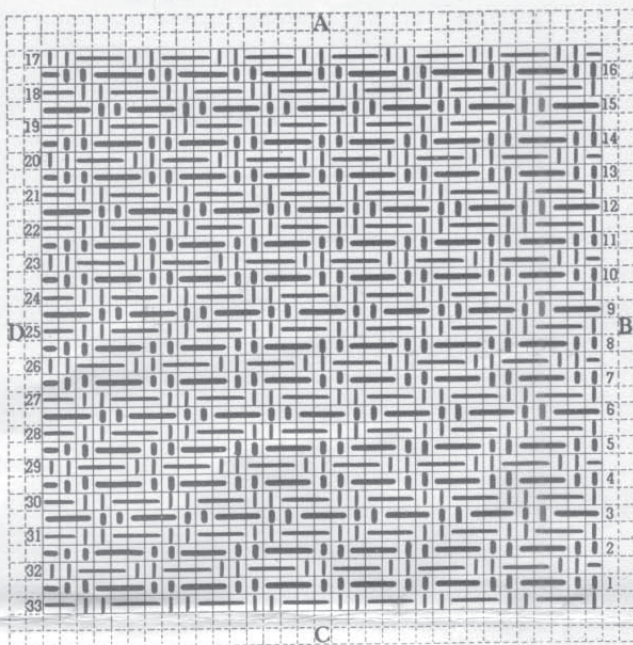


- Row 1—O3, U3 across entire row.
 Row 2—Start row U2, end O1. Rest of row, O3, U3.
 Row 3—Repeat directions for Row 2.
 Row 4—Repeat directions for Row 1.
 Row 5—Start row O1, end U2. Rest of row U3, O3.
 Row 6—Repeat directions for Row 5.
 Row 7—Repeat directions for Row 1.
 Row 8—Repeat directions for Row 2.
 Row 9—Repeat directions for Row 2.
 Row 10—Repeat directions for Row 1.
 Row 11—Repeat directions for Row 5.
 Row 12—Repeat directions for Row 5.
 Row 13—Repeat directions for Row 1.
 Row 14—Repeat directions for Row 2.
 Row 15—Repeat directions for Row 2.
 Row 16—Repeat directions for Row 1.
 Row 17—Start row O2, end U1. Rest of row, U3, O3.
 Row 18—Repeat directions for Row 17.
 Row 19—Entire row U3, O3.
 Row 20—Start row U1, end O2. Rest of row, O3, U3.
 Row 21—Repeat directions for Line 20.
 Row 22—Repeat directions for Line 19.
 Row 23—Repeat directions for Line 17.
 Row 24—Repeat directions for Line 18.

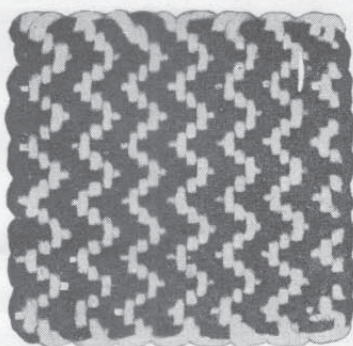


- Row 25—Repeat directions for Line 19.
 Row 26—Repeat directions for Line 20.
 Row 27—Repeat directions for Line 20.
 Row 28—Repeat directions for Line 19.
 Row 29—Repeat directions for Line 17.
 Row 30—Repeat directions for Line 18.
 Row 31—Repeat directions for Line 19.
 Row 32—Repeat directions for Line 20.
 Row 33—Repeat directions for Line 20.

PATTERN NO. 2

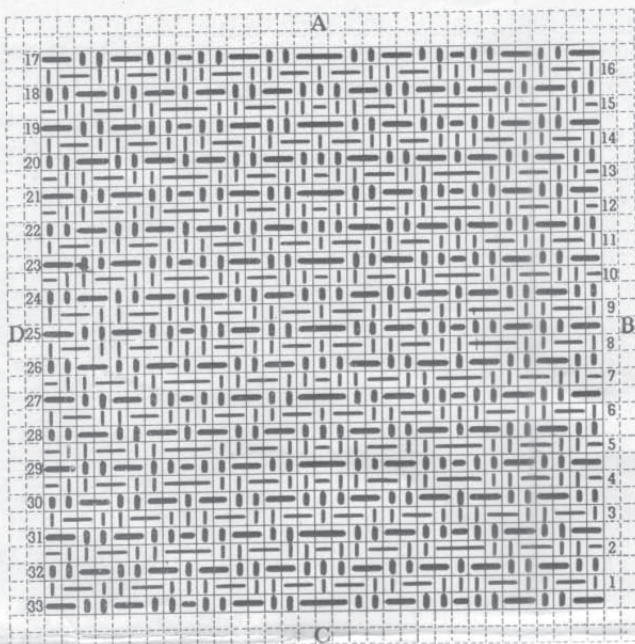


- Row 1—Entire row U2, O3, ending with U2, O1.
- Row 2—Start row O1, end U2, rest of row U2, O3.
- Row 3—Entire row O3, U2.
- Row 4—Repeat directions Row 2.
- Row 5—Repeat directions Row 1.
- Row 6—Repeat directions Row 3.
- Row 7—Repeat directions Row 1.
- Row 8—Repeat directions Row 2.
- Row 9—Repeat directions Row 3.
- Row 10—Repeat directions Row 2.
- Row 11—Repeat directions Row 1.
- Row 12—Repeat directions Row 3.
- Row 13—Repeat directions Row 1.
- Row 14—Repeat directions Row 2.
- Row 15—Repeat directions Row 3.
- Row 16—Repeat directions Row 2.
- Row 17—Repeat directions given for Row 2.
- Row 18—Start row O2, end U1. Rest of row U2, O3.
- Row 19—Start row U1, end O2. Rest of row O3, U2.
- Row 20—Repeat directions as given for Row 1.
- Row 21—Repeat directions Row 19.
- Row 22—Repeat directions Row 18.
- Row 23—Repeat directions Row 17.
- Row 24—Repeat directions Row 18.
- Row 28—Same as Row 22, etc.



- Row 25—Repeat directions Row 19.
- Row 26—Repeat directions Row 1.
- Row 27—Repeat directions Row 19.
- Row 28—Repeat directions Row 18.
- Row 29—Repeat directions Row 17.
- Row 30—Repeat directions Row 18.
- Row 31—Repeat directions Row 19.
- Row 32—Repeat directions Row 1.
- Row 33—Repeat directions Row 19.

PATTERN NO. 3

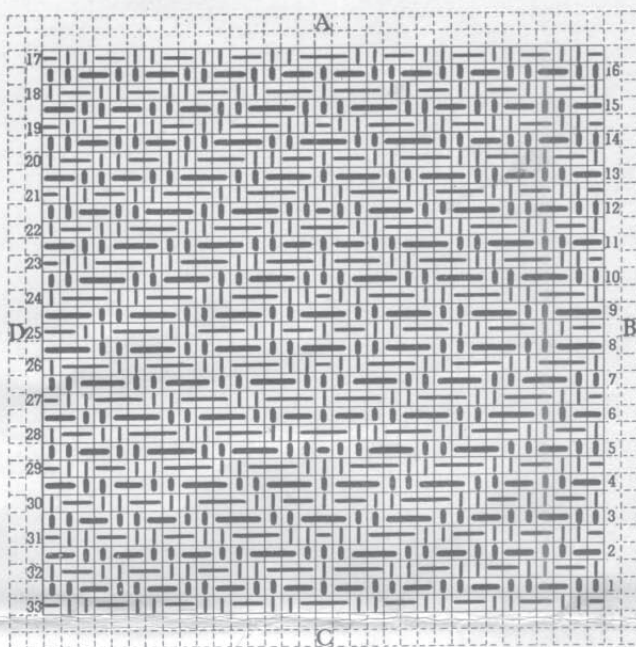


- Row 1—U1, O2, U2, O2, U3, O2, U2, O2, U1,
O2, U2, O2, U3, O2, U2, O2, U1.
- Row 2—O1, U2, O2, U2, O3, U2, O2, U2, O1,
U2, O2, U2, O3, U2, O2, U2, O1.
- Row 3—Same as Row 1.
- Row 4—Same as Row 2.
- Row 5—Same as Row 2.
- Row 6—Same as Row 1.
- Row 7—Same as Row 2.
- Row 8—Same as Row 1.
- Row 9—Same as Row 1.
- Row 10—Same as Row 2.
- Row 11—Same as Row 1.
- Row 12—Same as Row 2.
- Row 13—Same as Row 2.
- Row 14—Same as Row 1.
- Row 15—Same as Row 2.
- Row 16—Same as Row 1.
- Row 17—O2, U2, O2, U2, O1, U2, O2, U2,
O3, U2, O2, U2, O1, U2, O2, U2,
O2.
- Row 18—U2, O2, U2, O2, U1, O2, U2, O2,
U3, O2, U2, O2, U1, O2, U2, O2,
U2.
- Row 19—Same as Row 17.
- Row 20—Same as Row 18.
- Row 21—Same as Row 17.
- Row 22—Same as Row 18.
- Row 23—Same as Row 17.

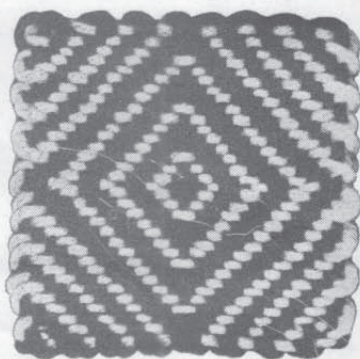


- Row 24—Same as Row 18.
- Row 25—Same as Row 17.
- Row 26—Same as Row 18.
- Row 27—Same as Row 17.
- Row 28—Same as Row 18.
- Row 29—Same as Row 17.
- Row 30—Same as Row 18.
- Row 31—Same as Row 17.
- Row 32—Same as Row 18.
- Row 33—Same as Row 17.

PATTERN NO. 4

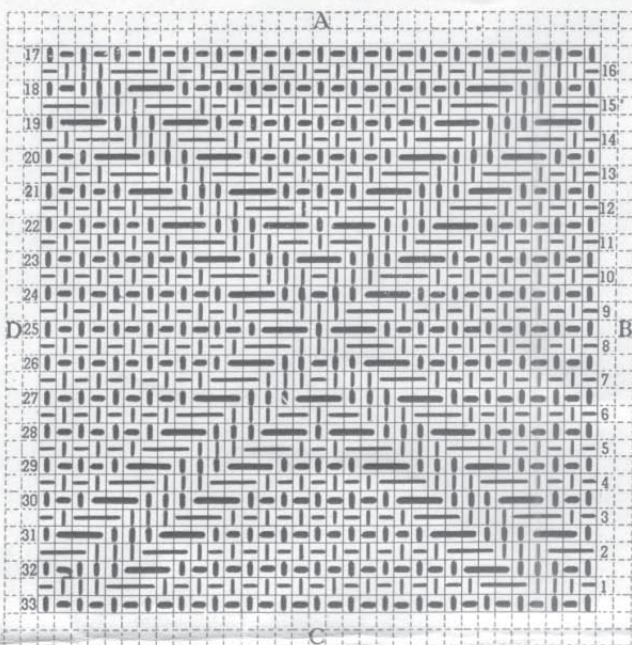


- Row 1—Entire row U2, O2, except St. 17 (U1).
- Row 2—O2, U2, to St. 13. O13, 14, 15, U16, 17, 18, O19, 20, 21, U2, O2, etc.
- Row 3—Entire row U2, O2, except O15, 16, 17.
- Row 4—O2, U2, O2, U2, O3, U2, O3, U1, O3, U2, O3, U2, O2, U2, O2.
- Row 5—U2, O2, U2, O3, U2, O3, U2, O1, U2, O3, U2, O3, U2, O2, U2.
- Row 6—O2, U2, O3, U2, O3, U2, O2, U1, O2, U2, O3, U2, O3, U2, O2.
- Row 7—U2, O3, U2, O3, U2, O3, U3, O3, U2, O3, U2, O3, U2.
- Row 8—Entire Row C3, U2.
- Row 9—Same as Row 8.
- Row 10—Same as Row 7, etc.
- Row 17—O1, U2, O2, U2, O2, U2, O2, U2, O3, U2, O2, U2, O2, U2, O2, U2, O1.
- Row 18—U1, O2, U2, O2, U2, O2, U2, O3, U1, O3, U2, O2, U2, O2, U2, O2, U1.
- Row 19—O1, U2, O2, U2, O2, U2, O3, U2, O1, U2, O3, U2, O2, U2, O2, U2, O1.
- Row 20—U1, O2, U2, O2, U2, O3, U2, O2, U1, O2, U2, O3, U2, O2, U2, O2, U1.
- Row 21—O1, U2, O2, U2, O3, U2, O3, U3,

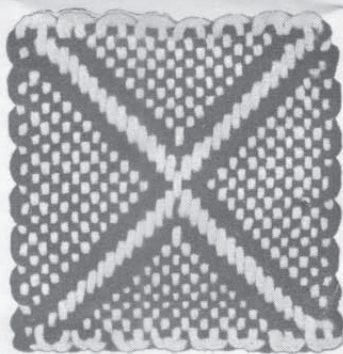


- Row 22—O3, U2, O3, U2, O2, U2, O1, U1, O2, U2, O3, U2, O3, U2, O3, U2, O3, U2, O1.
- Row 23—O1, U2, O3, U2, O3, U2, O3, U1, O3, U2, O3, U2, O3, U2, O1.
- Row 24—U1, O3, U2, O3, U2, O3, U2, O1, U2, O3, U2, O3, U2, O3, U1.
- Row 25—Same as Row 6.
- Row 26—Same as Row 24.
- Row 27—Same as Row 23, etc.

PATTERN NO. 5

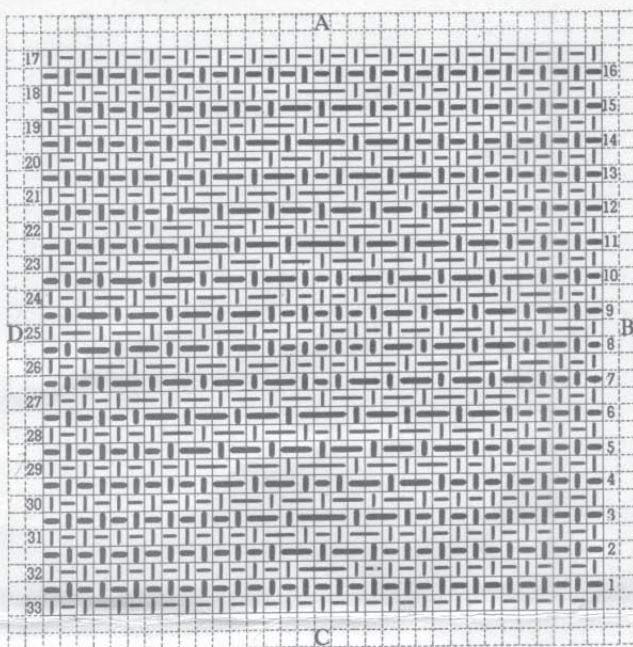


- Row 1—O1, U3, O3, Pl.W. 19 St., O3, U3, O1.
 Row 2—O3, U3, O3, Pl.W. 15 St., O3, U3, O3.
 Row 3—O1, U1, O3, U3, O3, Pl.W. 11 St., O3, U3, O3, U1, O1.
 Row 4—O1, U1, O1, U1, O3, U3, O3, Pl.W. 7 St., O3, U3, O3, U1, O1, U1, O1.
 Row 5—Pl.W. (O1, U1) 6 St., O3, U3, O3, U1, O1, U1, O3, U3, O3, Pl.W. 6 St.
 Row 6—Pl.W. (O1, U1) 8 St., O3, U3, O2, U1, O2, U3, O3, Pl.W. 8 St.
 Row 7—Pl.W. (O1, U1) 10 St., O3, U3, O1, U3, O3, Pl.W. 10 St.
 Row 8—Pl.W. (O1, U1) 12 St., O3, U3, O3, Pl.W. 12 St.
 Row 9—Same as Row 8.
 Row 10—Same as Row 7.
 Row 11—Same as Row 6
 Row 12—Same as Row 5.
 Row 13—Same as Row 4.
 Row 14—Same as Row 3.
 Row 15—Same as Row 2.
 Row 16—Same as Row 1.
 Row 17—Plain Weaving.
 Row 18—U1, O1, U3, O3, Pl.W. 17 St., O3, U3, O1, U1.
 Row 19—U1, O3, U3, O3, Pl.W. 13 St., O3, U3, O3, U1.
 Row 20—U1, O1, U1, O3, U3, O3, Pl.W. 9 St., O3, U3, O3, U1, O1, U1.
 Row 21—U1, O1, U1, O1, U1, O3, U3, O3,

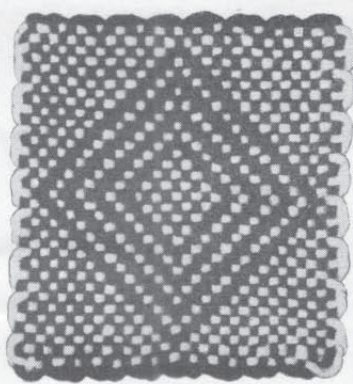


- Pl.W. 5 St., O3, U3, O3, U1, O1, U1, O1, U1.
 Row 22—Pl.W. (U1, O1) 7 St., O3, U3, O3, U1, O3, U3, O3, Pl.W. 7 St.
 Row 23—Pl.W. (U1, O1) 9 St., O3, U3, O3, U3, O3, Pl.W. 9 St.
 Row 24—Pl.W. (U1, O1) 11 St., O3, U2, O1, U2, O3, Pl.W. 11 St.
 Row 25—Pl.W. (U1, O1) 13 St., O3, U1, O3, Pl.W. 13 St.
 Row 26—Same as Row 24.
 Row 27—Same as Row 23.
 Row 28—Same as Row 22, etc.

PATTERN NO. 6

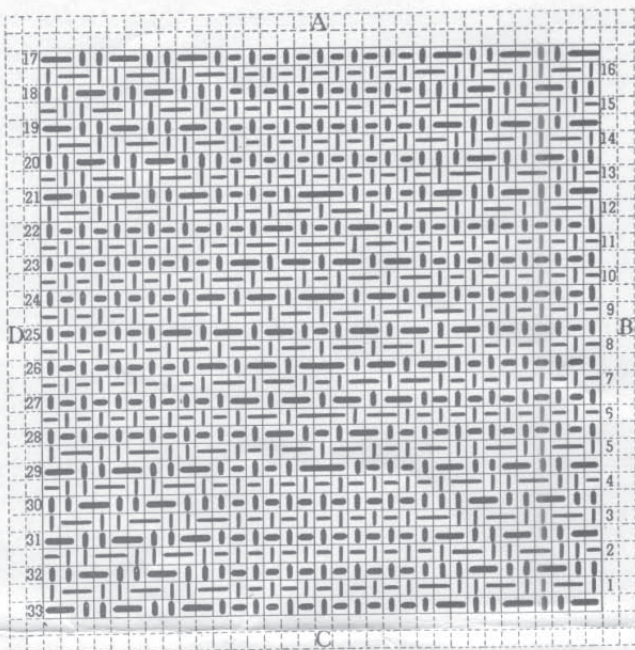


- Row 1—Plain Weaving, starting O1, U1, to end of row.
- Row 2—Pl.W. (O1, U1) 14 St., O2, U1, O2, Pl.W. 14 St.
- Row 3—Pl.W. (O1, U1) 12 St., O2, U1, O3, U1, O2, Pl.W. 12 St.
- Row 4—Pl.W. (O1, U1) 10 St., O2, U1, O2, U1, O1, U1, O2, U1, O2, Pl.W. 10 St.
- Row 5—Pl.W. (O1, U1) 8 St., O2, U1, O2, U1, O2, U1, O2, U1, O2, U1, O2, Pl.W. 8 St.
- Row 6—Pl.W. (O1, U1) 6 St., O2, U1, O2, U1, O2, U1, O3, U1, O2, U1, O2, Pl.W. 6 St.
- Row 7—St. 1 to 4, O1, U1; St. 5 to 29, O2, U1; St. 30 to 33, U1, O1.
- Row 8—C1, U1, O2, U1, O2, U1, O2, U1, O2, U1, O1, U1, O1, U1, O1, U1, O2, U1, O2, U1, O2, U1, O1.
- Row 9—Same as Row 8.
- Row 10—Same as Row 7, etc.
- Row 17—Plain Weaving, starting U1, O1, etc.
- Row 18—Pl.W. (U1, O1) 15 St., O St. 16, 17, 18, Pl.W. 15 St.
- Row 19—Pl.W. (U1, O1) 13 St., O2, U1, O1, U1, O2, Pl.W. 13 St.
- Row 20—Pl.W. (U1, O1) 11 St., O2, U1, O2, U1, O2, U1, O2, Pl.W. 11 St.

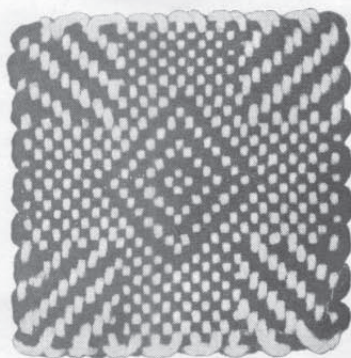


- Row 21—Pl.W. (U1, O1) 9 St., O2, U1, O2, U1, O3, U1, O2, U1, O2, Pl.W. 9 St.
 - Row 22—Pl.W. (U1, O1) 7 St., O2, U1, O2, U1, O2, U1, O1, U1, O2, U1, O2, U1, O2, Pl.W. 7 St.
- Carry out pattern to finish of Row 33 by following diagram above.

PATTERN NO. 7



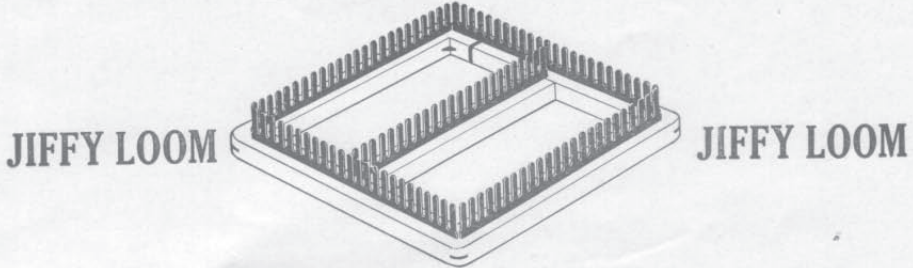
- Row 1—U1, O2, U2, O2, U2, O2, Pl.W. 11 St.,
O2, U2, O2, U2, O2, U1.
- Row 2—O1, U2, O2, U2, O2, Pl.W. 15 St., O2,
U2, O2, U2, O1.
- Row 3—Same as Row 1.
- Row 4—Same as Row 2.
- Row 5—U1, O2, U2, O2, U2, O2, U1, O1, U1,
O2, U1, O2, U1, O1, U1, O2, U2, O2,
U2, O2, U1.
- Row 6—Pl.W. (O1, U1) 12 St., O2, U1, O3, U1,
O2, U1, O1, Pl.W. 12 St.
- Row 7—Pl.W. (O1, U1) 10 St., O2, U1, O2, U1,
O1, U1, O2, U1, O2, Pl.W. 10 St.
- Row 8—Pl.W. (O1, U1) 8 St., O2, U1, O2, U1,
O2, U1, O2, U1, O2, U1, O2, Pl.W. 8 St.
- Row 9—Same as Row 8.
- Row 10—Same as Row 7.
- Row 11—Same as Row 6, etc.
- Row 17—O2, U2, O2, U2, O2, Pl.W. 13 St.,
O2, U2, O2, U2, O2.
- Row 18—U2, O2, U2, O2, U3, Pl.W. 11 St.,
U3, O2, U2, O2, U2.
- Row 19—Same as Row 17.
- Row 20—Same as Row 18.
- Row 21—O2, U2, O2, U2, O2, U1, O1, U1,
O1, U1, O3, U1, O1, U1, O1, U1,
O2, U2, O2, U2, O2.
- Row 22—Pl.W. (U1, O1) 13 St., O2, U1,
O1, U1, O2, Pl.W. 13 St.



- Row 23—Pl.W. (U1, O1) 11 St., O2, U1,
O2, U1, O2, U1, O2, Pl.W. 11 St.
- Row 24—Pl.W. (U1, O1) 9 St., O2, U1, O2,
U1, O3, U1, O2, U1, O2, Pl.W.
9 St.
- Row 25—Pl.W. (U1, O1) 7 St., O2, U1,
O2, U1, O2, U1, O1, U1, O2, U1,
O2, U1, O2, Pl.W. 7 St.
- Row 26—Same as Row 24.
- Row 27—Same as Row 23.
- Row 28—Same as Row 22, etc.



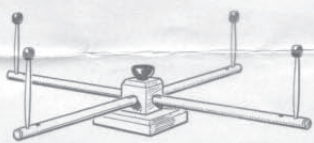
THE MOST PRACTICAL AND POPULAR HAND WEAVING LOOM



Three sizes to choose from:
Two Inch Junior Loom Four Inch with Adjustable Bar
Four Inches by Eight Inches with Adjustable Bar

There is no end to the many original and beautiful novelty designs and patterns that may be made with Jiffy Looms.

HOLLYWOOD YARN REEL



This new, practical Hollywood Yarn Reel shown above does the trick. It holds the yarn securely . . . conveniently! It is quickly adjustable to any size skein of yarn. It has a positive "free" action which means no "gumming up" . . . no tangled skeins . . . no work interruptions. Instantly collapsible . . . easily carried. Model shown above, No. 1500, handles 2 or more skeins of yarn at a time. Strong all-wood construction.

At All Dealers



THE HOME OF JIFFY LOOM PRODUCTS

536 Commercial Street Factory Glendale, California

Copyright, 1937, By Calcraft Corporation

