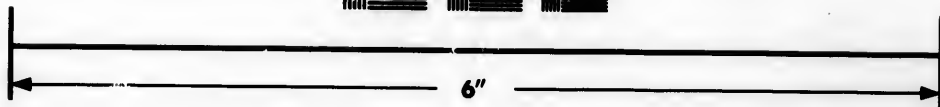
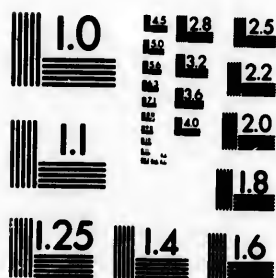


IMAGE EVALUATION TEST TARGET (MT-3)



Photographic
Sciences
Corporation

23 WEST MAIN STREET
WEBSTER, N.Y. 14580
(716) 872-4503

**CIHM/ICMH
Microfiche
Series.**

**CIHM/ICMH
Collection de
microfiches.**



Canadian Institute for Historical Microreproductions / Institut canadien de microreproductions historiques

© 1983

Technical and Bibliographic Notes/Notes techniques et bibliographiques

The Institute has attempted to obtain the best original copy available for filming. Features of this copy which may be bibliographically unique, which may alter any of the images in the reproduction, or which may significantly change the usual method of filming, are checked below.

L'Institut a microfilmé le meilleur exemplaire qu'il lui a été possible de se procurer. Les détails de cet exemplaire qui sont peut-être uniques du point de vue bibliographique, qui peuvent modifier une image reproduite, ou qui peuvent exiger une modification dans la méthode normale de filmage sont indiqués ci-dessous.

- ☐ Coloured covers/
Couverture de couleur
- ☐ Covers damaged/
Couverture endommagée
- ☐ Covers restored and/or laminated/
Couverture restaurée et/ou pelliculée
- ☐ Cover title missing/
Le titre de couverture manque
- ☐ Coloured maps/
Cartes géographiques en couleur
- ☐ Coloured ink (i.e. other than blue or black)/
Encre de couleur (i.e. autre que bleue ou noire)
- ☐ Coloured plates and/or illustrations/
Planches et/ou illustrations en couleur
- ☒ Bound with other material/
Relié avec d'autres documents
- ☐ Tight binding may cause shadows or distortion along interior margin/
La reliure serrée peut causer de l'ombre ou de la distortion le long de la marge intérieure
- ☐ Blank leaves added during restoration may appear within the text. Whenever possible, these have been omitted from filming/
Il se peut que certaines pages blanches ajoutées lors d'une restauration apparaissent dans le texte, mais, lorsque cela était possible, ces pages n'ont pas été filmées.
- ☐ Additional comments:/
Commentaires supplémentaires:

- ☐ Coloured pages/
Pages de couleur
- ☐ Pages damaged/
Pages endommagées
- ☐ Pages restored and/or laminated/
Pages restaurées et/ou pelliculées
- ☒ Pages discoloured, stained or foxed/
Pages décolorées, tachetées ou piquées
- ☐ Pages detached/
Pages détachées
- ☒ Showthrough/
Transparence
- ☐ Quality of print varies/
Qualité inégale de l'impression
- ☐ Includes supplementary material/
Comprend du matériel supplémentaire
- ☐ Only edition available/
Seule édition disponible
- ☐ Pages wholly or partially obscured by errata slips, tissues, etc., have been refilmed to ensure the best possible image/
Les pages totalement ou partiellement obscurcies par un feuillet d'errata, une pelure, etc., ont été filmées à nouveau de façon à obtenir la meilleure image possible.

This item is filmed at the reduction ratio checked below/
Ce document est filmé au taux de réduction indiqué ci-dessous.

10X	14X	18X	22X	26X	30X
<input type="checkbox"/>	<input type="checkbox"/>	<input checked="" type="checkbox"/>	<input type="checkbox"/>	<input type="checkbox"/>	<input type="checkbox"/>
12X	16X	20X	24X	28X	32X

The copy filmed here has been reproduced thanks to the generosity of:

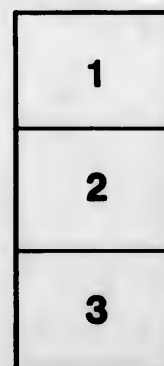
Library of the Public
Archives of Canada

The images appearing here are the best quality possible considering the condition and legibility of the original copy and in keeping with the filming contract specifications.

Original copies in printed paper covers are filmed beginning with the front cover and ending on the last page with a printed or illustrated impression, or the back cover when appropriate. All other original copies are filmed beginning on the first page with a printed or illustrated impression, and ending on the last page with a printed or illustrated impression.

The last recorded frame on each microfiche shall contain the symbol ➡ (meaning "CONTINUED"), or the symbol ▼ (meaning "END"), whichever applies.

Maps, plates, charts, etc., may be filmed at different reduction ratios. Those too large to be entirely included in one exposure are filmed beginning in the upper left hand corner, left to right and top to bottom, as many frames as required. The following diagrams illustrate the method:



L'exemplaire filmé fut reproduit grâce à la générosité de:

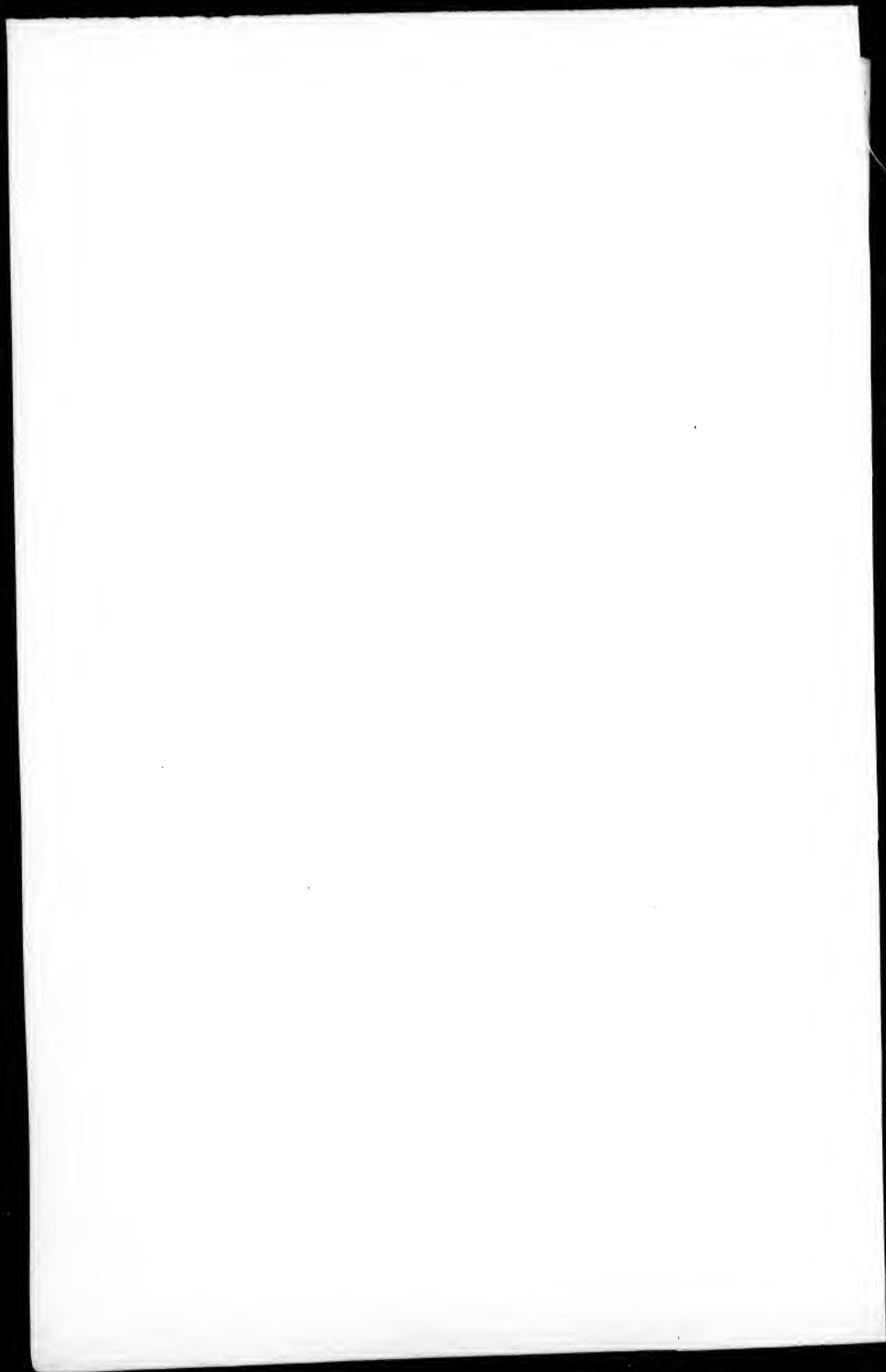
La bibliothèque des Archives
publiques du Canada

Les images suivantes ont été reproduites avec le plus grand soin, compte tenu de la condition et de la netteté de l'exemplaire filmé, et en conformité avec les conditions du contrat de filmage.

Les exemplaires originaux dont la couverture en papier est imprimée sont filmés en commençant par le premier plat et en terminant soit par la dernière page qui comporte une empreinte d'impression ou d'illustration, soit par le second plat, selon le cas. Tous les autres exemplaires originaux sont filmés en commençant par la première page qui comporte une empreinte d'impression ou d'illustration et en terminant par la dernière page qui comporte une telle empreinte.

Un des symboles suivants apparaîtra sur la dernière image de chaque microfiche, selon le cas: le symbole ➡ signifie "A SUIVRE", le symbole ▼ signifie "FIN".

Les cartes, planches, tableaux, etc., peuvent être filmés à des taux de réduction différents. Lorsque le document est trop grand pour être reproduit en un seul cliché, il est filmé à partir de l'angle supérieur gauche, de gauche à droite, et de haut en bas, en prenant le nombre d'images nécessaire. Les diagrammes suivants illustrent la méthode.



THE
NEW-BRUNSWICK
ALMANACK,
FOR THE YEAR OF OUR LORD
1835:

Being the Fifth of the Reign of His Most Gracious Majesty
WILLIAM IV.

And the Third after Bissextile, or Leap Year.

CALCULATED FOR THE MERIDIAN OF

SAINT JOHN,

But will serve for any other part of the Province.

—CONTAINING—

The usual Astronomical Calculations,—List of Provincial
Officers,—Sittings of the different Courts,—Office-
Bearers of various Literary, Commercial,
Charitable, and other Institutions,

With instructive and amusing Miscellaneous articles;

AND A CORRECTED LIST OF THE

MILITIA OFFICERS

WITHIN THE PROVINCE.



SAINT JOHN:

PRINTED BY HENRY CHUBB, AND SOLD AT THE
COURIER OFFICE, MARKET-SQUARE.

Eclipses, &c. in the Year 1835.

There will be three Eclipses this year, two of the Sun, and one of the Moon, as follows:

I. The first will be of the Sun, on Wednesday, May 27th, at 8h. 45m. morning; yet, by reason of the moon's south latitude it will not be visible in North America; but in South America, the Atlantic Ocean, and Africa, it will be visible, central, and annular.

II. The second will be of the Moon, on Wednesday, June 10th, at 5h. 43m. afternoon; and as the Moon will then be below the horizon, it will of course be invisible; but it will be so very small, that it would hardly be perceptible were it to happen when the Moon is above the horizon.

III. The third will be of the Sun, on Friday, November 20th, at 5h. 53m. morning, invisible; and it would also be invisible, on account of the moon's south latitude, were it to happen after sunrise.

Besides the Eclipses, there will be another interesting phenomenon on the 7th of November, this year, viz:—*the Transit of the Planet Mercury*, or the passage of the Planet across the Sun's disc. This event will take place on the afternoon of the 7th, and be mostly visible. Its phases will be as follow:

Beginning, or first contact of limbs,	1h 5m	} Apparent Time.
Least distance of centres and middle of the transit,	3 38	
Sun's centre sets,	4 58	
End, or last contact of limbs,	6 18	

At the middle, Mercury will be within 5' 35" of the sun's centre; and will appear like a small, black, round spot, of about the size of a rifle bullet, on the face of the sun. The ingress will be visible from the western extremity of Africa, and the whole continent of America: the egress from the western half of North America, the western coast of South America, New Holland, and the north eastern part of Asia.

This year will also be remarkable for the return of the great Comet of 1769, commonly designated as: "Halley's Comet," from its having been successfully predicted by that celebrated astronomer. If the calculations of our most eminent mathematicians may be relied on, it will come into the vicinity of the earth's orbit early in July, and cross the plane of the ecliptic about the beginning of August, in or near the middle of the sign Gemini; moving among the fixed stars from the west to the east, and north, through the constellations Taurus, Auriga, and the Lynx, into Ursa Major, or the Great Bear: it will not, however, probably be visible until it arrives in the constellation Auriga, about the first of September, when it will rise in the N. E. at about eleven o'clock in the evening, and pass the meridian, near the zenith, at a little past seven the next morning. On the last of September, it will be about 20 deg. due north of the stars Castor and Pollux, and will rise in the N. N. E. at about ten in the evening, and pass the meridian, a little north of the zenith, about eight the next morning; its apparent motion through the constellations about this time being incredibly swift. At about the beginning of October, when it arrives at Ursa Major, it will

and one of the

27th, at 8h.
it will not be
Atlantic Ocean,

June 10th, at
the horizon,
that it would
is above the

20th, at 5h.
on account of

phenomenon
of the Planet
's disc. This
mostly visible.

} Apparent
Time.

sun's centre;
the size of a
visible from the
America: the
western coast of
of Asia.

the great Comet
from its having
If the calcula-
ed on, it will
and cross the
near the mid-
om the west to
uriga, and the
however, pro-
ga, about the
eleven o'clock
at a little past
ill be about 20
ll rise in the
idian, a little
apparent motion
bly swift. At
Major, it will

have attained so great northern declination, that it will revolve without setting for several days, but will probably be lost for a few hours near the horizon, in the humidity of the earth's atmosphere. From Uran Major it will pass rapidly into the constellation Bootes, thence through the head of the Serpent into the Serpent-Bearer; but it will now (near the last of October,) have arrived so near the sun as probably to be lost in his rays, except it may possibly be visible for a little time early in the morning, near the horizon in the east, or a little south of east. It will reach its perihelion about the 4th of November, and be invisible during the remainder of the year: but on its return from its perihelion in 1836, it will probably be visible early in the morning in the south-east, for a few weeks, about the last of January and the first of February; but it will soon after reach such a distance from the earth that the attenuated light of the sun, which it reflects, will cease to make an impression on the organ of sight, and it will be no more visible until the year 1912, as its period is computed to be not less than 76 years; so that probably not one that has now arrived at the age of manhood, will live to witness the return of this illustrious visitor. Since its last appearance, successive generations have arisen, and passed away, and more than two hundred millions of the human family have joined the innumerable company of the mighty DEAD.

There will likewise this year be several remarkable conjunctions of some of the larger fixed stars, and the planets, with the moon; several of which will be occultations. The most interesting will be of Jupiter, on the 6th of February, at about ten o'clock in the evening, and on the 3d of April, about two in the morning; and of Saturn on the 12th of April, at about nine in the evening.

ORIENTAL AND OCCIDENTAL STARS.

The planet VENUS will be *Morning Star* till October 4th, thence *Evening Star*.

JUPITER will be *Evening Star* till June 15th; thence *Morning Star* to the end of the year.

MARS will be *Evening Star* after the 2d of January, till December 19th; thence *Morning Star*.

SATURN will be *Morning Star* till April 10th; thence *Evening Star* till October 19th; and then again *Morning Star*.

THE PLANETS.

☉ The Sun.	♂ Mars.
☾ The Moon.	♃ Jupiter.
☿ Mercury. ♀ Venus.	♄ Saturn.
♁ The Earth.	♁ Herschell.

ASPECTS AND NODES.

♌ Conjunction.	Vc Quincunx, 120 degrees.
* Sextile, 60 degrees.	♌ Opposition, 180 degrees.
□ Quartile, 90 degrees.	♌ Ascending Node.
△ Trine, 120 degrees.	♌ Descending Node.

SIGNS OF THE ZODIAC.

♈ Aries,	<i>Ram,</i>	head.	♎ Libra,	<i>Balance,</i>	reins.
♉ Taurus,	<i>Bull,</i>	neck.	♏ Scorpio,	<i>Scorpion,</i>	secrets.
♊ Gemini,	<i>Twins,</i>	arms.	♐ Sagittarius,	<i>Archer,</i>	thighs.
♋ Cancer,	<i>Crab,</i>	breast.	♑ Capricornus,	<i>Goat,</i>	knees.
♌ Leo,	<i>Lion,</i>	heart.	♒ Acquarius,	<i>Waterman,</i>	legs.
♍ Virgo,	<i>Virgin,</i>	belly.	♓ Pisces,	<i>Fishes,</i>	feet.

COMMON NOTES FOR 1835.

Dominical Letter,	D	Roman Indiction,	8
Golden Number,	12	Julian Period,	6548
Epact,	1	Dionysian Period,	164
Solar Cycle,	24	No. of Direction,	29

CARDINAL POINTS.

Vernal Equinox,	March 21st,	2h. 44m. A. M.
Summer Solstice,	June 21st,	11h. 53m. P. M.
Autumnal Equinox,	Sept. 22d,	1h. 52m. P. M.
Winter Solstice,	Dec. 22d,	7h. 14m. A. M.

MOVEABLE FESTIVALS OF THE CHURCH.

Septuagesima Sunday,	Feb'y 15	Easter Sunday,	April 19
Sexagesima Sunday,	Feb'y 22	Low Sunday,	April 26
Quinquagesima, or }	March 1	Rogation Sunday,	May 24
Shrove Sunday, }		Ascension Day, or }	May 28
Ash Wednesday—first }	March 4	Holy Thursday, }	
day of Lent, }		Whit-Sunday, or }	June 7
Quadragesima Sunday,	March 8	Pentecost, }	
Mid-Lent Sunday,	March 29	Trinity Sunday,	June 14
Palm Sunday,	April 12	Advent Sunday,	Nov. 29

EMBER DAYS.

March 11th, 13th, and 14th.	September 16th, 18th, and 19th.
June 10th, 12th, and 13th.	December 16th, 18th, and 19th.

HOLIDAYS AT THE PUBLIC OFFICES.

By Order of His Excellency.

January 1, New-Year's Day.	Sept. 29, Michaelmas.
Febr'y 24, Queen's birth-day kept.	Nov 30, St. Andrew.
March 17, St. Patrick.	Dec. 25, Christmas Day.
April 23, St. George.	" 26, } Christmas Holidays.
May 28, King's birth-day kept.	" 27, }
June 24, Saint John.	Ash Wednesday. Good Friday.
June 26, King's Accession.	Easter Monday. Easter Tuesday.
Sept. 7, King's Coronation.	

If any Holiday happens on a Sunday, it will be kept the next day.

SIGNALS

*Made at Partridge Island, and repeated at the Tower in Castle-
ton, on the approach of Vessels to the Harbour of St. John.*

- One Ball close, for one square rigged vessel,
- One Ball half hoisted, for two ditto,
- Two Balls close, for three ditto,
- Two Balls separated, for four ditto,
- A Pendant of any colour, for five ditto,
- A ditto under a Ball, for six ditto,
- A ditto over a Ball half hoisted, for seven ditto,
- A ditto under two Balls close, for eight ditto,
- A ditto between two Balls separate, for nine do.,
- A Flag of any colour, for ten or more ditto,

[The above are hoisted at the East or West yard arm, according to the quarter the vessels first appear in, and when their rig can be made out, the following descriptive colours will be hoisted at the mast head :]

- An Union Jack for a Flag Ship, with or without a squadron.
- Ditto with a red pendant over, for a two decker.
- Ditto with a blue pendant over, for a Frigate.
- Ditto with a white ditto, for a small armed vessel.

A blue Pendant, for a merchant ship.

A red ditto, for a merchant brig.

A white and blue ditto, for a Foreign vessel.

A white ditto, for a topsail schooner or sloop.

A flag blue and white horizontally, a neutral fleet.

A pendant white and blue, a neutral man of war.

A blue flag, a neutral merchant ship.

A flag, red, white, and blue, an enemy's fleet.

A pendant, red, white, and blue, an enemy's man-of-war.

An Union Jack over neutral or enemy's signals, the vessel is detained, or a prize.

A white flag over any signal, the vessel bears a flag of truce.

A red flag pierced white, for a Steam-Boat from Digby.

A blue flag pierced white, for a Steam-Boat from St. Andrews, and Eastport.

A Ball at the mast head, vessel is on shore or in distress.—

☛ Should immediate aid be necessary, guns to be fired.

In thick weather, a gun will be fired at Partridge Island, in answer to each gun heard at sea.—When a vessel requires a Pilot, her descriptive pendant will be shown at a yard arm, instead of a Ball.

TIME FOR GOING THROUGH THE FALLS.

The Falls are level (or still water) at about 3½ hours on the *flood*, and at about two and a half on the *ebb*, which makes them passable four times in 24 hours, about ten or fifteen minutes each time.—No other rule can be given, as much depends on the floods in the river St. John, and the time of high water or full sea, which is often hastened by high winds, and in proportion to the height of them.

GEOGRAPHICAL POSITION OF HEADLANDS, &c.
ON THE COAST OF NORTH AMERICA,
Determined on the spot by Astronomical Observations.

PLACE OF OBSERVATION.	LATITUDE			Longitude		
	North.			West of Greenwich		
Saint John, N. B.	45	15	0	66	6	19
Partridge Island Light House, ...	45	13	36			
Beaver Harbour, South West } Point of the entrance, }	...	45	3 12	66	47	29
Navy Island, South East Point, ...	45	2	24	67	5	47
Bliss' Island, South West Point, } L'Etang Harbour, }	...	45	0 15	66	54	27
Head Harbour Light H., Campo Bello, ...	44	56	50	66	56	59
Grand Manan, North Point, ...	44	46	49	66	49	7
Ditto, Swallow-tail Point, ...	44	44	54	66	47	21
Ditto, White-Head Island, ...	44	36	59	66	45	4
Brier's Island Light House, ...	44	13	51	66	26	54
Digby Light House, ...	44	40	25	65	50	15
HALIFAX, Naval Yard, (Meridian) ...	44	39	26	63	37	48
Green Island, Country Harbor, S. Point, ...	45	4	55	61	34	49
Canso Light House, ...	45	19	33	60	58	30
Eddy Point, Gut of Canso, ...	45	30	25	61	16	54
Pictou Island, South side, ...	45	47	52	62	37	33
Pictou Harbour, ...	45	41	56	62	42	0
Liverpool Light House, ...	44	1	52	64	40	49
Western Head, Liverpool Bay, ...	43	59	13	64	42	34
Long projecting Point between Rugged Island Harbour and Green Harbour, ...	43	39	40	65	11	28
Shelburne Light House, ...	43	37	31	65	18	40
Sandy Point, Shelburne Harbour, ...	43	41	57	65	22	11
Cape Sable, South Point, ...	43	23	57	65	38	3
South Seal Island, South Point, ...	43	23	51	65	59	42
Ditto, North Point, ...	43	26	22	66	1	38
Sable Island, East end, ...	43	59	15	59	48	17
Ditto, West end, ...	43	56	30	60	13	34
Louisburg, Ruins of the old Light-house, ...	45	53	31	59	59	48
Cape Breton, extreme Point, ...	45	56	26	59	50	15
City of Quebec, ...	46	48	30	71	16	25
Saint Paul's Island, ...	47	12	38	60	11	24
Cape Gaspe, South East Point, ...	48	45	14	64	13	38
Anticosti, West Point, ...	49	52	29	64	36	54
Magdalen Island, North East Point, ...	47	37	37	61	26	51
Prince Edward Island, West Point, ...	46	37	43	64	24	21
Saint John's, (N. F.) Fort Townshend, ...	47	33	33	52	45	10
Dock Yard, Bermuda, ...	32	19	1	64	54	18

ations.

Longitude
West of
Greenwich

0 66 6 19

66

2 66 47 23

4 67 5 47

5 66 54 27

6 66 56 58

9 66 49 7

4 66 47 21

9 66 45 4

1 66 26 54

5 65 50 15

26 63 37 43

55 61 34 49

33 60 58 30

25 61 16 54

52 62 37 33

56 62 42 0

52 64 40 49

13 64 42 34

40 65 11 28

31 65 18 40

57 65 22 11

57 65 38 3

51 65 59 42

22 66 1 38

15 59 48 17

30 60 13 34

31 59 59 43

26 59 50 15

30 71 16 25

38 60 11 24

14 64 13 38

29 64 36 54

37 61 26 51

48 64 24 21

33 52 45 10

1 64 54 18

* * Once more the watch on Heaven's eternal towers,
Has cried the year, and registered its hours,—
And once again, where centuries have died,
Springs fresh to life the New-Year's morning pride:
A NEW-YEAR'S MORN! the choicest hour of time—
Unstained as yet by deeds of hoary crime!

MOON'S PHASES.

First Quarter 6th, 4h 56m noon. Last Quarter 21st, 4h 12m noon.
Full Moon 14th, 4h 32m noon. New Moon 28th, 4h 27m noon.

D.	D.	CALENDAR, &c.	R. & S.	Sun's	R.	High
M.	W.		h. m. h.	dec. S & d. m.	S. S. h. m.	water h. m.
1	Th	Circumcision. Irish U.	7 38	5 23 3	7 12	legs 0 53
2	Fri	<i>Looks</i> [nion, 1801.	7 38	5 22 58	8 18	legs 1 34
3	Sat	<i>like snow.</i>	7 37	5 22 53	9 22	feet 2 17
4	SU	2d Sun after Christmas	7 37	5 22 47	10 25	feet 3 0
5	Mo	<i>Clear and</i>	7 36	5 22 40	11 26	feet 3 41
6	Tu	Epiphany. <i>seasonable</i>	7 35	5 22 33	Morn	head 4 26
7	We	☾ apogee Low tides	7 35	5 22 26	0 26	head 5 11
8	Th	Lucian. <i>weather.</i>	7 34	5 22 18	1 26	neck 6 2
9	Fri	Aldebran or Bull's Eye	7 33	5 22 10	2 27	neck 7 1
10	Sat	<i>Nipping.</i> [so. 9h	7 32	5 22 2	3 29	neck 8 6
11	SU	1st Sun after Epiph.	7 31	5 21 53	4 32	arm 9 12
12	Mo	<i>A change</i>	7 30	5 21 43	5 33	arm 10 5
13	Tu	Hiliary.	7 29	5 21 33	Rises	bre. 10 51
14	We	Venus in Perihelion.	7 28	5 21 23	4 36	bre. 11 32
15	Th	<i>may be expected.</i>	7 28	5 21 12	5 44	hart. Morn
16	Fri	Bat. of Corunna, 1809.	7 27	5 21 1	6 55	hart. 0 10
17	Sat	Franklin born, 1706.	7 26	5 20 50	8 7	belly 0 53
18	SU	2d Sun af Ep. St Prisca	7 25	5 20 38	9 20	belly 1 35
19	Mo	<i>Perhaps snow</i>	7 24	5 20 25	10 33	belly 2 21
20	Tu	Fabian. [93	7 23	5 20 13	11 46	rein. 3 8
21	We	Agnes. Louis xvi. beh.	7 22	5 20 0	Morn	rein. 3 51
22	Th	Vincent. Byron b. '38.	7 21	5 19 46	1 0	seer. 4 39
23	Fri	Pitt d. 1806. Low tides	7 20	5 19 33	2 14	seer. 5 29
24	Sat	Sirius south 10h 20m	7 19	5 19 18	3 28	thi. 6 40
25	SU	3d Sun af Eph. Conv.	7 18	5 19 4	4 40	thi. 8 3
26	Mo	<i>or rain.</i> [St. Paul.	7 17	5 18 49	5 47	knee 9 21
27	Tu	D. Sussex born '73.	7 16	5 18 34	Sets.	knee 10 24
28	We	Peter the Gt. d. 1725.	7 14	5 18 18	4 48	legs 11 15
29	Th	George III. died, 1820	7 13	5 18 2	5 57	legs 0 1
30	Fri	Charles I. beh. High	7 12	5 17 46	7 5	legs 0 40
31	Sat	<i>Cold.</i> tides.	7 11	5 17 30	8 10	feet 1 18

Walk now amongst the forest trees,
Saidst thou that they were stript and bare ?
Each heavy bow is bending down
With snowy leaves and flowers—the crown
Which Winter regally doth wear.

"Pray, sir," said a young Chinese, learning English, to his tutor, "am I *raw* when my clothes are off?" "Not unless you have rubbed your skin off—tell me why you ask?" He opened a Dictionary, and pointed to *Raw, Undressed*.

MOON'S PHASES.

First Quarter 5th, 2h 51m noon.

Last Quarter 20th, 0h 8m morning.

Full Moon 18th, 6h 15m morning.

New Moon 27th, 7h 44m morning.

D. M.	D. W.	CALENDAR, &c.	☉ R. & S. h. m. h.	SUN'S dec. S & S. d. m. h.	● R. h. m.	○ Plac.	High water h. m.
1	SU	4th Sun af Epiphany.	7 9 5	17 13	9 11	feet	1 55
2	Mo	Pur. B. V. Mary. Can-	7 8 5	16 56	10 12	head	2 30
3	Tu	St. Blas. [dlemas.	7 7 5	16 39	11 13	head	3 4
4	We	☽ apogee <i>Falling</i>	7 6 5	16 21	Morn	neck	3 37
5	Th	Agatha. <i>weather.</i>	7 4 5	16 3	0 14	neck	4 15
6	Fri	Dr. Priestley d. 1804.	7 3 5	15 44	1 16	neck	4 53
7	Sat	Low tides. <i>Changeable.</i>	7 2 5	15 26	2 18	arms	5 44
8	SU	5th Sun af Epiphany.	7 1 5	15 7	3 20	arms	6 57
9	Mo	Mars stationary.	6 59	6 14 48	4 20	breast	8 19
10	Tu	<i>Stormy.</i>	6 57	6 14 29	5 17	krest	9 34
11	We	Rigel south 7h 30m	6 56	6 14 9	Rises.	breast	10 28
12	Th	<i>Fine winter</i>	6 54	6 13 49	4 36	hart.	11 15
13	Fri	<i>weather</i>	6 53	6 13 29	5 50	hart.	Morn.
14	Sat	Valentine.	6 52	6 13 9	7 5	belly	0 0
15	SU	Septuagesima Sunday.	6 50	6 12 49	8 20	belly	0 39
16	Mo	Moon perigee.	6 49	6 12 28	9 35	reins	1 20
17	Tu	Trea. Ghent rat. 1817.	6 48	6 12 7	10 50	reins	2 3
18	We	M. Luther d. 1546.	6 46	6 11 46	Morn	seccr.	2 41
19	Th	<i>Cold</i>	6 45	6 11 25	0 5	seccr.	3 23
20	Fri	Low tides.	6 43	6 11 4	1 20	thi.	4 9
21	Sat	<i>about this time.</i>	6 42	6 10 42	2 32	thi.	5 0
22	SU	Sexagesima Sunday.	6 40	6 10 20	3 33	knee	6 11
23	Mo	Lindley Murray d. '26.	6 39	6 9 59	4 38	knee	7 45
24	Tu	Matthias. D. Camb. b.	6 37	6 9 37	5 29	knee	9 12
25	We	Earl of Essex beheaded	6 36	6 9 14	6 9	legs	10 19
26	Th	Bona. left Elba, '15.	6 34	6 8 52	Sets,	legs	11 7
27	Fri	Y'd L. sets 0h 39m	6 32	6 8 30	5 56	feet	11 49
28	Sat	<i>Pleasant.</i>	6 30	6 8 7	6 59	feet	0 25

1835.

3d Month.

MARCH.

1835.

The little brooks run on in light,
 As if they had a chance of mirth;
 The skies are blue, the air is warm,
 Our very hearts have caught the charm
 That shods a beauty over earth.

Corrupt company is more infectious than corrupt air.

MOON'S PHASES.

First Quarter 7th, 11h 28m morn. Last Quarter 21st, 8h 42m morn.
 Full Moon 14th, 5h 23m noon. New Moon 28th, 11h 58m noon.

D. M.		D. W.	CALENDAR, &c.	☉ R. & S. h. m. h.	☽ Sun's dec. d. m.	☾ R. & S. h. m.	☾ sets h. m.	☾ Plac.	High water h. m.
1	SU	Shrove Sund. St. Da-	6 29 6	7 44	8 2	head	0 58		
2	Mo	J. Wesley d. '91. [vid.	6 27 6	7 21	9 3	head	1 29		
3	Tu	Shrove Tuesday.	6 26 6	6 59	10 3	head	2 0		
4	We	Ash Wednesday. <i>Fine.</i>	6 25 6	6 36	11 4	neck	2 31		
5	Th	<i>March weather.</i>	6 24 6	6 12	Morn	neck	2 57		
6	Fri	[mood died, 1910.	6 22 6	5 49	0 5	arms	3 28		
7	Sat	Perpetun. Ld Colling-	6 21 6	5 26	1 6	arms	4 9		
8	SU	1st Sunday in Lent.	6 19 6	5 3	2 7	arms	4 55		
9	Mo	Low tides. <i>A rain</i>	6 18 6	4 39	3 5	breast	6 9		
10	Tu	Bat. of Aboukir, 1701.	6 16 6	4 16	3 58	breast	7 41		
11	We	<i>storm may be</i>	6 14 6	3 52	4 43	hart	9 2		
12	Th	Grego. Mar.	6 13 6	3 29	5 23	hart	10 1		
13	Fri	<i>expected</i>	6 11 6	3 5	Rises.	belly	10 53		
14	Sat	Sirius sets, midnight.	6 10 6	2 42	5 56	belly	11 38		
15	SU	2d Sunday in Lent.	6 8 6	2 18	7 13	reins	Morn		
16	Mo	Moon per. High tides.	6 7 6	1 54	8 31	reins	0 20		
17	Tu	St. Patrick. <i>about</i>	6 5 6	1 31	9 50	seer.	1 2		
18	We	<i>this time.</i>	6 3 6	1 7	11 7	seer.	1 43		
19	Th		6 2 6	0 43	Morn	thi.	2 20		
20	Fri	Bona. ret. to Paris, '15	6 0 6	0 20	0 23	thi.	2 59		
21	Sat	Cranmer burnt 1556.	5 59 7	N. 4	1 34	thi.	3 46		
22	SU	3d Sun in Lent. Sir I.	5 57 7	0 28	2 35	knee	4 45		
23	Mo	[Newton d. 1797.	5 55 7	0 51	3 28	knee	6 1		
24	Tu	Low tides. <i>High winds</i>	5 54 7	1 15	4 11	legs	7 32		
25	We	<i>and blustering</i>	5 52 7	1 39	4 46	legs	9 3		
26	Th	Annun. B. V. Mary—	5 51 7	2 2	5 15	feet	10 8		
27	Fri	[Lady day.	5 49 7	2 26	5 40	feet	10 53		
28	Sat	<i>weather.</i>	5 48 7	2 49	Sets.	feet	11 29		
29	SU	4th Sun in Lent.—Mid	5 46 7	3 13	6 52	head	0 4		
30	Mo	[Lent Sun.	5 45 7	3 36	7 53	head	0 35		
31	Tu	Moon in apogee.	5 43 7	3 59	8 54	neck	1 1		

9

By nature charmed, I softly touch the string—
Of April, and of April's queen, I sing;
Oh! who would not on nature's beauties dwell?
And seek her in her most sequestered cell?
The clouds dispersing now, the sky serene,
And Spring resumes her robe of purest green;
Now Flora's train they timidly peep forth,
And zephyr soft succeeds the stormy north.

MOON'S PHASES.

First Quarter 6th, 4h 47m morn.

Last Quarter 19th, 6h 29m noon.

Full Moon 13th, 2h 32m morning.

New Moon 27th, 4h 36m noon.

D. M.	D. W.	CALENDAR, &c.	☾ R. & S. h. m. h.	☼ SUN'S dec. N d. m.	☉ R. & sets h. m.	☉ Plac.	High water h. m.
1	We	☾ apogee. <i>Pleasant</i>	5 41 7	4 23	9 59	neck	1 29
2	Th	Bat. Copenhagen, 1801	5 40 7	4 46	10 59	neck	1 58
3	Fri	Bp. Heber died, 1826.	5 38 7	5 9	11 58	arms	2 27
4	Sat	St. Amb. Goldsmith d.	5 37 7	5 42	Morn	arms	2 55
5	SU	5th Sun in Lent. [1774.	5 36 7	5 55	0 56	breast	3 38
6	Mo	Bulls Eye sets 10. 25.	5 34 7	6 17	1 50	breast	4 25
7	Tu	<i>and fair.</i>	5 33 7	6 40	2 38	hart	5 39
8	We	Low tides.	5 32 7	7 2	3 19	hart	7 7
9	Th	Lord Bacon d. 1626.	5 30 7	7 25	3 54	belly	8 32
10	Fri	<i>April showers.</i>	5 29 7	7 47	4 25	belly	9 37
11	Sat	Canning born, 1770.	5 27 7	8 9	Rises.	belly	10 26
12	SU	6th Sun in Lent. Palm	5 25 7	8 31	6 2	reins	11 10
13	Mo	Moon perigee. [Sun.	5 23 7	8 53	7 23	reins	11 53
14	Tu	High tides. <i>Warm</i>	5 22 7	9 15	8 44	secr.	Morn
15	We	[peare born, 1564.	5 21 7	9 37	10 4	secr.	0 36
16	Th	Maundy Thurs. Shaks.	5 19 7	9 58	11 19	thi.	1 17
17	Fri	Good Friday. <i>sunshine.</i>	5 18 7	10 19	Morn	thi.	1 58
18	Sat	Byron died, 1824.	5 16 7	10 40	0 27	knee	2 41
19	SU	Easter Day. <i>Alphege.</i>	5 15 7	11 1	1 26	knee	3 32
20	Mo	Easter Monday. <i>Fine.</i>	5 14 7	11 22	2 13	legs	4 29
21	Tu	Easter Tuesday.	5 12 7	11 42	2 50	legs	5 45
22	We	<i>Changeable.</i>	5 11 7	12 3	3 21	feet	7 16
23	Th	St. George.	5 10 7	12 23	3 47	feet	8 40
24	Fri	Sirius sets 9h 50m	5 8 7	12 43	4 10	feet	9 41
25	Sat	St. Mark. [Low S.	5 7 7	13 3	4 30	head	10 27
26	SU	1st Sun. after Easter—	5 6 7	13 22	4 51	head	11 1
27	Mo	<i>Chill winds</i>	5 4 7	13 42	Sets.	neck	11 32
28	Tu	☾ apogee.	5 3 7	14 1	7 50	neck	0 1
29	We	High tides. <i>Clear</i>	5 1 7	14 20	8 50	neck	0 27
30	Th	<i>and pleasant.</i>	5 0 7	14 39	9 50	arms	0 54

I sha
I sha
I sha
I sha

Last Quar
New Moon

D. M.	D. W.	
1	Fri	S
2	Sat	A
3	SU	2c
4	Mo	
5	Tu	B
6	We	St
7	Th	
8	Fri	
9	Sat	Co
10	SU	3d
11	Mo	Pi
12	Tu	
13	We	
14	Th	H
15	Fri	
16	Sat	Ba
17	SU	4t
18	Mo	
19	Tu	D
20	We	Be
21	Th	
22	Fri	Po
23	Sat	Ba
24	SU	5t
25	Mo	C
26	Tu	At
27	We	Ve
28	Th	K
29	Fri	
30	Sat	Pe
31	SU	Su

THE VOICE OF SUMMER.

I shall come, I shall come, when the storms have passed by;
 I shall come when there's warmth in the brilliant blue sky;
 I shall come when the ice in the streams is all gone;
 I shall come when the robin sings gaily at dawn.

MOON'S PHASES.

Last Quarter 19th, 5h 55m morn.

First Quarter 5th, 5h 59m noon.

New Moon 27th, 8h 48m morning.

Full Moon 12th, 10h 29m morning.

29m noon.
 5m noon.

○ Plac.	High water h. m.	D. M.	D. W.	CALENDAR, &c.	☉ R. & S. h. m. h.	SUN's dec. N d. m.	○ R. & sets h. m.	○ Plac.	High water h. m.
1	29	Fri		St. Philip & St James.	4 58 8	14 57	10 49	arms	1 25
2	58	Sat		Athanasius. <i>Warm</i>	4 57 8	15 15	11 55	breast	1 58
3	27	SU		2d Sun. af Easter. Inv.	4 56 8	15 33	Morn	breast	2 34
4	55	Mo		[of the Cross.	4 55 8	15 50	0 34	breast	3 13
5	38	Tu		Bonaparte died, 1821.	4 54 8	16 8	1 16	hart	4 9
6	25	We		St. John Evan. <i>and</i>	4 53 8	16 25	1 53	hart	5 15
7	39	Th		<i>seasonable weather.</i>	4 51 8	16 42	2 25	belly	6 44
8	7	Fri		[diz, 1501.	4 50 8	16 58	2 53	belly	8 1
9	32	Sat		Columbus sailed fr. Ca-	4 49 8	17 14	3 20	reins	9 7
10	37	SU		3d Sunday after Easter	4 48 8	17 30	3 46	reins	9 54
11	26	Mo		Pitt died, 1778.	4 46 8	17 46	Rises.	secr.	10 41
12	10	Tu		<i>change</i>	4 45 8	18 1	7 33	secr.	11 26
13	53	We		<i>may be looked for.</i>	4 44 8	18 16	8 55	thi.	Morn
14	36	Th		High tides.	4 43 8	18 31	10 10	thi.	0 11
15	17	Fri		<i>Fine growing</i>	4 42 8	18 46	11 14	knee	0 57
16	58	Sat		Battle of Albuera, 1810	4 41 8	19 0	Morn	knee	1 43
17	41	SU		4th Sund. after Easter.	4 40 8	19 14	0 7	legs	2 29
18	32	Mo		<i>weather.</i>	4 39 8	19 27	0 49	legs	3 21
19	29	Tu		Dunstan.	4 38 8	19 40	1 23	legs	4 13
20	16	We		Bernardine. ♀ in perh.	4 37 8	19 53	1 51	feet	5 23
21	45	Th		<i>Not so fine.</i>	4 36 8	20 6	2 15	feet	6 43
22	40	Fri		Pope born, 1688.	4 35 8	20 18	2 36	head	7 57
23	27	Sat		Bat. of Ramillies, 1706.	4 34 8	20 30	3 57	head	9 2
24	10	SU		5th Sun. af. E. Rog. S.	4 33 8	20 41	3 18	head	9 43
25	27	Mo		Capo. <i>More pleasant.</i>	4 32 8	20 52	3 41	neck	10 23
26	1	Tu		Augustine.	4 31 8	21 3	Sets.	neck	10 56
27	32	We		Venerable Bede.	4 30 8	21 14	7 43	arms	11 29
28	0	Th		KING's b. d. kept. Asc.	4 29 8	21 24	8 44	arms	0 0
29	27	Fri		[Day—Holy Thurs.	4 29 8	21 33	9 41	arms	0 33
30	54	Sat		Peace in Eu. 1314.	4 28 8	21 43	10 32	breast	1 5
31		SU		Sunday after Ascen.	4 27 8	21 52	11 16	breast	1 42

I shall come, when the fields are all covered with green,
 When the swallow abroad on her pinions is seen;
 I shall come, when the roads are all level and dry;
 I shall come, when is whizzing the sun-loving fly.
 I shall come, I shall come, tho' I tarry so long;
 I shall come with a swell of melodious song;
 I shall come with the blossom, the tulip, and rose,
 When the zephyr, perfumed, along the earth blows.

MOON'S PHASES.

First Quarter 4th, 3h 21m morn.
 Full Moon 10th, 6h 1m afternoon.

Last Quarter 17th, 7h 22m noon.
 New Moon 25th, 11h 37m noon.

D. M.	D. W.	CALENDAR, &c.	☺ R. & S.	SUN'S dec. N	● R. & S.	○ Plac.	High water h. m.
			h. m.	h. d. m.	h. m.		
1	Mo	Nicomede. <i>Dry and</i>	4 27 8	22 0	11 54	hart.	2 22
2	Tu	<i>warm.</i>	4 26 8	22 8	Morn	hart.	3 5
3	We		4 25 8	22 16	0 26	hart.	3 59
4	Th	Reform Bill passed by	4 25 8	22 23	0 55	belly	5 1
5	Fri	[the Lords, 1832.	4 24 8	22 30	1 21	belly	6 11
6	Sat	[rec'd Royal assent.	4 24 8	22 37	1 46	reins	7 23
7	SU	Whit Sun. Reform Bill	4 23 8	22 43	2 12	reins	8 29
8	Mo	Whit Monday.	4 23 8	22 49	2 40	seer.	9 21
9	Tu	Whit Tuesday.	4 22 8	22 54	Rises.	seer.	10 12
10	We	<i>Fine growing</i>	4 22 8	22 59	7 43	thi.	11 6
11	Th	St. Barnabas.	4 21 8	23 4	8 53	thi.	Morn
12	Fri	High tides. <i>weather.</i>	4 21 8	23 8	9 55	knee	0 0
13	Sat	Virg. Mary died, Δ 40	4 21 8	23 12	10 43	knee	0 46
14	SU	Trinity Sunday. Bat.	4 21 8	23 15	11 22	legs	1 31
15	Mo	[of Marengo, 1800.	4 20 8	23 18	11 54	legs	2 17
16	Tu	<i>Very warm</i>	4 20 8	23 21	Morn	feet	3 8
17	We	St. Alban.	4 20 8	23 23	0 19	feet	3 59
18	Th	Bat. of Waterloo, 1815.	4 20 8	23 25	0 41	head	4 51
19	Fri	Magna Charta signed,	4 20 8	23 26	1 2	head	5 50
20	Sat	[1215.	4 20 8	23 27	1 23	head	6 53
21	SU	1st Sun. aft. Trin. Bat.	4 20 8	23 28	1 45	neck	7 56
22	Mo	[of Vittoria, 1815.	4 20 8	23 28	2 9	neck	8 53
23	Tu	<i>for the season.</i>	4 20 8	23 27	2 35	arms	9 41
24	We	Nat. of St. John Bap.	4 20 8	23 27	3 7	arms	10 22
25	Th		4 20 8	23 25	Sets.	arms	11 1
26	Fri	Geo. IV. died, 1830.	4 20 8	23 24	8 29	breast	11 40
27	Sat	Rev. Dr. Dodd hung.	4 20 8	23 22	9 16	breast	0 16
28	SU	2d S. after Trin. Wm.	4 21 8	23 20	9 56	hart.	0 52
29	Mo	St. Peter. [IV. procl.	4 21 8	23 17	10 30	hart.	1 30
30	Tu	<i>Changeable.</i>	4 21 8	23 14	10 59	hart.	2 12

First Qu
 Full Mo

D. M.	D. W.
1	We
2	Th
3	Fri
4	Sat
5	SU
6	Mo
7	Tu
8	We
9	Th
10	Fri
11	Sat
12	SU
13	Mo
14	Tu
15	We
16	Th
17	Fri
18	Sat
19	SU
20	Mo
21	Tu
22	We
23	Th
24	Fri
25	Sat
26	SU
27	Mo
28	Tu
29	We
30	Th
31	Fri

1835.

7th Month.

JULY.

1835.

I shall come, I shall come, over valley and hill;
 I shall show my green robes by river and rill;
 To meet me with gladness I charge you prepare;
 Awake ! for behold—I shall quickly be there !
 By warnings made ready, enjoy my short stay,
 For soon I will vanish, like sunbeams, away !

MOON'S PHASES.

First Quarter 3d, 9h 57m morning. | Last Quarter 10th, 11h 0m morn.
 Full Moon 10th, 1h 53m morning. | New Moon 25th, 0h 30m noon.

22m noon. r
 17m noon.

○ High
 lac. water
 h. m.

art. 2 22
 art. 3 5
 art. 3 59
 elly 5 1
 elly 6 11
 reins 7 23
 reins 8 29
 ecr. 9 21
 ecr. 10 12
 hi. 11 6
 hi. Morn
 knee 0 0
 knee 0 46
 legs 1 31
 legs 2 17
 feet 3 8
 feet 3 59
 head 4 51
 head 5 50
 head 6 53
 neck 7 56
 neck 8 53
 arms 9 41
 arms 10 22
 arms 11 1
 breast 11 40
 breast 0 16
 hart. 0 52
 hart. 1 30
 hart. 2 12

D. M.	D. W.	CALENDAR, &c.	☉ R. & S. h. m. h.	SUN'S dec. N d. m.	☿ R. & S. h. m.	○ Plac.	High water h. m.
1	We	Moon in apogee.	4 21 8	23 10	11 24	belly	2 57
2	Th	Visitat. of B. V. Mary.	4 22 8	23 6	11 48	belly	3 46
3	Fri	<i>Very fine.</i>	4 22 8	23 1	Morn	reins	4 38
4	Sat	Tran. St. Martin.	4 23 8	22 57	0 12	reins	5 35
5	SU	3d Sun af Trin. French	4 23 8	22 51	0 38	secr.	6 39
6	Mo	[took Algiers, 1830.	4 24 8	22 46	1 9	secr.	7 43
7	Tu	Sheridan died, 1816.	4 24 8	22 40	1 46	thi.	8 56
8	We	E. Burke died, 1797.	4 25 8	22 33	Rises.	thi.	10 0
9	Th	<i>Changeable</i>	4 25 8	22 27	7 39	knee	10 59
10	Fri	Calvin born, 1509.	4 26 8	22 19	8 34	knee	11 35
11	Sat	<i>with rain.</i>	4 26 8	22 12	9 18	legs	Morn
12	SU	4th Sunday after Trin.	4 27 8	22 4	9 52	legs	0 41
13	Mo	[gan.	4 28 8	21 55	10 19	feet	1 24
14	Tu	French rev. of 1789 be-	4 29 8	21 47	10 43	feet	2 6
15	We	Swithin. <i>Fine</i>	4 29 8	21 38	11 5	feet	2 49
16	Th	<i>and fair.</i>	4 30 8	21 28	11 26	head	3 30
17	Fri	Dr. Watts born, 1764.	4 31 8	21 18	11 48	head	4 12
18	Sat	Very low tides.	4 32 8	21 8	Morn	neck	4 51
19	SU	5th Sunday after Trin.	4 33 8	20 58	0 11	neck	5 37
20	Mo	Margaret. <i>Frequent</i>	4 34 8	20 47	0 36	neck	6 36
21	Tu	Burns died, 1796.	4 35 8	20 36	1 6	arms	7 44
22	We	Magdalene. [1706.	4 36 8	20 24	1 41	arms	8 55
23	Th	Union of Eng. & Scot.	4 37 8	20 12	2 25	breast	9 50
24	Fri	<i>changes.</i>	4 38 8	20 0	Sets.	breast	10 40
25	Sat	Rev. in France, 1830.	4 39 8	19 47	7 55	breast	11 23
26	SU	6th Sunday af Trinity.	4 40 8	19 34	8 32	hart.	0 2
27	Mo	High tides. <i>Settled</i>	4 41 8	19 21	9 2	hart.	0 42
28	Tu	<i>and warm.</i>	4 42 8	19 7	9 29	belly	1 21
29	We	Bat. of Talavera, 1809.	4 43 8	18 53	9 54	belly	2 2
30	Th	<i>Sultry.</i>	4 44 8	18 39	10 19	reins	2 44
31	Fri	<i>with showers.</i>	4 45 8	18 25	10 43	reins	3 23

B

13

AWAY to the greenwood—away with me
To the Summer tent of the Linden tree;
Where the glimmering beams of sunshine fall;
Like shaded lights in a monarch's hall;
And the elf-tuned harp of the breeze is heard,
With the thrilling note of the viewless bird;

MOON'S PHASES.

First Quarter 1st, 3h 6m afternoon.

New Moon 23d, 11h 38m noon.

Full Moon 8th, 10h 55m morning.

First Quarter 30th, 8h 9m noon.

Last Quarter 16th, 4h 31m morn.

D.	D. W.	CALENDAR, &c.	☺ R. & S. h. m. h.	SUN'S dec. N d. m.	● R. & S. h. m.	○ Plac.	High water h. m.
1	Sat	Lammas. Battle of the	4 46 8	13 10	11 12	sec.	4 7
2	SU	7th Sun af. Trin. [Nile.	4 47 8	17 55	11 43	sec.	4 52
3	Mo	Abd. of Chas. X. 1830.	4 49 8	17 39	Morn	thi.	5 56
4	Tu	Refreshing showers.	4 50 8	17 24	0 23	thi.	7 19
5	We	ζ gr. elongation W.	4 51 8	17 8	1 12	knee	8 45
6	Th	Transfig. of our Lord.	4 52 8	16 51	2 11	knee	9 57
7	Fri	Name of Jesus.	4 53 8	16 35	Rises.	knee	10 54
8	Sat	Geo Canning d. 1827.	4 55 8	16 18	7 47	legs	11 45
9	SU	8th S. aft Trin. Louis	4 56 8	16 1	8 18	legs	Morn
10	Mo	Phil. K. of France, 1830	4 57 8	15 44	8 44	feet	0 27
11	Tu	Very warm.	4 58 8	15 26	9 7	feet	1 9
12	We	Louis XVI. deth. 1792	4 59 8	15 8	9 28	head	1 44
13	Th	Q. Adelaide b. 1792.	5 1 7	14 50	9 50	head	2 19
14	Fri	Y'd L. rises 2h. [1769.	5 2 7	14 32	10 13	neck	2 51
15	Sat	Assumption. Bona. b	5 4 7	14 14	10 38	neck	3 25
16	SU	9th Sunday after Trin.	5 5 7	13 55	11 6	neck	4 0
17	Mo	Low tides. Thunder.	5 6 7	13 36	11 38	arms	4 37
18	Tu	[Spithead, 1782.	5 8 7	13 17	Morn	arms	5 31
19	We	Royal George sunk off	5 9 7	12 57	0 17	arms	6 48
20	Th	Bernard. Close and	5 10 7	12 38	1 6	breast	8 12
21	Fri	K.Wm IV. born, 1765.	5 12 7	12 18	2 7	breast	9 25
22	Sat	sultry.	5 13 7	11 58	3 23	hart	10 18
23	SU	10th Sun af. Trin. Her.	5 14 7	11 38	Sets.	hart	11 3
24	Mo	St. Bart. [scholl d. 1822	5 16 7	11 17	7 31	belly	11 47
25	Tu	High tides. Dry and	5 17 7	10 57	7 57	belly	0 25
26	We	warm.	5 19 7	10 36	8 22	reins	1 3
27	Th	Dr. A. Clarke d. 1832.	5 20 7	10 15	8 47	reins	1 41
28	Fri	St. Aug. D perigee.	5 21 7	9 54	9 14	sec.	2 18
29	Sat	St. John Baptist beh.	5 23 7	9 33	9 46	secr.	2 54
30	SU	11th Sun. after Trin.	5 24 7	9 11	10 22	secr.	3 36
31	Mo	Frequent showers.	5 26 7	8 50	11 6	thi.	4 30

And the waterfall from the echoing steep
 Peals like an organ its anthems deep:
 And at every pause the lute-like voice
 Of the Cuckoo sings—"Rejoice, rejoice!"
 But Autumn ere long shall shake the bough
 Of the quivering leaves, so musical now;
 And the flowers will decay, and the birds be mute,
 And the hoar frost crumble beneath thy foot.

MOON'S PHASES.

Full Moon 6th, 10h 7m afternoon.
 Last Quarter 14th, 11h 0m noon.

New Moon 22d, 11h 42m morning.
 First Quarter 29th, 2h 41m morn.

R. S. m.	Plac.	High water h. m.
12	sec.	4 7
43	sec.	4 52
rn	thi.	5 56
23	thi.	7 19
12	knee	8 45
11	knee	9 57
es.	knee	10 54
47	legs	11 45
18	legs	Morn
44	feet	0 27
7	feet	1 9
28	head	1 44
50	head	2 19
13	neck	2 51
38	neck	3 25
6	neck	4 0
38	arms	4 37
orn	arms	5 31
17	arms	6 48
6	breast	8 12
7	breast	9 25
23	hart	10 18
s.	hart	11 3
31	belly	11 47
57	belly	0 25
22	reins	1 3
47	reins	1 41
14	sec.	2 18
46	secr.	2 54
22	secr.	3 36
6	thi.	4 30

D. M.	D. W.	CALENDAR, &c.	R. & S. h. m h.	SUN'S dec. d. m.	R. & S. h. m.	Plac.	High water h. m.
1	Tu	Giles. Low tides.	5 28 7	8 28	Morn	thi.	5 41
2	We	London burnt, 1666.	5 30 7	8 6	0 1	knee	7 11
3	Th	Cromwell died, 1658.	5 31 7	7 44	1 4	knee	8 45
4	Fri	<i>Changeable,</i>	5 33 7	7 22	2 13	legs	9 53
5	Sat	Malta taken, 1800.	5 34 7	7 0	Rises	legs	10 48
6	SU	12th Sund. after Trin.	5 35 7	6 38	6 46	feet	11 32
7	Mo	Wm IV. & Q. Adelaide	5 36 7	6 16	7 9	feet	Morn
8	Tu	[crowned, 1831.	5 37 7	5 53	7 30	head	0 13
9	We	Flodden Field, 1613.	5 39 7	5 20	7 51	head	0 44
10	Th	<i>with showers.</i>	5 41 7	5 8	8 13	head	1 15
11	Fri		5 42 7	4 45	8 36	neck	1 44
12	Sat	[Wolfe killed, 1759.	5 44 7	4 22	9 3	neck	2 12
13	SU	13th S. af. Trin. Gen.	5 45 7	3 59	9 34	arms	2 41
14	Mo	Holy Cross. <i>Settled</i>	5 47 7	3 36	10 11	arms	3 13
15	Tu	Y'd L. rises 11h 40m	5 48 7	3 13	10 56	arms	3 55
16	We	Low tides.	5 50 7	2 50	11 48	breast	4 46
17	Th	Lambert. <i>and fine.</i>	5 51 7	2 27	MORN	breast	6 0
18	Fri	Cap. of Quebec, 1759.	5 53 7	2 4	0 48	hart.	7 31
19	Sat	Rigel rises 11h 45m	5 54 7	1 40	1 55	hart.	8 51
20	SU	14th Sun: after Trin.	5 56 7	1 17	3 7	belly	9 51
21	Mo	St. Matt. Sir W. Scott	5 57 7	0 54	SERS.	belly	10 43
22	Tu	[died, 1832.	5 59 7	0 30	6 23	belly	11 25
23	We	<i>Autumn begins.</i>	6 1 6	0 7	6 48	reins	0 1
24	Th	Moon per. <i>Fair and</i>	6 2 6	S. 17	7 15	reins	0 37
25	Fri		6 4 6	0 40	7 45	secr.	1 13
26	Sat	St. Cyprian.	6 5 6	1 4	8 21	secr.	1 50
27	SU	15th S. after Trin.	6 7 6	1 27	9 4	thi.	2 31
28	Mo	<i>pleasant.</i>	6 8 6	1 50	9 54	thi.	3 18
29	Tu	St. Michael.	6 10 6	2 14	10 55	knee	4 11
30	We	St. Jerome. <i>Cool.</i>	6 12 6	2 37	Morn	knee	5 22

THE FALLING LEAF.

It is a token that the hours
Of summer's beauty all are numbered,
When prostrate fall the sweetest flowers,
Which e'er the earth's fair bosom cumbered.

MOON'S PHASES.

Full Moon 6th, 0h 16m afternoon. New Moon 21st, 7h 23m afternoon.
Last Quarter 14th, 5h 8m noon. First Quarter 28th, 11h 2m morn.

D. M.	D. W.	CALENDAR, &c.	② R. & S. h. m. h.	Sun's dec. s d. m.	○ R. & sets h. m.	○ Plac.	High water h. m.
1	Th	Remigius.	6 13 6	3 0	0 3	legs	7 8
2	Fri	<i>Fine autumn</i>	6 15 6	3 24	1 13	legs	8 37
3	Sat	<i>weather</i>	6 16 6	3 47	2 23	feet	9 45
4	SU	16th Sun. after Trin.	6 18 6	4 10	3 31	feet	10 35
5	Mo	[merica, 1793.	6 19 6	4 34	rises.	feet	11 17
6	Tu	Faith.—Peace with A.	6 21 6	4 57	5 56	head	11 51
7	We	Mark. <i>for some</i>	6 22 6	5 20	6 17	head	morn.
8	Th	High tides. <i>days.</i>	6 24 6	5 43	6 40	neck	0 18
9	Fri	St. Denys.	6 25 6	6 6	7 5	neck	0 44
10	Sat	☽ apogee. <i>High winds</i>	6 26 6	6 28	7 33	neck	1 9
11	SU	17th S. aft Trin. Dun.	6 27 6	6 51	8 7	arms	1 36
12	Mo	[can's vict. 1797.	6 29 6	7 14	8 48	arms	2 6
13	Tu	Col. disc. Bahama 1492	6 30 6	7 37	9 36	breast	2 40
14	We	<i>and rain.</i>	6 32 6	7 59	10 32	breast	3 24
15	Th	☿ gr. elongation E.	6 34 6	8 21	11 36	breast	4 11
16	Fri	Latimer burnt, 1555.	6 36 6	8 44	morn.	hart.	5 21
17	Sat	Ethel. <i>Clear and</i>	6 37 6	9 6	0 45	hart.	6 48
18	SU	18th Sun aft Trin. St.	6 39 6	9 28	1 56	belly	8 15
19	Mo	[Luke. <i>pleasant.</i>	6 40 6	9 50	3 8	belly	9 20
20	Tu		6 42 6	10 11	4 22	reins	10 8
21	We	Bat of Trafalgar, 1805,	6 43 6	10 33	Sets.	reins	10 53
22	Th	<i>Frosty nights.</i>	6 45 6	10 54	5 42	seer.	11 30
23	Fri	☾ perigee.	6 46 6	11 16	6 15	seer.	0 16
24	Sat	<i>Rain or snow.</i>	6 47 6	11 37	6 56	thi.	0 47
25	SU	19th S. af. Tri. Crispin.	6 49 6	11 58	7 47	thi.	1 31
26	Mo	Cholera appeared in G.	6 50 6	12 18	8 46	knee	2 16
27	Tu	[B. 1831.	6 52 6	12 39	9 53	knee	3 6
28	We	St. Simon & St. Jude.	6 53 6	12 59	11 4	legs	4 5
29	Th	<i>Variable.</i>	6 54 6	13 19	morn.	legs	5 17
30	Fri	Low tides.	6 55 6	13 39	0 14	legs	6 50
31	Sat	<i>Rain.</i>	6 57 6	13 9	1 22	feet	8 16

1835.

afternoon.
2m morn.

ac.	High water h. m.
gs	7 8
gs	8 37
et	9 45
et	10 35
et	11 17
ead	11 51
ead	morn.
eck	0 18
eck	0 44
eck	1 9
rms	1 36
rms	2 6
rest	2 40
rest	3 24
rest	4 11
art.	5 21
art.	6 48
belly	8 15
belly	9 20
reins	10 8
reins	10 53
decr.	11 30
decr.	0 10
chi.	0 47
chi.	1 31
knee	2 16
knee	3 6
legs	4 5
legs	5 17
legs	6 50
foet	8 16

11th Nov. - 1st Snow. - about
 4 inches. with a strong
 frost which ~~continued~~ froze
 the River across on the
 14th - Can't. ² until the
 17th when it opened in
 some places ~~which~~ &
 finally cleared off on
 the 18th -

14th The Ward came up
 as far as Long Wharf & returned
 from there to the Overboard &
 unloaded a great deal of O^{il} &
 came up to the wharf on
 the evening of the 17th - went
 off about 11 o'clock on the
 18th - for the freight left at the
 Overboard.

11t

It is
 Of
 When

Sha

Full m
 Last Q

D. W. N. M.

1 SU

2 Mo

3 Tu

4 We

5 Th

6 Fri

7 Sat

8 SU

9 Mo

10 Tu

11 We

12 Th

13 Fri

14 Sat

15 SU

16 Mo

17 Tu

18 We

19 Th

20 Fri

21 Sat

22 SU

23 Mo

24 Tu

25 We

26 Th

27 Fri

28 Sat

29 SU

30 Mo

11th Month.

NOVEMBER.

1835.

THE FALLING LEAF.

It is a token that the chill
Of dark December hovers near us,
When the fleet north wind, fleet and
shrill,
Shall check the joys we raise to
cheer us.

It is a token that the space
Of life, by time's rude slight is
blasting, [Grace,
When souls redeemed by sovereign
Will live in pleasures which are
lasting.

MOON'S PHASES.

Full moon 5th, 5h 31m morning.
Last Quarter 13th, 9h 44m morn.

New Moon 20th, 5h 46m morning.
First Quarter 26th, 11h 2m noon.

D. M.	D. W.	CALENDAR, &c.	☉ R. & S.	SUN'S dec.	● R. & S.	☾ Plac.	High water
			h. m.	h. m.	h. m.		h. m.
1	SU	20th S. af T. All Saints.	6 59	6 14 19	2 29	feet	9 21
2	Mo	All Souls. <i>High</i>	7 0	5 14 33	3 33	head	10 9
3	Tu	<i>winds.</i>	7 2	5 14 57	4 35	head	10 44
4	We		7 3	5 15 15	riser.	neck	11 14
5	Th	[1821.	7 4	5 15 34	5 8	neck	11 43
6	Fri	Princess Charlotte died	7 5	2 15 52	5 34	neck	morn
7	Sat	Capogee. <i>Change</i>	7 6	5 16 10	6 6	arms	0 11
8	SU	21st Sund, after Trin.	7 8	5 16 28	6 45	arms	0 39
9	Mo	[Milton died, 1674.	7 9	5 16 45	7 30	breast	1 10
10	Tu	Luther born, 1493.	7 10	5 17 2	8 23	breast	1 43
11	We	St. Martin. <i>able.</i>	7 12	5 17 19	9 23	breast	2 18
12	Th	♀ in perihelion.	7 13	5 17 36	10 27	hart.	3 2
13	Fri	St. Britius. <i>Clear</i>	7 14	5 17 52	11 35	hart.	3 49
14	Sat	Warsaw taken, 1794.	7 15	5 18 8	morn	hart.	4 52
15	SU	22d S. af T. Machutus.	7 16	5 18 24	0 45	belly	6 17
16	Mo	<i>and fine.</i>	7 17	5 18 39	1 57	belly	7 30
17	Tu	St. Hugh.	7 18	5 18 54	3 11	reins	8 37
18	We	<i>Snow or hail.</i>	7 20	5 19 9	4 26	reins	9 26
19	Th		7 21	5 19 23	Sets.	seer.	10 14
20	Fri	♂ perigee. <i>Warm</i>	7 22	5 19 37	4 45	seer.	11 0
21	Sat	High tides. <i>for the</i>	7 23	5 19 51	5 32	chi.	11 46
22	SU	23d Sund, after Trin.	7 24	5 20 4	6 30	chi.	0 32
23	Mo	St. Clement. <i>season.</i>	7 25	5 20 17	7 37	knee	1 20
24	Tu	♀ gr elongation W.	7 26	5 20 29	8 49	knee	2 8
25	We	St. Catherine. <i>Pleasant</i>	7 27	5 20 41	10 2	legs	2 59
26	Th	<i>but cool.</i>	7 28	5 20 53	11 13	legs	3 56
27	Fri	Low tides. Reg. r. 11h	7 29	5 21 4	morn.	feet	4 59
28	Sat	<i>Looks like snow.</i>	7 30	5 21 15	0 21	feet	6 13
29	SU	Advent Sunday.	7 31	5 21 26	1 26	head	7 24
30	Mo	St. Andrew. <i>Stormy.</i>	7 32	5 21 36	2 29	head	8 32

12th Month.

DECEMBER.

1835.

THE CLOSING YEAR.

Let the bells upon their wheels,
(While our fond ideas veer,)
Ring the solemn midnight peals,
Ling'ring for the dying Year!

Hark! the peal has ceased to roll;
Silence reigns; but now a toll
Breaks upon the startling ear,—
Gone forever is the Year!

MOON'S PHASES.

Full Moon 5th, 0h 52m morning.
Last Quarter 13th, 0h 2m morning.

New Moon 19th, 4h 30m noon.
First Quarter 26th, 2h 50m noon.

D. M.	D. W.	CALENDAR, &c.	☾ R. & S. h. m. h. d. m.	SUN'S dec. S h. m. h. d. m.	● R. & S. h. m. h. d. m.	○ Plac.	High water h. m.
1	Tu	Emp. Alex. died, 1825.	7 32 5	21 46	3 29	head	9 25
2	We	<i>Cloudy and</i>	7 33 5	21 55	4 31	neck	10 5
3	Th	Rev. in England, 1688.	7 34 5	22 4	5 33	neck	10 41
4	Fri	Barbara. Moon apo.	7 34 5	22 12	rises	arms	11 13
5	Sat	<i>cold.</i>	7 35 5	22 20	4 7	arms	11 47
6	SU	2d Sunday in Advent.	7 36 5	22 28	4 43	arms	morn.
7	Mo	<i>Mild changes.</i>	7 36 5	22 35	5 26	breast	0 20
8	Tu	Concep. B. V. Mary.	7 37 5	22 42	6 18	breast	0 54
9	We	<i>Gloomy weather.</i>	7 37 5	22 48	7 16	hart.	1 27
10	Th		7 38 5	22 54	8 18	hart.	2 5
11	Fri	Sirius rises 8h 23m	7 38 5	22 59	9 24	belly	2 45
12	Sat	<i>Rain or snow.</i>	7 39 5	23 4	10 31	belly	3 33
13	SU	3d S. in Advent. Lucy.	7 39 5	23 9	11 39	belly	4 32
14	Mo	Low tides. <i>Hard</i>	7 39 5	23 13	morn	reins	5 32
15	Tu	<i>frosts</i>	7 40 6	23 16	0 49	reins	6 37
16	We		7 40 5	23 19	2 2	secre.	7 48
17	Th	Bolivar died, 1830.	7 40 5	23 22	3 17	secre.	8 47
18	Fri	<i>Soft</i>	7 40 5	23 24	4 36	thi.	9 43
19	Sat	Moon perigee.	7 40 5	23 26	5 58	thi.	10 40
20	SU	4th Sunday in Advent.	7 40 5	23 27	sets	knee	11 33
21	Mo	St. Thomas.	7 40 5	23 27	5 12	knee	0 25
22	Tu	<i>for some days.</i>	7 40 5	23 28	6 26	legs	1 11
23	We	Emp. Alex. b. 1777.	7 40 5	23 27	7 41	legs	1 59
24	Th	Ghent treaty sign. 1814	7 40 5	23 27	8 55	feet	2 47
25	Fri	Christmas Day.	7 40 5	23 26	10 6	feet	3 35
26	Sat	St. Stephen. <i>Fine.</i>	7 40 5	23 24	11 13	head	4 26
27	SU	1st S. af Christmas. St.	7 40 5	23 22	morn	head	5 13
28	Mo	Innocents. [[John.	7 39 5	23 19	0 18	head	6 17
29	Tu	Ld. Stafford executed,	7 39 5	23 16	1 22	neck	7 21
30	We	James. [1680.	7 39 5	23 13	2 24	neck	8 26
31	Th	Silvester. <i>Stormy.</i>	7 38 5	23 9	3 25	arms	9 23

PRO

Majors
LIEUT

Honoral
“
“

Lord Bi
Honoral

“
“
“

William
Mr. Joh
Isaac W
Reverend

Charles
Honoral
Honoral
Honoral

Honoral
“
“

George
Honoral

Timothy
Honoral
Honoral
Honoral

Hon. Th
Hon. Jo
Hon Wi

1835.

PROVINCE of NEW-BRUNSWICK.

HIS EXCELLENCY

Major-General Sir ARCHIBALD CAMPBELL, Bart., G. C. B.
LIEUTENANT-GOVERNOR and COMMANDER-IN-CHIEF of the Province of NEW-BRUNSWICK, &c. &c. &c.

EXECUTIVE COUNCIL.

Honorable Thomas Baillie,	Honorable George F. Street,
" Frederick P. Robinson,	" John S. Saunders.
" William F. Odell,	

LEGISLATIVE COUNCIL.

The Honorable the Chief Justice, *President*,
Lord Bishop of Nova-Scotia,
Honorable William Black,
" George Shore,
" Thomas Baillie,
" Harry Peters,
" Frederick P. Robinson,

Honorable Richard Simonds,
" Joseph Cunard,
" William H. Robinson,
" John S. Saunders,
" James Allanshaw,
" Amos E. Botsford.

OFFICERS OF THE LEGISLATIVE COUNCIL.

William Tyng Peters, Esquire, *Clerk*.
Mr. John Gregory, *Clerk Assistant*.
Isaac W. Jouett, Esq. *Sergeant at Arms and Usher of the Black*
Reverend George Coster, A. M., *Chaplain*. [Red.]

PRINCIPAL OFFICERS OF GOVERNMENT.

Charles Jeffrey Peters, Esquire, *Attorney General*.
Honorable George Frederick Street, *Solicitor General*.
Honorable John Simcoe Saunders, *Advocate General*.
Honorable William Franklin Odell, *Secretary, Register and Clerk of the Executive Council*.
Honorable Thomas Baillie, *Commissioner of Crown Lands and Surveyor General*.
George Pidgeon Bliss, Esquire, *Receiver General*.
Honorable Frederick P. Robinson, *Surveyor and Auditor of the King's Casual Revenue*.
Timothy R. Wetmore, Esq. *Collector of Rents on Coal Mines, &c.*
Honorable George Shore,
Honorable Frederick P. Robinson,
Honorable John S. Saunders,
Hon. Thomas Baillie,
Hon. John S. Saunders,
Hon William F. Odell, *Secretary to ditto*.

Commissioners of Accounts of the King's Casual Revenue.
Commissioners for managing and superintending the sale, levying, and collecting of His Majesty's Quit Rents.

HOUSE OF ASSEMBLY.

WILLIAM CRANE, Esquire, *Speaker*.

County of York.

John Allen, }
Jedediah Slason, } Esquires.
James Taylor, jun. }
Lemuel A. Wilmot, }

County of Saint John.

Stephen Humbert, }
Charles Simonds, } Esquires.
John R. Partelow, }
John Ward, junior, }

County of Charlotte.

James Brown, jun. }
Patrick Clinch, } Esquires.
George S. Hill, }
Thomas Wyer, }

County of Westmorland.

Edward B. Chandler, }
William Crane, } Esquires.
Rufus Smith, }
Robert Scott, }

County of Kent.

John W. Weldon, Esquire.

County of Northumberland.

Alexander Rankin, } Esquires.
John A. S. Street, }

King's County.

John Humbert, } Esquires.
John C. Vail, }

Queen's County.

Thomas Gilbert, } Esquires.
Charles Harrison, }

County of Sunbury.

George Hayward, } Esquires.
Thomas O. Miles, }

County of Gloucester.

William End, Esquire.

City of Saint John.

Thomas Barlow, } Esquires.
William B. Kinnear, }

OFFICERS OF THE HOUSE OF ASSEMBLY.

Charles P. Wetmore, Esquire, *Clerk*.

Mr. Thomas S. Wetmore, *Clerk Assistant*.

Henry G. Clopper, Esquire, *Sergeant at Arms*.

Reverend James Somerville, L. L. D., *Chaplain*.

COURT OF CHANCERY.

His Excellency the Lieutenant-Governor, *Chancellor*.

The Chief Justice, and the Judges of the Supreme Court, Assessors of the Court.

Honorable William F. Odell, Clerk of the Crown in Chancery.

Neville Parker, Esquire, }
Honorable George F. Street, } Masters.

Henry Swymmer, Esquire, }

Daniel Ludlow Robinson, Esquire, Register.

William M'Beath, Esquire, Sergeant at Arms attending the Court of Chancery.

Terms—The 2d Monday after each Term day of the Supreme Court.

COURT OF GOVERNOR AND COUNCIL,
*For hearing and determining Causes relating to Marriage
and Divorce.*

His Excellency the Lieutenant Governor, President.
Hon. William Botsford, Vice-President.
The Honorable His Majesty's Executive Council, Members.
Henry G. Clopper, Esquire, Clerk.

Terms—The first *Tuesdays* in February and July.

SUPREME COURT OF JUDICATURE.

Chief Justice—Honorable Ward Chipman, 29th Sept. 1834.

Justices,—

{	"	William Botsford,	2d April, 1823.
	"	James Carter,	October, 1834.
	"	Robert Parker,	October, 1834.

Charles S. Putnam, Esquire, Clerk of the Crown.

Honorable George Shore, Clerk of the Pleas.

William Tyng Peters, Esquire, Clerk of the Circuits; and Clerk of
the Crown on the Circuits.

Terms—The first *Tuesdays* in February and May, and the second
Tuesdays in July and October.

COURT OF VICE-ADMIRALTY.

Neville Parker, Esquire, Judge and Commissary.
Honorable John Simcoe Saunders, Advocate General.
Robert F. Hazen, Esquire, Registrar and Scribe.
Thomas M. Hazen, Esquire, Marshal.

*Court for the Trial and Punishment of Piracy,
and Offences committed on the High Seas.*

Judges—The Chief Justice, and the Judges of the Supreme Court,
Registrar and Scribe—William Tyng Peters, Esquire.

Marshal—Edward W. Miller, Esquire.

☞ This Court, which is held under a Commission issuing out of the
High Court of Admiralty in England, sits at Fredericton whenever
there is any business before it.

**COURT FOR THE PROBATE OF WILLS,
AND GRANTING ADMINISTRATIONS.**

Honorable William F. Odell, Register for the Province.

Honorable George F. Street, Surrogate, York County.

SURROGATES AND REGISTERS.

Henry Swynmer, Esquire, Surrogate, }
 Charles Drury, Esquire, Deputy Register, } Saint John.

Edward B. Chandler, Esquire, Surrogate, }
 James Stewart, Esquire, Deputy Register, } Westmorland.

Harris Hatch, Esquire, Surrogate, }
 Colin Campbell, Esquire, Deputy Register, } Charlotte.

Henry Nase, Esquire, Surrogate and Deputy Register, King's County.

N. H. DeVeber, Esquire, Surrogate, }
 Valentine H. Peters, Esquire, Deputy Register, } Queen's County.

George W. Cleary, Esquire, Surrogate, }
 N. Hubbard, Esquire, Deputy Register, } Sunbury.

Thomas H. Peters, Esquire, Surrogate, }
 John A. S. Street, Esquire, Deputy Register, } Northumberland.

William Chaudler, Esquire, Surrogate, }
 John W. Weldon, Esquire, Deputy Register, } Kent.

William End, Esquire, Surrogate and Deputy Register, Gloucester.

B. Crannall Beardsley, Esquire, Surrogate, }
 N. Merrill Hazen, Esquire, Deputy Register, } Carleton.

§ The Surrogate Courts are held every third day (Sunday excepted) in their respective Counties, but Letters of Administration may be had, and Wills proven, &c. at any time, by application to the Surrogate of the County.

COUNSELLORS AND ATTORNIES,

PRACTISING IN THE PROVINCE.

Fredericton.—Charles Jeffrey Peters, (*Attorney General*,) William Tyng Peters, Hon. John Simcoe Saunders, (*Advocate General*,) Hon. George F. Street, (*Solicitor General*,) George P. Bliss, Daniel Ludlow Robinson, George J. Dibblee, Charles S. Putnam, Charles P. Wetmore, George F. S. Berton, L. A. Wilmot, Charles Fisher, William H. Needham, George F. H. Minchin, and Daniel Hailes Smith, Esquires.

Saint John.—Henry Swynmer, William B. Kinnear, Neville Parker, James Peters, junior, Francis A. Kinnear, Robert F. Hazen, Le Baron Hazen, William Wright, H. N. H. Lugin, John M. Robinson, Moses H. Perley, Robert L. Hazen, Richard Sands, junior, John Johnston, James William Boyd, and Judah H. Hartt, Esquires.

Saint Andrews.—Harris Hatch, Alfred L. Street, Francis E. Putnam, Samuel H. Whitlock, James W. Chaudler, Richard M. Andrews, William Jack, and George D. Street, Esquires.

Miramichi.—Thomas H. Peters, John A. S. Street, William End, William Carman, junior, George Kerr, Charles A. Harding, George Wheeler, and James H. Peters, Esquires.

Dorche
 Sayre, and
 Bend o
 Non-re
 ander Stev
 Saint S
 Alexander
 Saint G
 Gage T
 Richibu
 Kingste
 Sunbur
 Woods
 thaniel M
 Esquires.
 Bay C
 Richard C

In
 Hon. Wil
 Harris H
 Thomas H
 John A. S
 ville P
 ry Sw
 William I
 Alfred L.
 Sylvester
 George W
 Charles S
 A. K. S
 Daniel L.
 Francis A
 Robert F
 Le Baron
 John W.
 William
 William
 Francis I
 Peter Stu
 Moses H
 Timothy
 James S
 John M.
 Andrew
 George I
 Robert F
 John Joh
 James V

Dorchester.—Edward B. Chandler, James Stewart, Thomas Smith Sayre, and Samuel Gay Morse, Esquires.

Bend of Petticodiac.—William Wiley, Esquire.

Non-residents practising in Dorchester.—James S. Morse, Alexander Stewart, and James Clarke Hall, Esquires.

Saint Stephens.—George Stilman Hill, Peter Stubbs, junior, and Alexander Campbell, Esquires.

Saint George.—Samuel G. Andrews, Esquire.

Gage Town.—Timothy Robert Wetmore, Esquire.

Richibucto.—John W. Weldon, and William Chandler, Esquires.

Kingston.—William Simpson, and Edward B. Smith, Esquires.

Sunbury.—George W. Cleary, Esquire.

Woodstock.—B. Crannall Beardsley, A. K. Smedes Wetmore, Nathaniel Merrill Hazen, Alexander N. Garden, and Charles F. Ketchum, Esquires.

Bay Chaleur.—William End, Andrew Barbarie, Robert H. Peters, Richard Carman, and Chipman Botsford, Esquires.

PUBLIC NOTARIES.

In the Province.

Hon. William F. Odell.

Harrie Hatch, Esq.

Thomas H. Peters, Esq.

John A. S. Street, Esq.

Willa Parker, Esq.

Henry Swymmer, Esq.

William End, Esq.

Alfred L. Street, Esq.

Sylvester C. Hawes, Esq.

George W. Cleary, Esq.

Charles S. Putnam, Esq.

A. K. Smedes Wetmore, Esq.

Daniel L. Robinson, Esq.

Francis A. Kinnear, Esq.

Robert F. Hazen, Esq.

Le Baron Hazen, Esq.

John W. Weldon, Esq.

William Wright, Esq.

William Carman, junior, Esq.

Francis E. Putnam, Esq.

Peter Stubbs, junior, Esq.

Moses H. Perley, Esq.

Timothy R. Wetmore, Esq.

James Stewart, Esq.

John M. Robinson, Esq.

Andrew Barbarie, Esq.

George Kerr, Esq.

Robert H. Peters, Esq.

John Johnston, Esq.

James William Boyd, Esq.

Richard Sands, junior, Esq.

George Wheeler, Esq.

Richard Carman, Esq.

William Chandler, Esq.

Hugh Munro, Esq.

Charles A. Harding, Esq.

William Jask, Esq.

Alexander Campbell, Esq.

James H. Peters, Esq.

Samuel Hallett Whitlock, Esq.

City of Saint John.

Charles J. Peters, Esq.

William Tyng Peters, Esq.

William Boyd Kinnear, Esq.

James Peters, junior, Esq.

City & County of St. John.

Horatio Nelson Hicks Lugrin, Esq.

Charlotte County.

William McLean,

John Wilson, and } Esquires.

Colin Campbell,

Saint Andrews.

Peter Stubbs, Esq.

Campo Bello.

Charles R. Hatheway, Esq.

West Isles.

Cavalier H. Jovett, Esq.

ROLL OF BARRISTERS & ATTORNIES, IN NEW-BRUNSWICK.

NAMES.	Admitted Attornies.	Sworn & enrol- led Barristers.
<i>Adm. & Gen.</i> Charles Jeffrey Peters, -	16 July 1794	24 May 1823
<i>not practicing</i> B. Crannall Beardsley, -	Oct 1796	17 July 1830
<i>not practicing</i> William Franklin Odell, -	18 July 1804	5 July 1806
Thomas Horsfield Peters, -	8 Oct 1806	17 Feb 1819
Harris Hatch, -	2 Feb 1808	17 Feb 1819
William Tyng Peters, -	17 Feb 1814	24 May 1823
<i>Adm. & Gen.</i> Jas. Shannon Morse, (non-residt.)	19 Feb 1814	19 Feb 1814
John Simcoe Saunders, -	18 Feb 1817	18 Feb 1819
<i>Adm. & Gen.</i> John Ambrose Sharman Street, -	22 Feb 1817	14 Oct 1819
<i>Adm. & Gen.</i> George Frederick Street, -	15 July 1818	12 July 1820
Henry Swymer, -	15 July 1818	21 May 1823
<i>not practicing</i> William Boyd Kinnear, -	18 May 1819	24 May 1823
<i>not practicing</i> George Widgeon Bliss, -	13 July 1819	24 May 1823
Neville Parker, -	14 July 1819	15 Oct 1821
<i>Dead</i> Alfred Lock Street, -	11 Oct 1820	24 May 1823
Charles Samuel Putnam, -	11 Oct 1821	14 Oct 1823
Daniel Ludlow Robinson, -	11 Oct 1821	14 Oct 1823
Edward Barron Chandler, -	11 Oct 1821	14 Oct 1823
George Stilman Hill, -	11 Oct 1821	16 July 1830
James Peters, junior, -	12 Oct 1821	18 May 1824
Alexander Stewart, (non-resident)	20 Feb 1822	18 May 1824
George William Cleary, -	10 Oct 1822	12 Oct 1824
William End, -	20 Feb 1823	17 Feb 1824
Charles Peters Wetmore, -	11 July 1823	14 July 1825
Abraham Kierstead S. Wetmore, -	18 Oct 1823	19 Oct 1825
George Jarvis Dibblee, -	18 Oct 1823	19 Oct 1825
Francis Andrew Kinnear, -	18 Oct 1823	19 Oct 1825
William Wiley, -	17 July 1824	17 July 1826
Robert Fraser Hazen, -	16 Oct 1824	20 Oct 1826
Le Baron Hazen, -	16 Oct 1824	20 Oct 1826
<i>Dead</i> John Wesley Weldon, -	21 May 1825	21 May 1827
Francis Ebenezer Putnam, -	16 July 1825	16 July 1827
William Wright, -	16 July 1825	16 July 1827
William Carman, junior, -	15 Oct 1825	5 Feb 1828
Peter Stubs, junior, -	25 Feb 1826	10 July 1828
Horatio Nelson Hicks Lugin, -	25 Feb 1826	18 Oct 1828
William Simpson, -	20 May 1826	10 July 1828
James Stewart, -	24 Feb 1827	5 Feb 1829
John Morris Robinson, -	10 May 1828	10 May 1830
Moses Henry Perley, -	12 July 1828	16 July 1830
Timothy Robert Wetmore, -	14 July 1828	16 July 1830
Edward Betts Smith, -	18 Oct 1828	14 Oct 1830
Edward Barbarie, -	18 Oct 1828	5 Feb 1831
William Chandler, -	18 Oct 1828	5 Feb 1831
Samuel Hallett Whitlock, -	18 July 1829	16 July 1831
James Watson Chandler, -	16 Oct 1829	16 Oct 1829
George Kerr, -	17 Oct 1829	9 Feb 1832

ROL

Ro
Ge
Ro
Ric
Le
Sa
Ric
Da
Joh
Ch
Ch
Ja
Na
Th
Ge
Ch
Ric
Wi
Wi
Ale
Ge
Ab
Jud
Cha
Jan
Geo
Joh
Chi
San
Ric

Henry
J. Phi
James
George
Charles
Mr. Jo

Wm. Ha
Perry Du

ROLL OF BARRISTERS AND ATTORNIERS, (CONTINUED.)

and enrol-
barristers.

ay 1823
ly 1830
ly 1806
eb 1819
eb 1819
ay 1823
eb 1814
eb 1819
ct 1819
ly 1820
ay 1823
ay 1823
ay 1823
ct 1821
ay 1823
ct 1823
ct 1823
ct 1823
ly 1830
ay 1824
ay 1824
ct 1824
eb 1824
ly 1825
ct 1825
ct 1825
ly 1826
ct 1826
ct 1826
ay 1827
ly 1827
ly 1827
eb 1828
ly 1828
ct 1828
ly 1828
b 1829
ay 1830
ay 1830
ay 1830
b 1831
b 1831
ay 1831
b 1829
b 1832

NAMES.

Admitted At-
tornies.

Sworn & enrol-
led Barristers.

Robert Leonard Hazen, -	17 Oct 1829	16 Oct 1831
George Frederick Street Berton, -	6 Feb 1830	9 Feb 1832
Robert Hazen Peters, -	10 May 1830	11 Oct "
Richard Sands, junior, -	17 July 1830	11 Oct "
Lemuel Allen Wilmot, -	17 July 1830	17 July "
Samuel George Andrews, -	17 July 1830	17 July "
Richard Garman, -	16 Oct 1830	17 Oct "
Daniel Hales Smith, -	16 Oct 1830	
John Johnston, -	5 Feb 1831	7 Feb 1833
Charles Fisher, -	5 Feb 1831	10 Oct "
Charles Botsford, -	7 May 1831	
James William Boyd, -	16 July 1831	16 July 1833
Nathaniel Merrill Hazen, -	16 July 1831	16 July "
Thomas Smith Sayre, -	15 Oct 1831	6 Feb 1834
George Wheeler, -	15 Oct 1831	15 Oct 1833
Charles Augustus Harding, -	11 Feb 1832	11 Feb 1834
Richard Milton Andrews, -	5 May "	15 July "
William Hazen Needham, -	8 May "	8 May "
William Jack, -	13 Oct "	
Alexander Campbell, -	13 Oct "	16 Oct "
George Ferdinand H. Minchin, -	13 Oct "	16 Oct "
Abraham Nelson Garden, -	9 Feb 1833	
Judah Hammond Hartt, -	11 May "	
Charles Frederick Ketchum, -	13 May "	
James Horsfield Peters, -	13 July "	
George Dixon Street, -	12 Oct "	
John Clarke Hall, (non-resident,) -		10 July 1834
Chipman Botsford, -	18 Oct. 1834	
Samuel Gay Morse, -	18 Oct. "	
Richard Marshall Clarke, -	18 Oct. "	

HIS MAJESTY'S CUSTOMS.

PORT OF SAINT JOHN.

Henry Bowyer Smith, Esquire, *Collector*.
J. Phipps Hood, Esquire, *Landing Surveyor*.
James Walker, Esquire, *Waiter and Searcher*.
George Hamilton Smith, Esquire, *Waiter and Searcher*.
Charles Drury, jun. Esquire, *Admeasurer of Ships and Vessels*.
Mr. John Longmaid, *Tide Surveyor*.

SUB-COLLECTORS.

Wm. Hannington, Esq. *Shediac*. | James Sayre, Esq. *Dorchester*.
Perry Dumaresq, Esq. *Dalhousie*. | David Swayne, Esq. *Richibucto*.

Henry E. Dibbles, Esquire, Sub-Collector at *Woodstock*, and T. M. De Blois, Esquire, Sub-Collector at *Bathurst*—Under the Principal Officer of His Majesty's Customs at Saint John.

WAREHOUSE DEPARTMENT.

William Stringer, Esquire, Warehouse Keeper at Saint John.
T. P. Marter, Esquire, Locker at ditto.

PORT OF MIRAMICHI.

John Wright, Esquire, *Collector*.
Samuel Forsayeth, Esquire, *Comptroller*.
George Henderson, Esquire, *Admeasurer of Vessels*.

PORT OF SAINT ANDREWS.

Alexander Grant, Esquire, *Collector*.
C. V. Forster, Esquire, *Comptroller and Landing Surveyor*.
W. F. Acheson, Esquire, *Waiter and Searcher*.

Wm. Ellman, Esq. 1st Clerk & Warehouse Keeper at St. Andrews.
J. L. Harley, 2d Clerk, Surveyor of Vessels, and Locker.

SUB-COLLECTORS.

James Campbell, Esq. (Acting,) West Isles and Campo Bello.	William Frankland, Esq'r. Grand Manan.
T. Armstrong, Esq. St. Stephen.	A. J. Wetmore, Esq. St. George.
Mr. Joseph Baxter, <i>Preventive Officer of His Majesty's Customs</i> .	

PROVINCIAL REVENUE.

Honorable Richard Simonds, Province Treasurer.

DEPUTY TREASURERS:

H. G. Clopper, Esq. Fredericton.	D. Stewart, Esq. Restigouche.
R. Robinson, Esq. St. Andrews.	John Miller, Esq. Bathurst.
C. H. Jouett, Esq. West Isles.	Bill Chappell, Esq. Bay Verte.
Robert Watson, Esq. St. Stephens.	William Wiley, Esq. Peticodiac.
T. H. Peters, Esq. Miramichi.	James Ketchum, Esq. Woodstock.
M. L. Backhouse, Esq. Sackville.	C. Seymour, Esq. St. Martins.
J. W. Weldon, Esq. Richibucto.	William Frankland, Esq. Grand Manan.
Wm. Hannington, Esq. Shediac.	

Benjamin C. Chaloner, Esquire, Gauger of Dutiable Articles and Tide Surveyor at the Port of Saint John.

David W. Jack, Esquire, ditto ditto at Saint Andrews.

George Henderson, Esquire, ditto ditto at Miramichi.

Robert
Angush
Benjamin
William
John Ab
Stephen
Edmund
Charles

Co

James U
Benjamin

UNIV

Chancell
or
Visitor—
President
Vice Pre
w

Professor

His Ex
The P
The V
The P

The G

The Lieu
The Lord
The Men
pr
The Spea
The May
The Ece
The Rec
Tog

Robert

The
year 180

Robert M'Intosh, Esquire, Tide Surveyor at Restigouche.
 Angush M'Intosh, Esquire, ditto at Bathurst.
 Benjamin Dawson, Esquire, Tide Waiter at ditto.
 William Payne, Provincial Tide Waiter at Fredericton.
 John Abram, ditto ditto at Saint John.
 Stephen Humbert, Esquire, Special ditto at ditto.
 Edmund Walsh, }
 Charles Smith, } Tide Waiters in Charlotte County.

Collectors of Duties on Horses and Cattle.

James Upham, Woodstock,	_____ , Fredericton, &c.
Benjamin Reed, Douglas,	Richard M'Laughlin, Gloucester.

UNIVERSITY OF KING'S COLLEGE—Fredericton.

Patron—THE KING.

Chancellor—His Excellency the Lieutenant Governor of the Province;
 or, in his absence, the President of the Province.

Visitor—The Right Reverend the Lord Bishop of the Diocese.

President—The Venerable the Archdeacon of the Province.

Vice President—(Resident and Acting Principal)—The Reverend Edwin Jacob, D. D.

Professors—
 } Reverend Edwin Jacob, D. D.
 } Reverend James Somerville, L. L. D.
 } Reverend George M'Auley, A. M.

COUNCIL :

His Excellency the Chancellor,	The Chief Justice,
The President,	Judge Botsford.
The Vice-President,	Speaker of the House of Assembly,
The Professors,	Secretary of the Province.

Registrar—Honorable George Frederick Street.

The Governor and Trustees of the Madras School in New-Brunswick.

The Lieutenant Governor or Commander in Chief for the time being.

The Lord Bishop of the Diocese. The Chief Justice.

The Members of His Majesty's Council, (not being Judges of the Supreme Court.)

The Speaker of the House of Assembly. The Judge of the Admiralty.

The Mayor and Recorder of Saint John.

The Ecclesiastical Commissary of the Province.

The Rector and Church Wardens of Trinity Church in Saint John.

Together with—The Honorable Edward J. Jarvis, and
 William Scovil, Esquire.

Robert F. Hazen, Esq. Treasurer.—J. W. Boyd, Esq. Secretary.

The MADRAS SCHOOL, in New-Brunswick, was founded in the year 1809, under the patronage and liberal encouragement of that ex-

emplary and accomplished Gentleman, the late General SMYTH, (then Lieutenant Governor of the Province,) for the instruction of children of both sexes, particularly the indigent, in the principles of true religion and useful knowledge, according to the system invented and first practised by Dr. BELL, at Madras; and since its foundation, the Governor and Trustees have established and supported a great number of Seminaries in various parts of the Province, and many thousand children have already reaped of the benefits extended by the same.



PROVINCIAL VACCINE ESTABLISHMENT OF NEW-BRUNSWICK.

CENTRAL STATION—SAINT JOHN.

His Excellency the Lieutenant Governor and His Majesty's Council,
Patrons of the Institution.
Honorable William Black, Director of the Institution.

COMMITTEE:

Fredericton—The Reverend James Somerville, L. L. D. and the Honorable William F. Odell.

Saint John—Reverend Jerome Alley, D. D.

VACCINATING SURGEONS:

Saint John—John Boyd, Esquire, M. D.

Fredericton—The Medical Officer in charge of the Troops.



PROVINCIAL MARINE HOSPITAL,

For the Relief of Sick and Disabled Seamen.

Commissioners—The Honorable William Black, Ralph M. Jarvis, Esq.
William Scovil, and John Ward, junior, Esquires.

Physician and Surgeon—John Boyd, Esquire, M. D.

Faculty of Physicians & Surgeons of New-Brunswick.

ORDINARY MEMBERS.

Alexander Boyle, M. D.
Thomas Paddock, Surgeon.
Thomas Walker, Surgeon.
Henry Cook, Surgeon.
J. Dormer, Surgeon.
M. Backhouse, Surgeon.
T. Emerson, Surgeon.
G. E. Baldwin, Surgeon.
W. Withon, Surgeon.
Jacob W. Barker, Surgeon.
J. Paddock, Surgeon.
William Livingston, Surgeon.
Alexander Pidler, Surgeon.
G. J. Harding, M. D.
Peter Marter, Surgeon.
Samuel Gove, Surgeon.
Robert Gordon, M. D.

HONORARY MEMBERS.

William B. Almon, M. D.

J. C. Warren, M. D.
I. Q. Short, M. D.—Deputy Inspector of Hospitals.
J. Bell, Ass't Surgeon, 81st Regt.
A. Duncan, M. D.
Thomas Shortt, M. D.
John Johnston, M. D.
G. J. Guthrie, M. D.
David Hossack, M. D.
J. W. Francis, M. D.
J. Howship.
A. Baxtor, M. D.—Inspector of Military Hospitals.
Edward Kiely, Esquire, R. N.
W. M'Cartney, M. D. 81st Regt.
Collin Allan, M. D.—Surgeon to the Forces.
Henry Davies, M. D.
S. M. Hadaway—Assistant Surgeon to the Forces.
T. Buchanan, Surgeon.

John B.
Robert
S. G. I.
George
William
William
Samuel

New-L

H
The H

Peter
Richard
William
Thomas
Hugh

NEW

Presi
Vice

Treat
Secret

Depositi

St. Jo

Preside
Treasu
Secreta

MEDICAL PRACTITIONERS,

independent of the foregoing Association.

John Boyd, Esquire, M. D. Saint John.
 Robert Bayard, Esquire, M. D. ditto.
 S. G. Hamilton, Esquire, C. M. ditto.
 George P. Peters, Esquire, M. D. Fredericton.
 William Fraser, Esquire, C. M. ditto.
 William Thompson, Esquire, M. D. Saint Andrews.
 Samuel Bayard, Esquire, M. D. Saint Stephen.



New-Brunswick Agricultural and Emigrant Society.

His Excellency the Lieutenant Governor, Patron.

The Honorable Judge Botsford, Vice President.

" Chief Justice Chipman,
 " Frederick P. Robinson,
 " Harry Peters,
 " Richard Simonds,

Peter Fraser, James Miles,
 Richard Ketchum, John Allen,
 William Crane, Samuel Freeze,
 Thomas Wyer, Thomas O. Miles,
 Hugh Munroe, John W. Weldon,

Members of the
 Central
 Committee.

_____, Secretary and Treasurer.



Provincial Agents for Emigrants.

Saint John—Alexander Wedderburn, Esquire.
 Miramichi—Henry Cunard, Esquire.
 Saint Andrews—Beverley Robinson, Esquire.



NEW-BRUNSWICK AUXILIARY BIBLE SOCIETY.

Patron—His Excellency the Lieutenant Governor.

President—John M. Wilmot, Esquire.

Vice Presidents—Charles J. Peters, John Ferguson, William B. Kinneer, and Robert Parker, Esquires.

Treasurer—Angus M'Kenzie, Esquire.

Secretary—Mr. James Paterson, Rector of the Grammar School.

Depository—Store of Mr. Leveret H. DeVeber, Prince William-street, Saint John.

BRANCH SOCIETIES.

St. John Ladies' Bible Association.

President—Mrs. Neville Parker.
 Treasurer—Mrs. Ferguson.
 Secretary—Mrs. D. Scovil.

St. Andrew's Ladies' Bible Association.

President—Mrs. D. W. Jack,
 Treasurer—Mrs. Adam Jack,
 Secretary—Mrs. Putnam.

Saint Stephen.

President—G. Hill, Esq.
V. President—T. Armstrong, Esq.
Treasurer—Aaron Upton, Esq.
Secretary—Mr. David A. Ross.

Grand Lake.

President—Mr. John Robertson.
Vice-President—Mr. G. Clark.
Treasurer—Mr. David Palmer.
Secretary—Mr. John Palmer.

Sussex Vale.

President—George Morton, Esq.
V. President—A. C. Evanson, Esq.
Secretary—Mr. J. R. Leggett.

Springfield.

President—Mr. Vincent White,
Vice-President—Rev. S. Bancroft,
Treasurer—Captain John Davis,
Secretary—Mr. C. Hamilton.

Washademoac.

President—Elder Richard Wills,
Treasurer—Mr. Isaac Worden,
Secretary—Mr. William Day.

Westmorland.

President— — — —
Treasurer— — — —
Secretary—Mr. James Ross.

BANK OF NEW-BRUNSWICK.

(IN SAINT JOHN.)

Capital, £50,000.

Solomon Nichols, Esquire, President.

DIRECTORS :

Thomas Barlow,
Robt. W. Crookshank,
Noah Di-brow,
L. H. De Veber,
Hugh Johnston,
Robert F. Hazen,

Esquires.

James Kirk,
Nehemiah Merritt,
Neville Parker,
John Robertson,
William Scovil,
Stephen Wiggins,

Zalmon Wheeler, Esquire, Cashier.

Neville Parker, Esquire, Solicitor.

James William Boyd, Esquire, Notary.

COMMERCIAL BANK OF NEW-BRUNSWICK.

(IN SAINT JOHN.)

INCORPORATED BY ROYAL CHARTER.

Capital, £150,000.

Henry Gilbert, Esquire, President.

DIRECTORS :

Daniel Ansley,
John M. Wilmot,
John Wishart,
Benjamin Smith,
Augustus W. Whipple,
M. H. Perley.

Esquires.

Ralph M. Jarvis,
William Leavitt,
Charles Ward,
John Kinnear,
Charles Simonds,
John Kerr,

M. H. Perley, Esquire, Solicitor.

CENTRAL BANK OF NEW-BRUNSWICK.

(IN FREDERICTON.)

Capital, £15,000.

Henry G. Clopper, Esquire, President.

DIRECTORS:

Hon. John S. Saunders,	} Esquires.	Thomas Pickard,
Joseph Gwynor,		W. J. Bedell,
Francis E. Beckwith,		George J. Dibbles,
Oliver Smith,		James Taylor, junior,

Mr. Robert Gowan, Cashier,
Charles Fisher, Esquire, Solicitor.



**NEW-BRUNSWICK
FIRE INSURANCE COMPANY.**

John M. Wilmot, Esquire, President.

DIRECTORS :

James Hendricks,	} Esquires.	Ralph M. Jarvis,
John Boyd, M. D.		Daniel Ansley,
F. A. Kinnear,		William Jarvis,
John Hammond,		John Kinnear,
Gilbert T. Ray,		Ambrose S. Perkins,
Robert F. Hazen,		M. H. Perley,

Robert F. Hazen, Esquire, Solicitor.
Daniel Jordan, Esquire, Secretary.



NEW-BRUNSWICK MINING COMPANY.

N. Merritt, Esquire, President.

DIRECTORS :

Hon. Robert Parker,	} Esquires.	Stephen Wiggins,
Hugh Johnston,		John M. Wilmot,
Henry Gilbert,		E. DeW. Ratchford,
John Ward, junior,		James Kirk,
Robert F. Hazen,		William Leavitt,
George D. Robinson,		Robert W. Crookshank.

T. L. Nicholson, Esquire, Secretary.



SAINT JOHN MILLS AND CANAL COMPANY.

Isaac Woodward, Esquire, President.

DIRECTORS :

John Otis,	} Esquires.	Charles Vaughan,
Calvin Spaulding,		Isaac Gage,

Isaac Gage, Esquire, Treasurer.

M. H. Perley, Esquire, Secretary.

M. H. Perley, Esquire, Solicitor.

NEW-BRUNSWICK AND NOVA-SCOTIA LAND COMPANY.

(INCORPORATED IN LONDON.)

CAPITAL—£200,000;—with power to increase to £400,000.

Governor—John Labouchere, Esquire.

Deputy Governor—Edward Blorent, Esquire.

DIRECTORS :

Sir John Burke, Baronet,	} Esquires.	John Moxen,
George H. Hooper,		David Stewart,
Ambrose Humphreys,		Lestock P. Wilson,
Joseph Kay,		John Wright,
John T. Maubert,		

Acting Director—John Bainbridge, Esquire.

Auditors—} Bartholomew Jeffrey,
William Newton,
George Palmer, } Esquires.

Bankers—} Messrs. Williams, Deacon, Labouchere & Co. Birchin
Lane ; Wright & Co. Henrietta-street, Covent Garden.

Solicitor—Nathaniel Hooper, Esquire.

Commissioner at Fredericton—Edward Nichols Kendall, Esq. R. N.

Solicitor—Charles S. Putnam, Esquire.

Honorary Commissioner at Chatham, (Miramichi)—Henry Cunard, Esquire.

Resident Agent at the South West Branch—William Epps Cormack, Esquire.

Resident Agent at Saint John—John V. Thurgar, Esquire.

Colonial Treasurers—} Hon. Joseph Cunard, Chatham, (Miramichi).
Hon. Samuel Cunard, Halifax, (N. S.)

Company's Office—No. 15, King's Arms Yard, London.



SUPERVISORS OF GREAT ROADS.

James A. MacLauchlan—Fredericton to the Canada Line.

James M'Donald—Fredericton to Saint John, by the Nerepis.

L. B. Raics'ord—Fredericton to Northumberland.

Alex. Goodfellow—Chatham to Richibucto, and Newcastle to Foreins'.

Dudley Perley—Richibucto to Chediac.

Joseph Read—Foreins' to Restigouche.

Dudley Perley—Chediac to Bend of Peticodiac, & Dorchester to Chediac.

George Anderson—Carleton to Saint Andrews.

Benjamin L. Peters—Saint John to the Hammond River.

George H. Hazen—Hammond River to Westmorland.

Nathaniel Hubbard—Short Ferry to the Finger Board.

Caleb Wetmore—Head of Belisle to forks of the road at A. Hennigar's.

A. E. Botsford—King's County Line to the Missequash.

LAND

00,000.

Co. Birchin
nt Garden.

Esq. R. N.

ry Cunard,

Epps Cor-

ie.

Miramichi.
N. S.)

epis.

to Foreigna'.

r to Chediac.

Hennigar's.

CLERGY OF THE ESTABLISHED CHURCH OF ENGLAND.

The Right Rev. JOHN, Lord Bishop of Nova Scotia, exercising by His Majesty's Letters Patent, Episcopal Jurisdiction over the Province.

Venerable George Coster, A. M. Archdeacon.

Rev. Benjamin G. Gray, Rector of Saint John.
Rev. William Gray, Assistant Missionary at Saint John.
Rev. Gilbert L. Wiggins, A. M. Assistant do.—officiating at Portland.
Rev. Frederick Coster, Rector of Carleton.
Rev. George Coster, M. A. Rector of Fredericton.
Rev. Abraham Wood, Rector of Waterborough.
Rev. Jerome Alley, D. D. Rector of Saint Andrews.
Rev. Skeffington Thompson, L. L. D. Rector of Saint Stephen.
Rev. James Somerville, L. L. D. Rector of Douglas.
Rev. Raper Milner, Rector of Maugerville.
Rev. Samuel D. L. Street, Rector of Woodstock.
Rev. Samuel R. Clarke, Rector of Gagetown.
Rev. ———, Rector of Sussex.
Rev. Nelson Arnold, Assistant Missionary at Sussex.
Rev. Elias Scovil, Rector of Kingston.
Rev. Christopher Milner, Rector of Sackville.
Rev. ———, Rector of Westfield.
Rev. Samuel Bacon, Rector of Miramichi.
Rev. Samuel Thompson, Rector of Saint George.
Rev. W. Walker, Rector of Hampton.
Rev. Alexander C. Somerville, Rector of Bathurst.
Rev. ———, Rector of Prince William.
Rev. George Townshend, officiating at Westmorland.
Rev. George S. Jarvis, Rector of Hampstead.
Rev. John Black, Rector of Shediac.
Rev. George M'Cawley, occasional Visiting Missionary.

CLERGY OF THE ESTABLISHED CHURCH OF SCOTLAND.

Fredericton—Rev. John Birkmyre, A. M.
Saint John—Rev. Robert Wilson, A. M.
Saint Andrews—Rev. Alexander M'Lean.
Saint James—Rev. Peter M'Intyre.
Newcastle (Miramichi)—Rev. James Souter, A. M.
Chatham, (Miramichi)—Rev. Robert Archibald.
Resigouche—Rev. James Steven.
Richibucto—Rev. James Hannay.
Tabisintac and Bay du Vin—Rev. Simeon Fraser.
———, Itinerating Missionary for the Province.
Rev. Alexander Farquharson, Missionary at Cape Breton, in connexion with the Presbytery of New-Brunswick.

ROMAN CATHOLIC CLERGY.

Right Reverend Aeneas B. M'EACHERN, Bishop of Charlotte Town.
(Prince Edward Island,) and Vicar Apostolic of New-Brunswick.

ROMAN CATHOLIC CLERGY.

Saint John—Rev. James Dunphy.	Caraquet—Rev. Mr. Fortier.
Rev. Richard Vereker, Missionary.	Memramcook—Rev. Mr. Coutier.
Fredericton—Rev. M. M'Sweeney.	Chediac—Rev. Mr. Gagnon.
Miramichi—Rev. Michael Engen.	Madawaska—Rev. Mr. Sirois.
St. Andrews—Rev. J. Cummins.	Chimigoui—Rev. Mr. Paquet.
Richibucto—Rev. Mr. Tetrau.	Village of Savages—Rev. Mr. Bel-
Nepisiguit—Rev. Mr. Naud.	leau.

WESLEYAN MISSIONARIES,

In the New-Brunswick District.

Saint John—Rev. Enoch Wood, and Rev. Arthur M'Nutt.
 Fredericton—Rev. Samuel Joll; Rev. Wm. Bannister, As't Missionary
 Sheffield and Gagetown—Rev. Albert Desbrisay.
 Saint Andrews—Rev. Richard Shepherd.
 Saint Stephen's and Saint David's—Rev. Sampson Busby; Mr. Peter
 Sleep, Assistant Missionary.
 Westmorland—Rev. John B. Strong, and Rev. Richardson Douglass.
 Miramichi—Rev. Richard Williams. Bathurst—Rev. Geo. Johnson.
 Sussex Vale—Rev. M. Pickles. Peticodiac—Rev. A. W. M'Leod.
 Woodstock and Wakefield—Rev. Henry Daniel.
 Annapolis and Digby, (N. S.)—Rev. William Smithson.
 Bridgetown, (N. S.)—Rev. George Miller.

BAPTIST MINISTERS IN NEW-BRUNSWICK.

Saint John— — — —.	2d Springfield—Rev. J. Blakeney.
St. David's & St. Stephen's—Rev.	Miramichi—Rev. James Towzer.
Thomas Magee.	St. George—Rev. S. Robinson.
Fredericton—Rev. F. W. Miles.	Hopewell—Rev. James Stevens.
Brighton—Rev. Gilbert Spurr.	Dorchester—Rev. William Sears.
Waterborough—Rev. Benj. Coy.	Salisbury—Rev. Joseph Crandall.
Prince Wm.—Rev. L. Hammond,	Sackville—Rev. Robert Davis.
and Rev. Thomas Saunders.	L. Hampton—Rev. D. Crandall.
Norton and Upper Hampton—Rev.	Sussex Vale—Rev. Titus Stone.
S. Bancroft.	New Canaan—Rev. Chas. Lewis.

PRESBYTERIAN CHURCH OF NOVA-SCOTIA,

IN CONNEXION WITH THE UNITED ASSOCIATE SYNOD, SCOTLAND.

Chatham—Rev. John M'Curdy.
 New Mills and Bathurst—Rev. James Waddell.
 New Carlisle, &c. (Bay Chaleur)—Rev. Anthony F. M'Cabe.

CENTRAL COMMITTEE, (at Saint John,)

*For Managing the Fund for the promotion of Missionary
 and other objects, connected with the welfare of the Scottish
 Church in New-Brunswick:*

Daniel Leavitt, }	Es-	John Robertson,
Robert Rankin, }	quires. }	Thomas Walker,
Robert Rankin,	Esquire,	Treasurer.

COUNTY OF YORK.

John Allen, Peter Fraser, Thomas C. Lee, and John Robinson, Esquires, Justices of the Inferior Court of Common Pleas.

John Allen, Peter Fraser, Thomas C. Lee, John Robinson, Jacob Ellegood, Daniel Morehouse, Henry Smith, James A. MacLauchlan, Thomas Emerson, Thomas Jones, Jedediah Slason, George Minchin, James Harrison, William Davidson, Patrick Campbell, James Miles, Ross Currie, Edward Nicholas Kendall, Robert Power, (*of the Quorum*.) and Adam Allan, Esquires, Justices of the Peace.

Edward W. Miller, Esquire, High Sheriff.—Mr. William M'Beath, Deputy Sheriff.

Henry G. Clopper, Esquire, Keeper of the Rolls and Clerk of the Peace and Inferior Court of Common Pleas.

Henry G. Clopper, Esquire, Register of Deeds and Wills.

William Woodforde, Esquire, Coroner.

Mark Needham, Esquire, County Treasurer.

Charles J. Peters, Hon. G. F. Street, G. P. Bliss, Hon. John S. Saunders, D. L. Robinson, G. J. Dibblee, C. S. Putnam, C. P. Wetmore, G. F. S. Berton, L. A. Wilmot, Charles Fisher, W. H. Needham, G. F. H. Minchin, and Daniel Morehouse, Esquires, Commissioners for taking Affidavits in the Supreme Court.

Daniel Morehouse, Peter Fraser, and William Tyng Peters, Esquires, Commissioners for taking Bail in the Supreme Court.

James A. MacLauchlan, John Allen, Jacob Ellegood, Daniel Morehouse, John Robinson, and James Harrison, Esquires, Commissioners for solemnizing Marriage.

Asa Coy, Francis E. Beckwith, and Mark Needham, Licensed Auctioneers.



FIREWARDS IN FREDERICTON.

Honorable George Shore.
Honorable Thomas Baillie,
Jedediah Slason, Esquire,
George Minchin, Esquire,

Mark Needham, Esquire.
William Wilmot, Esquire,
William Dell Hartt, Esquire,
John A. Beckwith, Esquire.

FREDERICTON UNION FIRE CLUB.

Benjamin Woolhaupter, Esquire, President.

Asa Coy, Esquire, Vice-President.

Mr. Thomas C. Everitt, Secretary and Treasurer.

FREDERICTON LIBRARY.

Reverend Dr. Somerville, President.

Honorable George F. Street, Vice-President.

Henry G. Clopper,
Peter Fraser, } Esquires,—Committee.

J. E. Woolforde,

Henry G. Clopper, Esquire, Secretary and Treasurer.

Mr. John Baird, Librarian.

Terms—£5 on admission, and 20s. annually.—Contains 1500 volumes.

FREDERICTON SAVINGS' BANK.

His Excellency the Lieutenant-Governor, Patron.
_____, President.

Peter Fraser, Esquire, Vice-President.
James Taylor, senior, Esquire, Treasurer.
Henry G. Clopper, Esquire, Secretary.
Mr. John F. Taylor, Cashier and Register.

FREDERICTON AUXILIARY BIBLE SOCIETY.

President— _____
Treasurer—Peter Fisher, Esq. Secretary—James Taylor, jun. Esq.

FREDERICTON SOCIETY OF SAINT ANDREW.

John Simpson, Esquire, President.
Mr. Robert Gowan, Vice-President.
Mr. John F. Taylor, Treasurer.
Mr. John Gregory, Secretary.
Rev. James Somerville, L L D. Chaplain.

FREDERICTON SOCIETY OF SAINT PATRICK.

Honorable Thomas Baillie, President.
George Minchin, Esquire, Vice-President.
Mr. Joseph Beck, Treasurer.
Mr. Matthew Brannen, Secretary.
Mr. Stephen White, Assistant Secretary.

FREDERICTON SOCIETY OF SAINT GEORGE.

_____, President.
Honorable George Shore, }
J. E. Woolford, and } Vice-Presidents.
Honorable G. F. Street, }
Venerable Archdeacon Coster, } Chaplains.
Reverend Edwin Jacob, D. D. }
Honorable G. F. Street, Treasurer and Secretary.

COUNTY OF CHARLOTTE.

Hugh Mackay, Peter Stubs, Thomas Wyer, Hon. James Allanshaw, and Thomas Jones, Esquires,—Justices of the Court of Common Pleas.

Hugh M'Kay, Peter Stubs, Thomas Wyer, Honorable James Allanshaw, Peter M'Callum, Thomas Armstrong, William Frankland, Rev. Jerome Alley, John Wilson, Tristram Moore, Patrick Clinch, David Mowatt, Thomas Jones, Samuel Abbot, William Ker, George M. Porter, James White, James Rait, John Chaffey, John Wilkinson, Wilford Fisher, Joshua Knight, Cavalier H. Jouett, James Douglass, William Garnett, Nehemiah Marks, John M'Lauchlan, (of the Quorum,) and James Frink, Esquires, Justices of the Peace.

Harris Hatch, Esquire, Keeper of the Rolls and Clerk of the Peace and Inferior Court of Common Pleas.

Colin Campbell, Esquire, High Sheriff.

Harris Hatch, Esquire, Register of Deeds and Wills.

Donald M'Laughlan, and David Mowatt, Esquires, Coroners.

David W. Jack, County Treasurer.

The Justices of the Pleas, together with Charles R. Hatheway, Joseph N. Clark, Harris Hatch, Alfred L. Street, George S. Hill, F. E. Putnam, Samuel H. Whitlock, George Ker, Thomas Chandler, S. G. Andrews, R. M. Andrews, Alexander Campbell, Samuel Abbot, and Wilford Fisher, Esquires, Commissioners for taking Affidavits in the Supreme Court.

Hugh Mackay, Colin Campbell, Peter Stubs, Thomas Wyer, Samuel Abbot, Joseph N. Clark, Charles R. Hatheway, Thomas Jones, and Wilford Fisher, Esquires, Commissioners for taking Bail in the Supreme Court.

Hugh M'Kay, Tristram Moore, Hon. James Allanshaw, James Chafsey, Thomas Wyer, P. M'Callum, and John Wilkinson, Esquires, Commissioners for solemnizing Marriage.

J. H. Whitlock, William Garnett, Adam Jack, James Boyd, Samuel Abbot, and Gilbert Ruggles, Licensed Auctioneers.

CHARLOTTE COUNTY BANK.

Harris Hatch, Esquire, President.

DIRECTORS :

Thomas Wyer,	} Esquires.	John Wilson;
James Campbell,		John M'Laughlan,
James Rait,		John M'Alister,
John M'Master,		James Douglas,

Peter Stubs, Esquire, Cashier.

CHARLOTTE COUNTY SAVINGS' BANK.

Thomas Wyer, Esquire, President.

Peter Stubs, Esquire, Cashier.

Committee—H. Hatch, S. Frye, J. M'Master, P. Stubs, J. Parkinson, W. Kerr, and J. M'Laughlan, Esquires.

PUBLIC GRAMMAR SCHOOL IN SAINT ANDREWS.

President—Reverend Dr. Alley.

Directors:—Colin Campbell, David W. Jack, Thomas Wyer, Dr. J. Frye, and Peter Stubs, Esquires.

Master—Reverend John Cassell.

MARINE HOSPITAL—SAINT ANDREWS.

Commissioners—Harris Hatch, Wm. Ker, and D. W. Jack, Esquires.

COUNTY OF WESTMORLAND.

Samuel Gay, Rufus Smith, John Keillor, William Crane, and Hon. Amos E. Botsford, Esquires, Justices of the Inferior Court of Com. Pleas.

Samuel Gay, Rufus Smith, John Keillor, William Crane, Amos Ed. win Botsford, James Easterbrooks, Edward Dixon, James Sayre, Phi-

hip Palmer, Christopher Milner, Malcolm Wilmot, John Smith, Bill Chappell, Humphrey Gilbert, Marmaduke L. Backhouse, Harman Trueman, Lewis Trites, William Chapman, George Steeves, Peter M'Lellan, (of the Quorum,) Robert Scott, Abel S. Gore, William Wilson, John Chapman, William C. Smith, Daniel Hanning, and John Thompson, Esquires, Justices of the Peace.

William P. Sayre, Esquire, High Sheriff.

Edwrd B. Chandler, Esquire, Keeper of the Rolls, and Clerk of the Peace and Inferior Court of Common Pleas.

John Edgett, Charles F. Allison, and Andrew Weldon, Esquires, Coroners.

Marmaduke L. Backhouse, Esquire, Register of Deeds and Wills.

Samuel Gay, Rufus Smith, John Keillor, William Crane, Hon. Amos E. Botsford, Edward B. Chandler, William Wiley, James Stewart, Thomas S. Sayre, and Abel S. Gore, Esquires, Commissioners for taking Affidavits to be read in the Supreme Court; and the Justices of the Common Pleas, together with Lewis Trites, and Abel S. Gore, Esquires, Commissioners for taking Bail in the same.

Rufus Smith, John Keillor, William Crane, William Scott, William Hannington, William Chapman, Bill Chappell, Lewis Trites, and Robert Scott, Esquires, Commissioners for solemnizing Marriage.

Thomas Trenholm, Andrew Weldon, junior, and George Pittfield, Esquires, Licensed Auctioneers.

COUNTY OF NORTHUMBERLAND.

Alexander Davidson, John Fraser, William Abrams, Esquires, and Hon. Joseph Cunard, Justices of the Inferior Court of Common Pleas.

Alexander Davidson, John Fraser, William Abrams, Hon. Joseph Cunard, John Clarke, John T. Williston, William Joplin, Alexander Goodfellow, John Wright, Christopher Clarke, Dudley Perley, John Nesmith, Donald M'Kay, Robert Doak, John Campbell, James Gil-mour, J. Donald, S. Henderson, (of the Quorum,) and Thomas C. Allan, Esquires, Justices of the Peace.

Richard Samuel Clarke, Esquire, High Sheriff.

Thomas H. Peters, Esquire, Keeper of the Rolls, and Clerk of the Peace and Inferior Court of Common Pleas.

J. Wright, J. Anderson, and J. M. Johnson, Esquires, Coroners.

J. A. Street, Esquire, Register of Deeds and Wills.

William Loch, John Nesmith, Alexander Davidson, Hon. Joseph Cunard, Robert Doak, Christopher Clarke, and John J. Donald, Esquires, Commissioners for taking Bail in the Supreme Court.

John Nesmith, Thomas H. Peters, J. A. Street, William End, William Carman, junr. George Kerr, C. A. Harding, Hon. Joseph Cunard, Robert Doak, Christopher Clarke, and John J. Donald, Esquires, Commissioners for taking Affidavits in the Supreme Court.

William Abrams, Alexander Goodfellow, Donald M'Kay, Robert Doak, and John Campbell, Esquires, Commissioners for Solemnizing Marriage.

William Davidson, Richard Samuel Clarke, Patrick Henderson, Jas. Wright, John Bell, James Davidson, Thomas C. Allan, John M. Johnson, Patrick Brannen, C. Clarke, Pinchas Williston, and Henry C. D. Carman, Licensed Auctioneers.

Hen
and Jo
of Cor
Hen
John
Smith,
A. Sco
Barbar
bert (o
Peace.
Wal
Aea
Edw
Peace
Niny
Henry
Frost,
Walt
Gramm
John
Hazen,
taking
Simpson
Affidavi
Henry
vil, Joh
sioners
Caleb
John Hu

Honor
quires, J
Valenti
Richard
Thomas
(of the
Peace.
Nathan
T. R.
Peace an
Valenti
Thoma
roners.
Timoth
of the Gr
Valenti
for taking
Scovil, a
davits in

KING'S COUNTY.

Henry Nase, David B. Wetmore, George H. Hazen, Isaac Perry, and John Townshend Coffin, Esquires, Justices of the Inferior Court of Common Pleas.

Henry Nase, David B. Wetmore, George H. Hazen, Isaac Perry, John Townshend Coffin, Thomas Ketchum, Rufus Rulofson, John Smith, James Brittain, Gould Picket, Benjamin B. Crawford, Henry A. Scovil, John C. Vail, Allyn C. Evanson, William M'Leod, John Barbarie, Ebenezer Smith, Azor Hoyt, Isaac Haviland, John Humbert (*of the Quorum*), and Samuel Foster, Esquires, Justices of the Peace.

Walter Bates, Esquire, High Sheriff.

Asa Davidson, Esquire, Deputy Sheriff.

Edward Betts Smith, Esquire, Keeper of the Rolls and Clerk of the Peace and Inferior Court of Common Pleas.

Ninyon Chaloner, Esquire, Register of Deeds and Wills.

Henry Nase, David B. Wetmore, George N. Arnold, and William Frost, Esquires, Coroners.

Walter Bates, and Edward G. N. Scovil, Esquires, Trustees of the Grammar School.

John Coffin, Elias Scovil, D. B. Wetmore, Henry Nase, George H. Hazen, Isaac Perry, and John T. Coffin, Esquires, Commissioners for taking Bail in the Supreme Court.—John Coffin, Elias Scovil, William Simpson, and Edward B. Smith, Esquires, Commissioners for taking Affidavits in the same.

Henry Nase, David B. Wetmore, William M'Leod, Henry A. Scovil, John C. Vail, Isaac Perry, James Brittain, Esquires, Commissioners for solemnizing Marriage.

Caleb Wetmore, Simon Baxter, John Sheck, William Frost, and John Humbert, Licensed Auctioneers.

QUEEN'S COUNTY.

Honorable Harry Peters, Valentine H. Peters, Samuel Scovil, Esquires, Justices of the Inferior Court of Common Pleas.

Valentine H. Peters, Samuel Scovil, John Colwell, John Golding, Richard Yeamans, Abiather Camp, Stephen Golding, William Foshay, Thomas Underhill, Thomas T. Hewlett, John Earle, John Humphrey, (*of the Quorum*), and Charles Harrison, Esquires, Justices of the Peace.

Nathaniel Hubbard Deever, High Sheriff.

T. R. Wetmore, Esquire, Keeper of the Rolls, and Clerk of the Peace and Inferior Court of Common Pleas.

Valentine H. Peters, Esquire, Register of Deeds and Wills.

Thomas Gilbert, John Earle, and Thomas T. Hewlett, Esquires, Coroners.

Timothy R. Wetmore, and Nathaniel Deever, Esquires, Trustees of the Grammar School.

Valentine H. Peters, and Samuel Scovil, Esquires, Commissioners for taking Bail in the Supreme Court.—Valentine H. Peters, Samuel Scovil, and T. R. Wetmore, Esquires, Commissioners for taking Affidavits in the Supreme Court.

Samuel Scovil, Harry Peters, John Colwell, Stephen Golding, William Foshay, Thomas Underhill, Thomas T. Hewlett, John Earle, and John Humphrey, Esquires, Commissioners for Solemnizing Marriage.

Nathaniel Hubbard, Esquire, Licensed Auctioneer.

COUNTY OF SUNBURY.

David Burpe, Thomas O. Miles, and Theodore V. W. Clowes, Esquires, Justices of the Inferior Court of Common Pleas.

David Burpe, Thomas O. Miles, Theodore V. W. Clowes, Isaac Hubbard, Clapham Smith, Stephen Peabody, Charles F. Street, Nathaniel Hubbard, James Tilley, George Hayward, Charles Hazen, (of the *Quorum*,) and William Hoyt, Esquires, Justices of the Peace.

John Hazen, Esquire, High Sheriff.

George F. S. Berton, Esquire, Keeper of the Rolls, and Clerk of the Peace, and Inferior Court of Common Pleas.

Nathaniel Hubbard, Esquire, Register of Deeds and Wills.

James Hazen, George B. Covert, and Enoch Barker, Esquires, Coroners.

Isaac Hubbard, Elijah Miles, David Burpe, and Henry T. Partelow, Esquires, Commissioners for taking Bail in the Supreme Court.

Isaac Hubbard, Elijah Miles, David Burpe, George W. Cleary, and Henry T. Partelow, Esquires, Commissioners for taking Affidavits in the Supreme Court.

David Burpe, Thomas O. Miles, John Hazen, and Stephen Peabody, Esquires, Commissioners for Solemnizing Marriage.

COUNTY OF KENT.

John Wheaton, Samuel M'Kean, and George Pagan, Esquires, Justices of the Inferior Court of Common Pleas.

John Wheaton, Samuel M'Kean, George Pagan, George Thompson, Thomas Ostle, John Jardine, John Bowser, William Hannington, (of the *Quorum*,) and Thomas Powell, Esquires, Justices of the Peace.

Thomas Lansdowne, Esquire, High Sheriff.

John Wesley Weldon, Esquires, Keeper of the Rolls, and Clerk of the Peace, and Inferior Court of Common Pleas.

Sylvester C. Hewes, James Long, and George Pagan, Esquires, Coroners.

John W. Weldon, and William Chandler, Esquires, Commissioners for taking Affidavits to be read in the Supreme Court.

George Pagan, and John Wheaton, Esquires, Commissioners for taking Bail in the Supreme Court.

John Wheaton, John Jardine, John Bowser, and William Hannington, junior, Esquires, Commissioners for Solemnizing Marriage.

Michael Samuel, Licensed Auctioneer.

Per
art, an
mon F
Per
art, Jo
Flemi
Hunte
ry I. A
Quoru
Will
and In
John
mery,
R. I
Esquir
Dug
preme
Hug
James
H.

B. C
tices o
B. C
James
hlee, A
and Le
John
A. K
Peace
John
John
B. C
Ketchu
preme
Rich
preme
Rich
B. Wa
Rich

CIT

The
Benj
Horne
Peace

COUNTY OF GLOUCESTER.

Perry Dumaresq, Robert Ferguson, John Montgomery, Dugald Stewart, and Joseph Read, Esquires, Justices of the Inferior Court of Common Pleas.

Perry Dumaresq, Robert Ferguson, John Montgomery, Dugald Stewart, Joseph Read, John Miller, James Blackhall, Adam Ferguson, Wm. Fleming, Benjamin Dawson, John Young, Harvey Adams, Andrew Hunter, William Napier, Henry W. Baldwin, Charles Coughlan, Perry I. A. Dumaresq, John Richey, John Doran, John Duncan, (*of the Quorum*), and Robert Robinson, Esquires, Justices of the Peace.

William End, Esquire, Keeper of the Rolls, and Clerk of the Peace and Inferior Court of Common Pleas.

John Anderson, Joseph Read, John F. Wheeler, and Hugh Montgomery, Esquires, Coroners.

R. H. Peters, Andrew Barbarie, Richard Carman, and B. Dawson, Esquires, Commissioners for taking Affidavits in the Supreme Court.

Dugald Stewart, Esquire, Commissioner for taking Bail in the Supreme Court.

Hugh Munroe, Perry Dumaresq, Robert Ferguson, John Young, and James Blackhall, Esquires, Commissioners for solemnizing Marriage.

H. W. Baldwin, Esquire, Licensed Auctioneer.

COUNTY OF CARLETON.

B. C. Beardsley, John Bedell, and Richard Ketchum, Esquires, Justices of the Inferior Court of Common Pleas.

B. C. Beardsley, John Bedell, Richard Ketchum, James Upham, James A. MacLaughlan, George Morehouse, Josiah Brown, John Diblee, Adam Sharpe, Arthur B. Walsh, Francis Rice, (*of the Quorum*), and Leonard R. Coombes, Esquires, Justices of the Peace.

John F. Winslow, Esquire, High Sheriff.

A. K. S. Wetmore, Esquire, Keeper of the Rolls, and Clerk of the Peace and Inferior Court of Common Pleas.

John Bedell, Esquire, Register of Deeds and Wills.

John Bedell, junior, and Hilkiah Kearney, Esquires, Coroners.

B. C. Beardsley, E. B. Smith, Nathaniel M. Hazen, and Richard Ketchum, Esquires, Commissioners for taking Affidavits in the Supreme Court.

Richard Ketchum, Esquire, Commissioner for taking Bail in the Supreme Court.

Richard Ketchum, George Morehouse, Josiah Browne, and Arthur B. Walsh, Esquires, Commissioners for solemnizing Marriage.

Richard English, and Jeremiah M. Connell, Licensed Auctioneers.

CITY AND COUNTY OF SAINT JOHN.

The Mayor and the Recorder, Justices of the Mayor's Court.

Benjamin Stanton, Daniel Ansley, Thomas Harding, Gregory Van Horne, William Olive, and George Bond, Esquires, Justices of the Peace and of the Quorum

John Ward, William Scovil, James Peters, Thomas Millidge, Ralph M. Jarvis, Charles Simonds, G. C. Carman, Zalmon Wheeler, John Jordan, Allan Otty, George Anderson, James Moran, Hugh Johnston, Henry Gilbert, Robert W. Crookshank, senior, Noah Disbrow, senior, Robert Ellis, Robert Payne, Archibald Mcnzies, George Brown, James Hendricks, Nehemiah Merritt, Stephen Wiggins, Ezekiel Barlow, Robert Rankin, Charles Ward, John Robertson, William H. Street, and George D. Robinson, Esquires, Justices of the Peace.

James White, Esq. High Sheriff.

Mr. Andrew Garrison, Deputy Sheriff.

James Peters, Junior, Esquire, Clerk of the Peace, &c.

James T. Hanford, Esquire, Coroner.

John C. Waterbery, Esquire, County Treasurer.

Charles Drury, Esquire, Register of Deeds and Wills.

Henry Swymmer, Esquire, Surrogate.

Honorable William Black, and Benjamin L. Peters, Esquire, Commissioners for taking Bail in the Supreme Court.

William B. Kinnear, Neville Parker, James Peters, junior, Henry Swymmer, Francis A. Kinnear, Robert F. Hazen, Le Baron Hazen, William Wright, H. N. H. Lugin, John M. Robinson, M. H. Perley, Robert L. Hazen, Richard Sands, jr. John Johnston, James William Boyd, and Judah H. Harit, Esquires, Commissioners for taking Affidavits in the Supreme Court.

Gerhardus C. Carman, John Jordan, and James Moran, Commissioners for Solemnizing Marriage.

BOARD OF HEALTH.

Benjamin L. Peters, (*Chairman*,) Benjamin Stanton, Daniel Ansley, Thomas Harding, Gregory VanHorne, George Bond, Thomas Barlow, John R. Partelow, (*Secretary*,) Henry Gilbert, Allan Otty, Robert Rankin, Robert Payne, William B. Kinnear, Robert Parker, William Olive, Rev. Dr. Gray, Rev. Robert Wilson, Rev. James Dunphy, Charles Ward, Isaac Woodward, James Hendricks, M. H. Perley, Charles Simonds.

COURTS OF NISI PRIUS.

TERMS:—*City and County of Saint John.*—2d Tuesday in January, and 3d Tuesday in June.

KING'S—4th Tuesday in January.

SUNBURY—3d Tuesday in February.

QUEEN'S—4th Tuesday in February.

CHARLOTTE—1st Tuesday in August.

KENT—Last Tuesday in August.

WESTMORLAND—1st Tuesday in September.

NORTHUMBERLAND—2d Tuesday in September.

GLOUCESTER—Monday before the 1st Tuesday in September.

CARLETON—

Terms

SAINT J
tember

YORK—
Comm
Octob

WESTM
Additi
and Se

CHARLO
Additi
cember

KING'S
of the

QUEEN'
Terms

SUNBUR
the Co
tober.

NORTHU
tional
vember

KENT—
Comm

GLOUCE
ditiona
vember

CARLETON
the Co

JOHN H

Charles I
B. Ph
F. Car
T. Armst
Gideon K
Thomas K

Terms of the Sittings of the Court of General Sessions and Inferior Court of Common Pleas.

SAINT JOHN—3d Tuesday in March, and 1st Tuesday in June, September, and December.

YORK—2d Tuesday in January and June.—Additional Terms of the Common Pleas—Third Tuesday in March, and second Tuesday in October.

WESTMORLAND—3d Tuesday in June, and 2d Tuesday in December.—Additional Terms of the Common Pleas—3d Tuesday in November and September.

CHARLOTTE—2d Tuesday in April, and 3d Tuesday in September.—Additional Terms of the Common Pleas—2d Tuesday in July and December.

KING'S COUNTY—1st Tuesday in March and July.—Additional Terms of the Common Pleas—1st Tuesday in May and November.

QUEEN'S COUNTY—4th Tuesday in January and June.—Additional Terms of the Common Pleas—4th Tuesday in April and October.

SUNBURY—3d Tuesday in January and June. Additional Terms of the Common Pleas—4th Tuesday in March, and 3d Tuesday in October.

NORTHUMBERLAND—First Tuesday in March and August. Additional Terms of the Common Pleas—First Tuesday in June and November.

KENT—3d Tuesday in January and June. Additional Terms of the Common Pleas—1st Tuesday in April and September.

GLOUCESTER—2d Tuesday in January and last Tuesday in July. Additional Terms of the Common Pleas—2d Tuesday in July and November.

CARLETON—1st Tuesday in January and June. Additional Terms of the Common Pleas—1st Tuesday in March and October.

POST OFFICE DEPARTMENT.

JOHN HOWE, junior, Esquire, Deputy Postmaster General for Nova Scotia and New-Brunswick.

POSTMASTERS IN NEW-BRUNSWICK.

Charles Drury, Esq. St. John.
B. Phair, Esq. Fredericton.
F. Campbell, Esq. St Andrews.
T. Armstrong, Esq. St. Stephen.
Gideon Knight, Esq. St. George.
Thomas Keillop, Esq. Dorchester.

A. S. Gore, Esq. Peticodiac Bend.
James Caie, Esq. Miramichi.
Asa Davidson, Esq. Kingston.
John C. Vail, Esq. Sussex Vale.
Jno. W. Weldon, Esq. Richibucto.
T. M. De Blois, Esq. Bathurst.

CITY OF SAINT JOHN.

Benjamin L. Peters, Esquire, Mayor.

William B. Kinnear, Esquire, Recorder.

ALDERMEN :
Benjamin Stanton,
Daniel Ansley,
Thomas Harding,
Gregory VanHorne,
William Olive,
George Bond,

Esquires.

ASSISTANTS.
Mr. John Knollin,

John Hooper,
Ewen Cameron,
William H. Craft,
Edward Toole,

WARDS.
King's.
Queen's.
Duke's.
Sydney.
Guy's.
Brook's.

John R. Partelow, Esquire, Treasurer or Chamberlain.

James Peters, Junior, Esquire, Common Clerk.

James William Boyd, Esquire, Deputy Common Clerk,

Joshua Bunting, High Constable.—Edward Bennison, Lewis Fairweather, and John Ketchum, Marshals.

Joshua Bunting, Robert W. Nowlan, Ebenezer Herrington, Benjamin Herrington, Adam Graham, John Ketchum, Robert M'Elvey, Lewis Fairweather, Edward Bennison, Leonard Woodworth, William Fearerby, William Nixon, William Colwell, Joseph Coram, William Aikins, Alexander Moody, and John Bell, Constables.

Roland Bunting, and William Aikins, Hog Reeves on the Eastern side of the Harbour.

David W. Craft, Hog Reeve at Carleton.

Ezekiel Barlow, John Ward, William Leavitt, Thomas Rawleigh, Nehemiah Merriitt, Isaac Woodward, George A. Nagel, Lewis Burns, and Ambrose S. Perkins, Port Wardens.

Benjamin Smith, Samuel Strange, William Leavitt, George Bragg, and William Wetmore, Assessors of Taxes and of Statute Labour.

John Wishart, James Keator, and N. Smith Demill, Assessors of Nightly Watch Tax.

Thomas Baldwin, Collector of Taxes.

William Miller, Collector of Taxes at Carleton.

Thomas Baldwin, Collector of Statute Labour.

William Miller, ditto ditto at Carleton.

Robert James, Inspector of Cord Wood and Bark in the Market Slip.

Ezekiel Jordan, Collector of slippage & wharfage at the Market Slip.

John Walker, Collector of slippage and wharfage at Union Street.—S. Gerow, ditto at North Slip—William Andrews, ditto at Lower Corner.

Seth Seely and Alexander M'Kenzie, measurers of coals.

Seth Seely, measurer of grain and salt.

Stephen Gerow, weigh-master at the North slip. Kenneth M'Kenzie, ditto at Union-street.

Thomas Coram, collector of wharfage at the Breakwater.

Thomas Coram, collector of Anchorage.

William Andrews, collector of wharfage at the Lower Cove.

Thomas Robson, Harbour Master.

Charles Whitney, City Gauger.

Joshua Bunting, Fence Viewer.

Robert C. Minette, City Surveyor.

Messrs. John Kerr, Ratchford & Lugin, John V. Thurgar, J. & H. Kinnear, John Robertsou James T. Hanford, Thomas L. Nicholson, Charles B. Cox, and Charles Shiels, Licensed Auctioneers.

John Boyd, M D, Henry Cook, John Paddock, and George J. Harding, M D, Esquires, Visiting Physicians.

James Reed, John Wightman, John Leavitt, John Reed, John S. Anthony, George Thomas, John Murray, John Woodley, Daniel Hntfield, Alexander Mills, Abraham Beattey, John Leavitt, junior, William Seely, Edward Murray, William Leavitt, James Reed, jun. John Spears, and Price Thomas, Branch Pilots.

James Reed, Keeper of the Partridge Island Light House.

George Lane, Keeper of the Beacon Light House.

Robert W. Nowlan, Looker after Nuisances.

Robert W. Nowlan, Pound Keeper,—David W. Craft and Joseph Coram, Pound Keepers at Carleton.

Samuel Jordan, Alexander M'Grotty, Benjamin Gale, Thomas Trafton, Robert C. Frost, John G. Tobin, W. O. Cody, Jacob Snider, Joseph Fayerweather, John M. Campbell, John Sherrard, Robert L. Harris, David Whiting, John Jordan, William W. Jordan, Oliver Byram, Ewen Cameron, George Cassie, and Lloyd Johnston, Surveyors of Lumber.

William Barlow, Charles Kay, James Brown, John Vallely, and Thomas Miles, Inspectors of lathwood, staves, hoop-poles, &c.

George Waterbery, Culler of Dried Fish.

William Dunham, James Bowen, Charles Kay, William Barlow, Cornelius Nice, Samuel Strange, James Peacock, James F. Lilly, Henry N. Nice, Thomas Miles, and James T. Britain, Inspectors of Pickled Fish.

Fyler Dibblee, Chief Engineer of Fire Engines.

Fyler Dibblee, Superintendent of Carts.

Thomas Sandall, Gilbert T. Ray, and Thomas Lockey, Overseers of the Poor. James Nisbet, Keeper of the Alms House.

Robert F. Hazen, Moses H. Perley, and George Bond, Trustees of Schools.

Julia O'Connor, James Johnston, and John Anning, Licensed Pawn Brokers.

Daniel Ansley, John Ward, junior, Thomas Harding, John R. Partew, Thomas Sandall, Gregory Van Horne, Robert Robertson, A. S. Perkins, George Harding, Thomas Barlow, James T. Hanford, George Bond, James F. Lilly, John Kinnear, Isaac Woodward, William Mul-lin, John V. Thurgar, and John Cunningham, Firewardens.

CITY OF SAINT JOHN SAVINGS' BANK.

His Excellency the Lieutenant Governor, Patron.

Honorable Ward Chipman, }
" William Black, } Vice-Presidents.
Hugh Johnston, Esquire, }

The Bank of New-Brunswick, Treasurer.

Daniel Jordan, Esquire, Cashier and Register.

CHAMBER OF COMMERCE.

William Walker, Esquire, President.

James Kirk, Esquire, }
John Robertson, Esq. } Deputy Chairmen,

Isaac Woodward, junior, Esquire, Secretary and Treasurer.

William Leavitt, John V. Thurgar, James T. Hanford, Elisha De W. Ratchford, and Angus M'Kenzie, Esquires, Ordinary Members of the Committee.

The above Gentlemen, together with the Members of the House of Assembly for the City and County (being the non-elective part) compose the Committee for the ensuing year.

PUBLIC GRAMMAR SCHOOL IN THE CITY OF SAINT JOHN.

President—The Reverend the Rector of Saint John.

DIRECTORS :

The Mayor,	Reverend I. W. D. Gray,
The Recorder,	Neville Parker, Esquire,
The Honorable Ward Chipman,	Reverend Robert Wilson, A. M.
The Honorable Robert Parker,	Thomas Paddock, Esquire, M. D.
The Honorable William Black,	

Treasurer and Clerk—William Wright, Esquire.

Principal—Mr. James Paterson.

Classical Usher—Mr. Simon Fraser.

English Teacher—Mr. William Ewing.

The Branches taught in this Seminary are Latin, Greek, Mathematics, Geography, the Use of the Globes, Writing, Arithmetic, and Elocution. The Pupils of the senior classes have, besides, daily exercises in Composition, to initiate them into the knowledge of English Grammar and the correct and elegant use of their native tongue.

SAINT JOHN CHURCH OF ENGLAND SUNDAY SCHOOL.

Patron—His Excellency the Lieutenant Governor.

President—The Rector of Saint John.

Superintendent and Secretary—The Curate of Saint John.

Directors—The Church Wardens.

BANK.

SAINT JOHN DISTRICT COMMITTEE OF THE SOCIETY FOR PROMOTING CHRISTIAN KNOWLEDGE.

President—Reverend Benjamin G. Gray, D. D.
Vice-Presidents—Hon. Chief Justice Chipman, Hon. William
Black, and William Scovil, Esq.
Treasurer—Zalmon Wheeler, Esquire.
Secretary—Reverend I. W. D. Gray.
Assistant-Secretary—Mr. A. R. Truro.
Standing Committee—R. W. Crookshank, Esquire, and Mr. A.
R. Truro.

Terms of admission :—One Guinea donation, and one Guinea annually.
Recommendation from a Member of the Society.

☞ The depository of Books and Tracts is at Mr. Truro's Circula-
ting Library, North side of the Market-Square.



SAINT JOHN SOCIETY LIBRARY.

Treasurer.
Elisha De W.
Members of the
the House of
re part) com-

William Scovil, Esquire, President.
James White, Esquire, Vice-President.
Thomas Millidge, and Geo. D. Robinson, Esquires, Committee.
Robert F. Hazen, Esquire, Secretary and Treasurer.
Mr. Anthony R. Truro, Librarian.

☞ Library hours from Twelve to One o'clock, every day.



THE PHILHARMONIC SOCIETY,

SAINT JOHN.
n.

*for the encouragement of one of the most delightful bran-
ches of the Fine Arts.*

ray;
ire,
son, A. M.
quire, M. D.

James William Boyd, Esquire—President.
Andrew Garrison, Esquire—Vice-President.
Mr. Thomas M'Avitty—Secretary and Treasurer.
Mr. Arthur Corry—Conductor.

THE MUSICAL SOCIETY.

k, Mathema-
c, and Elocu-
y exercises in
ish Grammar

Daniel Jordan, Esquire, President.
James William Boyd, Esquire, Vice-President.
Oliver Goldsmith, Esquire, Secretary and Treasurer.
Mr. Corry, Conductor.

SAINT GEORGE'S SOCIETY.

Robert F. Hazen, Esquire, President.
John V. Thurgar, Esquire, Vice-President.
Thomas Sandall, Esquire, Treasurer.
Mr. Anthony R. Truro, Secretary.

SAINT ANDREW'S SOCIETY.

SCHOOL

John Boyd, Esquire, M. D. President.
John Robertson, Esquire, Vice-President.
John Wishart, Esquire, Treasurer.
Peter Duff, Esquire, Secretary.

SAINT PATRICK'S SOCIETY.

John Kinnear, Esquire, President.
William M'Cannon, Esquire, Vice-President.
William Hutchinson, Esquire, Treasurer.
Mr. Samuel Thompson, Secretary.
Mr. John Hastings, Assistant ditto.

ALBION SOCIETY.

Mr. George Bragg, President.
Mr. William Scammell, } Vice-President.
Mr. C. H. Grocock, }
Mr. Henry Buxton, Treasurer.
Mr. George Thomas, Secretary.

BRITISH AMERICAN SOCIETY.

John Ward, Esquire, President.
Stephen Humbert, } Esquires, Vice-Presidents.
George D. Robinson, }
Mr. Ambrose S. Perkins, Treasurer.
Mr. Stephen K. Foster, Secretary.

FRIENDLY SONS OF ERIN.

William Mullin, Esquire, President.
Mr. Joseph M'Pherson, Vice-President.
Mr. James Gilday, Treasurer.
Mr. John Gallivan, Secretary.

TEMPERANCE SOCIETY.

President—Reverend Benjamin G. Gray, D. D.
Vice-President—William B. Kinnear, Esquire.
Treasurer—Angus M'Kenzie, Esquire.
Secretary—Mr. George Blatch.

FRIENDLY FIRE CLUB.

Robert W. Crookshank, Esquire, President.
James Hendricks, Esquire Vice-President.
Thomas L. Nicholson, Esq. Secretary and Treasurer.

UNION FIRE CLUB.

Daniel Leavitt, Esquire, President.
Benjamin L. Peters, Esq. Vice-President.
John Wishart, Esquire, Treasurer.
Mr. S. K. Foster, Secretary.

PARISH OF PORTLAND.

William G. Cody, George Matthew, and James Gallagher, Commissioners of Highways.

Rob
of the
Robe
sors of
Hug
Taxes
Jame
ton, Cl
Ryan, C
Ephr
Bean, V
trick H
Morris
fish Mor
James
son, Pat
and Wil
Franc
W. H. A
Gilbert J
John M
Stevens
John Bro
Richard
Henry
of School
Barnes
Hugh S

James C
sioners of
John Gi
the Poor.
Isaac C
Taxes.
John H
Isaac C
chools.
John Du
William
John Du
William
William

PA
(do
Stephen
us of Hig
Joseph B
the Poor.

Robert Rankin, John C. Waterbery, and James Travis, Overseers of the Poor.

Robert Rankin, Robert Payne, Esquires, and James Travis, Assessors of Taxes.

Hugh Sharkey, Charles Quigley, and John Johnston, Collectors of Taxes

James Stephenson, Junr. Robert Bowes, John Robinson, John Dalton, Charles Quigley, Junr. James Burley, James Johnston, and Hugh Ryan, Constables.

Ephraim Sentill, Thomas McFaddin, William Paterson, Thomas Bean, William Robertson, Thomas Garnett, William Benn, Sen. Patrick Harrigan, Winthrop Robinson, Thomas Long, James S. Smith, Morris Whooten, Henry Graham, John Morrison, Wm. Daley, Griffith Morrison, John Rynn and James McNinch, Fence Viewers.

James Burley, Michael Campbell, Edward Hughes, James Stevenson, Patrick Harrigan, Robert Bowes, Hugh Dunn, William Scott, and William Bell, Pound Keepers.

Francis Jordan, Samuel Reynolds, Jeremiah Gove, John W. Scott, W. H. A. Keane, David Roberts, Michael Fisher, John Morrison, Gilbert Jordan, Junr. Thomas Gillespie, Surveyors of Lumber.

John Moore, John Robinson, James Stevenson, James Burley, James Stevenson, Junr. Edward Hughes, Robert Bowes, Matthew S. Manks, John Broughfield, Edward Davis, William Moyes, John Dalton, and Richard Ritchie, Hog Reeves.

Henry Gilbert, John Jordan, and Robert Payne, Esquires, Trustees of Schools.

Barnes Travis, Superintendent of Ferry Landing.

Hugh Sharkey, Town Clerk, and Clerk of the Market.



PARISH OF LANCASTER.

James Olive, Calvin L. Hatheway, and George Vaughan, Commissioners of Highways.

John Gillies, William Tilton, and Daniel Brundage, Overseers of the Poor.

Isaac Clarke, James Olive, and Calvin L. Hatheway, Assessors of Taxes.

John Harding, Collector of Taxes.

Isaac Clarke, John Gillies, and Calvin L. Hatheway, Trustees of Schools.

John Dunham, John Kell, and Isaac Finnemore, Constables.

William Tilton, John Vaughan, and Charles Lord, Fence Viewers.

John Dunham, Maurice Casey, and John Perry, Hog Reeves.

William Tilton and John Harding, Pound keepers.

William Wilson, Town Clerk, and Clerk of the Market.



PARISH OF SAINT MARTINS.

Stephen Mosher, Thomas Stevens, and James McLean, Commissioners of Highways.

Joseph Brown, Simon Vaughan, and Thomas Stevens, Overseers of the Poor.

Joseph Brown, Allan M'Lean, and George Marrs, Trustees of Schools.

Stephen Mosher, Thomas Stevens, and James M'Lean, Assessors of Taxes.

Daniel Brown, Collector of Taxes.

George Marrs, Surveyor of Lumber.

Daniel Brown, senior, William Sharp, and James Johnston, Constables.

Daniel Brown, and William Sharp, Fence Viewers.

George V. Marsters, Pound Keeper.

George Marsters, Town Clerk, and Clerk of the Market.

ROADS.

*From St. John to Fredericton,
by the Nerepis.*

	Miles.
Harding's, (Yorkshire tavern,)	4
Brundage's,	10
Mather's (Douglas Arms,)	4
Purdy's, (late J. O. Betts')	12
Darby Gillan's,	10
W. Smith's,	7
Morrison's (Orმოcto,)	7
Fredericton,	11

Total,—65

*St. John to Fredericton, on the
Eastern side of the river.*

To Black's farm,	7
Gondola Point,	9
Kingston,	4
Head of Bellisle,	14
Washademoac,	13
Jemseg Ferry,	6
Tilley's, (Sheffield,)	13
Widow Perley's,	8
Fredericton,	12

Total,—86

St. John to St. Andrews.

To Robertson's,	5
Tilton's, Musquash,	10½
M'Laughlin's,	6
Gray's,	5
M'Gowan's, (half way,)	6½
Watters'	3
Shaw's, (Magaguadavic,)	9
Burns', (St. Patrick,)	10
Turner's	3
St. Andrews,	9

Total,—67

St. John to Sussex Vale.

To Fearerby's,	8
Beatty's,	6½
Hampton Ferry,	10
Hayes',	5½
Finger Board, Norton,	4½
Mill Stream, Lyon's,	7
Sussex Vale,	6

Total,—47½

Saint John to Amherst, N. S.

St. John to Hennigar's,	9
Hennigar's to Wetmore's,	3
Wetmore's to Ketchum's,	4
Ketchum's to Hampton Ferry,	7
Hampton Ferry to Hayes's,	5½
Hayes's to Baxter's, (Finger Board,)	4½
Baxter's to Roache's,	10
Roache's to Cougle's,	3

To Sussex Vale, 46

Cogle's to Walter's, (foot of the Mountain,)	13
Walter's to Leek's,	5
Leek's to Holstead's,	7
Holstead's to Russell's,	10
Russell's to Lewis's,	15

To the Bend of Peticodiac, 96

Lewis's to Charter's, (Mem. ramcook,)	15
Charter's to Weldon's, (Dorchester,)	8
Weldon's to Bass's (Westcock)	9
Bass's to Wells's, (Tantamar,)	8
Wells's to Bent's, (Amherst,)	10

Total,—146

Bend of Petieodioc to Richibucto.

	Miles.
Lewis's to Smith's, Shediac,	15
Smith's to Lannan's,	1
Lannan's to Long's, Cocaigne,	8
Long's to Smith's, Buctouche,	10
Smith's to M'Dermott's, Big Buctouche,	7
M'Dermott's to Harris's,	7
Harris's to Donnelly's,	8
Total,	50

Richibucto to Miramichi.

Donnelly's to Rankin's,	12
Rankin's to Dickens's, Bay de Vin,	10½
Dickens's to M'Beath's, Black River,	11½
M'Beath's to Johnston's Chatham,	6
Total,	40

Miramichi to Bathurst, (Bay Chaleur.)

Chatham to Goodfellow's, across the Miramichi,	6
Goodfellow's to Curry's,	12
Curry's to Forane's, (half way house),	15
Forane's to Dempster's,	8½
Dempster's to Busted's,	9½
Total,	51

Fredericton to Miramichi.

To S. Miller's,	11
Miller's to Young's,	9
Young's to M'Leod's,	6
M'Leod's to Craig's,	13
Craig's to Boice's,	7
Boice's to Wilson's,	7
Wilson's to Hunter's,	7
Hunter's to Moore's,	6
Moore's to Fowler's,	12
Fowler's to Cochrane's,	10
Cochrane's to Astle's,	8
Astle's to Parkers,	8
Parker's to the Court House,	8
Total,	108

order, after passing Grand Manan, placed on the N. E. extremity of the inner Bay of Passamaquoddy; it is this projecting Head Land, two miles above the other, and distant 18 feet from the point of the Compass, where they have been established upwards of forty

Light, at the entrance of the River

Island, and upon a spit or bar, S. E. of Sand Point, and which Beacon Tower. Upon this Tower a very useful to the coasting trade of having Pilots on board, as it enables them to see the light.

American Light, and is placed on the St. Croix by Lubec and Eastport; erected here, and the light much im-

the St. Croix Island, were put into operation.

From Amherst to Halifax.

To Hewson's, River Philip,	20
Clark's, foot of Cob mountains,	15
Gourley's, Onslow,	20
Witter's & Blanchard's, Truro,	5
Corbett's, Gay's River,	26
Shultz's,	15½
Fultz's,	11
Halifax,	11½
Total,	124

Digby to Halifax.

To Annapolis,	20
Bridgetown,	15
Walt's, (Kentville),	43
Graham's, (Nortou),	6
Windsor,	20
Halifax,	45
Total,	149

Digby to Shelburne.

Journey's, Sissiboo,	23
Richan's, Yarmouth,	41
Kendrick's, Barrington,	46
Hargraves, Shelburne,	27
Total,	137

HOUSES.

Joseph Brown, Allan McLean,
Schools.

Stephen Mosher, Thomas Stevens,
Taxes.

Daniel Brown, Collector of Taxes.

George Marrs, Surveyor of Lumb.

Daniel Brown, senior, William
stables.

Daniel Brown, and William Shar

George V. Marsters, Pound Keep

George Marsters, Town Clerk,

at Houses in the Bay of Fundy :
Thomas Barlow, John Ward,
aldson, Esquires.

bridge Island and the Beacon
d, and L. Donaldson, Esq's.

— The first Light in approaching the
point of the Seal Island. This Light
high water mark, and may be seen in

ROA

point of the Compass. A very danger-
which the sea always breaks, called
miles S. S. W. by Compass, from the
and the Island there are some dan-
ghout, and large vessels, therefore,
een them.

uing up the Bay, the next Light is
a mile N. E. from the N. W. Point
and Lamp. This Light will there-
trade of the Bay than formerly.

next Light on the coast of Nova-
of the Gut of Annapolis—from Brier
ast is very bold, and not indented: the
as a guide into Annapolis Basin.

From St. John to Fredericton,
by the Nerepis. Miles.

Harding's, (Yorkshire tavern,) 4

Brundage's, 10

Mather's (Douglas Arms,) 4

Purdy's, (late J. O. Betts') 12

Darby Gillan's, 10

W. Smith's, 7

Morrison's (Oromocto,) 7

Fredericton, 11

Total.—65

Gannet Rock Light.—This Light bears from the Light on Brier
Island, N. W. $\frac{1}{2}$ W. 21 miles. Is intended to warn vessels of their
approach to a very dangerous range of shoals and ledges, which extend
from the Old Proprietor to the Seal Island off Machias, a distance of
about 20 miles.

Bearings from the Gannet Rock Light House :

To the Old Proprietor, which dries at $\frac{1}{2}$ ebb, (very dangerous) E. by N.
 $\frac{1}{4}$ N. 7 miles.

„ Black Rock, (always above water 25 feet,) off White Head,
N. E. $\frac{1}{4}$ E.

„ South West Head of Grand Manan, N. W. $\frac{1}{2}$ N.

„ Northernmost of the Murr Ledges, (dry at two-thirds ebb,) N. W.
by W. $\frac{1}{4}$ W.

„ Southernmost of ditto, called St. Mary's Ledge, (always out of
water,) S. W. by W. $\frac{1}{2}$ W.

„ Machias Seal Island Lights, distant about 13 miles, W. by N.
 $\frac{1}{4}$ N.

NOTE.—Between the northernmost and southernmost of the Murr
Ledges, there is a range of dangerous rocks and shoals, many of them
always above water, and which extend westward from the Light House
about 4 miles; from this range, farther westerly, about 3 miles, lies a
dangerous breaker, called the Roaring Bull. This may be avoided by
keeping three remarkable headlands, near the S. W. end of Grand
Manan, open.—The red glass having been removed from the lantern,
this is now a flash light.

Head Harbour Light.—Next in order, after passing Grand Manan, is Head Harbour Light. This is placed on the N. E. extremity of Campo Bello, and is a guide to vessels entering the main channel to West Isles, Moose Island, and the inner Bay of Passamaquoddy; it enables vessels also at all times to enter Head Harbour.

Point Le Preau Lights.—Upon this projecting Head Land, two Lights have lately been placed, one above the other, and distant 18 feet. Both lights can be seen from every point of the Compass, where they may be useful.

Partridge Island Light.—This Light, at the entrance of the River and Harbour of Saint John, having been established upwards of forty years, requires no particular notice.

Beacon Light.—Within Partridge Island, and upon a spit or bar, which extends about half a mile S. S. E. of Sand Point, and which dries at two-thirds ebb, stands the Beacon Tower. Upon this Tower a Light is established, which is eminently useful to the coasting trade of St. John, and to all other vessels having Pilots on board, as it enables them to enter the Harbour at all hours of the night.

West Quoddy Light.—This is an American Light, and is placed on the West side of the entrance into the St. Croix by Lubec and Eastport; a new light house has lately been erected here, and the light much improved.

The fixed Lights, upon the Machias Seal Island, were put into operation in October, 1832—they are elevated about 45 feet above high water, and bear from each other E. S. E. and W. N. W. distant about 200 feet, by which they will be immediately distinguished from all other lights upon the coast, (British or American)—the following are bearings from them, viz :—

- To the Southernmost Murr Ledge, (St. Mary's,) E. S. E. easterly.
- „ Gannet Rock Light, E. by S. $\frac{1}{4}$ S. 13 miles.
- „ Southern Head of Grand Manan, E. by N. $\frac{1}{4}$ N.
- „ Northern ditto, N. E. $\frac{1}{4}$ E.
- „ N. E. Rock, distant 2 miles, N. E. by N.
- „ Little River Head, N. by W.
- „ Libby Island Light House (American,) N. W. by W.

Vessels in standing in to the Northward, between these Lights and the Gannet Rock, should tack or haul off the moment they bring these lights in one, as they will then not be more than three-fourths of a mile from the Murr Ledges, if more than 5 miles to the E. of the lights.

CAPE BRETON.—A Light House was erected on Low Point,—the Eastern point of the entrance of Sydney Harbour,—in October, 1832, with a fixed light.

A White Beacon has been erected on the East Head, leading into Louisbourg Harbour, upon the scite of the old French Light House—which may be seen at a very considerable distance.

NEWFOUNDLAND.—A Light is now exhibited from sunset to sunrise at Fort Amherst, on the south head of the entrance to St. John's.

STAFF OF THE ARMY,
SERVING IN THE PROVINCE OF NEW-BRUNSWICK,
UNDER THE COMMAND OF
Major-General Sir ARCHIBALD CAMPBELL, Baronet, G. C. B.

Captain J. Campbell, (38th Regt.) Aid-de-Camp.
Town-Major J. Gallagher, H. P. 98th Regiment.

GARRISONS.

Fredericton—The Hon. Lieut.-Colonel H. Fane, Commandant.
Saint John—Lieutenant-Colonel Turner, K. H. ditto.
Saint Andrews—Lieutenant Lax, 34th Regiment, ditto.

CHAPLAINS.

Fredericton—Venerable Archdeacon Coster, M. A.
Saint John—Reverend Benjamin G. Gray, D. D.
Saint Andrews—Rev. Jerome Alley, D. D.

COMMISSARIAT DEPARTMENT.

Geo. Swinhey, Esq. Deputy Assistant Commissary General (*in charge*).
Oliver Goldsmith, Esquire, Deputy Assistant Commissary General.

ORDNANCE DEPARTMENT.

F. C. Frith, Esquire, Deputy Ordnance Store Keeper.
Lieutenant S. Huyghue, 1st Clerk.
Mr. Robert Pickthall, 2d Clerk.
Mr. William Bond, Store House Man.
Mr. J. Thomas, Armourer.

J. E. Woolford, Esquire, Barrack Master, Fredericton.

ROYAL ENGINEER DEPARTMENT.

Major Slade, Commanding.
Mr. Lionel Anderson, Clerk.
Mr. Henry Hennigar, Overseer of Works.

BOARD OF RESPECTIVE OFFICERS.

Major Slade, Royal Engineers.
Captain Stanway, Royal Artillery.
Deputy Store Keeper Frith.

OFFICERS OF CORPS SERVING IN THE PROVINCE.

ROYAL ARTILLERY.

Captain Stanway, Commanding.
Lieutenant B. O. Lyster.

IN T

His Excell

Lieute

Lieute

The F

Major

L. A.

Lieute

The F

First

Lieuten

G. M. M.

L. B.

G. F. B.

G. F. B.

D. L. E.

84TH REGIMENT.

Lieutenant-Colonel the Hon. H. Fane, Commanding.

Major Airey,
Major M. Tew,

Captain Ruxton,
Captain Broderick,

Lieutenant John Elgee,
" N. R. Brown,
" W. Lax,
" Hosford,
" Matthews,
" Hammond,
" Norris,
" Markham,

Ensign Harvey,
" Heathcote.

Adjutant—Lieutenant Byron.
Assistant Surgeon—J. Hendrick.
Paymaster—G. Ledingham.
Quarter Master—W. Pepperall.

STAFF OF THE MILITIA, IN THE PROVINCE OF NEW-BRUNSWICK.

His Excellency Major-General Sir A. Campbell, Bart. G.C.B. Commander-in-Chief.

Lieutenant Colonel C. B. Turner, K.H. } Inspecting Field Officers.
Lieutenant Colonel John Allen,

The Honorable Lieutenant-Colonel George Shore, Adjutant General.

Major John Gallagher, Quarter Master General.

L. A. Wilmer, Esquire, Judge Advocate General, 6th August, 1834.

Lieutenant Colonel Charles Drury, Provincial Aid-de-Camp.

The Honorable Major G. F. Street, do. do.

YORK COUNTY MILITIA.

First Battalion.

Lieutenant Colonel.

G. M. M. 1st Jan. 1832

Major.

M. B. 1st Jan. '32

G. P. B. (art.) 17 Sep '33

Captains.

G. L. 1st Jan. '34

D. L. 24 Nov. '23

W. M. Beath, (ri) 30 Aug. '30
P. Fisher, 14th Sept. do
J. F. Taylor, 15th do do
G. E. Ketchum, 22 Aug '31
L. A. Wilmer, 23 do do
G. F. S. Berton, 12 Mar '32
Jas. Holbrook, 30 do do
A. K. S. Wetmore, (art.) 2d
capt. 17 Sept. '33
J. A. Beckwith, 17 do do

Lieutenants.

R. D. (art.) 6 Jan. '33
N. Walker, (Af.) 23 No. '23
T. Gardiner, (Af.) 29 do do
B. Wolhaupter, (r) 30 Au. '30
F. E. Beckwith, (r) 31 do do
W. N. Akerley, (r) 1 Sep do
W. Grosvenor, 15 do do
C. Murray, 18 do do
Asa Coy, 20 do do

Capt.

Cap't
R. Fulton, 12 March, '32
J. Gregory, 13 do do
W. S. Estey, 17 Sept. '33
J.S. Shore, art. 25 Aug '34
D. M'Leod, art. 3 Sep do
W. D. Hartt, 6 do do
W. Newham, 7 do do

Ensigns.

Lieut.
C.W. Marsh, (Af) 25 Nov '28
S. Barker, 24 do do
Geo. Woods, 25 do do
T. S. Wetmore, 12 Mar. '32
W. Segee, jun. 13 do do
John Simpson, 17 Sep. '33
Michael Fisher, 18 do do
B. Carroll, 6 Sep. '34
S. D. M'Pherson, 7 do do

Paymaster.

J. Taylor, (capt) 14 June, '24

Adjutant.

G.F.H. Minchin, c. 12 Sep. [1833]

Quartermaster.

A.C. Starritt, lt. 14 Mar. '32

Surgeon.

T. Emerson, 20 July, '19

Second Battalion.

Lieutenant Colonel.

J. Allen, (staff), 21 May, '24

Major.

W. Davidson, 3 Sep. 1834

Captains.

A. Yerxa, 19 Jan. 1818
V. Harding, 19 Aug. 1822
Geo. Long, 2 Feb. '23
W. C. Joslin, 3 do do
Jas. Hartley, 4 do do
John Grant, 5 do do
T. Jones, (affr.) 3 do do
J. Haggerman, 5 do do
Jas. Miles, 2 April, '22
Jno. Barker, 20 Sept. '30
Wm. Kitchen, 24 Sep. '32

J. Hammond, 6 Sept. '24
W. Davidson, 7 do do
D. Phillips, 8 do do

Lieutenants.

Enoch Dow, 5 Feb. '29
Jno. Yerxa, 3 July, '29
Jas. Jones, 4 do do
C. Morehouse, 7 July, '29
A. Hartt, 8 do do
A. Hammond, 9 do do
D. Parent, 10 do do
Jas. Tibbets, 11 do do
A. Moody, 12 do do
J. Campbell, 20 Sept. '30
Benj. Burt, 21 do do
George Fox, 24 Sept. '32
R. E. Barker, 6 Sep. '34
E. Garden, 7 do do
H. Jones, 8 do do
Thos. Parent, 9 do do

Ensigns.

D. Yerxa, Jr. 2 July, '29
Jas. Golder, 3 do do
D. Jewett, 4 do do
Jas. Cliff, 5 do do
Wm. Jones, 6 do do
J. Christy, 7 do do
T. Parent, 8 do do
J. Ingraham, jr. 9 do do
S. Cronkhite, 11 do do
D. Dow, 13 do do
P. Watson, 14 do do
B. Wheeler, 19 Sept. '30
R. Kilburn, 20 do do
Jno. Brewer, 22 do do
Janus Nelson, 25 Sep. '32
John C. Allen, 6 Sept. '34
B. Huestis, 7 do do
Joseph Allen, 8 do do
J. Ingraham, jr. 9 do do
Jacob M'Keen, 10 do do

Paymaster.

J. Allan, capt. 2 July '29

Adjutant.

A. Lawrence, cap. 20 Sep. '30

Surgeon.

W. Caverhill, 16 Apr. '22

Quartermaster.

D. Parent, (ens.) 3 July, '38

Third Battalion.

Lieutenant Colonel.

John Robinson, 1 Jan. 1832

Major.

Wm. Currie, 10 July, do

Captains.

Allan M'Lean, 20 July, '19
R. Currie, 12 Dec. '28
D. Hallett, 13 do do
G. Clements, 14 do do
L. Campbell, 15 do do
J. M'Gibbon, 12 June, '30

Lieutenants.

P. Campbell, 13 Dec. '22
H. Henley, 14 Dec. '22
D. J. Estey, 15 do do
G. Sterling, 17 do do
A. M'Lean, 12 June, '30
A. M'Gibbon, 10 July, '32

Ensigns.

W. Sterling, 14 Dec. '28
C. Nevers, 15 do do
D. Manson, 16 do do
Alex. Ross, 12 June, '30
Jacob Brown, 10 July, '32
G. R. Estey, 11 do do

Adjutant.

Quartermaster.

M. Pickard, lt. 15 Dec. '28

York County Cavalry
(Attached to 1st Batt.)

Captain.

W. Woodford, 22 Nov. '28

Lieutenants.

G. J. Dibblee 24 Nov. '28
W. H. Odell, 5 June, '32

Cornet.

St ph. Miller, 5 June, '32

Quartermaster.

I. W. Jouett, cor. 15 Dec. '28

SAINT JOHN CITY MILITIA

First Battalion.

Lieutenant Colonel.

C. Drury, stf. 25 Oct. 1824

Major.

B.L. Peters, maj. 25 Oct '24

lt. col. 8 Nov. '30

G.D. Robinson, aj. 19 Ap. '22

Captains.

T. Leavitt, af. 22 Aug. '25
T. Barlow, art. 9 Jan. '27
M. Hennigar, 30 Aug. '30
E. L. Jarvis, 30 Jan. '33
O. Drury, 31 do do
T. M' Mackin, 1 Feb. do
N. Disbrow, 2 do do
H.N.H. Lugin, 30 May do
W. Hutchinson, 31 do do

John Robertson, 20 Aug. '34
Peter Duff, 21 do do

First Lieutenants.

W.O. Smith, rif. 30 Jan. '33
W.D.W. Hubbard, 3 feb do
Geo. Hutchinson, 4 do do
C. H. Grocock, 5 do do
G. Waterbury, ar. 13 Ap. do
B. Ansley, (af.) 29 May do

Dough
James
W. H.
A. Ro
Wm. I
Seco
J.W.
Thos.
R. Ro

Lie
Chas.

G. Van
T. Merr
S. Smil
J.T. Ha
J.V. Th
A. Crook
W. Mul
N. J. B
C. W. T
John W
L
T.B. Mi
J. Hoop

Fin

G. Ander
li
A. Wedd
C
G.O. Car
A. Menzi
S. Dalton
R. Payne
Wm. Cra
Jno. Cunn
Jas. Ketch
D. Ansley
I. Flewel
T.L. Nich
I. Merritt
Jam's Pa
Lie

G. Clark,
D.L. Dyke
Chs. Ther
J. Ketchu
R. Carma
I. Steven
R. Jenkin
Jas. Bartle

attalion.
 Colonel.
 n, 1 Jan. 1832
 for.
 10 July, do
 rains.
 n, 20 July, '19
 12 Dec. '28
 13 do do
 14 do do
 15 do do
 12 June, '30
 enants.
 , 13 Dec. '22
 14 Dec. '22
 15 do do
 17 do do
 12 June, '30
 n, 10 July, '32
 signs.
 , 14 Dec. '28
 15 do do
 16 do do
 12 June, '30
 n, 10 July, '32
 y, 11 do do
 utant.
 ermaster.
 lt. 15 Dec. '28
 nty Cavalry
 (to 1st Batt.)
 ptain.
 rd, 22 Nov. '28
 tenants.
 ce 24 Nov. '28
 l, 5 June, '32
 rnet.
 er, 5 June, '32
 rmaster.
 cor. 15 Dec. '28
 on, 20 Aug '34
 21 do do
 tenants.
 rif, 30 Jan. '33
 bard, 3 feb do
 son, 4 do do
 ck, 5 do do
 ar. 13 Ap. do
 .) 29 May do

Douglas Clarke, 30 May '33
 James Gregg, 31 do do
 W. H. Scovill, 1 June do
 A. Robertson, 20 Aug '34
 Wm. Haggerty, 21 do do
 Second Lieutenants.
 J. W. McLeod, ri. 16 Jne. '28
 Thos. Nisbet, jr. 5 Ap. '33
 R. Robertson, 14 do do

C. J. Melick, 15 do do
 E. Ketchum, af. 29 May do
 John Sandall, 30 do do
 E. L. Thorne, 2 Sep. do
 Simon W. Cock, 8 do do
 Thos. S. Estey, 4 do do
 H. W. Peters, 6 Sept. '34
 J. W. Smith, 7 do do
 W. Robertson, 8 do do

Paymaster.
 J. Kirk, capt. 22 Aug. '25
 Adjutant.
 G. D. Robinson, c. 26 Mr. '27
 Quartermaster.
 E. J. Budd, 29 May, '33
 Surgeon.
 J. Boyd, M. D. 16 Sep. '23
 Enrolling Officer.
 T. Baldwin, cap. 21 Jul. '32

SAINT JOHN CITY RIFLE BATTALION.

Lieutenant-Colonel.
 Chas. Ward, 1 Jan. 1852
 Major.

Captains.
 G. Vanhorne, 5 Sept. '21
 T. Merritt, 1 July, '22
 S. Smith, 25 Aug. '23
 J. T. Hanford, 5 Dec. '24
 J. V. Thurgar, ri. 23 Sep. '26
 A. Crookshank, 15 Mar. '30
 W. Mullin, 5 Nov. '33
 N. J. Brown, 6 do do
 O. W. Tisdale, 7 Nov. '33
 John Wishart, 8 do do
 Lieutenants.
 T. B. Millidge, 17 Sep. '22
 J. Hooper, rif. 18 Mar. '29

E. W. Greenwood, 6 No '33
 J. Wetmore, 7 do do
 Robert Summers, 8 do do
 Charles Johnston, 9 do do
 B. F. Wallop, 10 do do
 George Merritt, 11 do do
 John L. Wilmet, 12 do do
 John C. Ward, 13 do do
 Ensigns.
 Chas. Gallagher, 5 Nov '33
 T. A. Wallace, 6 Nov. '33
 T. B. Wilson, 7 do do
 David McMillan, 8 do do
 James Nethery, 9 do do
 James Otty, 10 do do
 T. A. Sancton, 11 do do
 Paymaster.
 I. L. Bedell, cap 20 Sep. '27

Adjutant.
 W. H. Street, cap. 25 Se '32
 Quartermaster.
 H. Chubb, cap. 11 Sep. '21
 Surgeon.
 H. Cook, 20th Aug. '27
 Artillery Company.
 Captain.
 W. P. Ranney, 26 Apl. '34
 Lieutenants.
 Wm. Hughson, 5 Nov. '33
 N. W. Wallop, 26 Apl. '34
 F. A. Wiggins, 27 do do
 S. K. Foster, 28 do do

SAINT JOHN COUNTY REGIMENT.

Lieutenant Colonel Charles Simonds, Commanding.

First Battalion.

Majors.
 G. Anderson, maj. 27 Ap. '25
 Lieut. col. 8 Nov '30
 A. Wedderburn, 1 Jan. '26
 Captains.
 G. C. Carman, 21 June, 24
 A. Menzies, 8 Aug. do
 S. Dalton, 5 Apr. '25
 R. Payne, 17 May, do
 Wm. Craft, 11 June, do
 Jno. Cunnard, 17 Sep. '27
 Jas. Ketchum, 23 July, '28
 D. Ansley, 25 Oct. do
 I. Flewelling, 25 do do
 T. L. Nicholson, ar. 31 Au 30
 I. Merritt, 8 Oct. '33
 Jas. Payne, 1 Sept. '34
 Lieutenants.
 G. Clark, 11 June, '27
 D. L. Dykeman, 28 July, '28
 Chs. Theal, 29 July, '28
 J. Ketchum, 30 do do
 R. Carman, 26 Oct. '28
 L. Stevens, 27 do do
 R. Jenkins, af. 5 July, '30
 Jas. Bartlett, 30 Aug. do

W. H. Travis, 25 Oct. do
 T. Cunnard, 15 April, '33
 John Pollok, (att.—1st lt.)
 8 Oct. do
 Charles Simonds, (art. 2d
 lieut.) 9 Oct. do
 Wm. Ross, (art.—2d lieut.)
 10 Oct. do
 Wm. Craft, (r. 1st lt.) 11 do
 Wm. Parks, (r. 2d lt.) 12 do
 J. Quinton, (r. 2d lt.) 13 do
 F. Jordan, 14 do
 Robert Cunnard, 15 do
 D. H. Anderson, rif 1 Se 34
 J. F. Goddard, do 2 do do
 Hen. Ketchum, do 3 do do
 Nathan Godsoe, 4 do do
 Ensigns.
 G. Vaughan, 25 Oct. '28
 J. Beattie, af. 5 July, '30
 F. Hatheway, 30 Aug. '30
 H. Quinton, 31 do do
 J. Lingley, 15 April, '33
 John Ansley, 8 Oct. do
 — Flewelling, 9 do do
 W. Wetmore, 10 do do
 Adjutant.
 C. L. Hatheway, cp. 7 S. '21

Paymaster.
 G. Matthew, cap. 30 An. '30
 Surgeon.
 S. G. Hamilton, 30 Aug. '30
 Quartermaster.
 Wm. Scammell, (cap.) 16
 April, '33

Second Battalion.

Major.
 Jas. Moran, 12 June, 1830
 Captains.
 W. G. Cody, 23 Aug. '21
 Jehiel Partelow, 1 Sep. do
 John Jordan, 3 June. '22
 D. Vaughan, 22 do '24
 J. Cunningham, 25 Oct. 30
 Jno. Fownes, 16 Aug. '31
 W. M. Cannon, 17 do do
 Lieutenants.
 Thos. Bean, 31 Aug. '21
 E. Sentill, 3 June, '22
 A. Bradshaw, 1 July, do
 A. S. Hodge, 25 Oct. '28
 W. O. Cody, 25 Oct. do
 Wm. Veal, 15 Aug. '31
 Steph. Mosier, 16 do do

Thos. Fownes, 17 do do
James Stewart, 18 do do
Samuel Abbott, 19 do do
Wm. M'Naught, 8 Apl. '34
Ensigns.
H. Anthony, 22 Sept. 21
Jas. Swin, 20 July, '24

C.M. Wootton, 8 Apr. '25
W.R. Scntill, 25 Oct. '30
Geo. Masters, 15 Aug. '31
Philip Moser, 16 do do
J. Cunningham, 8 Apl. '34
Adjutant.
T.H. Black, cap 15 Aug. '31

Paymaster.
J.R. Partelow, c. 24 No. '26
Quartermaster.
T. Stevens, 30 Aug. '30
Surgeon.
G. J. Harding, 1 Jan. '32

SAINT JOHN SEA FENCIBLES.

Lieutenant-Colonel A. Otty, Commandant. — (26th February, 1833.)

Captains.
Wm. Eagles, 10 May, '24
Saml. Strange, 29 Mar. '25
James Reed, 23 Sept. '26
Thomas Reed, 2 Aug. '30
B. Stanton, 20 Mar. '33
G. A. Nagel, 22 do do
J. Ponsford, 20 Jan. '34
W. P. Scott, 21 do do
Robert Ellis, 22 do do
Lieutenants.
W. Drake, 29 March, '25
J. Stackhouse, do do
G. Eagles, 19 do '27
A. S. Perkins, 20 Mar. '33
S. Garrison, 21 do do

John Reed, 22 do do
N. Vail, 23 do do
W. Lawton, 24 do do
Geo. Lovell, 25 do do
W. Jordan, 26 do do
T. Ruddick, 27 do do
John Owens, 20 Jan. '34
Edward Eagles, 21 do do
J. W. M. Irish, 22 do do
John Murray, 23 do do
Wm. M'Kay, 24 do do
James Olive, 25 do do
Wm. Clarke, 26 do do
Abner Hampton, 27 do do
John Strange, 28 do do
Nelson Robinson, 29 do do

Gilbert Jordan, 30 do do
William Ball, 31 do do
Edward Lane, 1 Feb. do
John Brown, 2 do do
R. G. Moran, 3 do do
S. Fraser, 4 do do
Paymaster.
W. Vaughan, (capt.) 19 do
Adjutant.
T. M. Smith, (esp.) 23d do
Quartermaster.
Wm. Leavitt, (cap.) 22 do
Surgeon.
J. Paddock, 20 do

SUNBURY COUNTY MILITIA.

Lieutenant Colonel.
T. O. Miles, 25 Oct. 1823
Major.
Geo. Hayward, 6 Sep. '34
Captains.
John Dow, 3 Aug. '24
F.A. DeVeber, 11 Sept. '27
E. A. Miles, 26 Oct. '28
Jno. Trown, 24 Aug. '29
Jer. Tracey, 25 do do
W. S. Barker, 30 do '27
Geo. Nevers, 6 Sept. '34
Linus Seely, 7 do do

Henry Loder, 8 do do
Lieutenants.
N. Hubbard, 11 Sep. 1827
G.H.N. Harding, 12 do do
G. Miles, 26 Oct. '28
C. Hazen, 24 Aug. '29
T. Nason, jr. 26 do do
M. Coburn, 30 Aug. '30
John Bailey, 6 Sept. '34
Wm. Kimball, 7 do do
Ensigns.
Jer. Smith, 21 Sep. 1824
A.S. Hubble, 10 do '27

W. Easterbrooks, 12 do do
G. B. Taylor, 25 Oct. '28
J. Tilley, jr. 26 do do
H. Boone, 26 Aug. 1829
B. Barker, 30 Aug. '30
T. Mersereau, 6 Sept. '34
Geo. Nevers, jr. 7 do do
Adjutant.
J. Hazen, cap. 25 Aug. '23
Quartermaster.
Z. B. Brown, 29 Mar. '25
Surgeon.
J. W. Barker, 30 Aug. '30

CHARLOTTE COUNTY MILITIA.

First Battalion.
Colonel.
Hugh M'Kay, 1 Nov. 1793
Lieutenant Colonel.
C. Campbell, 24 Mar. 1824
Major.
Wm. Gaunt, 1 March, '32
Captains.
Jas. Boyd, (rif.) 5 Dec. '24
T. Connick, 19 May, '28
Geo. Walton, 3 Feb. '29
W. Whitlock, ar. 4 do do
G. M'Master, s.f. 5 do do
John Rodger, 28 June, '30

John Stubbs, 3 April, '32
Lieutenants.
J. Moore, rif. 3 Feb. '29
T. Berry, art. 4 do do
Jno. Grant, 5 do do
Jos. Walton, 28 June, '30
J. Aymar, s.f. 28 do do
J. Berry, 4 April, '32
Second Lieutenants.
G. F. Campbell, r. 5 Dec. '24
R. Wilson, rif. 19 May, '28
R. Watson, rif. 19 do do
D. Townsend, s.f. 3 Feb. '29
S.H. Whitlock, 4 do do
D. Thompson, 28 Jan., '30

G. M'Culloch, 29 do do
J. Campbell, rif. 5 Ap. '32
S. Getty, 6 do do
Ensigns.
C. Bartlett, 5 Dec. '24
E. Wilson, 12 Sep. '25
T. Connick, 1 Apr. '27
R. Hutchinson, 2 do do
J. Connick, 19 May, '28
J. M'Kirdy, 2 Feb. '29
S. Sheehan, jr. 4 Feb. '29
Wm. Walton, 28 June, '30
John Buckstaff, 16 Aug. '31
C. Frye, 6 April, '32

ymaster.
ow, c. 24 No. '26
termaster.
30 Aug. '30
rgeon.
ing, 1 Jan. '32

y, 1833.)
rdan, 30 do do
all, 31 do do
ane, 1 Feb do
n, 2 do do
an, 3 do do
4 do do

ymaster.
in, (capt.) 19 do
jutant.
h, (cap.) 23d do
termaster.
itt, (cap.) 22 do
urgeon.
20 do

rooks, 12 do do
lor, 25 Oct. '28
jr. 26 do do
26 Aug. 1829
30 Aug. '30
eau, 6 Sept. '34
rs, jr. 7 do do
jutant.
cap. 25 Aug. '23
termaster.
vn, 29 Mar. '25
urgeon.
ker, 30 Aug. '30

beh, 29 do do
ll, rif. 5 Ap. '32
6 do do

signs.
5 Dec. '24
12 Sep. '25
1 Apr. '27
on, 2 do do
19 May, '28
2 Feb. '28
h, jr. 4 Feb. '29
on, 28 June, '30
att, 16 Aug. '31
8 April, '32

Paymaster.
J. Wilson, cap. 2 Sep. '25
Adjutant.
J. H. Whitlock, c. 25 Se. '32
Quartermaster.
D. W. Jack, 25 Oct. '28
Surgeon.
Samuel Frye.

Second Battalion.
Lieutenant Colonel.
Thos. Wyer, 22 June, '24
Major.
Hugh Flaherty, 1 Jan. '32
Captains.
M. M'Farlane, 24 July, '12
P. Olinch, 1 Apr. '21
Jed. Califfe, 1 June, '20
H. Seelye, 27 May, '22
Jas. Pratt, 22 July, '23
S. M'Farlane, 5 Dec. '24
J. Mowatt, ar. 2 July, '29
W. Hyslopp, 18 May, '30
S. Wallace, 10 July, '32
Josh. Knight, 11 do do

Lieutenants.
H. Mathewson, 10 May, '24
A. Wetmore, 13 June, '25
T. H. Carmau, 26 Mar. '27
W. Gray, art. 10 do '28
J. Missinett, ar. 11 do do
B. Millikin, art. 2 July, '29
P. Justison, 18 May, '30
G. M'Kenzie, 10 July, '32
A. M'Cullum, 11 do do
D. M'Farlane, 12 do do
W. M'Kenzie, 13 do do
I. Justison, 14 do do
Ensigns.
R. Clinch, 2 Feb. '29
C. Hawkins, 8 May, '30
P. M'Diarmid, 10 July, '32
D. Turner, 11 do do
Geo. M'Kay, 12 do do
W. W. Hawkins, 13 do do
Josiah Wetmore, 14 do do
C. Hiliard, 15 do do
D. Gilmore, 11 Aug. '34
Paymaster.
P. Stubbs, cap. 12 June, '26
Adjutant.
W. Flaherty, cp. 13 Je. '25

Third Battalion.
Lieutenant Colonel.
H. Hatch, 13 Feb. 1828
Major.
C. R. Hatheway, 6 Mar. 26
Captains.
Jno. Chaffey, 1 Dec. '19
Joel Ingersoll, 1 June, '22
Jno. Leeman, 9 June, '23
Josiah Hancey, 12 June, '28
W. M'Lean, 13 do do
Jas. Brown, 3d Jan. '31
Willford Fisher, 4 do do
Philip Newton, 5 do do
Lieutenants.
D. Leeman, 27 May, '22
J. E. Hatheway, 9 June, '23
J. Appleby, 12 do '26
John Lord, 13 do do
Wm. Ferris, 7 Sept. '29
Wm. Curry, 9 do do
S. Ingersoll, 2 Aug. '30
James White, 3 Jan. '31
J. Cunningham, 4 do do
Ensigns.
Wm. Burke, 30 Nov. '22
F. M'Kenny, 5 Dec. '24
J. Leonard, 13 June, '26
E. Wilson, 7 Sep. '29
W. Huskins, 8 do do
Ethel Smith, 2 Aug. '30
Saml. Cheney, 3 Jan. '31
Dan. Calcomb, 4 do do
Paymaster.
C. Guay, cap. 12 June, '26
Adjutant.
T. Moses, cap. 11 Aug. '34
Quartermaster.
M. Caulkins, 25 Oct. '28
Surgeon.
W. C. M'Stay, 18 May, '30

Fourth Battalion.
Lieutenant Colonel.
David Mowatt, 1 Jan. 1832
Major.
N. Marks, 1 Jan. '32

Quartermaster.
P. Olinch, lt. 26 Mar. '27
Third Battalion.

Lieutenant Colonel.
H. Hatch, 13 Feb. 1828
Major.
C. R. Hatheway, 6 Mar. 26
Captains.
Jno. Chaffey, 1 Dec. '19
Joel Ingersoll, 1 June, '22
Jno. Leeman, 9 June, '23
Josiah Hancey, 12 June, '28
W. M'Lean, 13 do do
Jas. Brown, 3d Jan. '31
Willford Fisher, 4 do do
Philip Newton, 5 do do
Lieutenants.
D. Leeman, 27 May, '22
J. E. Hatheway, 9 June, '23
J. Appleby, 12 do '26
John Lord, 13 do do
Wm. Ferris, 7 Sept. '29
Wm. Curry, 9 do do
S. Ingersoll, 2 Aug. '30
James White, 3 Jan. '31
J. Cunningham, 4 do do
Ensigns.
Wm. Burke, 30 Nov. '22
F. M'Kenny, 5 Dec. '24
J. Leonard, 13 June, '26
E. Wilson, 7 Sep. '29
W. Huskins, 8 do do
Ethel Smith, 2 Aug. '30
Saml. Cheney, 3 Jan. '31
Dan. Calcomb, 4 do do
Paymaster.
C. Guay, cap. 12 June, '26
Adjutant.
T. Moses, cap. 11 Aug. '34
Quartermaster.
M. Caulkins, 25 Oct. '28
Surgeon.
W. C. M'Stay, 18 May, '30

Ensigns.
Wm. Burke, 30 Nov. '22
F. M'Kenny, 5 Dec. '24
J. Leonard, 13 June, '26
E. Wilson, 7 Sep. '29
W. Huskins, 8 do do
Ethel Smith, 2 Aug. '30
Saml. Cheney, 3 Jan. '31
Dan. Calcomb, 4 do do
Paymaster.
C. Guay, cap. 12 June, '26
Adjutant.
T. Moses, cap. 11 Aug. '34
Quartermaster.
M. Caulkins, 25 Oct. '28
Surgeon.
W. C. M'Stay, 18 May, '30

Fourth Battalion.
Lieutenant Colonel.
David Mowatt, 1 Jan. 1832
Major.
N. Marks, 1 Jan. '32

WESTMORLAND MILITIA.

Colonel William Botsford, Commanding

First Battalion.
Captains.
T. E. Smith, 11 June, '26
Wm. Smith, 12 do do
J. Chapman, 19 May, '28
Jas. Beatty, do do
M. Summers, 15 do do
Lieutenant Colonel.
W. Chapman, 1 Jan. 1832
Major.
R. Scott, jr. 31 July, '32

Captains.
Asa Upton, 3 June '25
Jas. Brown, 1 June, '24
J. Libby, 28 Mar. '27
J. Young, rif. 29 do do
Jos. Connick, 2 Feb. '29
Alex. Grant, 1 March, '32
Wm. Rose, art. 8 Apl. '34
W. Thompson, 9 do do
David Upton, 10 do do
Thos. Mitchell, 11 do do
Lieutenants.
H. M'Allister, 27 Mar. '26
A. Clendenning, 28 do do
J. Clendenning, 6 Feb. '29
W. Armstrong, 6 April, '32
Thomas Watt, 8 Apl. '34
J. Campbell, art. 9 do do
John Hannah, 10 do do
F. H. Todd, 11 do do
Angus Campbell, 12 do do
Second Lieutenants.
Jno. Porter, 1 June, '24
J. Hill, rifle, 5 Feb. '29
A. Lindsay, 5 April, '32
S. Hill, (rifle) 7 do do
W. Andrews, art. 8 Apl. '34
Peter Brown, 9 do do
Ensigns.
S. Hitchings, 29 Mar. '27
A. Buchannan, 8 Apl. '34
Elisha Thompson, 9 do do
W. E. Scott, 10 do do
Adjutant.
A. Canpbell, (cap.) 2 Ap. '32
Quartermaster.
G. Hunter, cap. 1 Mar. '32
Paymaster.
J. Marks, cap. 1 Mar. '32
Surgeon.
L. Watson, 1 March, '32

CAVALRY.
Captain.
James Albee, 8 April, '34
First Lieutenant.
John Cotterell, 8 April, do
Second Lieutenants.
Joel Hill, 28 May, '31
Wm. Todd, 8 April, '34
Cornet.
Wm. Buckanah, 8 do do

CAVALRY.
Captain.
James Albee, 8 April, '34
First Lieutenant.
John Cotterell, 8 April, do
Second Lieutenants.
Joel Hill, 28 May, '31
Wm. Todd, 8 April, '34
Cornet.
Wm. Buckanah, 8 do do

Robert Stiles, 21 May, '35
D. Hannington, 22 do do
Alex. Cain, 25 do do

Lieutenants.

J. Gesner, 12 June, '28
Jno. Jones, 19 May, '28
W. Bateman, 15 do '29
J.N. Chapman, 17 do do
S. Weldon, 18 do do
J.M. Cormick, 19 do do
W. Milne, jr. 29 July, '32
John Welling, 30 do do
John Stultz, 31 do do
P. Constantine, 1 Aug. do
John Scott, 21 May, '33
Jos. Hannington, 22 do do
John Boyd, 23 do do
Robert Dobson, 24 do do
Geo. Hannington, 25 do do

Ensigns.

J. Nelson, 19 May, '28
S. S. Willmot, 19 do do
J. Jacques, 16 May, '29
Zach. Lutz, 17 do do
F. Welling, 28 July, '32
T. Welling, 30 do do
R. D. Chapman, 31 do do
Samuel Mills, 2 Aug. do
F. Thibodeau, 3 do do
Geo. Cochran, 21 May, '33
Charles Holsted, 22 do do
Oliver Pitfield, 23 do do
David Cule, 24 do do
George Harper, 25 do do
James Welling, 26 do do

Paymaster.

J. Robison, cap. 12 Jly '26

Adjutant.

J. Kelly, capt. 23 July, '23

Quartermaster.

J. Charters, cap. 20 Nov '22

Second Battalion.

Lieutenant Colonel.

A. E. Botsford, 1 Jan. 1832

Major.

C. D. Smith, 25 Sep. '32

Captains.

M. M. Eachran, 4 April, '26
G. Oulton, 5 do do
M. Cornewall, 6 do do
E. Allen, 7 do do
S. Easterbrooks, 16 Jne. '28
Jas. Evans, 17 do do
W. P. Sayre, 26 July, '30
R. Taylor, 27 do do
W. Burnham, 30 May, '31
T. Lowerton, 31 do do
John Bulmer, 1 June, do
H. Chapman, 24 Sept. '32
Chas. Botsford, 25 do do

Jos. Bowser, 3d July, '33

First-Lieutenant.

G. Hay, (art.) 30 May, 31

Lieutenants.

W. Raworth, 22 July, '23
Jos. Wells, 5 Apr. '26
Jno. Anderson, 6 do do
T. Ayre, 16 June, '28
R. Carter, 17 do do
H. Charters, 25 July, '30
T. Keillor, 27 do do
R. Chapman, 28 do do
T. Cochran, 29 do do
Jas. Cutler, 30 do do
G. Botsford, 31 do do
Geo. Ury, 1 Aug. do
C. Thibodeau, 24 Sep. '32
T. Trenholm, 25 do do
Wm. Evans, 26 do do
H. Ogden, (2d lt. ar.) 27 do
Ch. Dixon, (3d) 3 July '33

Ensigns.

John Raworth, 10 May, '24
J. Dowling, do do
G. Trenholm, 7 Apr. '26
R. Chapman, 9 do do
W. Dixon, 10 do do
Jos. Brown, 16 June, '28
John Bulmer, 17 do do
Jas. Black, 26 July '30
M. Sayre, 27 do do
Wm. Lamb, 28 do do
Wm. Carter, 1 June, do
M. Cornewall, 24 Sep. '32
Ch. Dixon, 25 do do
C. Bottenhouse, 26 do do
G. Easterbrooks, 27 do do
Benjn. Wells, 28 do do
Wm. Brown, 29 do do
James Maxwell, 31 do do
Geo. Sconlar, 3 July, '33
John Fawcett, 4 do do

Adjutant.

D. Chapman, cap. 4 Ap. '26

Quartermaster.

J. Sayre, jr. 22 July, '23

Surgeon.

R. Smith, 1 June, '10

Assistant Surgeon.

M. Backhouse, 22 July, '23

Third Battalion.

Lieutenant-Colonel.

Philip Palmer, 22 Oct. '33

Major.

Samuel Clark, 26 May, '34

Captains.

M. Willmot, 29 Nov. '22
Jno. Smith, 30 do do

Ezra Stiles, 10 June, '38
W. M. Almon, 11 do do
D. Cameron, 12 do do
J. E. Turner, 13 do do
Jos. Turner, 14 do do
T. B. Moore, (ar) 22 Oct. do

Lieutenants.

E. Peck, 26 Oct. '28
Wm. Read, 27 do do
Elias Peck, 10 June, '32
W. Kilpatrick, 11 do do
Jas. Brewster, 12 do do
Wm. Groce, 13 do do
J. Beary, jr. 14 do do
O. Calkins, 15 do do
W. Fillmore, 16 do do
E. Stephens, (1st lt. art.)
22d Oct. do
Jos. Rodgers, (2d lt. art.)
23d Oct. do

Ensigns.

A. Robinson, 10 June, '33
John Read, 11 do do
Wm. Wallace, 12 do do
Dant. Steves, 13 do do
N. Wells, jr. 14 do do
Wm. Rogers, 15 do do
P. Sinclair, 16 do do
B. H. Newcomb, 17 do do

Paymaster.

E. Peck, jr. (cap.) 10 June
(do.

Adjutant.

J. Sterritt, cap. 27 Ap. '24

Surgeon.

Wm. Wilson, 25 Oct. '28

Quartermaster.

Geo. Rogers, 22 Aug. '25

Fourth Battalion.

Major.

H. Chapman, 25 July, '30

Captains.

P. Chapman, 30 May, '31
J. Anderson, 31 do do
John Averd, 1 June, do
Jno Trenholm, 2 do do

Lieutenants.

Wm. Hughson, 30 May, '31
Wm. Anderson, 31 do do
Lisley Allan, 1 June, do
John Downing, 2 do do
Robert Copp, 18 May, '32

Ensigns.

John Ogden, 18 May, '32
Wm. M. Morris, 19 do do
Benjn. Allan, 20 do do

Adjutant.

J. Chapman, (c) 25 July, '30

Quartermaster.

C. Allen, (A.) 30 May, '34

NORTHUMBERLAND MILITIA.

First Battalion.

Lieutenant Colonel.
J.A. M'Donald, 2 July, '29

Major.
Jno. Clark, 2d July, 1829

Captains.
A. Fraser, 1 June, '22

J. M'Donald, 2 June, '22

G. Taylor, 4 do do

A. Russell, 5 do do

Jas. Gilmour, 7 do do

R. M'Leod, 8 June '22

Jno. Joseph, 9 do do

W. Hamilton, 10 do do

L. Henry, 4 April, '28

D. Perley, 5 do do

A. Goodfellow, 6 do do

Wm. Gray, 28 June, '30

M. Cranney, 29 do do

John Campbell, 9 Aug. '31

Thos. Ullock, 10 do do

Lieutenants.
R. M'Donald, 2 June, '22

F. Morrison, 5 do do

Wm. Joplin, 7 do do

J. Henderson, 11 do do

A. Henderson, 4 Apr. '26

Andrew Hay, 5 do do

J.T. Williston, 6 do do

L. Robichaud, 8 do do

Wm. Carman, 9 do do

J.M. Johnson, 10 do do

Jno. Fraser, 11 do do

W. M'Donald, 12 do do

D. Shaw, 28 June, '30

D. Johnson, 29 do do

Jno. M'Lean, 1 July, '31

Jas. Hirlihy, 9 Aug. '31

And. M'Innes, 10 do do

Ensigns.
J. Oshaldson, 1 June, '22

A. Davidson, 2 do do

A. Morrison, 7 June, '22

A. Clark, 4 Apr. '28

P. Morrison, 5 do do

O. Clark, 6 do do

I. Paley, 7 do do

W. Taylor, 8 do do

J. Stewart, 9 do do

D. Fraser, 10 do do

A. Ritchie, 28 June, '30

J. Porter, 29 do do

J. M'Intyre, 1 July, do

Wm. Douglas, 2 do do

D. M'Leod, 9 Aug. '31

G. Williston, 10 do do

Adjutant.
D. M'Donald, 9 June, '23

Quartermaster.
J. Davidson, 9 June, '23

Surgeon.
Alex. Key, 28 June, '30

Second Battalion.

Lieutenant Colonel.
A. Davidson, 2 July, 1829

Major.
J. D. Fraser, 2 July, 1829

Captains.
Jno. Astle, 20 Aug. '13

Jno. Price, 21 do do

Alex. Fraser, 19 do '22

C. M'Donald, 20 do do

Jared Betts, 22 do do

E. Fowler, 23 do do

Jno. Fraser, 1 June, '23

Abel Pond, 10 May, '24

D. Croker, 11 do do

Wm. Loch, 25 Apr. '25

D. M'Kay, 26 do do

R. M'Laughlin, 27 do do

J. Donald, 12 June, '27

W. Fiddes, 18 May, '30

A. Duncan, 19 May, '30

Wm. End, 20 do do

Lieutenants.
D. Tozer, 2 June, '23

T. Smith, 11 May, '24

A. Moores, 12 do do

A. Hovey, 13 do do

N. Ritchie, 23 Apr. '25

G. Henderson, 29 do do

E. M'Quillan, 12 June, '25

H. B. Allison, 13 do do

R. Henderson, 14 do do

J. Hovey, 18 May, '30

J. Sutton, 19 do do

Geo. Kerr, 20 do do

P. Brannen, 21 May, '30

T. Coughlin, 22 do do

Ensigns.
W. Saunders, 19 Aug. '22

J. Tozer, 9 May, '24

R. Wasson, 10 do do

M. Hovey, 11 do do

T. Newcomb, 13 do do

A. Young, 29 Apr. '25

P. Davidson, 30 do do

T. Underhill, 12 June, do

J. Gillan, 13 do do

C. Coughlan, 14 do do

J. Simpson, 16 do do

D. Clarke, 22 Feb. '30

T. Underhill, 18 May, '30

A. Campbell, 19 do do

L. Astle, 20 do do

R. Jardine, 21 do do

D. Mott, 22 do do

H. Hammill, 12 Aug. '31

Michael O'Brien, do do

Adjutant.
W. Harley, cap. 19 Au. '23

Quartermaster.
E. Baker, (lt.) 1 April, '33

Surgeon
Jas. Petrie, 9 May, '24

GLOUCESTER MILITIA.

First Battalion.

Lieutenant Colonel.
R. Ferguson, 1 Jan. 1832

Major.

Captains.
J. Miller, rif. 9 June, '23

Jno. Shea, 13 June '24

Jas. Lee, 12 July, 24

J. Douglass, 26 do '25

D. M'Intosh, 27 do do

A. Ferguson, 28 Jan. '27

W. Munro, 15 May, '29

Jno. Fraser, 16 do do

Benj. Dawson, 23 May, '31

John M'Intosh, 24 do do

Lieutenants.
Wm. Gray, 13 July, '24

Wm. Craig, 13 July '25

J. Fleming, 14 do do

C. Coimbeau, 15 do do

M. Newton, 8 do '28

R. Clyde, rif. 9 Jan. '27

W. Young, 9 do do

R. Ferguson, jr. 26 do do

J. Montgomery, 27 do do

S. Waitte, 15 May, '29

Allan Fraser, 23 do, '31

J. Robertson, 24 May, '31

A. Degrace, 25 do do

Ensigns.

R. Connacher, 13 July, '25

Jno. Edgar, 10 do do

W. M'Kenzie, 27 Jan. '27

D. Racarty, 29 do do

A. M'Pherson, 16 May, '29

N. Busted, 22 Feb. '30

Peter Adams, 25 May, '31

Geo. Munro, 24 do do

J. Bapt. Roy, 25 do do

Adjutant.
J. M'Pherson, cap. 11 Oc. '23

Quartermaster.
J. Read, lieut. 15 May, '29

Second Battalion.

Lieutenant Colonel.

John Young, 1 Jan. 1832

Major.

M. Landry, 1 March, '32

Captains.

W. Drysdale, 14 June, '24

H. Adams, 11 July, '25

A. Landry, 12 do do

Jno. Adams, 13 do do

M. Campbell, ad. 12 July, '26

R. Hixon, 1 March, '32

Mich. Martin, 2 do do

Wm. Young, 3 do do

Peter DeGrace, 4 do do

John Doen, 5 Mar. '32

Lieutenants.

J. Gennie, 13 July, '28

J. Spence, 14 do do

A. Campbell, 28 Jan. '27

P. Campbell, 29 do do

Urban Landry, 1 Mar. '32

A. Louiser, 2 do do

John Vincent, 3 do do

John Farlong, 4 do do

Wm. Jardine, 5 do do

James Young, 6 do do

James Dorin, 7 do do

M. Duval, 8 do do

Geo. Sivret, 9 do do

C. Coughlin, 10 do do

Ensigns.

A. Landry, 1 Mar. '33

A. Robichaud, 2 do do

Jos. Sewell, 3 do do

Thomas Keit, 4 do do

And. Wilson, 5 do do

Rene Cheson, 6 do do

Adjutant.

M. Campbell, cp. 15 My. '29

Paymaster.

H.W. Baldwin, c. 1 Mar. '32

Quartermaster.

Jno. Ritchie, 15 May, '29

KENT MILITIA.

First Battalion.

Major.

D. M'Almon, 21 May, '33

Captains.

G. Pagan, 25 Aug. '21

R. Jardine, 21 Feb. '26

J.P. Ford, [il.] 25 Nov. do

J.W. Weldon, 25 Oct. '28

Colin Rankin, 21 May, '33

Saml. Girvan, 22 do do

Wm. Brait, 23 do do

Jos. Muzeroll, 1 July, '34

Wm. Roach, 2 do do

Lieutenants.

P. Campbell, 21 Feb. '26

R. Haddow, 23 May, '33

Jno. Craig, 24 do do

W. Fitzgerald, 25 do do

J.A. Clare, [r] 26 do do

Wm. Girvan, 27 do do

Dav. Swayne, 28 do do

A. M'Michael, 1 July, '34

John Miller, 2 do do

Ensigns.

W. Harper, 27 Nov. '26

P. Sutherland, 15 May, '29

Andrew Dixon, 23 May, '33

David Wright, 24 do do

John Whelen, 25 do do

John Clare, [r.] 26 do do

John Main, 27 do do

Pat'k. Donnelly, 28 do do

J. D. Weldon, 1 July, '34

A. F. M'Kay, 2 do do

John M'Kay, 3 do do

Jas. Gallagher, 4 do do

Jas. Graham, 11 Aug. do

Adjutant.

T. Lansdowne, [cap] 25 Oc.

Quartermaster.

D. Gifford, [en] 21 May '83

Surgeon.

R. Masterton, 13 Feb. '26

Second Battalion.

Lieutenant Colonel.

James Long, 1 Jan. 1832

Major.

— — — — —

Captains.

John Bowser, 23 May, '31

W. Hannington, 26 do do

Ira Hicks, 27 do do

Pascal Porrier, 28 do do

Robert Dysart, 9 Aug. do

Syd. Chapman, 10 do do

Jacob Geaner, 22 Oct. '33

Thos. Assineau, 23 do do

Lieutenants.

Chas. Surratt, 26 Nov. '26

Israel Hicks, 23 May, '31

T. Bushea, 24 do do

L. Sesmonds, 27 do do

Wm. Ward, 9 Aug. do

E. Atkinson, 22 Oct. '33

P. Robichaud, 23 do do

Ensigns.

Placid Porrier, 23 May, '31

Jno. Sheridan, 24 do do

J. Thibodeau, 25 do do

Ira Hicks, jr. 27 do do

P. M'Phelim, 9 Aug. do

P. A. Purdy, 10 do do

Greg. Cornice, 22d Oct. '33

John Burk, jr. 23d do do

Adjutant.

A. B. Smith, c. 23 May, '31

KING'S COUNTY MILITIA.

First Battalion.

Lieutenant Colonel.

Wm. M'Leod, 29 May, '33

Major.

Philip Dann, 29 May, '33

Captains.

J.S. Wetmore, 27 May, '22

Philip Nase, 29 Apr. '27

John Smith, 19 May, '28

T. Botawick, 25 Oct. '28

A. Price, 26 do do

Zeb. Jones, 28 July, '32

And. Hamm, 29 do do

Jer. Mabee, 29 May, '33

Wm. Dickson, 30 do do

Thos. Flewelling, 31 do do

Joseph A. Lyon, 1 June do

Lewis Carvell, 2 do do

John Wright, 5 Nov. do

Lieutenants.

W. J. Flewelling, 27 My, '22

H. Bulvea, 10 May, '24

S. Gorum, 25 Oct. '28

James Reid, 28 July, '32

D. Harrington, 30 do do

Geo. Harding, 31 do do

P. M'Kenzie, 29 May, '33

James Prince, 30 do do

Jas. D. Williams, 31 do do

Gab. Worden, 1 June, do

Wm. Gorum, 2 do do

James Bulvea, 2 do do

Dav. Hamm, [rif.] 3 do do

Benj. Oole, do do 4 do do

N. Warren, 5 Nov. do

Ensigns.

J. Flewelling, 27 May, '22

Geo. Neal, 19 May, '28

I. H. Foster, 26 Oct. do

W. G. Harding, 30 July, '32

Henry Nase, 31 do do

John Piers, 29 May, '33

John Flewelling, 30 do do

Robert Crawford, 31 do do

do do
do do

Mar. '32

do do

do do

do do

do do

do do

do do

15 My. '29

1 Mar. '32

1 Mar. '32

1 Mar. '32

1 Mar. '32

1 Mar. '32

1 Mar. '32

1 Mar. '32

1 Mar. '32

1 Mar. '32

1 Mar. '32

1 Mar. '32

1 Mar. '32

1 Mar. '32

1 Mar. '32

1 Mar. '32

1 Mar. '32

1 Mar. '32

1 Mar. '32

1 Mar. '32

1 Mar. '32

1 Mar. '32

1 Mar. '32

1 Mar. '32

1 Mar. '32

1 Mar. '32

1 Mar. '32

1 Mar. '32

1 Mar. '32

1 Mar. '32

1 Mar. '32

1 Mar. '32

1 Mar. '32

1 Mar. '32

1 Mar. '32

1 Mar. '32

1 Mar. '32

1 Mar. '32

1 Mar. '32

1 Mar. '32

1 Mar. '32

1 Mar. '32

1 Mar. '32

1 Mar. '32

1 Mar. '32

1 Mar. '32

1 Mar. '32

1 Mar. '32

1 Mar. '32

1 Mar. '32

1 Mar. '32

1 Mar. '32

1 Mar. '32

1 Mar. '32

1 Mar. '32

1 Mar. '32

Isaac Vanwart, 1 June do
James M'Leod, 2 do do
James Kiersted, 5 Nov. do
Adjutant.

D. Wetmore, cap. 1 My. '27
Paymaster.

D. Pickett, c. 31 July, '32
Quartermaster.

D. Mather, lt. 25 July, '30

Second Battalion.

Lieutenant Colonel.

J. C. Vail, 1 Jan. 1852

Major.

S. Freeze, 8 April, '34

Captains.

O. Barbare, 24 Nov. '28

S. Goslin, 27 do do

Jas. Ryan, 28 do do

O. B. Cogle, 30 May, '31

Daniel Sheck, 13 Mar. '32

Abr. Johnston, 14 do do

S. M'Kully, 18 May, do

C. Stockton, 8 April, '34

John M'Lean, 9 do do

Lieutenants.

R. M'Monagle, 25 Aug. '23

I. Parleo, 30 May, '31

M. Frazee, 12 Mar. '32

John Burgess, 13 do do

John Pearson, 14 do do

G. Dungfield, 18 May, do

Geo. Morton, 19 do do

X. Cogle, ri. 20 do do

J. Hallett, ri. 21 do do

Wm. Coates, 8 April, '34

Wm. Teakles, 9 do do

Ensigns.

Jas. Secord, 12 Mar. '32

Jacob Wright, 13 do do

E. Twynham, 14 do do

John O. Vail, 18 May, do

N. Morton, 19 do do

T. Harrison, 20 do do

D. Carmichael, 13 June, '33

Thos. Chapman, 8 Apl. '34

Isaac Teakles, 9 do do

Paymaster.

Jno. Marten, 6 Mar. '26

Adjutant.

J. Gidney, [capt.] 25 Oct.

['32

Quartermaster.

Jas. Hoyt, 11 Oct. 1823

Surgeon.

S. T. Gove, 8 April, '34

CAVALRY,

Attached to the 2d Batt.

Captain.

Rich'd Roach, 8 Apl. '34

Lieutenant.

William M'Leod, 8 do do

Cornet.

Cern. M'Monagle, 8 do do

Quartermaster.

Wm. M'Monagle, 8 do do

Third Battalion.

Lieutenant Colonel.

C. Wetmore, 12 Mar. '32

Major.

A. C. Evanson, 18 May, '32

Captains.

J. Davis, 10 May, '24

J. Humbert, rif. 5 Sep. '25

S. Fairweather, 14 June, '26

J. Upham, 14 Sep. '29

Wm. Gion, 12 June, '30

J. Wetmore, 13 do do

A. Ketchum, 25 July, do

W. Gunker, 25 Oct. do

T. S. Demill, 12 July, '31

Thos. Corry, 13 do do

S. Sprague, 18 May, '32

J. Fayerweather, 21 May '33

Jas. Schoales, 22 Oct. do

Lieutenants.

G. Sprague, 17 June, '26

H. A. Demill, 14 Sep. '29

A. Dickie, rif. 52 Feb. '30

B. Cromwell, r. 23 do do

Jno. Hays, 11 June, do

T. Dixon, 12 do do

J. Sediquiest, 13 June, '30

J. M'Cready, 14 do do

M. Fowler, 25 July, do

W. Debow, 25 Oct. do

J. Wansnaker, jr. 12 Jul '31

Caleb Davis, jr. 13 do do

G. Hughson, 19 May, '32

Zeb. Davis, 13 June, '33

Robt. Wallace, 22 Oct. do

Ensigns.

J. M. Fowler, 14 Sep. '29

H. Dickie, jr. 12 June, '30

C. E. Smith, 13 do do

J. F. Sherwood, 23 Oct. '30

Robt. Spragg, 13 July, '31

Jessie Gillies, 19 May, '32

C. Sprague, 20 do do

Harry Deforest, 21 May '33

Edwd. Sprague, 13 June, do

Abm. DeMill, 2 Sept. do

Jas. Alexander, 27 Oct. do

Adjutant.

A. English, (capt.) 25 Aug.

1825.

Quartermaster.

Samuel Hallett, 21 Aug '32

Surgeon.

C. Wilson, 12 June, '25

CAVALRY,

Attached to the 3d Batt.

Captain.

James Peters, 5 June, '32

First Lieutenant.

Danl. Hatfield, 5 June, '32

Second Lieutenant.

Jos. Gillies, 5 June, '32

Cornet.

Chas. Perkins, 5 June, '32

Paymaster.

J. Wetmore, c. 18 May, '32

QUEEN'S COUNTY MILITIA.

Lieutenant-Colonel Harry Peters, Commanding.

First Battalion.

Lieutenant Colonel.

H. Peters, 20 June, 1825

Major.

Wm. Foshay, 20 Aug. '27

Captains.

T. Hewlet, 6 June, '23

R. Golding, 3d. 25 May, '24

T. R. Wetmore, 11 Sep. '28

A. Smith, 20 Aug. '27

D. Smith, 21 Aug. '27

H. Lyons, 22 do do

J. Corbet, 23 do do

A. Gunter, 25 July, '30

C. Smith, 7 Sep. '30

Brad. Hewlett, 21 Aug. '33

W. Colwell, 11 Aug. '34

R. Smith, jr. 20 do do

D. Vanwart, 21 do do

Lieutenants.

J. Colwell, 20 Aug. '27

H. Babbitt, 21 Aug. '27

J. Graham, 27 July, '30

R. Dingee, 7 Sep. '30

R. Hewlett, 23 Aug. '31

Geo. Vail, 24 do do

Abm. Merritt, 20 Aug. '33

L.H. DeVeber, 21 do do

Thos. Graham, 22 do do

James Titus, 11 Aug. '34

Thos. Golding, 20 do do

Caleb Merritt, 21 do do

Ensigns.
 O. Sterritt, 21 June, '25
 S. Currie, 20 Aug. '27
 Jno. Glass, 21 Aug. '27
 F. Wood, 29 July, '30
 John Currie, 22 Aug. '31
 Asa Smith, 23 do do
 John Mays, 20 Aug. '33
 Jas. E. Smith, 21 do do
 Rich. Graham, 22 do do
 Ch. Currie, 23 do do
 George Fox, 23 Aug. '33
 F. Purdy, 11 Aug. '34
 W. Carpenter, 20 do do

Adjutant.
 R. Golding, 27 Apr. '24

Paymaster.
 N.H. DeVeber, 24 Aug. '29

Surgeon.
 R. P. Smith, 24 Aug. '29

Quartermaster.
 W.F. Bonnell, lt. 18 May '32

Second Battalion.

Major.
 P. Yeamans, 23 May '31

Captains.
 Jno. Earle, 7 June, '23
 J. M'Lean, 8 do do
 J. Seacord, 20 Aug. '27
 J. M'Allister, 21 do do
 S. White, 30 Aug. '30
 J. Humphreys, 31 do do
 A. Branscomb, 26 July, '31
 Jas. Butler, 27 July, '31
 James Price, 2 Sept. '33
 A.B.M'Donald, 11 Aug. '34
 N. Bulyca, 12 do do

Lieutenants.
 J. Calkins, 10 June, '23
 L. M'Lean, 11 do do
 C. L. Corey, 20 Aug. '27
 J. M'Donald, 22 do do
 H. Briggs, 31 do do
 J. Keith, 1 Sep. do

Peter Cox, 26 July, '31
 Robt. Yeamans, 27 do do
 James Keith, 30 Sep. '33
 E. Briggs, 11 Aug. '34
 T. Carpenter, 12 do do

Ensigns.
 T. Corey, 7 June, '23
 E. Stone, 9 do do
 D. Stilwell, 10 June, '23
 A. Corey, 20 Aug. '27
 J. Shearer, 21 do do
 Geo. Currie, 31 do do
 J. M'Donald, 28 July, '31
 E. Briggs, 27 do do
 John Mullin, 2 Sep. '33
 Jesse Alwood, 4 do do
 Jas. Mullen, 11 Aug. '34
 Isaac Clarke, 12 do do

Adjutant.
 J.M'Donald, cp. 20 Au. '27

Quartermaster.
 D. Palmer, 20 Aug. '27

CARLETON COUNTY MILITIA.

First Battalion.

Lieutenant Colonel.

Rich. Ketchum, 1 Jan. '32

Major.

John Dibblee, 8th May, '32

Captains.

T. G. Cunliffe, 8 April, '19
 A. B. Walsh, 25 June, '21
 J. S. Browne, 14 June, '24
 W. Dibblee, 4 April, '25
 J. Ketchum, 5 do do
 T. Phillips, 9 June, '23
 A. Nicholson, 29 July, '28
 B. Tibbitts, 30 do do
 J. Dickenson, 30 Aug. '30
 E. Turner, 31 do do
 B. P. Griffith, 8 May, '32
 Rufus Payson, 9 do do
 John Kearney, 10 do do
 C. M'Laughlin, 11 do do
 E. A. Cunliffe, 12 do do
 H. E. Dibblee, 13 do do
 A. B. Sharpe, 27 Aug. '34
 W. M'Kenzie, 28 do do

Lieutenants.

James Dingee, 9 April, '25
 Elijah Sisson, 30 July, do
 N. Stickney, 25 Aug. '29
 P. Dickenson, 30 do do
 M. Giberson, 31 do do
 G. Milbury, 1 Sept. do
 W. N. Mallory, 25 Oct. do
 W. M'Donald, 8 May, '32
 Chas. Upham, 11 do do
 R. Ketchum, 12 do do
 Jos. Phillips, 13 do do

A. S. Carman, 26 Aug. '34
 R. Beardsley, 27 do do
 E. Estabrooks, 28 do do
 A. Lockwood, 29 do do

Ensigns.

J. Nicholson, 29 July, '28
 G. Murphy, 30 do do
 J. Brown, Jr. 30 Aug. '29
 T. Burlock, 31 do do
 J. Giberson, 1 Sept. do
 Jas. Lloyd, 2 do do
 W. Shaw, 25 Oct. do
 Micheau Bedell, 9 May '32
 Isaac Carvel, 10 do do
 C. Wolhaupter, 11 do do
 James Bishop, 13 do do
 Thos. Upham, 24 Sep. do
 Ben. Churchill, 25 do do
 Geo. M'Kenzie, 26 do do
 Wm. Hannah, 28 Aug. '34
 A. Bull, 27 do do
 H. Beardslev, 28 do do

Adjutant.

C. Raymond, cap. 28 Jy. '28

Quartermaster.

C. Peabody, lt. 23 Sep. '26

Surgeon.

Chas. Rice, 26 Aug. 1834

Second Battalion.

Lieutenant Colonel.

P. Frazer, 7th Sept. 1830

Major.

Captains.

P. Lizotte, 1st Dec. 1824

A. Bellefleur, 2 do do
 F. Thihodeau, 3 do do
 F. Violette, 4 Dec. 1824
 S. Hebert, 4 July, '27
 L.R. Coombes, 1 June, '24
 F. Rice, adjt. 7 Sept. '30
 G. Cere, 8 do do
 R. Michaud, 9 do do

Lieutenants.

Xavier Cere, 2 Dec. '24
 L. Bellefleur, 4 do do
 J. B. Martin, 5 do do
 Jos. Cere, 7 Sept. '30
 Jos. Hebert, 8 do do
 J. B. Daigle, 9 do do
 B. Lizotte, 10 do do
 T. Nugent, 11 do do
 S. Hebert, jr. 12 do do
 M. Farrell, 13 do do
 A M'Crear, 14 do do

Ensigns.

D. Violette, 5 Dec. '24
 R. Violette, 7 Sept. '30
 F. M'Donnell, 8 do do
 M. Mercure, 9 do do
 J. Burgoine, 10 do do
 R. Martin, 11 do do
 P. Mercure, 11 do do
 T. Martin, 13 do do
 D. Cere, 14 Sept. '24

Adjutant.

F. Rice, capt. 1 Dec. '24

Quartermaster.

J. B. Souci, 1st Dec. '24

y, '31
o do
ep. '33
g. '34
o do

ne, '23
o do
ne, '23
g. '27
o do
o do
ly, '31
o do
ep. '33
o do
ng. '34
o do

Au. '27
r.
ug. '27

o do
o do
ec. 1824
ily, '27
ne, '24
ept. '30
o do
o do

Dec. '24
dp do
do do
ept. '30
do do
do do
do do
do do
do do
do do
do do

Dec. '24
ept. '30
do do
do do
do do
do do
do do
do do
Sept. '24

Dec. '24
ter.
Dec. '24

