





Handwritten text in a cursive script, likely a historical document or manuscript. The text is written in a dark ink on aged, yellowish paper. It consists of approximately 15 lines of text, with some lines starting with large, decorative initials. The script is dense and difficult to decipher without specialized knowledge of the language and dialect. The text appears to be a formal or legal document, possibly a contract or a record of a transaction. There are some markings and symbols interspersed within the text, which could be abbreviations or specific notations. The overall appearance is that of an old, well-used manuscript page.

Handwritten text in a cursive script, likely a historical document or manuscript. The text is written in a dark ink on aged, yellowish paper. The script is dense and fills most of the page, with some lines appearing to be part of a list or a series of entries. The text is written in a cursive script, likely a historical document or manuscript. The text is written in a dark ink on aged, yellowish paper. The script is dense and fills most of the page, with some lines appearing to be part of a list or a series of entries. The text is written in a cursive script, likely a historical document or manuscript. The text is written in a dark ink on aged, yellowish paper. The script is dense and fills most of the page, with some lines appearing to be part of a list or a series of entries.

Handwritten text in a cursive script, likely a historical document or manuscript. The text is written on aged, yellowed paper and is oriented vertically, reading from top to bottom. The script is dense and somewhat difficult to decipher due to its cursive nature and the fading of the ink. The text appears to be a list or a series of entries, possibly related to a legal or administrative record. The words are written in a fluid, connected style, with some capital letters and some words that are more clearly legible than others. The overall appearance is that of an old, well-used manuscript.







Handwritten text in a cursive script, likely a historical document or manuscript. The text is written in a dark ink on aged, yellowed paper. The script is dense and fills most of the page, with some lines starting with a large initial letter. The text is arranged in approximately 15 horizontal lines, with some lines being longer than others. The overall appearance is that of a well-used, possibly legal or administrative, document from a past era.



Handwritten text in a cursive script, likely a historical document or manuscript. The text is written in a dark ink on aged, yellowish paper. It consists of approximately 15 lines of text, with some lines starting with a large initial letter. The script is dense and difficult to decipher without specialized knowledge of the language and script. The text appears to be a list or a series of entries, possibly related to a legal or administrative document. The lines are roughly parallel to each other, following the curve of the page. There are some small marks and variations in ink density throughout the text.







Handwritten text in a cursive script, likely a form of shorthand or a specific dialect. The text is arranged in approximately 15 horizontal lines across the page. The script is dense and highly stylized, with many characters appearing to be combinations of letters or symbols. The ink is dark, and the paper shows signs of age and wear. The text is written in a consistent direction from left to right, with some variations in line length and spacing. The overall appearance is that of a personal or working manuscript.



Handwritten text in a cursive script, likely a historical document or manuscript. The text is written in a dark ink on aged, yellowish paper. The script is dense and fills most of the page, with some lines appearing to be part of a list or a series of entries. The handwriting is characteristic of the early modern period, possibly from the 16th or 17th century. The text is written in a cursive script, likely a historical document or manuscript. The text is written in a dark ink on aged, yellowish paper. The script is dense and fills most of the page, with some lines appearing to be part of a list or a series of entries. The handwriting is characteristic of the early modern period, possibly from the 16th or 17th century.







Handwritten text in a cursive script, likely a list or index. The text is written on aged, yellowed paper and is oriented vertically. The script is dense and difficult to decipher due to its cursive nature and the angle of the page. The text appears to be organized into several columns or sections, possibly representing a catalog or a set of records. The words are written in a dark ink, and the overall appearance is that of an old, handwritten document.



Handwritten text in a cursive script, likely a historical document or manuscript. The text is written in a dark ink on aged, yellowish paper. The script is dense and fills most of the page, with some lines appearing to be part of a list or a series of entries. The text is oriented vertically, reading from top to bottom. The handwriting is highly stylized and characteristic of the 17th or 18th century. There are some faint markings and a red stamp in the lower-left corner.









Handwritten text in a cursive script, likely a list or index, written on aged, yellowed paper. The text is oriented vertically and appears to be a list of entries, possibly names or titles, with some entries starting with "Der" or "Die". The handwriting is dense and somewhat difficult to decipher due to the cursive style and the age of the document. The text is written in a dark ink, and the paper shows signs of wear, including discoloration and some faint markings.



Handwritten text in a cursive script, likely a historical document or manuscript. The text is written in a dark ink on aged, yellowish paper. It consists of approximately 15 lines of text, with some lines starting with a large, decorative initial letter. The script is dense and difficult to decipher without specialized knowledge of the language and script. The text appears to be a formal document, possibly a contract or a record of a transaction, given the use of some specific terms and the overall structure. The paper shows signs of age, including some staining and discoloration.





Handwritten text in a cursive script, likely a historical document or manuscript. The text is written in a dark ink on aged, yellowish paper. The script is dense and fills most of the page, with some lines appearing to be part of a list or a series of entries. The text is written in a cursive script, likely a historical document or manuscript. The text is written in a dark ink on aged, yellowish paper. The script is dense and fills most of the page, with some lines appearing to be part of a list or a series of entries. The text is written in a cursive script, likely a historical document or manuscript. The text is written in a dark ink on aged, yellowish paper. The script is dense and fills most of the page, with some lines appearing to be part of a list or a series of entries.





Handwritten text in a cursive script, likely a historical document or manuscript. The text is written in a dark ink on aged, yellowish paper. It consists of approximately 15 lines of text, with some lines starting with a large initial letter. The script is dense and difficult to decipher without specialized knowledge of the language and script. The text appears to be a list or a series of entries, possibly related to a legal or administrative document. There are some faint markings and a small red mark near the top right of the page.



Handwritten text in a cursive script, likely a historical document or manuscript. The text is written in a dark ink on aged, yellowish paper. It consists of approximately 15 lines of text, arranged in a single column. The script is dense and characteristic of early modern European handwriting. The text is written in a cursive script, likely a historical document or manuscript. The text is written in a dark ink on aged, yellowish paper. It consists of approximately 15 lines of text, arranged in a single column. The script is dense and characteristic of early modern European handwriting. The text is written in a cursive script, likely a historical document or manuscript. The text is written in a dark ink on aged, yellowish paper. It consists of approximately 15 lines of text, arranged in a single column. The script is dense and characteristic of early modern European handwriting.





Handwritten text in a cursive script, likely a historical document or manuscript. The text is written in a dark ink on aged, yellowish paper. The script is dense and fills most of the page, with some lines appearing to be part of a list or a series of entries. The text is oriented vertically on the page, reading from top to bottom. The handwriting is somewhat slanted and includes various flourishes and abbreviations. There are some small, illegible markings and possibly initials interspersed throughout the text. The overall appearance is that of a well-used, historical document.

Die erste...  
 Die zweite...  
 Die dritte...  
 Die vierte...  
 Die fünfte...  
 Die sechste...  
 Die siebente...  
 Die achte...  
 Die neunte...  
 Die zehnte...  
 Die elfte...  
 Die zwölfte...  
 Die dreizehnte...  
 Die vierzehnte...  
 Die fünfzehnte...  
 Die sechzehnte...  
 Die siebenzehnte...  
 Die achtzehnte...  
 Die neunzehnte...  
 Die zwanzigste...



Handwritten text in a cursive script, likely a historical document or manuscript. The text is written on aged, yellowed paper and is oriented vertically, reading from top to bottom. The script is dense and characteristic of early modern European handwriting. The text is mirrored across the page, suggesting it was written on one side and then the other, or perhaps it's a bleed-through from the reverse side. The words are difficult to decipher due to the cursive style and the angle of the page.

Die erste...  
 Die zweite...  
 Die dritte...  
 Die vierte...  
 Die fünfte...  
 Die sechste...  
 Die siebente...  
 Die achte...  
 Die neunte...  
 Die zehnte...  
 Die elfte...  
 Die zwölfte...  
 Die dreizehnte...  
 Die vierzehnte...  
 Die fünfzehnte...  
 Die sechzehnte...  
 Die siebenzehnte...  
 Die achtzehnte...  
 Die neunzehnte...  
 Die zwanzigste...

Handwritten text in a cursive script, likely a historical document or manuscript. The text is written in a dark ink on aged, yellowish paper. The script is dense and fills most of the page, with some lines appearing to be part of a list or a series of entries. The handwriting is characteristic of the 17th or 18th century. The text is oriented vertically on the page, reading from top to bottom. There are some faint markings and a metal fastener visible on the left edge of the page.





Handwritten text at the top of the page, appearing to be a title or header.

Handwritten text line, likely the beginning of a paragraph.

Handwritten text line, continuing the text.

Handwritten text line, continuing the text.

Handwritten text line, continuing the text.

Handwritten text line, continuing the text.

Handwritten text line, continuing the text.

Handwritten text line, continuing the text.

Handwritten text line, continuing the text.

Handwritten text line, continuing the text.

Handwritten text line, continuing the text.

Handwritten text line, continuing the text.

Handwritten text at the bottom of the page, possibly a signature or date.





Handwritten text in a cursive script, likely a historical document or manuscript.

Handwritten text in a cursive script, likely a historical document or manuscript.

Handwritten text in a cursive script, likely a historical document or manuscript.

Handwritten text in a cursive script, likely a historical document or manuscript.

Handwritten text in a cursive script, likely a historical document or manuscript.

Handwritten text in a cursive script, likely a historical document or manuscript.

Handwritten text in a cursive script, likely a historical document or manuscript.

Handwritten text in a cursive script, likely a historical document or manuscript.

Handwritten text in a cursive script, likely a historical document or manuscript.

Handwritten text in a cursive script, likely a historical document or manuscript.

Handwritten text in a cursive script, likely a historical document or manuscript.

Handwritten text in a cursive script, likely a historical document or manuscript.

Handwritten text in a cursive script, likely a historical document or manuscript.

Handwritten text in a cursive script, likely a historical document or manuscript.

Handwritten text in a cursive script, likely a historical document or manuscript.





Handwritten text in a cursive script, likely a historical document or manuscript. The text is written on aged, yellowed paper and is oriented vertically, reading from top to bottom. The script is dense and somewhat difficult to decipher due to its cursive nature and the fading of the ink. The text appears to be a list or a series of entries, possibly related to a legal or administrative record. The words are written in a fluid, connected style, with some larger letters and flourishes. The overall appearance is that of an old, well-used document.





Handwritten text in a cursive script, likely a historical document or manuscript. The text is written in a dark ink on aged, yellowish paper. The script is dense and fills most of the page, with some lines starting with a large initial letter. The text is written in a cursive script, likely a historical document or manuscript. The text is written in a dark ink on aged, yellowish paper. The script is dense and fills most of the page, with some lines starting with a large initial letter. The text is written in a cursive script, likely a historical document or manuscript. The text is written in a dark ink on aged, yellowish paper. The script is dense and fills most of the page, with some lines starting with a large initial letter.

Die erste...  
 Die zweite...  
 Die dritte...  
 Die vierte...  
 Die fünfte...  
 Die sechste...  
 Die siebente...  
 Die achte...  
 Die neunte...  
 Die zehnte...  
 Die elfte...  
 Die zwölfte...  
 Die dreizehnte...  
 Die vierzehnte...  
 Die fünfzehnte...  
 Die sechzehnte...  
 Die siebenzehnte...  
 Die achtzehnte...  
 Die neunzehnte...  
 Die zwanzigste...



Handwritten text in a cursive script, likely a historical document or manuscript. The text is written in a dark ink on aged, yellowish paper. The script is dense and fills most of the page, with some lines starting with large, decorative initials. The text is written in a cursive script, likely a historical document or manuscript. The text is dense and fills most of the page, with some lines starting with large, decorative initials. The text is written in a cursive script, likely a historical document or manuscript. The text is dense and fills most of the page, with some lines starting with large, decorative initials.



Handwritten text in a cursive script, likely a historical document or manuscript. The text is written in a dark ink on aged, yellowish paper. The script is dense and fills most of the page, with some lines appearing to be part of a list or a series of entries. The handwriting is somewhat slanted and includes various flourishes and abbreviations. There are several instances of the word "et" and "in" visible, suggesting a Latin or Germanic origin. The text is oriented vertically on the page, with the top of the page being the right side of the image. The overall appearance is that of a well-used, possibly legal or administrative, document from the 16th or 17th century.



The text on this page is written in a highly stylized, cursive script, likely a form of shorthand or a specific dialect. It consists of approximately 18 lines of text, each beginning with a large, decorative initial letter. The script is dense and difficult to decipher without a key or context. The lines are arranged vertically, with some overlapping and varying lengths. The ink is dark, and the paper shows signs of age and wear.

Handwritten text in a cursive script, likely a historical document or manuscript. The text is written on aged, yellowed paper and is oriented vertically on the page. The script is dense and difficult to decipher due to its cursive nature and the fading of the ink. The text appears to be organized into several paragraphs or sections, with some lines starting with large, decorative initials. The overall appearance is that of an old, well-used manuscript.





Handwritten text in a cursive script, likely a historical document or manuscript. The text is written in a dark ink on aged, yellowish paper. The script is dense and fills most of the page, with some lines appearing to be part of a list or a series of entries. The handwriting is characteristic of the 17th or 18th century. The text is oriented vertically on the page, reading from top to bottom. There are some faint markings and possibly small numbers or letters interspersed within the lines of text. The overall appearance is that of a well-used, historical record or account.



Handwritten text in a cursive script, likely a historical document or letter. The text is written on aged, yellowed paper and is oriented vertically. The script is dense and difficult to decipher due to its cursive nature and the condition of the paper. The text appears to be a single continuous piece of writing, possibly a letter or a record entry. There are several lines of text, with some lines starting with a large initial letter. The overall appearance is that of an old, handwritten manuscript.



Die erste...  
 die zweite...  
 die dritte...  
 die vierte...  
 die fünfte...  
 die sechste...  
 die siebente...  
 die achte...  
 die neunte...  
 die zehnte...  
 die elfte...  
 die zwölfte...  
 die dreizehnte...  
 die vierzehnte...  
 die fünfzehnte...  
 die sechzehnte...  
 die siebenzehnte...  
 die achtzehnte...  
 die neunzehnte...  
 die zwanzigste...

Handwritten text in a cursive script, likely a historical document or manuscript. The text is written in a dark ink on aged, yellowish paper. The script is dense and fills most of the page, with some lines starting with a small mark resembling a comma or a specific symbol. The text is oriented vertically on the page, reading from top to bottom. The handwriting is somewhat slanted and consistent throughout, suggesting a single scribe. There are some faint markings and bleed-through from the reverse side of the page.



Die erste...  
 Die zweite...  
 Die dritte...  
 Die vierte...  
 Die fünfte...  
 Die sechste...  
 Die siebente...  
 Die achte...  
 Die neunte...  
 Die zehnte...  
 Die elfte...  
 Die zwölfte...  
 Die dreizehnte...  
 Die vierzehnte...  
 Die fünfzehnte...  
 Die sechzehnte...  
 Die siebenzehnte...  
 Die achtzehnte...  
 Die neunzehnte...  
 Die zwanzigste...  
 Die einundzwanzigste...  
 Die zweiundzwanzigste...  
 Die dreiundzwanzigste...  
 Die vierundzwanzigste...  
 Die fünfundzwanzigste...  
 Die sechsundzwanzigste...  
 Die siebenundzwanzigste...  
 Die achtundzwanzigste...  
 Die neunundzwanzigste...  
 Die dreißigste...



Handwritten text in a cursive script, likely a historical document or manuscript. The text is written in a dense, flowing style, characteristic of early modern handwriting. The page is aged and shows signs of wear, including a metal fastener on the left edge. The text is oriented vertically on the page, reading from top to bottom.



Handwritten text in a cursive script, likely a historical document or manuscript. The text is written on aged, yellowed paper and is oriented vertically. The script is dense and difficult to decipher due to its cursive nature and the fading of the ink. The text appears to be a list or a series of entries, possibly related to a legal or administrative record. The words are written in a highly stylized, flowing hand, characteristic of 17th or 18th-century handwriting. The paper shows signs of wear, including creases and discoloration, particularly along the left edge where the binding is visible.





Handwritten text in a cursive script, likely a historical document or manuscript. The text is written in a dense, flowing style with many flourishes and is arranged in approximately 15 horizontal lines. The ink is dark, and the paper shows signs of age and wear. The script is characteristic of early modern European cursive, possibly from the 16th or 17th century. The text is written in a language that appears to be German or Dutch, given the structure of the words and the use of certain characters like 'v' and 'w'. The lines are closely spaced, and the overall appearance is that of a continuous block of text. There are some small annotations or corrections visible, particularly in the middle and lower sections of the page. The handwriting is very fluid, with many loops and curves, making it difficult to read without specialized knowledge of the script.





Handwritten text in a cursive script, likely a historical document or manuscript. The text is written in a dark ink on aged, yellowish paper. The script is dense and fills most of the page. There are several large, decorative initials or flourishes interspersed throughout the text, particularly in the middle and lower sections. The text appears to be organized into several paragraphs or sections, with some lines starting with a large initial letter. The overall appearance is that of a well-used, historical manuscript.



Handwritten text in a cursive script, likely a historical document or manuscript. The text is written on aged, yellowed paper and is oriented vertically. The script is dense and difficult to decipher due to its cursive nature and the condition of the paper. The text appears to be a list or a series of entries, possibly related to a legal or administrative record. The words are written in a fluid, connected style, with some words appearing to be repeated or written in a shorthand manner. The overall appearance is that of a well-used, historical document.





Handwritten text in a cursive script, likely a historical document or manuscript. The text is written in a dark ink on aged, yellowish paper. The script is dense and fills most of the page, with some lines appearing to be part of a list or a series of entries. There are several instances of the word "Herr" (Lord) and "Frau" (Lady) interspersed throughout the text, suggesting a list of names or titles. The handwriting is somewhat slanted and varies in size, indicating a personal or informal style. The paper shows signs of age, including some staining and discoloration, particularly towards the bottom and right edges. The overall appearance is that of a well-used, historical document.





Handwritten text in a cursive script, likely a historical document or manuscript. The text is written in a dark ink on aged, yellowish paper. The script is dense and fills most of the page, with some lines appearing to be part of a list or a series of entries. The handwriting is somewhat slanted and compact, characteristic of early modern cursive. There are some faint markings and what appears to be a small signature or mark near the top right. The overall appearance is that of a well-used, possibly archival, document.



Handwritten text in a cursive script, likely a historical document or manuscript. The text is written in a dark ink on aged, yellowish paper. The script is dense and fills most of the page, with some lines appearing to be part of a list or a series of entries. The text is written in a cursive script, likely a historical document or manuscript. The text is written in a dark ink on aged, yellowish paper. The script is dense and fills most of the page, with some lines appearing to be part of a list or a series of entries. The text is written in a cursive script, likely a historical document or manuscript. The text is written in a dark ink on aged, yellowish paper. The script is dense and fills most of the page, with some lines appearing to be part of a list or a series of entries.





Handwritten text in a cursive script, likely a historical document or manuscript. The text is written in a dark ink on aged, yellowish paper. It consists of approximately 15 lines of text, with some lines starting with double quotation marks. The script is dense and difficult to decipher without specialized knowledge of the language. There are some faint markings and a red circular stamp in the lower-left corner.







Handwritten text in a cursive script, likely a historical document or manuscript. The text is written in a dark ink on aged, yellowed paper. The script is dense and fills most of the page, with some lines appearing to be separated by double lines. The text is written in a cursive script, likely a historical document or manuscript. The text is dense and fills most of the page, with some lines appearing to be separated by double lines. The text is written in a cursive script, likely a historical document or manuscript. The text is dense and fills most of the page, with some lines appearing to be separated by double lines.



Handwritten text in a cursive script, likely a historical document or manuscript. The text is written in a dark ink on aged, yellowish paper. It consists of approximately 15 lines of text, with some lines starting with a double quote symbol ("). The script is dense and difficult to decipher due to its cursive nature and the fading of the ink. The text appears to be a continuous passage, possibly a letter or a record. There are some large, stylized initials or symbols interspersed throughout the text, which may be significant to the document's content or origin. The overall appearance is that of an old, well-used manuscript.





Handwritten text in a cursive script, likely a historical document or manuscript. The text is written in a dark ink on aged, yellowish paper. It consists of approximately 15 lines of text, with some lines starting with a large initial letter. The script is dense and somewhat difficult to decipher due to its cursive nature and the age of the document. The text appears to be a list or a series of entries, possibly related to a legal or administrative record. The lines are written in a consistent style, with some variations in the size and shape of the letters. The overall appearance is that of a well-preserved but aged manuscript.





Handwritten text in a cursive script, likely a historical document or manuscript. The text is written in a dark ink on aged, yellowish paper. It consists of approximately 15 lines of text, with some lines containing decorative flourishes or initials. The script is dense and difficult to decipher without specialized knowledge of the language or dialect used. The text appears to be a formal or legal document, possibly a contract or a record of a transaction, given the structured nature of the lines and the use of some specific symbols or characters.



Handwritten text in a cursive script, likely a historical document or manuscript. The text is written on aged, yellowed paper and is oriented vertically, reading from right to left. The script is dense and appears to be a form of shorthand or a specific dialect. The text is arranged in approximately 15 lines, with some lines containing multiple columns of writing. The ink is dark, and the paper shows signs of wear, including discoloration and some faint markings. The overall appearance is that of an old, well-used manuscript page.





Handwritten text in a cursive script, likely a historical document or manuscript. The text is written in a dark ink on aged, yellowish paper. The script is dense and fills most of the page, with some lines appearing to be separated by small gaps or indentations. The handwriting is highly stylized and characteristic of early modern European cursive. The text is written in a single column, with some lines starting with a large initial letter. The overall appearance is that of a well-used, possibly legal or administrative, document from the 16th or 17th century.

Die erste...  
 Die zweite...  
 Die dritte...  
 Die vierte...  
 Die fünfte...  
 Die sechste...  
 Die siebente...  
 Die achte...  
 Die neunte...  
 Die zehnte...  
 Die elfte...  
 Die zwölfte...  
 Die dreizehnte...  
 Die vierzehnte...  
 Die fünfzehnte...  
 Die sechzehnte...  
 Die siebenzehnte...  
 Die achtzehnte...  
 Die neunzehnte...  
 Die zwanzigste...



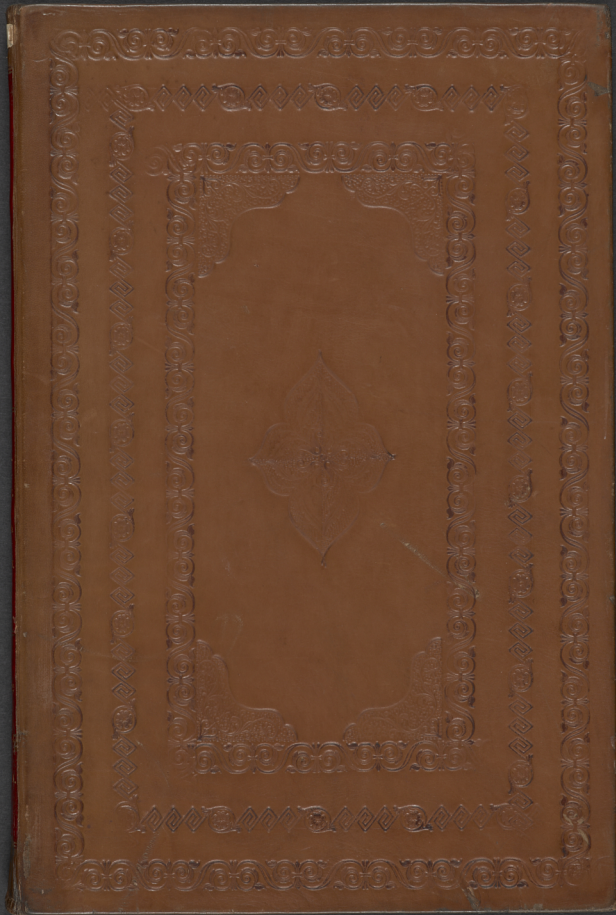
Handwritten text in a cursive script, likely a historical document or manuscript. The text is written in a dark ink on aged, yellowish paper. It consists of approximately 15 lines of text, with some lines starting with a large, decorative initial letter. The script is dense and difficult to decipher without specialized knowledge of the language and script. The text appears to be a formal document, possibly a contract or a record of a transaction, given the structured nature of the lines and the use of initials. The paper shows signs of age, including some staining and wear at the edges.



Handwritten text in a cursive script, likely a form of shorthand or a specific dialect. The text is arranged in three lines. The first line contains several groups of characters, some enclosed in double quotes. The second line continues with similar groups, including a sequence of three characters that look like '9', '9', '9'. The third line features four distinct symbols, each enclosed in double quotes, which appear to be stylized or shorthand representations of words or phrases.







12.329.

24 A.C.  
O. R. H. Co.

~~240 F~~







A

ALGERND OF SULTAN SURYA ARIUM,  
JAWA B. K.

MUS.

BRIT.

JURE

EMPT.

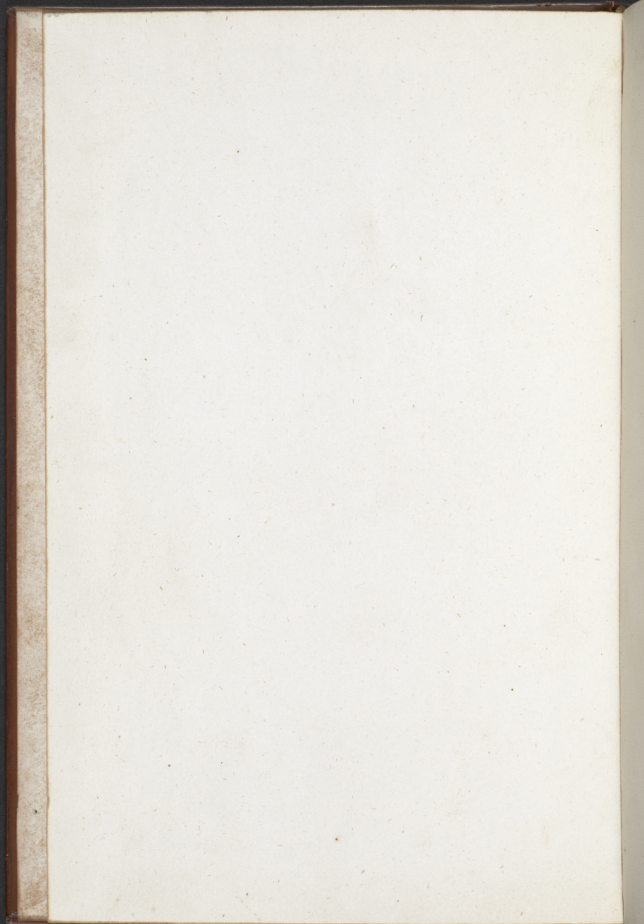
12,329

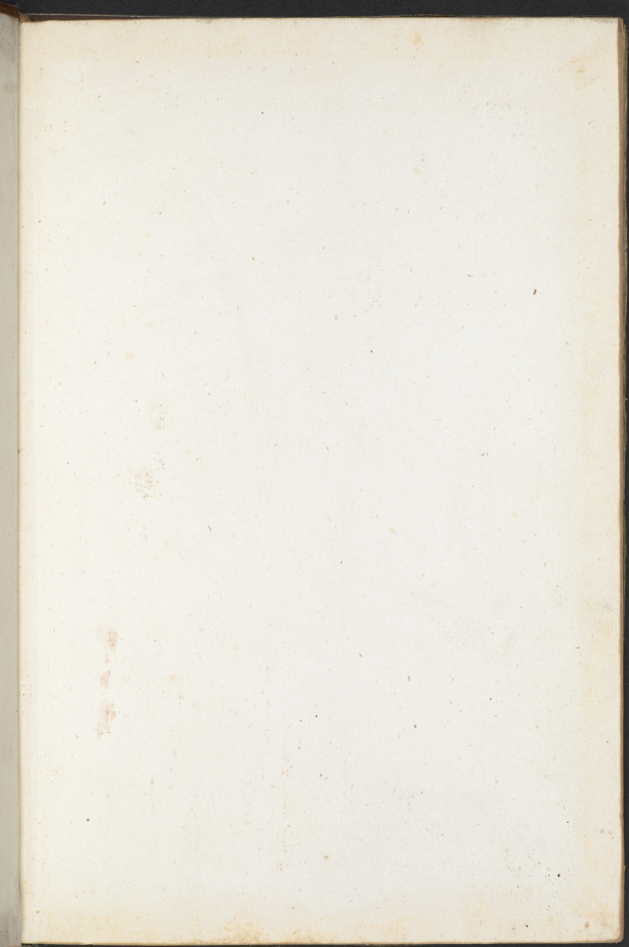
PLUT

CCXL. E.



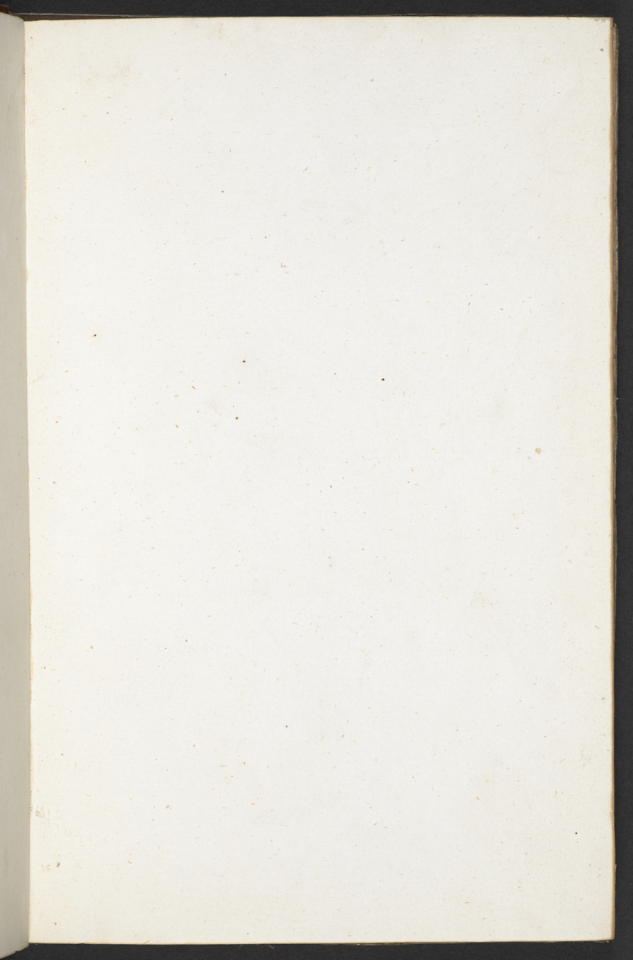




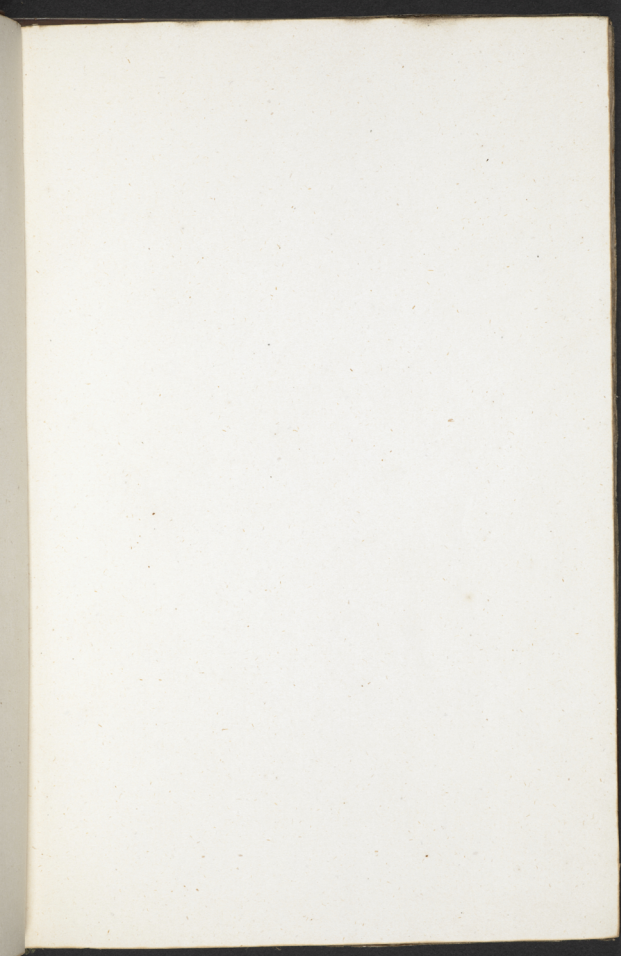






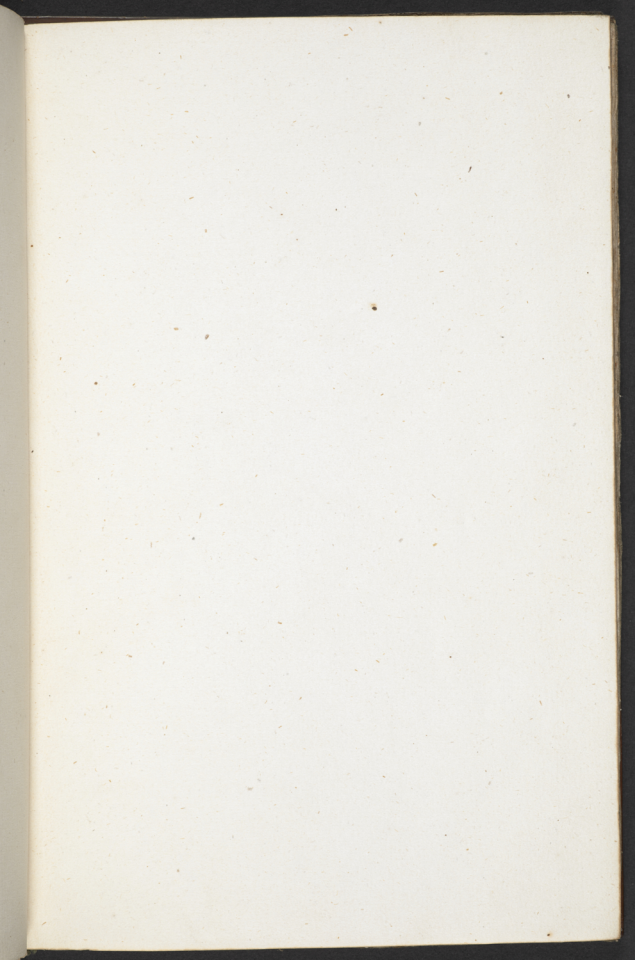
















60.

Savanes  
60

Add. 12, 329

Purchased of J. Crawford by  
Feb. 1847.

