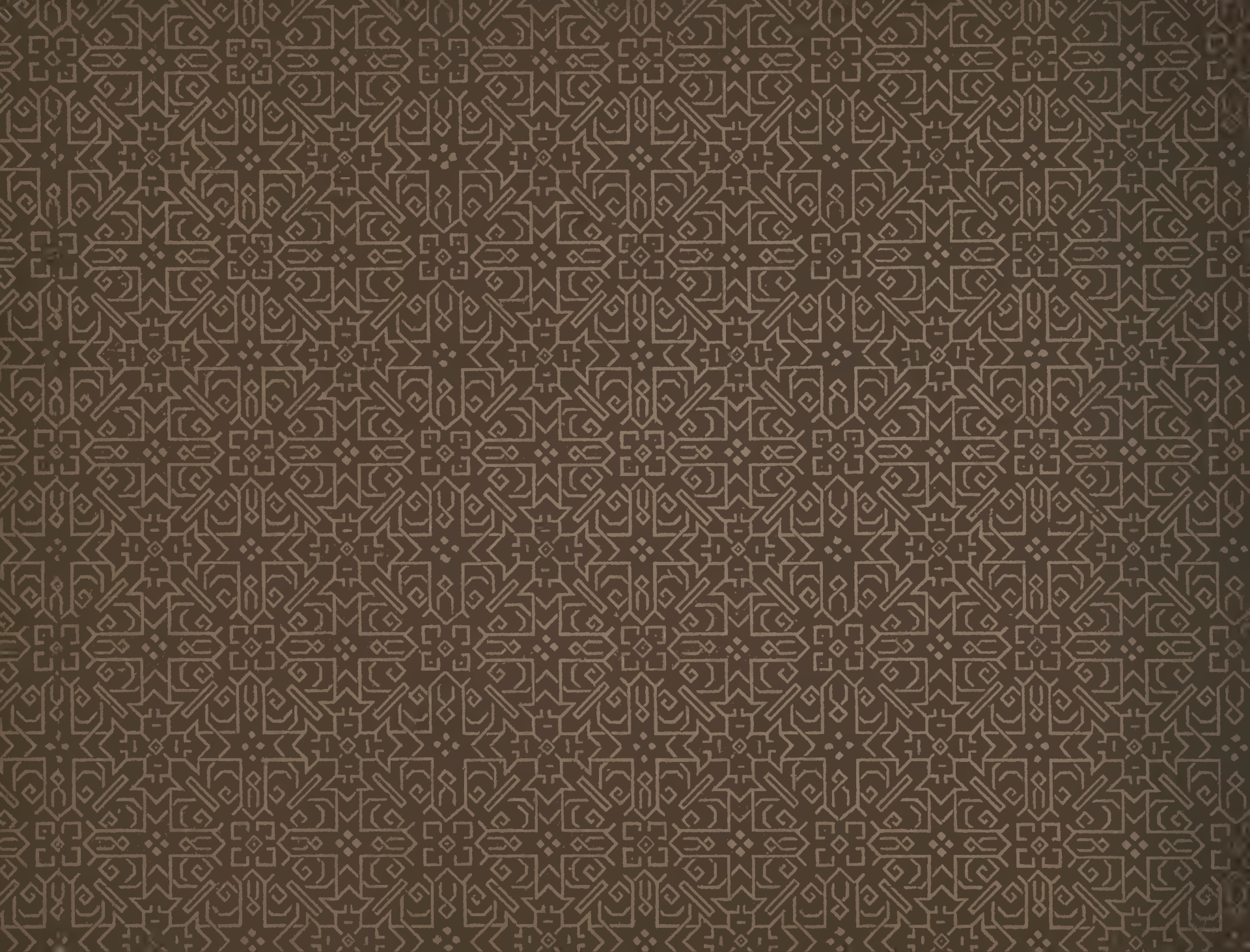


MLCS 90/05829

FT MEADE  
GenColl







# BOSTON ▼ ▼

ILLUSTRATED

PHOTOGRAPHS IN BLACK.

COPYRIGHT, 1892, BY A. WITTEMANN, 67 & 69 SPRING STREET, NEW YORK.

THE ALBERTYPE CO., N. Y.

RELEASSED  
CATHOLIC UNIVERSITY OF AMERICA  
LIBRARY  
WASHINGTON, D. C.

MLCS 90/05829

121533  
~~UNIVERSITY OF AMERICA~~

90-888446



STATE HOUSE.







INSTITUTE OF TECHNOLOGY—BOYLSTON STREET FROM CLARENDON STREET.







COMMONWEALTH AVENUE, FROM THE ALGONQUIN CLUB HOUSE.





LEIF ERICKSON MONUMENT.







THE ALGONQUIN CLUB HOUSE--COMMONWEALTH AVENUE.





TRINITY CHURCH AND HOTEL BRUNSWICK.







HOTEL VENDÔME.





NEW SOUTH CHURCH.







NEW PUBLIC LIBRARY—COPLEY SQUARE.





LAKE IN PUBLIC GARDENS.







HORACE MANN SCHOOL.

EXETER STREET.

HOLLIS STREET UNITARIAN CHURCH.





WASHINGTON STATUE—PUBLIC GARDENS.







MUSEUM OF FINE ARTS.



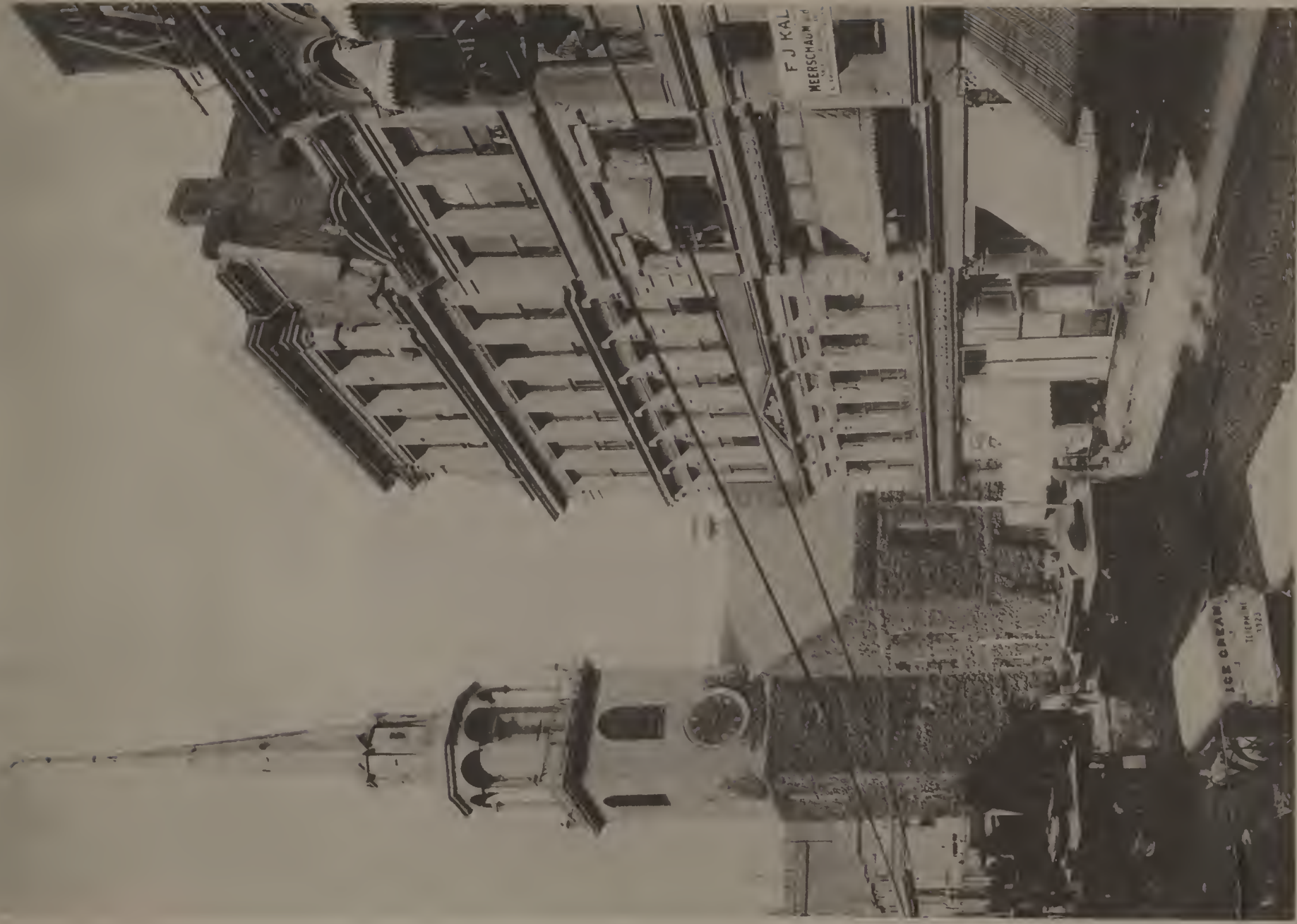


CRISPOS ATTUCK MONUMENT,  
COMMON.



EVERETT STATUE,  
PUBLIC GARDENS

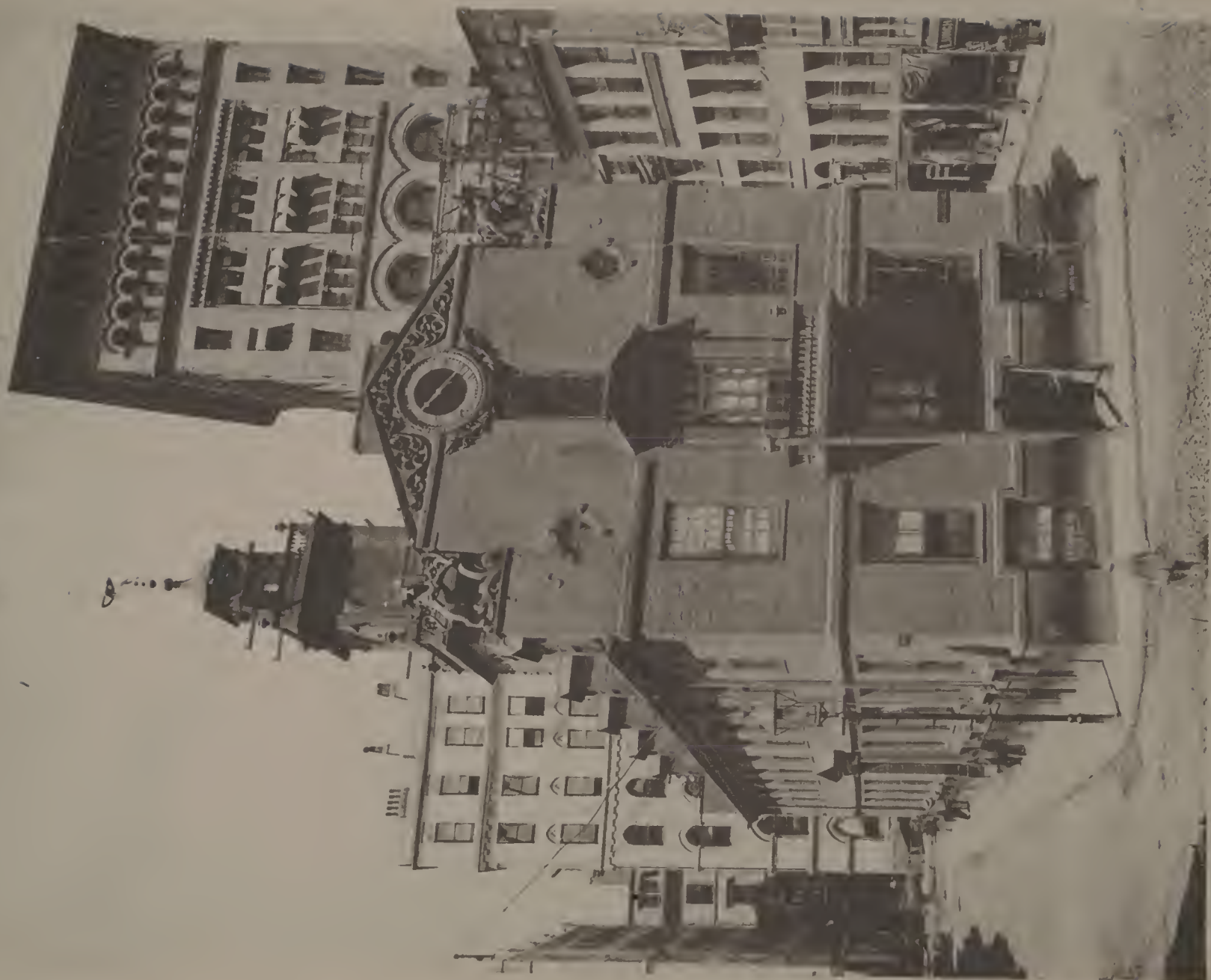




OLD SOUTH CHURCH—WASHINGTON STREET.







SEARS BUILDING.

OLD STATE HOUSE.

AMES BUILDING.





CHARLES SUMNER STATUE.

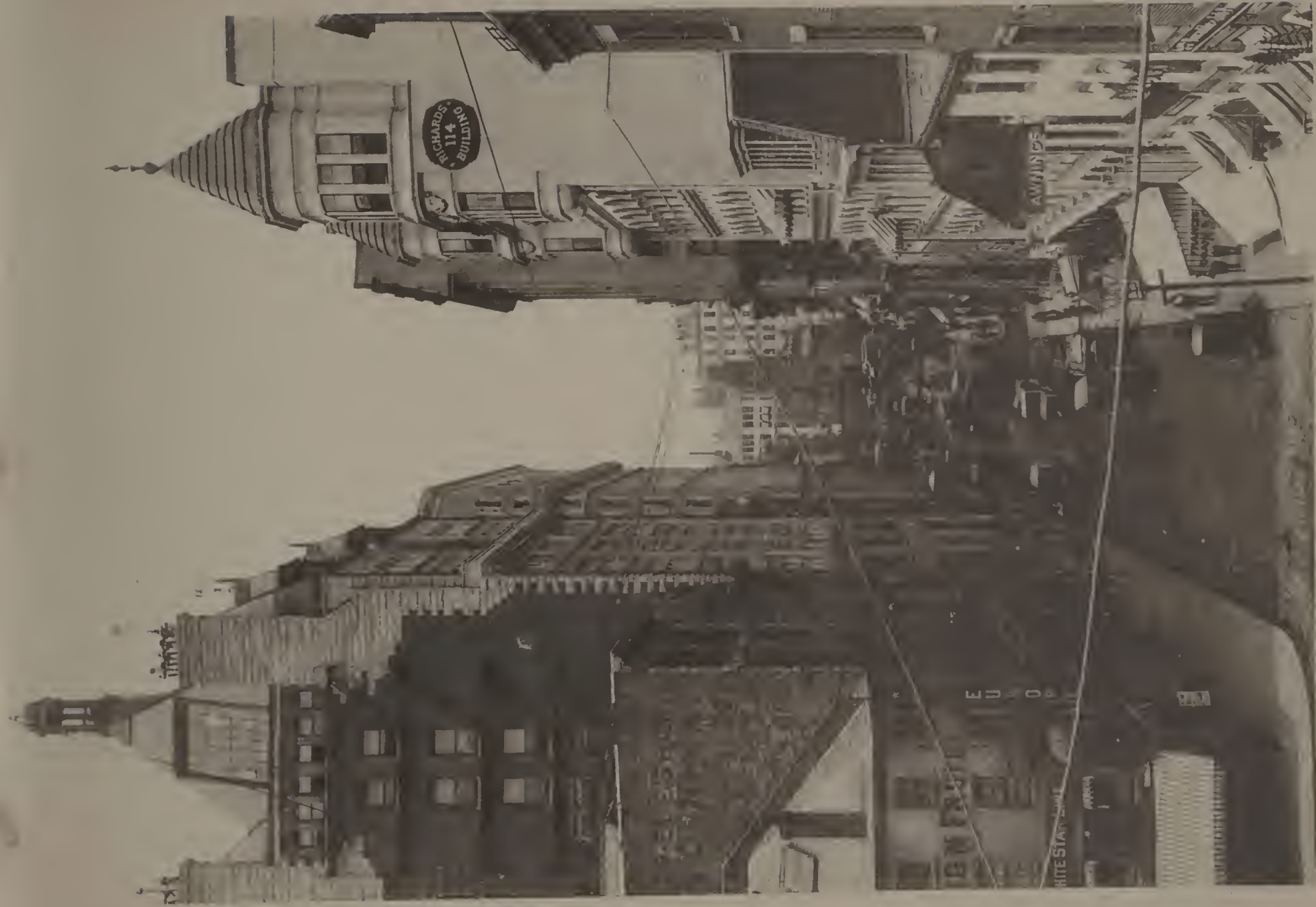


COLONEL CASS STATUE.

PUBLIC GARDENS.







STATE STREET.





MASONIC TEMPLE.



CUSTOM HOUSE.



QUINCY MARKET.







PARK CHURCH.

GRANARY BURIAL GROUNDS.

TREMONT STREET.

TREMONT HOUSE.







FRANKLIN STATUE.      ARMY AND NAVY MONUMENT.      CITY HALL.  
INTERIOR OF OLD SOUTH CHURCH.      FROG POND—BOSTON COMMON.





PARKER HOUSE, KING'S CHAPEL AND FRANKLIN STATUE—SCHOOL STREET.







FANEUIL HALL AND QUINCY MARKET.





CHARLES STREET MALL.

BREWER FOUNTAIN.  
BOSTON COMMON.

PARK STREET.







LONGFELLOW'S RESIDENCE, CAMBRIDGE.







DEVONSHIRE STREET.

WASHINGTON STREET.

CORNHILL STREET.

DOCK SQUARE AND SAMUEL ADAMS STATUE.

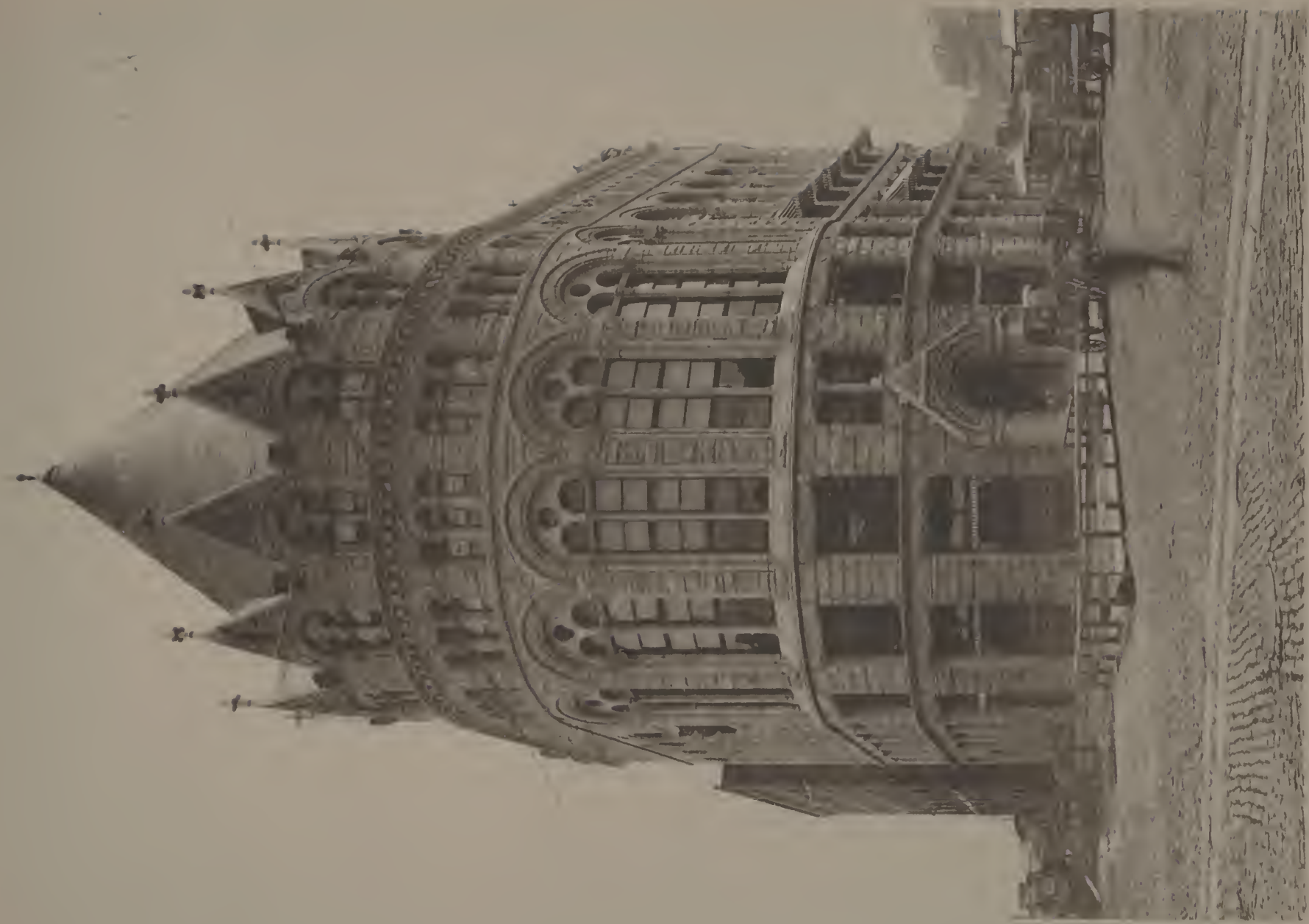




POST OFFICE AND SUB-TREASURY.







BOARD OF TRADE.





PROVIDENCE DEPOT AND EMANCIPATION STATUE







SOLDIERS' AND SAILORS' MONUMENT--CHARLESTOWN.

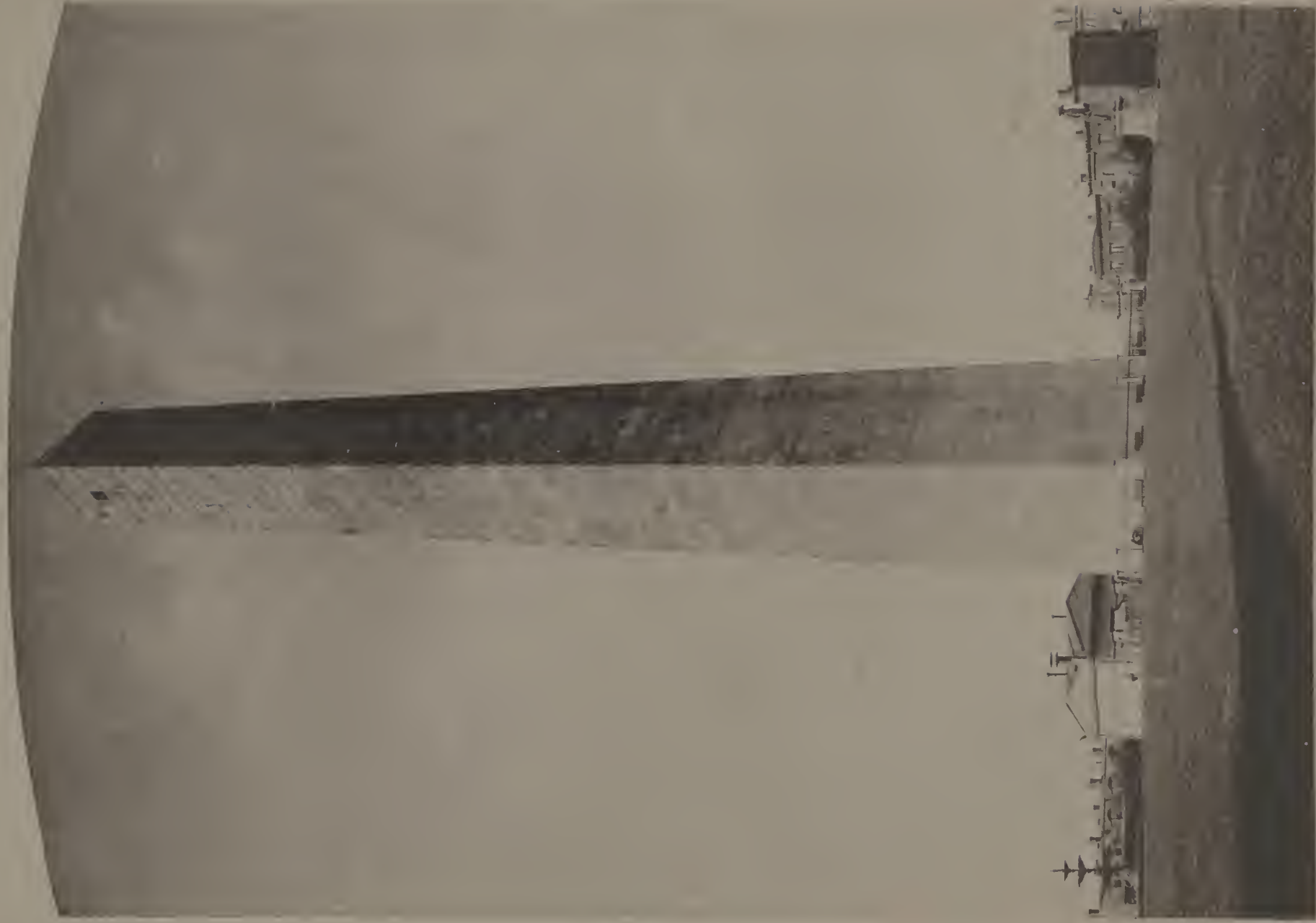






STATUE OF COLONEL W. M. PRESCOTT, BUNKER HILL.

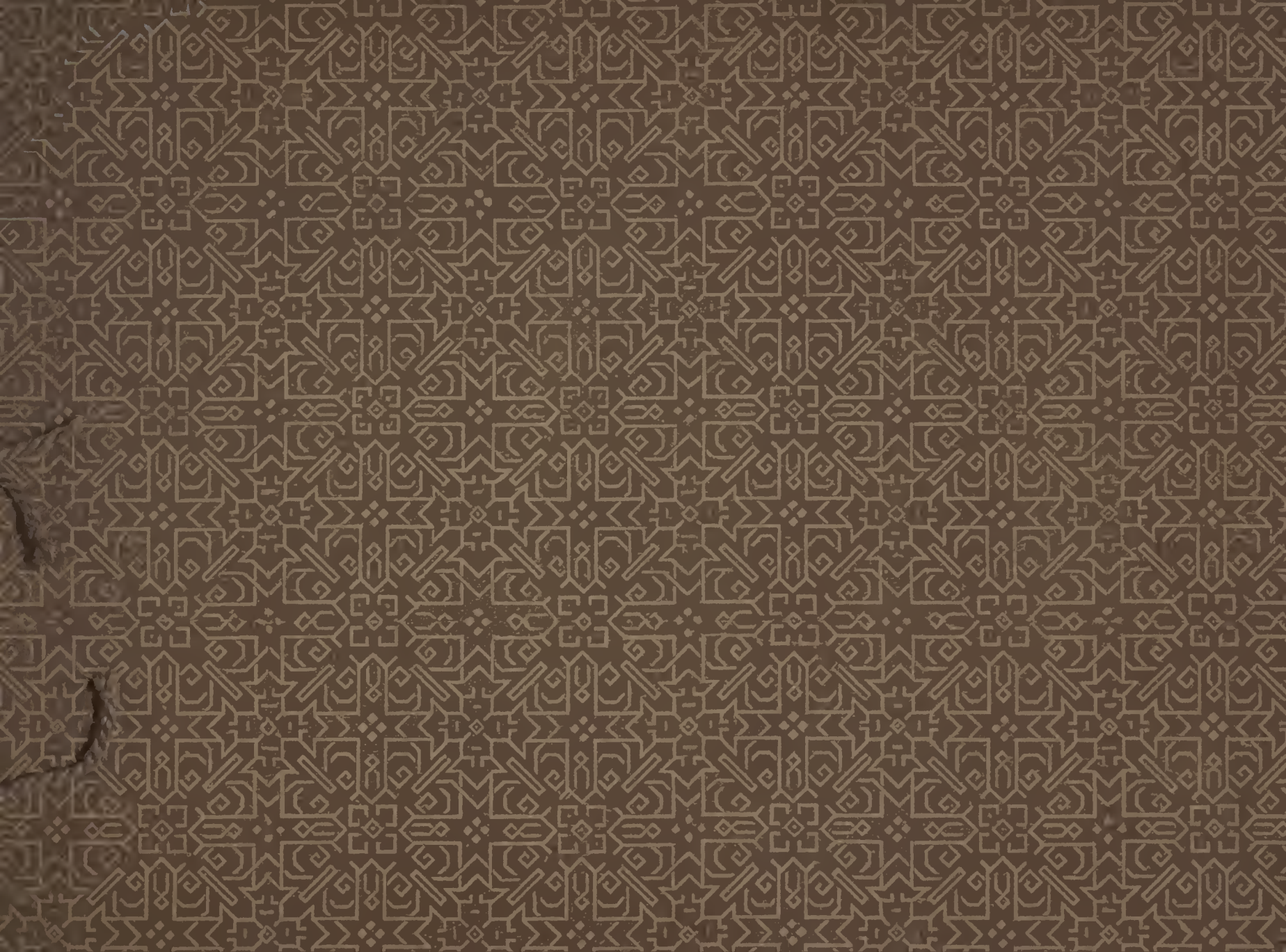




BUNKER HILL MONUMENT.







LIBRARY OF CONGRESS



0 012 919 759 6

