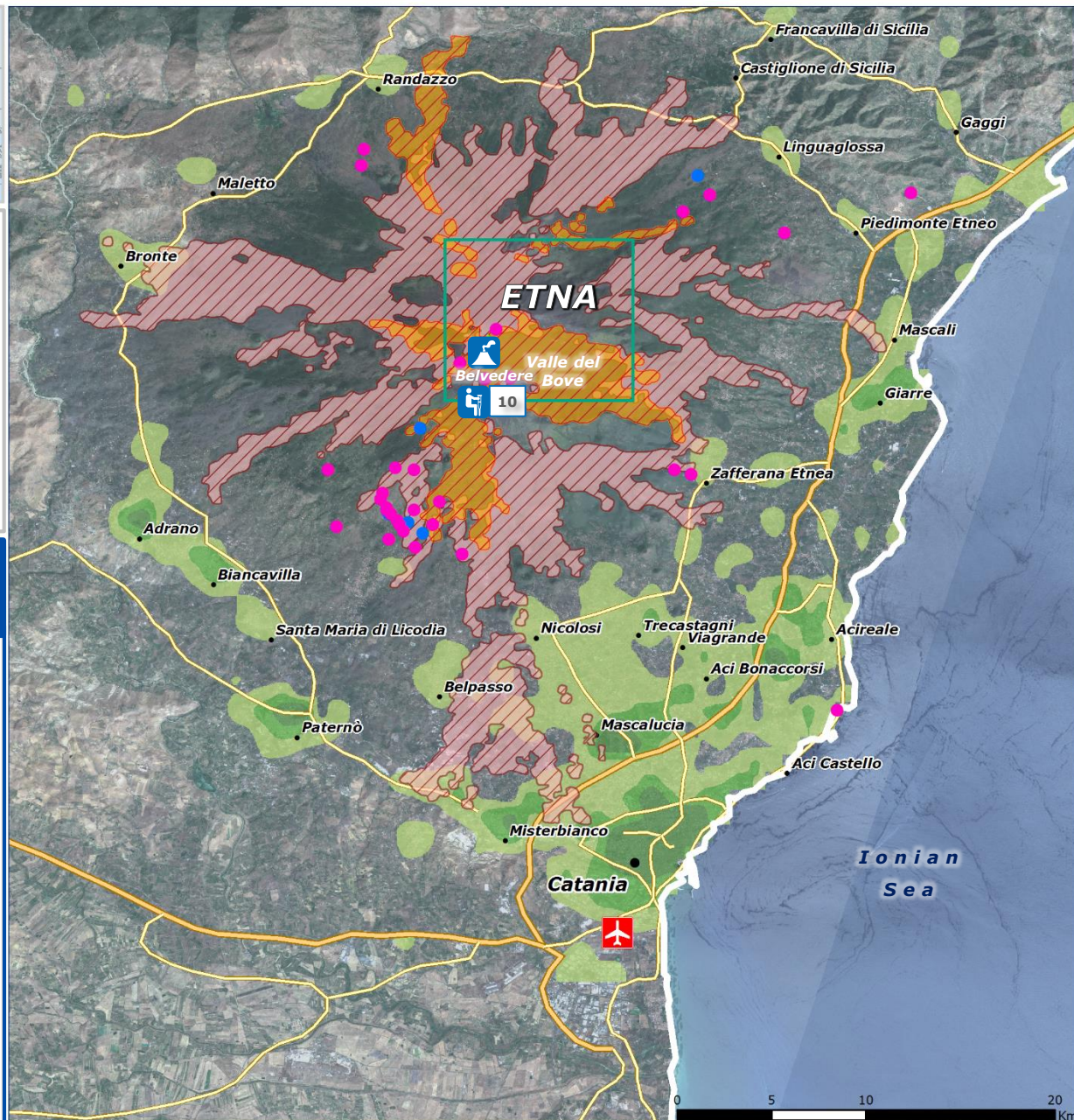
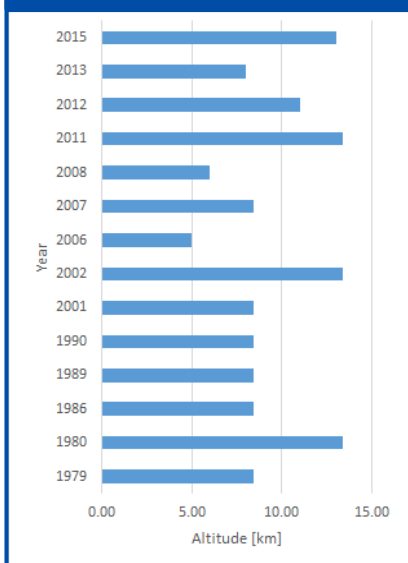


Max. altitude of SO₂ emissions between 1980-2015
(Source: Smithsonian Institution – Global Volcanism Program)



SITUATION

- Mount Etna (Sicily, Italy) started a moderate explosive activity in the New South-Eastern Crater located at 2 700 m above sea level on 15 March, suddenly increasing on 16 March.
- On 17 March, local media reported that 10 people were injured, of which eight tourists, one volcanologist and a TV crew member (BBC), in Belvedere area. Ash fallout has also been reported in S. Maria di Licodia and Adrano municipalities on 16 March.

Sources: INGV, Local Media

